

Released November 4, 2004, by the National Agricultural Statistics Service (NASS), Agricultural Statistics Board, U.S. Department of Agriculture. For information on *Dairy Products* call Kevin Pautler at (202) 720-9168, office hours 7:30 a.m. to 4:00 p.m. ET.

September 2004 Highlights

Total cheese output (excluding cottage cheese) was 718 million pounds, 1.3 percent above September 2003 and 0.5 percent above August 2004.

American type cheese production totaled 294 million pounds, 0.5 percent above September 2003 but 1.6 percent below August 2004.

Butter production was 92.2 million pounds in September, 25.8 percent above September 2003 and 4.0 percent above August 2004.

Frozen dessert: (comparisons with September 2003)

Ice cream, Regular (hard) --- 70.7 million gallons, down 3.7 percent.

Ice cream, Lowfat (total) --- 35.2 million gallons, up 24.2 percent.

Ice cream, Nonfat (hard) --- 1.50 million gallons, down 3.8 percent.

Sherbet (hard) --- 4.24 million gallons, down 0.5 percent.

Frozen Yogurt (total) --- 5.42 million gallons, down 6.9 percent.

Nonfat dry milk for human food: (compared with September 2003) --- 94.6 million pounds, down 2.3 percent.

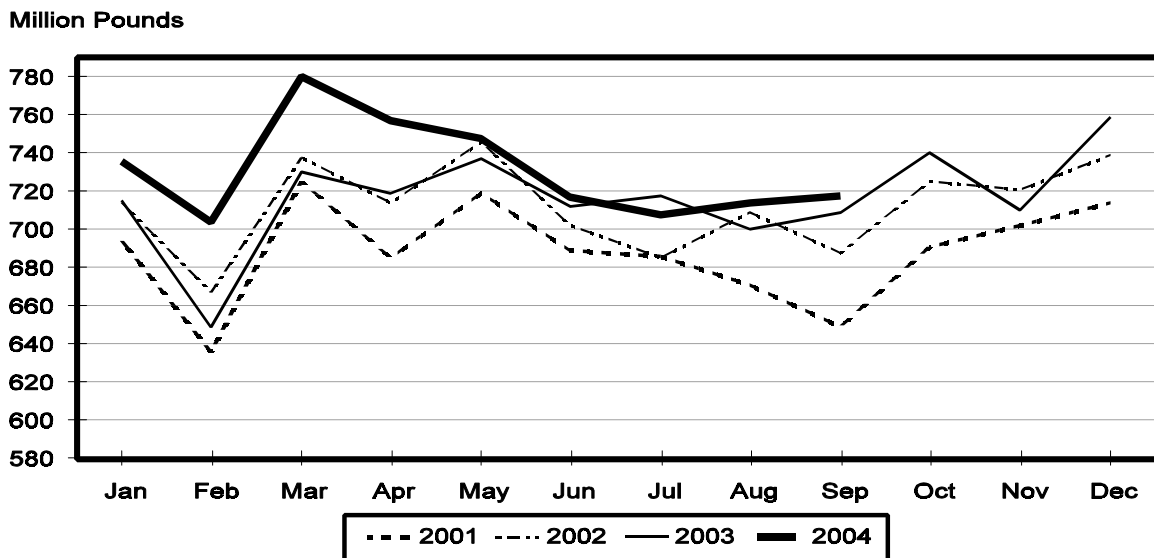
Dry whey products: (comparisons with September 2003)

Dry whey, human --- 73.7 million pounds, down 5.3 percent.

Dry whey, animal --- 6.25 million pounds, down 10.2 percent.

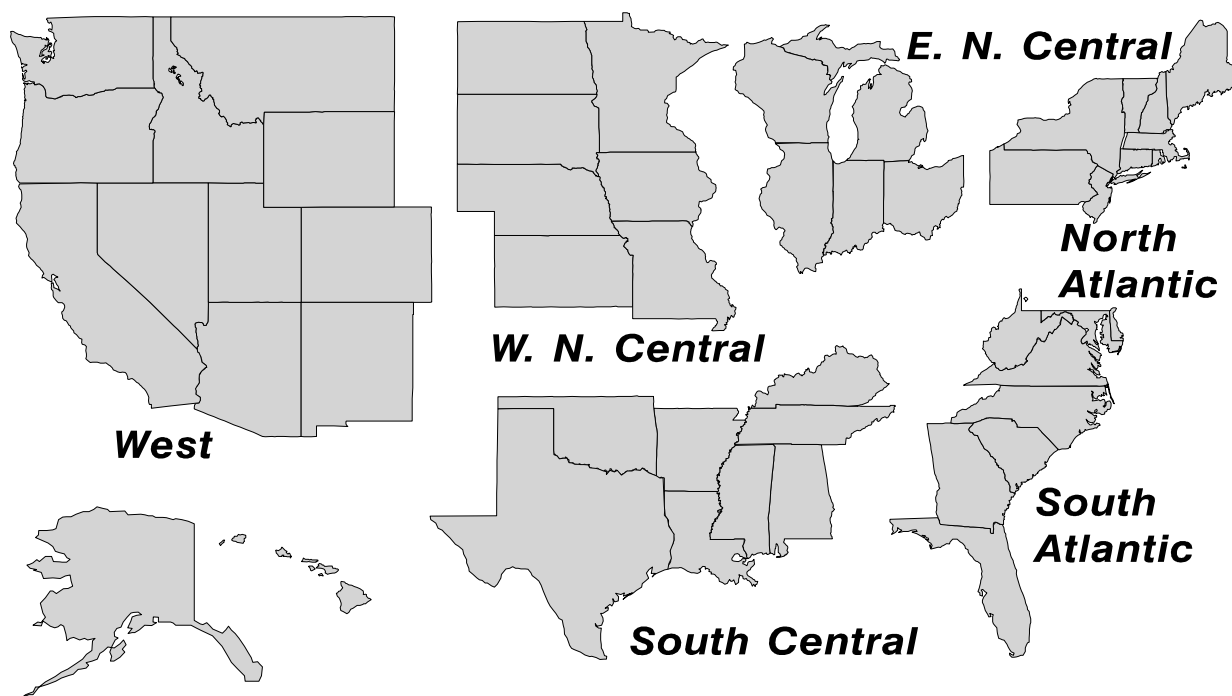
Dry whey, total --- 80.0 million pounds, down 5.7 percent.

Total Cheese Production United States



U. S. Geographic Regions Dairy Products

State totals are not published when fewer than 3 firms have reported or one firm comprises more than 60 percent of the State total. If we are not able to publish a region for confidentiality reasons, it will be combined with other regions when possible. For example, if North Atlantic can not be published, then it will be combined with South Atlantic to publish Atlantic. The West North Central and East North Central will be combined, if necessary, to form North Central. In the event that neither could be published, they may be combined with South Central to publish Central. Some tables will have only limited regions shown, therefore the regions may not add to the United States total.



Contents

Page

Dairy Products: Production by Product, United States, September, 2003-2004	1
Whey and Modified Whey Products: Production, Stocks, and Prices, United States, September, 2003-2004	2
Dairy Products: Production by Product and Month, United States, 2003-2004	3
Select Commodities by State and United States, September, 2003-2004	9
Canned Milk and Dry Milk Products: Manufacturer's Shipments, Stocks, and Selling Prices, September, 2003-2004	13
Procedures and Reliability	14

**Dairy Products: Production by Product,
United States, September, 2003-2004**

Product	Sep 2003	Aug 2004 ¹	Sep 2004	Change From	
				Sep 2003	Aug 2004
	<i>1,000 Pounds</i>	<i>1,000 Pounds</i>	<i>1,000 Pounds</i>	<i>Percent</i>	<i>Percent</i>
Butter	73,267	88,618	92,200	25.8	4.0
Cheese					
American Types ²	292,222	298,615	293,729	0.5	-1.6
Cheddar	214,603	214,339	212,230	-1.1	-1.0
Swiss	21,085	22,970	22,233	5.4	-3.2
Brick and Muenster	7,580	6,845	6,525	-13.9	-4.7
Cream and Neufchatel	66,729	58,091	72,516	8.7	24.8
Hispanic	11,615	10,770	11,894	2.4	10.4
Mozzarella	225,454	230,943	226,258	0.4	-2.0
Other Italian Types	62,458	64,080	63,736	2.0	-0.5
Total Italian Types	287,912	295,023	289,994	0.7	-1.7
All Other Types	21,565	21,687	20,922	-3.0	-3.5
Total	708,708	714,001	717,813	1.3	0.5
Cottage Cheese, Curd ³	38,777	38,133	37,548	-3.2	-1.5
Cottage Cheese, Cream ⁴	33,043	33,308	32,340	-2.1	-2.9
Cottage Cheese, Lowfat ⁵	33,974	33,948	32,912	-3.1	-3.1
Canned Evaporated and Condensed Whole Milk	40,099	37,778	43,678	8.9	15.6
Dry Whole Milk	5,237	3,111	3,188	-39.1	2.5
Nonfat Dry Milk, Human	96,774	113,754	94,557	-2.3	-16.9
Dry Skim Milk, Animal	450	512	337	-25.1	-34.2
Dry Buttermilk	2,409	3,277	3,544	47.1	8.1
Sour Cream	77,522	82,175	77,473	-0.1	-5.7
Yogurt, Plain & Flavored	222,693	227,608	236,892	6.4	4.1
	<i>1,000 Gallons</i>	<i>1,000 Gallons</i>	<i>1,000 Gallons</i>	<i>Percent</i>	<i>Percent</i>
Frozen Products					
Ice Cream, Hard	73,398	73,422	70,680	-3.7	-3.7
Ice Cream, Lowfat, Hard	8,283	9,638	9,287	12.1	-3.6
Ice Cream, Lowfat, Soft	20,081	29,145	25,929	29.1	-11.0
Ice Cream, Lowfat, Total	28,364	38,783	35,216	24.2	-9.2
Ice Cream, Nonfat, Hard	1,564	1,645	1,504	-3.8	-8.6
Sherbet, Hard	4,255	4,632	4,235	-0.5	-8.6
Water and Juice Ices	4,264	5,636	4,148	-2.7	-26.4
Frozen Yogurt, Total	5,818	6,023	5,418	-6.9	-10.0
Regular & Lowfat, Hard	1,882	1,792	1,705	-9.4	-4.9
Nonfat, Hard	1,143	1,006	1,014	-11.3	0.8
Other Frozen Dairy Products	627	964	771	23.0	-20.0
Mix for Frozen Products					
Ice Cream Mix	44,061	42,118	39,647	-10.0	-5.9
Ice Cream, Lowfat, Mix	16,849	21,539	19,537	16.0	-9.3
Ice Cream, Nonfat, Mix	1,012	1,050	993	-1.9	-5.4
Sherbet Mix	3,035	3,296	3,004	-1.0	-8.9
Yogurt Mix	3,487	3,543	3,187	-8.6	-10.0

¹ Revised.

² Includes Cheddar, Colby, Monterey, and Jack.

³ Mostly used for processing into cream or lowfat cottage cheese.

⁴ Fat content 4 percent or more.

⁵ Fat content less than 4 percent.

**Whey and Modified Whey Products: Production, Stocks,
and Prices, United States, September, 2003-2004**

Product	Sep 2003	Aug 2004 ¹	Sep 2004	Change From	
				Sep 2003	Aug 2004
Production					
	<i>1,000 Pounds</i>	<i>1,000 Pounds</i>	<i>1,000 Pounds</i>	<i>Percent</i>	<i>Percent</i>
Condensed Whey, Solids Content ²					
Sweet-Type, Human	8,551	7,007	7,866	-8.0	12.3
Dry Whey Products					
Dry Whey, Human	77,852	80,338	73,747	-5.3	-8.2
Dry Whey, Animal	6,960	6,581	6,250	-10.2	-5.0
Dry Whey, Total	84,812	86,919	79,997	-5.7	-8.0
Reduced Lactose and Minerals					
Human Food	3,823	3,424	3,276	-14.3	-4.3
Animal Feed	3,059	3,744	3,498	14.4	-6.6
Lactose, Human and Animal	48,571	54,500	54,059	11.3	-0.8
Whey					
Protein Concentrate, Human ³	23,339	23,913	24,017	2.9	0.4
Protein Concentrate, Animal ³	3,326	3,995	3,613	8.6	-9.6
Manufacturers' Stocks End-of-Month ⁴					
	<i>1,000 Pounds</i>	<i>1,000 Pounds</i>	<i>1,000 Pounds</i>	<i>Percent</i>	<i>Percent</i>
Dry Whey Products					
Dry Whey, Human	37,340	38,328	30,501	-18.3	-20.4
Dry Whey, Animal	3,501	5,347	5,025	43.5	-6.0
Reduced Lactose and Minerals					
Human and Animal ⁵	9,518	6,749	6,623	-30.4	-1.9
Lactose, Human and Animal	40,841	66,966	64,390	57.7	-3.8
Whey Protein Concentrate, Human ³	23,555	21,427	21,691	-7.9	1.2
Whey Protein Concentrate, Animal ³	1,657	2,315	2,531	52.7	9.3
Manufacturers' Selling Price ⁶					
	<i>Cents per Pound</i>	<i>Cents per Pound</i>	<i>Cents per Pound</i>	<i>Cents Change</i>	<i>Cents Change</i>
Dry Whey, Animal	16.6	20.7	20.3	3.7	-0.4

¹ Revised.

² Final marketable product only. Does not include quantity used or shipped to another plant for further processing into dry whey or modified whey products. Does not include sweet-type, animal whey.

³ Whey Protein Concentrate, 25.0 to 89.9 percent.

⁴ Stocks held by manufacturers at all points and in transit.

⁵ Reduced lactose and minerals stocks combined to avoid disclosure of individual operations.

⁶ Prices for bulk goods, f.o.b. plant. Average monthly prices reported by firms.

**Dairy Products: Production by Product and Month,
United States, 2003-2004 ¹**

Product and Month	By Month			Cumulative		
	2003	2004	Change From 2003	2003	2004	Change From 2003
	<i>1,000 Pounds</i>	<i>1,000 Pounds</i>	<i>Percent</i>	<i>1,000 Pounds</i>	<i>1,000 Pounds</i>	<i>Percent</i>
Total Cheese						
Jan	714,838	735,851	2.9	714,838	735,851	2.9
Feb	648,644	704,288	8.6	1,363,482	1,440,139	5.6
Mar	730,287	779,599	6.8	2,093,769	2,219,738	6.0
Apr	718,834	756,778	5.3	2,812,603	2,976,516	5.8
May	737,027	748,351	1.5	3,549,630	3,724,867	4.9
Jun	712,309	717,286	0.7	4,261,939	4,442,153	4.2
Jul	718,258	707,884	-1.4	4,980,197	5,150,037	3.4
Aug	700,132	714,001	2.0	5,680,329	5,864,038	3.2
Sep	708,708	717,813	1.3	6,389,037	6,581,851	3.0
Oct	740,016			7,129,053		
Nov	710,036			7,839,089		
Dec	758,887			8,597,976		
American Cheese						
Jan	318,428	321,380	0.9	318,428	321,380	0.9
Feb	286,295	297,241	3.8	604,723	618,621	2.3
Mar	317,833	324,194	2.0	922,556	942,815	2.2
Apr	307,087	322,411	5.0	1,229,643	1,265,226	2.9
May	319,462	331,908	3.9	1,549,105	1,597,134	3.1
Jun	305,049	311,376	2.1	1,854,154	1,908,510	2.9
Jul	306,675	302,784	-1.3	2,160,829	2,211,294	2.3
Aug	299,117	298,615	-0.2	2,459,946	2,509,909	2.0
Sep	292,222	293,729	0.5	2,752,168	2,803,638	1.9
Oct	305,067			3,057,235		
Nov	291,085			3,348,320		
Dec	321,189			3,669,509		
Cheddar Cheese						
Jan	246,690	244,808	-0.8	246,690	244,808	-0.8
Feb	219,377	223,308	1.8	466,067	468,116	0.4
Mar	240,590	241,804	0.5	706,657	709,920	0.5
Apr	231,685	243,367	5.0	938,342	953,287	1.6
May	239,124	251,316	5.1	1,177,466	1,204,603	2.3
Jun	229,741	234,465	2.1	1,407,207	1,439,068	2.3
Jul	229,870	218,284	-5.0	1,637,077	1,657,352	1.2
Aug	223,183	214,339	-4.0	1,860,260	1,871,691	0.6
Sep	214,603	212,230	-1.1	2,074,863	2,083,921	0.4
Oct	220,878			2,295,741		
Nov	212,629			2,508,370		
Dec	240,972			2,749,342		

See footnote(s) at end of table.

--continued

**Dairy Products: Production by Product and Month,
United States, 2003-2004¹ (continued)**

Product and Month	By Month			Cumulative		
	2003	2004	Change From 2003	2003	2004	Change From 2003
	<i>1,000 Pounds</i>	<i>1,000 Pounds</i>	<i>Percent</i>	<i>1,000 Pounds</i>	<i>1,000 Pounds</i>	<i>Percent</i>
Italian Cheese						
Jan	292,100	307,046	5.1	292,100	307,046	5.1
Feb	265,492	299,501	12.8	557,592	606,547	8.8
Mar	299,783	333,416	11.2	857,375	939,963	9.6
Apr	297,684	309,418	3.9	1,155,059	1,249,381	8.2
May	302,565	302,462		1,457,624	1,551,843	6.5
Jun	293,040	291,669	-0.5	1,750,664	1,843,512	5.3
Jul	293,823	288,533	-1.8	2,044,487	2,132,045	4.3
Aug	288,787	295,023	2.2	2,333,274	2,427,068	4.0
Sep	287,912	289,994	0.7	2,621,186	2,717,062	3.7
Oct	297,437			2,918,623		
Nov	289,184			3,207,807		
Dec	314,242			3,522,049		
Mozzarella						
Jan	231,028	244,677	5.9	231,028	244,677	5.9
Feb	211,519	240,013	13.5	442,547	484,690	9.5
Mar	237,475	262,896	10.7	680,022	747,586	9.9
Apr	236,320	249,677	5.7	916,342	997,263	8.8
May	246,188	244,528	-0.7	1,162,530	1,241,791	6.8
Jun	236,757	234,903	-0.8	1,399,287	1,476,694	5.5
Jul	236,511	227,758	-3.7	1,635,798	1,704,452	4.2
Aug	232,518	230,943	-0.7	1,868,316	1,935,395	3.6
Sep	225,454	226,258	0.4	2,093,770	2,161,653	3.2
Oct	232,061			2,325,831		
Nov	230,315			2,556,146		
Dec	249,953			2,806,099		
Other Italian						
Jan	61,072	62,369	2.1	61,072	62,369	2.1
Feb	53,973	59,488	10.2	115,045	121,857	5.9
Mar	62,308	70,520	13.2	177,353	192,377	8.5
Apr	61,364	59,741	-2.6	238,717	252,118	5.6
May	56,377	57,934	2.8	295,094	310,052	5.1
Jun	56,283	56,766	0.9	351,377	366,818	4.4
Jul	57,312	60,775	6.0	408,689	427,593	4.6
Aug	56,269	64,080	13.9	464,958	491,673	5.7
Sep	62,458	63,736	2.0	527,416	555,409	5.3
Oct	65,376			592,792		
Nov	58,869			651,661		
Dec	64,289			715,950		

See footnote(s) at end of table.

--continued

**Dairy Products: Production by Product and Month,
United States, 2003-2004¹ (continued)**

Product and Month	By Month			Cumulative		
	2003	2004	Change From 2003	2003	2004	Change From 2003
	<i>1,000 Pounds</i>	<i>1,000 Pounds</i>	<i>Percent</i>	<i>1,000 Pounds</i>	<i>1,000 Pounds</i>	<i>Percent</i>
Butter						
Jan	141,912	131,859	-7.1	141,912	131,859	-7.1
Feb	128,086	105,788	-17.4	269,998	237,647	-12.0
Mar	126,400	96,741	-23.5	396,398	334,388	-15.6
Apr	122,844	96,521	-21.4	519,242	430,909	-17.0
May	114,895	106,597	-7.2	634,137	537,506	-15.2
Jun	84,169	96,975	15.2	718,306	634,481	-11.7
Jul	80,050	91,229	14.0	798,356	725,710	-9.1
Aug	70,916	88,618	25.0	869,272	814,328	-6.3
Sep	73,267	92,200	25.8	942,539	906,528	-3.8
Oct	96,784			1,039,323		
Nov	88,436			1,127,759		
Dec	114,599			1,242,358		
Nonfat Dry Milk, Human						
Jan	141,299	120,490	-14.7	141,299	120,490	-14.7
Feb	137,213	115,772	-15.6	278,512	236,262	-15.2
Mar	155,430	118,018	-24.1	433,942	354,280	-18.4
Apr	159,997	134,057	-16.2	593,939	488,337	-17.8
May	163,883	151,108	-7.8	757,822	639,445	-15.6
Jun	139,992	143,830	2.7	897,814	783,275	-12.8
Jul	127,915	134,036	4.8	1,025,729	917,311	-10.6
Aug	107,060	113,754	6.3	1,132,789	1,031,065	-9.0
Sep	96,774	94,557	-2.3	1,229,563	1,125,622	-8.5
Oct	106,887			1,336,450		
Nov	110,865			1,447,315		
Dec	141,726			1,589,041		
Total Dry Whey ²						
Jan	95,268	87,073	-8.6	95,268	87,073	-8.6
Feb	86,466	83,904	-3.0	181,734	170,977	-5.9
Mar	98,511	93,745	-4.8	280,245	264,722	-5.5
Apr	92,801	91,978	-0.9	373,046	356,700	-4.4
May	97,256	90,491	-7.0	470,302	447,191	-4.9
Jun	92,410	86,879	-6.0	562,712	534,070	-5.1
Jul	93,709	83,851	-10.5	656,421	617,921	-5.9
Aug	87,643	86,919	-0.8	744,064	704,840	-5.3
Sep	84,812	79,997	-5.7	828,876	784,837	-5.3
Oct	86,176			915,052		
Nov	82,343			997,395		
Dec	88,948			1,086,343		

See footnote(s) at end of table.

--continued

**Dairy Products: Production by Product and Month,
United States, 2003-2004¹ (continued)**

Product and Month	By Month			Cumulative		
	2003	2004	Change From 2003	2003	2004	Change From 2003
	<i>1,000 Pounds</i>	<i>1,000 Pounds</i>	<i>Percent</i>	<i>1,000 Pounds</i>	<i>1,000 Pounds</i>	<i>Percent</i>
Cream Cottage Cheese						
Jan	32,071	31,897	-0.5	32,071	31,897	-0.5
Feb	29,246	30,642	4.8	61,317	62,539	2.0
Mar	31,570	34,940	10.7	92,887	97,479	4.9
Apr	33,847	31,360	-7.3	126,734	128,839	1.7
May	32,722	30,688	-6.2	159,456	159,527	
Jun	33,694	31,682	-6.0	193,150	191,209	-1.0
Jul	34,767	32,708	-5.9	227,917	223,917	-1.8
Aug	34,175	33,308	-2.5	262,092	257,225	-1.9
Sep	33,043	32,340	-2.1	295,135	289,565	-1.9
Oct	32,276			327,411		
Nov	28,723			356,134		
Dec	29,042			385,176		
Lowfat Cottage Cheese						
Jan	31,263	31,839	1.8	31,263	31,839	1.8
Feb	29,543	30,591	3.5	60,806	62,430	2.7
Mar	32,003	35,649	11.4	92,809	98,079	5.7
Apr	32,910	32,172	-2.2	125,719	130,251	3.6
May	32,039	34,300	7.1	157,758	164,551	4.3
Jun	30,301	34,139	12.7	188,059	198,690	5.7
Jul	32,910	32,558	-1.1	220,969	231,248	4.7
Aug	33,182	33,948	2.3	254,151	265,196	4.3
Sep	33,974	32,912	-3.1	288,125	298,108	3.5
Oct	33,398			321,523		
Nov	29,728			351,251		
Dec	28,782			380,033		
	<i>1,000 Gallons</i>	<i>1,000 Gallons</i>	<i>Percent</i>	<i>1,000 Gallons</i>	<i>1,000 Gallons</i>	<i>Percent</i>
Ice Cream, Hard						
Jan	69,795	59,132	-15.3	69,795	59,132	-15.3
Feb	70,821	65,823	-7.1	140,616	124,955	-11.1
Mar	75,716	78,711	4.0	216,332	203,666	-5.9
Apr	84,367	77,391	-8.3	300,699	281,057	-6.5
May	80,900	75,073	-7.2	381,599	356,130	-6.7
Jun	84,698	85,760	1.3	466,297	441,890	-5.2
Jul	84,507	78,759	-6.8	550,804	520,649	-5.5
Aug	77,382	73,422	-5.1	628,186	594,071	-5.4
Sep	73,398	70,680	-3.7	701,584	664,751	-5.2
Oct	69,761			771,345		
Nov	59,530			830,875		
Dec	56,091			886,966		

See footnote(s) at end of table.

--continued

**Dairy Products: Production by Product and Month,
United States, 2003-2004¹ (continued)**

Product and Month	By Month			Cumulative		
	2003	2004	Change From 2003	2003	2004	Change From 2003
	<i>1,000 Gallons</i>	<i>1,000 Gallons</i>	<i>Percent</i>	<i>1,000 Gallons</i>	<i>1,000 Gallons</i>	<i>Percent</i>
Ice Cream, Lowfat						
Jan	23,544	25,947	10.2	23,544	25,947	10.2
Feb	24,272	26,832	10.5	47,816	52,779	10.4
Mar	29,618	36,689	23.9	77,434	89,468	15.5
Apr	32,249	38,960	20.8	109,683	128,428	17.1
May	34,534	38,859	12.5	144,217	167,287	16.0
Jun	36,902	43,613	18.2	181,119	210,900	16.4
Jul	38,783	42,117	8.6	219,902	253,017	15.1
Aug	33,504	38,783	15.8	253,406	291,800	15.2
Sep	28,364	35,216	24.2	281,770	327,016	16.1
Oct	27,413			309,183		
Nov	21,285			330,468		
Dec	22,466			352,934		
Ice Cream, NF, Hard						
Jan	1,440	1,430	-0.7	1,440	1,430	-0.7
Feb	1,382	1,482	7.2	2,822	2,912	3.2
Mar	1,593	1,693	6.3	4,415	4,605	4.3
Apr	1,830	1,972	7.8	6,245	6,577	5.3
May	1,839	1,795	-2.4	8,084	8,372	3.6
Jun	1,865	1,928	3.4	9,949	10,300	3.5
Jul	1,858	1,792	-3.6	11,807	12,092	2.4
Aug	1,478	1,645	11.3	13,285	13,737	3.4
Sep	1,564	1,504	-3.8	14,849	15,241	2.6
Oct	1,681			16,530		
Nov	1,344			17,874		
Dec	1,097			18,971		
Sherbet, Hard						
Jan	3,986	3,766	-5.5	3,986	3,766	-5.5
Feb	4,311	3,973	-7.8	8,297	7,739	-6.7
Mar	4,683	5,609	19.8	12,980	13,348	2.8
Apr	5,011	5,171	3.2	17,991	18,519	2.9
May	5,058	4,944	-2.3	23,049	23,463	1.8
Jun	5,582	5,805	4.0	28,631	29,268	2.2
Jul	5,053	4,693	-7.1	33,684	33,961	0.8
Aug	4,552	4,632	1.8	38,236	38,593	0.9
Sep	4,255	4,235	-0.5	42,491	42,828	0.8
Oct	3,697			46,188		
Nov	3,169			49,357		
Dec	3,209			52,566		

See footnote(s) at end of table.

--continued

**Dairy Products: Production by Product and Month,
United States, 2003-2004¹ (continued)**

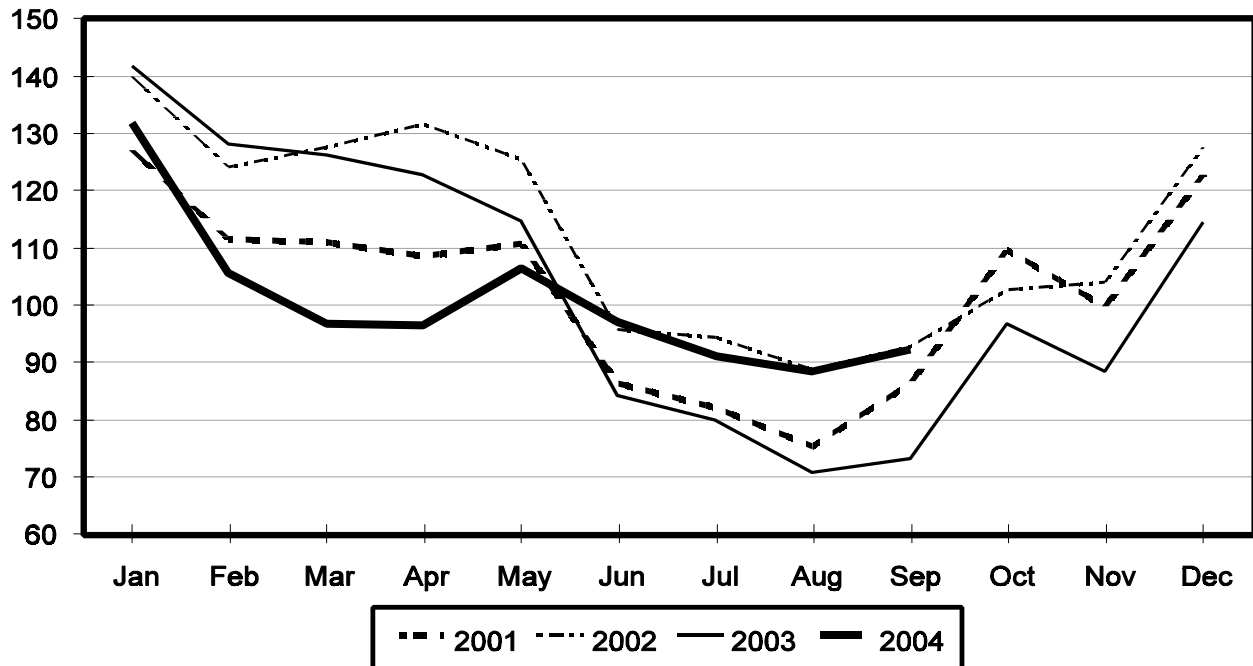
Product and Month	By Month			Cumulative		
	2003	2004	Change From 2003	2003	2004	Change From 2003
	<i>1,000 Gallons</i>	<i>1,000 Gallons</i>	<i>Percent</i>	<i>1,000 Gallons</i>	<i>1,000 Gallons</i>	<i>Percent</i>
Frozen Yogurt						
Jan	5,271	4,403	-16.5	5,271	4,403	-16.5
Feb	5,731	4,973	-13.2	11,002	9,376	-14.8
Mar	5,803	6,246	7.6	16,805	15,622	-7.0
Apr	7,025	6,016	-14.4	23,830	21,638	-9.2
May	6,558	6,282	-4.2	30,388	27,920	-8.1
Jun	6,211	6,419	3.3	36,599	34,339	-6.2
Jul	6,057	5,811	-4.1	42,656	40,150	-5.9
Aug	5,953	6,023	1.2	48,609	46,173	-5.0
Sep	5,818	5,418	-6.9	54,427	51,591	-5.2
Oct	5,282			59,709		
Nov	4,399			64,108		
Dec	3,916			68,024		

¹ August 2004 data revised.

² Excludes all modified dry whey products.

Total Butter Production United States

Million Pounds



**Total Cheese, Excluding Cottage Cheese: Production by
State and United States, September 2003-2004**

State	Sep 2003	Aug ¹ 2004	Sep 2004	Change From	
				Sep 2003	Aug 2004
	<i>1,000 Pounds</i>	<i>1,000 Pounds</i>	<i>1,000 Pounds</i>	<i>Percent</i>	<i>Percent</i>
CA	151,800	156,351	160,517	5.7	2.7
IL	7,925	7,131	7,215	-9.0	1.2
IA	12,177	11,731	12,515	2.8	6.7
MA	70	64	74	5.7	15.6
MN	47,114	48,452	46,957	-0.3	-3.1
MO	9,508	9,271	10,353	8.9	11.7
NY	62,388	57,929	55,934	-10.3	-3.4
OH	12,782	14,927	15,140	18.4	1.4
PA	28,434	30,556	29,970	5.4	-1.9
SD	11,595	12,377	12,269	5.8	-0.9
UT	6,262	4,956	5,036	-19.6	1.6
WI	191,880	195,130	194,307	1.3	-0.4
Oth Sts ²	166,773	165,126	167,526	0.5	1.5
US	708,708	714,001	717,813	1.3	0.5
N Atlantic	106,291	104,620	101,510	-4.5	-3.0
S Atlantic	3,332	3,315	3,302	-0.9	-0.4
E N Central	222,626	227,290	226,308	1.7	-0.4
W N Central	82,366	84,817	84,945	3.1	0.2
S Central	6,963	6,310	7,618	9.4	20.7
West	287,130	287,649	294,130	2.4	2.3

¹ Revised.

² States not shown when fewer than 3 plants reported or individual plant operations could be disclosed. Percent change shown only when comparable States are included in the calculation.

American Cheese: Production by State and United States, September 2003-2004

State	Sep 2003	Aug ¹ 2004	Sep 2004	Change From	
				Sep 2003	Aug 2004
	<i>1,000 Pounds</i>	<i>1,000 Pounds</i>	<i>1,000 Pounds</i>	<i>Percent</i>	<i>Percent</i>
CA	63,229	65,640	66,172	4.7	0.8
ID	41,154	45,856	45,391	10.3	-1.0
IA	9,833	9,111	9,975	1.4	9.5
MN	44,552	45,891	44,287	-0.6	-3.5
NY	4,551	4,950	4,682	2.9	-5.4
OH	2,337	2,369	2,174	-7.0	-8.2
OR	8,175	8,724	9,329	14.1	6.9
SD	6,454	6,431	6,504	0.8	1.1
WI	66,062	70,678	65,800	-0.4	-6.9
Oth Sts ²	45,875	38,965	39,415	-14.1	1.2
US	292,222	298,615	293,729	0.5	-1.6
Atlantic	9,661	11,179	10,105	4.6	-9.6
E N Central	69,212	74,108	68,925	-0.4	-7.0
W N Central	61,235	61,831	61,142	-0.2	-1.1
S Central	4,158	3,159	4,741	14.0	50.1
West	147,956	148,338	148,816	0.6	0.3

¹ Revised.

² States not shown when fewer than 3 plants reported or individual plant operations could be disclosed. Percent change shown only when comparable States are included in the calculation.

Cheddar Cheese: Production by State and United States, September 2003-2004

State	Sep 2003	Aug ¹ 2004	Sep 2004	Change From	
				Sep 2003	Aug 2004
	<i>1,000 Pounds</i>	<i>1,000 Pounds</i>	<i>1,000 Pounds</i>	<i>Percent</i>	<i>Percent</i>
CA	40,390	40,433	41,814	3.5	3.4
ID	19,957	20,138	19,906	-0.3	-1.2
MN	40,416	41,176	39,522	-2.2	-4.0
NY	4,453	4,840	4,545	2.1	-6.1
SD	3,834	4,679	5,058	31.9	8.1
WI	49,496	53,634	50,200	1.4	-6.4
Oth Sts ²	56,057	49,439	51,185	-8.7	3.5
US	214,603	214,339	212,230	-1.1	-1.0
Atlantic	9,212	10,776	9,287	0.8	-13.8
E N Cen	51,551	55,620	51,986	0.8	-6.5
W N Cen	51,289	52,320	51,955	1.3	-0.7
S Cen	4,157	3,158	4,740	14.0	50.1
West	98,394	92,465	94,262	-4.2	1.9

¹ Revised.

² States not shown when fewer than 3 plants reported or individual plant operations could be disclosed. Percent change shown only when comparable States are included in the calculation.

Mozzarella Cheese: Production by State and United States, September 2003-2004

State	Sep 2003	Aug ¹ 2004	Sep 2004	Change From	
				Sep 2003	Aug 2004
	<i>1,000 Pounds</i>	<i>1,000 Pounds</i>	<i>1,000 Pounds</i>	<i>Percent</i>	<i>Percent</i>
CA	67,118	68,775	71,308	6.2	3.7
NY	15,937	14,169	11,652	-26.9	-17.8
PA	13,244	15,668	13,697	3.4	-12.6
WI	66,786	67,396	66,400	-0.6	-1.5
Oth Sts ²	62,369	64,935	63,201	1.3	-2.7
US	225,454	230,943	226,258	0.4	-2.0
Atlantic ³	36,956	37,987	32,856	-11.1	-13.5
E N Central	76,104	76,795	75,406	-0.9	-1.8
West	105,728	108,920	110,872	4.9	1.8

¹ Revised.

² States not shown when fewer than 3 plants reported or individual plant operations could be disclosed. Percent change shown only when comparable States are included in the calculation.

³ Region totals may not add to U.S. when compiled regions could not be disclosed.

Butter: Production by State and United States, September 2003-2004

State	Sep 2003	Aug ¹ 2004	Sep 2004	Change From	
				Sep 2003	Aug 2004
	<i>1,000 Pounds</i>	<i>1,000 Pounds</i>	<i>1,000 Pounds</i>	<i>Percent</i>	<i>Percent</i>
CA	25,141	31,754	33,999	35.2	7.1
NY	2,263	1,171	1,153	-49.0	-1.5
PA	2,005	2,936	2,237	11.6	-23.8
WI	17,294	26,026	26,600	53.8	2.2
Oth Sts ²	26,564	26,731	28,211	6.2	5.5
US	73,267	88,618	92,200	25.8	4.0
N Atlantic ³	6,734	6,503	6,023	-10.6	-7.4
E N Central	18,887	27,066	27,986	48.2	3.4
W N Central	4,827	6,282	5,515	14.3	-12.2
West	37,797	43,857	45,470	20.3	3.7

¹ Revised.

² States not shown when fewer than 3 plants reported or individual plant operations could be disclosed. Percent change shown only when comparable States are included in the calculation.

³ Region totals may not add to U.S. when compiled regions could not be disclosed.

**Nonfat Dry Milk, Human: Production by State
and United States, September 2003-2004**

State	Sep 2003	Aug ¹ 2004	Sep 2004	Change From	
				Sep 2003	Aug 2004
	<i>1,000 Pounds</i>	<i>1,000 Pounds</i>	<i>1,000 Pounds</i>	<i>Percent</i>	<i>Percent</i>
CA	50,939	64,181	59,929	17.6	-6.6
Oth Sts ²	45,835	49,573	34,628	-24.5	-30.1
US	96,774	113,754	94,557	-2.3	-16.9
Atlantic	2,583	12,737	5,413	109.6	-57.5
E N Central	2,563	3,363	1,195	-53.4	-64.5
W N Central	2,519	5,179	2,392	-5.0	-53.8
S Central	4,038	3,965	3,171	-21.5	-20.0
West	85,071	88,510	82,386	-3.2	-6.9

¹ Revised.

² States not shown when fewer than 3 plants reported or individual plant operations could be disclosed. Percent change shown only when comparable States are included in the calculation.

**Dry Whey, Human: Production by State
and United States, September 2003-2004**

State	Sep 2003	Aug ¹ 2004	Sep 2004	Change From	
				Sep 2003	Aug 2004
	<i>1,000 Pounds</i>	<i>1,000 Pounds</i>	<i>1,000 Pounds</i>	<i>Percent</i>	<i>Percent</i>
CA	10,398	11,527	10,491	0.9	-9.0
MN	8,184	4,222	4,141	-49.4	-1.9
NY	10,112	9,841	8,736	-13.6	-11.2
PA	6,672	7,716	6,509	-2.4	-15.6
UT	1,669	1,898	1,572	-5.8	-17.2
WI	24,366	25,248	24,000	-1.5	-4.9
Oth Sts ²	16,451	19,886	18,298	11.2	-8.0
US	77,852	80,338	73,747	-5.3	-8.2
Atlantic	16,784	17,557	15,245	-9.2	-13.2
Central	38,822	37,592	35,142	-9.5	-6.5
West	22,246	25,189	23,360	5.0	-7.3

¹ Revised.

² States not shown when fewer than 3 plants reported or individual plant operations could be disclosed. Percent change shown only when comparable States are included in the calculation.

Ice Cream, Hard: Production by State and United States, September 2003-2004

State	Sep 2003	Aug ¹ 2004	Sep 2004	Change From	
				Sep 2003	Aug 2004
	<i>1,000 Gallons</i>	<i>1,000 Gallons</i>	<i>1,000 Gallons</i>	<i>Percent</i>	<i>Percent</i>
CA	10,786	10,835	10,919	1.2	0.8
FL	1,955	1,700	1,600	-18.2	-5.9
IL	2,489	3,171	2,895	16.3	-8.7
IN	7,331	6,840	8,205	11.9	20.0
MD	1,599	1,599	1,599		
MA	5,159	3,941	4,383	-15.0	11.2
MI	1,550	1,500	1,400	-9.7	-6.7
MN	3,986	3,405	3,707	-7.0	8.9
MO	1,825	1,847	1,443	-20.9	-21.9
NY	2,612	2,400	2,641	1.1	10.0
NC	1,696	1,145	1,073	-36.7	-6.3
OH	2,412	2,295	2,050	-15.0	-10.7
OR	1,210	1,450	1,124	-7.1	-22.5
PA	3,589	4,463	3,514	-2.1	-21.3
TN	1,594	1,466	1,256	-21.2	-14.3
TX	4,300	3,487	3,564	-17.1	2.2
UT	1,726	2,412	1,822	5.6	-24.5
Oth Sts ²	17,579	19,466	17,485	-0.5	-10.2
US	73,398	73,422	70,680	-3.7	-3.7
N Atlantic	13,605	13,135	12,764	-6.2	-2.8
S Atlantic	6,628	5,585	5,606	-15.4	0.4
E N Central	14,595	14,650	15,248	4.5	4.1
W N Central	11,678	12,297	11,106	-4.9	-9.7
S Central	9,616	9,065	8,524	-11.4	-6.0
West	17,276	18,690	17,432	0.9	-6.7

¹ Revised.

² States not shown when fewer than 3 plants reported or individual plant operations could be disclosed. Percent change shown only when comparable States are included in the calculation.

**Canned Milk and Dry Milk Products: Manufacturers' Shipments,
Stocks, and Selling Prices, September, 2003-2004**

Product	Sep 2003	Aug 2004 ¹	Sep 2004	Change From	
				Sep 2003	Aug 2004
	Manufacturers' Shipments ²				
	<i>1,000 Pounds</i>	<i>1,000 Pounds</i>	<i>1,000 Pounds</i>	<i>Percent</i>	<i>Percent</i>
Nonfat Dry Milk, Human	103,694	107,489	103,912	0.2	-3.3
	Manufacturers' Stocks End-of-Month ³				
	<i>1,000 Pounds</i>	<i>1,000 Pounds</i>	<i>1,000 Pounds</i>	<i>Percent</i>	<i>Percent</i>
Canned Evaporated and Condensed Whole Milk	76,770	87,045	80,371	4.7	-7.7
Nonfat Dry Milk, Human	63,410	148,759	125,903	98.6	-15.4
Dry Buttermilk, Total	1,956	5,447	5,825	197.8	6.9

¹ Revised.

² For dry products, shipments of bulk goods only.

³ Stocks held by manufacturers at all points and in transit.

Procedures and Reliability: Estimates included in this report are based on data provided each month by manufacturers of these products. In 32 States, the State Departments of Agriculture assist in collection of data, which eliminates duplicate reporting and reduces respondent burden. Data are collected by mail, personal and telephone interviews following the close of each month. There were 1,126 manufacturers that made one or more products in 2003. Each month, reports are generally received from all dairy plants in States with small numbers of plants. In States with large numbers of plants, survey procedures are designed to obtain monthly reports from all large plants and from a sample of small plants. Monthly estimates are based upon returns from about 70 percent of the plants which account for 70 to 90 percent of the total production of major dairy products.

Revision Policy: Monthly estimates are subject to revision the month following the preliminary estimates. Annual estimates are published in the "**Dairy Products**" report published each April which includes any revisions made to current and previous year. An attempt is made to get information from all plants for preparing these estimates

ACCESS TO REPORTS!!

For your convenience, there are several ways to obtain NASS reports, data products, and services:

INTERNET ACCESS

All NASS reports are available free of charge on the worldwide Internet. For access, connect to the Internet and go to the NASS Home Page at: www.usda.gov/nass/. Select "Today's Reports" or Publications and then Reports Calendar or Publications and then Search, by Title or Subject.

E-MAIL SUBSCRIPTION

All NASS reports are available by subscription free of charge direct to your e-mail address. Starting with the NASS Home Page at www.usda.gov/nass/, click on **Publications**, then click on the **Subscribe by E-mail** button which takes you to the page describing e-mail delivery of reports. Finally, click on **Go to the Subscription Page** and follow the instructions.

PRINTED REPORTS OR DATA PRODUCTS

CALL OUR TOLL-FREE ORDER DESK: 800-999-6779 (U.S. and Canada)
Other areas, please call 703-605-6220 FAX: 703-605-6900
(Visa, MasterCard, check, or money order acceptable for payment.)

ASSISTANCE

For **assistance** with general agricultural statistics or further information about NASS or its products or services, contact the **Agricultural Statistics Hotline** at **800-727-9540**, 7:30 a.m. to 4:00 p.m. ET, or e-mail: nass@nass.usda.gov.

The United States Department of Agriculture (USDA) prohibits discrimination in all its programs on the basis of race, color, national origin, gender, religion, age, disability, political beliefs, sexual orientation, and marital or family status. (Not all prohibited bases apply to all programs.) Persons with disabilities who require alternative means for communication of program information (braille, large print, audiotape, etc.) should contact the USDA's TARGET Center at 202-720-2600 (voice and TDD).

To file a complaint of discrimination, write USDA, Director, Office of Civil Rights, Room 326-W, Whitten Building, 1400 Independence Avenue, SW, Washington, D.C., 20250-9410, or call 202-720-5964 (voice or TDD). USDA is an equal opportunity provider and employer.