

Released February 4, 2005, by the National Agricultural Statistics Service (NASS), Agricultural Statistics Board, U.S. Department of Agriculture. For information on *Dairy Products* call Kevin Pautler at (202) 720-3570, office hours 7:30 a.m. to 4:00 p.m. ET.

December 2004 Highlights

Total cheese output (excluding cottage cheese) was 772 million pounds, 1.8 percent above December 2003 and 3.2 percent above November 2004.

American type cheese production totaled 323 million pounds, 0.4 percent above December 2003 and 7.0 percent above November 2004.

Butter production was 112 million pounds in December, 2.3 percent below November 2003 but 14.8 percent above November 2004.

Frozen dessert: (comparisons with December 2003)

Ice cream, Regular (hard) — 55.3 million gallons, down 1.4 percent.

Ice cream, Lowfat (total) — 26.9 million gallons, up 19.9 percent.

Ice cream, Nonfat (hard) — 1.19 million gallons, up 8.5 percent.

Sherbet (hard) — 2.92 million gallons, down 9.2 percent.

Frozen Yogurt (total) — 4.16 million gallons, up 6.2 percent.

Nonfat dry milk for human food: (compared with December 2003) — 108 million pounds, down 24.0 percent.

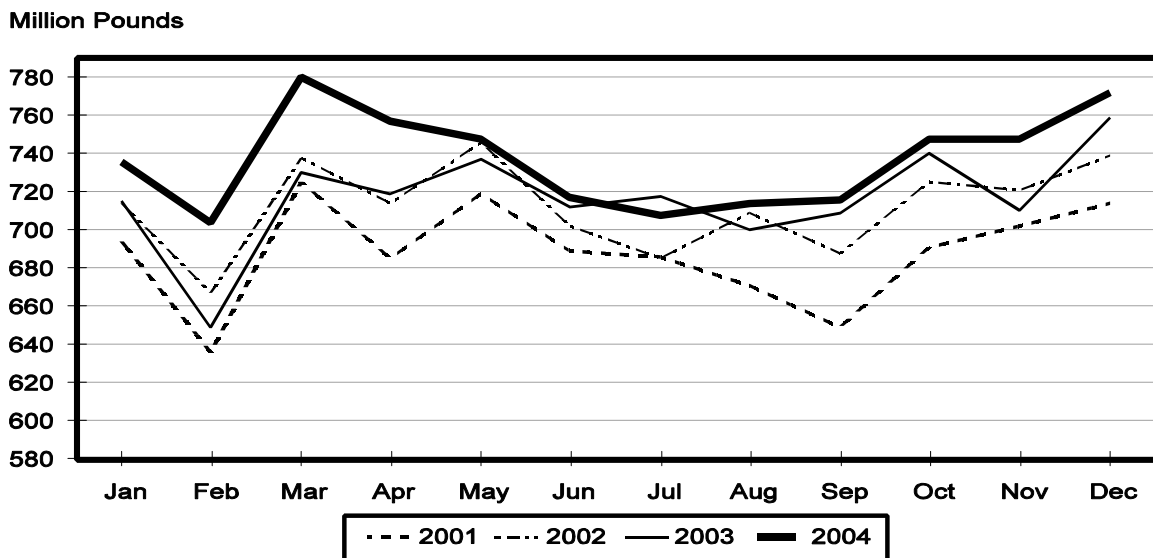
Dry whey products: (comparisons with December 2003)

Dry whey, human — 79.6 million pounds, down 2.1 percent.

Dry whey, animal — 7.36 million pounds, down 4.1 percent.

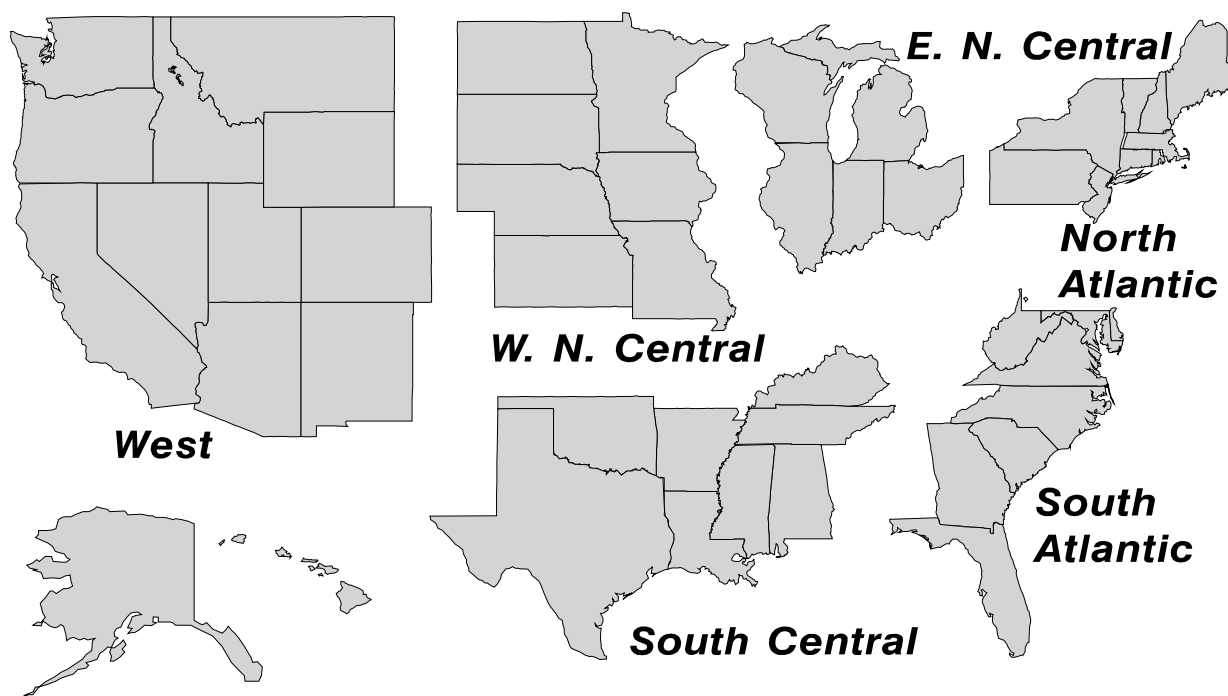
Dry whey, total — 87.0 million pounds, down 2.2 percent.

Total Cheese Production United States



U. S. Geographic Regions Dairy Products

State totals are not published when fewer than 3 firms have reported or one firm comprises more than 60 percent of the State total. If we are not able to publish a region for confidentiality reasons, it will be combined with other regions when possible. For example, if North Atlantic can not be published, then it will be combined with South Atlantic to publish Atlantic. The West North Central and East North Central will be combined, if necessary, to form North Central. In the event that neither could be published, they may be combined with South Central to publish Central. Some tables will have only limited regions shown, therefore the regions may not add to the United States total.



Contents

Page

Dairy Products: Production by Product, United States, December, 2003-2004	1
Whey and Modified Whey Products: Production, Stocks, and Prices, United States, December, 2003-2004	2
Dairy Products: Production by Product and Month, United States, 2003-2004	3
Select Commodities by State and United States, December, 2003-2004	9
Canned Milk and Dry Milk Products: Manufacturer's Shipments, Stocks, and Selling Prices, December, 2003-2004	13
Procedures and Reliability	14

**Dairy Products: Production by Product,
United States, December, 2003-2004**

Product	Dec 2003	Nov 2004 ¹	Dec 2004	Change From	
				Dec 2003	Nov 2004
	<i>1,000 Pounds</i>	<i>1,000 Pounds</i>	<i>1,000 Pounds</i>	<i>Percent</i>	<i>Percent</i>
Butter	114,599	97,489	111,907	-2.3	14.8
Cheese					
American Types ²	321,189	301,443	322,558	0.4	7.0
Cheddar	240,972	221,034	235,694	-2.2	6.6
Swiss	24,018	22,561	24,426	1.7	8.3
Brick and Muenster	7,539	7,117	6,990	-7.3	-1.8
Cream and Neufchatel	58,888	71,579	56,852	-3.5	-20.6
Hispanic	11,729	11,611	11,656	-0.6	0.4
Mozzarella	249,953	249,432	257,743	3.1	3.3
Other Italian Types	64,289	64,144	63,578	-1.1	-0.9
Total Italian Types	314,242	313,576	321,321	2.3	2.5
All Other Types	21,282	20,284	28,640	34.6	41.2
Total	758,887	748,171	772,443	1.8	3.2
Cottage Cheese, Curd ³	34,815	34,774	34,228	-1.7	-1.6
Cottage Cheese, Cream ⁴	29,042	29,439	29,290	0.9	-0.5
Cottage Cheese, Lowfat ⁵	28,782	28,806	28,434	-1.2	-1.3
Canned Evaporated and Condensed Whole Milk	42,321	45,003	47,647	12.6	5.9
Dry Whole Milk	2,608	3,873	2,446	-6.2	-36.8
Nonfat Dry Milk, Human	141,726	83,788	107,759	-24.0	28.6
Dry Skim Milk, Animal	358	564	352	-1.7	-37.6
Dry Buttermilk	5,700	3,634	5,978	4.9	64.5
Sour Cream	92,585	99,206	90,240	-2.5	-9.0
Yogurt, Plain & Flavored	178,513	189,753	206,029	15.4	8.6
	<i>1,000 Gallons</i>	<i>1,000 Gallons</i>	<i>1,000 Gallons</i>	<i>Percent</i>	<i>Percent</i>
Frozen Products					
Ice Cream, Hard	56,091	59,175	55,306	-1.4	-6.5
Ice Cream, Lowfat, Hard	7,103	7,792	8,169	15.0	4.8
Ice Cream, Lowfat, Soft	15,363	18,863	18,759	22.1	-0.6
Ice Cream, Lowfat, Total	22,466	26,655	26,928	19.9	1.0
Ice Cream, Nonfat, Hard	1,097	1,115	1,190	8.5	6.7
Sherbet, Hard	3,209	3,429	2,915	-9.2	-15.0
Water and Juice Ices	2,773	3,154	3,154	13.7	
Frozen Yogurt, Total	3,916	4,515	4,158	6.2	-7.9
Regular & Lowfat, Hard	1,228	1,487	1,148	-6.5	-22.8
Nonfat, Hard	754	796	771	2.3	-3.1
Other Frozen Dairy Products	601	636	688	14.5	8.2
Mix for Frozen Products					
Ice Cream Mix	33,679	32,723	31,021	-7.9	-5.2
Ice Cream, Lowfat, Mix	13,388	14,758	14,898	11.3	0.9
Ice Cream, Nonfat, Mix	937	733	736	-21.5	0.4
Sherbet Mix	2,330	2,586	2,012	-13.6	-22.2
Yogurt Mix	2,648	2,656	2,446	-7.6	-7.9

¹ Revised.

² Includes Cheddar, Colby, Monterey, and Jack.

³ Mostly used for processing into cream or lowfat cottage cheese.

⁴ Fat content 4 percent or more.

⁵ Fat content less than 4 percent.

**Whey and Modified Whey Products: Production, Stocks,
and Prices, United States, December, 2003-2004**

Product	Dec 2003	Nov 2004 ¹	Dec 2004	Change From	
				Dec 2003	Nov 2004
Production					
	<i>1,000 Pounds</i>	<i>1,000 Pounds</i>	<i>1,000 Pounds</i>	<i>Percent</i>	<i>Percent</i>
Condensed Whey, Solids Content ²					
Sweet-Type, Human	9,845	7,051	6,973	-29.2	-1.1
Dry Whey Products					
Dry Whey, Human	81,276	77,273	79,604	-2.1	3.0
Dry Whey, Animal	7,672	6,372	7,356	-4.1	15.4
Dry Whey, Total	88,948	83,645	86,960	-2.2	4.0
Reduced Lactose and Minerals					
Human Food	4,367	2,453	3,190	-27.0	30.0
Animal Feed	3,453	3,702	4,256	23.3	15.0
Lactose, Human and Animal	51,782	55,587	59,405	14.7	6.9
Whey					
Protein Concentrate, Human ³	25,948	25,984	28,210	8.7	8.6
Protein Concentrate, Animal ³	3,961	4,082	4,486	13.3	9.9
Manufacturers' Stocks End-of-Month ⁴					
	<i>1,000 Pounds</i>	<i>1,000 Pounds</i>	<i>1,000 Pounds</i>	<i>Percent</i>	<i>Percent</i>
Dry Whey Products					
Dry Whey, Human	40,562	35,264	38,175	-5.9	8.3
Dry Whey, Animal	5,415	4,240	4,690	-13.4	10.6
Reduced Lactose and Minerals					
Human and Animal ⁵	7,278	5,567	5,181	-28.8	-6.9
Lactose, Human and Animal	49,983	73,607	74,557	49.2	1.3
Whey Protein Concentrate, Human ³	24,075	25,033	26,521	10.2	5.9
Whey Protein Concentrate, Animal ³	2,114	3,714	2,538	20.1	-31.7
Manufacturers' Selling Price ⁶					
	<i>Cents per Pound</i>	<i>Cents per Pound</i>	<i>Cents per Pound</i>	<i>Cents Change</i>	<i>Cents Change</i>
Dry Whey, Animal	19.0	22.8	21.9	2.9	-0.9

¹ Revised.

² Final marketable product only. Does not include quantity used or shipped to another plant for further processing into dry whey or modified whey products. Does not include sweet-type, animal whey.

³ Whey Protein Concentrate, 25.0 to 89.9 percent.

⁴ Stocks held by manufacturers at all points and in transit.

⁵ Reduced lactose and minerals stocks combined to avoid disclosure of individual operations.

⁶ Prices for bulk goods, f.o.b. plant. Average monthly prices reported by firms.

**Dairy Products: Production by Product and Month,
United States, 2003-2004 ¹**

Product and Month	By Month			Cumulative		
	2003	2004	Change From 2003	2003	2004	Change From 2003
	<i>1,000 Pounds</i>	<i>1,000 Pounds</i>	<i>Percent</i>	<i>1,000 Pounds</i>	<i>1,000 Pounds</i>	<i>Percent</i>
Total Cheese						
Jan	714,838	735,851	2.9	714,838	735,851	2.9
Feb	648,644	704,288	8.6	1,363,482	1,440,139	5.6
Mar	730,287	779,599	6.8	2,093,769	2,219,738	6.0
Apr	718,834	756,778	5.3	2,812,603	2,976,516	5.8
May	737,027	748,351	1.5	3,549,630	3,724,867	4.9
Jun	712,309	717,286	0.7	4,261,939	4,442,153	4.2
Jul	718,258	707,884	-1.4	4,980,197	5,150,037	3.4
Aug	700,132	714,001	2.0	5,680,329	5,864,038	3.2
Sep	708,708	716,075	1.0	6,389,037	6,580,113	3.0
Oct	740,016	748,059	1.1	7,129,053	7,328,172	2.8
Nov	710,036	748,171	5.4	7,839,089	8,076,343	3.0
Dec	758,887	772,443	1.8	8,597,976	8,848,786	2.9
American Cheese						
Jan	318,428	321,380	0.9	318,428	321,380	0.9
Feb	286,295	297,241	3.8	604,723	618,621	2.3
Mar	317,833	324,194	2.0	922,556	942,815	2.2
Apr	307,087	322,411	5.0	1,229,643	1,265,226	2.9
May	319,462	331,908	3.9	1,549,105	1,597,134	3.1
Jun	305,049	311,376	2.1	1,854,154	1,908,510	2.9
Jul	306,675	302,784	-1.3	2,160,829	2,211,294	2.3
Aug	299,117	298,615	-0.2	2,459,946	2,509,909	2.0
Sep	292,222	295,228	1.0	2,752,168	2,805,137	1.9
Oct	305,067	310,384	1.7	3,057,235	3,115,521	1.9
Nov	291,085	301,443	3.6	3,348,320	3,416,964	2.1
Dec	321,189	322,558	0.4	3,669,509	3,739,522	1.9
Cheddar Cheese						
Jan	246,690	244,808	-0.8	246,690	244,808	-0.8
Feb	219,377	223,308	1.8	466,067	468,116	0.4
Mar	240,590	241,804	0.5	706,657	709,920	0.5
Apr	231,685	243,367	5.0	938,342	953,287	1.6
May	239,124	251,316	5.1	1,177,466	1,204,603	2.3
Jun	229,741	234,465	2.1	1,407,207	1,439,068	2.3
Jul	229,870	218,284	-5.0	1,637,077	1,657,352	1.2
Aug	223,183	214,339	-4.0	1,860,260	1,871,691	0.6
Sep	214,603	213,917	-0.3	2,074,863	2,085,608	0.5
Oct	220,878	221,976	0.5	2,295,741	2,307,584	0.5
Nov	212,629	221,034	4.0	2,508,370	2,528,618	0.8
Dec	240,972	235,694	-2.2	2,749,342	2,764,312	0.5

See footnote(s) at end of table.

-continued

**Dairy Products: Production by Product and Month,
United States, 2003-2004 ¹ (continued)**

Product and Month	By Month			Cumulative		
	2003	2004	Change From 2003	2003	2004	Change From 2003
	<i>1,000 Pounds</i>	<i>1,000 Pounds</i>	<i>Percent</i>	<i>1,000 Pounds</i>	<i>1,000 Pounds</i>	<i>Percent</i>
Italian Cheese						
Jan	292,100	307,046	5.1	292,100	307,046	5.1
Feb	265,492	299,501	12.8	557,592	606,547	8.8
Mar	299,783	333,416	11.2	857,375	939,963	9.6
Apr	297,684	309,418	3.9	1,155,059	1,249,381	8.2
May	302,565	302,462		1,457,624	1,551,843	6.5
Jun	293,040	291,669	-0.5	1,750,664	1,843,512	5.3
Jul	293,823	288,533	-1.8	2,044,487	2,132,045	4.3
Aug	288,787	295,023	2.2	2,333,274	2,427,068	4.0
Sep	287,912	289,042	0.4	2,621,186	2,716,110	3.6
Oct	297,437	301,111	1.2	2,918,623	3,017,221	3.4
Nov	289,184	313,576	8.4	3,207,807	3,330,797	3.8
Dec	314,242	321,321	2.3	3,522,049	3,652,118	3.7
Mozzarella						
Jan	231,028	244,677	5.9	231,028	244,677	5.9
Feb	211,519	240,013	13.5	442,547	484,690	9.5
Mar	237,475	262,896	10.7	680,022	747,586	9.9
Apr	236,320	249,677	5.7	916,342	997,263	8.8
May	246,188	244,528	-0.7	1,162,530	1,241,791	6.8
Jun	236,757	234,903	-0.8	1,399,287	1,476,694	5.5
Jul	236,511	227,758	-3.7	1,635,798	1,704,452	4.2
Aug	232,518	230,943	-0.7	1,868,316	1,935,395	3.6
Sep	225,454	224,988	-0.2	2,093,770	2,160,383	3.2
Oct	232,061	236,004	1.7	2,325,831	2,396,387	3.0
Nov	230,315	249,432	8.3	2,556,146	2,645,819	3.5
Dec	249,953	257,743	3.1	2,806,099	2,903,562	3.5
Other Italian						
Jan	61,072	62,369	2.1	61,072	62,369	2.1
Feb	53,973	59,488	10.2	115,045	121,857	5.9
Mar	62,308	70,520	13.2	177,353	192,377	8.5
Apr	61,364	59,741	-2.6	238,717	252,118	5.6
May	56,377	57,934	2.8	295,094	310,052	5.1
Jun	56,283	56,766	0.9	351,377	366,818	4.4
Jul	57,312	60,775	6.0	408,689	427,593	4.6
Aug	56,269	64,080	13.9	464,958	491,673	5.7
Sep	62,458	64,054	2.6	527,416	555,727	5.4
Oct	65,376	65,107	-0.4	592,792	620,834	4.7
Nov	58,869	64,144	9.0	651,661	684,978	5.1
Dec	64,289	63,578	-1.1	715,950	748,556	4.6

See footnote(s) at end of table.

-continued

**Dairy Products: Production by Product and Month,
United States, 2003-2004 ¹ (continued)**

Product and Month	By Month			Cumulative		
	2003	2004	Change From 2003	2003	2004	Change From 2003
	<i>1,000 Pounds</i>	<i>1,000 Pounds</i>	<i>Percent</i>	<i>1,000 Pounds</i>	<i>1,000 Pounds</i>	<i>Percent</i>
Butter						
Jan	141,912	131,859	-7.1	141,912	131,859	-7.1
Feb	128,086	105,788	-17.4	269,998	237,647	-12.0
Mar	126,400	96,741	-23.5	396,398	334,388	-15.6
Apr	122,844	96,521	-21.4	519,242	430,909	-17.0
May	114,895	106,597	-7.2	634,137	537,506	-15.2
Jun	84,169	96,975	15.2	718,306	634,481	-11.7
Jul	80,050	91,229	14.0	798,356	725,710	-9.1
Aug	70,916	88,618	25.0	869,272	814,328	-6.3
Sep	73,267	92,128	25.7	942,539	906,456	-3.8
Oct	96,784	101,549	4.9	1,039,323	1,008,005	-3.0
Nov	88,436	97,489	10.2	1,127,759	1,105,494	-2.0
Dec	114,599	111,907	-2.3	1,242,358	1,217,401	-2.0
Nonfat Dry Milk, Human						
Jan	141,299	120,490	-14.7	141,299	120,490	-14.7
Feb	137,213	115,772	-15.6	278,512	236,262	-15.2
Mar	155,430	118,018	-24.1	433,942	354,280	-18.4
Apr	159,997	134,057	-16.2	593,939	488,337	-17.8
May	163,883	151,108	-7.8	757,822	639,445	-15.6
Jun	139,992	143,830	2.7	897,814	783,275	-12.8
Jul	127,915	134,036	4.8	1,025,729	917,311	-10.6
Aug	107,060	113,754	6.3	1,132,789	1,031,065	-9.0
Sep	96,774	93,936	-2.9	1,229,563	1,125,001	-8.5
Oct	106,887	94,769	-11.3	1,336,450	1,219,770	-8.7
Nov	110,865	83,788	-24.4	1,447,315	1,303,558	-9.9
Dec	141,726	107,759	-24.0	1,589,041	1,411,317	-11.2
Total Dry Whey ²						
Jan	95,268	87,073	-8.6	95,268	87,073	-8.6
Feb	86,466	83,904	-3.0	181,734	170,977	-5.9
Mar	98,511	93,745	-4.8	280,245	264,722	-5.5
Apr	92,801	91,978	-0.9	373,046	356,700	-4.4
May	97,256	90,491	-7.0	470,302	447,191	-4.9
Jun	92,410	86,879	-6.0	562,712	534,070	-5.1
Jul	93,709	83,851	-10.5	656,421	617,921	-5.9
Aug	87,643	86,919	-0.8	744,064	704,840	-5.3
Sep	84,812	80,057	-5.6	828,876	784,897	-5.3
Oct	86,176	80,577	-6.5	915,052	865,474	-5.4
Nov	82,343	83,645	1.6	997,395	949,119	-4.8
Dec	88,948	86,960	-2.2	1,086,343	1,036,079	-4.6

See footnote(s) at end of table.

-continued

**Dairy Products: Production by Product and Month,
United States, 2003-2004 ¹ (continued)**

Product and Month	By Month			Cumulative		
	2003	2004	Change From 2003	2003	2004	Change From 2003
	<i>1,000 Pounds</i>	<i>1,000 Pounds</i>	<i>Percent</i>	<i>1,000 Pounds</i>	<i>1,000 Pounds</i>	<i>Percent</i>
Cream Cottage Cheese						
Jan	32,071	31,897	-0.5	32,071	31,897	-0.5
Feb	29,246	30,642	4.8	61,317	62,539	2.0
Mar	31,570	34,940	10.7	92,887	97,479	4.9
Apr	33,847	31,360	-7.3	126,734	128,839	1.7
May	32,722	30,688	-6.2	159,456	159,527	
Jun	33,694	31,682	-6.0	193,150	191,209	-1.0
Jul	34,767	32,708	-5.9	227,917	223,917	-1.8
Aug	34,175	33,308	-2.5	262,092	257,225	-1.9
Sep	33,043	32,348	-2.1	295,135	289,573	-1.9
Oct	32,276	31,406	-2.7	327,411	320,979	-2.0
Nov	28,723	29,439	2.5	356,134	350,418	-1.6
Dec	29,042	29,290	0.9	385,176	379,708	-1.4
Lowfat Cottage Cheese						
Jan	31,263	31,839	1.8	31,263	31,839	1.8
Feb	29,543	30,591	3.5	60,806	62,430	2.7
Mar	32,003	35,649	11.4	92,809	98,079	5.7
Apr	32,910	32,172	-2.2	125,719	130,251	3.6
May	32,039	34,300	7.1	157,758	164,551	4.3
Jun	30,301	34,139	12.7	188,059	198,690	5.7
Jul	32,910	32,558	-1.1	220,969	231,248	4.7
Aug	33,182	33,948	2.3	254,151	265,196	4.3
Sep	33,974	33,765	-0.6	288,125	298,961	3.8
Oct	33,398	31,472	-5.8	321,523	330,433	2.8
Nov	29,728	28,806	-3.1	351,251	359,239	2.3
Dec	28,782	28,434	-1.2	380,033	387,673	2.0
	<i>1,000 Gallons</i>	<i>1,000 Gallons</i>	<i>Percent</i>	<i>1,000 Gallons</i>	<i>1,000 Gallons</i>	<i>Percent</i>
Ice Cream, Hard						
Jan	69,795	59,132	-15.3	69,795	59,132	-15.3
Feb	70,821	65,823	-7.1	140,616	124,955	-11.1
Mar	75,716	78,711	4.0	216,332	203,666	-5.9
Apr	84,367	77,391	-8.3	300,699	281,057	-6.5
May	80,900	75,073	-7.2	381,599	356,130	-6.7
Jun	84,698	85,760	1.3	466,297	441,890	-5.2
Jul	84,507	78,759	-6.8	550,804	520,649	-5.5
Aug	77,382	73,422	-5.1	628,186	594,071	-5.4
Sep	73,398	70,675	-3.7	701,584	664,746	-5.3
Oct	69,761	68,468	-1.9	771,345	733,214	-4.9
Nov	59,530	59,175	-0.6	830,875	792,389	-4.6
Dec	56,091	55,306	-1.4	886,966	847,695	-4.4

See footnote(s) at end of table.

-continued

**Dairy Products: Production by Product and Month,
United States, 2003-2004 ¹ (continued)**

Product and Month	By Month			Cumulative		
	2003	2004	Change From 2003	2003	2004	Change From 2003
	<i>1,000 Gallons</i>	<i>1,000 Gallons</i>	<i>Percent</i>	<i>1,000 Gallons</i>	<i>1,000 Gallons</i>	<i>Percent</i>
Ice Cream, Lowfat						
Jan	23,544	25,947	10.2	23,544	25,947	10.2
Feb	24,272	26,832	10.5	47,816	52,779	10.4
Mar	29,618	36,689	23.9	77,434	89,468	15.5
Apr	32,249	38,960	20.8	109,683	128,428	17.1
May	34,534	38,859	12.5	144,217	167,287	16.0
Jun	36,902	43,613	18.2	181,119	210,900	16.4
Jul	38,783	42,117	8.6	219,902	253,017	15.1
Aug	33,504	38,783	15.8	253,406	291,800	15.2
Sep	28,364	33,621	18.5	281,770	325,421	15.5
Oct	27,413	30,233	10.3	309,183	355,654	15.0
Nov	21,285	26,655	25.2	330,468	382,309	15.7
Dec	22,466	26,928	19.9	352,934	409,237	16.0
Ice Cream, NF, Hard						
Jan	1,440	1,430	-0.7	1,440	1,430	-0.7
Feb	1,382	1,482	7.2	2,822	2,912	3.2
Mar	1,593	1,693	6.3	4,415	4,605	4.3
Apr	1,830	1,972	7.8	6,245	6,577	5.3
May	1,839	1,795	-2.4	8,084	8,372	3.6
Jun	1,865	1,928	3.4	9,949	10,300	3.5
Jul	1,858	1,792	-3.6	11,807	12,092	2.4
Aug	1,478	1,645	11.3	13,285	13,737	3.4
Sep	1,564	1,505	-3.8	14,849	15,242	2.6
Oct	1,681	1,655	-1.5	16,530	16,897	2.2
Nov	1,344	1,115	-17.0	17,874	18,012	0.8
Dec	1,097	1,190	8.5	18,971	19,202	1.2
Sherbet, Hard						
Jan	3,986	3,766	-5.5	3,986	3,766	-5.5
Feb	4,311	3,973	-7.8	8,297	7,739	-6.7
Mar	4,683	5,609	19.8	12,980	13,348	2.8
Apr	5,011	5,171	3.2	17,991	18,519	2.9
May	5,058	4,944	-2.3	23,049	23,463	1.8
Jun	5,582	5,805	4.0	28,631	29,268	2.2
Jul	5,053	4,693	-7.1	33,684	33,961	0.8
Aug	4,552	4,632	1.8	38,236	38,593	0.9
Sep	4,255	4,235	-0.5	42,491	42,828	0.8
Oct	3,697	3,582	-3.1	46,188	46,410	0.5
Nov	3,169	3,429	8.2	49,357	49,839	1.0
Dec	3,209	2,915	-9.2	52,566	52,754	0.4

See footnote(s) at end of table.

-continued

**Dairy Products: Production by Product and Month,
United States, 2003-2004 ¹ (continued)**

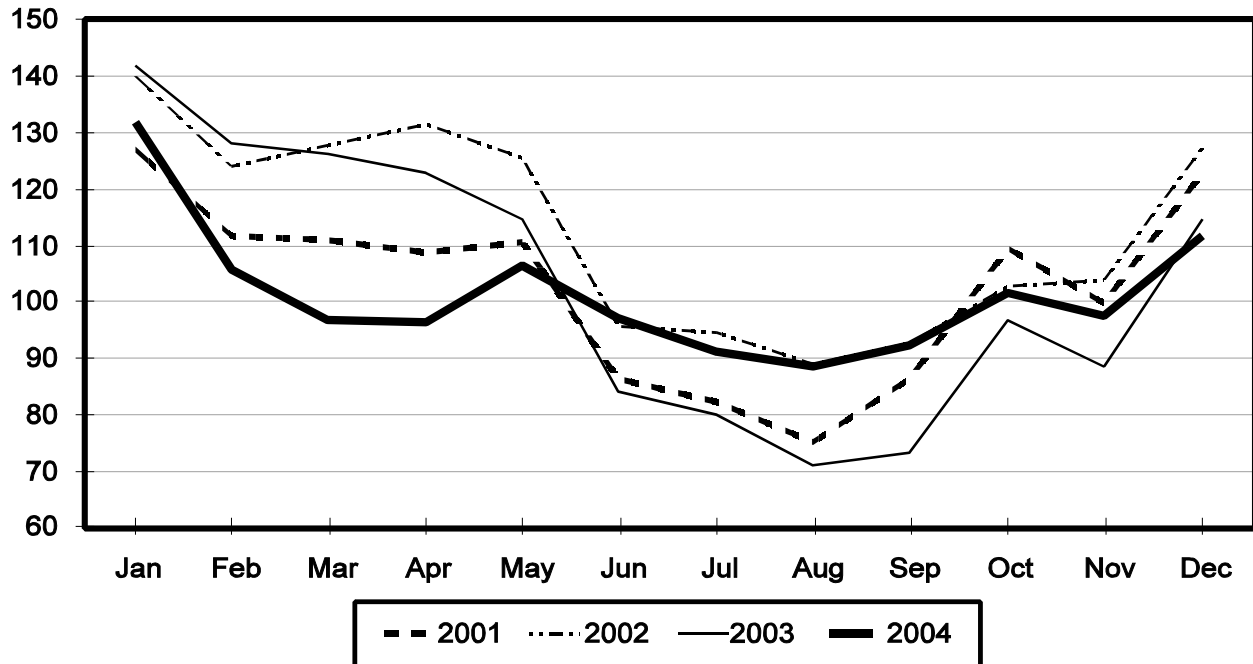
Product and Month	By Month			Cumulative		
	2003	2004	Change From 2003	2003	2004	Change From 2003
	<i>1,000 Gallons</i>	<i>1,000 Gallons</i>	<i>Percent</i>	<i>1,000 Gallons</i>	<i>1,000 Gallons</i>	<i>Percent</i>
Frozen Yogurt						
Jan	5,271	4,403	-16.5	5,271	4,403	-16.5
Feb	5,731	4,973	-13.2	11,002	9,376	-14.8
Mar	5,803	6,246	7.6	16,805	15,622	-7.0
Apr	7,025	6,016	-14.4	23,830	21,638	-9.2
May	6,558	6,282	-4.2	30,388	27,920	-8.1
Jun	6,211	6,419	3.3	36,599	34,339	-6.2
Jul	6,057	5,811	-4.1	42,656	40,150	-5.9
Aug	5,953	6,023	1.2	48,609	46,173	-5.0
Sep	5,818	5,416	-6.9	54,427	51,589	-5.2
Oct	5,282	4,813	-8.9	59,709	56,402	-5.5
Nov	4,399	4,515	2.6	64,108	60,917	-5.0
Dec	3,916	4,158	6.2	68,024	65,075	-4.3

¹ November 2004 data revised.

² Excludes all modified dry whey products.

Total Butter Production United States

Million Pounds



**Total Cheese, Excluding Cottage Cheese: Production by
State and United States, December 2003-2004**

State	Dec 2003	Nov ¹ 2004	Dec 2004	Change From	
				Dec 2003	Nov 2004
	<i>1,000 Pounds</i>	<i>1,000 Pounds</i>	<i>1,000 Pounds</i>	<i>Percent</i>	<i>Percent</i>
CA	163,667	170,232	184,485	12.7	8.4
IL	8,196	7,635	7,748	-5.5	1.5
IA	13,399	12,676	14,010	4.6	10.5
MA	89	101	97	9.0	-4.0
MN	53,100	49,177	52,975	-0.2	7.7
MO	7,559	9,611	6,597	-12.7	-31.4
NY	63,029	60,607	58,809	-6.7	-3.0
OH	14,958	14,917	16,023	7.1	7.4
PA	34,499	33,754	33,264	-3.6	-1.5
SD	11,665	14,373	14,781	26.7	2.8
UT	6,352	4,719	6,017	-5.3	27.5
WI	200,444	195,578	197,061	-1.7	0.8
Oth Sts ²	181,930	174,791	180,576	-0.7	3.3
US	758,887	748,171	772,443	1.8	3.2
N Atlantic	113,529	109,937	106,297	-6.4	-3.3
S Atlantic	2,537	2,943	2,479	-2.3	-15.8
E N Central	237,449	227,857	234,946	-1.1	3.1
W N Central	88,926	89,355	92,060	3.5	3.0
S Central	7,427	7,099	7,229	-2.7	1.8
West	309,019	310,980	329,432	6.6	5.9

¹ Revised.

² States not shown when fewer than 3 plants reported or individual plant operations could be disclosed. Percent change shown only when comparable States are included in the calculation.

American Cheese: Production by State and United States, December 2003-2004

State	Dec 2003	Nov ¹ 2004	Dec 2004	Change From	
				Dec 2003	Nov 2004
	<i>1,000 Pounds</i>	<i>1,000 Pounds</i>	<i>1,000 Pounds</i>	<i>Percent</i>	<i>Percent</i>
CA	69,035	69,441	73,938	7.1	6.5
ID	43,906	45,250	47,608	8.4	5.2
IA	10,745	9,905	11,108	3.4	12.1
MN	50,941	46,755	50,387	-1.1	7.8
NY	8,443	5,021	5,693	-32.6	13.4
OH	2,859	2,219	2,522	-11.8	13.7
OR	8,507	9,348	9,621	13.1	2.9
SD	7,289	6,844	7,209	-1.1	5.3
WI	72,759	69,165	73,700	1.3	6.6
Oth Sts ²	46,705	37,495	40,772	-12.7	8.7
US	321,189	301,443	322,558	0.4	7.0
Atlantic	13,551	10,377	10,294	-24.0	-0.8
E N Central	76,550	72,291	77,177	0.8	6.8
W N Central	69,539	63,864	69,174	-0.5	8.3
S Central	4,952	3,800	4,826	-2.5	27.0
West	156,597	151,111	161,087	2.9	6.6

¹ Revised.

² States not shown when fewer than 3 plants reported or individual plant operations could be disclosed. Percent change shown only when comparable States are included in the calculation.

Cheddar Cheese: Production by State and United States, December 2003-2004

State	Dec 2003	Nov ¹ 2004	Dec 2004	Change From	
				Dec 2003	Nov 2004
	<i>1,000 Pounds</i>	<i>1,000 Pounds</i>	<i>1,000 Pounds</i>	<i>Percent</i>	<i>Percent</i>
CA	44,969	44,344	46,838	4.2	5.6
ID	21,618	19,894	20,191	-6.6	1.5
MN	46,213	42,971	46,281	0.1	7.7
NY	8,297	4,905	5,573	-32.8	13.6
SD	4,588	5,245	4,765	3.9	-9.2
WI	56,936	53,780	58,400	2.6	8.6
Oth Sts ²	58,351	49,895	53,646	-8.1	7.5
US	240,972	221,034	235,694	-2.2	6.6
Atlantic	12,927	9,855	9,475	-26.7	-3.9
E N Cen	58,977	55,508	60,322	2.3	8.7
W N Cen	58,562	55,586	58,959	0.7	6.1
S Cen	4,951	3,799	4,825	-2.5	27.0
West	105,555	96,286	102,113	-3.3	6.1

¹ Revised.

² States not shown when fewer than 3 plants reported or individual plant operations could be disclosed. Percent change shown only when comparable States are included in the calculation.

Mozzarella Cheese: Production by State and United States, December 2003-2004

State	Dec 2003	Nov ¹ 2004	Dec 2004	Change From	
				Dec 2003	Nov 2004
	<i>1,000 Pounds</i>	<i>1,000 Pounds</i>	<i>1,000 Pounds</i>	<i>Percent</i>	<i>Percent</i>
CA	72,298	80,234	81,486	12.7	1.6
NY	16,340	13,867	15,118	-7.5	9.0
PA	17,301	16,704	18,113	4.7	8.4
WI	70,106	65,510	66,300	-5.4	1.2
Oth Sts ²	73,908	73,117	76,726	3.8	4.9
US	249,953	249,432	257,743	3.1	3.3
Atlantic ³	41,722	38,830	40,284	-3.4	3.7
E N Central	83,157	74,217	79,495	-4.4	7.1
West	119,177	127,405	129,124	8.3	1.3

¹ Revised.

² States not shown when fewer than 3 plants reported or individual plant operations could be disclosed. Percent change shown only when comparable States are included in the calculation.

³ Region totals may not add to U.S. when compiled regions could not be disclosed.

Butter: Production by State and United States, December 2003-2004

State	Dec 2003	Nov ¹ 2004	Dec 2004	Change From	
				Dec 2003	Nov 2004
	<i>1,000 Pounds</i>	<i>1,000 Pounds</i>	<i>1,000 Pounds</i>	<i>Percent</i>	<i>Percent</i>
CA	33,887	33,843	36,159	6.7	6.8
NY	2,062	1,200	1,695	-17.8	41.3
PA	5,669	4,571	5,077	-10.4	11.1
WI	26,699	27,672	33,900	27.0	22.5
Oth Sts ²	46,282	30,203	35,076	-24.2	16.1
US	114,599	97,489	111,907	-2.3	14.8
N Atlantic ³	11,184	5,930	6,895	-38.3	16.3
E N Central	30,932	28,972	36,479	17.9	25.9
W N Central	9,750	7,028	4,010	-58.9	-42.9
West	49,502	45,542	50,516	2.0	10.9

¹ Revised.

² States not shown when fewer than 3 plants reported or individual plant operations could be disclosed. Percent change shown only when comparable States are included in the calculation.

³ Region totals may not add to U.S. when compiled regions could not be disclosed.

**Nonfat Dry Milk, Human: Production by State
and United States, December 2003-2004**

State	Dec 2003	Nov ¹ 2004	Dec 2004	Change From	
				Dec 2003	Nov 2004
	<i>1,000 Pounds</i>	<i>1,000 Pounds</i>	<i>1,000 Pounds</i>	<i>Percent</i>	<i>Percent</i>
CA	66,057	53,325	53,439	-19.1	0.2
Oth Sts ²	75,669	30,463	54,320	-28.2	78.3
US	141,726	83,788	107,759	-24.0	28.6
Atlantic	16,076	4,774	14,133	-12.1	196.0
E N Central	5,845	2,011	3,309	-43.4	64.5
W N Central	6,176	2,813	4,729	-23.4	68.1
S Central	5,713	2,391	4,659	-18.4	94.9
West	107,916	71,799	80,929	-25.0	12.7

¹ Revised.

² States not shown when fewer than 3 plants reported or individual plant operations could be disclosed. Percent change shown only when comparable States are included in the calculation.

**Dry Whey, Human: Production by State
and United States, December 2003-2004**

State	Dec 2003	Nov ¹ 2004	Dec 2004	Change From	
				Dec 2003	Nov 2004
	<i>1,000 Pounds</i>	<i>1,000 Pounds</i>	<i>1,000 Pounds</i>	<i>Percent</i>	<i>Percent</i>
CA	11,092	9,347	10,202	-8.0	9.1
MN	6,364	3,754	3,888	-38.9	3.6
NY	9,264	9,404	9,955	7.5	5.9
PA	8,578	8,044	8,460	-1.4	5.2
UT	2,205	1,846	2,017	-8.5	9.3
WI	24,380	25,724	23,800	-2.4	-7.5
Oth Sts ²	19,393	19,154	21,282	9.7	11.1
US	81,276	77,273	79,604	-2.1	3.0
Atlantic	17,842	17,448	18,415	3.2	5.5
Central	39,679	36,793	36,686	-7.5	-0.3
West	23,755	23,032	24,503	3.1	6.4

¹ Revised.

² States not shown when fewer than 3 plants reported or individual plant operations could be disclosed. Percent change shown only when comparable States are included in the calculation.

Ice Cream, Hard: Production by State and United States, December 2003-2004

State	Dec 2003	Nov ¹ 2004	Dec 2004	Change From	
				Dec 2003	Nov 2004
	<i>1,000 Gallons</i>	<i>1,000 Gallons</i>	<i>1,000 Gallons</i>	<i>Percent</i>	<i>Percent</i>
CA	6,864	8,365	6,094	-11.2	-27.1
FL	2,087	1,800	1,850	-11.4	2.8
IL	2,474	2,342	2,589	4.6	10.5
IN	5,870	6,935	6,724	14.5	-3.0
MD	936	1,000	936		-6.4
MA	3,779	3,863	4,053	7.3	4.9
MI	1,256	900	1,192	-5.1	32.4
MN	2,471	2,718	3,117	26.1	14.7
MO	1,263	1,031	1,329	5.2	28.9
NY	1,813	1,775	1,445	-20.3	-18.6
NC	1,041	947	966	-7.2	2.0
OH	1,403	1,443	1,634	16.5	13.2
OR	1,135	870	880	-22.5	1.1
PA	2,957	3,467	2,577	-12.9	-25.7
TN	873	1,171	1,119	28.2	-4.4
TX	3,900	2,870	2,999	-23.1	4.5
UT	1,852	1,851	1,609	-13.1	-13.1
Oth Sts ²	14,117	15,827	14,193	0.5	-10.3
US	56,091	59,175	55,306	-1.4	-6.5
N Atlantic	10,483	11,140	10,157	-3.1	-8.8
S Atlantic	5,236	4,893	4,693	-10.4	-4.1
E N Central	11,572	12,265	12,601	8.9	2.7
W N Central	8,922	9,537	10,051	12.7	5.4
S Central	7,628	7,403	7,179	-5.9	-3.0
West	12,250	13,937	10,625	-13.3	-23.8

¹ Revised.

² States not shown when fewer than 3 plants reported or individual plant operations could be disclosed. Percent change shown only when comparable States are included in the calculation.

**Canned Milk and Dry Milk Products: Manufacturers' Shipments,
Stocks, and Selling Prices, December, 2003-2004**

Product	Dec 2003	Nov 2004 ¹	Dec 2004	Change From	
				Dec 2003	Nov 2004
	Manufacturers' Shipments ²				
	<i>1,000 Pounds</i>	<i>1,000 Pounds</i>	<i>1,000 Pounds</i>	<i>Percent</i>	<i>Percent</i>
Nonfat Dry Milk, Human	96,193	92,845	110,547	14.9	19.1
	Manufacturers' Stocks End-of-Month ³				
	<i>1,000 Pounds</i>	<i>1,000 Pounds</i>	<i>1,000 Pounds</i>	<i>Percent</i>	<i>Percent</i>
Canned Evaporated and Condensed Whole Milk	36,753	37,396	34,155	-7.1	-8.7
Nonfat Dry Milk, Human	103,887	93,588	98,052	-5.6	4.8
Dry Buttermilk, Total	2,938	7,180	9,800	233.6	36.5

¹ Revised.

² For dry products, shipments of bulk goods only.

³ Stocks held by manufacturers at all points and in transit.

Procedures and Reliability: Estimates included in this report are based on data provided each month by manufacturers of these products. In 32 States, the State Departments of Agriculture assist in collection of data, which eliminates duplicate reporting and reduces respondent burden. Data are collected by mail, personal and telephone interviews following the close of each month. There were 1,126 manufacturers that made one or more products in 2003. Each month, reports are generally received from all dairy plants in States with small numbers of plants. In States with large numbers of plants, survey procedures are designed to obtain monthly reports from all large plants and from a sample of small plants. Monthly estimates are based upon returns from about 70 percent of the plants which account for 70 to 90 percent of the total production of major dairy products.

Revision Policy: Monthly estimates are subject to revision the month following the preliminary estimates. Annual estimates are published in the "**Dairy Products**" report published each April which includes any revisions made to current and previous year. An attempt is made to get information from all plants for preparing these estimates

ACCESS TO REPORTS!!

For your convenience, there are several ways to obtain NASS reports, data products, and services:

INTERNET ACCESS

All NASS reports are available free of charge on the worldwide Internet. For access, connect to the Internet and go to the NASS Home Page at: www.usda.gov/nass/. Select "Today's Reports" or Publications and then Reports Calendar or Publications and then Search, by Title or Subject.

E-MAIL SUBSCRIPTION

All NASS reports are available by subscription free of charge direct to your e-mail address. Starting with the NASS Home Page at www.usda.gov/nass/, click on **Publications**, then click on the **Subscribe by E-mail** button which takes you to the page describing e-mail delivery of reports. Finally, click on **Go to the Subscription Page** and follow the instructions.

PRINTED REPORTS OR DATA PRODUCTS

CALL OUR TOLL-FREE ORDER DESK: 800-999-6779 (U.S. and Canada)
Other areas, please call 703-605-6220 FAX: 703-605-6900
(Visa, MasterCard, check, or money order acceptable for payment.)

ASSISTANCE

For **assistance** with general agricultural statistics or further information about NASS or its products or services, contact the **Agricultural Statistics Hotline** at **800-727-9540**, 7:30 a.m. to 4:00 p.m. ET, or e-mail: nass@nass.usda.gov.

The United States Department of Agriculture (USDA) prohibits discrimination in all its programs on the basis of race, color, national origin, gender, religion, age, disability, political beliefs, sexual orientation, and marital or family status. (Not all prohibited bases apply to all programs.) Persons with disabilities who require alternative means for communication of program information (braille, large print, audiotape, etc.) should contact the USDA's TARGET Center at 202-720-2600 (voice and TDD).

To file a complaint of discrimination, write USDA, Director, Office of Civil Rights, Room 326-W, Whitten Building, 1400 Independence Avenue, SW, Washington, D.C., 20250-9410, or call 202-720-5964 (voice or TDD). USDA is an equal opportunity provider and employer.