

Released March 4, 2005, by the National Agricultural Statistics Service (NASS), Agricultural Statistics Board, U.S. Department of Agriculture. For information on *Dairy Products* call Bill Weaver at (202) 720-3570, office hours 7:30 a.m. to 4:00 p.m. ET.

## January 2005 Highlights

**Total cheese** output (excluding cottage cheese) was 754 million pounds, 2.4 percent above January 2004 but 2.4 percent below December 2004.

**American type cheese** production totaled 322 million pounds, 0.1 percent above January 2004 but 0.6 percent below December 2004.

**Butter** production was 126 million pounds in January, 4.6 percent below January 2004 but 9.8 percent above December 2004.

**Frozen dessert:** (comparisons with January 2004)

Ice cream, Regular (hard) --- 60.4 million gallons, up 2.1 percent.

Ice cream, Lowfat (total) --- 26.8 million gallons, up 3.2 percent.

Ice cream, Nonfat (hard) --- 1.19 million gallons, down 16.6 percent.

Sherbet (hard) --- 4.19 million gallons, up 11.4 percent.

Frozen Yogurt (total) --- 4.36 million gallons, down 1.0 percent.

**Nonfat dry milk for human food:** (compared with January 2004) --- 93.8 million pounds, down 22.2 percent.

**Dry whey products:** (comparisons with January 2004)

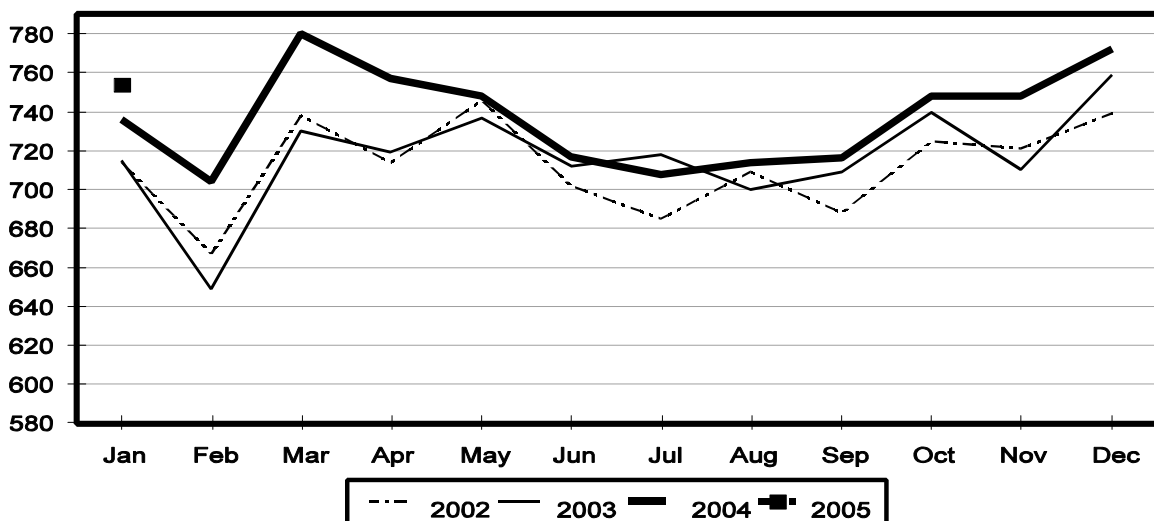
Dry whey, human --- 79.9 million pounds, up slightly.

Dry whey, animal --- 6.29 million pounds, down 13.8 percent.

Dry whey, total --- 86.2 million pounds, down 1.0 percent.

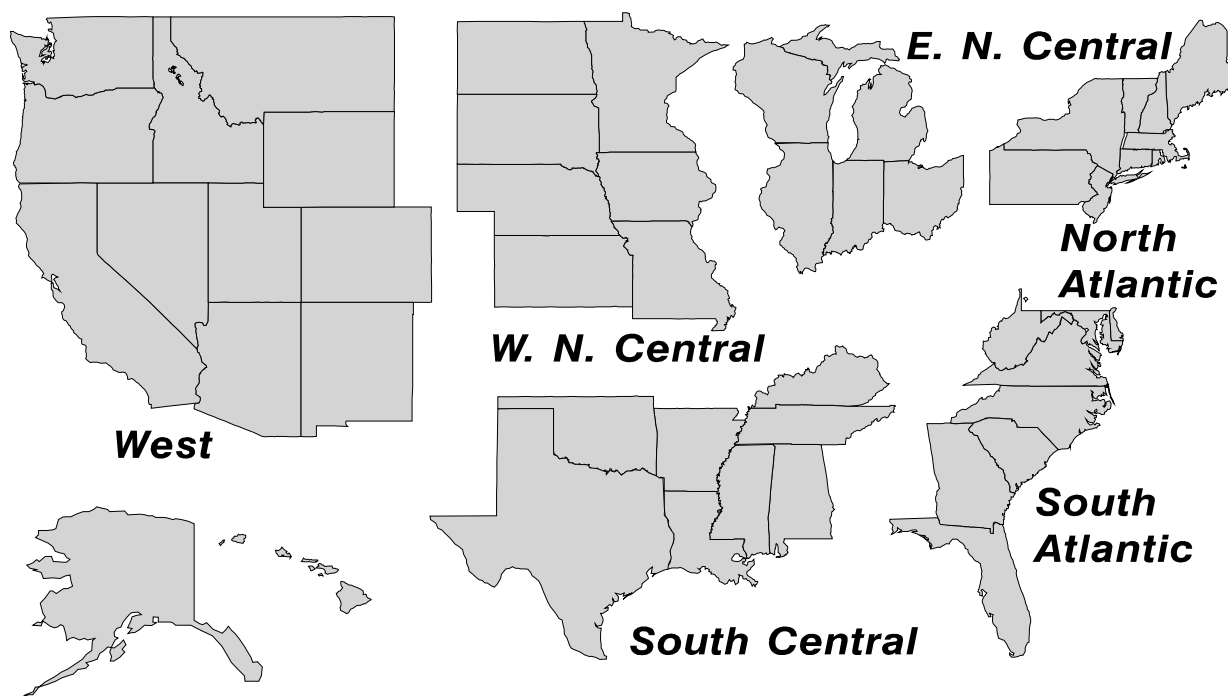
## Total Cheese Production United States

Million Pounds



## U. S. Geographic Regions Dairy Products

State totals are not published when fewer than 3 firms have reported or one firm comprises more than 60 percent of the State total. If we are not able to publish a region for confidentiality reasons, it will be combined with other regions when possible. For example, if North Atlantic can not be published, then it will be combined with South Atlantic to publish Atlantic. The West North Central and East North Central will be combined, if necessary, to form North Central. In the event that neither could be published, they may be combined with South Central to publish Central. Some tables will have only limited regions shown, therefore the regions may not add to the United States total.



## Contents

## Page

Dairy Products: Production by Product, United States, January, 2004-2005 .....	1
Whey and Modified Whey Products: Production, Stocks, and Prices, United States, January, 2004-2005 .....	2
Dairy Products: Production by Product and Month, United States, 2004-2005 .....	3
Select Commodities by State and United States, January, 2004-2005 .....	10
Canned Milk and Dry Milk Products: Manufacturer's Shipments, Stocks, and Selling Prices, January, 2004-2005 .....	15
Procedures and Reliability .....	16

**Dairy Products: Production by Product,  
United States, January, 2004-2005**

Product	Jan 2004	Dec 2004 <sup>1</sup>	Jan 2005	Change From	
				Jan 2004	Dec 2004
	<i>1,000 Pounds</i>	<i>1,000 Pounds</i>	<i>1,000 Pounds</i>	<i>Percent</i>	<i>Percent</i>
Butter	131,859	114,613	125,827	-4.6	9.8
Cheese					
American Types <sup>2</sup>	321,380	323,415	321,552	0.1	-0.6
Cheddar	244,808	236,551	237,354	-3.0	0.3
Swiss	22,997	24,444	23,404	1.8	-4.3
Brick and Muenster	6,812	6,990	5,648	-17.1	-19.2
Cream and Neufchatel	48,209	55,972	48,738	1.1	-12.9
Hispanic	10,333	11,662	12,705	23.0	8.9
Mozzarella	244,677	257,766	250,545	2.4	-2.8
Other Italian Types	62,369	63,612	66,457	6.6	4.5
Total Italian Types	307,046	321,378	317,002	3.2	-1.4
All Other Types	19,074	28,386	24,830	30.2	-12.5
Total	735,851	772,247	753,879	2.4	-2.4
Cottage Cheese, Curd <sup>3</sup>	38,294	34,271	35,602	-7.0	3.9
Cottage Cheese, Cream <sup>4</sup>	31,897	29,385	29,469	-7.6	0.3
Cottage Cheese, Lowfat <sup>5</sup>	31,839	28,835	29,562	-7.2	2.5
Canned Evaporated and Condensed Whole Milk	37,749	47,647	41,896	11.0	-12.1
Dry Whole Milk	4,238	2,445	4,114	-2.9	68.3
Nonfat Dry Milk, Human	120,490	93,201	93,775	-22.2	0.6
Dry Skim Milk, Animal	442	352	383	-13.3	8.8
Dry Buttermilk	5,918	6,150	6,872	16.1	11.7
Sour Cream	76,004	91,511	78,820	3.7	-13.9
Yogurt, Plain & Flavored	214,984	206,142	223,607	4.0	8.5
	<i>1,000 Gallons</i>	<i>1,000 Gallons</i>	<i>1,000 Gallons</i>	<i>Percent</i>	<i>Percent</i>
Frozen Products					
Ice Cream, Hard	59,132	55,182	60,394	2.1	9.4
Ice Cream, Lowfat, Hard	7,487	8,270	7,686	2.7	-7.1
Ice Cream, Lowfat, Soft	18,460	18,718	19,089	3.4	2.0
Ice Cream, Lowfat, Total	25,947	26,988	26,775	3.2	-0.8
Ice Cream, Nonfat, Hard	1,430	1,298	1,192	-16.6	-8.2
Sherbet, Hard	3,766	2,875	4,194	11.4	45.9
Water and Juice Ices	4,675	3,106	5,156	10.3	66.0
Frozen Yogurt, Total	4,403	4,145	4,357	-1.0	5.1
Regular & Lowfat, Hard	1,518	1,144	1,338	-11.9	17.0
Nonfat, Hard	813	771	623	-23.4	-19.2
Other Frozen Dairy Products	594	547	776	30.6	41.9
Mix for Frozen Products					
Ice Cream Mix	34,788	30,795	34,225	-1.6	11.1
Ice Cream, Lowfat, Mix	14,370	14,928	14,830	3.2	-0.7
Ice Cream, Nonfat, Mix	930	790	870	-6.5	10.1
Sherbet Mix	2,599	1,986	2,706	4.1	36.3
Yogurt Mix	2,590	2,438	2,563	-1.0	5.1

<sup>1</sup> Revised.

<sup>2</sup> Includes Cheddar, Colby, Monterey, and Jack.

<sup>3</sup> Mostly used for processing into cream or lowfat cottage cheese.

<sup>4</sup> Fat content 4 percent or more.

<sup>5</sup> Fat content less than 4 percent.

**Whey and Modified Whey Products: Production, Stocks,  
and Prices, United States, January, 2004-2005**

Product	Jan 2004	Dec 2004 <sup>1</sup>	Jan 2005	Change From	
				Jan 2004	Dec 2004
<b>Production</b>					
	<i>1,000 Pounds</i>	<i>1,000 Pounds</i>	<i>1,000 Pounds</i>	<i>Percent</i>	<i>Percent</i>
Condensed Whey, Solids Content <sup>2</sup>					
Sweet-Type, Human	8,584	6,973	6,319	-26.4	-9.4
Dry Whey Products					
Dry Whey, Human	79,780	80,164	79,934	0.2	-0.3
Dry Whey, Animal	7,293	7,496	6,286	-13.8	-16.1
Dry Whey, Total	87,073	87,660	86,220	-1.0	-1.6
Reduced Lactose and Minerals					
Human Food	3,356	3,190	4,324	28.8	35.5
Animal Feed	3,627	4,256	4,012	10.6	-5.7
Lactose, Human and Animal	56,164	59,352	55,854	-0.6	-5.9
Whey					
Protein Concentrate, Human <sup>3</sup>	27,302	27,322	24,385	-10.7	-10.7
Protein Concentrate, Animal <sup>3</sup>	3,335	5,202	4,475	34.2	-14.0
<b>Manufacturers' Stocks End-of-Month <sup>4</sup></b>					
	<i>1,000 Pounds</i>	<i>1,000 Pounds</i>	<i>1,000 Pounds</i>	<i>Percent</i>	<i>Percent</i>
Dry Whey Products					
Dry Whey, Human	41,418	39,926	37,141	-10.3	-7.0
Dry Whey, Animal	6,869	4,873	3,627	-47.2	-25.6
Reduced Lactose and Minerals					
Human and Animal <sup>5</sup>	6,942	5,181	4,751	-31.6	-8.3
Lactose, Human and Animal	49,862	74,557	73,296	47.0	-1.7
Whey Protein Concentrate, Human <sup>3</sup>	25,059	27,381	24,543	-2.1	-10.4
Whey Protein Concentrate, Animal <sup>3</sup>	3,238	2,982	2,652	-18.1	-11.1
<b>Manufacturers' Selling Price <sup>6</sup></b>					
	<i>Cents per Pound</i>	<i>Cents per Pound</i>	<i>Cents per Pound</i>	<i>Cents Change</i>	<i>Cents Change</i>
Dry Whey, Animal	17.4	21.9	22.5	5.1	0.6

<sup>1</sup> Revised.

<sup>2</sup> Final marketable product only. Does not include quantity used or shipped to another plant for further processing into dry whey or modified whey products. Does not include sweet-type, animal whey.

<sup>3</sup> Whey Protein Concentrate, 25.0 to 89.9 percent.

<sup>4</sup> Stocks held by manufacturers at all points and in transit.

<sup>5</sup> Reduced lactose and minerals stocks combined to avoid disclosure of individual operations.

<sup>6</sup> Prices for bulk goods, f.o.b. plant. Average monthly prices reported by firms.

**Dairy Products: Production by Product and Month,  
United States, 2004-2005 <sup>1</sup>**

Product and Month	By Month			Cumulative		
	2004	2005	Change From 2004	2004	2005	Change From 2004
	<i>1,000 Pounds</i>	<i>1,000 Pounds</i>	<i>Percent</i>	<i>1,000 Pounds</i>	<i>1,000 Pounds</i>	<i>Percent</i>
<b>Total Cheese</b>						
Jan	735,851	753,879	2.4	735,851	753,879	2.4
Feb	704,288			1,440,139		
Mar	779,599			2,219,738		
Apr	756,778			2,976,516		
May	748,351			3,724,867		
Jun	717,286			4,442,153		
Jul	707,884			5,150,037		
Aug	714,001			5,864,038		
Sep	716,075			6,580,113		
Oct	748,059			7,328,172		
Nov	748,171			8,076,343		
Dec	772,247			8,848,590		
<b>American Cheese</b>						
Jan	321,380	321,552	0.1	321,380	321,552	0.1
Feb	297,241			618,621		
Mar	324,194			942,815		
Apr	322,411			1,265,226		
May	331,908			1,597,134		
Jun	311,376			1,908,510		
Jul	302,784			2,211,294		
Aug	298,615			2,509,909		
Sep	295,228			2,805,137		
Oct	310,384			3,115,521		
Nov	301,443			3,416,964		
Dec	323,415			3,740,379		
<b>Cheddar Cheese</b>						
Jan	244,808	237,354	-3.0	244,808	237,354	-3.0
Feb	223,308			468,116		
Mar	241,804			709,920		
Apr	243,367			953,287		
May	251,316			1,204,603		
Jun	234,465			1,439,068		
Jul	218,284			1,657,352		
Aug	214,339			1,871,691		
Sep	213,917			2,085,608		
Oct	221,976			2,307,584		
Nov	221,034			2,528,618		
Dec	236,551			2,765,169		

See footnote(s) at end of table.

--continued

**Dairy Products: Production by Product and Month,  
United States, 2004-2005 <sup>1</sup> (continued)**

Product and Month	By Month			Cumulative		
	2004	2005	Change From 2004	2004	2005	Change From 2004
	<i>1,000 Pounds</i>	<i>1,000 Pounds</i>	<i>Percent</i>	<i>1,000 Pounds</i>	<i>1,000 Pounds</i>	<i>Percent</i>
Italian Cheese						
Jan	307,046	317,002	3.2	307,046	317,002	3.2
Feb	299,501			606,547		
Mar	333,416			939,963		
Apr	309,418			1,249,381		
May	302,462			1,551,843		
Jun	291,669			1,843,512		
Jul	288,533			2,132,045		
Aug	295,023			2,427,068		
Sep	289,042			2,716,110		
Oct	301,111			3,017,221		
Nov	313,576			3,330,797		
Dec	321,378			3,652,175		
Mozzarella						
Jan	244,677	250,545	2.4	244,677	250,545	2.4
Feb	240,013			484,690		
Mar	262,896			747,586		
Apr	249,677			997,263		
May	244,528			1,241,791		
Jun	234,903			1,476,694		
Jul	227,758			1,704,452		
Aug	230,943			1,935,395		
Sep	224,988			2,160,383		
Oct	236,004			2,396,387		
Nov	249,432			2,645,819		
Dec	257,766			2,903,585		
Other Italian						
Jan	62,369	66,457	6.6	62,369	66,457	6.6
Feb	59,488			121,857		
Mar	70,520			192,377		
Apr	59,741			252,118		
May	57,934			310,052		
Jun	56,766			366,818		
Jul	60,775			427,593		
Aug	64,080			491,673		
Sep	64,054			555,727		
Oct	65,107			620,834		
Nov	64,144			684,978		
Dec	63,612			748,590		

See footnote(s) at end of table.

--continued

**Dairy Products: Production by Product and Month,  
United States, 2004-2005 <sup>1</sup> (continued)**

Product and Month	By Month			Cumulative		
	2004	2005	Change From 2004	2004	2005	Change From 2004
	<i>1,000 Pounds</i>	<i>1,000 Pounds</i>	<i>Percent</i>	<i>1,000 Pounds</i>	<i>1,000 Pounds</i>	<i>Percent</i>
Butter						
Jan	131,859	125,827	-4.6	131,859	125,827	-4.6
Feb	105,788			237,647		
Mar	96,741			334,388		
Apr	96,521			430,909		
May	106,597			537,506		
Jun	96,975			634,481		
Jul	91,229			725,710		
Aug	88,618			814,328		
Sep	92,128			906,456		
Oct	101,549			1,008,005		
Nov	97,489			1,105,494		
Dec	114,613			1,220,107		
Nonfat Dry Milk, Human						
Jan	120,490	93,775	-22.2	120,490	93,775	-22.2
Feb	115,772			236,262		
Mar	118,018			354,280		
Apr	134,057			488,337		
May	151,108			639,445		
Jun	143,830			783,275		
Jul	134,036			917,311		
Aug	113,754			1,031,065		
Sep	93,936			1,125,001		
Oct	94,769			1,219,770		
Nov	83,788			1,303,558		
Dec	93,201			1,396,759		
Total Dry Whey <sup>2</sup>						
Jan	87,073	86,220	-1.0	87,073	86,220	-1.0
Feb	83,904			170,977		
Mar	93,745			264,722		
Apr	91,978			356,700		
May	90,491			447,191		
Jun	86,879			534,070		
Jul	83,851			617,921		
Aug	86,919			704,840		
Sep	80,057			784,897		
Oct	80,577			865,474		
Nov	83,645			949,119		
Dec	87,660			1,036,779		

See footnote(s) at end of table.

--continued



**Dairy Products: Production by Product and Month,  
United States, 2004-2005 <sup>1</sup> (continued)**

Product and Month	By Month			Cumulative		
	2004	2005	Change From 2004	2004	2005	Change From 2004
	<i>1,000 Pounds</i>	<i>1,000 Pounds</i>	<i>Percent</i>	<i>1,000 Pounds</i>	<i>1,000 Pounds</i>	<i>Percent</i>
Cream Cottage Cheese						
Jan	31,897	29,469	-7.6	31,897	29,469	-7.6
Feb	30,642			62,539		
Mar	34,940			97,479		
Apr	31,360			128,839		
May	30,688			159,527		
Jun	31,682			191,209		
Jul	32,708			223,917		
Aug	33,308			257,225		
Sep	32,348			289,573		
Oct	31,406			320,979		
Nov	29,439			350,418		
Dec	29,385			379,803		
Lowfat Cottage Cheese						
Jan	31,839	29,562	-7.2	31,839	29,562	-7.2
Feb	30,591			62,430		
Mar	35,649			98,079		
Apr	32,172			130,251		
May	34,300			164,551		
Jun	34,139			198,690		
Jul	32,558			231,248		
Aug	33,948			265,196		
Sep	33,765			298,961		
Oct	31,472			330,433		
Nov	28,806			359,239		
Dec	28,835			388,074		
	<i>1,000 Gallons</i>	<i>1,000 Gallons</i>	<i>Percent</i>	<i>1,000 Gallons</i>	<i>1,000 Gallons</i>	<i>Percent</i>
Ice Cream, Hard						
Jan	59,132	60,394	2.1	59,132	60,394	2.1
Feb	65,823			124,955		
Mar	78,711			203,666		
Apr	77,391			281,057		
May	75,073			356,130		
Jun	85,760			441,890		
Jul	78,759			520,649		
Aug	73,422			594,071		
Sep	70,675			664,746		
Oct	68,468			733,214		
Nov	59,175			792,389		
Dec	55,182			847,571		

See footnote(s) at end of table.

--continued

**Dairy Products: Production by Product and Month,  
United States, 2004-2005 <sup>1</sup> (continued)**

Product and Month	By Month			Cumulative		
	2004	2005	Change From 2004	2004	2005	Change From 2004
	<i>1,000 Gallons</i>	<i>1,000 Gallons</i>	<i>Percent</i>	<i>1,000 Gallons</i>	<i>1,000 Gallons</i>	<i>Percent</i>
<b>Ice Cream, Lowfat</b>						
Jan	25,947	26,775	3.2	25,947	26,775	3.2
Feb	26,832			52,779		
Mar	36,689			89,468		
Apr	38,960			128,428		
May	38,859			167,287		
Jun	43,613			210,900		
Jul	42,117			253,017		
Aug	38,783			291,800		
Sep	33,621			325,421		
Oct	30,233			355,654		
Nov	26,655			382,309		
Dec	26,988			409,297		
<b>Ice Cream, NF, Hard</b>						
Jan	1,430	1,192	-16.6	1,430	1,192	-16.6
Feb	1,482			2,912		
Mar	1,693			4,605		
Apr	1,972			6,577		
May	1,795			8,372		
Jun	1,928			10,300		
Jul	1,792			12,092		
Aug	1,645			13,737		
Sep	1,505			15,242		
Oct	1,655			16,897		
Nov	1,115			18,012		
Dec	1,298			19,310		
<b>Sherbet, Hard</b>						
Jan	3,766	4,194	11.4	3,766	4,194	11.4
Feb	3,973			7,739		
Mar	5,609			13,348		
Apr	5,171			18,519		
May	4,944			23,463		
Jun	5,805			29,268		
Jul	4,693			33,961		
Aug	4,632			38,593		
Sep	4,235			42,828		
Oct	3,582			46,410		
Nov	3,429			49,839		
Dec	2,875			52,714		

See footnote(s) at end of table.

--continued

**Dairy Products: Production by Product and Month,  
United States, 2004-2005 (continued)**

Product and Month	By Month			Cumulative		
	2004	2005	Change From 2004	2004	2005	Change From 2004
	<i>1,000 Gallons</i>	<i>1,000 Gallons</i>	<i>Percent</i>	<i>1,000 Gallons</i>	<i>1,000 Gallons</i>	<i>Percent</i>
Sour Cream						
Jan	76,004	78,820	3.7	76,004	78,820	3.7
Feb	72,813			72,813		
Mar	84,322			84,322		
Apr	76,004			76,004		
May	76,013			76,013		
Jun	80,348			80,348		
Jul	75,003			75,003		
Aug	82,175			82,175		
Sep	77,055			77,055		
Oct	84,679			84,679		
Nov	99,206			99,206		
Dec	91,511			91,511		

See footnote(s) at end of table.

--continued

**Dairy Products: Production by Product and Month,  
United States, 2004-2005 (continued)**

Product and Month	By Month			Cumulative		
	2004	2005	Change From 2004	2004	2005	Change From 2004
	<i>1,000 Gallons</i>	<i>1,000 Gallons</i>	<i>Percent</i>	<i>1,000 Gallons</i>	<i>1,000 Gallons</i>	<i>Percent</i>
Yogurt						
Jan	214,984	223,607	4.0	214,984	223,607	4.0
Feb	209,761			209,761		
Mar	232,509			232,509		
Apr	214,804			214,804		
May	220,733			220,733		
Jun	228,504			228,504		
Jul	207,168			207,168		
Aug	227,608			227,608		
Sep	237,145			237,145		
Oct	209,084			209,084		
Nov	189,753			189,753		
Dec	206,142			206,142		

See footnote(s) at end of table.

--continued

**Dairy Products: Production by Product and Month,  
United States, 2004-2005 <sup>1</sup> (continued)**

Product and Month	By Month			Cumulative		
	2004	2005	Change From 2004	2004	2005	Change From 2004
	<i>1,000 Gallons</i>	<i>1,000 Gallons</i>	<i>Percent</i>	<i>1,000 Gallons</i>	<i>1,000 Gallons</i>	<i>Percent</i>
Frozen Yogurt						
Jan	4,403	4,357	-1.0	4,403	4,357	-1.0
Feb	4,973			9,376		
Mar	6,246			15,622		
Apr	6,016			21,638		
May	6,282			27,920		
Jun	6,419			34,339		
Jul	5,811			40,150		
Aug	6,023			46,173		
Sep	5,416			51,589		
Oct	4,813			56,402		
Nov	4,515			60,917		
Dec	4,145			65,062		

<sup>1</sup> December 2004 data revised.

<sup>2</sup> Excludes all modified dry whey products.

**Total Cheese, Excluding Cottage Cheese: Production by  
State and United States, January 2004-2005**

State	Jan 2004	Dec <sup>1</sup> 2004	Jan 2005	Change From	
				Jan 2004	Dec 2004
	<i>1,000 Pounds</i>	<i>1,000 Pounds</i>	<i>1,000 Pounds</i>	<i>Percent</i>	<i>Percent</i>
CA	167,708	184,485	179,708	7.2	-2.6
IL	7,060	7,748	7,612	7.8	-1.8
IA	13,145	14,010	13,323	1.4	-4.9
MA	61	97	69	13.1	-28.9
MN	52,694	52,975	51,998	-1.3	-1.8
MO	6,225	6,597	5,718	-8.1	-13.3
NY	58,162	58,699	52,555	-9.6	-10.5
OH	15,706	16,041	16,360	4.2	2.0
PA	30,795	32,340	31,077	0.9	-3.9
SD	11,191	14,781	14,187	26.8	-4.0
UT	4,641	6,017	4,443	-4.3	-26.2
WI	192,457	197,107	195,573	1.6	-0.8
Oth Sts <sup>2</sup>	176,006	181,350	181,256	3.0	-0.1
US	735,851	772,247	753,879	2.4	-2.4
N Atlantic	104,740	106,119	100,131	-4.4	-5.6
S Atlantic	3,643	2,479	3,583	-1.6	44.5
E N Central	227,232	235,010	233,750	2.9	-0.5
W N Central	87,085	92,060	89,054	2.3	-3.3
S Central	7,448	7,291	7,302	-2.0	0.2
West	305,703	329,288	320,059	4.7	-2.8

<sup>1</sup> Revised.

<sup>2</sup> States not shown when fewer than 3 plants reported or individual plant operations could be disclosed. Percent change shown only when comparable States are included in the calculation.

**American Cheese: Production by State and United States, January 2004-2005**

State	Jan 2004	Dec <sup>1</sup> 2004	Jan 2005	Change From	
				Jan 2004	Dec 2004
	<i>1,000 Pounds</i>	<i>1,000 Pounds</i>	<i>1,000 Pounds</i>	<i>Percent</i>	<i>Percent</i>
CA	70,654	73,938	72,968	3.3	-1.3
ID	43,227	47,608	48,605	12.4	2.1
IA	10,427	11,108	10,530	1.0	-5.2
MN	50,561	50,387	48,682	-3.7	-3.4
NY	8,377	5,693	5,876	-29.9	3.2
OH	3,051	2,522	2,963	-2.9	17.5
OR	8,320	9,621	9,722	16.9	1.0
SD	7,028	7,209	6,665	-5.2	-7.5
WI	73,200	73,700	74,800	2.2	1.5
Oth Sts <sup>2</sup>	46,535	41,629	40,741	-12.5	-2.1
US	321,380	323,415	321,552	0.1	-0.6
Atlantic	14,583	11,151	12,220	-16.2	9.6
E N Central	77,454	77,177	78,874	1.8	2.2
W N Central	68,452	69,174	66,249	-3.2	-4.2
S Central	4,319	4,826	4,204	-2.7	-12.9
West	156,572	161,087	160,005	2.2	-0.7

<sup>1</sup> Revised.

<sup>2</sup> States not shown when fewer than 3 plants reported or individual plant operations could be disclosed. Percent change shown only when comparable States are included in the calculation.

**Cheddar Cheese: Production by State and United States, January 2004-2005**

State	Jan 2004	Dec <sup>1</sup> 2004	Jan 2005	Change From	
				Jan 2004	Dec 2004
	<i>1,000 Pounds</i>	<i>1,000 Pounds</i>	<i>1,000 Pounds</i>	<i>Percent</i>	<i>Percent</i>
CA	47,149	46,838	47,382	0.5	1.2
ID	22,488	20,191	21,600	-3.9	7.0
MN	45,332	46,281	44,405	-2.0	-4.1
NY	8,286	5,573	5,799	-30.0	4.1
SD	4,957	4,765	4,622	-6.8	-3.0
WI	59,000	58,400	59,400	0.7	1.7
Oth Sts <sup>2</sup>	57,596	54,503	54,146	-6.0	-0.7
US	244,808	236,551	237,354	-3.0	0.3
Atlantic	13,976	10,332	11,783	-15.7	14.0
E N Cen	61,223	60,322	61,599	0.6	2.1
W N Cen	57,603	58,959	56,563	-1.8	-4.1
S Cen	4,318	4,825	4,203	-2.7	-12.9
West	107,688	102,113	103,206	-4.2	1.1

<sup>1</sup> Revised.

<sup>2</sup> States not shown when fewer than 3 plants reported or individual plant operations could be disclosed. Percent change shown only when comparable States are included in the calculation.

**Mozzarella Cheese: Production by State and United States, January 2004-2005**

State	Jan 2004	Dec <sup>1</sup> 2004	Jan 2005	Change From	
				Jan 2004	Dec 2004
	<i>1,000 Pounds</i>	<i>1,000 Pounds</i>	<i>1,000 Pounds</i>	<i>Percent</i>	<i>Percent</i>
CA	75,671	81,486	78,150	3.3	-4.1
NY	17,059	15,118	14,469	-15.2	-4.3
PA	18,286	18,113	18,984	3.8	4.8
WI	64,500	66,300	63,300	-1.9	-4.5
Oth Sts <sup>2</sup>	69,161	76,749	75,642	9.4	-1.4
US	244,677	257,766	250,545	2.4	-2.8
Atlantic <sup>3</sup>	43,259	40,284	41,848	-3.3	3.9
E N Central	75,711	79,495	76,700	1.3	-3.5
West	119,590	129,147	122,895	2.8	-4.8

<sup>1</sup> Revised.

<sup>2</sup> States not shown when fewer than 3 plants reported or individual plant operations could be disclosed. Percent change shown only when comparable States are included in the calculation.

<sup>3</sup> Region totals may not add to U.S. when compiled regions could not be disclosed.

**Butter: Production by State and United States, January 2004-2005**

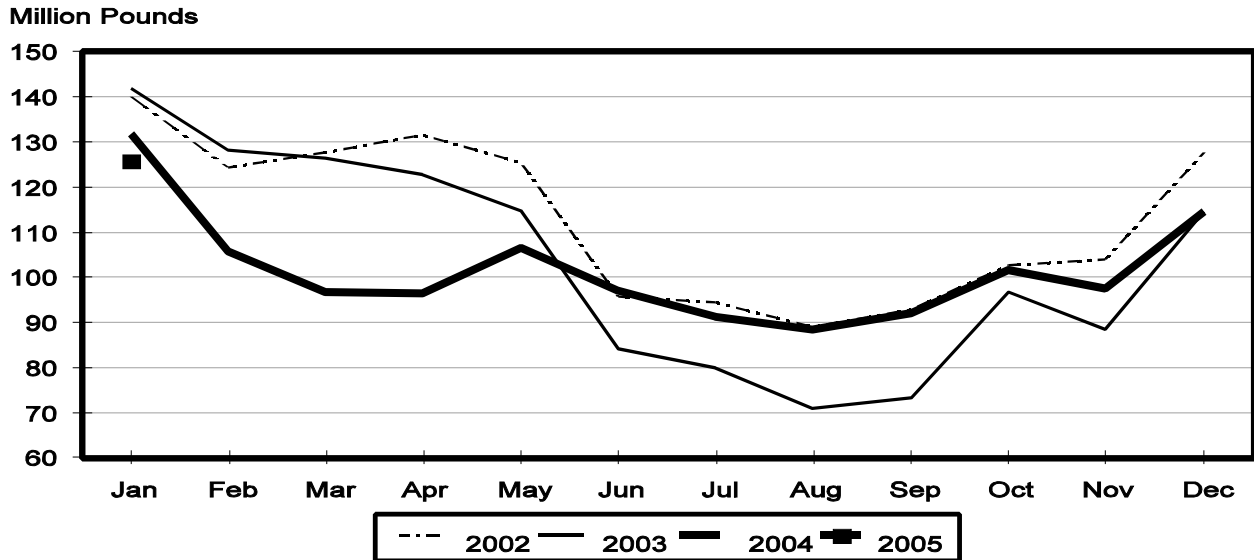
State	Jan 2004	Dec <sup>1</sup> 2004	Jan 2005	Change From	
				Jan 2004	Dec 2004
	<i>1,000 Pounds</i>	<i>1,000 Pounds</i>	<i>1,000 Pounds</i>	<i>Percent</i>	<i>Percent</i>
CA	38,113	36,159	34,045	-10.7	-5.8
NY	2,445	1,695	1,763	-27.9	4.0
PA	6,595	5,077	6,509	-1.3	28.2
WI	34,372	33,826	38,900	13.2	15.0
Oth Sts <sup>2</sup>	50,334	37,856	44,610	-11.4	17.8
US	131,859	114,613	125,827	-4.6	9.8
N Atlantic <sup>3</sup>	13,350	6,895	12,797	-4.1	85.6
E N Central	37,259	36,405	41,356	11.0	13.6
W N Central	12,699	6,490	4,552	-64.2	-29.9
West	54,531	50,829	51,088	-6.3	0.5

<sup>1</sup> Revised.

<sup>2</sup> States not shown when fewer than 3 plants reported or individual plant operations could be disclosed. Percent change shown only when comparable States are included in the calculation.

<sup>3</sup> Region totals may not add to U.S. when compiled regions could not be disclosed.

## Total Butter Production United States





**Nonfat Dry Milk, Human: Production by State  
and United States, January 2004-2005**

State	Jan 2004	Dec <sup>1</sup> 2004	Jan 2005	Change From	
				Jan 2004	Dec 2004
	<i>1,000 Pounds</i>	<i>1,000 Pounds</i>	<i>1,000 Pounds</i>	<i>Percent</i>	<i>Percent</i>
CA	62,058	38,527	39,365	-36.6	2.2
Oth Sts <sup>2</sup>	54,274	54,674	54,410	0.3	-0.5
US	120,490	93,201	93,775	-22.2	0.6
Atlantic	13,424	14,133	13,885	3.4	-1.8
E N Central	2,234	3,309	3,106	39.0	-6.1
W N Central	6,094	4,918	5,232	-14.1	6.4
S Central	4,418	4,824	6,259	41.7	29.7
West	94,320	66,017	65,293	-30.8	-1.1

<sup>1</sup> Revised.

<sup>2</sup> States not shown when fewer than 3 plants reported or individual plant operations could be disclosed. Percent change shown only when comparable States are included in the calculation.

**Dry Whey, Human: Production by State  
and United States, January 2004-2005**

State	Jan 2004	Dec <sup>1</sup> 2004	Jan 2005	Change From	
				Jan 2004	Dec 2004
	<i>1,000 Pounds</i>	<i>1,000 Pounds</i>	<i>1,000 Pounds</i>	<i>Percent</i>	<i>Percent</i>
CA	9,910	10,202	8,671	-12.5	-15.0
MN	4,293	4,459	4,036	-6.0	-9.5
NY	9,943	9,955	10,349	4.1	4.0
PA	8,180	8,460	9,046	10.6	6.9
UT		2,017	1,696		-15.9
WI	25,724	23,773	24,300	-5.5	2.2
Oth Sts <sup>2</sup>	21,730	21,298	21,836	0.5	2.5
US	79,780	80,164	79,934	0.2	-0.3
Atlantic	18,123	18,415	19,395	7.0	5.3
Central	38,716	37,246	38,065	-1.7	2.2
West	22,941	24,503	22,474	-2.0	-8.3

<sup>1</sup> Revised.

<sup>2</sup> States not shown when fewer than 3 plants reported or individual plant operations could be disclosed. Percent change shown only when comparable States are included in the calculation.

**Ice Cream, Hard: Production by State and United States, January 2004-2005**

State	Jan 2004	Dec <sup>1</sup> 2004	Jan 2005	Change From	
				Jan 2004	Dec 2004
	<i>1,000 Gallons</i>	<i>1,000 Gallons</i>	<i>1,000 Gallons</i>	<i>Percent</i>	<i>Percent</i>
CA	6,232	6,094	5,978	-4.1	-1.9
FL	2,100	1,800	1,700	-19.0	-5.6
IL	2,777	2,589	2,210	-20.4	-14.6
IN	5,776	6,724	5,396	-6.6	-19.8
MD	1,446	936	1,446		54.5
MA	4,465	4,053	4,855	8.7	19.8
MI	1,451	1,192	1,327	-8.5	11.3
MN	2,657	3,117	2,761	3.9	-11.4
MO	1,697	1,329	2,109	24.3	58.7
NY	2,000	1,445	2,136	6.8	47.8
NC	1,368	966	1,025	-25.1	6.1
OH	1,693	1,634	1,622	-4.2	-0.7
OR	790	880	769	-2.7	-12.6
PA	2,952	2,577	2,807	-4.9	8.9
TN	1,056	1,119	1,468	39.0	31.2
TX	3,685	2,999	3,365	-8.7	12.2
UT	1,321	1,609	1,763	33.5	9.6
Oth Sts <sup>2</sup>	15,666	14,119	17,657	12.7	25.1
US	59,132	55,182	60,394	2.1	9.4
N Atlantic	12,004	10,157	12,869	7.2	26.7
S Atlantic	6,079	4,643	5,121	-15.8	10.3
E N Central	12,403	12,601	11,218	-9.6	-11.0
W N Central	9,261	10,052	11,091	19.8	10.3
S Central	7,693	7,179	8,447	9.8	17.7
West	11,692	10,550	11,648	-0.4	10.4

<sup>1</sup> Revised.

<sup>2</sup> States not shown when fewer than 3 plants reported or individual plant operations could be disclosed. Percent change shown only when comparable States are included in the calculation.

**Canned Milk and Dry Milk Products: Manufacturers' Shipments,  
and Stocks, January, 2004-2005**

Product	Jan 2004	Dec 2004 <sup>1</sup>	Jan 2005	Change From	
				Jan 2004	Dec 2004
	<b>Manufacturers' Shipments <sup>2</sup></b>				
	<i>1,000 Pounds</i>	<i>1,000 Pounds</i>	<i>1,000 Pounds</i>	<i>Percent</i>	<i>Percent</i>
Nonfat Dry Milk, Human	109,870	112,254	97,851	-10.9	-12.8
	<b>Manufacturers' Stocks End-of-Month <sup>3</sup></b>				
	<i>1,000 Pounds</i>	<i>1,000 Pounds</i>	<i>1,000 Pounds</i>	<i>Percent</i>	<i>Percent</i>
Canned Evaporated and Condensed Whole Milk	43,177	34,383	46,327	7.3	34.7
Nonfat Dry Milk, Human	108,753	98,878	90,800	-16.5	-8.2
Dry Buttermilk, Total	4,898	9,549	10,442	113.2	9.4

<sup>1</sup> Revised.

<sup>2</sup> For dry products, shipments of bulk goods only.

<sup>3</sup> Stocks held by manufacturers at all points and in transit.

**Procedures and Reliability:** Estimates included in this report are based on data provided each month by manufacturers of these products. In 32 States, the State Departments of Agriculture assist in collection of data, which eliminates duplicate reporting and reduces respondent burden. Data are collected by mail, personal and telephone interviews following the close of each month. There were 1,126 manufacturers that made one or more products in 2003. Each month, reports are generally received from all dairy plants in States with small numbers of plants. In States with large numbers of plants, survey procedures are designed to obtain monthly reports from all large plants and from a sample of small plants. Monthly estimates are based upon returns from about 70 percent of the plants which account for 70 to 90 percent of the total production of major dairy products.

**Revision Policy:** Monthly estimates are subject to revision the month following the preliminary estimates. Annual estimates are published in the "**Dairy Products**" report published each April which includes any revisions made to current and previous year. An attempt is made to get information from all plants for preparing these estimates

## ACCESS TO REPORTS!!

---

For your convenience, there are several ways to obtain NASS reports, data products, and services:

### INTERNET ACCESS

All NASS reports are available free of charge on the worldwide Internet. For access, connect to the Internet and go to the NASS Home Page at: [www.usda.gov/nass/](http://www.usda.gov/nass/). Select "Today's Reports" or Publications and then Reports Calendar or Publications and then Search, by Title or Subject.

### E-MAIL SUBSCRIPTION

All NASS reports are available by subscription free of charge direct to your e-mail address. Starting with the NASS Home Page at [www.usda.gov/nass/](http://www.usda.gov/nass/), click on **Publications**, then click on the **Subscribe by E-mail** button which takes you to the page describing e-mail delivery of reports. Finally, click on **Go to the Subscription Page** and follow the instructions.

-----

### PRINTED REPORTS OR DATA PRODUCTS

**CALL OUR TOLL-FREE ORDER DESK: 800-999-6779 (U.S. and Canada)**  
**Other areas, please call 703-605-6220      FAX: 703-605-6900**  
**(Visa, MasterCard, check, or money order acceptable for payment.)**

-----

### ASSISTANCE

For **assistance** with general agricultural statistics or further information about NASS or its products or services, contact the **Agricultural Statistics Hotline** at **800-727-9540**, 7:30 a.m. to 4:00 p.m. ET, or e-mail: [nass@nass.usda.gov](mailto:nass@nass.usda.gov).

---

The United States Department of Agriculture (USDA) prohibits discrimination in all its programs on the basis of race, color, national origin, gender, religion, age, disability, political beliefs, sexual orientation, and marital or family status. (Not all prohibited bases apply to all programs.) Persons with disabilities who require alternative means for communication of program information (braille, large print, audiotape, etc.) should contact the USDA's TARGET Center at 202-720-2600 (voice and TDD).

To file a complaint of discrimination, write USDA, Director, Office of Civil Rights, Room 326-W, Whitten Building, 1400 Independence Avenue, SW, Washington, D.C., 20250-9410, or call 202-720-5964 (voice or TDD). USDA is an equal opportunity provider and employer.