

Released April 4, 2005, by the National Agricultural Statistics Service (NASS), Agricultural Statistics Board, U.S. Department of Agriculture. For information on *Dairy Products* call Bill Weaver at (202) 720-3570, office hours 7:30 a.m. to 4:00 p.m. ET.

## February 2005 Highlights

**Total cheese** output (excluding cottage cheese) was 708 million pounds, 0.5 percent above February 2004 but 6.2 percent below January 2005.

**American type cheese** production totaled 292 million pounds, 1.6 percent below February 2004 and 9.2 percent below January 2005.

**Butter** production was 113 million pounds in February, 7.3 percent above February 2004 but 11.8 percent below January 2005.

**Frozen dessert:** (comparisons with February 2004)

Ice cream, Regular (hard) --- 64.1 million gallons, down 2.6 percent.

Ice cream, Lowfat (total) --- 28.0 million gallons, up 4.3 percent.

Ice cream, Nonfat (hard) --- 1.46 million gallons, down 1.8 percent.

Sherbet (hard) --- 4.08 million gallons, up 2.8 percent.

Frozen Yogurt (total) --- 4.52 million gallons, down 9.1 percent.

**Nonfat dry milk for human food:** (compared with February 2004) --- 94.3 million pounds, down 18.6 percent.

**Dry whey products:** (comparisons with February 2004)

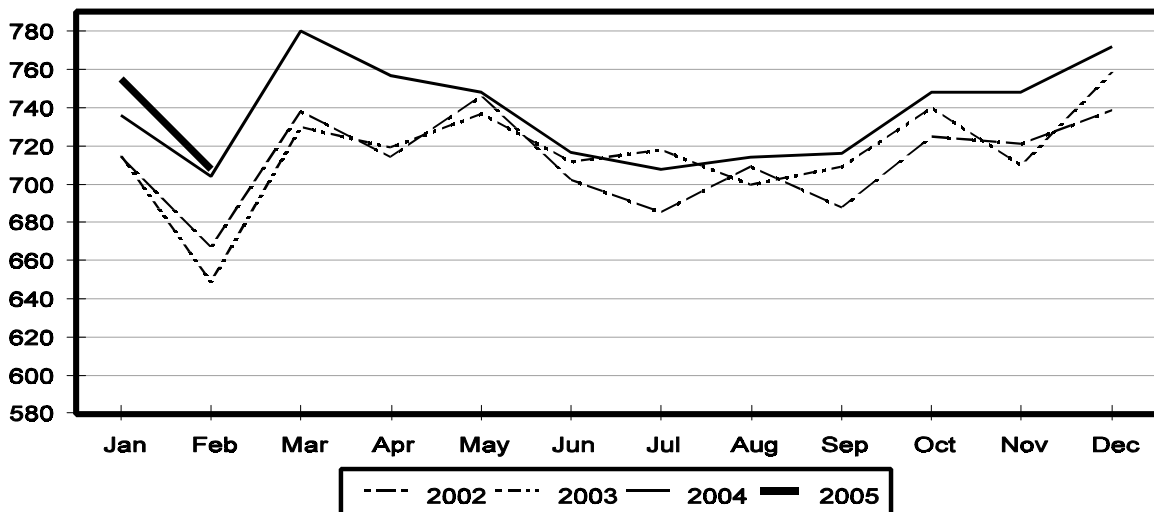
Dry whey, human --- 74.2 million pounds, down 3.1 percent.

Dry whey, animal --- 5.97 million pounds, down 18.0 percent.

Dry whey, total --- 80.2 million pounds, down 4.4 percent.

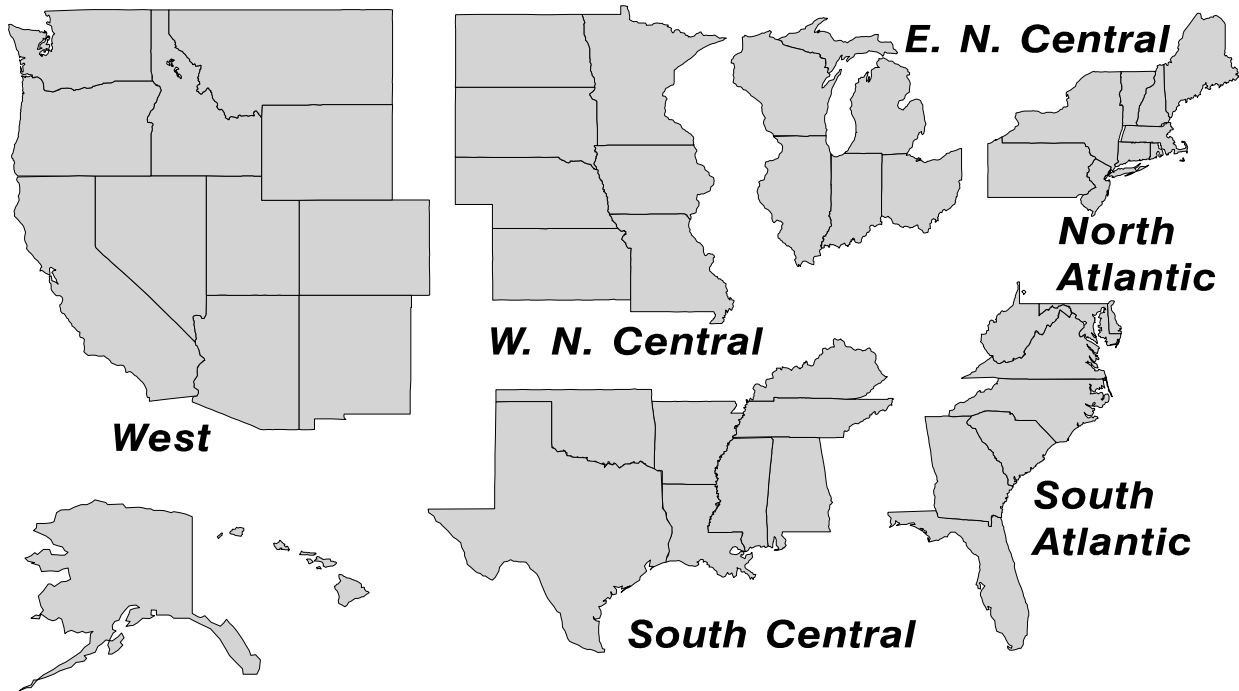
## Total Cheese Production United States

Million Pounds



## U. S. Geographic Regions Dairy Products

State totals are not published when fewer than 3 firms have reported or one firm comprises more than 60 percent of the State total. If we are not able to publish a region for confidentiality reasons, it will be combined with other regions when possible. For example, if North Atlantic can not be published, then it will be combined with South Atlantic to publish Atlantic. The West North Central and East North Central will be combined, if necessary, to form North Central. In the event that neither could be published, they may be combined with South Central to publish Central. Some tables will have only limited regions shown, therefore the regions may not add to the United States total.



## Contents

## Page

Dairy Products: Production by Product, United States, February, 2004-2005 .....	1
Whey and Modified Whey Products: Production, Stocks, and Prices, United States, February, 2004-2005 .....	2
Dairy Products: Production by Product and Month, United States, 2004-2005 .....	3
Select Commodities by State and United States, February, 2004-2005 .....	10
Canned Milk and Dry Milk Products: Manufacturer's Shipments, Stocks, and Selling Prices, February, 2004-2005 .....	15
Procedures and Reliability .....	16

**Dairy Products: Production by Product,  
United States, February, 2004-2005**

Product	Feb 2004	Jan 2005 <sup>1</sup>	Feb 2005	Change From	
				Feb 2004	Jan 2005
	<i>1,000 Pounds</i>	<i>1,000 Pounds</i>	<i>1,000 Pounds</i>	<i>Percent</i>	<i>Percent</i>
Butter	105,788	128,653	113,498	7.3	-11.8
Cheese					
American Types <sup>2</sup>	297,241	322,188	292,386	-1.6	-9.2
Cheddar	223,308	237,513	216,409	-3.1	-8.9
Swiss	21,586	23,293	21,881	1.4	-6.1
Brick and Muenster	5,460	5,648	5,240	-4.0	-7.2
Cream and Neufchatel	49,175	48,738	52,020	5.8	6.7
Hispanic	10,920	12,708	13,204	20.9	3.9
Mozzarella	240,013	251,399	240,127		-4.5
Other Italian Types	59,488	65,790	62,885	5.7	-4.4
Total Italian Types	299,501	317,189	303,012	1.2	-4.5
All Other Types	20,405	24,920	20,373	-0.2	-18.2
Total	704,288	754,684	708,116	0.5	-6.2
Cottage Cheese, Curd <sup>3</sup>	36,223	35,713	34,011	-6.1	-4.8
Cottage Cheese, Cream <sup>4</sup>	30,642	29,496	27,913	-8.9	-5.4
Cottage Cheese, Lowfat <sup>5</sup>	30,591	29,468	30,454	-0.4	3.3
Canned Evaporated and Condensed Whole Milk	38,382	41,896	33,363	-13.1	-20.4
Dry Whole Milk	3,973	4,114	2,820	-29.0	-31.5
Nonfat Dry Milk, Human	115,772	93,775	94,266	-18.6	0.5
Dry Skim Milk, Animal	325	383	405	24.6	5.7
Dry Buttermilk	5,288	6,872	5,446	3.0	-20.8
Sour Cream	72,813	76,883	73,297	0.7	-4.7
Yogurt, Plain & Flavored	209,761	223,206	237,710	13.3	6.5
	<i>1,000 Gallons</i>	<i>1,000 Gallons</i>	<i>1,000 Gallons</i>	<i>Percent</i>	<i>Percent</i>
Frozen Products					
Ice Cream, Hard	65,823	60,440	64,100	-2.6	6.1
Ice Cream, Lowfat, Hard	8,212	7,705	8,154	-0.7	5.8
Ice Cream, Lowfat, Soft	18,620	19,374	19,828	6.5	2.3
Ice Cream, Lowfat, Total	26,832	27,079	27,982	4.3	3.3
Ice Cream, Nonfat, Hard	1,482	1,164	1,456	-1.8	25.1
Sherbet, Hard	3,973	4,194	4,083	2.8	-2.6
Water and Juice Ices	4,876	5,162	4,418	-9.4	-14.4
Frozen Yogurt, Total	4,973	4,299	4,520	-9.1	5.1
Regular & Lowfat, Hard	1,612	1,328	1,398	-13.3	5.3
Nonfat, Hard	909	611	867	-4.6	41.9
Other Frozen Dairy Products	578	943	881	52.4	-6.6
Mix for Frozen Products					
Ice Cream Mix	37,903	34,919	34,704	-8.4	-0.6
Ice Cream, Lowfat, Mix	14,842	15,001	15,494	4.4	3.3
Ice Cream, Nonfat, Mix	1,123	859	1,065	-5.2	24.0
Sherbet Mix	3,019	2,662	2,777	-8.0	4.3
Yogurt Mix	2,925	2,529	2,659	-9.1	5.1

<sup>1</sup> Revised.

<sup>2</sup> Includes Cheddar, Colby, Monterey, and Jack.

<sup>3</sup> Mostly used for processing into cream or lowfat cottage cheese.

<sup>4</sup> Fat content 4 percent or more.

<sup>5</sup> Fat content less than 4 percent.

**Whey and Modified Whey Products: Production, Stocks,  
and Prices, United States, February, 2004-2005**

Product	Feb 2004	Jan 2005 <sup>1</sup>	Feb 2005	Change From	
				Feb 2004	Jan 2005
<b>Production</b>					
	<i>1,000 Pounds</i>	<i>1,000 Pounds</i>	<i>1,000 Pounds</i>	<i>Percent</i>	<i>Percent</i>
Condensed Whey, Solids Content <sup>2</sup>					
Sweet-Type, Human	8,187	6,319	5,297	-35.3	-16.2
Dry Whey Products					
Dry Whey, Human	76,634	79,813	74,231	-3.1	-7.0
Dry Whey, Animal	7,270	6,381	5,965	-18.0	-6.5
Dry Whey, Total	83,904	86,194	80,196	-4.4	-7.0
Reduced Lactose and Minerals					
Human Food	3,171	4,303	3,559	12.2	-17.3
Animal Feed	3,710	4,053	3,810	2.7	-6.0
Lactose, Human and Animal	51,301	56,092	52,719	2.8	-6.0
Whey					
Protein Concentrate, Human <sup>3</sup>	23,663	24,523	23,301	-1.5	-5.0
Protein Concentrate, Animal <sup>3</sup>	3,493	4,415	3,961	13.4	-10.3
<b>Manufacturers' Stocks End-of-Month <sup>4</sup></b>					
	<i>1,000 Pounds</i>	<i>1,000 Pounds</i>	<i>1,000 Pounds</i>	<i>Percent</i>	<i>Percent</i>
Dry Whey Products					
Dry Whey, Human	32,652	37,939	36,368	11.4	-4.1
Dry Whey, Animal	5,803	3,693	3,846	-33.7	4.1
Reduced Lactose and Minerals					
Human and Animal <sup>5</sup>	7,041	4,815	4,917	-30.2	2.1
Lactose, Human and Animal	47,247	73,657	65,590	38.8	-11.0
Whey Protein Concentrate, Human <sup>3</sup>	23,142	24,626	21,930	-5.2	-10.9
Whey Protein Concentrate, Animal <sup>3</sup>	3,607	2,513	1,709	-52.6	-32.0
<b>Manufacturers' Selling Price <sup>6</sup></b>					
	<i>Cents per Pound</i>	<i>Cents per Pound</i>	<i>Cents per Pound</i>	<i>Cents Change</i>	<i>Cents Change</i>
Dry Whey, Animal	15.9	22.5	22.5	6.6	

<sup>1</sup> Revised.

<sup>2</sup> Final marketable product only. Does not include quantity used or shipped to another plant for further processing into dry whey or modified whey products. Does not include sweet-type, animal whey.

<sup>3</sup> Whey Protein Concentrate, 25.0 to 89.9 percent.

<sup>4</sup> Stocks held by manufacturers at all points and in transit.

<sup>5</sup> Reduced lactose and minerals stocks combined to avoid disclosure of individual operations.

<sup>6</sup> Prices for bulk goods, f.o.b. plant. Average monthly prices reported by firms.

**Dairy Products: Production by Product and Month,  
United States, 2004-2005 <sup>1</sup>**

Product and Month	By Month			Cumulative		
	2004	2005	Change From 2004	2004	2005	Change From 2004
	<i>1,000 Pounds</i>	<i>1,000 Pounds</i>	<i>Percent</i>	<i>1,000 Pounds</i>	<i>1,000 Pounds</i>	<i>Percent</i>
<b>Total Cheese</b>						
Jan	735,851	754,684	2.6	735,851	754,684	2.6
Feb	704,288	708,116	0.5	1,440,139	1,462,800	1.6
Mar	779,599			2,219,738		
Apr	756,778			2,976,516		
May	748,351			3,724,867		
Jun	717,286			4,442,153		
Jul	707,884			5,150,037		
Aug	714,001			5,864,038		
Sep	716,075			6,580,113		
Oct	748,059			7,328,172		
Nov	748,171			8,076,343		
Dec	772,247			8,848,590		
<b>American Cheese</b>						
Jan	321,380	322,188	0.3	321,380	322,188	0.3
Feb	297,241	292,386	-1.6	618,621	614,574	-0.7
Mar	324,194			942,815		
Apr	322,411			1,265,226		
May	331,908			1,597,134		
Jun	311,376			1,908,510		
Jul	302,784			2,211,294		
Aug	298,615			2,509,909		
Sep	295,228			2,805,137		
Oct	310,384			3,115,521		
Nov	301,443			3,416,964		
Dec	323,415			3,740,379		
<b>Cheddar Cheese</b>						
Jan	244,808	237,513	-3.0	244,808	237,513	-3.0
Feb	223,308	216,409	-3.1	468,116	453,922	-3.0
Mar	241,804			709,920		
Apr	243,367			953,287		
May	251,316			1,204,603		
Jun	234,465			1,439,068		
Jul	218,284			1,657,352		
Aug	214,339			1,871,691		
Sep	213,917			2,085,608		
Oct	221,976			2,307,584		
Nov	221,034			2,528,618		
Dec	236,551			2,765,169		

See footnote(s) at end of table.

--continued

**Dairy Products: Production by Product and Month,  
United States, 2004-2005<sup>1</sup> (continued)**

Product and Month	By Month			Cumulative		
	2004	2005	Change From 2004	2004	2005	Change From 2004
	<i>1,000 Pounds</i>	<i>1,000 Pounds</i>	<i>Percent</i>	<i>1,000 Pounds</i>	<i>1,000 Pounds</i>	<i>Percent</i>
Italian Cheese						
Jan	307,046	317,189	3.3	307,046	317,189	3.3
Feb	299,501	303,012	1.2	606,547	620,201	2.3
Mar	333,416			939,963		
Apr	309,418			1,249,381		
May	302,462			1,551,843		
Jun	291,669			1,843,512		
Jul	288,533			2,132,045		
Aug	295,023			2,427,068		
Sep	289,042			2,716,110		
Oct	301,111			3,017,221		
Nov	313,576			3,330,797		
Dec	321,378			3,652,175		
Mozzarella						
Jan	244,677	251,399	2.7	244,677	251,399	2.7
Feb	240,013	240,127		484,690	491,526	1.4
Mar	262,896			747,586		
Apr	249,677			997,263		
May	244,528			1,241,791		
Jun	234,903			1,476,694		
Jul	227,758			1,704,452		
Aug	230,943			1,935,395		
Sep	224,988			2,160,383		
Oct	236,004			2,396,387		
Nov	249,432			2,645,819		
Dec	257,766			2,903,585		
Other Italian						
Jan	62,369	65,790	5.5	62,369	65,790	5.5
Feb	59,488	62,885	5.7	121,857	128,675	5.6
Mar	70,520			192,377		
Apr	59,741			252,118		
May	57,934			310,052		
Jun	56,766			366,818		
Jul	60,775			427,593		
Aug	64,080			491,673		
Sep	64,054			555,727		
Oct	65,107			620,834		
Nov	64,144			684,978		
Dec	63,612			748,590		

See footnote(s) at end of table.

--continued

**Dairy Products: Production by Product and Month,  
United States, 2004-2005 <sup>1</sup> (continued)**

Product and Month	By Month			Cumulative		
	2004	2005	Change From 2004	2004	2005	Change From 2004
	<i>1,000 Pounds</i>	<i>1,000 Pounds</i>	<i>Percent</i>	<i>1,000 Pounds</i>	<i>1,000 Pounds</i>	<i>Percent</i>
Butter						
Jan	131,859	128,653	-2.4	131,859	128,653	-2.4
Feb	105,788	113,498	7.3	237,647	242,151	1.9
Mar	96,741			334,388		
Apr	96,521			430,909		
May	106,597			537,506		
Jun	96,975			634,481		
Jul	91,229			725,710		
Aug	88,618			814,328		
Sep	92,128			906,456		
Oct	101,549			1,008,005		
Nov	97,489			1,105,494		
Dec	114,613			1,220,107		
Nonfat Dry Milk, Human						
Jan	120,490	93,775	-22.2	120,490	93,775	-22.2
Feb	115,772	94,266	-18.6	236,262	188,041	-20.4
Mar	118,018			354,280		
Apr	134,057			488,337		
May	151,108			639,445		
Jun	143,830			783,275		
Jul	134,036			917,311		
Aug	113,754			1,031,065		
Sep	93,936			1,125,001		
Oct	94,769			1,219,770		
Nov	83,788			1,303,558		
Dec	93,201			1,396,759		
Total Dry Whey <sup>2</sup>						
Jan	87,073	86,194	-1.0	87,073	86,194	-1.0
Feb	83,904	80,196	-4.4	170,977	166,390	-2.7
Mar	93,745			264,722		
Apr	91,978			356,700		
May	90,491			447,191		
Jun	86,879			534,070		
Jul	83,851			617,921		
Aug	86,919			704,840		
Sep	80,057			784,897		
Oct	80,577			865,474		
Nov	83,645			949,119		
Dec	87,660			1,036,779		

See footnote(s) at end of table.

--continued



**Dairy Products: Production by Product and Month,  
United States, 2004-2005 <sup>1</sup> (continued)**

Product and Month	By Month			Cumulative		
	2004	2005	Change From 2004	2004	2005	Change From 2004
	<i>1,000 Pounds</i>	<i>1,000 Pounds</i>	<i>Percent</i>	<i>1,000 Pounds</i>	<i>1,000 Pounds</i>	<i>Percent</i>
Cream Cottage Cheese						
Jan	31,897	29,496	-7.5	31,897	29,496	-7.5
Feb	30,642	27,913	-8.9	62,539	57,409	-8.2
Mar	34,940			97,479		
Apr	31,360			128,839		
May	30,688			159,527		
Jun	31,682			191,209		
Jul	32,708			223,917		
Aug	33,308			257,225		
Sep	32,348			289,573		
Oct	31,406			320,979		
Nov	29,439			350,418		
Dec	29,385			379,803		
Lowfat Cottage Cheese						
Jan	31,839	29,468	-7.4	31,839	29,468	-7.4
Feb	30,591	30,454	-0.4	62,430	59,922	-4.0
Mar	35,649			98,079		
Apr	32,172			130,251		
May	34,300			164,551		
Jun	34,139			198,690		
Jul	32,558			231,248		
Aug	33,948			265,196		
Sep	33,765			298,961		
Oct	31,472			330,433		
Nov	28,806			359,239		
Dec	28,835			388,074		
	<i>1,000 Gallons</i>	<i>1,000 Gallons</i>	<i>Percent</i>	<i>1,000 Gallons</i>	<i>1,000 Gallons</i>	<i>Percent</i>
Ice Cream, Hard						
Jan	59,132	60,440	2.2	59,132	60,440	2.2
Feb	65,823	64,100	-2.6	124,955	124,540	-0.3
Mar	78,711			203,666		
Apr	77,391			281,057		
May	75,073			356,130		
Jun	85,760			441,890		
Jul	78,759			520,649		
Aug	73,422			594,071		
Sep	70,675			664,746		
Oct	68,468			733,214		
Nov	59,175			792,389		
Dec	55,182			847,571		

See footnote(s) at end of table.

--continued

**Dairy Products: Production by Product and Month,  
United States, 2004-2005 <sup>1</sup> (continued)**

Product and Month	By Month			Cumulative		
	2004	2005	Change From 2004	2004	2005	Change From 2004
	<i>1,000 Gallons</i>	<i>1,000 Gallons</i>	<i>Percent</i>	<i>1,000 Gallons</i>	<i>1,000 Gallons</i>	<i>Percent</i>
<b>Ice Cream, Lowfat</b>						
Jan	25,947	27,079	4.4	25,947	27,079	4.4
Feb	26,832	27,982	4.3	52,779	55,061	4.3
Mar	36,689			89,468		
Apr	38,960			128,428		
May	38,859			167,287		
Jun	43,613			210,900		
Jul	42,117			253,017		
Aug	38,783			291,800		
Sep	33,621			325,421		
Oct	30,233			355,654		
Nov	26,655			382,309		
Dec	26,988			409,297		
<b>Ice Cream, NF, Hard</b>						
Jan	1,430	1,164	-18.6	1,430	1,164	-18.6
Feb	1,482	1,456	-1.8	2,912	2,620	-10.0
Mar	1,693			4,605		
Apr	1,972			6,577		
May	1,795			8,372		
Jun	1,928			10,300		
Jul	1,792			12,092		
Aug	1,645			13,737		
Sep	1,505			15,242		
Oct	1,655			16,897		
Nov	1,115			18,012		
Dec	1,298			19,310		
<b>Sherbet, Hard</b>						
Jan	3,766	4,194	11.4	3,766	4,194	11.4
Feb	3,973	4,083	2.8	7,739	8,277	7.0
Mar	5,609			13,348		
Apr	5,171			18,519		
May	4,944			23,463		
Jun	5,805			29,268		
Jul	4,693			33,961		
Aug	4,632			38,593		
Sep	4,235			42,828		
Oct	3,582			46,410		
Nov	3,429			49,839		
Dec	2,875			52,714		

See footnote(s) at end of table.

--continued

**Dairy Products: Production by Product and Month,  
United States, 2004-2005 (continued)**

Product and Month	By Month			Cumulative		
	2004	2005	Change From 2004	2004	2005	Change From 2004
	<i>1,000 Gallons</i>	<i>1,000 Gallons</i>	<i>Percent</i>	<i>1,000 Gallons</i>	<i>1,000 Gallons</i>	<i>Percent</i>
Sour Cream						
Jan	76,004	76,883	1.2	76,004	76,883	1.2
Feb	72,813	73,297	0.7	148,817	150,180	0.9
Mar	84,322			233,139		
Apr	76,004			309,143		
May	76,013			385,156		
Jun	80,348			465,504		
Jul	75,003			540,507		
Aug	82,175			622,682		
Sep	77,055			699,737		
Oct	84,679			784,416		
Nov	99,206			883,622		
Dec	91,511			975,133		

See footnote(s) at end of table.

--continued

**Dairy Products: Production by Product and Month,  
United States, 2004-2005 (continued)**

Product and Month	By Month			Cumulative		
	2004	2005	Change From 2004	2004	2005	Change From 2004
	<i>1,000 Gallons</i>	<i>1,000 Gallons</i>	<i>Percent</i>	<i>1,000 Gallons</i>	<i>1,000 Gallons</i>	<i>Percent</i>
Yogurt						
Jan	214,984	223,206	3.8	214,984	223,206	3.8
Feb	209,761	237,710	13.3	424,745	460,916	8.5
Mar	232,509			657,254		
Apr	214,804			872,058		
May	220,733			1,092,791		
Jun	228,504			1,321,295		
Jul	207,168			1,528,463		
Aug	227,608			1,756,071		
Sep	237,145			1,993,216		
Oct	209,084			2,202,300		
Nov	189,753			2,392,053		
Dec	206,142			2,598,195		

See footnote(s) at end of table.

--continued

**Dairy Products: Production by Product and Month,  
United States, 2004-2005 <sup>1</sup> (continued)**

Product and Month	By Month			Cumulative		
	2004	2005	Change From 2004	2004	2005	Change From 2004
	<i>1,000 Gallons</i>	<i>1,000 Gallons</i>	<i>Percent</i>	<i>1,000 Gallons</i>	<i>1,000 Gallons</i>	<i>Percent</i>
Frozen Yogurt						
Jan	4,403	4,299	-2.4	4,403	4,299	-2.4
Feb	4,973	4,520	-9.1	9,376	8,819	-5.9
Mar	6,246			15,622		
Apr	6,016			21,638		
May	6,282			27,920		
Jun	6,419			34,339		
Jul	5,811			40,150		
Aug	6,023			46,173		
Sep	5,416			51,589		
Oct	4,813			56,402		
Nov	4,515			60,917		
Dec	4,145			65,062		

<sup>1</sup> January 2005 data revised.

<sup>2</sup> Excludes all modified dry whey products.

**Total Cheese, Excluding Cottage Cheese: Production by  
State and United States, February 2004-2005**

State	Feb 2004	Jan <sup>1</sup> 2005	Feb 2005	Change From	
				Feb 2004	Jan 2005
	<i>1,000 Pounds</i>	<i>1,000 Pounds</i>	<i>1,000 Pounds</i>	<i>Percent</i>	<i>Percent</i>
CA	158,831	179,708	162,055	2.0	-9.8
IL	7,073	7,612	7,282	3.0	-4.3
IA	11,714	13,191	12,011	2.5	-8.9
MA	40	46	43	7.5	-6.5
MN	48,875	52,186	49,203	0.7	-5.7
MO	5,785	5,718	5,458	-5.7	-4.5
NY	55,863	52,555	55,568	-0.5	5.7
OH	14,031	16,360	15,318	9.2	-6.4
PA	31,326	31,537	29,240	-6.7	-7.3
SD	13,363	14,511	13,057	-2.3	-10.0
UT	5,351	4,443	4,349	-18.7	-2.1
WI	183,238	195,560	184,225	0.5	-5.8
Oth Sts <sup>2</sup>	168,798	181,257	170,307	0.9	-6.0
US	704,288	754,684	708,116	0.5	-6.2
N Atlantic	102,504	100,568	98,121	-4.3	-2.4
S Atlantic	3,147	3,583	3,092	-1.7	-13.7
E N Central	218,126	233,737	220,773	1.2	-5.5
W N Central	83,122	89,434	83,097		-7.1
S Central	7,319	7,302	7,163	-2.1	-1.9
West	290,070	320,060	295,870	2.0	-7.6

<sup>1</sup> Revised.

<sup>2</sup> States not shown when fewer than 3 plants reported or individual plant operations could be disclosed. Percent change shown only when comparable States are included in the calculation.

**American Cheese: Production by State and United States, February 2004-2005**

State	Feb 2004	Jan <sup>1</sup> 2005	Feb 2005	Change From	
				Feb 2004	Jan 2005
	<i>1,000 Pounds</i>	<i>1,000 Pounds</i>	<i>1,000 Pounds</i>	<i>Percent</i>	<i>Percent</i>
CA	66,684	72,968	65,694	-1.5	-10.0
ID	39,002	48,605	42,256	8.3	-13.1
IA	9,257	10,519	9,542	3.1	-9.3
MN	46,248	48,870	46,403	0.3	-5.0
NY	7,801	5,876	5,070	-35.0	-13.7
OH	2,348	2,963	2,655	13.1	-10.4
OR	7,813	9,722	8,875	13.6	-8.7
SD	6,667	6,665	6,146	-7.8	-7.8
WI	68,700	74,800	68,200	-0.7	-8.8
Oth Sts <sup>2</sup>	42,721	41,200	37,545	-12.1	-8.9
US	297,241	322,188	292,386	-1.6	-9.2
Atlantic	13,799	12,680	10,484	-24.0	-17.3
E N Central	71,945	78,874	71,753	-0.3	-9.0
W N Central	62,520	66,426	62,426	-0.2	-6.0
S Central	4,003	4,204	3,856	-3.7	-8.3
West	144,974	160,004	143,867	-0.8	-10.1

<sup>1</sup> Revised.

<sup>2</sup> States not shown when fewer than 3 plants reported or individual plant operations could be disclosed. Percent change shown only when comparable States are included in the calculation.

**Cheddar Cheese: Production by State and United States, February 2004-2005**

State	Feb 2004	Jan <sup>1</sup> 2005	Feb 2005	Change From	
				Feb 2004	Jan 2005
	<i>1,000 Pounds</i>	<i>1,000 Pounds</i>	<i>1,000 Pounds</i>	<i>Percent</i>	<i>Percent</i>
CA	43,941	47,382	43,098	-1.9	-9.0
ID	18,667	21,600	18,461	-1.1	-14.5
MN	41,760	44,593	41,785	0.1	-6.3
NY	7,799	5,799	4,961	-36.4	-14.5
SD	3,785	4,622	4,636	22.5	0.3
WI	55,100	59,400	54,300	-1.5	-8.6
Oth Sts <sup>2</sup>	52,256	53,811	49,168	-5.9	-8.6
US	223,308	237,513	216,409	-3.1	-8.9
Atlantic	13,483	11,783	9,896	-26.6	-16.0
E N Cen	56,789	61,599	56,016	-1.4	-9.1
W N Cen	52,273	56,723	53,257	1.9	-6.1
S Cen	4,002	4,203	3,855	-3.7	-8.3
West	96,761	103,205	93,385	-3.5	-9.5

<sup>1</sup> Revised.

<sup>2</sup> States not shown when fewer than 3 plants reported or individual plant operations could be disclosed. Percent change shown only when comparable States are included in the calculation.

**Mozzarella Cheese: Production by State and United States, February 2004-2005**

State	Feb 2004	Jan <sup>1</sup> 2005	Feb 2005	Change From	
				Feb 2004	Jan 2005
	<i>1,000 Pounds</i>	<i>1,000 Pounds</i>	<i>1,000 Pounds</i>	<i>Percent</i>	<i>Percent</i>
CA	69,638	78,150	72,856	4.6	-6.8
NY	14,871	14,469	13,819	-7.1	-4.5
PA	18,038	18,984	17,003	-5.7	-10.4
WI	63,200	63,300	61,800	-2.2	-2.4
Oth Sts <sup>2</sup>	74,266	76,496	74,649	0.5	-2.4
US	240,013	251,399	240,127		-4.5
Atlantic <sup>3</sup>	40,688	41,848	37,713	-7.3	-9.9
E N Central	76,138	76,700	75,055	-1.4	-2.1
West	113,984	122,895	118,632	4.1	-3.5

<sup>1</sup> Revised.

<sup>2</sup> States not shown when fewer than 3 plants reported or individual plant operations could be disclosed. Percent change shown only when comparable States are included in the calculation.

<sup>3</sup> Region totals may not add to U.S. when compiled regions could not be disclosed.

**Butter: Production by State and United States, February 2004-2005**

State	Feb 2004	Jan <sup>1</sup> 2005	Feb 2005	Change From	
				Feb 2004	Jan 2005
	<i>1,000 Pounds</i>	<i>1,000 Pounds</i>	<i>1,000 Pounds</i>	<i>Percent</i>	<i>Percent</i>
CA	31,046	34,045	31,365	1.0	-7.9
NY	2,294	1,761	1,687	-26.5	-4.2
PA	5,296	6,509	6,464	22.1	-0.7
WI	26,265	38,865	30,400	15.7	-21.8
Oth Sts <sup>2</sup>	40,887	47,473	43,582	6.6	-8.2
US	105,788	128,653	113,498	7.3	-11.8
N Atlantic <sup>3</sup>	10,505	12,795	11,803	12.4	-7.8
E N Central	28,686	41,314	32,764	14.2	-20.7
W N Central	10,126	7,422	7,032	-30.6	-5.3
West	45,702	51,088	47,566	4.1	-6.9

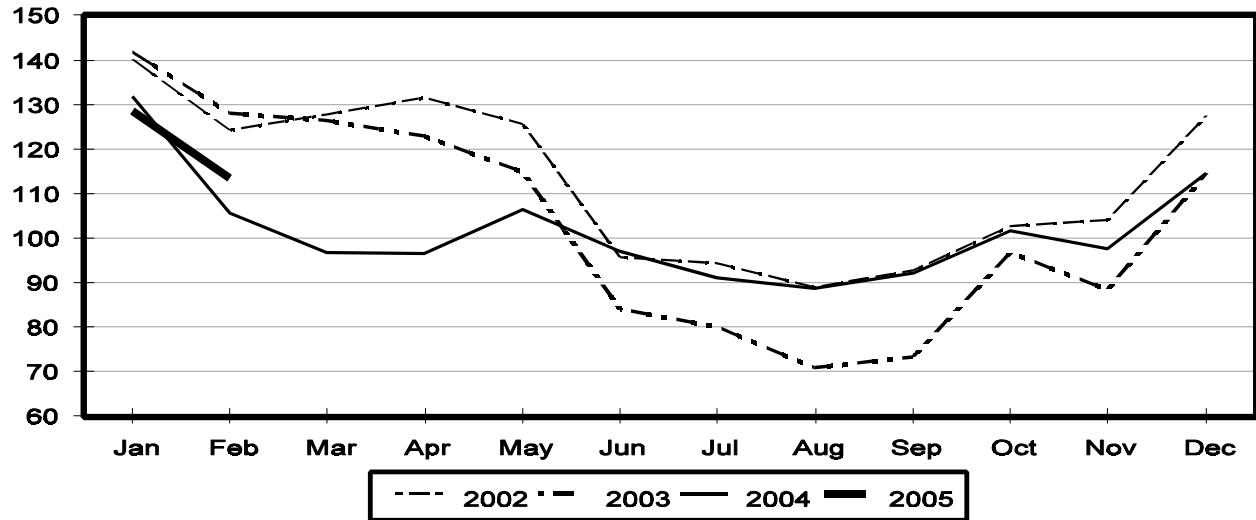
<sup>1</sup> Revised.

<sup>2</sup> States not shown when fewer than 3 plants reported or individual plant operations could be disclosed. Percent change shown only when comparable States are included in the calculation.

<sup>3</sup> Region totals may not add to U.S. when compiled regions could not be disclosed.

## Total Butter Production United States

Million Pounds





**Nonfat Dry Milk, Human: Production by State  
and United States, February 2004-2005**

State	Feb 2004	Jan <sup>1</sup> 2005	Feb 2005	Change From	
				Feb 2004	Jan 2005
	<i>1,000 Pounds</i>	<i>1,000 Pounds</i>	<i>1,000 Pounds</i>	<i>Percent</i>	<i>Percent</i>
CA	58,790	39,365	41,554	-29.3	5.6
Oth Sts <sup>2</sup>	47,344	54,410	52,712	11.3	-3.1
US	115,772	93,775	94,266	-18.6	0.5
Atlantic	11,764	13,885	14,455	22.9	4.1
E N Central	1,163	3,106	3,289	182.8	5.9
W N Central	5,238	5,232	5,163	-1.4	-1.3
S Central	4,105	6,259	6,916	68.5	10.5
West	93,502	65,293	64,443	-31.1	-1.3

<sup>1</sup> Revised.

<sup>2</sup> States not shown when fewer than 3 plants reported or individual plant operations could be disclosed. Percent change shown only when comparable States are included in the calculation.

**Dry Whey, Human: Production by State  
and United States, February 2004-2005**

State	Feb 2004	Jan <sup>1</sup> 2005	Feb 2005	Change From	
				Feb 2004	Jan 2005
	<i>1,000 Pounds</i>	<i>1,000 Pounds</i>	<i>1,000 Pounds</i>	<i>Percent</i>	<i>Percent</i>
CA	9,160	8,671	8,953	-2.3	3.3
MN	4,132	4,036	3,660	-11.4	-9.3
NY	10,099	10,349	9,460	-6.3	-8.6
PA	8,850	9,046	7,925	-10.5	-12.4
UT	1,758	1,696	1,179	-32.9	-30.5
WI	24,292	24,179	23,400	-3.7	-3.2
Oth Sts <sup>2</sup>	18,343	21,836	19,654	7.1	-10.0
US	76,634	79,813	74,231	-3.1	-7.0
Atlantic	18,949	19,395	17,385	-8.3	-10.4
Central	36,514	37,944	35,510	-2.7	-6.4
West	21,171	22,474	21,336	0.8	-5.1

<sup>1</sup> Revised.

<sup>2</sup> States not shown when fewer than 3 plants reported or individual plant operations could be disclosed. Percent change shown only when comparable States are included in the calculation.

**Ice Cream, Hard: Production by State and United States, February 2004-2005**

State	Feb 2004	Jan <sup>1</sup> 2005	Feb 2005	Change From	
				Feb 2004	Jan 2005
	<i>1,000 Gallons</i>	<i>1,000 Gallons</i>	<i>1,000 Gallons</i>	<i>Percent</i>	<i>Percent</i>
CA	8,090	5,978	7,760	-4.1	29.8
FL	2,700	1,700	1,800	-33.3	5.9
IL	3,000	2,210	2,751	-8.3	24.5
IN	7,052	5,396	6,435	-8.7	19.3
MD	1,488	1,446	1,488		2.9
MA	4,370	4,855	3,396	-22.3	-30.1
MI	1,250	1,327	1,286	2.9	-3.1
MN	2,746	2,761	3,169	15.4	14.8
MO	1,703	2,109	1,705	0.1	-19.2
NY	2,250	2,136	2,071	-8.0	-3.0
NC	1,195	1,025	1,053	-11.9	2.7
OH	2,247	1,622	1,989	-11.5	22.6
OR	880	769	803	-8.8	4.4
PA	2,915	2,807	2,980	2.2	6.2
TN	1,121	1,474	1,141	1.8	-22.6
TX	3,809	3,365	3,243	-14.9	-3.6
UT	1,309	1,805	1,955	49.4	8.3
Oth Sts <sup>2</sup>	17,698	17,655	19,075	7.8	8.0
US	65,823	60,440	64,100	-2.6	6.1
N Atlantic	12,005	12,868	11,918	-0.7	-7.4
S Atlantic	6,766	5,121	5,885	-13.0	14.9
E N Central	14,294	11,218	13,149	-8.0	17.2
W N Central	10,626	11,091	11,750	10.6	5.9
S Central	8,095	8,453	7,701	-4.9	-8.9
West	14,037	11,689	13,697	-2.4	17.2

<sup>1</sup> Revised.

<sup>2</sup> States not shown when fewer than 3 plants reported or individual plant operations could be disclosed. Percent change shown only when comparable States are included in the calculation.

**Canned Milk and Dry Milk Products: Manufacturers' Shipments,  
and Stocks, February, 2004-2005**

Product	Feb 2004	Jan 2005 <sup>1</sup>	Feb 2005	Change From	
				Feb 2004	Jan 2005
	<b>Manufacturers' Shipments <sup>2</sup></b>				
	<i>1,000 Pounds</i>	<i>1,000 Pounds</i>	<i>1,000 Pounds</i>	<i>Percent</i>	<i>Percent</i>
Nonfat Dry Milk, Human	113,215	94,317	87,458	-22.8	-7.3
	<b>Manufacturers' Stocks End-of-Month <sup>3</sup></b>				
	<i>1,000 Pounds</i>	<i>1,000 Pounds</i>	<i>1,000 Pounds</i>	<i>Percent</i>	<i>Percent</i>
Canned Evaporated and Condensed Whole Milk	45,629	46,327	40,512	-11.2	-12.6
Nonfat Dry Milk, Human	95,206	82,615	79,050	-17.0	-4.3
Dry Buttermilk, Total	5,274	10,988	7,597	44.0	-30.9

<sup>1</sup> Revised.

<sup>2</sup> For dry products, shipments of bulk goods only.

<sup>3</sup> Stocks held by manufacturers at all points and in transit.

**Procedures and Reliability:** Estimates included in this report are based on data provided each month by manufacturers of these products. In 32 States, the State Departments of Agriculture assist in collection of data, which eliminates duplicate reporting and reduces respondent burden. Data are collected by mail, personal and telephone interviews following the close of each month. There were 1,126 manufacturers that made one or more products in 2003. Each month, reports are generally received from all dairy plants in States with small numbers of plants. In States with large numbers of plants, survey procedures are designed to obtain monthly reports from all large plants and from a sample of small plants. Monthly estimates are based upon returns from about 70 percent of the plants which account for 70 to 90 percent of the total production of major dairy products.

**Revision Policy:** Monthly estimates are subject to revision the month following the preliminary estimates. Annual estimates are published in the "**Dairy Products**" report published each April which includes any revisions made to current and previous year. An attempt is made to get information from all plants for preparing these estimates

## ACCESS TO REPORTS!!

---

For your convenience, there are several ways to obtain NASS reports, data products, and services:

### INTERNET ACCESS

All NASS reports are available free of charge on the worldwide Internet. For access, connect to the Internet and go to the NASS Home Page at: [www.usda.gov/nass/](http://www.usda.gov/nass/). Select "Today's Reports" or Publications and then Reports Calendar or Publications and then Search, by Title or Subject.

### E-MAIL SUBSCRIPTION

All NASS reports are available by subscription free of charge direct to your e-mail address. Starting with the NASS Home Page at [www.usda.gov/nass/](http://www.usda.gov/nass/), click on **Publications**, then click on the **Subscribe by E-mail** button which takes you to the page describing e-mail delivery of reports. Finally, click on **Go to the Subscription Page** and follow the instructions.

-----

### PRINTED REPORTS OR DATA PRODUCTS

**CALL OUR TOLL-FREE ORDER DESK: 800-999-6779 (U.S. and Canada)**  
**Other areas, please call 703-605-6220      FAX: 703-605-6900**  
**(Visa, MasterCard, check, or money order acceptable for payment.)**

-----

### ASSISTANCE

For **assistance** with general agricultural statistics or further information about NASS or its products or services, contact the **Agricultural Statistics Hotline** at **800-727-9540**, 7:30 a.m. to 4:00 p.m. ET, or e-mail: [nass@nass.usda.gov](mailto:nass@nass.usda.gov).

---

The U.S. Department of Agriculture (USDA) prohibits discrimination in all its programs and activities on the basis of race, color, national origin, sex, religion, age, disability, political beliefs, sexual orientation, and marital or family status. (Not all prohibited bases apply to all programs.) Persons with disabilities who require alternative means for communication of program information (Braille, large print, audiotape, etc.) should contact USDA's TARGET Center at 202-720-2600 (voice and TDD).

To file a complaint of discrimination, write USDA, Director, Office of Civil Rights, Room 326-W, Whitten Building, 14th and Independence Avenue, SW, Washington, DC 20250-9410 or call 202-720-5964 (voice and TDD). USDA is an equal opportunity provider and employer.