

Released May 5, 2005, by the National Agricultural Statistics Service (NASS), Agricultural Statistics Board, U.S. Department of Agriculture. For information on *Dairy Products* call Ann Summa at (202) 720-3278, office hours 7:30 a.m. to 4:00 p.m. ET.

March 2005 Highlights

Total cheese output (excluding cottage cheese) was 797 million pounds, 1.4 percent above March 2004 and 12.6 percent above February 2005.

American type cheese production totaled 329 million pounds, 1.4 percent above March 2004 and 12.1 percent above February 2005.

Butter production was 120 million pounds in March, 19.3 percent above March 2004 and 5.5 percent above February 2005.

Frozen dessert: (comparisons with March 2004)

Ice cream, Regular (hard) --- 78.6 million gallons, up 0.2 percent.

Ice cream, Lowfat (total) --- 36.7 million gallons, down 3.2 percent.

Ice cream, Nonfat (hard) --- 1.67 million gallons, up slightly.

Sherbet (hard) --- 4.97 million gallons, down 6.1 percent.

Frozen Yogurt (total) --- 6.11 million gallons, down 2.6 percent.

Nonfat dry milk for human food: (compared with March 2004) --- 109 million pounds, down 7.7 percent.

Dry whey products: (comparisons with March 2004)

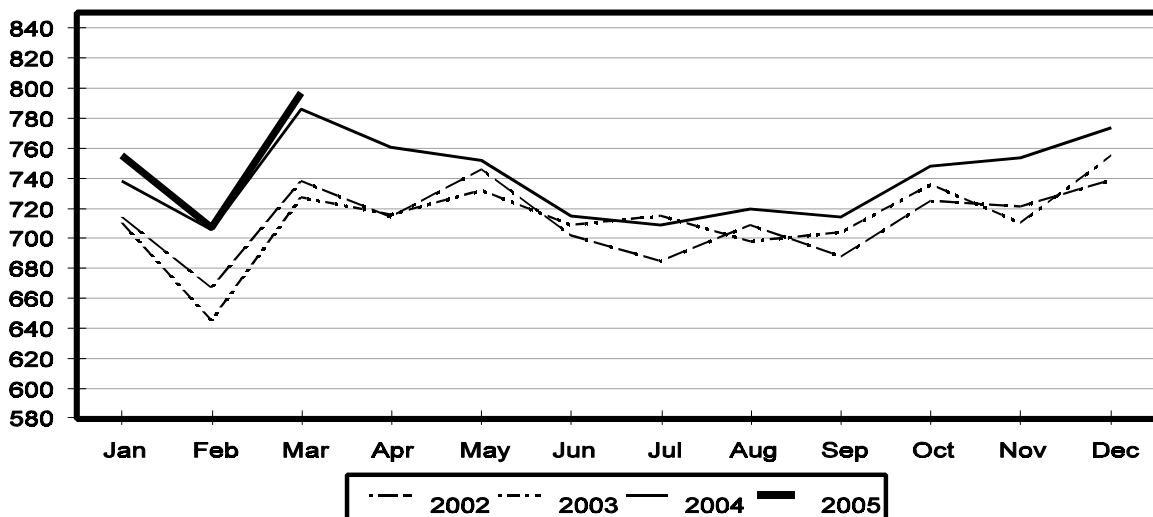
Dry whey, human --- 83.8 million pounds, up 1.4 percent.

Dry whey, animal --- 8.38 million pounds, down 18.0 percent.

Dry whey, total --- 92.1 million pounds, down 0.7 percent.

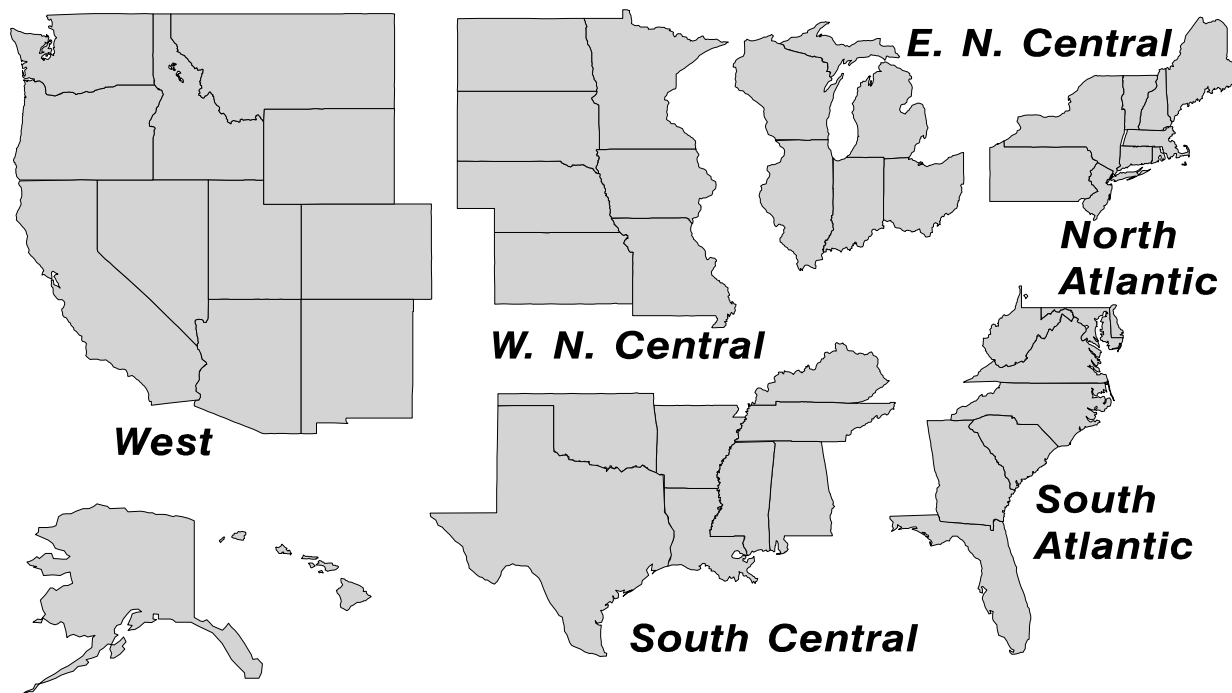
Total Cheese Production United States

Million Pounds



U. S. Geographic Regions Dairy Products

State totals are not published when fewer than 3 firms have reported or one firm comprises more than 60 percent of the State total. If we are not able to publish a region for confidentiality reasons, it will be combined with other regions when possible. For example, if North Atlantic can not be published, then it will be combined with South Atlantic to publish Atlantic. The West North Central and East North Central will be combined, if necessary, to form North Central. In the event that neither could be published, they may be combined with South Central to publish Central. Some tables will have only limited regions shown, therefore the regions may not add to the United States total.



Contents

Page

Dairy Products: Production by Product, United States, March, 2004-2005	1
Whey and Modified Whey Products: Production, Stocks, and Prices, United States, March, 2004-2005	2
Dairy Products: Production by Product and Month, United States, 2004-2005	3
Select Commodities by State and United States, March, 2004-2005	10
Select Commodities by State, by Month, 2004 and Total 2003-2004	13
Canned Milk and Dry Milk Products: Manufacturer's Shipments, Stocks, and Selling Prices, March, 2004-2005	17
Procedures and Reliability	18

Special Note

A plant reporting error caused a revision to cheddar and other American cheese after the release of the *Dairy Products 2004 Summary*. This created the need for updated tables for those two commodities. Neither total American cheese or any associated plant counts were affected in the annual publication.

**Dairy Products: Production by Product,
United States, March, 2004-2005**

Product	Mar 2004	Feb 2005 ¹	Mar 2005	Change From	
				Mar 2004	Feb 2005
	<i>1,000 Pounds</i>	<i>1,000 Pounds</i>	<i>1,000 Pounds</i>	<i>Percent</i>	<i>Percent</i>
Butter	100,383	113,492	119,781	19.3	5.5
Cheese					
American Types ²	324,234	293,137	328,632	1.4	12.1
Cheddar	260,336	237,535	265,774	2.1	11.9
Swiss	24,424	21,902	23,999	-1.7	9.6
Brick and Muenster	6,791	5,235	6,269	-7.7	19.8
Cream and Neufchatel	57,543	51,909	59,683	3.7	15.0
Hispanic	12,733	13,203	14,662	15.1	11.1
Mozzarella	264,782	239,290	269,833	1.9	12.8
Other Italian Types	69,259	62,498	70,976	2.5	13.6
Total Italian Types	334,041	301,788	340,809	2.0	12.9
All Other Types	25,860	20,191	22,448	-13.2	11.2
Total	785,626	707,365	796,502	1.4	12.6
Cottage Cheese, Curd ³	43,386	34,546	41,488	-4.4	20.1
Cottage Cheese, Cream ⁴	34,783	27,939	32,451	-6.7	16.1
Cottage Cheese, Lowfat ⁵	36,032	31,520	33,371	-7.4	5.9
Canned Evaporated and Condensed Whole Milk	47,310	37,449	49,144	3.9	31.2
Dry Whole Milk	3,546	2,820	2,645	-25.4	-6.2
Nonfat Dry Milk, Human	117,981	94,334	108,928	-7.7	15.5
Dry Skim Milk, Animal	320	405	395	23.4	-2.5
Dry Buttermilk	4,377	5,393	5,722	30.7	6.1
Sour Cream	84,898	75,324	88,613	4.4	17.6
Yogurt, Plain & Flavored	247,890	237,598	264,733	6.8	11.4
	<i>1,000 Gallons</i>	<i>1,000 Gallons</i>	<i>1,000 Gallons</i>	<i>Percent</i>	<i>Percent</i>
Frozen Products					
Ice Cream, Hard	78,409	64,240	78,551	0.2	22.3
Ice Cream, Lowfat, Hard	10,168	8,262	10,142	-0.3	22.8
Ice Cream, Lowfat, Soft	27,688	19,821	26,515	-4.2	33.8
Ice Cream, Lowfat, Total	37,856	28,083	36,657	-3.2	30.5
Ice Cream, Nonfat, Hard	1,669	1,619	1,671	0.1	3.2
Sherbet, Hard	5,295	4,116	4,973	-6.1	20.8
Water and Juice Ices	6,039	4,316	6,218	3.0	44.1
Frozen Yogurt, Total	6,269	4,457	6,105	-2.6	37.0
Regular & Lowfat, Hard	1,859	1,401	1,778	-4.4	26.9
Nonfat, Hard	1,047	879	1,052	0.5	19.7
Other Frozen Dairy Products	753	871	970	28.8	11.4
Mix for Frozen Products					
Ice Cream Mix	47,820	34,755	42,705	-10.7	22.9
Ice Cream, Lowfat, Mix	20,516	15,547	20,318	-1.0	30.7
Ice Cream, Nonfat, Mix	1,246	1,147	1,228	-1.4	7.1
Sherbet Mix	3,805	2,806	3,232	-15.1	15.2
Yogurt Mix	3,701	2,622	3,591	-3.0	37.0

¹ Revised.

² Includes Cheddar, Colby, Monterey, and Jack.

³ Mostly used for processing into cream or lowfat cottage cheese.

⁴ Fat content 4 percent or more.

⁵ Fat content less than 4 percent.

**Whey and Modified Whey Products: Production, Stocks,
and Prices, United States, March, 2004-2005**

Product	Mar 2004	Feb 2005 ¹	Mar 2005	Change From	
				Mar 2004	Feb 2005
Production					
	<i>1,000 Pounds</i>	<i>1,000 Pounds</i>	<i>1,000 Pounds</i>	<i>Percent</i>	<i>Percent</i>
Condensed Whey, Solids Content ²					
Sweet-Type, Human	7,196	5,297	6,567	-8.7	24.0
Dry Whey Products					
Dry Whey, Human	82,570	74,088	83,763	1.4	13.1
Dry Whey, Animal	10,218	5,796	8,376	-18.0	44.5
Dry Whey, Total	92,788	79,884	92,139	-0.7	15.3
Reduced Lactose and Minerals					
Human Food	4,295	3,559	3,590	-16.4	0.9
Animal Feed	3,625	3,810	4,347	19.9	14.1
Lactose, Human and Animal	56,234	52,686	55,827	-0.7	6.0
Whey					
Protein Concentrate, Human ³	26,383	23,187	26,179	-0.8	12.9
Protein Concentrate, Animal ³	4,630	3,950	4,602	-0.6	16.5
Manufacturers' Stocks End-of-Month ⁴					
	<i>1,000 Pounds</i>	<i>1,000 Pounds</i>	<i>1,000 Pounds</i>	<i>Percent</i>	<i>Percent</i>
Dry Whey Products					
Dry Whey, Human	35,164	35,567	36,342	3.4	2.2
Dry Whey, Animal	5,792	3,814	4,628	-20.1	21.3
Reduced Lactose and Minerals					
Human and Animal ⁵	7,117	4,832	4,260	-40.1	-11.8
Lactose, Human and Animal	56,635	65,839	64,311	13.6	-2.3
Whey Protein Concentrate, Human ³	24,575	22,359	23,574	-4.1	5.4
Whey Protein Concentrate, Animal ³	3,470	1,868	1,998	-42.4	7.0
Manufacturers' Selling Price ⁶					
	<i>Cents per Pound</i>	<i>Cents per Pound</i>	<i>Cents per Pound</i>	<i>Cents Change</i>	<i>Cents Change</i>
Dry Whey, Animal	18.2	22.6	24.0	5.8	1.4

¹ Revised.

² Final marketable product only. Does not include quantity used or shipped to another plant for further processing into dry whey or modified whey products. Does not include sweet-type, animal whey.

³ Whey Protein Concentrate, 25.0 to 89.9 percent.

⁴ Stocks held by manufacturers at all points and in transit.

⁵ Reduced lactose and minerals stocks combined to avoid disclosure of individual operations.

⁶ Prices for bulk goods, f.o.b. plant. Average monthly prices reported by firms.

**Dairy Products: Production by Product and Month,
United States, 2004-2005 ¹**

Product and Month	By Month			Cumulative		
	2004	2005	Change From 2004	2004	2005	Change From 2004
	<i>1,000 Pounds</i>	<i>1,000 Pounds</i>	<i>Percent</i>	<i>1,000 Pounds</i>	<i>1,000 Pounds</i>	<i>Percent</i>
Total Cheese						
Jan	737,997	754,684	2.3	737,997	754,684	2.3
Feb	705,525	707,365	0.3	1,443,522	1,462,049	1.3
Mar	785,626	796,502	1.4	2,229,148	2,258,551	1.3
Apr	761,046			2,990,194		
May	752,051			3,742,245		
Jun	715,332			4,457,577		
Jul	708,739			5,166,316		
Aug	719,538			5,885,854		
Sep	714,357			6,600,211		
Oct	748,044			7,348,255		
Nov	754,345			8,102,600		
Dec	773,863			8,876,463		
American Cheese						
Jan	318,986	322,188	1.0	318,986	322,188	1.0
Feb	295,990	293,137	-1.0	614,976	615,325	0.1
Mar	324,234	328,632	1.4	939,210	943,957	0.5
Apr	325,061			1,264,271		
May	332,481			1,596,752		
Jun	308,517			1,905,269		
Jul	302,724			2,207,993		
Aug	300,384			2,508,377		
Sep	294,368			2,802,745		
Oct	309,184			3,111,929		
Nov	302,611			3,414,540		
Dec	324,236			3,738,776		
Cheddar Cheese ²						
Jan	259,327	261,049	0.7	259,327	261,049	0.7
Feb	237,293	237,535	0.1	496,620	498,584	0.4
Mar	260,336	265,774	2.1	756,956	764,358	1.0
Apr	264,068			1,021,024		
May	272,736			1,293,760		
Jun	249,420			1,543,180		
Jul	242,075			1,785,255		
Aug	237,758			2,023,013		
Sep	234,648			2,257,661		
Oct	245,489			2,503,150		
Nov	242,353			2,745,503		
Dec	258,924			3,004,427		

See footnote(s) at end of table.

--continued

**Dairy Products: Production by Product and Month,
United States, 2004-2005¹ (continued)**

Product and Month	By Month			Cumulative		
	2004	2005	Change From 2004	2004	2005	Change From 2004
	<i>1,000 Pounds</i>	<i>1,000 Pounds</i>	<i>Percent</i>	<i>1,000 Pounds</i>	<i>1,000 Pounds</i>	<i>Percent</i>
Italian Cheese						
Jan	310,574	317,189	2.1	310,574	317,189	2.1
Feb	300,625	301,788	0.4	611,199	618,977	1.3
Mar	334,041	340,809	2.0	945,240	959,786	1.5
Apr	310,075			1,255,315		
May	304,228			1,559,543		
Jun	291,946			1,851,489		
Jul	288,740			2,140,229		
Aug	296,512			2,436,741		
Sep	287,570			2,724,311		
Oct	300,981			3,025,292		
Nov	313,306			3,338,598		
Dec	321,692			3,660,290		
Mozzarella						
Jan	248,207	251,399	1.3	248,207	251,399	1.3
Feb	241,259	239,290	-0.8	489,466	490,689	0.2
Mar	264,782	269,833	1.9	754,248	760,522	0.8
Apr	250,697			1,004,945		
May	246,988			1,251,933		
Jun	234,934			1,486,867		
Jul	228,220			1,715,087		
Aug	232,497			1,947,584		
Sep	225,064			2,172,648		
Oct	235,938			2,408,586		
Nov	249,669			2,658,255		
Dec	258,281			2,916,536		
Other Italian						
Jan	62,367	65,790	5.5	62,367	65,790	5.5
Feb	59,366	62,498	5.3	121,733	128,288	5.4
Mar	69,259	70,976	2.5	190,992	199,264	4.3
Apr	59,378			250,370		
May	57,240			307,610		
Jun	57,012			364,622		
Jul	60,520			425,142		
Aug	64,015			489,157		
Sep	62,506			551,663		
Oct	65,043			616,706		
Nov	63,637			680,343		
Dec	63,411			743,754		

See footnote(s) at end of table.

--continued

**Dairy Products: Production by Product and Month,
United States, 2004-2005 ¹ (continued)**

Product and Month	By Month			Cumulative		
	2004	2005	Change From 2004	2004	2005	Change From 2004
	<i>1,000 Pounds</i>	<i>1,000 Pounds</i>	<i>Percent</i>	<i>1,000 Pounds</i>	<i>1,000 Pounds</i>	<i>Percent</i>
Butter						
Jan	129,346	128,653	-0.5	129,346	128,653	-0.5
Feb	108,593	113,492	4.5	237,939	242,145	1.8
Mar	100,383	119,781	19.3	338,322	361,926	7.0
Apr	100,324			438,646		
May	110,120			548,766		
Jun	99,156			647,922		
Jul	92,615			740,537		
Aug	90,329			830,866		
Sep	94,242			925,108		
Oct	104,386			1,029,494		
Nov	101,376			1,130,870		
Dec	118,808			1,249,678		
Nonfat Dry Milk, Human						
Jan	129,320	93,775	-27.5	129,320	93,775	-27.5
Feb	115,769	94,334	-18.5	245,089	188,109	-23.2
Mar	117,981	108,928	-7.7	363,070	297,037	-18.2
Apr	134,011			497,081		
May	151,291			648,372		
Jun	144,095			792,467		
Jul	134,566			927,033		
Aug	113,617			1,040,650		
Sep	93,936			1,134,586		
Oct	94,814			1,229,400		
Nov	83,789			1,313,189		
Dec	93,201			1,406,390		
Total Dry Whey ³						
Jan	86,784	86,194	-0.7	86,784	86,194	-0.7
Feb	84,585	79,884	-5.6	171,369	166,078	-3.1
Mar	92,788	92,139	-0.7	264,157	258,217	-2.2
Apr	91,816			355,973		
May	90,215			446,188		
Jun	86,681			532,869		
Jul	83,065			615,934		
Aug	86,673			702,607		
Sep	80,239			782,846		
Oct	80,884			863,730		
Nov	83,609			947,339		
Dec	87,559			1,034,898		

See footnote(s) at end of table.

--continued

**Dairy Products: Production by Product and Month,
United States, 2004-2005 ¹ (continued)**

Product and Month	By Month			Cumulative		
	2004	2005	Change From 2004	2004	2005	Change From 2004
	<i>1,000 Pounds</i>	<i>1,000 Pounds</i>	<i>Percent</i>	<i>1,000 Pounds</i>	<i>1,000 Pounds</i>	<i>Percent</i>
Cream Cottage Cheese						
Jan	32,541	29,496	-9.4	32,541	29,496	-9.4
Feb	30,439	27,939	-8.2	62,980	57,435	-8.8
Mar	34,783	32,451	-6.7	97,763	89,886	-8.1
Apr	31,113			128,876		
May	30,406			159,282		
Jun	30,862			190,144		
Jul	32,752			222,896		
Aug	33,029			255,925		
Sep	32,130			288,055		
Oct	30,838			318,893		
Nov	30,298			349,191		
Dec	28,038			377,229		
Lowfat Cottage Cheese						
Jan	32,847	29,468	-10.3	32,847	29,468	-10.3
Feb	31,469	31,520	0.2	64,316	60,988	-5.2
Mar	36,032	33,371	-7.4	100,348	94,359	-6.0
Apr	32,158			132,506		
May	34,149			166,655		
Jun	34,236			200,891		
Jul	32,462			233,353		
Aug	33,972			267,325		
Sep	34,435			301,760		
Oct	31,112			332,872		
Nov	30,599			363,471		
Dec	27,748			391,219		
	<i>1,000 Gallons</i>	<i>1,000 Gallons</i>	<i>Percent</i>	<i>1,000 Gallons</i>	<i>1,000 Gallons</i>	<i>Percent</i>
Ice Cream, Hard						
Jan	60,148	60,440	0.5	60,148	60,440	0.5
Feb	64,848	64,240	-0.9	124,996	124,680	-0.3
Mar	78,409	78,551	0.2	203,405	203,231	-0.1
Apr	76,836			280,241		
May	74,378			354,619		
Jun	85,245			439,864		
Jul	77,886			517,750		
Aug	73,697			591,447		
Sep	70,776			662,223		
Oct	68,134			730,357		
Nov	59,116			789,473		
Dec	55,193			844,666		

See footnote(s) at end of table.

--continued

**Dairy Products: Production by Product and Month,
United States, 2004-2005 ¹ (continued)**

Product and Month	By Month			Cumulative		
	2004	2005	Change From 2004	2004	2005	Change From 2004
	<i>1,000 Gallons</i>	<i>1,000 Gallons</i>	<i>Percent</i>	<i>1,000 Gallons</i>	<i>1,000 Gallons</i>	<i>Percent</i>
Ice Cream, Lowfat						
Jan	26,381	27,079	2.6	26,381	27,079	2.6
Feb	28,440	28,083	-1.3	54,821	55,162	0.6
Mar	37,856	36,657	-3.2	92,677	91,819	-0.9
Apr	39,687			132,364		
May	38,796			171,160		
Jun	41,920			213,080		
Jul	42,430			255,510		
Aug	39,329			294,839		
Sep	34,495			329,334		
Oct	31,233			360,567		
Nov	27,363			387,930		
Dec	27,544			415,474		
Ice Cream, NF, Hard						
Jan	1,359	1,164	-14.3	1,359	1,164	-14.3
Feb	1,462	1,619	10.7	2,821	2,783	-1.3
Mar	1,669	1,671	0.1	4,490	4,454	-0.8
Apr	2,009			6,499		
May	1,757			8,256		
Jun	1,904			10,160		
Jul	1,725			11,885		
Aug	1,708			13,593		
Sep	1,455			15,048		
Oct	1,630			16,678		
Nov	1,118			17,796		
Dec	1,281			19,077		
Sherbet, Hard						
Jan	3,558	4,194	17.9	3,558	4,194	17.9
Feb	3,837	4,116	7.3	7,395	8,310	12.4
Mar	5,295	4,973	-6.1	12,690	13,283	4.7
Apr	4,665			17,355		
May	4,714			22,069		
Jun	5,602			27,671		
Jul	4,700			32,371		
Aug	4,690			37,061		
Sep	4,214			41,275		
Oct	3,638			44,913		
Nov	3,434			48,347		
Dec	2,920			51,267		

See footnote(s) at end of table.

--continued

**Dairy Products: Production by Product and Month,
United States, 2004-2005 (continued)**

Product and Month	By Month			Cumulative		
	2004	2005	Change From 2004	2004	2005	Change From 2004
	<i>1,000 Gallons</i>	<i>1,000 Gallons</i>	<i>Percent</i>	<i>1,000 Gallons</i>	<i>1,000 Gallons</i>	<i>Percent</i>
Sour Cream						
Jan	75,950	76,883	1.2	75,950	76,883	1.2
Feb	69,869	75,324	7.8	145,819	152,207	4.4
Mar	84,898	88,613	4.4	230,717	240,820	4.4
Apr	74,707			305,424		
May	75,132			380,556		
Jun	80,905			461,461		
Jul	76,850			538,311		
Aug	82,337			620,648		
Sep	77,726			698,374		
Oct	83,612			781,986		
Nov	104,098			886,084		
Dec	94,078			980,162		

See footnote(s) at end of table.

--continued

**Dairy Products: Production by Product and Month,
United States, 2004-2005 (continued)**

Product and Month	By Month			Cumulative		
	2004	2005	Change From 2004	2004	2005	Change From 2004
	<i>1,000 Gallons</i>	<i>1,000 Gallons</i>	<i>Percent</i>	<i>1,000 Gallons</i>	<i>1,000 Gallons</i>	<i>Percent</i>
Yogurt						
Jan	217,302	223,206	2.7	217,302	223,206	2.7
Feb	216,153	237,598	9.9	433,455	460,804	6.3
Mar	247,890	264,733	6.8	681,345	725,537	6.5
Apr	226,545			907,890		
May	242,139			1,150,029		
Jun	241,514			1,391,543		
Jul	212,831			1,604,374		
Aug	230,018			1,834,392		
Sep	243,742			2,078,134		
Oct	223,663			2,301,797		
Nov	193,091			2,494,888		
Dec	213,766			2,708,654		

See footnote(s) at end of table.

--continued

**Dairy Products: Production by Product and Month,
United States, 2004-2005 ¹ (continued)**

Product and Month	By Month			Cumulative		
	2004	2005	Change From 2004	2004	2005	Change From 2004
	<i>1,000 Gallons</i>	<i>1,000 Gallons</i>	<i>Percent</i>	<i>1,000 Gallons</i>	<i>1,000 Gallons</i>	<i>Percent</i>
Frozen Yogurt						
Jan	5,141	4,299	-16.4	5,141	4,299	-16.4
Feb	5,448	4,457	-18.2	10,589	8,756	-17.3
Mar	6,269	6,105	-2.6	16,858	14,861	-11.8
Apr	6,369			23,227		
May	6,148			29,375		
Jun	6,580			35,955		
Jul	5,704			41,659		
Aug	6,137			47,796		
Sep	5,753			53,549		
Oct	5,270			58,819		
Nov	4,705			63,524		
Dec	4,148			67,672		

¹ February 2005 data revised.

² Monthly 2004 data revised. January 2005 data revised.

³ Excludes all modified dry whey products.

**Total Cheese, Excluding Cottage Cheese: Production by
State and United States, March 2004-2005**

State	Mar 2004	Feb ¹ 2005	Mar 2005	Change From	
				Mar 2004	Feb 2005
	<i>1,000 Pounds</i>	<i>1,000 Pounds</i>	<i>1,000 Pounds</i>	<i>Percent</i>	<i>Percent</i>
CA	171,042	162,055	181,454	6.1	12.0
ID	55,139				
IL	8,460	7,282	8,043	-4.9	10.5
IA	13,123	12,061	13,061	-0.5	8.3
MA	46	42	66	43.5	57.1
MN	54,784	49,594	53,061	-3.1	7.0
MO	7,964	5,458	7,254	-8.9	32.9
NY	67,307	55,325	62,037	-7.8	12.1
OH	15,811	15,318	16,968	7.3	10.8
PA	35,626	29,240	37,229	4.5	27.3
SD	13,816	13,057	14,426	4.4	10.5
UT	6,092	4,349	6,165	1.2	41.8
WI	210,976	183,600	206,679	-2.0	12.6
Oth Sts ²	125,440	169,984	190,059	51.5	11.8
US	785,626	707,365	796,502	1.4	12.6
N Atlantic	120,115	97,632	116,104	-3.3	18.9
S Atlantic	3,703	3,092	3,656	-1.3	18.2
E N Central	248,173	220,148	247,462	-0.3	12.4
W N Central	92,804	83,538	91,346	-1.6	9.3
S Central	8,629	7,162	8,457	-2.0	18.1
West	312,202	295,793	329,477	5.5	11.4

¹ Revised.

² States not shown when fewer than 3 plants reported or individual plant operations could be disclosed. Percent change shown only when comparable States are included in the calculation.

American Cheese: Production by State and United States, March 2004-2005

State	Mar 2004	Feb ¹ 2005	Mar 2005	Change From	
				Mar 2004	Feb 2005
	<i>1,000 Pounds</i>	<i>1,000 Pounds</i>	<i>1,000 Pounds</i>	<i>Percent</i>	<i>Percent</i>
CA	69,718	65,694	73,908	6.0	12.5
IA	10,299	9,709	10,553	2.5	8.7
MN	52,757	46,735	50,058	-5.1	7.1
NY	7,775	5,070	6,065	-22.0	19.6
OH	2,918	2,655	3,195	9.5	20.3
OR	8,380	8,875	10,167	21.3	14.6
WI	75,183	68,454	76,500	1.8	11.8
Oth Sts ²	97,204	85,945	90,835	-6.6	5.7
US	324,234	293,137	328,632	1.4	12.1
Atlantic	13,671	10,484	11,859	-13.3	13.1
E N Central	79,072	72,007	80,558	1.9	11.9
W N Central	70,776	62,925	68,296	-3.5	8.5
S Central	4,998	3,855	5,193	3.9	34.7
West	155,717	143,866	162,726	4.5	13.1

¹ Revised.

² States not shown when fewer than 3 plants reported or individual plant operations could be disclosed. Percent change shown only when comparable States are included in the calculation.

Cheddar Cheese: Production by State and United States, March 2004-2005

State	Mar 2004	Feb ¹ 2005	Mar 2005	Change From	
				Mar 2004	Feb 2005
	<i>1,000 Pounds</i>	<i>1,000 Pounds</i>	<i>1,000 Pounds</i>	<i>Percent</i>	<i>Percent</i>
CA	44,064	43,098	46,317	5.1	7.5
MN	47,954	42,113	45,673	-4.8	8.5
NY	7,773	4,961	5,970	-23.2	20.3
WI	59,099	54,526	61,200	3.6	12.2
Oth Sts ²	101,446	92,837	106,614	5.1	14.8
US	260,336	237,535	265,774	2.1	11.9
Atlantic	13,107	9,896	11,355	-13.4	14.7
E N Cen	61,242	56,242	63,394	3.5	12.7
W N Cen	60,697	53,587	58,607	-3.4	9.4
S Cen	4,998	3,854	5,192	3.9	34.7
West	120,292	113,956	127,226	5.8	11.6

¹ Revised.

² States not shown when fewer than 3 plants reported or individual plant operations could be disclosed. Percent change shown only when comparable States are included in the calculation.

Mozzarella Cheese: Production by State and United States, March 2004-2005

State	Mar 2004	Feb ¹ 2005	Mar 2005	Change From	
				Mar 2004	Feb 2005
	<i>1,000 Pounds</i>	<i>1,000 Pounds</i>	<i>1,000 Pounds</i>	<i>Percent</i>	<i>Percent</i>
CA	77,206	72,856	80,617	4.4	10.7
NY	15,970	13,819	16,681	4.5	20.7
PA	19,978	17,003	20,301	1.6	19.4
WI	73,602	60,915	69,600	-5.4	14.3
Oth Sts ²	78,026	74,697	82,634	5.9	10.6
US	264,782	239,290	269,833	1.9	12.8
Atlantic ³	45,451	37,702	46,228	1.7	22.6
E N Central	85,617	74,170	84,679	-1.1	14.2
West	125,007	118,632	129,950	4.0	9.5

¹ Revised.

² States not shown when fewer than 3 plants reported or individual plant operations could be disclosed. Percent change shown only when comparable States are included in the calculation.

³ Region totals may not add to U.S. when compiled regions could not be disclosed.

**Cheddar Cheese: Production by Month, State, and United States,
2004 and Total 2003-04 ¹**

State	2004							
	Jan	Feb	Mar	Apr	May	Jun	Jul	Aug
	<i>1,000 Pounds</i>	<i>1,000 Pounds</i>	<i>1,000 Pounds</i>	<i>1,000 Pounds</i>	<i>1,000 Pounds</i>	<i>1,000 Pounds</i>	<i>1,000 Pounds</i>	<i>1,000 Pounds</i>
CA	47,149	43,941	44,064	50,615	47,780	43,304	44,252	40,426
IA	7,356	6,383	7,072	7,238	7,476	6,789	6,630	6,238
MN	44,109	41,760	47,954	49,301	50,406	46,785	42,843	42,503
NY	8,275	7,799	7,773	8,439	8,963	7,773	7,642	4,842
OH	2,221	1,687	2,140	2,053	2,226	2,139	2,154	1,982
WI	59,798	55,118	59,099	58,838	59,076	55,398	52,554	54,045
Oth Sts ²	90,419	80,605	92,234	87,584	96,809	87,232	86,000	87,722
US	259,327	237,293	260,336	264,068	272,736	249,420	242,075	237,758
Atlantic	13,965	13,483	13,107	14,038	17,069	11,939	12,804	10,334
E N Cen	62,023	56,807	61,242	60,896	61,305	57,540	54,714	56,031
W N Cen	56,854	52,273	60,697	62,737	64,228	59,582	53,671	53,805
S Cen	4,318	4,000	4,998	4,354	4,154	4,670	3,749	3,164
West	122,167	110,730	120,292	122,043	125,980	115,689	117,137	114,424
	2004						2003	
	Sep	Oct	Nov	Dec	Total	Plants	Total	Plants
	<i>1,000 Pounds</i>	<i>1,000 Pounds</i>	<i>1,000 Pounds</i>	<i>1,000 Pounds</i>	<i>1,000 Pounds</i>	<i>Number</i>	<i>1,000 Lbs</i>	<i>Number</i>
CA	41,814	43,791	44,344	46,838	538,318	14	523,716	20
ID							224,716	4
IA	7,017	7,083	7,020	7,448	83,750	3		
MN	40,604	44,311	42,967	46,860	540,403	9	539,832	9
NY	4,542	5,467	4,899	5,568	81,982	14	86,877	13
OH	1,850	2,055	1,727	1,921	24,155	4	26,602	4
SD							52,739	5
WI	49,939	54,309	53,621	56,987	668,782	59	648,342	59
Oth Sts ²	88,882	88,473	87,775	93,302	1,067,037	54	598,240	46
US	234,648	245,489	242,353	258,924	3,004,427	157	2,701,064	160
Atlantic	9,284	11,663	10,061	10,326	148,073	23	146,648	24
E N Cen	51,794	56,373	55,350	58,911	692,986	68	674,975	67
W N Cen	53,042	56,178	55,582	59,538	688,187	22	680,131	23
S Cen	4,747	3,949	3,805	4,829	50,737	9	51,824	9
West	115,781	117,326	117,555	125,320	1,424,444	35	1,147,486	37

¹ A plant reporting error caused a revision to cheddar and other American cheese after the release of the Dairy Products 2004 Summary. This created the need for updated tables for those two commodities. Neither total American cheese or any associated plant counts were affected in the annual publication.

² States not shown when fewer than 3 plants reported or individual plant operations could be disclosed.

**Other American Varieties of Cheese: Production by Month,
State, and United States, 2004 and Total 2003-04^{1 2}**

State	2004							
	Jan	Feb	Mar	Apr	May	Jun	Jul	Aug
	<i>1,000 Pounds</i>	<i>1,000 Pounds</i>	<i>1,000 Pounds</i>	<i>1,000 Pounds</i>	<i>1,000 Pounds</i>	<i>1,000 Pounds</i>	<i>1,000 Pounds</i>	<i>1,000 Pounds</i>
CA	23,645	22,746	25,654	21,223	22,905	23,262	23,383	25,198
ID								
MN	5,829	4,488	4,803	3,749	3,662	4,515	4,083	5,250
NY	90	2	2	118	98	103	93	110
OH	830	661	778	808	742	608	428	387
SD								
WI	15,284	15,165	16,084	15,982	15,760	15,713	16,280	16,832
Oth Sts ³	13,981	15,635	16,577	19,113	16,578	14,896	16,382	14,849
US	59,659	58,697	63,898	60,993	59,745	59,097	60,649	62,626
Atlantic	608	316	564	762	926	531	640	208
Central	28,363	26,931	27,909	27,168	26,519	26,625	28,415	28,514
West	30,688	31,450	35,425	33,063	32,300	31,941	31,594	33,904
	2004						2003	
	Sep	Oct	Nov	Dec	Total	Plants	Total	Plants
	<i>1,000 Pounds</i>	<i>1,000 Pounds</i>	<i>1,000 Pounds</i>	<i>1,000 Pounds</i>	<i>1,000 Pounds</i>	<i>Number</i>	<i>1,000 Lbs</i>	<i>Number</i>
CA	24,349	26,381	24,810	27,100	290,656	19	265,913	20
ID							256,329	3
MN	4,613	4,047	4,098	4,606	53,743	3	52,553	3
NY	137	142	116	120	1,131	4	1,389	5
OH	353	440	492	601	7,128	4	7,774	4
SD							28,623	3
WI	15,857	15,603	16,288	16,749	191,597	47	180,072	48
Oth Sts ³	14,411	17,082	14,454	16,136	190,094	36	127,939	24
US	59,720	63,695	60,258	65,312	734,349	113	920,592	110
Atlantic	553	210	521	819	6,658	10	7,121	11
Central	26,195	26,752	26,464	28,722	328,577	70	331,377	70
West	32,972	36,733	33,273	35,771	399,114	33	582,094	29

¹ Includes Colby, Monterey, and Jack.

² A plant reporting error caused a revision to cheddar and other American cheese after the release of the Dairy Products 2004 Summary. This created the need for updated tables for those two commodities. Neither total American cheese or any associated plant counts were affected in the annual publication.

³ States not shown when fewer than 3 plants reported or individual plant operations could be disclosed.

Butter: Production by State and United States, March 2004-2005

State	Mar 2004	Feb ¹ 2005	Mar 2005	Change From	
				Mar 2004	Feb 2005
	<i>1,000 Pounds</i>	<i>1,000 Pounds</i>	<i>1,000 Pounds</i>	<i>Percent</i>	<i>Percent</i>
CA	28,754	31,365	34,505	20.0	10.0
NY	2,048	1,688	1,791	-12.5	6.1
PA	6,223	6,464	6,373	2.4	-1.4
WI	22,025	30,393	31,800	44.4	4.6
Oth Sts ²	41,333	43,582	45,312	9.6	4.0
US	100,383	113,492	119,781	19.3	5.5
N Atlantic ³	11,723	11,804	11,793	0.6	-0.1
E N Central	24,272	32,757	34,378	41.6	4.9
W N Central	11,560	7,032	6,636	-42.6	-5.6
West	41,810	47,566	51,646	23.5	8.6

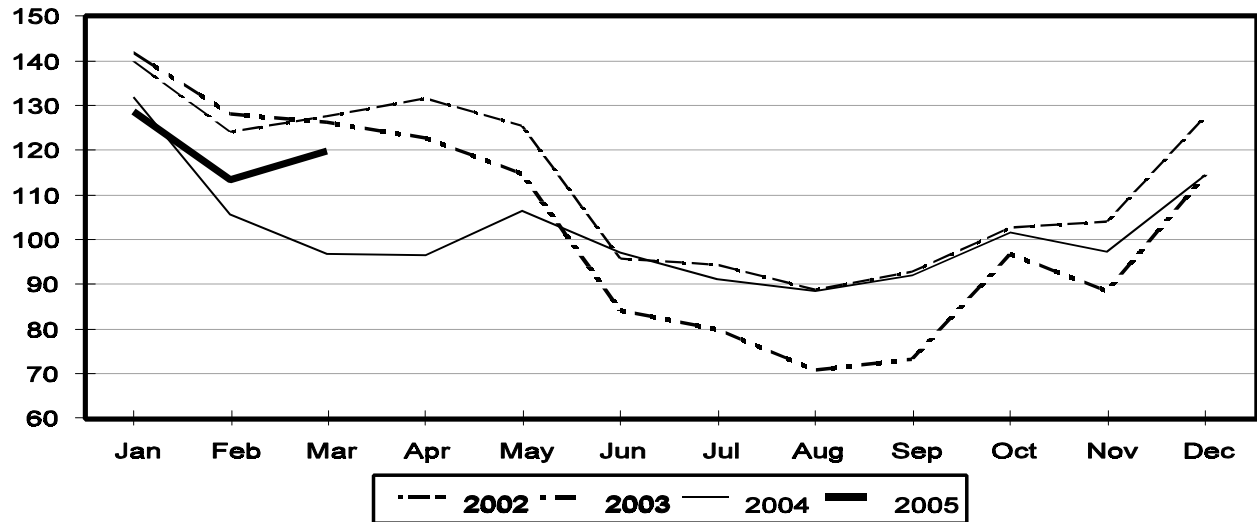
¹ Revised.

² States not shown when fewer than 3 plants reported or individual plant operations could be disclosed. Percent change shown only when comparable States are included in the calculation.

³ Region totals may not add to U.S. when compiled regions could not be disclosed.

Total Butter Production United States

Million Pounds



**Nonfat Dry Milk, Human: Production by State
and United States, March 2004-2005**

State	Mar 2004	Feb ¹ 2005	Mar 2005	Change From	
				Mar 2004	Feb 2005
	<i>1,000 Pounds</i>	<i>1,000 Pounds</i>	<i>1,000 Pounds</i>	<i>Percent</i>	<i>Percent</i>
CA	62,941	41,554	43,959	-30.2	5.8
PA	8,327	6,903	7,693	-7.6	11.4
Oth Sts ²	46,713	45,877	57,276	22.6	24.8
US	117,981	94,334	108,928	-7.7	15.5
Atlantic	11,045	14,455	15,564	40.9	7.7
E N Central	1,176	3,289	3,679	212.8	11.9
W N Central	4,622	5,219	5,912	27.9	13.3
S Central	5,305	6,928	8,659	63.2	25.0
West	95,833	64,443	75,114	-21.6	16.6

¹ Revised.

² States not shown when fewer than 3 plants reported or individual plant operations could be disclosed. Percent change shown only when comparable States are included in the calculation.

**Dry Whey, Human: Production by State
and United States, March 2004-2005**

State	Mar 2004	Feb ¹ 2005	Mar 2005	Change From	
				Mar 2004	Feb 2005
	<i>1,000 Pounds</i>	<i>1,000 Pounds</i>	<i>1,000 Pounds</i>	<i>Percent</i>	<i>Percent</i>
CA	9,074	8,953	9,361	3.2	4.6
MN		3,777	2,600		-31.2
NY	10,279	9,460	11,044	7.4	16.7
PA	9,333	7,640	9,268	-0.7	21.3
UT	1,578	1,179	2,010	27.4	70.5
WI	27,686	23,425	27,400	-1.0	17.0
Oth Sts ²	24,620	19,654	22,080	-10.3	12.3
US	82,570	74,088	83,763	1.4	13.1
Atlantic	19,612	17,100	20,312	3.6	18.8
Central	40,612	35,652	39,282	-3.3	10.2
West	22,346	21,336	24,169	8.2	13.3

¹ Revised.

² States not shown when fewer than 3 plants reported or individual plant operations could be disclosed. Percent change shown only when comparable States are included in the calculation.

Ice Cream, Hard: Production by State and United States, March 2004-2005

State	Mar 2004	Feb ¹ 2005	Mar 2005	Change From	
				Mar 2004	Feb 2005
	<i>1,000 Gallons</i>	<i>1,000 Gallons</i>	<i>1,000 Gallons</i>	<i>Percent</i>	<i>Percent</i>
CA	11,919	8,032	11,603	-2.7	44.5
FL	1,574	1,800	2,000	27.1	11.1
IL	3,340	2,751	3,325	-0.4	20.9
IN	8,521	6,435	8,280	-2.8	28.7
MD	1,758	1,488	1,759	0.1	18.2
MA	3,963	3,399	3,908	-1.4	15.0
MI	1,413	1,286	1,332	-5.7	3.6
MN	4,303	3,169	4,207	-2.2	32.8
MO	2,367	1,705	1,726	-27.1	1.2
NY	2,641	2,071	2,739	3.7	32.3
NC	1,337	1,053	1,179	-11.8	12.0
OH	2,520	1,989	2,497	-0.9	25.5
OR	1,125	803	1,128	0.3	40.5
PA	3,322	2,980	3,587	8.0	20.4
TN	1,534	1,141	1,545	0.7	35.4
TX	3,480	3,243	3,627	4.2	11.8
UT	1,815	2,019	2,390	31.7	18.4
Oth Sts ²	21,477	18,876	21,719	1.1	15.1
US	78,409	64,240	78,551	0.2	22.3
N Atlantic	12,730	11,922	14,515	14.0	21.7
S Atlantic	6,037	5,885	6,503	7.7	10.5
E N Central	16,752	13,149	16,345	-2.4	24.3
W N Central	15,016	11,750	13,161	-12.4	12.0
S Central	8,785	7,499	9,111	3.7	21.5
West	19,089	14,035	18,916	-0.9	34.8

¹ Revised.

² States not shown when fewer than 3 plants reported or individual plant operations could be disclosed. Percent change shown only when comparable States are included in the calculation.

**Canned Milk and Dry Milk Products: Manufacturers' Shipments,
and Stocks, March, 2004-2005**

Product	Mar 2004	Feb ¹ 2005	Mar 2005	Change From	
				Mar 2004	Feb 2005
	Manufacturers' Shipments²				
	<i>1,000 Pounds</i>	<i>1,000 Pounds</i>	<i>1,000 Pounds</i>	<i>Percent</i>	<i>Percent</i>
Nonfat Dry Milk, Human	123,978	87,606	101,805	-17.9	16.2
	Manufacturers' Stocks End-of-Month³				
	<i>1,000 Pounds</i>	<i>1,000 Pounds</i>	<i>1,000 Pounds</i>	<i>Percent</i>	<i>Percent</i>
Canned Evaporated and Condensed Whole Milk	49,792	40,379	43,118	-13.4	6.8
Nonfat Dry Milk, Human	80,330	78,869	85,058	5.9	7.8
Dry Buttermilk, Total	5,169	6,869	5,392	4.3	-21.5

¹ Revised.

² For dry products, shipments of bulk goods only.

³ Stocks held by manufacturers at all points and in transit.

Procedures and Reliability: Estimates included in this report are based on data provided each month by manufacturers of these products. In 32 States, the State Departments of Agriculture assist in collection of data, which eliminates duplicate reporting and reduces respondent burden. Data are collected by mail, personal and telephone interviews following the close of each month. There were 1,096 manufacturers that made one or more products in 2004. Each month, reports are generally received from all dairy plants in States with small numbers of plants. In States with large numbers of plants, survey procedures are designed to obtain monthly reports from all large plants and from a sample of small plants. Monthly estimates are based upon returns from about 70 percent of the plants which account for 70 to 90 percent of the total production of major dairy products.

Revision Policy: Monthly estimates are subject to revision the month following the preliminary estimates. Annual estimates are published in the "**Dairy Products**" report published each April which includes any revisions made to current and previous year. An attempt is made to get information from all plants for preparing these estimates

ACCESS TO REPORTS!!

For your convenience, there are several ways to obtain NASS reports, data products, and services:

INTERNET ACCESS

All NASS reports are available free of charge on the worldwide Internet. For access, connect to the Internet and go to the NASS Home Page at: www.usda.gov/nass/. Select "Today's Reports" or Publications and then Reports Calendar or Publications and then Search, by Title or Subject.

E-MAIL SUBSCRIPTION

All NASS reports are available by subscription free of charge direct to your e-mail address. Starting with the NASS Home Page at www.usda.gov/nass/, click on **Publications**, then click on the **Subscribe by E-mail** button which takes you to the page describing e-mail delivery of reports. Finally, click on **Go to the Subscription Page** and follow the instructions.

PRINTED REPORTS OR DATA PRODUCTS

CALL OUR TOLL-FREE ORDER DESK: 800-999-6779 (U.S. and Canada)
Other areas, please call 703-605-6220 FAX: 703-605-6900
(Visa, MasterCard, check, or money order acceptable for payment.)

ASSISTANCE

For **assistance** with general agricultural statistics or further information about NASS or its products or services, contact the **Agricultural Statistics Hotline** at **800-727-9540**, 7:30 a.m. to 4:00 p.m. ET, or e-mail: nass@nass.usda.gov.

The U.S. Department of Agriculture (USDA) prohibits discrimination in all its programs and activities on the basis of race, color, national origin, sex, religion, age, disability, political beliefs, sexual orientation, and marital or family status. (Not all prohibited bases apply to all programs.) Persons with disabilities who require alternative means for communication of program information (Braille, large print, audiotape, etc.) should contact USDA's TARGET Center at 202-720-2600 (voice and TDD).

To file a complaint of discrimination, write USDA, Director, Office of Civil Rights, Room 326-W, Whitten Building, 14th and Independence Avenue, SW, Washington, DC 20250-9410 or call 202-720-5964 (voice and TDD). USDA is an equal opportunity provider and employer.