

Released June 3, 2005, by the National Agricultural Statistics Service (NASS), Agricultural Statistics Board, U.S. Department of Agriculture. For information on *Dairy Products* call Ann Summa at (202) 720-3278, office hours 7:30 a.m. to 4:00 p.m. ET.

## April 2005 Highlights

**Total cheese** output (excluding cottage cheese) was 764 million pounds, 0.4 percent above April 2004 but 4.4 percent below March 2005.

**American type cheese** production totaled 331 million pounds, 1.9 percent above April 2004 but 0.1 percent below March 2005.

**Butter** production was 115 million pounds in April, 15.1 percent above April 2004 but 5.5 percent below March 2005.

**Frozen dessert:** (comparisons with April 2004)

Ice cream, Regular (hard) --- 77.7 million gallons, up 1.1 percent.

Ice cream, Lowfat (total) --- 36.1 million gallons, down 9.1 percent.

Ice cream, Nonfat (hard) --- 1.60 million gallons, down 20.3 percent.

Sherbet (hard) --- 4.91 million gallons, up 5.3 percent.

Frozen Yogurt (total) --- 5.35 million gallons, down 16.0 percent.

**Nonfat dry milk for human food:** (compared with April 2004) --- 109 million pounds, down 18.8 percent.

**Dry whey products:** (comparisons with April 2004)

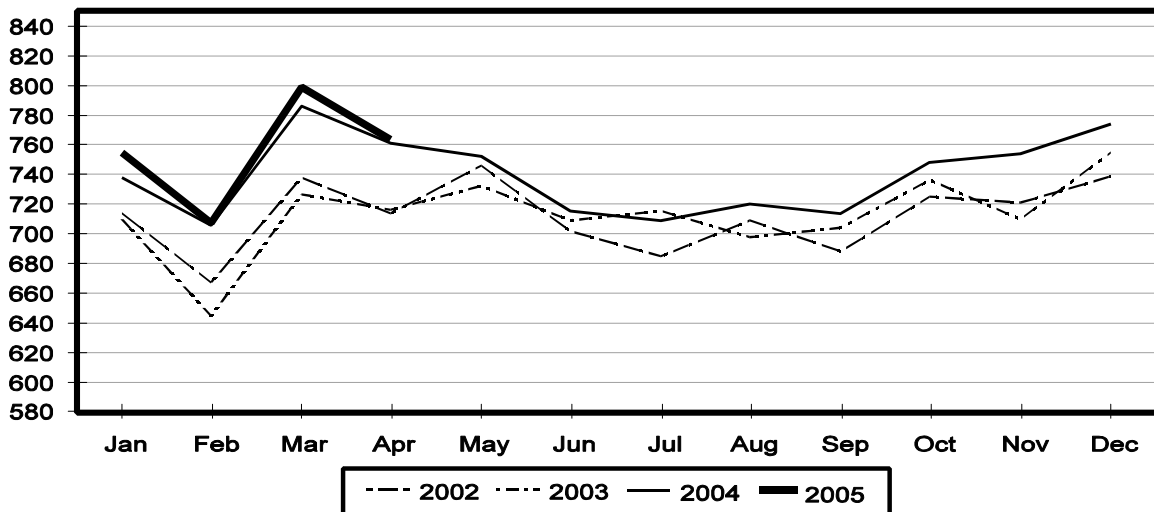
Dry whey, human --- 83.7 million pounds, down 1 percent.

Dry whey, animal --- 6.76 million pounds, down 7.7 percent.

Dry whey, total --- 90.4 million pounds, down 1.5 percent.

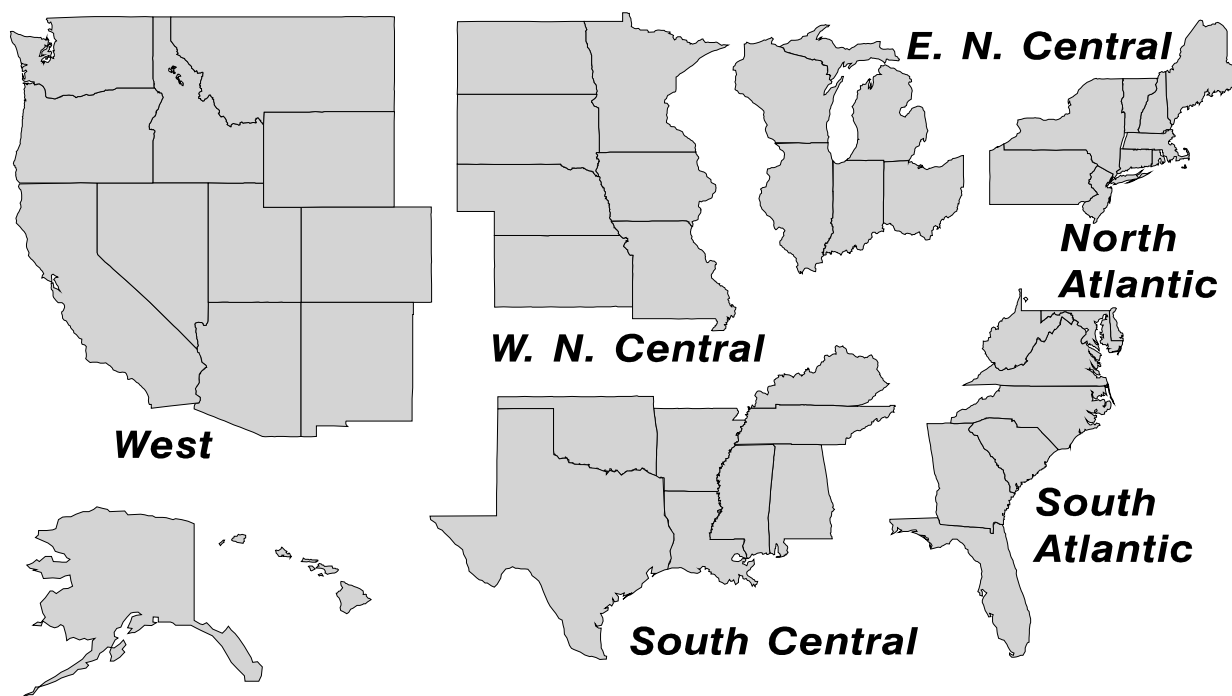
## Total Cheese Production United States

Million Pounds



## U. S. Geographic Regions Dairy Products

State totals are not published when fewer than 3 firms have reported or one firm comprises more than 60 percent of the State total. If we are not able to publish a region for confidentiality reasons, it will be combined with other regions when possible. For example, if North Atlantic can not be published, then it will be combined with South Atlantic to publish Atlantic. The West North Central and East North Central will be combined, if necessary, to form North Central. In the event that neither could be published, they may be combined with South Central to publish Central. Some tables will have only limited regions shown, therefore the regions may not add to the United States total.



## Contents

## Page

Dairy Products: Production by Product, United States, April, 2004-2005 .....	1
Whey and Modified Whey Products: Production, Stocks, and Prices, United States, April, 2004-2005 .....	2
Dairy Products: Production by Product and Month, United States, 2004-2005 .....	3
Select Commodities by State and United States, April, 2004-2005 .....	10
Canned Milk and Dry Milk Products: Manufacturer's Shipments, Stocks, and Selling Prices, April, 2004-2005 .....	15
Procedures and Reliability .....	16

**Dairy Products: Production by Product,  
United States, April, 2004-2005**

Product	Apr 2004	Mar 2005 <sup>1</sup>	Apr 2005	Change From	
				Apr 2004	Mar 2005
	<i>1,000 Pounds</i>	<i>1,000 Pounds</i>	<i>1,000 Pounds</i>	<i>Percent</i>	<i>Percent</i>
Butter	100,324	122,135	115,467	15.1	-5.5
Cheese					
American Types <sup>2</sup>	325,060	331,544	331,352	1.9	-0.1
Cheddar	264,068	268,495	265,756	0.6	-1.0
Swiss	24,422	24,088	23,488	-3.8	-2.5
Brick and Muenster	6,810	6,319	5,862	-13.9	-7.2
Cream and Neufchatel	59,807	59,691	47,349	-20.8	-20.7
Hispanic	12,133	14,708	14,094	16.2	-4.2
Mozzarella	250,697	269,487	248,761	-0.8	-7.7
Other Italian Types	59,378	71,045	65,614	10.5	-7.6
Total Italian Types	310,075	340,532	314,375	1.4	-7.7
All Other Types	22,738	22,422	27,388	20.5	22.1
Total	761,046	799,304	763,908	0.4	-4.4
Cottage Cheese, Curd <sup>3</sup>	37,720	40,967	38,540	2.2	-5.9
Cottage Cheese, Cream <sup>4</sup>	31,113	32,532	30,187	-3.0	-7.2
Cottage Cheese, Lowfat <sup>5</sup>	32,158	33,230	31,878	-0.9	-4.1
Canned Evaporated and Condensed Whole Milk	39,628	49,270	47,223	19.2	-4.2
Dry Whole Milk	5,269	2,640	3,887	-26.2	47.2
Nonfat Dry Milk, Human	134,011	109,049	108,789	-18.8	-0.2
Dry Skim Milk, Animal	438	395	319	-27.2	-19.2
Dry Buttermilk	5,154	5,782	5,403	4.8	-6.6
Sour Cream	74,707	87,189	73,497	-1.6	-15.7
Yogurt, Plain & Flavored	226,545	265,285	251,960	11.2	-5.0
	<i>1,000 Gallons</i>	<i>1,000 Gallons</i>	<i>1,000 Gallons</i>	<i>Percent</i>	<i>Percent</i>
Frozen Products					
Ice Cream, Hard	76,836	78,232	77,691	1.1	-0.7
Ice Cream, Lowfat, Hard	11,088	10,159	10,347	-6.7	1.9
Ice Cream, Lowfat, Soft	28,599	26,421	25,727	-10.0	-2.6
Ice Cream, Lowfat, Total	39,687	36,580	36,074	-9.1	-1.4
Ice Cream, Nonfat, Hard	2,009	1,670	1,602	-20.3	-4.1
Sherbet, Hard	4,665	4,915	4,911	5.3	-0.1
Water and Juice Ices	6,328	6,116	6,743	6.6	10.3
Frozen Yogurt, Total	6,369	6,010	5,353	-16.0	-10.9
Regular & Lowfat, Hard	1,893	1,683	1,631	-13.8	-3.1
Nonfat, Hard	1,007	1,075	998	-0.9	-7.2
Other Frozen Dairy Products	820	965	917	11.8	-5.0
Mix for Frozen Products					
Ice Cream Mix	44,817	42,578	43,349	-3.3	1.8
Ice Cream, Lowfat, Mix	21,031	20,274	19,981	-5.0	-1.4
Ice Cream, Nonfat, Mix	1,625	1,225	1,282	-21.1	4.7
Sherbet Mix	3,411	3,190	3,336	-2.2	4.6
Yogurt Mix	3,603	3,535	3,149	-12.6	-10.9

<sup>1</sup> Revised.

<sup>2</sup> Includes Cheddar, Colby, Monterey, and Jack.

<sup>3</sup> Mostly used for processing into cream or lowfat cottage cheese.

<sup>4</sup> Fat content 4 percent or more.

<sup>5</sup> Fat content less than 4 percent.

**Whey and Modified Whey Products: Production, Stocks,  
and Prices, United States, April, 2004-2005**

Product	Apr 2004	Mar 2005 <sup>1</sup>	Apr 2005	Change From	
				Apr 2004	Mar 2005
<b>Production</b>					
	<i>1,000 Pounds</i>	<i>1,000 Pounds</i>	<i>1,000 Pounds</i>	<i>Percent</i>	<i>Percent</i>
Condensed Whey, Solids Content <sup>2</sup>					
Sweet-Type, Human	7,193	6,567	6,520	-9.4	-0.7
Dry Whey Products					
Dry Whey, Human	84,494	83,356	83,651	-1.0	0.4
Dry Whey, Animal	7,322	8,188	6,759	-7.7	-17.5
Dry Whey, Total	91,816	91,544	90,410	-1.5	-1.2
Reduced Lactose and Minerals					
Human Food	4,353	3,608	3,661	-15.9	1.5
Animal Feed	3,583	4,347	4,913	37.1	13.0
Lactose, Human and Animal	54,308	55,909	58,062	6.9	3.9
Whey					
Protein Concentrate, Human <sup>3</sup>	25,193	26,267	26,629	5.7	1.4
Protein Concentrate, Animal <sup>3</sup>	4,597	4,483	4,782	4.0	6.7
<b>Manufacturers' Stocks End-of-Month <sup>4</sup></b>					
	<i>1,000 Pounds</i>	<i>1,000 Pounds</i>	<i>1,000 Pounds</i>	<i>Percent</i>	<i>Percent</i>
Dry Whey Products					
Dry Whey, Human	37,576	34,556	36,596	-2.6	5.9
Dry Whey, Animal	4,415	4,569	3,178	-28.0	-30.4
Reduced Lactose and Minerals					
Human and Animal <sup>5</sup>	7,460	4,312	4,194	-43.8	-2.7
Lactose, Human and Animal	57,281	64,687	62,859	9.7	-2.8
Whey Protein Concentrate, Human <sup>3</sup>	21,228	23,534	22,350	5.3	-5.0
Whey Protein Concentrate, Animal <sup>3</sup>	2,500	1,983	2,111	-15.6	6.5
<b>Manufacturers' Selling Price <sup>6</sup></b>					
	<i>Cents per Pound</i>	<i>Cents per Pound</i>	<i>Cents per Pound</i>	<i>Cents Change</i>	<i>Cents Change</i>
Dry Whey, Animal	25.6	24.0	19.4	-6.2	-4.6

<sup>1</sup> Revised.

<sup>2</sup> Final marketable product only. Does not include quantity used or shipped to another plant for further processing into dry whey or modified whey products. Does not include sweet-type, animal whey.

<sup>3</sup> Whey Protein Concentrate, 25.0 to 89.9 percent.

<sup>4</sup> Stocks held by manufacturers at all points and in transit.

<sup>5</sup> Reduced lactose and minerals stocks combined to avoid disclosure of individual operations.

<sup>6</sup> Prices for bulk goods, f.o.b. plant. Average monthly prices reported by firms.

**Dairy Products: Production by Product and Month,  
United States, 2004-2005 <sup>1</sup>**

Product and Month	By Month			Cumulative		
	2004	2005	Change From 2004	2004	2005	Change From 2004
	<i>1,000 Pounds</i>	<i>1,000 Pounds</i>	<i>Percent</i>	<i>1,000 Pounds</i>	<i>1,000 Pounds</i>	<i>Percent</i>
<b>Total Cheese</b>						
Jan	737,997	754,684	2.3	737,997	754,684	2.3
Feb	705,525	707,365	0.3	1,443,522	1,462,049	1.3
Mar	785,626	799,304	1.7	2,229,148	2,261,353	1.4
Apr	761,046	763,908	0.4	2,990,194	3,025,261	1.2
May	752,051			3,742,245		
Jun	715,332			4,457,577		
Jul	708,739			5,166,316		
Aug	719,538			5,885,854		
Sep	714,357			6,600,211		
Oct	748,044			7,348,255		
Nov	754,345			8,102,600		
Dec	773,863			8,876,463		
<b>American Cheese</b>						
Jan	318,986	322,188	1.0	318,986	322,188	1.0
Feb	295,990	293,137	-1.0	614,976	615,325	0.1
Mar	324,234	331,544	2.3	939,210	946,869	0.8
Apr	325,061	331,352	1.9	1,264,271	1,278,221	1.1
May	332,481			1,596,752		
Jun	308,517			1,905,269		
Jul	302,724			2,207,993		
Aug	300,384			2,508,377		
Sep	294,368			2,802,745		
Oct	309,184			3,111,929		
Nov	302,611			3,414,540		
Dec	324,236			3,738,776		
<b>Cheddar Cheese <sup>2</sup></b>						
Jan	259,327	261,049	0.7	259,327	261,049	0.7
Feb	237,293	237,535	0.1	496,620	498,584	0.4
Mar	260,336	268,495	3.1	756,956	767,079	1.3
Apr	264,068	265,756	0.6	1,021,024	1,032,835	1.2
May	272,736			1,293,760		
Jun	249,420			1,543,180		
Jul	242,075			1,785,255		
Aug	237,758			2,023,013		
Sep	234,648			2,257,661		
Oct	245,489			2,503,150		
Nov	242,353			2,745,503		
Dec	258,924			3,004,427		

See footnote(s) at end of table.

--continued

**Dairy Products: Production by Product and Month,  
United States, 2004-2005 <sup>1</sup> (continued)**

Product and Month	By Month			Cumulative		
	2004	2005	Change From 2004	2004	2005	Change From 2004
	<i>1,000 Pounds</i>	<i>1,000 Pounds</i>	<i>Percent</i>	<i>1,000 Pounds</i>	<i>1,000 Pounds</i>	<i>Percent</i>
Italian Cheese						
Jan	310,574	317,189	2.1	310,574	317,189	2.1
Feb	300,625	301,788	0.4	611,199	618,977	1.3
Mar	334,041	340,532	1.9	945,240	959,509	1.5
Apr	310,075	314,375	1.4	1,255,315	1,273,884	1.5
May	304,228			1,559,543		
Jun	291,946			1,851,489		
Jul	288,740			2,140,229		
Aug	296,512			2,436,741		
Sep	287,570			2,724,311		
Oct	300,981			3,025,292		
Nov	313,306			3,338,598		
Dec	321,692			3,660,290		
Mozzarella						
Jan	248,207	251,399	1.3	248,207	251,399	1.3
Feb	241,259	239,290	-0.8	489,466	490,689	0.2
Mar	264,782	269,487	1.8	754,248	760,176	0.8
Apr	250,697	248,761	-0.8	1,004,945	1,008,937	0.4
May	246,988			1,251,933		
Jun	234,934			1,486,867		
Jul	228,220			1,715,087		
Aug	232,497			1,947,584		
Sep	225,064			2,172,648		
Oct	235,938			2,408,586		
Nov	249,669			2,658,255		
Dec	258,281			2,916,536		
Other Italian						
Jan	62,367	65,790	5.5	62,367	65,790	5.5
Feb	59,366	62,498	5.3	121,733	128,288	5.4
Mar	69,259	71,045	2.6	190,992	199,333	4.4
Apr	59,378	65,614	10.5	250,370	264,947	5.8
May	57,240			307,610		
Jun	57,012			364,622		
Jul	60,520			425,142		
Aug	64,015			489,157		
Sep	62,506			551,663		
Oct	65,043			616,706		
Nov	63,637			680,343		
Dec	63,411			743,754		

See footnote(s) at end of table.

--continued

**Dairy Products: Production by Product and Month,  
United States, 2004-2005 <sup>1</sup> (continued)**

Product and Month	By Month			Cumulative		
	2004	2005	Change From 2004	2004	2005	Change From 2004
	<i>1,000 Pounds</i>	<i>1,000 Pounds</i>	<i>Percent</i>	<i>1,000 Pounds</i>	<i>1,000 Pounds</i>	<i>Percent</i>
Butter						
Jan	129,346	128,653	-0.5	129,346	128,653	-0.5
Feb	108,593	113,492	4.5	237,939	242,145	1.8
Mar	100,383	122,135	21.7	338,322	364,280	7.7
Apr	100,324	115,467	15.1	438,646	479,747	9.4
May	110,120			548,766		
Jun	99,156			647,922		
Jul	92,615			740,537		
Aug	90,329			830,866		
Sep	94,242			925,108		
Oct	104,386			1,029,494		
Nov	101,376			1,130,870		
Dec	118,808			1,249,678		
Nonfat Dry Milk, Human						
Jan	129,320	93,775	-27.5	129,320	93,775	-27.5
Feb	115,769	94,334	-18.5	245,089	188,109	-23.2
Mar	117,981	109,049	-7.6	363,070	297,158	-18.2
Apr	134,011	108,789	-18.8	497,081	405,947	-18.3
May	151,291			648,372		
Jun	144,095			792,467		
Jul	134,566			927,033		
Aug	113,617			1,040,650		
Sep	93,936			1,134,586		
Oct	94,814			1,229,400		
Nov	83,789			1,313,189		
Dec	93,201			1,406,390		
Total Dry Whey <sup>3</sup>						
Jan	86,784	86,194	-0.7	86,784	86,194	-0.7
Feb	84,585	79,884	-5.6	171,369	166,078	-3.1
Mar	92,788	91,544	-1.3	264,157	257,622	-2.5
Apr	91,816	90,410	-1.5	355,973	348,032	-2.2
May	90,215			446,188		
Jun	86,681			532,869		
Jul	83,065			615,934		
Aug	86,673			702,607		
Sep	80,239			782,846		
Oct	80,884			863,730		
Nov	83,609			947,339		
Dec	87,559			1,034,898		

See footnote(s) at end of table.

--continued



**Dairy Products: Production by Product and Month,  
United States, 2004-2005 <sup>1</sup> (continued)**

Product and Month	By Month			Cumulative		
	2004	2005	Change From 2004	2004	2005	Change From 2004
	<i>1,000 Pounds</i>	<i>1,000 Pounds</i>	<i>Percent</i>	<i>1,000 Pounds</i>	<i>1,000 Pounds</i>	<i>Percent</i>
Cream Cottage Cheese						
Jan	32,541	29,496	-9.4	32,541	29,496	-9.4
Feb	30,439	27,939	-8.2	62,980	57,435	-8.8
Mar	34,783	32,532	-6.5	97,763	89,967	-8.0
Apr	31,113	30,187	-3.0	128,876	120,154	-6.8
May	30,406			159,282		
Jun	30,862			190,144		
Jul	32,752			222,896		
Aug	33,029			255,925		
Sep	32,130			288,055		
Oct	30,838			318,893		
Nov	30,298			349,191		
Dec	28,038			377,229		
Lowfat Cottage Cheese						
Jan	32,847	29,468	-10.3	32,847	29,468	-10.3
Feb	31,469	31,520	0.2	64,316	60,988	-5.2
Mar	36,032	33,230	-7.8	100,348	94,218	-6.1
Apr	32,158	31,878	-0.9	132,506	126,096	-4.8
May	34,149			166,655		
Jun	34,236			200,891		
Jul	32,462			233,353		
Aug	33,972			267,325		
Sep	34,435			301,760		
Oct	31,112			332,872		
Nov	30,599			363,471		
Dec	27,748			391,219		
	<i>1,000 Gallons</i>	<i>1,000 Gallons</i>	<i>Percent</i>	<i>1,000 Gallons</i>	<i>1,000 Gallons</i>	<i>Percent</i>
Ice Cream, Hard						
Jan	60,148	60,440	0.5	60,148	60,440	0.5
Feb	64,848	64,240	-0.9	124,996	124,680	-0.3
Mar	78,409	78,232	-0.2	203,405	202,912	-0.2
Apr	76,836	77,691	1.1	280,241	280,603	0.1
May	74,378			354,619		
Jun	85,245			439,864		
Jul	77,886			517,750		
Aug	73,697			591,447		
Sep	70,776			662,223		
Oct	68,134			730,357		
Nov	59,116			789,473		
Dec	55,193			844,666		

See footnote(s) at end of table.

--continued

**Dairy Products: Production by Product and Month,  
United States, 2004-2005 <sup>1</sup> (continued)**

Product and Month	By Month			Cumulative		
	2004	2005	Change From 2004	2004	2005	Change From 2004
	<i>1,000 Gallons</i>	<i>1,000 Gallons</i>	<i>Percent</i>	<i>1,000 Gallons</i>	<i>1,000 Gallons</i>	<i>Percent</i>
<b>Ice Cream, Lowfat</b>						
Jan	26,381	27,079	2.6	26,381	27,079	2.6
Feb	28,440	28,083	-1.3	54,821	55,162	0.6
Mar	37,856	36,580	-3.4	92,677	91,742	-1.0
Apr	39,687	36,074	-9.1	132,364	127,816	-3.4
May	38,796			171,160		
Jun	41,920			213,080		
Jul	42,430			255,510		
Aug	39,329			294,839		
Sep	34,495			329,334		
Oct	31,233			360,567		
Nov	27,363			387,930		
Dec	27,544			415,474		
<b>Ice Cream, NF, Hard</b>						
Jan	1,359	1,164	-14.3	1,359	1,164	-14.3
Feb	1,462	1,619	10.7	2,821	2,783	-1.3
Mar	1,669	1,670	0.1	4,490	4,453	-0.8
Apr	2,009	1,602	-20.3	6,499	6,055	-6.8
May	1,757			8,256		
Jun	1,904			10,160		
Jul	1,725			11,885		
Aug	1,708			13,593		
Sep	1,455			15,048		
Oct	1,630			16,678		
Nov	1,118			17,796		
Dec	1,281			19,077		
<b>Sherbet, Hard</b>						
Jan	3,558	4,194	17.9	3,558	4,194	17.9
Feb	3,837	4,116	7.3	7,395	8,310	12.4
Mar	5,295	4,915	-7.2	12,690	13,225	4.2
Apr	4,665	4,911	5.3	17,355	18,136	4.5
May	4,714			22,069		
Jun	5,602			27,671		
Jul	4,700			32,371		
Aug	4,690			37,061		
Sep	4,214			41,275		
Oct	3,638			44,913		
Nov	3,434			48,347		
Dec	2,920			51,267		

See footnote(s) at end of table.

--continued

**Dairy Products: Production by Product and Month,  
United States, 2004-2005 (continued)**

Product and Month	By Month			Cumulative		
	2004	2005	Change From 2004	2004	2005	Change From 2004
	<i>1,000 Gallons</i>	<i>1,000 Gallons</i>	<i>Percent</i>	<i>1,000 Gallons</i>	<i>1,000 Gallons</i>	<i>Percent</i>
Sour Cream						
Jan	75,950	76,883	1.2	75,950	76,883	1.2
Feb	69,869	75,324	7.8	145,819	152,207	4.4
Mar	84,898	87,189	2.7	230,717	239,396	3.8
Apr	74,707	73,497	-1.6	305,424	312,893	2.4
May	75,132			380,556		
Jun	80,905			461,461		
Jul	76,850			538,311		
Aug	82,337			620,648		
Sep	77,726			698,374		
Oct	83,612			781,986		
Nov	104,098			886,084		
Dec	94,078			980,162		

See footnote(s) at end of table.

--continued

**Dairy Products: Production by Product and Month,  
United States, 2004-2005 (continued)**

Product and Month	By Month			Cumulative		
	2004	2005	Change From 2004	2004	2005	Change From 2004
	<i>1,000 Gallons</i>	<i>1,000 Gallons</i>	<i>Percent</i>	<i>1,000 Gallons</i>	<i>1,000 Gallons</i>	<i>Percent</i>
Yogurt						
Jan	217,302	223,206	2.7	217,302	223,206	2.7
Feb	216,153	237,598	9.9	433,455	460,804	6.3
Mar	247,890	265,285	7.0	681,345	726,089	6.6
Apr	226,545	251,960	11.2	907,890	978,049	7.7
May	242,139			1,150,029		
Jun	241,514			1,391,543		
Jul	212,831			1,604,374		
Aug	230,018			1,834,392		
Sep	243,742			2,078,134		
Oct	223,663			2,301,797		
Nov	193,091			2,494,888		
Dec	213,766			2,708,654		

See footnote(s) at end of table.

--continued

**Dairy Products: Production by Product and Month,  
United States, 2004-2005 <sup>1</sup> (continued)**

Product and Month	By Month			Cumulative		
	2004	2005	Change From 2004	2004	2005	Change From 2004
	<i>1,000 Gallons</i>	<i>1,000 Gallons</i>	<i>Percent</i>	<i>1,000 Gallons</i>	<i>1,000 Gallons</i>	<i>Percent</i>
Frozen Yogurt						
Jan	5,141	4,299	-16.4	5,141	4,299	-16.4
Feb	5,448	4,457	-18.2	10,589	8,756	-17.3
Mar	6,269	6,010	-4.1	16,858	14,766	-12.4
Apr	6,369	5,353	-16.0	23,227	20,119	-13.4
May	6,148			29,375		
Jun	6,580			35,955		
Jul	5,704			41,659		
Aug	6,137			47,796		
Sep	5,753			53,549		
Oct	5,270			58,819		
Nov	4,705			63,524		
Dec	4,148			67,672		

<sup>1</sup> March 2005 data revised.

<sup>2</sup> Monthly 2004 data revised. January 2005 data revised.

<sup>3</sup> Excludes all modified dry whey products.

**Total Cheese, Excluding Cottage Cheese: Production by  
State and United States, April 2004-2005**

State	Apr 2004	Mar <sup>1</sup> 2005	Apr 2005	Change From	
				Apr 2004	Mar 2005
	<i>1,000 Pounds</i>	<i>1,000 Pounds</i>	<i>1,000 Pounds</i>	<i>Percent</i>	<i>Percent</i>
CA	168,961	181,389	182,373	7.9	0.5
ID	59,440				
IL	8,190	8,043	7,640	-6.7	-5.0
IA	13,397	13,529	13,399		-1.0
MA	87	66	44	-49.4	-33.3
MN	55,209	55,596	54,351	-1.6	-2.2
MO	8,645	7,254	7,473	-13.6	3.0
NY	59,843	62,055	55,333	-7.5	-10.8
OH	15,066	16,920	15,605	3.6	-7.8
PA	32,910	37,229	32,963	0.2	-11.5
SD	13,084	14,511	14,355	9.7	-1.1
UT	6,697	6,165	5,933	-11.4	-3.8
WI	200,375	206,489	194,009	-3.2	-6.0
Oth Sts <sup>2</sup>	119,142	190,058	180,430	51.4	-5.1
US	761,046	799,304	763,908	0.4	-4.4
N Atlantic	109,042	116,121	103,042	-5.5	-11.3
S Atlantic	3,250	3,656	3,297	1.4	-9.8
E N Central	238,929	247,224	230,955	-3.3	-6.6
W N Central	93,290	94,434	93,390	0.1	-1.1
S Central	7,649	8,457	7,434	-2.8	-12.1
West	308,886	329,412	325,790	5.5	-1.1

<sup>1</sup> Revised.

<sup>2</sup> States not shown when fewer than 3 plants reported or individual plant operations could be disclosed. Percent change shown only when comparable States are included in the calculation.

**American Cheese: Production by State and United States, April 2004-2005**

State	Apr 2004	Mar <sup>1</sup> 2005	Apr 2005	Change From	
				Apr 2004	Mar 2005
	<i>1,000 Pounds</i>	<i>1,000 Pounds</i>	<i>1,000 Pounds</i>	<i>Percent</i>	<i>Percent</i>
CA	71,838	73,908	73,853	2.8	-0.1
IA	10,674	10,898	10,826	1.4	-0.7
MN	53,050	52,642	50,969	-3.9	-3.2
NY	8,557	6,066	8,811	3.0	45.3
OH	2,861	3,175	3,130	9.4	-1.4
OR	8,243	10,167	10,133	22.9	-0.3
WI	74,820	76,500	74,320	-0.7	-2.8
Oth Sts <sup>2</sup>	95,003	98,188	99,310	4.5	1.1
US	325,060	331,544	331,352	1.9	-0.1
Atlantic	14,800	11,860	15,545	5.0	31.1
E N Central	78,991	80,538	78,733	-0.3	-2.2
W N Central	71,809	71,227	69,546	-3.2	-2.4
S Central	4,355	5,193	4,192	-3.7	-19.3
West	155,105	162,726	163,336	5.3	0.4

<sup>1</sup> Revised.

<sup>2</sup> States not shown when fewer than 3 plants reported or individual plant operations could be disclosed. Percent change shown only when comparable States are included in the calculation.

**Cheddar Cheese: Production by State and United States, April 2004-2005**

State	Apr 2004	Mar <sup>1</sup> 2005	Apr 2005	Change From	
				Apr 2004	Mar 2005
	<i>1,000 Pounds</i>	<i>1,000 Pounds</i>	<i>1,000 Pounds</i>	<i>Percent</i>	<i>Percent</i>
CA	50,615	46,317	45,901	-9.3	-0.9
MN	49,301	48,346	46,165	-6.4	-4.5
NY	8,439	5,970	8,711	3.2	45.9
WI	58,838	61,200	59,800	1.6	-2.3
Oth Sts <sup>2</sup>	87,584	106,662	105,179	20.1	-1.4
US	264,068	268,495	265,756	0.6	-1.0
Atlantic	14,038	11,355	14,673	4.5	29.2
E N Cen	60,896	63,402	62,038	1.9	-2.2
W N Cen	62,737	61,320	59,487	-5.2	-3.0
S Cen	4,354	5,192	4,191	-3.7	-19.3
West	122,043	127,226	125,367	2.7	-1.5

<sup>1</sup> Revised.

<sup>2</sup> States not shown when fewer than 3 plants reported or individual plant operations could be disclosed. Percent change shown only when comparable States are included in the calculation.

**Mozzarella Cheese: Production by State and United States, April 2004-2005**

State	Apr 2004	Mar <sup>1</sup> 2005	Apr 2005	Change From	
				Apr 2004	Mar 2005
	<i>1,000 Pounds</i>	<i>1,000 Pounds</i>	<i>1,000 Pounds</i>	<i>Percent</i>	<i>Percent</i>
CA	74,941	80,612	77,214	3.0	-4.2
NY	15,796	16,681	15,080	-4.5	-9.6
PA	18,336	20,301	20,151	9.9	-0.7
WI	66,160	69,310	62,700	-5.2	-9.5
Oth Sts <sup>2</sup>	75,464	82,583	73,616	-2.4	-10.9
US	250,697	269,487	248,761	-0.8	-7.7
Atlantic <sup>3</sup>	42,225	46,227	42,032	-0.5	-9.1
E N Central	80,007	84,389	75,199	-6.0	-10.9
West	121,122	129,945	122,540	1.2	-5.7

<sup>1</sup> Revised.

<sup>2</sup> States not shown when fewer than 3 plants reported or individual plant operations could be disclosed. Percent change shown only when comparable States are included in the calculation.

<sup>3</sup> Region totals may not add to U.S. when compiled regions could not be disclosed.

**Butter: Production by State and United States, April 2004-2005**

State	Apr 2004	Mar <sup>1</sup> 2005	Apr 2005	Change From	
				Apr 2004	Mar 2005
	<i>1,000 Pounds</i>	<i>1,000 Pounds</i>	<i>1,000 Pounds</i>	<i>Percent</i>	<i>Percent</i>
CA	31,328	34,505	32,839	4.8	-4.8
NY	2,179	1,788	1,779	-18.4	-0.5
PA	6,369	6,373	6,439	1.1	1.0
WI	18,414	34,067	31,410	70.6	-7.8
Oth Sts <sup>2</sup>	42,034	45,402	43,000	2.3	-5.3
US	100,324	122,135	115,467	15.1	-5.5
N Atlantic <sup>3</sup>	12,644	11,790	11,853	-6.3	0.5
E N Central	20,801	36,645	33,768	62.3	-7.9
W N Central	11,507	6,636	6,857	-40.4	3.3
West	43,803	51,646	49,148	12.2	-4.8

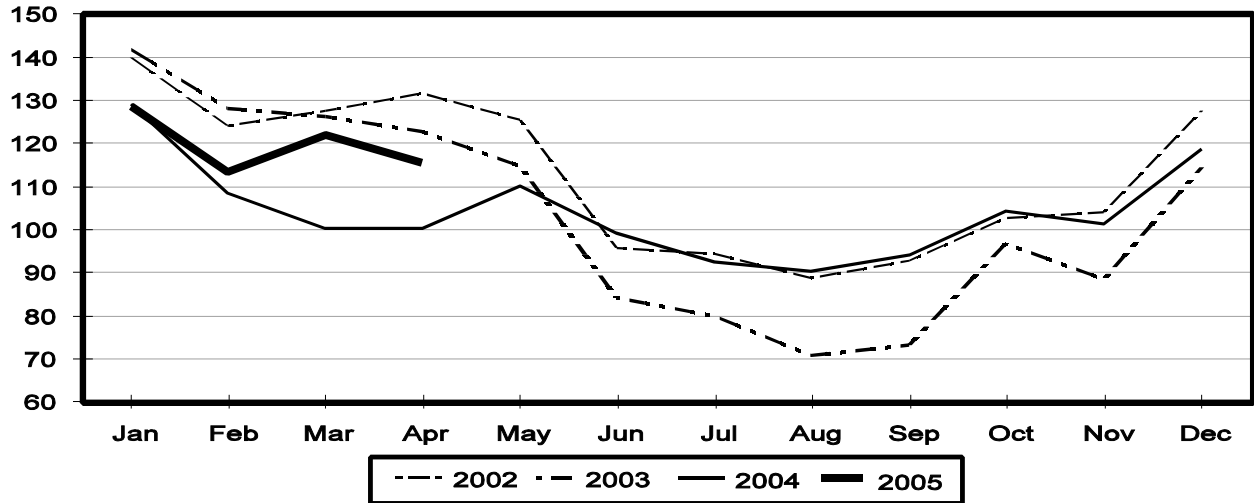
<sup>1</sup> Revised.

<sup>2</sup> States not shown when fewer than 3 plants reported or individual plant operations could be disclosed. Percent change shown only when comparable States are included in the calculation.

<sup>3</sup> Region totals may not add to U.S. when compiled regions could not be disclosed.

## Total Butter Production United States

Million Pounds





**Nonfat Dry Milk, Human: Production by State  
and United States, April 2004-2005**

State	Apr 2004	Mar <sup>1</sup> 2005	Apr 2005	Change From	
				Apr 2004	Mar 2005
	<i>1,000 Pounds</i>	<i>1,000 Pounds</i>	<i>1,000 Pounds</i>	<i>Percent</i>	<i>Percent</i>
CA	66,101	43,959	38,645	-41.5	-12.1
PA	9,744	7,693	7,725	-20.7	0.4
Oth Sts <sup>2</sup>	58,166	57,397	62,419	7.3	8.7
US	134,011	109,049	108,789	-18.8	-0.2
Atlantic	18,458	15,564	19,658	6.5	26.3
E N Central	2,921	3,737	6,089	108.5	62.9
W N Central	5,147	5,912	6,522	26.7	10.3
S Central	6,287	8,722	9,282	47.6	6.4
West	101,198	75,114	67,238	-33.6	-10.5

<sup>1</sup> Revised.

<sup>2</sup> States not shown when fewer than 3 plants reported or individual plant operations could be disclosed. Percent change shown only when comparable States are included in the calculation.

**Dry Whey, Human: Production by State  
and United States, April 2004-2005**

State	Apr 2004	Mar <sup>1</sup> 2005	Apr 2005	Change From	
				Apr 2004	Mar 2005
	<i>1,000 Pounds</i>	<i>1,000 Pounds</i>	<i>1,000 Pounds</i>	<i>Percent</i>	<i>Percent</i>
CA	10,978	9,361	10,264	-6.5	9.6
MN		3,340	4,122		23.4
NY	10,337	11,044	10,899	5.4	-1.3
PA	9,019	9,268	9,050	0.3	-2.4
UT	1,658	2,010	2,456	48.1	22.2
WI	26,000	26,253	24,641	-5.2	-6.1
Oth Sts <sup>2</sup>	26,502	22,080	22,219	-16.2	0.6
US	84,494	83,356	83,651	-1.0	0.4
Atlantic	19,356	20,312	19,949	3.1	-1.8
Central	40,744	38,875	37,950	-6.9	-2.4
West	24,394	24,169	25,752	5.6	6.5

<sup>1</sup> Revised.

<sup>2</sup> States not shown when fewer than 3 plants reported or individual plant operations could be disclosed. Percent change shown only when comparable States are included in the calculation.

**Ice Cream, Hard: Production by State and United States, April 2004-2005**

State	Apr 2004	Mar <sup>1</sup> 2005	Apr 2005	Change From	
				Apr 2004	Mar 2005
	<i>1,000 Gallons</i>	<i>1,000 Gallons</i>	<i>1,000 Gallons</i>	<i>Percent</i>	<i>Percent</i>
CA	10,310	11,607	10,838	5.1	-6.6
FL	1,733	1,800	1,800	3.9	
IL	3,696	3,325	3,200	-13.4	-3.8
IN	8,030	8,280	8,601	7.1	3.9
MD	1,782	1,759	1,782		1.3
MA	5,401	3,908	5,187	-4.0	32.7
MI	1,379	1,332	1,390	0.8	4.4
MN	3,194	4,207	3,649	14.2	-13.3
MO	1,964	1,726	2,314	17.8	34.1
NY	2,816	2,739	2,765	-1.8	0.9
NC	1,528	1,180	1,159	-24.1	-1.8
OH	2,330	2,497	2,154	-7.6	-13.7
OR	1,322	1,077	1,297	-1.9	20.4
PA	3,121	3,587	3,664	17.4	2.1
TN	1,562	1,602	1,571	0.6	-1.9
TX	3,669	3,624	3,176	-13.4	-12.4
UT	2,442	2,390	2,162	-11.5	-9.5
Oth Sts <sup>2</sup>	20,557	21,592	20,980	2.1	-2.8
US	76,836	78,232	77,691	1.1	-0.7
N Atlantic	14,339	14,515	15,534	8.3	7.0
S Atlantic	6,389	6,304	6,226	-2.6	-1.2
E N Central	16,473	16,345	16,193	-1.7	-0.9
W N Central	12,119	13,161	12,952	6.9	-1.6
S Central	9,197	9,164	8,526	-7.3	-7.0
West	18,319	18,743	18,260	-0.3	-2.6

<sup>1</sup> Revised.

<sup>2</sup> States not shown when fewer than 3 plants reported or individual plant operations could be disclosed. Percent change shown only when comparable States are included in the calculation.

**Canned Milk and Dry Milk Products: Manufacturers' Shipments,  
and Stocks, April, 2004-2005**

Product	Apr 2004	Mar 2005 <sup>1</sup>	Apr 2005	Change From	
				Apr 2004	Mar 2005
	<b>Manufacturers' Shipments <sup>2</sup></b>				
	<i>1,000 Pounds</i>	<i>1,000 Pounds</i>	<i>1,000 Pounds</i>	<i>Percent</i>	<i>Percent</i>
Nonfat Dry Milk, Human	112,902	102,329	92,914	-17.7	-9.2
	<b>Manufacturers' Stocks End-of-Month <sup>3</sup></b>				
	<i>1,000 Pounds</i>	<i>1,000 Pounds</i>	<i>1,000 Pounds</i>	<i>Percent</i>	<i>Percent</i>
Canned Evaporated and Condensed Whole Milk	50,755	43,824	54,438	7.3	24.2
Nonfat Dry Milk, Human	104,241	84,080	108,115	3.7	28.6
Dry Buttermilk, Total	4,378	5,574	8,849	102.1	58.8

<sup>1</sup> Revised.

<sup>2</sup> For dry products, shipments of bulk goods only.

<sup>3</sup> Stocks held by manufacturers at all points and in transit.

**Procedures and Reliability:** Estimates included in this report are based on data provided each month by manufacturers of these products. In 32 States, the State Departments of Agriculture assist in collection of data, which eliminates duplicate reporting and reduces respondent burden. Data are collected by mail, personal and telephone interviews following the close of each month. There were 1,096 manufacturers that made one or more products in 2004. Each month, reports are generally received from all dairy plants in States with small numbers of plants. In States with large numbers of plants, survey procedures are designed to obtain monthly reports from all large plants and from a sample of small plants. Monthly estimates are based upon returns from about 70 percent of the plants which account for 70 to 90 percent of the total production of major dairy products.

**Revision Policy:** Monthly estimates are subject to revision the month following the preliminary estimates. Annual estimates are published in the "**Dairy Products**" report published each April which includes any revisions made to current and previous year. An attempt is made to get information from all plants for preparing these estimates

## ACCESS TO REPORTS!!

---

For your convenience, there are several ways to obtain NASS reports, data products, and services:

### INTERNET ACCESS

All NASS reports are available free of charge on the worldwide Internet. For access, connect to the Internet and go to the NASS Home Page at: [www.usda.gov/nass/](http://www.usda.gov/nass/). Select "Today's Reports" or Publications and then Reports Calendar or Publications and then Search, by Title or Subject.

### E-MAIL SUBSCRIPTION

All NASS reports are available by subscription free of charge direct to your e-mail address. Starting with the NASS Home Page at [www.usda.gov/nass/](http://www.usda.gov/nass/), click on **Publications**, then click on the **Subscribe by E-mail** button which takes you to the page describing e-mail delivery of reports. Finally, click on **Go to the Subscription Page** and follow the instructions.

-----

### PRINTED REPORTS OR DATA PRODUCTS

**CALL OUR TOLL-FREE ORDER DESK: 800-999-6779 (U.S. and Canada)**  
**Other areas, please call 703-605-6220      FAX: 703-605-6900**  
**(Visa, MasterCard, check, or money order acceptable for payment.)**

-----

### ASSISTANCE

For **assistance** with general agricultural statistics or further information about NASS or its products or services, contact the **Agricultural Statistics Hotline** at **800-727-9540**, 7:30 a.m. to 4:00 p.m. ET, or e-mail: [nass@nass.usda.gov](mailto:nass@nass.usda.gov).

The U.S. Department of Agriculture (USDA) prohibits discrimination in all its programs and activities on the basis of race, color, national origin, sex, religion, age, disability, political beliefs, sexual orientation, and marital or family status. (Not all prohibited bases apply to all programs.) Persons with disabilities who require alternative means for communication of program information (Braille, large print, audiotape, etc.) should contact USDA's TARGET Center at 202-720-2600 (voice and TDD).

To file a complaint of discrimination, write USDA, Director, Office of Civil Rights, Room 326-W, Whitten Building, 14th and Independence Avenue, SW, Washington, DC 20250-9410 or call 202-720-5964 (voice and TDD). USDA is an equal opportunity provider and employer.