

Released July 1, 2005, by the National Agricultural Statistics Service (NASS), Agricultural Statistics Board, U.S. Department of Agriculture. For information on *Dairy Products* call Ann Summa at (202) 720-3278, office hours 7:30 a.m. to 4:00 p.m. ET.

## May 2005 Highlights

**Total cheese** output (excluding cottage cheese) was 782 million pounds, 4.0 percent above May 2004 and 3.4 percent above April 2005.

**American type cheese** production totaled 333 million pounds, 0.3 percent above May 2004 and 1.5 percent above April 2005.

**Butter** production was 120 million pounds in May, 9.2 percent above May 2004 and 4.0 percent above April 2005.

**Frozen dessert:** (comparisons with May 2004)

Ice cream, Regular (hard) --- 78.4 million gallons, up 5.4 percent.

Ice cream, Lowfat (total) --- 36.2 million gallons, down 6.8 percent.

Ice cream, Nonfat (hard) --- 1.82 million gallons, up 3.8 percent.

Sherbet (hard) --- 4.92 million gallons, up 4.3 percent.

Frozen Yogurt (total) --- 6.13 million gallons, down slightly.

**Nonfat dry milk for human food:** (compared with May 2004) --- 123 million pounds, down 19.0 percent.

**Dry whey products:** (comparisons with May 2004)

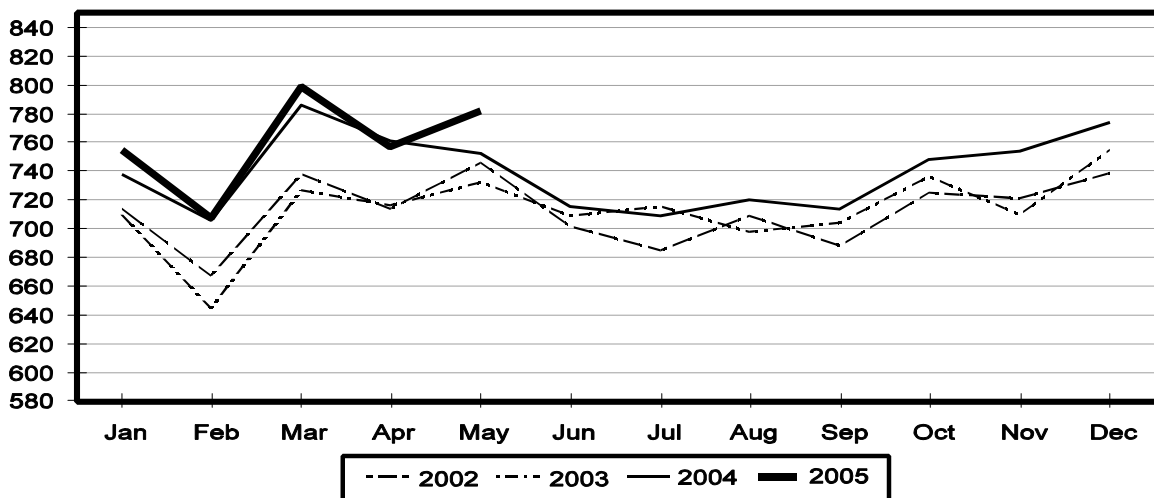
Dry whey, human --- 85.7 million pounds, up 4.0 percent.

Dry whey, animal --- 7.47 million pounds, down 4.1 percent.

Dry whey, total --- 93.2 million pounds, up 3.3 percent.

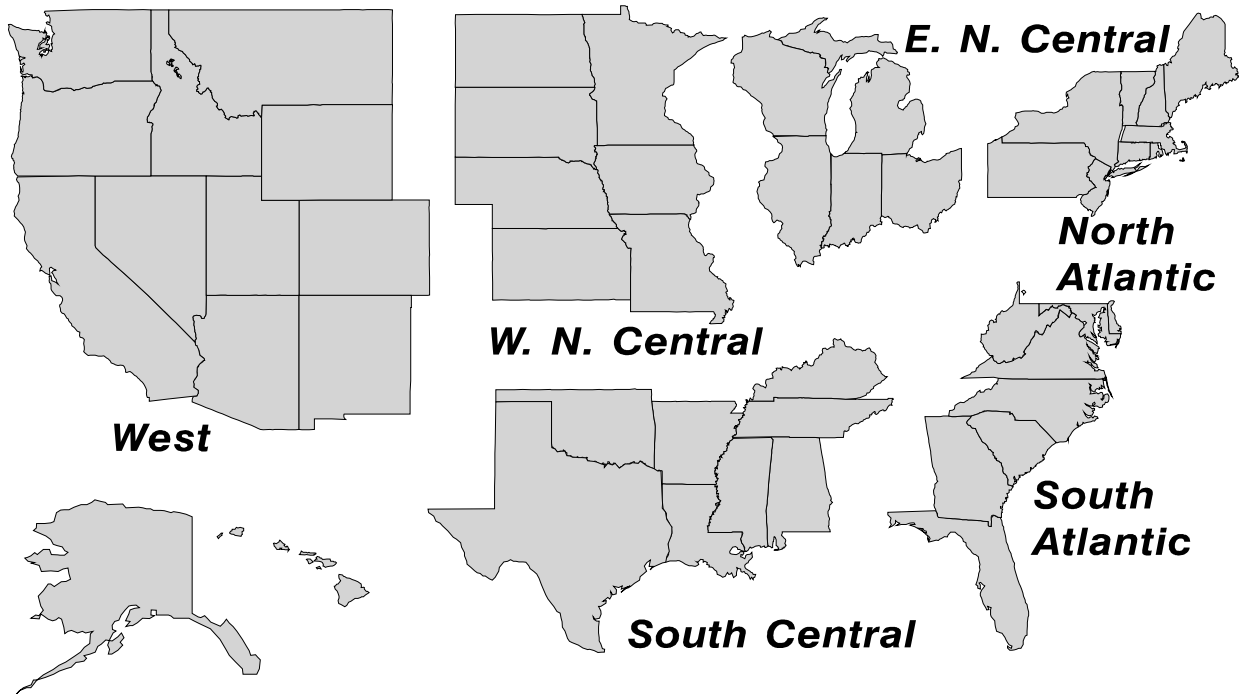
## Total Cheese Production United States

Million Pounds



## U. S. Geographic Regions Dairy Products

State totals are not published when fewer than 3 firms have reported or one firm comprises more than 60 percent of the State total. If we are not able to publish a region for confidentiality reasons, it will be combined with other regions when possible. For example, if North Atlantic can not be published, then it will be combined with South Atlantic to publish Atlantic. The West North Central and East North Central will be combined, if necessary, to form North Central. In the event that neither could be published, they may be combined with South Central to publish Central. Some tables will have only limited regions shown, therefore the regions may not add to the United States total.



## Contents

## Page

Dairy Products: Production by Product, United States, May, 2004-2005 .....	1
Whey and Modified Whey Products: Production, Stocks, and Prices, United States, May, 2004-2005 .....	2
Dairy Products: Production by Product and Month, United States, 2004-2005 .....	3
Select Commodities by State and United States, May, 2004-2005 .....	10
Canned Milk and Dry Milk Products: Manufacturer's Shipments, Stocks, and Selling Prices, May, 2004-2005 .....	15
Procedures and Reliability .....	16

**Dairy Products: Production by Product,  
United States, May, 2004-2005**

Product	May 2004	Apr 2005 <sup>1</sup>	May 2005	Change From	
				May 2004	Apr 2005
	<i>1,000 Pounds</i>	<i>1,000 Pounds</i>	<i>1,000 Pounds</i>	<i>Percent</i>	<i>Percent</i>
Butter	110,120	115,659	120,295	9.2	4.0
Cheese					
American Types <sup>2</sup>	332,481	328,413	333,375	0.3	1.5
Cheddar <sup>3</sup>	272,736	263,046	267,154	-2.0	1.6
Swiss	24,438	23,766	25,500	4.3	7.3
Brick and Muenster	6,237	5,862	5,895	-5.5	0.6
Cream and Neufchatel	49,922	44,027	48,201	-3.4	9.5
Hispanic	10,676	14,038	13,663	28.0	-2.7
Mozzarella	246,988	248,480	262,444	6.3	5.6
Other Italian Types	57,240	64,914	66,342	15.9	2.2
Total Italian Types	304,228	313,394	328,786	8.1	4.9
All Other Types	24,069	27,408	27,051	12.4	-1.3
Total	752,050	756,908	782,471	4.0	3.4
Cottage Cheese, Curd <sup>4</sup>	35,615	39,164	39,139	9.9	-0.1
Cottage Cheese, Cream <sup>5</sup>	30,406	30,437	31,477	3.5	3.4
Cottage Cheese, Lowfat <sup>6</sup>	34,149	32,589	34,925	2.3	7.2
Canned Evaporated and Condensed Whole Milk	47,938	47,223	46,033	-4.0	-2.5
Dry Whole Milk	3,155	4,155	3,144	-0.3	-24.3
Nonfat Dry Milk, Human	151,291	111,223	122,504	-19.0	10.1
Dry Skim Milk, Animal	502	335	707	40.8	111.0
Dry Buttermilk	5,573	5,369	5,172	-7.2	-3.7
Sour Cream	75,132	72,041	84,750	12.8	17.6
Yogurt, Plain & Flavored	242,139	251,984	261,919	8.2	3.9
	<i>1,000 Gallons</i>	<i>1,000 Gallons</i>	<i>1,000 Gallons</i>	<i>Percent</i>	<i>Percent</i>
Frozen Products					
Ice Cream, Hard	74,378	77,426	78,398	5.4	1.3
Ice Cream, Lowfat, Hard	10,173	9,982	9,967	-2.0	-0.2
Ice Cream, Lowfat, Soft	28,623	25,719	26,203	-8.5	1.9
Ice Cream, Lowfat, Total	38,796	35,701	36,170	-6.8	1.3
Ice Cream, Nonfat, Hard	1,757	1,642	1,823	3.8	11.0
Sherbet, Hard	4,714	5,047	4,919	4.3	-2.5
Water and Juice Ices	6,623	6,603	6,735	1.7	2.0
Frozen Yogurt, Total	6,148	5,345	6,132	-0.3	14.7
Regular & Lowfat, Hard	1,631	1,631	1,808	10.9	10.9
Nonfat, Hard	893	980	1,060	18.7	8.2
Other Frozen Dairy Products	809	917	942	16.4	2.7
Mix for Frozen Products					
Ice Cream Mix	43,536	44,335	45,183	3.8	1.9
Ice Cream, Lowfat, Mix	20,982	19,784	20,050	-4.4	1.3
Ice Cream, Nonfat, Mix	1,354	1,303	1,293	-4.5	-0.8
Sherbet Mix	3,351	3,688	3,521	5.1	-4.5
Yogurt Mix	3,790	3,144	3,607	-4.8	14.7

<sup>1</sup> Revised.

<sup>2</sup> Includes Cheddar, Colby, Monterey, and Jack.

<sup>3</sup> Revised 2004 Cheddar Cheese data released in the May 5, 2005 Dairy Products Report.

<sup>4</sup> Mostly used for processing into cream or lowfat cottage cheese.

<sup>5</sup> Fat content 4 percent or more.

<sup>6</sup> Fat content less than 4 percent.

**Whey and Modified Whey Products: Production, Stocks,  
and Prices, United States, May, 2004-2005**

Product	May 2004	Apr 2005 <sup>1</sup>	May 2005	Change From	
				May 2004	Apr 2005
<b>Production</b>					
	<i>1,000 Pounds</i>	<i>1,000 Pounds</i>	<i>1,000 Pounds</i>	<i>Percent</i>	<i>Percent</i>
Condensed Whey, Solids Content <sup>2</sup> Sweet-Type, Human	8,310	6,520	7,431	-10.6	14.0
Dry Whey Products					
Dry Whey, Human	82,423	83,715	85,690	4.0	2.4
Dry Whey, Animal	7,792	7,243	7,470	-4.1	3.1
Dry Whey, Total	90,215	90,958	93,160	3.3	2.4
Reduced Lactose and Minerals					
Human Food	3,015	3,661	3,948	30.9	7.8
Animal Feed	3,787	4,913	4,313	13.9	-12.2
Lactose, Human and Animal	58,001	58,222	57,751	-0.4	-0.8
Whey					
Protein Concentrate, Human <sup>3</sup>	24,763	27,166	26,072	5.3	-4.0
Protein Concentrate, Animal <sup>3</sup>	4,702	4,752	4,172	-11.3	-12.2
<b>Manufacturers' Stocks End-of-Month <sup>4</sup></b>					
	<i>1,000 Pounds</i>	<i>1,000 Pounds</i>	<i>1,000 Pounds</i>	<i>Percent</i>	<i>Percent</i>
Dry Whey Products					
Dry Whey, Human	39,408	36,982	36,524	-7.3	-1.2
Dry Whey, Animal	5,558	3,690	3,374	-39.3	-8.6
Reduced Lactose and Minerals					
Human and Animal <sup>5</sup>	7,069	4,194	4,720	-33.2	12.5
Lactose, Human and Animal	56,367	62,812	61,915	9.8	-1.4
Whey Protein Concentrate, Human <sup>3</sup>	21,344	22,674	21,834	2.3	-3.7
Whey Protein Concentrate, Animal <sup>3</sup>	2,852	2,114	2,329	-18.3	10.2
<b>Manufacturers' Selling Price <sup>6</sup></b>					
	<i>Cents per Pound</i>	<i>Cents per Pound</i>	<i>Cents per Pound</i>	<i>Cents Change</i>	<i>Cents Change</i>
Dry Whey, Animal	28.1	23.6	24.2	-3.9	0.6

<sup>1</sup> Revised.

<sup>2</sup> Final marketable product only. Does not include quantity used or shipped to another plant for further processing into dry whey or modified whey products. Does not include sweet-type, animal whey.

<sup>3</sup> Whey Protein Concentrate, 25.0 to 89.9 percent.

<sup>4</sup> Stocks held by manufacturers at all points and in transit.

<sup>5</sup> Reduced lactose and minerals stocks combined to avoid disclosure of individual operations.

<sup>6</sup> Prices for bulk goods, f.o.b. plant. Average monthly prices reported by firms.

**Dairy Products: Production by Product and Month,  
United States, 2004-2005 <sup>1</sup>**

Product and Month	By Month			Cumulative		
	2004	2005	Change From 2004	2004	2005	Change From 2004
	<i>1,000 Pounds</i>	<i>1,000 Pounds</i>	<i>Percent</i>	<i>1,000 Pounds</i>	<i>1,000 Pounds</i>	<i>Percent</i>
<b>Total Cheese</b>						
Jan	737,997	754,684	2.3	737,997	754,684	2.3
Feb	705,525	707,365	0.3	1,443,522	1,462,049	1.3
Mar	785,626	799,304	1.7	2,229,148	2,261,353	1.4
Apr	761,046	756,908	-0.5	2,990,194	3,018,261	0.9
May	752,051	782,471	4.0	3,742,245	3,800,732	1.6
Jun	715,332			4,457,577		
Jul	708,739			5,166,316		
Aug	719,538			5,885,854		
Sep	714,357			6,600,211		
Oct	748,044			7,348,255		
Nov	754,345			8,102,600		
Dec	773,863			8,876,463		
<b>American Cheese</b>						
Jan	318,986	322,188	1.0	318,986	322,188	1.0
Feb	295,990	293,137	-1.0	614,976	615,325	0.1
Mar	324,234	331,544	2.3	939,210	946,869	0.8
Apr	325,061	328,413	1.0	1,264,271	1,275,282	0.9
May	332,481	333,375	0.3	1,596,752	1,608,657	0.7
Jun	308,517			1,905,269		
Jul	302,724			2,207,993		
Aug	300,384			2,508,377		
Sep	294,368			2,802,745		
Oct	309,184			3,111,929		
Nov	302,611			3,414,540		
Dec	324,236			3,738,776		
<b>Cheddar Cheese <sup>2</sup></b>						
Jan	259,327	261,049	0.7	259,327	261,049	0.7
Feb	237,293	237,535	0.1	496,620	498,584	0.4
Mar	260,336	268,495	3.1	756,956	767,079	1.3
Apr	264,068	263,046	-0.4	1,021,024	1,030,125	0.9
May	272,736	267,154	-2.0	1,293,760	1,297,279	0.3
Jun	249,420			1,543,180		
Jul	242,075			1,785,255		
Aug	237,758			2,023,013		
Sep	234,648			2,257,661		
Oct	245,489			2,503,150		
Nov	242,353			2,745,503		
Dec	258,924			3,004,427		

See footnote(s) at end of table.

--continued

**Dairy Products: Production by Product and Month,  
United States, 2004-2005 <sup>1</sup> (continued)**

Product and Month	By Month			Cumulative		
	2004	2005	Change From 2004	2004	2005	Change From 2004
	<i>1,000 Pounds</i>	<i>1,000 Pounds</i>	<i>Percent</i>	<i>1,000 Pounds</i>	<i>1,000 Pounds</i>	<i>Percent</i>
Italian Cheese						
Jan	310,574	317,189	2.1	310,574	317,189	2.1
Feb	300,625	301,788	0.4	611,199	618,977	1.3
Mar	334,041	340,532	1.9	945,240	959,509	1.5
Apr	310,075	313,394	1.1	1,255,315	1,272,903	1.4
May	304,228	328,786	8.1	1,559,543	1,601,689	2.7
Jun	291,946			1,851,489		
Jul	288,740			2,140,229		
Aug	296,512			2,436,741		
Sep	287,570			2,724,311		
Oct	300,981			3,025,292		
Nov	313,306			3,338,598		
Dec	321,692			3,660,290		
Mozzarella						
Jan	248,207	251,399	1.3	248,207	251,399	1.3
Feb	241,259	239,290	-0.8	489,466	490,689	0.2
Mar	264,782	269,487	1.8	754,248	760,176	0.8
Apr	250,697	248,480	-0.9	1,004,945	1,008,656	0.4
May	246,988	262,444	6.3	1,251,933	1,271,100	1.5
Jun	234,934			1,486,867		
Jul	228,220			1,715,087		
Aug	232,497			1,947,584		
Sep	225,064			2,172,648		
Oct	235,938			2,408,586		
Nov	249,669			2,658,255		
Dec	258,281			2,916,536		
Other Italian						
Jan	62,367	65,790	5.5	62,367	65,790	5.5
Feb	59,366	62,498	5.3	121,733	128,288	5.4
Mar	69,259	71,045	2.6	190,992	199,333	4.4
Apr	59,378	64,914	9.3	250,370	264,247	5.5
May	57,240	66,342	15.9	307,610	330,589	7.5
Jun	57,012			364,622		
Jul	60,520			425,142		
Aug	64,015			489,157		
Sep	62,506			551,663		
Oct	65,043			616,706		
Nov	63,637			680,343		
Dec	63,411			743,754		

See footnote(s) at end of table.

--continued

**Dairy Products: Production by Product and Month,  
United States, 2004-2005 <sup>1</sup> (continued)**

Product and Month	By Month			Cumulative		
	2004	2005	Change From 2004	2004	2005	Change From 2004
	<i>1,000 Pounds</i>	<i>1,000 Pounds</i>	<i>Percent</i>	<i>1,000 Pounds</i>	<i>1,000 Pounds</i>	<i>Percent</i>
Butter						
Jan	129,346	128,653	-0.5	129,346	128,653	-0.5
Feb	108,593	113,492	4.5	237,939	242,145	1.8
Mar	100,383	122,135	21.7	338,322	364,280	7.7
Apr	100,324	115,659	15.3	438,646	479,939	9.4
May	110,120	120,295	9.2	548,766	600,234	9.4
Jun	99,156			647,922		
Jul	92,615			740,537		
Aug	90,329			830,866		
Sep	94,242			925,108		
Oct	104,386			1,029,494		
Nov	101,376			1,130,870		
Dec	118,808			1,249,678		
Nonfat Dry Milk, Human						
Jan	129,320	93,775	-27.5	129,320	93,775	-27.5
Feb	115,769	94,334	-18.5	245,089	188,109	-23.2
Mar	117,981	109,049	-7.6	363,070	297,158	-18.2
Apr	134,011	111,223	-17.0	497,081	408,381	-17.8
May	151,291	122,504	-19.0	648,372	530,885	-18.1
Jun	144,095			792,467		
Jul	134,566			927,033		
Aug	113,617			1,040,650		
Sep	93,936			1,134,586		
Oct	94,814			1,229,400		
Nov	83,789			1,313,189		
Dec	93,201			1,406,390		
Total Dry Whey <sup>3</sup>						
Jan	86,784	86,194	-0.7	86,784	86,194	-0.7
Feb	84,585	79,884	-5.6	171,369	166,078	-3.1
Mar	92,788	91,544	-1.3	264,157	257,622	-2.5
Apr	91,816	90,958	-0.9	355,973	348,580	-2.1
May	90,215	93,160	3.3	446,188	441,740	-1.0
Jun	86,681			532,869		
Jul	83,065			615,934		
Aug	86,673			702,607		
Sep	80,239			782,846		
Oct	80,884			863,730		
Nov	83,609			947,339		
Dec	87,559			1,034,898		

See footnote(s) at end of table.

--continued



**Dairy Products: Production by Product and Month,  
United States, 2004-2005 <sup>1</sup> (continued)**

Product and Month	By Month			Cumulative		
	2004	2005	Change From 2004	2004	2005	Change From 2004
	<i>1,000 Pounds</i>	<i>1,000 Pounds</i>	<i>Percent</i>	<i>1,000 Pounds</i>	<i>1,000 Pounds</i>	<i>Percent</i>
Cream Cottage Cheese						
Jan	32,541	29,496	-9.4	32,541	29,496	-9.4
Feb	30,439	27,939	-8.2	62,980	57,435	-8.8
Mar	34,783	32,532	-6.5	97,763	89,967	-8.0
Apr	31,113	30,437	-2.2	128,876	120,404	-6.6
May	30,406	31,477	3.5	159,282	151,881	-4.6
Jun	30,862			190,144		
Jul	32,752			222,896		
Aug	33,029			255,925		
Sep	32,130			288,055		
Oct	30,838			318,893		
Nov	30,298			349,191		
Dec	28,038			377,229		
Lowfat Cottage Cheese						
Jan	32,847	29,468	-10.3	32,847	29,468	-10.3
Feb	31,469	31,520	0.2	64,316	60,988	-5.2
Mar	36,032	33,230	-7.8	100,348	94,218	-6.1
Apr	32,158	32,589	1.3	132,506	126,807	-4.3
May	34,149	34,925	2.3	166,655	161,732	-3.0
Jun	34,236			200,891		
Jul	32,462			233,353		
Aug	33,972			267,325		
Sep	34,435			301,760		
Oct	31,112			332,872		
Nov	30,599			363,471		
Dec	27,748			391,219		
	<i>1,000 Gallons</i>	<i>1,000 Gallons</i>	<i>Percent</i>	<i>1,000 Gallons</i>	<i>1,000 Gallons</i>	<i>Percent</i>
Ice Cream, Hard						
Jan	60,148	60,440	0.5	60,148	60,440	0.5
Feb	64,848	64,240	-0.9	124,996	124,680	-0.3
Mar	78,409	78,232	-0.2	203,405	202,912	-0.2
Apr	76,836	77,426	0.8	280,241	280,338	
May	74,378	78,398	5.4	354,619	358,736	1.2
Jun	85,245			439,864		
Jul	77,886			517,750		
Aug	73,697			591,447		
Sep	70,776			662,223		
Oct	68,134			730,357		
Nov	59,116			789,473		
Dec	55,193			844,666		

See footnote(s) at end of table.

--continued

**Dairy Products: Production by Product and Month,  
United States, 2004-2005 <sup>1</sup> (continued)**

Product and Month	By Month			Cumulative		
	2004	2005	Change From 2004	2004	2005	Change From 2004
	<i>1,000 Gallons</i>	<i>1,000 Gallons</i>	<i>Percent</i>	<i>1,000 Gallons</i>	<i>1,000 Gallons</i>	<i>Percent</i>
<b>Ice Cream, Lowfat</b>						
Jan	26,381	27,079	2.6	26,381	27,079	2.6
Feb	28,440	28,083	-1.3	54,821	55,162	0.6
Mar	37,856	36,580	-3.4	92,677	91,742	-1.0
Apr	39,687	35,701	-10.0	132,364	127,443	-3.7
May	38,796	36,170	-6.8	171,160	163,613	-4.4
Jun	41,920			213,080		
Jul	42,430			255,510		
Aug	39,329			294,839		
Sep	34,495			329,334		
Oct	31,233			360,567		
Nov	27,363			387,930		
Dec	27,544			415,474		
<b>Ice Cream, NF, Hard</b>						
Jan	1,359	1,164	-14.3	1,359	1,164	-14.3
Feb	1,462	1,619	10.7	2,821	2,783	-1.3
Mar	1,669	1,670	0.1	4,490	4,453	-0.8
Apr	2,009	1,642	-18.3	6,499	6,095	-6.2
May	1,757	1,823	3.8	8,256	7,918	-4.1
Jun	1,904			10,160		
Jul	1,725			11,885		
Aug	1,708			13,593		
Sep	1,455			15,048		
Oct	1,630			16,678		
Nov	1,118			17,796		
Dec	1,281			19,077		
<b>Sherbet, Hard</b>						
Jan	3,558	4,194	17.9	3,558	4,194	17.9
Feb	3,837	4,116	7.3	7,395	8,310	12.4
Mar	5,295	4,915	-7.2	12,690	13,225	4.2
Apr	4,665	5,047	8.2	17,355	18,272	5.3
May	4,714	4,919	4.3	22,069	23,191	5.1
Jun	5,602			27,671		
Jul	4,700			32,371		
Aug	4,690			37,061		
Sep	4,214			41,275		
Oct	3,638			44,913		
Nov	3,434			48,347		
Dec	2,920			51,267		

See footnote(s) at end of table.

--continued

**Dairy Products: Production by Product and Month,  
United States, 2004-2005 (continued)**

Product and Month	By Month			Cumulative		
	2004	2005	Change From 2004	2004	2005	Change From 2004
	<i>1,000 Gallons</i>	<i>1,000 Gallons</i>	<i>Percent</i>	<i>1,000 Gallons</i>	<i>1,000 Gallons</i>	<i>Percent</i>
Sour Cream						
Jan	75,950	76,883	1.2	75,950	76,883	1.2
Feb	69,869	75,324	7.8	145,819	152,207	4.4
Mar	84,898	87,189	2.7	230,717	239,396	3.8
Apr	74,707	72,041	-3.6	305,424	311,437	2.0
May	75,132	84,750	12.8	380,556	396,187	4.1
Jun	80,905			461,461		
Jul	76,850			538,311		
Aug	82,337			620,648		
Sep	77,726			698,374		
Oct	83,612			781,986		
Nov	104,098			886,084		
Dec	94,078			980,162		

See footnote(s) at end of table.

--continued

**Dairy Products: Production by Product and Month,  
United States, 2004-2005 (continued)**

Product and Month	By Month			Cumulative		
	2004	2005	Change From 2004	2004	2005	Change From 2004
	<i>1,000 Gallons</i>	<i>1,000 Gallons</i>	<i>Percent</i>	<i>1,000 Gallons</i>	<i>1,000 Gallons</i>	<i>Percent</i>
Yogurt						
Jan	217,302	223,206	2.7	217,302	223,206	2.7
Feb	216,153	237,598	9.9	433,455	460,804	6.3
Mar	247,890	265,285	7.0	681,345	726,089	6.6
Apr	226,545	251,984	11.2	907,890	978,073	7.7
May	242,139	261,919	8.2	1,150,029	1,239,992	7.8
Jun	241,514			1,391,543		
Jul	212,831			1,604,374		
Aug	230,018			1,834,392		
Sep	243,742			2,078,134		
Oct	223,663			2,301,797		
Nov	193,091			2,494,888		
Dec	213,766			2,708,654		

See footnote(s) at end of table.

--continued

**Dairy Products: Production by Product and Month,  
United States, 2004-2005 <sup>1</sup> (continued)**

Product and Month	By Month			Cumulative		
	2004	2005	Change From 2004	2004	2005	Change From 2004
	<i>1,000 Gallons</i>	<i>1,000 Gallons</i>	<i>Percent</i>	<i>1,000 Gallons</i>	<i>1,000 Gallons</i>	<i>Percent</i>
Frozen Yogurt						
Jan	5,141	4,299	-16.4	5,141	4,299	-16.4
Feb	5,448	4,457	-18.2	10,589	8,756	-17.3
Mar	6,269	6,010	-4.1	16,858	14,766	-12.4
Apr	6,369	5,345	-16.1	23,227	20,111	-13.4
May	6,148	6,132	-0.3	29,375	26,243	-10.7
Jun	6,580			35,955		
Jul	5,704			41,659		
Aug	6,137			47,796		
Sep	5,753			53,549		
Oct	5,270			58,819		
Nov	4,705			63,524		
Dec	4,148			67,672		

<sup>1</sup> April 2005 data revised.

<sup>2</sup> Monthly 2004 data revised. January 2005 data revised.

<sup>3</sup> Excludes all modified dry whey products.

**Total Cheese, Excluding Cottage Cheese: Production by  
State and United States, May 2004-2005**

State	May 2004	Apr <sup>1</sup> 2005	May 2005	Change From	
				May 2004	Apr 2005
	<i>1,000 Pounds</i>	<i>1,000 Pounds</i>	<i>1,000 Pounds</i>	<i>Percent</i>	<i>Percent</i>
CA	165,164	182,218	187,181	13.3	2.7
ID	60,204				
IL	7,589	7,640	7,981	5.2	4.5
IA	13,890	13,443	13,466	-3.1	0.2
MA	80	44	58	-27.5	31.8
MN	57,349	54,351	55,635	-3.0	2.4
MO	10,027				
NY	52,836	52,587	56,786	7.5	8.0
OH	14,921	15,605	16,906	13.3	8.3
PA	31,693	32,965	34,227	8.0	3.8
SD	12,745	14,299	14,568	14.3	1.9
UT	7,225	5,933	6,043	-16.4	1.9
WI	194,186	192,914	201,472	3.8	4.4
Oth Sts <sup>2</sup>	124,141	184,909	188,148	51.6	1.8
US	752,050	756,908	782,471	4.0	3.4
N Atlantic	102,245	100,572	107,037	4.7	6.4
S Atlantic	4,722	3,297	4,732	0.2	43.5
E N Central	231,122	229,860	240,835	4.2	4.8
W N Central	97,308	88,287	88,664	-8.9	0.4
S Central	7,603	9,236	8,412	10.6	-8.9
West	309,050	325,656	332,791	7.7	2.2

<sup>1</sup> Revised.

<sup>2</sup> States not shown when fewer than 3 plants reported or individual plant operations could be disclosed. Percent change shown only when comparable States are included in the calculation.

**American Cheese: Production by State and United States, May 2004-2005**

State	May 2004	Apr <sup>1</sup> 2005	May 2005	Change From	
				May 2004	Apr 2005
	<i>1,000 Pounds</i>	<i>1,000 Pounds</i>	<i>1,000 Pounds</i>	<i>Percent</i>	<i>Percent</i>
CA	70,685	73,853	76,658	8.5	3.8
IA	11,205	10,591	10,505	-6.2	-0.8
MN	54,068	50,969	52,188	-3.5	2.4
NY	9,061	6,094	6,087	-32.8	-0.1
OH	2,968	3,130	3,366	13.4	7.5
OR	8,416	10,133	10,115	20.2	-0.2
WI	74,836	74,320	75,500	0.9	1.6
Oth Sts <sup>2</sup>	101,231	99,323	98,956	-2.2	-0.4
US	332,481	328,413	333,375	0.3	1.5
Atlantic	17,995	12,828	12,975	-27.9	1.1
E N Central	78,690	78,733	79,887	1.5	1.5
W N Central	73,361	69,332	70,842	-3.4	2.2
S Central	4,155	4,184	3,608	-13.2	-13.8
West	158,280	163,336	166,063	4.9	1.7

<sup>1</sup> Revised.

<sup>2</sup> States not shown when fewer than 3 plants reported or individual plant operations could be disclosed. Percent change shown only when comparable States are included in the calculation.

**Cheddar Cheese: Production by State and United States, May 2004-2005**

State	May <sup>1</sup> 2004	Apr <sup>2</sup> 2005	May 2005	Change From	
				May 2004	Apr 2005
	<i>1,000 Pounds</i>	<i>1,000 Pounds</i>	<i>1,000 Pounds</i>	<i>Percent</i>	<i>Percent</i>
CA	47,780	45,901	46,374	-2.9	1.0
MN	50,406	46,165	48,314	-4.2	4.7
NY	8,963	5,994	5,967	-33.4	-0.5
WI	59,076	59,800	60,700	2.7	1.5
Oth Sts <sup>3</sup>	96,809	105,186	105,799	9.3	0.6
US	272,736	263,046	267,154	-2.0	1.6
Atlantic	17,069	11,956	11,981	-29.8	0.2
E N Cen	61,305	62,038	62,978	2.7	1.5
W N Cen	64,228	59,501	61,175	-4.8	2.8
S Cen	4,154	4,184	3,608	-13.1	-13.8
West	125,980	125,367	127,412	1.1	1.6

<sup>1</sup> Revised 2004 Cheddar Cheese data released in the May 5, 2005 Dairy Products Report.

<sup>2</sup> Revised.

<sup>3</sup> States not shown when fewer than 3 plants reported or individual plant operations could be disclosed. Percent change shown only when comparable States are included in the calculation.

**Mozzarella Cheese: Production by State and United States, May 2004-2005**

State	May 2004	Apr <sup>1</sup> 2005	May 2005	Change From	
				May 2004	Apr 2005
	<i>1,000 Pounds</i>	<i>1,000 Pounds</i>	<i>1,000 Pounds</i>	<i>Percent</i>	<i>Percent</i>
CA	74,139	77,214	81,312	9.7	5.3
NY	15,928	15,080	15,964	0.2	5.9
PA	18,196	20,151	18,275	0.4	-9.3
WI	61,715	62,128	67,500	9.4	8.6
Oth Sts <sup>2</sup>	77,010	73,907	79,393	3.1	7.4
US	246,988	248,480	262,444	6.3	5.6
Atlantic <sup>3</sup>	43,068	42,338	43,843	1.8	3.6
E N Central	75,099	74,627	80,971	7.8	8.5
West	121,966	122,540	128,892	5.7	5.2

<sup>1</sup> Revised.

<sup>2</sup> States not shown when fewer than 3 plants reported or individual plant operations could be disclosed. Percent change shown only when comparable States are included in the calculation.

<sup>3</sup> Region totals may not add to U.S. when compiled regions could not be disclosed.

**Butter: Production by State and United States, May 2004-2005**

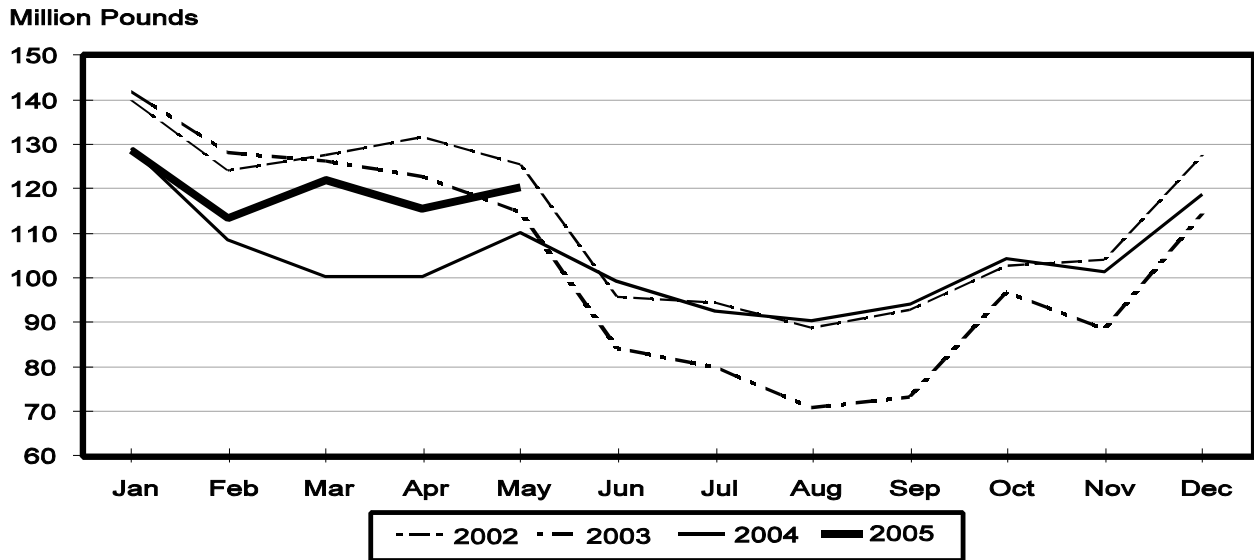
State	May 2004	Apr <sup>1</sup> 2005	May 2005	Change From	
				May 2004	Apr 2005
	<i>1,000 Pounds</i>	<i>1,000 Pounds</i>	<i>1,000 Pounds</i>	<i>Percent</i>	<i>Percent</i>
CA	31,540	32,839	30,904	-2.0	-5.9
NY	1,997	1,779	1,766	-11.6	-0.7
PA	6,410	6,439	6,870	7.2	6.7
WI	25,958	31,378	37,600	44.8	19.8
Oth Sts <sup>2</sup>	44,215	43,224	43,155	-2.4	-0.2
US	110,120	115,659	120,295	9.2	4.0
N Atlantic <sup>3</sup>	12,154	11,853	12,049	-0.9	1.7
E N Central	28,277	33,765	39,887	41.1	18.1
W N Central	11,538	6,857	6,268	-45.7	-8.6
West	45,058	49,146	47,015	4.3	-4.3

<sup>1</sup> Revised.

<sup>2</sup> States not shown when fewer than 3 plants reported or individual plant operations could be disclosed. Percent change shown only when comparable States are included in the calculation.

<sup>3</sup> Region totals may not add to U.S. when compiled regions could not be disclosed.

## Total Butter Production United States





**Nonfat Dry Milk, Human: Production by State  
and United States, May 2004-2005**

State	May 2004	Apr <sup>1</sup> 2005	May 2005	Change From	
				May 2004	Apr 2005
	<i>1,000 Pounds</i>	<i>1,000 Pounds</i>	<i>1,000 Pounds</i>	<i>Percent</i>	<i>Percent</i>
CA	70,400	38,645	42,923	-39.0	11.1
PA	11,180	10,031	12,399	10.9	23.6
Oth Sts <sup>2</sup>	69,653	62,547	67,182	-3.5	7.4
US	151,291	111,223	122,504	-19.0	10.1
Atlantic	22,386	21,964	25,470	13.8	16.0
E N Central	6,406	6,131	6,389	-0.3	4.2
W N Central	6,730	6,522	6,664	-1.0	2.2
S Central	8,587	9,368	9,289	8.2	-0.8
West	107,182	67,238	74,692	-30.3	11.1

<sup>1</sup> Revised.

<sup>2</sup> States not shown when fewer than 3 plants reported or individual plant operations could be disclosed. Percent change shown only when comparable States are included in the calculation.

**Dry Whey, Human: Production by State  
and United States, May 2004-2005**

State	May 2004	Apr <sup>1</sup> 2005	May 2005	Change From	
				May 2004	Apr 2005
	<i>1,000 Pounds</i>	<i>1,000 Pounds</i>	<i>1,000 Pounds</i>	<i>Percent</i>	<i>Percent</i>
CA	9,315	10,264	10,497	12.7	2.3
MN		4,122	4,467		8.4
NY	10,640	10,899	11,098	4.3	1.8
PA	8,838	9,050	8,812	-0.3	-2.6
UT	2,274	2,456	2,187	-3.8	-11.0
WI	25,011	24,641	25,400	1.6	3.1
Oth Sts <sup>2</sup>	26,345	22,283	23,229	-11.8	4.2
US	82,423	83,715	85,690	4.0	2.4
Atlantic	19,478	19,949	19,910	2.2	-0.2
Central	39,817	38,014	40,044	0.6	5.3
West	23,128	25,752	25,736	11.3	-0.1

<sup>1</sup> Revised.

<sup>2</sup> States not shown when fewer than 3 plants reported or individual plant operations could be disclosed. Percent change shown only when comparable States are included in the calculation.

**Ice Cream, Hard: Production by State and United States, May 2004-2005**

State	May 2004	Apr <sup>1</sup> 2005	May 2005	Change From	
				May 2004	Apr 2005
	<i>1,000 Gallons</i>	<i>1,000 Gallons</i>	<i>1,000 Gallons</i>	<i>Percent</i>	<i>Percent</i>
CA	11,635	10,838	11,819	1.6	9.1
FL	1,973	1,800	1,700	-13.8	-5.6
IL	3,104	3,200	3,535	13.9	10.5
IN	7,673	8,601	7,427	-3.2	-13.6
MD	1,689	1,782	1,688	-0.1	-5.3
MA	5,130	5,187	4,220	-17.7	-18.6
MI	1,556	1,390	1,428	-8.2	2.7
MN	3,757	3,649	3,871	3.0	6.1
MO	1,985	2,314	2,047	3.1	-11.5
NY	2,610	2,765	2,641	1.2	-4.5
NC	1,294	1,159	1,311	1.3	13.1
OH	2,207	2,154	2,280	3.3	5.8
OR	1,290	1,140	1,275	-1.2	11.8
PA	2,904	3,664	3,576	23.1	-2.4
TN	1,458	1,571	1,507	3.4	-4.1
TX	3,787	3,176	5,237	38.3	64.9
UT	2,081	2,162	2,485	19.4	14.9
Oth Sts <sup>2</sup>	18,245	20,872	20,337	11.5	-2.6
US	74,378	77,426	78,398	5.4	1.3
N Atlantic	13,470	15,534	14,073	4.5	-9.4
S Atlantic	6,110	6,226	6,303	3.2	1.2
E N Central	15,425	16,193	15,540	0.7	-4.0
W N Central	12,476	12,952	13,221	6.0	2.1
S Central	8,759	8,526	10,855	23.9	27.3
West	18,138	17,995	18,406	1.5	2.3

<sup>1</sup> Revised.

<sup>2</sup> States not shown when fewer than 3 plants reported or individual plant operations could be disclosed. Percent change shown only when comparable States are included in the calculation.

**Canned Milk and Dry Milk Products: Manufacturers' Shipments,  
and Stocks, May, 2004-2005**

Product	May 2004	Apr 2005 <sup>1</sup>	May 2005	Change From	
				May 2004	Apr 2005
	<b>Manufacturers' Shipments<sup>2</sup></b>				
	<i>1,000 Pounds</i>	<i>1,000 Pounds</i>	<i>1,000 Pounds</i>	<i>Percent</i>	<i>Percent</i>
Nonfat Dry Milk, Human	123,055	95,358	113,257	-8.0	18.8
	<b>Manufacturers' Stocks End-of-Month<sup>3</sup></b>				
	<i>1,000 Pounds</i>	<i>1,000 Pounds</i>	<i>1,000 Pounds</i>	<i>Percent</i>	<i>Percent</i>
Canned Evaporated and Condensed Whole Milk	55,640	54,438	70,579	26.8	29.7
Nonfat Dry Milk, Human	127,307	108,079	110,102	-13.5	1.9
Dry Buttermilk, Total	5,183	8,850	9,547	84.2	7.9

<sup>1</sup> Revised.

<sup>2</sup> For dry products, shipments of bulk goods only.

<sup>3</sup> Stocks held by manufacturers at all points and in transit.

**Procedures and Reliability:** Estimates included in this report are based on data provided each month by manufacturers of these products. In 32 States, the State Departments of Agriculture assist in collection of data, which eliminates duplicate reporting and reduces respondent burden. Data are collected by mail, personal and telephone interviews following the close of each month. There were 1,096 manufacturers that made one or more products in 2004. Each month, reports are generally received from all dairy plants in States with small numbers of plants. In States with large numbers of plants, survey procedures are designed to obtain monthly reports from all large plants and from a sample of small plants. Monthly estimates are based upon returns from about 70 percent of the plants which account for 70 to 90 percent of the total production of major dairy products.

**Revision Policy:** Monthly estimates are subject to revision the month following the preliminary estimates. Annual estimates are published in the "**Dairy Products**" report published each April which includes any revisions made to current and previous year. An attempt is made to get information from all plants for preparing these estimates

## ACCESS TO REPORTS!!

---

For your convenience, there are several ways to obtain NASS reports, data products, and services:

### INTERNET ACCESS

All NASS reports are available free of charge on the worldwide Internet. For access, connect to the Internet and go to the NASS Home Page at: [www.usda.gov/nass/](http://www.usda.gov/nass/). Select "Today's Reports" or Publications and then Reports Calendar or Publications and then Search, by Title or Subject.

### E-MAIL SUBSCRIPTION

All NASS reports are available by subscription free of charge direct to your e-mail address. Starting with the NASS Home Page at [www.usda.gov/nass/](http://www.usda.gov/nass/), click on **Publications**, then click on the **Subscribe by E-mail** button which takes you to the page describing e-mail delivery of reports. Finally, click on **Go to the Subscription Page** and follow the instructions.

-----

### PRINTED REPORTS OR DATA PRODUCTS

**CALL OUR TOLL-FREE ORDER DESK: 800-999-6779 (U.S. and Canada)**  
**Other areas, please call 703-605-6220      FAX: 703-605-6900**  
**(Visa, MasterCard, check, or money order acceptable for payment.)**

-----

### ASSISTANCE

For **assistance** with general agricultural statistics or further information about NASS or its products or services, contact the **Agricultural Statistics Hotline** at **800-727-9540**, 7:30 a.m. to 4:00 p.m. ET, or e-mail: [nass@nass.usda.gov](mailto:nass@nass.usda.gov).

The U.S. Department of Agriculture (USDA) prohibits discrimination in all its programs and activities on the basis of race, color, national origin, sex, religion, age, disability, political beliefs, sexual orientation, and marital or family status. (Not all prohibited bases apply to all programs.) Persons with disabilities who require alternative means for communication of program information (Braille, large print, audiotape, etc.) should contact USDA's TARGET Center at 202-720-2600 (voice and TDD).

To file a complaint of discrimination, write USDA, Director, Office of Civil Rights, Room 326-W, Whitten Building, 14th and Independence Avenue, SW, Washington, DC 20250-9410 or call 202-720-5964 (voice and TDD). USDA is an equal opportunity provider and employer.