

Released August 4, 2005, by the National Agricultural Statistics Service (NASS), Agricultural Statistics Board, U.S. Department of Agriculture. For information on *Dairy Products* call Ann Summa at (202) 720-3278, office hours 7:30 a.m. to 4:00 p.m. ET.

June 2005 Highlights

Total cheese output (excluding cottage cheese) was 761 million pounds, 6.4 percent above June 2004 but 3.1 percent below May 2005.

American type cheese production totaled 321 million pounds, 4.1 percent above June 2004 but 3.5 percent below May 2005.

Butter production was 104 million pounds in June, 5.2 percent above June 2004 but 12.8 percent below May 2005.

Frozen dessert: (comparisons with June 2004)

Ice cream, Regular (hard) --- 90.3 million gallons, up 6.0 percent.

Ice cream, Lowfat (total) --- 41.5 million gallons, down 1.1 percent.

Ice cream, Nonfat (hard) --- 1.86 million gallons, down 2.1 percent.

Sherbet (hard) --- 5.80 million gallons, up 3.5 percent.

Frozen Yogurt (total) --- 6.01 million gallons, down 8.6 percent.

Nonfat dry milk for human food: (compared with June 2004) --- 125 million pounds, down 13.1 percent.

Dry whey products: (comparisons with June 2004)

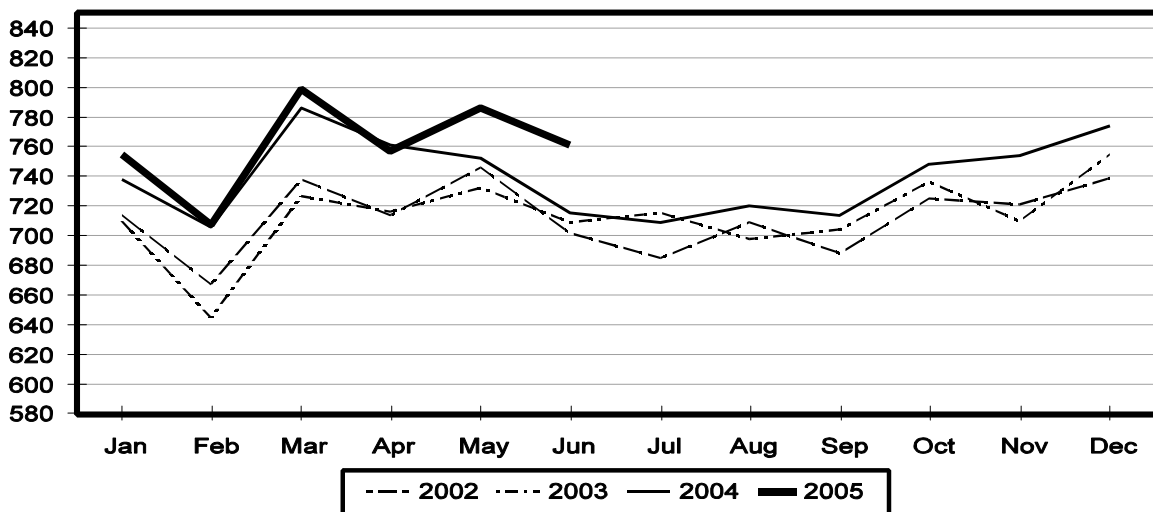
Dry whey, human --- 81.6 million pounds, up 3.1 percent.

Dry whey, animal --- 8.08 million pounds, up 7.6 percent.

Dry whey, total --- 89.7 million pounds, up 3.5 percent.

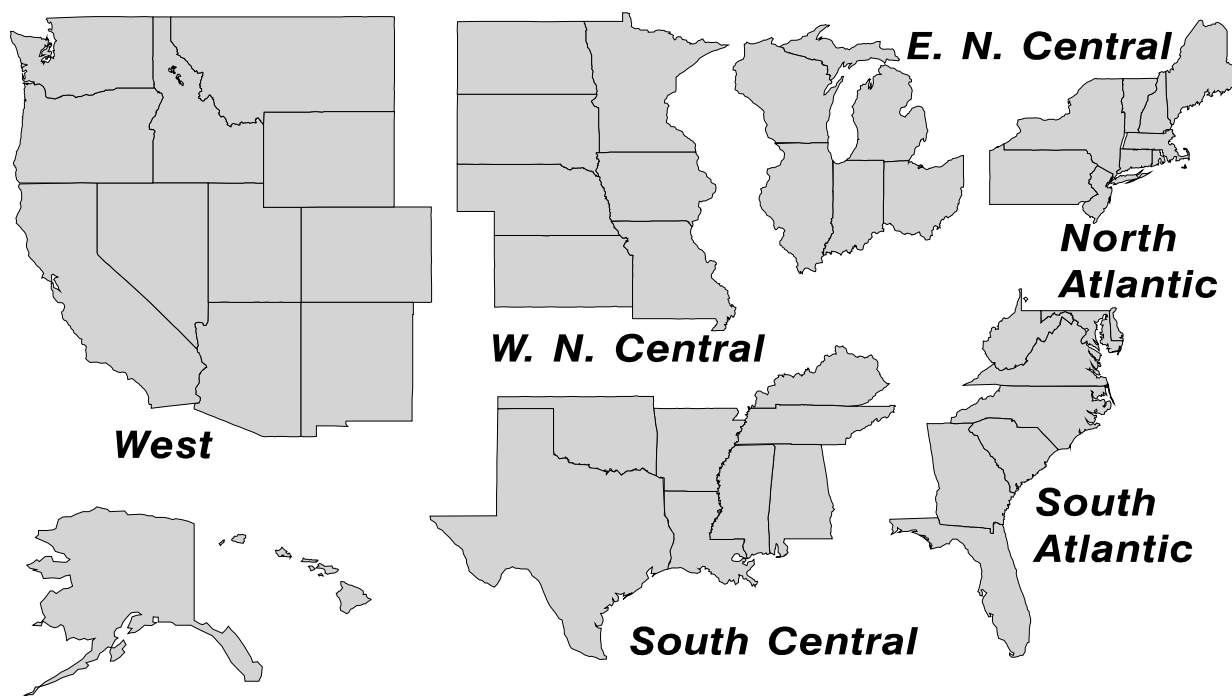
Total Cheese Production United States

Million Pounds



U. S. Geographic Regions Dairy Products

State totals are not published when fewer than 3 firms have reported or one firm comprises more than 60 percent of the State total. If we are not able to publish a region for confidentiality reasons, it will be combined with other regions when possible. For example, if North Atlantic can not be published, then it will be combined with South Atlantic to publish Atlantic. The West North Central and East North Central will be combined, if necessary, to form North Central. In the event that neither could be published, they may be combined with South Central to publish Central. Some tables will have only limited regions shown, therefore the regions may not add to the United States total.



Contents

Page

Dairy Products: Production by Product, United States, June, 2004-2005	1
Whey and Modified Whey Products: Production, Stocks, and Prices, United States, June, 2004-2005	2
Dairy Products: Production by Product and Month, United States, 2004-2005	3
Select Commodities by State and United States, June, 2004-2005	10
Canned Milk and Dry Milk Products: Manufacturer's Shipments, Stocks, and Selling Prices, June, 2004-2005	15
Procedures and Reliability	16

**Dairy Products: Production by Product,
United States, June, 2004-2005**

Product	Jun 2004	May 2005 ¹	Jun 2005	Change From	
				Jun 2004	May 2005
	<i>1,000 Pounds</i>	<i>1,000 Pounds</i>	<i>1,000 Pounds</i>	<i>Percent</i>	<i>Percent</i>
Butter	99,156	119,508	104,265	5.2	-12.8
Cheese					
American Types ²	308,517	332,821	321,013	4.1	-3.5
Cheddar ³	249,420	266,543	257,736	3.3	-3.3
Swiss	23,613	25,490	24,591	4.1	-3.5
Brick and Muenster	6,765	5,999	6,222	-8.0	3.7
Cream and Neufchatel	50,394	51,134	52,935	5.0	3.5
Hispanic	11,218	13,806	13,256	18.2	-4.0
Mozzarella	234,934	262,483	253,920	8.1	-3.3
Other Italian Types	57,012	66,785	63,500	11.4	-4.9
Total Italian Types	291,946	329,268	317,420	8.7	-3.6
All Other Types	22,879	27,021	25,724	12.4	-4.8
Total	715,331	785,539	761,032	6.4	-3.1
Cottage Cheese, Curd ⁴	39,245	39,048	39,635	1.0	1.5
Cottage Cheese, Cream ⁵	30,862	31,454	31,206	1.1	-0.8
Cottage Cheese, Lowfat ⁶	34,236	34,758	34,185	-0.1	-1.6
Canned Evaporated and Condensed Whole Milk	52,828	46,190	46,132	-12.7	-0.1
Dry Whole Milk	2,395	3,144	2,068	-13.7	-34.2
Nonfat Dry Milk, Human	144,095	124,105	125,231	-13.1	0.9
Dry Skim Milk, Animal	511	707	571	11.7	-19.2
Dry Buttermilk	4,437	5,206	4,330	-2.4	-16.8
Sour Cream	80,905	85,130	84,572	4.5	-0.7
Yogurt, Plain & Flavored	241,514	262,207	257,305	6.5	-1.9
	<i>1,000 Gallons</i>	<i>1,000 Gallons</i>	<i>1,000 Gallons</i>	<i>Percent</i>	<i>Percent</i>
Frozen Products					
Ice Cream, Hard	85,245	79,510	90,324	6.0	13.6
Ice Cream, Lowfat, Hard	10,773	9,435	11,097	3.0	17.6
Ice Cream, Lowfat, Soft	31,147	26,133	30,363	-2.5	16.2
Ice Cream, Lowfat, Total	41,920	35,568	41,460	-1.1	16.6
Ice Cream, Nonfat, Hard	1,904	1,745	1,864	-2.1	6.8
Sherbet, Hard	5,602	5,022	5,796	3.5	15.4
Water and Juice Ices	7,306	6,552	7,208	-1.3	10.0
Frozen Yogurt, Total	6,580	6,241	6,013	-8.6	-3.7
Regular & Lowfat, Hard	1,684	1,783	1,632	-3.1	-8.5
Nonfat, Hard	1,133	1,100	1,179	4.1	7.2
Other Frozen Dairy Products	997	942	1,043	4.6	10.7
Mix for Frozen Products					
Ice Cream Mix	49,845	45,543	50,926	2.2	11.8
Ice Cream, Lowfat, Mix	23,164	19,730	22,995	-0.7	16.5
Ice Cream, Nonfat, Mix	1,356	1,254	1,366	0.7	8.9
Sherbet Mix	3,986	3,579	4,159	4.3	16.2
Yogurt Mix	3,783	3,671	3,537	-6.5	-3.7

¹ Revised.

² Includes Cheddar, Colby, Monterey, and Jack.

³ Revised 2004 Cheddar Cheese data released in the May 5, 2005 Dairy Products Report.

⁴ Mostly used for processing into cream or lowfat cottage cheese.

⁵ Fat content 4 percent or more.

⁶ Fat content less than 4 percent.

**Whey and Modified Whey Products: Production, Stocks,
and Prices, United States, June, 2004-2005**

Product	Jun 2004	May 2005 ¹	Jun 2005	Change From	
				Jun 2004	May 2005
Production					
	<i>1,000 Pounds</i>	<i>1,000 Pounds</i>	<i>1,000 Pounds</i>	<i>Percent</i>	<i>Percent</i>
Condensed Whey, Solids Content ²					
Sweet-Type, Human	7,760	7,431	7,180	-7.5	-3.4
Dry Whey Products					
Dry Whey, Human	79,171	85,709	81,597	3.1	-4.8
Dry Whey, Animal	7,510	7,449	8,083	7.6	8.5
Dry Whey, Total	86,681	93,158	89,680	3.5	-3.7
Reduced Lactose and Minerals					
Human Food	2,922	3,933	3,972	35.9	1.0
Animal Feed	3,838	5,325	5,904	53.8	10.9
Lactose, Human and Animal	56,859	57,751	55,803	-1.9	-3.4
Whey					
Protein Concentrate, Human ³	24,353	25,938	28,521	17.1	10.0
Protein Concentrate, Animal ³	4,610	4,172	3,737	-18.9	-10.4
Manufacturers' Stocks End-of-Month ⁴					
	<i>1,000 Pounds</i>	<i>1,000 Pounds</i>	<i>1,000 Pounds</i>	<i>Percent</i>	<i>Percent</i>
Dry Whey Products					
Dry Whey, Human	42,254	36,732	34,960	-17.3	-4.8
Dry Whey, Animal	6,338	3,374	3,501	-44.8	3.8
Reduced Lactose and Minerals					
Human and Animal ⁵	6,336	4,620	3,979	-37.2	-13.9
Lactose, Human and Animal	65,200	61,903	61,396	-5.8	-0.8
Whey Protein Concentrate, Human ³	22,199	21,832	23,274	4.8	6.6
Whey Protein Concentrate, Animal ³	3,011	2,369	2,123	-29.5	-10.4
Manufacturers' Selling Price ⁶					
	<i>Cents per Pound</i>	<i>Cents per Pound</i>	<i>Cents per Pound</i>	<i>Cents Change</i>	<i>Cents Change</i>
Dry Whey, Animal	27.3	24.2	25.5	-1.8	1.3

¹ Revised.

² Final marketable product only. Does not include quantity used or shipped to another plant for further processing into dry whey or modified whey products. Does not include sweet-type, animal whey.

³ Whey Protein Concentrate, 25.0 to 89.9 percent.

⁴ Stocks held by manufacturers at all points and in transit.

⁵ Reduced lactose and minerals stocks combined to avoid disclosure of individual operations.

⁶ Prices for bulk goods, f.o.b. plant. Average monthly prices reported by firms.

**Dairy Products: Production by Product and Month,
United States, 2004-2005 ¹**

Product and Month	By Month			Cumulative		
	2004	2005	Change From 2004	2004	2005	Change From 2004
	<i>1,000 Pounds</i>	<i>1,000 Pounds</i>	<i>Percent</i>	<i>1,000 Pounds</i>	<i>1,000 Pounds</i>	<i>Percent</i>
Total Cheese						
Jan	737,997	754,684	2.3	737,997	754,684	2.3
Feb	705,525	707,365	0.3	1,443,522	1,462,049	1.3
Mar	785,626	799,304	1.7	2,229,148	2,261,353	1.4
Apr	761,046	756,908	-0.5	2,990,194	3,018,261	0.9
May	752,051	785,539	4.5	3,742,245	3,803,800	1.6
Jun	715,332	761,032	6.4	4,457,577	4,564,832	2.4
Jul	708,739			5,166,316		
Aug	719,538			5,885,854		
Sep	714,357			6,600,211		
Oct	748,044			7,348,255		
Nov	754,345			8,102,600		
Dec	773,863			8,876,463		
American Cheese						
Jan	318,986	322,188	1.0	318,986	322,188	1.0
Feb	295,990	293,137	-1.0	614,976	615,325	0.1
Mar	324,234	331,544	2.3	939,210	946,869	0.8
Apr	325,061	328,413	1.0	1,264,271	1,275,282	0.9
May	332,481	332,821	0.1	1,596,752	1,608,103	0.7
Jun	308,517	321,013	4.1	1,905,269	1,929,116	1.3
Jul	302,724			2,207,993		
Aug	300,384			2,508,377		
Sep	294,368			2,802,745		
Oct	309,184			3,111,929		
Nov	302,611			3,414,540		
Dec	324,236			3,738,776		
Cheddar Cheese ²						
Jan	259,327	261,049	0.7	259,327	261,049	0.7
Feb	237,293	237,535	0.1	496,620	498,584	0.4
Mar	260,336	268,495	3.1	756,956	767,079	1.3
Apr	264,068	263,046	-0.4	1,021,024	1,030,125	0.9
May	272,736	266,543	-2.3	1,293,760	1,296,668	0.2
Jun	249,420	257,736	3.3	1,543,180	1,554,404	0.7
Jul	242,075			1,785,255		
Aug	237,758			2,023,013		
Sep	234,648			2,257,661		
Oct	245,489			2,503,150		
Nov	242,353			2,745,503		
Dec	258,924			3,004,427		

See footnote(s) at end of table.

--continued

**Dairy Products: Production by Product and Month,
United States, 2004-2005 ¹ (continued)**

Product and Month	By Month			Cumulative		
	2004	2005	Change From 2004	2004	2005	Change From 2004
	<i>1,000 Pounds</i>	<i>1,000 Pounds</i>	<i>Percent</i>	<i>1,000 Pounds</i>	<i>1,000 Pounds</i>	<i>Percent</i>
Italian Cheese						
Jan	310,574	317,189	2.1	310,574	317,189	2.1
Feb	300,625	301,788	0.4	611,199	618,977	1.3
Mar	334,041	340,532	1.9	945,240	959,509	1.5
Apr	310,075	313,394	1.1	1,255,315	1,272,903	1.4
May	304,228	329,268	8.2	1,559,543	1,602,171	2.7
Jun	291,946	317,420	8.7	1,851,489	1,919,591	3.7
Jul	288,740			2,140,229		
Aug	296,512			2,436,741		
Sep	287,570			2,724,311		
Oct	300,981			3,025,292		
Nov	313,306			3,338,598		
Dec	321,692			3,660,290		
Mozzarella						
Jan	248,207	251,399	1.3	248,207	251,399	1.3
Feb	241,259	239,290	-0.8	489,466	490,689	0.2
Mar	264,782	269,487	1.8	754,248	760,176	0.8
Apr	250,697	248,480	-0.9	1,004,945	1,008,656	0.4
May	246,988	262,483	6.3	1,251,933	1,271,139	1.5
Jun	234,934	253,920	8.1	1,486,867	1,525,059	2.6
Jul	228,220			1,715,087		
Aug	232,497			1,947,584		
Sep	225,064			2,172,648		
Oct	235,938			2,408,586		
Nov	249,669			2,658,255		
Dec	258,281			2,916,536		
Other Italian						
Jan	62,367	65,790	5.5	62,367	65,790	5.5
Feb	59,366	62,498	5.3	121,733	128,288	5.4
Mar	69,259	71,045	2.6	190,992	199,333	4.4
Apr	59,378	64,914	9.3	250,370	264,247	5.5
May	57,240	66,785	16.7	307,610	331,032	7.6
Jun	57,012	63,500	11.4	364,622	394,532	8.2
Jul	60,520			425,142		
Aug	64,015			489,157		
Sep	62,506			551,663		
Oct	65,043			616,706		
Nov	63,637			680,343		
Dec	63,411			743,754		

See footnote(s) at end of table.

--continued

**Dairy Products: Production by Product and Month,
United States, 2004-2005 ¹ (continued)**

Product and Month	By Month			Cumulative		
	2004	2005	Change From 2004	2004	2005	Change From 2004
	<i>1,000 Pounds</i>	<i>1,000 Pounds</i>	<i>Percent</i>	<i>1,000 Pounds</i>	<i>1,000 Pounds</i>	<i>Percent</i>
Butter						
Jan	129,346	128,653	-0.5	129,346	128,653	-0.5
Feb	108,593	113,492	4.5	237,939	242,145	1.8
Mar	100,383	122,135	21.7	338,322	364,280	7.7
Apr	100,324	115,659	15.3	438,646	479,939	9.4
May	110,120	119,508	8.5	548,766	599,447	9.2
Jun	99,156	104,265	5.2	647,922	703,712	8.6
Jul	92,615			740,537		
Aug	90,329			830,866		
Sep	94,242			925,108		
Oct	104,386			1,029,494		
Nov	101,376			1,130,870		
Dec	118,808			1,249,678		
Nonfat Dry Milk, Human						
Jan	129,320	93,775	-27.5	129,320	93,775	-27.5
Feb	115,769	94,334	-18.5	245,089	188,109	-23.2
Mar	117,981	109,049	-7.6	363,070	297,158	-18.2
Apr	134,011	111,223	-17.0	497,081	408,381	-17.8
May	151,291	124,105	-18.0	648,372	532,486	-17.9
Jun	144,095	125,231	-13.1	792,467	657,717	-17.0
Jul	134,566			927,033		
Aug	113,617			1,040,650		
Sep	93,936			1,134,586		
Oct	94,814			1,229,400		
Nov	83,789			1,313,189		
Dec	93,201			1,406,390		
Total Dry Whey ³						
Jan	86,784	86,194	-0.7	86,784	86,194	-0.7
Feb	84,585	79,884	-5.6	171,369	166,078	-3.1
Mar	92,788	91,544	-1.3	264,157	257,622	-2.5
Apr	91,816	90,958	-0.9	355,973	348,580	-2.1
May	90,215	93,158	3.3	446,188	441,738	-1.0
Jun	86,681	89,680	3.5	532,869	531,418	-0.3
Jul	83,065			615,934		
Aug	86,673			702,607		
Sep	80,239			782,846		
Oct	80,884			863,730		
Nov	83,609			947,339		
Dec	87,559			1,034,898		

See footnote(s) at end of table.

--continued

**Dairy Products: Production by Product and Month,
United States, 2004-2005 ¹ (continued)**

Product and Month	By Month			Cumulative		
	2004	2005	Change From 2004	2004	2005	Change From 2004
	<i>1,000 Pounds</i>	<i>1,000 Pounds</i>	<i>Percent</i>	<i>1,000 Pounds</i>	<i>1,000 Pounds</i>	<i>Percent</i>
Cream Cottage Cheese						
Jan	32,541	29,496	-9.4	32,541	29,496	-9.4
Feb	30,439	27,939	-8.2	62,980	57,435	-8.8
Mar	34,783	32,532	-6.5	97,763	89,967	-8.0
Apr	31,113	30,437	-2.2	128,876	120,404	-6.6
May	30,406	31,454	3.4	159,282	151,858	-4.7
Jun	30,862	31,206	1.1	190,144	183,064	-3.7
Jul	32,752			222,896		
Aug	33,029			255,925		
Sep	32,130			288,055		
Oct	30,838			318,893		
Nov	30,298			349,191		
Dec	28,038			377,229		
Lowfat Cottage Cheese						
Jan	32,847	29,468	-10.3	32,847	29,468	-10.3
Feb	31,469	31,520	0.2	64,316	60,988	-5.2
Mar	36,032	33,230	-7.8	100,348	94,218	-6.1
Apr	32,158	32,589	1.3	132,506	126,807	-4.3
May	34,149	34,758	1.8	166,655	161,565	-3.1
Jun	34,236	34,185	-0.1	200,891	195,750	-2.6
Jul	32,462			233,353		
Aug	33,972			267,325		
Sep	34,435			301,760		
Oct	31,112			332,872		
Nov	30,599			363,471		
Dec	27,748			391,219		
	<i>1,000 Gallons</i>	<i>1,000 Gallons</i>	<i>Percent</i>	<i>1,000 Gallons</i>	<i>1,000 Gallons</i>	<i>Percent</i>
Ice Cream, Hard						
Jan	60,148	60,440	0.5	60,148	60,440	0.5
Feb	64,848	64,240	-0.9	124,996	124,680	-0.3
Mar	78,409	78,232	-0.2	203,405	202,912	-0.2
Apr	76,836	77,426	0.8	280,241	280,338	
May	74,378	79,510	6.9	354,619	359,848	1.5
Jun	85,245	90,324	6.0	439,864	450,172	2.3
Jul	77,886			517,750		
Aug	73,697			591,447		
Sep	70,776			662,223		
Oct	68,134			730,357		
Nov	59,116			789,473		
Dec	55,193			844,666		

See footnote(s) at end of table.

--continued

**Dairy Products: Production by Product and Month,
United States, 2004-2005 ¹ (continued)**

Product and Month	By Month			Cumulative		
	2004	2005	Change From 2004	2004	2005	Change From 2004
	<i>1,000 Gallons</i>	<i>1,000 Gallons</i>	<i>Percent</i>	<i>1,000 Gallons</i>	<i>1,000 Gallons</i>	<i>Percent</i>
Ice Cream, Lowfat						
Jan	26,381	27,079	2.6	26,381	27,079	2.6
Feb	28,440	28,083	-1.3	54,821	55,162	0.6
Mar	37,856	36,580	-3.4	92,677	91,742	-1.0
Apr	39,687	35,701	-10.0	132,364	127,443	-3.7
May	38,796	35,568	-8.3	171,160	163,011	-4.8
Jun	41,920	41,460	-1.1	213,080	204,471	-4.0
Jul	42,430			255,510		
Aug	39,329			294,839		
Sep	34,495			329,334		
Oct	31,233			360,567		
Nov	27,363			387,930		
Dec	27,544			415,474		
Ice Cream, NF, Hard						
Jan	1,359	1,164	-14.3	1,359	1,164	-14.3
Feb	1,462	1,619	10.7	2,821	2,783	-1.3
Mar	1,669	1,670	0.1	4,490	4,453	-0.8
Apr	2,009	1,642	-18.3	6,499	6,095	-6.2
May	1,757	1,745	-0.7	8,256	7,840	-5.0
Jun	1,904	1,864	-2.1	10,160	9,704	-4.5
Jul	1,725			11,885		
Aug	1,708			13,593		
Sep	1,455			15,048		
Oct	1,630			16,678		
Nov	1,118			17,796		
Dec	1,281			19,077		
Sherbet, Hard						
Jan	3,558	4,194	17.9	3,558	4,194	17.9
Feb	3,837	4,116	7.3	7,395	8,310	12.4
Mar	5,295	4,915	-7.2	12,690	13,225	4.2
Apr	4,665	5,047	8.2	17,355	18,272	5.3
May	4,714	5,022	6.5	22,069	23,294	5.6
Jun	5,602	5,796	3.5	27,671	29,090	5.1
Jul	4,700			32,371		
Aug	4,690			37,061		
Sep	4,214			41,275		
Oct	3,638			44,913		
Nov	3,434			48,347		
Dec	2,920			51,267		

See footnote(s) at end of table.

--continued

**Dairy Products: Production by Product and Month,
United States, 2004-2005 (continued)**

Product and Month	By Month			Cumulative		
	2004	2005	Change From 2004	2004	2005	Change From 2004
	<i>1,000 Pounds</i>	<i>1,000 Pounds</i>	<i>Percent</i>	<i>1,000 Pounds</i>	<i>1,000 Pounds</i>	<i>Percent</i>
Sour Cream						
Jan	75,950	76,883	1.2	75,950	76,883	1.2
Feb	69,869	75,324	7.8	145,819	152,207	4.4
Mar	84,898	87,189	2.7	230,717	239,396	3.8
Apr	74,707	72,041	-3.6	305,424	311,437	2.0
May	75,132	85,130	13.3	380,556	396,567	4.2
Jun	80,905	84,572	4.5	461,461	481,139	4.3
Jul	76,850			538,311		
Aug	82,337			620,648		
Sep	77,726			698,374		
Oct	83,612			781,986		
Nov	104,098			886,084		
Dec	94,078			980,162		

See footnote(s) at end of table.

--continued

**Dairy Products: Production by Product and Month,
United States, 2004-2005 (continued)**

Product and Month	By Month			Cumulative		
	2004	2005	Change From 2004	2004	2005	Change From 2004
	<i>1,000 Pounds</i>	<i>1,000 Pounds</i>	<i>Percent</i>	<i>1,000 Pounds</i>	<i>1,000 Pounds</i>	<i>Percent</i>
Yogurt						
Jan	217,302	223,206	2.7	217,302	223,206	2.7
Feb	216,153	237,598	9.9	433,455	460,804	6.3
Mar	247,890	265,285	7.0	681,345	726,089	6.6
Apr	226,545	251,984	11.2	907,890	978,073	7.7
May	242,139	262,207	8.3	1,150,029	1,240,280	7.8
Jun	241,514	257,305	6.5	1,391,543	1,497,585	7.6
Jul	212,831			1,604,374		
Aug	230,018			1,834,392		
Sep	243,742			2,078,134		
Oct	223,663			2,301,797		
Nov	193,091			2,494,888		
Dec	213,766			2,708,654		

See footnote(s) at end of table.

--continued

**Dairy Products: Production by Product and Month,
United States, 2004-2005 ¹ (continued)**

Product and Month	By Month			Cumulative		
	2004	2005	Change From 2004	2004	2005	Change From 2004
	<i>1,000 Gallons</i>	<i>1,000 Gallons</i>	<i>Percent</i>	<i>1,000 Gallons</i>	<i>1,000 Gallons</i>	<i>Percent</i>
Frozen Yogurt						
Jan	5,141	4,299	-16.4	5,141	4,299	-16.4
Feb	5,448	4,457	-18.2	10,589	8,756	-17.3
Mar	6,269	6,010	-4.1	16,858	14,766	-12.4
Apr	6,369	5,345	-16.1	23,227	20,111	-13.4
May	6,148	6,241	1.5	29,375	26,352	-10.3
Jun	6,580	6,013	-8.6	35,955	32,365	-10.0
Jul	5,704			41,659		
Aug	6,137			47,796		
Sep	5,753			53,549		
Oct	5,270			58,819		
Nov	4,705			63,524		
Dec	4,148			67,672		

¹ May 2005 data revised.

² Monthly 2004 data revised. January 2005 data revised.

³ Excludes all modified dry whey products.

**Total Cheese, Excluding Cottage Cheese: Production by
State and United States, June 2004-2005**

State	Jun 2004	May ¹ 2005	Jun 2005	Change From	
				Jun 2004	May 2005
	<i>1,000 Pounds</i>	<i>1,000 Pounds</i>	<i>1,000 Pounds</i>	<i>Percent</i>	<i>Percent</i>
CA	160,428	187,407	180,783	12.7	-3.5
ID	57,124				
IL	7,738	7,981	7,831	1.2	-1.9
IA	12,968	13,945	13,068	0.8	-6.3
MA	73	58	51	-30.1	-12.1
MN	53,445	55,328	52,594	-1.6	-4.9
MO	7,298				
NY	52,980	56,789	55,109	4.0	-3.0
OH	14,771	16,906	16,684	13.0	-1.3
PA	31,892	34,227	35,381	10.9	3.4
SD	12,063	14,625	14,458	19.9	-1.1
UT	5,996	6,043	5,954	-0.7	-1.5
WI	188,274	202,605	201,138	6.8	-0.7
Oth Sts ²	110,281	189,625	177,981	61.4	-6.1
US	715,331	785,539	761,032	6.4	-3.1
N Atlantic	99,138	107,043	104,570	5.5	-2.3
S Atlantic	2,583	4,761	2,614	1.2	-45.1
E N Central	223,563	241,970	239,371	7.1	-1.1
W N Central	88,996	90,731	86,353	-3.0	-4.8
S Central	7,931	8,412	9,416	18.7	11.9
West	293,120	332,622	318,708	8.7	-4.2

¹ Revised.

² States not shown when fewer than 3 plants reported or individual plant operations could be disclosed. Percent change shown only when comparable States are included in the calculation.

American Cheese: Production by State and United States, June 2004-2005

State	Jun 2004	May ¹ 2005	Jun 2005	Change From	
				Jun 2004	May 2005
	<i>1,000 Pounds</i>	<i>1,000 Pounds</i>	<i>1,000 Pounds</i>	<i>Percent</i>	<i>Percent</i>
CA	66,566	76,658	73,303	10.1	-4.4
IA	10,232	10,984	10,182	-0.5	-7.3
MN	51,300	51,881	49,219	-4.1	-5.1
NY	7,876	6,087	5,771	-26.7	-5.2
OH	2,747	3,366	3,994	45.4	18.7
OR	8,287	10,115	9,568	15.5	-5.4
WI	71,111	75,116	73,420	3.2	-2.3
Oth Sts ²	90,389	98,614	95,556	5.7	-3.1
US	308,517	332,821	321,013	4.1	-3.5
Atlantic	12,470	13,004	11,038	-11.5	-15.1
E N Central	74,636	79,505	78,328	4.9	-1.5
W N Central	69,111	71,039	67,572	-2.2	-4.9
S Central	4,670	3,608	3,850	-17.6	6.7
West	147,630	165,665	160,225	8.5	-3.3

¹ Revised.

² States not shown when fewer than 3 plants reported or individual plant operations could be disclosed. Percent change shown only when comparable States are included in the calculation.

Cheddar Cheese: Production by State and United States, June 2004-2005

State	Jun ¹ 2004	May ² 2005	Jun 2005	Change From	
				Jun 2004	May 2005
	<i>1,000 Pounds</i>	<i>1,000 Pounds</i>	<i>1,000 Pounds</i>	<i>Percent</i>	<i>Percent</i>
CA	43,304	46,374	45,071	4.1	-2.8
MN	46,785	48,007	45,379	-3.0	-5.5
NY	7,773	5,967	5,655	-27.2	-5.2
WI	55,398	60,660	57,990	4.7	-4.4
Oth Sts ³	87,232	105,535	103,641	18.8	-1.8
US	249,420	266,543	257,736	3.3	-3.3
Atlantic	11,939	12,010	10,007	-16.2	-16.7
E N Cen	57,540	62,940	60,935	5.9	-3.2
W N Cen	59,582	60,971	58,380	-2.0	-4.2
S Cen	4,670	3,608	3,850	-17.6	6.7
West	115,689	127,014	124,564	7.7	-1.9

¹ Revised 2004 Cheddar Cheese data released in the May 5, 2005 Dairy Products Report.

² Revised.

³ States not shown when fewer than 3 plants reported or individual plant operations could be disclosed. Percent change shown only when comparable States are included in the calculation.

Mozzarella Cheese: Production by State and United States, June 2004-2005

State	Jun 2004	May ¹ 2005	Jun 2005	Change From	
				Jun 2004	May 2005
	<i>1,000 Pounds</i>	<i>1,000 Pounds</i>	<i>1,000 Pounds</i>	<i>Percent</i>	<i>Percent</i>
CA	70,509	81,377	81,657	15.8	0.3
NY	14,145	15,964	16,348	15.6	2.4
PA	17,612	18,275	18,826	6.9	3.0
WI	64,333	67,474	66,450	3.3	-1.5
Oth Sts ²	68,335	79,393	70,639	3.4	-11.0
US	234,934	262,483	253,920	8.1	-3.3
Atlantic ³	38,946	43,843	42,091	8.1	-4.0
E N Central	76,418	80,945	79,221	3.7	-2.1
West	112,863	128,957	123,910	9.8	-3.9

¹ Revised.

² States not shown when fewer than 3 plants reported or individual plant operations could be disclosed. Percent change shown only when comparable States are included in the calculation.

³ Region totals may not add to U.S. when compiled regions could not be disclosed.

Butter: Production by State and United States, June 2004-2005

State	Jun 2004	May ¹ 2005	Jun 2005	Change From	
				Jun 2004	May 2005
	<i>1,000 Pounds</i>	<i>1,000 Pounds</i>	<i>1,000 Pounds</i>	<i>Percent</i>	<i>Percent</i>
CA	29,976	30,904	32,218	7.5	4.3
NY	1,501	1,766	1,841	22.7	4.2
PA	5,527	6,870	6,226	12.6	-9.4
WI	25,598	37,564	28,900	12.9	-23.1
Oth Sts ²	36,554	42,404	35,080	-4.0	-17.3
US	99,156	119,508	104,265	5.2	-12.8
N Atlantic ³	10,445	12,049	10,393	-0.5	-13.7
E N Central	26,886	39,691	29,840	11.0	-24.8
W N Central	9,413	6,268	5,256	-44.2	-16.1
West	43,083	47,013	48,649	12.9	3.5

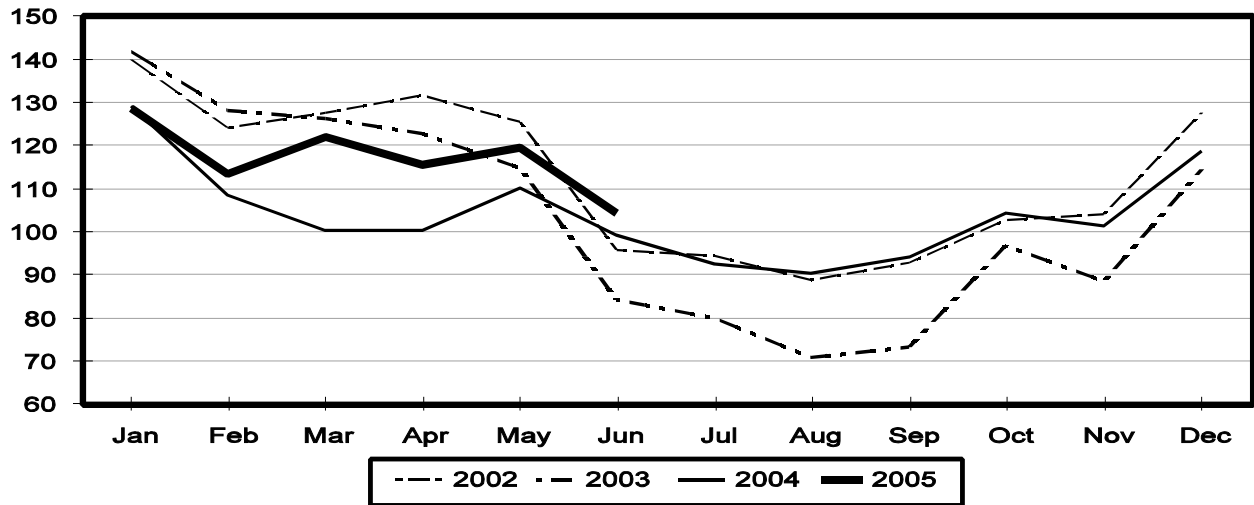
¹ Revised.

² States not shown when fewer than 3 plants reported or individual plant operations could be disclosed. Percent change shown only when comparable States are included in the calculation.

³ Region totals may not add to U.S. when compiled regions could not be disclosed.

Total Butter Production United States

Million Pounds



**Nonfat Dry Milk, Human: Production by State
and United States, June 2004-2005**

State	Jun 2004	May ¹ 2005	Jun 2005	Change From	
				Jun 2004	May 2005
	<i>1,000 Pounds</i>	<i>1,000 Pounds</i>	<i>1,000 Pounds</i>	<i>Percent</i>	<i>Percent</i>
CA	68,152	42,923	46,887	-31.2	9.2
PA	8,949	12,399	13,255	48.1	6.9
Oth Sts ²	66,923	68,783	65,089	-2.7	-5.4
US	144,095	124,105	125,231	-13.1	0.9
Atlantic	18,298	25,470	24,549	34.2	-3.6
E N Central	5,841	6,512	6,396	9.5	-1.8
W N Central	7,220	7,833	8,109	12.3	3.5
S Central	7,686	9,598	8,490	10.5	-11.5
West	105,050	74,692	77,687	-26.0	4.0

¹ Revised.

² States not shown when fewer than 3 plants reported or individual plant operations could be disclosed. Percent change shown only when comparable States are included in the calculation.

**Dry Whey, Human: Production by State
and United States, June 2004-2005**

State	Jun 2004	May ¹ 2005	Jun 2005	Change From	
				Jun 2004	May 2005
	<i>1,000 Pounds</i>	<i>1,000 Pounds</i>	<i>1,000 Pounds</i>	<i>Percent</i>	<i>Percent</i>
CA	9,205	10,497	10,033	9.0	-4.4
MN		4,513	3,974		-11.9
NY	10,021	11,098	10,556	5.3	-4.9
PA	8,452	8,812	8,580	1.5	-2.6
UT	2,098	2,187	1,903	-9.3	-13.0
WI	24,730	25,373	25,055	1.3	-1.3
Oth Sts ²	24,665	23,229	21,496	-12.8	-7.5
US	79,171	85,709	81,597	3.1	-4.8
Atlantic	18,473	19,910	19,136	3.6	-3.9
Central	38,694	40,063	38,761	0.2	-3.2
West	22,004	25,736	23,700	7.7	-7.9

¹ Revised.

² States not shown when fewer than 3 plants reported or individual plant operations could be disclosed. Percent change shown only when comparable States are included in the calculation.

Ice Cream, Hard: Production by State and United States, June 2004-2005

State	Jun 2004	May ¹ 2005	Jun 2005	Change From	
				Jun 2004	May 2005
	<i>1,000 Gallons</i>	<i>1,000 Gallons</i>	<i>1,000 Gallons</i>	<i>Percent</i>	<i>Percent</i>
CA	12,041	11,821	14,255	18.4	20.6
FL	1,961	1,750	1,650	-15.9	-5.7
IL	3,945	3,535	4,173	5.8	18.0
IN	8,683	7,427	8,253	-5.0	11.1
MD	1,709	1,688	1,709		1.2
MA	5,040	4,488	4,442	-11.9	-1.0
MI	1,439	1,428	1,528	6.2	7.0
MN	4,458	3,871	4,881	9.5	26.1
MO	1,984	2,047	2,375	19.7	16.0
NY	3,000	2,641	2,822	-5.9	6.9
NC	1,742	1,552	1,629	-6.5	5.0
OH	2,289	2,280	2,743	19.8	20.3
OR	1,419	1,144	1,060	-25.3	-7.3
PA	4,985	3,576	4,592	-7.9	28.4
TN	1,472	1,507	1,568	6.5	4.0
TX	3,940	5,237	5,380	36.5	2.7
UT	2,503	2,485	2,720	8.7	9.5
Oth Sts ²	22,635	21,033	24,544	8.4	16.7
US	85,245	79,510	90,324	6.0	13.6
N Atlantic	16,111	14,340	16,831	4.5	17.4
S Atlantic	6,573	6,594	6,576		-0.3
E N Central	17,422	15,540	17,522	0.6	12.8
W N Central	15,518	13,221	16,246	4.7	22.9
S Central	9,856	10,855	11,449	16.2	5.5
West	19,765	18,960	21,700	9.8	14.5

¹ Revised.

² States not shown when fewer than 3 plants reported or individual plant operations could be disclosed. Percent change shown only when comparable States are included in the calculation.

**Canned Milk and Dry Milk Products: Manufacturers' Shipments,
and Stocks, June, 2004-2005**

Product	Jun 2004	May 2005 ¹	Jun 2005	Change From	
				Jun 2004	May 2005
	Manufacturers' Shipments²				
	<i>1,000 Pounds</i>	<i>1,000 Pounds</i>	<i>1,000 Pounds</i>	<i>Percent</i>	<i>Percent</i>
Nonfat Dry Milk, Human	127,430	113,719	109,746	-13.9	-3.5
	Manufacturers' Stocks End-of-Month³				
	<i>1,000 Pounds</i>	<i>1,000 Pounds</i>	<i>1,000 Pounds</i>	<i>Percent</i>	<i>Percent</i>
Canned Evaporated and Condensed Whole Milk	68,280	69,945	70,957	3.9	1.4
Nonfat Dry Milk, Human	146,588	112,627	116,990	-20.2	3.9
Dry Buttermilk, Total	5,143	9,728	9,468	84.1	-2.7

¹ Revised.

² For dry products, shipments of bulk goods only.

³ Stocks held by manufacturers at all points and in transit.

Procedures and Reliability: Estimates included in this report are based on data provided each month by manufacturers of these products. In 32 States, the State Departments of Agriculture assist in collection of data, which eliminates duplicate reporting and reduces respondent burden. Data are collected by mail, personal and telephone interviews following the close of each month. There were 1,096 manufacturers that made one or more products in 2004. Each month, reports are generally received from all dairy plants in States with small numbers of plants. In States with large numbers of plants, survey procedures are designed to obtain monthly reports from all large plants and from a sample of small plants. Monthly estimates are based upon returns from about 70 percent of the plants which account for 70 to 90 percent of the total production of major dairy products.

Revision Policy: Monthly estimates are subject to revision the month following the preliminary estimates. Annual estimates are published in the "**Dairy Products**" report published each April which includes any revisions made to current and previous year. An attempt is made to get information from all plants for preparing these estimates

ACCESS TO REPORTS!!

For your convenience, there are several ways to obtain NASS reports, data products, and services:

INTERNET ACCESS

All NASS reports are available free of charge on the worldwide Internet. For access, connect to the Internet and go to the NASS Home Page at: www.usda.gov/nass/. Select "Today's Reports" or Publications and then Reports Calendar or Publications and then Search, by Title or Subject.

E-MAIL SUBSCRIPTION

All NASS reports are available by subscription free of charge direct to your e-mail address. Starting with the NASS Home Page at www.usda.gov/nass/, click on **Publications**, then click on the **Subscribe by E-mail** button which takes you to the page describing e-mail delivery of reports. Finally, click on **Go to the Subscription Page** and follow the instructions.

PRINTED REPORTS OR DATA PRODUCTS

CALL OUR TOLL-FREE ORDER DESK: 800-999-6779 (U.S. and Canada)
Other areas, please call 703-605-6220 FAX: 703-605-6900
(Visa, MasterCard, check, or money order acceptable for payment.)

ASSISTANCE

For **assistance** with general agricultural statistics or further information about NASS or its products or services, contact the **Agricultural Statistics Hotline** at **800-727-9540**, 7:30 a.m. to 4:00 p.m. ET, or e-mail: nass@nass.usda.gov.

The U.S. Department of Agriculture (USDA) prohibits discrimination in all its programs and activities on the basis of race, color, national origin, sex, religion, age, disability, political beliefs, sexual orientation, and marital or family status. (Not all prohibited bases apply to all programs.) Persons with disabilities who require alternative means for communication of program information (Braille, large print, audiotape, etc.) should contact USDA's TARGET Center at 202-720-2600 (voice and TDD).

To file a complaint of discrimination, write USDA, Director, Office of Civil Rights, Room 326-W, Whitten Building, 14th and Independence Avenue, SW, Washington, DC 20250-9410 or call 202-720-5964 (voice and TDD). USDA is an equal opportunity provider and employer.