



NASS

FACT FINDERS FOR AGRICULTURE
UNITED STATES DEPARTMENT OF AGRICULTURE

Washington, D.C.

Dairy Products

Released October 4, 2005, by the National Agricultural Statistics Service (NASS), Agricultural Statistics Board, U.S. Department of Agriculture. For information on *Dairy Products* call Shawn Clark at (202) 690-3236, office hours 7:30 a.m. to 4:00 p.m. ET.

Special Note

Beginning with this release, data will be published for Whey Protein Concentrates and Isolates (25.0-49.9 percent, 50.0-89.9 percent, and 90.0 percent or greater, see page 2). Also, included in this release are historic data from 2003 to present, which can be found on pages 16-20.

August 2005 Highlights

Total cheese output (excluding cottage cheese) was 748 million pounds, 4.0 percent above August 2004 and 1.4 percent above July 2005.

American type cheese production totaled 309 million pounds, 2.7 percent above August 2004 but 2.7 percent below July 2005.

Butter production was 91.4 million pounds in July, 1.2 percent above August 2004 but 4.1 percent below July 2005.

Frozen dessert: (comparisons with August 2004)

Ice cream, Regular (hard) --- 89.4 million gallons, up 21.3 percent.

Ice cream, Lowfat (total) --- 40.3 million gallons, up 2.4 percent.

Ice cream, Nonfat (hard) --- 1.83 million gallons, up 7.1 percent.

Sherbet (hard) --- 5.68 million gallons, up 21.0 percent.

Frozen Yogurt (total) --- 5.95 million gallons, down 3.0 percent.

Nonfat dry milk for human food: (compared with August 2004) --- 87.6 million pounds, down 22.9 percent.

Dry whey products: (comparisons with August 2004)

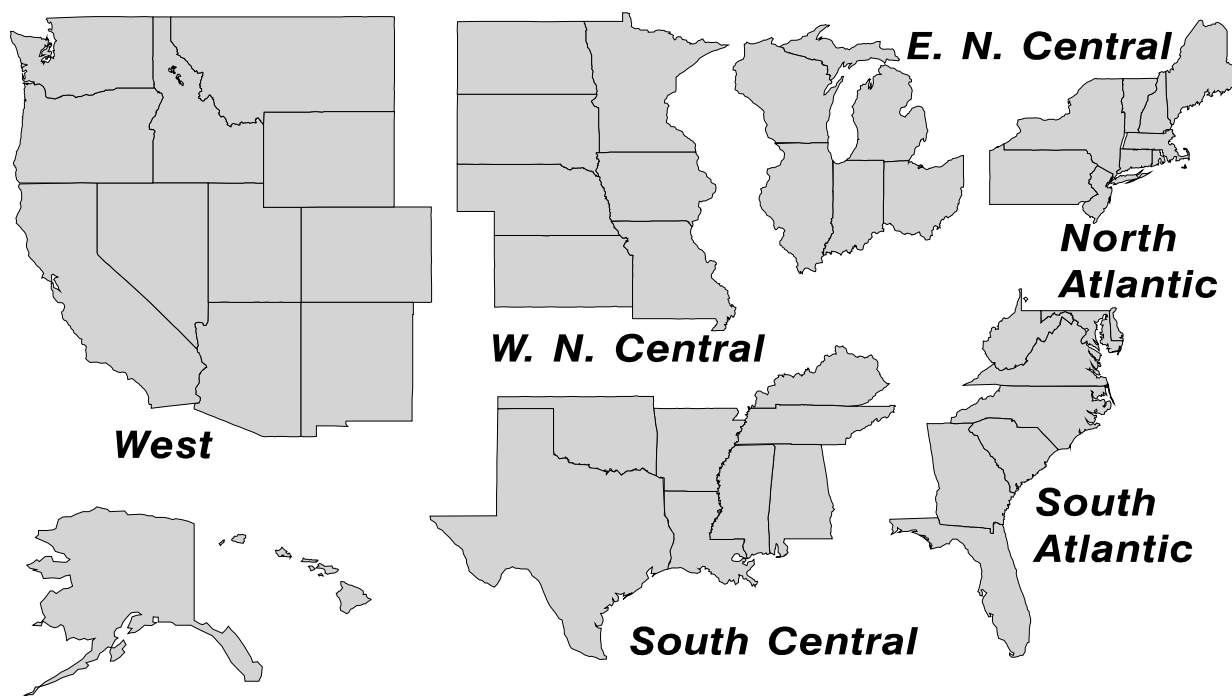
Dry whey, human --- 79.5 million pounds, down 1 percent.

Dry whey, animal --- 7.05 million pounds, up 7.1 percent.

Dry whey, total --- 86.6 million pounds, down 0.1 percent.

U. S. Geographic Regions Dairy Products

State totals are not published when fewer than 3 firms have reported or one firm comprises more than 60 percent of the State total. If we are not able to publish a region for confidentiality reasons, it will be combined with other regions when possible. For example, if North Atlantic can not be published, then it will be combined with South Atlantic to publish Atlantic. The West North Central and East North Central will be combined, if necessary, to form North Central. In the event that neither could be published, they may be combined with South Central to publish Central. Some tables will have only limited regions shown, therefore the regions may not add to the United States total.

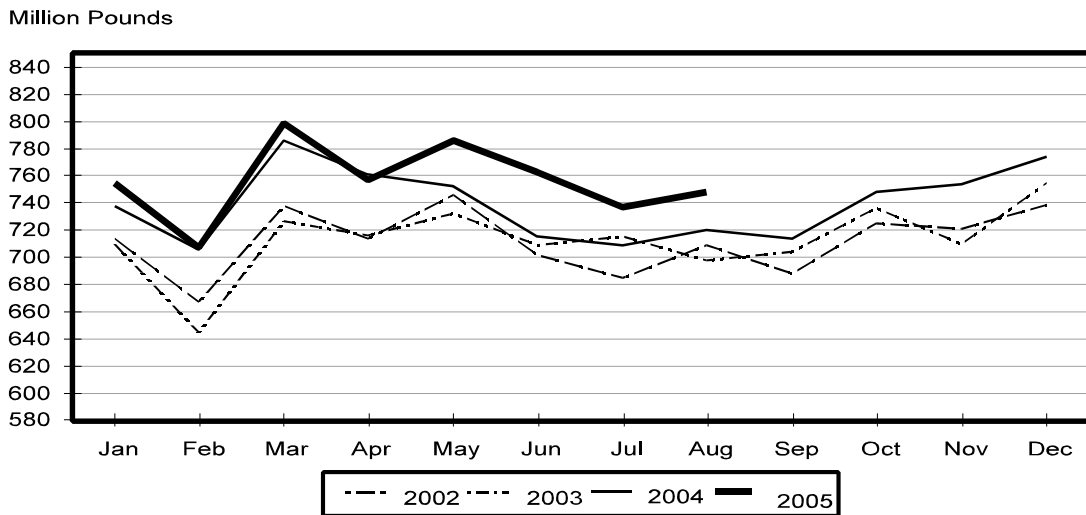


Contents

Page

Dairy Products: Production by Product, United States, August, 2004-2005	1
Whey and Modified Whey Products: Production, Stocks, and Prices, United States, August, 2004-2005	2
Dairy Products: Production by Product and Month, United States, 2004-2005	3
Select Commodities by State and United States, August, 2004-2005	10
Canned Milk and Dry Milk Products: Manufacturer's Shipments, Stocks, and Selling Prices, August, 2004-2005	15
Manufacturers Whey Stocks and Selling Prices, United States 2003-2005	16
Procedures and Reliability	21

Total Cheese Production United States



**Dairy Products: Production by Product,
United States, August, 2004-2005**

Product	Aug 2004	Jul 2005 ¹	Aug 2005	Change From	
				Aug 2004	Jul 2005
	<i>1,000 Pounds</i>	<i>1,000 Pounds</i>	<i>1,000 Pounds</i>	<i>Percent</i>	<i>Percent</i>
Butter	90,329	95,310	91,434	1.2	-4.1
Cheese					
American Types ²	300,384	317,037	308,622	2.7	-2.7
Cheddar ³	237,758	253,813	242,006	1.8	-4.7
Swiss	23,155	24,896	24,807	7.1	-0.4
Brick and Muenster	6,556	6,150	6,502	-0.8	5.7
Cream and Neufchatel	59,231	54,338	61,076	3.1	12.4
Hispanic	11,761	12,947	13,737	16.8	6.1
Mozzarella	232,497	242,877	244,613	5.2	0.7
Other Italian Types	64,015	58,094	67,043	4.7	15.4
Total Italian Types	296,512	300,971	311,656	5.1	3.6
All Other Types	21,939	21,374	21,642	-1.4	1.3
Total	719,538	737,713	748,042	4.0	1.4
Cottage Cheese, Curd ⁴	39,184	38,232	42,017	7.2	9.9
Cottage Cheese, Cream ⁵	33,029	31,935	33,824	2.4	5.9
Cottage Cheese, Lowfat ⁶	33,972	31,966	36,375	7.1	13.8
Canned Evaporated and Condensed Whole Milk	37,731	40,697	41,587	10.2	2.2
Dry Whole Milk	3,111	1,994	2,418	-22.3	21.3
Nonfat Dry Milk, Human	113,617	110,667	87,569	-22.9	-20.9
Dry Skim Milk, Animal	522	498	512	-1.9	2.8
Dry Buttermilk	3,364	4,013	2,931	-12.9	-27.0
Sour Cream	82,337	77,890	91,783	11.5	17.8
Yogurt, Plain & Flavored	230,018	227,077	249,507	8.5	9.9
	<i>1,000 Gallons</i>	<i>1,000 Gallons</i>	<i>1,000 Gallons</i>	<i>Percent</i>	<i>Percent</i>
Frozen Products					
Ice Cream, Hard	73,697	87,648	89,421	21.3	2.0
Ice Cream, Lowfat, Hard	9,980	10,785	11,262	12.8	4.4
Ice Cream, Lowfat, Soft	29,349	28,629	29,004	-1.2	1.3
Ice Cream, Lowfat, Total	39,329	39,414	40,266	2.4	2.2
Ice Cream, Nonfat, Hard	1,708	1,966	1,829	7.1	-7.0
Sherbet, Hard	4,690	5,408	5,675	21.0	4.9
Water and Juice Ices	5,934	6,894	6,232	5.0	-9.6
Frozen Yogurt, Total	6,137	5,600	5,952	-3.0	6.3
Regular & Lowfat, Hard	1,787	1,661	1,802	0.8	8.5
Nonfat, Hard	996	1,097	1,044	4.8	-4.8
Other Frozen Dairy Products	717	908	895	24.8	-1.4
Mix for Frozen Products					
Ice Cream Mix	42,376	49,360	48,298	14.0	-2.2
Ice Cream, Lowfat, Mix	21,632	21,851	22,314	3.2	2.1
Ice Cream, Nonfat, Mix	1,210	1,431	1,364	12.7	-4.7
Sherbet Mix	3,352	3,980	3,859	15.1	-3.0
Yogurt Mix	3,611	3,294	3,501	-3.0	6.3

¹ Revised.

² Includes Cheddar, Colby, Monterey, and Jack.

³ Revised 2004 Cheddar Cheese data released in the May 5, 2005 Dairy Products Report.

⁴ Mostly used for processing into cream or lowfat cottage cheese.

⁵ Fat content 4 percent or more.

⁶ Fat content less than 4 percent.

**Whey and Modified Whey Products: Production, Stocks,
and Prices, United States, August, 2004-2005**

Product	Aug 2004	Jul 2005 ¹	Aug 2005	Change From	
				Aug 2004	Jul 2005
Production					
	<i>1,000 Pounds</i>	<i>1,000 Pounds</i>	<i>1,000 Pounds</i>	<i>Percent</i>	<i>Percent</i>
Condensed Whey, Solids Content ²					
Sweet-Type, Human	7,007	6,759	6,465	-7.7	-4.3
Dry Whey Products					
Dry Whey, Human	80,092	81,389	79,521	-0.7	-2.3
Dry Whey, Animal	6,581	7,872	7,046	7.1	-10.5
Dry Whey, Total	86,673	89,261	86,567	-0.1	-3.0
Reduced Lactose and Minerals					
Human Food	3,424	4,300	3,755	9.7	-12.7
Animal Feed	3,744	5,637	3,936	5.1	-30.2
Lactose, Human and Animal	54,615	55,082	54,038	-1.1	-1.9
Whey					
Protein Concentrate					
Human ³	24,065	26,783	23,220	-3.5	-13.3
Animal ³	5,097	4,301	4,343	-14.8	1.0
Total ³	29,162	31,084	27,563	-5.5	-11.3
25.0-49.9 Percent ⁴	22,761	22,302	20,985	-7.8	-5.9
50.0-89.9 Percent ⁴	6,401	8,782	6,578	2.8	-25.1
Protein Isolates ⁵	2,284	2,353	2,137	-6.4	-9.2
Manufacturers' Stocks End-of-Month ⁶					
	<i>1,000 Pounds</i>	<i>1,000 Pounds</i>	<i>1,000 Pounds</i>	<i>Percent</i>	<i>Percent</i>
Dry Whey Products					
Dry Whey, Human	43,389	35,648	31,254	-28.0	-12.3
Dry Whey, Animal	5,784	3,987	2,787	-51.8	-30.1
Dry Whey, Total	49,173	39,635	34,041	-30.8	-14.1
Reduced Lactose and Minerals					
Human and Animal ⁷	6,749	4,570	5,342	-20.8	16.9
Lactose, Human and Animal	70,309	57,998	48,631	-30.8	-16.2
Whey					
Protein Concentrate					
Human ³	24,391	24,269	23,391	-4.1	-3.6
Animal ³	3,267	1,990	2,224	-31.9	11.8
Total ³	27,658	26,259	25,615	-7.4	-2.5
25.0-49.9 Percent ⁴	19,714	16,208	16,388	-16.9	1.1
50.0-89.9 Percent ⁴	7,944	10,051	9,227	16.2	-16.4
Manufacturers' Selling Price ⁸					
	<i>Cents per Pound</i>	<i>Cents per Pound</i>	<i>Cents per Pound</i>	<i>Cents Change</i>	<i>Cents Change</i>
Dry Whey, Animal	20.7	25.2	26.4	5.7	1.2

¹ Revised.

² Final marketable product only. Does not include quantity used or shipped to another plant for further processing into dry whey or modified whey products. Does not include sweet-type, animal whey.

³ Whey Protein Concentrate, 25.0 to 89.9 percent.

⁴ Whey Protein Concentrate, Human and Animal.

⁵ Whey Protein Isolate, 90.0 percent or greater.

⁶ Stocks held by manufacturers at all points and in transit.

⁷ Reduced lactose and minerals stocks combined to avoid disclosure of individual operations.

⁸ Prices for bulk goods, f.o.b. plant. Average monthly prices reported by firms.

**Dairy Products: Production by Product and Month,
United States, 2004-2005 ¹**

Product and Month	By Month			Cumulative		
	2004	2005	Change From 2004	2004	2005	Change From 2004
	<i>1,000 Pounds</i>	<i>1,000 Pounds</i>	<i>Percent</i>	<i>1,000 Pounds</i>	<i>1,000 Pounds</i>	<i>Percent</i>
Total Cheese						
Jan	737,997	754,684	2.3	737,997	754,684	2.3
Feb	705,525	707,365	0.3	1,443,522	1,462,049	1.3
Mar	785,626	799,304	1.7	2,229,148	2,261,353	1.4
Apr	761,046	756,908	-0.5	2,990,194	3,018,261	0.9
May	752,051	785,539	4.5	3,742,245	3,803,800	1.6
Jun	715,332	762,689	6.6	4,457,577	4,566,489	2.4
Jul	708,739	737,713	4.1	5,166,316	5,304,202	2.7
Aug	719,538	748,042	4.0	5,885,854	6,052,244	2.8
Sep	714,357			6,600,211		
Oct	748,044			7,348,255		
Nov	754,345			8,102,600		
Dec	773,863			8,876,463		
American Cheese						
Jan	318,986	322,188	1.0	318,986	322,188	1.0
Feb	295,990	293,137	-1.0	614,976	615,325	0.1
Mar	324,234	331,544	2.3	939,210	946,869	0.8
Apr	325,061	328,413	1.0	1,264,271	1,275,282	0.9
May	332,481	332,821	0.1	1,596,752	1,608,103	0.7
Jun	308,517	321,604	4.2	1,905,269	1,929,707	1.3
Jul	302,724	317,037	4.7	2,207,993	2,246,744	1.8
Aug	300,384	308,622	2.7	2,508,377	2,555,366	1.9
Sep	294,368			2,802,745		
Oct	309,184			3,111,929		
Nov	302,611			3,414,540		
Dec	324,236			3,738,776		
Cheddar Cheese ²						
Jan	259,327	261,049	0.7	259,327	261,049	0.7
Feb	237,293	237,535	0.1	496,620	498,584	0.4
Mar	260,336	268,495	3.1	756,956	767,079	1.3
Apr	264,068	263,046	-0.4	1,021,024	1,030,125	0.9
May	272,736	266,543	-2.3	1,293,760	1,296,668	0.2
Jun	249,420	258,215	3.5	1,543,180	1,554,883	0.8
Jul	242,075	253,813	4.8	1,785,255	1,808,696	1.3
Aug	237,758	242,006	1.8	2,023,013	2,050,702	1.4
Sep	234,648			2,257,661		
Oct	245,489			2,503,150		
Nov	242,353			2,745,503		
Dec	258,924			3,004,427		

See footnote(s) at end of table.

--continued

**Dairy Products: Production by Product and Month,
United States, 2004-2005 ¹ (continued)**

Product and Month	By Month			Cumulative		
	2004	2005	Change From 2004	2004	2005	Change From 2004
	<i>1,000 Pounds</i>	<i>1,000 Pounds</i>	<i>Percent</i>	<i>1,000 Pounds</i>	<i>1,000 Pounds</i>	<i>Percent</i>
Italian Cheese						
Jan	310,574	317,189	2.1	310,574	317,189	2.1
Feb	300,625	301,788	0.4	611,199	618,977	1.3
Mar	334,041	340,532	1.9	945,240	959,509	1.5
Apr	310,075	313,394	1.1	1,255,315	1,272,903	1.4
May	304,228	329,268	8.2	1,559,543	1,602,171	2.7
Jun	291,946	320,911	9.9	1,851,489	1,923,082	3.9
Jul	288,740	300,971	4.2	2,140,229	2,224,053	3.9
Aug	296,512	311,656	5.1	2,436,741	2,535,709	4.1
Sep	287,570			2,724,311		
Oct	300,981			3,025,292		
Nov	313,306			3,338,598		
Dec	321,692			3,660,290		
Mozzarella						
Jan	248,207	251,399	1.3	248,207	251,399	1.3
Feb	241,259	239,290	-0.8	489,466	490,689	0.2
Mar	264,782	269,487	1.8	754,248	760,176	0.8
Apr	250,697	248,480	-0.9	1,004,945	1,008,656	0.4
May	246,988	262,483	6.3	1,251,933	1,271,139	1.5
Jun	234,934	254,662	8.4	1,486,867	1,525,801	2.6
Jul	228,220	242,877	6.4	1,715,087	1,768,678	3.1
Aug	232,497	244,613	5.2	1,947,584	2,013,291	3.4
Sep	225,064			2,172,648		
Oct	235,938			2,408,586		
Nov	249,669			2,658,255		
Dec	258,281			2,916,536		
Other Italian						
Jan	62,367	65,790	5.5	62,367	65,790	5.5
Feb	59,366	62,498	5.3	121,733	128,288	5.4
Mar	69,259	71,045	2.6	190,992	199,333	4.4
Apr	59,378	64,914	9.3	250,370	264,247	5.5
May	57,240	66,785	16.7	307,610	331,032	7.6
Jun	57,012	66,249	16.2	364,622	397,281	9.0
Jul	60,520	58,094	-4.0	425,142	455,375	7.1
Aug	64,015	67,043	4.7	489,157	522,418	6.8
Sep	62,506			551,663		
Oct	65,043			616,706		
Nov	63,637			680,343		
Dec	63,411			743,754		

See footnote(s) at end of table.

--continued

**Dairy Products: Production by Product and Month,
United States, 2004-2005 ¹ (continued)**

Product and Month	By Month			Cumulative		
	2004	2005	Change From 2004	2004	2005	Change From 2004
	<i>1,000 Pounds</i>	<i>1,000 Pounds</i>	<i>Percent</i>	<i>1,000 Pounds</i>	<i>1,000 Pounds</i>	<i>Percent</i>
Butter						
Jan	129,346	128,653	-0.5	129,346	128,653	-0.5
Feb	108,593	113,492	4.5	237,939	242,145	1.8
Mar	100,383	122,135	21.7	338,322	364,280	7.7
Apr	100,324	115,659	15.3	438,646	479,939	9.4
May	110,120	119,508	8.5	548,766	599,447	9.2
Jun	99,156	106,360	7.3	647,922	705,807	8.9
Jul	92,615	95,310	2.9	740,537	801,117	8.2
Aug	90,329	91,434	1.2	830,866	892,551	7.4
Sep	94,242			925,108		
Oct	104,386			1,029,494		
Nov	101,376			1,130,870		
Dec	118,808			1,249,678		
Nonfat Dry Milk, Human						
Jan	129,320	93,775	-27.5	129,320	93,775	-27.5
Feb	115,769	94,334	-18.5	245,089	188,109	-23.2
Mar	117,981	109,049	-7.6	363,070	297,158	-18.2
Apr	134,011	111,223	-17.0	497,081	408,381	-17.8
May	151,291	124,105	-18.0	648,372	532,486	-17.9
Jun	144,095	124,642	-13.5	792,467	657,128	-17.1
Jul	134,566	110,667	-17.8	927,033	767,795	-17.2
Aug	113,617	87,569	-22.9	1,040,650	855,364	-17.8
Sep	93,936			1,134,586		
Oct	94,814			1,229,400		
Nov	83,789			1,313,189		
Dec	93,201			1,406,390		
Total Dry Whey ³						
Jan	86,784	86,194	-0.7	86,784	86,194	-0.7
Feb	84,585	79,884	-5.6	171,369	166,078	-3.1
Mar	92,788	91,544	-1.3	264,157	257,622	-2.5
Apr	91,816	90,958	-0.9	355,973	348,580	-2.1
May	90,215	93,158	3.3	446,188	441,738	-1.0
Jun	86,681	89,588	3.4	532,869	531,326	-0.3
Jul	83,065	89,261	7.5	615,934	620,587	0.8
Aug	86,673	86,567	-0.1	702,607	707,154	0.6
Sep	80,239			782,846		
Oct	80,884			863,730		
Nov	83,609			947,339		
Dec	87,559			1,034,898		

See footnote(s) at end of table.

--continued

**Dairy Products: Production by Product and Month,
United States, 2004-2005 ¹ (continued)**

Product and Month	By Month			Cumulative		
	2004	2005	Change From 2004	2004	2005	Change From 2004
	<i>1,000 Pounds</i>	<i>1,000 Pounds</i>	<i>Percent</i>	<i>1,000 Pounds</i>	<i>1,000 Pounds</i>	<i>Percent</i>
Cream Cottage Cheese						
Jan	32,541	29,496	-9.4	32,541	29,496	-9.4
Feb	30,439	27,939	-8.2	62,980	57,435	-8.8
Mar	34,783	32,532	-6.5	97,763	89,967	-8.0
Apr	31,113	30,437	-2.2	128,876	120,404	-6.6
May	30,406	31,454	3.4	159,282	151,858	-4.7
Jun	30,862	31,410	1.8	190,144	183,268	-3.6
Jul	32,752	31,935	-2.5	222,896	215,203	-3.5
Aug	33,029	33,824	2.4	255,925	249,027	-2.7
Sep	32,130			288,055		
Oct	30,838			318,893		
Nov	30,298			349,191		
Dec	28,038			377,229		
Lowfat Cottage Cheese						
Jan	32,847	29,468	-10.3	32,847	29,468	-10.3
Feb	31,469	31,520	0.2	64,316	60,988	-5.2
Mar	36,032	33,230	-7.8	100,348	94,218	-6.1
Apr	32,158	32,589	1.3	132,506	126,807	-4.3
May	34,149	34,758	1.8	166,655	161,565	-3.1
Jun	34,236	33,889	-1.0	200,891	195,454	-2.7
Jul	32,462	31,966	-1.5	233,353	227,420	-2.5
Aug	33,972	36,375	7.1	267,325	263,795	-1.3
Sep	34,435			301,760		
Oct	31,112			332,872		
Nov	30,599			363,471		
Dec	27,748			391,219		
	<i>1,000 Gallons</i>	<i>1,000 Gallons</i>	<i>Percent</i>	<i>1,000 Gallons</i>	<i>1,000 Gallons</i>	<i>Percent</i>
Ice Cream, Hard						
Jan	60,148	60,440	0.5	60,148	60,440	0.5
Feb	64,848	64,240	-0.9	124,996	124,680	-0.3
Mar	78,409	78,232	-0.2	203,405	202,912	-0.2
Apr	76,836	77,426	0.8	280,241	280,338	
May	74,378	79,510	6.9	354,619	359,848	1.5
Jun	85,245	90,806	6.5	439,864	450,654	2.5
Jul	77,886	87,648	12.5	517,750	538,302	4.0
Aug	73,697	89,421	21.3	591,447	627,723	6.1
Sep	70,776			662,223		
Oct	68,134			730,357		
Nov	59,116			789,473		
Dec	55,193			844,666		

See footnote(s) at end of table.

--continued

**Dairy Products: Production by Product and Month,
United States, 2004-2005 ¹ (continued)**

Product and Month	By Month			Cumulative		
	2004	2005	Change From 2004	2004	2005	Change From 2004
	<i>1,000 Gallons</i>	<i>1,000 Gallons</i>	<i>Percent</i>	<i>1,000 Gallons</i>	<i>1,000 Gallons</i>	<i>Percent</i>
Ice Cream, Lowfat						
Jan	26,381	27,079	2.6	26,381	27,079	2.6
Feb	28,440	28,083	-1.3	54,821	55,162	0.6
Mar	37,856	36,580	-3.4	92,677	91,742	-1.0
Apr	39,687	35,701	-10.0	132,364	127,443	-3.7
May	38,796	35,568	-8.3	171,160	163,011	-4.8
Jun	41,920	41,736	-0.4	213,080	204,747	-3.9
Jul	42,430	39,414	-7.1	255,510	244,161	-4.4
Aug	39,329	40,266	2.4	294,839	284,427	-3.5
Sep	34,495			329,334		
Oct	31,233			360,567		
Nov	27,363			387,930		
Dec	27,544			415,474		
Ice Cream, NF, Hard						
Jan	1,359	1,164	-14.3	1,359	1,164	-14.3
Feb	1,462	1,619	10.7	2,821	2,783	-1.3
Mar	1,669	1,670	0.1	4,490	4,453	-0.8
Apr	2,009	1,642	-18.3	6,499	6,095	-6.2
May	1,757	1,745	-0.7	8,256	7,840	-5.0
Jun	1,904	1,855	-2.6	10,160	9,695	-4.6
Jul	1,725	1,966	14.0	11,885	11,661	-1.9
Aug	1,708	1,829	7.1	13,593	13,490	-0.8
Sep	1,455			15,048		
Oct	1,630			16,678		
Nov	1,118			17,796		
Dec	1,281			19,077		
Sherbet, Hard						
Jan	3,558	4,194	17.9	3,558	4,194	17.9
Feb	3,837	4,116	7.3	7,395	8,310	12.4
Mar	5,295	4,915	-7.2	12,690	13,225	4.2
Apr	4,665	5,047	8.2	17,355	18,272	5.3
May	4,714	5,022	6.5	22,069	23,294	5.6
Jun	5,602	5,710	1.9	27,671	29,004	4.8
Jul	4,700	5,408	15.1	32,371	34,412	6.3
Aug	4,690	5,675	21.0	37,061	40,087	8.2
Sep	4,214			41,275		
Oct	3,638			44,913		
Nov	3,434			48,347		
Dec	2,920			51,267		

See footnote(s) at end of table.

--continued

**Dairy Products: Production by Product and Month,
United States, 2004-2005 (continued)**

Product and Month	By Month			Cumulative		
	2004	2005	Change From 2004	2004	2005	Change From 2004
	<i>1,000 Pounds</i>	<i>1,000 Pounds</i>	<i>Percent</i>	<i>1,000 Pounds</i>	<i>1,000 Pounds</i>	<i>Percent</i>
Sour Cream						
Jan	75,950	76,883	1.2	75,950	76,883	1.2
Feb	69,869	75,324	7.8	145,819	152,207	4.4
Mar	84,898	87,189	2.7	230,717	239,396	3.8
Apr	74,707	72,041	-3.6	305,424	311,437	2.0
May	75,132	85,130	13.3	380,556	396,567	4.2
Jun	80,905	83,642	3.4	461,461	480,209	4.1
Jul	76,850	77,890	1.4	538,311	558,099	3.7
Aug	82,337	91,783	11.5	620,648	649,882	4.7
Sep	77,726			698,374		
Oct	83,612			781,986		
Nov	104,098			886,084		
Dec	94,078			980,162		

See footnote(s) at end of table.

--continued

**Dairy Products: Production by Product and Month,
United States, 2004-2005 (continued)**

Product and Month	By Month			Cumulative		
	2004	2005	Change From 2004	2004	2005	Change From 2004
	<i>1,000 Pounds</i>	<i>1,000 Pounds</i>	<i>Percent</i>	<i>1,000 Pounds</i>	<i>1,000 Pounds</i>	<i>Percent</i>
Yogurt						
Jan	217,302	223,206	2.7	217,302	223,206	2.7
Feb	216,153	237,598	9.9	433,455	460,804	6.3
Mar	247,890	265,285	7.0	681,345	726,089	6.6
Apr	226,545	251,984	11.2	907,890	978,073	7.7
May	242,139	262,207	8.3	1,150,029	1,240,280	7.8
Jun	241,514	252,992	4.8	1,391,543	1,493,272	7.3
Jul	212,831	227,077	6.7	1,604,374	1,720,349	7.2
Aug	230,018	249,507	8.5	1,834,392	1,969,856	7.4
Sep	243,742			2,078,134		
Oct	223,663			2,301,797		
Nov	193,091			2,494,888		
Dec	213,766			2,708,654		

See footnote(s) at end of table.

--continued

**Dairy Products: Production by Product and Month,
United States, 2004-2005 ¹ (continued)**

Product and Month	By Month			Cumulative		
	2004	2005	Change From 2004	2004	2005	Change From 2004
	<i>1,000 Gallons</i>	<i>1,000 Gallons</i>	<i>Percent</i>	<i>1,000 Gallons</i>	<i>1,000 Gallons</i>	<i>Percent</i>
Frozen Yogurt						
Jan	5,141	4,299	-16.4	5,141	4,299	-16.4
Feb	5,448	4,457	-18.2	10,589	8,756	-17.3
Mar	6,269	6,010	-4.1	16,858	14,766	-12.4
Apr	6,369	5,345	-16.1	23,227	20,111	-13.4
May	6,148	6,241	1.5	29,375	26,352	-10.3
Jun	6,580	6,064	-7.8	35,955	32,416	-9.8
Jul	5,704	5,600	-1.8	41,659	38,016	-8.7
Aug	6,137	5,952	-3.0	47,796	43,968	-8.0
Sep	5,753			53,549		
Oct	5,270			58,819		
Nov	4,705			63,524		
Dec	4,148			67,672		

¹ July 2005 data revised.

² Monthly 2004 data revised. January 2005 data revised.

³ Excludes all modified dry whey products.

**Total Cheese, Excluding Cottage Cheese: Production by
State and United States, August 2004-2005**

State	Aug 2004	Jul ¹ 2005	Aug 2005	Change From	
				Aug 2004	Jul 2005
	<i>1,000 Pounds</i>	<i>1,000 Pounds</i>	<i>1,000 Pounds</i>	<i>Percent</i>	<i>Percent</i>
CA	157,261	174,677	173,422	10.3	-0.7
ID	62,172				
IL	7,382	7,353	8,113	9.9	10.3
IA	12,027	12,607	12,742	5.9	1.1
MA	64	44	49	-23.4	11.4
MN	50,210	51,191	51,857	3.3	1.3
MO	9,269				
NY	58,047	49,637	57,854	-0.3	16.6
OH	14,926	15,646	16,500	10.5	5.5
PA	30,364	32,847	33,518	10.4	2.0
SD	12,922	13,813	14,051	8.7	1.7
UT	4,956	5,717	5,157	4.1	-9.8
WI	197,956	196,406	203,278	2.7	3.5
Oth Sts ²	101,982	177,775	171,501	68.2	-3.5
US	719,538	737,713	748,042	4.0	1.4
N Atlantic	104,065	98,157	108,085	3.9	10.1
S Atlantic	2,669	2,765	2,693	0.9	-2.6
E N Central	230,499	231,564	237,269	2.9	2.5
W N Central	87,414	83,201	83,258	-4.8	0.1
S Central	6,316	8,366	5,986	-5.2	-28.4
West	288,575	313,660	310,751	7.7	-0.9

¹ Revised.

² States not shown when fewer than 3 plants reported or individual plant operations could be disclosed. Percent change shown only when comparable States are included in the calculation.

American Cheese: Production by State and United States, August 2004-2005

State	Aug 2004	Jul ¹ 2005	Aug 2005	Change From	
				Aug 2004	Jul 2005
	<i>1,000 Pounds</i>	<i>1,000 Pounds</i>	<i>1,000 Pounds</i>	<i>Percent</i>	<i>Percent</i>
CA	65,624	70,739	68,407	4.2	-3.3
IA	9,458	9,706	9,861	4.3	1.6
MN	47,753	49,014	49,163	3.0	0.3
NY	4,952	5,667	5,392	8.9	-4.9
OH	2,369	3,287	3,466	46.3	5.4
OR	8,729	9,456	9,866	13.0	4.3
WI	70,877	73,937	70,265	-0.9	-5.0
Oth Sts ²	90,622	95,231	92,202	1.7	-3.2
US	300,384	317,037	308,622	2.7	-2.7
Atlantic	10,542	11,837	11,206	6.3	-5.3
E N Central	74,311	78,276	74,660	0.5	-4.6
W N Central	64,038	66,316	66,640	4.1	0.5
S Central	3,165	3,168	3,059	-3.3	-3.4
West	148,328	157,440	153,057	3.2	-2.8

¹ Revised.

² States not shown when fewer than 3 plants reported or individual plant operations could be disclosed. Percent change shown only when comparable States are included in the calculation.

Cheddar Cheese: Production by State and United States, August 2004-2005

State	Aug ¹ 2004	Jul ² 2005	Aug 2005	Change From	
				Aug 2004	Jul 2005
	<i>1,000 Pounds</i>	<i>1,000 Pounds</i>	<i>1,000 Pounds</i>	<i>Percent</i>	<i>Percent</i>
CA	40,426	42,767	39,715	-1.8	-7.1
MN	42,503	45,175	44,264	4.1	-2.0
NY	4,842	5,516	5,198	7.4	-5.8
WI	54,045	58,435	54,605	1.0	-6.6
Oth Sts ³	95,942	101,920	98,224	2.4	-3.6
US	237,758	253,813	242,006	1.8	-4.7
Atlantic	10,334	11,405	10,772	4.2	-5.6
E N Cen	56,031	60,645	56,877	1.5	-6.2
W N Cen	53,805	57,155	55,295	2.8	-3.3
S Cen	3,164	3,167	3,058	-3.4	-3.4
West	114,424	121,441	116,004	1.4	-4.5

¹ Revised 2004 Cheddar Cheese data released in the May 5, 2005 Dairy Products Report.

² Revised.

³ States not shown when fewer than 3 plants reported or individual plant operations could be disclosed. Percent change shown only when comparable States are included in the calculation.

Mozzarella Cheese: Production by State and United States, August 2004-2005

State	Aug 2004	Jul ¹ 2005	Aug 2005	Change From	
				Aug 2004	Jul 2005
	<i>1,000 Pounds</i>	<i>1,000 Pounds</i>	<i>1,000 Pounds</i>	<i>Percent</i>	<i>Percent</i>
CA	69,573	78,452	80,020	15.0	2.0
NY	14,308	14,108	14,521	1.5	2.9
PA	15,667	18,915	16,301	4.0	-13.8
WI	67,998	63,129	68,800	1.2	9.0
Oth Sts ²	64,951	68,273	64,971		-4.8
US	232,497	242,877	244,613	5.2	0.7
Atlantic ³	37,706	40,187	39,312	4.3	-2.2
E N Central	77,397	74,266	77,381		4.2
West	109,718	120,290	119,716	9.1	-0.5

¹ Revised.

² States not shown when fewer than 3 plants reported or individual plant operations could be disclosed. Percent change shown only when comparable States are included in the calculation.

³ Region totals may not add to U.S. when compiled regions could not be disclosed.

Butter: Production by State and United States, August 2004-2005

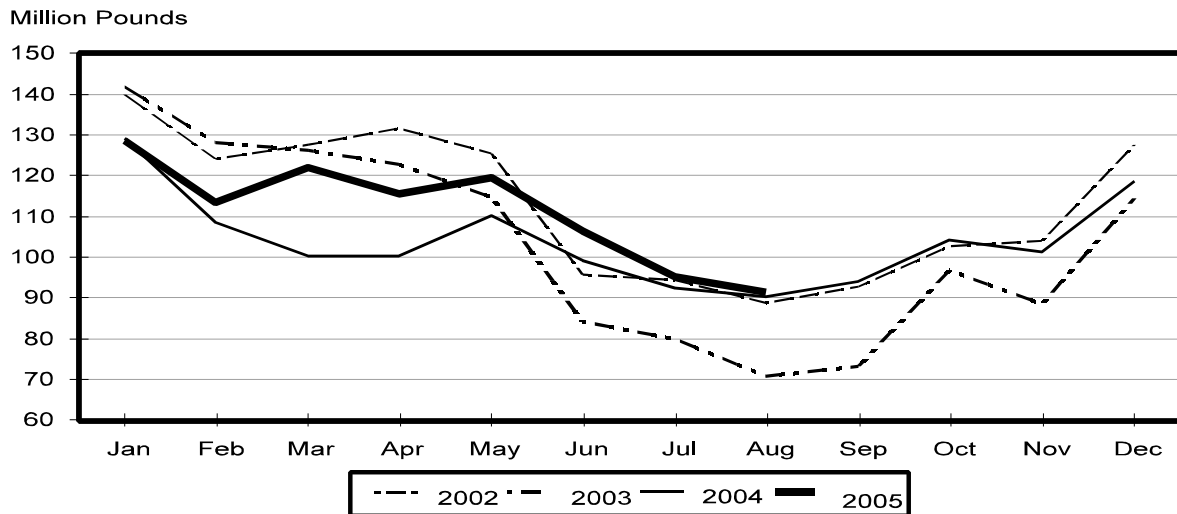
State	Aug 2004	Jul ¹ 2005	Aug 2005	Change From	
				Aug 2004	Jul 2005
	<i>1,000 Pounds</i>	<i>1,000 Pounds</i>	<i>1,000 Pounds</i>	<i>Percent</i>	<i>Percent</i>
CA	31,754	31,492	31,882	0.4	1.2
NY	1,172	1,410	734	-37.4	-47.9
PA	2,936	5,226	3,241	10.4	-38.0
WI	26,019	25,514	27,461	5.5	7.6
Oth Sts ²	28,448	31,668	28,116	-1.2	-11.2
US	90,329	95,310	91,434	1.2	-4.1
N Atlantic ³	6,501	8,010	5,126	-21.2	-36.0
E N Central	27,048	27,485	28,550	5.6	3.9
W N Central	7,952	4,591	4,390	-44.8	-4.4
West	43,918	46,944	46,706	6.3	-0.5

¹ Revised.

² States not shown when fewer than 3 plants reported or individual plant operations could be disclosed. Percent change shown only when comparable States are included in the calculation.

³ Region totals may not add to U.S. when compiled regions could not be disclosed.

Total Butter Production United States



**Nonfat Dry Milk, Human: Production by State
and United States, August 2004-2005**

State	Aug 2004	Jul ¹ 2005	Aug 2005	Change From	
				Aug 2004	Jul 2005
	<i>1,000 Pounds</i>	<i>1,000 Pounds</i>	<i>1,000 Pounds</i>	<i>Percent</i>	<i>Percent</i>
CA	64,181	41,446	37,699	-41.3	-9.0
PA	5,123	11,696	5,331	4.1	-54.4
Oth Sts ²	44,313	57,525	44,539	0.5	-22.6
US	113,617	110,667	87,569	-22.9	-20.9
Atlantic	12,737	20,834	10,650	-16.4	-48.9
E N Central	3,363	6,004	3,924	16.7	-34.6
W N Central	5,042	5,013	3,719	-26.2	-25.8
S Central	3,965	8,290	5,303	33.7	-36.0
West	88,510	70,526	63,973	-27.7	-9.3

¹ Revised.

² States not shown when fewer than 3 plants reported or individual plant operations could be disclosed. Percent change shown only when comparable States are included in the calculation.

**Dry Whey, Human: Production by State
and United States, August 2004-2005**

State	Aug 2004	Jul ¹ 2005	Aug 2005	Change From	
				Aug 2004	Jul 2005
	<i>1,000 Pounds</i>	<i>1,000 Pounds</i>	<i>1,000 Pounds</i>	<i>Percent</i>	<i>Percent</i>
CA	11,527	9,968	10,732	-6.9	7.7
MN		3,732	3,585		-3.9
NY	9,841	10,186	9,259	-5.9	-9.1
PA	7,716	8,388	7,623	-1.2	-9.1
UT	1,898	2,294	1,965	3.5	-14.3
WI	25,299	24,561	25,729	1.7	4.8
Oth Sts ²	23,811	22,260	20,628	-13.4	-7.3
US	80,092	81,389	79,521	-0.7	-2.3
Atlantic	17,557	18,574	16,882	-3.8	-9.1
Central	37,346	37,729	37,430	0.2	-0.8
West	25,189	25,086	25,209	0.1	0.5

¹ Revised.

² States not shown when fewer than 3 plants reported or individual plant operations could be disclosed. Percent change shown only when comparable States are included in the calculation.

Ice Cream, Hard: Production by State and United States, August 2004-2005

State	Aug 2004	Jul ¹ 2005	Aug 2005	Change From	
				Aug 2004	Jul 2005
	<i>1,000 Gallons</i>	<i>1,000 Gallons</i>	<i>1,000 Gallons</i>	<i>Percent</i>	<i>Percent</i>
CA	10,835	12,320	15,213	40.4	23.5
FL	1,563	1,800	1,750	12.0	-2.8
IL	3,198	3,889	4,526	41.5	16.4
IN	6,845	8,736	7,249	5.9	-17.0
MD	1,718	1,739	1,456	-15.3	-16.3
MA	4,061	5,926	4,990	22.9	-15.8
MI	1,774	1,500	1,667	-6.0	11.1
MN	3,405	4,019	4,159	22.1	3.5
MO	1,891	3,065	2,136	13.0	-30.3
NY	2,371	3,056	2,630	10.9	-13.9
NC	1,145	1,614	1,577	37.7	-2.3
OH	2,310	2,239	2,722	17.8	21.6
OR	1,463	1,278	1,383	-5.5	8.2
PA	4,795	4,136	4,749	-1.0	14.8
TN	1,466	1,202	1,621	10.6	34.9
TX	3,553	5,474	5,321	49.8	-2.8
UT	2,413	2,441	2,621	8.6	7.4
Oth Sts ²	18,891	23,214	23,651	25.2	1.9
US	73,697	87,648	89,421	21.3	2.0
N Atlantic	13,508	17,552	17,472	29.3	-0.5
S Atlantic	5,566	6,754	6,259	12.5	-7.3
E N Central	14,974	17,256	17,091	14.1	-1.0
W N Central	12,340	15,385	14,503	17.5	-5.7
S Central	8,894	10,698	11,507	29.4	7.6
West	18,415	20,003	22,589	22.7	12.9

¹ Revised.

² States not shown when fewer than 3 plants reported or individual plant operations could be disclosed. Percent change shown only when comparable States are included in the calculation.

**Canned Milk and Dry Milk Products: Manufacturers' Shipments,
and Stocks, August, 2004-2005**

Product	Aug 2004	Jul 2005 ¹	Aug 2005	Change From	
				Aug 2004	Jul 2005
	Manufacturers' Shipments ²				
	<i>1,000 Pounds</i>	<i>1,000 Pounds</i>	<i>1,000 Pounds</i>	<i>Percent</i>	<i>Percent</i>
Nonfat Dry Milk, Human	107,132	81,724	72,273	-32.5	-11.6
	Manufacturers' Stocks End-of-Month ³				
	<i>1,000 Pounds</i>	<i>1,000 Pounds</i>	<i>1,000 Pounds</i>	<i>Percent</i>	<i>Percent</i>
Canned Evaporated and Condensed Whole Milk	87,157	74,186	77,369	-11.2	4.3
Nonfat Dry Milk, Human	150,681	119,694	112,002	-25.7	-6.4
Dry Buttermilk, Total	5,751	9,194	7,283	26.6	-20.8

¹ Revised.

² For dry products, shipments of bulk goods only.

³ Stocks held by manufacturers at all points and in transit.

**Manufacturers' Whey Stocks and Selling Prices: Production by Month,
United States, 2003**

Products	Jan	Feb	Mar	Apr
	Production			
	<i>1,000 Pounds</i>	<i>1,000 Pounds</i>	<i>1,000 Pounds</i>	<i>1,000 Pounds</i>
Whey				
Protein Concentrate				
Human ¹	26,773	26,246	26,902	27,677
Animal ¹	4,354	4,163	4,112	4,094
Total ¹	31,127	30,409	31,014	31,771
25.0-49.9 Percent ²	24,844	23,736	23,746	25,156
50.0-89.9 Percent ²	6,283	6,673	7,268	6,615
Protein Isolates ³	1,985	1,443	1,660	2,037
	Manufacturers' Stocks End of Month ⁴			
	<i>1,000 Pounds</i>	<i>1,000 Pounds</i>	<i>1,000 Pounds</i>	<i>1,000 Pounds</i>
Whey				
Protein Concentrate				
Human ¹	28,067	25,596	29,857	30,685
Animal ¹	3,055	3,313	3,543	3,179
Total ¹	31,122	28,909	33,400	33,864
25.0-49.9 Percent ²	18,892	17,521	21,237	22,837
50.0-89.9 Percent ²	12,230	11,388	12,163	11,027
Products	May	Jun	Jul	Aug
	Production			
	<i>1,000 Pounds</i>	<i>1,000 Pounds</i>	<i>1,000 Pounds</i>	<i>1,000 Pounds</i>
Whey				
Protein Concentrate				
Human ¹	27,755	23,751	24,250	24,284
Animal ¹	4,357	4,119	4,292	4,520
Total ¹	32,112	27,870	28,542	28,804
25.0-49.9 Percent ²	25,283	20,986	21,200	20,931
50.0-89.9 Percent ²	6,829	6,884	7,342	7,873
Protein Isolates ³	1,757	2,187	1,925	1,892
	Manufacturers' Stocks End of Month ⁴			
	<i>1,000 Pounds</i>	<i>1,000 Pounds</i>	<i>1,000 Pounds</i>	<i>1,000 Pounds</i>
Whey				
Protein Concentrate				
Human ¹	32,076	30,512	28,433	28,133
Animal ¹	2,992	3,241	3,042	2,976
Total ¹	35,068	33,753	31,475	31,109
25.0-49.9 Percent ²	24,197	23,538	19,849	19,051
50.0-89.9 Percent ²	10,871	10,215	11,626	12,058

See footnote(s) at end of table.

--continued

**Manufacturers' Whey Stocks and Selling Prices: Production by Month,
United States, 2003**

Products	Sep	Oct	Nov	Dec	Total
	Production				
	<i>1,000 Pounds</i>	<i>1,000 Pounds</i>	<i>1,000 Pounds</i>	<i>1,000 Pounds</i>	<i>1,000 Pounds</i>
Whey					
Protein Concentrate					
Human ¹	23,631	24,054	23,210	27,025	305,558
Animal ¹	4,155	4,603	4,791	4,826	52,386
Total ¹	27,786	28,657	28,001	31,851	357,944
25.0-49.9 Percent ²	20,057	21,558	20,440	24,102	272,039
50.0-89.9 Percent ²	7,729	7,099	7,561	7,749	85,905
Protein Isolates ³	1,814	1,895	1,759	1,979	22,333
	Manufacturers' Stocks End of Month ⁴				
	<i>1,000 Pounds</i>	<i>1,000 Pounds</i>	<i>1,000 Pounds</i>	<i>1,000 Pounds</i>	
Whey					
Protein Concentrate					
Human ¹	25,747	24,793	25,153	28,713	
Animal ¹	2,777	3,645	3,908	3,407	
Total ¹	28,524	28,438	29,061	32,120	
25.0-49.9 Percent ²	17,380	17,432	18,302	21,811	
50.0-89.9 Percent ²	11,144	11,006	10,759	10,309	

¹ Whey Protein Concentrate, 25.0 to 89.9 percent.

² Whey Protein Concentrate, Human and Animal.

³ Whey Protein Isolate, 90.0 percent or greater.

⁴ Stocks held by manufacturers at all points and in transit.

**Manufacturers' Whey Stocks and Selling Prices: Production by Month,
United States, 2004**

Products	Jan	Feb	Mar	Apr
	Production			
	<i>1,000 Pounds</i>	<i>1,000 Pounds</i>	<i>1,000 Pounds</i>	<i>1,000 Pounds</i>
Whey				
Protein Concentrate				
Human ¹	25,534	23,467	26,383	25,193
Animal ¹	4,639	4,395	4,630	4,597
Total ¹	30,173	27,862	31,013	29,790
25.0-49.9 Percent ²	22,957	21,296	23,745	22,501
50.0-89.9 Percent ²	7,216	6,566	7,268	7,289
Protein Isolates ³	2,136	1,955	2,226	2,246
	Manufacturers' Stocks End of Month ⁴			
	<i>1,000 Pounds</i>	<i>1,000 Pounds</i>	<i>1,000 Pounds</i>	<i>1,000 Pounds</i>
Whey				
Protein Concentrate				
Human ¹	28,351	25,291	24,575	21,228
Animal ¹	4,689	4,560	3,470	2,500
Total ¹	33,040	29,851	28,045	23,728
25.0-49.9 Percent ²	24,724	21,994	20,861	16,008
50.0-89.9 Percent ²	8,316	7,857	7,184	7,720
Products	May	Jun	Jul	Aug
	Production			
	<i>1,000 Pounds</i>	<i>1,000 Pounds</i>	<i>1,000 Pounds</i>	<i>1,000 Pounds</i>
Whey				
Protein Concentrate				
Human ¹	24,763	24,353	25,026	24,065
Animal ¹	4,702	4,610	4,690	5,097
Total ¹	29,465	28,963	29,716	29,162
25.0-49.9 Percent ²	22,071	21,428	22,397	22,761
50.0-89.9 Percent ²	7,394	7,535	7,319	6,401
Protein Isolates ³	2,362	2,478	2,389	2,284
	Manufacturers' Stocks End of Month ⁴			
	<i>1,000 Pounds</i>	<i>1,000 Pounds</i>	<i>1,000 Pounds</i>	<i>1,000 Pounds</i>
Whey				
Protein Concentrate				
Human ¹	21,344	22,199	25,384	24,391
Animal ¹	2,852	3,011	3,322	3,267
Total ¹	24,196	25,210	28,706	27,658
25.0-49.9 Percent ²	17,009	17,770	20,438	19,714
50.0-89.9 Percent ²	7,187	7,440	8,268	7,944

See footnote(s) at end of table.

--continued

**Manufacturers' Whey Stocks and Selling Prices: Production by Month,
United States, 2004**

Products	Sep	Oct	Nov	Dec	Total
	Production				
	<i>1,000 Pounds</i>	<i>1,000 Pounds</i>	<i>1,000 Pounds</i>	<i>1,000 Pounds</i>	<i>1,000 Pounds</i>
Whey					
Protein Concentrate					
Human ¹	23,973	24,366	24,744	27,322	299,189
Animal ¹	4,962	5,097	4,779	5,202	57,400
Total ¹	28,935	29,463	29,523	32,524	356,589
25.0-49.9 Percent ²	22,494	23,306	22,499	24,887	272,342
50.0-89.9 Percent ²	6,441	6,157	7,024	7,637	84,247
Protein Isolates ³	2,370	2,504	2,273	2,454	27,677
	Manufacturers' Stocks End of Month ⁴				
	<i>1,000 Pounds</i>	<i>1,000 Pounds</i>	<i>1,000 Pounds</i>	<i>1,000 Pounds</i>	
Whey					
Protein Concentrate					
Human ¹	26,202	25,549	25,577	27,381	
Animal ¹	3,523	3,129	3,860	2,742	
Total ¹	29,725	28,678	29,437	30,123	
25.0-49.9 Percent ²	20,736	20,550	19,809	19,073	
50.0-89.9 Percent ²	8,989	8,128	9,628	11,050	

¹ Whey Protein Concentrate, 25.0 to 89.9 percent.

² Whey Protein Concentrate, Human and Animal.

³ Whey Protein Isolate, 90.0 percent or greater.

⁴ Stocks held by manufacturers at all points and in transit.

**Manufacturers' Whey Stocks and Selling Prices: Production by Month,
United States, 2005**

Products	Jan	Feb	Mar	Apr
	Production			
	<i>1,000 Pounds</i>	<i>1,000 Pounds</i>	<i>1,000 Pounds</i>	<i>1,000 Pounds</i>
Whey				
Protein Concentrate				
Human ¹	24,523	23,187	26,267	27,166
Animal ¹	4,415	3,950	4,483	4,752
Total ¹	28,938	27,137	30,750	31,918
25.0-49.9 Percent ²	20,647	19,841	22,324	23,704
50.0-89.9 Percent ²	8,291	7,296	8,426	8,214
Protein Isolates ³	2,463	2,393	2,464	2,576
	Manufacturers' Stocks End of Month ⁴			
	<i>1,000 Pounds</i>	<i>1,000 Pounds</i>	<i>1,000 Pounds</i>	<i>1,000 Pounds</i>
Whey				
Protein Concentrate				
Human ¹	24,626	22,359	23,534	22,674
Animal ¹	2,513	1,868	1,983	2,114
Total ¹	27,139	24,227	25,517	24,788
25.0-49.9 Percent ²	15,529	13,838	15,220	14,638
50.0-89.9 Percent ²	11,610	10,389	10,297	10,150
Products	May	Jun	Jul	Aug
	Production			
	<i>1,000 Pounds</i>	<i>1,000 Pounds</i>	<i>1,000 Pounds</i>	<i>1,000 Pounds</i>
Whey				
Protein Concentrate				
Human ¹	25,938	28,521	26,783	23,220
Animal ¹	4,172	3,763	4,301	4,343
Total ¹	30,110	32,284	31,084	27,563
25.0-49.9 Percent ²	22,274	24,054	22,302	20,985
50.0-89.9 Percent ²	7,836	8,230	8,782	6,578
Protein Isolates ³	2,577	2,564	2,353	2,137
	Manufacturers' Stocks End of Month ⁴			
	<i>1,000 Pounds</i>	<i>1,000 Pounds</i>	<i>1,000 Pounds</i>	<i>1,000 Pounds</i>
Whey				
Protein Concentrate				
Human ¹	21,832	23,274	24,269	23,391
Animal ¹	2,369	2,078	1,990	2,224
Total ¹	24,201	25,352	26,259	25,615
25.0-49.9 Percent ²	14,229	15,555	16,208	16,388
50.0-89.9 Percent ²	9,972	9,797	10,051	9,227

¹ Whey Protein Concentrate, 25.0 to 89.9 percent.

² Whey Protein Concentrate, Human and Animal.

³ Whey Protein Isolate, 90.0 percent or greater.

⁴ Stocks held by manufacturers at all points and in transit.

Procedures and Reliability: Estimates included in this report are based on data provided each month by manufacturers of these products. In 32 States, the State Departments of Agriculture assist in collection of data, which eliminates duplicate reporting and reduces respondent burden. Data are collected by mail, personal and telephone interviews following the close of each month. There were 1,096 manufacturers that made one or more products in 2004. Each month, reports are generally received from all dairy plants in States with small numbers of plants. In States with large numbers of plants, survey procedures are designed to obtain monthly reports from all large plants and from a sample of small plants. Monthly estimates are based upon returns from about 70 percent of the plants which account for 70 to 90 percent of the total production of major dairy products.

Revision Policy: Monthly estimates are subject to revision the month following the preliminary estimates. Annual estimates are published in the "**Dairy Products**" report published each April which includes any revisions made to current and previous year. An attempt is made to get information from all plants for preparing these estimates

ACCESS TO REPORTS!!

For your convenience, there are several ways to obtain NASS reports, data products, and services:

INTERNET ACCESS

All NASS reports are available free of charge on the worldwide Internet. For access, connect to the Internet and go to the NASS Home Page at: www.usda.gov/nass/. Select "Today's Reports" or Publications and then Reports Calendar or Publications and then Search, by Title or Subject.

E-MAIL SUBSCRIPTION

All NASS reports are available by subscription free of charge direct to your e-mail address. Starting with the NASS Home Page at www.usda.gov/nass/, click on **Publications**, then click on the **Subscribe by E-mail** button which takes you to the page describing e-mail delivery of reports. Finally, click on **Go to the Subscription Page** and follow the instructions.

PRINTED REPORTS OR DATA PRODUCTS

CALL OUR TOLL-FREE ORDER DESK: 800-999-6779 (U.S. and Canada)
Other areas, please call 703-605-6220 FAX: 703-605-6900
(Visa, MasterCard, check, or money order acceptable for payment.)

ASSISTANCE

For **assistance** with general agricultural statistics or further information about NASS or its products or services, contact the **Agricultural Statistics Hotline** at **800-727-9540**, 7:30 a.m. to 4:00 p.m. ET, or e-mail: nass@nass.usda.gov.

The U.S. Department of Agriculture (USDA) prohibits discrimination in all its programs and activities on the basis of race, color, national origin, age, disability, and where applicable, sex, marital status, familial status, parental status, religion, sexual orientation, genetic information, political beliefs, reprisal, or because all or part of an individual's income is derived from any public assistance program. (Not all prohibited bases apply to all programs.) Persons with disabilities who require alternative means for communication of program information (Braille, large print, audiotape, etc.) should contact USDA's TARGET Center at (202) 720-2600 (voice and TDD).

To file a complaint of discrimination, write to USDA, Director, Office of Civil Rights, 1400 Independence Avenue, S.W., Washington, D.C. 20250-9410, or call (800) 795-3272 (voice) or (202) 720-6382 (TDD). USDA is an equal opportunity provider and employer.

USDA Data Users' Meeting

October 17, 2005

Embassy Suites at O'Hare

Chicago, Illinois

(847) 678-4000

The USDA's National Agricultural Statistics Service will be organizing an open forum for data users. The purpose will be to provide updates on pending changes in the various statistical and information programs and seek comments and input from data users. Other USDA agencies to be represented will include the Agricultural Marketing Service, the Economic Research Service, the Foreign Agricultural Service, and World Agricultural Outlook Board. The Foreign Trade Division from the Census Bureau will also be included in the meeting.

For registration details or additional information for the Data Users' Meeting, see the NASS homepage at www.usda.gov/nass/ or contact Lynda Ford (NASS) at (202) 720-3896 or at lynda_ford@nass.usda.gov.

This Data Users' Meeting precedes an Industry Outlook meeting that will be held at the same location on October 18, 2005. The Outlook meeting brings together analysts from various commodity sectors to discuss the outlook situation. For more information about the outlook meeting and to register contact Jim Robb (Livestock and Marketing Information Center) at (720) 544-2941 or at robb@lmic.info.