



NASS

FACT FINDERS FOR AGRICULTURE
UNITED STATES DEPARTMENT OF AGRICULTURE

Washington, D.C.

Dairy Products

Released November 3, 2005, by the National Agricultural Statistics Service (NASS), Agricultural Statistics Board, U.S. Department of Agriculture. For information on *Dairy Products* call Shawn Clark at (202) 690-3236, office hours 7:30 a.m. to 4:00 p.m. ET.

September 2005 Highlights

Total cheese output (excluding cottage cheese) was 742 million pounds, 3.9 percent above September 2004 but 1.6 percent below August 2005.

American type cheese production totaled 302 million pounds, 2.6 percent above September 2004 but 3.1 percent below August 2005.

Butter production was 101 million pounds in July, 7.2 percent above September 2004 and 10.3 percent above August 2005.

Frozen dessert: (comparisons with September 2004)

Ice cream, Regular (hard) --- 73.1 million gallons, up 3.3 percent.

Ice cream, Lowfat (total) --- 32.5 million gallons, down 5.9 percent.

Ice cream, Nonfat (hard) --- 1.49 million gallons, up 2.7 percent.

Sherbet (hard) --- 4.99 million gallons, up 18.3 percent.

Frozen Yogurt (total) --- 5.15 million gallons, down 10.4 percent.

Nonfat dry milk for human food: (compared with September 2004) --- 71.2 million pounds, down 24.2 percent.

Dry whey products: (comparisons with September 2004)

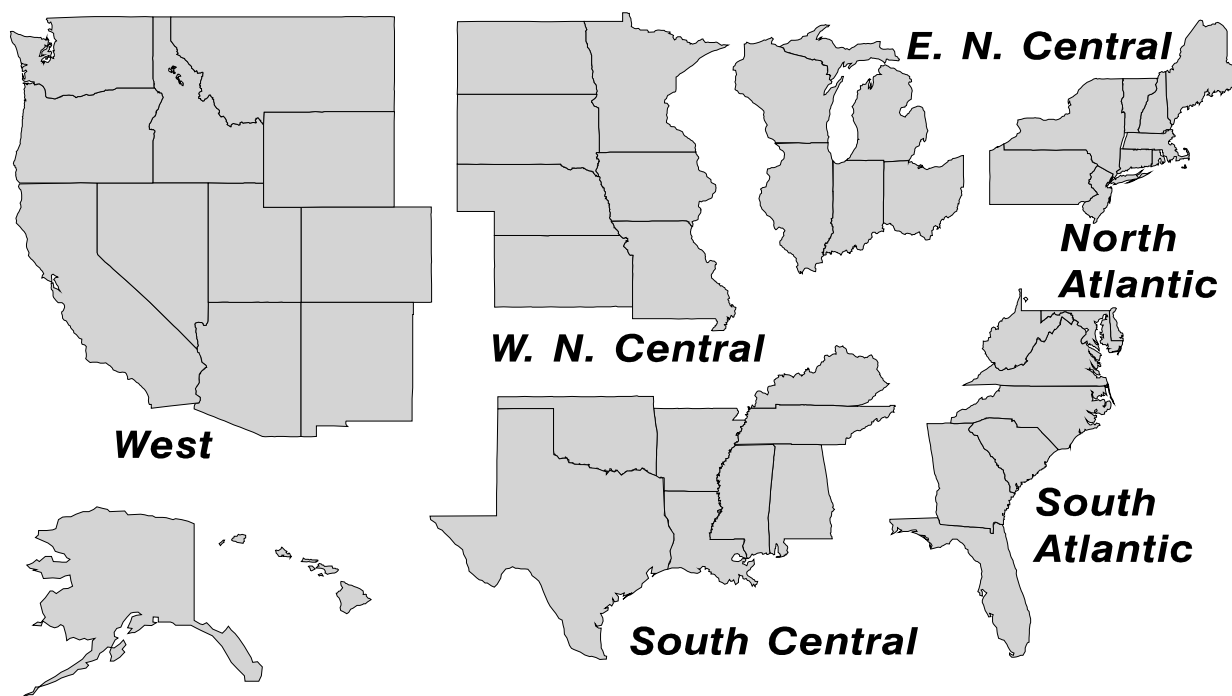
Dry whey, human --- 78.2 million pounds, up 5.7 percent.

Dry whey, animal --- 6.88 million pounds, up 10.1 percent.

Dry whey, total --- 85.1 million pounds, up 6.0 percent.

U. S. Geographic Regions Dairy Products

State totals are not published when fewer than 3 firms have reported or one firm comprises more than 60 percent of the State total. If we are not able to publish a region for confidentiality reasons, it will be combined with other regions when possible. For example, if North Atlantic can not be published, then it will be combined with South Atlantic to publish Atlantic. The West North Central and East North Central will be combined, if necessary, to form North Central. In the event that neither could be published, they may be combined with South Central to publish Central. Some tables will have only limited regions shown, therefore the regions may not add to the United States total.

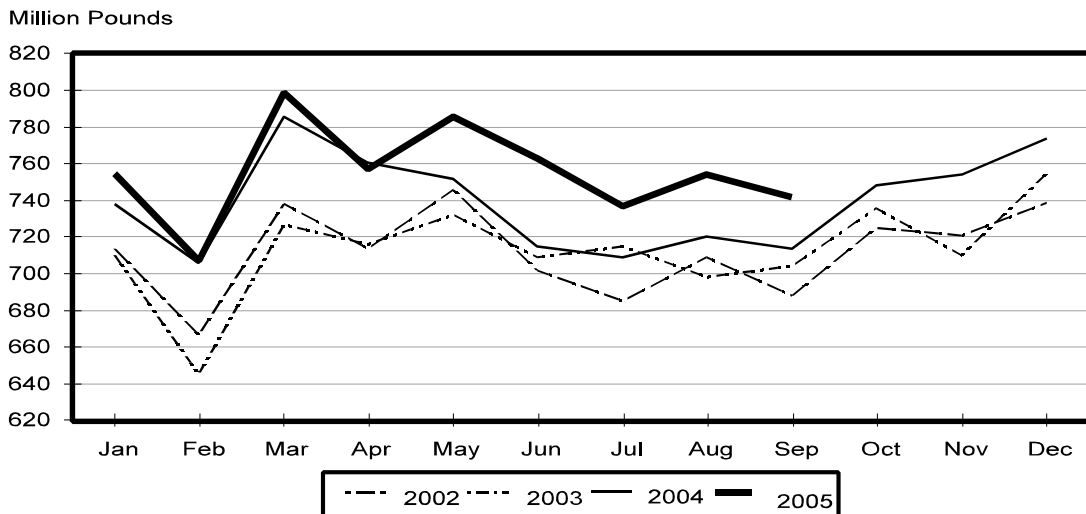


Contents

Page

Dairy Products: Production by Product, United States, September, 2004-2005	1
Whey and Modified Whey Products: Production, Stocks, and Prices, United States, September, 2004-2005	2
Dairy Products: Production by Product and Month, United States, 2004-2005	3
Select Commodities by State and United States, September, 2004-2005	10
Canned Milk and Dry Milk Products: Manufacturer's Shipments, Stocks, and Selling Prices, September, 2004-2005	15
Procedures and Reliability	16

Total Cheese Production United States



**Dairy Products: Production by Product,
United States, September, 2004-2005**

Product	Sep 2004	Aug 2005 ¹	Sep 2005	Change From	
				Sep 2004	Aug 2005
	<i>1,000 Pounds</i>	<i>1,000 Pounds</i>	<i>1,000 Pounds</i>	<i>Percent</i>	<i>Percent</i>
Butter	94,242	91,603	101,051	7.2	10.3
Cheese					
American Types ²	294,368	311,809	302,132	2.6	-3.1
Cheddar ³	234,648	244,731	238,792	1.8	-2.4
Swiss	22,357	24,665	23,886	6.8	-3.2
Brick and Muenster	6,298	6,658	6,395	1.5	-4.0
Cream and Neufchatel	69,894	64,334	65,860	-5.8	2.4
Hispanic	12,782	14,300	14,631	14.5	2.3
Mozzarella	225,064	243,552	241,928	7.5	-0.7
Other Italian Types	62,506	67,039	65,270	4.4	-2.6
Total Italian Types	287,570	310,591	307,198	6.8	-1.1
All Other Types	21,088	21,706	21,851	3.6	0.7
Total	714,357	754,063	741,953	3.9	-1.6
Cottage Cheese, Curd ⁴	39,456	42,322	41,030	4.0	-3.1
Cottage Cheese, Cream ⁵	32,130	33,971	32,747	1.9	-3.6
Cottage Cheese, Lowfat ⁶	34,435	36,362	35,042	1.8	-3.6
Canned Evaporated and Condensed Whole Milk	42,678	41,573	39,862	-6.6	-4.1
Dry Whole Milk	3,293	1,703	2,949	-10.4	73.2
Nonfat Dry Milk, Human	93,936	86,870	71,172	-24.2	-18.1
Dry Skim Milk, Animal	335	520	528	57.6	1.5
Dry Buttermilk	3,637	2,845	4,072	12.0	43.1
Sour Cream	77,726	92,610	79,003	1.6	-14.7
Yogurt, Plain & Flavored	243,742	250,022	260,850	7.0	4.3
	<i>1,000 Gallons</i>	<i>1,000 Gallons</i>	<i>1,000 Gallons</i>	<i>Percent</i>	<i>Percent</i>
Frozen Products					
Ice Cream, Hard	70,776	89,329	73,109	3.3	-18.2
Ice Cream, Lowfat, Hard	9,711	11,084	10,334	6.4	-6.8
Ice Cream, Lowfat, Soft	24,784	29,322	22,132	-10.7	-24.5
Ice Cream, Lowfat, Total	34,495	40,406	32,466	-5.9	-19.7
Ice Cream, Nonfat, Hard	1,455	1,800	1,494	2.7	-17.0
Sherbet, Hard	4,214	5,685	4,987	18.3	-12.3
Water and Juice Ices	4,496	6,182	4,981	10.8	-19.4
Frozen Yogurt, Total	5,753	5,938	5,153	-10.4	-13.2
Regular & Lowfat, Hard	1,687	1,776	1,587	-5.9	-10.6
Nonfat, Hard	997	1,019	1,000	0.3	-1.9
Other Frozen Dairy Products	542	895	667	23.1	-25.5
Mix for Frozen Products					
Ice Cream Mix	39,585	48,496	40,278	1.8	-16.9
Ice Cream, Lowfat, Mix	18,923	22,400	17,943	-5.2	-19.9
Ice Cream, Nonfat, Mix	1,102	1,351	1,008	-8.5	-25.4
Sherbet Mix	2,945	3,838	3,291	11.7	-14.3
Yogurt Mix	3,175	3,493	3,031	-4.5	-13.2

¹ Revised.

² Includes Cheddar, Colby, Monterey, and Jack.

³ Revised 2004 Cheddar Cheese data released in the May 5, 2005 Dairy Products Report.

⁴ Mostly used for processing into cream or lowfat cottage cheese.

⁵ Fat content 4 percent or more.

⁶ Fat content less than 4 percent.

**Whey and Modified Whey Products: Production, Stocks,
and Prices, United States, September, 2004-2005**

Product	Sep 2004	Aug 2005 ¹	Sep 2005	Change From	
				Sep 2004	Aug 2005
Production					
	<i>1,000 Pounds</i>	<i>1,000 Pounds</i>	<i>1,000 Pounds</i>	<i>Percent</i>	<i>Percent</i>
Condensed Whey, Solids Content ²					
Sweet-Type, Human	7,866	6,515	7,243	-7.9	11.2
Dry Whey Products					
Dry Whey, Human	73,994	80,218	78,191	5.7	-2.5
Dry Whey, Animal	6,245	7,290	6,878	10.1	-5.7
Dry Whey, Total	80,239	87,508	85,069	6.0	-2.8
Reduced Lactose and Minerals					
Human Food	3,276	3,755	3,154	-3.7	-16.0
Animal Feed	3,498	3,936	3,976	13.7	1.0
Lactose, Human and Animal	54,361	53,222	55,678	2.4	4.6
Whey					
Protein Concentrate					
Human ³	23,973	25,792	27,760	15.8	7.6
Animal ³	4,962	4,439	4,093	-17.5	-7.8
Total ³	28,935	30,231	31,853	10.1	5.4
25.0-49.9 Percent ⁴	22,494	22,613	23,964	6.5	6.0
50.0-89.9 Percent ⁴	6,441	7,618	7,889	22.5	3.6
Protein Isolates ⁵	2,370	2,152	2,192	-7.5	1.9
Manufacturers' Stocks End-of-Month ⁶					
	<i>1,000 Pounds</i>	<i>1,000 Pounds</i>	<i>1,000 Pounds</i>	<i>Percent</i>	<i>Percent</i>
Dry Whey Products					
Dry Whey, Human	36,480	33,445	34,077	-6.6	1.9
Dry Whey, Animal	5,806	3,216	4,604	-20.7	43.2
Dry Whey, Total	42,286	36,661	38,681	-8.5	5.5
Reduced Lactose and Minerals					
Human and Animal ⁷	7,006	5,342	4,362	-37.7	-18.3
Lactose, Human and Animal	70,421	48,001	50,590	-28.2	5.4
Whey					
Protein Concentrate					
Human ³	26,202	23,391	23,672	-9.7	1.2
Animal ³	3,523	2,224	2,026	-42.5	-8.9
Total ³	29,725	25,615	25,698	-13.5	0.3
25.0-49.9 Percent ⁴	20,736	16,388	15,888	-23.4	-3.1
50.0-89.9 Percent ⁴	8,989	9,227	9,810	9.1	6.3
Manufacturers' Selling Price ⁸					
	<i>Cents per Pound</i>	<i>Cents per Pound</i>	<i>Cents per Pound</i>	<i>Cents Change</i>	<i>Cents Change</i>
Dry Whey, Animal	20.3	26.3	26.9	6.6	0.6

¹ Revised.

² Final marketable product only. Does not include quantity used or shipped to another plant for further processing into dry whey or modified whey products. Does not include sweet-type, animal whey.

³ Whey Protein Concentrate, 25.0 to 89.9 percent.

⁴ Whey Protein Concentrate, Human and Animal.

⁵ Whey Protein Isolate, 90.0 percent or greater.

⁶ Stocks held by manufacturers at all points and in transit.

⁷ Reduced lactose and minerals stocks combined to avoid disclosure of individual operations.

⁸ Prices for bulk goods, f.o.b. plant. Average monthly prices reported by firms.

**Dairy Products: Production by Product and Month,
United States, 2004-2005 ¹**

Product and Month	By Month			Cumulative		
	2004	2005	Change From 2004	2004	2005	Change From 2004
	<i>1,000 Pounds</i>	<i>1,000 Pounds</i>	<i>Percent</i>	<i>1,000 Pounds</i>	<i>1,000 Pounds</i>	<i>Percent</i>
Total Cheese						
Jan	737,997	754,684	2.3	737,997	754,684	2.3
Feb	705,525	707,365	0.3	1,443,522	1,462,049	1.3
Mar	785,626	799,304	1.7	2,229,148	2,261,353	1.4
Apr	761,046	756,908	-0.5	2,990,194	3,018,261	0.9
May	752,051	785,539	4.5	3,742,245	3,803,800	1.6
Jun	715,332	762,689	6.6	4,457,577	4,566,489	2.4
Jul	708,739	737,713	4.1	5,166,316	5,304,202	2.7
Aug	719,538	754,063	4.8	5,885,854	6,058,265	2.9
Sep	714,357	741,953	3.9	6,600,211	6,800,218	3.0
Oct	748,044			7,348,255		
Nov	754,345			8,102,600		
Dec	773,863			8,876,463		
American Cheese						
Jan	318,986	322,188	1.0	318,986	322,188	1.0
Feb	295,990	293,137	-1.0	614,976	615,325	0.1
Mar	324,234	331,544	2.3	939,210	946,869	0.8
Apr	325,061	328,413	1.0	1,264,271	1,275,282	0.9
May	332,481	332,821	0.1	1,596,752	1,608,103	0.7
Jun	308,517	321,604	4.2	1,905,269	1,929,707	1.3
Jul	302,724	317,037	4.7	2,207,993	2,246,744	1.8
Aug	300,384	311,809	3.8	2,508,377	2,558,553	2.0
Sep	294,368	302,132	2.6	2,802,745	2,860,685	2.1
Oct	309,184			3,111,929		
Nov	302,611			3,414,540		
Dec	324,236			3,738,776		
Cheddar Cheese ²						
Jan	259,327	261,049	0.7	259,327	261,049	0.7
Feb	237,293	237,535	0.1	496,620	498,584	0.4
Mar	260,336	268,495	3.1	756,956	767,079	1.3
Apr	264,068	263,046	-0.4	1,021,024	1,030,125	0.9
May	272,736	266,543	-2.3	1,293,760	1,296,668	0.2
Jun	249,420	258,215	3.5	1,543,180	1,554,883	0.8
Jul	242,075	253,813	4.8	1,785,255	1,808,696	1.3
Aug	237,758	244,731	2.9	2,023,013	2,053,427	1.5
Sep	234,648	238,792	1.8	2,257,661	2,292,219	1.5
Oct	245,489			2,503,150		
Nov	242,353			2,745,503		
Dec	258,924			3,004,427		

See footnote(s) at end of table.

--continued

**Dairy Products: Production by Product and Month,
United States, 2004-2005 ¹ (continued)**

Product and Month	By Month			Cumulative		
	2004	2005	Change From 2004	2004	2005	Change From 2004
	<i>1,000 Pounds</i>	<i>1,000 Pounds</i>	<i>Percent</i>	<i>1,000 Pounds</i>	<i>1,000 Pounds</i>	<i>Percent</i>
Italian Cheese						
Jan	310,574	317,189	2.1	310,574	317,189	2.1
Feb	300,625	301,788	0.4	611,199	618,977	1.3
Mar	334,041	340,532	1.9	945,240	959,509	1.5
Apr	310,075	313,394	1.1	1,255,315	1,272,903	1.4
May	304,228	329,268	8.2	1,559,543	1,602,171	2.7
Jun	291,946	320,911	9.9	1,851,489	1,923,082	3.9
Jul	288,740	300,971	4.2	2,140,229	2,224,053	3.9
Aug	296,512	310,591	4.7	2,436,741	2,534,644	4.0
Sep	287,570	307,198	6.8	2,724,311	2,841,842	4.3
Oct	300,981			3,025,292		
Nov	313,306			3,338,598		
Dec	321,692			3,660,290		
Mozzarella						
Jan	248,207	251,399	1.3	248,207	251,399	1.3
Feb	241,259	239,290	-0.8	489,466	490,689	0.2
Mar	264,782	269,487	1.8	754,248	760,176	0.8
Apr	250,697	248,480	-0.9	1,004,945	1,008,656	0.4
May	246,988	262,483	6.3	1,251,933	1,271,139	1.5
Jun	234,934	254,662	8.4	1,486,867	1,525,801	2.6
Jul	228,220	242,877	6.4	1,715,087	1,768,678	3.1
Aug	232,497	243,552	4.8	1,947,584	2,012,230	3.3
Sep	225,064	241,928	7.5	2,172,648	2,254,158	3.8
Oct	235,938			2,408,586		
Nov	249,669			2,658,255		
Dec	258,281			2,916,536		
Other Italian						
Jan	62,367	65,790	5.5	62,367	65,790	5.5
Feb	59,366	62,498	5.3	121,733	128,288	5.4
Mar	69,259	71,045	2.6	190,992	199,333	4.4
Apr	59,378	64,914	9.3	250,370	264,247	5.5
May	57,240	66,785	16.7	307,610	331,032	7.6
Jun	57,012	66,249	16.2	364,622	397,281	9.0
Jul	60,520	58,094	-4.0	425,142	455,375	7.1
Aug	64,015	67,039	4.7	489,157	522,414	6.8
Sep	62,506	65,270	4.4	551,663	587,684	6.5
Oct	65,043			616,706		
Nov	63,637			680,343		
Dec	63,411			743,754		

See footnote(s) at end of table.

--continued

**Dairy Products: Production by Product and Month,
United States, 2004-2005 ¹ (continued)**

Product and Month	By Month			Cumulative		
	2004	2005	Change From 2004	2004	2005	Change From 2004
	<i>1,000 Pounds</i>	<i>1,000 Pounds</i>	<i>Percent</i>	<i>1,000 Pounds</i>	<i>1,000 Pounds</i>	<i>Percent</i>
Butter						
Jan	129,346	128,653	-0.5	129,346	128,653	-0.5
Feb	108,593	113,492	4.5	237,939	242,145	1.8
Mar	100,383	122,135	21.7	338,322	364,280	7.7
Apr	100,324	115,659	15.3	438,646	479,939	9.4
May	110,120	119,508	8.5	548,766	599,447	9.2
Jun	99,156	106,360	7.3	647,922	705,807	8.9
Jul	92,615	95,310	2.9	740,537	801,117	8.2
Aug	90,329	91,603	1.4	830,866	892,720	7.4
Sep	94,242	101,051	7.2	925,108	993,771	7.4
Oct	104,386			1,029,494		
Nov	101,376			1,130,870		
Dec	118,808			1,249,678		
Nonfat Dry Milk, Human						
Jan	129,320	93,775	-27.5	129,320	93,775	-27.5
Feb	115,769	94,334	-18.5	245,089	188,109	-23.2
Mar	117,981	109,049	-7.6	363,070	297,158	-18.2
Apr	134,011	111,223	-17.0	497,081	408,381	-17.8
May	151,291	124,105	-18.0	648,372	532,486	-17.9
Jun	144,095	124,642	-13.5	792,467	657,128	-17.1
Jul	134,566	110,667	-17.8	927,033	767,795	-17.2
Aug	113,617	86,870	-23.5	1,040,650	854,665	-17.9
Sep	93,936	71,172	-24.2	1,134,586	925,837	-18.4
Oct	94,814			1,229,400		
Nov	83,789			1,313,189		
Dec	93,201			1,406,390		
Total Dry Whey ³						
Jan	86,784	86,194	-0.7	86,784	86,194	-0.7
Feb	84,585	79,884	-5.6	171,369	166,078	-3.1
Mar	92,788	91,544	-1.3	264,157	257,622	-2.5
Apr	91,816	90,958	-0.9	355,973	348,580	-2.1
May	90,215	93,158	3.3	446,188	441,738	-1.0
Jun	86,681	89,588	3.4	532,869	531,326	-0.3
Jul	83,065	89,261	7.5	615,934	620,587	0.8
Aug	86,673	87,508	1.0	702,607	708,095	0.8
Sep	80,239	85,069	6.0	782,846	793,164	1.3
Oct	80,884			863,730		
Nov	83,609			947,339		
Dec	87,559			1,034,898		

See footnote(s) at end of table.

--continued

**Dairy Products: Production by Product and Month,
United States, 2004-2005 ¹ (continued)**

Product and Month	By Month			Cumulative		
	2004	2005	Change From 2004	2004	2005	Change From 2004
	<i>1,000 Pounds</i>	<i>1,000 Pounds</i>	<i>Percent</i>	<i>1,000 Pounds</i>	<i>1,000 Pounds</i>	<i>Percent</i>
Cream Cottage Cheese						
Jan	32,541	29,496	-9.4	32,541	29,496	-9.4
Feb	30,439	27,939	-8.2	62,980	57,435	-8.8
Mar	34,783	32,532	-6.5	97,763	89,967	-8.0
Apr	31,113	30,437	-2.2	128,876	120,404	-6.6
May	30,406	31,454	3.4	159,282	151,858	-4.7
Jun	30,862	31,410	1.8	190,144	183,268	-3.6
Jul	32,752	31,935	-2.5	222,896	215,203	-3.5
Aug	33,029	33,971	2.9	255,925	249,174	-2.6
Sep	32,130	32,747	1.9	288,055	281,921	-2.1
Oct	30,838			318,893		
Nov	30,298			349,191		
Dec	28,038			377,229		
Lowfat Cottage Cheese						
Jan	32,847	29,468	-10.3	32,847	29,468	-10.3
Feb	31,469	31,520	0.2	64,316	60,988	-5.2
Mar	36,032	33,230	-7.8	100,348	94,218	-6.1
Apr	32,158	32,589	1.3	132,506	126,807	-4.3
May	34,149	34,758	1.8	166,655	161,565	-3.1
Jun	34,236	33,889	-1.0	200,891	195,454	-2.7
Jul	32,462	31,966	-1.5	233,353	227,420	-2.5
Aug	33,972	36,362	7.0	267,325	263,782	-1.3
Sep	34,435	35,042	1.8	301,760	298,824	-1.0
Oct	31,112			332,872		
Nov	30,599			363,471		
Dec	27,748			391,219		
	<i>1,000 Gallons</i>	<i>1,000 Gallons</i>	<i>Percent</i>	<i>1,000 Gallons</i>	<i>1,000 Gallons</i>	<i>Percent</i>
Ice Cream, Hard						
Jan	60,148	60,440	0.5	60,148	60,440	0.5
Feb	64,848	64,240	-0.9	124,996	124,680	-0.3
Mar	78,409	78,232	-0.2	203,405	202,912	-0.2
Apr	76,836	77,426	0.8	280,241	280,338	
May	74,378	79,510	6.9	354,619	359,848	1.5
Jun	85,245	90,806	6.5	439,864	450,654	2.5
Jul	77,886	87,648	12.5	517,750	538,302	4.0
Aug	73,697	89,329	21.2	591,447	627,631	6.1
Sep	70,776	73,109	3.3	662,223	700,740	5.8
Oct	68,134			730,357		
Nov	59,116			789,473		
Dec	55,193			844,666		

See footnote(s) at end of table.

--continued

**Dairy Products: Production by Product and Month,
United States, 2004-2005 ¹ (continued)**

Product and Month	By Month			Cumulative		
	2004	2005	Change From 2004	2004	2005	Change From 2004
	<i>1,000 Gallons</i>	<i>1,000 Gallons</i>	<i>Percent</i>	<i>1,000 Gallons</i>	<i>1,000 Gallons</i>	<i>Percent</i>
Ice Cream, Lowfat						
Jan	26,381	27,079	2.6	26,381	27,079	2.6
Feb	28,440	28,083	-1.3	54,821	55,162	0.6
Mar	37,856	36,580	-3.4	92,677	91,742	-1.0
Apr	39,687	35,701	-10.0	132,364	127,443	-3.7
May	38,796	35,568	-8.3	171,160	163,011	-4.8
Jun	41,920	41,736	-0.4	213,080	204,747	-3.9
Jul	42,430	39,414	-7.1	255,510	244,161	-4.4
Aug	39,329	40,406	2.7	294,839	284,567	-3.5
Sep	34,495	32,466	-5.9	329,334	317,033	-3.7
Oct	31,233			360,567		
Nov	27,363			387,930		
Dec	27,544			415,474		
Ice Cream, NF, Hard						
Jan	1,359	1,164	-14.3	1,359	1,164	-14.3
Feb	1,462	1,619	10.7	2,821	2,783	-1.3
Mar	1,669	1,670	0.1	4,490	4,453	-0.8
Apr	2,009	1,642	-18.3	6,499	6,095	-6.2
May	1,757	1,745	-0.7	8,256	7,840	-5.0
Jun	1,904	1,855	-2.6	10,160	9,695	-4.6
Jul	1,725	1,966	14.0	11,885	11,661	-1.9
Aug	1,708	1,800	5.4	13,593	13,461	-1.0
Sep	1,455	1,494	2.7	15,048	14,955	-0.6
Oct	1,630			16,678		
Nov	1,118			17,796		
Dec	1,281			19,077		
Sherbet, Hard						
Jan	3,558	4,194	17.9	3,558	4,194	17.9
Feb	3,837	4,116	7.3	7,395	8,310	12.4
Mar	5,295	4,915	-7.2	12,690	13,225	4.2
Apr	4,665	5,047	8.2	17,355	18,272	5.3
May	4,714	5,022	6.5	22,069	23,294	5.6
Jun	5,602	5,710	1.9	27,671	29,004	4.8
Jul	4,700	5,408	15.1	32,371	34,412	6.3
Aug	4,690	5,685	21.2	37,061	40,097	8.2
Sep	4,214	4,987	18.3	41,275	45,084	9.2
Oct	3,638			44,913		
Nov	3,434			48,347		
Dec	2,920			51,267		

See footnote(s) at end of table.

--continued

**Dairy Products: Production by Product and Month,
United States, 2004-2005 (continued)**

Product and Month	By Month			Cumulative		
	2004	2005	Change From 2004	2004	2005	Change From 2004
	<i>1,000 Pounds</i>	<i>1,000 Pounds</i>	<i>Percent</i>	<i>1,000 Pounds</i>	<i>1,000 Pounds</i>	<i>Percent</i>
Sour Cream						
Jan	75,950	76,883	1.2	75,950	76,883	1.2
Feb	69,869	75,324	7.8	145,819	152,207	4.4
Mar	84,898	87,189	2.7	230,717	239,396	3.8
Apr	74,707	72,041	-3.6	305,424	311,437	2.0
May	75,132	85,130	13.3	380,556	396,567	4.2
Jun	80,905	83,642	3.4	461,461	480,209	4.1
Jul	76,850	77,890	1.4	538,311	558,099	3.7
Aug	82,337	92,610	12.5	620,648	650,709	4.8
Sep	77,726	79,003	1.6	698,374	729,712	4.5
Oct	83,612			781,986		
Nov	104,098			886,084		
Dec	94,078			980,162		

See footnote(s) at end of table.

--continued

**Dairy Products: Production by Product and Month,
United States, 2004-2005 (continued)**

Product and Month	By Month			Cumulative		
	2004	2005	Change From 2004	2004	2005	Change From 2004
	<i>1,000 Pounds</i>	<i>1,000 Pounds</i>	<i>Percent</i>	<i>1,000 Pounds</i>	<i>1,000 Pounds</i>	<i>Percent</i>
Yogurt						
Jan	217,302	223,206	2.7	217,302	223,206	2.7
Feb	216,153	237,598	9.9	433,455	460,804	6.3
Mar	247,890	265,285	7.0	681,345	726,089	6.6
Apr	226,545	251,984	11.2	907,890	978,073	7.7
May	242,139	262,207	8.3	1,150,029	1,240,280	7.8
Jun	241,514	252,992	4.8	1,391,543	1,493,272	7.3
Jul	212,831	227,077	6.7	1,604,374	1,720,349	7.2
Aug	230,018	250,022	8.7	1,834,392	1,970,371	7.4
Sep	243,742	260,850	7.0	2,078,134	2,231,221	7.4
Oct	223,663			2,301,797		
Nov	193,091			2,494,888		
Dec	213,766			2,708,654		

See footnote(s) at end of table.

--continued

**Dairy Products: Production by Product and Month,
United States, 2004-2005 ¹ (continued)**

Product and Month	By Month			Cumulative		
	2004	2005	Change From 2004	2004	2005	Change From 2004
	<i>1,000 Gallons</i>	<i>1,000 Gallons</i>	<i>Percent</i>	<i>1,000 Gallons</i>	<i>1,000 Gallons</i>	<i>Percent</i>
Frozen Yogurt						
Jan	5,141	4,299	-16.4	5,141	4,299	-16.4
Feb	5,448	4,457	-18.2	10,589	8,756	-17.3
Mar	6,269	6,010	-4.1	16,858	14,766	-12.4
Apr	6,369	5,345	-16.1	23,227	20,111	-13.4
May	6,148	6,241	1.5	29,375	26,352	-10.3
Jun	6,580	6,064	-7.8	35,955	32,416	-9.8
Jul	5,704	5,600	-1.8	41,659	38,016	-8.7
Aug	6,137	5,938	-3.2	47,796	43,954	-8.0
Sep	5,753	5,153	-10.4	53,549	49,107	-8.3
Oct	5,270			58,819		
Nov	4,705			63,524		
Dec	4,148			67,672		

¹ August 2005 data revised.

² Monthly 2004 data revised. January 2005 data revised.

³ Excludes all modified dry whey products.

**Total Cheese, Excluding Cottage Cheese: Production by
State and United States, September 2004-2005**

State	Sep 2004	Aug ¹ 2005	Sep 2005	Change From	
				Sep 2004	Aug 2005
	<i>1,000 Pounds</i>	<i>1,000 Pounds</i>	<i>1,000 Pounds</i>	<i>Percent</i>	<i>Percent</i>
CA	160,253	175,424	173,456	8.2	-1.1
ID	61,860				
IL	7,281	8,113	7,878	8.2	-2.9
IA	12,323	13,116	12,258	-0.5	-6.5
MA	74	50	52	-29.7	4.0
MN	47,534	49,834	48,683	2.4	-2.3
MO	10,352				
NY	56,104	57,927	58,327	4.0	0.7
OH	15,137	16,705	16,299	7.7	-2.4
PA	28,604	33,518	32,265	12.8	-3.7
SD	13,062	14,051	13,810	5.7	-1.7
UT	5,036	5,768	5,784	14.9	0.3
WI	192,370	204,686	199,237	3.6	-2.7
Oth Sts ²	104,367	174,871	173,904	66.6	-0.6
US	714,357	754,063	741,953	3.9	-1.6
N Atlantic	100,304	108,164	106,271	5.9	-1.8
S Atlantic	2,418	2,693	2,423	0.2	-10.0
E N Central	224,053	238,882	232,836	3.9	-2.5
W N Central	86,122	81,610	79,825	-7.3	-2.2
S Central	7,625	9,296	10,604	39.1	14.1
West	293,835	313,418	309,994	5.5	-1.1

¹ Revised.

² States not shown when fewer than 3 plants reported or individual plant operations could be disclosed. Percent change shown only when comparable States are included in the calculation.

American Cheese: Production by State and United States, September 2004-2005

State	Sep 2004	Aug ¹ 2005	Sep 2005	Change From	
				Sep 2004	Aug 2005
	<i>1,000 Pounds</i>	<i>1,000 Pounds</i>	<i>1,000 Pounds</i>	<i>Percent</i>	<i>Percent</i>
CA	66,163	70,216	67,197	1.6	-4.3
IA	9,980	10,160	9,443	-5.4	-7.1
MN	45,217	47,097	46,161	2.1	-2.0
NY	4,679	5,391	5,094	8.9	-5.5
OH	2,203	3,466	2,993	35.9	-13.6
OR	9,334	9,866	9,855	5.6	-0.1
WI	65,796	72,215	68,998	4.9	-4.5
Oth Sts ²	90,996	93,398	92,391	1.5	-1.1
US	294,368	311,809	302,132	2.6	-3.1
Atlantic	9,837	11,205	9,828	-0.1	-12.3
E N Central	68,954	76,610	72,783	5.6	-5.0
W N Central	62,076	64,874	62,918	1.4	-3.0
S Central	4,748	3,059	3,839	-19.1	25.5
West	148,753	156,061	152,764	2.7	-2.1

¹ Revised.

² States not shown when fewer than 3 plants reported or individual plant operations could be disclosed. Percent change shown only when comparable States are included in the calculation.

Cheddar Cheese: Production by State and United States, September 2004-2005

State	Sep ¹ 2004	Aug ² 2005	Sep 2005	Change From	
				Sep 2004	Aug 2005
	<i>1,000 Pounds</i>	<i>1,000 Pounds</i>	<i>1,000 Pounds</i>	<i>Percent</i>	<i>Percent</i>
CA	41,814	40,323	39,871	-4.6	-1.1
MN	40,604	42,469	41,350	1.8	-2.6
NY	4,542	5,198	4,975	9.5	-4.3
WI	49,939	57,016	53,480	7.1	-6.2
Oth Sts ³	97,749	99,725	99,116	1.4	-0.6
US	234,648	244,731	238,792	1.8	-2.4
Atlantic	9,284	10,772	9,432	1.6	-12.4
E N Cen	51,794	59,288	55,399	7.0	-6.6
W N Cen	53,042	53,880	52,926	-0.2	-1.8
S Cen	4,747	3,058	3,838	-19.1	25.5
West	115,781	117,733	117,197	1.2	-0.5

¹ Revised 2004 Cheddar Cheese data released in the May 5, 2005 Dairy Products Report.

² Revised.

³ States not shown when fewer than 3 plants reported or individual plant operations could be disclosed. Percent change shown only when comparable States are included in the calculation.

Mozzarella Cheese: Production by State and United States, September 2004-2005

State	Sep 2004	Aug ¹ 2005	Sep 2005	Change From	
				Sep 2004	Aug 2005
	<i>1,000 Pounds</i>	<i>1,000 Pounds</i>	<i>1,000 Pounds</i>	<i>Percent</i>	<i>Percent</i>
CA	70,750	79,776	79,802	12.8	
NY	11,674	14,521	14,790	26.7	1.9
PA	12,599	16,301	15,797	25.4	-3.1
WI	66,985	68,069	68,000	1.5	-0.1
Oth Sts ²	63,056	64,885	63,539	0.8	-2.1
US	225,064	243,552	241,928	7.5	-0.7
Atlantic ³	31,668	39,312	38,659	22.1	-1.7
E N Central	75,546	76,650	76,632	1.4	
West	110,314	119,344	118,568	7.5	-0.7

¹ Revised.

² States not shown when fewer than 3 plants reported or individual plant operations could be disclosed. Percent change shown only when comparable States are included in the calculation.

³ Region totals may not add to U.S. when compiled regions could not be disclosed.

Butter: Production by State and United States, September 2004-2005

State	Sep 2004	Aug ¹ 2005	Sep 2005	Change From	
				Sep 2004	Aug 2005
	<i>1,000 Pounds</i>	<i>1,000 Pounds</i>	<i>1,000 Pounds</i>	<i>Percent</i>	<i>Percent</i>
CA	34,034	31,887	35,295	3.7	10.7
NY	1,154	739	1,203	4.2	62.8
PA	2,238	3,241	5,651	152.5	74.4
WI	26,603	26,890	26,900	1.1	
Oth Sts ²	30,213	28,846	32,002	5.9	10.9
US	94,242	91,603	101,051	7.2	10.3
N Atlantic ³	6,025	5,131	8,417	39.7	64.0
E N Central	27,990	28,709	28,552	2.0	-0.5
W N Central	7,375	4,390	4,891	-33.7	11.4
West	45,646	46,711	50,936	11.6	9.0

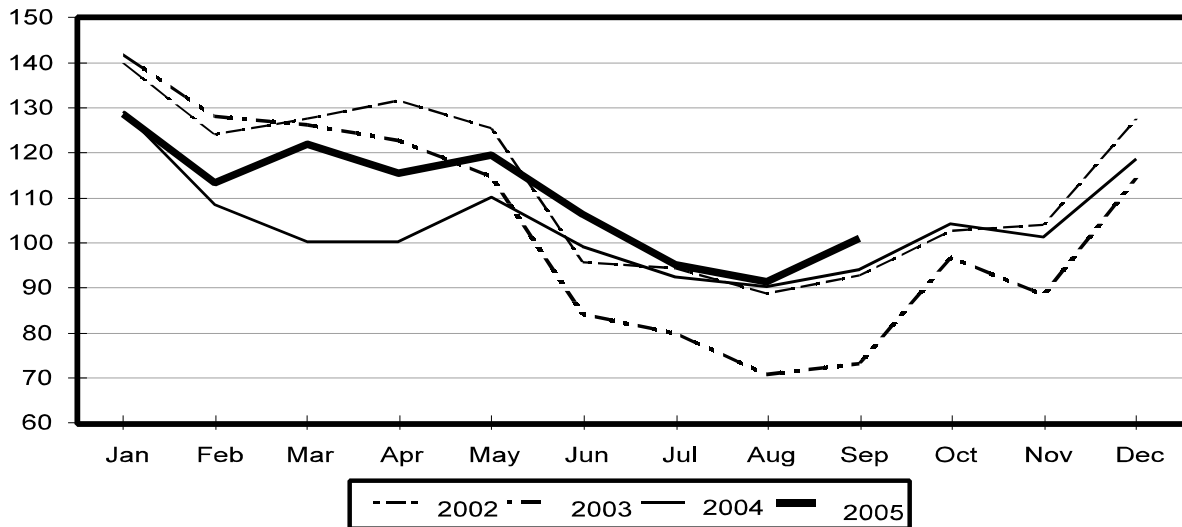
¹ Revised.

² States not shown when fewer than 3 plants reported or individual plant operations could be disclosed. Percent change shown only when comparable States are included in the calculation.

³ Region totals may not add to U.S. when compiled regions could not be disclosed.

Total Butter Production United States

Million Pounds



**Nonfat Dry Milk, Human: Production by State
and United States, September 2004-2005**

State	Sep 2004	Aug ¹ 2005	Sep 2005	Change From	
				Sep 2004	Aug 2005
	<i>1,000 Pounds</i>	<i>1,000 Pounds</i>	<i>1,000 Pounds</i>	<i>Percent</i>	<i>Percent</i>
CA	59,929	37,698	35,010	-41.6	-7.1
PA	2,223	4,580	4,368	96.5	-4.6
Oth Sts ²	31,784	44,592	31,794		-28.7
US	93,936	86,870	71,172	-24.2	-18.1
Atlantic	5,413	9,899	7,183	32.7	-27.4
E N Central	1,280	3,889	3,091	141.5	-20.5
W N Central	2,227	3,807	2,454	10.2	-35.5
S Central	2,630	5,303	4,321	64.3	-18.5
West	82,386	63,972	54,123	-34.3	-15.4

¹ Revised.

² States not shown when fewer than 3 plants reported or individual plant operations could be disclosed. Percent change shown only when comparable States are included in the calculation.

**Dry Whey, Human: Production by State
and United States, September 2004-2005**

State	Sep 2004	Aug ¹ 2005	Sep 2005	Change From	
				Sep 2004	Aug 2005
	<i>1,000 Pounds</i>	<i>1,000 Pounds</i>	<i>1,000 Pounds</i>	<i>Percent</i>	<i>Percent</i>
CA	10,491	10,800	10,253	-2.3	-5.1
MN		4,125	3,729		-9.6
NY	8,736	9,259	10,482	20.0	13.2
PA	6,114	7,623	7,345	20.1	-3.6
UT	1,572	1,963	1,980	26.0	0.9
WI	23,906	25,820	24,349	1.9	-5.7
Oth Sts ²	23,175	20,628	20,053	-13.5	-2.8
US	73,994	80,218	78,191	5.7	-2.5
Atlantic	14,850	16,882	17,827	20.0	5.6
Central	35,784	38,061	35,987	0.6	-5.4
West	23,360	25,275	24,377	4.4	-3.6

¹ Revised.

² States not shown when fewer than 3 plants reported or individual plant operations could be disclosed. Percent change shown only when comparable States are included in the calculation.

Ice Cream, Hard: Production by State and United States, September 2004-2005

State	Sep 2004	Aug ¹ 2005	Sep 2005	Change From	
				Sep 2004	Aug 2005
	<i>1,000 Gallons</i>	<i>1,000 Gallons</i>	<i>1,000 Gallons</i>	<i>Percent</i>	<i>Percent</i>
CA	10,915	15,204	12,691	16.3	-16.5
FL	1,521	1,750	1,720	13.1	-1.7
IL	2,953	4,526	3,103	5.1	-31.4
IN	8,339	7,249	7,527	-9.7	3.8
MD	1,725	1,456	1,395	-19.1	-4.2
MA	4,508	4,990	4,035	-10.5	-19.1
MI	1,536	1,667	1,518	-1.2	-8.9
MN	3,707	4,159	3,857	4.0	-7.3
MO	1,461	2,136	1,793	22.7	-16.1
NY	2,308	2,630	2,157	-6.5	-18.0
NC	1,073	1,518	1,237	15.3	-18.5
OH	2,080	2,722	2,070	-0.5	-24.0
OR	1,144	1,383	1,130	-1.2	-18.3
PA	3,603	4,749	2,985	-17.2	-37.1
TN	1,256	1,621	1,285	2.3	-20.7
TX	3,635	5,314	4,237	16.6	-20.3
UT	2,154	2,621	2,268	5.3	-13.5
Oth Sts ²	16,858	23,634	18,101	7.4	-23.4
US	70,776	89,329	73,109	3.3	-18.2
N Atlantic	12,599	17,216	13,216	4.9	-23.2
S Atlantic	5,630	6,200	5,515	-2.0	-11.0
E N Central	15,591	17,091	14,974	-4.0	-12.4
W N Central	11,123	14,503	10,882	-2.2	-25.0
S Central	8,392	11,503	9,168	9.2	-20.3
West	17,441	22,816	19,354	11.0	-15.2

¹ Revised.

² States not shown when fewer than 3 plants reported or individual plant operations could be disclosed. Percent change shown only when comparable States are included in the calculation.

**Canned Milk and Dry Milk Products: Manufacturers' Shipments,
and Stocks, September, 2004-2005**

Product	Sep 2004	Aug 2005 ¹	Sep 2005	Change From	
				Sep 2004	Aug 2005
	Manufacturers' Shipments ²				
	<i>1,000 Pounds</i>	<i>1,000 Pounds</i>	<i>1,000 Pounds</i>	<i>Percent</i>	<i>Percent</i>
Nonfat Dry Milk, Human	105,011	70,580	69,819	-33.5	-1.1
	Manufacturers' Stocks End-of-Month ³				
	<i>1,000 Pounds</i>	<i>1,000 Pounds</i>	<i>1,000 Pounds</i>	<i>Percent</i>	<i>Percent</i>
Canned Evaporated and Condensed Whole Milk	77,637	77,369	66,220	-14.7	-14.4
Nonfat Dry Milk, Human	127,591	109,637	98,239	-23.0	-10.4
Dry Buttermilk, Total	6,532	7,011	7,369	12.8	5.1

¹ Revised.

² For dry products, shipments of bulk goods only.

³ Stocks held by manufacturers at all points and in transit.

Procedures and Reliability: Estimates included in this report are based on data provided each month by manufacturers of these products. In 32 States, the State Departments of Agriculture assist in collection of data, which eliminates duplicate reporting and reduces respondent burden. Data are collected by mail, personal and telephone interviews following the close of each month. There were 1,096 manufacturers that made one or more products in 2004. Each month, reports are generally received from all dairy plants in States with small numbers of plants. In States with large numbers of plants, survey procedures are designed to obtain monthly reports from all large plants and from a sample of small plants. Monthly estimates are based upon returns from about 70 percent of the plants which account for 70 to 90 percent of the total production of major dairy products.

Revision Policy: Monthly estimates are subject to revision the month following the preliminary estimates. Annual estimates are published in the "**Dairy Products**" report published each April which includes any revisions made to current and previous year. An attempt is made to get information from all plants for preparing these estimates

ACCESS TO REPORTS!!

For your convenience, there are several ways to obtain NASS reports, data products, and services:

INTERNET ACCESS

All NASS reports are available free of charge on the worldwide Internet. For access, connect to the Internet and go to the NASS Home Page at: www.usda.gov/nass/. Select "Today's Reports" or Publications and then Reports Calendar or Publications and then Search, by Title or Subject.

E-MAIL SUBSCRIPTION

All NASS reports are available by subscription free of charge direct to your e-mail address. Starting with the NASS Home Page at www.usda.gov/nass/, click on **Publications**, then click on the **Subscribe by E-mail** button which takes you to the page describing e-mail delivery of reports. Finally, click on **Go to the Subscription Page** and follow the instructions.

PRINTED REPORTS OR DATA PRODUCTS

CALL OUR TOLL-FREE ORDER DESK: 800-999-6779 (U.S. and Canada)
Other areas, please call 703-605-6220 FAX: 703-605-6900
(Visa, MasterCard, check, or money order acceptable for payment.)

ASSISTANCE

For **assistance** with general agricultural statistics or further information about NASS or its products or services, contact the **Agricultural Statistics Hotline** at **800-727-9540**, 7:30 a.m. to 4:00 p.m. ET, or e-mail: nass@nass.usda.gov.

The U.S. Department of Agriculture (USDA) prohibits discrimination in all its programs and activities on the basis of race, color, national origin, age, disability, and where applicable, sex, marital status, familial status, parental status, religion, sexual orientation, genetic information, political beliefs, reprisal, or because all or part of an individual's income is derived from any public assistance program. (Not all prohibited bases apply to all programs.) Persons with disabilities who require alternative means for communication of program information (Braille, large print, audiotape, etc.) should contact USDA's TARGET Center at (202) 720-2600 (voice and TDD).

To file a complaint of discrimination, write to USDA, Director, Office of Civil Rights, 1400 Independence Avenue, S.W., Washington, D.C. 20250-9410, or call (800) 795-3272 (voice) or (202) 720-6382 (TDD). USDA is an equal opportunity provider and employer.