



# NASS

FACT FINDERS FOR AGRICULTURE  
UNITED STATES DEPARTMENT OF AGRICULTURE

Washington, D.C.

# Dairy Products

---

Released December 2, 2005, by the National Agricultural Statistics Service (NASS), Agricultural Statistics Board, U.S. Department of Agriculture. For information on *Dairy Products* call Shawn Clark at (202) 690-3236, office hours 7:30 a.m. to 4:00 p.m. ET.

## October 2005 Highlights

**Total cheese** output (excluding cottage cheese) was 755 million pounds, 0.9 percent above October 2004 and 1.7 percent above September 2005.

**American type cheese** production totaled 310 million pounds, 0.3 percent above October 2004 and 2.8 percent above September 2005.

**Butter** production was 108 million pounds, 3.0 percent above October 2004 and 7.4 percent above September 2005.

**Frozen dessert:** (comparisons with October 2004)

Ice cream, Regular (hard) --- 69.1 million gallons, up 1.3 percent.

Ice cream, Lowfat (total) --- 29.5 million gallons, down 5.6 percent.

Ice cream, Nonfat (hard) --- 1.40 million gallons, down 14.3 percent.

Sherbet (hard) --- 3.90 million gallons, up 7.3 percent.

Frozen Yogurt (total) --- 4.65 million gallons, down 11.8 percent.

**Nonfat dry milk for human food:** (compared with October 2004) --- 73.7 million pounds, down 22.2 percent.

**Dry whey products:** (comparisons with October 2004)

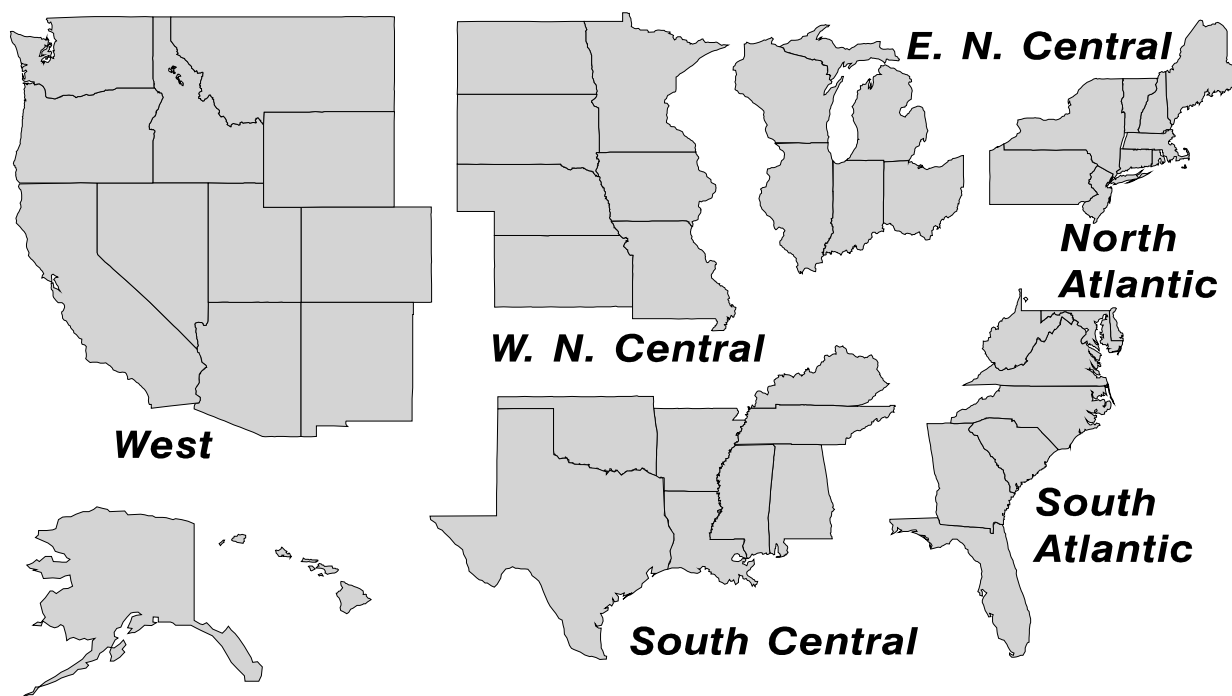
Dry whey, human --- 75.9 million pounds, up 0.9 percent.

Dry whey, animal --- 6.46 million pounds, up 13.1 percent.

Dry whey, total --- 82.3 million pounds, up 1.8 percent.

## U. S. Geographic Regions Dairy Products

State totals are not published when fewer than 3 firms have reported or one firm comprises more than 60 percent of the State total. If we are not able to publish a region for confidentiality reasons, it will be combined with other regions when possible. For example, if North Atlantic can not be published, then it will be combined with South Atlantic to publish Atlantic. The West North Central and East North Central will be combined, if necessary, to form North Central. In the event that neither could be published, they may be combined with South Central to publish Central. Some tables will have only limited regions shown, therefore the regions may not add to the United States total.



**Contents**

**Page**

Dairy Products: Production by Product, United States, September, 2004-2005 ..... 1

Whey and Modified Whey Products: Production, Stocks, and Prices,  
United States, September, 2004-2005 ..... 2

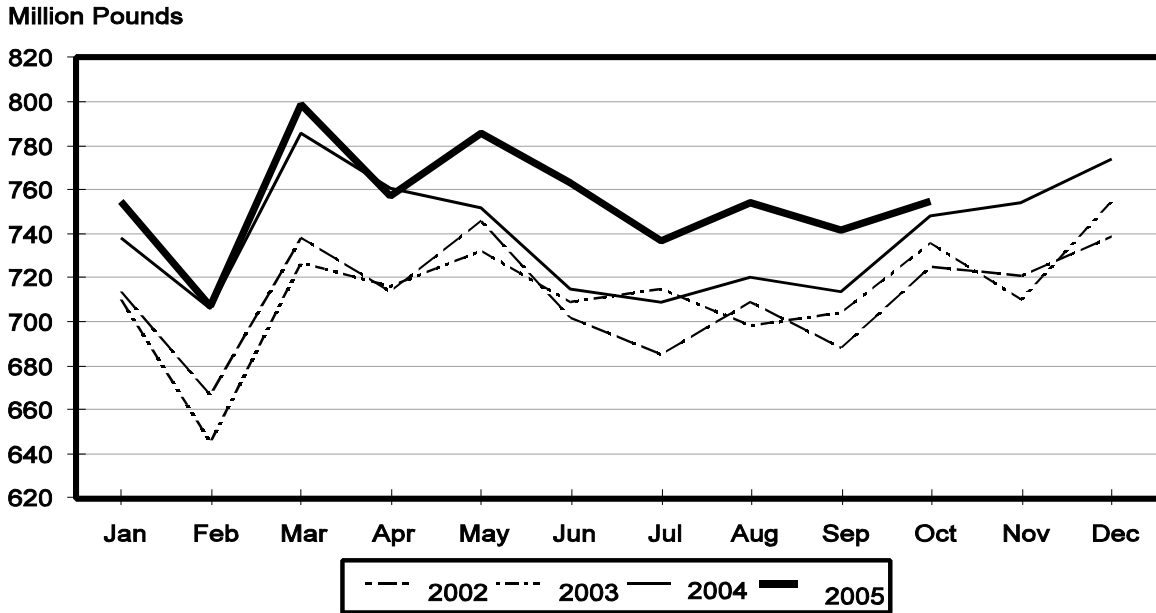
Dairy Products: Production by Product and Month, United States, 2004-2005 ..... 3

Select Commodities by State and United States, September, 2004-2005 ..... 10

Canned Milk and Dry Milk Products: Manufacturer’s Shipments, Stocks, and Selling Prices,  
September, 2004-2005 ..... 15

Procedures and Reliability ..... 16

## Total Cheese Production United States



**Dairy Products: Production by Product,  
United States, October, 2004-2005**

Product	Oct 2004	Sep 2005 <sup>1</sup>	Oct 2005	Change From	
				Oct 2004	Sep 2005
	<i>1,000 Pounds</i>	<i>1,000 Pounds</i>	<i>1,000 Pounds</i>	<i>Percent</i>	<i>Percent</i>
Butter	104,386	100,095	107,506	3.0	7.4
Cheese					
American Types <sup>2</sup>	309,184	301,737	310,098	0.3	2.8
Cheddar <sup>3</sup>	245,489	239,514	246,583	0.4	3.0
Swiss	23,558	23,862	24,791	5.2	3.9
Brick and Muenster	7,272	6,516	6,467	-11.1	-0.8
Cream and Neufchatel	73,531	65,878	67,291	-8.5	2.1
Hispanic	13,016	14,634	14,464	11.1	-1.2
Mozzarella	235,938	242,011	242,479	2.8	0.2
Other Italian Types	65,043	65,429	66,468	2.2	1.6
Total Italian Types	300,981	307,440	308,947	2.6	0.5
All Other Types	20,502	21,844	22,676	10.6	3.8
Total	748,044	741,911	754,734	0.9	1.7
Cottage Cheese, Curd <sup>4</sup>	38,070	40,514	37,854	-0.6	-6.6
Cottage Cheese, Cream <sup>5</sup>	30,838	32,920	30,462	-1.2	-7.5
Cottage Cheese, Lowfat <sup>6</sup>	31,112	34,363	32,594	4.8	-5.1
Canned Evaporated and Condensed Whole Milk	44,629	39,862	38,724	-13.2	-2.9
Dry Whole Milk	3,156	2,287	2,822	-10.6	23.4
Nonfat Dry Milk, Human	94,814	71,053	73,745	-22.2	3.8
Dry Skim Milk, Animal	365	530	420	15.1	-20.8
Dry Buttermilk	4,052	4,071	4,311	6.4	5.9
Sour Cream	83,612	79,014	87,104	4.2	10.2
Yogurt, Plain & Flavored	223,663	262,708	237,433	6.2	-9.6
	<i>1,000 Gallons</i>	<i>1,000 Gallons</i>	<i>1,000 Gallons</i>	<i>Percent</i>	<i>Percent</i>
Frozen Products					
Ice Cream, Hard	68,134	72,571	69,053	1.3	-4.8
Ice Cream, Lowfat, Hard	9,497	10,456	9,031	-4.9	-13.6
Ice Cream, Lowfat, Soft	21,736	22,084	20,461	-5.9	-7.3
Ice Cream, Lowfat, Total	31,233	32,540	29,492	-5.6	-9.4
Ice Cream, Nonfat, Hard	1,630	1,501	1,397	-14.3	-6.9
Sherbet, Hard	3,638	4,938	3,904	7.3	-20.9
Water and Juice Ices	4,190	4,897	4,093	-2.3	-16.4
Frozen Yogurt, Total	5,270	5,149	4,648	-11.8	-9.7
Regular & Lowfat, Hard	1,562	1,588	1,357	-13.1	-14.5
Nonfat, Hard	843	988	873	3.6	-11.6
Other Frozen Dairy Products	475	553	487	2.5	-11.9
Mix for Frozen Products					
Ice Cream Mix	37,164	40,112	36,710	-1.2	-8.5
Ice Cream, Lowfat, Mix	16,434	17,980	16,313	-0.7	-9.3
Ice Cream, Nonfat, Mix	1,161	1,010	1,048	-9.7	3.8
Sherbet Mix	2,698	3,283	2,713	0.6	-17.4
Yogurt Mix	2,919	3,029	2,734	-6.3	-9.7

<sup>1</sup> Revised.

<sup>2</sup> Includes Cheddar, Colby, Monterey, and Jack.

<sup>3</sup> Revised 2004 Cheddar Cheese data released in the May 5, 2005 Dairy Products Report.

<sup>4</sup> Mostly used for processing into cream or lowfat cottage cheese.

<sup>5</sup> Fat content 4 percent or more.

<sup>6</sup> Fat content less than 4 percent.

**Whey and Modified Whey Products: Production, Stocks,  
and Prices, United States, October, 2004-2005**

Product	Oct 2004	Sep 2005 <sup>1</sup>	Oct 2005	Change From	
				Oct 2004	Sep 2005
<b>Production</b>					
	<i>1,000 Pounds</i>	<i>1,000 Pounds</i>	<i>1,000 Pounds</i>	<i>Percent</i>	<i>Percent</i>
Condensed Whey, Solids Content <sup>2</sup>					
Sweet-Type, Human	7,454	6,804	5,414	-27.4	-20.4
Dry Whey Products					
Dry Whey, Human	75,175	77,262	75,865	0.9	-1.8
Dry Whey, Animal	5,709	6,676	6,455	13.1	-3.3
Dry Whey, Total	80,884	83,938	82,320	1.8	-1.9
Reduced Lactose and Minerals					
Human Food	2,955	3,257	2,687	-9.1	-17.5
Animal Feed	3,658	3,975	3,904	6.7	-1.8
Lactose, Human and Animal	56,238	55,596	50,553	-10.1	-9.1
Whey					
Protein Concentrate					
Human <sup>3</sup>	24,366	28,069	27,702	13.7	-1.3
Animal <sup>3</sup>	5,097	4,053	3,970	-22.1	-2.0
Total <sup>3</sup>	29,463	32,122	31,672	7.5	-1.4
25.0-49.9 Percent <sup>4</sup>	23,306	24,032	22,763	-2.3	-5.3
50.0-89.9 Percent <sup>4</sup>	6,157	8,090	8,909	44.7	10.1
Protein Isolates <sup>5</sup>	2,504	2,380	2,441	-2.5	2.6
<b>Manufacturers' Stocks End-of-Month <sup>6</sup></b>					
	<i>1,000 Pounds</i>	<i>1,000 Pounds</i>	<i>1,000 Pounds</i>	<i>Percent</i>	<i>Percent</i>
Dry Whey Products					
Dry Whey, Human	32,816	33,503	33,067	0.8	-1.3
Dry Whey, Animal	3,752	4,288	3,818	1.8	-11.0
Dry Whey, Total	36,568	37,791	36,885	0.9	-2.4
Reduced Lactose and Minerals					
Human and Animal <sup>7</sup>	5,826	4,319	3,393	-41.8	-21.4
Lactose, Human and Animal	74,841	49,941	50,396	-32.7	0.9
Whey					
Protein Concentrate					
Human <sup>3</sup>	25,549	23,518	23,519	-7.9	
Animal <sup>3</sup>	3,129	2,029	2,206	-29.5	8.7
Total <sup>3</sup>	28,678	25,547	25,725	-10.3	0.7
25.0-49.9 Percent <sup>4</sup>	20,550	15,860	16,204	-21.1	2.2
50.0-89.9 Percent <sup>4</sup>	8,128	9,687	9,521	17.1	-1.7
<b>Manufacturers' Selling Price <sup>8</sup></b>					
	<i>Cents per Pound</i>	<i>Cents per Pound</i>	<i>Cents per Pound</i>	<i>Cents Change</i>	<i>Cents Change</i>
Dry Whey, Animal	21.4	27.1	26.2	4.8	-0.9

<sup>1</sup> Revised.

<sup>2</sup> Final marketable product only. Does not include quantity used or shipped to another plant for further processing into dry whey or modified whey products. Does not include sweet-type, animal whey.

<sup>3</sup> Whey Protein Concentrate, 25.0 to 89.9 percent.

<sup>4</sup> Whey Protein Concentrate, Human and Animal.

<sup>5</sup> Whey Protein Isolate, 90.0 percent or greater.

<sup>6</sup> Stocks held by manufacturers at all points and in transit.

<sup>7</sup> Reduced lactose and minerals stocks combined to avoid disclosure of individual operations.

<sup>8</sup> Prices for bulk goods, f.o.b. plant. Average monthly prices reported by firms.

**Dairy Products: Production by Product and Month,  
United States, 2004-2005 <sup>1</sup>**

Product and Month	By Month			Cumulative		
	2004	2005	Change From 2004	2004	2005	Change From 2004
	<i>1,000 Pounds</i>	<i>1,000 Pounds</i>	<i>Percent</i>	<i>1,000 Pounds</i>	<i>1,000 Pounds</i>	<i>Percent</i>
<b>Total Cheese</b>						
Jan	737,997	754,684	2.3	737,997	754,684	2.3
Feb	705,525	707,365	0.3	1,443,522	1,462,049	1.3
Mar	785,626	799,304	1.7	2,229,148	2,261,353	1.4
Apr	761,046	756,908	-0.5	2,990,194	3,018,261	0.9
May	752,051	785,539	4.5	3,742,245	3,803,800	1.6
Jun	715,332	762,689	6.6	4,457,577	4,566,489	2.4
Jul	708,739	737,713	4.1	5,166,316	5,304,202	2.7
Aug	719,538	754,063	4.8	5,885,854	6,058,265	2.9
Sep	714,357	741,911	3.9	6,600,211	6,800,176	3.0
Oct	748,044	754,734	0.9	7,348,255	7,554,910	2.8
Nov	754,345			8,102,600		
Dec	773,863			8,876,463		
<b>American Cheese</b>						
Jan	318,986	322,188	1.0	318,986	322,188	1.0
Feb	295,990	293,137	-1.0	614,976	615,325	0.1
Mar	324,234	331,544	2.3	939,210	946,869	0.8
Apr	325,061	328,413	1.0	1,264,271	1,275,282	0.9
May	332,481	332,821	0.1	1,596,752	1,608,103	0.7
Jun	308,517	321,604	4.2	1,905,269	1,929,707	1.3
Jul	302,724	317,037	4.7	2,207,993	2,246,744	1.8
Aug	300,384	311,809	3.8	2,508,377	2,558,553	2.0
Sep	294,368	301,737	2.5	2,802,745	2,860,290	2.1
Oct	309,184	310,098	0.3	3,111,929	3,170,388	1.9
Nov	302,611			3,414,540		
Dec	324,236			3,738,776		
<b>Cheddar Cheese <sup>2</sup></b>						
Jan	259,327	261,049	0.7	259,327	261,049	0.7
Feb	237,293	237,535	0.1	496,620	498,584	0.4
Mar	260,336	268,495	3.1	756,956	767,079	1.3
Apr	264,068	263,046	-0.4	1,021,024	1,030,125	0.9
May	272,736	266,543	-2.3	1,293,760	1,296,668	0.2
Jun	249,420	258,215	3.5	1,543,180	1,554,883	0.8
Jul	242,075	253,813	4.8	1,785,255	1,808,696	1.3
Aug	237,758	244,731	2.9	2,023,013	2,053,427	1.5
Sep	234,648	239,514	2.1	2,257,661	2,292,941	1.6
Oct	245,489	246,583	0.4	2,503,150	2,539,524	1.5
Nov	242,353			2,745,503		
Dec	258,924			3,004,427		

See footnote(s) at end of table.

--continued

**Dairy Products: Production by Product and Month,  
United States, 2004-2005 <sup>1</sup> (continued)**

Product and Month	By Month			Cumulative		
	2004	2005	Change From 2004	2004	2005	Change From 2004
	<i>1,000 Pounds</i>	<i>1,000 Pounds</i>	<i>Percent</i>	<i>1,000 Pounds</i>	<i>1,000 Pounds</i>	<i>Percent</i>
Italian Cheese						
Jan	310,574	317,189	2.1	310,574	317,189	2.1
Feb	300,625	301,788	0.4	611,199	618,977	1.3
Mar	334,041	340,532	1.9	945,240	959,509	1.5
Apr	310,075	313,394	1.1	1,255,315	1,272,903	1.4
May	304,228	329,268	8.2	1,559,543	1,602,171	2.7
Jun	291,946	320,911	9.9	1,851,489	1,923,082	3.9
Jul	288,740	300,971	4.2	2,140,229	2,224,053	3.9
Aug	296,512	310,591	4.7	2,436,741	2,534,644	4.0
Sep	287,570	307,440	6.9	2,724,311	2,842,084	4.3
Oct	300,981	308,947	2.6	3,025,292	3,151,031	4.2
Nov	313,306			3,338,598		
Dec	321,692			3,660,290		
Mozzarella						
Jan	248,207	251,399	1.3	248,207	251,399	1.3
Feb	241,259	239,290	-0.8	489,466	490,689	0.2
Mar	264,782	269,487	1.8	754,248	760,176	0.8
Apr	250,697	248,480	-0.9	1,004,945	1,008,656	0.4
May	246,988	262,483	6.3	1,251,933	1,271,139	1.5
Jun	234,934	254,662	8.4	1,486,867	1,525,801	2.6
Jul	228,220	242,877	6.4	1,715,087	1,768,678	3.1
Aug	232,497	243,552	4.8	1,947,584	2,012,230	3.3
Sep	225,064	242,011	7.5	2,172,648	2,254,241	3.8
Oct	235,938	242,479	2.8	2,408,586	2,496,720	3.7
Nov	249,669			2,658,255		
Dec	258,281			2,916,536		
Other Italian						
Jan	62,367	65,790	5.5	62,367	65,790	5.5
Feb	59,366	62,498	5.3	121,733	128,288	5.4
Mar	69,259	71,045	2.6	190,992	199,333	4.4
Apr	59,378	64,914	9.3	250,370	264,247	5.5
May	57,240	66,785	16.7	307,610	331,032	7.6
Jun	57,012	66,249	16.2	364,622	397,281	9.0
Jul	60,520	58,094	-4.0	425,142	455,375	7.1
Aug	64,015	67,039	4.7	489,157	522,414	6.8
Sep	62,506	65,429	4.7	551,663	587,843	6.6
Oct	65,043	66,468	2.2	616,706	654,311	6.1
Nov	63,637			680,343		
Dec	63,411			743,754		

See footnote(s) at end of table.

--continued

**Dairy Products: Production by Product and Month,  
United States, 2004-2005 <sup>1</sup> (continued)**

Product and Month	By Month			Cumulative		
	2004	2005	Change From 2004	2004	2005	Change From 2004
	<i>1,000 Pounds</i>	<i>1,000 Pounds</i>	<i>Percent</i>	<i>1,000 Pounds</i>	<i>1,000 Pounds</i>	<i>Percent</i>
Butter						
Jan	129,346	128,653	-0.5	129,346	128,653	-0.5
Feb	108,593	113,492	4.5	237,939	242,145	1.8
Mar	100,383	122,135	21.7	338,322	364,280	7.7
Apr	100,324	115,659	15.3	438,646	479,939	9.4
May	110,120	119,508	8.5	548,766	599,447	9.2
Jun	99,156	106,360	7.3	647,922	705,807	8.9
Jul	92,615	95,310	2.9	740,537	801,117	8.2
Aug	90,329	91,603	1.4	830,866	892,720	7.4
Sep	94,242	100,095	6.2	925,108	992,815	7.3
Oct	104,386	107,506	3.0	1,029,494	1,100,321	6.9
Nov	101,376			1,130,870		
Dec	118,808			1,249,678		
Nonfat Dry Milk, Human						
Jan	129,320	93,775	-27.5	129,320	93,775	-27.5
Feb	115,769	94,334	-18.5	245,089	188,109	-23.2
Mar	117,981	109,049	-7.6	363,070	297,158	-18.2
Apr	134,011	111,223	-17.0	497,081	408,381	-17.8
May	151,291	124,105	-18.0	648,372	532,486	-17.9
Jun	144,095	124,642	-13.5	792,467	657,128	-17.1
Jul	134,566	110,667	-17.8	927,033	767,795	-17.2
Aug	113,617	86,870	-23.5	1,040,650	854,665	-17.9
Sep	93,936	71,053	-24.4	1,134,586	925,718	-18.4
Oct	94,814	73,745	-22.2	1,229,400	999,463	-18.7
Nov	83,789			1,313,189		
Dec	93,201			1,406,390		
Total Dry Whey <sup>3</sup>						
Jan	86,784	86,194	-0.7	86,784	86,194	-0.7
Feb	84,585	79,884	-5.6	171,369	166,078	-3.1
Mar	92,788	91,544	-1.3	264,157	257,622	-2.5
Apr	91,816	90,958	-0.9	355,973	348,580	-2.1
May	90,215	93,158	3.3	446,188	441,738	-1.0
Jun	86,681	89,588	3.4	532,869	531,326	-0.3
Jul	83,065	89,261	7.5	615,934	620,587	0.8
Aug	86,673	87,508	1.0	702,607	708,095	0.8
Sep	80,239	83,938	4.6	782,846	792,033	1.2
Oct	80,884	82,320	1.8	863,730	874,353	1.2
Nov	83,609			947,339		
Dec	87,559			1,034,898		

See footnote(s) at end of table.

--continued



**Dairy Products: Production by Product and Month,  
United States, 2004-2005 <sup>1</sup> (continued)**

Product and Month	By Month			Cumulative		
	2004	2005	Change From 2004	2004	2005	Change From 2004
	<i>1,000 Pounds</i>	<i>1,000 Pounds</i>	<i>Percent</i>	<i>1,000 Pounds</i>	<i>1,000 Pounds</i>	<i>Percent</i>
Cream Cottage Cheese						
Jan	32,541	29,496	-9.4	32,541	29,496	-9.4
Feb	30,439	27,939	-8.2	62,980	57,435	-8.8
Mar	34,783	32,532	-6.5	97,763	89,967	-8.0
Apr	31,113	30,437	-2.2	128,876	120,404	-6.6
May	30,406	31,454	3.4	159,282	151,858	-4.7
Jun	30,862	31,410	1.8	190,144	183,268	-3.6
Jul	32,752	31,935	-2.5	222,896	215,203	-3.5
Aug	33,029	33,971	2.9	255,925	249,174	-2.6
Sep	32,130	32,920	2.5	288,055	282,094	-2.1
Oct	30,838	30,462	-1.2	318,893	312,556	-2.0
Nov	30,298			349,191		
Dec	28,038			377,229		
Lowfat Cottage Cheese						
Jan	32,847	29,468	-10.3	32,847	29,468	-10.3
Feb	31,469	31,520	0.2	64,316	60,988	-5.2
Mar	36,032	33,230	-7.8	100,348	94,218	-6.1
Apr	32,158	32,589	1.3	132,506	126,807	-4.3
May	34,149	34,758	1.8	166,655	161,565	-3.1
Jun	34,236	33,889	-1.0	200,891	195,454	-2.7
Jul	32,462	31,966	-1.5	233,353	227,420	-2.5
Aug	33,972	36,362	7.0	267,325	263,782	-1.3
Sep	34,435	34,363	-0.2	301,760	298,145	-1.2
Oct	31,112	32,594	4.8	332,872	330,739	-0.6
Nov	30,599			363,471		
Dec	27,748			391,219		
	<i>1,000 Gallons</i>	<i>1,000 Gallons</i>	<i>Percent</i>	<i>1,000 Gallons</i>	<i>1,000 Gallons</i>	<i>Percent</i>
Ice Cream, Hard						
Jan	60,148	60,440	0.5	60,148	60,440	0.5
Feb	64,848	64,240	-0.9	124,996	124,680	-0.3
Mar	78,409	78,232	-0.2	203,405	202,912	-0.2
Apr	76,836	77,426	0.8	280,241	280,338	
May	74,378	79,510	6.9	354,619	359,848	1.5
Jun	85,245	90,806	6.5	439,864	450,654	2.5
Jul	77,886	87,648	12.5	517,750	538,302	4.0
Aug	73,697	89,329	21.2	591,447	627,631	6.1
Sep	70,776	72,571	2.5	662,223	700,202	5.7
Oct	68,134	69,053	1.3	730,357	769,255	5.3
Nov	59,116			789,473		
Dec	55,193			844,666		

See footnote(s) at end of table.

--continued

**Dairy Products: Production by Product and Month,  
United States, 2004-2005 <sup>1</sup> (continued)**

Product and Month	By Month			Cumulative		
	2004	2005	Change From 2004	2004	2005	Change From 2004
	<i>1,000 Gallons</i>	<i>1,000 Gallons</i>	<i>Percent</i>	<i>1,000 Gallons</i>	<i>1,000 Gallons</i>	<i>Percent</i>
<b>Ice Cream, Lowfat</b>						
Jan	26,381	27,079	2.6	26,381	27,079	2.6
Feb	28,440	28,083	-1.3	54,821	55,162	0.6
Mar	37,856	36,580	-3.4	92,677	91,742	-1.0
Apr	39,687	35,701	-10.0	132,364	127,443	-3.7
May	38,796	35,568	-8.3	171,160	163,011	-4.8
Jun	41,920	41,736	-0.4	213,080	204,747	-3.9
Jul	42,430	39,414	-7.1	255,510	244,161	-4.4
Aug	39,329	40,406	2.7	294,839	284,567	-3.5
Sep	34,495	32,540	-5.7	329,334	317,107	-3.7
Oct	31,233	29,492	-5.6	360,567	346,599	-3.9
Nov	27,363			387,930		
Dec	27,544			415,474		
<b>Ice Cream, NF, Hard</b>						
Jan	1,359	1,164	-14.3	1,359	1,164	-14.3
Feb	1,462	1,619	10.7	2,821	2,783	-1.3
Mar	1,669	1,670	0.1	4,490	4,453	-0.8
Apr	2,009	1,642	-18.3	6,499	6,095	-6.2
May	1,757	1,745	-0.7	8,256	7,840	-5.0
Jun	1,904	1,855	-2.6	10,160	9,695	-4.6
Jul	1,725	1,966	14.0	11,885	11,661	-1.9
Aug	1,708	1,800	5.4	13,593	13,461	-1.0
Sep	1,455	1,501	3.2	15,048	14,962	-0.6
Oct	1,630	1,397	-14.3	16,678	16,359	-1.9
Nov	1,118			17,796		
Dec	1,281			19,077		
<b>Sherbet, Hard</b>						
Jan	3,558	4,194	17.9	3,558	4,194	17.9
Feb	3,837	4,116	7.3	7,395	8,310	12.4
Mar	5,295	4,915	-7.2	12,690	13,225	4.2
Apr	4,665	5,047	8.2	17,355	18,272	5.3
May	4,714	5,022	6.5	22,069	23,294	5.6
Jun	5,602	5,710	1.9	27,671	29,004	4.8
Jul	4,700	5,408	15.1	32,371	34,412	6.3
Aug	4,690	5,685	21.2	37,061	40,097	8.2
Sep	4,214	4,938	17.2	41,275	45,035	9.1
Oct	3,638	3,904	7.3	44,913	48,939	9.0
Nov	3,434			48,347		
Dec	2,920			51,267		

See footnote(s) at end of table.

--continued

**Dairy Products: Production by Product and Month,  
United States, 2004-2005 (continued)**

Product and Month	By Month			Cumulative		
	2004	2005	Change From 2004	2004	2005	Change From 2004
	<i>1,000 Pounds</i>	<i>1,000 Pounds</i>	<i>Percent</i>	<i>1,000 Pounds</i>	<i>1,000 Pounds</i>	<i>Percent</i>
Sour Cream						
Jan	75,950	76,883	1.2	75,950	76,883	1.2
Feb	69,869	75,324	7.8	145,819	152,207	4.4
Mar	84,898	87,189	2.7	230,717	239,396	3.8
Apr	74,707	72,041	-3.6	305,424	311,437	2.0
May	75,132	85,130	13.3	380,556	396,567	4.2
Jun	80,905	83,642	3.4	461,461	480,209	4.1
Jul	76,850	77,890	1.4	538,311	558,099	3.7
Aug	82,337	92,610	12.5	620,648	650,709	4.8
Sep	77,726	79,014	1.7	698,374	729,723	4.5
Oct	83,612	87,104	4.2	781,986	816,827	4.5
Nov	104,098			886,084		
Dec	94,078			980,162		

See footnote(s) at end of table.

--continued

**Dairy Products: Production by Product and Month,  
United States, 2004-2005 (continued)**

Product and Month	By Month			Cumulative		
	2004	2005	Change From 2004	2004	2005	Change From 2004
	<i>1,000 Pounds</i>	<i>1,000 Pounds</i>	<i>Percent</i>	<i>1,000 Pounds</i>	<i>1,000 Pounds</i>	<i>Percent</i>
Yogurt						
Jan	217,302	223,206	2.7	217,302	223,206	2.7
Feb	216,153	237,598	9.9	433,455	460,804	6.3
Mar	247,890	265,285	7.0	681,345	726,089	6.6
Apr	226,545	251,984	11.2	907,890	978,073	7.7
May	242,139	262,207	8.3	1,150,029	1,240,280	7.8
Jun	241,514	252,992	4.8	1,391,543	1,493,272	7.3
Jul	212,831	227,077	6.7	1,604,374	1,720,349	7.2
Aug	230,018	250,022	8.7	1,834,392	1,970,371	7.4
Sep	243,742	262,708	7.8	2,078,134	2,233,079	7.5
Oct	223,663	237,433	6.2	2,301,797	2,470,512	7.3
Nov	193,091			2,494,888		
Dec	213,766			2,708,654		

See footnote(s) at end of table.

--continued

**Dairy Products: Production by Product and Month,  
United States, 2004-2005 <sup>1</sup> (continued)**

Product and Month	By Month			Cumulative		
	2004	2005	Change From 2004	2004	2005	Change From 2004
	<i>1,000 Gallons</i>	<i>1,000 Gallons</i>	<i>Percent</i>	<i>1,000 Gallons</i>	<i>1,000 Gallons</i>	<i>Percent</i>
Frozen Yogurt						
Jan	5,141	4,299	-16.4	5,141	4,299	-16.4
Feb	5,448	4,457	-18.2	10,589	8,756	-17.3
Mar	6,269	6,010	-4.1	16,858	14,766	-12.4
Apr	6,369	5,345	-16.1	23,227	20,111	-13.4
May	6,148	6,241	1.5	29,375	26,352	-10.3
Jun	6,580	6,064	-7.8	35,955	32,416	-9.8
Jul	5,704	5,600	-1.8	41,659	38,016	-8.7
Aug	6,137	5,938	-3.2	47,796	43,954	-8.0
Sep	5,753	5,149	-10.5	53,549	49,103	-8.3
Oct	5,270	4,648	-11.8	58,819	53,751	-8.6
Nov	4,705			63,524		
Dec	4,148			67,672		

<sup>1</sup> September 2005 data revised.

<sup>2</sup> Monthly 2004 data revised. January 2005 data revised.

<sup>3</sup> Excludes all modified dry whey products.

**Total Cheese, Excluding Cottage Cheese: Production by  
State and United States, October 2004-2005**

State	Oct 2004	Sep <sup>1</sup> 2005	Oct 2005	Change From	
				Oct 2004	Sep 2005
	<i>1,000 Pounds</i>	<i>1,000 Pounds</i>	<i>1,000 Pounds</i>	<i>Percent</i>	<i>Percent</i>
CA	166,976	174,291	176,019	5.4	1.0
ID	63,815				
IL	7,963	7,878	8,081	1.5	2.6
IA	12,976	12,239	12,275	-5.4	0.3
MA	73	52	58	-20.5	11.5
MN	51,069	48,614	51,721	1.3	6.4
MO	10,033				
NY	64,167	58,261	59,780	-6.8	2.6
OH	15,952	16,306	17,407	9.1	6.8
PA	29,319	32,136	32,347	10.3	0.7
SD	13,805	13,740	13,837	0.2	0.7
UT	5,226	5,784	5,871	12.3	1.5
WI	198,972	198,551	200,213	0.6	0.8
Oth Sts <sup>2</sup>	107,698	174,059	177,125	64.5	1.8
US	748,044	741,911	754,734	0.9	1.7
N Atlantic	108,853	106,085	105,845	-2.8	-0.2
S Atlantic	2,738	2,423	2,705	-1.2	11.6
E N Central	232,471	232,304	235,890	1.5	1.5
W N Central	91,410	79,669	83,624	-8.5	5.0
S Central	7,188	10,604	8,409	17.0	-20.7
West	305,384	310,826	318,261	4.2	2.4

<sup>1</sup> Revised.

<sup>2</sup> States not shown when fewer than 3 plants reported or individual plant operations could be disclosed. Percent change shown only when comparable States are included in the calculation.

**American Cheese: Production by State and United States, October 2004-2005**

State	Oct 2004	Sep <sup>1</sup> 2005	Oct 2005	Change From	
				Oct 2004	Sep 2005
	<i>1,000 Pounds</i>	<i>1,000 Pounds</i>	<i>1,000 Pounds</i>	<i>Percent</i>	<i>Percent</i>
CA	70,172	68,034	70,340	0.2	3.4
IA	10,176	9,425	9,393	-7.7	-0.3
MN	48,358	46,069	49,007	1.3	6.4
NY	5,609	5,094	4,803	-14.4	-5.7
OH	2,495	2,993	3,475	39.3	16.1
OR	9,706	9,855	9,983	2.9	1.3
WI	69,912	67,998	68,539	-2.0	0.8
Oth Sts <sup>2</sup>	92,756	92,269	94,558	1.9	2.5
US	309,184	301,737	310,098	0.3	2.8
Atlantic	11,873	9,699	10,503	-11.5	8.3
E N Central	73,597	71,783	72,979	-0.8	1.7
W N Central	65,705	62,815	65,776	0.1	4.7
S Central	3,950	3,839	2,790	-29.4	-27.3
West	154,059	153,601	158,050	2.6	2.9

<sup>1</sup> Revised.

<sup>2</sup> States not shown when fewer than 3 plants reported or individual plant operations could be disclosed. Percent change shown only when comparable States are included in the calculation.

**Cheddar Cheese: Production by State and United States, October 2004-2005**

State	Oct <sup>1</sup> 2004	Sep <sup>2</sup> 2005	Oct 2005	Change From	
				Oct 2004	Sep 2005
	<i>1,000 Pounds</i>	<i>1,000 Pounds</i>	<i>1,000 Pounds</i>	<i>Percent</i>	<i>Percent</i>
CA	43,791	41,423	41,662	-4.9	0.6
MN	44,311	41,209	45,154	1.9	9.6
NY	5,467	4,975	4,682	-14.4	-5.9
WI	54,309	52,782	54,117	-0.4	2.5
Oth Sts <sup>3</sup>	97,611	99,125	100,968	3.4	1.9
US	245,489	239,514	246,583	0.4	3.0
Atlantic	11,663	9,432	10,141	-13.0	7.5
E N Cen	56,373	54,701	56,252	-0.2	2.8
W N Cen	56,178	52,794	57,222	1.9	8.4
S Cen	3,949	3,838	2,789	-29.4	-27.3
West	117,326	118,749	120,179	2.4	1.2

<sup>1</sup> Revised 2004 Cheddar Cheese data released in the May 5, 2005 Dairy Products Report.

<sup>2</sup> Revised.

<sup>3</sup> States not shown when fewer than 3 plants reported or individual plant operations could be disclosed. Percent change shown only when comparable States are included in the calculation.

**Mozzarella Cheese: Production by State and United States, October 2004-2005**

State	Oct 2004	Sep <sup>1</sup> 2005	Oct 2005	Change From	
				Oct 2004	Sep 2005
	<i>1,000 Pounds</i>	<i>1,000 Pounds</i>	<i>1,000 Pounds</i>	<i>Percent</i>	<i>Percent</i>
CA	73,901	79,801	81,933	10.9	2.7
NY	14,141	14,790	14,214	0.5	-3.9
PA	14,532	15,797	15,714	8.1	-0.5
WI	66,554	68,060	66,100	-0.7	-2.9
Oth Sts <sup>2</sup>	66,810	63,563	64,518	-3.4	1.5
US	235,938	242,011	242,479	2.8	0.2
Atlantic <sup>3</sup>	35,307	38,659	35,236	-0.2	-8.9
E N Central	75,125	76,692	75,183	0.1	-2.0
West	116,424	118,567	123,328	5.9	4.0

<sup>1</sup> Revised.

<sup>2</sup> States not shown when fewer than 3 plants reported or individual plant operations could be disclosed. Percent change shown only when comparable States are included in the calculation.

<sup>3</sup> Region totals may not add to U.S. when compiled regions could not be disclosed.

**Butter: Production by State and United States, October 2004-2005**

State	Oct 2004	Sep <sup>1</sup> 2005	Oct 2005	Change From	
				Oct 2004	Sep 2005
	<i>1,000 Pounds</i>	<i>1,000 Pounds</i>	<i>1,000 Pounds</i>	<i>Percent</i>	<i>Percent</i>
CA	36,241	35,295	36,212	-0.1	2.6
NY	1,376	1,205	1,386	0.7	15.0
PA	4,678	5,651	5,700	21.8	0.9
WI	28,857	25,989	29,700	2.9	14.3
Oth Sts <sup>2</sup>	33,234	31,955	34,508	3.8	8.0
US	104,386	100,095	107,506	3.0	7.4
N Atlantic <sup>3</sup>	7,644	8,419	9,625	25.9	14.3
E N Central	30,123	27,594	31,659	5.1	14.7
W N Central	8,070	4,891	5,323	-34.0	8.8
West	48,085	50,936	52,008	8.2	2.1

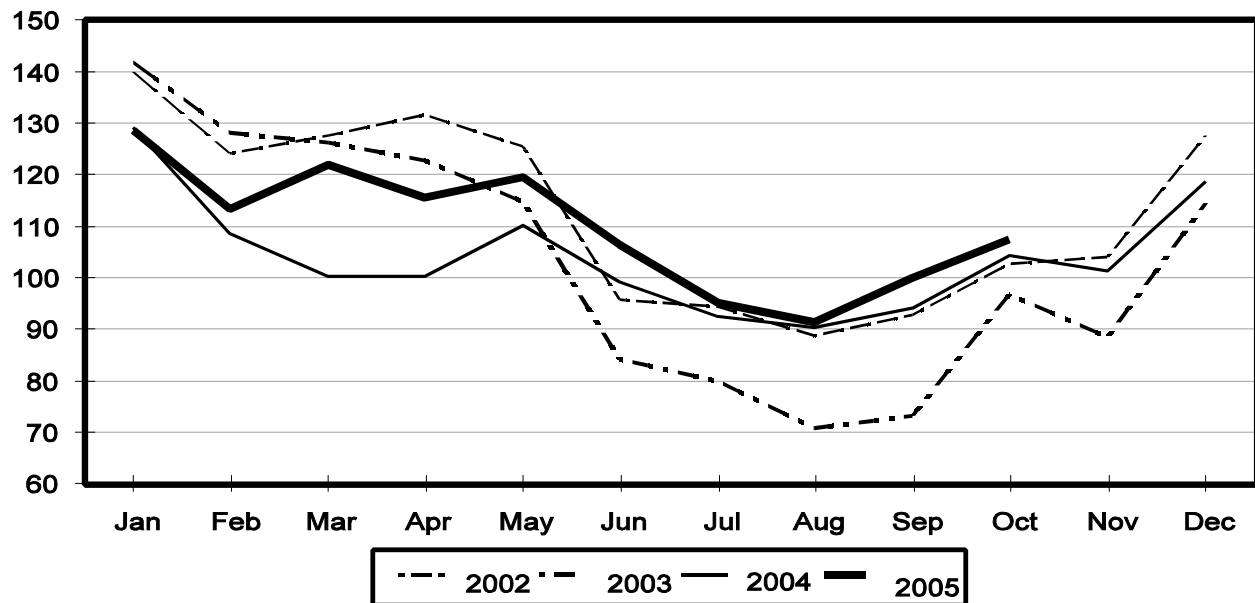
<sup>1</sup> Revised.

<sup>2</sup> States not shown when fewer than 3 plants reported or individual plant operations could be disclosed. Percent change shown only when comparable States are included in the calculation.

<sup>3</sup> Region totals may not add to U.S. when compiled regions could not be disclosed.

## Total Butter Production United States

Million Pounds





**Nonfat Dry Milk, Human: Production by State  
and United States, October 2004-2005**

State	Oct 2004	Sep <sup>1</sup> 2005	Oct 2005	Change From	
				Oct 2004	Sep 2005
	<i>1,000 Pounds</i>	<i>1,000 Pounds</i>	<i>1,000 Pounds</i>	<i>Percent</i>	<i>Percent</i>
CA	65,116	35,010	40,491	-37.8	15.7
PA	1,189	4,273	3,669	208.6	-14.1
Oth Sts <sup>2</sup>	28,509	31,770	29,585	3.8	-6.9
US	94,814	71,053	73,745	-22.2	3.8
Atlantic	4,015	7,088	8,256	105.6	16.5
E N Central	1,152	3,067	2,601	125.8	-15.2
W N Central	2,747	2,454	2,634	-4.1	7.3
S Central	2,172	4,321	1,731	-20.3	-59.9
West	84,728	54,123	58,523	-30.9	8.1

<sup>1</sup> Revised.

<sup>2</sup> States not shown when fewer than 3 plants reported or individual plant operations could be disclosed. Percent change shown only when comparable States are included in the calculation.

**Dry Whey, Human: Production by State  
and United States, October 2004-2005**

State	Oct 2004	Sep <sup>1</sup> 2005	Oct 2005	Change From	
				Oct 2004	Sep 2005
	<i>1,000 Pounds</i>	<i>1,000 Pounds</i>	<i>1,000 Pounds</i>	<i>Percent</i>	<i>Percent</i>
CA	9,442	10,141	10,400	10.1	2.6
MN		3,729	3,872		3.8
NY	9,092	10,482	10,065	10.7	-4.0
PA	6,233	7,345	7,229	16.0	-1.6
UT	2,071	1,980	1,975	-4.6	-0.3
WI	24,700	23,532	21,793	-11.8	-7.4
Oth Sts <sup>2</sup>	23,637	20,053	20,531	-13.1	2.4
US	75,175	77,262	75,865	0.9	-1.8
Atlantic	15,325	17,827	17,294	12.8	-3.0
Central	36,551	35,170	33,800	-7.5	-3.9
West	23,299	24,265	24,771	6.3	2.1

<sup>1</sup> Revised.

<sup>2</sup> States not shown when fewer than 3 plants reported or individual plant operations could be disclosed. Percent change shown only when comparable States are included in the calculation.

**Ice Cream, Hard: Production by State and United States, October 2004-2005**

State	Oct 2004	Sep <sup>1</sup> 2005	Oct 2005	Change From	
				Oct 2004	Sep 2005
	<i>1,000 Gallons</i>	<i>1,000 Gallons</i>	<i>1,000 Gallons</i>	<i>Percent</i>	<i>Percent</i>
CA	8,922	12,675	9,810	10.0	-22.6
FL	1,854	1,720	1,700	-8.3	-1.2
IL	2,764	3,103	2,899	4.9	-6.6
IN	7,386	7,527	7,820	5.9	3.9
MD	1,560	1,395	1,242	-20.4	-11.0
MA	5,616	3,844	4,707	-16.2	22.5
MI	1,349	1,518	1,440	6.7	-5.1
MN	3,212	3,857	3,041	-5.3	-21.2
MO	2,098	1,793	2,202	5.0	22.8
NY	1,990	2,157	1,873	-5.9	-13.2
NC	1,042	1,237	1,327	27.4	7.3
OH	1,810	2,070	1,718	-5.1	-17.0
OR	997	1,060	964	-3.3	-9.1
PA	3,879	2,985	3,214	-17.1	7.7
TN	1,224	1,285	1,311	7.1	2.0
TX	3,113	4,236	4,619	48.4	9.0
UT	1,730	2,268	1,912	10.5	-15.7
Oth Sts <sup>2</sup>	17,588	17,841	17,254	-1.9	-3.3
US	68,134	72,571	69,053	1.3	-4.8
N Atlantic	13,999	13,025	13,120	-6.3	0.7
S Atlantic	5,554	5,515	5,618	1.2	1.9
E N Central	13,942	14,974	14,650	5.1	-2.2
W N Central	12,065	10,882	10,941	-9.3	0.5
S Central	7,689	9,167	9,552	24.2	4.2
West	14,885	19,008	15,172	1.9	-20.2

<sup>1</sup> Revised.

<sup>2</sup> States not shown when fewer than 3 plants reported or individual plant operations could be disclosed. Percent change shown only when comparable States are included in the calculation.

**Canned Milk and Dry Milk Products: Manufacturers' Shipments,  
and Stocks, October, 2004-2005**

Product	Oct 2004	Sep 2005 <sup>1</sup>	Oct 2005	Change From	
				Oct 2004	Sep 2005
	<b>Manufacturers' Shipments<sup>2</sup></b>				
	<i>1,000 Pounds</i>	<i>1,000 Pounds</i>	<i>1,000 Pounds</i>	<i>Percent</i>	<i>Percent</i>
Nonfat Dry Milk, Human	95,670	80,169	67,007	-30.0	-16.4
	<b>Manufacturers' Stocks End-of-Month<sup>3</sup></b>				
	<i>1,000 Pounds</i>	<i>1,000 Pounds</i>	<i>1,000 Pounds</i>	<i>Percent</i>	<i>Percent</i>
Canned Evaporated and Condensed Whole Milk	54,331	66,886	67,565	24.4	1.0
Nonfat Dry Milk, Human	115,844	95,208	92,046	-20.5	-3.3
Dry Buttermilk, Total	7,284	7,892	9,324	28.0	18.1

<sup>1</sup> Revised.

<sup>2</sup> For dry products, shipments of bulk goods only.

<sup>3</sup> Stocks held by manufacturers at all points and in transit.

**Procedures and Reliability:** Estimates included in this report are based on data provided each month by manufacturers of these products. In 32 States, the State Departments of Agriculture assist in collection of data, which eliminates duplicate reporting and reduces respondent burden. Data are collected by mail, personal and telephone interviews following the close of each month. There were 1,096 manufacturers that made one or more products in 2004. Each month, reports are generally received from all dairy plants in States with small numbers of plants. In States with large numbers of plants, survey procedures are designed to obtain monthly reports from all large plants and from a sample of small plants. Monthly estimates are based upon returns from about 70 percent of the plants which account for 70 to 90 percent of the total production of major dairy products.

**Revision Policy:** Monthly estimates are subject to revision the month following the preliminary estimates. Annual estimates are published in the "**Dairy Products**" report published each April which includes any revisions made to current and previous year. An attempt is made to get information from all plants for preparing these estimates

## ACCESS TO REPORTS!!

---

For your convenience, there are several ways to obtain NASS reports, data products, and services:

### INTERNET ACCESS

All NASS reports are available free of charge on the worldwide Internet. For access, connect to the Internet and go to the NASS Home Page at: [www.usda.gov/nass/](http://www.usda.gov/nass/). Select "Today's Reports" or Publications and then Reports Calendar or Publications and then Search, by Title or Subject.

### E-MAIL SUBSCRIPTION

All NASS reports are available by subscription free of charge direct to your e-mail address. Starting with the NASS Home Page at [www.usda.gov/nass/](http://www.usda.gov/nass/), click on **Publications**, then click on the **Subscribe by E-mail** button which takes you to the page describing e-mail delivery of reports. Finally, click on **Go to the Subscription Page** and follow the instructions.

-----

### PRINTED REPORTS OR DATA PRODUCTS

**CALL OUR TOLL-FREE ORDER DESK: 800-999-6779 (U.S. and Canada)**  
**Other areas, please call 703-605-6220      FAX: 703-605-6900**  
**(Visa, MasterCard, check, or money order acceptable for payment.)**

-----

### ASSISTANCE

For **assistance** with general agricultural statistics or further information about NASS or its products or services, contact the **Agricultural Statistics Hotline** at **800-727-9540**, 7:30 a.m. to 4:00 p.m. ET, or e-mail: [nass@nass.usda.gov](mailto:nass@nass.usda.gov).

The U.S. Department of Agriculture (USDA) prohibits discrimination in all its programs and activities on the basis of race, color, national origin, age, disability, and where applicable, sex, marital status, familial status, parental status, religion, sexual orientation, genetic information, political beliefs, reprisal, or because all or part of an individual's income is derived from any public assistance program. (Not all prohibited bases apply to all programs.) Persons with disabilities who require alternative means for communication of program information (Braille, large print, audiotape, etc.) should contact USDA's TARGET Center at (202) 720-2600 (voice and TDD).

To file a complaint of discrimination, write to USDA, Director, Office of Civil Rights, 1400 Independence Avenue, S.W., Washington, D.C. 20250-9410, or call (800) 795-3272 (voice) or (202) 720-6382 (TDD). USDA is an equal opportunity provider and employer.