



NASS

FACT FINDERS FOR AGRICULTURE
UNITED STATES DEPARTMENT OF AGRICULTURE

Washington, D.C.

Dairy Products

Released January 5, 2006, by the National Agricultural Statistics Service (NASS), Agricultural Statistics Board, U.S. Department of Agriculture. For information on *Dairy Products* call Shawn Clark at (202) 690-3236, office hours 7:30 a.m. to 4:00 p.m. ET.

November 2005 Highlights

Total cheese output (excluding cottage cheese) was 761 million pounds, 0.9 percent above November 2004 and 0.4 percent above October 2005.

American type cheese production totaled 312 million pounds, 3.2 percent above November 2004 and 0.2 percent above October 2005.

Butter production was 110 million pounds, 8.6 percent above November 2004 and 2.7 percent above October 2005.

Frozen dessert: (comparisons with November 2004)

Ice cream, Regular (hard) --- 61.8 million gallons, up 4.6 percent.

Ice cream, Lowfat (total) --- 26.5 million gallons, down 3.1 percent.

Ice cream, Nonfat (hard) --- 1.17 million gallons, up 4.7 percent.

Sherbet (hard) --- 3.42 million gallons, down slightly.

Frozen Yogurt (total) --- 4.22 million gallons, down 10.4 percent.

Nonfat dry milk for human food: (compared with November 2004) --- 89.2 million pounds, up 6.4 percent.

Dry whey products: (comparisons with November 2004)

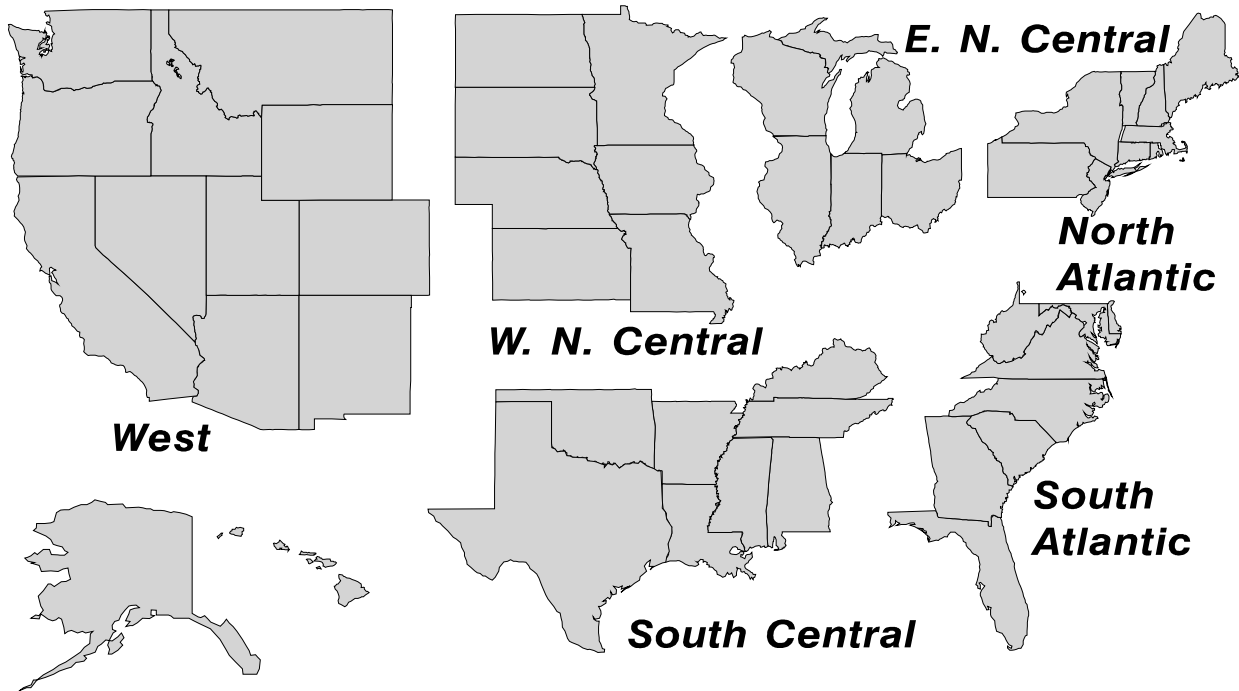
Dry whey, human --- 81.1 million pounds, up 5.0 percent.

Dry whey, animal --- 5.14 million pounds, down 19.6 percent.

Dry whey, total --- 86.2 million pounds, up 3.1 percent.

U. S. Geographic Regions Dairy Products

State totals are not published when fewer than 3 firms have reported or one firm comprises more than 60 percent of the State total. If we are not able to publish a region for confidentiality reasons, it will be combined with other regions when possible. For example, if North Atlantic can not be published, then it will be combined with South Atlantic to publish Atlantic. The West North Central and East North Central will be combined, if necessary, to form North Central. In the event that neither could be published, they may be combined with South Central to publish Central. Some tables will have only limited regions shown, therefore the regions may not add to the United States total.



Contents

Page

Dairy Products: Production by Product, United States, November, 2004-2005 1

Whey and Modified Whey Products: Production, Stocks, and Prices,
United States, November, 2004-2005 2

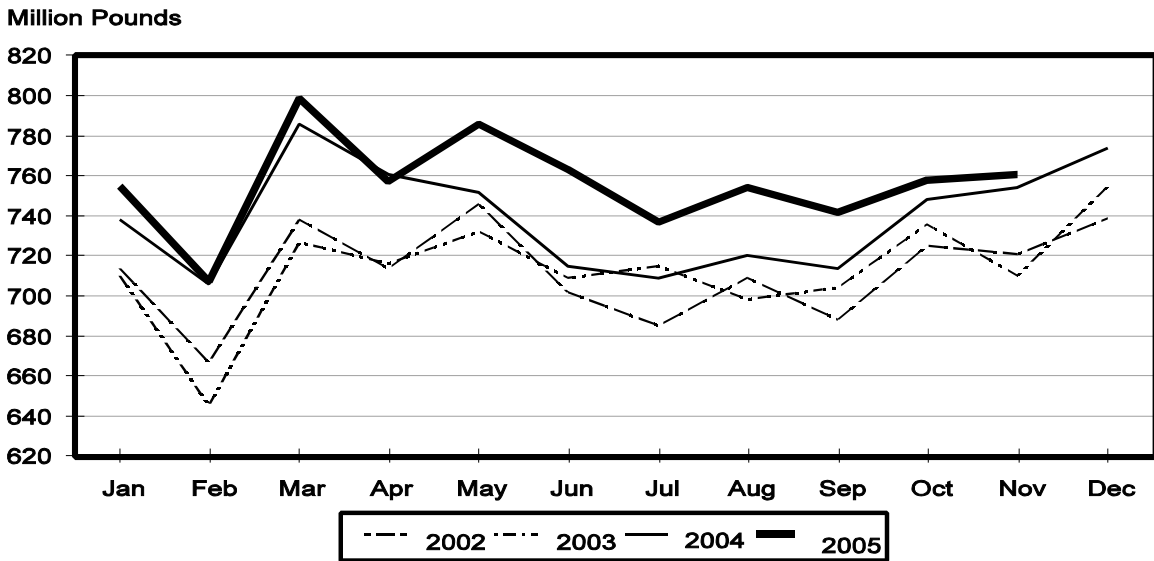
Dairy Products: Production by Product and Month, United States, 2004-2005 3

Select Commodities by State and United States, November, 2004-2005 10

Canned Milk and Dry Milk Products: Manufacturer’s Shipments, Stocks, and Selling Prices,
November, 2004-2005 15

Procedures and Reliability 16

Total Cheese Production United States



**Dairy Products: Production by Product,
United States, November, 2004-2005**

Product	Nov 2004	Oct 2005 ¹	Nov 2005	Change From	
				Nov 2004	Oct 2005
	<i>1,000 Pounds</i>	<i>1,000 Pounds</i>	<i>1,000 Pounds</i>	<i>Percent</i>	<i>Percent</i>
Butter	101,376	107,237	110,144	8.6	2.7
Cheese					
American Types ²	302,611	311,497	312,178	3.2	0.2
Cheddar ³	242,353	248,285	247,971	2.3	-0.1
Swiss	22,517	24,706	24,874	10.5	0.7
Brick and Muenster	6,989	6,577	6,379	-8.7	-3.0
Cream and Neufchatel	71,594	67,401	64,890	-9.4	-3.7
Hispanic	12,690	14,680	14,078	10.9	-4.1
Mozzarella	249,669	243,027	251,798	0.9	3.6
Other Italian Types	63,637	67,742	66,022	3.7	-2.5
Total Italian Types	313,306	310,769	317,820	1.4	2.3
All Other Types	24,638	22,619	21,267	-13.7	-6.0
Total	754,345	758,249	761,486	0.9	0.4
Cottage Cheese, Curd ⁴	36,753	38,126	37,308	1.5	-2.1
Cottage Cheese, Cream ⁵	30,298	30,632	29,091	-4.0	-5.0
Cottage Cheese, Lowfat ⁶	30,599	33,202	31,662	3.5	-4.6
Canned Evaporated and Condensed Whole Milk	45,077	40,409	39,238	-13.0	-2.9
Dry Whole Milk	4,285	2,318	2,043	-52.3	-11.9
Nonfat Dry Milk, Human	83,789	73,707	89,186	6.4	21.0
Dry Skim Milk, Animal	565	415	335	-40.7	-19.3
Dry Buttermilk	3,707	4,315	4,433	19.6	2.7
Sour Cream	104,098	89,357	107,207	3.0	20.0
Yogurt, Plain & Flavored	193,091	236,843	207,642	7.5	-12.3
	<i>1,000 Gallons</i>	<i>1,000 Gallons</i>	<i>1,000 Gallons</i>	<i>Percent</i>	<i>Percent</i>
Frozen Products					
Ice Cream, Hard	59,116	68,674	61,809	4.6	-10.0
Ice Cream, Lowfat, Hard	7,902	9,117	8,066	2.1	-11.5
Ice Cream, Lowfat, Soft	19,461	20,531	18,457	-5.2	-10.1
Ice Cream, Lowfat, Total	27,363	29,648	26,523	-3.1	-10.5
Ice Cream, Nonfat, Hard	1,118	1,471	1,170	4.7	-20.5
Sherbet, Hard	3,434	4,305	3,422	-0.3	-20.5
Water and Juice Ices	3,112	4,146	3,402	9.3	-17.9
Frozen Yogurt, Total	4,705	4,690	4,218	-10.4	-10.1
Regular & Lowfat, Hard	1,497	1,356	1,181	-21.1	-12.9
Nonfat, Hard	807	900	636	-21.2	-29.3
Other Frozen Dairy Products	500	467	409	-18.2	-12.4
Mix for Frozen Products					
Ice Cream Mix	33,245	36,330	34,176	2.8	-5.9
Ice Cream, Lowfat, Mix	14,889	16,398	14,673	-1.5	-10.5
Ice Cream, Nonfat, Mix	816	1,069	837	2.6	-21.7
Sherbet Mix	2,591	2,780	2,465	-4.9	-11.3
Yogurt Mix	2,687	2,759	2,481	-7.7	-10.1

¹ Revised.

² Includes Cheddar, Colby, Monterey, and Jack.

³ Revised 2004 Cheddar Cheese data released in the May 5, 2005 Dairy Products Report.

⁴ Mostly used for processing into cream or lowfat cottage cheese.

⁵ Fat content 4 percent or more.

⁶ Fat content less than 4 percent.

**Whey and Modified Whey Products: Production, Stocks,
and Prices, United States, November, 2004-2005**

Product	Nov 2004	Oct 2005 ¹	Nov 2005	Change From	
				Nov 2004	Oct 2005
Production					
	<i>1,000 Pounds</i>	<i>1,000 Pounds</i>	<i>1,000 Pounds</i>	<i>Percent</i>	<i>Percent</i>
Condensed Whey, Solids Content ²					
Sweet-Type, Human	7,051	5,497	7,065	0.2	28.5
Dry Whey Products					
Dry Whey, Human	77,218	75,776	81,051	5.0	7.0
Dry Whey, Animal	6,391	6,363	5,136	-19.6	-19.3
Dry Whey, Total	83,609	82,139	86,187	3.1	4.9
Reduced Lactose and Minerals					
Human Food	2,453	2,687	3,364	37.1	25.2
Animal Feed	3,702	3,904	4,109	11.0	5.3
Lactose, Human and Animal	55,426	50,735	56,740	2.4	11.8
Whey					
Protein Concentrate					
Human ³	24,744	27,702	27,677	11.9	-0.1
Animal ³	4,779	4,044	4,154	-13.1	2.7
Total ³	29,523	31,746	31,831	7.8	0.3
25.0-49.9 Percent ⁴	22,499	22,837	23,380	3.9	2.4
50.0-89.9 Percent ⁴	7,024	8,909	8,451	20.3	-5.1
Protein Isolates ⁵	2,273	2,485	2,359	3.8	-5.1
Manufacturers' Stocks End-of-Month ⁶					
	<i>1,000 Pounds</i>	<i>1,000 Pounds</i>	<i>1,000 Pounds</i>	<i>Percent</i>	<i>Percent</i>
Dry Whey Products					
Dry Whey, Human	36,032	32,939	33,806	-6.2	2.6
Dry Whey, Animal	4,749	3,939	3,761	-20.8	-4.5
Dry Whey, Total	40,781	36,878	37,567	-7.9	1.9
Reduced Lactose and Minerals					
Human and Animal ⁷	5,567	3,393	3,848	-30.9	13.4
Lactose, Human and Animal	71,761	50,503	51,280	-28.5	1.5
Whey					
Protein Concentrate					
Human ³	25,577	23,519	24,438	-4.5	3.9
Animal ³	3,860	2,482	2,575	-33.3	3.7
Total ³	29,437	26,001	27,013	-8.2	3.9
25.0-49.9 Percent ⁴	19,809	16,480	17,023	-14.1	3.3
50.0-89.9 Percent ⁴	9,628	9,521	9,990	3.8	4.9
Manufacturers' Selling Price ⁸					
	<i>Cents per Pound</i>	<i>Cents per Pound</i>	<i>Cents per Pound</i>	<i>Cents Change</i>	<i>Cents Change</i>
Dry Whey, Animal	21.2	27.9	29.1	7.9	1.2

¹ Revised.

² Final marketable product only. Does not include quantity used or shipped to another plant for further processing into dry whey or modified whey products. Does not include sweet-type, animal whey.

³ Whey Protein Concentrate, 25.0 to 89.9 percent.

⁴ Whey Protein Concentrate, Human and Animal.

⁵ Whey Protein Isolate, 90.0 percent or greater.

⁶ Stocks held by manufacturers at all points and in transit.

⁷ Reduced lactose and minerals stocks combined to avoid disclosure of individual operations.

⁸ Prices for bulk goods, f.o.b. plant. Average monthly prices reported by firms.

**Dairy Products: Production by Product and Month,
United States, 2004-2005 ¹**

Product and Month	By Month			Cumulative		
	2004	2005	Change From 2004	2004	2005	Change From 2004
	<i>1,000 Pounds</i>	<i>1,000 Pounds</i>	<i>Percent</i>	<i>1,000 Pounds</i>	<i>1,000 Pounds</i>	<i>Percent</i>
Total Cheese						
Jan	737,997	754,684	2.3	737,997	754,684	2.3
Feb	705,525	707,365	0.3	1,443,522	1,462,049	1.3
Mar	785,626	799,304	1.7	2,229,148	2,261,353	1.4
Apr	761,046	756,908	-0.5	2,990,194	3,018,261	0.9
May	752,051	785,539	4.5	3,742,245	3,803,800	1.6
Jun	715,332	762,689	6.6	4,457,577	4,566,489	2.4
Jul	708,739	737,713	4.1	5,166,316	5,304,202	2.7
Aug	719,538	754,063	4.8	5,885,854	6,058,265	2.9
Sep	714,357	741,911	3.9	6,600,211	6,800,176	3.0
Oct	748,044	758,249	1.4	7,348,255	7,558,425	2.9
Nov	754,345	761,486	0.9	8,102,600	8,319,911	2.7
Dec	773,863			8,876,463		
American Cheese						
Jan	318,986	322,188	1.0	318,986	322,188	1.0
Feb	295,990	293,137	-1.0	614,976	615,325	0.1
Mar	324,234	331,544	2.3	939,210	946,869	0.8
Apr	325,061	328,413	1.0	1,264,271	1,275,282	0.9
May	332,481	332,821	0.1	1,596,752	1,608,103	0.7
Jun	308,517	321,604	4.2	1,905,269	1,929,707	1.3
Jul	302,724	317,037	4.7	2,207,993	2,246,744	1.8
Aug	300,384	311,809	3.8	2,508,377	2,558,553	2.0
Sep	294,368	301,737	2.5	2,802,745	2,860,290	2.1
Oct	309,184	311,497	0.7	3,111,929	3,171,787	1.9
Nov	302,611	312,178	3.2	3,414,540	3,483,965	2.0
Dec	324,236			3,738,776		
Cheddar Cheese ²						
Jan	259,327	261,049	0.7	259,327	261,049	0.7
Feb	237,293	237,535	0.1	496,620	498,584	0.4
Mar	260,336	268,495	3.1	756,956	767,079	1.3
Apr	264,068	263,046	-0.4	1,021,024	1,030,125	0.9
May	272,736	266,543	-2.3	1,293,760	1,296,668	0.2
Jun	249,420	258,215	3.5	1,543,180	1,554,883	0.8
Jul	242,075	253,813	4.8	1,785,255	1,808,696	1.3
Aug	237,758	244,731	2.9	2,023,013	2,053,427	1.5
Sep	234,648	239,514	2.1	2,257,661	2,292,941	1.6
Oct	245,489	248,285	1.1	2,503,150	2,541,226	1.5
Nov	242,353	247,971	2.3	2,745,503	2,789,197	1.6
Dec	258,924			3,004,427		

See footnote(s) at end of table.

--continued

**Dairy Products: Production by Product and Month,
United States, 2004-2005 ¹ (continued)**

Product and Month	By Month			Cumulative		
	2004	2005	Change From 2004	2004	2005	Change From 2004
	<i>1,000 Pounds</i>	<i>1,000 Pounds</i>	<i>Percent</i>	<i>1,000 Pounds</i>	<i>1,000 Pounds</i>	<i>Percent</i>
Italian Cheese						
Jan	310,574	317,189	2.1	310,574	317,189	2.1
Feb	300,625	301,788	0.4	611,199	618,977	1.3
Mar	334,041	340,532	1.9	945,240	959,509	1.5
Apr	310,075	313,394	1.1	1,255,315	1,272,903	1.4
May	304,228	329,268	8.2	1,559,543	1,602,171	2.7
Jun	291,946	320,911	9.9	1,851,489	1,923,082	3.9
Jul	288,740	300,971	4.2	2,140,229	2,224,053	3.9
Aug	296,512	310,591	4.7	2,436,741	2,534,644	4.0
Sep	287,570	307,440	6.9	2,724,311	2,842,084	4.3
Oct	300,981	310,769	3.3	3,025,292	3,152,853	4.2
Nov	313,306	317,820	1.4	3,338,598	3,470,673	4.0
Dec	321,692			3,660,290		
Mozzarella						
Jan	248,207	251,399	1.3	248,207	251,399	1.3
Feb	241,259	239,290	-0.8	489,466	490,689	0.2
Mar	264,782	269,487	1.8	754,248	760,176	0.8
Apr	250,697	248,480	-0.9	1,004,945	1,008,656	0.4
May	246,988	262,483	6.3	1,251,933	1,271,139	1.5
Jun	234,934	254,662	8.4	1,486,867	1,525,801	2.6
Jul	228,220	242,877	6.4	1,715,087	1,768,678	3.1
Aug	232,497	243,552	4.8	1,947,584	2,012,230	3.3
Sep	225,064	242,011	7.5	2,172,648	2,254,241	3.8
Oct	235,938	243,027	3.0	2,408,586	2,497,268	3.7
Nov	249,669	251,798	0.9	2,658,255	2,749,066	3.4
Dec	258,281			2,916,536		
Other Italian						
Jan	62,367	65,790	5.5	62,367	65,790	5.5
Feb	59,366	62,498	5.3	121,733	128,288	5.4
Mar	69,259	71,045	2.6	190,992	199,333	4.4
Apr	59,378	64,914	9.3	250,370	264,247	5.5
May	57,240	66,785	16.7	307,610	331,032	7.6
Jun	57,012	66,249	16.2	364,622	397,281	9.0
Jul	60,520	58,094	-4.0	425,142	455,375	7.1
Aug	64,015	67,039	4.7	489,157	522,414	6.8
Sep	62,506	65,429	4.7	551,663	587,843	6.6
Oct	65,043	67,742	4.1	616,706	655,585	6.3
Nov	63,637	66,022	3.7	680,343	721,607	6.1
Dec	63,411			743,754		

See footnote(s) at end of table.

--continued

**Dairy Products: Production by Product and Month,
United States, 2004-2005 ¹ (continued)**

Product and Month	By Month			Cumulative		
	2004	2005	Change From 2004	2004	2005	Change From 2004
	<i>1,000 Pounds</i>	<i>1,000 Pounds</i>	<i>Percent</i>	<i>1,000 Pounds</i>	<i>1,000 Pounds</i>	<i>Percent</i>
Butter						
Jan	129,346	128,653	-0.5	129,346	128,653	-0.5
Feb	108,593	113,492	4.5	237,939	242,145	1.8
Mar	100,383	122,135	21.7	338,322	364,280	7.7
Apr	100,324	115,659	15.3	438,646	479,939	9.4
May	110,120	119,508	8.5	548,766	599,447	9.2
Jun	99,156	106,360	7.3	647,922	705,807	8.9
Jul	92,615	95,310	2.9	740,537	801,117	8.2
Aug	90,329	91,603	1.4	830,866	892,720	7.4
Sep	94,242	100,095	6.2	925,108	992,815	7.3
Oct	104,386	107,237	2.7	1,029,494	1,100,052	6.9
Nov	101,376	110,144	8.6	1,130,870	1,210,196	7.0
Dec	118,808			1,249,678		
Nonfat Dry Milk, Human						
Jan	129,320	93,775	-27.5	129,320	93,775	-27.5
Feb	115,769	94,334	-18.5	245,089	188,109	-23.2
Mar	117,981	109,049	-7.6	363,070	297,158	-18.2
Apr	134,011	111,223	-17.0	497,081	408,381	-17.8
May	151,291	124,105	-18.0	648,372	532,486	-17.9
Jun	144,095	124,642	-13.5	792,467	657,128	-17.1
Jul	134,566	110,667	-17.8	927,033	767,795	-17.2
Aug	113,617	86,870	-23.5	1,040,650	854,665	-17.9
Sep	93,936	71,053	-24.4	1,134,586	925,718	-18.4
Oct	94,814	73,707	-22.3	1,229,400	999,425	-18.7
Nov	83,789	89,186	6.4	1,313,189	1,088,611	-17.1
Dec	93,201			1,406,390		
Total Dry Whey ³						
Jan	86,784	86,194	-0.7	86,784	86,194	-0.7
Feb	84,585	79,884	-5.6	171,369	166,078	-3.1
Mar	92,788	91,544	-1.3	264,157	257,622	-2.5
Apr	91,816	90,958	-0.9	355,973	348,580	-2.1
May	90,215	93,158	3.3	446,188	441,738	-1.0
Jun	86,681	89,588	3.4	532,869	531,326	-0.3
Jul	83,065	89,261	7.5	615,934	620,587	0.8
Aug	86,673	87,508	1.0	702,607	708,095	0.8
Sep	80,239	83,938	4.6	782,846	792,033	1.2
Oct	80,884	82,139	1.6	863,730	874,172	1.2
Nov	83,609	86,187	3.1	947,339	960,359	1.4
Dec	87,559			1,034,898		

See footnote(s) at end of table.

--continued

**Dairy Products: Production by Product and Month,
United States, 2004-2005 ¹ (continued)**

Product and Month	By Month			Cumulative		
	2004	2005	Change From 2004	2004	2005	Change From 2004
	<i>1,000 Pounds</i>	<i>1,000 Pounds</i>	<i>Percent</i>	<i>1,000 Pounds</i>	<i>1,000 Pounds</i>	<i>Percent</i>
Cream Cottage Cheese						
Jan	32,541	29,496	-9.4	32,541	29,496	-9.4
Feb	30,439	27,939	-8.2	62,980	57,435	-8.8
Mar	34,783	32,532	-6.5	97,763	89,967	-8.0
Apr	31,113	30,437	-2.2	128,876	120,404	-6.6
May	30,406	31,454	3.4	159,282	151,858	-4.7
Jun	30,862	31,410	1.8	190,144	183,268	-3.6
Jul	32,752	31,935	-2.5	222,896	215,203	-3.5
Aug	33,029	33,971	2.9	255,925	249,174	-2.6
Sep	32,130	32,920	2.5	288,055	282,094	-2.1
Oct	30,838	30,632	-0.7	318,893	312,726	-1.9
Nov	30,298	29,091	-4.0	349,191	341,817	-2.1
Dec	28,038			377,229		
Lowfat Cottage Cheese						
Jan	32,847	29,468	-10.3	32,847	29,468	-10.3
Feb	31,469	31,520	0.2	64,316	60,988	-5.2
Mar	36,032	33,230	-7.8	100,348	94,218	-6.1
Apr	32,158	32,589	1.3	132,506	126,807	-4.3
May	34,149	34,758	1.8	166,655	161,565	-3.1
Jun	34,236	33,889	-1.0	200,891	195,454	-2.7
Jul	32,462	31,966	-1.5	233,353	227,420	-2.5
Aug	33,972	36,362	7.0	267,325	263,782	-1.3
Sep	34,435	34,363	-0.2	301,760	298,145	-1.2
Oct	31,112	33,202	6.7	332,872	331,347	-0.5
Nov	30,599	31,662	3.5	363,471	363,009	-0.1
Dec	27,748			391,219		
	<i>1,000 Gallons</i>	<i>1,000 Gallons</i>	<i>Percent</i>	<i>1,000 Gallons</i>	<i>1,000 Gallons</i>	<i>Percent</i>
Ice Cream, Hard						
Jan	60,148	60,440	0.5	60,148	60,440	0.5
Feb	64,848	64,240	-0.9	124,996	124,680	-0.3
Mar	78,409	78,232	-0.2	203,405	202,912	-0.2
Apr	76,836	77,426	0.8	280,241	280,338	
May	74,378	79,510	6.9	354,619	359,848	1.5
Jun	85,245	90,806	6.5	439,864	450,654	2.5
Jul	77,886	87,648	12.5	517,750	538,302	4.0
Aug	73,697	89,329	21.2	591,447	627,631	6.1
Sep	70,776	72,571	2.5	662,223	700,202	5.7
Oct	68,134	68,674	0.8	730,357	768,876	5.3
Nov	59,116	61,809	4.6	789,473	830,685	5.2
Dec	55,193			844,666		

See footnote(s) at end of table.

--continued

**Dairy Products: Production by Product and Month,
United States, 2004-2005 ¹ (continued)**

Product and Month	By Month			Cumulative		
	2004	2005	Change From 2004	2004	2005	Change From 2004
	<i>1,000 Gallons</i>	<i>1,000 Gallons</i>	<i>Percent</i>	<i>1,000 Gallons</i>	<i>1,000 Gallons</i>	<i>Percent</i>
Ice Cream, Lowfat						
Jan	26,381	27,079	2.6	26,381	27,079	2.6
Feb	28,440	28,083	-1.3	54,821	55,162	0.6
Mar	37,856	36,580	-3.4	92,677	91,742	-1.0
Apr	39,687	35,701	-10.0	132,364	127,443	-3.7
May	38,796	35,568	-8.3	171,160	163,011	-4.8
Jun	41,920	41,736	-0.4	213,080	204,747	-3.9
Jul	42,430	39,414	-7.1	255,510	244,161	-4.4
Aug	39,329	40,406	2.7	294,839	284,567	-3.5
Sep	34,495	32,540	-5.7	329,334	317,107	-3.7
Oct	31,233	29,648	-5.1	360,567	346,755	-3.8
Nov	27,363	26,523	-3.1	387,930	373,278	-3.8
Dec	27,544			415,474		
Ice Cream, NF, Hard						
Jan	1,359	1,164	-14.3	1,359	1,164	-14.3
Feb	1,462	1,619	10.7	2,821	2,783	-1.3
Mar	1,669	1,670	0.1	4,490	4,453	-0.8
Apr	2,009	1,642	-18.3	6,499	6,095	-6.2
May	1,757	1,745	-0.7	8,256	7,840	-5.0
Jun	1,904	1,855	-2.6	10,160	9,695	-4.6
Jul	1,725	1,966	14.0	11,885	11,661	-1.9
Aug	1,708	1,800	5.4	13,593	13,461	-1.0
Sep	1,455	1,501	3.2	15,048	14,962	-0.6
Oct	1,630	1,471	-9.8	16,678	16,433	-1.5
Nov	1,118	1,170	4.7	17,796	17,603	-1.1
Dec	1,281			19,077		
Sherbet, Hard						
Jan	3,558	4,194	17.9	3,558	4,194	17.9
Feb	3,837	4,116	7.3	7,395	8,310	12.4
Mar	5,295	4,915	-7.2	12,690	13,225	4.2
Apr	4,665	5,047	8.2	17,355	18,272	5.3
May	4,714	5,022	6.5	22,069	23,294	5.6
Jun	5,602	5,710	1.9	27,671	29,004	4.8
Jul	4,700	5,408	15.1	32,371	34,412	6.3
Aug	4,690	5,685	21.2	37,061	40,097	8.2
Sep	4,214	4,938	17.2	41,275	45,035	9.1
Oct	3,638	4,305	18.3	44,913	49,340	9.9
Nov	3,434	3,422	-0.3	48,347	52,762	9.1
Dec	2,920			51,267		

See footnote(s) at end of table.

--continued

**Dairy Products: Production by Product and Month,
United States, 2004-2005 (continued)**

Product and Month	By Month			Cumulative		
	2004	2005	Change From 2004	2004	2005	Change From 2004
	<i>1,000 Pounds</i>	<i>1,000 Pounds</i>	<i>Percent</i>	<i>1,000 Pounds</i>	<i>1,000 Pounds</i>	<i>Percent</i>
Sour Cream						
Jan	75,950	76,883	1.2	75,950	76,883	1.2
Feb	69,869	75,324	7.8	145,819	152,207	4.4
Mar	84,898	87,189	2.7	230,717	239,396	3.8
Apr	74,707	72,041	-3.6	305,424	311,437	2.0
May	75,132	85,130	13.3	380,556	396,567	4.2
Jun	80,905	83,642	3.4	461,461	480,209	4.1
Jul	76,850	77,890	1.4	538,311	558,099	3.7
Aug	82,337	92,610	12.5	620,648	650,709	4.8
Sep	77,726	79,014	1.7	698,374	729,723	4.5
Oct	83,612	89,357	6.9	781,986	819,080	4.7
Nov	104,098	107,207	3.0	886,084	926,287	4.5
Dec	94,078			980,162		

See footnote(s) at end of table.

--continued

**Dairy Products: Production by Product and Month,
United States, 2004-2005 (continued)**

Product and Month	By Month			Cumulative		
	2004	2005	Change From 2004	2004	2005	Change From 2004
	<i>1,000 Pounds</i>	<i>1,000 Pounds</i>	<i>Percent</i>	<i>1,000 Pounds</i>	<i>1,000 Pounds</i>	<i>Percent</i>
Yogurt						
Jan	217,302	223,206	2.7	217,302	223,206	2.7
Feb	216,153	237,598	9.9	433,455	460,804	6.3
Mar	247,890	265,285	7.0	681,345	726,089	6.6
Apr	226,545	251,984	11.2	907,890	978,073	7.7
May	242,139	262,207	8.3	1,150,029	1,240,280	7.8
Jun	241,514	252,992	4.8	1,391,543	1,493,272	7.3
Jul	212,831	227,077	6.7	1,604,374	1,720,349	7.2
Aug	230,018	250,022	8.7	1,834,392	1,970,371	7.4
Sep	243,742	262,708	7.8	2,078,134	2,233,079	7.5
Oct	223,663	236,843	5.9	2,301,797	2,469,922	7.3
Nov	193,091	207,642	7.5	2,494,888	2,677,564	7.3
Dec	213,766			2,708,654		

See footnote(s) at end of table.

--continued

**Dairy Products: Production by Product and Month,
United States, 2004-2005 ¹ (continued)**

Product and Month	By Month			Cumulative		
	2004	2005	Change From 2004	2004	2005	Change From 2004
	<i>1,000 Gallons</i>	<i>1,000 Gallons</i>	<i>Percent</i>	<i>1,000 Gallons</i>	<i>1,000 Gallons</i>	<i>Percent</i>
Frozen Yogurt						
Jan	5,141	4,299	-16.4	5,141	4,299	-16.4
Feb	5,448	4,457	-18.2	10,589	8,756	-17.3
Mar	6,269	6,010	-4.1	16,858	14,766	-12.4
Apr	6,369	5,345	-16.1	23,227	20,111	-13.4
May	6,148	6,241	1.5	29,375	26,352	-10.3
Jun	6,580	6,064	-7.8	35,955	32,416	-9.8
Jul	5,704	5,600	-1.8	41,659	38,016	-8.7
Aug	6,137	5,938	-3.2	47,796	43,954	-8.0
Sep	5,753	5,149	-10.5	53,549	49,103	-8.3
Oct	5,270	4,690	-11.0	58,819	53,793	-8.5
Nov	4,705	4,218	-10.4	63,524	58,011	-8.7
Dec	4,148			67,672		

¹ October 2005 data revised.

² Monthly 2004 data revised. January 2005 data revised.

³ Excludes all modified dry whey products.

**Total Cheese, Excluding Cottage Cheese: Production by
State and United States, November 2004-2005**

State	Nov 2004	Oct ¹ 2005	Nov 2005	Change From	
				Nov 2004	Oct 2005
	<i>1,000 Pounds</i>	<i>1,000 Pounds</i>	<i>1,000 Pounds</i>	<i>Percent</i>	<i>Percent</i>
CA	173,965	176,080	177,420	2.0	0.8
ID	65,676				
IL	7,687	8,081	7,854	2.2	-2.8
IA	12,875	12,392	12,379	-3.9	-0.1
MA	101	58	53	-47.5	-8.6
MN	49,487	51,976	50,532	2.1	-2.8
MO	9,611				
NY	60,571	59,867	58,368	-3.6	-2.5
OH	14,917	17,403	16,800	12.6	-3.5
PA	33,752	32,396	31,453	-6.8	-2.9
SD	14,011	14,326	14,679	4.8	2.5
UT	4,719	5,871	5,895	24.9	0.4
WI	197,739	201,376	204,675	3.5	1.6
Oth Sts ²	109,234	178,423	181,378	66.0	1.7
US	754,345	758,249	761,486	0.9	0.4
N Atlantic	110,061	105,977	105,054	-4.5	-0.9
S Atlantic	2,845	2,705	2,843	-0.1	5.1
E N Central	230,111	237,049	239,538	4.1	1.0
W N Central	89,502	84,487	83,093	-7.2	-1.6
S Central	7,104	8,409	9,699	36.5	15.3
West	314,722	319,622	321,259	2.1	0.5

¹ Revised.

² States not shown when fewer than 3 plants reported or individual plant operations could be disclosed. Percent change shown only when comparable States are included in the calculation.

American Cheese: Production by State and United States, November 2004-2005

State	Nov 2004	Oct ¹ 2005	Nov 2005	Change From	
				Nov 2004	Oct 2005
	<i>1,000 Pounds</i>	<i>1,000 Pounds</i>	<i>1,000 Pounds</i>	<i>Percent</i>	<i>Percent</i>
CA	69,154	70,337	71,067	2.8	1.0
IA	10,088	9,594	9,614	-4.7	0.2
MN	47,065	49,262	47,632	1.2	-3.3
NY	5,015	4,767	4,936	-1.6	3.5
OH	2,219	3,459	3,280	47.8	-5.2
OR	9,352	9,983	9,116	-2.5	-8.7
WI	69,909	68,131	71,070	1.7	4.3
Oth Sts ²	89,809	95,964	95,463	6.3	-0.5
US	302,611	311,497	312,178	3.2	0.2
Atlantic	10,582	10,467	10,800	2.1	3.2
E N Central	73,038	72,555	75,128	2.9	3.5
W N Central	64,357	66,338	64,982	1.0	-2.0
S Central	3,806	2,790	3,427	-10.0	22.8
West	150,828	159,347	157,841	4.6	-0.9

¹ Revised.

² States not shown when fewer than 3 plants reported or individual plant operations could be disclosed. Percent change shown only when comparable States are included in the calculation.

Cheddar Cheese: Production by State and United States, November 2004-2005

State	Nov ¹ 2004	Oct ² 2005	Nov 2005	Change From	
				Nov 2004	Oct 2005
	<i>1,000 Pounds</i>	<i>1,000 Pounds</i>	<i>1,000 Pounds</i>	<i>Percent</i>	<i>Percent</i>
CA	44,344	41,662	41,707	-5.9	0.1
MN	42,967	45,409	43,509	1.3	-4.2
NY	4,899	4,682	4,825	-1.5	3.1
WI	53,621	53,722	55,940	4.3	4.1
Oth Sts ³	96,522	102,810	101,990	5.7	-0.8
US	242,353	248,285	247,971	2.3	-0.1
Atlantic	10,061	10,141	10,455	3.9	3.1
E N Cen	55,350	55,857	58,068	4.9	4.0
W N Cen	55,582	58,019	55,802	0.4	-3.8
S Cen	3,805	2,789	3,426	-10.0	22.8
West	117,555	121,479	120,220	2.3	-1.0

¹ Revised 2004 Cheddar Cheese data released in the May 5, 2005 Dairy Products Report.

² Revised.

³ States not shown when fewer than 3 plants reported or individual plant operations could be disclosed. Percent change shown only when comparable States are included in the calculation.

Mozzarella Cheese: Production by State and United States, November 2004-2005

State	Nov 2004	Oct ¹ 2005	Nov 2005	Change From	
				Nov 2004	Oct 2005
	<i>1,000 Pounds</i>	<i>1,000 Pounds</i>	<i>1,000 Pounds</i>	<i>Percent</i>	<i>Percent</i>
CA	80,234	81,933	85,272	6.3	4.1
NY	13,871	14,214	14,736	6.2	3.7
PA	16,703	15,714	16,726	0.1	6.4
WI	65,722	66,311	66,630	1.4	0.5
Oth Sts ²	73,139	64,855	68,434	-6.4	5.5
US	249,669	243,027	251,798	0.9	3.6
Atlantic ³	38,682	35,236	37,700	-2.5	7.0
E N Central	74,435	75,394	75,824	1.9	0.6
West	127,405	123,328	129,232	1.4	4.8

¹ Revised.

² States not shown when fewer than 3 plants reported or individual plant operations could be disclosed. Percent change shown only when comparable States are included in the calculation.

³ Region totals may not add to U.S. when compiled regions could not be disclosed.

Butter: Production by State and United States, November 2004-2005

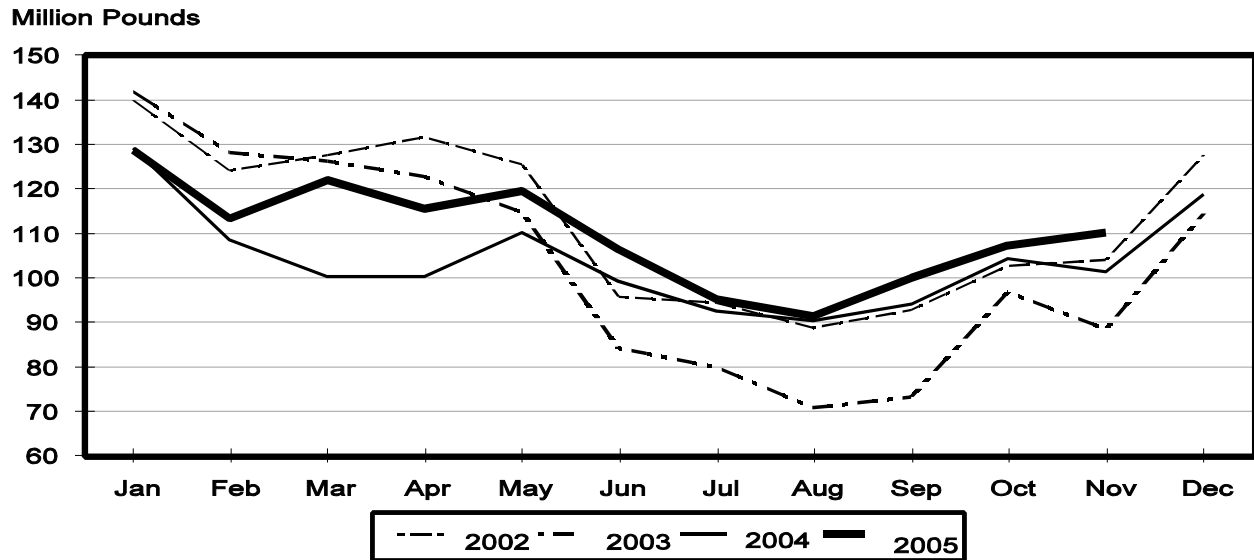
State	Nov 2004	Oct ¹ 2005	Nov 2005	Change From	
				Nov 2004	Oct 2005
	<i>1,000 Pounds</i>	<i>1,000 Pounds</i>	<i>1,000 Pounds</i>	<i>Percent</i>	<i>Percent</i>
CA	33,655	36,216	36,281	7.8	0.2
NY	1,125	1,153	1,193	6.0	3.5
PA	4,570	5,700	5,967	30.6	4.7
WI	27,735	29,622	31,840	14.8	7.5
Oth Sts ²	34,291	34,546	34,863	1.7	0.9
US	101,376	107,237	110,144	8.6	2.7
N Atlantic ³	7,781	9,392	9,226	18.6	-1.8
E N Central	28,974	31,619	33,961	17.2	7.4
W N Central	9,178	5,323	5,575	-39.3	4.7
West	45,439	52,012	51,768	13.9	-0.5

¹ Revised.

² States not shown when fewer than 3 plants reported or individual plant operations could be disclosed. Percent change shown only when comparable States are included in the calculation.

³ Region totals may not add to U.S. when compiled regions could not be disclosed.

Total Butter Production United States



**Nonfat Dry Milk, Human: Production by State
and United States, November 2004-2005**

State	Nov 2004	Oct ¹ 2005	Nov 2005	Change From	
				Nov 2004	Oct 2005
	<i>1,000 Pounds</i>	<i>1,000 Pounds</i>	<i>1,000 Pounds</i>	<i>Percent</i>	<i>Percent</i>
CA	53,325	40,491	50,985	-4.4	25.9
PA	1,946	3,577	5,542	184.8	54.9
Oth Sts ²	28,518	29,639	32,659	14.5	10.2
US	83,789	73,707	89,186	6.4	21.0
Atlantic	4,774	8,263	10,359	117.0	25.4
E N Central	2,011	2,601	4,963	146.8	90.8
W N Central	2,817	2,589	2,403	-14.7	-7.2
S Central	2,388	1,731	4,637	94.2	167.9
West	71,799	58,523	66,824	-6.9	14.2

¹ Revised.

² States not shown when fewer than 3 plants reported or individual plant operations could be disclosed. Percent change shown only when comparable States are included in the calculation.

**Dry Whey, Human: Production by State
and United States, November 2004-2005**

State	Nov 2004	Oct ¹ 2005	Nov 2005	Change From	
				Nov 2004	Oct 2005
	<i>1,000 Pounds</i>	<i>1,000 Pounds</i>	<i>1,000 Pounds</i>	<i>Percent</i>	<i>Percent</i>
CA	9,347	10,400	12,505	33.8	20.2
MN		3,872	3,653		-5.7
NY	9,404	10,065	10,104	7.4	0.4
PA	8,044	7,229	8,356	3.9	15.6
UT	1,846	1,975	1,883	2.0	-4.7
WI	25,437	21,704	24,137	-5.1	11.2
Oth Sts ²	23,140	20,531	20,413	-11.8	-0.6
US	77,218	75,776	81,051	5.0	7.0
Atlantic	17,448	17,294	18,460	5.8	6.7
Central	36,738	33,711	35,939	-2.2	6.6
West	23,032	24,771	26,652	15.7	7.6

¹ Revised.

² States not shown when fewer than 3 plants reported or individual plant operations could be disclosed. Percent change shown only when comparable States are included in the calculation.

Ice Cream, Hard: Production by State and United States, November 2004-2005

State	Nov 2004	Oct ¹ 2005	Nov 2005	Change From	
				Nov 2004	Oct 2005
	<i>1,000 Gallons</i>	<i>1,000 Gallons</i>	<i>1,000 Gallons</i>	<i>Percent</i>	<i>Percent</i>
CA	8,102	9,810	9,973	23.1	1.7
FL	1,755	1,600	1,700	-3.1	6.3
IL	2,413	2,899	2,632	9.1	-9.2
IN	7,048	7,820	6,899	-2.1	-11.8
MD	1,039	1,242	760	-26.9	-38.8
MA	3,959	4,707	4,162	5.1	-11.6
MI	1,268	1,440	1,850	45.9	28.5
MN	2,717	3,041	3,001	10.5	-1.3
MO	1,044	2,202	1,159	11.0	-47.4
NY	1,798	1,873	1,671	-7.1	-10.8
NC	947	1,378	1,237	30.6	-10.2
OH	1,410	1,718	1,404	-0.4	-18.3
OR	879	920	788	-10.4	-14.3
PA	3,602	2,927	2,974	-17.4	1.6
TN	1,171	1,311	979	-16.4	-25.3
TX	2,918	4,619	3,490	19.6	-24.4
UT	1,874	1,912	2,064	10.1	7.9
Oth Sts ²	15,172	17,255	15,066	-0.7	-12.7
US	59,116	68,674	61,809	4.6	-10.0
N Atlantic	11,260	12,832	11,959	6.2	-6.8
S Atlantic	4,886	5,569	4,703	-3.7	-15.6
E N Central	12,769	14,650	13,411	5.0	-8.5
W N Central	9,549	10,940	9,061	-5.1	-17.2
S Central	7,286	9,552	7,744	6.3	-18.9
West	13,366	15,131	14,931	11.7	-1.3

¹ Revised.

² States not shown when fewer than 3 plants reported or individual plant operations could be disclosed. Percent change shown only when comparable States are included in the calculation.

**Canned Milk and Dry Milk Products: Manufacturers' Shipments,
and Stocks, November, 2004-2005**

Product	Nov 2004	Oct 2005 ¹	Nov 2005	Change From	
				Nov 2004	Oct 2005
	Manufacturers' Shipments ²				
	<i>1,000 Pounds</i>	<i>1,000 Pounds</i>	<i>1,000 Pounds</i>	<i>Percent</i>	<i>Percent</i>
Nonfat Dry Milk, Human	93,421	64,233	75,635	-19.0	17.8
	Manufacturers' Stocks End-of-Month ³				
	<i>1,000 Pounds</i>	<i>1,000 Pounds</i>	<i>1,000 Pounds</i>	<i>Percent</i>	<i>Percent</i>
Canned Evaporated and Condensed Whole Milk	37,541	67,565	40,488	7.9	-40.1
Nonfat Dry Milk, Human	94,802	88,626	89,659	-5.4	1.2
Dry Buttermilk, Total	7,569	9,324	10,657	40.8	14.3

¹ Revised.

² For dry products, shipments of bulk goods only.

³ Stocks held by manufacturers at all points and in transit.

Procedures and Reliability: Estimates included in this report are based on data provided each month by manufacturers of these products. In 32 States, the State Departments of Agriculture assist in collection of data, which eliminates duplicate reporting and reduces respondent burden. Data are collected by mail, personal and telephone interviews following the close of each month. There were 1,096 manufacturers that made one or more products in 2004. Each month, reports are generally received from all dairy plants in States with small numbers of plants. In States with large numbers of plants, survey procedures are designed to obtain monthly reports from all large plants and from a sample of small plants. Monthly estimates are based upon returns from about 70 percent of the plants which account for 70 to 90 percent of the total production of major dairy products.

Revision Policy: Monthly estimates are subject to revision the month following the preliminary estimates. Annual estimates are published in the "**Dairy Products**" report published each April which includes any revisions made to current and previous year. An attempt is made to get information from all plants for preparing these estimates

ACCESS TO REPORTS!!

For your convenience, there are several ways to obtain NASS reports, data products, and services:

INTERNET ACCESS

All NASS reports are available free of charge on the worldwide Internet. For access, connect to the Internet and go to the NASS Home Page at: www.nass.usda.gov.

E-MAIL SUBSCRIPTION

All NASS reports are available by subscription free of charge direct to your e-mail address. Starting with the NASS Home Page at www.nass.usda.gov, under the right navigation, *Receive reports by Email*, click on **National** or **State**. Follow the instructions on the screen.

PRINTED REPORTS OR DATA PRODUCTS

CALL OUR TOLL-FREE ORDER DESK: 800-999-6779 (U.S. and Canada)
Other areas, please call 703-605-6220 FAX: 703-605-6900
(Visa, MasterCard, check, or money order acceptable for payment.)

ASSISTANCE

For **assistance** with general agricultural statistics or further information about NASS or its products or services, contact the **Agricultural Statistics Hotline** at **800-727-9540**, 7:30 a.m. to 4:00 p.m. ET, or e-mail: nass@nass.usda.gov.

The U.S. Department of Agriculture (USDA) prohibits discrimination in all its programs and activities on the basis of race, color, national origin, age, disability, and where applicable, sex, marital status, familial status, parental status, religion, sexual orientation, genetic information, political beliefs, reprisal, or because all or part of an individual's income is derived from any public assistance program. (Not all prohibited bases apply to all programs.) Persons with disabilities who require alternative means for communication of program information (Braille, large print, audiotape, etc.) should contact USDA's TARGET Center at (202) 720-2600 (voice and TDD).

To file a complaint of discrimination, write to USDA, Director, Office of Civil Rights, 1400 Independence Avenue, S.W., Washington, D.C. 20250-9410, or call (800) 795-3272 (voice) or (202) 720-6382 (TDD). USDA is an equal opportunity provider and employer.