



# NASS

FACT FINDERS FOR AGRICULTURE  
UNITED STATES DEPARTMENT OF AGRICULTURE

Washington, D.C.

# Dairy Products

---

Released March 3, 2006, by the National Agricultural Statistics Service (NASS), Agricultural Statistics Board, U.S. Department of Agriculture. For information on *Dairy Products* call Shawn Clark at (202) 690-3236, office hours 7:30 a.m. to 4:00 p.m. ET.

## January 2006 Highlights

**Total cheese** output (excluding cottage cheese) was 764 million pounds, 1.3 percent above January 2005 but 3.4 percent below December 2005.

**Italian type cheese** production totaled 328 million pounds, up 3.4 percent January 2005 but 2.0 percent below December 2005.

**American type cheese** production totaled 317 million pounds, 1.5 percent below January 2005 and 2.4 percent below December 2005.

**Butter** production was 145 million pounds, 13.1 percent above January 2005 and 15.3 percent above December 2005.

**Frozen dessert:** (comparisons with January 2005)

Ice cream, Regular (hard) --- 61.2 million gallons, up 1.3 percent.

Ice cream, Lowfat (total) --- 25.5 million gallons, down 5.8 percent.

Ice cream, Nonfat (hard) --- 1.35 million gallons, up 15.7 percent.

Sherbet (hard) --- 3.86 million gallons, down 8.0 percent.

Frozen Yogurt (total) --- 4.02 million gallons, down 6.6 percent.

**Nonfat dry milk for human food:** (compared with January 2005) --- 102 million pounds, up 9.2 percent.

**Dry whey products:** (comparisons with January 2005)

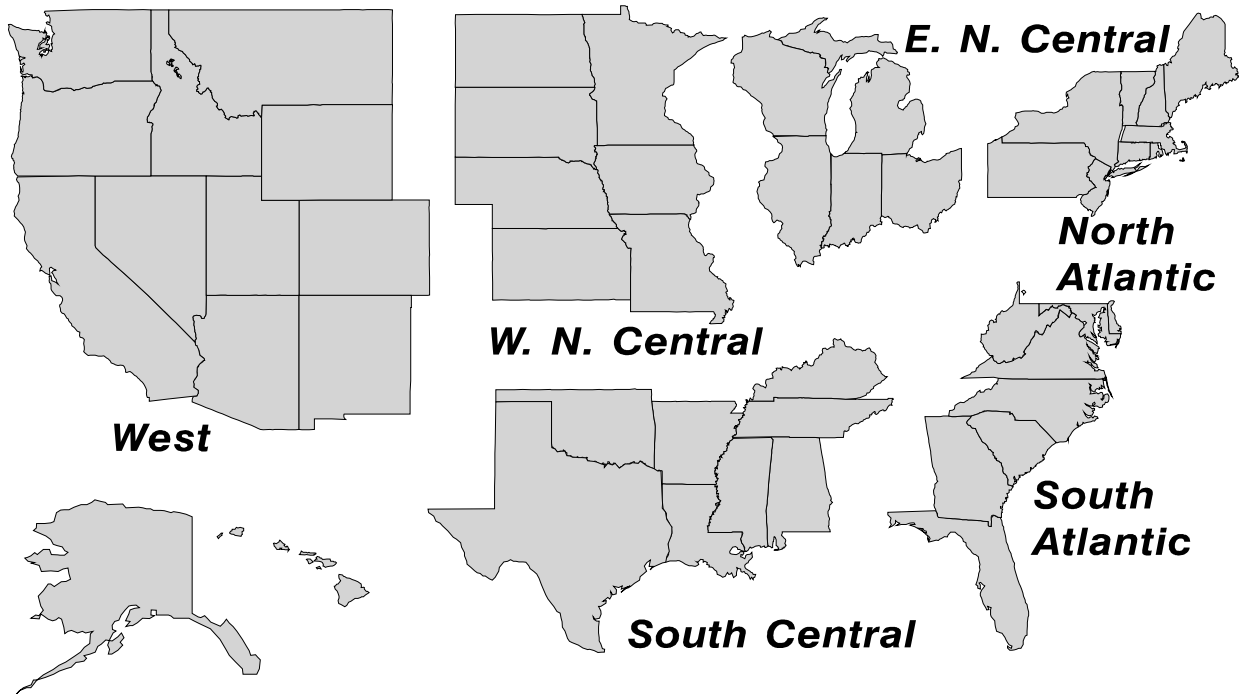
Dry whey, human --- 86.6 million pounds, up 8.6 percent.

Dry whey, animal --- 6.14 million pounds, down 3.9 percent.

Dry whey, total --- 92.8 million pounds, up 7.6 percent.

## U. S. Geographic Regions Dairy Products

State totals are not published when fewer than 3 firms have reported or one firm comprises more than 60 percent of the State total. If we are not able to publish a region for confidentiality reasons, it will be combined with other regions when possible. For example, if North Atlantic can not be published, then it will be combined with South Atlantic to publish Atlantic. The West North Central and East North Central will be combined, if necessary, to form North Central. In the event that neither could be published, they may be combined with South Central to publish Central. Some tables will have only limited regions shown, therefore the regions may not add to the United States total.



## Contents

## Page

Dairy Products: Production by Product, United States .....	1
Whey and Modified Whey Products: Production, Stocks, and Prices, United States .....	2
Dairy Products: Production by Product and Month, United States .....	3
Select Commodities by State and United States .....	10
Canned Milk and Dry Milk Products: Manufacturer's Shipments, Stocks, and Selling Prices .....	15
Procedures and Reliability .....	16

**Dairy Products: Production by Product,  
United States, January, 2005-2006**

Product	Jan 2005	Dec 2005 <sup>1</sup>	Jan 2006	Change From	
				Jan 2005	Dec 2005
	<i>1,000 Pounds</i>	<i>1,000 Pounds</i>	<i>1,000 Pounds</i>	<i>Percent</i>	<i>Percent</i>
Butter	128,653	126,167	145,477	13.1	15.3
Cheese					
American Types <sup>2</sup>	322,188	325,024	317,278	-1.5	-2.4
Cheddar	261,049	258,283	260,071	-0.4	0.7
Swiss	23,293	26,825	26,199	12.5	-2.3
Brick and Muenster	5,648	8,595	8,119	43.8	-5.5
Cream and Neufchatel	48,738	63,865	54,341	11.5	-14.9
Hispanic	12,708	14,234	13,109	3.2	-7.9
Mozzarella	251,399	267,131	259,676	3.3	-2.8
Other Italian Types	65,790	67,591	68,229	3.7	0.9
Total Italian Types	317,189	334,722	327,905	3.4	-2.0
All Other Types	24,920	18,022	17,308	-30.5	-4.0
Total	754,684	791,287	764,259	1.3	-3.4
Cottage Cheese, Curd <sup>3</sup>	35,713	33,324	34,964	-2.1	4.9
Cottage Cheese, Cream <sup>4</sup>	29,496	26,119	27,718	-6.0	6.1
Cottage Cheese, Lowfat <sup>5</sup>	29,468	28,468	31,355	6.4	10.1
Canned Evaporated and Condensed Whole Milk	41,896	48,101	35,578	-15.1	-26.0
Dry Whole Milk	4,114	2,936	2,338	-43.2	-20.4
Nonfat Dry Milk, Human	93,775	103,125	102,409	9.2	-0.7
Dry Skim Milk, Animal	383	468	350	-8.6	-25.2
Dry Buttermilk	6,872	6,355	6,905	0.5	8.7
Sour Cream	76,883	97,413	83,167	8.2	-14.6
Yogurt, Plain & Flavored	223,206	216,334	251,663	12.7	16.3
	<i>1,000 Gallons</i>	<i>1,000 Gallons</i>	<i>1,000 Gallons</i>	<i>Percent</i>	<i>Percent</i>
Frozen Products					
Ice Cream, Regular, Hard	60,440	55,565	61,211	1.3	10.2
Ice Cream, Lowfat, Hard	7,705	7,957	8,316	7.9	4.5
Ice Cream, Lowfat, Soft	19,374	15,086	17,189	-11.3	13.9
Ice Cream, Lowfat, Total	27,079	23,043	25,505	-5.8	10.7
Ice Cream, Nonfat, Hard	1,164	1,182	1,347	15.7	14.0
Sherbet, Hard	4,194	3,413	3,859	-8.0	13.1
Water and Juice Ices	5,162	3,109	4,741	-8.2	52.5
Frozen Yogurt, Total	4,299	4,366	4,015	-6.6	-8.0
Regular & Lowfat, Hard	1,328	1,077	1,048	-21.1	-2.7
Nonfat, Hard	611	754	607	-0.7	-19.5
Other Frozen Dairy Products	943	408	550	-41.7	34.8
Mix for Frozen Products					
Ice Cream Mix	34,919	30,014	34,213	-2.0	14.0
Ice Cream, Lowfat, Mix	15,001	12,711	14,088	-6.1	10.8
Ice Cream, Nonfat, Mix	859	903	875	1.9	-3.1
Sherbet Mix	2,662	2,437	2,944	10.6	20.8
Yogurt Mix	2,529	2,568	2,362	-6.6	-8.0

<sup>1</sup> Revised.

<sup>2</sup> Includes Cheddar, Colby, Monterey, and Jack.

<sup>3</sup> Mostly used for processing into cream or lowfat cottage cheese.

<sup>4</sup> Fat content 4 percent or more.

<sup>5</sup> Fat content less than 4 percent.

**Whey and Modified Whey Products: Production, Stocks,  
and Prices, United States, January, 2005-2006**

Product	Jan 2005	Dec 2005 <sup>1</sup>	Jan 2006	Change From	
				Jan 2005	Dec 2005
<b>Production</b>					
	<i>1,000 Pounds</i>	<i>1,000 Pounds</i>	<i>1,000 Pounds</i>	<i>Percent</i>	<i>Percent</i>
Condensed Whey, Solids Content <sup>2</sup>					
Sweet-Type, Human	6,319	8,701	8,373	32.5	-3.8
Dry Whey Products					
Dry Whey, Human	79,813	80,180	86,646	8.6	8.1
Dry Whey, Animal	6,381	6,117	6,135	-3.9	0.3
Dry Whey, Total	86,194	86,297	92,781	7.6	7.5
Reduced Lactose and Minerals					
Human Food	4,303	3,592	3,760	-12.6	4.7
Animal Feed	4,053	4,585	4,061	0.2	-11.4
Lactose, Human and Animal	56,092	56,654	59,377	5.9	4.8
Whey					
Protein Concentrate					
Human <sup>3</sup>	24,523	30,175	29,917	22.0	-0.9
Animal <sup>3</sup>	4,415	4,219	4,949	12.1	17.3
Total <sup>3</sup>	28,938	34,394	34,866	20.5	1.4
25.0-49.9 Percent <sup>4</sup>	20,647	24,999	25,544	23.7	2.2
50.0-89.9 Percent <sup>4</sup>	8,291	9,395	9,322	12.4	-0.8
Protein Isolates <sup>5</sup>	2,463	2,497	2,367	-3.9	-5.2
<b>Manufacturers' Stocks End-of-Month <sup>6</sup></b>					
	<i>1,000 Pounds</i>	<i>1,000 Pounds</i>	<i>1,000 Pounds</i>	<i>Percent</i>	<i>Percent</i>
Dry Whey Products					
Dry Whey, Human	37,939	36,758	37,205	-1.9	1.2
Dry Whey, Animal	3,693	3,720	3,562	-3.5	-4.2
Dry Whey, Total	41,632	40,478	40,767	-2.1	0.7
Reduced Lactose and Minerals					
Human and Animal <sup>7</sup>	4,815	4,260	4,696	-2.5	10.2
Lactose, Human and Animal	73,657	53,776	51,991	-29.4	-3.3
Whey					
Protein Concentrate					
Human <sup>3</sup>	24,626	29,044	31,418	27.6	8.2
Animal <sup>3</sup>	2,513	2,384	2,523	0.4	5.8
Total <sup>3</sup>	27,139	31,428	33,941	25.1	8.0
25.0-49.9 Percent <sup>4</sup>	15,529	19,914	20,824	34.1	4.6
50.0-89.9 Percent <sup>4</sup>	11,610	11,514	13,117	13.0	13.9
<b>Manufacturers' Selling Price <sup>8</sup></b>					
	<i>Cents per Pound</i>	<i>Cents per Pound</i>	<i>Cents per Pound</i>	<i>Cents Change</i>	<i>Cents Change</i>
Dry Whey, Animal	22.5	27.9	30.6	8.1	2.7

<sup>1</sup> Revised.

<sup>2</sup> Final marketable product only. Does not include quantity used or shipped to another plant for further processing into dry whey or modified whey products. Does not include sweet-type, animal whey.

<sup>3</sup> Whey Protein Concentrate, 25.0 to 89.9 percent.

<sup>4</sup> Whey Protein Concentrate, Human and Animal.

<sup>5</sup> Whey Protein Isolate, 90.0 percent or greater.

<sup>6</sup> Stocks held by manufacturers at all points and in transit.

<sup>7</sup> Reduced lactose and minerals stocks combined to avoid disclosure of individual operations.

<sup>8</sup> Prices for bulk goods, f.o.b. plant. Average monthly prices reported by firms.

**Dairy Products: Production by Product and Month,  
United States, 2005-2006 <sup>1</sup>**

Product and Month	By Month			Cumulative		
	2005	2006	Change From 2005	2005	2006	Change From 2005
	<i>1,000 Pounds</i>	<i>1,000 Pounds</i>	<i>Percent</i>	<i>1,000 Pounds</i>	<i>1,000 Pounds</i>	<i>Percent</i>
<b>Total Cheese</b>						
Jan	754,684	764,259	1.3	754,684	764,259	1.3
Feb	707,365			1,462,049		
Mar	799,304			2,261,353		
Apr	756,908			3,018,261		
May	785,539			3,803,800		
Jun	762,689			4,566,489		
Jul	737,713			5,304,202		
Aug	754,063			6,058,265		
Sep	741,911			6,800,176		
Oct	758,249			7,558,425		
Nov	761,511			8,319,936		
Dec	791,287			9,111,223		
<b>American Cheese</b>						
Jan	322,188	317,278	-1.5	322,188	317,278	-1.5
Feb	293,137			615,325		
Mar	331,544			946,869		
Apr	328,413			1,275,282		
May	332,821			1,608,103		
Jun	321,604			1,929,707		
Jul	317,037			2,246,744		
Aug	311,809			2,558,553		
Sep	301,737			2,860,290		
Oct	311,497			3,171,787		
Nov	310,171			3,481,958		
Dec	325,024			3,806,982		
<b>Cheddar Cheese</b>						
Jan	261,049	260,071	-0.4	261,049	260,071	-0.4
Feb	237,535			498,584		
Mar	268,495			767,079		
Apr	263,046			1,030,125		
May	266,543			1,296,668		
Jun	258,215			1,554,883		
Jul	253,813			1,808,696		
Aug	244,731			2,053,427		
Sep	239,514			2,292,941		
Oct	248,285			2,541,226		
Nov	246,224			2,787,450		
Dec	258,283			3,045,733		

See footnote(s) at end of table.

--continued

**Dairy Products: Production by Product and Month,  
United States, 2005-2006 <sup>1</sup> (continued)**

Product and Month	By Month			Cumulative		
	2005	2006	Change From 2005	2005	2006	Change From 2005
	<i>1,000 Pounds</i>	<i>1,000 Pounds</i>	<i>Percent</i>	<i>1,000 Pounds</i>	<i>1,000 Pounds</i>	<i>Percent</i>
Italian Cheese						
Jan	317,189	327,905	3.4	317,189	327,905	3.4
Feb	301,788			618,977		
Mar	340,532			959,509		
Apr	313,394			1,272,903		
May	329,268			1,602,171		
Jun	320,911			1,923,082		
Jul	300,971			2,224,053		
Aug	310,591			2,534,644		
Sep	307,440			2,842,084		
Oct	310,769			3,152,853		
Nov	319,271			3,472,124		
Dec	334,722			3,806,846		
Mozzarella						
Jan	251,399	259,676	3.3	251,399	259,676	3.3
Feb	239,290			490,689		
Mar	269,487			760,176		
Apr	248,480			1,008,656		
May	262,483			1,271,139		
Jun	254,662			1,525,801		
Jul	242,877			1,768,678		
Aug	243,552			2,012,230		
Sep	242,011			2,254,241		
Oct	243,027			2,497,268		
Nov	252,049			2,749,317		
Dec	267,131			3,016,448		
Other Italian						
Jan	65,790	68,229	3.7	65,790	68,229	3.7
Feb	62,498			128,288		
Mar	71,045			199,333		
Apr	64,914			264,247		
May	66,785			331,032		
Jun	66,249			397,281		
Jul	58,094			455,375		
Aug	67,039			522,414		
Sep	65,429			587,843		
Oct	67,742			655,585		
Nov	67,222			722,807		
Dec	67,591			790,398		

See footnote(s) at end of table.

--continued

**Dairy Products: Production by Product and Month,  
United States, 2005-2006 <sup>1</sup> (continued)**

Product and Month	By Month			Cumulative		
	2005	2006	Change From 2005	2005	2006	Change From 2005
	<i>1,000 Pounds</i>	<i>1,000 Pounds</i>	<i>Percent</i>	<i>1,000 Pounds</i>	<i>1,000 Pounds</i>	<i>Percent</i>
Butter						
Jan	128,653	145,477	13.1	128,653	145,477	13.1
Feb	113,492			242,145		
Mar	122,135			364,280		
Apr	115,659			479,939		
May	119,508			599,447		
Jun	106,360			705,807		
Jul	95,310			801,117		
Aug	91,603			892,720		
Sep	100,095			992,815		
Oct	107,237			1,100,052		
Nov	111,035			1,211,087		
Dec	126,167			1,337,254		
Nonfat Dry Milk, Human						
Jan	93,775	102,409	9.2	93,775	102,409	9.2
Feb	94,334			188,109		
Mar	109,049			297,158		
Apr	111,223			408,381		
May	124,105			532,486		
Jun	124,642			657,128		
Jul	110,667			767,795		
Aug	86,870			854,665		
Sep	71,053			925,718		
Oct	73,707			999,425		
Nov	88,943			1,088,368		
Dec	103,125			1,191,493		
Total Dry Whey <sup>2</sup>						
Jan	86,194	92,781	7.6	86,194	92,781	7.6
Feb	79,884			166,078		
Mar	91,544			257,622		
Apr	90,958			348,580		
May	93,158			441,738		
Jun	89,588			531,326		
Jul	89,261			620,587		
Aug	87,508			708,095		
Sep	83,938			792,033		
Oct	82,139			874,172		
Nov	85,149			959,321		
Dec	86,297			1,045,618		

See footnote(s) at end of table.

--continued



**Dairy Products: Production by Product and Month,  
United States, 2005-2006 <sup>1</sup> (continued)**

Product and Month	By Month			Cumulative		
	2005	2006	Change From 2005	2005	2006	Change From 2005
	<i>1,000 Pounds</i>	<i>1,000 Pounds</i>	<i>Percent</i>	<i>1,000 Pounds</i>	<i>1,000 Pounds</i>	<i>Percent</i>
Cream Cottage Cheese						
Jan	29,496	27,718	-6.0	29,496	27,718	-6.0
Feb	27,939			57,435		
Mar	32,532			89,967		
Apr	30,437			120,404		
May	31,454			151,858		
Jun	31,410			183,268		
Jul	31,935			215,203		
Aug	33,971			249,174		
Sep	32,920			282,094		
Oct	30,632			312,726		
Nov	28,883			341,609		
Dec	26,119			367,728		
Lowfat Cottage Cheese						
Jan	29,468	31,355	6.4	29,468	31,355	6.4
Feb	31,520			60,988		
Mar	33,230			94,218		
Apr	32,589			126,807		
May	34,758			161,565		
Jun	33,889			195,454		
Jul	31,966			227,420		
Aug	36,362			263,782		
Sep	34,363			298,145		
Oct	33,202			331,347		
Nov	31,318			362,665		
Dec	28,468			391,133		
	<i>1,000 Gallons</i>	<i>1,000 Gallons</i>	<i>Percent</i>	<i>1,000 Gallons</i>	<i>1,000 Gallons</i>	<i>Percent</i>
Ice Cream, Regular, Hard						
Jan	60,440	61,211	1.3	60,440	61,211	1.3
Feb	64,240			124,680		
Mar	78,232			202,912		
Apr	77,426			280,338		
May	79,510			359,848		
Jun	90,806			450,654		
Jul	87,648			538,302		
Aug	89,329			627,631		
Sep	72,571			700,202		
Oct	68,674			768,876		
Nov	61,819			830,695		
Dec	55,565			886,260		

See footnote(s) at end of table.

--continued

**Dairy Products: Production by Product and Month,  
United States, 2005-2006 <sup>1</sup> (continued)**

Product and Month	By Month			Cumulative		
	2005	2006	Change From 2005	2005	2006	Change From 2005
	<i>1,000 Gallons</i>	<i>1,000 Gallons</i>	<i>Percent</i>	<i>1,000 Gallons</i>	<i>1,000 Gallons</i>	<i>Percent</i>
<b>Ice Cream, Lowfat</b>						
Jan	27,079	25,505	-5.8	27,079	25,505	-5.8
Feb	28,083			55,162		
Mar	36,580			91,742		
Apr	35,701			127,443		
May	35,568			163,011		
Jun	41,736			204,747		
Jul	39,414			244,161		
Aug	40,406			284,567		
Sep	32,540			317,107		
Oct	29,648			346,755		
Nov	26,242			372,997		
Dec	23,043			396,040		
<b>Ice Cream, NF, Hard</b>						
Jan	1,164	1,347	15.7	1,164	1,347	15.7
Feb	1,619			2,783		
Mar	1,670			4,453		
Apr	1,642			6,095		
May	1,745			7,840		
Jun	1,855			9,695		
Jul	1,966			11,661		
Aug	1,800			13,461		
Sep	1,501			14,962		
Oct	1,471			16,433		
Nov	1,197			17,630		
Dec	1,182			18,812		
<b>Sherbet, Hard</b>						
Jan	4,194	3,859	-8.0	4,194	3,859	-8.0
Feb	4,116			8,310		
Mar	4,915			13,225		
Apr	5,047			18,272		
May	5,022			23,294		
Jun	5,710			29,004		
Jul	5,408			34,412		
Aug	5,685			40,097		
Sep	4,938			45,035		
Oct	4,305			49,340		
Nov	3,481			52,821		
Dec	3,413			56,234		

See footnote(s) at end of table.

--continued

**Dairy Products: Production by Product and Month,  
United States, 2005-2006 (continued)**

Product and Month	By Month			Cumulative		
	2005	2006	Change From 2005	2005	2006	Change From 2005
	<i>1,000 Pounds</i>	<i>1,000 Pounds</i>	<i>Percent</i>	<i>1,000 Pounds</i>	<i>1,000 Pounds</i>	<i>Percent</i>
Sour Cream						
Jan	76,883	83,167	8.2	76,883	83,167	8.2
Feb	75,324			152,207		
Mar	87,189			239,396		
Apr	72,041			311,437		
May	85,130			396,567		
Jun	83,642			480,209		
Jul	77,890			558,099		
Aug	92,610			650,709		
Sep	79,014			729,723		
Oct	89,357			819,080		
Nov	107,252			926,332		
Dec	97,413			1,023,745		

See footnote(s) at end of table.

--continued

**Dairy Products: Production by Product and Month,  
United States, 2005-2006 (continued)**

Product and Month	By Month			Cumulative		
	2005	2006	Change From 2005	2005	2006	Change From 2005
	<i>1,000 Pounds</i>	<i>1,000 Pounds</i>	<i>Percent</i>	<i>1,000 Pounds</i>	<i>1,000 Pounds</i>	<i>Percent</i>
Yogurt						
Jan	223,206	251,663	12.7	223,206	251,663	12.7
Feb	237,598			460,804		
Mar	265,285			726,089		
Apr	251,984			978,073		
May	262,207			1,240,280		
Jun	252,992			1,493,272		
Jul	227,077			1,720,349		
Aug	250,022			1,970,371		
Sep	262,708			2,233,079		
Oct	236,843			2,469,922		
Nov	207,380			2,677,302		
Dec	216,334			2,893,636		

See footnote(s) at end of table.

--continued

**Dairy Products: Production by Product and Month,  
United States, 2005-2006 <sup>1</sup> (continued)**

Product and Month	By Month			Cumulative		
	2005	2006	Change From 2005	2005	2006	Change From 2005
	<i>1,000 Gallons</i>	<i>1,000 Gallons</i>	<i>Percent</i>	<i>1,000 Gallons</i>	<i>1,000 Gallons</i>	<i>Percent</i>
Frozen Yogurt						
Jan	4,299	4,015	-6.6	4,299	4,015	-6.6
Feb	4,457			8,756		
Mar	6,010			14,766		
Apr	5,345			20,111		
May	6,241			26,352		
Jun	6,064			32,416		
Jul	5,600			38,016		
Aug	5,938			43,954		
Sep	5,149			49,103		
Oct	4,690			53,793		
Nov	4,214			58,007		
Dec	4,366			62,373		

<sup>1</sup> December 2005 data revised.

<sup>2</sup> Excludes all modified dry whey products.

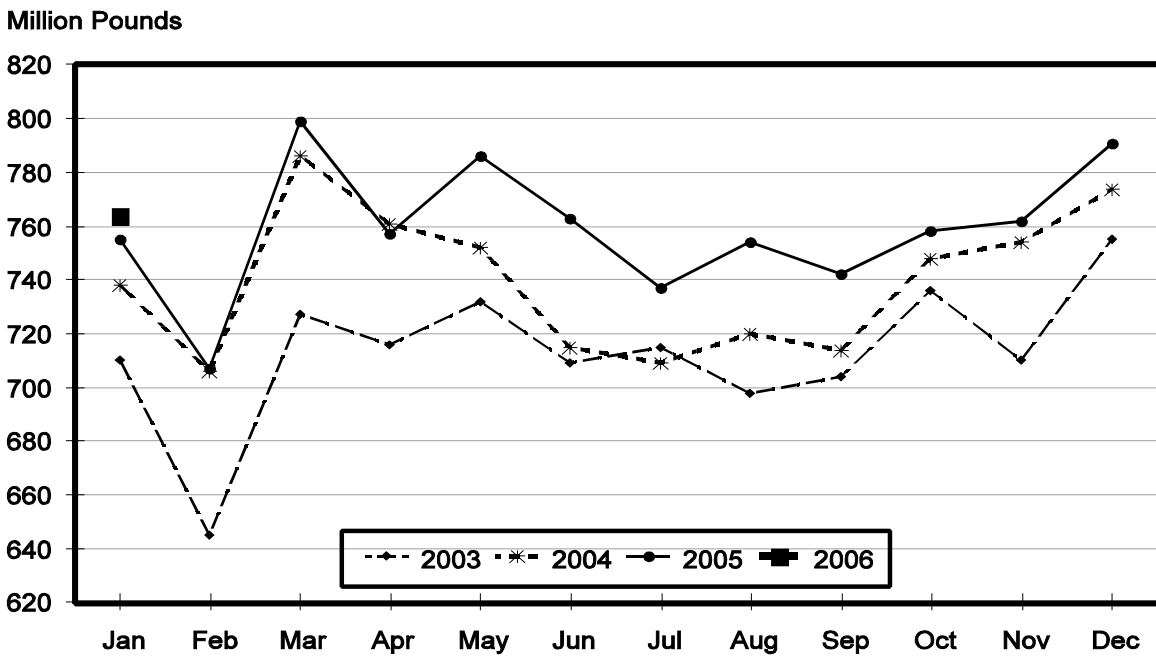
**Total Cheese, Excluding Cottage Cheese: Production by State and United States, January 2005-2006**

State	Jan 2005	Dec <sup>1</sup> 2005	Jan 2006	Change From	
				Jan 2005	Dec 2005
	<i>1,000 Pounds</i>	<i>1,000 Pounds</i>	<i>1,000 Pounds</i>	<i>Percent</i>	<i>Percent</i>
CA	179,708	182,797	179,088	-0.3	-2.0
IL	7,612	7,664	7,353	-3.4	-4.1
IA	13,191	13,698	13,535	2.6	-1.2
MA	46	77	76	65.2	-1.3
MN	52,186	55,023	55,619	6.6	1.1
NY	52,555	58,512	56,338	7.2	-3.7
OH	16,360	17,615	17,555	7.3	-0.3
PA	31,537	34,344	31,547		-8.1
SD	14,511	15,374	14,630	0.8	-4.8
UT	4,443	5,940	5,015	12.9	-15.6
WI	195,560	209,965	201,852	3.2	-3.9
Oth Sts <sup>2</sup>	186,975	190,278	181,651	-2.8	-4.5
US	754,684	791,287	764,259	1.3	-3.4
N Atlantic	100,568	107,069	102,064	1.5	-4.7
S Atlantic	3,583	2,767	3,601	0.5	30.1
E N Central	233,737	249,163	239,604	2.5	-3.8
W N Central	89,434	89,518	89,328	-0.1	-0.2
S Central	7,302	11,409	9,366	28.3	-17.9
West	320,060	331,361	320,296	0.1	-3.3

<sup>1</sup> Revised.

<sup>2</sup> States not shown when fewer than 3 plants reported or individual plant operations could be disclosed. Percent change shown only when comparable States are included in the calculation.

## Total Cheese Production United States



**American Cheese: Production by State and United States, January 2005-2006**

State	Jan 2005	Dec <sup>1</sup> 2005	Jan 2006	Change From	
				Jan 2005	Dec 2005
	<i>1,000 Pounds</i>	<i>1,000 Pounds</i>	<i>1,000 Pounds</i>	<i>Percent</i>	<i>Percent</i>
CA	72,968	70,366	66,659	-8.6	-5.3
IA	10,519	10,605	10,610	0.9	
MN	48,870	51,239	51,337	5.0	0.2
NY	5,876	5,703	5,825	-0.9	2.1
OH	2,963	3,351	3,686	24.4	10.0
OR	9,722	9,003	8,835	-9.1	-1.9
WI	74,800	73,860	73,300	-2.0	-0.8
Oth Sts <sup>2</sup>	96,470	100,897	97,026	0.6	-3.8
US	322,188	325,024	317,278	-1.5	-2.4
Atlantic	12,680	11,361	12,458	-1.8	9.7
E N Central	78,874	78,146	77,995	-1.1	-0.2
W N Central	66,426	69,994	69,423	4.5	-0.8
S Central	4,204	5,261	3,554	-15.5	-32.4
West	160,004	160,262	153,848	-3.8	-4.0

<sup>1</sup> Revised.

<sup>2</sup> States not shown when fewer than 3 plants reported or individual plant operations could be disclosed. Percent change shown only when comparable States are included in the calculation.

**Cheddar Cheese: Production by State and United States, January 2005-2006**

State	Jan 2005	Dec <sup>1</sup> 2005	Jan 2006	Change From	
				Jan 2005	Dec 2005
	<i>1,000 Pounds</i>	<i>1,000 Pounds</i>	<i>1,000 Pounds</i>	<i>Percent</i>	<i>Percent</i>
CA	47,382	42,139	42,831	-9.6	1.6
MN	44,593	46,062	47,188	5.8	2.4
NY	5,799	5,626	5,719	-1.4	1.7
WI	59,400	58,178	58,700	-1.2	0.9
Oth Sts <sup>2</sup>	103,875	106,278	105,633	1.7	-0.6
US	261,049	258,283	260,071	-0.4	0.7
Atlantic	11,783	11,238	12,316	4.5	9.6
E N Cen	61,599	60,257	61,437	-0.3	2.0
W N Cen	56,723	59,243	60,310	6.3	1.8
S Cen	4,203	5,260	3,553	-15.5	-32.5
West	126,741	122,285	122,455	-3.4	0.1

<sup>1</sup> Revised.

<sup>2</sup> States not shown when fewer than 3 plants reported or individual plant operations could be disclosed. Percent change shown only when comparable States are included in the calculation.

**Italian Cheese, Total: Production by State and United States, January 2005-2006**

State	Jan 2005	Dec <sup>1</sup> 2005	Jan 2006	Change From	
				Jan 2005	Dec 2005
	<i>1,000 Pounds</i>	<i>1,000 Pounds</i>	<i>1,000 Pounds</i>	<i>Percent</i>	<i>Percent</i>
CA	88,872	98,104	98,357	10.7	0.3
NY	31,614	32,103	32,586	3.1	1.5
PA	22,470	21,852	22,073	-1.8	1.0
WI	85,115	95,796	91,418	7.4	-4.6
Oth Sts <sup>2</sup>	89,118	86,867	83,471	-6.3	-3.9
US	317,189	334,722	327,905	3.4	-2.0
Atlantic <sup>3</sup>	65,773	62,620	63,824	-3.0	1.9
E N Central	101,027	111,458	105,628	4.6	-5.2
West	135,848	145,884	143,760	5.8	-1.5

<sup>1</sup> Revised.

<sup>2</sup> States not shown when fewer than 3 plants reported or individual plant operations could be disclosed. Percent change shown only when comparable States are included in the calculation.

<sup>3</sup> Region totals may not add to U.S. when compiled regions could not be disclosed.

**Mozzarella Cheese: Production by State and United States, January 2005-2006**

State	Jan 2005	Dec <sup>1</sup> 2005	Jan 2006	Change From	
				Jan 2005	Dec 2005
	<i>1,000 Pounds</i>	<i>1,000 Pounds</i>	<i>1,000 Pounds</i>	<i>Percent</i>	<i>Percent</i>
CA	78,150	89,568	88,000	12.6	-1.8
NY	14,469	15,239	15,705	8.5	3.1
PA	18,984	18,905	19,277	1.5	2.0
WI	63,300	70,900	67,700	7.0	-4.5
Oth Sts <sup>2</sup>	76,496	72,519	68,994	-9.8	-4.9
US	251,399	267,131	259,676	3.3	-2.8
Atlantic <sup>3</sup>	41,848	39,150	40,358	-3.6	3.1
E N Central	76,700	83,608	79,479	3.6	-4.9
West	122,895	134,902	130,787	6.4	-3.1

<sup>1</sup> Revised.

<sup>2</sup> States not shown when fewer than 3 plants reported or individual plant operations could be disclosed. Percent change shown only when comparable States are included in the calculation.

<sup>3</sup> Region totals may not add to U.S. when compiled regions could not be disclosed.

**Butter: Production by State and United States, January 2005-2006**

State	Jan 2005	Dec <sup>1</sup> 2005	Jan 2006	Change From	
				Jan 2005	Dec 2005
	<i>1,000 Pounds</i>	<i>1,000 Pounds</i>	<i>1,000 Pounds</i>	<i>Percent</i>	<i>Percent</i>
CA	34,045	40,829	42,977	26.2	5.3
NY	1,761	1,756	2,058	16.9	17.2
PA	6,509	6,924	7,930	21.8	14.5
WI	38,865	35,424	43,900	13.0	23.9
Oth Sts <sup>2</sup>	47,473	41,234	48,612	2.4	17.9
US	128,653	126,167	145,477	13.1	15.3
N Atlantic <sup>3</sup>	12,795	11,203	13,495	5.5	20.5
E N Central	41,314	38,748	46,344	12.2	19.6
W N Central	7,422	6,104	6,719	-9.5	10.1
West	51,088	58,187	62,992	23.3	8.3

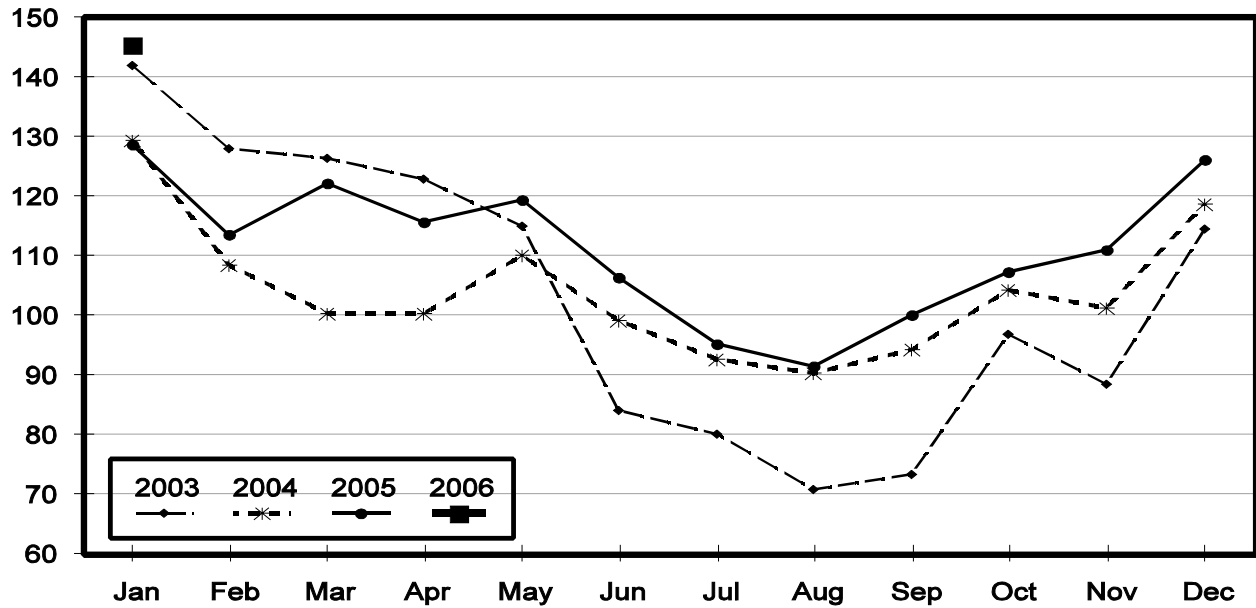
<sup>1</sup> Revised.

<sup>2</sup> States not shown when fewer than 3 plants reported or individual plant operations could be disclosed. Percent change shown only when comparable States are included in the calculation.

<sup>3</sup> Region totals may not add to U.S. when compiled regions could not be disclosed.

## Total Butter Production United States

Million Pounds





**Nonfat Dry Milk, Human: Production by State  
and United States, January 2005-2006**

State	Jan 2005	Dec <sup>1</sup> 2005	Jan 2006	Change From	
				Jan 2005	Dec 2005
	<i>1,000 Pounds</i>	<i>1,000 Pounds</i>	<i>1,000 Pounds</i>	<i>Percent</i>	<i>Percent</i>
CA	39,365	50,175	44,181	12.2	-11.9
PA	5,997	7,420	8,670	44.6	16.8
Oth Sts <sup>2</sup>	48,413	45,530	49,558	2.4	8.8
US	93,775	103,125	102,409	9.2	-0.7
Atlantic	13,885	15,269	18,143	30.7	18.8
E N Central	3,106	5,634	2,118	-31.8	-62.4
W N Central	5,232	4,181	3,990	-23.7	-4.6
S Central	6,259	5,086	6,462	3.2	27.1
West	65,293	72,955	71,696	9.8	-1.7

<sup>1</sup> Revised.

<sup>2</sup> States not shown when fewer than 3 plants reported or individual plant operations could be disclosed. Percent change shown only when comparable States are included in the calculation.

**Dry Whey, Human: Production by State  
and United States, January 2005-2006**

State	Jan 2005	Dec <sup>1</sup> 2005	Jan 2006	Change From	
				Jan 2005	Dec 2005
	<i>1,000 Pounds</i>	<i>1,000 Pounds</i>	<i>1,000 Pounds</i>	<i>Percent</i>	<i>Percent</i>
CA	8,671	8,077	13,827	59.5	71.2
MN	4,036	3,886	3,873	-4.0	-0.3
NY	10,349	10,492	11,212	8.3	6.9
PA	9,046	8,914	9,016	-0.3	1.1
UT	1,696	1,958	1,708	0.7	-12.8
WI	24,179	26,577	26,100	7.9	-1.8
Oth Sts <sup>2</sup>	21,836	20,276	20,910	-4.2	3.1
US	79,813	80,180	86,646	8.6	8.1
Atlantic	19,395	19,406	20,228	4.3	4.2
Central	37,944	39,558	39,377	3.8	-0.5
West	22,474	21,216	27,041	20.3	27.5

<sup>1</sup> Revised.

<sup>2</sup> States not shown when fewer than 3 plants reported or individual plant operations could be disclosed. Percent change shown only when comparable States are included in the calculation.

**Ice Cream, Hard: Production by State and United States, January 2005-2006**

State	Jan 2005	Dec <sup>1</sup> 2005	Jan 2006	Change From	
				Jan 2005	Dec 2005
	<i>1,000 Gallons</i>	<i>1,000 Gallons</i>	<i>1,000 Gallons</i>	<i>Percent</i>	<i>Percent</i>
CA	5,978	6,665	7,808	30.6	17.1
FL	1,700	1,600	1,500	-11.8	-6.3
IL	2,210	2,904	2,225	0.7	-23.4
IN	5,396	5,096	5,527	2.4	8.5
MD	1,446	659	1,181	-18.3	79.2
MA	4,855	3,844	5,023	3.5	30.7
MI	1,327	1,365	1,558	17.4	14.1
MN	2,761	2,829	2,946	6.7	4.1
MO	2,109	1,496	1,895	-10.1	26.7
NY	2,136	1,466	2,063	-3.4	40.7
NC	1,025	1,066	1,258	22.7	18.0
OH	1,622	1,508	1,742	7.4	15.5
OR	769	851	728	-5.3	-14.5
PA	2,807	2,835	1,933	-31.1	-31.8
TN	1,474	959	1,170	-20.6	22.0
TX	3,365	3,561	4,542	35.0	27.5
UT	1,805	1,598	1,505	-16.6	-5.8
Oth Sts <sup>2</sup>	17,655	15,263	16,607	-5.9	8.8
US	60,440	55,565	61,211	1.3	10.2
N Atlantic	12,868	11,405	12,565	-2.4	10.2
S Atlantic	5,121	4,102	4,772	-6.8	16.3
E N Central	11,218	11,398	11,731	4.6	2.9
W N Central	11,091	10,465	10,054	-9.3	-3.9
S Central	8,453	7,534	8,969	6.1	19.0
West	11,689	10,661	13,120	12.2	23.1

<sup>1</sup> Revised.

<sup>2</sup> States not shown when fewer than 3 plants reported or individual plant operations could be disclosed. Percent change shown only when comparable States are included in the calculation.

**Canned Milk and Dry Milk Products: Manufacturers' Shipments,  
and Stocks, January, 2005-2006**

Product	Jan 2005	Dec 2005 <sup>1</sup>	Jan 2006	Change From	
				Jan 2005	Dec 2005
	<b>Manufacturers' Shipments <sup>2</sup></b>				
	<i>1,000 Pounds</i>	<i>1,000 Pounds</i>	<i>1,000 Pounds</i>	<i>Percent</i>	<i>Percent</i>
Nonfat Dry Milk, Human	94,317	74,722	98,148	4.1	31.4
	<b>Manufacturers' Stocks End-of-Month <sup>3</sup></b>				
	<i>1,000 Pounds</i>	<i>1,000 Pounds</i>	<i>1,000 Pounds</i>	<i>Percent</i>	<i>Percent</i>
Canned Evaporated and Condensed Whole Milk	46,327	38,138	36,274	-21.7	-4.9
Nonfat Dry Milk, Human	82,615	113,803	114,274	38.3	0.4
Dry Buttermilk, Total	10,988	12,701	14,722	34.0	15.9

<sup>1</sup> Revised.

<sup>2</sup> For dry products, shipments of bulk goods only.

<sup>3</sup> Stocks held by manufacturers at all points and in transit.

**Procedures and Reliability:** Estimates included in this report are based on data provided each month by manufacturers of these products. In 32 States, the State Departments of Agriculture assist in collection of data, which eliminates duplicate reporting and reduces respondent burden. Data are collected by mail, personal and telephone interviews following the close of each month. There were 1,096 manufacturers that made one or more products in 2004. Each month, reports are generally received from all dairy plants in States with small numbers of plants. In States with large numbers of plants, survey procedures are designed to obtain monthly reports from all large plants and from a sample of small plants. Monthly estimates are based upon returns from about 70 percent of the plants which account for 70 to 90 percent of the total production of major dairy products.

**Revision Policy:** Monthly estimates are subject to revision the month following the preliminary estimates. Annual estimates are published in the "**Dairy Products**" report published each April which includes any revisions made to current and previous year. An attempt is made to get information from all plants for preparing these estimates

Listed below are the commodity specialists in the Livestock Branch of the National Agricultural Statistics Service to contact for additional information.

#### **Information Contacts**

Dan Kerestes, Chief Livestock Branch . . . . .	(202) 720-3570
William Weaver, Head, Livestock Section . . . . .	(202) 720-3570
Bruce Boess - Hogs and Pigs . . . . .	(202) 720-3106
Shawn Clark - Dairy Products . . . . .	(202) 690-3236
Scott Hollis - Sheep , Lambs, Wool and Mohair . . . . .	(202) 720-4751
Mike Miller - Cattle . . . . .	(202) 720-3040
Katy Paulsen - Livestock Slaughter . . . . .	(515) 284-4340
Ann Summa - Milk and Milk Cows . . . . .	(202) 720-3278
Charmaine Wilson - Dairy Products Prices . . . . .	(202) 690-2168

## ACCESS TO REPORTS!!

---

For your convenience, there are several ways to obtain NASS reports, data products, and services:

### INTERNET ACCESS

All NASS reports are available free of charge on the worldwide Internet. For access, connect to the Internet and go to the NASS Home Page at: [www.nass.usda.gov](http://www.nass.usda.gov).

### E-MAIL SUBSCRIPTION

All NASS reports are available by subscription free of charge direct to your e-mail address. Starting with the NASS Home Page at [www.nass.usda.gov](http://www.nass.usda.gov), under the right navigation, *Receive reports by Email*, click on **National** or **State**. Follow the instructions on the screen.

-----

### PRINTED REPORTS OR DATA PRODUCTS

**CALL OUR TOLL-FREE ORDER DESK: 800-999-6779 (U.S. and Canada)**  
**Other areas, please call 703-605-6220      FAX: 703-605-6900**  
**(Visa, MasterCard, check, or money order acceptable for payment.)**

-----

### ASSISTANCE

For **assistance** with general agricultural statistics or further information about NASS or its products or services, contact the **Agricultural Statistics Hotline** at **800-727-9540**, 7:30 a.m. to 4:00 p.m. ET, or e-mail: [nass@nass.usda.gov](mailto:nass@nass.usda.gov).

The U.S. Department of Agriculture (USDA) prohibits discrimination in all its programs and activities on the basis of race, color, national origin, age, disability, and where applicable, sex, marital status, familial status, parental status, religion, sexual orientation, genetic information, political beliefs, reprisal, or because all or part of an individual's income is derived from any public assistance program. (Not all prohibited bases apply to all programs.) Persons with disabilities who require alternative means for communication of program information (Braille, large print, audiotape, etc.) should contact USDA's TARGET Center at (202) 720-2600 (voice and TDD).

To file a complaint of discrimination, write to USDA, Director, Office of Civil Rights, 1400 Independence Avenue, S.W., Washington, D.C. 20250-9410, or call (800) 795-3272 (voice) or (202) 720-6382 (TDD). USDA is an equal opportunity provider and employer.