



# NASS

FACT FINDERS FOR AGRICULTURE  
UNITED STATES DEPARTMENT OF AGRICULTURE

Washington, D.C.

# Dairy Products

---

Released April 4, 2006, by the National Agricultural Statistics Service (NASS), Agricultural Statistics Board, U.S. Department of Agriculture. For information on *Dairy Products* call Shawn Clark at (202) 690-3236, office hours 7:30 a.m. to 4:00 p.m. ET.

## February 2006 Highlights

**Total cheese** output (excluding cottage cheese) was 719 million pounds, 1.6 percent above February 2005 but 7.0 percent below January 2006.

**Italian type cheese** production totaled 307 million pounds, up 1.9 percent February 2005 but 6.4 percent below January 2006.

**American type cheese** production totaled 303 million pounds, 3.3 percent above February 2005 but 6.7 percent below January 2006.

**Butter** production was 134 million pounds, 18.1 percent above February 2005 but 9.0 percent below January 2006.

**Frozen dessert:** (comparisons with February 2005)

Ice cream, Regular (hard) --- 62.9 million gallons, down 2.0 percent.

Ice cream, Lowfat (total) --- 25.1 million gallons, down 10.6 percent.

Ice cream, Nonfat (hard) --- 1.28 million gallons, down 20.8 percent.

Sherbet (hard) --- 4.24 million gallons, up 3.0 percent.

Frozen Yogurt (total) --- 4.62 million gallons, up 3.7 percent.

**Nonfat dry milk for human food:** (compared with February 2005) --- 117 million pounds, up 24.1 percent.

**Dry whey products:** (comparisons with February 2005)

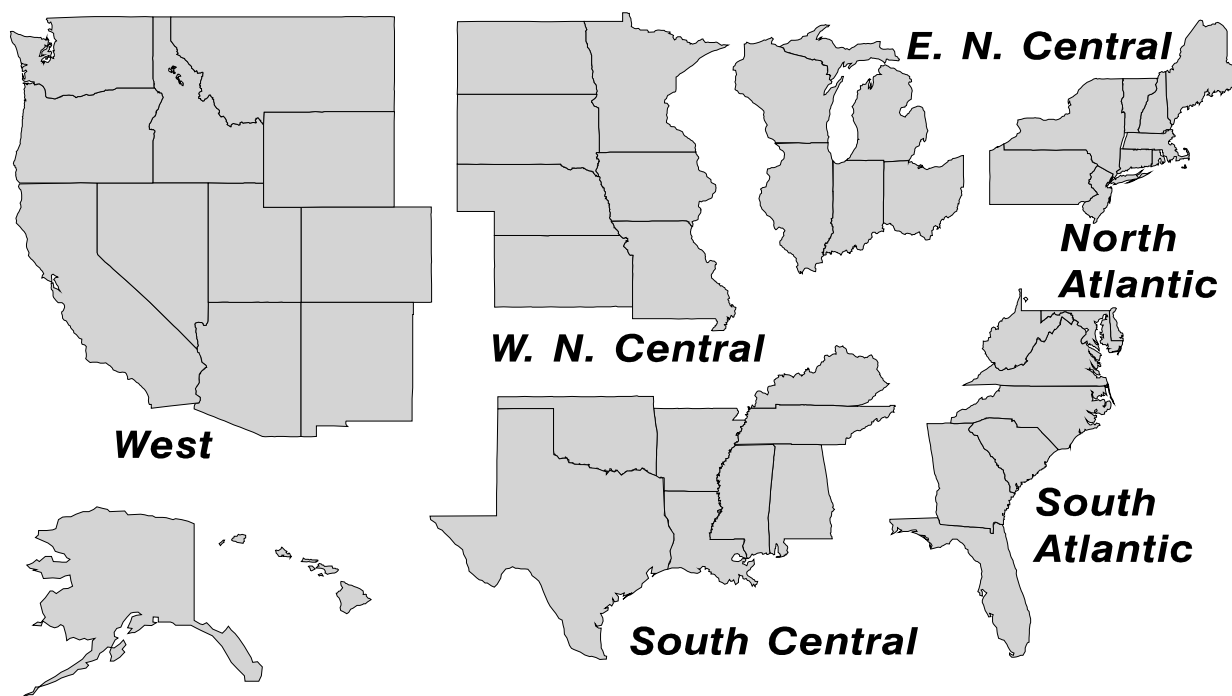
Dry whey, human --- 80.8 million pounds, up 9.1 percent.

Dry whey, animal --- 5.30 million pounds, down 8.5 percent.

Dry whey, total --- 86.1 million pounds, up 7.8 percent.

## U. S. Geographic Regions Dairy Products

State totals are not published when fewer than 3 firms have reported or one firm comprises more than 60 percent of the State total. If we are not able to publish a region for confidentiality reasons, it will be combined with other regions when possible. For example, if North Atlantic can not be published, then it will be combined with South Atlantic to publish Atlantic. The West North Central and East North Central will be combined, if necessary, to form North Central. In the event that neither could be published, they may be combined with South Central to publish Central. Some tables will have only limited regions shown, therefore the regions may not add to the United States total.



## Contents

## Page

Dairy Products: Production by Product, United States .....	1
Whey and Modified Whey Products: Production, Stocks, and Prices, United States .....	2
Dairy Products: Production by Product and Month, United States .....	3
Select Commodities by State and United States .....	10
Canned Milk and Dry Milk Products: Manufacturer's Shipments, Stocks, and Selling Prices .....	15
Procedures and Reliability .....	16

**Dairy Products: Production by Product,  
United States, February, 2005-2006**

Product	Feb 2005	Jan 2006 <sup>1</sup>	Feb 2006	Change From	
				Feb 2005	Jan 2006
	<i>1,000 Pounds</i>	<i>1,000 Pounds</i>	<i>1,000 Pounds</i>	<i>Percent</i>	<i>Percent</i>
Butter	113,492	147,251	133,996	18.1	-9.0
Cheese					
American Types <sup>2</sup>	293,137	324,545	302,764	3.3	-6.7
Cheddar	237,535	265,809	246,926	4.0	-7.1
Swiss	21,902	26,154	24,446	11.6	-6.5
Brick and Muenster	5,235	8,143	7,712	47.3	-5.3
Cream and Neufchatel	51,909	54,300	46,214	-11.0	-14.9
Hispanic	13,203	13,523	13,683	3.6	1.2
Mozzarella	239,290	259,574	242,545	1.4	-6.6
Other Italian Types	62,498	68,741	64,849	3.8	-5.7
Total Italian Types	301,788	328,315	307,394	1.9	-6.4
All Other Types	20,191	17,357	16,363	-19.0	-5.7
Total	707,365	772,337	718,576	1.6	-7.0
Cottage Cheese, Curd <sup>3</sup>	34,546	35,247	33,682	-2.5	-4.4
Cottage Cheese, Cream <sup>4</sup>	27,939	27,785	27,121	-2.9	-2.4
Cottage Cheese, Lowfat <sup>5</sup>	31,520	31,617	30,218	-4.1	-4.4
Canned Evaporated and Condensed Whole Milk	37,449	35,578	36,861	-1.6	3.6
Dry Whole Milk	2,820	2,338	3,213	13.9	37.4
Nonfat Dry Milk, Human	94,334	107,254	117,106	24.1	9.2
Dry Skim Milk, Animal	405	428	397	-2.0	-7.2
Dry Buttermilk	5,393	7,079	6,287	16.6	-11.2
Sour Cream	75,324	81,288	77,966	3.5	-4.1
Yogurt, Plain & Flavored	237,598	252,353	238,249	0.3	-5.6
	<i>1,000 Gallons</i>	<i>1,000 Gallons</i>	<i>1,000 Gallons</i>	<i>Percent</i>	<i>Percent</i>
Frozen Products					
Ice Cream, Regular, Hard	64,240	61,826	62,925	-2.0	1.8
Ice Cream, Lowfat, Hard	8,262	8,249	7,926	-4.1	-3.9
Ice Cream, Lowfat, Soft	19,821	17,195	17,189	-13.3	
Ice Cream, Lowfat, Total	28,083	25,444	25,115	-10.6	-1.3
Ice Cream, Nonfat, Hard	1,619	1,330	1,282	-20.8	-3.6
Sherbet, Hard	4,116	3,893	4,239	3.0	8.9
Water and Juice Ices	4,316	4,861	5,684	31.7	16.9
Frozen Yogurt, Total	4,457	4,131	4,622	3.7	11.9
Regular & Lowfat, Hard	1,401	1,103	1,331	-5.0	20.7
Nonfat, Hard	879	919	962	9.4	4.7
Other Frozen Dairy Products	871	550	444	-49.0	-19.3
Mix for Frozen Products					
Ice Cream Mix	34,755	34,385	34,511	-0.7	0.4
Ice Cream, Lowfat, Mix	15,547	14,056	13,883	-10.7	-1.2
Ice Cream, Nonfat, Mix	1,147	867	850	-25.9	-2.0
Sherbet Mix	2,806	2,994	3,182	13.4	6.3
Yogurt Mix	2,622	2,430	2,719	3.7	11.9

<sup>1</sup> Revised.

<sup>2</sup> Includes Cheddar, Colby, Monterey, and Jack.

<sup>3</sup> Mostly used for processing into cream or lowfat cottage cheese.

<sup>4</sup> Fat content 4 percent or more.

<sup>5</sup> Fat content less than 4 percent.

**Whey and Modified Whey Products: Production, Stocks,  
and Prices, United States, February, 2005-2006**

Product	Feb 2005	Jan 2006 <sup>1</sup>	Feb 2006	Change From	
				Feb 2005	Jan 2006
<b>Production</b>					
	<i>1,000 Pounds</i>	<i>1,000 Pounds</i>	<i>1,000 Pounds</i>	<i>Percent</i>	<i>Percent</i>
Condensed Whey, Solids Content <sup>2</sup>					
Sweet-Type, Human	5,297	8,334	7,779	46.9	-6.7
Dry Whey Products					
Dry Whey, Human	74,088	82,169	80,820	9.1	-1.6
Dry Whey, Animal	5,796	6,074	5,303	-8.5	-12.7
Dry Whey, Total	79,884	88,243	86,123	7.8	-2.4
Reduced Lactose and Minerals					
Human Food	3,559	3,760	3,440	-3.3	-8.5
Animal Feed	3,810	4,061	3,642	-4.4	-10.3
Lactose, Human and Animal	52,686	59,377	51,855	-1.6	-12.7
Whey					
Protein Concentrate					
Human <sup>3</sup>	23,187	30,242	28,311	22.1	-6.4
Animal <sup>3</sup>	3,950	5,038	4,419	11.9	-12.3
Total <sup>3</sup>	27,137	35,280	32,730	20.6	-7.2
25.0-49.9 Percent <sup>4</sup>	19,841	25,633	24,352	22.7	-5.0
50.0-89.9 Percent <sup>4</sup>	7,296	9,647	8,378	14.8	-13.2
Protein Isolates <sup>5</sup>	2,393	2,647	2,716	13.5	2.6
<b>Manufacturers' Stocks End-of-Month <sup>6</sup></b>					
	<i>1,000 Pounds</i>	<i>1,000 Pounds</i>	<i>1,000 Pounds</i>	<i>Percent</i>	<i>Percent</i>
Dry Whey Products					
Dry Whey, Human	35,567	37,528	36,161	1.7	-3.6
Dry Whey, Animal	3,814	3,555	3,653	-4.2	2.8
Dry Whey, Total	39,381	41,083	39,814	1.1	-3.1
Reduced Lactose and Minerals					
Human and Animal <sup>7</sup>	4,832	4,696	5,013	3.7	6.8
Lactose, Human and Animal	65,839	44,055	42,069	-36.1	-4.5
Whey					
Protein Concentrate					
Human <sup>3</sup>	22,359	31,375	26,982	20.7	-14.0
Animal <sup>3</sup>	1,868	2,388	1,946	4.2	-18.5
Total <sup>3</sup>	24,227	33,763	28,928	19.4	-14.3
25.0-49.9 Percent <sup>4</sup>	13,838	20,689	18,025	30.3	-12.9
50.0-89.9 Percent <sup>4</sup>	10,389	13,074	10,903	4.9	-16.6
<b>Manufacturers' Selling Price <sup>8</sup></b>					
	<i>Cents per Pound</i>	<i>Cents per Pound</i>	<i>Cents per Pound</i>	<i>Cents Change</i>	<i>Cents Change</i>
Dry Whey, Animal	22.6	30.6	31.3	8.7	0.7

<sup>1</sup> Revised.

<sup>2</sup> Final marketable product only. Does not include quantity used or shipped to another plant for further processing into dry whey or modified whey products. Does not include sweet-type, animal whey.

<sup>3</sup> Whey Protein Concentrate, 25.0 to 89.9 percent.

<sup>4</sup> Whey Protein Concentrate, Human and Animal.

<sup>5</sup> Whey Protein Isolate, 90.0 percent or greater.

<sup>6</sup> Stocks held by manufacturers at all points and in transit.

<sup>7</sup> Reduced lactose and minerals stocks combined to avoid disclosure of individual operations.

<sup>8</sup> Prices for bulk goods, f.o.b. plant. Average monthly prices reported by firms.

**Dairy Products: Production by Product and Month,  
United States, 2005-2006 <sup>1</sup>**

Product and Month	By Month			Cumulative		
	2005	2006	Change From 2005	2005	2006	Change From 2005
	<i>1,000 Pounds</i>	<i>1,000 Pounds</i>	<i>Percent</i>	<i>1,000 Pounds</i>	<i>1,000 Pounds</i>	<i>Percent</i>
<b>Total Cheese</b>						
Jan	754,684	772,337	2.3	754,684	772,337	2.3
Feb	707,365	718,576	1.6	1,462,049	1,490,913	2.0
Mar	799,304			2,261,353		
Apr	756,908			3,018,261		
May	785,539			3,803,800		
Jun	762,689			4,566,489		
Jul	737,713			5,304,202		
Aug	754,063			6,058,265		
Sep	741,911			6,800,176		
Oct	758,249			7,558,425		
Nov	761,511			8,319,936		
Dec	791,287			9,111,223		
<b>American Cheese</b>						
Jan	322,188	324,545	0.7	322,188	324,545	0.7
Feb	293,137	302,764	3.3	615,325	627,309	1.9
Mar	331,544			946,869		
Apr	328,413			1,275,282		
May	332,821			1,608,103		
Jun	321,604			1,929,707		
Jul	317,037			2,246,744		
Aug	311,809			2,558,553		
Sep	301,737			2,860,290		
Oct	311,497			3,171,787		
Nov	310,171			3,481,958		
Dec	325,024			3,806,982		
<b>Cheddar Cheese</b>						
Jan	261,049	265,809	1.8	261,049	265,809	1.8
Feb	237,535	246,926	4.0	498,584	512,735	2.8
Mar	268,495			767,079		
Apr	263,046			1,030,125		
May	266,543			1,296,668		
Jun	258,215			1,554,883		
Jul	253,813			1,808,696		
Aug	244,731			2,053,427		
Sep	239,514			2,292,941		
Oct	248,285			2,541,226		
Nov	246,224			2,787,450		
Dec	258,283			3,045,733		

See footnote(s) at end of table.

--continued

**Dairy Products: Production by Product and Month,  
United States, 2005-2006 <sup>1</sup> (continued)**

Product and Month	By Month			Cumulative		
	2005	2006	Change From 2005	2005	2006	Change From 2005
	<i>1,000 Pounds</i>	<i>1,000 Pounds</i>	<i>Percent</i>	<i>1,000 Pounds</i>	<i>1,000 Pounds</i>	<i>Percent</i>
Italian Cheese						
Jan	317,189	328,315	3.5	317,189	328,315	3.5
Feb	301,788	307,394	1.9	618,977	635,709	2.7
Mar	340,532			959,509		
Apr	313,394			1,272,903		
May	329,268			1,602,171		
Jun	320,911			1,923,082		
Jul	300,971			2,224,053		
Aug	310,591			2,534,644		
Sep	307,440			2,842,084		
Oct	310,769			3,152,853		
Nov	319,271			3,472,124		
Dec	334,722			3,806,846		
Mozzarella						
Jan	251,399	259,574	3.3	251,399	259,574	3.3
Feb	239,290	242,545	1.4	490,689	502,119	2.3
Mar	269,487			760,176		
Apr	248,480			1,008,656		
May	262,483			1,271,139		
Jun	254,662			1,525,801		
Jul	242,877			1,768,678		
Aug	243,552			2,012,230		
Sep	242,011			2,254,241		
Oct	243,027			2,497,268		
Nov	252,049			2,749,317		
Dec	267,131			3,016,448		
Other Italian						
Jan	65,790	68,741	4.5	65,790	68,741	4.5
Feb	62,498	64,849	3.8	128,288	133,590	4.1
Mar	71,045			199,333		
Apr	64,914			264,247		
May	66,785			331,032		
Jun	66,249			397,281		
Jul	58,094			455,375		
Aug	67,039			522,414		
Sep	65,429			587,843		
Oct	67,742			655,585		
Nov	67,222			722,807		
Dec	67,591			790,398		

See footnote(s) at end of table.

--continued

**Dairy Products: Production by Product and Month,  
United States, 2005-2006 <sup>1</sup> (continued)**

Product and Month	By Month			Cumulative		
	2005	2006	Change From 2005	2005	2006	Change From 2005
	<i>1,000 Pounds</i>	<i>1,000 Pounds</i>	<i>Percent</i>	<i>1,000 Pounds</i>	<i>1,000 Pounds</i>	<i>Percent</i>
Butter						
Jan	128,653	147,251	14.5	128,653	147,251	14.5
Feb	113,492	133,996	18.1	242,145	281,247	16.1
Mar	122,135			364,280		
Apr	115,659			479,939		
May	119,508			599,447		
Jun	106,360			705,807		
Jul	95,310			801,117		
Aug	91,603			892,720		
Sep	100,095			992,815		
Oct	107,237			1,100,052		
Nov	111,035			1,211,087		
Dec	126,167			1,337,254		
Nonfat Dry Milk, Human						
Jan	93,775	107,254	14.4	93,775	107,254	14.4
Feb	94,334	117,106	24.1	188,109	224,360	19.3
Mar	109,049			297,158		
Apr	111,223			408,381		
May	124,105			532,486		
Jun	124,642			657,128		
Jul	110,667			767,795		
Aug	86,870			854,665		
Sep	71,053			925,718		
Oct	73,707			999,425		
Nov	88,943			1,088,368		
Dec	103,125			1,191,493		
Total Dry Whey <sup>2</sup>						
Jan	86,194	88,243	2.4	86,194	88,243	2.4
Feb	79,884	86,123	7.8	166,078	174,366	5.0
Mar	91,544			257,622		
Apr	90,958			348,580		
May	93,158			441,738		
Jun	89,588			531,326		
Jul	89,261			620,587		
Aug	87,508			708,095		
Sep	83,938			792,033		
Oct	82,139			874,172		
Nov	85,149			959,321		
Dec	86,297			1,045,618		

See footnote(s) at end of table.

--continued



**Dairy Products: Production by Product and Month,  
United States, 2005-2006 <sup>1</sup> (continued)**

Product and Month	By Month			Cumulative		
	2005	2006	Change From 2005	2005	2006	Change From 2005
	<i>1,000 Pounds</i>	<i>1,000 Pounds</i>	<i>Percent</i>	<i>1,000 Pounds</i>	<i>1,000 Pounds</i>	<i>Percent</i>
Cream Cottage Cheese						
Jan	29,496	27,785	-5.8	29,496	27,785	-5.8
Feb	27,939	27,121	-2.9	57,435	54,906	-4.4
Mar	32,532			89,967		
Apr	30,437			120,404		
May	31,454			151,858		
Jun	31,410			183,268		
Jul	31,935			215,203		
Aug	33,971			249,174		
Sep	32,920			282,094		
Oct	30,632			312,726		
Nov	28,883			341,609		
Dec	26,119			367,728		
Lowfat Cottage Cheese						
Jan	29,468	31,617	7.3	29,468	31,617	7.3
Feb	31,520	30,218	-4.1	60,988	61,835	1.4
Mar	33,230			94,218		
Apr	32,589			126,807		
May	34,758			161,565		
Jun	33,889			195,454		
Jul	31,966			227,420		
Aug	36,362			263,782		
Sep	34,363			298,145		
Oct	33,202			331,347		
Nov	31,318			362,665		
Dec	28,468			391,133		
	<i>1,000 Gallons</i>	<i>1,000 Gallons</i>	<i>Percent</i>	<i>1,000 Gallons</i>	<i>1,000 Gallons</i>	<i>Percent</i>
Ice Cream, Regular, Hard						
Jan	60,440	61,826	2.3	60,440	61,826	2.3
Feb	64,240	62,925	-2.0	124,680	124,751	0.1
Mar	78,232			202,912		
Apr	77,426			280,338		
May	79,510			359,848		
Jun	90,806			450,654		
Jul	87,648			538,302		
Aug	89,329			627,631		
Sep	72,571			700,202		
Oct	68,674			768,876		
Nov	61,819			830,695		
Dec	55,565			886,260		

See footnote(s) at end of table.

--continued

**Dairy Products: Production by Product and Month,  
United States, 2005-2006 <sup>1</sup> (continued)**

Product and Month	By Month			Cumulative		
	2005	2006	Change From 2005	2005	2006	Change From 2005
	<i>1,000 Gallons</i>	<i>1,000 Gallons</i>	<i>Percent</i>	<i>1,000 Gallons</i>	<i>1,000 Gallons</i>	<i>Percent</i>
<b>Ice Cream, Lowfat</b>						
Jan	27,079	25,444	-6.0	27,079	25,444	-6.0
Feb	28,083	25,115	-10.6	55,162	50,559	-8.3
Mar	36,580			91,742		
Apr	35,701			127,443		
May	35,568			163,011		
Jun	41,736			204,747		
Jul	39,414			244,161		
Aug	40,406			284,567		
Sep	32,540			317,107		
Oct	29,648			346,755		
Nov	26,242			372,997		
Dec	23,043			396,040		
<b>Ice Cream, NF, Hard</b>						
Jan	1,164	1,330	14.3	1,164	1,330	14.3
Feb	1,619	1,282	-20.8	2,783	2,612	-6.1
Mar	1,670			4,453		
Apr	1,642			6,095		
May	1,745			7,840		
Jun	1,855			9,695		
Jul	1,966			11,661		
Aug	1,800			13,461		
Sep	1,501			14,962		
Oct	1,471			16,433		
Nov	1,197			17,630		
Dec	1,182			18,812		
<b>Sherbet, Hard</b>						
Jan	4,194	3,893	-7.2	4,194	3,893	-7.2
Feb	4,116	4,239	3.0	8,310	8,132	-2.1
Mar	4,915			13,225		
Apr	5,047			18,272		
May	5,022			23,294		
Jun	5,710			29,004		
Jul	5,408			34,412		
Aug	5,685			40,097		
Sep	4,938			45,035		
Oct	4,305			49,340		
Nov	3,481			52,821		
Dec	3,413			56,234		

See footnote(s) at end of table.

--continued

**Dairy Products: Production by Product and Month,  
United States, 2005-2006 (continued)**

Product and Month	By Month			Cumulative		
	2005	2006	Change From 2005	2005	2006	Change From 2005
	<i>1,000 Pounds</i>	<i>1,000 Pounds</i>	<i>Percent</i>	<i>1,000 Pounds</i>	<i>1,000 Pounds</i>	<i>Percent</i>
Sour Cream						
Jan	76,883	81,288	5.7	76,883	81,288	5.7
Feb	75,324	77,966	3.5	152,207	159,254	4.6
Mar	87,189			239,396		
Apr	72,041			311,437		
May	85,130			396,567		
Jun	83,642			480,209		
Jul	77,890			558,099		
Aug	92,610			650,709		
Sep	79,014			729,723		
Oct	89,357			819,080		
Nov	107,252			926,332		
Dec	97,413			1,023,745		

See footnote(s) at end of table.

--continued

**Dairy Products: Production by Product and Month,  
United States, 2005-2006 (continued)**

Product and Month	By Month			Cumulative		
	2005	2006	Change From 2005	2005	2006	Change From 2005
	<i>1,000 Pounds</i>	<i>1,000 Pounds</i>	<i>Percent</i>	<i>1,000 Pounds</i>	<i>1,000 Pounds</i>	<i>Percent</i>
Yogurt						
Jan	223,206	252,353	13.1	223,206	252,353	13.1
Feb	237,598	238,249	0.3	460,804	490,602	6.5
Mar	265,285			726,089		
Apr	251,984			978,073		
May	262,207			1,240,280		
Jun	252,992			1,493,272		
Jul	227,077			1,720,349		
Aug	250,022			1,970,371		
Sep	262,708			2,233,079		
Oct	236,843			2,469,922		
Nov	207,380			2,677,302		
Dec	216,334			2,893,636		

See footnote(s) at end of table.

--continued

**Dairy Products: Production by Product and Month,  
United States, 2005-2006 <sup>1</sup> (continued)**

Product and Month	By Month			Cumulative		
	2005	2006	Change From 2005	2005	2006	Change From 2005
	<i>1,000 Gallons</i>	<i>1,000 Gallons</i>	<i>Percent</i>	<i>1,000 Gallons</i>	<i>1,000 Gallons</i>	<i>Percent</i>
Frozen Yogurt						
Jan	4,299	4,131	-3.9	4,299	4,131	-3.9
Feb	4,457	4,622	3.7	8,756	8,753	
Mar	6,010			14,766		
Apr	5,345			20,111		
May	6,241			26,352		
Jun	6,064			32,416		
Jul	5,600			38,016		
Aug	5,938			43,954		
Sep	5,149			49,103		
Oct	4,690			53,793		
Nov	4,214			58,007		
Dec	4,366			62,373		

<sup>1</sup> January 2006 data revised.

<sup>2</sup> Excludes all modified dry whey products.

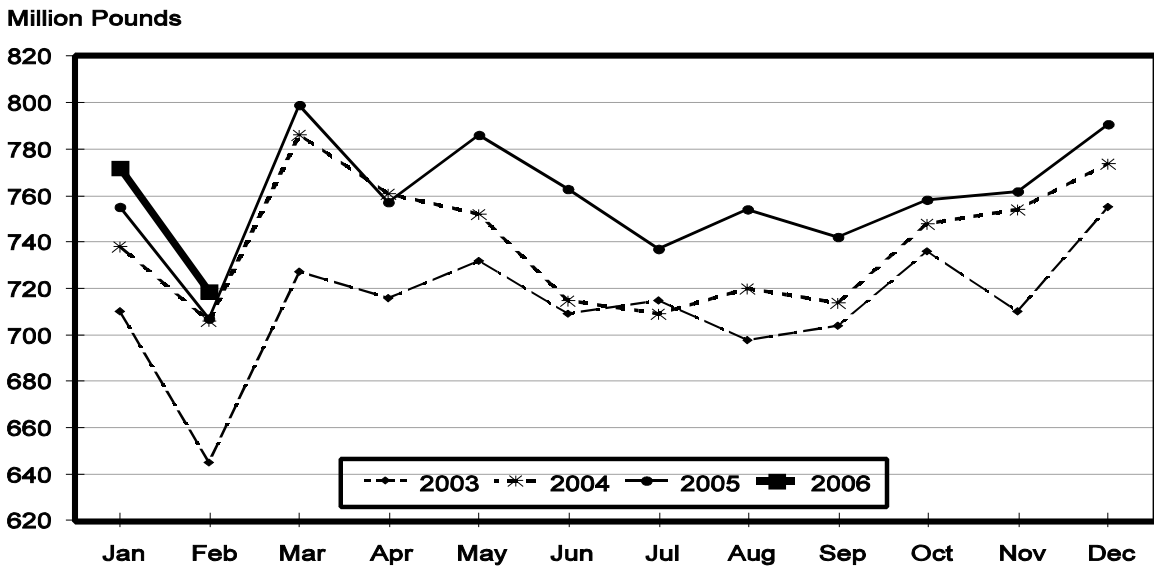
**Total Cheese, Excluding Cottage Cheese: Production by State and United States, February 2005-2006**

State	Feb 2005	Jan <sup>1</sup> 2006	Feb 2006	Change From	
				Feb 2005	Jan 2006
	<i>1,000 Pounds</i>	<i>1,000 Pounds</i>	<i>1,000 Pounds</i>	<i>Percent</i>	<i>Percent</i>
CA	162,055	179,092	163,647	1.0	-8.6
ID	59,233	65,576	63,376	7.0	-3.4
IL	7,282	7,353	7,269	-0.2	-1.1
IA	12,061	13,605	12,887	6.8	-5.3
MN	49,594	55,620	51,356	3.6	-7.7
NY	55,325	56,761	54,271	-1.9	-4.4
OH	15,318	17,555	15,989	4.4	-8.9
PA	29,240	31,547	28,893	-1.2	-8.4
SD	13,057	14,630	14,519	11.2	-0.8
UT	4,349	5,015	4,771	9.7	-4.9
WI	183,600	203,098	186,756	1.7	-8.0
Oth Sts <sup>2</sup>	116,251	122,485	114,842	-1.2	-6.2
US	707,365	772,337	718,576	1.6	-7.0
N Atl	97,632	102,298	96,223	-1.4	-5.9
S Atl	3,092	3,601	2,927	-5.3	-18.7
E N Cen	220,148	240,850	222,296	1.0	-7.7
W N Cen	83,538	89,399	83,385	-0.2	-6.7
S Cen	7,162	9,366	7,184	0.3	-23.3
West	295,793	326,823	306,561	3.6	-6.2

<sup>1</sup> Revised.

<sup>2</sup> States not shown when fewer than 3 plants reported or individual plant operations could be disclosed. Percent change shown only when comparable States are included in the calculation.

**Total Cheese Production United States**



**American Cheese: Production by State and United States, February 2005-2006**

State	Feb 2005	Jan <sup>1</sup> 2006	Feb 2006	Change From	
				Feb 2005	Jan 2006
	<i>1,000 Pounds</i>	<i>1,000 Pounds</i>	<i>1,000 Pounds</i>	<i>Percent</i>	<i>Percent</i>
CA	65,694	66,659	63,108	-3.9	-5.3
ID	42,255	49,324	45,459	7.6	-7.8
IA	9,709	10,657	9,941	2.4	-6.7
MN	46,735	51,337	47,201	1.0	-8.1
NY	5,070	5,825	5,217	2.9	-10.4
OH	2,655	3,686	3,279	23.5	-11.0
OR	8,875	8,843	8,646	-2.6	-2.2
WI	68,454	74,245	66,600	-2.7	-10.3
Oth Sts <sup>2</sup>	43,690	53,969	53,313	22.0	-1.2
US	293,137	324,545	302,764	3.3	-6.7
Atlantic	10,484	12,225	11,253	7.3	-8.0
E N Cen	72,007	78,940	70,582	-2.0	-10.6
W N Cen	62,925	69,470	64,233	2.1	-7.5
S Cen	3,855	3,554	3,392	-12.0	-4.6
West	143,866	160,356	153,304	6.6	-4.4

<sup>1</sup> Revised.

<sup>2</sup> States not shown when fewer than 3 plants reported or individual plant operations could be disclosed. Percent change shown only when comparable States are included in the calculation.

**Cheddar Cheese: Production by State and United States, February 2005-2006**

State	Feb 2005	Jan <sup>1</sup> 2006	Feb 2006	Change From	
				Feb 2005	Jan 2006
	<i>1,000 Pounds</i>	<i>1,000 Pounds</i>	<i>1,000 Pounds</i>	<i>Percent</i>	<i>Percent</i>
CA	43,098	42,831	40,345	-6.4	-5.8
ID	39,032	45,661	43,115	10.5	-5.6
IA	6,511	7,317	6,778	4.1	-7.4
MN	42,113	47,188	42,279	0.4	-10.4
NY	4,961	5,719	5,109	3.0	-10.7
OH	1,716	2,692	2,423	41.2	-10.0
WI	54,526	59,554	53,000	-2.8	-11.0
Oth Sts <sup>2</sup>	45,578	54,847	53,877	18.2	-1.8
US	237,535	265,809	246,926	4.0	-7.1
Atlantic	9,896	11,754	10,948	10.6	-6.9
E N Cen	56,242	62,291	55,446	-1.4	-11.0
W N Cen	53,587	60,552	53,644	0.1	-11.4
S Cen	3,854	3,553	3,391	-12.0	-4.6
West	113,956	127,659	123,497	8.4	-3.3

<sup>1</sup> Revised.

<sup>2</sup> States not shown when fewer than 3 plants reported or individual plant operations could be disclosed. Percent change shown only when comparable States are included in the calculation.

**Italian Cheese, Total: Production by State and  
United States, February 2005-2006**

State	Feb 2005	Jan <sup>1</sup> 2006	Feb 2006	Change From	
				Feb 2005	Jan 2006
	<i>1,000 Pounds</i>	<i>1,000 Pounds</i>	<i>1,000 Pounds</i>	<i>Percent</i>	<i>Percent</i>
CA	81,929	98,357	87,632	7.0	-10.9
ID	12,012	10,311	13,299	10.7	29.0
NY	32,123	33,050	29,601	-7.9	-10.4
PA	20,224	22,073	20,867	3.2	-5.5
WI	81,467	91,321	87,371	7.2	-4.3
Oth Sts <sup>2</sup>	74,033	73,203	68,624	-7.3	-6.3
US <sup>3</sup>	301,788	328,315	307,394	1.9	-6.4
Atlantic	61,775	64,331	58,574	-5.2	-8.9
E N Cen	97,266	105,531	101,085	3.9	-4.2
West	130,024	143,760	133,220	2.5	-7.3

<sup>1</sup> Revised.

<sup>2</sup> States not shown when fewer than 3 plants reported or individual plant operations could be disclosed. Percent change shown only when comparable States are included in the calculation.

<sup>3</sup> Region totals may not add to U.S. when compiled regions could not be disclosed.

**Mozzarella Cheese: Production by State and United States, February 2005-2006**

State	Feb 2005	Jan <sup>1</sup> 2006	Feb 2006	Change From	
				Feb 2005	Jan 2006
	<i>1,000 Pounds</i>	<i>1,000 Pounds</i>	<i>1,000 Pounds</i>	<i>Percent</i>	<i>Percent</i>
CA	72,856	88,000	76,779	5.4	-12.8
ID	10,521	8,413	11,809	12.2	40.4
NY	13,819	15,705	14,440	4.5	-8.1
PA	17,003	19,277	18,388	8.1	-4.6
WI	60,915	67,537	64,200	5.4	-4.9
Oth Sts <sup>2</sup>	64,176	60,642	56,929	-11.3	-6.1
US <sup>3</sup>	239,290	259,574	242,545	1.4	-6.6
Atlantic	37,702	40,419	38,104	1.1	-5.7
E N Cen	74,170	79,316	75,566	1.9	-4.7
West	118,632	130,787	120,131	1.3	-8.1

<sup>1</sup> Revised.

<sup>2</sup> States not shown when fewer than 3 plants reported or individual plant operations could be disclosed. Percent change shown only when comparable States are included in the calculation.

<sup>3</sup> Region totals may not add to U.S. when compiled regions could not be disclosed.

**Butter: Production by State and United States, February 2005-2006**

State	Feb 2005	Jan <sup>1</sup> 2006	Feb 2006	Change From	
				Feb 2005	Jan 2006
	<i>1,000 Pounds</i>	<i>1,000 Pounds</i>	<i>1,000 Pounds</i>	<i>Percent</i>	<i>Percent</i>
CA	31,365	42,977	41,480	32.2	-3.5
NY	1,688	2,061	1,822	7.9	-11.6
PA	6,464	7,930	5,974	-7.6	-24.7
WI	30,393	44,351	35,500	16.8	-20.0
Oth Sts <sup>2</sup>	43,582	49,932	49,220	12.9	-1.4
US <sup>3</sup>	113,492	147,251	133,996	18.1	-9.0
N Atl	11,804	13,498	10,874	-7.9	-19.4
E N Cen	32,757	47,303	40,088	22.4	-15.3
W N Cen	7,032	7,462	10,118	43.9	35.6
West	47,566	62,992	58,807	23.6	-6.6

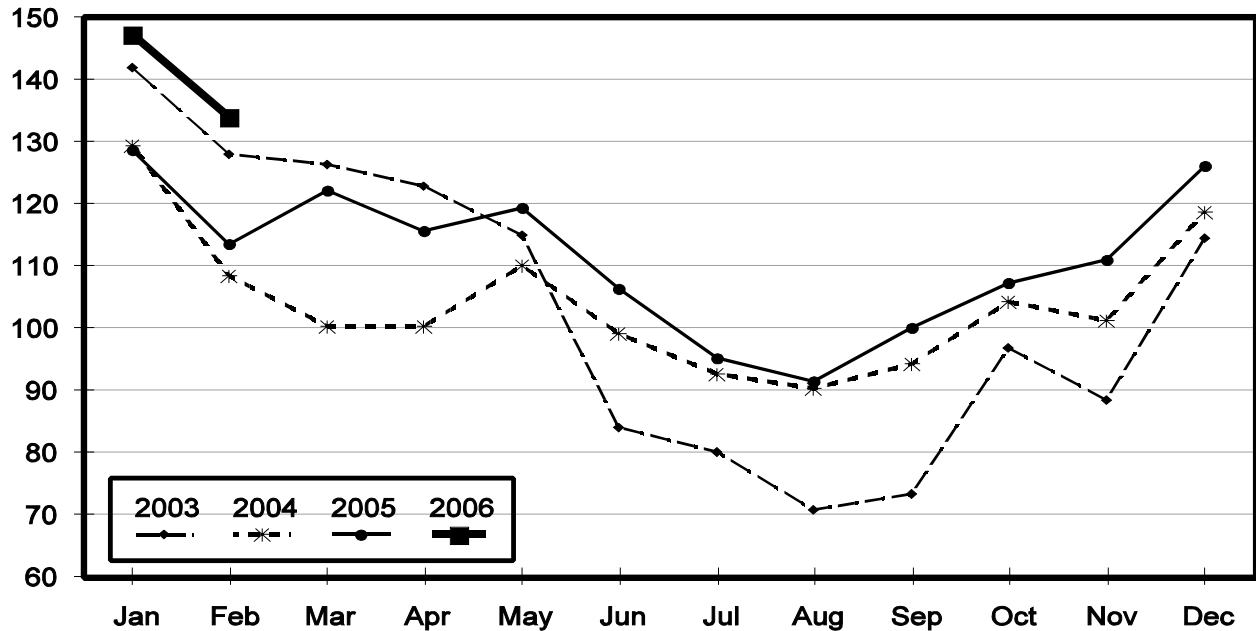
<sup>1</sup> Revised.

<sup>2</sup> States not shown when fewer than 3 plants reported or individual plant operations could be disclosed. Percent change shown only when comparable States are included in the calculation.

<sup>3</sup> Region totals may not add to U.S. when compiled regions could not be disclosed.

## Total Butter Production United States

Million Pounds





**Nonfat Dry Milk, Human: Production by State  
and United States, February 2005-2006**

State	Feb 2005	Jan <sup>1</sup> 2006	Feb 2006	Change From	
				Feb 2005	Jan 2006
	<i>1,000 Pounds</i>	<i>1,000 Pounds</i>	<i>1,000 Pounds</i>	<i>Percent</i>	<i>Percent</i>
CA	41,554	48,661	57,709	38.9	18.6
PA	6,903	8,670	8,170	18.4	-5.8
Oth Sts <sup>2</sup>	45,877	49,923	51,227	11.7	2.6
US	94,334	107,254	117,106	24.1	9.2
Atlantic	14,455	18,143	16,560	14.6	-8.7
E N Cen	3,289	2,118	4,629	40.7	118.6
W N Cen	5,219	3,990	4,560	-12.6	14.3
S Cen	6,928	6,513	6,690	-3.4	2.7
West	64,443	76,490	84,667	31.4	10.7

<sup>1</sup> Revised.

<sup>2</sup> States not shown when fewer than 3 plants reported or individual plant operations could be disclosed. Percent change shown only when comparable States are included in the calculation.

**Dry Whey, Human: Production by State  
and United States, February 2005-2006**

State	Feb 2005	Jan <sup>1</sup> 2006	Feb 2006	Change From	
				Feb 2005	Jan 2006
	<i>1,000 Pounds</i>	<i>1,000 Pounds</i>	<i>1,000 Pounds</i>	<i>Percent</i>	<i>Percent</i>
CA	8,953	9,347	8,757	-2.2	-6.3
MN	3,777	3,873	3,455	-8.5	-10.8
NY	9,460	11,212	10,042	6.2	-10.4
PA	7,640	9,016	8,819	15.4	-2.2
UT	1,179	1,708	1,681	42.6	-1.6
WI	23,425	26,103	25,200	7.6	-3.5
Oth Sts <sup>2</sup>	19,654	20,910	22,866	16.3	9.4
US	74,088	82,169	80,820	9.1	-1.6
Atlantic	17,100	20,228	18,861	10.3	-6.8
Central	35,652	39,380	37,680	5.7	-4.3
West	21,336	22,561	24,279	13.8	7.6

<sup>1</sup> Revised.

<sup>2</sup> States not shown when fewer than 3 plants reported or individual plant operations could be disclosed. Percent change shown only when comparable States are included in the calculation.

**Ice Cream, Hard: Production by State and United States, February 2005-2006**

State	Feb 2005	Jan <sup>1</sup> 2006	Feb 2006	Change From	
				Feb 2005	Jan 2006
	<i>1,000 Gallons</i>	<i>1,000 Gallons</i>	<i>1,000 Gallons</i>	<i>Percent</i>	<i>Percent</i>
CA	8,032	7,867	8,649	7.7	9.9
FL	1,800	1,750	1,700	-5.6	-2.9
IN	6,435	5,527	5,372	-16.5	-2.8
MD	1,488	1,181	1,406	-5.5	19.1
MA	3,399	5,024	4,039	18.8	-19.6
MN	3,169	2,946	2,701	-14.8	-8.3
MO	1,705	1,895	2,255	32.3	19.0
NY	2,071	2,063	2,045	-1.3	-0.9
OH	1,989	1,742	1,677	-15.7	-3.7
OR	803	728	932	16.1	28.0
PA	2,980	1,933	2,314	-22.3	19.7
TN	1,141	1,170	1,111	-2.6	-5.0
TX	3,243	4,542	4,285	32.1	-5.7
UT	2,019	1,505	1,859	-7.9	23.5
Oth Sts <sup>2</sup>	23,966	21,953	22,580	-5.8	2.9
US	64,240	61,826	62,925	-2.0	1.8
N Atl	11,922	12,656	11,330	-5.0	-10.5
S Atl	5,885	5,195	5,692	-3.3	9.6
E N Cen	13,149	11,687	11,438	-13.0	-2.1
W N Cen	11,750	10,073	11,393	-3.0	13.1
S Cen	7,499	9,013	8,656	15.4	-4.0
West	14,035	13,202	14,416	2.7	9.2

<sup>1</sup> Revised.

<sup>2</sup> States not shown when fewer than 3 plants reported or individual plant operations could be disclosed. Percent change shown only when comparable States are included in the calculation.

**Canned Milk and Dry Milk Products: Manufacturers' Shipments,  
and Stocks, February, 2005-2006**

Product	Feb 2005	Jan 2006 <sup>1</sup>	Feb 2006	Change From	
				Feb 2005	Jan 2006
	<b>Manufacturers' Shipments <sup>2</sup></b>				
	<i>1,000 Pounds</i>	<i>1,000 Pounds</i>	<i>1,000 Pounds</i>	<i>Percent</i>	<i>Percent</i>
Nonfat Dry Milk, Human	87,606	98,273	103,761	18.4	5.6
	<b>Manufacturers' Stocks End-of-Month <sup>3</sup></b>				
	<i>1,000 Pounds</i>	<i>1,000 Pounds</i>	<i>1,000 Pounds</i>	<i>Percent</i>	<i>Percent</i>
Canned Evaporated and Condensed Whole Milk	40,379	41,517	54,312	34.5	30.8
Nonfat Dry Milk, Human	78,869	113,966	119,506	51.5	4.9
Dry Buttermilk, Total	6,869	14,698	17,008	147.6	15.7

<sup>1</sup> Revised.

<sup>2</sup> For dry products, shipments of bulk goods only.

<sup>3</sup> Stocks held by manufacturers at all points and in transit.

**Procedures and Reliability:** Estimates included in this report are based on data provided each month by manufacturers of these products. In 32 States, the State Departments of Agriculture assist in collection of data, which eliminates duplicate reporting and reduces respondent burden. Data are collected by mail, personal and telephone interviews following the close of each month. There were 1,096 manufacturers that made one or more products in 2004. Each month, reports are generally received from all dairy plants in States with small numbers of plants. In States with large numbers of plants, survey procedures are designed to obtain monthly reports from all large plants and from a sample of small plants. Monthly estimates are based upon returns from about 70 percent of the plants which account for 70 to 90 percent of the total production of major dairy products.

**Revision Policy:** Monthly estimates are subject to revision the month following the preliminary estimates. Annual estimates are published in the "**Dairy Products**" report published each April which includes any revisions made to current and previous year. An attempt is made to get information from all plants for preparing these estimates

Listed below are the commodity specialists in the Livestock Branch of the National Agricultural Statistics Service to contact for additional information.

#### **Information Contacts**

Dan Kerestes, Chief Livestock Branch . . . . .	(202) 720-3570
William Weaver, Head, Livestock Section . . . . .	(202) 720-3570
Bruce Boess - Hogs and Pigs . . . . .	(202) 720-3106
Shawn Clark - Dairy Products . . . . .	(202) 690-3236
Scott Hollis - Sheep , Lambs, Wool and Mohair . . . . .	(202) 720-4751
Mike Miller - Cattle . . . . .	(202) 720-3040
Katy Paulsen - Livestock Slaughter . . . . .	(515) 284-4340
Ann Summa - Milk and Milk Cows . . . . .	(202) 720-3278
Charmaine Wilson - Dairy Products Prices . . . . .	(202) 690-2168

## ACCESS TO REPORTS!!

---

For your convenience, there are several ways to obtain NASS reports, data products, and services:

### INTERNET ACCESS

All NASS reports are available free of charge on the worldwide Internet. For access, connect to the Internet and go to the NASS Home Page at: [www.nass.usda.gov](http://www.nass.usda.gov).

### E-MAIL SUBSCRIPTION

All NASS reports are available by subscription free of charge direct to your e-mail address. Starting with the NASS Home Page at [www.nass.usda.gov](http://www.nass.usda.gov), under the right navigation, *Receive reports by Email*, click on **National** or **State**. Follow the instructions on the screen.

-----

### PRINTED REPORTS OR DATA PRODUCTS

**CALL OUR TOLL-FREE ORDER DESK: 800-999-6779 (U.S. and Canada)**  
**Other areas, please call 703-605-6220      FAX: 703-605-6900**  
**(Visa, MasterCard, check, or money order acceptable for payment.)**

-----

### ASSISTANCE

For **assistance** with general agricultural statistics or further information about NASS or its products or services, contact the **Agricultural Statistics Hotline** at **800-727-9540**, 7:30 a.m. to 4:00 p.m. ET, or e-mail: [nass@nass.usda.gov](mailto:nass@nass.usda.gov).

The U.S. Department of Agriculture (USDA) prohibits discrimination in all its programs and activities on the basis of race, color, national origin, age, disability, and where applicable, sex, marital status, familial status, parental status, religion, sexual orientation, genetic information, political beliefs, reprisal, or because all or part of an individual's income is derived from any public assistance program. (Not all prohibited bases apply to all programs.) Persons with disabilities who require alternative means for communication of program information (Braille, large print, audiotape, etc.) should contact USDA's TARGET Center at (202) 720-2600 (voice and TDD).

To file a complaint of discrimination, write to USDA, Director, Office of Civil Rights, 1400 Independence Avenue, S.W., Washington, D.C. 20250-9410, or call (800) 795-3272 (voice) or (202) 720-6382 (TDD). USDA is an equal opportunity provider and employer.