



NASS

FACT FINDERS FOR AGRICULTURE
UNITED STATES DEPARTMENT OF AGRICULTURE

Washington, D.C.

Dairy Products

Released May 5, 2006, by the National Agricultural Statistics Service (NASS), Agricultural Statistics Board, U.S. Department of Agriculture. For information on *Dairy Products* call Shawn Clark at (202) 690-3236, office hours 7:30 a.m. to 4:00 p.m. ET.

March 2006 Highlights

Total cheese output (excluding cottage cheese) was 810 million pounds, 1.5 percent above March 2005 and 12.3 percent above February 2006.

Italian type cheese production totaled 343 million pounds, up 1.4 percent March 2005 and 11.6 percent above February 2006.

American type cheese production totaled 338 million pounds, 2.1 percent above March 2005 and 11.2 percent above February 2006.

Butter production was 142 million pounds, 16.0 percent above March 2005 and 3.7 percent above February 2006.

Frozen dessert: (comparisons with March 2005)

Ice cream, Regular (hard) --- 77.9 million gallons, down 1.1 percent.

Ice cream, Lowfat (total) --- 32.4 million gallons, down 1.7 percent.

Ice cream, Nonfat (hard) --- 1.61 million gallons, down 4.7 percent.

Sherbet (hard) --- 4.49 million gallons, down 8.9 percent.

Frozen Yogurt (total) --- 6.06 million gallons, up 2.0 percent.

Nonfat dry milk for human food: (compared with March 2005) --- 128 million pounds, up 17.2 percent.

Dry whey products: (comparisons with March 2005)

Dry whey, human --- 97.8 million pounds, up 17.1 percent.

Dry whey, animal --- 3.92 million pounds, down 52.2 percent.

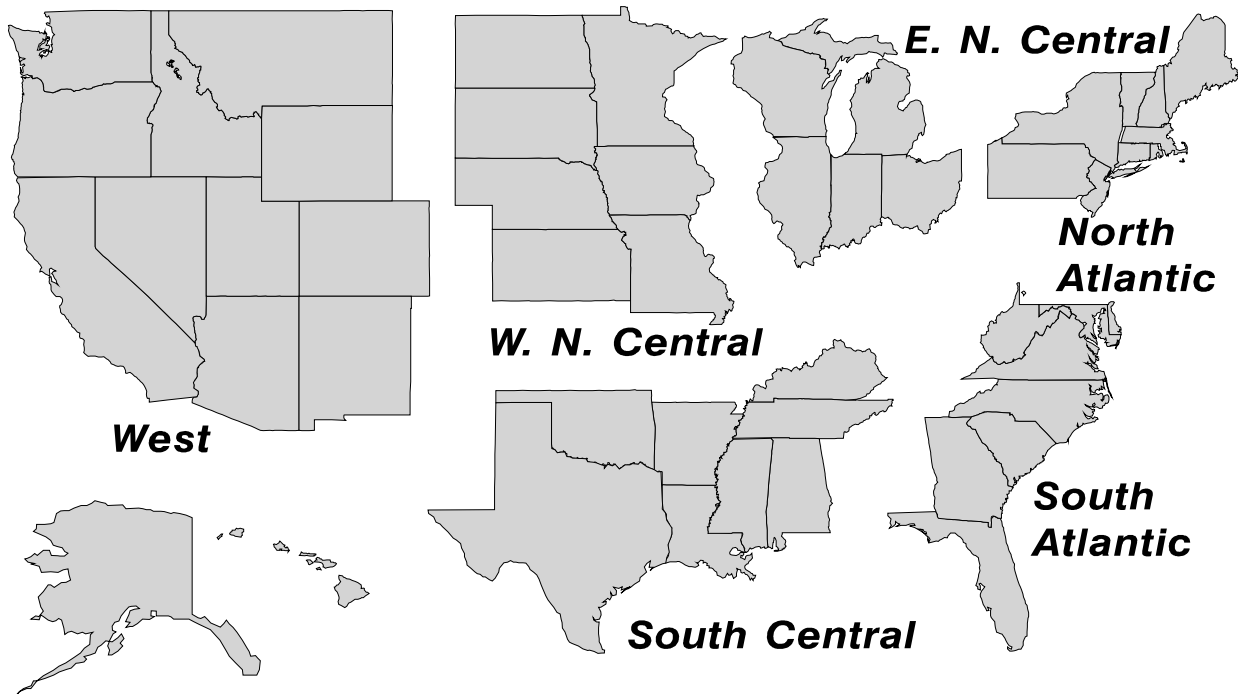
Dry whey, total --- 102 million pounds, up 10.9 percent.

Special Note

In order to better serve the dairy industry, a new data series called *Skim Milk Powders* was added to the Dairy Products 2005 Summary. The series continues in this publication (page 1). January 2006 production was 29,334 (000 pounds).

U. S. Geographic Regions Dairy Products

State totals are not published when fewer than 3 firms have reported or one firm comprises more than 60 percent of the State total. If we are not able to publish a region for confidentiality reasons, it will be combined with other regions when possible. For example, if North Atlantic can not be published, then it will be combined with South Atlantic to publish Atlantic. The West North Central and East North Central will be combined, if necessary, to form North Central. In the event that neither could be published, they may be combined with South Central to publish Central. Some tables will have only limited regions shown, therefore the regions may not add to the United States total.



Contents

	Page
Dairy Products: Production by Product, United States	1
Whey and Modified Whey Products: Production, Stocks, and Prices, United States	2
Dairy Products: Production by Product and Month, United States	3
Select Commodities by State and United States	10
Canned Milk and Dry Milk Products: Manufacturer's Shipments, Stocks, and Selling Prices	15
Procedures and Reliability	16
Information Contacts	16

**Dairy Products: Production by Product,
United States, March, 2005-2006**

Product	Mar 2005	Feb 2006 ¹	Mar 2006	Change From	
				Mar 2005	Feb 2006
	<i>1,000 Pounds</i>	<i>1,000 Pounds</i>	<i>1,000 Pounds</i>	<i>Percent</i>	<i>Percent</i>
Butter	122,402	136,953	142,025	16.0	3.7
Cheese					
American Types ²	331,468	304,376	338,396	2.1	11.2
Cheddar	268,668	246,344	270,566	0.7	9.8
Swiss	24,176	24,153	26,171	8.3	8.4
Brick and Muenster	6,656	7,706	8,855	33.0	14.9
Cream and Neufchatel	59,775	46,625	55,928	-6.4	20.0
Hispanic	14,636	14,009	15,355	4.9	9.6
Mozzarella	269,830	242,804	271,511	0.6	11.8
Other Italian Types	68,852	64,819	71,947	4.5	11.0
Total Italian Types	338,682	307,623	343,458	1.4	11.6
All Other Types	22,118	16,486	21,507	-2.8	30.5
Total	797,511	720,978	809,670	1.5	12.3
Cottage Cheese, Curd ³	40,496	34,145	40,235	-0.6	17.8
Cottage Cheese, Cream ⁴	32,682	27,193	31,698	-3.0	16.6
Cottage Cheese, Lowfat ⁵	35,064	30,818	35,703	1.8	15.9
Canned Evaporated and Condensed Whole Milk	48,779	36,318	43,059	-11.7	18.6
Dry Whole Milk	2,640	3,213	2,421	-8.3	-24.6
Nonfat Dry Milk, Human	109,299	117,466	128,128	17.2	9.1
Skim Milk Powders ⁶	28,148	25,628	19,989	-29.0	-22.0
Dry Skim Milk, Animal	395	393	577	46.1	46.8
Dry Buttermilk	5,694	6,176	7,392	29.8	19.7
Sour Cream	87,637	76,832	87,834	0.2	14.3
Yogurt, Plain & Flavored	275,949	238,108	285,682	3.5	20.0
	<i>1,000 Gallons</i>	<i>1,000 Gallons</i>	<i>1,000 Gallons</i>	<i>Percent</i>	<i>Percent</i>
Frozen Products					
Ice Cream, Regular, Hard	78,753	62,916	77,914	-1.1	23.8
Ice Cream, Lowfat, Hard	9,473	7,897	9,779	3.2	23.8
Ice Cream, Lowfat, Soft	23,454	16,237	22,587	-3.7	39.1
Ice Cream, Lowfat, Total	32,927	24,134	32,366	-1.7	34.1
Ice Cream, Nonfat, Hard	1,686	1,254	1,607	-4.7	28.1
Sherbet, Hard	4,924	4,173	4,485	-8.9	7.5
Water and Juice Ices	6,145	5,593	6,200	0.9	10.9
Frozen Yogurt, Total	5,942	4,524	6,062	2.0	34.0
Regular & Lowfat, Hard	1,599	1,337	1,505	-5.9	12.6
Nonfat, Hard	1,063	940	1,068	0.5	13.6
Other Frozen Dairy Products	815	444	678	-16.8	52.7
Mix for Frozen Products					
Ice Cream Mix	44,060	34,928	44,340	0.6	26.9
Ice Cream, Lowfat, Mix	19,743	13,879	18,672	-5.4	34.5
Ice Cream, Nonfat, Mix	1,104	851	1,178	6.7	38.4
Sherbet Mix	3,456	3,170	3,311	-4.2	4.4
Yogurt Mix	3,731	2,742	3,674	-1.5	34.0

¹ Revised.

² Includes Cheddar, Colby, Monterey, and Jack.

³ Mostly used for processing into cream or lowfat cottage cheese.

⁴ Fat content 4 percent or more.

⁵ Fat content less than 4 percent.

⁶ Includes protein standardized and blends.

**Whey and Modified Whey Products: Production, Stocks,
and Prices, United States, March, 2005-2006**

Product	Mar 2005	Feb 2006 ¹	Mar 2006	Change From	
				Mar 2005	Feb 2006
Production					
	<i>1,000 Pounds</i>	<i>1,000 Pounds</i>	<i>1,000 Pounds</i>	<i>Percent</i>	<i>Percent</i>
Condensed Whey, Solids Content ²					
Sweet-Type, Human	6,567	7,779	9,457	44.0	21.6
Dry Whey Products					
Dry Whey, Human	83,587	84,446	97,846	17.1	15.9
Dry Whey, Animal	8,188	5,267	3,917	-52.2	-25.6
Dry Whey, Total	91,775	89,713	101,763	10.9	13.4
Reduced Lactose and Minerals					
Human Food	3,608	3,440	4,046	12.1	17.6
Animal Feed	4,347	3,642	4,027	-7.4	10.6
Lactose, Human and Animal	55,909	51,855	58,145	4.0	12.1
Whey					
Protein Concentrate					
Human ³	26,420	28,567	30,055	13.8	5.2
Animal ³	4,259	4,417	5,012	17.7	13.5
Total ³	30,679	32,984	35,067	14.3	6.3
25.0-49.9 Percent ⁴	22,272	24,352	25,793	15.8	5.9
50.0-89.9 Percent ⁴	8,407	8,632	9,274	10.3	7.4
Protein Isolates ⁵	2,486	2,323	2,619	5.3	12.7
Manufacturers' Stocks End-of-Month ⁶					
	<i>1,000 Pounds</i>	<i>1,000 Pounds</i>	<i>1,000 Pounds</i>	<i>Percent</i>	<i>Percent</i>
Dry Whey Products					
Dry Whey, Human	34,822	36,407	40,641	16.7	11.6
Dry Whey, Animal	4,569	3,673	1,632	-64.3	-55.6
Dry Whey, Total	39,391	40,080	42,273	7.3	5.5
Reduced Lactose and Minerals					
Human and Animal ⁷	4,312	5,013	6,179	43.3	23.3
Lactose, Human and Animal	64,687	42,429	41,523	-35.8	-2.1
Whey					
Protein Concentrate					
Human ³	23,436	27,377	29,320	25.1	7.1
Animal ³	2,063	2,179	2,138	3.6	-1.9
Total ³	25,499	29,556	31,458	23.4	6.4
25.0-49.9 Percent ⁴	15,205	18,025	19,861	30.6	10.2
50.0-89.9 Percent ⁴	10,294	11,531	11,597	12.7	0.6
Manufacturers' Selling Price ⁸					
	<i>Cents per Pound</i>	<i>Cents per Pound</i>	<i>Cents per Pound</i>	<i>Cents Change</i>	<i>Cents Change</i>
Dry Whey, Animal	23.2	31.4	28.9	5.7	-2.5

¹ Revised.

² Final marketable product only. Does not include quantity used or shipped to another plant for further processing into dry whey or modified whey products. Does not include sweet-type, animal whey.

³ Whey Protein Concentrate, 25.0 to 89.9 percent.

⁴ Whey Protein Concentrate, Human and Animal.

⁵ Whey Protein Isolate, 90.0 percent or greater.

⁶ Stocks held by manufacturers at all points and in transit.

⁷ Reduced lactose and minerals stocks combined to avoid disclosure of individual operations.

⁸ Prices for bulk goods, f.o.b. plant. Average monthly prices reported by firms.

**Dairy Products: Production by Product and Month,
United States, 2005-2006 ¹**

Product and Month	By Month			Cumulative		
	2005	2006	Change From 2005	2005	2006	Change From 2005
	<i>1,000 Pounds</i>	<i>1,000 Pounds</i>	<i>Percent</i>	<i>1,000 Pounds</i>	<i>1,000 Pounds</i>	<i>Percent</i>
Total Cheese						
Jan	753,967	772,337	2.4	753,967	772,337	2.4
Feb	704,633	720,978	2.3	1,458,600	1,493,315	2.4
Mar	797,511	809,670	1.5	2,256,111	2,302,985	2.1
Apr	754,849			3,010,960		
May	783,943			3,794,903		
Jun	764,468			4,559,371		
Jul	739,472			5,298,843		
Aug	757,402			6,056,245		
Sep	745,485			6,801,730		
Oct	760,407			7,562,137		
Nov	766,061			8,328,198		
Dec	798,909			9,127,107		
American Cheese						
Jan	322,332	324,545	0.7	322,332	324,545	0.7
Feb	292,238	304,376	4.2	614,570	628,921	2.3
Mar	331,468	338,396	2.1	946,038	967,317	2.2
Apr	327,575			1,273,613		
May	332,501			1,606,114		
Jun	321,389			1,927,503		
Jul	315,977			2,243,480		
Aug	312,028			2,555,508		
Sep	301,791			2,857,299		
Oct	312,321			3,169,620		
Nov	313,195			3,482,815		
Dec	330,135			3,812,950		
Cheddar Cheese						
Jan	261,868	265,809	1.5	261,868	265,809	1.5
Feb	237,987	246,344	3.5	499,855	512,153	2.5
Mar	268,668	270,566	0.7	768,523	782,719	1.8
Apr	262,787			1,031,310		
May	265,569			1,296,879		
Jun	258,211			1,555,090		
Jul	252,709			1,807,799		
Aug	245,144			2,052,943		
Sep	239,629			2,292,572		
Oct	248,910			2,541,482		
Nov	248,464			2,789,946		
Dec	262,469			3,052,415		

See footnote(s) at end of table.

--continued

**Dairy Products: Production by Product and Month,
United States, 2005-2006¹ (continued)**

Product and Month	By Month			Cumulative		
	2005	2006	Change From 2005	2005	2006	Change From 2005
	<i>1,000 Pounds</i>	<i>1,000 Pounds</i>	<i>Percent</i>	<i>1,000 Pounds</i>	<i>1,000 Pounds</i>	<i>Percent</i>
Italian Cheese						
Jan	316,288	328,315	3.8	316,288	328,315	3.8
Feb	299,673	307,623	2.7	615,961	635,938	3.2
Mar	338,682	343,458	1.4	954,643	979,396	2.6
Apr	310,719			1,265,362		
May	327,196			1,592,558		
Jun	319,049			1,911,607		
Jul	303,054			2,214,661		
Aug	311,518			2,526,179		
Sep	310,339			2,836,518		
Oct	311,901			3,148,419		
Nov	320,304			3,468,723		
Dec	336,007			3,804,730		
Mozzarella						
Jan	250,595	259,574	3.6	250,595	259,574	3.6
Feb	239,382	242,804	1.4	489,977	502,378	2.5
Mar	269,830	271,511	0.6	759,807	773,889	1.9
Apr	247,184			1,006,991		
May	262,238			1,269,229		
Jun	255,540			1,524,769		
Jul	243,304			1,768,073		
Aug	244,631			2,012,704		
Sep	243,687			2,256,391		
Oct	243,671			2,500,062		
Nov	252,933			2,752,995		
Dec	267,803			3,020,798		
Other Italian						
Jan	65,693	68,741	4.6	65,693	68,741	4.6
Feb	60,291	64,819	7.5	125,984	133,560	6.0
Mar	68,852	71,947	4.5	194,836	205,507	5.5
Apr	63,535			258,371		
May	64,958			323,329		
Jun	63,509			386,838		
Jul	59,750			446,588		
Aug	66,887			513,475		
Sep	66,652			580,127		
Oct	68,230			648,357		
Nov	67,371			715,728		
Dec	68,204			783,932		

See footnote(s) at end of table.

--continued

**Dairy Products: Production by Product and Month,
United States, 2005-2006 ¹ (continued)**

Product and Month	By Month			Cumulative		
	2005	2006	Change From 2005	2005	2006	Change From 2005
	<i>1,000 Pounds</i>	<i>1,000 Pounds</i>	<i>Percent</i>	<i>1,000 Pounds</i>	<i>1,000 Pounds</i>	<i>Percent</i>
Butter						
Jan	128,020	147,251	15.0	128,020	147,251	15.0
Feb	116,927	136,953	17.1	244,947	284,204	16.0
Mar	122,402	142,025	16.0	367,349	426,229	16.0
Apr	117,061			484,410		
May	120,715			605,125		
Jun	106,559			711,684		
Jul	95,929			807,613		
Aug	93,194			900,807		
Sep	100,647			1,001,454		
Oct	108,915			1,110,369		
Nov	110,905			1,221,274		
Dec	125,953			1,347,227		
Nonfat Dry Milk, Human						
Jan	93,261	107,254	15.0	93,261	107,254	15.0
Feb	97,275	117,466	20.8	190,536	224,720	17.9
Mar	109,299	128,128	17.2	299,835	352,848	17.7
Apr	104,876			404,711		
May	124,329			529,040		
Jun	124,206			653,246		
Jul	108,865			762,111		
Aug	86,679			848,790		
Sep	70,954			919,744		
Oct	73,554			993,298		
Nov	89,095			1,082,393		
Dec	103,711			1,186,104		
Total Dry Whey ²						
Jan	85,936	88,243	2.7	85,936	88,243	2.7
Feb	79,665	89,713	12.6	165,601	177,956	7.5
Mar	91,775	101,763	10.9	257,376	279,719	8.7
Apr	91,260			348,636		
May	94,083			442,719		
Jun	89,357			532,076		
Jul	89,143			621,219		
Aug	87,438			708,657		
Sep	83,948			792,605		
Oct	82,186			874,791		
Nov	84,844			959,635		
Dec	86,187			1,045,822		

See footnote(s) at end of table.

--continued

**Dairy Products: Production by Product and Month,
United States, 2005-2006 ¹ (continued)**

Product and Month	By Month			Cumulative		
	2005	2006	Change From 2005	2005	2006	Change From 2005
	<i>1,000 Pounds</i>	<i>1,000 Pounds</i>	<i>Percent</i>	<i>1,000 Pounds</i>	<i>1,000 Pounds</i>	<i>Percent</i>
Cream Cottage Cheese						
Jan	29,553	27,785	-6.0	29,553	27,785	-6.0
Feb	27,833	27,193	-2.3	57,386	54,978	-4.2
Mar	32,682	31,698	-3.0	90,068	86,676	-3.8
Apr	30,623			120,691		
May	31,463			152,154		
Jun	32,266			184,420		
Jul	31,938			216,358		
Aug	33,782			250,140		
Sep	33,011			283,151		
Oct	30,269			313,420		
Nov	28,679			342,099		
Dec	26,058			368,157		
Lowfat Cottage Cheese						
Jan	30,843	31,617	2.5	30,843	31,617	2.5
Feb	32,060	30,818	-3.9	62,903	62,435	-0.7
Mar	35,064	35,703	1.8	97,967	98,138	0.2
Apr	32,706			130,673		
May	34,904			165,577		
Jun	35,362			200,939		
Jul	32,436			233,375		
Aug	35,568			268,943		
Sep	34,506			303,449		
Oct	32,642			336,091		
Nov	31,406			367,497		
Dec	28,574			396,071		
	<i>1,000 Gallons</i>	<i>1,000 Gallons</i>	<i>Percent</i>	<i>1,000 Gallons</i>	<i>1,000 Gallons</i>	<i>Percent</i>
Ice Cream, Regular, Hard						
Jan	62,103	61,826	-0.4	62,103	61,826	-0.4
Feb	65,827	62,916	-4.4	127,930	124,742	-2.5
Mar	78,753	77,914	-1.1	206,683	202,656	-1.9
Apr	78,091			284,774		
May	78,375			363,149		
Jun	91,190			454,339		
Jul	87,054			541,393		
Aug	89,142			630,535		
Sep	72,359			702,894		
Oct	69,862			772,756		
Nov	61,133			833,889		
Dec	54,854			888,743		

See footnote(s) at end of table.

--continued

**Dairy Products: Production by Product and Month,
United States, 2005-2006¹ (continued)**

Product and Month	By Month			Cumulative		
	2005	2006	Change From 2005	2005	2006	Change From 2005
	<i>1,000 Gallons</i>	<i>1,000 Gallons</i>	<i>Percent</i>	<i>1,000 Gallons</i>	<i>1,000 Gallons</i>	<i>Percent</i>
Ice Cream, Lowfat						
Jan	24,199	25,444	5.1	24,199	25,444	5.1
Feb	26,181	24,134	-7.8	50,380	49,578	-1.6
Mar	32,927	32,366	-1.7	83,307	81,944	-1.6
Apr	33,192			116,499		
May	33,123			149,622		
Jun	38,572			188,194		
Jul	36,928			225,122		
Aug	35,592			260,714		
Sep	30,745			291,459		
Oct	27,013			318,472		
Nov	23,770			342,242		
Dec	21,726			363,968		
Ice Cream, NF, Hard						
Jan	1,205	1,330	10.4	1,205	1,330	10.4
Feb	1,715	1,254	-26.9	2,920	2,584	-11.5
Mar	1,686	1,607	-4.7	4,606	4,191	-9.0
Apr	1,682			6,288		
May	1,730			8,018		
Jun	1,923			9,941		
Jul	2,188			12,129		
Aug	1,910			14,039		
Sep	1,611			15,650		
Oct	1,538			17,188		
Nov	1,319			18,507		
Dec	1,153			19,660		
Sherbet, Hard						
Jan	3,838	3,893	1.4	3,838	3,893	1.4
Feb	4,036	4,173	3.4	7,874	8,066	2.4
Mar	4,924	4,485	-8.9	12,798	12,551	-1.9
Apr	5,111			17,909		
May	4,934			22,843		
Jun	5,825			28,668		
Jul	5,425			34,093		
Aug	5,632			39,725		
Sep	4,953			44,678		
Oct	3,724			48,402		
Nov	3,442			51,844		
Dec	3,436			55,280		

See footnote(s) at end of table.

--continued

**Dairy Products: Production by Product and Month,
United States, 2005-2006 ¹ (continued)**

Product and Month	By Month			Cumulative		
	2005	2006	Change From 2005	2005	2006	Change From 2005
	<i>1,000 Pounds</i>	<i>1,000 Pounds</i>	<i>Percent</i>	<i>1,000 Pounds</i>	<i>1,000 Pounds</i>	<i>Percent</i>
Sour Cream						
Jan	76,976	81,288	5.6	76,976	81,288	5.6
Feb	73,791	76,832	4.1	150,767	158,120	4.9
Mar	87,637	87,834	0.2	238,404	245,954	3.2
Apr	72,323			310,727		
May	86,250			396,977		
Jun	85,798			482,775		
Jul	79,324			562,099		
Aug	90,935			653,034		
Sep	79,208			732,242		
Oct	90,019			822,261		
Nov	108,466			930,727		
Dec	99,090			1,029,817		

See footnote(s) at end of table.

--continued

**Dairy Products: Production by Product and Month,
United States, 2005-2006 ¹ (continued)**

Product and Month	By Month			Cumulative		
	2005	2006	Change From 2005	2005	2006	Change From 2005
	<i>1,000 Pounds</i>	<i>1,000 Pounds</i>	<i>Percent</i>	<i>1,000 Pounds</i>	<i>1,000 Pounds</i>	<i>Percent</i>
Yogurt						
Jan	224,187	252,353	12.6	224,187	252,353	12.6
Feb	236,193	238,108	0.8	460,380	490,461	6.5
Mar	275,949	285,682	3.5	736,329	776,143	5.4
Apr	247,409			983,738		
May	264,459			1,248,197		
Jun	263,178			1,511,375		
Jul	244,608			1,755,983		
Aug	265,359			2,021,342		
Sep	273,643			2,294,985		
Oct	249,329			2,544,314		
Nov	219,567			2,763,881		
Dec	225,908			2,989,789		

See footnote(s) at end of table.

--continued

**Dairy Products: Production by Product and Month,
United States, 2005-2006 ¹ (continued)**

Product and Month	By Month			Cumulative		
	2005	2006	Change From 2005	2005	2006	Change From 2005
	<i>1,000 Gallons</i>	<i>1,000 Gallons</i>	<i>Percent</i>	<i>1,000 Gallons</i>	<i>1,000 Gallons</i>	<i>Percent</i>
Frozen Yogurt						
Jan	4,353	4,131	-5.1	4,353	4,131	-5.1
Feb	4,910	4,524	-7.9	9,263	8,655	-6.6
Mar	5,942	6,062	2.0	15,205	14,717	-3.2
Apr	5,737			20,942		
May	6,239			27,181		
Jun	6,412			33,593		
Jul	5,867			39,460		
Aug	6,142			45,602		
Sep	5,456			51,058		
Oct	5,114			56,172		
Nov	4,419			60,591		
Dec	4,460			65,051		

¹ February 2006 data revised.

² Excludes all modified dry whey products.

Total Cheese, Excluding Cottage Cheese: Production by State and United States, March 2005-2006

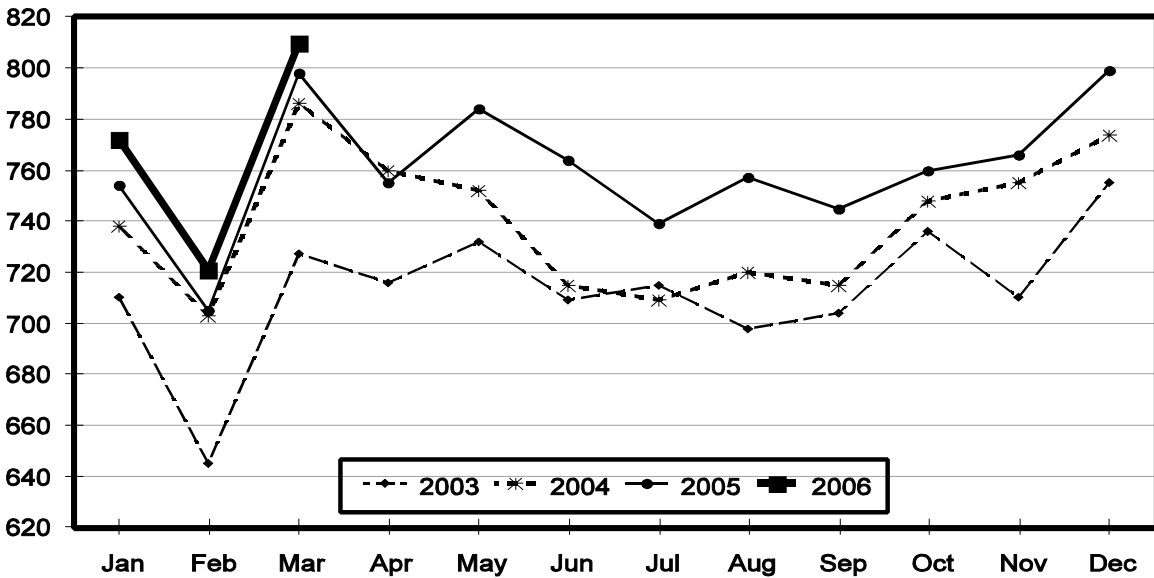
State	Mar 2005	Feb ¹ 2006	Mar 2006	Change From	
				Mar 2005	Feb 2006
	<i>1,000 Pounds</i>	<i>1,000 Pounds</i>	<i>1,000 Pounds</i>	<i>Percent</i>	<i>Percent</i>
CA	181,396	164,830	188,522	3.9	14.4
ID	60,716	63,376	66,186	9.0	4.4
IL	7,949	7,262	7,786	-2.1	7.2
IA	13,620	12,766	13,789	1.2	8.0
MN	55,596	51,324	58,685	5.6	14.3
NY	59,577	54,159	60,854	2.1	12.4
OH	16,930	16,001	17,327	2.3	8.3
PA	37,096	29,414	35,439	-4.5	20.5
SD	14,657	14,519	15,184	3.6	4.6
UT	6,165	5,713	6,905	12.0	20.9
WI	207,095	186,724	208,786	0.8	11.8
Oth Sts ²	136,714	114,890	130,207	-4.8	13.3
US	797,511	720,978	809,670	1.5	12.3
N Atl	113,942	96,631	112,493	-1.3	16.4
S Atl	3,178	2,927	2,913	-8.3	-0.5
E N Cen	247,961	222,256	247,571	-0.2	11.4
W N Cen	94,672	83,232	93,877	-0.8	12.8
S Cen	8,312	7,184	10,155	22.2	41.4
West	329,446	308,748	342,661	4.0	11.0

¹ Revised.

² States not shown when fewer than 3 plants reported or individual plant operations could be disclosed. Percent change shown only when comparable States are included in the calculation.

Total Cheese Production United States

Million Pounds



American Cheese: Production by State and United States, March 2005-2006

State	Mar 2005	Feb ¹ 2006	Mar 2006	Change From	
				Mar 2005	Feb 2006
	<i>1,000 Pounds</i>	<i>1,000 Pounds</i>	<i>1,000 Pounds</i>	<i>Percent</i>	<i>Percent</i>
CA	73,908	63,778	73,537	-0.5	15.3
ID	45,048	45,459	48,559	7.8	6.8
IA	10,898	9,964	10,740	-1.4	7.8
MN	52,642	47,169	54,751	4.0	16.1
OH	3,175	3,279	3,462	9.0	5.6
OR	10,106	8,628	9,578	-5.2	11.0
WI	76,704	66,668	72,200	-5.9	8.3
Oth Sts ²	58,987	59,431	65,569	11.2	10.3
US	331,468	304,376	338,396	2.1	11.2
Atlantic	11,716	11,201	11,730	0.1	4.7
E N Cen	80,812	70,661	76,403	-5.5	8.1
W N Cen	71,228	64,224	73,305	2.9	14.1
S Cen	5,047	3,392	4,862	-3.7	43.3
West	162,665	154,898	172,096	5.8	11.1

¹ Revised.

² States not shown when fewer than 3 plants reported or individual plant operations could be disclosed. Percent change shown only when comparable States are included in the calculation.

Cheddar Cheese: Production by State and United States, March 2005-2006

State	Mar 2005	Feb ¹ 2006	Mar 2006	Change From	
				Mar 2005	Feb 2006
	<i>1,000 Pounds</i>	<i>1,000 Pounds</i>	<i>1,000 Pounds</i>	<i>Percent</i>	<i>Percent</i>
CA	46,317	38,766	42,831	-7.5	10.5
ID	40,809	43,115	44,886	10.0	4.1
MN	48,346	42,247	49,727	2.9	17.7
OH	2,199	2,423	2,255	2.5	-6.9
WI	61,499	53,104	56,700	-7.8	6.8
Oth Sts ²	69,498	66,689	74,167	6.7	11.2
US	268,668	246,344	270,566	0.7	9.8
Atlantic	11,360	10,948	11,494	1.2	5.0
E N Cen	63,712	55,561	58,968	-7.4	6.1
W N Cen	61,321	53,584	62,521	2.0	16.7
S Cen	5,046	3,391	4,861	-3.7	43.4
West	127,229	122,860	132,722	4.3	8.0

¹ Revised.

² States not shown when fewer than 3 plants reported or individual plant operations could be disclosed. Percent change shown only when comparable States are included in the calculation.

Italian Cheese, Total: Production by State and United States, March 2005-2006

State	Mar 2005	Feb ¹ 2006	Mar 2006	Change From	
				Mar 2005	Feb 2006
	<i>1,000 Pounds</i>	<i>1,000 Pounds</i>	<i>1,000 Pounds</i>	<i>Percent</i>	<i>Percent</i>
CA	92,025	87,886	97,579	6.0	11.0
ID	11,022	13,299	11,951	8.4	-10.1
NY	33,152	29,601	35,266	6.4	19.1
PA	25,324	20,867	23,013	-9.1	10.3
SD	7,300	7,748	7,732	5.9	-0.2
WI	93,004	87,324	99,420	6.9	13.9
Oth Sts ²	76,855	60,898	68,497	-10.9	12.5
US ³	338,682	307,623	343,458	1.4	11.6
Atlantic	70,796	58,573	69,476	-1.9	18.6
E N Cen	110,615	101,043	114,835	3.8	13.6
West	143,904	133,492	144,633	0.5	8.3

¹ Revised.

² States not shown when fewer than 3 plants reported or individual plant operations could be disclosed. Percent change shown only when comparable States are included in the calculation.

³ Region totals may not add to U.S. when compiled regions could not be disclosed.

Mozzarella Cheese: Production by State and United States, March 2005-2006

State	Mar 2005	Feb ¹ 2006	Mar 2006	Change From	
				Mar 2005	Feb 2006
	<i>1,000 Pounds</i>	<i>1,000 Pounds</i>	<i>1,000 Pounds</i>	<i>Percent</i>	<i>Percent</i>
CA	80,616	77,108	87,715	8.8	13.8
ID	9,568	11,809	10,468	9.4	-11.4
NY	16,681	14,440	16,309	-2.2	12.9
PA	20,303	18,388	19,923	-1.9	8.3
WI	69,410	64,108	73,200	5.5	14.2
Oth Sts ²	73,252	56,951	63,896	-12.8	12.2
US ³	269,830	242,804	271,511	0.6	11.8
Atlantic	46,250	38,103	44,432	-3.9	16.6
E N Cen	84,489	75,479	85,814	1.6	13.7
West	130,018	120,478	132,374	1.8	9.9

¹ Revised.

² States not shown when fewer than 3 plants reported or individual plant operations could be disclosed. Percent change shown only when comparable States are included in the calculation.

³ Region totals may not add to U.S. when compiled regions could not be disclosed.

Butter: Production by State and United States, March 2005-2006

State	Mar 2005	Feb ¹ 2006	Mar 2006	Change From	
				Mar 2005	Feb 2006
	<i>1,000 Pounds</i>	<i>1,000 Pounds</i>	<i>1,000 Pounds</i>	<i>Percent</i>	<i>Percent</i>
CA	34,505	41,479	44,062	27.7	6.2
NY	1,660	1,639	1,625	-2.1	-0.9
PA	6,375	5,974	7,555	18.5	26.5
WI	34,405	37,925	36,400	5.8	-4.0
Oth Sts ²	45,457	49,936	52,383	15.2	4.9
US ³	122,402	136,953	142,025	16.0	3.7
N Atl	11,696	10,691	12,046	3.0	12.7
E N Cen	36,983	42,513	40,910	10.6	-3.8
W N Cen	6,921	10,118	10,706	54.7	5.8
West	51,305	59,522	63,527	23.8	6.7

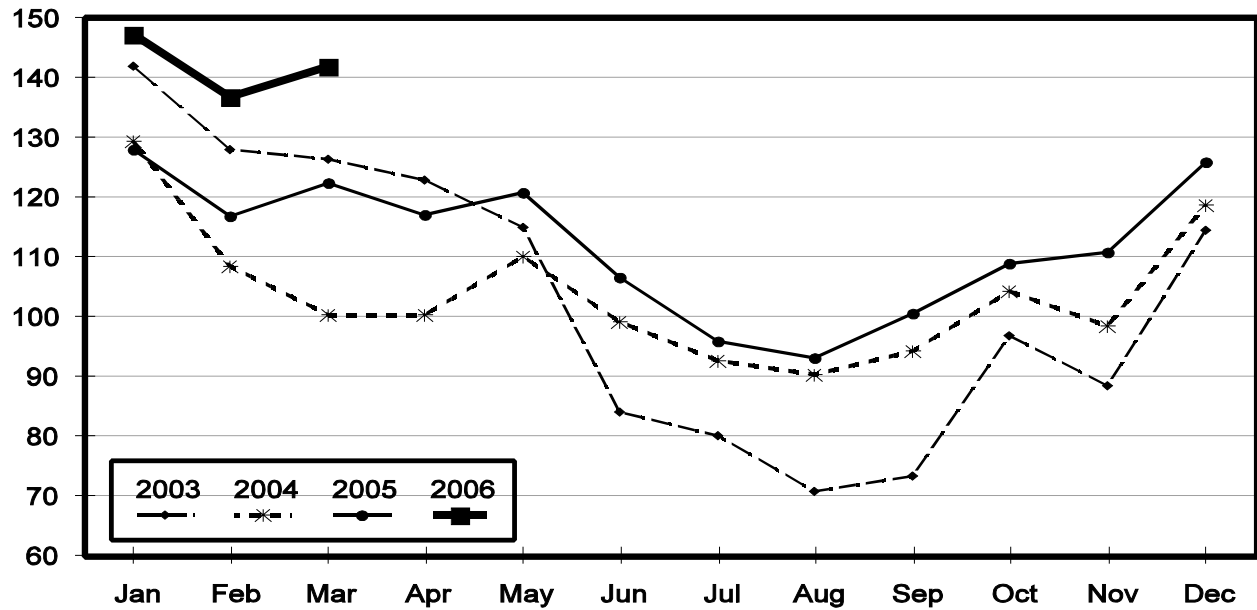
¹ Revised.

² States not shown when fewer than 3 plants reported or individual plant operations could be disclosed. Percent change shown only when comparable States are included in the calculation.

³ Region totals may not add to U.S. when compiled regions could not be disclosed.

Total Butter Production United States

Million Pounds



**Nonfat Dry Milk, Human: Production by State
and United States, March 2005-2006**

State	Mar 2005	Feb ¹ 2006	Mar 2006	Change From	
				Mar 2005	Feb 2006
	<i>1,000 Pounds</i>	<i>1,000 Pounds</i>	<i>1,000 Pounds</i>	<i>Percent</i>	<i>Percent</i>
CA	43,959	57,710	61,684	40.3	6.9
PA	7,693	8,170	11,509	49.6	40.9
Oth Sts ²	57,647	51,586	54,935	-4.7	6.5
US	109,299	117,466	128,128	17.2	9.1
Atlantic	15,564	16,919	21,202	36.2	25.3
E N Cen	3,737	4,629	4,213	12.7	-9.0
W N Cen	6,007	4,560	5,048	-16.0	10.7
S Cen	8,751	6,690	6,680	-23.7	-0.1
West	75,240	84,668	90,985	20.9	7.5

¹ Revised.

² States not shown when fewer than 3 plants reported or individual plant operations could be disclosed. Percent change shown only when comparable States are included in the calculation.

**Dry Whey, Human: Production by State
and United States, March 2005-2006**

State	Mar 2005	Feb ¹ 2006	Mar 2006	Change From	
				Mar 2005	Feb 2006
	<i>1,000 Pounds</i>	<i>1,000 Pounds</i>	<i>1,000 Pounds</i>	<i>Percent</i>	<i>Percent</i>
CA	9,361	8,389	10,043	7.3	19.7
MN	3,392	3,507	4,160	22.6	18.6
NY	11,044	10,042	11,495	4.1	14.5
UT	2,010	1,681	1,875	-6.7	11.5
WI	26,253	25,176	28,400	8.2	12.8
Oth Sts ²	31,527	35,651	41,873	32.8	17.5
US	83,587	84,446	97,846	17.1	15.9
Atlantic	20,312	18,861	21,088	3.8	11.8
Central	39,106	37,618	42,801	9.4	13.8
West	24,169	27,967	33,957	40.5	21.4

¹ Revised.

² States not shown when fewer than 3 plants reported or individual plant operations could be disclosed. Percent change shown only when comparable States are included in the calculation.

Ice Cream, Hard: Production by State and United States, March 2005-2006

State	Mar 2005	Feb ¹ 2006	Mar 2006	Change From	
				Mar 2005	Feb 2006
	<i>1,000 Gallons</i>	<i>1,000 Gallons</i>	<i>1,000 Gallons</i>	<i>Percent</i>	<i>Percent</i>
CA	11,607	8,653	12,291	5.9	42.0
FL	1,871	1,700	1,800	-3.8	5.9
IN	8,275	5,372	7,134	-13.8	32.8
MD	1,825	1,406	1,778	-2.6	26.5
MA	3,895	4,039	4,288	10.1	6.2
MN	4,207	2,701	3,565	-15.3	32.0
MO	1,721	2,255	2,606	51.4	15.6
NY	2,579	2,045	2,360	-8.5	15.4
OH	2,447	1,677	2,030	-17.0	21.0
OR	1,312	932	1,300	-0.9	39.5
PA	3,537	2,314	3,106	-12.2	34.2
TN	1,602	1,111	1,523	-4.9	37.1
TX	4,700	4,367	5,076	8.0	16.2
UT	2,291	1,828	2,151	-6.1	17.7
Oth Sts ²	26,884	22,516	26,906	0.1	19.5
US	78,753	62,916	77,914	-1.1	23.8
N Atl	14,058	11,337	12,403	-11.8	9.4
S Atl	6,518	5,615	6,311	-3.2	12.4
E N Cen	15,785	11,438	14,840	-6.0	29.7
W N Cen	13,156	11,393	13,982	6.3	22.7
S Cen	10,326	8,739	11,077	7.3	26.8
West	18,910	14,394	19,301	2.1	34.1

¹ Revised.

² States not shown when fewer than 3 plants reported or individual plant operations could be disclosed. Percent change shown only when comparable States are included in the calculation.

**Canned Milk and Dry Milk Products: Manufacturers' Shipments,
and Stocks, March, 2005-2006**

Product	Mar 2005	Feb 2006 ¹	Mar 2006	Change From	
				Mar 2005	Feb 2006
	Manufacturers' Shipments ²				
	<i>1,000 Pounds</i>	<i>1,000 Pounds</i>	<i>1,000 Pounds</i>	<i>Percent</i>	<i>Percent</i>
Nonfat Dry Milk, Human	102,717	105,453	113,931	10.9	8.0
	Manufacturers' Stocks End-of-Month ³				
	<i>1,000 Pounds</i>	<i>1,000 Pounds</i>	<i>1,000 Pounds</i>	<i>Percent</i>	<i>Percent</i>
Canned Evaporated and Condensed Whole Milk	43,824	61,910	40,738	-7.0	-34.2
Nonfat Dry Milk, Human	84,775	119,427	126,499	49.2	5.9
Dry Buttermilk, Total	5,562	17,057	15,596	180.4	-8.6

¹ Revised.

² For dry products, shipments of bulk goods only.

³ Stocks held by manufacturers at all points and in transit.

Procedures and Reliability: Estimates included in this report are based on data provided each month by manufacturers of these products. In 32 States, the State Departments of Agriculture assist in collection of data, which eliminates duplicate reporting and reduces respondent burden. Data are collected by mail, personal and telephone interviews following the close of each month. There were 1,081 manufacturers that made one or more products in 2005. Each month, reports are generally received from all dairy plants in States with small numbers of plants. In States with large numbers of plants, survey procedures are designed to obtain monthly reports from all large plants and from a sample of small plants. Monthly estimates are based upon returns from about 70 percent of the plants which account for 70 to 90 percent of the total production of major dairy products.

Revision Policy: Monthly estimates are subject to revision the month following the preliminary estimates. Annual estimates are published in the "**Dairy Products**" report published each April which includes any revisions made to current and previous year. An attempt is made to get information from all plants for preparing these estimates

Information Contacts

Listed below are the commodity specialists in the Livestock Branch of the National Agricultural Statistics Service to contact for additional information.

- Dan Kerestes, Chief Livestock Branch (202) 720-3570
- William Weaver, Head, Livestock Section (202) 720-3570
 - Bruce Boess - Hogs and Pigs (202) 720-3106
 - Shawn Clark - Dairy Products (202) 690-3236
 - Scott Hollis - Sheep , Lambs, Wool and Mohair (202) 720-4751
 - Mike Miller - Cattle (202) 720-3040
 - Katy Paulsen - Livestock Slaughter (515) 284-4340
 - Ann Summa - Milk and Milk Cows (202) 720-3278
 - Charmaine Wilson - Dairy Products Prices (202) 690-2168

ACCESS TO REPORTS!!

For your convenience, there are several ways to obtain NASS reports, data products, and services:

INTERNET ACCESS

All NASS reports are available free of charge on the worldwide Internet. For access, connect to the Internet and go to the NASS Home Page at: **www.nass.usda.gov**.

E-MAIL SUBSCRIPTION

All NASS reports are available by subscription free of charge direct to your e-mail address. Starting with the NASS Home Page at **www.nass.usda.gov**, under the right navigation, *Receive reports by Email*, click on **National** or **State**. Follow the instructions on the screen.

PRINTED REPORTS OR DATA PRODUCTS

CALL OUR TOLL-FREE ORDER DESK: 800-999-6779 (U.S. and Canada)
Other areas, please call 703-605-6220 FAX: 703-605-6900
(Visa, MasterCard, check, or money order acceptable for payment.)

ASSISTANCE

For **assistance** with general agricultural statistics or further information about NASS or its products or services, contact the **Agricultural Statistics Hotline** at **800-727-9540**, 7:30 a.m. to 4:00 p.m. ET, or e-mail: **nass@nass.usda.gov**.

The U.S. Department of Agriculture (USDA) prohibits discrimination in all its programs and activities on the basis of race, color, national origin, age, disability, and where applicable, sex, marital status, familial status, parental status, religion, sexual orientation, genetic information, political beliefs, reprisal, or because all or part of an individual's income is derived from any public assistance program. (Not all prohibited bases apply to all programs.) Persons with disabilities who require alternative means for communication of program information (Braille, large print, audiotape, etc.) should contact USDA's TARGET Center at (202) 720-2600 (voice and TDD).

To file a complaint of discrimination, write to USDA, Director, Office of Civil Rights, 1400 Independence Avenue, S.W., Washington, D.C. 20250-9410, or call (800) 795-3272 (voice) or (202) 720-6382 (TDD). USDA is an equal opportunity provider and employer.