



# NASS

FACT FINDERS FOR AGRICULTURE  
UNITED STATES DEPARTMENT OF AGRICULTURE

Washington, D.C.

# Dairy Products

---

Released June 2, 2006, by the National Agricultural Statistics Service (NASS), Agricultural Statistics Board, U.S. Department of Agriculture. For information on *Dairy Products* call Shawn Clark at (202) 690-3236, office hours 7:30 a.m. to 4:00 p.m. ET.

## April 2006 Highlights

**Total cheese** output (excluding cottage cheese) was 780 million pounds, 3.3 percent above April 2005 but 4.0 percent below March 2006.

**Italian type cheese** production totaled 329 million pounds, 5.8 percent above April 2005 but 5.0 percent below March 2006.

**American type cheese** production totaled 334 million pounds, 1.9 percent above April 2005 but 1.4 percent below March 2006.

**Butter** production was 128 million pounds, 9.2 percent above April 2005 but 10.0 percent below March 2006.

**Frozen dessert:** (comparisons with April 2005)

Ice cream, Regular (hard) --- 77.6 million gallons, down 0.7 percent.

Ice cream, Lowfat (total) --- 31.9 million gallons, down 3.8 percent.

Ice cream, Nonfat (hard) --- 1.32 million gallons, down 21.3 percent.

Sherbet (hard) --- 4.57 million gallons, down 10.5 percent.

Frozen Yogurt (total) --- 5.98 million gallons, up 4.2 percent.

**Nonfat dry milk for human food:** (compared with April 2005) --- 129 million pounds, up 23.0 percent.

**Dry whey products:** (comparisons with April 2005)

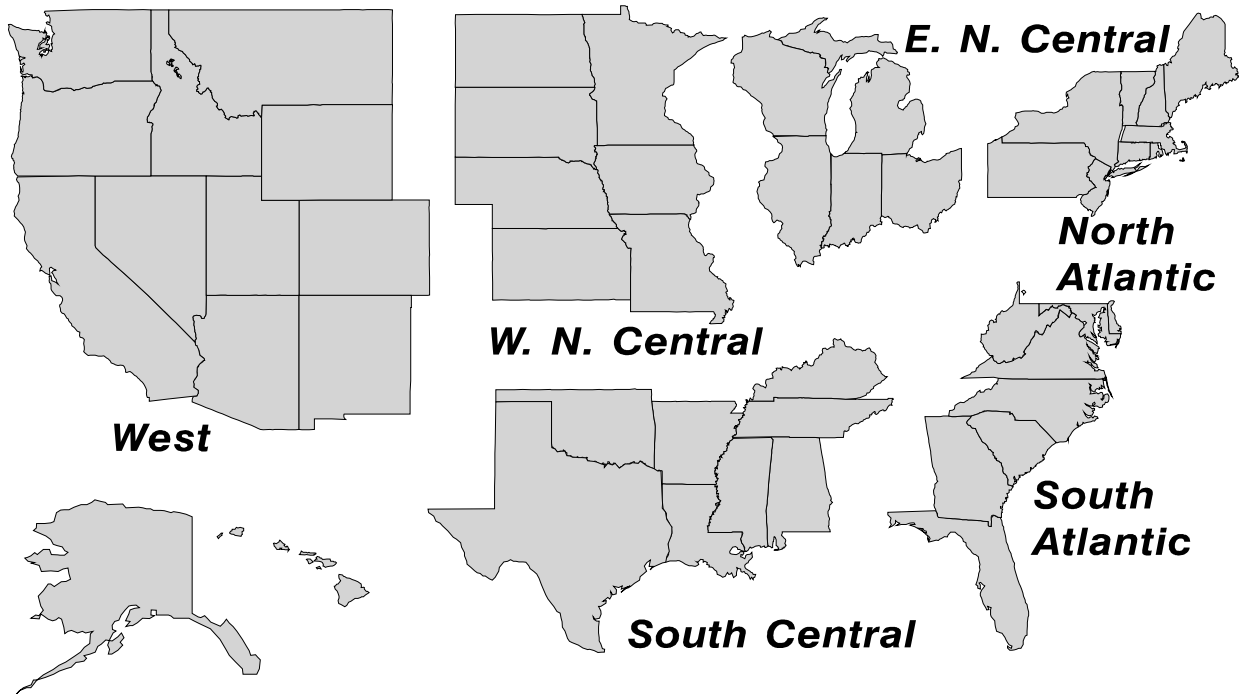
Dry whey, human --- 92.7 million pounds, up 10.3 percent.

Dry whey, animal --- 4.52 million pounds, down 37.6 percent.

Dry whey, total --- 97.2 million pounds, up 6.5 percent.

## U. S. Geographic Regions Dairy Products

State totals are not published when fewer than 3 firms have reported or one firm comprises more than 60 percent of the State total. If we are not able to publish a region for confidentiality reasons, it will be combined with other regions when possible. For example, if North Atlantic can not be published, then it will be combined with South Atlantic to publish Atlantic. The West North Central and East North Central will be combined, if necessary, to form North Central. In the event that neither could be published, they may be combined with South Central to publish Central. Some tables will have only limited regions shown, therefore the regions may not add to the United States total.



## Contents

## Page

Dairy Products: Production by Product, United States .....	1
Whey and Modified Whey Products: Production, Stocks, and Prices, United States .....	2
Dairy Products: Production by Product and Month, United States .....	3
Select Commodities by State and United States .....	10
Canned Milk and Dry Milk Products: Manufacturer's Shipments, Stocks, and Selling Prices .....	15
Procedures and Reliability .....	16
Information Contacts .....	16

**Dairy Products: Production by Product,  
United States, April, 2005-2006**

Product	Apr 2005	Mar 2006 <sup>1</sup>	Apr 2006	Change From	
				Apr 2005	Mar 2006
	<i>1,000 Pounds</i>	<i>1,000 Pounds</i>	<i>1,000 Pounds</i>	<i>Percent</i>	<i>Percent</i>
Butter	117,061	141,993	127,778	9.2	-10.0
Cheese					
American Types <sup>2</sup>	327,575	338,383	333,765	1.9	-1.4
Cheddar	262,787	270,553	272,281	3.6	0.6
Swiss	23,851	26,016	25,317	6.1	-2.7
Brick and Muenster	6,162	9,163	8,738	41.8	-4.6
Cream and Neufchatel	45,872	55,944	49,564	8.0	-11.4
Hispanic	13,670	15,360	14,222	4.0	-7.4
Mozzarella	247,184	273,870	261,753	5.9	-4.4
Other Italian Types	63,535	72,309	67,049	5.5	-7.3
Total Italian Types	310,719	346,179	328,802	5.8	-5.0
All Other Types	27,000	21,589	19,316	-28.5	-10.5
Total	754,849	812,634	779,724	3.3	-4.0
Cottage Cheese, Curd <sup>3</sup>	39,481	40,194	37,137	-5.9	-7.6
Cottage Cheese, Cream <sup>4</sup>	30,623	32,115	28,744	-6.1	-10.5
Cottage Cheese, Lowfat <sup>5</sup>	32,706	35,940	32,357	-1.1	-10.0
Canned Evaporated and Condensed Whole Milk	47,223	42,459	41,786	-11.5	-1.6
Dry Whole Milk	4,155	2,421	1,590	-61.7	-34.3
Nonfat Dry Milk, Human Skim Milk Powders <sup>6</sup>	104,876	128,269	129,022	23.0	0.6
Dry Skim Milk, Animal	335	577	527	57.3	-8.7
Dry Buttermilk	7,058	7,392	6,460	-8.5	-12.6
Sour Cream	72,323	89,000	79,313	9.7	-10.9
Yogurt, Plain & Flavored	247,409	280,577	254,188	2.7	-9.4
	<i>1,000 Gallons</i>	<i>1,000 Gallons</i>	<i>1,000 Gallons</i>	<i>Percent</i>	<i>Percent</i>
Frozen Products					
Ice Cream, Regular, Hard	78,091	77,869	77,557	-0.7	-0.4
Ice Cream, Lowfat, Hard	9,649	9,801	10,306	6.8	5.2
Ice Cream, Lowfat, Soft	23,543	21,674	21,614	-8.2	-0.3
Ice Cream, Lowfat, Total	33,192	31,475	31,920	-3.8	1.4
Ice Cream, Nonfat, Hard	1,682	1,607	1,324	-21.3	-17.6
Sherbet, Hard	5,111	4,582	4,572	-10.5	-0.2
Water and Juice Ices	6,798	6,232	6,476	-4.7	3.9
Frozen Yogurt, Total	5,737	6,044	5,978	4.2	-1.1
Regular & Lowfat, Hard	1,579	1,535	1,408	-10.8	-8.3
Nonfat, Hard	981	1,070	896	-8.7	-16.3
Other Frozen Dairy Products	718	936	1,180	64.3	26.1
Mix for Frozen Products					
Ice Cream Mix	44,387	44,509	43,674	-1.6	-1.9
Ice Cream, Lowfat, Mix	19,597	18,137	18,367	-6.3	1.3
Ice Cream, Nonfat, Mix	1,145	999	831	-27.4	-16.8
Sherbet Mix	3,764	3,365	3,132	-16.8	-6.9
Yogurt Mix	3,398	3,663	3,623	6.6	-1.1

<sup>1</sup> Revised.

<sup>2</sup> Includes Cheddar, Colby, Monterey, and Jack.

<sup>3</sup> Mostly used for processing into cream or lowfat cottage cheese.

<sup>4</sup> Fat content 4 percent or more.

<sup>5</sup> Fat content less than 4 percent.

<sup>6</sup> Includes protein standardized and blends.

**Whey and Modified Whey Products: Production, Stocks,  
and Prices, United States, April, 2005-2006**

Product	Apr 2005	Mar 2006 <sup>1</sup>	Apr 2006	Change From	
				Apr 2005	Mar 2006
<b>Production</b>					
	<i>1,000 Pounds</i>	<i>1,000 Pounds</i>	<i>1,000 Pounds</i>	<i>Percent</i>	<i>Percent</i>
Condensed Whey, Solids Content <sup>2</sup>					
Sweet-Type, Human	6,520	9,274	8,820	35.3	-4.9
Dry Whey Products					
Dry Whey, Human	84,013	97,315	92,678	10.3	-4.8
Dry Whey, Animal	7,247	3,924	4,521	-37.6	15.2
Dry Whey, Total	91,260	101,239	97,199	6.5	-4.0
Reduced Lactose and Minerals					
Human Food	3,644	4,046	2,354	-35.4	-41.8
Animal Feed	4,913	4,027	3,823	-22.2	-5.1
Lactose, Human and Animal	58,224	58,145	57,399	-1.4	-1.3
Whey					
Protein Concentrate					
Human <sup>3</sup>	27,828	30,586	29,569	6.3	-3.3
Animal <sup>3</sup>	4,090	5,006	5,068	23.9	1.2
Total <sup>3</sup>	31,918	35,592	34,637	8.5	-2.7
25.0-49.9 Percent <sup>4</sup>	23,704	25,866	25,294	6.7	-2.2
50.0-89.9 Percent <sup>4</sup>	8,214	9,726	9,343	13.7	-3.9
Protein Isolates <sup>5</sup>	2,159	2,619	2,480	14.9	-5.3
<b>Manufacturers' Stocks End-of-Month <sup>6</sup></b>					
	<i>1,000 Pounds</i>	<i>1,000 Pounds</i>	<i>1,000 Pounds</i>	<i>Percent</i>	<i>Percent</i>
Dry Whey Products					
Dry Whey, Human	37,398	40,461	41,747	11.6	3.2
Dry Whey, Animal	3,690	1,632	1,614	-56.3	-1.1
Dry Whey, Total	41,088	42,093	43,361	5.5	3.0
Reduced Lactose and Minerals					
Human and Animal <sup>7</sup>	4,195	6,221	5,138	22.5	-17.4
Lactose, Human and Animal	62,812	41,524	42,710	-32.0	2.9
Whey					
Protein Concentrate					
Human <sup>3</sup>	22,674	29,242	28,125	24.0	-3.8
Animal <sup>3</sup>	2,354	2,138	2,636	12.0	23.3
Total <sup>3</sup>	25,028	31,380	30,761	22.9	-2.0
25.0-49.9 Percent <sup>4</sup>	14,878	19,847	18,741	26.0	-5.6
50.0-89.9 Percent <sup>4</sup>	10,150	11,533	12,020	18.4	4.2
<b>Manufacturers' Selling Price <sup>8</sup></b>					
	<i>Cents per Pound</i>	<i>Cents per Pound</i>	<i>Cents per Pound</i>	<i>Cents Change</i>	<i>Cents Change</i>
Dry Whey, Animal	23.2	28.8	24.8	1.6	-4.0

<sup>1</sup> Revised.

<sup>2</sup> Final marketable product only. Does not include quantity used or shipped to another plant for further processing into dry whey or modified whey products. Does not include sweet-type, animal whey.

<sup>3</sup> Whey Protein Concentrate, 25.0 to 89.9 percent.

<sup>4</sup> Whey Protein Concentrate, Human and Animal.

<sup>5</sup> Whey Protein Isolate, 90.0 percent or greater.

<sup>6</sup> Stocks held by manufacturers at all points and in transit.

<sup>7</sup> Reduced lactose and minerals stocks combined to avoid disclosure of individual operations.

<sup>8</sup> Prices for bulk goods, f.o.b. plant. Average monthly prices reported by firms.

**Dairy Products: Production by Product and Month,  
United States, 2005-2006 <sup>1</sup>**

Product and Month	By Month			Cumulative		
	2005	2006	Change From 2005	2005	2006	Change From 2005
	<i>1,000 Pounds</i>	<i>1,000 Pounds</i>	<i>Percent</i>	<i>1,000 Pounds</i>	<i>1,000 Pounds</i>	<i>Percent</i>
<b>Total Cheese</b>						
Jan	753,967	772,337	2.4	753,967	772,337	2.4
Feb	704,633	720,978	2.3	1,458,600	1,493,315	2.4
Mar	797,511	812,634	1.9	2,256,111	2,305,949	2.2
Apr	754,849	779,724	3.3	3,010,960	3,085,673	2.5
May	783,943			3,794,903		
Jun	764,468			4,559,371		
Jul	739,472			5,298,843		
Aug	757,402			6,056,245		
Sep	745,485			6,801,730		
Oct	760,407			7,562,137		
Nov	766,061			8,328,198		
Dec	798,909			9,127,107		
<b>American Cheese</b>						
Jan	322,332	324,545	0.7	322,332	324,545	0.7
Feb	292,238	304,376	4.2	614,570	628,921	2.3
Mar	331,468	338,383	2.1	946,038	967,304	2.2
Apr	327,575	333,765	1.9	1,273,613	1,301,069	2.2
May	332,501			1,606,114		
Jun	321,389			1,927,503		
Jul	315,977			2,243,480		
Aug	312,028			2,555,508		
Sep	301,791			2,857,299		
Oct	312,321			3,169,620		
Nov	313,195			3,482,815		
Dec	330,135			3,812,950		
<b>Cheddar Cheese</b>						
Jan	261,868	265,809	1.5	261,868	265,809	1.5
Feb	237,987	246,344	3.5	499,855	512,153	2.5
Mar	268,668	270,553	0.7	768,523	782,706	1.8
Apr	262,787	272,281	3.6	1,031,310	1,054,987	2.3
May	265,569			1,296,879		
Jun	258,211			1,555,090		
Jul	252,709			1,807,799		
Aug	245,144			2,052,943		
Sep	239,629			2,292,572		
Oct	248,910			2,541,482		
Nov	248,464			2,789,946		
Dec	262,469			3,052,415		

See footnote(s) at end of table.

--continued

**Dairy Products: Production by Product and Month,  
United States, 2005-2006 <sup>1</sup> (continued)**

Product and Month	By Month			Cumulative		
	2005	2006	Change From 2005	2005	2006	Change From 2005
	<i>1,000 Pounds</i>	<i>1,000 Pounds</i>	<i>Percent</i>	<i>1,000 Pounds</i>	<i>1,000 Pounds</i>	<i>Percent</i>
Italian Cheese						
Jan	316,288	328,315	3.8	316,288	328,315	3.8
Feb	299,673	307,623	2.7	615,961	635,938	3.2
Mar	338,682	346,179	2.2	954,643	982,117	2.9
Apr	310,719	328,802	5.8	1,265,362	1,310,919	3.6
May	327,196			1,592,558		
Jun	319,049			1,911,607		
Jul	303,054			2,214,661		
Aug	311,518			2,526,179		
Sep	310,339			2,836,518		
Oct	311,901			3,148,419		
Nov	320,304			3,468,723		
Dec	336,007			3,804,730		
Mozzarella						
Jan	250,595	259,574	3.6	250,595	259,574	3.6
Feb	239,382	242,804	1.4	489,977	502,378	2.5
Mar	269,830	273,870	1.5	759,807	776,248	2.2
Apr	247,184	261,753	5.9	1,006,991	1,038,001	3.1
May	262,238			1,269,229		
Jun	255,540			1,524,769		
Jul	243,304			1,768,073		
Aug	244,631			2,012,704		
Sep	243,687			2,256,391		
Oct	243,671			2,500,062		
Nov	252,933			2,752,995		
Dec	267,803			3,020,798		
Other Italian						
Jan	65,693	68,741	4.6	65,693	68,741	4.6
Feb	60,291	64,819	7.5	125,984	133,560	6.0
Mar	68,852	72,309	5.0	194,836	205,869	5.7
Apr	63,535	67,049	5.5	258,371	272,918	5.6
May	64,958			323,329		
Jun	63,509			386,838		
Jul	59,750			446,588		
Aug	66,887			513,475		
Sep	66,652			580,127		
Oct	68,230			648,357		
Nov	67,371			715,728		
Dec	68,204			783,932		

See footnote(s) at end of table.

--continued

**Dairy Products: Production by Product and Month,  
United States, 2005-2006 <sup>1</sup> (continued)**

Product and Month	By Month			Cumulative		
	2005	2006	Change From 2005	2005	2006	Change From 2005
	<i>1,000 Pounds</i>	<i>1,000 Pounds</i>	<i>Percent</i>	<i>1,000 Pounds</i>	<i>1,000 Pounds</i>	<i>Percent</i>
Butter						
Jan	128,020	147,251	15.0	128,020	147,251	15.0
Feb	116,927	136,953	17.1	244,947	284,204	16.0
Mar	122,402	141,993	16.0	367,349	426,197	16.0
Apr	117,061	127,778	9.2	484,410	553,975	14.4
May	120,715			605,125		
Jun	106,559			711,684		
Jul	95,929			807,613		
Aug	93,194			900,807		
Sep	100,647			1,001,454		
Oct	108,915			1,110,369		
Nov	110,905			1,221,274		
Dec	125,953			1,347,227		
Nonfat Dry Milk, Human						
Jan	93,261	107,254	15.0	93,261	107,254	15.0
Feb	97,275	117,466	20.8	190,536	224,720	17.9
Mar	109,299	128,269	17.4	299,835	352,989	17.7
Apr	104,876	129,022	23.0	404,711	482,011	19.1
May	124,329			529,040		
Jun	124,206			653,246		
Jul	108,865			762,111		
Aug	86,679			848,790		
Sep	70,954			919,744		
Oct	73,554			993,298		
Nov	89,095			1,082,393		
Dec	103,711			1,186,104		
Total Dry Whey <sup>2</sup>						
Jan	85,936	88,243	2.7	85,936	88,243	2.7
Feb	79,665	89,713	12.6	165,601	177,956	7.5
Mar	91,775	101,239	10.3	257,376	279,195	8.5
Apr	91,260	97,199	6.5	348,636	376,394	8.0
May	94,083			442,719		
Jun	89,357			532,076		
Jul	89,143			621,219		
Aug	87,438			708,657		
Sep	83,948			792,605		
Oct	82,186			874,791		
Nov	84,844			959,635		
Dec	86,187			1,045,822		

See footnote(s) at end of table.

--continued



**Dairy Products: Production by Product and Month,  
United States, 2005-2006 <sup>1</sup> (continued)**

Product and Month	By Month			Cumulative		
	2005	2006	Change From 2005	2005	2006	Change From 2005
	<i>1,000 Pounds</i>	<i>1,000 Pounds</i>	<i>Percent</i>	<i>1,000 Pounds</i>	<i>1,000 Pounds</i>	<i>Percent</i>
Cream Cottage Cheese						
Jan	29,553	27,785	-6.0	29,553	27,785	-6.0
Feb	27,833	27,193	-2.3	57,386	54,978	-4.2
Mar	32,682	32,115	-1.7	90,068	87,093	-3.3
Apr	30,623	28,744	-6.1	120,691	115,837	-4.0
May	31,463			152,154		
Jun	32,266			184,420		
Jul	31,938			216,358		
Aug	33,782			250,140		
Sep	33,011			283,151		
Oct	30,269			313,420		
Nov	28,679			342,099		
Dec	26,058			368,157		
Lowfat Cottage Cheese						
Jan	30,843	31,617	2.5	30,843	31,617	2.5
Feb	32,060	30,818	-3.9	62,903	62,435	-0.7
Mar	35,064	35,940	2.5	97,967	98,375	0.4
Apr	32,706	32,357	-1.1	130,673	130,732	
May	34,904			165,577		
Jun	35,362			200,939		
Jul	32,436			233,375		
Aug	35,568			268,943		
Sep	34,506			303,449		
Oct	32,642			336,091		
Nov	31,406			367,497		
Dec	28,574			396,071		
	<i>1,000 Gallons</i>	<i>1,000 Gallons</i>	<i>Percent</i>	<i>1,000 Gallons</i>	<i>1,000 Gallons</i>	<i>Percent</i>
Ice Cream, Regular, Hard						
Jan	62,103	61,826	-0.4	62,103	61,826	-0.4
Feb	65,827	62,916	-4.4	127,930	124,742	-2.5
Mar	78,753	77,869	-1.1	206,683	202,611	-2.0
Apr	78,091	77,557	-0.7	284,774	280,168	-1.6
May	78,375			363,149		
Jun	91,190			454,339		
Jul	87,054			541,393		
Aug	89,142			630,535		
Sep	72,359			702,894		
Oct	69,862			772,756		
Nov	61,133			833,889		
Dec	54,854			888,743		

See footnote(s) at end of table.

--continued

**Dairy Products: Production by Product and Month,  
United States, 2005-2006 <sup>1</sup> (continued)**

Product and Month	By Month			Cumulative		
	2005	2006	Change From 2005	2005	2006	Change From 2005
	<i>1,000 Gallons</i>	<i>1,000 Gallons</i>	<i>Percent</i>	<i>1,000 Gallons</i>	<i>1,000 Gallons</i>	<i>Percent</i>
<b>Ice Cream, Lowfat</b>						
Jan	24,199	25,444	5.1	24,199	25,444	5.1
Feb	26,181	24,134	-7.8	50,380	49,578	-1.6
Mar	32,927	31,475	-4.4	83,307	81,053	-2.7
Apr	33,192	31,920	-3.8	116,499	112,973	-3.0
May	33,123			149,622		
Jun	38,572			188,194		
Jul	36,928			225,122		
Aug	35,592			260,714		
Sep	30,745			291,459		
Oct	27,013			318,472		
Nov	23,770			342,242		
Dec	21,726			363,968		
<b>Ice Cream, NF, Hard</b>						
Jan	1,205	1,330	10.4	1,205	1,330	10.4
Feb	1,715	1,254	-26.9	2,920	2,584	-11.5
Mar	1,686	1,607	-4.7	4,606	4,191	-9.0
Apr	1,682	1,324	-21.3	6,288	5,515	-12.3
May	1,730			8,018		
Jun	1,923			9,941		
Jul	2,188			12,129		
Aug	1,910			14,039		
Sep	1,611			15,650		
Oct	1,538			17,188		
Nov	1,319			18,507		
Dec	1,153			19,660		
<b>Sherbet, Hard</b>						
Jan	3,838	3,893	1.4	3,838	3,893	1.4
Feb	4,036	4,173	3.4	7,874	8,066	2.4
Mar	4,924	4,582	-6.9	12,798	12,648	-1.2
Apr	5,111	4,572	-10.5	17,909	17,220	-3.8
May	4,934			22,843		
Jun	5,825			28,668		
Jul	5,425			34,093		
Aug	5,632			39,725		
Sep	4,953			44,678		
Oct	3,724			48,402		
Nov	3,442			51,844		
Dec	3,436			55,280		

See footnote(s) at end of table.

--continued

**Dairy Products: Production by Product and Month,  
United States, 2005-2006 <sup>1</sup> (continued)**

Product and Month	By Month			Cumulative		
	2005	2006	Change From 2005	2005	2006	Change From 2005
	<i>1,000 Pounds</i>	<i>1,000 Pounds</i>	<i>Percent</i>	<i>1,000 Pounds</i>	<i>1,000 Pounds</i>	<i>Percent</i>
Sour Cream						
Jan	76,976	81,288	5.6	76,976	81,288	5.6
Feb	73,791	76,832	4.1	150,767	158,120	4.9
Mar	87,637	89,000	1.6	238,404	247,120	3.7
Apr	72,323	79,313	9.7	310,727	326,433	5.1
May	86,250			396,977		
Jun	85,798			482,775		
Jul	79,324			562,099		
Aug	90,935			653,034		
Sep	79,208			732,242		
Oct	90,019			822,261		
Nov	108,466			930,727		
Dec	99,090			1,029,817		

See footnote(s) at end of table.

--continued

**Dairy Products: Production by Product and Month,  
United States, 2005-2006 <sup>1</sup> (continued)**

Product and Month	By Month			Cumulative		
	2005	2006	Change From 2005	2005	2006	Change From 2005
	<i>1,000 Pounds</i>	<i>1,000 Pounds</i>	<i>Percent</i>	<i>1,000 Pounds</i>	<i>1,000 Pounds</i>	<i>Percent</i>
Yogurt						
Jan	224,187	252,353	12.6	224,187	252,353	12.6
Feb	236,193	238,108	0.8	460,380	490,461	6.5
Mar	275,949	280,577	1.7	736,329	771,038	4.7
Apr	247,409	254,188	2.7	983,738	1,025,226	4.2
May	264,459			1,248,197		
Jun	263,178			1,511,375		
Jul	244,608			1,755,983		
Aug	265,359			2,021,342		
Sep	273,643			2,294,985		
Oct	249,329			2,544,314		
Nov	219,567			2,763,881		
Dec	225,908			2,989,789		

See footnote(s) at end of table.

--continued

**Dairy Products: Production by Product and Month,  
United States, 2005-2006 <sup>1</sup> (continued)**

Product and Month	By Month			Cumulative		
	2005	2006	Change From 2005	2005	2006	Change From 2005
	<i>1,000 Gallons</i>	<i>1,000 Gallons</i>	<i>Percent</i>	<i>1,000 Gallons</i>	<i>1,000 Gallons</i>	<i>Percent</i>
Frozen Yogurt						
Jan	4,353	4,131	-5.1	4,353	4,131	-5.1
Feb	4,910	4,524	-7.9	9,263	8,655	-6.6
Mar	5,942	6,044	1.7	15,205	14,699	-3.3
Apr	5,737	5,978	4.2	20,942	20,677	-1.3
May	6,239			27,181		
Jun	6,412			33,593		
Jul	5,867			39,460		
Aug	6,142			45,602		
Sep	5,456			51,058		
Oct	5,114			56,172		
Nov	4,419			60,591		
Dec	4,460			65,051		

<sup>1</sup> March 2006 data revised.

<sup>2</sup> Excludes all modified dry whey products.

**Total Cheese, Excluding Cottage Cheese: Production by State and United States, April 2005-2006**

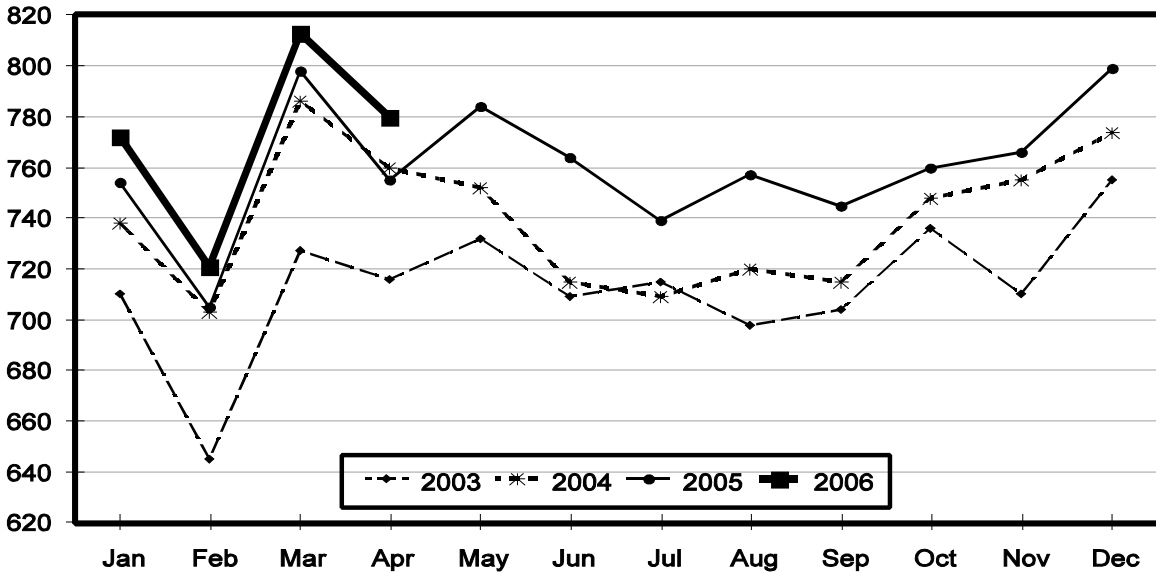
State	Apr 2005	Mar <sup>1</sup> 2006	Apr 2006	Change From	
				Apr 2005	Mar 2006
	<i>1,000 Pounds</i>	<i>1,000 Pounds</i>	<i>1,000 Pounds</i>	<i>Percent</i>	<i>Percent</i>
CA	182,284	189,056	187,282	2.7	-0.9
ID	62,314	66,202	65,898	5.8	-0.5
IL	7,356	7,824	6,651	-9.6	-15.0
IA	13,340	13,843	13,557	1.6	-2.1
MN	54,351	58,437	56,809	4.5	-2.8
NY	50,106	60,854	54,002	7.8	-11.3
OH	15,606	17,327	16,622	6.5	-4.1
PA	31,787	35,284	32,703	2.9	-7.3
SD	14,298	15,184	15,178	6.2	
UT	5,933	6,959	6,719	13.2	-3.4
WI	193,890	211,609	196,899	1.6	-7.0
Oth Sts <sup>2</sup>	123,584	130,055	127,404	3.1	-2.0
US	754,849	812,634	779,724	3.3	-4.0
N Atl	96,199	112,184	102,365	6.4	-8.8
S Atl	3,324	3,118	3,318	-0.2	6.4
E N Cen	230,654	250,432	234,077	1.5	-6.5
W N Cen	90,327	93,690	90,562	0.3	-3.3
S Cen	9,104	10,154	11,171	22.7	10.0
West	325,241	343,056	338,231	4.0	-1.4

<sup>1</sup> Revised.

<sup>2</sup> States not shown when fewer than 3 plants reported or individual plant operations could be disclosed. Percent change shown only when comparable States are included in the calculation.

## Total Cheese Production United States

Million Pounds



**American Cheese: Production by State and United States, April 2005-2006**

State	Apr 2005	Mar <sup>1</sup> 2006	Apr 2006	Change From	
				Apr 2005	Mar 2006
	<i>1,000 Pounds</i>	<i>1,000 Pounds</i>	<i>1,000 Pounds</i>	<i>Percent</i>	<i>Percent</i>
CA	73,853	73,552	71,457	-3.2	-2.8
ID	47,369	48,559	48,586	2.6	0.1
IA	10,573	10,794	10,601	0.3	-1.8
MN	50,969	54,503	52,641	3.3	-3.4
OH	3,131	3,462	3,393	8.4	-2.0
OR	10,142	9,578	9,546	-5.9	-0.3
WI	74,601	72,548	70,310	-5.8	-3.1
Oth Sts <sup>2</sup>	56,937	65,387	67,231	18.1	2.8
US	327,575	338,383	333,765	1.9	-1.4
Atlantic	12,368	11,681	12,688	2.6	8.6
E N Cen	79,005	76,768	74,598	-5.6	-2.8
W N Cen	69,313	73,118	71,108	2.6	-2.7
S Cen	4,050	4,861	5,989	47.9	23.2
West	162,839	171,955	169,382	4.0	-1.5

<sup>1</sup> Revised.

<sup>2</sup> States not shown when fewer than 3 plants reported or individual plant operations could be disclosed. Percent change shown only when comparable States are included in the calculation.

**Cheddar Cheese: Production by State and United States, April 2005-2006**

State	Apr 2005	Mar <sup>1</sup> 2006	Apr 2006	Change From	
				Apr 2005	Mar 2006
	<i>1,000 Pounds</i>	<i>1,000 Pounds</i>	<i>1,000 Pounds</i>	<i>Percent</i>	<i>Percent</i>
CA	45,901	42,838	43,733	-4.7	2.1
ID	42,985	44,886	44,690	4.0	-0.4
MN	46,165	49,479	48,794	5.7	-1.4
OH	2,230	2,255	2,270	1.8	0.7
WI	60,184	56,898	56,365	-6.3	-0.9
Oth Sts <sup>2</sup>	65,322	74,197	76,429	17.0	3.0
US	262,787	270,553	272,281	3.6	0.6
Atlantic	11,962	11,445	12,308	2.9	7.5
E N Cen	62,432	59,183	58,650	-6.1	-0.9
W N Cen	59,482	62,281	62,419	4.9	0.2
S Cen	4,050	4,861	5,988	47.9	23.2
West	124,861	132,783	132,916	6.5	0.1

<sup>1</sup> Revised.

<sup>2</sup> States not shown when fewer than 3 plants reported or individual plant operations could be disclosed. Percent change shown only when comparable States are included in the calculation.

**Italian Cheese, Total: Production by State and  
United States, April 2005-2006**

State	Apr 2005	Mar <sup>1</sup> 2006	Apr 2006	Change From	
				Apr 2005	Mar 2006
	<i>1,000 Pounds</i>	<i>1,000 Pounds</i>	<i>1,000 Pounds</i>	<i>Percent</i>	<i>Percent</i>
CA	88,434	98,056	99,939	13.0	1.9
ID	11,258	11,951	12,058	7.1	0.9
NY	29,679	35,266	30,772	3.7	-12.7
PA	23,932	23,013	22,115	-7.6	-3.9
SD	7,077	7,732	7,682	8.5	-0.6
WI	83,771	101,786	91,060	8.7	-10.5
Oth Sts <sup>2</sup>	66,568	68,375	65,176	-2.1	-4.7
US <sup>3</sup>	310,719	346,179	328,802	5.8	-5.0
Atlantic	62,851	69,354	63,058	0.3	-9.1
E N Cen	98,156	117,201	106,009	8.0	-9.5
West	136,075	145,110	144,984	6.5	-0.1

<sup>1</sup> Revised.

<sup>2</sup> States not shown when fewer than 3 plants reported or individual plant operations could be disclosed. Percent change shown only when comparable States are included in the calculation.

<sup>3</sup> Region totals may not add to U.S. when compiled regions could not be disclosed.

**Mozzarella Cheese: Production by State and United States, April 2005-2006**

State	Apr 2005	Mar <sup>1</sup> 2006	Apr 2006	Change From	
				Apr 2005	Mar 2006
	<i>1,000 Pounds</i>	<i>1,000 Pounds</i>	<i>1,000 Pounds</i>	<i>Percent</i>	<i>Percent</i>
CA	77,272	88,045	88,918	15.1	1.0
ID	9,937	10,468	10,648	7.2	1.7
NY	14,944	16,309	15,796	5.7	-3.1
PA	19,433	19,923	19,201	-1.2	-3.6
WI	62,119	75,352	66,602	7.2	-11.6
Oth Sts <sup>2</sup>	63,479	63,773	60,588	-4.6	-5.0
US <sup>3</sup>	247,184	273,870	261,753	5.9	-4.4
Atlantic	40,992	44,309	42,048	2.6	-5.1
E N Cen	74,618	87,966	79,286	6.3	-9.9
West	122,598	132,704	131,437	7.2	-1.0

<sup>1</sup> Revised.

<sup>2</sup> States not shown when fewer than 3 plants reported or individual plant operations could be disclosed. Percent change shown only when comparable States are included in the calculation.

<sup>3</sup> Region totals may not add to U.S. when compiled regions could not be disclosed.

**Butter: Production by State and United States, April 2005-2006**

State	Apr 2005	Mar <sup>1</sup> 2006	Apr 2006	Change From	
				Apr 2005	Mar 2006
	<i>1,000 Pounds</i>	<i>1,000 Pounds</i>	<i>1,000 Pounds</i>	<i>Percent</i>	<i>Percent</i>
CA	32,835	44,062	39,471	20.2	-10.4
NY	1,662	1,629	1,437	-13.5	-11.8
PA	6,441	7,554	7,163	11.2	-5.2
WI	31,610	36,373	29,320	-7.2	-19.4
Oth Sts <sup>2</sup>	44,513	52,375	50,387	13.2	-3.8
US <sup>3</sup>	117,061	141,993	127,778	9.2	-10.0
N Atl	11,731	12,049	11,642	-0.8	-3.4
E N Cen	33,968	40,889	33,263	-2.1	-18.7
W N Cen	7,151	10,706	10,977	53.5	2.5
West	49,808	63,512	58,379	17.2	-8.1

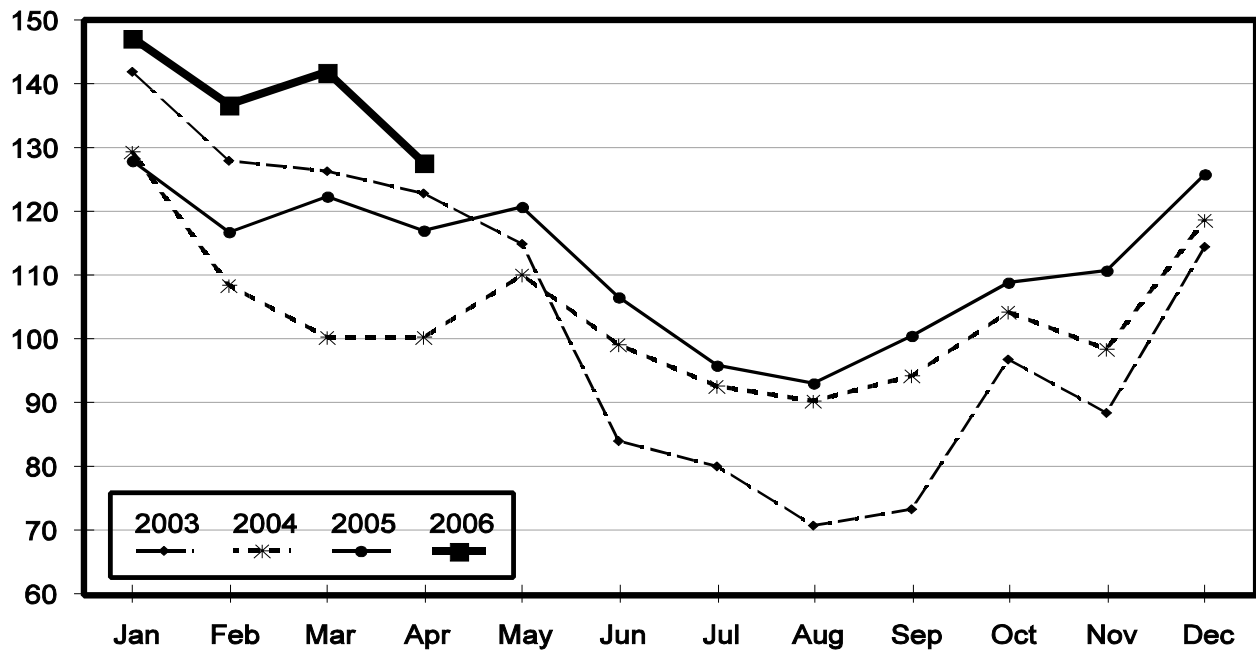
<sup>1</sup> Revised.

<sup>2</sup> States not shown when fewer than 3 plants reported or individual plant operations could be disclosed. Percent change shown only when comparable States are included in the calculation.

<sup>3</sup> Region totals may not add to U.S. when compiled regions could not be disclosed.

## Total Butter Production United States

Million Pounds





**Nonfat Dry Milk, Human: Production by State  
and United States, April 2005-2006**

State	Apr 2005	Mar <sup>1</sup> 2006	Apr 2006	Change From	
				Apr 2005	Mar 2006
	<i>1,000 Pounds</i>	<i>1,000 Pounds</i>	<i>1,000 Pounds</i>	<i>Percent</i>	<i>Percent</i>
CA	38,645	61,684	58,823	52.2	-4.6
PA	3,249	11,509	12,852	295.6	11.7
Oth Sts <sup>2</sup>	62,982	55,076	57,347	-8.9	4.1
US	104,876	128,269	129,022	23.0	0.6
Atlantic	15,182	21,202	23,997	58.1	13.2
E N Cen	6,131	4,373	5,862	-4.4	34.0
W N Cen	6,901	5,037	4,901	-29.0	-2.7
S Cen	9,368	6,680	6,310	-32.6	-5.5
West	67,294	90,977	87,952	30.7	-3.3

<sup>1</sup> Revised.

<sup>2</sup> States not shown when fewer than 3 plants reported or individual plant operations could be disclosed. Percent change shown only when comparable States are included in the calculation.

**Dry Whey, Human: Production by State  
and United States, April 2005-2006**

State	Apr 2005	Mar <sup>1</sup> 2006	Apr 2006	Change From	
				Apr 2005	Mar 2006
	<i>1,000 Pounds</i>	<i>1,000 Pounds</i>	<i>1,000 Pounds</i>	<i>Percent</i>	<i>Percent</i>
CA	10,264	9,872	8,263	-19.5	-16.3
MN	4,360	4,160	4,189	-3.9	0.7
NY	10,899	11,495	11,041	1.3	-3.9
WI	24,588	28,127	26,197	6.5	-6.9
Oth Sts <sup>2</sup>	33,902	43,661	42,988	26.8	-1.5
US	84,013	97,315	92,678	10.3	-4.8
Atlantic	19,949	21,088	20,618	3.4	-2.2
Central	38,312	42,441	40,576	5.9	-4.4
West	25,752	33,786	31,484	22.3	-6.8

<sup>1</sup> Revised.

<sup>2</sup> States not shown when fewer than 3 plants reported or individual plant operations could be disclosed. Percent change shown only when comparable States are included in the calculation.

**Ice Cream, Hard: Production by State and United States, April 2005-2006**

State	Apr 2005	Mar <sup>1</sup> 2006	Apr 2006	Change From	
				Apr 2005	Mar 2006
	<i>1,000 Gallons</i>	<i>1,000 Gallons</i>	<i>1,000 Gallons</i>	<i>Percent</i>	<i>Percent</i>
CA	10,903	12,299	10,842	-0.6	-11.8
FL	1,855	1,700	1,900	2.4	11.8
IN	8,023	7,134	7,278	-9.3	2.0
MD	2,221	1,778	1,483	-33.2	-16.6
MA	5,198	4,288	5,626	8.2	31.2
MN	3,649	3,565	3,756	2.9	5.4
MO	2,319	2,606	3,096	33.5	18.8
NY	2,624	2,360	2,560	-2.4	8.5
OH	2,161	2,030	1,905	-11.8	-6.2
OR	1,249	1,300	1,181	-5.4	-9.2
PA	3,650	3,106	2,762	-24.3	-11.1
TN	1,571	1,523	1,465	-6.7	-3.8
TX	4,299	5,076	4,628	7.7	-8.8
UT	2,149	2,228	1,927	-10.3	-13.5
Oth Sts <sup>2</sup>	26,220	26,876	27,148	3.5	1.0
US	78,091	77,869	77,557	-0.7	-0.4
N Atl	15,346	12,416	15,081	-1.7	21.5
S Atl	6,797	6,275	6,470	-4.8	3.1
E N Cen	15,108	14,858	14,313	-5.3	-3.7
W N Cen	12,959	13,982	13,355	3.1	-4.5
S Cen	9,705	11,077	10,253	5.6	-7.4
West	18,176	19,261	18,085	-0.5	-6.1

<sup>1</sup> Revised.

<sup>2</sup> States not shown when fewer than 3 plants reported or individual plant operations could be disclosed. Percent change shown only when comparable States are included in the calculation.

**Canned Milk and Dry Milk Products: Manufacturers' Shipments,  
and Stocks, April, 2005-2006**

Product	Apr 2005	Mar 2006 <sup>1</sup>	Apr 2006	Change From	
				Apr 2005	Mar 2006
	<b>Manufacturers' Shipments <sup>2</sup></b>				
	<i>1,000 Pounds</i>	<i>1,000 Pounds</i>	<i>1,000 Pounds</i>	<i>Percent</i>	<i>Percent</i>
Nonfat Dry Milk, Human	95,749	114,136	91,011	-4.9	-20.3
	<b>Manufacturers' Stocks End-of-Month <sup>3</sup></b>				
	<i>1,000 Pounds</i>	<i>1,000 Pounds</i>	<i>1,000 Pounds</i>	<i>Percent</i>	<i>Percent</i>
Canned Evaporated and Condensed Whole Milk	56,888	69,116	75,826	33.3	9.7
Nonfat Dry Milk, Human	108,222	126,521	155,861	44.0	23.2
Dry Buttermilk, Total	8,573	15,596	15,792	84.2	1.3

<sup>1</sup> Revised.

<sup>2</sup> For dry products, shipments of bulk goods only.

<sup>3</sup> Stocks held by manufacturers at all points and in transit.

**Procedures and Reliability:** Estimates included in this report are based on data provided each month by manufacturers of these products. In 32 States, the State Departments of Agriculture assist in collection of data, which eliminates duplicate reporting and reduces respondent burden. Data are collected by mail, personal and telephone interviews following the close of each month. There were 1,081 manufacturers that made one or more products in 2005. Each month, reports are generally received from all dairy plants in States with small numbers of plants. In States with large numbers of plants, survey procedures are designed to obtain monthly reports from all large plants and from a sample of small plants. Monthly estimates are based upon returns from about 70 percent of the plants which account for 70 to 90 percent of the total production of major dairy products.

**Revision Policy:** Monthly estimates are subject to revision the month following the preliminary estimates. Annual estimates are published in the "**Dairy Products**" report published each April which includes any revisions made to current and previous year. An attempt is made to get information from all plants for preparing these estimates

### Information Contacts

Listed below are the commodity specialists in the Livestock Branch of the National Agricultural Statistics Service to contact for additional information.

- Dan Kerestes, Chief Livestock Branch . . . . . (202) 720-3570
- William Weaver, Head, Livestock Section . . . . . (202) 720-3570
  - Bruce Boess - Hogs and Pigs . . . . . (202) 720-3106
  - Shawn Clark - Dairy Products . . . . . (202) 690-3236
  - Scott Hollis - Sheep & Lambs, Goats . . . . . (202) 720-4751
  - Mike Miller - Cattle, Cattle on Feed . . . . . (202) 720-3040
  - Katy Paulsen - Livestock Slaughter . . . . . (515) 284-4340
  - Ann Summa - Milk Production and Milk Cows . . . . . (202) 720-3278
  - Charmaine Wilson - Dairy Products Prices . . . . . (202) 690-2168

## ACCESS TO REPORTS!!

---

For your convenience, there are several ways to obtain NASS reports, data products, and services:

### INTERNET ACCESS

All NASS reports are available free of charge on the worldwide Internet. For access, connect to the Internet and go to the NASS Home Page at: [www.nass.usda.gov](http://www.nass.usda.gov).

### E-MAIL SUBSCRIPTION

All NASS reports are available by subscription free of charge direct to your e-mail address. Starting with the NASS Home Page at [www.nass.usda.gov](http://www.nass.usda.gov), under the right navigation, *Receive reports by Email*, click on **National** or **State**. Follow the instructions on the screen.

-----

### PRINTED REPORTS OR DATA PRODUCTS

**CALL OUR TOLL-FREE ORDER DESK: 800-999-6779 (U.S. and Canada)**  
**Other areas, please call 703-605-6220      FAX: 703-605-6900**  
**(Visa, MasterCard, check, or money order acceptable for payment.)**

-----

### ASSISTANCE

For **assistance** with general agricultural statistics or further information about NASS or its products or services, contact the **Agricultural Statistics Hotline** at **800-727-9540**, 7:30 a.m. to 4:00 p.m. ET, or e-mail: [nass@nass.usda.gov](mailto:nass@nass.usda.gov).

The U.S. Department of Agriculture (USDA) prohibits discrimination in all its programs and activities on the basis of race, color, national origin, age, disability, and where applicable, sex, marital status, familial status, parental status, religion, sexual orientation, genetic information, political beliefs, reprisal, or because all or part of an individual's income is derived from any public assistance program. (Not all prohibited bases apply to all programs.) Persons with disabilities who require alternative means for communication of program information (Braille, large print, audiotape, etc.) should contact USDA's TARGET Center at (202) 720-2600 (voice and TDD).

To file a complaint of discrimination, write to USDA, Director, Office of Civil Rights, 1400 Independence Avenue, S.W., Washington, D.C. 20250-9410, or call (800) 795-3272 (voice) or (202) 720-6382 (TDD). USDA is an equal opportunity provider and employer.