



NASS

FACT FINDERS FOR AGRICULTURE
UNITED STATES DEPARTMENT OF AGRICULTURE

Washington, D.C.

Dairy Products

Released July 3, 2006, by the National Agricultural Statistics Service (NASS), Agricultural Statistics Board, U.S. Department of Agriculture. For information on *Dairy Products* call Shawn Clark at (202) 690-3236, office hours 7:30 a.m. to 4:00 p.m. ET.

May 2006 Highlights

Total cheese output (excluding cottage cheese) was 807 million pounds, 3.0 percent above May 2005 and 2.6 percent above April 2006.

Italian type cheese production totaled 332 million pounds, 1.5 percent above May 2005 and 1.1 percent above April 2006.

American type cheese production totaled 346 million pounds, 4.0 percent above May 2005 and 2.1 percent above April 2006.

Butter production was 129 million pounds, 7.3 percent above May 2005 and 1 percent above April 2006.

Frozen dessert: (comparisons with May 2005)

Ice cream, Regular (hard) --- 82.1 million gallons, up 4.7 percent.

Ice cream, Lowfat (total) --- 37.1 million gallons, up 12.1 percent.

Ice cream, Nonfat (hard) --- 1.49 million gallons, down 14.1 percent.

Sherbet (hard) --- 4.77 million gallons, down 3.3 percent.

Frozen Yogurt (total) --- 6.64 million gallons, up 6.4 percent.

Nonfat dry milk for human food: (compared with May 2005) --- 132 million pounds, up 6.0 percent.

Dry whey products: (comparisons with May 2005)

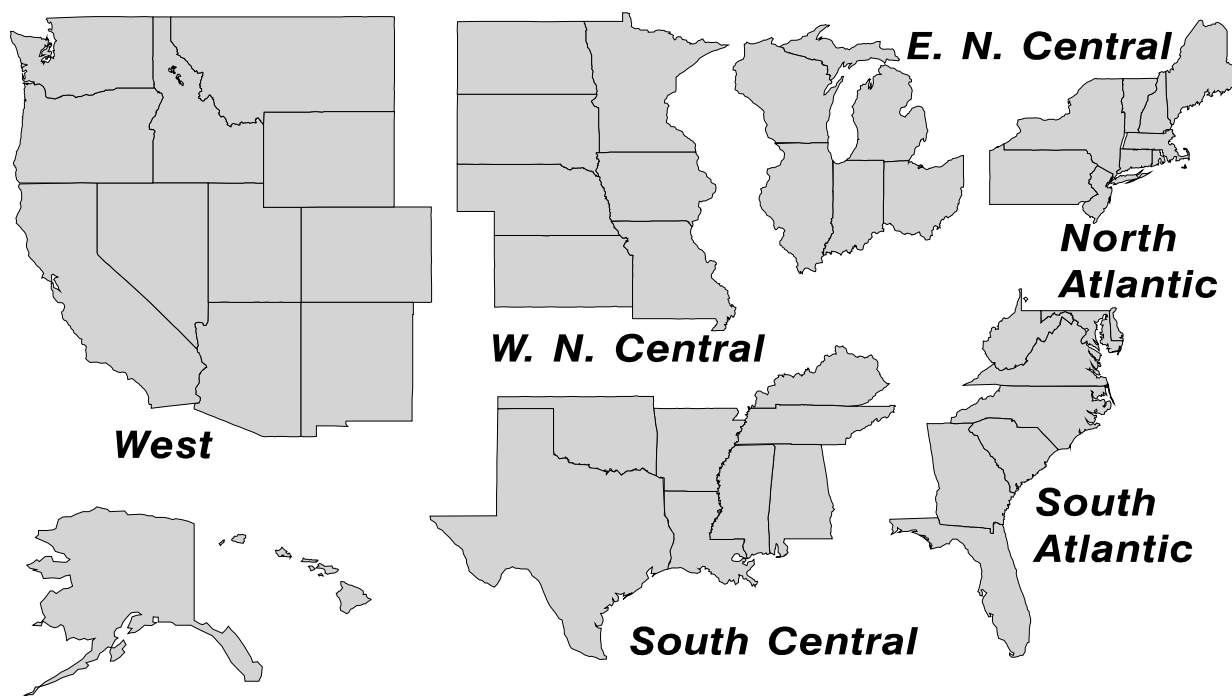
Dry whey, human --- 94.6 million pounds, up 9.1 percent.

Dry whey, animal --- 5.05 million pounds, down 32.0 percent.

Dry whey, total --- 99.6 million pounds, up 5.9 percent.

U. S. Geographic Regions Dairy Products

State totals are not published when fewer than 3 firms have reported or one firm comprises more than 60 percent of the State total. If we are not able to publish a region for confidentiality reasons, it will be combined with other regions when possible. For example, if North Atlantic can not be published, then it will be combined with South Atlantic to publish Atlantic. The West North Central and East North Central will be combined, if necessary, to form North Central. In the event that neither could be published, they may be combined with South Central to publish Central. Some tables will have only limited regions shown, therefore the regions may not add to the United States total.



Contents

Page

Dairy Products: Production by Product, United States	1
Whey and Modified Whey Products: Production, Stocks, and Prices, United States	2
Dairy Products: Production by Product and Month, United States	3
Select Commodities by State and United States	10
Canned Milk and Dry Milk Products: Manufacturer's Shipments, Stocks, and Selling Prices	15
Procedures and Reliability	16
Information Contacts	16

**Dairy Products: Production by Product,
United States, May, 2005-2006**

Product	May 2005	Apr 2006 ¹	May 2006	Change From	
				May 2005	Apr 2006
	<i>1,000 Pounds</i>	<i>1,000 Pounds</i>	<i>1,000 Pounds</i>	<i>Percent</i>	<i>Percent</i>
Butter	120,715	128,457	129,468	7.3	0.8
Cheese					
American Types ²	332,501	338,715	345,886	4.0	2.1
Cheddar	265,569	273,664	274,672	3.4	0.4
Swiss	25,622	25,369	26,524	3.5	4.6
Brick and Muenster	6,240	8,711	8,819	41.3	1.2
Cream and Neufchatel	51,230	49,695	55,601	8.5	11.9
Hispanic	13,917	14,633	14,088	1.2	-3.7
Mozzarella	262,238	261,653	265,599	1.3	1.5
Other Italian Types	64,958	66,935	66,655	2.6	-0.4
Total Italian Types	327,196	328,588	332,254	1.5	1.1
All Other Types	27,237	20,766	23,976	-12.0	15.5
Total	783,943	786,477	807,148	3.0	2.6
Cottage Cheese, Curd ³	38,913	36,625	38,884	-0.1	6.2
Cottage Cheese, Cream ⁴	31,463	28,580	31,140	-1.0	9.0
Cottage Cheese, Lowfat ⁵	34,904	31,668	35,102	0.6	10.8
Canned Evaporated and Condensed Whole Milk	49,133	41,707	43,685	-11.1	4.7
Dry Whole Milk	3,144	1,590	2,431	-22.7	52.9
Nonfat Dry Milk, Human Skim Milk Powders ⁶	124,329	129,225	131,799	6.0	2.0
Dry Skim Milk, Animal	21,703	12,411	18,144	-16.4	46.2
Dry Skim Milk, Animal	707	515	606	-14.3	17.7
Dry Buttermilk	6,035	6,525	5,778	-4.3	-11.4
Sour Cream	86,250	79,298	91,852	6.5	15.8
Yogurt, Plain & Flavored	264,459	254,096	267,523	1.2	5.3
	<i>1,000 Gallons</i>	<i>1,000 Gallons</i>	<i>1,000 Gallons</i>	<i>Percent</i>	<i>Percent</i>
Frozen Products					
Ice Cream, Regular, Hard	78,375	77,408	82,064	4.7	6.0
Ice Cream, Lowfat, Hard	8,687	10,306	10,968	26.3	6.4
Ice Cream, Lowfat, Soft	24,436	21,748	26,171	7.1	20.3
Ice Cream, Lowfat, Total	33,123	32,054	37,139	12.1	15.9
Ice Cream, Nonfat, Hard	1,730	1,324	1,486	-14.1	12.2
Sherbet, Hard	4,934	4,557	4,769	-3.3	4.7
Water and Juice Ices	6,672	6,476	6,302	-5.5	-2.7
Frozen Yogurt, Total	6,239	5,960	6,638	6.4	11.4
Regular & Lowfat, Hard	1,764	1,409	1,385	-21.5	-1.7
Nonfat, Hard	1,102	896	933	-15.3	4.1
Other Frozen Dairy Products	674	1,180	1,140	69.1	-3.4
Mix for Frozen Products					
Ice Cream Mix	44,652	43,553	46,537	4.2	6.9
Ice Cream, Lowfat, Mix	19,558	18,447	21,444	9.6	16.2
Ice Cream, Nonfat, Mix	1,115	831	910	-18.4	9.5
Sherbet Mix	3,551	3,061	3,371	-5.1	10.1
Yogurt Mix	3,859	3,612	4,023	4.2	11.4

¹ Revised.

² Includes Cheddar, Colby, Monterey, and Jack.

³ Mostly used for processing into cream or lowfat cottage cheese.

⁴ Fat content 4 percent or more.

⁵ Fat content less than 4 percent.

⁶ Includes protein standardized and blends.

**Whey and Modified Whey Products: Production, Stocks,
and Prices, United States, May, 2005-2006**

Product	May 2005	Apr 2006 ¹	May 2006	Change From	
				May 2005	Apr 2006
Production					
	<i>1,000 Pounds</i>	<i>1,000 Pounds</i>	<i>1,000 Pounds</i>	<i>Percent</i>	<i>Percent</i>
Condensed Whey, Solids Content ²					
Sweet-Type, Human	7,264	8,820	8,095	11.4	-8.2
Dry Whey Products					
Dry Whey, Human	86,652	91,850	94,557	9.1	2.9
Dry Whey, Animal	7,431	4,489	5,052	-32.0	12.5
Dry Whey, Total	94,083	96,339	99,609	5.9	3.4
Reduced Lactose and Minerals					
Human Food	3,933	3,354	3,816	-3.0	13.8
Animal Feed	5,325	3,823	4,103	-22.9	7.3
Lactose, Human and Animal	58,095	58,106	60,460	4.1	4.1
Whey					
Protein Concentrate					
Human ³	25,975	30,411	30,658	18.0	0.8
Animal ³	4,311	5,166	4,949	14.8	-4.2
Total ³	30,286	35,577	35,607	17.6	0.1
25.0-49.9 Percent ⁴	22,650	25,294	25,825	14.0	2.1
50.0-89.9 Percent ⁴	7,636	10,283	9,782	28.1	-4.9
Protein Isolates ⁵	2,151	2,332	2,249	4.6	-3.6
Manufacturers' Stocks End-of-Month ⁶					
	<i>1,000 Pounds</i>	<i>1,000 Pounds</i>	<i>1,000 Pounds</i>	<i>Percent</i>	<i>Percent</i>
Dry Whey Products					
Dry Whey, Human	36,233	41,719	40,817	12.7	-2.2
Dry Whey, Animal	3,293	1,614	2,612	-20.7	61.8
Dry Whey, Total	39,526	43,333	43,429	9.9	0.2
Reduced Lactose and Minerals					
Human and Animal ⁷	4,620	5,138	5,612	21.5	9.2
Lactose, Human and Animal	62,023	42,752	41,031	-33.8	-4.0
Whey					
Protein Concentrate					
Human ³	22,148	28,125	28,834	30.2	2.5
Animal ³	2,423	2,666	2,256	-6.9	-15.4
Total ³	24,571	30,791	31,090	26.5	1.0
25.0-49.9 Percent ⁴	14,444	18,741	19,128	32.4	2.1
50.0-89.9 Percent ⁴	10,127	12,050	11,962	18.1	-0.7
Manufacturers' Selling Price ⁸					
	<i>Cents per Pound</i>	<i>Cents per Pound</i>	<i>Cents per Pound</i>	<i>Cents Change</i>	<i>Cents Change</i>
Dry Whey, Animal	24.1	24.8	22.5	-1.6	-2.3

¹ Revised.

² Final marketable product only. Does not include quantity used or shipped to another plant for further processing into dry whey or modified whey products. Does not include sweet-type, animal whey.

³ Whey Protein Concentrate, 25.0 to 89.9 percent.

⁴ Whey Protein Concentrate, Human and Animal.

⁵ Whey Protein Isolate, 90.0 percent or greater.

⁶ Stocks held by manufacturers at all points and in transit.

⁷ Reduced lactose and minerals stocks combined to avoid disclosure of individual operations.

⁸ Prices for bulk goods, f.o.b. plant. Average monthly prices reported by firms.

**Dairy Products: Production by Product and Month,
United States, 2005-2006 ¹**

Product and Month	By Month			Cumulative		
	2005	2006	Change From 2005	2005	2006	Change From 2005
	<i>1,000 Pounds</i>	<i>1,000 Pounds</i>	<i>Percent</i>	<i>1,000 Pounds</i>	<i>1,000 Pounds</i>	<i>Percent</i>
Total Cheese						
Jan	753,967	772,337	2.4	753,967	772,337	2.4
Feb	704,633	720,978	2.3	1,458,600	1,493,315	2.4
Mar	797,511	812,634	1.9	2,256,111	2,305,949	2.2
Apr	754,849	786,477	4.2	3,010,960	3,092,426	2.7
May	783,943	807,148	3.0	3,794,903	3,899,574	2.8
Jun	764,468			4,559,371		
Jul	739,472			5,298,843		
Aug	757,402			6,056,245		
Sep	745,485			6,801,730		
Oct	760,407			7,562,137		
Nov	766,061			8,328,198		
Dec	798,909			9,127,107		
American Cheese						
Jan	322,332	324,545	0.7	322,332	324,545	0.7
Feb	292,238	304,376	4.2	614,570	628,921	2.3
Mar	331,468	338,383	2.1	946,038	967,304	2.2
Apr	327,575	338,715	3.4	1,273,613	1,306,019	2.5
May	332,501	345,886	4.0	1,606,114	1,651,905	2.9
Jun	321,389			1,927,503		
Jul	315,977			2,243,480		
Aug	312,028			2,555,508		
Sep	301,791			2,857,299		
Oct	312,321			3,169,620		
Nov	313,195			3,482,815		
Dec	330,135			3,812,950		
Cheddar Cheese						
Jan	261,868	265,809	1.5	261,868	265,809	1.5
Feb	237,987	246,344	3.5	499,855	512,153	2.5
Mar	268,668	270,553	0.7	768,523	782,706	1.8
Apr	262,787	273,664	4.1	1,031,310	1,056,370	2.4
May	265,569	274,672	3.4	1,296,879	1,331,042	2.6
Jun	258,211			1,555,090		
Jul	252,709			1,807,799		
Aug	245,144			2,052,943		
Sep	239,629			2,292,572		
Oct	248,910			2,541,482		
Nov	248,464			2,789,946		
Dec	262,469			3,052,415		

See footnote(s) at end of table.

--continued

**Dairy Products: Production by Product and Month,
United States, 2005-2006 ¹ (continued)**

Product and Month	By Month			Cumulative		
	2005	2006	Change From 2005	2005	2006	Change From 2005
	<i>1,000 Pounds</i>	<i>1,000 Pounds</i>	<i>Percent</i>	<i>1,000 Pounds</i>	<i>1,000 Pounds</i>	<i>Percent</i>
Italian Cheese						
Jan	316,288	328,315	3.8	316,288	328,315	3.8
Feb	299,673	307,623	2.7	615,961	635,938	3.2
Mar	338,682	346,179	2.2	954,643	982,117	2.9
Apr	310,719	328,588	5.8	1,265,362	1,310,705	3.6
May	327,196	332,254	1.5	1,592,558	1,642,959	3.2
Jun	319,049			1,911,607		
Jul	303,054			2,214,661		
Aug	311,518			2,526,179		
Sep	310,339			2,836,518		
Oct	311,901			3,148,419		
Nov	320,304			3,468,723		
Dec	336,007			3,804,730		
Mozzarella						
Jan	250,595	259,574	3.6	250,595	259,574	3.6
Feb	239,382	242,804	1.4	489,977	502,378	2.5
Mar	269,830	273,870	1.5	759,807	776,248	2.2
Apr	247,184	261,653	5.9	1,006,991	1,037,901	3.1
May	262,238	265,599	1.3	1,269,229	1,303,500	2.7
Jun	255,540			1,524,769		
Jul	243,304			1,768,073		
Aug	244,631			2,012,704		
Sep	243,687			2,256,391		
Oct	243,671			2,500,062		
Nov	252,933			2,752,995		
Dec	267,803			3,020,798		
Other Italian						
Jan	65,693	68,741	4.6	65,693	68,741	4.6
Feb	60,291	64,819	7.5	125,984	133,560	6.0
Mar	68,852	72,309	5.0	194,836	205,869	5.7
Apr	63,535	66,935	5.4	258,371	272,804	5.6
May	64,958	66,655	2.6	323,329	339,459	5.0
Jun	63,509			386,838		
Jul	59,750			446,588		
Aug	66,887			513,475		
Sep	66,652			580,127		
Oct	68,230			648,357		
Nov	67,371			715,728		
Dec	68,204			783,932		

See footnote(s) at end of table.

--continued

**Dairy Products: Production by Product and Month,
United States, 2005-2006 ¹ (continued)**

Product and Month	By Month			Cumulative		
	2005	2006	Change From 2005	2005	2006	Change From 2005
	<i>1,000 Pounds</i>	<i>1,000 Pounds</i>	<i>Percent</i>	<i>1,000 Pounds</i>	<i>1,000 Pounds</i>	<i>Percent</i>
Butter						
Jan	128,020	147,251	15.0	128,020	147,251	15.0
Feb	116,927	136,953	17.1	244,947	284,204	16.0
Mar	122,402	141,993	16.0	367,349	426,197	16.0
Apr	117,061	128,457	9.7	484,410	554,654	14.5
May	120,715	129,468	7.3	605,125	684,122	13.1
Jun	106,559			711,684		
Jul	95,929			807,613		
Aug	93,194			900,807		
Sep	100,647			1,001,454		
Oct	108,915			1,110,369		
Nov	110,905			1,221,274		
Dec	125,953			1,347,227		
Nonfat Dry Milk, Human						
Jan	93,261	107,254	15.0	93,261	107,254	15.0
Feb	97,275	117,466	20.8	190,536	224,720	17.9
Mar	109,299	128,269	17.4	299,835	352,989	17.7
Apr	104,876	129,225	23.2	404,711	482,214	19.2
May	124,329	131,799	6.0	529,040	614,013	16.1
Jun	124,206			653,246		
Jul	108,865			762,111		
Aug	86,679			848,790		
Sep	70,954			919,744		
Oct	73,554			993,298		
Nov	89,095			1,082,393		
Dec	103,711			1,186,104		
Total Dry Whey ²						
Jan	85,936	88,243	2.7	85,936	88,243	2.7
Feb	79,665	89,713	12.6	165,601	177,956	7.5
Mar	91,775	101,239	10.3	257,376	279,195	8.5
Apr	91,260	96,339	5.6	348,636	375,534	7.7
May	94,083	99,609	5.9	442,719	475,143	7.3
Jun	89,357			532,076		
Jul	89,143			621,219		
Aug	87,438			708,657		
Sep	83,948			792,605		
Oct	82,186			874,791		
Nov	84,844			959,635		
Dec	86,187			1,045,822		

See footnote(s) at end of table.

--continued

**Dairy Products: Production by Product and Month,
United States, 2005-2006 ¹ (continued)**

Product and Month	By Month			Cumulative		
	2005	2006	Change From 2005	2005	2006	Change From 2005
	<i>1,000 Pounds</i>	<i>1,000 Pounds</i>	<i>Percent</i>	<i>1,000 Pounds</i>	<i>1,000 Pounds</i>	<i>Percent</i>
Cream Cottage Cheese						
Jan	29,553	27,785	-6.0	29,553	27,785	-6.0
Feb	27,833	27,193	-2.3	57,386	54,978	-4.2
Mar	32,682	32,115	-1.7	90,068	87,093	-3.3
Apr	30,623	28,580	-6.7	120,691	115,673	-4.2
May	31,463	31,140	-1.0	152,154	146,813	-3.5
Jun	32,266			184,420		
Jul	31,938			216,358		
Aug	33,782			250,140		
Sep	33,011			283,151		
Oct	30,269			313,420		
Nov	28,679			342,099		
Dec	26,058			368,157		
Lowfat Cottage Cheese						
Jan	30,843	31,617	2.5	30,843	31,617	2.5
Feb	32,060	30,818	-3.9	62,903	62,435	-0.7
Mar	35,064	35,940	2.5	97,967	98,375	0.4
Apr	32,706	31,668	-3.2	130,673	130,043	-0.5
May	34,904	35,102	0.6	165,577	165,145	-0.3
Jun	35,362			200,939		
Jul	32,436			233,375		
Aug	35,568			268,943		
Sep	34,506			303,449		
Oct	32,642			336,091		
Nov	31,406			367,497		
Dec	28,574			396,071		
	<i>1,000 Gallons</i>	<i>1,000 Gallons</i>	<i>Percent</i>	<i>1,000 Gallons</i>	<i>1,000 Gallons</i>	<i>Percent</i>
Ice Cream, Regular, Hard						
Jan	62,103	61,826	-0.4	62,103	61,826	-0.4
Feb	65,827	62,916	-4.4	127,930	124,742	-2.5
Mar	78,753	77,869	-1.1	206,683	202,611	-2.0
Apr	78,091	77,408	-0.9	284,774	280,019	-1.7
May	78,375	82,064	4.7	363,149	362,083	-0.3
Jun	91,190			454,339		
Jul	87,054			541,393		
Aug	89,142			630,535		
Sep	72,359			702,894		
Oct	69,862			772,756		
Nov	61,133			833,889		
Dec	54,854			888,743		

See footnote(s) at end of table.

--continued

**Dairy Products: Production by Product and Month,
United States, 2005-2006 ¹ (continued)**

Product and Month	By Month			Cumulative		
	2005	2006	Change From 2005	2005	2006	Change From 2005
	<i>1,000 Gallons</i>	<i>1,000 Gallons</i>	<i>Percent</i>	<i>1,000 Gallons</i>	<i>1,000 Gallons</i>	<i>Percent</i>
Ice Cream, Lowfat						
Jan	24,199	25,444	5.1	24,199	25,444	5.1
Feb	26,181	24,134	-7.8	50,380	49,578	-1.6
Mar	32,927	31,475	-4.4	83,307	81,053	-2.7
Apr	33,192	32,054	-3.4	116,499	113,107	-2.9
May	33,123	37,139	12.1	149,622	150,246	0.4
Jun	38,572			188,194		
Jul	36,928			225,122		
Aug	35,592			260,714		
Sep	30,745			291,459		
Oct	27,013			318,472		
Nov	23,770			342,242		
Dec	21,726			363,968		
Ice Cream, NF, Hard						
Jan	1,205	1,330	10.4	1,205	1,330	10.4
Feb	1,715	1,254	-26.9	2,920	2,584	-11.5
Mar	1,686	1,607	-4.7	4,606	4,191	-9.0
Apr	1,682	1,324	-21.3	6,288	5,515	-12.3
May	1,730	1,486	-14.1	8,018	7,001	-12.7
Jun	1,923			9,941		
Jul	2,188			12,129		
Aug	1,910			14,039		
Sep	1,611			15,650		
Oct	1,538			17,188		
Nov	1,319			18,507		
Dec	1,153			19,660		
Sherbet, Hard						
Jan	3,838	3,893	1.4	3,838	3,893	1.4
Feb	4,036	4,173	3.4	7,874	8,066	2.4
Mar	4,924	4,582	-6.9	12,798	12,648	-1.2
Apr	5,111	4,557	-10.8	17,909	17,205	-3.9
May	4,934	4,769	-3.3	22,843	21,974	-3.8
Jun	5,825			28,668		
Jul	5,425			34,093		
Aug	5,632			39,725		
Sep	4,953			44,678		
Oct	3,724			48,402		
Nov	3,442			51,844		
Dec	3,436			55,280		

See footnote(s) at end of table.

--continued

**Dairy Products: Production by Product and Month,
United States, 2005-2006 ¹ (continued)**

Product and Month	By Month			Cumulative		
	2005	2006	Change From 2005	2005	2006	Change From 2005
	<i>1,000 Pounds</i>	<i>1,000 Pounds</i>	<i>Percent</i>	<i>1,000 Pounds</i>	<i>1,000 Pounds</i>	<i>Percent</i>
Sour Cream						
Jan	76,976	81,288	5.6	76,976	81,288	5.6
Feb	73,791	76,832	4.1	150,767	158,120	4.9
Mar	87,637	89,000	1.6	238,404	247,120	3.7
Apr	72,323	79,298	9.6	310,727	326,418	5.0
May	86,250	91,852	6.5	396,977	418,270	5.4
Jun	85,798			482,775		
Jul	79,324			562,099		
Aug	90,935			653,034		
Sep	79,208			732,242		
Oct	90,019			822,261		
Nov	108,466			930,727		
Dec	99,090			1,029,817		

See footnote(s) at end of table.

--continued

**Dairy Products: Production by Product and Month,
United States, 2005-2006 ¹ (continued)**

Product and Month	By Month			Cumulative		
	2005	2006	Change From 2005	2005	2006	Change From 2005
	<i>1,000 Pounds</i>	<i>1,000 Pounds</i>	<i>Percent</i>	<i>1,000 Pounds</i>	<i>1,000 Pounds</i>	<i>Percent</i>
Yogurt						
Jan	224,187	252,353	12.6	224,187	252,353	12.6
Feb	236,193	238,108	0.8	460,380	490,461	6.5
Mar	275,949	280,577	1.7	736,329	771,038	4.7
Apr	247,409	254,096	2.7	983,738	1,025,134	4.2
May	264,459	267,523	1.2	1,248,197	1,292,657	3.6
Jun	263,178			1,511,375		
Jul	244,608			1,755,983		
Aug	265,359			2,021,342		
Sep	273,643			2,294,985		
Oct	249,329			2,544,314		
Nov	219,567			2,763,881		
Dec	225,908			2,989,789		

See footnote(s) at end of table.

--continued

**Dairy Products: Production by Product and Month,
United States, 2005-2006 ¹ (continued)**

Product and Month	By Month			Cumulative		
	2005	2006	Change From 2005	2005	2006	Change From 2005
	<i>1,000 Gallons</i>	<i>1,000 Gallons</i>	<i>Percent</i>	<i>1,000 Gallons</i>	<i>1,000 Gallons</i>	<i>Percent</i>
Frozen Yogurt						
Jan	4,353	4,131	-5.1	4,353	4,131	-5.1
Feb	4,910	4,524	-7.9	9,263	8,655	-6.6
Mar	5,942	6,044	1.7	15,205	14,699	-3.3
Apr	5,737	5,960	3.9	20,942	20,659	-1.4
May	6,239	6,638	6.4	27,181	27,297	0.4
Jun	6,412			33,593		
Jul	5,867			39,460		
Aug	6,142			45,602		
Sep	5,456			51,058		
Oct	5,114			56,172		
Nov	4,419			60,591		
Dec	4,460			65,051		

¹ April 2006 data revised.

² Excludes all modified dry whey products.

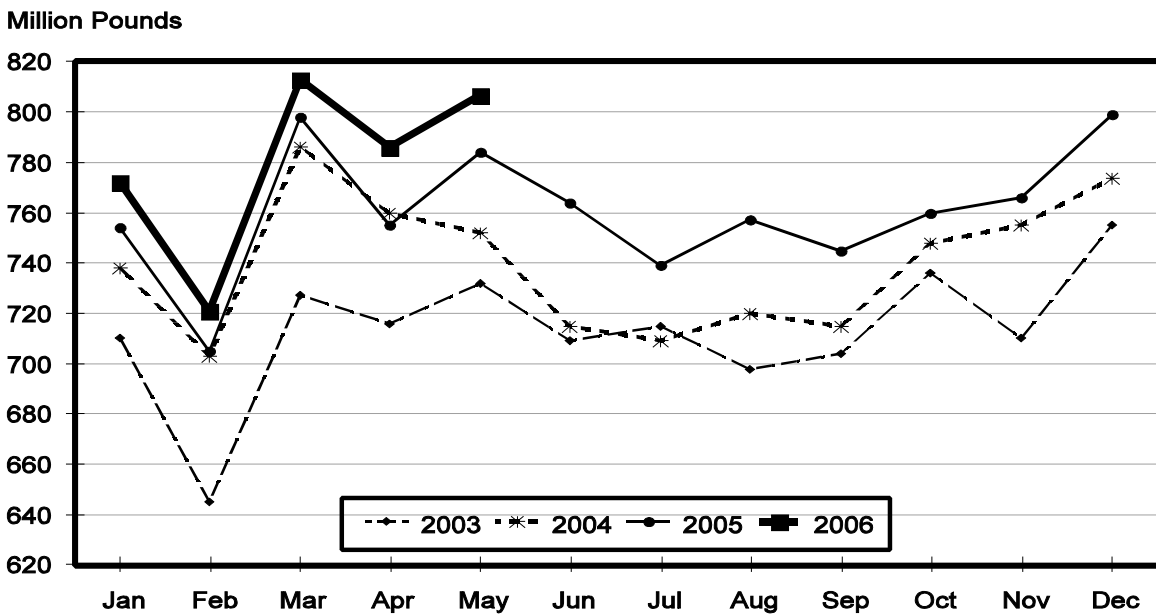
Total Cheese, Excluding Cottage Cheese: Production by State and United States, May 2005-2006

State	May 2005	Apr ¹ 2006	May 2006	Change From	
				May 2005	Apr 2006
	<i>1,000 Pounds</i>	<i>1,000 Pounds</i>	<i>1,000 Pounds</i>	<i>Percent</i>	<i>Percent</i>
CA	187,427	187,698	186,523	-0.5	-0.6
ID	63,539	65,896	69,563	9.5	5.6
IL	7,854	6,651	6,277	-20.1	-5.6
IA	13,972	13,465	14,146	1.2	5.1
MN	55,333	54,252	55,125	-0.4	1.6
NY	54,595	54,002	56,532	3.5	4.7
OH	16,906	16,612	18,308	8.3	10.2
PA	33,737	32,703	31,006	-8.1	-5.2
SD	15,849	15,178	15,832	-0.1	4.3
UT	6,043	6,148	6,411	6.1	4.3
WI	204,138	197,140	208,139	2.0	5.6
Oth Sts ²	124,550	136,732	139,286	11.8	1.9
US	783,943	786,477	807,148	3.0	2.6
N Atl	104,251	102,364	102,173	-2.0	-0.2
S Atl	3,108	3,318	2,980	-4.1	-10.2
E N Cen	243,593	234,308	246,810	1.3	5.3
W N Cen	91,988	88,012	90,452	-1.7	2.8
S Cen	8,338	11,171	9,391	12.6	-15.9
West	332,665	347,304	355,342	6.8	2.3

¹ Revised.

² States not shown when fewer than 3 plants reported or individual plant operations could be disclosed. Percent change shown only when comparable States are included in the calculation.

Total Cheese Production United States



American Cheese: Production by State and United States, May 2005-2006

State	May 2005	Apr ¹ 2006	May 2006	Change From	
				May 2005	Apr 2006
	<i>1,000 Pounds</i>	<i>1,000 Pounds</i>	<i>1,000 Pounds</i>	<i>Percent</i>	<i>Percent</i>
CA	76,658	71,457	70,964	-7.4	-0.7
ID	46,660	48,586	49,846	6.8	2.6
IA	10,984	10,452	11,116	1.2	6.4
MN	51,755	50,186	51,116	-1.2	1.9
OH	3,366	3,393	3,869	14.9	14.0
OR	10,121	9,546	9,348	-7.6	-2.1
WI	75,496	70,583	73,700	-2.4	4.4
Oth Sts ²	57,461	74,512	75,927	32.1	1.9
US	332,501	338,715	345,886	4.0	2.1
Atlantic	12,503	12,688	13,375	7.0	5.4
E N Cen	79,880	74,871	78,396	-1.9	4.7
W N Cen	70,914	68,603	70,173	-1.0	2.3
S Cen	3,533	5,989	3,645	3.2	-39.1
West	165,671	176,564	180,297	8.8	2.1

¹ Revised.

² States not shown when fewer than 3 plants reported or individual plant operations could be disclosed. Percent change shown only when comparable States are included in the calculation.

Cheddar Cheese: Production by State and United States, May 2005-2006

State	May 2005	Apr ¹ 2006	May 2006	Change From	
				May 2005	Apr 2006
	<i>1,000 Pounds</i>	<i>1,000 Pounds</i>	<i>1,000 Pounds</i>	<i>Percent</i>	<i>Percent</i>
CA	46,374	43,733	42,552	-8.2	-2.7
ID	42,954	44,690	46,183	7.5	3.3
MN	46,867	46,202	45,656	-2.6	-1.2
OH	2,275	2,270	2,765	21.5	21.8
WI	60,884	57,255	57,400	-5.7	0.3
Oth Sts ²	66,215	79,514	80,116	21.0	0.8
US	265,569	273,664	274,672	3.4	0.4
Atlantic	12,014	12,308	13,024	8.4	5.8
E N Cen	63,173	59,540	60,184	-4.7	1.1
W N Cen	59,832	59,919	59,508	-0.5	-0.7
S Cen	3,533	5,988	3,645	3.2	-39.1
West	127,017	135,909	138,311	8.9	1.8

¹ Revised.

² States not shown when fewer than 3 plants reported or individual plant operations could be disclosed. Percent change shown only when comparable States are included in the calculation.

**Italian Cheese, Total: Production by State and
United States, May 2005-2006**

State	May 2005	Apr ¹ 2006	May 2006	Change From	
				May 2005	Apr 2006
	<i>1,000 Pounds</i>	<i>1,000 Pounds</i>	<i>1,000 Pounds</i>	<i>Percent</i>	<i>Percent</i>
CA	91,239	99,939	98,826	8.3	-1.1
ID	13,601	12,058	13,862	1.9	15.0
NY	31,029	30,772	31,724	2.2	3.1
PA	22,596	22,115	20,038	-11.3	-9.4
SD	8,352	7,682	8,334	-0.2	8.5
WI	91,108	90,959	94,457	3.7	3.8
Oth Sts ²	69,271	65,063	65,013	-6.1	-0.1
US ³	327,196	328,588	332,254	1.5	1.1
Atlantic	64,399	63,057	60,238	-6.5	-4.5
E N Cen	106,495	105,898	109,794	3.1	3.7
West	141,379	144,984	147,181	4.1	1.5

¹ Revised.

² States not shown when fewer than 3 plants reported or individual plant operations could be disclosed. Percent change shown only when comparable States are included in the calculation.

³ Region totals may not add to U.S. when compiled regions could not be disclosed.

Mozzarella Cheese: Production by State and United States, May 2005-2006

State	May 2005	Apr ¹ 2006	May 2006	Change From	
				May 2005	Apr 2006
	<i>1,000 Pounds</i>	<i>1,000 Pounds</i>	<i>1,000 Pounds</i>	<i>Percent</i>	<i>Percent</i>
CA	81,377	88,918	87,310	7.3	-1.8
ID	11,961	10,648	12,262	2.5	15.2
NY	16,006	15,796	16,949	5.9	7.3
PA	18,276	19,201	17,417	-4.7	-9.3
WI	67,666	66,604	70,200	3.7	5.4
Oth Sts ²	66,952	60,486	61,461	-8.2	1.6
US ³	262,238	261,653	265,599	1.3	1.5
Atlantic	42,050	42,048	39,747	-5.5	-5.5
E N Cen	81,137	79,288	83,114	2.4	4.8
West	128,957	131,437	133,020	3.2	1.2

¹ Revised.

² States not shown when fewer than 3 plants reported or individual plant operations could be disclosed. Percent change shown only when comparable States are included in the calculation.

³ Region totals may not add to U.S. when compiled regions could not be disclosed.

Butter: Production by State and United States, May 2005-2006

State	May 2005	Apr ¹ 2006	May 2006	Change From	
				May 2005	Apr 2006
	<i>1,000 Pounds</i>	<i>1,000 Pounds</i>	<i>1,000 Pounds</i>	<i>Percent</i>	<i>Percent</i>
CA	30,904	39,471	37,670	21.9	-4.6
NY	1,709	1,437	1,713	0.2	19.2
PA	6,872	7,163	6,950	1.1	-3.0
WI	38,041	29,311	34,000	-10.6	16.0
Oth Sts ²	43,189	51,075	49,135	13.8	-3.8
US ³	120,715	128,457	129,468	7.3	0.8
N Atl	11,991	11,642	11,549	-3.7	-0.8
E N Cen	40,362	33,283	36,608	-9.3	10.0
W N Cen	6,541	10,988	10,367	58.5	-5.7
West	47,703	58,491	57,685	20.9	-1.4

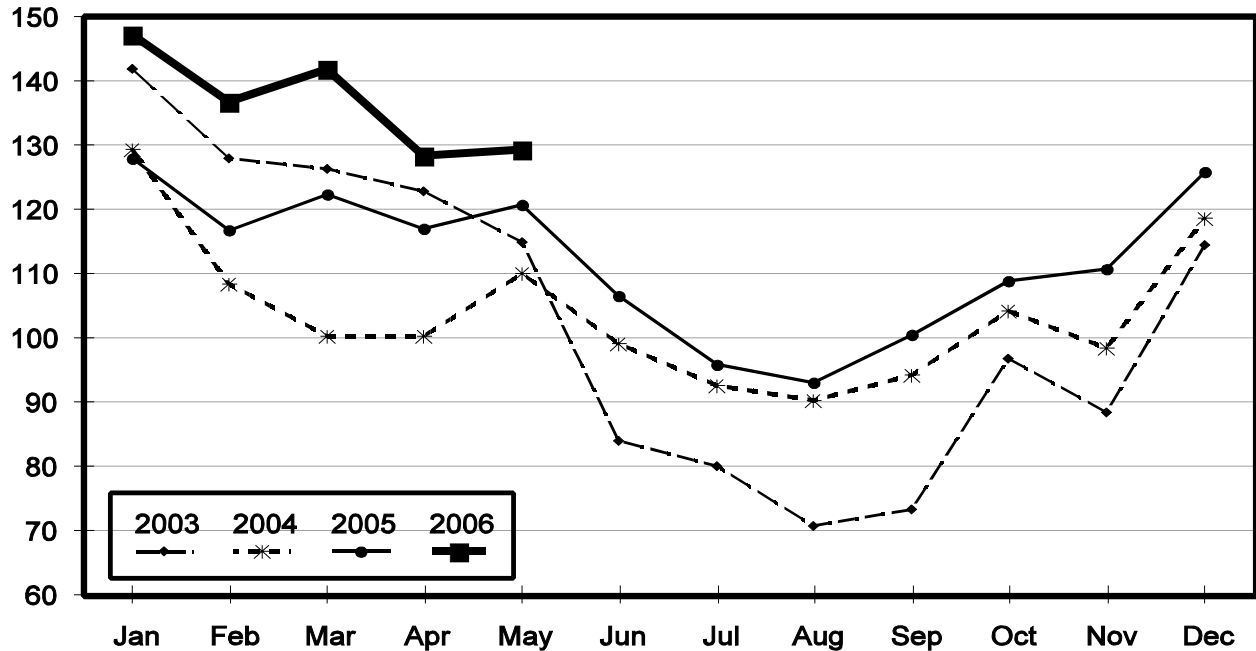
¹ Revised.

² States not shown when fewer than 3 plants reported or individual plant operations could be disclosed. Percent change shown only when comparable States are included in the calculation.

³ Region totals may not add to U.S. when compiled regions could not be disclosed.

Total Butter Production United States

Million Pounds



**Nonfat Dry Milk, Human: Production by State
and United States, May 2005-2006**

State	May 2005	Apr ¹ 2006	May 2006	Change From	
				May 2005	Apr 2006
	<i>1,000 Pounds</i>	<i>1,000 Pounds</i>	<i>1,000 Pounds</i>	<i>Percent</i>	<i>Percent</i>
CA	42,923	58,823	56,619	31.9	-3.7
PA	12,399	12,852	12,645	2.0	-1.6
Oth Sts ²	69,007	57,550	62,535	-9.4	8.7
US	124,329	129,225	131,799	6.0	2.0
Atlantic	25,470	23,997	25,005	-1.8	4.2
E N Cen	6,574	5,862	7,473	13.7	27.5
W N Cen	7,833	4,901	5,605	-28.4	14.4
S Cen	9,598	6,310	6,156	-35.9	-2.4
West	74,854	88,155	87,560	17.0	-0.7

¹ Revised.

² States not shown when fewer than 3 plants reported or individual plant operations could be disclosed. Percent change shown only when comparable States are included in the calculation.

**Dry Whey, Human: Production by State
and United States, May 2005-2006**

State	May 2005	Apr ¹ 2006	May 2006	Change From	
				May 2005	Apr 2006
	<i>1,000 Pounds</i>	<i>1,000 Pounds</i>	<i>1,000 Pounds</i>	<i>Percent</i>	<i>Percent</i>
CA	10,497	8,263	9,962	-5.1	20.6
MN	4,440	4,189	4,413	-0.6	5.3
NY	11,098	11,041	12,257	10.4	11.0
WI	26,389	26,197	26,200	-0.7	
Oth Sts ²	34,228	42,160	41,725	21.9	-1.0
US	86,652	91,850	94,557	9.1	2.9
Atlantic	19,910	20,618	21,045	5.7	2.1
Central	41,006	40,541	40,763	-0.6	0.5
West	25,736	30,691	32,749	27.2	6.7

¹ Revised.

² States not shown when fewer than 3 plants reported or individual plant operations could be disclosed. Percent change shown only when comparable States are included in the calculation.

Ice Cream, Hard: Production by State and United States, May 2005-2006

State	May 2005	Apr ¹ 2006	May 2006	Change From	
				May 2005	Apr 2006
	<i>1,000 Gallons</i>	<i>1,000 Gallons</i>	<i>1,000 Gallons</i>	<i>Percent</i>	<i>Percent</i>
CA	11,821	10,850	11,267	-4.7	3.8
FL	1,763	1,900	2,100	19.1	10.5
IN	7,389	7,278	6,293	-14.8	-13.5
MD	1,952	1,483	1,722	-11.8	16.1
MA	4,490	5,626	5,159	14.9	-8.3
MN	3,871	3,756	4,487	15.9	19.5
MO	2,048	3,096	2,449	19.6	-20.9
NY	2,548	2,560	2,657	4.3	3.8
OH	2,291	1,905	2,359	3.0	23.8
OR	1,251	1,181	1,235	-1.3	4.6
PA	3,587	2,762	3,136	-12.6	13.5
TN	1,507	1,465	1,513	0.4	3.3
TX	4,891	4,628	5,475	11.9	18.3
UT	2,527	1,927	2,649	4.8	37.5
Oth Sts ²	26,439	26,991	29,563	11.8	9.5
US	78,375	77,408	82,064	4.7	6.0
N Atl	13,440	14,921	14,532	8.1	-2.6
S Atl	6,948	6,470	7,051	1.5	9.0
E N Cen	15,046	14,313	14,655	-2.6	2.4
W N Cen	13,221	13,355	15,623	18.2	17.0
S Cen	10,563	10,252	11,499	8.9	12.2
West	19,157	18,097	18,704	-2.4	3.4

¹ Revised.

² States not shown when fewer than 3 plants reported or individual plant operations could be disclosed. Percent change shown only when comparable States are included in the calculation.

**Canned Milk and Dry Milk Products: Manufacturers' Shipments,
and Stocks, May, 2005-2006**

Product	May 2005	Apr 2006 ¹	May 2006	Change From	
				May 2005	Apr 2006
	Manufacturers' Shipments²				
	<i>1,000 Pounds</i>	<i>1,000 Pounds</i>	<i>1,000 Pounds</i>	<i>Percent</i>	<i>Percent</i>
Nonfat Dry Milk, Human	114,726	92,446	130,692	13.9	41.4
	Manufacturers' Stocks End-of-Month³				
	<i>1,000 Pounds</i>	<i>1,000 Pounds</i>	<i>1,000 Pounds</i>	<i>Percent</i>	<i>Percent</i>
Canned Evaporated and Condensed Whole Milk	67,094	74,241	81,808	21.9	10.2
Nonfat Dry Milk, Human	111,871	155,293	143,305	28.1	-7.7
Dry Buttermilk, Total	9,792	15,903	14,377	46.8	-9.6

¹ Revised.

² For dry products, shipments of bulk goods only.

³ Stocks held by manufacturers at all points and in transit.

Procedures and Reliability: Estimates included in this report are based on data provided each month by manufacturers of these products. In 32 States, the State Departments of Agriculture assist in collection of data, which eliminates duplicate reporting and reduces respondent burden. Data are collected by mail, personal and telephone interviews following the close of each month. There were 1,081 manufacturers that made one or more products in 2005. Each month, reports are generally received from all dairy plants in States with small numbers of plants. In States with large numbers of plants, survey procedures are designed to obtain monthly reports from all large plants and from a sample of small plants. Monthly estimates are based upon returns from about 70 percent of the plants which account for 70 to 90 percent of the total production of major dairy products.

Revision Policy: Monthly estimates are subject to revision the month following the preliminary estimates. Annual estimates are published in the "**Dairy Products**" report published each April which includes any revisions made to current and previous year. An attempt is made to get information from all plants for preparing these estimates

Information Contacts

Listed below are the commodity specialists in the Livestock Branch of the National Agricultural Statistics Service to contact for additional information.

- Dan Kerestes, Chief Livestock Branch (202) 720-3570
- William Weaver, Head, Livestock Section (202) 720-3570
 - Bruce Boess - Hogs and Pigs (202) 720-3106
 - Shawn Clark - Dairy Products (202) 690-3236
 - Scott Hollis - Sheep & Lambs, Goats (202) 720-4751
 - Mike Miller - Cattle, Cattle on Feed (202) 720-3040
 - Katy Paulsen - Livestock Slaughter (515) 284-4340
 - Ann Summa - Milk Production and Milk Cows (202) 720-3278
 - Charmaine Wilson - Dairy Products Prices (202) 690-2168

ACCESS TO REPORTS!!

For your convenience, there are several ways to obtain NASS reports, data products, and services:

INTERNET ACCESS

All NASS reports are available free of charge on the worldwide Internet. For access, connect to the Internet and go to the NASS Home Page at: www.nass.usda.gov.

E-MAIL SUBSCRIPTION

All NASS reports are available by subscription free of charge direct to your e-mail address. Starting with the NASS Home Page at www.nass.usda.gov, under the right navigation, *Receive reports by Email*, click on **National** or **State**. Follow the instructions on the screen.

PRINTED REPORTS OR DATA PRODUCTS

CALL OUR TOLL-FREE ORDER DESK: 800-999-6779 (U.S. and Canada)
Other areas, please call 703-605-6220 FAX: 703-605-6900
(Visa, MasterCard, check, or money order acceptable for payment.)

ASSISTANCE

For **assistance** with general agricultural statistics or further information about NASS or its products or services, contact the **Agricultural Statistics Hotline** at **800-727-9540**, 7:30 a.m. to 4:00 p.m. ET, or e-mail: nass@nass.usda.gov.

The U.S. Department of Agriculture (USDA) prohibits discrimination in all its programs and activities on the basis of race, color, national origin, age, disability, and where applicable, sex, marital status, familial status, parental status, religion, sexual orientation, genetic information, political beliefs, reprisal, or because all or part of an individual's income is derived from any public assistance program. (Not all prohibited bases apply to all programs.) Persons with disabilities who require alternative means for communication of program information (Braille, large print, audiotape, etc.) should contact USDA's TARGET Center at (202) 720-2600 (voice and TDD).

To file a complaint of discrimination, write to USDA, Director, Office of Civil Rights, 1400 Independence Avenue, S.W., Washington, D.C. 20250-9410, or call (800) 795-3272 (voice) or (202) 720-6382 (TDD). USDA is an equal opportunity provider and employer.