



# NASS

FACT FINDERS FOR AGRICULTURE  
UNITED STATES DEPARTMENT OF AGRICULTURE

Washington, D.C.

# Dairy Products

---

Released August 4, 2006, by the National Agricultural Statistics Service (NASS), Agricultural Statistics Board, U.S. Department of Agriculture. For information on *Dairy Products* call Shawn Clark at (202) 690-3236, office hours 7:30 a.m. to 4:00 p.m. ET.

## June 2006 Highlights

**Total cheese** output (excluding cottage cheese) was 793 million pounds, 3.8 percent above June 2005 but 2.3 percent below May 2006.

**Italian type cheese** production totaled 325 million pounds, 1.9 percent above June 2005 but 3.1 percent below May 2006.

**American type cheese** production totaled 337 million pounds, 5.0 percent above June 2005 but 2.6 percent below May 2006.

**Butter** production was 101 million pounds, 5.3 percent below June 2005 and 21.2 percent below May 2006.

**Frozen dessert:** (comparisons with June 2005)

Ice cream, Regular (hard) --- 88.2 million gallons, down 3.3 percent.

Ice cream, Lowfat (total) --- 41.6 million gallons, up 7.9 percent.

Ice cream, Nonfat (hard) --- 1.40 million gallons, down 27.0 percent.

Sherbet (hard) --- 5.12 million gallons, down 12.1 percent.

Frozen Yogurt (total) --- 6.91 million gallons, up 7.7 percent.

**Nonfat dry milk for human food:** (compared with June 2005) --- 116 million pounds, down 6.2 percent.

**Dry whey products:** (comparisons with June 2005)

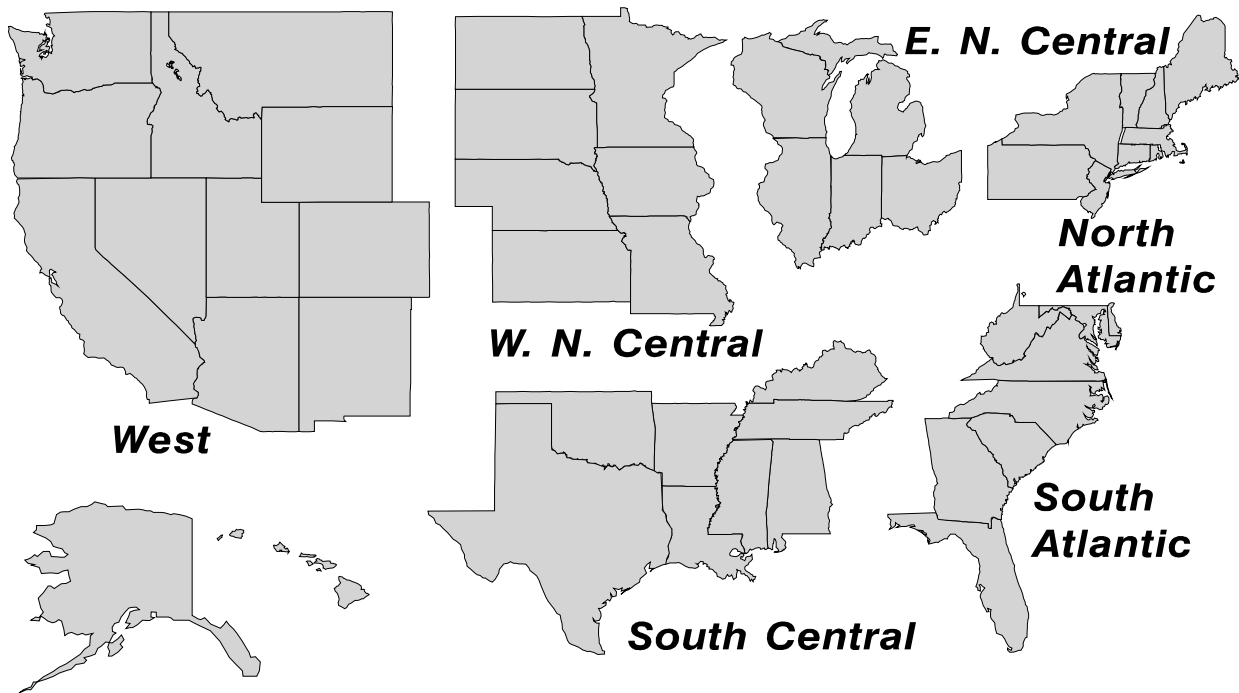
Dry whey, human --- 85.1 million pounds, up 4.5 percent.

Dry whey, animal --- 5.36 million pounds, down 32.9 percent.

Dry whey, total --- 90.4 million pounds, up 1.2 percent.

## U. S. Geographic Regions Dairy Products

State totals are not published when fewer than 3 firms have reported or one firm comprises more than 60 percent of the State total. If we are not able to publish a region for confidentiality reasons, it will be combined with other regions when possible. For example, if North Atlantic can not be published, then it will be combined with South Atlantic to publish Atlantic. The West North Central and East North Central will be combined, if necessary, to form North Central. In the event that neither could be published, they may be combined with South Central to publish Central. Some tables will have only limited regions shown, therefore the regions may not add to the United States total.



## Contents

## Page

|   |    |
|---|----|
| Dairy Products: Production by Product, United States .....                                    | 1  |
| Whey and Modified Whey Products: Production, Stocks, and Prices, United States .....          | 2  |
| Dairy Products: Production by Product and Month, United States .....                          | 3  |
| Select Commodities by State and United States .....   | 10 |
| Canned Milk and Dry Milk Products: Manufacturer's Shipments, Stocks, and Selling Prices ..... | 15 |
| Procedures and Reliability .....  | 16 |
| Information Contacts .....  | 16 |

**Dairy Products: Production by Product,  
United States, June, 2005-2006**

| Product  | Jun<br>2005          | May<br>2006 <sup>1</sup> | Jun<br>2006          | Change From    |                |
|--|----------------------|--------------------------|----------------------|----------------|----------------|
|  |                      |                          |                      | Jun<br>2005    | May<br>2006    |
|  | <i>1,000 Pounds</i>  | <i>1,000 Pounds</i>      | <i>1,000 Pounds</i>  | <i>Percent</i> | <i>Percent</i> |
| Butter   | 106,559              | 128,126                  | 100,900              | -5.3           | -21.2          |
| Cheese   |                      |                          |                      |                |                |
| American Types <sup>2</sup>                              | 321,389              | 346,512                  | 337,472              | 5.0            | -2.6           |
| Cheddar  | 258,211              | 275,298                  | 268,717              | 4.1            | -2.4           |
| Swiss  | 24,520               | 26,506                   | 25,603               | 4.4            | -3.4           |
| Brick and Muenster                                       | 6,588                | 9,246                    | 9,378                | 42.3           | 1.4            |
| Cream and Neufchatel                                     | 53,337               | 55,602                   | 57,373               | 7.6            | 3.2            |
| Hispanic   | 14,098               | 14,086                   | 13,919               | -1.3           | -1.2           |
| Mozzarella   | 255,540              | 267,474                  | 261,760              | 2.4            | -2.1           |
| Other Italian Types                                      | 63,509               | 68,103                   | 63,427               | -0.1           | -6.9           |
| Total Italian Types                                      | 319,049              | 335,577                  | 325,187              | 1.9            | -3.1           |
| All Other Types  | 25,487               | 24,062                   | 24,265               | -4.8           | 0.8            |
| Total  | 764,468              | 811,591                  | 793,197              | 3.8            | -2.3           |
| Cottage Cheese, Curd <sup>3</sup>                        | 39,907               | 39,044                   | 37,846               | -5.2           | -3.1           |
| Cottage Cheese, Cream <sup>4</sup>                       | 32,266               | 31,383                   | 30,973               | -4.0           | -1.3           |
| Cottage Cheese, Lowfat <sup>5</sup>                      | 35,362               | 35,108                   | 33,485               | -5.3           | -4.6           |
| Canned Evaporated and<br>Condensed Whole Milk            | 49,132               | 44,394                   | 43,833               | -10.8          | -1.3           |
| Dry Whole Milk   | 2,068                | 2,561                    | 2,410                | 16.5           | -5.9           |
| Nonfat Dry Milk, Human<br>Skim Milk Powders <sup>6</sup> | 124,206              | 132,262                  | 116,495              | -6.2           | -11.9          |
| Dry Skim Milk, Animal                                    | 571                  | 602                      | 579                  | 1.4            | -3.8           |
| Dry Buttermilk   | 5,250                | 5,772                    | 4,780                | -9.0           | -17.2          |
| Sour Cream   | 85,798               | 91,426                   | 89,605               | 4.4            | -2.0           |
| Yogurt, Plain & Flavored                                 | 263,178              | 267,283                  | 272,495              | 3.5            | 1.9            |
|  | <i>1,000 Gallons</i> | <i>1,000 Gallons</i>     | <i>1,000 Gallons</i> | <i>Percent</i> | <i>Percent</i> |
| Frozen Products  |                      |                          |                      |                |                |
| Ice Cream, Regular, Hard                                 | 91,190               | 82,128                   | 88,167               | -3.3           | 7.4            |
| Ice Cream, Lowfat, Hard                                  | 10,643               | 10,971                   | 13,579               | 27.6           | 23.8           |
| Ice Cream, Lowfat, Soft                                  | 27,929               | 26,255                   | 28,056               | 0.5            | 6.9            |
| Ice Cream, Lowfat, Total                                 | 38,572               | 37,226                   | 41,635               | 7.9            | 11.8           |
| Ice Cream, Nonfat, Hard                                  | 1,923                | 1,486                    | 1,403                | -27.0          | -5.6           |
| Sherbet, Hard  | 5,825                | 4,791                    | 5,123                | -12.1          | 6.9            |
| Water and Juice Ices                                     | 7,337                | 6,295                    | 6,873                | -6.3           | 9.2            |
| Frozen Yogurt, Total                                     | 6,412                | 6,663                    | 6,905                | 7.7            | 3.6            |
| Regular & Lowfat, Hard                                   | 1,755                | 1,383                    | 1,588                | -9.5           | 14.8           |
| Nonfat, Hard   | 1,198                | 955                      | 1,077                | -10.1          | 12.8           |
| Other Frozen Dairy<br>Products                           | 808                  | 1,139                    | 1,034                | 28.0           | -9.2           |
| Mix for Frozen Products                                  |                      |                          |                      |                |                |
| Ice Cream Mix  | 51,322               | 46,608                   | 49,415               | -3.7           | 6.0            |
| Ice Cream, Lowfat, Mix                                   | 23,302               | 21,496                   | 23,947               | 2.8            | 11.4           |
| Ice Cream, Nonfat, Mix                                   | 1,253                | 905                      | 881                  | -29.7          | -2.7           |
| Sherbet Mix  | 4,237                | 3,386                    | 3,664                | -13.5          | 8.2            |
| Yogurt Mix   | 3,881                | 4,038                    | 4,185                | 7.8            | 3.6            |

<sup>1</sup> Revised.

<sup>2</sup> Includes Cheddar, Colby, Monterey, and Jack.

<sup>3</sup> Mostly used for processing into cream or lowfat cottage cheese.

<sup>4</sup> Fat content 4 percent or more.

<sup>5</sup> Fat content less than 4 percent.

<sup>6</sup> Includes protein standardized and blends.

**Whey and Modified Whey Products: Production, Stocks,  
and Prices, United States, June, 2005-2006**

| Product  | Jun<br>2005            | May<br>2006 <sup>1</sup> | Jun<br>2006            | Change From         |                     |
|--|------------------------|--------------------------|------------------------|---------------------|---------------------|
|  |                        |                          |                        | Jun<br>2005         | May<br>2006         |
| <b>Production</b>                                      |                        |                          |                        |                     |                     |
|  | <i>1,000 Pounds</i>    | <i>1,000 Pounds</i>      | <i>1,000 Pounds</i>    | <i>Percent</i>      | <i>Percent</i>      |
| Condensed Whey, Solids Content <sup>2</sup>            |                        |                          |                        |                     |                     |
| Sweet-Type, Human                                      | 6,698                  | 8,095                    | 8,067                  | 20.4                | -0.3                |
| Dry Whey Products                                      |                        |                          |                        |                     |                     |
| Dry Whey, Human  | 81,366                 | 91,837                   | 85,057                 | 4.5                 | -7.4                |
| Dry Whey, Animal                                       | 7,991                  | 5,282                    | 5,362                  | -32.9               | 1.5                 |
| Dry Whey, Total  | 89,357                 | 97,119                   | 90,419                 | 1.2                 | -6.9                |
| Reduced Lactose and Minerals                           |                        |                          |                        |                     |                     |
| Human Food   | 3,972                  | 3,642                    | 3,242                  | -18.4               | -11.0               |
| Animal Feed  | 5,904                  | 4,103                    | 3,980                  | -32.6               | -3.0                |
| Lactose, Human and Animal                              | 56,825                 | 60,475                   | 56,672                 | -0.3                | -6.3                |
| Whey   |                        |                          |                        |                     |                     |
| Protein Concentrate                                    |                        |                          |                        |                     |                     |
| Human <sup>3</sup>                                     | 28,716                 | 30,905                   | 29,601                 | 3.1                 | -4.2                |
| Animal <sup>3</sup>                                    | 3,816                  | 4,789                    | 4,557                  | 19.4                | -4.8                |
| Total <sup>3</sup>                                     | 32,532                 | 35,694                   | 34,158                 | 5.0                 | -4.3                |
| 25.0-49.9 Percent <sup>4</sup>                         | 24,385                 | 25,889                   | 23,782                 | -2.5                | -8.1                |
| 50.0-89.9 Percent <sup>4</sup>                         | 8,147                  | 9,805                    | 10,376                 | 27.4                | 5.8                 |
| Protein Isolates <sup>5</sup>                          | 2,013                  | 2,355                    | 2,713                  | 34.8                | 15.2                |
| <b>Manufacturers' Stocks End-of-Month <sup>6</sup></b> |                        |                          |                        |                     |                     |
|  | <i>1,000 Pounds</i>    | <i>1,000 Pounds</i>      | <i>1,000 Pounds</i>    | <i>Percent</i>      | <i>Percent</i>      |
| Dry Whey Products                                      |                        |                          |                        |                     |                     |
| Dry Whey, Human  | 34,575                 | 41,881                   | 40,635                 | 17.5                | -3.0                |
| Dry Whey, Animal                                       | 3,451                  | 2,617                    | 2,863                  | -17.0               | 9.4                 |
| Dry Whey, Total  | 38,026                 | 44,498                   | 43,498                 | 14.4                | -2.2                |
| Reduced Lactose and Minerals                           |                        |                          |                        |                     |                     |
| Human and Animal <sup>7</sup>                          | 3,979                  | 5,415                    | 4,618                  | 16.1                | -14.7               |
| Lactose, Human and Animal                              | 60,932                 | 41,074                   | 41,479                 | -31.9               | 1.0                 |
| Whey   |                        |                          |                        |                     |                     |
| Protein Concentrate                                    |                        |                          |                        |                     |                     |
| Human <sup>3</sup>                                     | 23,454                 | 28,755                   | 28,250                 | 20.4                | -1.8                |
| Animal <sup>3</sup>                                    | 2,078                  | 2,226                    | 2,411                  | 16.0                | 8.3                 |
| Total <sup>3</sup>                                     | 25,532                 | 30,981                   | 30,661                 | 20.1                | -1.0                |
| 25.0-49.9 Percent <sup>4</sup>                         | 15,785                 | 19,413                   | 18,918                 | 19.8                | -2.5                |
| 50.0-89.9 Percent <sup>4</sup>                         | 9,747                  | 11,568                   | 11,743                 | 20.5                | 1.5                 |
| <b>Manufacturers' Selling Price <sup>8</sup></b>       |                        |                          |                        |                     |                     |
|  | <i>Cents per Pound</i> | <i>Cents per Pound</i>   | <i>Cents per Pound</i> | <i>Cents Change</i> | <i>Cents Change</i> |
| Dry Whey, Animal                                       | 25.5                   | 22.3                     | 23.0                   | -2.5                | 0.7                 |

<sup>1</sup> Revised.

<sup>2</sup> Final marketable product only. Does not include quantity used or shipped to another plant for further processing into dry whey or modified whey products. Does not include sweet-type, animal whey.

<sup>3</sup> Whey Protein Concentrate, 25.0 to 89.9 percent.

<sup>4</sup> Whey Protein Concentrate, Human and Animal.

<sup>5</sup> Whey Protein Isolate, 90.0 percent or greater.

<sup>6</sup> Stocks held by manufacturers at all points and in transit.

<sup>7</sup> Reduced lactose and minerals stocks combined to avoid disclosure of individual operations.

<sup>8</sup> Prices for bulk goods, f.o.b. plant. Average monthly prices reported by firms.

**Dairy Products: Production by Product and Month,  
United States, 2005-2006 <sup>1</sup>**

| Product and Month      | By Month            |                     |                  | Cumulative          |                     |                  |
|------------------------|---------------------|---------------------|------------------|---------------------|---------------------|------------------|
|                        | 2005                | 2006                | Change From 2005 | 2005                | 2006                | Change From 2005 |
|                        | <i>1,000 Pounds</i> | <i>1,000 Pounds</i> | <i>Percent</i>   | <i>1,000 Pounds</i> | <i>1,000 Pounds</i> | <i>Percent</i>   |
| <b>Total Cheese</b>    |                     |                     |                  |                     |                     |                  |
| Jan                    | 753,967             | 772,337             | 2.4              | 753,967             | 772,337             | 2.4              |
| Feb                    | 704,633             | 720,978             | 2.3              | 1,458,600           | 1,493,315           | 2.4              |
| Mar                    | 797,511             | 812,634             | 1.9              | 2,256,111           | 2,305,949           | 2.2              |
| Apr                    | 754,849             | 786,477             | 4.2              | 3,010,960           | 3,092,426           | 2.7              |
| May                    | 783,943             | 811,591             | 3.5              | 3,794,903           | 3,904,017           | 2.9              |
| Jun                    | 764,468             | 793,197             | 3.8              | 4,559,371           | 4,697,214           | 3.0              |
| Jul                    | 739,472             |                     |                  | 5,298,843           |                     |                  |
| Aug                    | 757,402             |                     |                  | 6,056,245           |                     |                  |
| Sep                    | 745,485             |                     |                  | 6,801,730           |                     |                  |
| Oct                    | 760,407             |                     |                  | 7,562,137           |                     |                  |
| Nov                    | 766,061             |                     |                  | 8,328,198           |                     |                  |
| Dec                    | 798,909             |                     |                  | 9,127,107           |                     |                  |
| <b>American Cheese</b> |                     |                     |                  |                     |                     |                  |
| Jan                    | 322,332             | 324,545             | 0.7              | 322,332             | 324,545             | 0.7              |
| Feb                    | 292,238             | 304,376             | 4.2              | 614,570             | 628,921             | 2.3              |
| Mar                    | 331,468             | 338,383             | 2.1              | 946,038             | 967,304             | 2.2              |
| Apr                    | 327,575             | 338,715             | 3.4              | 1,273,613           | 1,306,019           | 2.5              |
| May                    | 332,501             | 346,512             | 4.2              | 1,606,114           | 1,652,531           | 2.9              |
| Jun                    | 321,389             | 337,472             | 5.0              | 1,927,503           | 1,990,003           | 3.2              |
| Jul                    | 315,977             |                     |                  | 2,243,480           |                     |                  |
| Aug                    | 312,028             |                     |                  | 2,555,508           |                     |                  |
| Sep                    | 301,791             |                     |                  | 2,857,299           |                     |                  |
| Oct                    | 312,321             |                     |                  | 3,169,620           |                     |                  |
| Nov                    | 313,195             |                     |                  | 3,482,815           |                     |                  |
| Dec                    | 330,135             |                     |                  | 3,812,950           |                     |                  |
| <b>Cheddar Cheese</b>  |                     |                     |                  |                     |                     |                  |
| Jan                    | 261,868             | 265,809             | 1.5              | 261,868             | 265,809             | 1.5              |
| Feb                    | 237,987             | 246,344             | 3.5              | 499,855             | 512,153             | 2.5              |
| Mar                    | 268,668             | 270,553             | 0.7              | 768,523             | 782,706             | 1.8              |
| Apr                    | 262,787             | 273,664             | 4.1              | 1,031,310           | 1,056,370           | 2.4              |
| May                    | 265,569             | 275,298             | 3.7              | 1,296,879           | 1,331,668           | 2.7              |
| Jun                    | 258,211             | 268,717             | 4.1              | 1,555,090           | 1,600,385           | 2.9              |
| Jul                    | 252,709             |                     |                  | 1,807,799           |                     |                  |
| Aug                    | 245,144             |                     |                  | 2,052,943           |                     |                  |
| Sep                    | 239,629             |                     |                  | 2,292,572           |                     |                  |
| Oct                    | 248,910             |                     |                  | 2,541,482           |                     |                  |
| Nov                    | 248,464             |                     |                  | 2,789,946           |                     |                  |
| Dec                    | 262,469             |                     |                  | 3,052,415           |                     |                  |

See footnote(s) at end of table.

--continued

**Dairy Products: Production by Product and Month,  
United States, 2005-2006 <sup>1</sup> (continued)**

| Product and Month | By Month            |                     |                  | Cumulative          |                     |                  |
|-------------------|---------------------|---------------------|------------------|---------------------|---------------------|------------------|
|                   | 2005                | 2006                | Change From 2005 | 2005                | 2006                | Change From 2005 |
|                   | <i>1,000 Pounds</i> | <i>1,000 Pounds</i> | <i>Percent</i>   | <i>1,000 Pounds</i> | <i>1,000 Pounds</i> | <i>Percent</i>   |
| Italian Cheese    |                     |                     |                  |                     |                     |                  |
| Jan               | 316,288             | 328,315             | 3.8              | 316,288             | 328,315             | 3.8              |
| Feb               | 299,673             | 307,623             | 2.7              | 615,961             | 635,938             | 3.2              |
| Mar               | 338,682             | 346,179             | 2.2              | 954,643             | 982,117             | 2.9              |
| Apr               | 310,719             | 328,588             | 5.8              | 1,265,362           | 1,310,705           | 3.6              |
| May               | 327,196             | 335,577             | 2.6              | 1,592,558           | 1,646,282           | 3.4              |
| Jun               | 319,049             | 325,187             | 1.9              | 1,911,607           | 1,971,469           | 3.1              |
| Jul               | 303,054             |                     |                  | 2,214,661           |                     |                  |
| Aug               | 311,518             |                     |                  | 2,526,179           |                     |                  |
| Sep               | 310,339             |                     |                  | 2,836,518           |                     |                  |
| Oct               | 311,901             |                     |                  | 3,148,419           |                     |                  |
| Nov               | 320,304             |                     |                  | 3,468,723           |                     |                  |
| Dec               | 336,007             |                     |                  | 3,804,730           |                     |                  |
| Mozzarella        |                     |                     |                  |                     |                     |                  |
| Jan               | 250,595             | 259,574             | 3.6              | 250,595             | 259,574             | 3.6              |
| Feb               | 239,382             | 242,804             | 1.4              | 489,977             | 502,378             | 2.5              |
| Mar               | 269,830             | 273,870             | 1.5              | 759,807             | 776,248             | 2.2              |
| Apr               | 247,184             | 261,653             | 5.9              | 1,006,991           | 1,037,901           | 3.1              |
| May               | 262,238             | 267,474             | 2.0              | 1,269,229           | 1,305,375           | 2.8              |
| Jun               | 255,540             | 261,760             | 2.4              | 1,524,769           | 1,567,135           | 2.8              |
| Jul               | 243,304             |                     |                  | 1,768,073           |                     |                  |
| Aug               | 244,631             |                     |                  | 2,012,704           |                     |                  |
| Sep               | 243,687             |                     |                  | 2,256,391           |                     |                  |
| Oct               | 243,671             |                     |                  | 2,500,062           |                     |                  |
| Nov               | 252,933             |                     |                  | 2,752,995           |                     |                  |
| Dec               | 267,803             |                     |                  | 3,020,798           |                     |                  |
| Other Italian     |                     |                     |                  |                     |                     |                  |
| Jan               | 65,693              | 68,741              | 4.6              | 65,693              | 68,741              | 4.6              |
| Feb               | 60,291              | 64,819              | 7.5              | 125,984             | 133,560             | 6.0              |
| Mar               | 68,852              | 72,309              | 5.0              | 194,836             | 205,869             | 5.7              |
| Apr               | 63,535              | 66,935              | 5.4              | 258,371             | 272,804             | 5.6              |
| May               | 64,958              | 68,103              | 4.8              | 323,329             | 340,907             | 5.4              |
| Jun               | 63,509              | 63,427              | -0.1             | 386,838             | 404,334             | 4.5              |
| Jul               | 59,750              |                     |                  | 446,588             |                     |                  |
| Aug               | 66,887              |                     |                  | 513,475             |                     |                  |
| Sep               | 66,652              |                     |                  | 580,127             |                     |                  |
| Oct               | 68,230              |                     |                  | 648,357             |                     |                  |
| Nov               | 67,371              |                     |                  | 715,728             |                     |                  |
| Dec               | 68,204              |                     |                  | 783,932             |                     |                  |

See footnote(s) at end of table.

--continued

**Dairy Products: Production by Product and Month,  
United States, 2005-2006 <sup>1</sup> (continued)**

| Product and Month           | By Month            |                     |                  | Cumulative          |                     |                  |
|-----------------------------|---------------------|---------------------|------------------|---------------------|---------------------|------------------|
|                             | 2005                | 2006                | Change From 2005 | 2005                | 2006                | Change From 2005 |
|                             | <i>1,000 Pounds</i> | <i>1,000 Pounds</i> | <i>Percent</i>   | <i>1,000 Pounds</i> | <i>1,000 Pounds</i> | <i>Percent</i>   |
| Butter                      |                     |                     |                  |                     |                     |                  |
| Jan                         | 128,020             | 147,251             | 15.0             | 128,020             | 147,251             | 15.0             |
| Feb                         | 116,927             | 136,953             | 17.1             | 244,947             | 284,204             | 16.0             |
| Mar                         | 122,402             | 141,993             | 16.0             | 367,349             | 426,197             | 16.0             |
| Apr                         | 117,061             | 128,457             | 9.7              | 484,410             | 554,654             | 14.5             |
| May                         | 120,715             | 128,126             | 6.1              | 605,125             | 682,780             | 12.8             |
| Jun                         | 106,559             | 100,900             | -5.3             | 711,684             | 783,680             | 10.1             |
| Jul                         | 95,929              |                     |                  | 807,613             |                     |                  |
| Aug                         | 93,194              |                     |                  | 900,807             |                     |                  |
| Sep                         | 100,647             |                     |                  | 1,001,454           |                     |                  |
| Oct                         | 108,915             |                     |                  | 1,110,369           |                     |                  |
| Nov                         | 110,905             |                     |                  | 1,221,274           |                     |                  |
| Dec                         | 125,953             |                     |                  | 1,347,227           |                     |                  |
| Nonfat Dry Milk, Human      |                     |                     |                  |                     |                     |                  |
| Jan                         | 93,261              | 107,254             | 15.0             | 93,261              | 107,254             | 15.0             |
| Feb                         | 97,275              | 117,466             | 20.8             | 190,536             | 224,720             | 17.9             |
| Mar                         | 109,299             | 128,269             | 17.4             | 299,835             | 352,989             | 17.7             |
| Apr                         | 104,876             | 129,225             | 23.2             | 404,711             | 482,214             | 19.2             |
| May                         | 124,329             | 132,262             | 6.4              | 529,040             | 614,476             | 16.1             |
| Jun                         | 124,206             | 116,495             | -6.2             | 653,246             | 730,971             | 11.9             |
| Jul                         | 108,865             |                     |                  | 762,111             |                     |                  |
| Aug                         | 86,679              |                     |                  | 848,790             |                     |                  |
| Sep                         | 70,954              |                     |                  | 919,744             |                     |                  |
| Oct                         | 73,554              |                     |                  | 993,298             |                     |                  |
| Nov                         | 89,095              |                     |                  | 1,082,393           |                     |                  |
| Dec                         | 103,711             |                     |                  | 1,186,104           |                     |                  |
| Total Dry Whey <sup>2</sup> |                     |                     |                  |                     |                     |                  |
| Jan                         | 85,936              | 88,243              | 2.7              | 85,936              | 88,243              | 2.7              |
| Feb                         | 79,665              | 89,713              | 12.6             | 165,601             | 177,956             | 7.5              |
| Mar                         | 91,775              | 101,239             | 10.3             | 257,376             | 279,195             | 8.5              |
| Apr                         | 91,260              | 96,339              | 5.6              | 348,636             | 375,534             | 7.7              |
| May                         | 94,083              | 97,119              | 3.2              | 442,719             | 472,653             | 6.8              |
| Jun                         | 89,357              | 90,419              | 1.2              | 532,076             | 563,072             | 5.8              |
| Jul                         | 89,143              |                     |                  | 621,219             |                     |                  |
| Aug                         | 87,438              |                     |                  | 708,657             |                     |                  |
| Sep                         | 83,948              |                     |                  | 792,605             |                     |                  |
| Oct                         | 82,186              |                     |                  | 874,791             |                     |                  |
| Nov                         | 84,844              |                     |                  | 959,635             |                     |                  |
| Dec                         | 86,187              |                     |                  | 1,045,822           |                     |                  |

See footnote(s) at end of table.

--continued



**Dairy Products: Production by Product and Month,  
United States, 2005-2006 <sup>1</sup> (continued)**

| Product and Month               | By Month             |                      |                  | Cumulative           |                      |                  |
|---------------------------------|----------------------|----------------------|------------------|----------------------|----------------------|------------------|
|                                 | 2005                 | 2006                 | Change From 2005 | 2005                 | 2006                 | Change From 2005 |
|                                 | <i>1,000 Pounds</i>  | <i>1,000 Pounds</i>  | <i>Percent</i>   | <i>1,000 Pounds</i>  | <i>1,000 Pounds</i>  | <i>Percent</i>   |
| <b>Cream Cottage Cheese</b>     |                      |                      |                  |                      |                      |                  |
| Jan                             | 29,553               | 27,785               | -6.0             | 29,553               | 27,785               | -6.0             |
| Feb                             | 27,833               | 27,193               | -2.3             | 57,386               | 54,978               | -4.2             |
| Mar                             | 32,682               | 32,115               | -1.7             | 90,068               | 87,093               | -3.3             |
| Apr                             | 30,623               | 28,580               | -6.7             | 120,691              | 115,673              | -4.2             |
| May                             | 31,463               | 31,383               | -0.3             | 152,154              | 147,056              | -3.4             |
| Jun                             | 32,266               | 30,973               | -4.0             | 184,420              | 178,029              | -3.5             |
| Jul                             | 31,938               |                      |                  | 216,358              |                      |                  |
| Aug                             | 33,782               |                      |                  | 250,140              |                      |                  |
| Sep                             | 33,011               |                      |                  | 283,151              |                      |                  |
| Oct                             | 30,269               |                      |                  | 313,420              |                      |                  |
| Nov                             | 28,679               |                      |                  | 342,099              |                      |                  |
| Dec                             | 26,058               |                      |                  | 368,157              |                      |                  |
| <b>Lowfat Cottage Cheese</b>    |                      |                      |                  |                      |                      |                  |
| Jan                             | 30,843               | 31,617               | 2.5              | 30,843               | 31,617               | 2.5              |
| Feb                             | 32,060               | 30,818               | -3.9             | 62,903               | 62,435               | -0.7             |
| Mar                             | 35,064               | 35,940               | 2.5              | 97,967               | 98,375               | 0.4              |
| Apr                             | 32,706               | 31,668               | -3.2             | 130,673              | 130,043              | -0.5             |
| May                             | 34,904               | 35,108               | 0.6              | 165,577              | 165,151              | -0.3             |
| Jun                             | 35,362               | 33,485               | -5.3             | 200,939              | 198,636              | -1.1             |
| Jul                             | 32,436               |                      |                  | 233,375              |                      |                  |
| Aug                             | 35,568               |                      |                  | 268,943              |                      |                  |
| Sep                             | 34,506               |                      |                  | 303,449              |                      |                  |
| Oct                             | 32,642               |                      |                  | 336,091              |                      |                  |
| Nov                             | 31,406               |                      |                  | 367,497              |                      |                  |
| Dec                             | 28,574               |                      |                  | 396,071              |                      |                  |
|                                 | <i>1,000 Gallons</i> | <i>1,000 Gallons</i> | <i>Percent</i>   | <i>1,000 Gallons</i> | <i>1,000 Gallons</i> | <i>Percent</i>   |
| <b>Ice Cream, Regular, Hard</b> |                      |                      |                  |                      |                      |                  |
| Jan                             | 62,103               | 61,826               | -0.4             | 62,103               | 61,826               | -0.4             |
| Feb                             | 65,827               | 62,916               | -4.4             | 127,930              | 124,742              | -2.5             |
| Mar                             | 78,753               | 77,869               | -1.1             | 206,683              | 202,611              | -2.0             |
| Apr                             | 78,091               | 77,408               | -0.9             | 284,774              | 280,019              | -1.7             |
| May                             | 78,375               | 82,128               | 4.8              | 363,149              | 362,147              | -0.3             |
| Jun                             | 91,190               | 88,167               | -3.3             | 454,339              | 450,314              | -0.9             |
| Jul                             | 87,054               |                      |                  | 541,393              |                      |                  |
| Aug                             | 89,142               |                      |                  | 630,535              |                      |                  |
| Sep                             | 72,359               |                      |                  | 702,894              |                      |                  |
| Oct                             | 69,862               |                      |                  | 772,756              |                      |                  |
| Nov                             | 61,133               |                      |                  | 833,889              |                      |                  |
| Dec                             | 54,854               |                      |                  | 888,743              |                      |                  |

See footnote(s) at end of table.

--continued

**Dairy Products: Production by Product and Month,  
United States, 2005-2006 <sup>1</sup> (continued)**

| Product and Month          | By Month             |                      |                  | Cumulative           |                      |                  |
|----------------------------|----------------------|----------------------|------------------|----------------------|----------------------|------------------|
|                            | 2005                 | 2006                 | Change From 2005 | 2005                 | 2006                 | Change From 2005 |
|                            | <i>1,000 Gallons</i> | <i>1,000 Gallons</i> | <i>Percent</i>   | <i>1,000 Gallons</i> | <i>1,000 Gallons</i> | <i>Percent</i>   |
| <b>Ice Cream, Lowfat</b>   |                      |                      |                  |                      |                      |                  |
| Jan                        | 24,199               | 25,444               | 5.1              | 24,199               | 25,444               | 5.1              |
| Feb                        | 26,181               | 24,134               | -7.8             | 50,380               | 49,578               | -1.6             |
| Mar                        | 32,927               | 31,475               | -4.4             | 83,307               | 81,053               | -2.7             |
| Apr                        | 33,192               | 32,054               | -3.4             | 116,499              | 113,107              | -2.9             |
| May                        | 33,123               | 37,226               | 12.4             | 149,622              | 150,333              | 0.5              |
| Jun                        | 38,572               | 41,635               | 7.9              | 188,194              | 191,968              | 2.0              |
| Jul                        | 36,928               |                      |                  | 225,122              |                      |                  |
| Aug                        | 35,592               |                      |                  | 260,714              |                      |                  |
| Sep                        | 30,745               |                      |                  | 291,459              |                      |                  |
| Oct                        | 27,013               |                      |                  | 318,472              |                      |                  |
| Nov                        | 23,770               |                      |                  | 342,242              |                      |                  |
| Dec                        | 21,726               |                      |                  | 363,968              |                      |                  |
| <b>Ice Cream, NF, Hard</b> |                      |                      |                  |                      |                      |                  |
| Jan                        | 1,205                | 1,330                | 10.4             | 1,205                | 1,330                | 10.4             |
| Feb                        | 1,715                | 1,254                | -26.9            | 2,920                | 2,584                | -11.5            |
| Mar                        | 1,686                | 1,607                | -4.7             | 4,606                | 4,191                | -9.0             |
| Apr                        | 1,682                | 1,324                | -21.3            | 6,288                | 5,515                | -12.3            |
| May                        | 1,730                | 1,486                | -14.1            | 8,018                | 7,001                | -12.7            |
| Jun                        | 1,923                | 1,403                | -27.0            | 9,941                | 8,404                | -15.5            |
| Jul                        | 2,188                |                      |                  | 12,129               |                      |                  |
| Aug                        | 1,910                |                      |                  | 14,039               |                      |                  |
| Sep                        | 1,611                |                      |                  | 15,650               |                      |                  |
| Oct                        | 1,538                |                      |                  | 17,188               |                      |                  |
| Nov                        | 1,319                |                      |                  | 18,507               |                      |                  |
| Dec                        | 1,153                |                      |                  | 19,660               |                      |                  |
| <b>Sherbet, Hard</b>       |                      |                      |                  |                      |                      |                  |
| Jan                        | 3,838                | 3,893                | 1.4              | 3,838                | 3,893                | 1.4              |
| Feb                        | 4,036                | 4,173                | 3.4              | 7,874                | 8,066                | 2.4              |
| Mar                        | 4,924                | 4,582                | -6.9             | 12,798               | 12,648               | -1.2             |
| Apr                        | 5,111                | 4,557                | -10.8            | 17,909               | 17,205               | -3.9             |
| May                        | 4,934                | 4,791                | -2.9             | 22,843               | 21,996               | -3.7             |
| Jun                        | 5,825                | 5,123                | -12.1            | 28,668               | 27,119               | -5.4             |
| Jul                        | 5,425                |                      |                  | 34,093               |                      |                  |
| Aug                        | 5,632                |                      |                  | 39,725               |                      |                  |
| Sep                        | 4,953                |                      |                  | 44,678               |                      |                  |
| Oct                        | 3,724                |                      |                  | 48,402               |                      |                  |
| Nov                        | 3,442                |                      |                  | 51,844               |                      |                  |
| Dec                        | 3,436                |                      |                  | 55,280               |                      |                  |

See footnote(s) at end of table.

--continued

**Dairy Products: Production by Product and Month,  
United States, 2005-2006 <sup>1</sup> (continued)**

| Product and Month | By Month            |                     |                  | Cumulative          |                     |                  |
|-------------------|---------------------|---------------------|------------------|---------------------|---------------------|------------------|
|                   | 2005                | 2006                | Change From 2005 | 2005                | 2006                | Change From 2005 |
|                   | <i>1,000 Pounds</i> | <i>1,000 Pounds</i> | <i>Percent</i>   | <i>1,000 Pounds</i> | <i>1,000 Pounds</i> | <i>Percent</i>   |
| Sour Cream        |                     |                     |                  |                     |                     |                  |
| Jan               | 76,976              | 81,288              | 5.6              | 76,976              | 81,288              | 5.6              |
| Feb               | 73,791              | 76,832              | 4.1              | 150,767             | 158,120             | 4.9              |
| Mar               | 87,637              | 89,000              | 1.6              | 238,404             | 247,120             | 3.7              |
| Apr               | 72,323              | 79,298              | 9.6              | 310,727             | 326,418             | 5.0              |
| May               | 86,250              | 91,426              | 6.0              | 396,977             | 417,844             | 5.3              |
| Jun               | 85,798              | 89,605              | 4.4              | 482,775             | 507,449             | 5.1              |
| Jul               | 79,324              |                     |                  | 562,099             |                     |                  |
| Aug               | 90,935              |                     |                  | 653,034             |                     |                  |
| Sep               | 79,208              |                     |                  | 732,242             |                     |                  |
| Oct               | 90,019              |                     |                  | 822,261             |                     |                  |
| Nov               | 108,466             |                     |                  | 930,727             |                     |                  |
| Dec               | 99,090              |                     |                  | 1,029,817           |                     |                  |

See footnote(s) at end of table.

--continued

**Dairy Products: Production by Product and Month,  
United States, 2005-2006 <sup>1</sup> (continued)**

| Product and Month | By Month            |                     |                  | Cumulative          |                     |                  |
|-------------------|---------------------|---------------------|------------------|---------------------|---------------------|------------------|
|                   | 2005                | 2006                | Change From 2005 | 2005                | 2006                | Change From 2005 |
|                   | <i>1,000 Pounds</i> | <i>1,000 Pounds</i> | <i>Percent</i>   | <i>1,000 Pounds</i> | <i>1,000 Pounds</i> | <i>Percent</i>   |
| Yogurt            |                     |                     |                  |                     |                     |                  |
| Jan               | 224,187             | 252,353             | 12.6             | 224,187             | 252,353             | 12.6             |
| Feb               | 236,193             | 238,108             | 0.8              | 460,380             | 490,461             | 6.5              |
| Mar               | 275,949             | 280,577             | 1.7              | 736,329             | 771,038             | 4.7              |
| Apr               | 247,409             | 254,096             | 2.7              | 983,738             | 1,025,134           | 4.2              |
| May               | 264,459             | 267,283             | 1.1              | 1,248,197           | 1,292,417           | 3.5              |
| Jun               | 263,178             | 272,495             | 3.5              | 1,511,375           | 1,564,912           | 3.5              |
| Jul               | 244,608             |                     |                  | 1,755,983           |                     |                  |
| Aug               | 265,359             |                     |                  | 2,021,342           |                     |                  |
| Sep               | 273,643             |                     |                  | 2,294,985           |                     |                  |
| Oct               | 249,329             |                     |                  | 2,544,314           |                     |                  |
| Nov               | 219,567             |                     |                  | 2,763,881           |                     |                  |
| Dec               | 225,908             |                     |                  | 2,989,789           |                     |                  |

See footnote(s) at end of table.

--continued

**Dairy Products: Production by Product and Month,  
United States, 2005-2006 <sup>1</sup> (continued)**

| Product and Month | By Month             |                      |                  | Cumulative           |                      |                  |
|-------------------|----------------------|----------------------|------------------|----------------------|----------------------|------------------|
|                   | 2005                 | 2006                 | Change From 2005 | 2005                 | 2006                 | Change From 2005 |
|                   | <i>1,000 Gallons</i> | <i>1,000 Gallons</i> | <i>Percent</i>   | <i>1,000 Gallons</i> | <i>1,000 Gallons</i> | <i>Percent</i>   |
| Frozen Yogurt     |                      |                      |                  |                      |                      |                  |
| Jan               | 4,353                | 4,131                | -5.1             | 4,353                | 4,131                | -5.1             |
| Feb               | 4,910                | 4,524                | -7.9             | 9,263                | 8,655                | -6.6             |
| Mar               | 5,942                | 6,044                | 1.7              | 15,205               | 14,699               | -3.3             |
| Apr               | 5,737                | 5,960                | 3.9              | 20,942               | 20,659               | -1.4             |
| May               | 6,239                | 6,663                | 6.8              | 27,181               | 27,322               | 0.5              |
| Jun               | 6,412                | 6,905                | 7.7              | 33,593               | 34,227               | 1.9              |
| Jul               | 5,867                |                      |                  | 39,460               |                      |                  |
| Aug               | 6,142                |                      |                  | 45,602               |                      |                  |
| Sep               | 5,456                |                      |                  | 51,058               |                      |                  |
| Oct               | 5,114                |                      |                  | 56,172               |                      |                  |
| Nov               | 4,419                |                      |                  | 60,591               |                      |                  |
| Dec               | 4,460                |                      |                  | 65,051               |                      |                  |

<sup>1</sup> May 2006 data revised.

<sup>2</sup> Excludes all modified dry whey products.

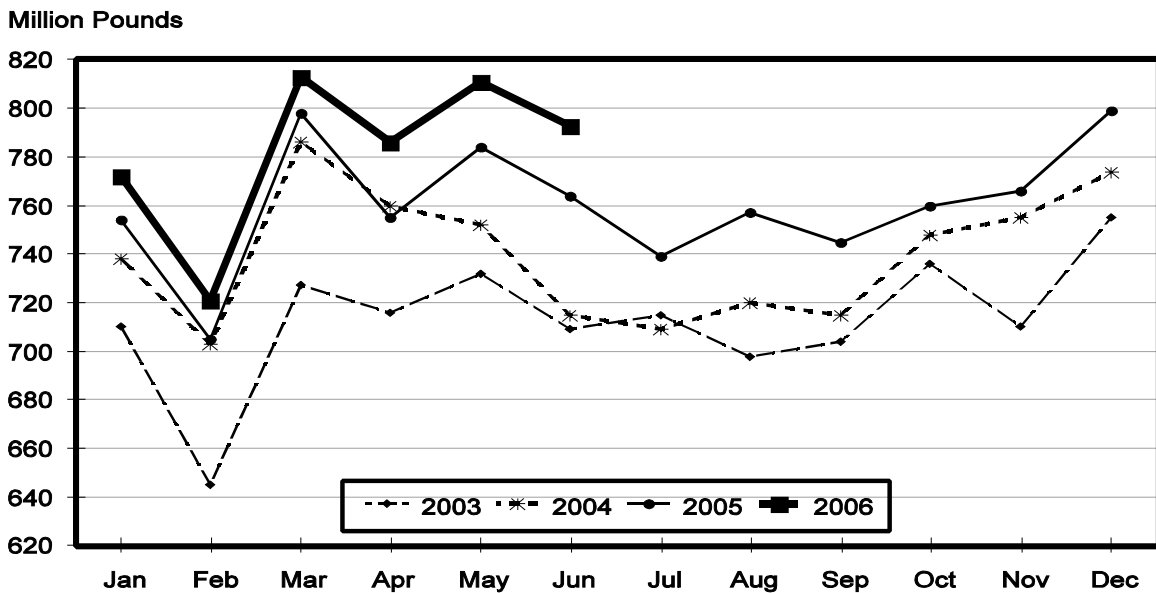
**Total Cheese, Excluding Cottage Cheese: Production by State and United States, June 2005-2006**

| State                | Jun 2005            | May <sup>1</sup> 2006 | Jun 2006            | Change From    |                |
|----------------------|---------------------|-----------------------|---------------------|----------------|----------------|
|                      |                     |                       |                     | Jun 2005       | May 2006       |
|                      | <i>1,000 Pounds</i> | <i>1,000 Pounds</i>   | <i>1,000 Pounds</i> | <i>Percent</i> | <i>Percent</i> |
| CA                   | 181,252             | 186,544               | 181,587             | 0.2            | -2.7           |
| ID                   | 61,183              | 69,575                | 66,366              | 8.5            | -4.6           |
| IL                   | 7,978               | 6,277                 | 6,164               | -22.7          | -1.8           |
| IA                   | 13,281              | 14,146                | 13,501              | 1.7            | -4.6           |
| MN                   | 53,440              | 55,367                | 52,954              | -0.9           | -4.4           |
| NY                   | 55,503              | 56,923                | 53,884              | -2.9           | -5.3           |
| OH                   | 17,088              | 18,308                | 17,045              | -0.3           | -6.9           |
| PA                   | 34,915              | 34,080                | 31,697              | -9.2           | -7.0           |
| SD                   | 14,659              | 15,832                | 15,367              | 4.8            | -2.9           |
| UT                   | 5,954               | 6,411                 | 6,252               | 5.0            | -2.5           |
| WI                   | 202,049             | 208,401               | 205,587             | 1.8            | -1.4           |
| Oth Sts <sup>2</sup> | 117,166             | 139,727               | 142,793             | 21.9           | 2.2            |
| US                   | 764,468             | 811,591               | 793,197             | 3.8            | -2.3           |
| N Atl                | 104,432             | 105,636               | 100,870             | -3.4           | -4.5           |
| S Atl                | 2,836               | 2,980                 | 2,852               | 0.6            | -4.3           |
| E N Cen              | 241,111             | 247,071               | 243,405             | 1.0            | -1.5           |
| W N Cen              | 87,616              | 90,675                | 87,554              | -0.1           | -3.4           |
| S Cen                | 9,221               | 9,795                 | 9,049               | -1.9           | -7.6           |
| West                 | 319,252             | 355,434               | 349,467             | 9.5            | -1.7           |

<sup>1</sup> Revised.

<sup>2</sup> States not shown when fewer than 3 plants reported or individual plant operations could be disclosed. Percent change shown only when comparable States are included in the calculation.

## Total Cheese Production United States



**American Cheese: Production by State and United States, June 2005-2006**

| State                | Jun<br>2005         | May <sup>1</sup><br>2006 | Jun<br>2006         | Change From    |                |
|----------------------|---------------------|--------------------------|---------------------|----------------|----------------|
|                      |                     |                          |                     | Jun<br>2005    | May<br>2006    |
|                      | <i>1,000 Pounds</i> | <i>1,000 Pounds</i>      | <i>1,000 Pounds</i> | <i>Percent</i> | <i>Percent</i> |
| CA                   | 73,303              | 70,964                   | 67,877              | -7.4           | -4.4           |
| ID                   | 46,383              | 49,846                   | 48,585              | 4.7            | -2.5           |
| IA                   | 10,431              | 11,116                   | 10,727              | 2.8            | -3.5           |
| MN                   | 49,731              | 51,358                   | 49,292              | -0.9           | -4.0           |
| OH                   | 3,994               | 3,869                    | 3,584               | -10.3          | -7.4           |
| OR                   | 9,538               | 9,348                    | 9,284               | -2.7           | -0.7           |
| WI                   | 73,491              | 73,700                   | 69,600              | -5.3           | -5.6           |
| Oth Sts <sup>2</sup> | 54,518              | 76,311                   | 78,523              | 44.0           | 2.9            |
| US                   | 321,389             | 346,512                  | 337,472             | 5.0            | -2.6           |
| Atlantic             | 10,572              | 13,375                   | 11,060              | 4.6            | -17.3          |
| E N Cen              | 78,476              | 78,395                   | 74,300              | -5.3           | -5.2           |
| W N Cen              | 68,293              | 70,396                   | 68,015              | -0.4           | -3.4           |
| S Cen                | 3,851               | 4,049                    | 3,908               | 1.5            | -3.5           |
| West                 | 160,197             | 180,297                  | 180,189             | 12.5           | -0.1           |

<sup>1</sup> Revised.

<sup>2</sup> States not shown when fewer than 3 plants reported or individual plant operations could be disclosed. Percent change shown only when comparable States are included in the calculation.

**Cheddar Cheese: Production by State and United States, June 2005-2006**

| State                | Jun<br>2005         | May <sup>1</sup><br>2006 | Jun<br>2006         | Change From    |                |
|----------------------|---------------------|--------------------------|---------------------|----------------|----------------|
|                      |                     |                          |                     | Jun<br>2005    | May<br>2006    |
|                      | <i>1,000 Pounds</i> | <i>1,000 Pounds</i>      | <i>1,000 Pounds</i> | <i>Percent</i> | <i>Percent</i> |
| CA                   | 45,071              | 42,552                   | 40,958              | -9.1           | -3.7           |
| ID                   | 42,763              | 46,183                   | 45,077              | 5.4            | -2.4           |
| MN                   | 45,226              | 45,898                   | 45,500              | 0.6            | -0.9           |
| OH                   | 2,940               | 2,765                    | 2,634               | -10.4          | -4.7           |
| WI                   | 58,380              | 57,400                   | 53,000              | -9.2           | -7.7           |
| Oth Sts <sup>2</sup> | 63,831              | 80,500                   | 81,548              | 27.8           | 1.3            |
| US                   | 258,211             | 275,298                  | 268,717             | 4.1            | -2.4           |
| Atlantic             | 10,018              | 13,024                   | 10,627              | 6.1            | -18.4          |
| E N Cen              | 61,336              | 60,183                   | 55,649              | -9.3           | -7.5           |
| W N Cen              | 58,437              | 59,731                   | 58,615              | 0.3            | -1.9           |
| S Cen                | 3,851               | 4,049                    | 3,907               | 1.5            | -3.5           |
| West                 | 124,569             | 138,311                  | 139,919             | 12.3           | 1.2            |

<sup>1</sup> Revised.

<sup>2</sup> States not shown when fewer than 3 plants reported or individual plant operations could be disclosed. Percent change shown only when comparable States are included in the calculation.

**Italian Cheese, Total: Production by State and  
United States, June 2005-2006**

| State                | Jun<br>2005         | May <sup>1</sup><br>2006 | Jun<br>2006         | Change From    |                |
|----------------------|---------------------|--------------------------|---------------------|----------------|----------------|
|                      |                     |                          |                     | Jun<br>2005    | May<br>2006    |
|                      | <i>1,000 Pounds</i> | <i>1,000 Pounds</i>      | <i>1,000 Pounds</i> | <i>Percent</i> | <i>Percent</i> |
| CA                   | 89,936              | 98,847                   | 96,124              | 6.9            | -2.8           |
| ID                   | 11,073              | 13,862                   | 11,131              | 0.5            | -19.7          |
| NY                   | 31,970              | 31,746                   | 29,416              | -8.0           | -7.3           |
| PA                   | 23,424              | 23,113                   | 21,039              | -10.2          | -9.0           |
| SD                   | 7,354               | 8,334                    | 7,831               | 6.5            | -6.0           |
| WI                   | 89,785              | 94,663                   | 95,768              | 6.7            | 1.2            |
| Oth Sts <sup>2</sup> | 65,507              | 65,012                   | 63,878              | -2.5           | -1.7           |
| US <sup>3</sup>      | 319,049             | 335,577                  | 325,187             | 1.9            | -3.1           |
| Atlantic             | 65,507              | 63,334                   | 60,689              | -7.4           | -4.2           |
| E N Cen              | 104,744             | 110,000                  | 111,135             | 6.1            | 1.0            |
| West                 | 134,766             | 147,202                  | 139,249             | 3.3            | -5.4           |

<sup>1</sup> Revised.

<sup>2</sup> States not shown when fewer than 3 plants reported or individual plant operations could be disclosed. Percent change shown only when comparable States are included in the calculation.

<sup>3</sup> Region totals may not add to U.S. when compiled regions could not be disclosed.

**Mozzarella Cheese: Production by State and United States, June 2005-2006**

| State                | Jun<br>2005         | May <sup>1</sup><br>2006 | Jun<br>2006         | Change From    |                |
|----------------------|---------------------|--------------------------|---------------------|----------------|----------------|
|                      |                     |                          |                     | Jun<br>2005    | May<br>2006    |
|                      | <i>1,000 Pounds</i> | <i>1,000 Pounds</i>      | <i>1,000 Pounds</i> | <i>Percent</i> | <i>Percent</i> |
| CA                   | 81,657              | 87,320                   | 85,260              | 4.4            | -2.4           |
| ID                   | 9,466               | 12,262                   | 9,434               | -0.3           | -23.1          |
| NY                   | 16,394              | 16,949                   | 16,388              |                | -3.3           |
| PA                   | 18,826              | 19,283                   | 18,335              | -2.6           | -4.9           |
| WI                   | 66,688              | 70,200                   | 71,700              | 7.5            | 2.1            |
| Oth Sts <sup>2</sup> | 62,509              | 61,460                   | 60,643              | -3.0           | -1.3           |
| US <sup>3</sup>      | 255,540             | 267,474                  | 261,760             | 2.4            | -2.1           |
| Atlantic             | 42,749              | 41,612                   | 42,441              | -0.7           | 2.0            |
| E N Cen              | 79,586              | 83,114                   | 84,870              | 6.6            | 2.1            |
| West                 | 123,945             | 133,030                  | 125,831             | 1.5            | -5.4           |

<sup>1</sup> Revised.

<sup>2</sup> States not shown when fewer than 3 plants reported or individual plant operations could be disclosed. Percent change shown only when comparable States are included in the calculation.

<sup>3</sup> Region totals may not add to U.S. when compiled regions could not be disclosed.

**Butter: Production by State and United States, June 2005-2006**

| State                | Jun 2005            | May <sup>1</sup> 2006 | Jun 2006            | Change From    |                |
|----------------------|---------------------|-----------------------|---------------------|----------------|----------------|
|                      |                     |                       |                     | Jun 2005       | May 2006       |
|                      | <i>1,000 Pounds</i> | <i>1,000 Pounds</i>   | <i>1,000 Pounds</i> | <i>Percent</i> | <i>Percent</i> |
| CA                   | 32,218              | 37,670                | 31,687              | -1.6           | -15.9          |
| NY                   | 1,402               | 1,713                 | 1,208               | -13.8          | -29.5          |
| PA                   | 6,228               | 6,950                 | 6,044               | -3.0           | -13.0          |
| WI                   | 31,436              | 33,000                | 25,500              | -18.9          | -22.7          |
| Oth Sts <sup>2</sup> | 35,275              | 48,793                | 36,461              | 3.4            | -25.3          |
| US <sup>3</sup>      | 106,559             | 128,126               | 100,900             | -5.3           | -21.2          |
| N Atl                | 9,985               | 11,549                | 9,816               | -1.7           | -15.0          |
| E N Cen              | 32,859              | 35,999                | 27,418              | -16.6          | -23.8          |
| W N Cen              | 5,478               | 10,367                | 8,640               | 57.7           | -16.7          |
| West                 | 48,659              | 57,661                | 47,922              | -1.5           | -16.9          |

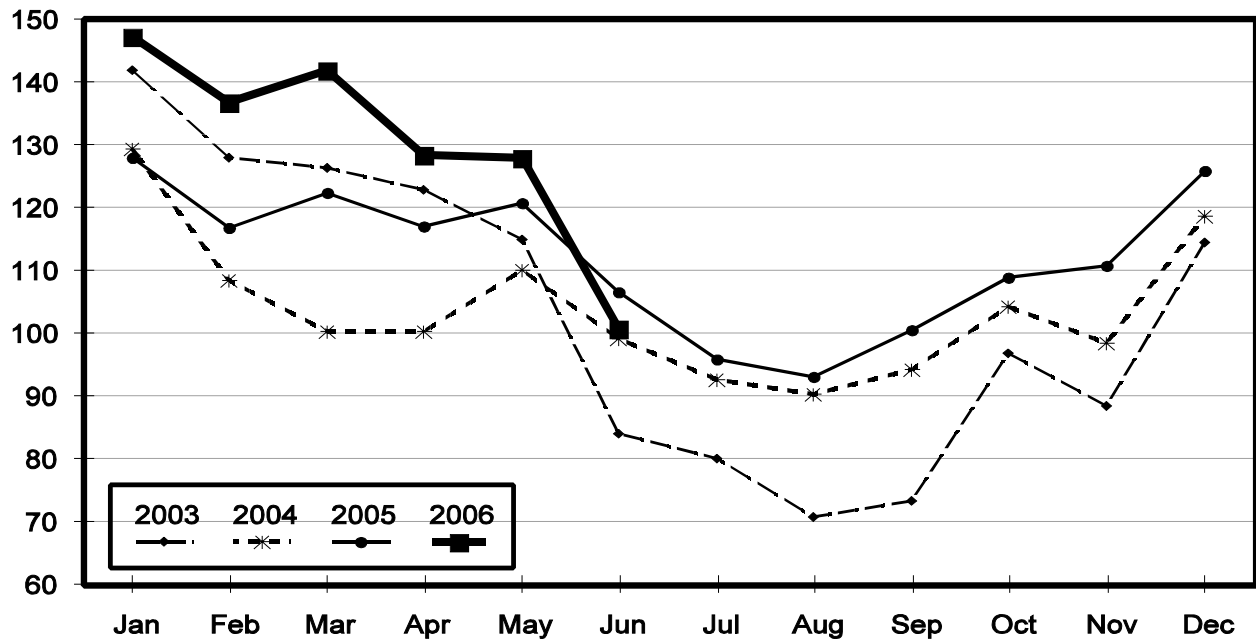
<sup>1</sup> Revised.

<sup>2</sup> States not shown when fewer than 3 plants reported or individual plant operations could be disclosed. Percent change shown only when comparable States are included in the calculation.

<sup>3</sup> Region totals may not add to U.S. when compiled regions could not be disclosed.

## Total Butter Production United States

Million Pounds





**Nonfat Dry Milk, Human: Production by State  
and United States, June 2005-2006**

| State                | Jun<br>2005         | May <sup>1</sup><br>2006 | Jun<br>2006         | Change From    |                |
|----------------------|---------------------|--------------------------|---------------------|----------------|----------------|
|                      |                     |                          |                     | Jun<br>2005    | May<br>2006    |
|                      | <i>1,000 Pounds</i> | <i>1,000 Pounds</i>      | <i>1,000 Pounds</i> | <i>Percent</i> | <i>Percent</i> |
| CA                   | 46,887              | 56,619                   | 51,739              | 10.3           | -8.6           |
| PA                   | 13,255              | 12,645                   | 11,681              | -11.9          | -7.6           |
| Oth Sts <sup>2</sup> | 64,064              | 62,998                   | 53,075              | -17.2          | -15.8          |
| US                   | 124,206             | 132,262                  | 116,495             | -6.2           | -11.9          |
| Atlantic             | 24,549              | 25,005                   | 22,622              | -7.8           | -9.5           |
| E N Cen              | 6,396               | 7,585                    | 6,541               | 2.3            | -13.8          |
| W N Cen              | 7,520               | 5,954                    | 5,397               | -28.2          | -9.4           |
| S Cen                | 8,224               | 6,082                    | 3,721               | -54.8          | -38.8          |
| West                 | 77,517              | 87,636                   | 78,214              | 0.9            | -10.8          |

<sup>1</sup> Revised.

<sup>2</sup> States not shown when fewer than 3 plants reported or individual plant operations could be disclosed. Percent change shown only when comparable States are included in the calculation.

**Dry Whey, Human: Production by State  
and United States, June 2005-2006**

| State                | Jun<br>2005         | May <sup>1</sup><br>2006 | Jun<br>2006         | Change From    |                |
|----------------------|---------------------|--------------------------|---------------------|----------------|----------------|
|                      |                     |                          |                     | Jun<br>2005    | May<br>2006    |
|                      | <i>1,000 Pounds</i> | <i>1,000 Pounds</i>      | <i>1,000 Pounds</i> | <i>Percent</i> | <i>Percent</i> |
| CA                   | 10,033              | 9,962                    | 8,366               | -16.6          | -16.0          |
| MN                   | 3,696               | 4,413                    | 4,337               | 17.3           | -1.7           |
| NY                   | 10,556              | 12,257                   | 11,603              | 9.9            | -5.3           |
| WI                   | 24,845              | 26,100                   | 25,100              | 1.0            | -3.8           |
| Oth Sts <sup>2</sup> | 32,236              | 39,105                   | 35,651              | 10.6           | -8.8           |
| US                   | 81,366              | 91,837                   | 85,057              | 4.5            | -7.4           |
| Atlantic             | 19,136              | 22,143                   | 20,231              | 5.7            | -8.6           |
| Central              | 38,530              | 40,663                   | 39,840              | 3.4            | -2.0           |
| West                 | 23,700              | 29,031                   | 24,986              | 5.4            | -13.9          |

<sup>1</sup> Revised.

<sup>2</sup> States not shown when fewer than 3 plants reported or individual plant operations could be disclosed. Percent change shown only when comparable States are included in the calculation.

**Ice Cream, Hard: Production by State and United States, June 2005-2006**

| State                | Jun<br>2005          | May <sup>1</sup><br>2006 | Jun<br>2006          | Change From    |                |
|----------------------|----------------------|--------------------------|----------------------|----------------|----------------|
|                      |                      |                          |                      | Jun<br>2005    | May<br>2006    |
|                      | <i>1,000 Gallons</i> | <i>1,000 Gallons</i>     | <i>1,000 Gallons</i> | <i>Percent</i> | <i>Percent</i> |
| CA                   | 14,264               | 11,321                   | 14,204               | -0.4           | 25.5           |
| FL                   | 1,871                | 2,100                    | 2,050                | 9.6            | -2.4           |
| IN                   | 8,196                | 6,293                    | 7,499                | -8.5           | 19.2           |
| MD                   | 2,094                | 1,722                    | 1,707                | -18.5          | -0.9           |
| MA                   | 4,449                | 5,159                    | 4,156                | -6.6           | -19.4          |
| MN                   | 4,881                | 4,487                    | 4,529                | -7.2           | 0.9            |
| MO                   | 2,366                | 2,449                    | 2,430                | 2.7            | -0.8           |
| NY                   | 2,929                | 2,657                    | 3,023                | 3.2            | 13.8           |
| OH                   | 2,758                | 2,359                    | 2,699                | -2.1           | 14.4           |
| OR                   | 779                  | 1,248                    | 1,316                | 68.9           | 5.4            |
| PA                   | 4,575                | 3,136                    | 3,336                | -27.1          | 6.4            |
| TN                   | 1,568                | 1,513                    | 1,715                | 9.4            | 13.4           |
| TX                   | 5,772                | 5,475                    | 6,502                | 12.6           | 18.8           |
| UT                   | 2,607                | 2,649                    | 2,959                | 13.5           | 11.7           |
| Oth Sts <sup>2</sup> | 32,081               | 29,560                   | 30,042               | -6.4           | 1.6            |
| US                   | 91,190               | 82,128                   | 88,167               | -3.3           | 7.4            |
| N Atl                | 16,823               | 14,529                   | 13,865               | -17.6          | -4.6           |
| S Atl                | 7,261                | 7,051                    | 6,704                | -7.7           | -4.9           |
| E N Cen              | 17,241               | 14,655                   | 16,215               | -6.0           | 10.6           |
| W N Cen              | 16,238               | 15,623                   | 16,157               | -0.5           | 3.4            |
| S Cen                | 11,930               | 11,499                   | 13,190               | 10.6           | 14.7           |
| West                 | 21,697               | 18,771                   | 22,036               | 1.6            | 17.4           |

<sup>1</sup> Revised.

<sup>2</sup> States not shown when fewer than 3 plants reported or individual plant operations could be disclosed. Percent change shown only when comparable States are included in the calculation.

**Canned Milk and Dry Milk Products: Manufacturers' Shipments,  
and Stocks, June, 2005-2006**

| Product   | Jun<br>2005         | May<br>2006 <sup>1</sup> | Jun<br>2006         | Change From    |                |
|---|---------------------|--------------------------|---------------------|----------------|----------------|
|   |                     |                          |                     | Jun<br>2005    | May<br>2006    |
| <b>Manufacturers' Shipments<sup>2</sup></b>           |                     |                          |                     |                |                |
|   | <i>1,000 Pounds</i> | <i>1,000 Pounds</i>      | <i>1,000 Pounds</i> | <i>Percent</i> | <i>Percent</i> |
| Nonfat Dry Milk, Human                                | 110,141             | 131,946                  | 139,575             | 26.7           | 5.8            |
| <b>Manufacturers' Stocks End-of-Month<sup>3</sup></b> |                     |                          |                     |                |                |
|   | <i>1,000 Pounds</i> | <i>1,000 Pounds</i>      | <i>1,000 Pounds</i> | <i>Percent</i> | <i>Percent</i> |
| Canned Evaporated and<br>Condensed Whole Milk         | 71,530              | 79,363                   | 73,381              | 2.6            | -7.5           |
| Nonfat Dry Milk, Human                                | 117,496             | 145,410                  | 110,478             | -6.0           | -24.0          |
| Dry Buttermilk, Total                                 | 9,766               | 14,456                   | 10,530              | 7.8            | -27.2          |

<sup>1</sup> Revised.

<sup>2</sup> For dry products, shipments of bulk goods only.

<sup>3</sup> Stocks held by manufacturers at all points and in transit.

**Procedures and Reliability:** Estimates included in this report are based on data provided each month by manufacturers of these products. In 32 States, the State Departments of Agriculture assist in collection of data, which eliminates duplicate reporting and reduces respondent burden. Data are collected by mail, personal and telephone interviews following the close of each month. There were 1,081 manufacturers that made one or more products in 2005. Each month, reports are generally received from all dairy plants in States with small numbers of plants. In States with large numbers of plants, survey procedures are designed to obtain monthly reports from all large plants and from a sample of small plants. Monthly estimates are based upon returns from about 70 percent of the plants which account for 70 to 90 percent of the total production of major dairy products.

**Revision Policy:** Monthly estimates are subject to revision the month following the preliminary estimates. Annual estimates are published in the "**Dairy Products**" report published each April which includes any revisions made to current and previous year. An attempt is made to get information from all plants for preparing these estimates

### Information Contacts

Listed below are the commodity specialists in the Livestock Branch of the National Agricultural Statistics Service to contact for additional information.

- Dan Kerestes, Chief, Livestock Branch . . . . . (202) 720-3570
- William Weaver, Head, Livestock Section . . . . . (202) 720-3570
  - Bruce Boess - Hogs and Pigs . . . . . (202) 720-3106
  - Shawn Clark - Dairy Products . . . . . (202) 690-3236
  - Scott Hollis - Sheep & Lambs, Goats . . . . . (202) 720-4751
  - Mike Miller - Cattle, Cattle on Feed . . . . . (202) 720-3040
  - Katy Paulsen - Livestock Slaughter . . . . . (515) 284-4340
  - Jason Hardegree - Milk Production and Milk Cows . . . . . (202) 720-3278
  - Charmaine Wilson - Dairy Products Prices . . . . . (202) 690-2168

## ACCESS TO REPORTS!!

---

For your convenience, there are several ways to obtain NASS reports, data products, and services:

### INTERNET ACCESS

All NASS reports are available free of charge on the worldwide Internet. For access, connect to the Internet and go to the NASS Home Page at: [www.nass.usda.gov](http://www.nass.usda.gov).

### E-MAIL SUBSCRIPTION

All NASS reports are available by subscription free of charge direct to your e-mail address. Starting with the NASS Home Page at [www.nass.usda.gov](http://www.nass.usda.gov), under the right navigation, *Receive reports by Email*, click on **National** or **State**. Follow the instructions on the screen.

-----

### PRINTED REPORTS OR DATA PRODUCTS

**CALL OUR TOLL-FREE ORDER DESK: 800-999-6779 (U.S. and Canada)**  
**Other areas, please call 703-605-6220      FAX: 703-605-6900**  
**(Visa, MasterCard, check, or money order acceptable for payment.)**

-----

### ASSISTANCE

For **assistance** with general agricultural statistics or further information about NASS or its products or services, contact the **Agricultural Statistics Hotline** at **800-727-9540**, 7:30 a.m. to 4:00 p.m. ET, or e-mail: [nass@nass.usda.gov](mailto:nass@nass.usda.gov).

The U.S. Department of Agriculture (USDA) prohibits discrimination in all its programs and activities on the basis of race, color, national origin, age, disability, and where applicable, sex, marital status, familial status, parental status, religion, sexual orientation, genetic information, political beliefs, reprisal, or because all or part of an individual's income is derived from any public assistance program. (Not all prohibited bases apply to all programs.) Persons with disabilities who require alternative means for communication of program information (Braille, large print, audiotape, etc.) should contact USDA's TARGET Center at (202) 720-2600 (voice and TDD).

To file a complaint of discrimination, write to USDA, Director, Office of Civil Rights, 1400 Independence Avenue, S.W., Washington, D.C. 20250-9410, or call (800) 795-3272 (voice) or (202) 720-6382 (TDD). USDA is an equal opportunity provider and employer.