



NASS

FACT FINDERS FOR AGRICULTURE
UNITED STATES DEPARTMENT OF AGRICULTURE

Washington, D.C.

Dairy Products

Released September 1, 2006, by the National Agricultural Statistics Service (NASS), Agricultural Statistics Board, U.S. Department of Agriculture. For information on *Dairy Products* call Shawn Clark at (202) 690-3236, office hours 7:30 a.m. to 4:00 p.m. ET.

July 2006 Highlights

Total cheese output (excluding cottage cheese) was 768 million pounds, 3.9 percent above July 2005 but 3.3 percent below June 2006.

Italian type cheese production totaled 318 million pounds, 5.0 percent above July 2005 but 2.4 percent below June 2006.

American type cheese production totaled 329 million pounds, 4.0 percent above July 2005 but 2.5 percent below June 2006.

Butter production was 92.7 million pounds, 3.3 percent below July 2005 and 8.0 percent below June 2006.

Frozen dessert: (comparisons with July 2005)

Ice cream, Regular (hard) --- 85.4 million gallons, down 1.8 percent.

Ice cream, Lowfat (total) --- 36.9 million gallons, up slightly.

Ice cream, Nonfat (hard) --- 1.38 million gallons, down 37.1 percent.

Sherbet (hard) --- 5.27 million gallons, down 2.9 percent.

Frozen Yogurt (total) --- 6.26 million gallons, up 6.7 percent.

Nonfat dry milk for human food: (compared with July 2005) --- 88.2 million pounds, down 18.9 percent.

Dry whey products: (comparisons with July 2005)

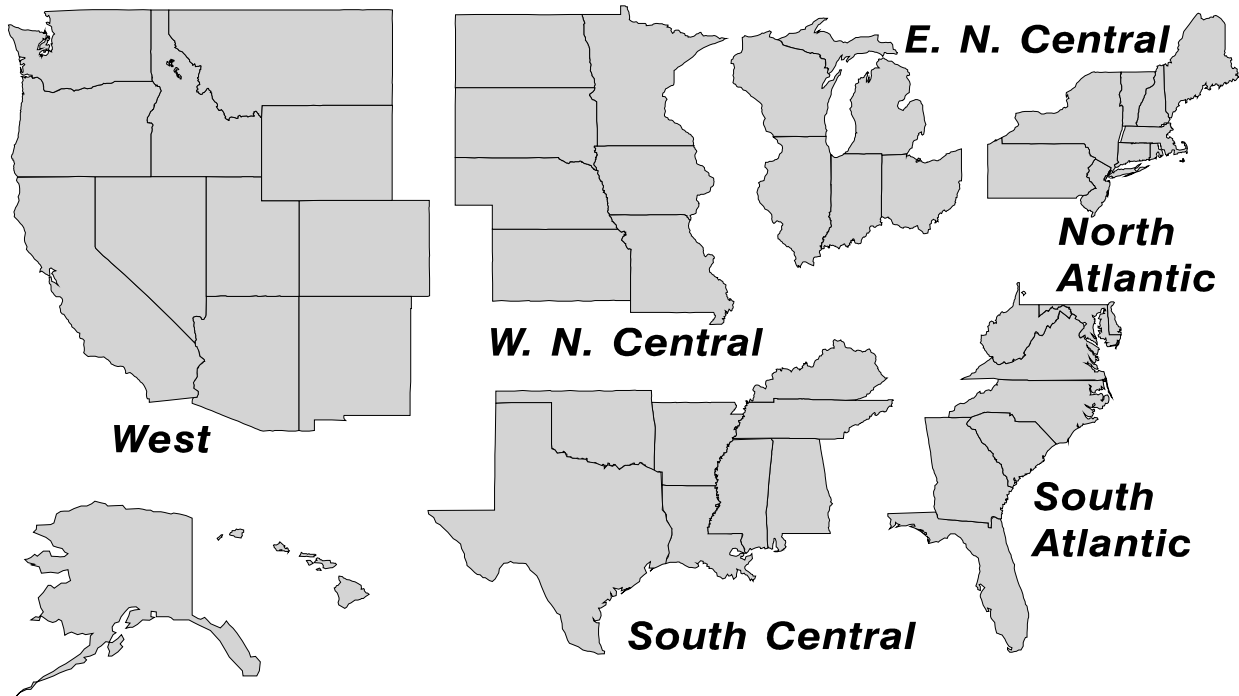
Dry whey, human --- 84.9 million pounds, up 5.0 percent.

Dry whey, animal --- 5.47 million pounds, down 33.7 percent.

Dry whey, total --- 90.4 million pounds, up 1.4 percent.

U. S. Geographic Regions Dairy Products

State totals are not published when fewer than 3 firms have reported or one firm comprises more than 60 percent of the State total. If we are not able to publish a region for confidentiality reasons, it will be combined with other regions when possible. For example, if North Atlantic can not be published, then it will be combined with South Atlantic to publish Atlantic. The West North Central and East North Central will be combined, if necessary, to form North Central. In the event that neither could be published, they may be combined with South Central to publish Central. Some tables will have only limited regions shown, therefore the regions may not add to the United States total.



Contents

Page

Dairy Products: Production by Product, United States	1
Whey and Modified Whey Products: Production, Stocks, and Prices, United States	2
Dairy Products: Production by Product and Month, United States	3
Select Commodities by State and United States	10
Canned Milk and Dry Milk Products: Manufacturer's Shipments, Stocks, and Selling Prices	15
Procedures and Reliability	16
Information Contacts	16

**Dairy Products: Production by Product,
United States, July, 2005-2006**

Product	Jul 2005	Jun 2006 ¹	Jul 2006	Change From	
				Jul 2005	Jun 2006
	<i>1,000 Pounds</i>	<i>1,000 Pounds</i>	<i>1,000 Pounds</i>	<i>Percent</i>	<i>Percent</i>
Butter	95,929	100,779	92,725	-3.3	-8.0
Cheese					
American Types ²	315,977	337,024	328,578	4.0	-2.5
Cheddar	252,709	268,350	267,434	5.8	-0.3
Swiss	24,554	25,525	24,809	1.0	-2.8
Brick and Muenster	7,388	9,340	8,853	19.8	-5.2
Cream and Neufchatel	54,423	57,345	51,579	-5.2	-10.1
Hispanic	12,885	14,374	14,201	10.2	-1.2
Mozzarella	243,304	261,675	254,881	4.8	-2.6
Other Italian Types	59,750	64,339	63,423	6.1	-1.4
Total Italian Types	303,054	326,014	318,304	5.0	-2.4
All Other Types	21,191	24,315	21,625	2.0	-11.1
Total	739,472	793,937	767,949	3.9	-3.3
Cottage Cheese, Curd ³	38,090	37,605	36,614	-3.9	-2.6
Cottage Cheese, Cream ⁴	31,938	31,096	29,025	-9.1	-6.7
Cottage Cheese, Lowfat ⁵	32,436	33,458	32,739	0.9	-2.1
Canned Evaporated and Condensed Whole Milk	42,676	43,833	39,450	-7.6	-10.0
Dry Whole Milk	1,994	2,410	2,955	48.2	22.6
Nonfat Dry Milk, Human Skim Milk Powders ⁶	108,865	117,049	88,240	-18.9	-24.6
Dry Skim Milk, Animal	505	579	607	20.2	4.8
Dry Buttermilk	4,601	4,780	4,075	-11.4	-14.7
Sour Cream	79,324	89,599	84,798	6.9	-5.4
Yogurt, Plain & Flavored	244,608	272,551	262,997	7.5	-3.5
	<i>1,000 Gallons</i>	<i>1,000 Gallons</i>	<i>1,000 Gallons</i>	<i>Percent</i>	<i>Percent</i>
Frozen Products					
Ice Cream, Regular, Hard	87,054	87,898	85,446	-1.8	-2.8
Ice Cream, Lowfat, Hard	10,345	13,580	11,100	7.3	-18.3
Ice Cream, Lowfat, Soft	26,583	28,419	25,843	-2.8	-9.1
Ice Cream, Lowfat, Total	36,928	41,999	36,943		-12.0
Ice Cream, Nonfat, Hard	2,188	1,402	1,377	-37.1	-1.8
Sherbet, Hard	5,425	5,210	5,266	-2.9	1.1
Water and Juice Ices	6,992	6,853	6,679	-4.5	-2.5
Frozen Yogurt, Total	5,867	6,882	6,262	6.7	-9.0
Regular & Lowfat, Hard	1,771	1,587	1,555	-12.2	-2.0
Nonfat, Hard	1,018	1,078	1,059	4.0	-1.8
Other Frozen Dairy Products	689	1,034	1,043	51.4	0.9
Mix for Frozen Products					
Ice Cream Mix	49,254	49,505	48,852	-0.8	-1.3
Ice Cream, Lowfat, Mix	21,894	24,165	21,317	-2.6	-11.8
Ice Cream, Nonfat, Mix	1,374	881	817	-40.5	-7.3
Sherbet Mix	4,062	3,656	3,538	-12.9	-3.2
Yogurt Mix	3,582	4,171	3,795	5.9	-9.0

¹ Revised.

² Includes Cheddar, Colby, Monterey, and Jack.

³ Mostly used for processing into cream or lowfat cottage cheese.

⁴ Fat content 4 percent or more.

⁵ Fat content less than 4 percent.

⁶ Includes protein standardized and blends.

**Whey and Modified Whey Products: Production, Stocks,
and Prices, United States, July, 2005-2006**

Product	Jul 2005	Jun 2006 ¹	Jul 2006	Change From	
				Jul 2005	Jun 2006
Production					
	<i>1,000 Pounds</i>	<i>1,000 Pounds</i>	<i>1,000 Pounds</i>	<i>Percent</i>	<i>Percent</i>
Condensed Whey, Solids Content ²					
Sweet-Type, Human	6,331	8,067	8,564	35.3	6.2
Dry Whey Products					
Dry Whey, Human	80,894	85,202	84,928	5.0	-0.3
Dry Whey, Animal	8,249	4,966	5,466	-33.7	10.1
Dry Whey, Total	89,143	90,168	90,394	1.4	0.3
Reduced Lactose and Minerals					
Human Food	4,300	3,242	3,376	-21.5	4.1
Animal Feed	5,637	3,980	3,778	-33.0	-5.1
Lactose, Human and Animal	55,375	56,335	55,139	-0.4	-2.1
Whey					
Protein Concentrate					
Human ³	27,071	29,894	29,849	10.3	-0.2
Animal ³	4,295	4,517	4,259	-0.8	-5.7
Total ³	31,366	34,411	34,108	8.7	-0.9
25.0-49.9 Percent ⁴	22,584	23,782	24,300	7.6	2.2
50.0-89.9 Percent ⁴	8,782	10,629	9,808	11.7	-7.7
Protein Isolates ⁵	2,199	2,567	2,455	11.6	-4.4
Manufacturers' Stocks End-of-Month ⁶					
	<i>1,000 Pounds</i>	<i>1,000 Pounds</i>	<i>1,000 Pounds</i>	<i>Percent</i>	<i>Percent</i>
Dry Whey Products					
Dry Whey, Human	36,710	40,697	38,527	4.9	-5.3
Dry Whey, Animal	4,533	2,559	2,898	-36.1	13.2
Dry Whey, Total	41,243	43,256	41,425	0.4	-4.2
Reduced Lactose and Minerals					
Human and Animal ⁷	4,570	4,618	4,492	-1.7	-2.7
Lactose, Human and Animal	58,330	41,479	40,282	-30.9	-2.9
Whey					
Protein Concentrate					
Human ³	24,345	28,579	28,217	15.9	-1.3
Animal ³	1,990	2,441	2,498	25.5	2.3
Total ³	26,335	31,020	30,715	16.6	-1.0
25.0-49.9 Percent ⁴	16,284	18,918	19,202	17.9	1.5
50.0-89.9 Percent ⁴	10,051	12,102	11,513	14.5	-4.9
Manufacturers' Selling Price ⁸					
	<i>Cents per Pound</i>	<i>Cents per Pound</i>	<i>Cents per Pound</i>	<i>Cents Change</i>	<i>Cents Change</i>
Dry Whey, Animal	25.2	23.2	23.6	-1.6	0.4

¹ Revised.

² Final marketable product only. Does not include quantity used or shipped to another plant for further processing into dry whey or modified whey products. Does not include sweet-type, animal whey.

³ Whey Protein Concentrate, 25.0 to 89.9 percent.

⁴ Whey Protein Concentrate, Human and Animal.

⁵ Whey Protein Isolate, 90.0 percent or greater.

⁶ Stocks held by manufacturers at all points and in transit.

⁷ Reduced lactose and minerals stocks combined to avoid disclosure of individual operations.

⁸ Prices for bulk goods, f.o.b. plant. Average monthly prices reported by firms.

**Dairy Products: Production by Product and Month,
United States, 2005-2006 ¹**

Product and Month	By Month			Cumulative		
	2005	2006	Change From 2005	2005	2006	Change From 2005
	<i>1,000 Pounds</i>	<i>1,000 Pounds</i>	<i>Percent</i>	<i>1,000 Pounds</i>	<i>1,000 Pounds</i>	<i>Percent</i>
Total Cheese						
Jan	753,967	772,337	2.4	753,967	772,337	2.4
Feb	704,633	720,978	2.3	1,458,600	1,493,315	2.4
Mar	797,511	812,634	1.9	2,256,111	2,305,949	2.2
Apr	754,849	786,477	4.2	3,010,960	3,092,426	2.7
May	783,943	811,591	3.5	3,794,903	3,904,017	2.9
Jun	764,468	793,937	3.9	4,559,371	4,697,954	3.0
Jul	739,472	767,949	3.9	5,298,843	5,465,903	3.2
Aug	757,402			6,056,245		
Sep	745,485			6,801,730		
Oct	760,407			7,562,137		
Nov	766,061			8,328,198		
Dec	798,909			9,127,107		
American Cheese						
Jan	322,332	324,545	0.7	322,332	324,545	0.7
Feb	292,238	304,376	4.2	614,570	628,921	2.3
Mar	331,468	338,383	2.1	946,038	967,304	2.2
Apr	327,575	338,715	3.4	1,273,613	1,306,019	2.5
May	332,501	346,512	4.2	1,606,114	1,652,531	2.9
Jun	321,389	337,024	4.9	1,927,503	1,989,555	3.2
Jul	315,977	328,578	4.0	2,243,480	2,318,133	3.3
Aug	312,028			2,555,508		
Sep	301,791			2,857,299		
Oct	312,321			3,169,620		
Nov	313,195			3,482,815		
Dec	330,135			3,812,950		
Cheddar Cheese						
Jan	261,868	265,809	1.5	261,868	265,809	1.5
Feb	237,987	246,344	3.5	499,855	512,153	2.5
Mar	268,668	270,553	0.7	768,523	782,706	1.8
Apr	262,787	273,664	4.1	1,031,310	1,056,370	2.4
May	265,569	275,298	3.7	1,296,879	1,331,668	2.7
Jun	258,211	268,350	3.9	1,555,090	1,600,018	2.9
Jul	252,709	267,434	5.8	1,807,799	1,867,452	3.3
Aug	245,144			2,052,943		
Sep	239,629			2,292,572		
Oct	248,910			2,541,482		
Nov	248,464			2,789,946		
Dec	262,469			3,052,415		

See footnote(s) at end of table.

--continued

**Dairy Products: Production by Product and Month,
United States, 2005-2006 ¹ (continued)**

Product and Month	By Month			Cumulative		
	2005	2006	Change From 2005	2005	2006	Change From 2005
	<i>1,000 Pounds</i>	<i>1,000 Pounds</i>	<i>Percent</i>	<i>1,000 Pounds</i>	<i>1,000 Pounds</i>	<i>Percent</i>
Italian Cheese						
Jan	316,288	328,315	3.8	316,288	328,315	3.8
Feb	299,673	307,623	2.7	615,961	635,938	3.2
Mar	338,682	346,179	2.2	954,643	982,117	2.9
Apr	310,719	328,588	5.8	1,265,362	1,310,705	3.6
May	327,196	335,577	2.6	1,592,558	1,646,282	3.4
Jun	319,049	326,014	2.2	1,911,607	1,972,296	3.2
Jul	303,054	318,304	5.0	2,214,661	2,290,600	3.4
Aug	311,518			2,526,179		
Sep	310,339			2,836,518		
Oct	311,901			3,148,419		
Nov	320,304			3,468,723		
Dec	336,007			3,804,730		
Mozzarella						
Jan	250,595	259,574	3.6	250,595	259,574	3.6
Feb	239,382	242,804	1.4	489,977	502,378	2.5
Mar	269,830	273,870	1.5	759,807	776,248	2.2
Apr	247,184	261,653	5.9	1,006,991	1,037,901	3.1
May	262,238	267,474	2.0	1,269,229	1,305,375	2.8
Jun	255,540	261,675	2.4	1,524,769	1,567,050	2.8
Jul	243,304	254,881	4.8	1,768,073	1,821,931	3.0
Aug	244,631			2,012,704		
Sep	243,687			2,256,391		
Oct	243,671			2,500,062		
Nov	252,933			2,752,995		
Dec	267,803			3,020,798		
Other Italian						
Jan	65,693	68,741	4.6	65,693	68,741	4.6
Feb	60,291	64,819	7.5	125,984	133,560	6.0
Mar	68,852	72,309	5.0	194,836	205,869	5.7
Apr	63,535	66,935	5.4	258,371	272,804	5.6
May	64,958	68,103	4.8	323,329	340,907	5.4
Jun	63,509	64,339	1.3	386,838	405,246	4.8
Jul	59,750	63,423	6.1	446,588	468,669	4.9
Aug	66,887			513,475		
Sep	66,652			580,127		
Oct	68,230			648,357		
Nov	67,371			715,728		
Dec	68,204			783,932		

See footnote(s) at end of table.

--continued

**Dairy Products: Production by Product and Month,
United States, 2005-2006 ¹ (continued)**

Product and Month	By Month			Cumulative		
	2005	2006	Change From 2005	2005	2006	Change From 2005
	<i>1,000 Pounds</i>	<i>1,000 Pounds</i>	<i>Percent</i>	<i>1,000 Pounds</i>	<i>1,000 Pounds</i>	<i>Percent</i>
Butter						
Jan	128,020	147,251	15.0	128,020	147,251	15.0
Feb	116,927	136,953	17.1	244,947	284,204	16.0
Mar	122,402	141,993	16.0	367,349	426,197	16.0
Apr	117,061	128,457	9.7	484,410	554,654	14.5
May	120,715	128,126	6.1	605,125	682,780	12.8
Jun	106,559	100,779	-5.4	711,684	783,559	10.1
Jul	95,929	92,725	-3.3	807,613	876,284	8.5
Aug	93,194			900,807		
Sep	100,647			1,001,454		
Oct	108,915			1,110,369		
Nov	110,905			1,221,274		
Dec	125,953			1,347,227		
Nonfat Dry Milk, Human						
Jan	93,261	107,254	15.0	93,261	107,254	15.0
Feb	97,275	117,466	20.8	190,536	224,720	17.9
Mar	109,299	128,269	17.4	299,835	352,989	17.7
Apr	104,876	129,225	23.2	404,711	482,214	19.2
May	124,329	132,262	6.4	529,040	614,476	16.1
Jun	124,206	117,049	-5.8	653,246	731,525	12.0
Jul	108,865	88,240	-18.9	762,111	819,765	7.6
Aug	86,679			848,790		
Sep	70,954			919,744		
Oct	73,554			993,298		
Nov	89,095			1,082,393		
Dec	103,711			1,186,104		
Total Dry Whey ²						
Jan	85,936	88,243	2.7	85,936	88,243	2.7
Feb	79,665	89,713	12.6	165,601	177,956	7.5
Mar	91,775	101,239	10.3	257,376	279,195	8.5
Apr	91,260	96,339	5.6	348,636	375,534	7.7
May	94,083	97,119	3.2	442,719	472,653	6.8
Jun	89,357	90,168	0.9	532,076	562,821	5.8
Jul	89,143	90,394	1.4	621,219	653,215	5.2
Aug	87,438			708,657		
Sep	83,948			792,605		
Oct	82,186			874,791		
Nov	84,844			959,635		
Dec	86,187			1,045,822		

See footnote(s) at end of table.

--continued

**Dairy Products: Production by Product and Month,
United States, 2005-2006 ¹ (continued)**

Product and Month	By Month			Cumulative		
	2005	2006	Change From 2005	2005	2006	Change From 2005
	<i>1,000 Pounds</i>	<i>1,000 Pounds</i>	<i>Percent</i>	<i>1,000 Pounds</i>	<i>1,000 Pounds</i>	<i>Percent</i>
Cream Cottage Cheese						
Jan	29,553	27,785	-6.0	29,553	27,785	-6.0
Feb	27,833	27,193	-2.3	57,386	54,978	-4.2
Mar	32,682	32,115	-1.7	90,068	87,093	-3.3
Apr	30,623	28,580	-6.7	120,691	115,673	-4.2
May	31,463	31,383	-0.3	152,154	147,056	-3.4
Jun	32,266	31,096	-3.6	184,420	178,152	-3.4
Jul	31,938	29,025	-9.1	216,358	207,177	-4.2
Aug	33,782			250,140		
Sep	33,011			283,151		
Oct	30,269			313,420		
Nov	28,679			342,099		
Dec	26,058			368,157		
Lowfat Cottage Cheese						
Jan	30,843	31,617	2.5	30,843	31,617	2.5
Feb	32,060	30,818	-3.9	62,903	62,435	-0.7
Mar	35,064	35,940	2.5	97,967	98,375	0.4
Apr	32,706	31,668	-3.2	130,673	130,043	-0.5
May	34,904	35,108	0.6	165,577	165,151	-0.3
Jun	35,362	33,458	-5.4	200,939	198,609	-1.2
Jul	32,436	32,739	0.9	233,375	231,348	-0.9
Aug	35,568			268,943		
Sep	34,506			303,449		
Oct	32,642			336,091		
Nov	31,406			367,497		
Dec	28,574			396,071		
	<i>1,000 Gallons</i>	<i>1,000 Gallons</i>	<i>Percent</i>	<i>1,000 Gallons</i>	<i>1,000 Gallons</i>	<i>Percent</i>
Ice Cream, Regular, Hard						
Jan	62,103	61,826	-0.4	62,103	61,826	-0.4
Feb	65,827	62,916	-4.4	127,930	124,742	-2.5
Mar	78,753	77,869	-1.1	206,683	202,611	-2.0
Apr	78,091	77,408	-0.9	284,774	280,019	-1.7
May	78,375	82,128	4.8	363,149	362,147	-0.3
Jun	91,190	87,898	-3.6	454,339	450,045	-0.9
Jul	87,054	85,446	-1.8	541,393	535,491	-1.1
Aug	89,142			630,535		
Sep	72,359			702,894		
Oct	69,862			772,756		
Nov	61,133			833,889		
Dec	54,854			888,743		

See footnote(s) at end of table.

--continued

**Dairy Products: Production by Product and Month,
United States, 2005-2006 ¹ (continued)**

Product and Month	By Month			Cumulative		
	2005	2006	Change From 2005	2005	2006	Change From 2005
	<i>1,000 Gallons</i>	<i>1,000 Gallons</i>	<i>Percent</i>	<i>1,000 Gallons</i>	<i>1,000 Gallons</i>	<i>Percent</i>
Ice Cream, Lowfat						
Jan	24,199	25,444	5.1	24,199	25,444	5.1
Feb	26,181	24,134	-7.8	50,380	49,578	-1.6
Mar	32,927	31,475	-4.4	83,307	81,053	-2.7
Apr	33,192	32,054	-3.4	116,499	113,107	-2.9
May	33,123	37,226	12.4	149,622	150,333	0.5
Jun	38,572	41,999	8.9	188,194	192,332	2.2
Jul	36,928	36,943		225,122	229,275	1.8
Aug	35,592			260,714		
Sep	30,745			291,459		
Oct	27,013			318,472		
Nov	23,770			342,242		
Dec	21,726			363,968		
Ice Cream, NF, Hard						
Jan	1,205	1,330	10.4	1,205	1,330	10.4
Feb	1,715	1,254	-26.9	2,920	2,584	-11.5
Mar	1,686	1,607	-4.7	4,606	4,191	-9.0
Apr	1,682	1,324	-21.3	6,288	5,515	-12.3
May	1,730	1,486	-14.1	8,018	7,001	-12.7
Jun	1,923	1,402	-27.1	9,941	8,403	-15.5
Jul	2,188	1,377	-37.1	12,129	9,780	-19.4
Aug	1,910			14,039		
Sep	1,611			15,650		
Oct	1,538			17,188		
Nov	1,319			18,507		
Dec	1,153			19,660		
Sherbet, Hard						
Jan	3,838	3,893	1.4	3,838	3,893	1.4
Feb	4,036	4,173	3.4	7,874	8,066	2.4
Mar	4,924	4,582	-6.9	12,798	12,648	-1.2
Apr	5,111	4,557	-10.8	17,909	17,205	-3.9
May	4,934	4,791	-2.9	22,843	21,996	-3.7
Jun	5,825	5,210	-10.6	28,668	27,206	-5.1
Jul	5,425	5,266	-2.9	34,093	32,472	-4.8
Aug	5,632			39,725		
Sep	4,953			44,678		
Oct	3,724			48,402		
Nov	3,442			51,844		
Dec	3,436			55,280		

See footnote(s) at end of table.

--continued

**Dairy Products: Production by Product and Month,
United States, 2005-2006 ¹ (continued)**

Product and Month	By Month			Cumulative		
	2005	2006	Change From 2005	2005	2006	Change From 2005
	<i>1,000 Pounds</i>	<i>1,000 Pounds</i>	<i>Percent</i>	<i>1,000 Pounds</i>	<i>1,000 Pounds</i>	<i>Percent</i>
Sour Cream						
Jan	76,976	81,288	5.6	76,976	81,288	5.6
Feb	73,791	76,832	4.1	150,767	158,120	4.9
Mar	87,637	89,000	1.6	238,404	247,120	3.7
Apr	72,323	79,298	9.6	310,727	326,418	5.0
May	86,250	91,426	6.0	396,977	417,844	5.3
Jun	85,798	89,599	4.4	482,775	507,443	5.1
Jul	79,324	84,798	6.9	562,099	592,241	5.4
Aug	90,935			653,034		
Sep	79,208			732,242		
Oct	90,019			822,261		
Nov	108,466			930,727		
Dec	99,090			1,029,817		

See footnote(s) at end of table.

--continued

**Dairy Products: Production by Product and Month,
United States, 2005-2006 ¹ (continued)**

Product and Month	By Month			Cumulative		
	2005	2006	Change From 2005	2005	2006	Change From 2005
	<i>1,000 Pounds</i>	<i>1,000 Pounds</i>	<i>Percent</i>	<i>1,000 Pounds</i>	<i>1,000 Pounds</i>	<i>Percent</i>
Yogurt						
Jan	224,187	252,353	12.6	224,187	252,353	12.6
Feb	236,193	238,108	0.8	460,380	490,461	6.5
Mar	275,949	280,577	1.7	736,329	771,038	4.7
Apr	247,409	254,096	2.7	983,738	1,025,134	4.2
May	264,459	267,283	1.1	1,248,197	1,292,417	3.5
Jun	263,178	272,551	3.6	1,511,375	1,564,968	3.5
Jul	244,608	262,997	7.5	1,755,983	1,827,965	4.1
Aug	265,359			2,021,342		
Sep	273,643			2,294,985		
Oct	249,329			2,544,314		
Nov	219,567			2,763,881		
Dec	225,908			2,989,789		

See footnote(s) at end of table.

--continued

**Dairy Products: Production by Product and Month,
United States, 2005-2006 ¹ (continued)**

Product and Month	By Month			Cumulative		
	2005	2006	Change From 2005	2005	2006	Change From 2005
	<i>1,000 Gallons</i>	<i>1,000 Gallons</i>	<i>Percent</i>	<i>1,000 Gallons</i>	<i>1,000 Gallons</i>	<i>Percent</i>
Frozen Yogurt						
Jan	4,353	4,131	-5.1	4,353	4,131	-5.1
Feb	4,910	4,524	-7.9	9,263	8,655	-6.6
Mar	5,942	6,044	1.7	15,205	14,699	-3.3
Apr	5,737	5,960	3.9	20,942	20,659	-1.4
May	6,239	6,663	6.8	27,181	27,322	0.5
Jun	6,412	6,882	7.3	33,593	34,204	1.8
Jul	5,867	6,262	6.7	39,460	40,466	2.5
Aug	6,142			45,602		
Sep	5,456			51,058		
Oct	5,114			56,172		
Nov	4,419			60,591		
Dec	4,460			65,051		

¹ June 2006 data revised.

² Excludes all modified dry whey products.

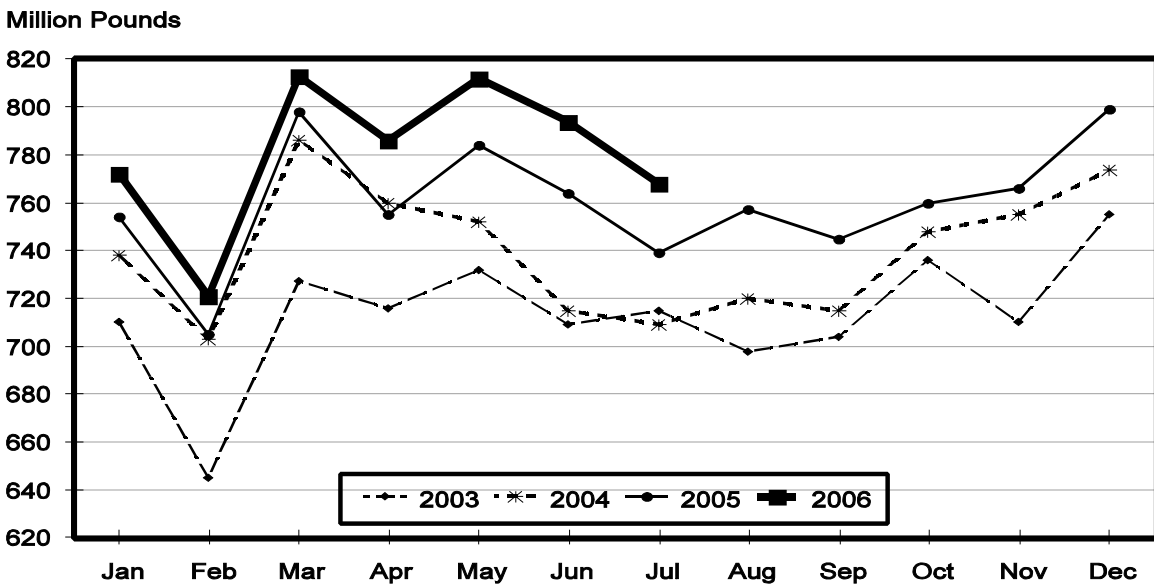
Total Cheese, Excluding Cottage Cheese: Production by State and United States, July 2005-2006

State	Jul 2005	Jun ¹ 2006	Jul 2006	Change From	
				Jul 2005	Jun 2006
	<i>1,000 Pounds</i>	<i>1,000 Pounds</i>	<i>1,000 Pounds</i>	<i>Percent</i>	<i>Percent</i>
CA	174,698	181,780	175,374	0.4	-3.5
ID	62,163	66,366	66,314	6.7	-0.1
IL	7,407	6,164	6,123	-17.3	-0.7
IA	12,676	13,356	12,651	-0.2	-5.3
MN	51,626	52,149	51,093	-1.0	-2.0
NY	48,593	53,865	52,011	7.0	-3.4
OH	15,647	17,045	16,293	4.1	-4.4
PA	32,747	31,616	31,566	-3.6	-0.2
SD	14,240	15,367	15,124	6.2	-1.6
UT	5,760	6,252	5,972	3.7	-4.5
WI	197,257	206,052	197,026	-0.1	-4.4
Oth Sts ²	116,658	143,925	138,402	18.6	-3.8
US	739,472	793,937	767,949	3.9	-3.3
N Atl	96,947	100,786	99,809	3.0	-1.0
S Atl	3,733	3,716	3,720	-0.3	0.1
E N Cen	232,567	243,869	232,816	0.1	-4.5
W N Cen	84,134	86,625	83,413	-0.9	-3.7
S Cen	8,367	9,281	10,062	20.3	8.4
West	313,724	349,660	338,129	7.8	-3.3

¹ Revised.

² States not shown when fewer than 3 plants reported or individual plant operations could be disclosed. Percent change shown only when comparable States are included in the calculation.

Total Cheese Production United States



American Cheese: Production by State and United States, July 2005-2006

State	Jul 2005	Jun ¹ 2006	Jul 2006	Change From	
				Jul 2005	Jun 2006
	<i>1,000 Pounds</i>	<i>1,000 Pounds</i>	<i>1,000 Pounds</i>	<i>Percent</i>	<i>Percent</i>
CA	69,107	67,877	65,764	-4.8	-3.1
ID	46,819	48,585	49,220	5.1	1.3
IA	9,747	10,582	9,902	1.6	-6.4
MN	49,449	48,554	47,476	-4.0	-2.2
OH	3,287	3,584	3,507	6.7	-2.1
OR	9,356	9,284	9,862	5.4	6.2
WI	73,983	70,014	68,800	-7.0	-1.7
Oth Sts ²	54,229	78,544	74,047	36.5	-5.7
US	315,977	337,024	328,578	4.0	-2.5
Atlantic	11,399	11,061	12,634	10.8	14.2
E N Cen	78,310	74,713	73,454	-6.2	-1.7
W N Cen	66,794	67,153	65,252	-2.3	-2.8
S Cen	3,168	3,908	3,862	21.9	-1.2
West	156,306	180,189	173,376	10.9	-3.8

¹ Revised.

² States not shown when fewer than 3 plants reported or individual plant operations could be disclosed. Percent change shown only when comparable States are included in the calculation.

Cheddar Cheese: Production by State and United States, July 2005-2006

State	Jul 2005	Jun ¹ 2006	Jul 2006	Change From	
				Jul 2005	Jun 2006
	<i>1,000 Pounds</i>	<i>1,000 Pounds</i>	<i>1,000 Pounds</i>	<i>Percent</i>	<i>Percent</i>
CA	41,135	40,958	40,345	-1.9	-1.5
ID	42,730	45,077	44,980	5.3	-0.2
MN	45,610	44,786	43,879	-3.8	-2.0
OH	2,204	2,634	2,636	19.6	0.1
WI	58,349	53,311	54,200	-7.1	1.7
Oth Sts ²	62,681	81,584	81,394	29.9	-0.2
US	252,709	268,350	267,434	5.8	-0.3
Atlantic	11,072	10,627	11,908	7.6	12.1
E N Cen	60,569	55,959	56,852	-6.1	1.6
W N Cen	57,633	57,938	56,586	-1.8	-2.3
S Cen	3,167	3,907	3,860	21.9	-1.2
West	120,268	139,919	138,228	14.9	-1.2

¹ Revised.

² States not shown when fewer than 3 plants reported or individual plant operations could be disclosed. Percent change shown only when comparable States are included in the calculation.

Italian Cheese, Total: Production by State and United States, July 2005-2006

State	Jul 2005	Jun ¹ 2006	Jul 2006	Change From	
				Jul 2005	Jun 2006
	<i>1,000 Pounds</i>	<i>1,000 Pounds</i>	<i>1,000 Pounds</i>	<i>Percent</i>	<i>Percent</i>
CA	89,348	96,124	93,969	5.2	-2.2
ID	10,541	11,131	10,608	0.6	-4.7
NY	25,292	29,424	29,401	16.2	-0.1
PA	22,272	21,039	21,635	-2.9	2.8
SD	7,368	7,831	7,709	4.6	-1.6
WI	86,203	95,776	91,691	6.4	-4.3
Oth Sts ²	62,030	64,689	63,291	2.0	-2.2
US ³	303,054	326,014	318,304	5.0	-2.4
Atlantic	58,489	61,575	61,905	5.8	0.5
E N Cen	99,074	111,143	105,410	6.4	-5.2
West	133,490	139,249	137,074	2.7	-1.6

¹ Revised.

² States not shown when fewer than 3 plants reported or individual plant operations could be disclosed. Percent change shown only when comparable States are included in the calculation.

³ Region totals may not add to U.S. when compiled regions could not be disclosed.

Mozzarella Cheese: Production by State and United States, July 2005-2006

State	Jul 2005	Jun ¹ 2006	Jul 2006	Change From	
				Jul 2005	Jun 2006
	<i>1,000 Pounds</i>	<i>1,000 Pounds</i>	<i>1,000 Pounds</i>	<i>Percent</i>	<i>Percent</i>
CA	78,452	85,260	82,583	5.3	-3.1
ID	9,241	9,434	9,128	-1.2	-3.2
NY	14,108	16,388	16,806	19.1	2.6
PA	18,913	18,335	18,979	0.3	3.5
WI	63,023	71,668	68,100	8.1	-5.0
Oth Sts ²	59,567	60,590	59,285	-0.5	-2.2
US ³	243,304	261,675	254,881	4.8	-2.6
Atlantic	40,122	42,455	43,044	7.3	1.4
E N Cen	74,160	84,838	79,919	7.8	-5.8
West	120,460	125,831	123,407	2.4	-1.9

¹ Revised.

² States not shown when fewer than 3 plants reported or individual plant operations could be disclosed. Percent change shown only when comparable States are included in the calculation.

³ Region totals may not add to U.S. when compiled regions could not be disclosed.

Butter: Production by State and United States, July 2005-2006

State	Jul 2005	Jun ¹ 2006	Jul 2006	Change From	
				Jul 2005	Jun 2006
	<i>1,000 Pounds</i>	<i>1,000 Pounds</i>	<i>1,000 Pounds</i>	<i>Percent</i>	<i>Percent</i>
CA	31,492	31,687	26,006	-17.4	-17.9
NY	1,295	1,158	1,268	-2.1	9.5
PA	5,228	6,044	4,926	-5.8	-18.5
WI	25,706	25,429	23,200	-9.7	-8.8
Oth Sts ²	32,208	36,461	37,325	15.9	2.4
US ³	95,929	100,779	92,725	-3.3	-8.0
N Atl	7,887	9,766	7,558	-4.2	-22.6
E N Cen	27,678	27,347	25,356	-8.4	-7.3
W N Cen	4,783	8,640	7,605	59.0	-12.0
West	47,259	47,922	43,697	-7.5	-8.8

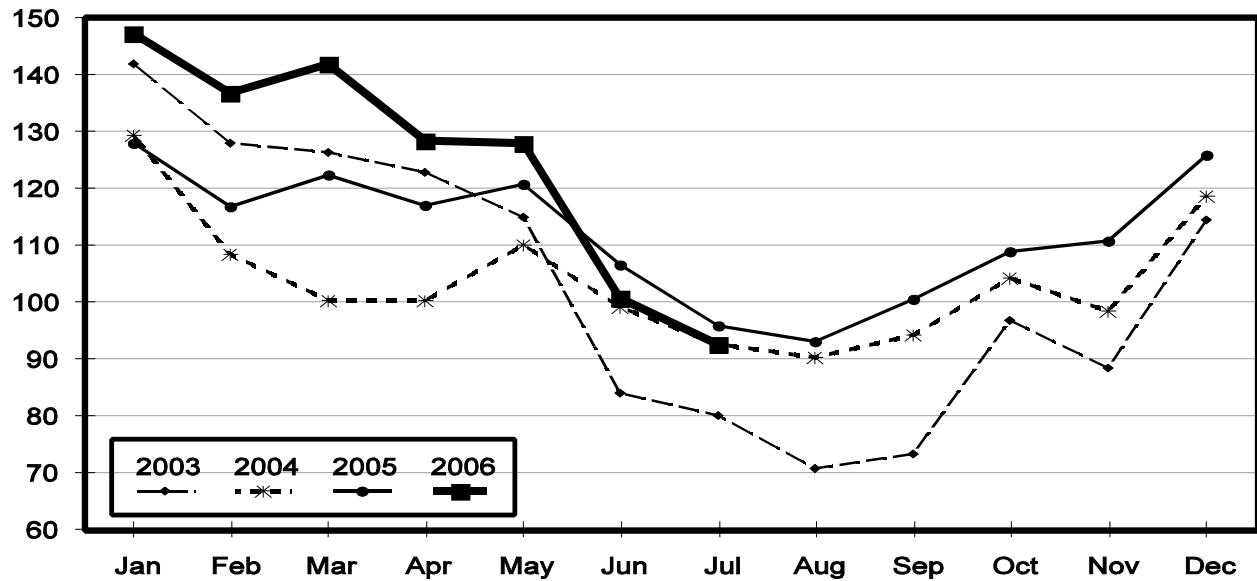
¹ Revised.

² States not shown when fewer than 3 plants reported or individual plant operations could be disclosed. Percent change shown only when comparable States are included in the calculation.

³ Region totals may not add to U.S. when compiled regions could not be disclosed.

Total Butter Production United States

Million Pounds



**Nonfat Dry Milk, Human: Production by State
and United States, July 2005-2006**

State	Jul 2005	Jun ¹ 2006	Jul 2006	Change From	
				Jul 2005	Jun 2006
	<i>1,000 Pounds</i>	<i>1,000 Pounds</i>	<i>1,000 Pounds</i>	<i>Percent</i>	<i>Percent</i>
CA	38,760	51,739	35,356	-8.8	-31.7
PA	11,696	11,681	7,915	-32.3	-32.2
Oth Sts ²	58,409	53,629	44,969	-23.0	-16.1
US	108,865	117,049	88,240	-18.9	-24.6
Atlantic	20,834	22,622	15,705	-24.6	-30.6
E N Cen	6,004	7,095	6,527	8.7	-8.0
W N Cen	6,130	5,397	5,074	-17.2	-6.0
S Cen	8,376	3,721	2,598	-69.0	-30.2
West	67,521	78,214	58,336	-13.6	-25.4

¹ Revised.

² States not shown when fewer than 3 plants reported or individual plant operations could be disclosed. Percent change shown only when comparable States are included in the calculation.

**Dry Whey, Human: Production by State
and United States, July 2005-2006**

State	Jul 2005	Jun ¹ 2006	Jul 2006	Change From	
				Jul 2005	Jun 2006
	<i>1,000 Pounds</i>	<i>1,000 Pounds</i>	<i>1,000 Pounds</i>	<i>Percent</i>	<i>Percent</i>
CA	9,968	8,366	8,582	-13.9	2.6
MN	3,684	4,337	4,081	10.8	-5.9
NY	10,186	11,603	12,201	19.8	5.2
WI	24,439	25,245	25,300	3.5	0.2
Oth Sts ²	32,617	35,651	34,764	6.6	-2.5
US	80,894	85,202	84,928	5.0	-0.3
Atlantic	18,574	20,231	20,595	10.9	1.8
Central	37,578	39,985	39,322	4.6	-1.7
West	24,742	24,986	25,011	1.1	0.1

¹ Revised.

² States not shown when fewer than 3 plants reported or individual plant operations could be disclosed. Percent change shown only when comparable States are included in the calculation.

Ice Cream, Hard: Production by State and United States, July 2005-2006

State	Jul 2005	Jun ¹ 2006	Jul 2006	Change From	
				Jul 2005	Jun 2006
	<i>1,000 Gallons</i>	<i>1,000 Gallons</i>	<i>1,000 Gallons</i>	<i>Percent</i>	<i>Percent</i>
CA	12,310	14,217	12,580	2.2	-11.5
FL	1,807	2,050	1,910	5.7	-6.8
IN	8,920	7,499	8,229	-7.7	9.7
MD	1,806	1,707	1,746	-3.3	2.3
MA	5,883	4,156	5,145	-12.5	23.8
MN	4,019	4,529	3,945	-1.8	-12.9
MO	3,074	2,430	2,813	-8.5	15.8
NY	3,131	3,023	2,051	-34.5	-32.2
OH	2,253	2,699	2,340	3.9	-13.3
OR	1,261	1,024	1,318	4.5	28.7
PA	4,115	3,336	3,769	-8.4	13.0
TN	1,202	1,715	1,454	21.0	-15.2
TX	5,068	6,502	5,407	6.7	-16.8
UT	2,441	2,959	2,618	7.3	-11.5
Oth Sts ²	29,764	30,052	30,121	1.2	0.2
US	87,054	87,898	85,446	-1.8	-2.8
N Atl	17,409	13,865	14,537	-16.5	4.8
S Atl	6,906	6,706	6,880	-0.4	2.6
E N Cen	16,981	16,215	16,753	-1.3	3.3
W N Cen	15,396	16,157	15,190	-1.3	-6.0
S Cen	10,348	13,190	11,512	11.2	-12.7
West	20,014	21,765	20,574	2.8	-5.5

¹ Revised.

² States not shown when fewer than 3 plants reported or individual plant operations could be disclosed. Percent change shown only when comparable States are included in the calculation.

**Canned Milk and Dry Milk Products: Manufacturers' Shipments,
and Stocks, July, 2005-2006**

Product	Jul 2005	Jun 2006 ¹	Jul 2006	Change From	
				Jul 2005	Jun 2006
	Manufacturers' Shipments ²				
	<i>1,000 Pounds</i>	<i>1,000 Pounds</i>	<i>1,000 Pounds</i>	<i>Percent</i>	<i>Percent</i>
Nonfat Dry Milk, Human	81,222	140,455	106,109	30.6	-24.5
	Manufacturers' Stocks End-of-Month ³				
	<i>1,000 Pounds</i>	<i>1,000 Pounds</i>	<i>1,000 Pounds</i>	<i>Percent</i>	<i>Percent</i>
Canned Evaporated and Condensed Whole Milk	78,204	71,111	86,572	10.7	21.7
Nonfat Dry Milk, Human	121,810	111,079	83,589	-31.4	-24.7
Dry Buttermilk, Total	9,023	10,530	4,829	-46.5	-54.1

¹ Revised.

² For dry products, shipments of bulk goods only.

³ Stocks held by manufacturers at all points and in transit.

Procedures and Reliability: Estimates included in this report are based on data provided each month by manufacturers of these products. In 32 States, the State Departments of Agriculture assist in collection of data, which eliminates duplicate reporting and reduces respondent burden. Data are collected by mail, personal and telephone interviews following the close of each month. There were 1,081 manufacturers that made one or more products in 2005. Each month, reports are generally received from all dairy plants in States with small numbers of plants. In States with large numbers of plants, survey procedures are designed to obtain monthly reports from all large plants and from a sample of small plants. Monthly estimates are based upon returns from about 70 percent of the plants which account for 70 to 90 percent of the total production of major dairy products.

Revision Policy: Monthly estimates are subject to revision the month following the preliminary estimates. Annual estimates are published in the "**Dairy Products**" report published each April which includes any revisions made to current and previous year. An attempt is made to get information from all plants for preparing these estimates

Information Contacts

Listed below are the commodity specialists in the Livestock Branch of the National Agricultural Statistics Service to contact for additional information.

Dan Kerestes, Chief, Livestock Branch	(202) 720-3570
William Weaver, Head, Livestock Section	(202) 720-3570
Bruce Boess - Hogs and Pigs	(202) 720-3106
Shawn Clark - Dairy Products	(202) 690-3236
Jason Hardegree - Milk Production and Milk Cows	(202) 720-3278
Scott Hollis - Sheep & Lambs, Goats	(202) 720-4751
Mike Miller - Cattle, Cattle on Feed	(202) 720-3040
Katy Paulsen - Livestock Slaughter	(515) 284-4340
Charmaine Wilson - Dairy Products Prices	(202) 690-2168

ACCESS TO REPORTS!!

For your convenience, there are several ways to obtain NASS reports, data products, and services:

INTERNET ACCESS

All NASS reports are available free of charge on the worldwide Internet. For access, connect to the Internet and go to the NASS Home Page at: www.nass.usda.gov.

E-MAIL SUBSCRIPTION

All NASS reports are available by subscription free of charge direct to your e-mail address. Starting with the NASS Home Page at www.nass.usda.gov, under the right navigation, *Receive reports by Email*, click on **National** or **State**. Follow the instructions on the screen.

PRINTED REPORTS OR DATA PRODUCTS

CALL OUR TOLL-FREE ORDER DESK: 800-999-6779 (U.S. and Canada)
Other areas, please call 703-605-6220 FAX: 703-605-6900
(Visa, MasterCard, check, or money order acceptable for payment.)

ASSISTANCE

For **assistance** with general agricultural statistics or further information about NASS or its products or services, contact the **Agricultural Statistics Hotline** at **800-727-9540**, 7:30 a.m. to 4:00 p.m. ET, or e-mail: nass@nass.usda.gov.

The U.S. Department of Agriculture (USDA) prohibits discrimination in all its programs and activities on the basis of race, color, national origin, age, disability, and where applicable, sex, marital status, familial status, parental status, religion, sexual orientation, genetic information, political beliefs, reprisal, or because all or part of an individual's income is derived from any public assistance program. (Not all prohibited bases apply to all programs.) Persons with disabilities who require alternative means for communication of program information (Braille, large print, audiotape, etc.) should contact USDA's TARGET Center at (202) 720-2600 (voice and TDD).

To file a complaint of discrimination, write to USDA, Director, Office of Civil Rights, 1400 Independence Avenue, S.W., Washington, D.C. 20250-9410, or call (800) 795-3272 (voice) or (202) 720-6382 (TDD). USDA is an equal opportunity provider and employer.