



NASS

FACT FINDERS FOR AGRICULTURE
UNITED STATES DEPARTMENT OF AGRICULTURE

Washington, D.C.

Dairy Products

Released October 4, 2006, by the National Agricultural Statistics Service (NASS), Agricultural Statistics Board, U.S. Department of Agriculture. For information on *Dairy Products* call Shawn Clark at (202) 690-3236, office hours 7:30 a.m. to 4:00 p.m. ET.

August 2006 Highlights

Total cheese output (excluding cottage cheese) was 787 million pounds, 3.9 percent above August 2005 and 2.5 percent above July 2006.

Italian type cheese production totaled 331 million pounds, 6.4 percent above August 2005 and 4.1 percent above July 2006.

American type cheese production totaled 318 million pounds, 2.0 percent above August 2005 but 3.0 percent below July 2006.

Butter production was 89.2 million pounds, 4.3 percent below August 2005 and 5.7 percent below July 2006.

Frozen dessert: (comparisons with August 2005)

Ice cream, Regular (hard) --- 84.5 million gallons, down 5.2 percent.

Ice cream, Lowfat (total) --- 37.6 million gallons, up 5.5 percent.

Ice cream, Nonfat (hard) --- 1.35 million gallons, down 29.2 percent.

Sherbet (hard) --- 4.72 million gallons, down 16.1 percent.

Frozen Yogurt (total) --- 6.87 million gallons, up 11.8 percent.

Nonfat dry milk for human food: (compared with August 2005) --- 74.4 million pounds, down 14.2 percent.

Dry whey products: (comparisons with August 2005)

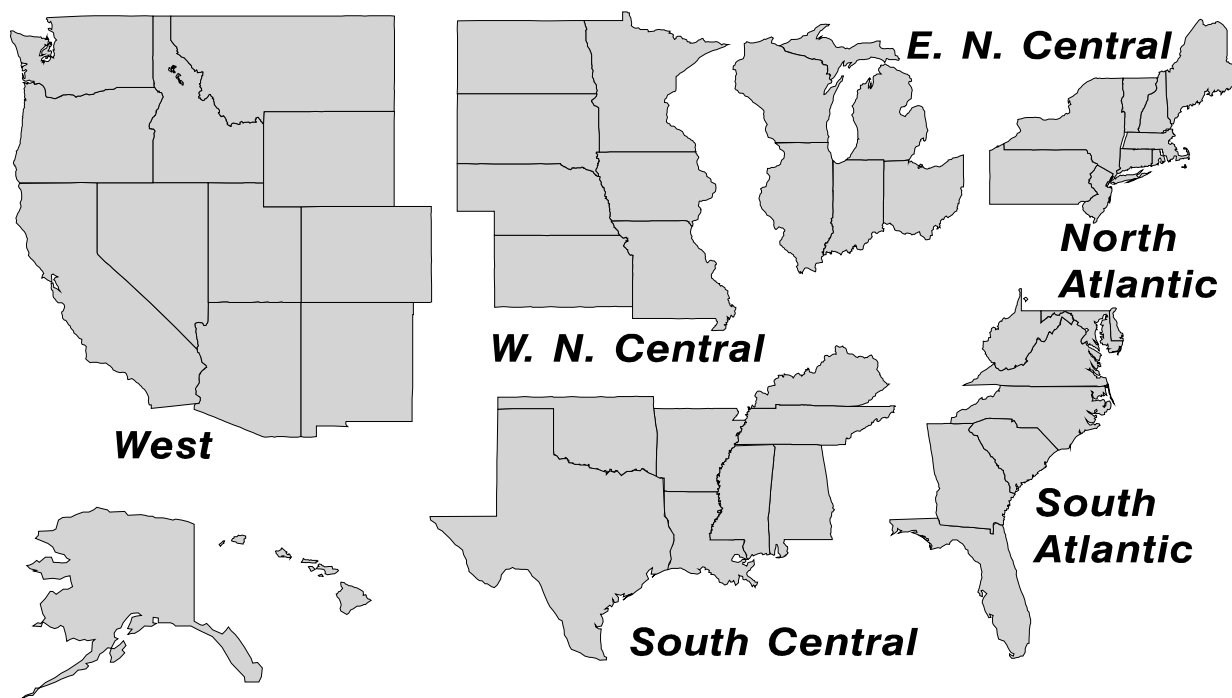
Dry whey, human --- 83.5 million pounds, up 4.0 percent.

Dry whey, animal --- 5.49 million pounds, down 23.5 percent.

Dry whey, total --- 89.0 million pounds, up 1.8 percent.

U. S. Geographic Regions Dairy Products

If we are not able to publish a region for confidentiality reasons, it will be combined with other regions when possible. For example, if North Atlantic can not be published, then it will be combined with South Atlantic to publish Atlantic. The West North Central and East North Central will be combined, if necessary, to form North Central. In the event that neither could be published, they may be combined with South Central to publish Central. Some tables will have only limited regions shown, therefore the regions may not add to the United States total.



Contents

Page

Dairy Products: Production by Product, United States	1
Whey and Modified Whey Products: Production, Stocks, and Prices, United States	2
Dairy Products: Production by Product and Month, United States	3
Select Commodities by State and United States	10
Canned Milk and Dry Milk Products: Manufacturer's Shipments, Stocks, and Selling Prices	15
Procedures and Reliability	16
Information Contacts	16

**Dairy Products: Production by Product,
United States, August, 2005-2006**

Product	Aug 2005	Jul 2006 ¹	Aug 2006	Change From	
				Aug 2005	Jul 2006
	<i>1,000 Pounds</i>	<i>1,000 Pounds</i>	<i>1,000 Pounds</i>	<i>Percent</i>	<i>Percent</i>
Butter	93,194	94,567	89,202	-4.3	-5.7
Cheese					
American Types ²	312,028	328,226	318,249	2.0	-3.0
Cheddar	245,144	267,088	252,662	3.1	-5.4
Swiss	24,824	24,820	24,444	-1.5	-1.5
Brick and Muenster	8,809	8,853	9,962	13.1	12.5
Cream and Neufchatel	64,594	51,647	66,139	2.4	28.1
Hispanic	14,169	14,200	15,275	7.8	7.6
Mozzarella	244,631	254,757	262,608	7.3	3.1
Other Italian Types	66,887	63,440	68,704	2.7	8.3
Total Italian Types	311,518	318,197	331,312	6.4	4.1
All Other Types	21,460	21,493	21,576	0.5	0.4
Total	757,402	767,436	786,957	3.9	2.5
Cottage Cheese, Curd ³	40,565	36,267	42,643	5.1	17.6
Cottage Cheese, Cream ⁴	33,782	29,114	34,858	3.2	19.7
Cottage Cheese, Lowfat ⁵	35,568	32,960	37,388	5.1	13.4
Canned Evaporated and Condensed Whole Milk	42,773	39,450	43,784	2.4	11.0
Dry Whole Milk	1,703	2,953	2,880	69.1	-2.5
Nonfat Dry Milk, Human Skim Milk Powders ⁶	86,679	88,227	74,404	-14.2	-15.7
Dry Skim Milk, Animal	34,938	29,344	24,088	-31.1	-17.9
Dry Skim Milk, Animal	516	607	441	-14.5	-27.3
Dry Buttermilk	3,511	4,040	3,399	-3.2	-15.9
Sour Cream	90,935	84,064	96,829	6.5	15.2
Yogurt, Plain & Flavored	265,359	255,765	283,837	7.0	11.0
	<i>1,000 Gallons</i>	<i>1,000 Gallons</i>	<i>1,000 Gallons</i>	<i>Percent</i>	<i>Percent</i>
Frozen Products					
Ice Cream, Regular, Hard	89,142	85,374	84,542	-5.2	-1.0
Ice Cream, Lowfat, Hard	10,522	11,092	10,551	0.3	-4.9
Ice Cream, Lowfat, Soft	25,070	25,827	26,999	7.7	4.5
Ice Cream, Lowfat, Total	35,592	36,919	37,550	5.5	1.7
Ice Cream, Nonfat, Hard	1,910	1,349	1,353	-29.2	0.3
Sherbet, Hard	5,632	4,898	4,724	-16.1	-3.6
Water and Juice Ices	6,234	6,678	5,678	-8.9	-15.0
Frozen Yogurt, Total	6,142	6,240	6,867	11.8	10.0
Regular & Lowfat, Hard	1,785	1,555	1,870	4.8	20.3
Nonfat, Hard	1,021	1,060	1,195	17.0	12.7
Other Frozen Dairy Products	748	1,043	990	32.4	-5.1
Mix for Frozen Products					
Ice Cream Mix	48,731	47,744	47,172	-3.2	-1.2
Ice Cream, Lowfat, Mix	21,073	21,303	21,720	3.1	2.0
Ice Cream, Nonfat, Mix	1,253	820	839	-33.0	2.3
Sherbet Mix	3,883	3,534	3,347	-13.8	-5.3
Yogurt Mix	3,779	3,782	4,162	10.1	10.0

¹ Revised.

² Includes Cheddar, Colby, Monterey, and Jack.

³ Mostly used for processing into cream or lowfat cottage cheese.

⁴ Fat content 4 percent or more.

⁵ Fat content less than 4 percent.

⁶ Includes protein standardized and blends.

**Whey and Modified Whey Products: Production, Stocks,
and Prices, United States, August, 2005-2006**

Product	Aug 2005	Jul 2006 ¹	Aug 2006	Change From	
				Aug 2005	Jul 2006
Production					
	<i>1,000 Pounds</i>	<i>1,000 Pounds</i>	<i>1,000 Pounds</i>	<i>Percent</i>	<i>Percent</i>
Condensed Whey, Solids Content ²					
Sweet-Type, Human	6,167	8,564	9,149	48.4	6.8
Dry Whey Products					
Dry Whey, Human	80,264	84,911	83,502	4.0	-1.7
Dry Whey, Animal	7,174	5,437	5,487	-23.5	0.9
Dry Whey, Total	87,438	90,348	88,989	1.8	-1.5
Reduced Lactose and Minerals					
Human Food	3,755	3,376	2,980	-20.6	-11.7
Animal Feed	3,936	3,778	3,759	-4.5	-0.5
Lactose, Human and Animal	53,523	55,139	58,818	9.9	6.7
Whey					
Protein Concentrate					
Human ³	25,883	29,641	28,857	11.5	-2.6
Animal ³	4,406	4,258	4,231	-4.0	-0.6
Total ³	30,289	33,899	33,088	9.2	-2.4
25.0-49.9 Percent ⁴	22,671	24,300	23,280	2.7	-4.2
50.0-89.9 Percent ⁴	7,618	9,599	9,808	28.7	2.2
Protein Isolates ⁵	8,827	2,560	2,400	-72.8	-6.3
Manufacturers' Stocks End-of-Month ⁶					
	<i>1,000 Pounds</i>	<i>1,000 Pounds</i>	<i>1,000 Pounds</i>	<i>Percent</i>	<i>Percent</i>
Dry Whey Products					
Dry Whey, Human	33,555	38,527	33,359	-0.6	-13.4
Dry Whey, Animal	3,218	2,898	2,542	-21.0	-12.3
Dry Whey, Total	36,773	41,425	35,901	-2.4	-13.3
Reduced Lactose and Minerals					
Human and Animal ⁷	5,342	4,492	3,748	-29.8	-16.6
Lactose, Human and Animal	48,159	38,957	37,900	-21.3	-2.7
Whey					
Protein Concentrate					
Human ³	23,574	28,319	24,456	3.7	-13.6
Animal ³	2,386	2,492	2,552	7.0	2.4
Total ³	25,960	30,811	27,008	4.0	-12.3
25.0-49.9 Percent ⁴	16,733	20,001	18,433	10.2	-7.8
50.0-89.9 Percent ⁴	9,227	10,810	8,575	-7.1	-20.7
Manufacturers' Selling Price ⁸					
	<i>Cents per Pound</i>	<i>Cents per Pound</i>	<i>Cents per Pound</i>	<i>Cents Change</i>	<i>Cents Change</i>
Dry Whey, Animal	27.6	23.6	24.0	-3.6	0.4

¹ Revised.

² Final marketable product only. Does not include quantity used or shipped to another plant for further processing into dry whey or modified whey products. Does not include sweet-type, animal whey.

³ Whey Protein Concentrate, 25.0 to 89.9 percent.

⁴ Whey Protein Concentrate, Human and Animal.

⁵ Whey Protein Isolate, 90.0 percent or greater.

⁶ Stocks held by manufacturers at all points and in transit.

⁷ Reduced lactose and minerals stocks combined to avoid disclosure of individual operations.

⁸ Prices for bulk goods, f.o.b. plant. Average monthly prices reported by firms.

**Dairy Products: Production by Product and Month,
United States, 2005-2006 ¹**

Product and Month	By Month			Cumulative		
	2005	2006	Change From 2005	2005	2006	Change From 2005
	<i>1,000 Pounds</i>	<i>1,000 Pounds</i>	<i>Percent</i>	<i>1,000 Pounds</i>	<i>1,000 Pounds</i>	<i>Percent</i>
Total Cheese						
Jan	753,967	772,337	2.4	753,967	772,337	2.4
Feb	704,633	720,978	2.3	1,458,600	1,493,315	2.4
Mar	797,511	812,634	1.9	2,256,111	2,305,949	2.2
Apr	754,849	786,477	4.2	3,010,960	3,092,426	2.7
May	783,943	811,591	3.5	3,794,903	3,904,017	2.9
Jun	764,468	793,937	3.9	4,559,371	4,697,954	3.0
Jul	739,472	767,436	3.8	5,298,843	5,465,390	3.1
Aug	757,402	786,957	3.9	6,056,245	6,252,347	3.2
Sep	745,485			6,801,730		
Oct	760,407			7,562,137		
Nov	766,061			8,328,198		
Dec	798,909			9,127,107		
American Cheese						
Jan	322,332	324,545	0.7	322,332	324,545	0.7
Feb	292,238	304,376	4.2	614,570	628,921	2.3
Mar	331,468	338,383	2.1	946,038	967,304	2.2
Apr	327,575	338,715	3.4	1,273,613	1,306,019	2.5
May	332,501	346,512	4.2	1,606,114	1,652,531	2.9
Jun	321,389	337,024	4.9	1,927,503	1,989,555	3.2
Jul	315,977	328,226	3.9	2,243,480	2,317,781	3.3
Aug	312,028	318,249	2.0	2,555,508	2,636,030	3.2
Sep	301,791			2,857,299		
Oct	312,321			3,169,620		
Nov	313,195			3,482,815		
Dec	330,135			3,812,950		
Cheddar Cheese						
Jan	261,868	265,809	1.5	261,868	265,809	1.5
Feb	237,987	246,344	3.5	499,855	512,153	2.5
Mar	268,668	270,553	0.7	768,523	782,706	1.8
Apr	262,787	273,664	4.1	1,031,310	1,056,370	2.4
May	265,569	275,298	3.7	1,296,879	1,331,668	2.7
Jun	258,211	268,350	3.9	1,555,090	1,600,018	2.9
Jul	252,709	267,088	5.7	1,807,799	1,867,106	3.3
Aug	245,144	252,662	3.1	2,052,943	2,119,768	3.3
Sep	239,629			2,292,572		
Oct	248,910			2,541,482		
Nov	248,464			2,789,946		
Dec	262,469			3,052,415		

See footnote(s) at end of table.

--continued

**Dairy Products: Production by Product and Month,
United States, 2005-2006 ¹ (continued)**

Product and Month	By Month			Cumulative		
	2005	2006	Change From 2005	2005	2006	Change From 2005
	<i>1,000 Pounds</i>	<i>1,000 Pounds</i>	<i>Percent</i>	<i>1,000 Pounds</i>	<i>1,000 Pounds</i>	<i>Percent</i>
Italian Cheese						
Jan	316,288	328,315	3.8	316,288	328,315	3.8
Feb	299,673	307,623	2.7	615,961	635,938	3.2
Mar	338,682	346,179	2.2	954,643	982,117	2.9
Apr	310,719	328,588	5.8	1,265,362	1,310,705	3.6
May	327,196	335,577	2.6	1,592,558	1,646,282	3.4
Jun	319,049	326,014	2.2	1,911,607	1,972,296	3.2
Jul	303,054	318,197	5.0	2,214,661	2,290,493	3.4
Aug	311,518	331,312	6.4	2,526,179	2,621,805	3.8
Sep	310,339			2,836,518		
Oct	311,901			3,148,419		
Nov	320,304			3,468,723		
Dec	336,007			3,804,730		
Mozzarella						
Jan	250,595	259,574	3.6	250,595	259,574	3.6
Feb	239,382	242,804	1.4	489,977	502,378	2.5
Mar	269,830	273,870	1.5	759,807	776,248	2.2
Apr	247,184	261,653	5.9	1,006,991	1,037,901	3.1
May	262,238	267,474	2.0	1,269,229	1,305,375	2.8
Jun	255,540	261,675	2.4	1,524,769	1,567,050	2.8
Jul	243,304	254,757	4.7	1,768,073	1,821,807	3.0
Aug	244,631	262,608	7.3	2,012,704	2,084,415	3.6
Sep	243,687			2,256,391		
Oct	243,671			2,500,062		
Nov	252,933			2,752,995		
Dec	267,803			3,020,798		
Other Italian						
Jan	65,693	68,741	4.6	65,693	68,741	4.6
Feb	60,291	64,819	7.5	125,984	133,560	6.0
Mar	68,852	72,309	5.0	194,836	205,869	5.7
Apr	63,535	66,935	5.4	258,371	272,804	5.6
May	64,958	68,103	4.8	323,329	340,907	5.4
Jun	63,509	64,339	1.3	386,838	405,246	4.8
Jul	59,750	63,440	6.2	446,588	468,686	4.9
Aug	66,887	68,704	2.7	513,475	537,390	4.7
Sep	66,652			580,127		
Oct	68,230			648,357		
Nov	67,371			715,728		
Dec	68,204			783,932		

See footnote(s) at end of table.

--continued

**Dairy Products: Production by Product and Month,
United States, 2005-2006 ¹ (continued)**

Product and Month	By Month			Cumulative		
	2005	2006	Change From 2005	2005	2006	Change From 2005
	<i>1,000 Pounds</i>	<i>1,000 Pounds</i>	<i>Percent</i>	<i>1,000 Pounds</i>	<i>1,000 Pounds</i>	<i>Percent</i>
Butter						
Jan	128,020	147,251	15.0	128,020	147,251	15.0
Feb	116,927	136,953	17.1	244,947	284,204	16.0
Mar	122,402	141,993	16.0	367,349	426,197	16.0
Apr	117,061	128,457	9.7	484,410	554,654	14.5
May	120,715	128,126	6.1	605,125	682,780	12.8
Jun	106,559	100,779	-5.4	711,684	783,559	10.1
Jul	95,929	94,567	-1.4	807,613	878,126	8.7
Aug	93,194	89,202	-4.3	900,807	967,328	7.4
Sep	100,647			1,001,454		
Oct	108,915			1,110,369		
Nov	110,905			1,221,274		
Dec	125,953			1,347,227		
Nonfat Dry Milk, Human						
Jan	93,261	107,254	15.0	93,261	107,254	15.0
Feb	97,275	117,466	20.8	190,536	224,720	17.9
Mar	109,299	128,269	17.4	299,835	352,989	17.7
Apr	104,876	129,225	23.2	404,711	482,214	19.2
May	124,329	132,262	6.4	529,040	614,476	16.1
Jun	124,206	117,049	-5.8	653,246	731,525	12.0
Jul	108,865	88,227	-19.0	762,111	819,752	7.6
Aug	86,679	74,404	-14.2	848,790	894,156	5.3
Sep	70,954			919,744		
Oct	73,554			993,298		
Nov	89,095			1,082,393		
Dec	103,711			1,186,104		
Total Dry Whey ²						
Jan	85,936	88,243	2.7	85,936	88,243	2.7
Feb	79,665	89,713	12.6	165,601	177,956	7.5
Mar	91,775	101,239	10.3	257,376	279,195	8.5
Apr	91,260	96,339	5.6	348,636	375,534	7.7
May	94,083	97,119	3.2	442,719	472,653	6.8
Jun	89,357	90,168	0.9	532,076	562,821	5.8
Jul	89,143	90,348	1.4	621,219	653,169	5.1
Aug	87,438	88,989	1.8	708,657	742,158	4.7
Sep	83,948			792,605		
Oct	82,186			874,791		
Nov	84,844			959,635		
Dec	86,187			1,045,822		

See footnote(s) at end of table.

--continued

**Dairy Products: Production by Product and Month,
United States, 2005-2006 ¹ (continued)**

Product and Month	By Month			Cumulative		
	2005	2006	Change From 2005	2005	2006	Change From 2005
	<i>1,000 Pounds</i>	<i>1,000 Pounds</i>	<i>Percent</i>	<i>1,000 Pounds</i>	<i>1,000 Pounds</i>	<i>Percent</i>
Cream Cottage Cheese						
Jan	29,553	27,785	-6.0	29,553	27,785	-6.0
Feb	27,833	27,193	-2.3	57,386	54,978	-4.2
Mar	32,682	32,115	-1.7	90,068	87,093	-3.3
Apr	30,623	28,580	-6.7	120,691	115,673	-4.2
May	31,463	31,383	-0.3	152,154	147,056	-3.4
Jun	32,266	31,096	-3.6	184,420	178,152	-3.4
Jul	31,938	29,114	-8.8	216,358	207,266	-4.2
Aug	33,782	34,858	3.2	250,140	242,124	-3.2
Sep	33,011			283,151		
Oct	30,269			313,420		
Nov	28,679			342,099		
Dec	26,058			368,157		
Lowfat Cottage Cheese						
Jan	30,843	31,617	2.5	30,843	31,617	2.5
Feb	32,060	30,818	-3.9	62,903	62,435	-0.7
Mar	35,064	35,940	2.5	97,967	98,375	0.4
Apr	32,706	31,668	-3.2	130,673	130,043	-0.5
May	34,904	35,108	0.6	165,577	165,151	-0.3
Jun	35,362	33,458	-5.4	200,939	198,609	-1.2
Jul	32,436	32,960	1.6	233,375	231,569	-0.8
Aug	35,568	37,388	5.1	268,943	268,957	
Sep	34,506			303,449		
Oct	32,642			336,091		
Nov	31,406			367,497		
Dec	28,574			396,071		
	<i>1,000 Gallons</i>	<i>1,000 Gallons</i>	<i>Percent</i>	<i>1,000 Gallons</i>	<i>1,000 Gallons</i>	<i>Percent</i>
Ice Cream, Regular, Hard						
Jan	62,103	61,826	-0.4	62,103	61,826	-0.4
Feb	65,827	62,916	-4.4	127,930	124,742	-2.5
Mar	78,753	77,869	-1.1	206,683	202,611	-2.0
Apr	78,091	77,408	-0.9	284,774	280,019	-1.7
May	78,375	82,128	4.8	363,149	362,147	-0.3
Jun	91,190	87,898	-3.6	454,339	450,045	-0.9
Jul	87,054	85,374	-1.9	541,393	535,419	-1.1
Aug	89,142	84,542	-5.2	630,535	619,961	-1.7
Sep	72,359			702,894		
Oct	69,862			772,756		
Nov	61,133			833,889		
Dec	54,854			888,743		

See footnote(s) at end of table.

--continued

**Dairy Products: Production by Product and Month,
United States, 2005-2006 ¹ (continued)**

Product and Month	By Month			Cumulative		
	2005	2006	Change From 2005	2005	2006	Change From 2005
	<i>1,000 Gallons</i>	<i>1,000 Gallons</i>	<i>Percent</i>	<i>1,000 Gallons</i>	<i>1,000 Gallons</i>	<i>Percent</i>
Ice Cream, Lowfat						
Jan	24,199	25,444	5.1	24,199	25,444	5.1
Feb	26,181	24,134	-7.8	50,380	49,578	-1.6
Mar	32,927	31,475	-4.4	83,307	81,053	-2.7
Apr	33,192	32,054	-3.4	116,499	113,107	-2.9
May	33,123	37,226	12.4	149,622	150,333	0.5
Jun	38,572	41,999	8.9	188,194	192,332	2.2
Jul	36,928	36,919		225,122	229,251	1.8
Aug	35,592	37,550	5.5	260,714	266,801	2.3
Sep	30,745			291,459		
Oct	27,013			318,472		
Nov	23,770			342,242		
Dec	21,726			363,968		
Ice Cream, NF, Hard						
Jan	1,205	1,330	10.4	1,205	1,330	10.4
Feb	1,715	1,254	-26.9	2,920	2,584	-11.5
Mar	1,686	1,607	-4.7	4,606	4,191	-9.0
Apr	1,682	1,324	-21.3	6,288	5,515	-12.3
May	1,730	1,486	-14.1	8,018	7,001	-12.7
Jun	1,923	1,402	-27.1	9,941	8,403	-15.5
Jul	2,188	1,349	-38.3	12,129	9,752	-19.6
Aug	1,910	1,353	-29.2	14,039	11,105	-20.9
Sep	1,611			15,650		
Oct	1,538			17,188		
Nov	1,319			18,507		
Dec	1,153			19,660		
Sherbet, Hard						
Jan	3,838	3,893	1.4	3,838	3,893	1.4
Feb	4,036	4,173	3.4	7,874	8,066	2.4
Mar	4,924	4,582	-6.9	12,798	12,648	-1.2
Apr	5,111	4,557	-10.8	17,909	17,205	-3.9
May	4,934	4,791	-2.9	22,843	21,996	-3.7
Jun	5,825	5,210	-10.6	28,668	27,206	-5.1
Jul	5,425	4,898	-9.7	34,093	32,104	-5.8
Aug	5,632	4,724	-16.1	39,725	36,828	-7.3
Sep	4,953			44,678		
Oct	3,724			48,402		
Nov	3,442			51,844		
Dec	3,436			55,280		

See footnote(s) at end of table.

--continued

**Dairy Products: Production by Product and Month,
United States, 2005-2006 ¹ (continued)**

Product and Month	By Month			Cumulative		
	2005	2006	Change From 2005	2005	2006	Change From 2005
	<i>1,000 Pounds</i>	<i>1,000 Pounds</i>	<i>Percent</i>	<i>1,000 Pounds</i>	<i>1,000 Pounds</i>	<i>Percent</i>
Sour Cream						
Jan	76,976	81,288	5.6	76,976	81,288	5.6
Feb	73,791	76,832	4.1	150,767	158,120	4.9
Mar	87,637	89,000	1.6	238,404	247,120	3.7
Apr	72,323	79,298	9.6	310,727	326,418	5.0
May	86,250	91,426	6.0	396,977	417,844	5.3
Jun	85,798	89,599	4.4	482,775	507,443	5.1
Jul	79,324	84,064	6.0	562,099	591,507	5.2
Aug	90,935	96,829	6.5	653,034	688,336	5.4
Sep	79,208			732,242		
Oct	90,019			822,261		
Nov	108,466			930,727		
Dec	99,090			1,029,817		

See footnote(s) at end of table.

--continued

**Dairy Products: Production by Product and Month,
United States, 2005-2006 ¹ (continued)**

Product and Month	By Month			Cumulative		
	2005	2006	Change From 2005	2005	2006	Change From 2005
	<i>1,000 Pounds</i>	<i>1,000 Pounds</i>	<i>Percent</i>	<i>1,000 Pounds</i>	<i>1,000 Pounds</i>	<i>Percent</i>
Yogurt						
Jan	224,187	252,353	12.6	224,187	252,353	12.6
Feb	236,193	238,108	0.8	460,380	490,461	6.5
Mar	275,949	280,577	1.7	736,329	771,038	4.7
Apr	247,409	254,096	2.7	983,738	1,025,134	4.2
May	264,459	267,283	1.1	1,248,197	1,292,417	3.5
Jun	263,178	272,551	3.6	1,511,375	1,564,968	3.5
Jul	244,608	255,765	4.6	1,755,983	1,820,733	3.7
Aug	265,359	283,837	7.0	2,021,342	2,104,570	4.1
Sep	273,643			2,294,985		
Oct	249,329			2,544,314		
Nov	219,567			2,763,881		
Dec	225,908			2,989,789		

See footnote(s) at end of table.

--continued

**Dairy Products: Production by Product and Month,
United States, 2005-2006 ¹ (continued)**

Product and Month	By Month			Cumulative		
	2005	2006	Change From 2005	2005	2006	Change From 2005
	<i>1,000 Gallons</i>	<i>1,000 Gallons</i>	<i>Percent</i>	<i>1,000 Gallons</i>	<i>1,000 Gallons</i>	<i>Percent</i>
Frozen Yogurt						
Jan	4,353	4,131	-5.1	4,353	4,131	-5.1
Feb	4,910	4,524	-7.9	9,263	8,655	-6.6
Mar	5,942	6,044	1.7	15,205	14,699	-3.3
Apr	5,737	5,960	3.9	20,942	20,659	-1.4
May	6,239	6,663	6.8	27,181	27,322	0.5
Jun	6,412	6,882	7.3	33,593	34,204	1.8
Jul	5,867	6,240	6.4	39,460	40,444	2.5
Aug	6,142	6,867	11.8	45,602	47,311	3.7
Sep	5,456			51,058		
Oct	5,114			56,172		
Nov	4,419			60,591		
Dec	4,460			65,051		

¹ July 2006 data revised.

² Excludes all modified dry whey products.

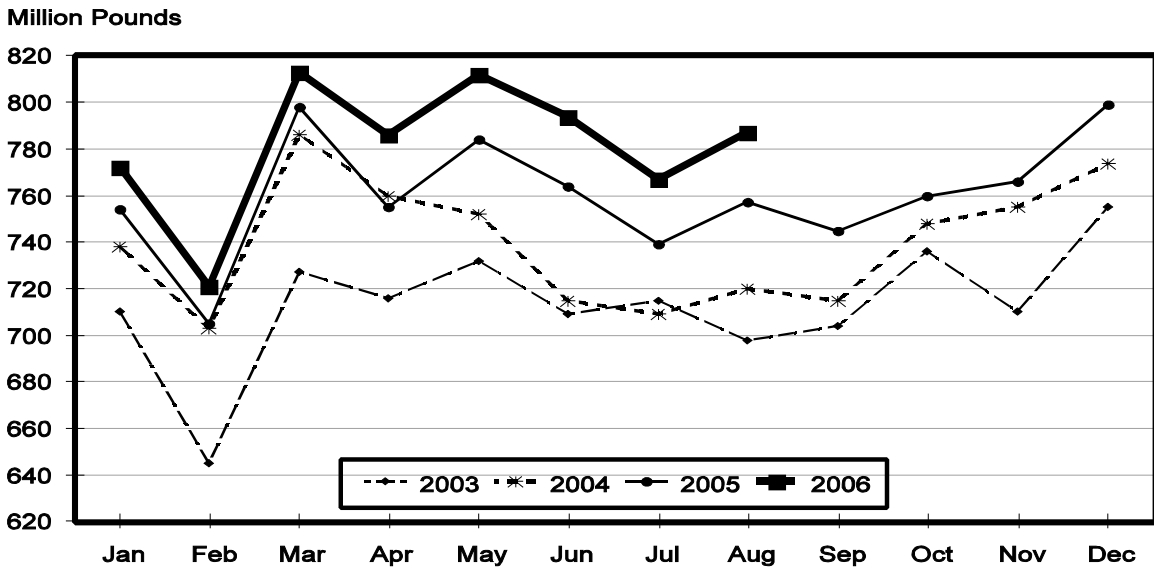
Total Cheese, Excluding Cottage Cheese: Production by State and United States, August 2005-2006

State	Aug 2005	Jul ¹ 2006	Aug 2006	Change From	
				Aug 2005	Jul 2006
	<i>1,000 Pounds</i>	<i>1,000 Pounds</i>	<i>1,000 Pounds</i>	<i>Percent</i>	<i>Percent</i>
CA	176,752	175,374	185,445	4.9	5.7
ID	68,388	66,314	71,497	4.5	7.8
IL	8,024	6,111	6,440	-19.7	5.4
IA	13,204	12,651	12,425	-5.9	-1.8
MN	49,689	50,990	48,402	-2.6	-5.1
NM		48,818	46,734		-4.3
NY	57,934	51,896	60,699	4.8	17.0
OH	16,706	16,304	16,254	-2.7	-0.3
PA	33,440	31,566	29,773	-11.0	-5.7
SD	14,279	15,124	14,615	2.4	-3.4
UT	5,768	5,728	5,696	-1.2	-0.6
WI	205,630	197,094	199,844	-2.8	1.4
Oth Sts ²	107,588	89,466	89,133	-17.2	-0.4
US	757,402	767,436	786,957	3.9	2.5
N Atl	108,031	99,693	108,760	0.7	9.1
S Atl	3,058	3,720	3,045	-0.4	-18.1
E N Cen	240,011	232,883	232,649	-3.1	-0.1
W N Cen	81,785	83,310	80,039	-2.1	-3.9
S Cen	9,293	10,077	10,381	11.7	3.0
West	315,224	337,753	352,083	11.7	4.2

¹ Revised.

² States not shown when fewer than 3 plants reported or individual plant operations could be disclosed. Percent change shown only when comparable States are included in the calculation.

Total Cheese Production United States



American Cheese: Production by State and United States, August 2005-2006

State	Aug 2005	Jul ¹ 2006	Aug 2006	Change From	
				Aug 2005	Jul 2006
	<i>1,000 Pounds</i>	<i>1,000 Pounds</i>	<i>1,000 Pounds</i>	<i>Percent</i>	<i>Percent</i>
CA	70,215	65,764	66,315	-5.6	0.8
ID	47,586	49,220	50,584	6.3	2.8
IA	10,160	9,902	9,496	-6.5	-4.1
MN	46,952	47,353	45,688	-2.7	-3.5
OH	3,467	3,507	3,164	-8.7	-9.8
OR	9,700	9,862	9,731	0.3	-1.3
WI	72,366	68,800	62,400	-13.8	-9.3
Oth Sts ²	51,582	73,818	70,871	37.4	-4.0
US	312,028	328,226	318,249	2.0	-3.0
Atlantic	11,128	12,634	12,232	9.9	-3.2
E N Cen	76,767	73,454	66,105	-13.9	-10.0
W N Cen	64,733	65,129	62,766	-3.0	-3.6
S Cen	3,055	3,877	2,839	-7.1	-26.8
West	156,345	173,132	174,307	11.5	0.7

¹ Revised.

² States not shown when fewer than 3 plants reported or individual plant operations could be disclosed. Percent change shown only when comparable States are included in the calculation.

Cheddar Cheese: Production by State and United States, August 2005-2006

State	Aug 2005	Jul ¹ 2006	Aug 2006	Change From	
				Aug 2005	Jul 2006
	<i>1,000 Pounds</i>	<i>1,000 Pounds</i>	<i>1,000 Pounds</i>	<i>Percent</i>	<i>Percent</i>
CA	40,322	40,345	41,316	2.5	2.4
ID	43,302	44,980	46,790	8.1	4.0
MN	42,324	43,761	40,652	-4.0	-7.1
OH	2,268	2,636	2,286	0.8	-13.3
WI	57,095	54,200	47,700	-16.5	-12.0
Oth Sts ²	59,833	81,166	73,918	23.5	-8.9
US	245,144	267,088	252,662	3.1	-5.4
Atlantic	10,788	11,908	11,725	8.7	-1.5
E N Cen	59,378	56,852	50,002	-15.8	-12.0
W N Cen	53,738	56,469	51,892	-3.4	-8.1
S Cen	3,054	3,875	2,836	-7.1	-26.8
West	118,186	137,984	136,207	15.2	-1.3

¹ Revised.

² States not shown when fewer than 3 plants reported or individual plant operations could be disclosed. Percent change shown only when comparable States are included in the calculation.

Italian Cheese, Total: Production by State and United States, August 2005-2006

State	Aug 2005	Jul ¹ 2006	Aug 2006	Change From	
				Aug 2005	Jul 2006
	<i>1,000 Pounds</i>	<i>1,000 Pounds</i>	<i>1,000 Pounds</i>	<i>Percent</i>	<i>Percent</i>
CA	91,451	93,969	102,863	12.5	9.5
ID	13,947	10,608	13,394	-4.0	26.3
NY	29,328	29,286	31,851	8.6	8.8
PA	20,574	21,635	18,351	-10.8	-15.2
SD	7,053	7,709	7,492	6.2	-2.8
WI	92,921	91,691	96,131	3.5	4.8
Oth Sts ²	56,244	63,299	61,230	8.9	-3.3
US ³	311,518	318,197	331,312	6.4	4.1
Atlantic	61,734	61,790	61,320	-0.7	-0.8
E N Cen	103,691	105,398	107,716	3.9	2.2
West	134,000	137,074	149,832	11.8	9.3

¹ Revised.

² States not shown when fewer than 3 plants reported or individual plant operations could be disclosed. Percent change shown only when comparable States are included in the calculation.

³ Region totals may not add to U.S. when compiled regions could not be disclosed.

Mozzarella Cheese: Production by State and United States, August 2005-2006

State	Aug 2005	Jul ¹ 2006	Aug 2006	Change From	
				Aug 2005	Jul 2006
	<i>1,000 Pounds</i>	<i>1,000 Pounds</i>	<i>1,000 Pounds</i>	<i>Percent</i>	<i>Percent</i>
CA	79,776	82,583	91,436	14.6	10.7
ID	12,106	9,128	11,786	-2.6	29.1
NY	14,525	16,659	15,909	9.5	-4.5
PA	16,302	18,979	15,443	-5.3	-18.6
WI	68,259	68,100	70,200	2.8	3.1
Oth Sts ²	53,663	59,308	57,834	7.8	-2.5
US ³	244,631	254,757	262,608	7.3	3.1
Atlantic	39,799	42,897	39,746	-0.1	-7.3
E N Cen	76,840	79,922	79,322	3.2	-0.8
West	119,517	123,407	135,506	13.4	9.8

¹ Revised.

² States not shown when fewer than 3 plants reported or individual plant operations could be disclosed. Percent change shown only when comparable States are included in the calculation.

³ Region totals may not add to U.S. when compiled regions could not be disclosed.

Butter: Production by State and United States, August 2005-2006

State	Aug 2005	Jul ¹ 2006	Aug 2006	Change From	
				Aug 2005	Jul 2006
	<i>1,000 Pounds</i>	<i>1,000 Pounds</i>	<i>1,000 Pounds</i>	<i>Percent</i>	<i>Percent</i>
CA	31,887	26,008	31,674	-0.7	21.8
NY	575	1,267	688	19.7	-45.7
PA	3,244	4,926	1,822	-43.8	-63.0
WI	27,236	25,140	22,200	-18.5	-11.7
Oth Sts ²	30,252	37,226	32,818	8.5	-11.8
US ³	93,194	94,567	89,202	-4.3	-5.7
N Atl	4,963	7,557	3,235	-34.8	-57.2
E N Cen	29,216	27,296	24,278	-16.9	-11.1
W N Cen	4,578	7,576	6,986	52.6	-7.8
West	47,775	43,699	46,171	-3.4	5.7

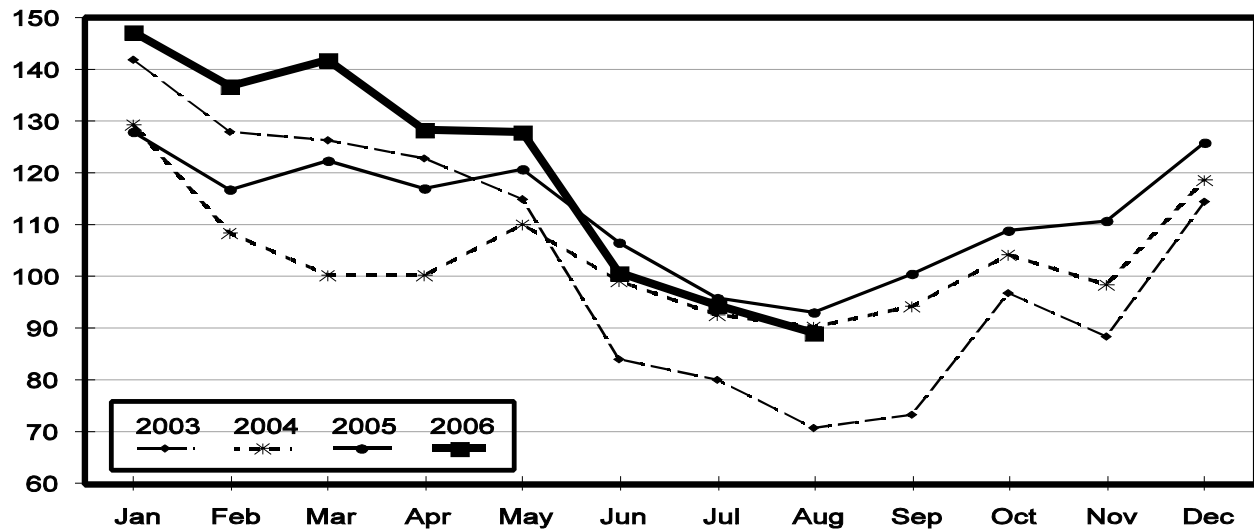
¹ Revised.

² States not shown when fewer than 3 plants reported or individual plant operations could be disclosed. Percent change shown only when comparable States are included in the calculation.

³ Region totals may not add to U.S. when compiled regions could not be disclosed.

Total Butter Production United States

Million Pounds



**Nonfat Dry Milk, Human: Production by State
and United States, August 2005-2006**

State	Aug 2005	Jul ¹ 2006	Aug 2006	Change From	
				Aug 2005	Jul 2006
	<i>1,000 Pounds</i>	<i>1,000 Pounds</i>	<i>1,000 Pounds</i>	<i>Percent</i>	<i>Percent</i>
CA	37,699	35,356	42,707	13.3	20.8
PA	4,580	7,915	2,477	-45.9	-68.7
Oth Sts ²	44,400	44,956	29,220	-34.2	-35.0
US	86,679	88,227	74,404	-14.2	-15.7
Atlantic	9,899	15,705	4,307	-56.5	-72.6
E N Cen	3,872	6,527	3,342	-13.7	-48.8
W N Cen	3,789	5,074	4,006	5.7	-21.0
S Cen	5,303	2,585	452	-91.5	-82.5
West	63,816	58,336	62,297	-2.4	6.8

¹ Revised.

² States not shown when fewer than 3 plants reported or individual plant operations could be disclosed. Percent change shown only when comparable States are included in the calculation.

**Dry Whey, Human: Production by State
and United States, August 2005-2006**

State	Aug 2005	Jul ¹ 2006	Aug 2006	Change From	
				Aug 2005	Jul 2006
	<i>1,000 Pounds</i>	<i>1,000 Pounds</i>	<i>1,000 Pounds</i>	<i>Percent</i>	<i>Percent</i>
CA	10,800	8,582	7,979	-26.1	-7.0
MN	4,177	4,081	4,826	15.5	18.3
NY	9,259	12,201	11,196	20.9	-8.2
WI	25,819	25,283	25,100	-2.8	-0.7
Oth Sts ²	30,209	34,764	34,401	13.9	-1.0
US	80,264	84,911	83,502	4.0	-1.7
Atlantic	16,882	20,595	18,988	12.5	-7.8
Central	38,107	39,305	38,644	1.4	-1.7
West	25,275	25,011	25,870	2.4	3.4

¹ Revised.

² States not shown when fewer than 3 plants reported or individual plant operations could be disclosed. Percent change shown only when comparable States are included in the calculation.

Ice Cream, Hard: Production by State and United States, August 2005-2006

State	Aug 2005	Jul ¹ 2006	Aug 2006	Change From	
				Aug 2005	Jul 2006
	<i>1,000 Gallons</i>	<i>1,000 Gallons</i>	<i>1,000 Gallons</i>	<i>Percent</i>	<i>Percent</i>
CA	15,204	12,580	13,780	-9.4	9.5
FL	1,735	1,850	1,600	-7.8	-13.5
IN	7,362	8,229	7,411	0.7	-9.9
MD	1,412	1,746	1,918	35.8	9.9
MA	4,950	5,145	4,529	-8.5	-12.0
MN	4,159	3,945	4,164	0.1	5.6
MO	2,127	2,813	2,064	-3.0	-26.6
NY	2,965	2,051	1,996	-32.7	-2.7
OH	2,737	2,340	2,629	-3.9	12.4
OR	1,437	1,318	1,361	-5.3	3.3
PA	4,737	3,769	4,130	-12.8	9.6
TN	1,621	1,454	1,722	6.2	18.4
TX	5,350	5,407	5,820	8.8	7.6
UT	2,426	2,618	2,723	12.2	4.0
Oth Sts ²	30,920	30,109	28,695	-7.2	-4.7
US	89,142	85,374	84,542	-5.2	-1.0
N Atl	17,495	14,537	13,948	-20.3	-4.1
S Atl	6,214	6,820	6,501	4.6	-4.7
E N Cen	16,618	16,753	16,059	-3.4	-4.1
W N Cen	14,496	15,188	14,190	-2.1	-6.6
S Cen	11,600	11,512	12,299	6.0	6.8
West	22,719	20,564	21,545	-5.2	4.8

¹ Revised.

² States not shown when fewer than 3 plants reported or individual plant operations could be disclosed. Percent change shown only when comparable States are included in the calculation.

**Canned Milk and Dry Milk Products: Manufacturers' Shipments,
and Stocks, August, 2005-2006**

Product	Aug 2005	Jul 2006 ¹	Aug 2006	Change From	
				Aug 2005	Jul 2006
	Manufacturers' Shipments ²				
	<i>1,000 Pounds</i>	<i>1,000 Pounds</i>	<i>1,000 Pounds</i>	<i>Percent</i>	<i>Percent</i>
Nonfat Dry Milk, Human	70,957	106,795	93,149	31.3	-12.8
	Manufacturers' Stocks End-of-Month ³				
	<i>1,000 Pounds</i>	<i>1,000 Pounds</i>	<i>1,000 Pounds</i>	<i>Percent</i>	<i>Percent</i>
Canned Evaporated and Condensed Whole Milk	82,422	86,954	93,507	13.4	7.5
Nonfat Dry Milk, Human	112,646	82,896	56,587	-49.8	-31.7
Dry Buttermilk, Total	6,936	4,775	3,860	-44.3	-19.2

¹ Revised.

² For dry products, shipments of bulk goods only.

³ Stocks held by manufacturers at all points and in transit.

Procedures and Reliability: Estimates included in this report are based on data provided each month by manufacturers of these products. In 32 States, the State Departments of Agriculture assist in collection of data, which eliminates duplicate reporting and reduces respondent burden. Data are collected by mail, personal and telephone interviews following the close of each month. There were 1,081 manufacturers that made one or more products in 2005. Each month, reports are generally received from all dairy plants in States with small numbers of plants. In States with large numbers of plants, survey procedures are designed to obtain monthly reports from all large plants and from a sample of small plants. Monthly estimates are based upon returns from about 70 percent of the plants which account for 70 to 90 percent of the total production of major dairy products.

Revision Policy: Monthly estimates are subject to revision the month following the preliminary estimates. Annual estimates are published in the "**Dairy Products**" report published each April which includes any revisions made to current and previous year. An attempt is made to get information from all plants for preparing these estimates

Information Contacts

Listed below are the commodity specialists in the Livestock Branch of the National Agricultural Statistics Service to contact for additional information.

Dan Kerestes, Chief, Livestock Branch	(202) 720-3570
William Weaver, Head, Livestock Section	(202) 720-3570
Bruce Boess - Hogs and Pigs	(202) 720-3106
Shawn Clark - Dairy Products	(202) 690-3236
Jason Hardegree - Milk Production and Milk Cows	(202) 720-3278
Scott Hollis - Sheep & Lambs, Goats	(202) 720-4751
Mike Miller - Cattle, Cattle on Feed	(202) 720-3040
Katy Paulsen - Livestock Slaughter	(515) 284-4340
Charmaine Wilson - Dairy Products Prices	(202) 690-2168

ACCESS TO REPORTS!!

For your convenience, there are several ways to obtain NASS reports, data products, and services:

INTERNET ACCESS

All NASS reports are available free of charge on the worldwide Internet. For access, connect to the Internet and go to the NASS Home Page at: www.nass.usda.gov.

E-MAIL SUBSCRIPTION

All NASS reports are available by subscription free of charge direct to your e-mail address. Starting with the NASS Home Page at www.nass.usda.gov, under the right navigation, *Receive reports by Email*, click on **National** or **State**. Follow the instructions on the screen.

PRINTED REPORTS OR DATA PRODUCTS

CALL OUR TOLL-FREE ORDER DESK: 800-999-6779 (U.S. and Canada)
Other areas, please call 703-605-6220 FAX: 703-605-6900
(Visa, MasterCard, check, or money order acceptable for payment.)

ASSISTANCE

For **assistance** with general agricultural statistics or further information about NASS or its products or services, contact the **Agricultural Statistics Hotline** at **800-727-9540**, 7:30 a.m. to 4:00 p.m. ET, or e-mail: nass@nass.usda.gov.

The U.S. Department of Agriculture (USDA) prohibits discrimination in all its programs and activities on the basis of race, color, national origin, age, disability, and where applicable, sex, marital status, familial status, parental status, religion, sexual orientation, genetic information, political beliefs, reprisal, or because all or part of an individual's income is derived from any public assistance program. (Not all prohibited bases apply to all programs.) Persons with disabilities who require alternative means for communication of program information (Braille, large print, audiotape, etc.) should contact USDA's TARGET Center at (202) 720-2600 (voice and TDD).

To file a complaint of discrimination, write to USDA, Director, Office of Civil Rights, 1400 Independence Avenue, S.W., Washington, D.C. 20250-9410, or call (800) 795-3272 (voice) or (202) 720-6382 (TDD). USDA is an equal opportunity provider and employer.