



# NASS

FACT FINDERS FOR AGRICULTURE  
UNITED STATES DEPARTMENT OF AGRICULTURE

Washington, D.C.

# Dairy Products

---

Released November 3, 2006, by the National Agricultural Statistics Service (NASS), Agricultural Statistics Board, U.S. Department of Agriculture. For information on *Dairy Products* call Shawn Clark at (202) 690-3236, office hours 7:30 a.m. to 4:00 p.m. ET.

## September 2006 Highlights

**Total cheese** output (excluding cottage cheese) was 785 million pounds, 5.3 percent above September 2005 but 0.5 percent below August 2006.

**Italian type cheese** production totaled 324 million pounds, 4.3 percent above September 2005 but 2.8 percent below August 2006.

**American type cheese** production totaled 325 million pounds, 7.7 percent above September 2005 and 1.9 percent above August 2006.

**Butter** production was 103 million pounds, 2.0 percent above September 2005 and 16.3 percent above August 2006.

**Frozen dessert:** (comparisons with September 2005)

Ice cream, Regular (hard) --- 72.7 million gallons, up 0.5 percent.

Ice cream, Lowfat (total) --- 30.8 million gallons, up 0.3 percent.

Ice cream, Nonfat (hard) --- 1.02 million gallons, down 36.8 percent.

Sherbet (hard) --- 3.85 million gallons, down 22.3 percent.

Frozen Yogurt (total) --- 5.35 million gallons, down 1.9 percent.

**Nonfat dry milk for human food:** (compared with September 2005) --- 64.9 million pounds, down 8.5 percent.

**Dry whey products:** (comparisons with September 2005)

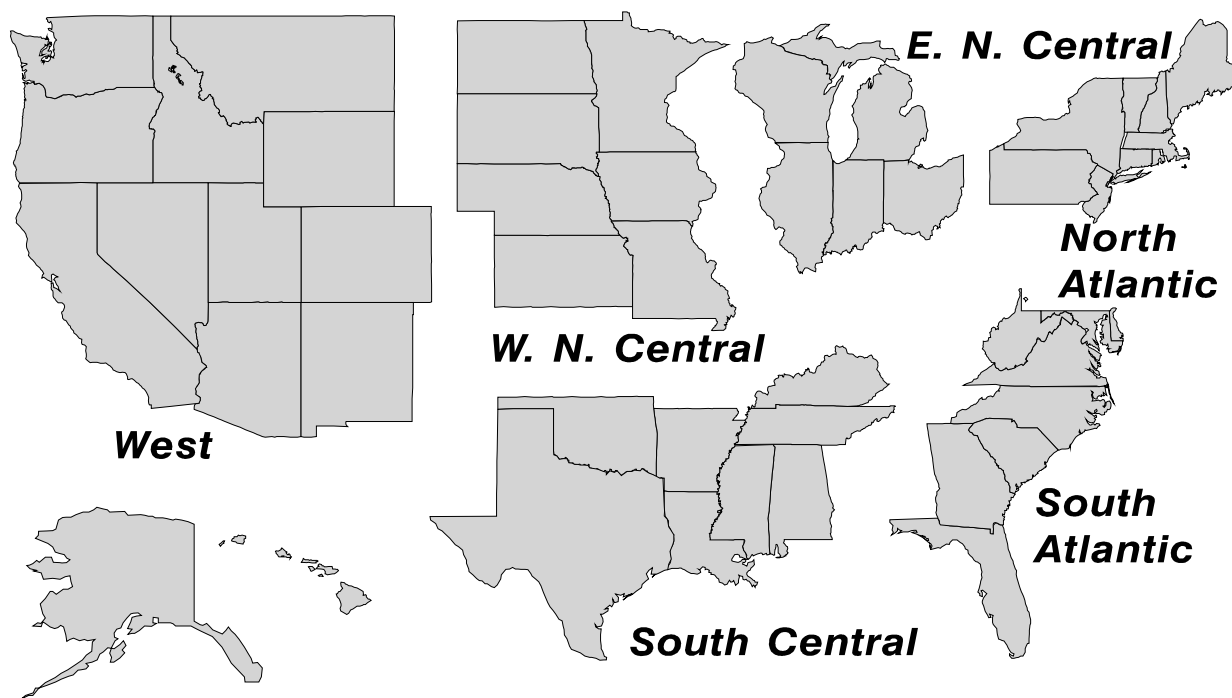
Dry whey, human --- 82.4 million pounds, up 6.6 percent.

Dry whey, animal --- 3.96 million pounds, down 40.3 percent.

Dry whey, total --- 86.4 million pounds, up 2.9 percent.

## U. S. Geographic Regions Dairy Products

If we are not able to publish a region for confidentiality reasons, it will be combined with other regions when possible. For example, if North Atlantic can not be published, then it will be combined with South Atlantic to publish Atlantic. The West North Central and East North Central will be combined, if necessary, to form North Central. In the event that neither could be published, they may be combined with South Central to publish Central. Some tables will have only limited regions shown, therefore the regions may not add to the United States total.



## Contents

## Page

Dairy Products: Production by Product, United States .....	1
Whey and Modified Whey Products: Production, Stocks, and Prices, United States .....	2
Dairy Products: Production by Product and Month, United States .....	3
Select Commodities by State and United States .....	10
Canned Milk and Dry Milk Products: Manufacturer's Shipments, Stocks, and Selling Prices .....	15
Procedures and Reliability .....	16
Information Contacts .....	16

**Dairy Products: Production by Product,  
United States, September, 2005-2006**

Product	Sep 2005	Aug 2006 <sup>1</sup>	Sep 2006	Change From	
				Sep 2005	Aug 2006
	<i>1,000 Pounds</i>	<i>1,000 Pounds</i>	<i>1,000 Pounds</i>	<i>Percent</i>	<i>Percent</i>
Butter	100,647	88,325	102,701	2.0	16.3
Cheese					
American Types <sup>2</sup>	301,791	318,930	324,935	7.7	1.9
Cheddar	239,629	252,126	258,563	7.9	2.6
Swiss	24,170	24,428	24,037	-0.6	-1.6
Brick and Muenster	8,058	10,031	8,199	1.7	-18.3
Cream and Neufchatel	66,081	65,601	67,277	1.8	2.6
Hispanic	14,569	15,282	15,237	4.6	-0.3
Mozzarella	243,687	263,715	258,063	5.9	-2.1
Other Italian Types	66,652	69,287	65,761	-1.3	-5.1
Total Italian Types	310,339	333,002	323,824	4.3	-2.8
All Other Types	20,477	21,634	21,281	3.9	-1.6
Total	745,485	788,908	784,790	5.3	-0.5
Cottage Cheese, Curd <sup>3</sup>	40,302	42,675	38,903	-3.5	-8.8
Cottage Cheese, Cream <sup>4</sup>	33,011	34,975	30,203	-8.5	-13.6
Cottage Cheese, Lowfat <sup>5</sup>	34,506	37,512	33,369	-3.3	-11.0
Canned Evaporated and Condensed Whole Milk	41,162	42,059	44,434	7.9	5.6
Dry Whole Milk	2,287	2,880	2,334	2.1	-19.0
Nonfat Dry Milk, Human Skim Milk Powders <sup>6</sup>	70,954	75,860	64,905	-8.5	-14.4
Dry Skim Milk, Animal	530	427	314	-40.8	-26.5
Dry Buttermilk	4,901	3,399	4,093	-16.5	20.4
Sour Cream	79,208	97,363	86,749	9.5	-10.9
Yogurt, Plain & Flavored	273,643	283,584	265,457	-3.0	-6.4
	<i>1,000 Gallons</i>	<i>1,000 Gallons</i>	<i>1,000 Gallons</i>	<i>Percent</i>	<i>Percent</i>
Frozen Products					
Ice Cream, Regular, Hard	72,359	84,777	72,727	0.5	-14.2
Ice Cream, Lowfat, Hard	10,194	10,580	10,916	7.1	3.2
Ice Cream, Lowfat, Soft	20,551	27,078	19,924	-3.1	-26.4
Ice Cream, Lowfat, Total	30,745	37,658	30,840	0.3	-18.1
Ice Cream, Nonfat, Hard	1,611	1,358	1,018	-36.8	-25.0
Sherbet, Hard	4,953	4,777	3,848	-22.3	-19.4
Water and Juice Ices	4,964	5,853	4,810	-3.1	-17.8
Frozen Yogurt, Total	5,456	6,852	5,353	-1.9	-21.9
Regular & Lowfat, Hard	1,651	1,869	1,429	-13.4	-23.5
Nonfat, Hard	1,001	1,195	1,033	3.2	-13.6
Other Frozen Dairy Products	516	1,009	909	76.2	-9.9
Mix for Frozen Products					
Ice Cream Mix	40,123	47,494	39,374	-1.9	-17.1
Ice Cream, Lowfat, Mix	17,711	21,783	17,676	-0.2	-18.9
Ice Cream, Nonfat, Mix	1,004	841	642	-36.1	-23.7
Sherbet Mix	3,380	3,398	2,721	-19.5	-19.9
Yogurt Mix	3,295	4,153	3,244	-1.5	-21.9

<sup>1</sup> Revised.

<sup>2</sup> Includes Cheddar, Colby, Monterey, and Jack.

<sup>3</sup> Mostly used for processing into cream or lowfat cottage cheese.

<sup>4</sup> Fat content 4 percent or more.

<sup>5</sup> Fat content less than 4 percent.

<sup>6</sup> Includes protein standardized and blends.

**Whey and Modified Whey Products: Production, Stocks,  
and Prices, United States, September, 2005-2006**

Product	Sep 2005	Aug 2006 <sup>1</sup>	Sep 2006	Change From	
				Sep 2005	Aug 2006
<b>Production</b>					
	<i>1,000 Pounds</i>	<i>1,000 Pounds</i>	<i>1,000 Pounds</i>	<i>Percent</i>	<i>Percent</i>
Condensed Whey, Solids Content <sup>2</sup>					
Sweet-Type, Human	6,804	9,100	8,274	21.6	-9.1
Dry Whey Products					
Dry Whey, Human	77,319	87,353	82,421	6.6	-5.6
Dry Whey, Animal	6,629	4,704	3,958	-40.3	-15.9
Dry Whey, Total	83,948	92,057	86,379	2.9	-6.2
Reduced Lactose and Minerals					
Human Food	3,257	2,980	3,690	13.3	23.8
Animal Feed	3,975	3,759	3,591	-9.7	-4.5
Lactose, Human and Animal	56,282	59,593	56,338	0.1	-5.5
Whey					
Protein Concentrate					
Human <sup>3</sup>	28,147	29,244	29,054	3.2	-0.6
Animal <sup>3</sup>	4,027	4,491	4,188	4.0	-6.7
Total <sup>3</sup>	32,174	33,735	33,242	3.3	-1.5
25.0-49.9 Percent <sup>4</sup>	24,084	23,525	22,612	-6.1	-3.9
50.0-89.9 Percent <sup>4</sup>	8,090	10,210	10,630	31.4	4.1
Protein Isolates <sup>5</sup>	2,334	2,556	2,551	9.3	-0.2
<b>Manufacturers' Stocks End-of-Month <sup>6</sup></b>					
	<i>1,000 Pounds</i>	<i>1,000 Pounds</i>	<i>1,000 Pounds</i>	<i>Percent</i>	<i>Percent</i>
Dry Whey Products					
Dry Whey, Human	33,612	32,235	33,139	-1.4	2.8
Dry Whey, Animal	4,277	2,272	1,811	-57.7	-20.3
Dry Whey, Total	37,889	34,507	34,950	-7.8	1.3
Reduced Lactose and Minerals					
Human and Animal <sup>7</sup>	4,319	3,748	4,338	0.4	15.7
Lactose, Human and Animal	50,421	37,672	43,671	-13.4	15.9
Whey					
Protein Concentrate					
Human <sup>3</sup>	23,823	24,456	25,974	9.0	6.2
Animal <sup>3</sup>	2,099	2,433	2,400	14.3	-1.4
Total <sup>3</sup>	25,922	26,889	28,374	9.5	5.5
25.0-49.9 Percent <sup>4</sup>	16,235	18,314	17,397	7.2	-5.0
50.0-89.9 Percent <sup>4</sup>	9,687	8,575	10,977	13.3	28.0
<b>Manufacturers' Selling Price <sup>8</sup></b>					
	<i>Cents per Pound</i>	<i>Cents per Pound</i>	<i>Cents per Pound</i>	<i>Cents Change</i>	<i>Cents Change</i>
Dry Whey, Animal	26.7	25.1	30.0	3.3	4.9

<sup>1</sup> Revised.

<sup>2</sup> Final marketable product only. Does not include quantity used or shipped to another plant for further processing into dry whey or modified whey products. Does not include sweet-type, animal whey.

<sup>3</sup> Whey Protein Concentrate, 25.0 to 89.9 percent.

<sup>4</sup> Whey Protein Concentrate, Human and Animal.

<sup>5</sup> Whey Protein Isolate, 90.0 percent or greater.

<sup>6</sup> Stocks held by manufacturers at all points and in transit.

<sup>7</sup> Reduced lactose and minerals stocks combined to avoid disclosure of individual operations.

<sup>8</sup> Prices for bulk goods, f.o.b. plant. Average monthly prices reported by firms.

**Dairy Products: Production by Product and Month,  
United States, 2005-2006 <sup>1</sup>**

Product and Month	By Month			Cumulative		
	2005	2006	Change From 2005	2005	2006	Change From 2005
	<i>1,000 Pounds</i>	<i>1,000 Pounds</i>	<i>Percent</i>	<i>1,000 Pounds</i>	<i>1,000 Pounds</i>	<i>Percent</i>
<b>Total Cheese</b>						
Jan	753,967	772,337	2.4	753,967	772,337	2.4
Feb	704,633	720,978	2.3	1,458,600	1,493,315	2.4
Mar	797,511	812,634	1.9	2,256,111	2,305,949	2.2
Apr	754,849	786,477	4.2	3,010,960	3,092,426	2.7
May	783,943	811,591	3.5	3,794,903	3,904,017	2.9
Jun	764,468	793,937	3.9	4,559,371	4,697,954	3.0
Jul	739,472	767,436	3.8	5,298,843	5,465,390	3.1
Aug	757,402	788,908	4.2	6,056,245	6,254,298	3.3
Sep	745,485	784,790	5.3	6,801,730	7,039,088	3.5
Oct	760,407			7,562,137		
Nov	766,061			8,328,198		
Dec	798,909			9,127,107		
<b>American Cheese</b>						
Jan	322,332	324,545	0.7	322,332	324,545	0.7
Feb	292,238	304,376	4.2	614,570	628,921	2.3
Mar	331,468	338,383	2.1	946,038	967,304	2.2
Apr	327,575	338,715	3.4	1,273,613	1,306,019	2.5
May	332,501	346,512	4.2	1,606,114	1,652,531	2.9
Jun	321,389	337,024	4.9	1,927,503	1,989,555	3.2
Jul	315,977	328,226	3.9	2,243,480	2,317,781	3.3
Aug	312,028	318,930	2.2	2,555,508	2,636,711	3.2
Sep	301,791	324,935	7.7	2,857,299	2,961,646	3.7
Oct	312,321			3,169,620		
Nov	313,195			3,482,815		
Dec	330,135			3,812,950		
<b>Cheddar Cheese</b>						
Jan	261,868	265,809	1.5	261,868	265,809	1.5
Feb	237,987	246,344	3.5	499,855	512,153	2.5
Mar	268,668	270,553	0.7	768,523	782,706	1.8
Apr	262,787	273,664	4.1	1,031,310	1,056,370	2.4
May	265,569	275,298	3.7	1,296,879	1,331,668	2.7
Jun	258,211	268,350	3.9	1,555,090	1,600,018	2.9
Jul	252,709	267,088	5.7	1,807,799	1,867,106	3.3
Aug	245,144	252,126	2.8	2,052,943	2,119,232	3.2
Sep	239,629	258,563	7.9	2,292,572	2,377,795	3.7
Oct	248,910			2,541,482		
Nov	248,464			2,789,946		
Dec	262,469			3,052,415		

See footnote(s) at end of table.

--continued

**Dairy Products: Production by Product and Month,  
United States, 2005-2006 <sup>1</sup> (continued)**

Product and Month	By Month			Cumulative		
	2005	2006	Change From 2005	2005	2006	Change From 2005
	<i>1,000 Pounds</i>	<i>1,000 Pounds</i>	<i>Percent</i>	<i>1,000 Pounds</i>	<i>1,000 Pounds</i>	<i>Percent</i>
Italian Cheese						
Jan	316,288	328,315	3.8	316,288	328,315	3.8
Feb	299,673	307,623	2.7	615,961	635,938	3.2
Mar	338,682	346,179	2.2	954,643	982,117	2.9
Apr	310,719	328,588	5.8	1,265,362	1,310,705	3.6
May	327,196	335,577	2.6	1,592,558	1,646,282	3.4
Jun	319,049	326,014	2.2	1,911,607	1,972,296	3.2
Jul	303,054	318,197	5.0	2,214,661	2,290,493	3.4
Aug	311,518	333,002	6.9	2,526,179	2,623,495	3.9
Sep	310,339	323,824	4.3	2,836,518	2,947,319	3.9
Oct	311,901			3,148,419		
Nov	320,304			3,468,723		
Dec	336,007			3,804,730		
Mozzarella						
Jan	250,595	259,574	3.6	250,595	259,574	3.6
Feb	239,382	242,804	1.4	489,977	502,378	2.5
Mar	269,830	273,870	1.5	759,807	776,248	2.2
Apr	247,184	261,653	5.9	1,006,991	1,037,901	3.1
May	262,238	267,474	2.0	1,269,229	1,305,375	2.8
Jun	255,540	261,675	2.4	1,524,769	1,567,050	2.8
Jul	243,304	254,757	4.7	1,768,073	1,821,807	3.0
Aug	244,631	263,715	7.8	2,012,704	2,085,522	3.6
Sep	243,687	258,063	5.9	2,256,391	2,343,585	3.9
Oct	243,671			2,500,062		
Nov	252,933			2,752,995		
Dec	267,803			3,020,798		
Other Italian						
Jan	65,693	68,741	4.6	65,693	68,741	4.6
Feb	60,291	64,819	7.5	125,984	133,560	6.0
Mar	68,852	72,309	5.0	194,836	205,869	5.7
Apr	63,535	66,935	5.4	258,371	272,804	5.6
May	64,958	68,103	4.8	323,329	340,907	5.4
Jun	63,509	64,339	1.3	386,838	405,246	4.8
Jul	59,750	63,440	6.2	446,588	468,686	4.9
Aug	66,887	69,287	3.6	513,475	537,973	4.8
Sep	66,652	65,761	-1.3	580,127	603,734	4.1
Oct	68,230			648,357		
Nov	67,371			715,728		
Dec	68,204			783,932		

See footnote(s) at end of table.

--continued

**Dairy Products: Production by Product and Month,  
United States, 2005-2006 <sup>1</sup> (continued)**

Product and Month	By Month			Cumulative		
	2005	2006	Change From 2005	2005	2006	Change From 2005
	<i>1,000 Pounds</i>	<i>1,000 Pounds</i>	<i>Percent</i>	<i>1,000 Pounds</i>	<i>1,000 Pounds</i>	<i>Percent</i>
Butter						
Jan	128,020	147,251	15.0	128,020	147,251	15.0
Feb	116,927	136,953	17.1	244,947	284,204	16.0
Mar	122,402	141,993	16.0	367,349	426,197	16.0
Apr	117,061	128,457	9.7	484,410	554,654	14.5
May	120,715	128,126	6.1	605,125	682,780	12.8
Jun	106,559	100,779	-5.4	711,684	783,559	10.1
Jul	95,929	94,567	-1.4	807,613	878,126	8.7
Aug	93,194	88,325	-5.2	900,807	966,451	7.3
Sep	100,647	102,701	2.0	1,001,454	1,069,152	6.8
Oct	108,915			1,110,369		
Nov	110,905			1,221,274		
Dec	125,953			1,347,227		
Nonfat Dry Milk, Human						
Jan	93,261	107,254	15.0	93,261	107,254	15.0
Feb	97,275	117,466	20.8	190,536	224,720	17.9
Mar	109,299	128,269	17.4	299,835	352,989	17.7
Apr	104,876	129,225	23.2	404,711	482,214	19.2
May	124,329	132,262	6.4	529,040	614,476	16.1
Jun	124,206	117,049	-5.8	653,246	731,525	12.0
Jul	108,865	88,227	-19.0	762,111	819,752	7.6
Aug	86,679	75,860	-12.5	848,790	895,612	5.5
Sep	70,954	64,905	-8.5	919,744	960,517	4.4
Oct	73,554			993,298		
Nov	89,095			1,082,393		
Dec	103,711			1,186,104		
Total Dry Whey <sup>2</sup>						
Jan	85,936	88,243	2.7	85,936	88,243	2.7
Feb	79,665	89,713	12.6	165,601	177,956	7.5
Mar	91,775	101,239	10.3	257,376	279,195	8.5
Apr	91,260	96,339	5.6	348,636	375,534	7.7
May	94,083	97,119	3.2	442,719	472,653	6.8
Jun	89,357	90,168	0.9	532,076	562,821	5.8
Jul	89,143	90,348	1.4	621,219	653,169	5.1
Aug	87,438	92,057	5.3	708,657	745,226	5.2
Sep	83,948	86,379	2.9	792,605	831,605	4.9
Oct	82,186			874,791		
Nov	84,844			959,635		
Dec	86,187			1,045,822		

See footnote(s) at end of table.

--continued



**Dairy Products: Production by Product and Month,  
United States, 2005-2006 <sup>1</sup> (continued)**

Product and Month	By Month			Cumulative		
	2005	2006	Change From 2005	2005	2006	Change From 2005
	<i>1,000 Pounds</i>	<i>1,000 Pounds</i>	<i>Percent</i>	<i>1,000 Pounds</i>	<i>1,000 Pounds</i>	<i>Percent</i>
<b>Cream Cottage Cheese</b>						
Jan	29,553	27,785	-6.0	29,553	27,785	-6.0
Feb	27,833	27,193	-2.3	57,386	54,978	-4.2
Mar	32,682	32,115	-1.7	90,068	87,093	-3.3
Apr	30,623	28,580	-6.7	120,691	115,673	-4.2
May	31,463	31,383	-0.3	152,154	147,056	-3.4
Jun	32,266	31,096	-3.6	184,420	178,152	-3.4
Jul	31,938	29,114	-8.8	216,358	207,266	-4.2
Aug	33,782	34,975	3.5	250,140	242,241	-3.2
Sep	33,011	30,203	-8.5	283,151	272,444	-3.8
Oct	30,269			313,420		
Nov	28,679			342,099		
Dec	26,058			368,157		
<b>Lowfat Cottage Cheese</b>						
Jan	30,843	31,617	2.5	30,843	31,617	2.5
Feb	32,060	30,818	-3.9	62,903	62,435	-0.7
Mar	35,064	35,940	2.5	97,967	98,375	0.4
Apr	32,706	31,668	-3.2	130,673	130,043	-0.5
May	34,904	35,108	0.6	165,577	165,151	-0.3
Jun	35,362	33,458	-5.4	200,939	198,609	-1.2
Jul	32,436	32,960	1.6	233,375	231,569	-0.8
Aug	35,568	37,512	5.5	268,943	269,081	0.1
Sep	34,506	33,369	-3.3	303,449	302,450	-0.3
Oct	32,642			336,091		
Nov	31,406			367,497		
Dec	28,574			396,071		
	<i>1,000 Gallons</i>	<i>1,000 Gallons</i>	<i>Percent</i>	<i>1,000 Gallons</i>	<i>1,000 Gallons</i>	<i>Percent</i>
<b>Ice Cream, Regular, Hard</b>						
Jan	62,103	61,826	-0.4	62,103	61,826	-0.4
Feb	65,827	62,916	-4.4	127,930	124,742	-2.5
Mar	78,753	77,869	-1.1	206,683	202,611	-2.0
Apr	78,091	77,408	-0.9	284,774	280,019	-1.7
May	78,375	82,128	4.8	363,149	362,147	-0.3
Jun	91,190	87,898	-3.6	454,339	450,045	-0.9
Jul	87,054	85,374	-1.9	541,393	535,419	-1.1
Aug	89,142	84,777	-4.9	630,535	620,196	-1.6
Sep	72,359	72,727	0.5	702,894	692,923	-1.4
Oct	69,862			772,756		
Nov	61,133			833,889		
Dec	54,854			888,743		

See footnote(s) at end of table.

--continued

**Dairy Products: Production by Product and Month,  
United States, 2005-2006 <sup>1</sup> (continued)**

Product and Month	By Month			Cumulative		
	2005	2006	Change From 2005	2005	2006	Change From 2005
	<i>1,000 Gallons</i>	<i>1,000 Gallons</i>	<i>Percent</i>	<i>1,000 Gallons</i>	<i>1,000 Gallons</i>	<i>Percent</i>
<b>Ice Cream, Lowfat</b>						
Jan	24,199	25,444	5.1	24,199	25,444	5.1
Feb	26,181	24,134	-7.8	50,380	49,578	-1.6
Mar	32,927	31,475	-4.4	83,307	81,053	-2.7
Apr	33,192	32,054	-3.4	116,499	113,107	-2.9
May	33,123	37,226	12.4	149,622	150,333	0.5
Jun	38,572	41,999	8.9	188,194	192,332	2.2
Jul	36,928	36,919		225,122	229,251	1.8
Aug	35,592	37,658	5.8	260,714	266,909	2.4
Sep	30,745	30,840	0.3	291,459	297,749	2.2
Oct	27,013			318,472		
Nov	23,770			342,242		
Dec	21,726			363,968		
<b>Ice Cream, NF, Hard</b>						
Jan	1,205	1,330	10.4	1,205	1,330	10.4
Feb	1,715	1,254	-26.9	2,920	2,584	-11.5
Mar	1,686	1,607	-4.7	4,606	4,191	-9.0
Apr	1,682	1,324	-21.3	6,288	5,515	-12.3
May	1,730	1,486	-14.1	8,018	7,001	-12.7
Jun	1,923	1,402	-27.1	9,941	8,403	-15.5
Jul	2,188	1,349	-38.3	12,129	9,752	-19.6
Aug	1,910	1,358	-28.9	14,039	11,110	-20.9
Sep	1,611	1,018	-36.8	15,650	12,128	-22.5
Oct	1,538			17,188		
Nov	1,319			18,507		
Dec	1,153			19,660		
<b>Sherbet, Hard</b>						
Jan	3,838	3,893	1.4	3,838	3,893	1.4
Feb	4,036	4,173	3.4	7,874	8,066	2.4
Mar	4,924	4,582	-6.9	12,798	12,648	-1.2
Apr	5,111	4,557	-10.8	17,909	17,205	-3.9
May	4,934	4,791	-2.9	22,843	21,996	-3.7
Jun	5,825	5,210	-10.6	28,668	27,206	-5.1
Jul	5,425	4,898	-9.7	34,093	32,104	-5.8
Aug	5,632	4,777	-15.2	39,725	36,881	-7.2
Sep	4,953	3,848	-22.3	44,678	40,729	-8.8
Oct	3,724			48,402		
Nov	3,442			51,844		
Dec	3,436			55,280		

See footnote(s) at end of table.

--continued

**Dairy Products: Production by Product and Month,  
United States, 2005-2006 <sup>1</sup> (continued)**

Product and Month	By Month			Cumulative		
	2005	2006	Change From 2005	2005	2006	Change From 2005
	<i>1,000 Pounds</i>	<i>1,000 Pounds</i>	<i>Percent</i>	<i>1,000 Pounds</i>	<i>1,000 Pounds</i>	<i>Percent</i>
Sour Cream						
Jan	76,976	81,288	5.6	76,976	81,288	5.6
Feb	73,791	76,832	4.1	150,767	158,120	4.9
Mar	87,637	89,000	1.6	238,404	247,120	3.7
Apr	72,323	79,298	9.6	310,727	326,418	5.0
May	86,250	91,426	6.0	396,977	417,844	5.3
Jun	85,798	89,599	4.4	482,775	507,443	5.1
Jul	79,324	84,064	6.0	562,099	591,507	5.2
Aug	90,935	97,363	7.1	653,034	688,870	5.5
Sep	79,208	86,749	9.5	732,242	775,619	5.9
Oct	90,019			822,261		
Nov	108,466			930,727		
Dec	99,090			1,029,817		

See footnote(s) at end of table.

--continued

**Dairy Products: Production by Product and Month,  
United States, 2005-2006 <sup>1</sup> (continued)**

Product and Month	By Month			Cumulative		
	2005	2006	Change From 2005	2005	2006	Change From 2005
	<i>1,000 Pounds</i>	<i>1,000 Pounds</i>	<i>Percent</i>	<i>1,000 Pounds</i>	<i>1,000 Pounds</i>	<i>Percent</i>
Yogurt						
Jan	224,187	252,353	12.6	224,187	252,353	12.6
Feb	236,193	238,108	0.8	460,380	490,461	6.5
Mar	275,949	280,577	1.7	736,329	771,038	4.7
Apr	247,409	254,096	2.7	983,738	1,025,134	4.2
May	264,459	267,283	1.1	1,248,197	1,292,417	3.5
Jun	263,178	272,551	3.6	1,511,375	1,564,968	3.5
Jul	244,608	255,765	4.6	1,755,983	1,820,733	3.7
Aug	265,359	283,584	6.9	2,021,342	2,104,317	4.1
Sep	273,643	265,457	-3.0	2,294,985	2,369,774	3.3
Oct	249,329			2,544,314		
Nov	219,567			2,763,881		
Dec	225,908			2,989,789		

See footnote(s) at end of table.

--continued

**Dairy Products: Production by Product and Month,  
United States, 2005-2006 <sup>1</sup> (continued)**

Product and Month	By Month			Cumulative		
	2005	2006	Change From 2005	2005	2006	Change From 2005
	<i>1,000 Gallons</i>	<i>1,000 Gallons</i>	<i>Percent</i>	<i>1,000 Gallons</i>	<i>1,000 Gallons</i>	<i>Percent</i>
Frozen Yogurt						
Jan	4,353	4,131	-5.1	4,353	4,131	-5.1
Feb	4,910	4,524	-7.9	9,263	8,655	-6.6
Mar	5,942	6,044	1.7	15,205	14,699	-3.3
Apr	5,737	5,960	3.9	20,942	20,659	-1.4
May	6,239	6,663	6.8	27,181	27,322	0.5
Jun	6,412	6,882	7.3	33,593	34,204	1.8
Jul	5,867	6,240	6.4	39,460	40,444	2.5
Aug	6,142	6,852	11.6	45,602	47,296	3.7
Sep	5,456	5,353	-1.9	51,058	52,649	3.1
Oct	5,114			56,172		
Nov	4,419			60,591		
Dec	4,460			65,051		

<sup>1</sup> August 2006 data revised.

<sup>2</sup> Excludes all modified dry whey products.

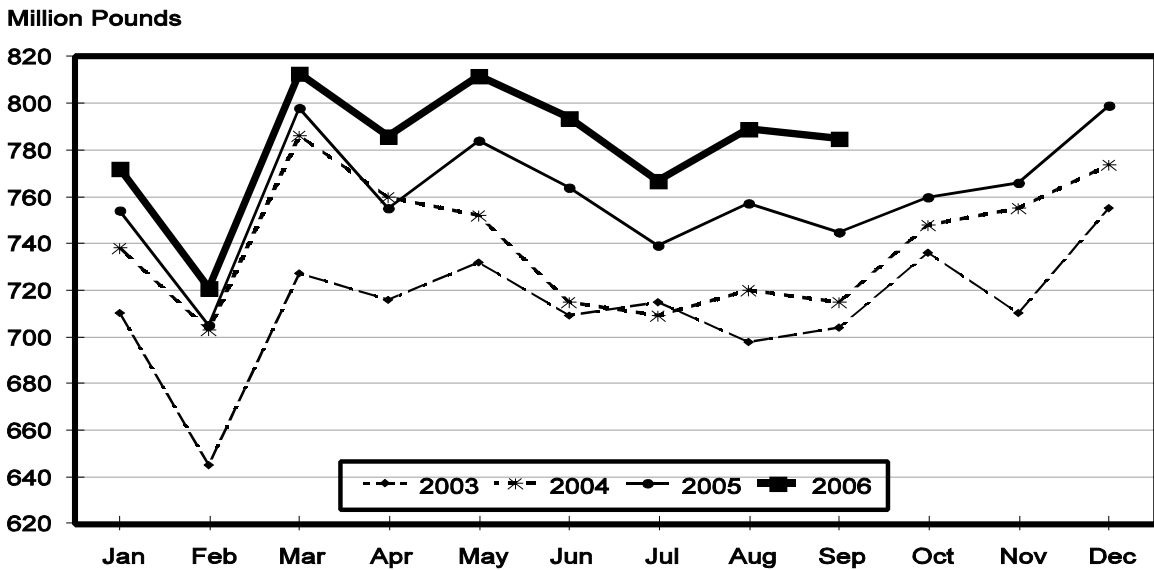
**Total Cheese, Excluding Cottage Cheese: Production by State and United States, September 2005-2006**

State	Sep 2005	Aug <sup>1</sup> 2006	Sep 2006	Change From	
				Sep 2005	Aug 2006
	<i>1,000 Pounds</i>	<i>1,000 Pounds</i>	<i>1,000 Pounds</i>	<i>Percent</i>	<i>Percent</i>
CA	174,150	188,071	184,914	6.2	-1.7
ID	65,542	71,504	66,547	1.5	-6.9
IL	8,045	6,440	6,402	-20.4	-0.6
IA	12,369	11,885	11,057	-10.6	-7.0
MN	48,752	48,873	47,092	-3.4	-3.6
NM		46,734	53,191		13.8
NY	58,427	60,761	60,472	3.5	-0.5
OH	16,306	16,254	15,785	-3.2	-2.9
PA	32,148	29,773	28,928	-10.0	-2.8
SD	14,552	14,832	14,548		-1.9
UT	5,784	5,696	5,819	0.6	2.2
WI	200,138	199,733	204,347	2.1	2.3
Oth Sts <sup>2</sup>	109,272	88,352	85,688		-3.0
US	745,485	788,908	784,790	5.3	-0.5
N Atl	106,200	108,291	102,988	-3.0	-4.9
S Atl	3,029	3,019	3,015	-0.5	-0.1
E N Cen	234,190	232,538	236,392	0.9	1.7
W N Cen	80,750	80,188	78,115	-3.3	-2.6
S Cen	10,605	10,152	11,363	7.1	11.9
West	310,711	354,720	352,917	13.6	-0.5

<sup>1</sup> Revised.

<sup>2</sup> States not shown when fewer than 3 plants reported or individual plant operations could be disclosed. Percent change shown only when comparable States are included in the calculation.

**Total Cheese Production United States**



**American Cheese: Production by State and United States, September 2005-2006**

State	Sep 2005	Aug <sup>1</sup> 2006	Sep 2006	Change From	
				Sep 2005	Aug 2006
	<i>1,000 Pounds</i>	<i>1,000 Pounds</i>	<i>1,000 Pounds</i>	<i>Percent</i>	<i>Percent</i>
CA	68,034	67,402	71,044	4.4	5.4
ID	47,171	50,584	47,666	1.0	-5.8
IA	9,425	9,017	8,366	-11.2	-7.2
MN	46,207	46,174	44,218	-4.3	-4.2
OH	2,993	3,164	2,741	-8.4	-13.4
OR	9,717	9,731	9,536	-1.9	-2.0
WI	68,012	62,237	64,200	-5.6	3.2
Oth Sts <sup>2</sup>	50,232	70,621	77,164	53.6	9.3
US	301,791	318,930	324,935	7.7	1.9
Atlantic	9,713	12,206	10,718	10.3	-12.2
E N Cen	71,824	65,942	67,622	-5.9	2.5
W N Cen	62,954	62,774	60,206	-4.4	-4.1
S Cen	3,837	2,614	3,924	2.3	50.1
West	153,463	175,394	182,465	18.9	4.0

<sup>1</sup> Revised.

<sup>2</sup> States not shown when fewer than 3 plants reported or individual plant operations could be disclosed. Percent change shown only when comparable States are included in the calculation.

**Cheddar Cheese: Production by State and United States, September 2005-2006**

State	Sep 2005	Aug <sup>1</sup> 2006	Sep 2006	Change From	
				Sep 2005	Aug 2006
	<i>1,000 Pounds</i>	<i>1,000 Pounds</i>	<i>1,000 Pounds</i>	<i>Percent</i>	<i>Percent</i>
CA	41,423	40,765	44,604	7.7	9.4
ID	43,091	46,790	43,550	1.1	-6.9
MN	41,347	41,119	39,287	-5.0	-4.5
OH	1,908	2,286	1,853	-2.9	-18.9
WI	52,733	47,509	50,200	-4.8	5.7
Oth Sts <sup>2</sup>	59,127	73,657	79,069	33.7	7.3
US	239,629	252,126	258,563	7.9	2.6
Atlantic	9,444	11,699	10,000	5.9	-14.5
E N Cen	54,664	49,811	52,075	-4.7	4.5
W N Cen	52,933	52,347	50,894	-3.9	-2.8
S Cen	3,836	2,613	3,923	2.3	50.1
West	118,752	135,656	141,671	19.3	4.4

<sup>1</sup> Revised.

<sup>2</sup> States not shown when fewer than 3 plants reported or individual plant operations could be disclosed. Percent change shown only when comparable States are included in the calculation.

**Italian Cheese, Total: Production by State and  
United States, September 2005-2006**

State	Sep 2005	Aug <sup>1</sup> 2006	Sep 2006	Change From	
				Sep 2005	Aug 2006
	<i>1,000 Pounds</i>	<i>1,000 Pounds</i>	<i>1,000 Pounds</i>	<i>Percent</i>	<i>Percent</i>
CA	92,162	104,402	98,070	6.4	-6.1
ID	11,669	13,394	12,072	3.5	-9.9
NY	30,837	31,918	31,606	2.5	-1.0
PA	19,027	18,351	17,350	-8.8	-5.5
SD	7,562	7,709	7,384	-2.4	-4.2
WI	91,694	96,022	99,107	8.1	3.2
Oth Sts <sup>2</sup>	57,388	61,206	58,235	1.5	-4.9
US <sup>3</sup>	310,339	333,002	323,824	4.3	-2.8
Atlantic	61,400	61,387	57,331	-6.6	-6.6
E N Cen	102,754	107,607	110,370	7.4	2.6
West	133,677	151,371	143,101	7.0	-5.5

<sup>1</sup> Revised.

<sup>2</sup> States not shown when fewer than 3 plants reported or individual plant operations could be disclosed. Percent change shown only when comparable States are included in the calculation.

<sup>3</sup> Region totals may not add to U.S. when compiled regions could not be disclosed.

**Mozzarella Cheese: Production by State and United States, September 2005-2006**

State	Sep 2005	Aug <sup>1</sup> 2006	Sep 2006	Change From	
				Sep 2005	Aug 2006
	<i>1,000 Pounds</i>	<i>1,000 Pounds</i>	<i>1,000 Pounds</i>	<i>Percent</i>	<i>Percent</i>
CA	79,801	92,458	89,680	12.4	-3.0
ID	9,946	11,786	10,510	5.7	-10.8
NY	14,788	15,909	15,068	1.9	-5.3
PA	15,797	15,443	14,956	-5.3	-3.2
WI	68,145	70,128	72,800	6.8	3.8
Oth Sts <sup>2</sup>	55,210	57,991	55,049	-0.3	-5.1
US <sup>3</sup>	243,687	263,715	258,063	5.9	-2.1
Atlantic	39,293	39,745	35,858	-8.7	-9.8
E N Cen	76,777	79,250	81,527	6.2	2.9
West	118,711	136,528	131,966	11.2	-3.3

<sup>1</sup> Revised.

<sup>2</sup> States not shown when fewer than 3 plants reported or individual plant operations could be disclosed. Percent change shown only when comparable States are included in the calculation.

<sup>3</sup> Region totals may not add to U.S. when compiled regions could not be disclosed.

**Butter: Production by State and United States, September 2005-2006**

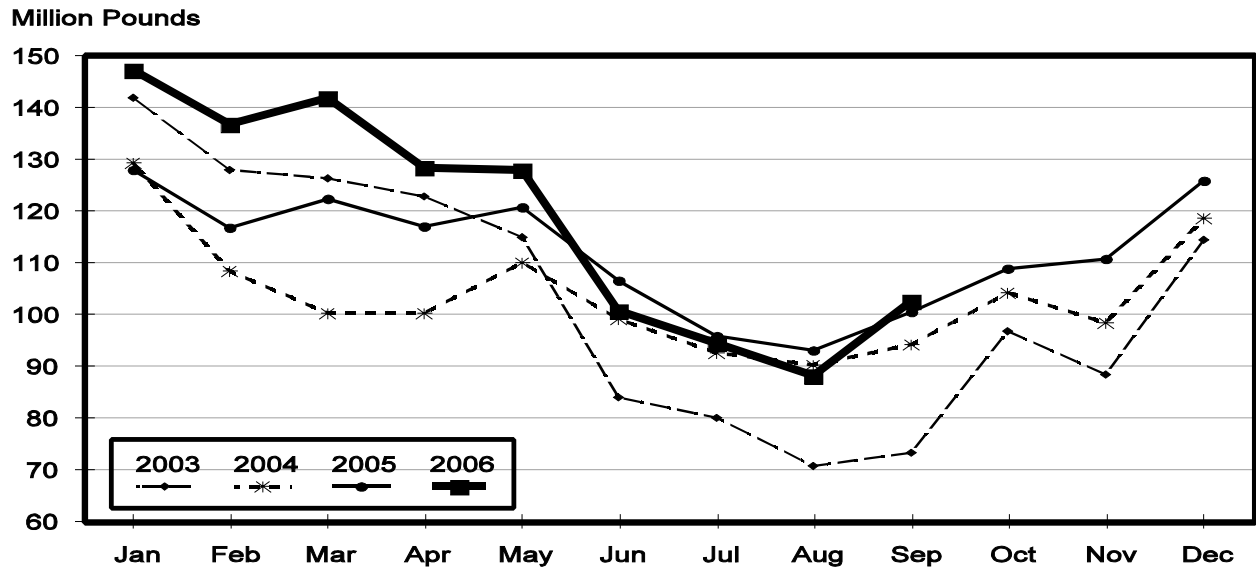
State	Sep 2005	Aug <sup>1</sup> 2006	Sep 2006	Change From	
				Sep 2005	Aug 2006
	<i>1,000 Pounds</i>	<i>1,000 Pounds</i>	<i>1,000 Pounds</i>	<i>Percent</i>	<i>Percent</i>
CA	35,295	31,674	34,880	-1.2	10.1
NY	1,078	688	971	-9.9	41.1
PA	5,653	1,822	4,829	-14.6	165.0
WI	26,169	22,159	26,900	2.8	21.4
Oth Sts <sup>2</sup>	32,452	31,982	35,121	8.2	9.8
US <sup>3</sup>	100,647	88,325	102,701	2.0	16.3
N Atl	8,289	3,235	6,715	-19.0	107.6
E N Cen	27,774	24,614	29,060	4.6	18.1
W N Cen	5,097	6,995	7,327	43.8	4.7
West	50,833	45,422	50,372	-0.9	10.9

<sup>1</sup> Revised.

<sup>2</sup> States not shown when fewer than 3 plants reported or individual plant operations could be disclosed. Percent change shown only when comparable States are included in the calculation.

<sup>3</sup> Region totals may not add to U.S. when compiled regions could not be disclosed.

## Total Butter Production United States





**Nonfat Dry Milk, Human: Production by State  
and United States, September 2005-2006**

State	Sep 2005	Aug <sup>1</sup> 2006	Sep 2006	Change From	
				Sep 2005	Aug 2006
	<i>1,000 Pounds</i>	<i>1,000 Pounds</i>	<i>1,000 Pounds</i>	<i>Percent</i>	<i>Percent</i>
CA	35,009	42,707	41,508	18.6	-2.8
PA	4,273	2,477	2,031	-52.5	-18.0
Oth Sts <sup>2</sup>	31,672	30,676	21,366	-32.5	-30.3
US <sup>3</sup>	70,954	75,860	64,905	-8.5	-14.4
Atlantic	7,088	4,307	3,250	-54.1	-24.5
E N Cen	3,067	3,342	2,320	-24.4	-30.6
W N Cen	2,441	4,006	3,021	23.8	-24.6
West	54,037	63,783	56,314	4.2	-11.7

<sup>1</sup> Revised.

<sup>2</sup> States not shown when fewer than 3 plants reported or individual plant operations could be disclosed. Percent change shown only when comparable States are included in the calculation.

<sup>3</sup> Region totals may not add to U.S. when compiled regions could not be disclosed.

**Dry Whey, Human: Production by State  
and United States, September 2005-2006**

State	Sep 2005	Aug <sup>1</sup> 2006	Sep 2006	Change From	
				Sep 2005	Aug 2006
	<i>1,000 Pounds</i>	<i>1,000 Pounds</i>	<i>1,000 Pounds</i>	<i>Percent</i>	<i>Percent</i>
CA	10,141	8,060	9,298	-8.3	15.4
MN	3,781	4,826	4,388	16.1	-9.1
NY	10,482	11,196	10,960	4.6	-2.1
WI	23,532	23,471	22,700	-3.5	-3.3
Oth Sts <sup>2</sup>	29,383	39,800	35,075	19.4	-11.9
US	77,319	87,353	82,421	6.6	-5.6
Atlantic	17,827	18,988	18,231	2.3	-4.0
Central	35,227	37,005	35,282	0.2	-4.7
West	24,265	31,360	28,908	19.1	-7.8

<sup>1</sup> Revised.

<sup>2</sup> States not shown when fewer than 3 plants reported or individual plant operations could be disclosed. Percent change shown only when comparable States are included in the calculation.

**Ice Cream, Hard: Production by State and United States, September 2005-2006**

State	Sep 2005	Aug <sup>1</sup> 2006	Sep 2006	Change From	
				Sep 2005	Aug 2006
	<i>1,000 Gallons</i>	<i>1,000 Gallons</i>	<i>1,000 Gallons</i>	<i>Percent</i>	<i>Percent</i>
CA	12,706	13,809	12,283	-3.3	-11.1
FL	1,512	1,600	1,500	-0.8	-6.3
IN	7,387	7,411	7,366	-0.3	-0.6
MD	1,551	1,918	1,467	-5.4	-23.5
MA	4,019	4,516	3,960	-1.5	-12.3
MN	3,857	4,164	3,311	-14.2	-20.5
MO	1,752	2,064	1,663	-5.1	-19.4
NY	2,461	2,356	2,231	-9.3	-5.3
OH	2,078	2,629	2,121	2.1	-19.3
OR	1,033	1,361	979	-5.2	-28.1
PA	2,947	4,123	3,392	15.1	-17.7
TN	1,285	1,722	1,406	9.4	-18.4
TX	4,449	5,820	4,777	7.4	-17.9
UT	2,268	2,589	1,932	-14.8	-25.4
Oth Sts <sup>2</sup>	23,054	28,695	24,339	5.6	-15.2
US	72,359	84,777	72,727	0.5	-14.2
N Atl	13,389	14,288	12,928	-3.4	-9.5
S Atl	5,464	6,501	5,430	-0.6	-16.5
E N Cen	14,187	16,059	14,617	3.0	-9.0
W N Cen	10,843	14,189	11,179	3.1	-21.2
S Cen	9,439	12,299	10,109	7.1	-17.8
West	19,037	21,441	18,464	-3.0	-13.9

<sup>1</sup> Revised.

<sup>2</sup> States not shown when fewer than 3 plants reported or individual plant operations could be disclosed. Percent change shown only when comparable States are included in the calculation.

**Canned Milk and Dry Milk Products: Manufacturers' Shipments,  
and Stocks, September, 2005-2006**

Product	Sep 2005	Aug 2006 <sup>1</sup>	Sep 2006	Change From	
				Sep 2005	Aug 2006
	<b>Manufacturers' Shipments <sup>2</sup></b>				
	<i>1,000 Pounds</i>	<i>1,000 Pounds</i>	<i>1,000 Pounds</i>	<i>Percent</i>	<i>Percent</i>
Nonfat Dry Milk, Human	79,823	94,896	70,355	-11.9	-25.9
	<b>Manufacturers' Stocks End-of-Month <sup>3</sup></b>				
	<i>1,000 Pounds</i>	<i>1,000 Pounds</i>	<i>1,000 Pounds</i>	<i>Percent</i>	<i>Percent</i>
Canned Evaporated and Condensed Whole Milk	69,886	93,990	86,883	24.3	-7.6
Nonfat Dry Milk, Human	94,674	56,453	41,401	-56.3	-26.7
Dry Buttermilk, Total	7,523	3,889	3,607	-52.1	-7.3

<sup>1</sup> Revised.

<sup>2</sup> For dry products, shipments of bulk goods only.

<sup>3</sup> Stocks held by manufacturers at all points and in transit.

**Procedures and Reliability:** Estimates included in this report are based on data provided each month by manufacturers of these products. In 32 States, the State Departments of Agriculture assist in collection of data, which eliminates duplicate reporting and reduces respondent burden. Data are collected by mail, personal and telephone interviews following the close of each month. There were 1,081 manufacturers that made one or more products in 2005. Each month, reports are generally received from all dairy plants in States with small numbers of plants. In States with large numbers of plants, survey procedures are designed to obtain monthly reports from all large plants and from a sample of small plants. Monthly estimates are based upon returns from about 70 percent of the plants which account for 70 to 90 percent of the total production of major dairy products.

**Revision Policy:** Monthly estimates are subject to revision the month following the preliminary estimates. Annual estimates are published in the "**Dairy Products**" report published each April which includes any revisions made to current and previous year. An attempt is made to get information from all plants for preparing these estimates

### Information Contacts

Listed below are the commodity specialists in the Livestock Branch of the National Agricultural Statistics Service to contact for additional information.

Dan Kerestes, Chief, Livestock Branch . . . . .	(202) 720-3570
William Weaver, Head, Livestock Section . . . . .	(202) 720-3570
Bruce Boess - Hogs and Pigs . . . . .	(202) 720-3106
Shawn Clark - Dairy Products . . . . .	(202) 690-3236
Jason Hardegree - Milk Production and Milk Cows . . . . .	(202) 720-3278
Scott Hollis - Sheep & Lambs, Goats . . . . .	(202) 720-4751
Mike Miller - Cattle, Cattle on Feed . . . . .	(202) 720-3040
Katy Paulsen - Livestock Slaughter . . . . .	(515) 284-4340
Charmaine Wilson - Dairy Products Prices . . . . .	(202) 690-2168

## ACCESS TO REPORTS!!

---

For your convenience, there are several ways to obtain NASS reports, data products, and services:

### INTERNET ACCESS

All NASS reports are available free of charge on the worldwide Internet. For access, connect to the Internet and go to the NASS Home Page at: [www.nass.usda.gov](http://www.nass.usda.gov).

### E-MAIL SUBSCRIPTION

All NASS reports are available by subscription free of charge direct to your e-mail address. Starting with the NASS Home Page at [www.nass.usda.gov](http://www.nass.usda.gov), under the right navigation, *Receive reports by Email*, click on **National** or **State**. Follow the instructions on the screen.

-----

### PRINTED REPORTS OR DATA PRODUCTS

**CALL OUR TOLL-FREE ORDER DESK: 800-999-6779 (U.S. and Canada)**  
**Other areas, please call 703-605-6220      FAX: 703-605-6900**  
**(Visa, MasterCard, check, or money order acceptable for payment.)**

-----

### ASSISTANCE

For **assistance** with general agricultural statistics or further information about NASS or its products or services, contact the **Agricultural Statistics Hotline** at **800-727-9540**, 7:30 a.m. to 4:00 p.m. ET, or e-mail: [nass@nass.usda.gov](mailto:nass@nass.usda.gov).

The U.S. Department of Agriculture (USDA) prohibits discrimination in all its programs and activities on the basis of race, color, national origin, age, disability, and where applicable, sex, marital status, familial status, parental status, religion, sexual orientation, genetic information, political beliefs, reprisal, or because all or part of an individual's income is derived from any public assistance program. (Not all prohibited bases apply to all programs.) Persons with disabilities who require alternative means for communication of program information (Braille, large print, audiotape, etc.) should contact USDA's TARGET Center at (202) 720-2600 (voice and TDD).

To file a complaint of discrimination, write to USDA, Director, Office of Civil Rights, 1400 Independence Avenue, S.W., Washington, D.C. 20250-9410, or call (800) 795-3272 (voice) or (202) 720-6382 (TDD). USDA is an equal opportunity provider and employer.