



# NASS

FACT FINDERS FOR AGRICULTURE  
UNITED STATES DEPARTMENT OF AGRICULTURE

Washington, D.C.

# Dairy Products

---

Released December 1, 2006, by the National Agricultural Statistics Service (NASS), Agricultural Statistics Board, U.S. Department of Agriculture. For information on *Dairy Products* call Shawn Clark at (202) 690-3236, office hours 7:30 a.m. to 4:00 p.m. ET.

## October 2006 Highlights

**Total cheese** output (excluding cottage cheese) was 800 million pounds, 5.2 percent above October 2005 and 2.0 percent above September 2006.

**Italian type cheese** production totaled 334 million pounds, 7.2 percent above October 2005 and 3.3 percent above September 2006.

**American type cheese** production totaled 321 million pounds, 2.8 percent above October 2005 but 1.3 percent below September 2006.

**Butter** production was 118 million pounds, 8.5 percent above October 2005 and 13.9 percent above September 2006.

**Frozen dessert:** (comparisons with October 2005)

Ice cream, Regular (hard) --- 64.3 million gallons, down 8.0 percent.

Ice cream, Lowfat (total) --- 29.8 million gallons, up 10.5 percent.

Ice cream, Nonfat (hard) --- 1.02 million gallons, down 34.0 percent.

Sherbet (hard) --- 3.69 million gallons, down 1 percent.

Frozen Yogurt (total) --- 4.92 million gallons, down 3.9 percent.

**Nonfat dry milk for human food:** (compared with October 2005) --- 72.7 million pounds, down 1.2 percent.

**Dry whey products:** (comparisons with October 2005)

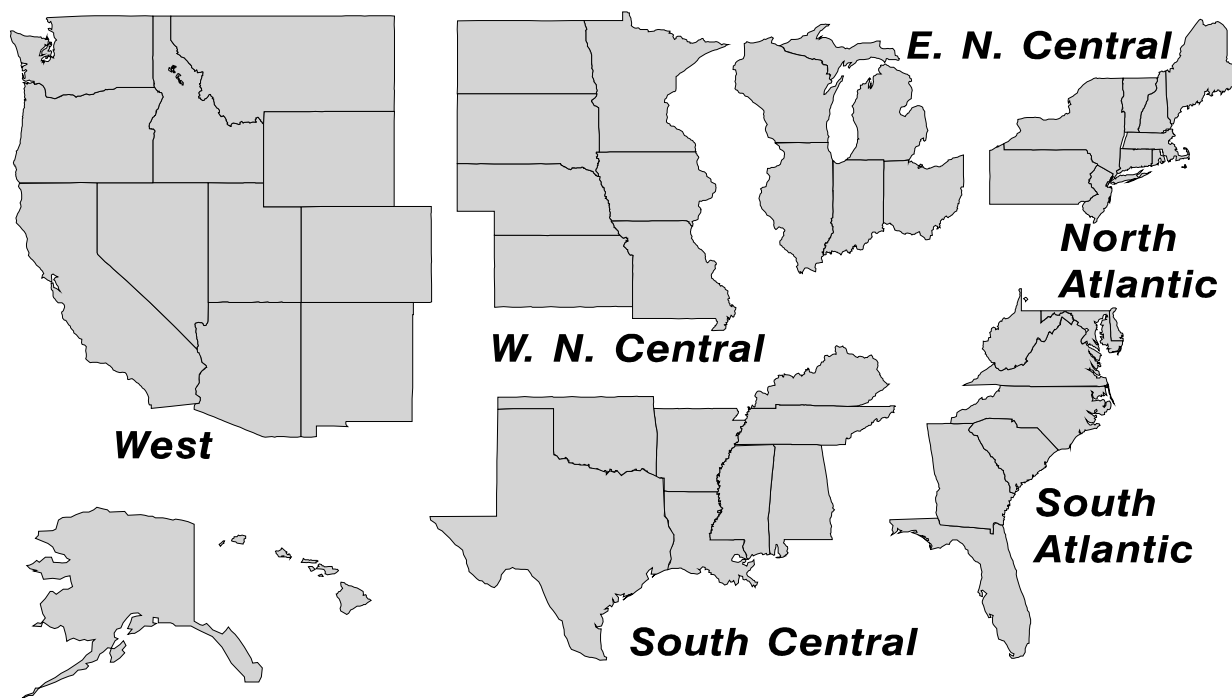
Dry whey, human --- 83.7 million pounds, up 10.4 percent.

Dry whey, animal --- 3.23 million pounds, down 49.2 percent.

Dry whey, total --- 86.9 million pounds, up 5.7 percent.

## U. S. Geographic Regions Dairy Products

If we are not able to publish a region for confidentiality reasons, it will be combined with other regions when possible. For example, if North Atlantic can not be published, then it will be combined with South Atlantic to publish Atlantic. The West North Central and East North Central will be combined, if necessary, to form North Central. In the event that neither could be published, they may be combined with South Central to publish Central. Some tables will have only limited regions shown, therefore the regions may not add to the United States total.



## Contents

## Page

Dairy Products: Production by Product, United States .....	1
Whey and Modified Whey Products: Production, Stocks, and Prices, United States .....	2
Dairy Products: Production by Product and Month, United States .....	3
Select Commodities by State and United States .....	10
Canned Milk and Dry Milk Products: Manufacturer's Shipments, Stocks, and Selling Prices .....	15
Procedures and Reliability .....	16
Information Contacts .....	16

**Dairy Products: Production by Product,  
United States, October, 2005-2006**

Product	Oct 2005	Sep 2006 <sup>1</sup>	Oct 2006	Change From	
				Oct 2005	Sep 2006
	<i>1,000 Pounds</i>	<i>1,000 Pounds</i>	<i>1,000 Pounds</i>	<i>Percent</i>	<i>Percent</i>
Butter	108,915	103,771	118,172	8.5	13.9
Cheese					
American Types <sup>2</sup>	312,321	325,166	320,978	2.8	-1.3
Cheddar	248,910	258,688	250,630	0.7	-3.1
Swiss	24,954	24,047	25,547	2.4	6.2
Brick and Muenster	8,370	8,101	8,960	7.0	10.6
Cream and Neufchatel	67,093	66,573	72,052	7.4	8.2
Hispanic	14,689	15,529	14,581	-0.7	-6.1
Mozzarella	243,671	257,598	263,419	8.1	2.3
Other Italian Types	68,230	65,978	70,951	4.0	7.5
Total Italian Types	311,901	323,576	334,370	7.2	3.3
All Other Types	21,079	21,284	23,736	12.6	11.5
Total	760,407	784,276	800,224	5.2	2.0
Cottage Cheese, Curd <sup>3</sup>	38,017	39,547	38,806	2.1	-1.9
Cottage Cheese, Cream <sup>4</sup>	30,269	30,703	30,192	-0.3	-1.7
Cottage Cheese, Lowfat <sup>5</sup>	32,642	33,452	32,318	-1.0	-3.4
Canned Evaporated and Condensed Whole Milk	42,757	44,434	40,909	-4.3	-7.9
Dry Whole Milk	2,318	2,334	1,994	-14.0	-14.6
Nonfat Dry Milk, Human Skim Milk Powders <sup>6</sup>	73,554	64,888	72,653	-1.2	12.0
Dry Skim Milk, Animal	415	314	354	-14.7	12.7
Dry Buttermilk	5,101	4,093	4,890	-4.1	19.5
Sour Cream	90,019	85,154	98,613	9.5	15.8
Yogurt, Plain & Flavored	249,329	267,407	259,505	4.1	-3.0
	<i>1,000 Gallons</i>	<i>1,000 Gallons</i>	<i>1,000 Gallons</i>	<i>Percent</i>	<i>Percent</i>
Frozen Products					
Ice Cream, Regular, Hard	69,862	72,705	64,299	-8.0	-11.6
Ice Cream, Lowfat, Hard	8,651	10,931	10,079	16.5	-7.8
Ice Cream, Lowfat, Soft	18,362	19,931	19,770	7.7	-0.8
Ice Cream, Lowfat, Total	27,013	30,862	29,849	10.5	-3.3
Ice Cream, Nonfat, Hard	1,538	1,018	1,015	-34.0	-0.3
Sherbet, Hard	3,724	3,824	3,690	-0.9	-3.5
Water and Juice Ices	4,494	4,810	3,928	-12.6	-18.3
Frozen Yogurt, Total	5,114	5,145	4,917	-3.9	-4.4
Regular & Lowfat, Hard	1,384	1,391	1,222	-11.7	-12.1
Nonfat, Hard	913	954	829	-9.2	-13.1
Other Frozen Dairy Products	498	860	926	85.9	7.7
Mix for Frozen Products					
Ice Cream Mix	38,193	39,388	35,785	-6.3	-9.1
Ice Cream, Lowfat, Mix	15,414	17,688	17,143	11.2	-3.1
Ice Cream, Nonfat, Mix	981	642	649	-33.8	1.1
Sherbet Mix	2,696	2,721	2,576	-4.5	-5.3
Yogurt Mix	3,032	3,118	2,980	-1.7	-4.4

<sup>1</sup> Revised.

<sup>2</sup> Includes Cheddar, Colby, Monterey, and Jack.

<sup>3</sup> Mostly used for processing into cream or lowfat cottage cheese.

<sup>4</sup> Fat content 4 percent or more.

<sup>5</sup> Fat content less than 4 percent.

<sup>6</sup> Includes protein standardized and blends.

**Whey and Modified Whey Products: Production, Stocks,  
and Prices, United States, October, 2005-2006**

Product	Oct 2005	Sep 2006 <sup>1</sup>	Oct 2006	Change From	
				Oct 2005	Sep 2006
<b>Production</b>					
	<i>1,000 Pounds</i>	<i>1,000 Pounds</i>	<i>1,000 Pounds</i>	<i>Percent</i>	<i>Percent</i>
Condensed Whey, Solids Content <sup>2</sup>					
Sweet-Type, Human	5,497	8,274	8,141	48.1	-1.6
Dry Whey Products					
Dry Whey, Human	75,823	82,218	83,673	10.4	1.8
Dry Whey, Animal	6,363	3,979	3,231	-49.2	-18.8
Dry Whey, Total	82,186	86,197	86,904	5.7	0.8
Reduced Lactose and Minerals					
Human Food	2,687	3,690	4,096	52.4	11.0
Animal Feed	3,904	3,591	3,820	-2.2	6.4
Lactose, Human and Animal	50,861	56,308	62,248	22.4	10.5
Whey					
Protein Concentrate					
Human <sup>3</sup>	28,036	29,269	29,401	4.9	0.5
Animal <sup>3</sup>	4,044	4,342	4,763	17.8	9.7
Total <sup>3</sup>	32,080	33,611	34,164	6.5	1.6
25.0-49.9 Percent <sup>4</sup>	22,880	22,737	23,362	2.1	2.7
50.0-89.9 Percent <sup>4</sup>	9,200	10,874	10,802	17.4	-0.7
Protein Isolates <sup>5</sup>	2,176	2,551	2,741	26.0	7.4
<b>Manufacturers' Stocks End-of-Month <sup>6</sup></b>					
	<i>1,000 Pounds</i>	<i>1,000 Pounds</i>	<i>1,000 Pounds</i>	<i>Percent</i>	<i>Percent</i>
Dry Whey Products					
Dry Whey, Human	33,049	32,648	30,901	-6.5	-5.4
Dry Whey, Animal	3,939	1,811	1,574	-60.0	-13.1
Dry Whey, Total	36,988	34,459	32,475	-12.2	-5.8
Reduced Lactose and Minerals					
Human and Animal <sup>7</sup>	3,393	4,338	4,485	32.2	3.4
Lactose, Human and Animal	50,970	43,742	39,177	-23.1	-10.4
Whey					
Protein Concentrate					
Human <sup>3</sup>	23,662	26,055	24,638	4.1	-5.4
Animal <sup>3</sup>	2,482	2,400	2,541	2.4	5.9
Total <sup>3</sup>	26,144	28,455	27,179	4.0	-4.5
25.0-49.9 Percent <sup>4</sup>	16,623	17,478	16,820	1.2	-3.8
50.0-89.9 Percent <sup>4</sup>	9,521	10,977	10,359	8.8	-5.6
<b>Manufacturers' Selling Price <sup>8</sup></b>					
	<i>Cents per Pound</i>	<i>Cents per Pound</i>	<i>Cents per Pound</i>	<i>Cents Change</i>	<i>Cents Change</i>
Dry Whey, Animal	27.9	30.0	33.4	5.5	3.4

<sup>1</sup> Revised.

<sup>2</sup> Final marketable product only. Does not include quantity used or shipped to another plant for further processing into dry whey or modified whey products. Does not include sweet-type, animal whey.

<sup>3</sup> Whey Protein Concentrate, 25.0 to 89.9 percent.

<sup>4</sup> Whey Protein Concentrate, Human and Animal.

<sup>5</sup> Whey Protein Isolate, 90.0 percent or greater.

<sup>6</sup> Stocks held by manufacturers at all points and in transit.

<sup>7</sup> Reduced lactose and minerals stocks combined to avoid disclosure of individual operations.

<sup>8</sup> Prices for bulk goods, f.o.b. plant. Average monthly prices reported by firms.

**Dairy Products: Production by Product and Month,  
United States, 2005-2006 <sup>1</sup>**

Product and Month	By Month			Cumulative		
	2005	2006	Change From 2005	2005	2006	Change From 2005
	<i>1,000 Pounds</i>	<i>1,000 Pounds</i>	<i>Percent</i>	<i>1,000 Pounds</i>	<i>1,000 Pounds</i>	<i>Percent</i>
<b>Total Cheese</b>						
Jan	753,967	772,337	2.4	753,967	772,337	2.4
Feb	704,633	720,978	2.3	1,458,600	1,493,315	2.4
Mar	797,511	812,634	1.9	2,256,111	2,305,949	2.2
Apr	754,849	786,477	4.2	3,010,960	3,092,426	2.7
May	783,943	811,591	3.5	3,794,903	3,904,017	2.9
Jun	764,468	793,937	3.9	4,559,371	4,697,954	3.0
Jul	739,472	767,436	3.8	5,298,843	5,465,390	3.1
Aug	757,402	788,908	4.2	6,056,245	6,254,298	3.3
Sep	745,485	784,276	5.2	6,801,730	7,038,574	3.5
Oct	760,407	800,224	5.2	7,562,137	7,838,798	3.7
Nov	766,061			8,328,198		
Dec	798,909			9,127,107		
<b>American Cheese</b>						
Jan	322,332	324,545	0.7	322,332	324,545	0.7
Feb	292,238	304,376	4.2	614,570	628,921	2.3
Mar	331,468	338,383	2.1	946,038	967,304	2.2
Apr	327,575	338,715	3.4	1,273,613	1,306,019	2.5
May	332,501	346,512	4.2	1,606,114	1,652,531	2.9
Jun	321,389	337,024	4.9	1,927,503	1,989,555	3.2
Jul	315,977	328,226	3.9	2,243,480	2,317,781	3.3
Aug	312,028	318,930	2.2	2,555,508	2,636,711	3.2
Sep	301,791	325,166	7.7	2,857,299	2,961,877	3.7
Oct	312,321	320,978	2.8	3,169,620	3,282,855	3.6
Nov	313,195			3,482,815		
Dec	330,135			3,812,950		
<b>Cheddar Cheese</b>						
Jan	261,868	265,809	1.5	261,868	265,809	1.5
Feb	237,987	246,344	3.5	499,855	512,153	2.5
Mar	268,668	270,553	0.7	768,523	782,706	1.8
Apr	262,787	273,664	4.1	1,031,310	1,056,370	2.4
May	265,569	275,298	3.7	1,296,879	1,331,668	2.7
Jun	258,211	268,350	3.9	1,555,090	1,600,018	2.9
Jul	252,709	267,088	5.7	1,807,799	1,867,106	3.3
Aug	245,144	252,126	2.8	2,052,943	2,119,232	3.2
Sep	239,629	258,688	8.0	2,292,572	2,377,920	3.7
Oct	248,910	250,630	0.7	2,541,482	2,628,550	3.4
Nov	248,464			2,789,946		
Dec	262,469			3,052,415		

See footnote(s) at end of table.

--continued

**Dairy Products: Production by Product and Month,  
United States, 2005-2006 <sup>1</sup> (continued)**

Product and Month	By Month			Cumulative		
	2005	2006	Change From 2005	2005	2006	Change From 2005
	<i>1,000 Pounds</i>	<i>1,000 Pounds</i>	<i>Percent</i>	<i>1,000 Pounds</i>	<i>1,000 Pounds</i>	<i>Percent</i>
Italian Cheese						
Jan	316,288	328,315	3.8	316,288	328,315	3.8
Feb	299,673	307,623	2.7	615,961	635,938	3.2
Mar	338,682	346,179	2.2	954,643	982,117	2.9
Apr	310,719	328,588	5.8	1,265,362	1,310,705	3.6
May	327,196	335,577	2.6	1,592,558	1,646,282	3.4
Jun	319,049	326,014	2.2	1,911,607	1,972,296	3.2
Jul	303,054	318,197	5.0	2,214,661	2,290,493	3.4
Aug	311,518	333,002	6.9	2,526,179	2,623,495	3.9
Sep	310,339	323,576	4.3	2,836,518	2,947,071	3.9
Oct	311,901	334,370	7.2	3,148,419	3,281,441	4.2
Nov	320,304			3,468,723		
Dec	336,007			3,804,730		
Mozzarella						
Jan	250,595	259,574	3.6	250,595	259,574	3.6
Feb	239,382	242,804	1.4	489,977	502,378	2.5
Mar	269,830	273,870	1.5	759,807	776,248	2.2
Apr	247,184	261,653	5.9	1,006,991	1,037,901	3.1
May	262,238	267,474	2.0	1,269,229	1,305,375	2.8
Jun	255,540	261,675	2.4	1,524,769	1,567,050	2.8
Jul	243,304	254,757	4.7	1,768,073	1,821,807	3.0
Aug	244,631	263,715	7.8	2,012,704	2,085,522	3.6
Sep	243,687	257,598	5.7	2,256,391	2,343,120	3.8
Oct	243,671	263,419	8.1	2,500,062	2,606,539	4.3
Nov	252,933			2,752,995		
Dec	267,803			3,020,798		
Other Italian						
Jan	65,693	68,741	4.6	65,693	68,741	4.6
Feb	60,291	64,819	7.5	125,984	133,560	6.0
Mar	68,852	72,309	5.0	194,836	205,869	5.7
Apr	63,535	66,935	5.4	258,371	272,804	5.6
May	64,958	68,103	4.8	323,329	340,907	5.4
Jun	63,509	64,339	1.3	386,838	405,246	4.8
Jul	59,750	63,440	6.2	446,588	468,686	4.9
Aug	66,887	69,287	3.6	513,475	537,973	4.8
Sep	66,652	65,978	-1.0	580,127	603,951	4.1
Oct	68,230	70,951	4.0	648,357	674,902	4.1
Nov	67,371			715,728		
Dec	68,204			783,932		

See footnote(s) at end of table.

--continued

**Dairy Products: Production by Product and Month,  
United States, 2005-2006 <sup>1</sup> (continued)**

Product and Month	By Month			Cumulative		
	2005	2006	Change From 2005	2005	2006	Change From 2005
	<i>1,000 Pounds</i>	<i>1,000 Pounds</i>	<i>Percent</i>	<i>1,000 Pounds</i>	<i>1,000 Pounds</i>	<i>Percent</i>
Butter						
Jan	128,020	147,251	15.0	128,020	147,251	15.0
Feb	116,927	136,953	17.1	244,947	284,204	16.0
Mar	122,402	141,993	16.0	367,349	426,197	16.0
Apr	117,061	128,457	9.7	484,410	554,654	14.5
May	120,715	128,126	6.1	605,125	682,780	12.8
Jun	106,559	100,779	-5.4	711,684	783,559	10.1
Jul	95,929	94,567	-1.4	807,613	878,126	8.7
Aug	93,194	88,325	-5.2	900,807	966,451	7.3
Sep	100,647	103,771	3.1	1,001,454	1,070,222	6.9
Oct	108,915	118,172	8.5	1,110,369	1,188,394	7.0
Nov	110,905			1,221,274		
Dec	125,953			1,347,227		
Nonfat Dry Milk, Human						
Jan	93,261	107,254	15.0	93,261	107,254	15.0
Feb	97,275	117,466	20.8	190,536	224,720	17.9
Mar	109,299	128,269	17.4	299,835	352,989	17.7
Apr	104,876	129,225	23.2	404,711	482,214	19.2
May	124,329	132,262	6.4	529,040	614,476	16.1
Jun	124,206	117,049	-5.8	653,246	731,525	12.0
Jul	108,865	88,227	-19.0	762,111	819,752	7.6
Aug	86,679	75,860	-12.5	848,790	895,612	5.5
Sep	70,954	64,888	-8.5	919,744	960,500	4.4
Oct	73,554	72,653	-1.2	993,298	1,033,153	4.0
Nov	89,095			1,082,393		
Dec	103,711			1,186,104		
Total Dry Whey <sup>2</sup>						
Jan	85,936	88,243	2.7	85,936	88,243	2.7
Feb	79,665	89,713	12.6	165,601	177,956	7.5
Mar	91,775	101,239	10.3	257,376	279,195	8.5
Apr	91,260	96,339	5.6	348,636	375,534	7.7
May	94,083	97,119	3.2	442,719	472,653	6.8
Jun	89,357	90,168	0.9	532,076	562,821	5.8
Jul	89,143	90,348	1.4	621,219	653,169	5.1
Aug	87,438	92,057	5.3	708,657	745,226	5.2
Sep	83,948	86,197	2.7	792,605	831,423	4.9
Oct	82,186	86,904	5.7	874,791	918,327	5.0
Nov	84,844			959,635		
Dec	86,187			1,045,822		

See footnote(s) at end of table.

--continued



**Dairy Products: Production by Product and Month,  
United States, 2005-2006 <sup>1</sup> (continued)**

Product and Month	By Month			Cumulative		
	2005	2006	Change From 2005	2005	2006	Change From 2005
	<i>1,000 Pounds</i>	<i>1,000 Pounds</i>	<i>Percent</i>	<i>1,000 Pounds</i>	<i>1,000 Pounds</i>	<i>Percent</i>
<b>Cream Cottage Cheese</b>						
Jan	29,553	27,785	-6.0	29,553	27,785	-6.0
Feb	27,833	27,193	-2.3	57,386	54,978	-4.2
Mar	32,682	32,115	-1.7	90,068	87,093	-3.3
Apr	30,623	28,580	-6.7	120,691	115,673	-4.2
May	31,463	31,383	-0.3	152,154	147,056	-3.4
Jun	32,266	31,096	-3.6	184,420	178,152	-3.4
Jul	31,938	29,114	-8.8	216,358	207,266	-4.2
Aug	33,782	34,975	3.5	250,140	242,241	-3.2
Sep	33,011	30,703	-7.0	283,151	272,944	-3.6
Oct	30,269	30,192	-0.3	313,420	303,136	-3.3
Nov	28,679			342,099		
Dec	26,058			368,157		
<b>Lowfat Cottage Cheese</b>						
Jan	30,843	31,617	2.5	30,843	31,617	2.5
Feb	32,060	30,818	-3.9	62,903	62,435	-0.7
Mar	35,064	35,940	2.5	97,967	98,375	0.4
Apr	32,706	31,668	-3.2	130,673	130,043	-0.5
May	34,904	35,108	0.6	165,577	165,151	-0.3
Jun	35,362	33,458	-5.4	200,939	198,609	-1.2
Jul	32,436	32,960	1.6	233,375	231,569	-0.8
Aug	35,568	37,512	5.5	268,943	269,081	0.1
Sep	34,506	33,452	-3.1	303,449	302,533	-0.3
Oct	32,642	32,318	-1.0	336,091	334,851	-0.4
Nov	31,406			367,497		
Dec	28,574			396,071		
	<i>1,000 Gallons</i>	<i>1,000 Gallons</i>	<i>Percent</i>	<i>1,000 Gallons</i>	<i>1,000 Gallons</i>	<i>Percent</i>
<b>Ice Cream, Regular, Hard</b>						
Jan	62,103	61,826	-0.4	62,103	61,826	-0.4
Feb	65,827	62,916	-4.4	127,930	124,742	-2.5
Mar	78,753	77,869	-1.1	206,683	202,611	-2.0
Apr	78,091	77,408	-0.9	284,774	280,019	-1.7
May	78,375	82,128	4.8	363,149	362,147	-0.3
Jun	91,190	87,898	-3.6	454,339	450,045	-0.9
Jul	87,054	85,374	-1.9	541,393	535,419	-1.1
Aug	89,142	84,777	-4.9	630,535	620,196	-1.6
Sep	72,359	72,705	0.5	702,894	692,901	-1.4
Oct	69,862	64,299	-8.0	772,756	757,200	-2.0
Nov	61,133			833,889		
Dec	54,854			888,743		

See footnote(s) at end of table.

--continued

**Dairy Products: Production by Product and Month,  
United States, 2005-2006 <sup>1</sup> (continued)**

Product and Month	By Month			Cumulative		
	2005	2006	Change From 2005	2005	2006	Change From 2005
	<i>1,000 Gallons</i>	<i>1,000 Gallons</i>	<i>Percent</i>	<i>1,000 Gallons</i>	<i>1,000 Gallons</i>	<i>Percent</i>
<b>Ice Cream, Lowfat</b>						
Jan	24,199	25,444	5.1	24,199	25,444	5.1
Feb	26,181	24,134	-7.8	50,380	49,578	-1.6
Mar	32,927	31,475	-4.4	83,307	81,053	-2.7
Apr	33,192	32,054	-3.4	116,499	113,107	-2.9
May	33,123	37,226	12.4	149,622	150,333	0.5
Jun	38,572	41,999	8.9	188,194	192,332	2.2
Jul	36,928	36,919		225,122	229,251	1.8
Aug	35,592	37,658	5.8	260,714	266,909	2.4
Sep	30,745	30,862	0.4	291,459	297,771	2.2
Oct	27,013	29,849	10.5	318,472	327,620	2.9
Nov	23,770			342,242		
Dec	21,726			363,968		
<b>Ice Cream, NF, Hard</b>						
Jan	1,205	1,330	10.4	1,205	1,330	10.4
Feb	1,715	1,254	-26.9	2,920	2,584	-11.5
Mar	1,686	1,607	-4.7	4,606	4,191	-9.0
Apr	1,682	1,324	-21.3	6,288	5,515	-12.3
May	1,730	1,486	-14.1	8,018	7,001	-12.7
Jun	1,923	1,402	-27.1	9,941	8,403	-15.5
Jul	2,188	1,349	-38.3	12,129	9,752	-19.6
Aug	1,910	1,358	-28.9	14,039	11,110	-20.9
Sep	1,611	1,018	-36.8	15,650	12,128	-22.5
Oct	1,538	1,015	-34.0	17,188	13,143	-23.5
Nov	1,319			18,507		
Dec	1,153			19,660		
<b>Sherbet, Hard</b>						
Jan	3,838	3,893	1.4	3,838	3,893	1.4
Feb	4,036	4,173	3.4	7,874	8,066	2.4
Mar	4,924	4,582	-6.9	12,798	12,648	-1.2
Apr	5,111	4,557	-10.8	17,909	17,205	-3.9
May	4,934	4,791	-2.9	22,843	21,996	-3.7
Jun	5,825	5,210	-10.6	28,668	27,206	-5.1
Jul	5,425	4,898	-9.7	34,093	32,104	-5.8
Aug	5,632	4,777	-15.2	39,725	36,881	-7.2
Sep	4,953	3,824	-22.8	44,678	40,705	-8.9
Oct	3,724	3,690	-0.9	48,402	44,395	-8.3
Nov	3,442			51,844		
Dec	3,436			55,280		

See footnote(s) at end of table.

--continued

**Dairy Products: Production by Product and Month,  
United States, 2005-2006 <sup>1</sup> (continued)**

Product and Month	By Month			Cumulative		
	2005	2006	Change From 2005	2005	2006	Change From 2005
	<i>1,000 Pounds</i>	<i>1,000 Pounds</i>	<i>Percent</i>	<i>1,000 Pounds</i>	<i>1,000 Pounds</i>	<i>Percent</i>
Sour Cream						
Jan	76,976	81,288	5.6	76,976	81,288	5.6
Feb	73,791	76,832	4.1	150,767	158,120	4.9
Mar	87,637	89,000	1.6	238,404	247,120	3.7
Apr	72,323	79,298	9.6	310,727	326,418	5.0
May	86,250	91,426	6.0	396,977	417,844	5.3
Jun	85,798	89,599	4.4	482,775	507,443	5.1
Jul	79,324	84,064	6.0	562,099	591,507	5.2
Aug	90,935	97,363	7.1	653,034	688,870	5.5
Sep	79,208	85,154	7.5	732,242	774,024	5.7
Oct	90,019	98,613	9.5	822,261	872,637	6.1
Nov	108,466			930,727		
Dec	99,090			1,029,817		

See footnote(s) at end of table.

--continued

**Dairy Products: Production by Product and Month,  
United States, 2005-2006 <sup>1</sup> (continued)**

Product and Month	By Month			Cumulative		
	2005	2006	Change From 2005	2005	2006	Change From 2005
	<i>1,000 Pounds</i>	<i>1,000 Pounds</i>	<i>Percent</i>	<i>1,000 Pounds</i>	<i>1,000 Pounds</i>	<i>Percent</i>
Yogurt						
Jan	224,187	252,353	12.6	224,187	252,353	12.6
Feb	236,193	238,108	0.8	460,380	490,461	6.5
Mar	275,949	280,577	1.7	736,329	771,038	4.7
Apr	247,409	254,096	2.7	983,738	1,025,134	4.2
May	264,459	267,283	1.1	1,248,197	1,292,417	3.5
Jun	263,178	272,551	3.6	1,511,375	1,564,968	3.5
Jul	244,608	255,765	4.6	1,755,983	1,820,733	3.7
Aug	265,359	283,584	6.9	2,021,342	2,104,317	4.1
Sep	273,643	267,407	-2.3	2,294,985	2,371,724	3.3
Oct	249,329	259,505	4.1	2,544,314	2,631,229	3.4
Nov	219,567			2,763,881		
Dec	225,908			2,989,789		

See footnote(s) at end of table.

--continued

**Dairy Products: Production by Product and Month,  
United States, 2005-2006 <sup>1</sup> (continued)**

Product and Month	By Month			Cumulative		
	2005	2006	Change From 2005	2005	2006	Change From 2005
	<i>1,000 Gallons</i>	<i>1,000 Gallons</i>	<i>Percent</i>	<i>1,000 Gallons</i>	<i>1,000 Gallons</i>	<i>Percent</i>
Frozen Yogurt						
Jan	4,353	4,131	-5.1	4,353	4,131	-5.1
Feb	4,910	4,524	-7.9	9,263	8,655	-6.6
Mar	5,942	6,044	1.7	15,205	14,699	-3.3
Apr	5,737	5,960	3.9	20,942	20,659	-1.4
May	6,239	6,663	6.8	27,181	27,322	0.5
Jun	6,412	6,882	7.3	33,593	34,204	1.8
Jul	5,867	6,240	6.4	39,460	40,444	2.5
Aug	6,142	6,852	11.6	45,602	47,296	3.7
Sep	5,456	5,145	-5.7	51,058	52,441	2.7
Oct	5,114	4,917	-3.9	56,172	57,358	2.1
Nov	4,419			60,591		
Dec	4,460			65,051		

<sup>1</sup> September 2006 data revised.

<sup>2</sup> Excludes all modified dry whey products.

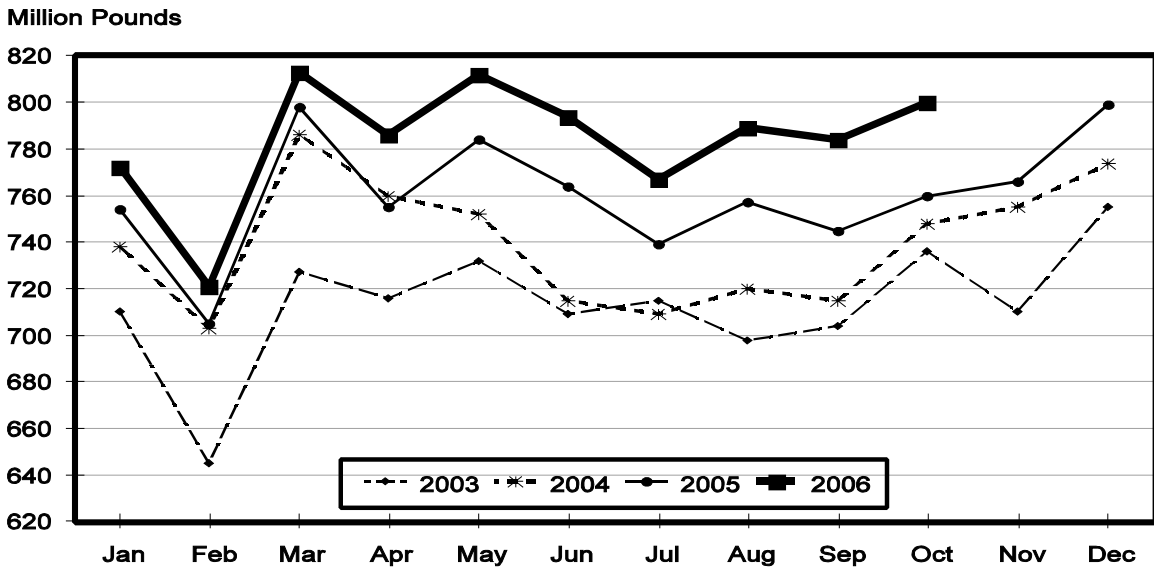
**Total Cheese, Excluding Cottage Cheese: Production by State and United States, October 2005-2006**

State	Oct 2005	Sep <sup>1</sup> 2006	Oct 2006	Change From	
				Oct 2005	Sep 2006
	<i>1,000 Pounds</i>	<i>1,000 Pounds</i>	<i>1,000 Pounds</i>	<i>Percent</i>	<i>Percent</i>
CA	176,104	185,232	188,303	6.9	1.7
ID	67,776	66,548	69,265	2.2	4.1
IL	7,884	6,402	6,523	-17.3	1.9
IA	12,503	11,057	11,416	-8.7	3.2
MN	51,234	47,026	49,579	-3.2	5.4
NM		53,191	50,207		-5.6
NY	59,773	60,442	63,831	6.8	5.6
OH	17,403	15,870	17,251	-0.9	8.7
PA	32,412	28,928	29,483	-9.0	1.9
SD	14,326	14,548	14,438	0.8	-0.8
UT	5,870	5,819	5,821	-0.8	
WI	201,836	204,196	205,408	1.8	0.6
Oth Sts <sup>2</sup>	113,286	85,017	88,699		4.3
US	760,407	784,276	800,224	5.2	2.0
N Atl	105,647	102,931	107,565	1.8	4.5
S Atl	3,820	3,015	3,091	-19.1	2.5
E N Cen	237,505	236,326	240,185	1.1	1.6
W N Cen	83,864	78,078	82,278	-1.9	5.4
S Cen	8,565	10,690	10,290	20.1	-3.7
West	321,006	353,236	356,815	11.2	1.0

<sup>1</sup> Revised.

<sup>2</sup> States not shown when fewer than 3 plants reported or individual plant operations could be disclosed. Percent change shown only when comparable States are included in the calculation.

**Total Cheese Production United States**



**American Cheese: Production by State and United States, October 2005-2006**

State	Oct 2005	Sep <sup>1</sup> 2006	Oct 2006	Change From	
				Oct 2005	Sep 2006
	<i>1,000 Pounds</i>	<i>1,000 Pounds</i>	<i>1,000 Pounds</i>	<i>Percent</i>	<i>Percent</i>
CA	70,337	71,044	67,933	-3.4	-4.4
ID	48,193	47,666	49,881	3.5	4.6
IA	9,594	8,366	8,492	-11.5	1.5
MN	48,680	44,152	47,131	-3.2	6.7
OH	3,459	2,827	2,925	-15.4	3.5
OR	9,847	9,536	10,086	2.4	5.8
WI	68,279	64,381	62,700	-8.2	-2.6
Oth Sts <sup>2</sup>	53,932	77,194	71,830	33.2	-6.9
US	312,321	325,166	320,978	2.8	-1.3
Atlantic	10,496	10,719	12,599	20.0	17.5
E N Cen	72,721	67,889	66,608	-8.4	-1.9
W N Cen	65,764	60,169	63,215	-3.9	5.1
S Cen	2,791	3,924	2,900	3.9	-26.1
West	160,549	182,465	175,656	9.4	-3.7

<sup>1</sup> Revised.

<sup>2</sup> States not shown when fewer than 3 plants reported or individual plant operations could be disclosed. Percent change shown only when comparable States are included in the calculation.

**Cheddar Cheese: Production by State and United States, October 2005-2006**

State	Oct 2005	Sep <sup>1</sup> 2006	Oct 2006	Change From	
				Oct 2005	Sep 2006
	<i>1,000 Pounds</i>	<i>1,000 Pounds</i>	<i>1,000 Pounds</i>	<i>Percent</i>	<i>Percent</i>
CA	41,662	44,604	36,720	-11.9	-17.7
ID	43,289	43,550	45,776	5.7	5.1
MN	44,837	39,221	43,251	-3.5	10.3
OH	2,127	1,939	2,036	-4.3	5.0
WI	53,793	50,279	49,300	-8.4	-1.9
Oth Sts <sup>2</sup>	63,202	79,095	73,547	16.4	-7.0
US	248,910	258,688	250,630	0.7	-3.1
Atlantic	10,162	10,000	12,073	18.8	20.7
E N Cen	55,936	52,240	51,353	-8.2	-1.7
W N Cen	57,451	50,854	54,115	-5.8	6.4
S Cen	2,790	3,923	2,899	3.9	-26.1
West	122,571	141,671	130,190	6.2	-8.1

<sup>1</sup> Revised.

<sup>2</sup> States not shown when fewer than 3 plants reported or individual plant operations could be disclosed. Percent change shown only when comparable States are included in the calculation.

**Italian Cheese, Total: Production by State and  
United States, October 2005-2006**

State	Oct 2005	Sep <sup>1</sup> 2006	Oct 2006	Change From	
				Oct 2005	Sep 2006
	<i>1,000 Pounds</i>	<i>1,000 Pounds</i>	<i>1,000 Pounds</i>	<i>Percent</i>	<i>Percent</i>
CA	91,342	98,070	103,017	12.8	5.0
ID	12,123	12,072	11,284	-6.9	-6.5
NY	32,662	31,606	34,431	5.4	8.9
PA	18,779	17,350	17,972	-4.3	3.6
SD	7,172	7,384	7,325	2.1	-0.8
WI	91,137	98,887	99,457	9.1	0.6
Oth Sts <sup>2</sup>	58,686	58,207	60,884	3.7	4.6
US <sup>3</sup>	311,901	323,576	334,370	7.2	3.3
Atlantic	60,720	57,304	60,399	-0.5	5.4
E N Cen	103,134	110,149	111,861	8.5	1.6
West	135,503	143,101	149,237	10.1	4.3

<sup>1</sup> Revised.

<sup>2</sup> States not shown when fewer than 3 plants reported or individual plant operations could be disclosed. Percent change shown only when comparable States are included in the calculation.

<sup>3</sup> Region totals may not add to U.S. when compiled regions could not be disclosed.

**Mozzarella Cheese: Production by State and United States, October 2005-2006**

State	Oct 2005	Sep <sup>1</sup> 2006	Oct 2006	Change From	
				Oct 2005	Sep 2006
	<i>1,000 Pounds</i>	<i>1,000 Pounds</i>	<i>1,000 Pounds</i>	<i>Percent</i>	<i>Percent</i>
CA	81,933	89,680	91,624	11.8	2.2
ID	10,308	10,510	9,701	-5.9	-7.7
NY	14,202	15,068	15,702	10.6	4.2
PA	15,713	14,956	15,526	-1.2	3.8
WI	66,238	72,348	72,300	9.2	-0.1
Oth Sts <sup>2</sup>	55,277	55,036	58,566	6.0	6.4
US <sup>3</sup>	243,671	257,598	263,419	8.1	2.3
Atlantic	35,970	35,846	37,134	3.2	3.6
E N Cen	75,321	81,074	81,919	8.8	1.0
West	123,470	131,966	135,258	9.5	2.5

<sup>1</sup> Revised.

<sup>2</sup> States not shown when fewer than 3 plants reported or individual plant operations could be disclosed. Percent change shown only when comparable States are included in the calculation.

<sup>3</sup> Region totals may not add to U.S. when compiled regions could not be disclosed.

**Butter: Production by State and United States, October 2005-2006**

State	Oct 2005	Sep <sup>1</sup> 2006	Oct 2006	Change From	
				Oct 2005	Sep 2006
	<i>1,000 Pounds</i>	<i>1,000 Pounds</i>	<i>1,000 Pounds</i>	<i>Percent</i>	<i>Percent</i>
CA	36,216	34,880	38,368	5.9	10.0
NY	1,011	966	1,060	4.8	9.7
PA	5,703	4,829	5,612	-1.6	16.2
WI	29,812	27,061	32,000	7.3	18.3
Oth Sts <sup>2</sup>	36,173	36,035	41,132	13.7	14.1
US <sup>3</sup>	108,915	103,771	118,172	8.5	13.9
N Atl	9,240	6,710	7,874	-14.8	17.3
E N Cen	31,771	29,250	34,400	8.3	17.6
W N Cen	5,553	7,342	9,834	77.1	33.9
West	52,065	50,568	55,615	6.8	10.0

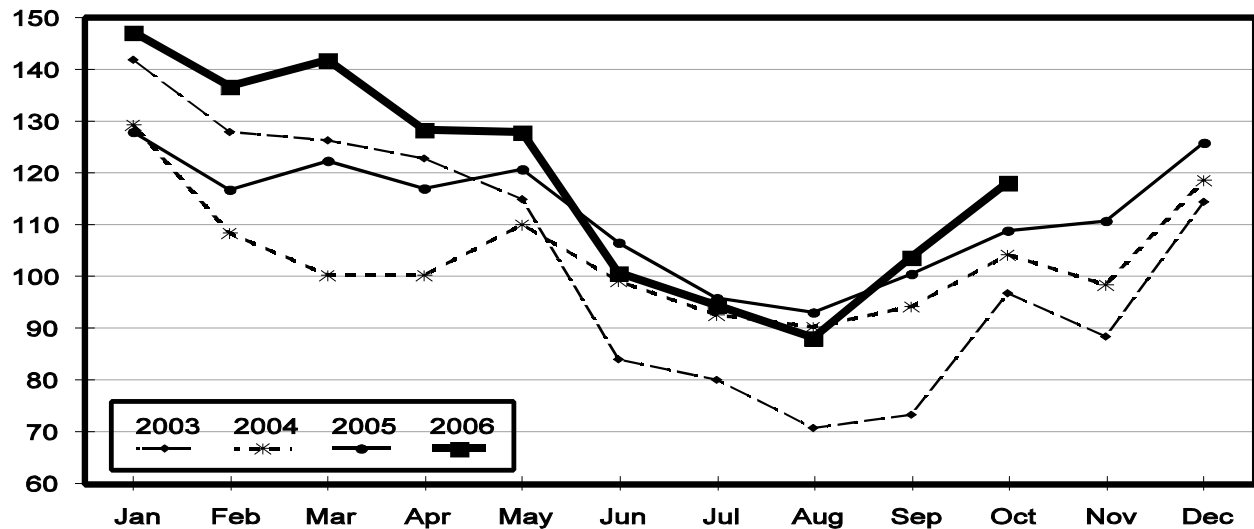
<sup>1</sup> Revised.

<sup>2</sup> States not shown when fewer than 3 plants reported or individual plant operations could be disclosed. Percent change shown only when comparable States are included in the calculation.

<sup>3</sup> Region totals may not add to U.S. when compiled regions could not be disclosed.

## Total Butter Production United States

Million Pounds





**Nonfat Dry Milk, Human: Production by State  
and United States, October 2005-2006**

State	Oct 2005	Sep <sup>1</sup> 2006	Oct 2006	Change From	
				Oct 2005	Sep 2006
	<i>1,000 Pounds</i>	<i>1,000 Pounds</i>	<i>1,000 Pounds</i>	<i>Percent</i>	<i>Percent</i>
CA	40,491	41,508	44,603	10.2	7.5
PA	3,577	2,031	1,867	-47.8	-8.1
Oth Sts <sup>2</sup>	29,486	21,349	26,183	-11.2	22.6
US <sup>3</sup>	73,554	64,888	72,653	-1.2	12.0
Atlantic	8,263	3,250	2,809	-66.0	-13.6
E N Cen	2,601	2,545	2,066	-20.6	-18.8
W N Cen	2,569	3,021	4,959	93.0	64.2
West	58,390	56,072	62,819	7.6	12.0

<sup>1</sup> Revised.

<sup>2</sup> States not shown when fewer than 3 plants reported or individual plant operations could be disclosed. Percent change shown only when comparable States are included in the calculation.

<sup>3</sup> Region totals may not add to U.S. when compiled regions could not be disclosed.

**Dry Whey, Human: Production by State  
and United States, October 2005-2006**

State	Oct 2005	Sep <sup>1</sup> 2006	Oct 2006	Change From	
				Oct 2005	Sep 2006
	<i>1,000 Pounds</i>	<i>1,000 Pounds</i>	<i>1,000 Pounds</i>	<i>Percent</i>	<i>Percent</i>
CA	10,400	9,298	9,650	-7.2	3.8
MN	3,924	4,388	5,106	30.1	16.4
NY	10,065	10,960	10,963	8.9	
WI	21,704	22,497	23,000	6.0	2.2
Oth Sts <sup>2</sup>	29,730	35,075	34,954	17.6	-0.3
US	75,823	82,218	83,673	10.4	1.8
Atlantic	17,294	18,231	18,449	6.7	1.2
Central	33,758	35,079	36,079	6.9	2.9
West	24,771	28,908	29,145	17.7	0.8

<sup>1</sup> Revised.

<sup>2</sup> States not shown when fewer than 3 plants reported or individual plant operations could be disclosed. Percent change shown only when comparable States are included in the calculation.

**Ice Cream, Hard: Production by State and United States, October 2005-2006**

State	Oct 2005	Sep <sup>1</sup> 2006	Oct 2006	Change From	
				Oct 2005	Sep 2006
	<i>1,000 Gallons</i>	<i>1,000 Gallons</i>	<i>1,000 Gallons</i>	<i>Percent</i>	<i>Percent</i>
CA	10,505	12,271	9,094	-13.4	-25.9
FL	1,390	1,500	1,400	0.7	-6.7
IN	7,930	7,366	7,428	-6.3	0.8
MD	1,107	1,467	1,360	22.9	-7.3
MA	4,700	3,960	3,602	-23.4	-9.0
MN	3,041	3,311	3,320	9.2	0.3
MO	2,173	1,663	2,109	-2.9	26.8
NY	2,273	2,231	2,301	1.2	3.1
OH	1,683	2,121	1,780	5.8	-16.1
OR	892	979	928	4.0	-5.2
PA	2,898	3,392	3,035	4.7	-10.5
TN	1,311	1,406	1,380	5.3	-1.8
TX	4,783	4,777	3,811	-20.3	-20.2
UT	2,117	1,932	2,050	-3.2	6.1
Oth Sts <sup>2</sup>	23,059	24,329	20,701	-10.2	-14.9
US	69,862	72,705	64,299	-8.0	-11.6
N Atl	13,141	12,928	12,359	-6.0	-4.4
S Atl	5,224	5,430	4,752	-9.0	-12.5
E N Cen	14,191	14,776	13,687	-3.6	-7.4
W N Cen	10,912	11,177	10,227	-6.3	-8.5
S Cen	9,787	9,960	8,894	-9.1	-10.7
West	16,607	18,434	14,380	-13.4	-22.0

<sup>1</sup> Revised.

<sup>2</sup> States not shown when fewer than 3 plants reported or individual plant operations could be disclosed. Percent change shown only when comparable States are included in the calculation.

**Canned Milk and Dry Milk Products: Manufacturers' Shipments,  
and Stocks, October, 2005-2006**

Product	Oct 2005	Sep 2006 <sup>1</sup>	Oct 2006	Change From	
				Oct 2005	Sep 2006
	<b>Manufacturers' Shipments<sup>2</sup></b>				
	<i>1,000 Pounds</i>	<i>1,000 Pounds</i>	<i>1,000 Pounds</i>	<i>Percent</i>	<i>Percent</i>
Nonfat Dry Milk, Human	63,448	68,578	69,555	9.6	1.4
	<b>Manufacturers' Stocks End-of-Month<sup>3</sup></b>				
	<i>1,000 Pounds</i>	<i>1,000 Pounds</i>	<i>1,000 Pounds</i>	<i>Percent</i>	<i>Percent</i>
Canned Evaporated and Condensed Whole Milk	71,565	89,753	59,110	-17.4	-34.1
Nonfat Dry Milk, Human	87,935	40,820	36,229	-58.8	-11.2
Dry Buttermilk, Total	8,933	3,533	4,199	-53.0	18.9

<sup>1</sup> Revised.

<sup>2</sup> For dry products, shipments of bulk goods only.

<sup>3</sup> Stocks held by manufacturers at all points and in transit.

**Procedures and Reliability:** Estimates included in this report are based on data provided each month by manufacturers of these products. In 32 States, the State Departments of Agriculture assist in collection of data, which eliminates duplicate reporting and reduces respondent burden. Data are collected by mail, personal and telephone interviews following the close of each month. There were 1,081 manufacturers that made one or more products in 2005. Each month, reports are generally received from all dairy plants in States with small numbers of plants. In States with large numbers of plants, survey procedures are designed to obtain monthly reports from all large plants and from a sample of small plants. Monthly estimates are based upon returns from about 70 percent of the plants which account for 70 to 90 percent of the total production of major dairy products.

**Revision Policy:** Monthly estimates are subject to revision the month following the preliminary estimates. Annual estimates are published in the "**Dairy Products**" report published each April which includes any revisions made to current and previous year. An attempt is made to get information from all plants for preparing these estimates

### Information Contacts

Listed below are the commodity specialists in the Livestock Branch of the National Agricultural Statistics Service to contact for additional information.

- Dan Kerestes, Chief, Livestock Branch . . . . . (202) 720-3570
- William Weaver, Head, Livestock Section . . . . . (202) 720-3570
  - Bruce Boess - Hogs and Pigs . . . . . (202) 720-3106
  - Shawn Clark - Dairy Products . . . . . (202) 690-3236
  - Jason Hardegree - Milk Production and Milk Cows . . . . . (202) 720-3278
  - Scott Hollis - Sheep & Lambs, Goats . . . . . (202) 720-4751
  - Mike Miller - Cattle, Cattle on Feed . . . . . (202) 720-3040
  - Katy Paulsen - Livestock Slaughter . . . . . (515) 284-4340
  - Charmaine Wilson - Dairy Products Prices . . . . . (202) 690-2168

## ACCESS TO REPORTS!!

---

For your convenience, there are several ways to obtain NASS reports, data products, and services:

### INTERNET ACCESS

All NASS reports are available free of charge on the worldwide Internet. For access, connect to the Internet and go to the NASS Home Page at: [www.nass.usda.gov](http://www.nass.usda.gov).

### E-MAIL SUBSCRIPTION

All NASS reports are available by subscription free of charge direct to your e-mail address. Starting with the NASS Home Page at [www.nass.usda.gov](http://www.nass.usda.gov), under the right navigation, *Receive reports by Email*, click on **National** or **State**. Follow the instructions on the screen.

-----

### PRINTED REPORTS OR DATA PRODUCTS

**CALL OUR TOLL-FREE ORDER DESK: 800-999-6779 (U.S. and Canada)**  
**Other areas, please call 703-605-6220      FAX: 703-605-6900**  
**(Visa, MasterCard, check, or money order acceptable for payment.)**

-----

### ASSISTANCE

For **assistance** with general agricultural statistics or further information about NASS or its products or services, contact the **Agricultural Statistics Hotline** at **800-727-9540**, 7:30 a.m. to 4:00 p.m. ET, or e-mail: [nass@nass.usda.gov](mailto:nass@nass.usda.gov).

The U.S. Department of Agriculture (USDA) prohibits discrimination in all its programs and activities on the basis of race, color, national origin, age, disability, and where applicable, sex, marital status, familial status, parental status, religion, sexual orientation, genetic information, political beliefs, reprisal, or because all or a part of an individual's income is derived from any public assistance program. (Not all prohibited bases apply to all programs.) Persons with disabilities who require alternative means for communication of program information (Braille, large print, audiotape, etc.) should contact USDA's TARGET Center at (202) 720-2600 (voice and TDD).

To file a complaint of discrimination, write to USDA, Director, Office of Civil Rights, 1400 Independence Avenue, S.W., Washington, D.C. 20250-9410, or call (800) 795-3272 (voice) or (202) 720-6382 (TDD). USDA is an equal opportunity provider and employer.