



NASS

FACT FINDERS FOR AGRICULTURE
UNITED STATES DEPARTMENT OF AGRICULTURE

Washington, D.C.

Dairy Products

Released January 5, 2007, by the National Agricultural Statistics Service (NASS), Agricultural Statistics Board, U.S. Department of Agriculture. For information on *Dairy Products* call Shawn Clark at (202) 690-3236, office hours 7:30 a.m. to 4:00 p.m. ET.

November 2006 Highlights

Total cheese output (excluding cottage cheese) was 790 million pounds, 3.1 percent above November 2005 but 1.3 percent below October 2006.

Italian type cheese production totaled 328 million pounds, 2.5 percent above November 2005 but 1.8 percent below October 2006.

American type cheese production totaled 316 million pounds, 1.0 percent above November 2005 but 1.6 percent below October 2006.

Butter production was 116 million pounds, 4.3 percent above November 2005 but 2.5 percent below October 2006.

Frozen dessert: (comparisons with November 2005)

Ice cream, Regular (hard) --- 57.9 million gallons, down 5.2 percent.

Ice cream, Lowfat (total) --- 22.9 million gallons, down 3.7 percent.

Ice cream, Nonfat (hard) --- 761 thousand gallons, down 42.3 percent.

Sherbet (hard) --- 3.15 million gallons, down 8.5 percent.

Frozen Yogurt (total) --- 4.49 million gallons, up 1.6 percent.

Nonfat dry milk for human food: (compared with November 2005) --- 79.3 million pounds, down 11.0 percent.

Dry whey products: (comparisons with November 2005)

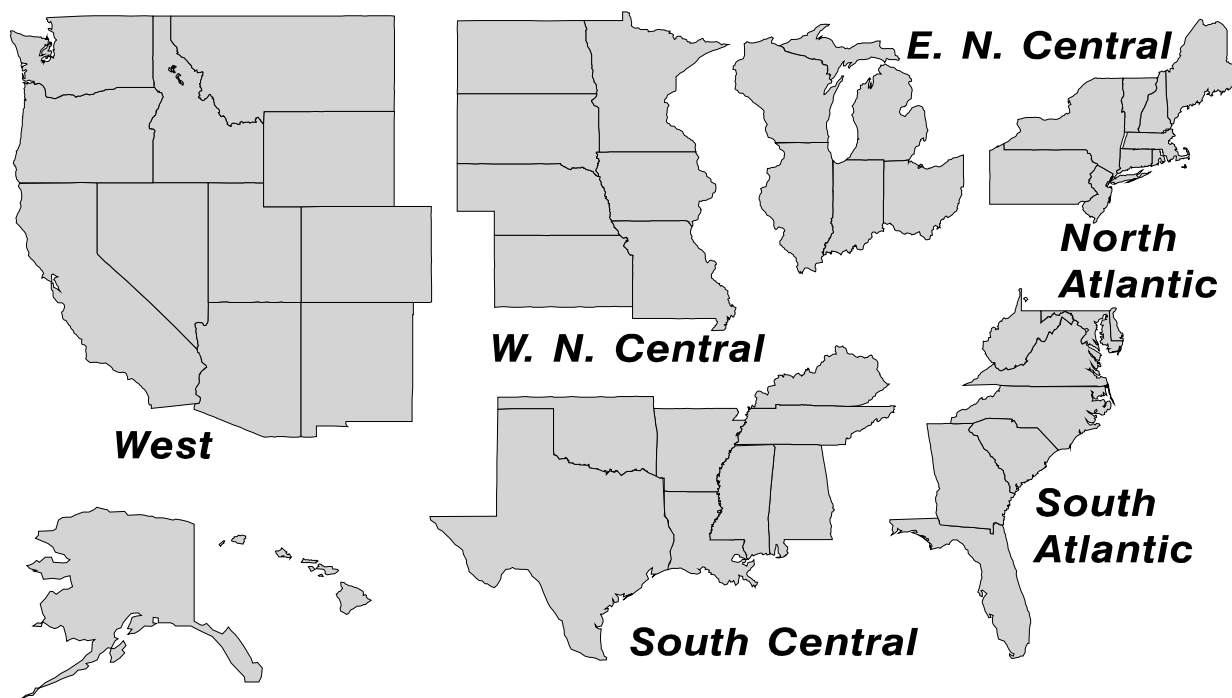
Dry whey, human --- 80.9 million pounds, up 1 percent.

Dry whey, animal --- 3.77 million pounds, down 20.2 percent.

Dry whey, total --- 84.6 million pounds, down 0.2 percent.

U. S. Geographic Regions Dairy Products

If we are not able to publish a region for confidentiality reasons, it will be combined with other regions when possible. For example, if North Atlantic can not be published, then it will be combined with South Atlantic to publish Atlantic. The West North Central and East North Central will be combined, if necessary, to form North Central. In the event that neither could be published, they may be combined with South Central to publish Central. Some tables will have only limited regions shown, therefore the regions may not add to the United States total.



Contents

Page

Dairy Products: Production by Product, United States	1
Whey and Modified Whey Products: Production, Stocks, and Prices, United States	2
Dairy Products: Production by Product and Month, United States	3
Select Commodities by State and United States	10
Canned Milk and Dry Milk Products: Manufacturer's Shipments, Stocks, and Selling Prices	15
Procedures and Reliability	16
Information Contacts	16

**Dairy Products: Production by Product,
United States, November, 2005-2006**

Product	Nov 2005	Oct 2006 ¹	Nov 2006	Change From	
				Nov 2005	Oct 2006
	<i>1,000 Pounds</i>	<i>1,000 Pounds</i>	<i>1,000 Pounds</i>	<i>Percent</i>	<i>Percent</i>
Butter	110,905	118,598	115,686	4.3	-2.5
Cheese					
American Types ²	313,195	321,234	316,253	1.0	-1.6
Cheddar	248,464	250,616	251,935	1.4	0.5
Swiss	25,347	25,500	24,184	-4.6	-5.2
Brick and Muenster	8,102	8,953	9,122	12.6	1.9
Cream and Neufchatel	65,675	72,052	73,950	12.6	2.6
Hispanic	13,786	14,625	14,472	5.0	-1.0
Mozzarella	252,933	263,140	259,459	2.6	-1.4
Other Italian Types	67,371	71,114	68,722	2.0	-3.4
Total Italian Types	320,304	334,254	328,181	2.5	-1.8
All Other Types	19,652	23,720	23,542	19.8	-0.8
Total	766,061	800,338	789,704	3.1	-1.3
Cottage Cheese, Curd ³	36,347	38,766	36,596	0.7	-5.6
Cottage Cheese, Cream ⁴	28,679	30,137	28,955	1.0	-3.9
Cottage Cheese, Lowfat ⁵	31,406	32,376	30,922	-1.5	-4.5
Canned Evaporated and Condensed Whole Milk	40,437	42,660	36,981	-8.5	-13.3
Dry Whole Milk	2,043	1,994	2,978	45.8	49.3
Nonfat Dry Milk, Human Skim Milk Powders ⁶	89,095	72,283	79,270	-11.0	9.7
Dry Skim Milk, Animal	333	349	363	9.0	4.0
Dry Buttermilk	4,450	4,890	4,765	7.1	-2.6
Sour Cream	108,466	98,611	107,081	-1.3	8.6
Yogurt, Plain & Flavored	219,567	262,864	229,753	4.6	-12.6
	<i>1,000 Gallons</i>	<i>1,000 Gallons</i>	<i>1,000 Gallons</i>	<i>Percent</i>	<i>Percent</i>
Frozen Products					
Ice Cream, Regular, Hard	61,133	64,360	57,943	-5.2	-10.0
Ice Cream, Lowfat, Hard	7,906	10,071	7,659	-3.1	-23.9
Ice Cream, Lowfat, Soft	15,864	19,837	15,222	-4.0	-23.3
Ice Cream, Lowfat, Total	23,770	29,908	22,881	-3.7	-23.5
Ice Cream, Nonfat, Hard	1,319	1,022	761	-42.3	-25.5
Sherbet, Hard	3,442	3,690	3,150	-8.5	-14.6
Water and Juice Ices	3,341	3,825	2,791	-16.5	-27.0
Frozen Yogurt, Total	4,419	4,948	4,490	1.6	-9.3
Regular & Lowfat, Hard	1,208	1,222	1,184	-2.0	-3.1
Nonfat, Hard	696	838	601	-13.6	-28.3
Other Frozen Dairy Products	392	911	735	87.5	-19.3
Mix for Frozen Products					
Ice Cream Mix	33,883	35,953	32,427	-4.3	-9.8
Ice Cream, Lowfat, Mix	13,615	17,179	13,146	-3.4	-23.5
Ice Cream, Nonfat, Mix	831	655	510	-38.6	-22.1
Sherbet Mix	2,523	2,571	2,183	-13.5	-15.1
Yogurt Mix	2,748	2,999	2,721	-1.0	-9.3

¹ Revised.

² Includes Cheddar, Colby, Monterey, and Jack.

³ Mostly used for processing into cream or lowfat cottage cheese.

⁴ Fat content 4 percent or more.

⁵ Fat content less than 4 percent.

⁶ Includes protein standardized and blends.

**Whey and Modified Whey Products: Production, Stocks,
and Prices, United States, November, 2005-2006**

Product	Nov 2005	Oct 2006 ¹	Nov 2006	Change From	
				Nov 2005	Oct 2006
Production					
	<i>1,000 Pounds</i>	<i>1,000 Pounds</i>	<i>1,000 Pounds</i>	<i>Percent</i>	<i>Percent</i>
Condensed Whey, Solids Content ²					
Sweet-Type, Human	7,065	8,141	7,778	10.1	-4.5
Dry Whey Products					
Dry Whey, Human	80,118	83,670	80,866	0.9	-3.4
Dry Whey, Animal	4,726	3,175	3,769	-20.2	18.7
Dry Whey, Total	84,844	86,845	84,635	-0.2	-2.5
Reduced Lactose and Minerals					
Human Food	3,364	4,407	3,435	2.1	-22.1
Animal Feed	4,109	3,680	3,881	-5.5	5.5
Lactose, Human and Animal	57,186	62,278	60,664	6.1	-2.6
Whey					
Protein Concentrate					
Human ³	27,852	29,458	28,682	3.0	-2.6
Animal ³	4,263	4,763	4,138	-2.9	-13.1
Total ³	32,115	34,221	32,820	2.2	-4.1
25.0-49.9 Percent ⁴	23,407	23,526	22,673	-3.1	-3.6
50.0-89.9 Percent ⁴	8,708	10,695	10,147	16.5	-5.1
Protein Isolates ⁵	2,328	2,857	2,657	14.1	-7.0
Manufacturers' Stocks End-of-Month ⁶					
	<i>1,000 Pounds</i>	<i>1,000 Pounds</i>	<i>1,000 Pounds</i>	<i>Percent</i>	<i>Percent</i>
Dry Whey Products					
Dry Whey, Human	33,552	30,864	30,450	-9.2	-1.3
Dry Whey, Animal	3,692	1,574	1,506	-59.2	-4.3
Dry Whey, Total	37,244	32,438	31,956	-14.2	-1.5
Reduced Lactose and Minerals					
Human and Animal ⁷	3,896	4,772	4,258	9.3	-10.8
Lactose, Human and Animal	51,759	39,183	38,604	-25.4	-1.5
Whey					
Protein Concentrate					
Human ³	25,672	24,691	25,324	-1.4	2.6
Animal ³	2,514	2,541	2,353	-6.4	-7.4
Total ³	28,186	27,232	27,677	-1.8	1.6
25.0-49.9 Percent ⁴	17,172	16,786	17,689	3.0	5.4
50.0-89.9 Percent ⁴	11,014	10,446	9,988	-9.3	-4.4
Manufacturers' Selling Price ⁸					
	<i>Cents per Pound</i>	<i>Cents per Pound</i>	<i>Cents per Pound</i>	<i>Cents Change</i>	<i>Cents Change</i>
Dry Whey, Animal	29.2	33.3	34.8	5.6	1.5

¹ Revised.

² Final marketable product only. Does not include quantity used or shipped to another plant for further processing into dry whey or modified whey products. Does not include sweet-type, animal whey.

³ Whey Protein Concentrate, 25.0 to 89.9 percent.

⁴ Whey Protein Concentrate, Human and Animal.

⁵ Whey Protein Isolate, 90.0 percent or greater.

⁶ Stocks held by manufacturers at all points and in transit.

⁷ Reduced lactose and minerals stocks combined to avoid disclosure of individual operations.

⁸ Prices for bulk goods, f.o.b. plant. Average monthly prices reported by firms.

**Dairy Products: Production by Product and Month,
United States, 2005-2006 ¹**

Product and Month	By Month			Cumulative		
	2005	2006	Change From 2005	2005	2006	Change From 2005
	<i>1,000 Pounds</i>	<i>1,000 Pounds</i>	<i>Percent</i>	<i>1,000 Pounds</i>	<i>1,000 Pounds</i>	<i>Percent</i>
Total Cheese						
Jan	753,967	772,337	2.4	753,967	772,337	2.4
Feb	704,633	720,978	2.3	1,458,600	1,493,315	2.4
Mar	797,511	812,634	1.9	2,256,111	2,305,949	2.2
Apr	754,849	786,477	4.2	3,010,960	3,092,426	2.7
May	783,943	811,591	3.5	3,794,903	3,904,017	2.9
Jun	764,468	793,937	3.9	4,559,371	4,697,954	3.0
Jul	739,472	767,436	3.8	5,298,843	5,465,390	3.1
Aug	757,402	788,908	4.2	6,056,245	6,254,298	3.3
Sep	745,485	784,276	5.2	6,801,730	7,038,574	3.5
Oct	760,407	800,338	5.3	7,562,137	7,838,912	3.7
Nov	766,061	789,704	3.1	8,328,198	8,628,616	3.6
Dec	798,909			9,127,107		
American Cheese						
Jan	322,332	324,545	0.7	322,332	324,545	0.7
Feb	292,238	304,376	4.2	614,570	628,921	2.3
Mar	331,468	338,383	2.1	946,038	967,304	2.2
Apr	327,575	338,715	3.4	1,273,613	1,306,019	2.5
May	332,501	346,512	4.2	1,606,114	1,652,531	2.9
Jun	321,389	337,024	4.9	1,927,503	1,989,555	3.2
Jul	315,977	328,226	3.9	2,243,480	2,317,781	3.3
Aug	312,028	318,930	2.2	2,555,508	2,636,711	3.2
Sep	301,791	325,166	7.7	2,857,299	2,961,877	3.7
Oct	312,321	321,234	2.9	3,169,620	3,283,111	3.6
Nov	313,195	316,253	1.0	3,482,815	3,599,364	3.3
Dec	330,135			3,812,950		
Cheddar Cheese						
Jan	261,868	265,809	1.5	261,868	265,809	1.5
Feb	237,987	246,344	3.5	499,855	512,153	2.5
Mar	268,668	270,553	0.7	768,523	782,706	1.8
Apr	262,787	273,664	4.1	1,031,310	1,056,370	2.4
May	265,569	275,298	3.7	1,296,879	1,331,668	2.7
Jun	258,211	268,350	3.9	1,555,090	1,600,018	2.9
Jul	252,709	267,088	5.7	1,807,799	1,867,106	3.3
Aug	245,144	252,126	2.8	2,052,943	2,119,232	3.2
Sep	239,629	258,688	8.0	2,292,572	2,377,920	3.7
Oct	248,910	250,616	0.7	2,541,482	2,628,536	3.4
Nov	248,464	251,935	1.4	2,789,946	2,880,471	3.2
Dec	262,469			3,052,415		

See footnote(s) at end of table.

--continued

**Dairy Products: Production by Product and Month,
United States, 2005-2006 ¹ (continued)**

Product and Month	By Month			Cumulative		
	2005	2006	Change From 2005	2005	2006	Change From 2005
	<i>1,000 Pounds</i>	<i>1,000 Pounds</i>	<i>Percent</i>	<i>1,000 Pounds</i>	<i>1,000 Pounds</i>	<i>Percent</i>
Italian Cheese						
Jan	316,288	328,315	3.8	316,288	328,315	3.8
Feb	299,673	307,623	2.7	615,961	635,938	3.2
Mar	338,682	346,179	2.2	954,643	982,117	2.9
Apr	310,719	328,588	5.8	1,265,362	1,310,705	3.6
May	327,196	335,577	2.6	1,592,558	1,646,282	3.4
Jun	319,049	326,014	2.2	1,911,607	1,972,296	3.2
Jul	303,054	318,197	5.0	2,214,661	2,290,493	3.4
Aug	311,518	333,002	6.9	2,526,179	2,623,495	3.9
Sep	310,339	323,576	4.3	2,836,518	2,947,071	3.9
Oct	311,901	334,254	7.2	3,148,419	3,281,325	4.2
Nov	320,304	328,181	2.5	3,468,723	3,609,506	4.1
Dec	336,007			3,804,730		
Mozzarella						
Jan	250,595	259,574	3.6	250,595	259,574	3.6
Feb	239,382	242,804	1.4	489,977	502,378	2.5
Mar	269,830	273,870	1.5	759,807	776,248	2.2
Apr	247,184	261,653	5.9	1,006,991	1,037,901	3.1
May	262,238	267,474	2.0	1,269,229	1,305,375	2.8
Jun	255,540	261,675	2.4	1,524,769	1,567,050	2.8
Jul	243,304	254,757	4.7	1,768,073	1,821,807	3.0
Aug	244,631	263,715	7.8	2,012,704	2,085,522	3.6
Sep	243,687	257,598	5.7	2,256,391	2,343,120	3.8
Oct	243,671	263,140	8.0	2,500,062	2,606,260	4.2
Nov	252,933	259,459	2.6	2,752,995	2,865,719	4.1
Dec	267,803			3,020,798		
Other Italian						
Jan	65,693	68,741	4.6	65,693	68,741	4.6
Feb	60,291	64,819	7.5	125,984	133,560	6.0
Mar	68,852	72,309	5.0	194,836	205,869	5.7
Apr	63,535	66,935	5.4	258,371	272,804	5.6
May	64,958	68,103	4.8	323,329	340,907	5.4
Jun	63,509	64,339	1.3	386,838	405,246	4.8
Jul	59,750	63,440	6.2	446,588	468,686	4.9
Aug	66,887	69,287	3.6	513,475	537,973	4.8
Sep	66,652	65,978	-1.0	580,127	603,951	4.1
Oct	68,230	71,114	4.2	648,357	675,065	4.1
Nov	67,371	68,722	2.0	715,728	743,787	3.9
Dec	68,204			783,932		

See footnote(s) at end of table.

--continued

**Dairy Products: Production by Product and Month,
United States, 2005-2006 ¹ (continued)**

Product and Month	By Month			Cumulative		
	2005	2006	Change From 2005	2005	2006	Change From 2005
	<i>1,000 Pounds</i>	<i>1,000 Pounds</i>	<i>Percent</i>	<i>1,000 Pounds</i>	<i>1,000 Pounds</i>	<i>Percent</i>
Butter						
Jan	128,020	147,251	15.0	128,020	147,251	15.0
Feb	116,927	136,953	17.1	244,947	284,204	16.0
Mar	122,402	141,993	16.0	367,349	426,197	16.0
Apr	117,061	128,457	9.7	484,410	554,654	14.5
May	120,715	128,126	6.1	605,125	682,780	12.8
Jun	106,559	100,779	-5.4	711,684	783,559	10.1
Jul	95,929	94,567	-1.4	807,613	878,126	8.7
Aug	93,194	88,325	-5.2	900,807	966,451	7.3
Sep	100,647	103,771	3.1	1,001,454	1,070,222	6.9
Oct	108,915	118,598	8.9	1,110,369	1,188,820	7.1
Nov	110,905	115,686	4.3	1,221,274	1,304,506	6.8
Dec	125,953			1,347,227		
Nonfat Dry Milk, Human						
Jan	93,261	107,254	15.0	93,261	107,254	15.0
Feb	97,275	117,466	20.8	190,536	224,720	17.9
Mar	109,299	128,269	17.4	299,835	352,989	17.7
Apr	104,876	129,225	23.2	404,711	482,214	19.2
May	124,329	132,262	6.4	529,040	614,476	16.1
Jun	124,206	117,049	-5.8	653,246	731,525	12.0
Jul	108,865	88,227	-19.0	762,111	819,752	7.6
Aug	86,679	75,860	-12.5	848,790	895,612	5.5
Sep	70,954	64,888	-8.5	919,744	960,500	4.4
Oct	73,554	72,283	-1.7	993,298	1,032,783	4.0
Nov	89,095	79,270	-11.0	1,082,393	1,112,053	2.7
Dec	103,711			1,186,104		
Total Dry Whey ²						
Jan	85,936	88,243	2.7	85,936	88,243	2.7
Feb	79,665	89,713	12.6	165,601	177,956	7.5
Mar	91,775	101,239	10.3	257,376	279,195	8.5
Apr	91,260	96,339	5.6	348,636	375,534	7.7
May	94,083	97,119	3.2	442,719	472,653	6.8
Jun	89,357	90,168	0.9	532,076	562,821	5.8
Jul	89,143	90,348	1.4	621,219	653,169	5.1
Aug	87,438	92,057	5.3	708,657	745,226	5.2
Sep	83,948	86,197	2.7	792,605	831,423	4.9
Oct	82,186	86,845	5.7	874,791	918,268	5.0
Nov	84,844	84,635	-0.2	959,635	1,002,903	4.5
Dec	86,187			1,045,822		

See footnote(s) at end of table.

--continued

**Dairy Products: Production by Product and Month,
United States, 2005-2006 ¹ (continued)**

Product and Month	By Month			Cumulative		
	2005	2006	Change From 2005	2005	2006	Change From 2005
	<i>1,000 Pounds</i>	<i>1,000 Pounds</i>	<i>Percent</i>	<i>1,000 Pounds</i>	<i>1,000 Pounds</i>	<i>Percent</i>
Cream Cottage Cheese						
Jan	29,553	27,785	-6.0	29,553	27,785	-6.0
Feb	27,833	27,193	-2.3	57,386	54,978	-4.2
Mar	32,682	32,115	-1.7	90,068	87,093	-3.3
Apr	30,623	28,580	-6.7	120,691	115,673	-4.2
May	31,463	31,383	-0.3	152,154	147,056	-3.4
Jun	32,266	31,096	-3.6	184,420	178,152	-3.4
Jul	31,938	29,114	-8.8	216,358	207,266	-4.2
Aug	33,782	34,975	3.5	250,140	242,241	-3.2
Sep	33,011	30,703	-7.0	283,151	272,944	-3.6
Oct	30,269	30,137	-0.4	313,420	303,081	-3.3
Nov	28,679	28,955	1.0	342,099	332,036	-2.9
Dec	26,058			368,157		
Lowfat Cottage Cheese						
Jan	30,843	31,617	2.5	30,843	31,617	2.5
Feb	32,060	30,818	-3.9	62,903	62,435	-0.7
Mar	35,064	35,940	2.5	97,967	98,375	0.4
Apr	32,706	31,668	-3.2	130,673	130,043	-0.5
May	34,904	35,108	0.6	165,577	165,151	-0.3
Jun	35,362	33,458	-5.4	200,939	198,609	-1.2
Jul	32,436	32,960	1.6	233,375	231,569	-0.8
Aug	35,568	37,512	5.5	268,943	269,081	0.1
Sep	34,506	33,452	-3.1	303,449	302,533	-0.3
Oct	32,642	32,376	-0.8	336,091	334,909	-0.4
Nov	31,406	30,922	-1.5	367,497	365,831	-0.5
Dec	28,574			396,071		
	<i>1,000 Gallons</i>	<i>1,000 Gallons</i>	<i>Percent</i>	<i>1,000 Gallons</i>	<i>1,000 Gallons</i>	<i>Percent</i>
Ice Cream, Regular, Hard						
Jan	62,103	61,826	-0.4	62,103	61,826	-0.4
Feb	65,827	62,916	-4.4	127,930	124,742	-2.5
Mar	78,753	77,869	-1.1	206,683	202,611	-2.0
Apr	78,091	77,408	-0.9	284,774	280,019	-1.7
May	78,375	82,128	4.8	363,149	362,147	-0.3
Jun	91,190	87,898	-3.6	454,339	450,045	-0.9
Jul	87,054	85,374	-1.9	541,393	535,419	-1.1
Aug	89,142	84,777	-4.9	630,535	620,196	-1.6
Sep	72,359	72,705	0.5	702,894	692,901	-1.4
Oct	69,862	64,360	-7.9	772,756	757,261	-2.0
Nov	61,133	57,943	-5.2	833,889	815,204	-2.2
Dec	54,854			888,743		

See footnote(s) at end of table.

--continued

**Dairy Products: Production by Product and Month,
United States, 2005-2006 ¹ (continued)**

Product and Month	By Month			Cumulative		
	2005	2006	Change From 2005	2005	2006	Change From 2005
	<i>1,000 Gallons</i>	<i>1,000 Gallons</i>	<i>Percent</i>	<i>1,000 Gallons</i>	<i>1,000 Gallons</i>	<i>Percent</i>
Ice Cream, Lowfat						
Jan	24,199	25,444	5.1	24,199	25,444	5.1
Feb	26,181	24,134	-7.8	50,380	49,578	-1.6
Mar	32,927	31,475	-4.4	83,307	81,053	-2.7
Apr	33,192	32,054	-3.4	116,499	113,107	-2.9
May	33,123	37,226	12.4	149,622	150,333	0.5
Jun	38,572	41,999	8.9	188,194	192,332	2.2
Jul	36,928	36,919		225,122	229,251	1.8
Aug	35,592	37,658	5.8	260,714	266,909	2.4
Sep	30,745	30,862	0.4	291,459	297,771	2.2
Oct	27,013	29,908	10.7	318,472	327,679	2.9
Nov	23,770	22,881	-3.7	342,242	350,560	2.4
Dec	21,726			363,968		
Ice Cream, NF, Hard						
Jan	1,205	1,330	10.4	1,205	1,330	10.4
Feb	1,715	1,254	-26.9	2,920	2,584	-11.5
Mar	1,686	1,607	-4.7	4,606	4,191	-9.0
Apr	1,682	1,324	-21.3	6,288	5,515	-12.3
May	1,730	1,486	-14.1	8,018	7,001	-12.7
Jun	1,923	1,402	-27.1	9,941	8,403	-15.5
Jul	2,188	1,349	-38.3	12,129	9,752	-19.6
Aug	1,910	1,358	-28.9	14,039	11,110	-20.9
Sep	1,611	1,018	-36.8	15,650	12,128	-22.5
Oct	1,538	1,022	-33.6	17,188	13,150	-23.5
Nov	1,319	761	-42.3	18,507	13,911	-24.8
Dec	1,153			19,660		
Sherbet, Hard						
Jan	3,838	3,893	1.4	3,838	3,893	1.4
Feb	4,036	4,173	3.4	7,874	8,066	2.4
Mar	4,924	4,582	-6.9	12,798	12,648	-1.2
Apr	5,111	4,557	-10.8	17,909	17,205	-3.9
May	4,934	4,791	-2.9	22,843	21,996	-3.7
Jun	5,825	5,210	-10.6	28,668	27,206	-5.1
Jul	5,425	4,898	-9.7	34,093	32,104	-5.8
Aug	5,632	4,777	-15.2	39,725	36,881	-7.2
Sep	4,953	3,824	-22.8	44,678	40,705	-8.9
Oct	3,724	3,690	-0.9	48,402	44,395	-8.3
Nov	3,442	3,150	-8.5	51,844	47,545	-8.3
Dec	3,436			55,280		

See footnote(s) at end of table.

--continued

**Dairy Products: Production by Product and Month,
United States, 2005-2006 ¹ (continued)**

Product and Month	By Month			Cumulative		
	2005	2006	Change From 2005	2005	2006	Change From 2005
	<i>1,000 Pounds</i>	<i>1,000 Pounds</i>	<i>Percent</i>	<i>1,000 Pounds</i>	<i>1,000 Pounds</i>	<i>Percent</i>
Sour Cream						
Jan	76,976	81,288	5.6	76,976	81,288	5.6
Feb	73,791	76,832	4.1	150,767	158,120	4.9
Mar	87,637	89,000	1.6	238,404	247,120	3.7
Apr	72,323	79,298	9.6	310,727	326,418	5.0
May	86,250	91,426	6.0	396,977	417,844	5.3
Jun	85,798	89,599	4.4	482,775	507,443	5.1
Jul	79,324	84,064	6.0	562,099	591,507	5.2
Aug	90,935	97,363	7.1	653,034	688,870	5.5
Sep	79,208	85,154	7.5	732,242	774,024	5.7
Oct	90,019	98,611	9.5	822,261	872,635	6.1
Nov	108,466	107,081	-1.3	930,727	979,716	5.3
Dec	99,090			1,029,817		

See footnote(s) at end of table.

--continued

**Dairy Products: Production by Product and Month,
United States, 2005-2006 ¹ (continued)**

Product and Month	By Month			Cumulative		
	2005	2006	Change From 2005	2005	2006	Change From 2005
	<i>1,000 Pounds</i>	<i>1,000 Pounds</i>	<i>Percent</i>	<i>1,000 Pounds</i>	<i>1,000 Pounds</i>	<i>Percent</i>
Yogurt						
Jan	224,187	252,353	12.6	224,187	252,353	12.6
Feb	236,193	238,108	0.8	460,380	490,461	6.5
Mar	275,949	280,577	1.7	736,329	771,038	4.7
Apr	247,409	254,096	2.7	983,738	1,025,134	4.2
May	264,459	267,283	1.1	1,248,197	1,292,417	3.5
Jun	263,178	272,551	3.6	1,511,375	1,564,968	3.5
Jul	244,608	255,765	4.6	1,755,983	1,820,733	3.7
Aug	265,359	283,584	6.9	2,021,342	2,104,317	4.1
Sep	273,643	267,407	-2.3	2,294,985	2,371,724	3.3
Oct	249,329	262,864	5.4	2,544,314	2,634,588	3.5
Nov	219,567	229,753	4.6	2,763,881	2,864,341	3.6
Dec	225,908			2,989,789		

See footnote(s) at end of table.

--continued

**Dairy Products: Production by Product and Month,
United States, 2005-2006 ¹ (continued)**

Product and Month	By Month			Cumulative		
	2005	2006	Change From 2005	2005	2006	Change From 2005
	<i>1,000 Gallons</i>	<i>1,000 Gallons</i>	<i>Percent</i>	<i>1,000 Gallons</i>	<i>1,000 Gallons</i>	<i>Percent</i>
Frozen Yogurt						
Jan	4,353	4,131	-5.1	4,353	4,131	-5.1
Feb	4,910	4,524	-7.9	9,263	8,655	-6.6
Mar	5,942	6,044	1.7	15,205	14,699	-3.3
Apr	5,737	5,960	3.9	20,942	20,659	-1.4
May	6,239	6,663	6.8	27,181	27,322	0.5
Jun	6,412	6,882	7.3	33,593	34,204	1.8
Jul	5,867	6,240	6.4	39,460	40,444	2.5
Aug	6,142	6,852	11.6	45,602	47,296	3.7
Sep	5,456	5,145	-5.7	51,058	52,441	2.7
Oct	5,114	4,948	-3.2	56,172	57,389	2.2
Nov	4,419	4,490	1.6	60,591	61,879	2.1
Dec	4,460			65,051		

¹ October 2006 data revised.

² Excludes all modified dry whey products.

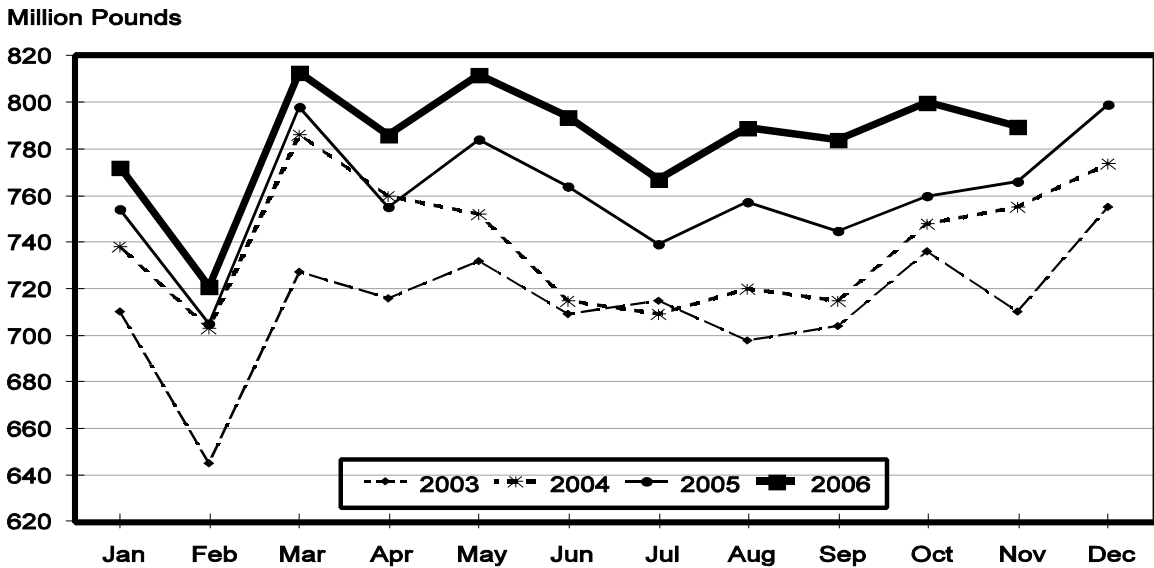
Total Cheese, Excluding Cottage Cheese: Production by State and United States, November 2005-2006

State	Nov 2005	Oct ¹ 2006	Nov 2006	Change From	
				Nov 2005	Oct 2006
	<i>1,000 Pounds</i>	<i>1,000 Pounds</i>	<i>1,000 Pounds</i>	<i>Percent</i>	<i>Percent</i>
CA	178,220	188,563	183,404	2.9	-2.7
ID	68,856	69,216	71,198	3.4	2.9
IL	7,832	6,523	6,229	-20.5	-4.5
IA	12,969	11,675	11,235	-13.4	-3.8
MN	51,208	49,435	48,465	-5.4	-2.0
NM		50,164	51,498		2.7
NY	58,266	63,718	64,147	10.1	0.7
OH	16,831	17,251	16,104	-4.3	-6.6
PA	32,314	29,483	30,911	-4.3	4.8
SD	14,679	14,438	14,644	-0.2	1.4
UT	5,894	5,879	5,529	-6.2	-6.0
WI	203,203	204,515	199,196	-2.0	-2.6
Oth Sts ²	115,789	89,478	87,144		-2.6
US	766,061	800,338	789,704	3.1	-1.3
N Atl	105,620	107,452	109,653	3.8	2.0
S Atl	3,639	3,868	3,657	0.5	-5.5
E N Cen	238,182	239,292	233,865	-1.8	-2.3
W N Cen	84,362	82,395	80,153	-5.0	-2.7
S Cen	9,691	10,290	10,256	5.8	-0.3
West	324,567	357,041	352,120	8.5	-1.4

¹ Revised.

² States not shown when fewer than 3 plants reported or individual plant operations could be disclosed. Percent change shown only when comparable States are included in the calculation.

Total Cheese Production United States



American Cheese: Production by State and United States, November 2005-2006

State	Nov 2005	Oct ¹ 2006	Nov 2006	Change From	
				Nov 2005	Oct 2006
	<i>1,000 Pounds</i>	<i>1,000 Pounds</i>	<i>1,000 Pounds</i>	<i>Percent</i>	<i>Percent</i>
CA	70,261	67,933	66,899	-4.8	-1.5
ID	46,721	49,881	49,593	6.1	-0.6
IA	9,853	8,751	8,573	-13.0	-2.0
MN	48,425	46,990	45,613	-5.8	-2.9
OH	3,302	2,925	2,663	-19.4	-9.0
OR	8,977	10,086	9,363	4.3	-7.2
WI	69,356	62,738	63,000	-9.2	0.4
Oth Sts ²	56,300	71,930	70,549	25.3	-1.9
US	313,195	321,234	316,253	1.0	-1.6
Atlantic	10,834	12,639	11,680	7.8	-7.6
E N Cen	73,469	66,646	66,357	-9.7	-0.4
W N Cen	66,017	63,335	62,152	-5.9	-1.9
S Cen	3,418	2,900	2,923	-14.5	0.8
West	159,457	175,714	173,141	8.6	-1.5

¹ Revised.

² States not shown when fewer than 3 plants reported or individual plant operations could be disclosed. Percent change shown only when comparable States are included in the calculation.

Cheddar Cheese: Production by State and United States, November 2005-2006

State	Nov 2005	Oct ¹ 2006	Nov 2006	Change From	
				Nov 2005	Oct 2006
	<i>1,000 Pounds</i>	<i>1,000 Pounds</i>	<i>1,000 Pounds</i>	<i>Percent</i>	<i>Percent</i>
CA	41,800	36,721	41,971	0.4	14.3
ID	42,447	45,776	46,321	9.1	1.2
MN	44,240	43,112	40,360	-8.8	-6.4
OH	2,126	2,036	1,867	-12.2	-8.3
WI	53,791	49,329	49,000	-8.9	-0.7
Oth Sts ²	64,060	73,642	72,416	13.0	-1.7
US	248,464	250,616	251,935	1.4	0.5
Atlantic	10,476	12,112	11,076	5.7	-8.6
E N Cen	55,933	51,382	50,883	-9.0	-1.0
W N Cen	56,592	53,977	52,192	-7.8	-3.3
S Cen	3,417	2,899	2,922	-14.5	0.8
West	122,046	130,246	134,862	10.5	3.5

¹ Revised.

² States not shown when fewer than 3 plants reported or individual plant operations could be disclosed. Percent change shown only when comparable States are included in the calculation.

**Italian Cheese, Total: Production by State and
United States, November 2005-2006**

State	Nov 2005	Oct ¹ 2006	Nov 2006	Change From	
				Nov 2005	Oct 2006
	<i>1,000 Pounds</i>	<i>1,000 Pounds</i>	<i>1,000 Pounds</i>	<i>Percent</i>	<i>Percent</i>
CA	93,705	103,017	98,831	5.5	-4.1
ID	14,429	11,284	13,774	-4.5	22.1
NY	33,022	34,317	32,064	-2.9	-6.6
PA	19,674	17,972	18,419	-6.4	2.5
SD	7,292	7,325	7,201	-1.2	-1.7
WI	92,400	98,720	95,266	3.1	-3.5
Oth Sts ²	59,782	61,619	62,626	4.8	1.6
US ³	320,304	334,254	328,181	2.5	-1.8
Atlantic	63,008	61,023	59,198	-6.0	-3.0
E N Cen	103,985	111,124	108,679	4.5	-2.2
West	140,420	149,237	147,299	4.9	-1.3

¹ Revised.

² States not shown when fewer than 3 plants reported or individual plant operations could be disclosed. Percent change shown only when comparable States are included in the calculation.

³ Region totals may not add to U.S. when compiled regions could not be disclosed.

Mozzarella Cheese: Production by State and United States, November 2005-2006

State	Nov 2005	Oct ¹ 2006	Nov 2006	Change From	
				Nov 2005	Oct 2006
	<i>1,000 Pounds</i>	<i>1,000 Pounds</i>	<i>1,000 Pounds</i>	<i>Percent</i>	<i>Percent</i>
CA	85,434	91,624	90,043	5.4	-1.7
ID	12,583	9,701	12,082	-4.0	24.5
NY	14,756	15,702	14,110	-4.4	-10.1
PA	16,726	15,526	15,151	-9.4	-2.4
WI	66,764	71,713	68,000	1.9	-5.2
Oth Sts ²	56,670	58,874	60,073	6.0	2.0
US ³	252,933	263,140	259,459	2.6	-1.4
Atlantic	38,513	37,445	35,317	-8.3	-5.7
E N Cen	75,958	81,332	79,116	4.2	-2.7
West	129,538	135,258	136,014	5.0	0.6

¹ Revised.

² States not shown when fewer than 3 plants reported or individual plant operations could be disclosed. Percent change shown only when comparable States are included in the calculation.

³ Region totals may not add to U.S. when compiled regions could not be disclosed.

Butter: Production by State and United States, November 2005-2006

State	Nov 2005	Oct ¹ 2006	Nov 2006	Change From	
				Nov 2005	Oct 2006
	<i>1,000 Pounds</i>	<i>1,000 Pounds</i>	<i>1,000 Pounds</i>	<i>Percent</i>	<i>Percent</i>
CA	36,281	38,369	36,447	0.5	-5.0
NY	1,082	1,060	1,065	-1.6	0.5
PA	5,969	5,612	6,306	5.6	12.4
WI	32,084	31,706	30,000	-6.5	-5.4
Oth Sts ²	35,489	41,851	41,868	18.0	
US ³	110,905	118,598	115,686	4.3	-2.5
N Atl	9,115	7,874	8,762	-3.9	11.3
E N Cen	34,273	34,673	32,791	-4.3	-5.4
W N Cen	5,809	9,834	9,549	64.4	-2.9
West	51,465	55,616	53,731	4.4	-3.4

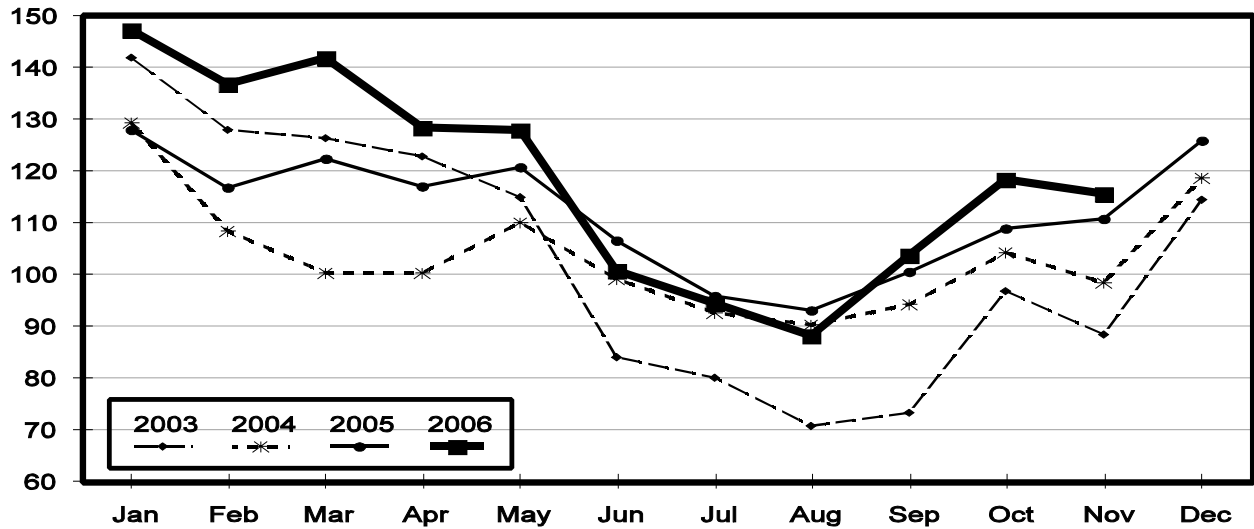
¹ Revised.

² States not shown when fewer than 3 plants reported or individual plant operations could be disclosed. Percent change shown only when comparable States are included in the calculation.

³ Region totals may not add to U.S. when compiled regions could not be disclosed.

Total Butter Production United States

Million Pounds



**Nonfat Dry Milk, Human: Production by State
and United States, November 2005-2006**

State	Nov 2005	Oct ¹ 2006	Nov 2006	Change From	
				Nov 2005	Oct 2006
	<i>1,000 Pounds</i>	<i>1,000 Pounds</i>	<i>1,000 Pounds</i>	<i>Percent</i>	<i>Percent</i>
CA	50,985	44,603	50,388	-1.2	13.0
PA	5,543	1,867	3,484	-37.1	86.6
Oth Sts ²	32,567	25,813	25,398	-22.0	-1.6
US ³	89,095	72,283	79,270	-11.0	9.7
Atlantic	10,360	2,809	5,369	-48.2	91.1
E N Cen	4,720	2,066	2,042	-56.7	-1.2
W N Cen	2,399	4,959	5,332	122.3	7.5
West	66,979	62,449	65,894	-1.6	5.5

¹ Revised.

² States not shown when fewer than 3 plants reported or individual plant operations could be disclosed. Percent change shown only when comparable States are included in the calculation.

³ Region totals may not add to U.S. when compiled regions could not be disclosed.

**Dry Whey, Human: Production by State
and United States, November 2005-2006**

State	Nov 2005	Oct ¹ 2006	Nov 2006	Change From	
				Nov 2005	Oct 2006
	<i>1,000 Pounds</i>	<i>1,000 Pounds</i>	<i>1,000 Pounds</i>	<i>Percent</i>	<i>Percent</i>
CA	12,050	9,650	8,489	-29.6	-12.0
MN	3,949	5,106	4,742	20.1	-7.1
NY	10,104	10,963	9,517	-5.8	-13.2
WI	23,711	22,959	22,900	-3.4	-0.3
Oth Sts ²	30,304	34,992	35,218	16.2	0.6
US	80,118	83,670	80,866	0.9	-3.4
Atlantic	18,460	18,449	17,035	-7.7	-7.7
Central	35,849	36,038	36,542	1.9	1.4
West	25,809	29,183	27,289	5.7	-6.5

¹ Revised.

² States not shown when fewer than 3 plants reported or individual plant operations could be disclosed. Percent change shown only when comparable States are included in the calculation.

Ice Cream, Hard: Production by State and United States, November 2005-2006

State	Nov 2005	Oct ¹ 2006	Nov 2006	Change From	
				Nov 2005	Oct 2006
	<i>1,000 Gallons</i>	<i>1,000 Gallons</i>	<i>1,000 Gallons</i>	<i>Percent</i>	<i>Percent</i>
CA	9,975	9,221	8,794	-11.8	-4.6
FL	1,455	1,350	1,400	-3.8	3.7
IN	6,864	7,428	5,821	-15.2	-21.6
MD	895	1,360	750	-16.2	-44.9
MA	4,158	3,602	3,907	-6.0	8.5
MN	3,000	3,320	3,261	8.7	-1.8
MO	1,134	2,109	1,210	6.7	-42.6
NY	1,594	2,301	1,748	9.7	-24.0
OH	1,508	1,780	1,462	-3.1	-17.9
OR	886	884	860	-2.9	-2.7
PA	2,948	3,035	2,452	-16.8	-19.2
TN	979	1,380	784	-19.9	-43.2
TX	3,663	3,887	3,434	-6.3	-11.7
UT	2,148	2,000	1,814	-15.5	-9.3
Oth Sts ²	19,926	20,703	20,246	1.6	-2.2
US	61,133	64,360	57,943	-5.2	-10.0
N Atl	11,824	12,359	11,392	-3.7	-7.8
S Atl	4,534	4,702	3,512	-22.5	-25.3
E N Cen	12,491	13,687	11,608	-7.1	-15.2
W N Cen	9,035	10,227	10,581	17.1	3.5
S Cen	7,983	8,969	7,335	-8.1	-18.2
West	15,266	14,416	13,515	-11.5	-6.3

¹ Revised.

² States not shown when fewer than 3 plants reported or individual plant operations could be disclosed. Percent change shown only when comparable States are included in the calculation.

**Canned Milk and Dry Milk Products: Manufacturers' Shipments,
and Stocks, November, 2005-2006**

Product	Nov 2005	Oct 2006 ¹	Nov 2006	Change From	
				Nov 2005	Oct 2006
	Manufacturers' Shipments ²				
	<i>1,000 Pounds</i>	<i>1,000 Pounds</i>	<i>1,000 Pounds</i>	<i>Percent</i>	<i>Percent</i>
Nonfat Dry Milk, Human	73,185	68,719	59,862	-18.2	-12.9
	Manufacturers' Stocks End-of-Month ³				
	<i>1,000 Pounds</i>	<i>1,000 Pounds</i>	<i>1,000 Pounds</i>	<i>Percent</i>	<i>Percent</i>
Canned Evaporated and Condensed Whole Milk	43,474	59,110	49,499	13.9	-16.3
Nonfat Dry Milk, Human	91,067	35,742	41,508	-54.4	16.1
Dry Buttermilk, Total	10,566	4,263	3,995	-62.2	-6.3

¹ Revised.

² For dry products, shipments of bulk goods only.

³ Stocks held by manufacturers at all points and in transit.

Procedures and Reliability: Estimates included in this report are based on data provided each month by manufacturers of these products. In 32 States, the State Departments of Agriculture assist in collection of data, which eliminates duplicate reporting and reduces respondent burden. Data are collected by mail, personal and telephone interviews following the close of each month. There were 1,081 manufacturers that made one or more products in 2005. Each month, reports are generally received from all dairy plants in States with small numbers of plants. In States with large numbers of plants, survey procedures are designed to obtain monthly reports from all large plants and from a sample of small plants. Monthly estimates are based upon returns from about 70 percent of the plants which account for 70 to 90 percent of the total production of major dairy products.

Revision Policy: Monthly estimates are subject to revision the month following the preliminary estimates. Annual estimates are published in the "**Dairy Products**" report published each April which includes any revisions made to current and previous year. An attempt is made to get information from all plants for preparing these estimates

Information Contacts

Listed below are the commodity specialists in the Livestock Branch of the National Agricultural Statistics Service to contact for additional information.

- Dan Kerestes, Chief, Livestock Branch (202) 720-3570
- William Weaver, Head, Livestock Section (202) 720-3570
 - Bruce Boess - Hogs and Pigs (202) 720-3106
 - Shawn Clark - Dairy Products (202) 690-3236
 - Jason Hardegree - Milk Production and Milk Cows (202) 720-3278
 - Scott Hollis - Sheep & Lambs, Goats (202) 720-4751
 - Mike Miller - Cattle, Cattle on Feed (202) 720-3040
 - Katy Paulsen - Livestock Slaughter (515) 284-4340
 - Charmaine Wilson - Dairy Products Prices (202) 690-2168

ACCESS TO REPORTS!!

For your convenience, there are several ways to obtain NASS reports, data products, and services:

INTERNET ACCESS

All NASS reports are available free of charge on the worldwide Internet. For access, connect to the Internet and go to the NASS Home Page at: www.nass.usda.gov.

E-MAIL SUBSCRIPTION

All NASS reports are available by subscription free of charge direct to your e-mail address. Starting with the NASS Home Page at www.nass.usda.gov, under the right navigation, *Receive reports by Email*, click on **National** or **State**. Follow the instructions on the screen.

PRINTED REPORTS OR DATA PRODUCTS

CALL OUR TOLL-FREE ORDER DESK: 800-999-6779 (U.S. and Canada)
Other areas, please call 703-605-6220 FAX: 703-605-6900
(Visa, MasterCard, check, or money order acceptable for payment.)

ASSISTANCE

For **assistance** with general agricultural statistics or further information about NASS or its products or services, contact the **Agricultural Statistics Hotline** at **800-727-9540**, 7:30 a.m. to 4:00 p.m. ET, or e-mail: nass@nass.usda.gov.

The U.S. Department of Agriculture (USDA) prohibits discrimination in all its programs and activities on the basis of race, color, national origin, age, disability, and where applicable, sex, marital status, familial status, parental status, religion, sexual orientation, genetic information, political beliefs, reprisal, or because all or a part of an individual's income is derived from any public assistance program. (Not all prohibited bases apply to all programs.) Persons with disabilities who require alternative means for communication of program information (Braille, large print, audiotape, etc.) should contact USDA's TARGET Center at (202) 720-2600 (voice and TDD).

To file a complaint of discrimination, write to USDA, Director, Office of Civil Rights, 1400 Independence Avenue, S.W., Washington, D.C. 20250-9410, or call (800) 795-3272 (voice) or (202) 720-6382 (TDD). USDA is an equal opportunity provider and employer.