



NASS

FACT FINDERS FOR AGRICULTURE
UNITED STATES DEPARTMENT OF AGRICULTURE

Washington, D.C.

Dairy Products

Released February 2, 2007, by the National Agricultural Statistics Service (NASS), Agricultural Statistics Board, U.S. Department of Agriculture. For information on *Dairy Products* call Shawn Clark at (202) 690-3236, office hours 7:30 a.m. to 4:00 p.m. ET.

December 2006 Highlights

Total cheese output (excluding cottage cheese) was 829 million pounds, 3.8 percent above December 2005 and 4.8 percent above November 2006.

Italian type cheese production totaled 352 million pounds, 4.7 percent above December 2005 and 7.8 percent above November 2006.

American type cheese production totaled 340 million pounds, 3.0 percent above December 2005 and 8.0 percent above November 2006.

Butter production was 138 million pounds, 9.5 percent above December 2005 and 17.3 percent above November 2006.

Frozen dessert: (comparisons with December 2005)

Ice cream, Regular (hard) --- 49.4 million gallons, down 10.0 percent.

Ice cream, Lowfat (total) --- 23.1 million gallons, up 6.2 percent.

Sherbet (hard) --- 2.94 million gallons, down 14.3 percent.

Frozen Yogurt (total) --- 3.80 million gallons, down 14.7 percent.

Nonfat dry milk for human food: (compared with December 2005) --- 115 million pounds, up 10.6 percent.

Dry whey products: (comparisons with December 2005)

Dry whey, human --- 86.9 million pounds, up 8.3 percent.

Dry whey, animal --- 3.87 million pounds, down 35.0 percent.

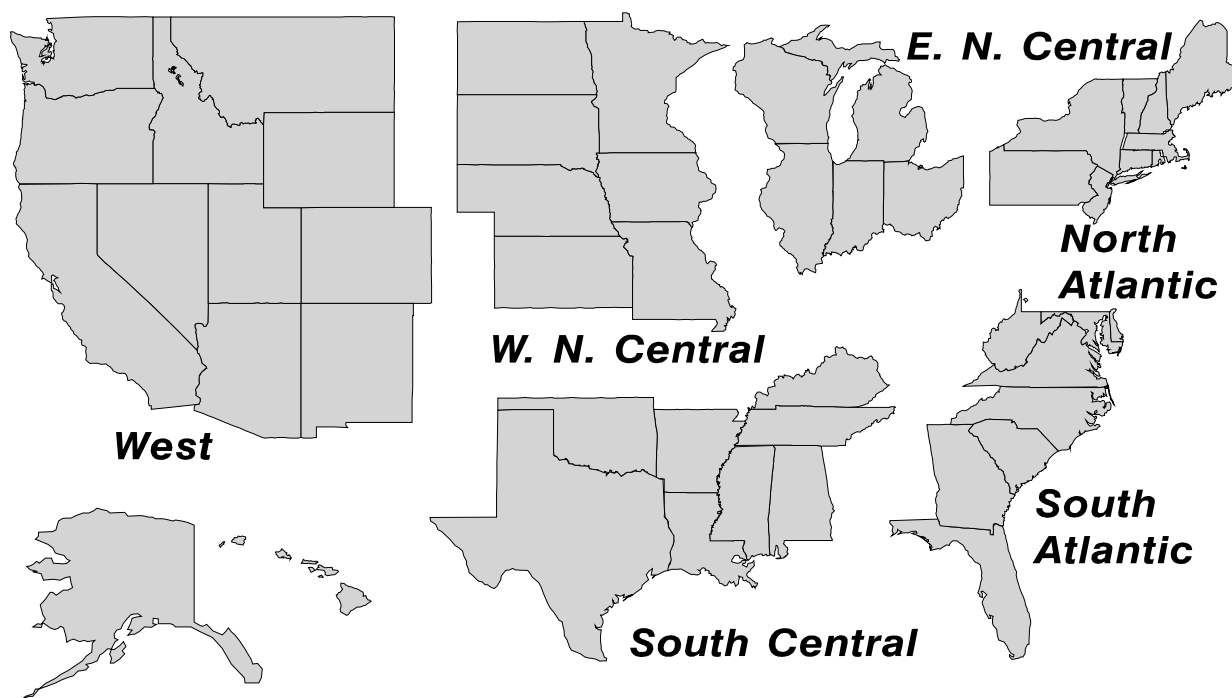
Dry whey, total --- 90.7 million pounds, up 5.3 percent.

Special Note

Beginning with the March 2, 2007 Dairy Products release, several of the cumulative production tables will be reordered due to changes in the dairy products included in these tables. Also, regional data for several state level production tables will be further combined due to confidentiality concerns. Look for these changes in next month's release.

U. S. Geographic Regions Dairy Products

If we are not able to publish a region for confidentiality reasons, it will be combined with other regions when possible. For example, if North Atlantic can not be published, then it will be combined with South Atlantic to publish Atlantic. The West North Central and East North Central will be combined, if necessary, to form North Central. In the event that neither could be published, they may be combined with South Central to publish Central. Some tables will have only limited regions shown, therefore the regions may not add to the United States total.



Contents

Page

Dairy Products: Production by Product, United States	1
Whey and Modified Whey Products: Production, Stocks, and Prices, United States	2
Dairy Products: Production by Product and Month, United States	3
Select Commodities by State and United States	10
Canned Milk and Dry Milk Products: Manufacturer's Shipments, Stocks, and Selling Prices	15
Procedures and Reliability	16
Information Contacts	16

**Dairy Products: Production by Product,
United States, December, 2005-2006**

Product	Dec 2005	Nov 2006 ¹	Dec 2006	Change From	
				Dec 2005	Nov 2006
	<i>1,000 Pounds</i>	<i>1,000 Pounds</i>	<i>1,000 Pounds</i>	<i>Percent</i>	<i>Percent</i>
Butter	125,953	117,560	137,884	9.5	17.3
Cheese					
American Types ²	330,135	314,945	340,032	3.0	8.0
Cheddar	262,469	250,509	274,766	4.7	9.7
Swiss	26,944	25,146	27,001	0.2	7.4
Brick and Muenster	8,706	9,007	8,664	-0.5	-3.8
Cream and Neufchatel	63,718	77,794	62,988	-1.1	-19.0
Hispanic	14,732	14,590	14,707	-0.2	0.8
Mozzarella	267,803	257,433	279,616	4.4	8.6
Other Italian Types	68,204	68,691	72,027	5.6	4.9
Total Italian Types	336,007	326,124	351,643	4.7	7.8
All Other Types	18,667	23,521	23,938	28.2	1.8
Total	798,909	791,127	828,973	3.8	4.8
Cottage Cheese, Curd ³	33,078	36,348	34,527	4.4	-5.0
Cottage Cheese, Cream ⁴	26,058	28,960	26,510	1.7	-8.5
Cottage Cheese, Lowfat ⁵	28,574	31,067	29,245	2.3	-5.9
Canned Evaporated and Condensed Whole Milk	48,101	35,856	38,458	-20.0	7.3
Dry Whole Milk	2,936	3,102	2,659	-9.4	-14.3
Nonfat Dry Milk, Human Skim Milk Powders ⁶	103,711	80,018	114,743	10.6	43.4
Dry Skim Milk, Animal	468	362	764	63.2	111.0
Dry Buttermilk	6,427	4,794	6,431	0.1	34.1
Sour Cream	99,090	110,107	100,247	1.2	-9.0
Yogurt, Plain & Flavored	225,908	230,109	246,508	9.1	7.1
	<i>1,000 Gallons</i>	<i>1,000 Gallons</i>	<i>1,000 Gallons</i>	<i>Percent</i>	<i>Percent</i>
Frozen Products					
Ice Cream, Regular, Hard	54,854	56,749	49,396	-10.0	-13.0
Ice Cream, Lowfat, Hard	7,946	7,684	7,807	-1.7	1.6
Ice Cream, Lowfat, Soft	13,780	15,153	15,264	10.8	0.7
Ice Cream, Lowfat, Total	21,726	22,837	23,071	6.2	1.0
Ice Cream, Nonfat, Hard	1,153	759	743	-35.6	-2.1
Sherbet, Hard	3,436	3,151	2,943	-14.3	-6.6
Water and Juice Ices	2,950	2,801	2,060	-30.2	-26.5
Frozen Yogurt, Total	4,460	4,250	3,803	-14.7	-10.5
Regular & Lowfat, Hard	1,306	1,336	1,298	-0.6	-2.8
Nonfat, Hard	762	618	520	-31.8	-15.9
Other Frozen Dairy Products	413	692	667	61.5	-3.6
Mix for Frozen Products					
Ice Cream Mix	30,102	31,882	27,227	-9.6	-14.6
Ice Cream, Lowfat, Mix	12,531	13,118	13,249	5.7	1.0
Ice Cream, Nonfat, Mix	800	509	480	-40.0	-5.7
Sherbet Mix	2,533	2,199	2,087	-17.6	-5.1
Yogurt Mix	2,905	2,576	2,305	-20.7	-10.5

¹ Revised.

² Includes Cheddar, Colby, Monterey, and Jack.

³ Mostly used for processing into cream or lowfat cottage cheese.

⁴ Fat content 4 percent or more.

⁵ Fat content less than 4 percent.

⁶ Includes protein standardized and blends.

**Whey and Modified Whey Products: Production, Stocks,
and Prices, United States, December, 2005-2006**

Product	Dec 2005	Nov 2006 ¹	Dec 2006	Change From	
				Dec 2005	Nov 2006
Production					
	<i>1,000 Pounds</i>	<i>1,000 Pounds</i>	<i>1,000 Pounds</i>	<i>Percent</i>	<i>Percent</i>
Condensed Whey, Solids Content ²					
Sweet-Type, Human	8,718	8,249	9,589	10.0	16.2
Dry Whey Products					
Dry Whey, Human	80,232	80,325	86,860	8.3	8.1
Dry Whey, Animal	5,955	3,754	3,872	-35.0	3.1
Dry Whey, Total	86,187	84,079	90,732	5.3	7.9
Reduced Lactose and Minerals					
Human Food	3,592	3,265	3,942	9.7	20.7
Animal Feed	4,484	3,937	4,210	-6.1	6.9
Lactose, Human and Animal	56,736	60,567	60,395	6.4	-0.3
Whey					
Protein Concentrate					
Human ³	30,377	28,732	29,138	-4.1	1.4
Animal ³	4,245	4,140	5,174	21.9	25.0
Total ³	34,622	32,872	34,312	-0.9	4.4
25.0-49.9 Percent ⁴	25,017	22,673	23,398	-6.5	3.2
50.0-89.9 Percent ⁴	9,605	10,199	10,914	13.6	7.0
Protein Isolates ⁵	2,688	3,275	3,413	27.0	4.2
Manufacturers' Stocks End-of-Month ⁶					
	<i>1,000 Pounds</i>	<i>1,000 Pounds</i>	<i>1,000 Pounds</i>	<i>Percent</i>	<i>Percent</i>
Dry Whey Products					
Dry Whey, Human	36,867	30,605	34,100	-7.5	11.4
Dry Whey, Animal	3,717	1,442	1,307	-64.8	-9.4
Dry Whey, Total	40,584	32,047	35,407	-12.8	10.5
Reduced Lactose and Minerals					
Human and Animal ⁷	4,223	4,338	5,589	32.3	28.8
Lactose, Human and Animal	53,819	38,450	39,549	-26.5	2.9
Whey					
Protein Concentrate					
Human ³	29,222	25,324	26,734	-8.5	5.6
Animal ³	2,314	2,353	1,904	-17.7	-19.1
Total ³	31,536	27,677	28,638	-9.2	3.5
25.0-49.9 Percent ⁴	20,022	17,689	18,037	-9.9	2.0
50.0-89.9 Percent ⁴	11,514	9,988	10,601	-7.9	6.1
Manufacturers' Selling Price ⁸					
	<i>Cents per Pound</i>	<i>Cents per Pound</i>	<i>Cents per Pound</i>	<i>Cents Change</i>	<i>Cents Change</i>
Dry Whey, Animal	27.9	35.2	37.2	9.3	2.0

¹ Revised.

² Final marketable product only. Does not include quantity used or shipped to another plant for further processing into dry whey or modified whey products. Does not include sweet-type, animal whey.

³ Whey Protein Concentrate, 25.0 to 89.9 percent.

⁴ Whey Protein Concentrate, Human and Animal.

⁵ Whey Protein Isolate, 90.0 percent or greater.

⁶ Stocks held by manufacturers at all points and in transit.

⁷ Reduced lactose and minerals stocks combined to avoid disclosure of individual operations.

⁸ Prices for bulk goods, f.o.b. plant. Average monthly prices reported by firms.

**Dairy Products: Production by Product and Month,
United States, 2005-2006 ¹**

Product and Month	By Month			Cumulative		
	2005	2006	Change From 2005	2005	2006	Change From 2005
	<i>1,000 Pounds</i>	<i>1,000 Pounds</i>	<i>Percent</i>	<i>1,000 Pounds</i>	<i>1,000 Pounds</i>	<i>Percent</i>
Total Cheese						
Jan	753,967	772,337	2.4	753,967	772,337	2.4
Feb	704,633	720,978	2.3	1,458,600	1,493,315	2.4
Mar	797,511	812,634	1.9	2,256,111	2,305,949	2.2
Apr	754,849	786,477	4.2	3,010,960	3,092,426	2.7
May	783,943	811,591	3.5	3,794,903	3,904,017	2.9
Jun	764,468	793,937	3.9	4,559,371	4,697,954	3.0
Jul	739,472	767,436	3.8	5,298,843	5,465,390	3.1
Aug	757,402	788,908	4.2	6,056,245	6,254,298	3.3
Sep	745,485	784,276	5.2	6,801,730	7,038,574	3.5
Oct	760,407	800,338	5.3	7,562,137	7,838,912	3.7
Nov	766,061	791,127	3.3	8,328,198	8,630,039	3.6
Dec	798,909	828,973	3.8	9,127,107	9,459,012	3.6
American Cheese						
Jan	322,332	324,545	0.7	322,332	324,545	0.7
Feb	292,238	304,376	4.2	614,570	628,921	2.3
Mar	331,468	338,383	2.1	946,038	967,304	2.2
Apr	327,575	338,715	3.4	1,273,613	1,306,019	2.5
May	332,501	346,512	4.2	1,606,114	1,652,531	2.9
Jun	321,389	337,024	4.9	1,927,503	1,989,555	3.2
Jul	315,977	328,226	3.9	2,243,480	2,317,781	3.3
Aug	312,028	318,930	2.2	2,555,508	2,636,711	3.2
Sep	301,791	325,166	7.7	2,857,299	2,961,877	3.7
Oct	312,321	321,234	2.9	3,169,620	3,283,111	3.6
Nov	313,195	314,945	0.6	3,482,815	3,598,056	3.3
Dec	330,135	340,032	3.0	3,812,950	3,938,088	3.3
Cheddar Cheese						
Jan	261,868	265,809	1.5	261,868	265,809	1.5
Feb	237,987	246,344	3.5	499,855	512,153	2.5
Mar	268,668	270,553	0.7	768,523	782,706	1.8
Apr	262,787	273,664	4.1	1,031,310	1,056,370	2.4
May	265,569	275,298	3.7	1,296,879	1,331,668	2.7
Jun	258,211	268,350	3.9	1,555,090	1,600,018	2.9
Jul	252,709	267,088	5.7	1,807,799	1,867,106	3.3
Aug	245,144	252,126	2.8	2,052,943	2,119,232	3.2
Sep	239,629	258,688	8.0	2,292,572	2,377,920	3.7
Oct	248,910	250,616	0.7	2,541,482	2,628,536	3.4
Nov	248,464	250,509	0.8	2,789,946	2,879,045	3.2
Dec	262,469	274,766	4.7	3,052,415	3,153,811	3.3

See footnote(s) at end of table.

--continued

**Dairy Products: Production by Product and Month,
United States, 2005-2006 ¹ (continued)**

Product and Month	By Month			Cumulative		
	2005	2006	Change From 2005	2005	2006	Change From 2005
	<i>1,000 Pounds</i>	<i>1,000 Pounds</i>	<i>Percent</i>	<i>1,000 Pounds</i>	<i>1,000 Pounds</i>	<i>Percent</i>
Italian Cheese						
Jan	316,288	328,315	3.8	316,288	328,315	3.8
Feb	299,673	307,623	2.7	615,961	635,938	3.2
Mar	338,682	346,179	2.2	954,643	982,117	2.9
Apr	310,719	328,588	5.8	1,265,362	1,310,705	3.6
May	327,196	335,577	2.6	1,592,558	1,646,282	3.4
Jun	319,049	326,014	2.2	1,911,607	1,972,296	3.2
Jul	303,054	318,197	5.0	2,214,661	2,290,493	3.4
Aug	311,518	333,002	6.9	2,526,179	2,623,495	3.9
Sep	310,339	323,576	4.3	2,836,518	2,947,071	3.9
Oct	311,901	334,254	7.2	3,148,419	3,281,325	4.2
Nov	320,304	326,124	1.8	3,468,723	3,607,449	4.0
Dec	336,007	351,643	4.7	3,804,730	3,959,092	4.1
Mozzarella						
Jan	250,595	259,574	3.6	250,595	259,574	3.6
Feb	239,382	242,804	1.4	489,977	502,378	2.5
Mar	269,830	273,870	1.5	759,807	776,248	2.2
Apr	247,184	261,653	5.9	1,006,991	1,037,901	3.1
May	262,238	267,474	2.0	1,269,229	1,305,375	2.8
Jun	255,540	261,675	2.4	1,524,769	1,567,050	2.8
Jul	243,304	254,757	4.7	1,768,073	1,821,807	3.0
Aug	244,631	263,715	7.8	2,012,704	2,085,522	3.6
Sep	243,687	257,598	5.7	2,256,391	2,343,120	3.8
Oct	243,671	263,140	8.0	2,500,062	2,606,260	4.2
Nov	252,933	257,433	1.8	2,752,995	2,863,693	4.0
Dec	267,803	279,616	4.4	3,020,798	3,143,309	4.1
Other Italian						
Jan	65,693	68,741	4.6	65,693	68,741	4.6
Feb	60,291	64,819	7.5	125,984	133,560	6.0
Mar	68,852	72,309	5.0	194,836	205,869	5.7
Apr	63,535	66,935	5.4	258,371	272,804	5.6
May	64,958	68,103	4.8	323,329	340,907	5.4
Jun	63,509	64,339	1.3	386,838	405,246	4.8
Jul	59,750	63,440	6.2	446,588	468,686	4.9
Aug	66,887	69,287	3.6	513,475	537,973	4.8
Sep	66,652	65,978	-1.0	580,127	603,951	4.1
Oct	68,230	71,114	4.2	648,357	675,065	4.1
Nov	67,371	68,691	2.0	715,728	743,756	3.9
Dec	68,204	72,027	5.6	783,932	815,783	4.1

See footnote(s) at end of table.

--continued

**Dairy Products: Production by Product and Month,
United States, 2005-2006 ¹ (continued)**

Product and Month	By Month			Cumulative		
	2005	2006	Change From 2005	2005	2006	Change From 2005
	<i>1,000 Pounds</i>	<i>1,000 Pounds</i>	<i>Percent</i>	<i>1,000 Pounds</i>	<i>1,000 Pounds</i>	<i>Percent</i>
Butter						
Jan	128,020	147,251	15.0	128,020	147,251	15.0
Feb	116,927	136,953	17.1	244,947	284,204	16.0
Mar	122,402	141,993	16.0	367,349	426,197	16.0
Apr	117,061	128,457	9.7	484,410	554,654	14.5
May	120,715	128,126	6.1	605,125	682,780	12.8
Jun	106,559	100,779	-5.4	711,684	783,559	10.1
Jul	95,929	94,567	-1.4	807,613	878,126	8.7
Aug	93,194	88,325	-5.2	900,807	966,451	7.3
Sep	100,647	103,771	3.1	1,001,454	1,070,222	6.9
Oct	108,915	118,598	8.9	1,110,369	1,188,820	7.1
Nov	110,905	117,560	6.0	1,221,274	1,306,380	7.0
Dec	125,953	137,884	9.5	1,347,227	1,444,264	7.2
Nonfat Dry Milk, Human						
Jan	93,261	107,254	15.0	93,261	107,254	15.0
Feb	97,275	117,466	20.8	190,536	224,720	17.9
Mar	109,299	128,269	17.4	299,835	352,989	17.7
Apr	104,876	129,225	23.2	404,711	482,214	19.2
May	124,329	132,262	6.4	529,040	614,476	16.1
Jun	124,206	117,049	-5.8	653,246	731,525	12.0
Jul	108,865	88,227	-19.0	762,111	819,752	7.6
Aug	86,679	75,860	-12.5	848,790	895,612	5.5
Sep	70,954	64,888	-8.5	919,744	960,500	4.4
Oct	73,554	72,283	-1.7	993,298	1,032,783	4.0
Nov	89,095	80,018	-10.2	1,082,393	1,112,801	2.8
Dec	103,711	114,743	10.6	1,186,104	1,227,544	3.5
Total Dry Whey ²						
Jan	85,936	88,243	2.7	85,936	88,243	2.7
Feb	79,665	89,713	12.6	165,601	177,956	7.5
Mar	91,775	101,239	10.3	257,376	279,195	8.5
Apr	91,260	96,339	5.6	348,636	375,534	7.7
May	94,083	97,119	3.2	442,719	472,653	6.8
Jun	89,357	90,168	0.9	532,076	562,821	5.8
Jul	89,143	90,348	1.4	621,219	653,169	5.1
Aug	87,438	92,057	5.3	708,657	745,226	5.2
Sep	83,948	86,197	2.7	792,605	831,423	4.9
Oct	82,186	86,845	5.7	874,791	918,268	5.0
Nov	84,844	84,079	-0.9	959,635	1,002,347	4.5
Dec	86,187	90,732	5.3	1,045,822	1,093,079	4.5

See footnote(s) at end of table.

--continued

**Dairy Products: Production by Product and Month,
United States, 2005-2006 ¹ (continued)**

Product and Month	By Month			Cumulative		
	2005	2006	Change From 2005	2005	2006	Change From 2005
	<i>1,000 Pounds</i>	<i>1,000 Pounds</i>	<i>Percent</i>	<i>1,000 Pounds</i>	<i>1,000 Pounds</i>	<i>Percent</i>
Cream Cottage Cheese						
Jan	29,553	27,785	-6.0	29,553	27,785	-6.0
Feb	27,833	27,193	-2.3	57,386	54,978	-4.2
Mar	32,682	32,115	-1.7	90,068	87,093	-3.3
Apr	30,623	28,580	-6.7	120,691	115,673	-4.2
May	31,463	31,383	-0.3	152,154	147,056	-3.4
Jun	32,266	31,096	-3.6	184,420	178,152	-3.4
Jul	31,938	29,114	-8.8	216,358	207,266	-4.2
Aug	33,782	34,975	3.5	250,140	242,241	-3.2
Sep	33,011	30,703	-7.0	283,151	272,944	-3.6
Oct	30,269	30,137	-0.4	313,420	303,081	-3.3
Nov	28,679	28,960	1.0	342,099	332,041	-2.9
Dec	26,058	26,510	1.7	368,157	358,551	-2.6
Lowfat Cottage Cheese						
Jan	30,843	31,617	2.5	30,843	31,617	2.5
Feb	32,060	30,818	-3.9	62,903	62,435	-0.7
Mar	35,064	35,940	2.5	97,967	98,375	0.4
Apr	32,706	31,668	-3.2	130,673	130,043	-0.5
May	34,904	35,108	0.6	165,577	165,151	-0.3
Jun	35,362	33,458	-5.4	200,939	198,609	-1.2
Jul	32,436	32,960	1.6	233,375	231,569	-0.8
Aug	35,568	37,512	5.5	268,943	269,081	0.1
Sep	34,506	33,452	-3.1	303,449	302,533	-0.3
Oct	32,642	32,376	-0.8	336,091	334,909	-0.4
Nov	31,406	31,067	-1.1	367,497	365,976	-0.4
Dec	28,574	29,245	2.3	396,071	395,221	-0.2
Ice Cream, Regular, Hard						
Jan	62,103	61,826	-0.4	62,103	61,826	-0.4
Feb	65,827	62,916	-4.4	127,930	124,742	-2.5
Mar	78,753	77,869	-1.1	206,683	202,611	-2.0
Apr	78,091	77,408	-0.9	284,774	280,019	-1.7
May	78,375	82,128	4.8	363,149	362,147	-0.3
Jun	91,190	87,898	-3.6	454,339	450,045	-0.9
Jul	87,054	85,374	-1.9	541,393	535,419	-1.1
Aug	89,142	84,777	-4.9	630,535	620,196	-1.6
Sep	72,359	72,705	0.5	702,894	692,901	-1.4
Oct	69,862	64,360	-7.9	772,756	757,261	-2.0
Nov	61,133	56,749	-7.2	833,889	814,010	-2.4
Dec	54,854	49,396	-10.0	888,743	863,406	-2.9

See footnote(s) at end of table.

--continued

**Dairy Products: Production by Product and Month,
United States, 2005-2006 ¹ (continued)**

Product and Month	By Month			Cumulative		
	2005	2006	Change From 2005	2005	2006	Change From 2005
	<i>1,000 Gallons</i>	<i>1,000 Gallons</i>	<i>Percent</i>	<i>1,000 Gallons</i>	<i>1,000 Gallons</i>	<i>Percent</i>
Ice Cream, Lowfat						
Jan	24,199	25,444	5.1	24,199	25,444	5.1
Feb	26,181	24,134	-7.8	50,380	49,578	-1.6
Mar	32,927	31,475	-4.4	83,307	81,053	-2.7
Apr	33,192	32,054	-3.4	116,499	113,107	-2.9
May	33,123	37,226	12.4	149,622	150,333	0.5
Jun	38,572	41,999	8.9	188,194	192,332	2.2
Jul	36,928	36,919		225,122	229,251	1.8
Aug	35,592	37,658	5.8	260,714	266,909	2.4
Sep	30,745	30,862	0.4	291,459	297,771	2.2
Oct	27,013	29,908	10.7	318,472	327,679	2.9
Nov	23,770	22,837	-3.9	342,242	350,516	2.4
Dec	21,726	23,071	6.2	363,968	373,587	2.6
Ice Cream, NF, Hard						
Jan	1,205	1,330	10.4	1,205	1,330	10.4
Feb	1,715	1,254	-26.9	2,920	2,584	-11.5
Mar	1,686	1,607	-4.7	4,606	4,191	-9.0
Apr	1,682	1,324	-21.3	6,288	5,515	-12.3
May	1,730	1,486	-14.1	8,018	7,001	-12.7
Jun	1,923	1,402	-27.1	9,941	8,403	-15.5
Jul	2,188	1,349	-38.3	12,129	9,752	-19.6
Aug	1,910	1,358	-28.9	14,039	11,110	-20.9
Sep	1,611	1,018	-36.8	15,650	12,128	-22.5
Oct	1,538	1,022	-33.6	17,188	13,150	-23.5
Nov	1,319	759	-42.5	18,507	13,909	-24.8
Dec	1,153	743	-35.6	19,660	14,652	-25.5
Sherbet, Hard						
Jan	3,838	3,893	1.4	3,838	3,893	1.4
Feb	4,036	4,173	3.4	7,874	8,066	2.4
Mar	4,924	4,582	-6.9	12,798	12,648	-1.2
Apr	5,111	4,557	-10.8	17,909	17,205	-3.9
May	4,934	4,791	-2.9	22,843	21,996	-3.7
Jun	5,825	5,210	-10.6	28,668	27,206	-5.1
Jul	5,425	4,898	-9.7	34,093	32,104	-5.8
Aug	5,632	4,777	-15.2	39,725	36,881	-7.2
Sep	4,953	3,824	-22.8	44,678	40,705	-8.9
Oct	3,724	3,690	-0.9	48,402	44,395	-8.3
Nov	3,442	3,151	-8.5	51,844	47,546	-8.3
Dec	3,436	2,943	-14.3	55,280	50,489	-8.7

See footnote(s) at end of table.

--continued

**Dairy Products: Production by Product and Month,
United States, 2005-2006 ¹ (continued)**

Product and Month	By Month			Cumulative		
	2005	2006	Change From 2005	2005	2006	Change From 2005
	<i>1,000 Pounds</i>	<i>1,000 Pounds</i>	<i>Percent</i>	<i>1,000 Pounds</i>	<i>1,000 Pounds</i>	<i>Percent</i>
Sour Cream						
Jan	76,976	81,288	5.6	76,976	81,288	5.6
Feb	73,791	76,832	4.1	150,767	158,120	4.9
Mar	87,637	89,000	1.6	238,404	247,120	3.7
Apr	72,323	79,298	9.6	310,727	326,418	5.0
May	86,250	91,426	6.0	396,977	417,844	5.3
Jun	85,798	89,599	4.4	482,775	507,443	5.1
Jul	79,324	84,064	6.0	562,099	591,507	5.2
Aug	90,935	97,363	7.1	653,034	688,870	5.5
Sep	79,208	85,154	7.5	732,242	774,024	5.7
Oct	90,019	98,611	9.5	822,261	872,635	6.1
Nov	108,466	110,107	1.5	930,727	982,742	5.6
Dec	99,090	100,247	1.2	1,029,817	1,082,989	5.2

See footnote(s) at end of table.

--continued

**Dairy Products: Production by Product and Month,
United States, 2005-2006 ¹ (continued)**

Product and Month	By Month			Cumulative		
	2005	2006	Change From 2005	2005	2006	Change From 2005
	<i>1,000 Pounds</i>	<i>1,000 Pounds</i>	<i>Percent</i>	<i>1,000 Pounds</i>	<i>1,000 Pounds</i>	<i>Percent</i>
Yogurt						
Jan	224,187	252,353	12.6	224,187	252,353	12.6
Feb	236,193	238,108	0.8	460,380	490,461	6.5
Mar	275,949	280,577	1.7	736,329	771,038	4.7
Apr	247,409	254,096	2.7	983,738	1,025,134	4.2
May	264,459	267,283	1.1	1,248,197	1,292,417	3.5
Jun	263,178	272,551	3.6	1,511,375	1,564,968	3.5
Jul	244,608	255,765	4.6	1,755,983	1,820,733	3.7
Aug	265,359	283,584	6.9	2,021,342	2,104,317	4.1
Sep	273,643	267,407	-2.3	2,294,985	2,371,724	3.3
Oct	249,329	262,864	5.4	2,544,314	2,634,588	3.5
Nov	219,567	230,109	4.8	2,763,881	2,864,697	3.6
Dec	225,908	246,508	9.1	2,989,789	3,111,205	4.1

See footnote(s) at end of table.

--continued

**Dairy Products: Production by Product and Month,
United States, 2005-2006 ¹ (continued)**

Product and Month	By Month			Cumulative		
	2005	2006	Change From 2005	2005	2006	Change From 2005
	<i>1,000 Gallons</i>	<i>1,000 Gallons</i>	<i>Percent</i>	<i>1,000 Gallons</i>	<i>1,000 Gallons</i>	<i>Percent</i>
Frozen Yogurt						
Jan	4,353	4,131	-5.1	4,353	4,131	-5.1
Feb	4,910	4,524	-7.9	9,263	8,655	-6.6
Mar	5,942	6,044	1.7	15,205	14,699	-3.3
Apr	5,737	5,960	3.9	20,942	20,659	-1.4
May	6,239	6,663	6.8	27,181	27,322	0.5
Jun	6,412	6,882	7.3	33,593	34,204	1.8
Jul	5,867	6,240	6.4	39,460	40,444	2.5
Aug	6,142	6,852	11.6	45,602	47,296	3.7
Sep	5,456	5,145	-5.7	51,058	52,441	2.7
Oct	5,114	4,948	-3.2	56,172	57,389	2.2
Nov	4,419	4,250	-3.8	60,591	61,639	1.7
Dec	4,460	3,803	-14.7	65,051	65,442	0.6

¹ November 2006 data revised.

² Excludes all modified dry whey products.

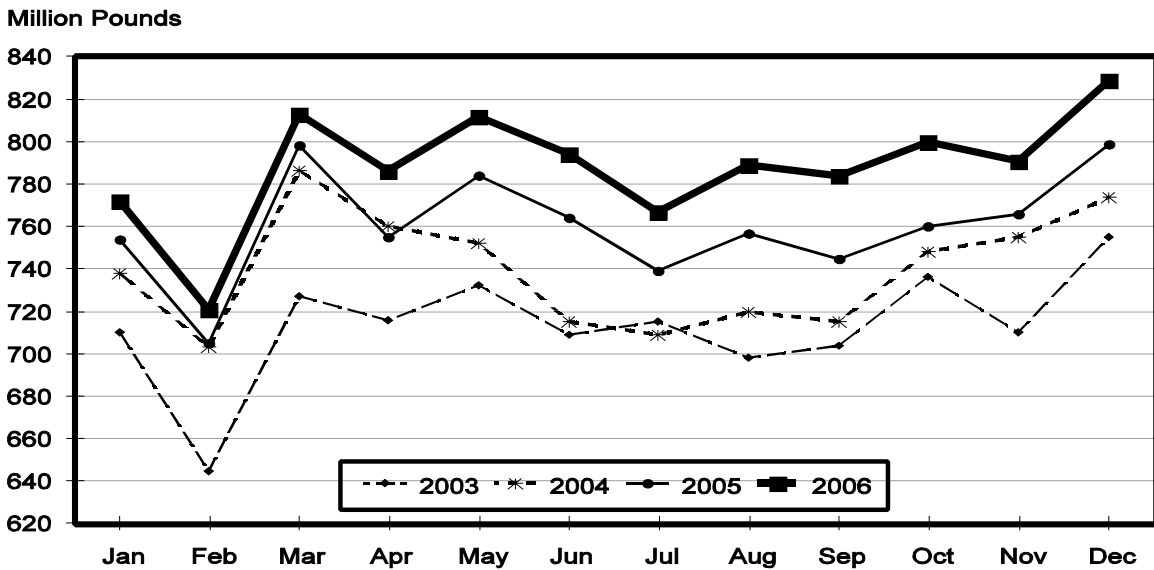
Total Cheese, Excluding Cottage Cheese: Production by State and United States, December 2005-2006

State	Dec 2005	Nov ¹ 2006	Dec 2006	Change From	
				Dec 2005	Nov 2006
	<i>1,000 Pounds</i>	<i>1,000 Pounds</i>	<i>1,000 Pounds</i>	<i>Percent</i>	<i>Percent</i>
CA	182,807	183,481	194,593	6.4	6.1
ID	68,511	69,417	67,966	-0.8	-2.1
IL	8,212	6,360	6,828	-16.9	7.4
IA	13,767	10,741	11,525	-16.3	7.3
MN	55,208	48,465	53,791	-2.6	11.0
NM		52,574	60,079		14.3
NY	59,003	64,154	61,259	3.8	-4.5
OH	17,615	16,104	16,693	-5.2	3.7
PA	34,355	30,910	31,912	-7.1	3.2
SD	15,374	14,644	15,336	-0.2	4.7
UT	5,940	7,303	8,368	40.9	14.6
WI	211,100	199,026	208,707	-1.1	4.9
Oth Sts ²	127,017	87,948	91,916		4.5
US	798,909	791,127	828,973	3.8	4.8
N Atl	107,481	109,686	107,235	-0.2	-2.2
S Atl	3,714	3,633	3,677	-1.0	1.2
E N Cen	250,759	233,826	248,696	-0.8	6.4
W N Cen	89,773	80,460	86,202	-4.0	7.1
S Cen	11,410	10,256	8,430	-26.1	-17.8
West	335,772	353,266	374,733	11.6	6.1

¹ Revised.

² States not shown when fewer than 3 plants reported or individual plant operations could be disclosed. Percent change shown only when comparable States are included in the calculation.

Total Cheese Production United States



American Cheese: Production by State and United States, December 2005-2006

State	Dec 2005	Nov ¹ 2006	Dec 2006	Change From	
				Dec 2005	Nov 2006
	<i>1,000 Pounds</i>	<i>1,000 Pounds</i>	<i>1,000 Pounds</i>	<i>Percent</i>	<i>Percent</i>
CA	70,366	66,898	68,902	-2.1	3.0
ID	49,424	49,593	51,458	4.1	3.8
IA	10,605	8,426	9,093	-14.3	7.9
MN	51,423	45,613	50,993	-0.8	11.8
OH	3,351	2,663	2,494	-25.6	-6.3
OR	8,991	9,363	9,966	10.8	6.4
WI	74,394	63,061	68,100	-8.5	8.0
Oth Sts ²	61,581	69,328	79,026	28.3	14.0
US	330,135	314,945	340,032	3.0	8.0
Atlantic	11,367	11,655	12,024	5.8	3.2
E N Cen	78,705	66,418	71,525	-9.1	7.7
W N Cen	70,179	62,006	68,379	-2.6	10.3
S Cen	5,260	2,923	3,759	-28.5	28.6
West	164,624	171,943	184,345	12.0	7.2

¹ Revised.

² States not shown when fewer than 3 plants reported or individual plant operations could be disclosed. Percent change shown only when comparable States are included in the calculation.

Cheddar Cheese: Production by State and United States, December 2005-2006

State	Dec 2005	Nov ¹ 2006	Dec 2006	Change From	
				Dec 2005	Nov 2006
	<i>1,000 Pounds</i>	<i>1,000 Pounds</i>	<i>1,000 Pounds</i>	<i>Percent</i>	<i>Percent</i>
CA	42,139	41,970	43,405	3.0	3.4
ID	44,819	46,321	48,080	7.3	3.8
MN	46,246	40,360	46,894	1.4	16.2
OH	2,077	1,867	1,753	-15.6	-6.1
WI	58,662	49,109	54,200	-7.6	10.4
Oth Sts ²	68,526	70,882	80,434	17.4	13.5
US	262,469	250,509	274,766	4.7	9.7
Atlantic	11,243	11,052	11,494	2.2	4.0
E N Cen	60,751	50,992	55,966	-7.9	9.8
W N Cen	59,428	52,192	59,216	-0.4	13.5
S Cen	5,259	2,922	3,758	-28.5	28.6
West	125,788	133,351	144,332	14.7	8.2

¹ Revised.

² States not shown when fewer than 3 plants reported or individual plant operations could be disclosed. Percent change shown only when comparable States are included in the calculation.

**Italian Cheese, Total: Production by State and
United States, December 2005-2006**

State	Dec 2005	Nov ¹ 2006	Dec 2006	Change From	
				Dec 2005	Nov 2006
	<i>1,000 Pounds</i>	<i>1,000 Pounds</i>	<i>1,000 Pounds</i>	<i>Percent</i>	<i>Percent</i>
CA	98,111	98,864	108,240	10.3	9.5
ID	11,129	12,017	11,586	4.1	-3.6
NY	32,088	32,064	33,712	5.1	5.1
PA	21,855	18,419	20,528	-6.1	11.5
SD	7,664	7,201	7,455	-2.7	3.5
WI	96,137	95,222	100,903	5.0	6.0
Oth Sts ²	69,023	62,337	69,219	0.3	11.0
US ³	336,007	326,124	351,643	4.7	7.8
Atlantic	63,536	59,225	62,924	-1.0	6.2
E N Cen	111,799	108,635	118,634	6.1	9.2
West	145,910	145,259	156,811	7.5	8.0

¹ Revised.

² States not shown when fewer than 3 plants reported or individual plant operations could be disclosed. Percent change shown only when comparable States are included in the calculation.

³ Region totals may not add to U.S. when compiled regions could not be disclosed.

Mozzarella Cheese: Production by State and United States, December 2005-2006

State	Dec 2005	Nov ¹ 2006	Dec 2006	Change From	
				Dec 2005	Nov 2006
	<i>1,000 Pounds</i>	<i>1,000 Pounds</i>	<i>1,000 Pounds</i>	<i>Percent</i>	<i>Percent</i>
CA	89,568	89,988	96,806	8.1	7.6
ID	9,464	10,447	9,880	4.4	-5.4
NY	15,224	14,110	15,941	4.7	13.0
PA	18,905	15,151	17,578	-7.0	16.0
WI	70,777	67,954	73,300	3.6	7.9
Oth Sts ²	63,865	59,783	66,111	3.5	10.6
US ³	267,803	257,433	279,616	4.4	8.6
Atlantic	39,925	35,343	39,600	-0.8	12.0
E N Cen	83,485	79,070	88,474	6.0	11.9
West	134,921	134,008	142,578	5.7	6.4

¹ Revised.

² States not shown when fewer than 3 plants reported or individual plant operations could be disclosed. Percent change shown only when comparable States are included in the calculation.

³ Region totals may not add to U.S. when compiled regions could not be disclosed.

Butter: Production by State and United States, December 2005-2006

State	Dec 2005	Nov ¹ 2006	Dec 2006	Change From	
				Dec 2005	Nov 2006
	<i>1,000 Pounds</i>	<i>1,000 Pounds</i>	<i>1,000 Pounds</i>	<i>Percent</i>	<i>Percent</i>
CA	40,829	36,447	43,866	7.4	20.4
NY	1,633	1,065	1,474	-9.7	38.4
PA	6,926	6,306	7,036	1.6	11.6
WI	35,395	30,496	34,800	-1.7	14.1
Oth Sts ²	41,170	43,246	50,708	23.2	17.3
US ³	125,953	117,560	137,884	9.5	17.3
N Atl	11,111	8,762	10,439	-6.0	19.1
E N Cen	38,719	34,660	38,895	0.5	12.2
W N Cen	6,382	9,549	13,332	108.9	39.6
West	58,597	53,737	62,784	7.1	16.8

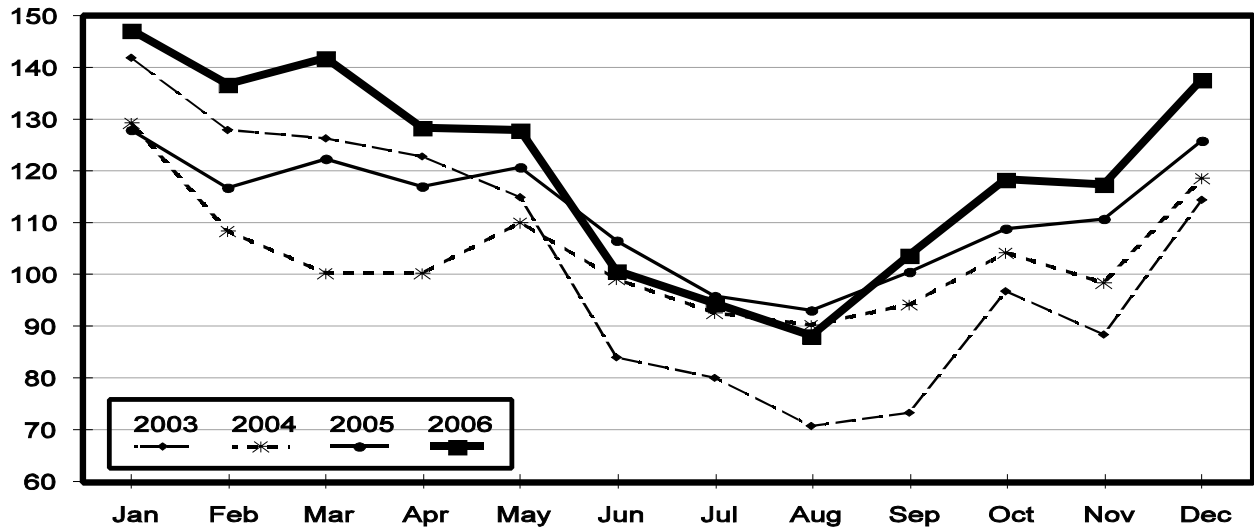
¹ Revised.

² States not shown when fewer than 3 plants reported or individual plant operations could be disclosed. Percent change shown only when comparable States are included in the calculation.

³ Region totals may not add to U.S. when compiled regions could not be disclosed.

Total Butter Production United States

Million Pounds



**Nonfat Dry Milk, Human: Production by State
and United States, December 2005-2006**

State	Dec 2005	Nov ¹ 2006	Dec 2006	Change From	
				Dec 2005	Nov 2006
	<i>1,000 Pounds</i>	<i>1,000 Pounds</i>	<i>1,000 Pounds</i>	<i>Percent</i>	<i>Percent</i>
CA	50,175	50,388	63,442	26.4	25.9
PA	7,420	3,484	7,638	2.9	119.2
Oth Sts ²	46,116	26,146	43,663	-5.3	67.0
US ³	103,711	80,018	114,743	10.6	43.4
Atlantic	15,269	5,666	12,992	-14.9	129.3
E N Cen	5,634	2,350	6,140	9.0	161.3
W N Cen	4,537	5,475	5,912	30.3	8.0
West	73,134	65,894	87,517	19.7	32.8

¹ Revised.

² States not shown when fewer than 3 plants reported or individual plant operations could be disclosed. Percent change shown only when comparable States are included in the calculation.

³ Region totals may not add to U.S. when compiled regions could not be disclosed.

**Dry Whey, Human: Production by State
and United States, December 2005-2006**

State	Dec 2005	Nov ¹ 2006	Dec 2006	Change From	
				Dec 2005	Nov 2006
	<i>1,000 Pounds</i>	<i>1,000 Pounds</i>	<i>1,000 Pounds</i>	<i>Percent</i>	<i>Percent</i>
CA	8,077	8,489	8,784	8.8	3.5
MN	3,938	4,742	5,040	28.0	6.3
NY	10,492	9,517	10,645	1.5	11.9
WI	26,577	23,244	24,200	-8.9	4.1
Oth Sts ²	31,148	34,333	38,191	22.6	11.2
US	80,232	80,325	86,860	8.3	8.1
Atlantic	19,406	17,035	19,096	-1.6	12.1
Central	39,610	36,886	39,344	-0.7	6.7
West	21,216	26,404	28,420	34.0	7.6

¹ Revised.

² States not shown when fewer than 3 plants reported or individual plant operations could be disclosed. Percent change shown only when comparable States are included in the calculation.

Ice Cream, Hard: Production by State and United States, December 2005-2006

State	Dec 2005	Nov ¹ 2006	Dec 2006	Change From	
				Dec 2005	Nov 2006
	<i>1,000 Gallons</i>	<i>1,000 Gallons</i>	<i>1,000 Gallons</i>	<i>Percent</i>	<i>Percent</i>
CA	7,082	8,786	7,551	6.6	-14.1
FL	1,552	1,400	1,450	-6.6	3.6
IN	4,737	5,821	5,006	5.7	-14.0
MD	815	750	673	-17.4	-10.3
MA	3,842	3,907	2,764	-28.1	-29.3
MN	2,829	3,261	2,590	-8.4	-20.6
MO	1,448	1,210	868	-40.1	-28.3
NY	1,305	1,748	1,656	26.9	-5.3
OH	1,361	1,462	1,526	12.1	4.4
OR	756	854	773	2.2	-9.5
PA	2,797	2,453	2,065	-26.2	-15.8
TN	959	784	924	-3.6	17.9
TX	3,712	3,434	3,321	-10.5	-3.3
UT	1,597	1,814	1,571	-1.6	-13.4
Oth Sts ²	20,062	19,065	16,658	-17.0	-12.6
US	54,854	56,749	49,396	-10.0	-13.0
N Atl	11,104	10,536	8,713	-21.5	-17.3
S Atl	4,210	3,512	3,741	-11.1	6.5
E N Cen	10,377	11,597	10,818	4.2	-6.7
W N Cen	10,417	10,582	8,289	-20.4	-21.7
S Cen	7,734	7,207	7,008	-9.4	-2.8
West	11,012	13,315	10,827	-1.7	-18.7

¹ Revised.

² States not shown when fewer than 3 plants reported or individual plant operations could be disclosed. Percent change shown only when comparable States are included in the calculation.

**Canned Milk and Dry Milk Products: Manufacturers' Shipments,
and Stocks, December, 2005-2006**

Product	Dec 2005	Nov 2006 ¹	Dec 2006	Change From	
				Dec 2005	Nov 2006
	Manufacturers' Shipments ²				
	<i>1,000 Pounds</i>	<i>1,000 Pounds</i>	<i>1,000 Pounds</i>	<i>Percent</i>	<i>Percent</i>
Nonfat Dry Milk, Human	75,083	60,290	68,141	-9.2	13.0
	Manufacturers' Stocks End-of-Month ³				
	<i>1,000 Pounds</i>	<i>1,000 Pounds</i>	<i>1,000 Pounds</i>	<i>Percent</i>	<i>Percent</i>
Canned Evaporated and Condensed Whole Milk	44,138	47,633	35,052	-20.6	-26.4
Nonfat Dry Milk, Human	114,050	41,405	79,826	-30.0	92.8
Dry Buttermilk, Total	12,660	3,973	5,097	-59.7	28.3

¹ Revised.

² For dry products, shipments of bulk goods only.

³ Stocks held by manufacturers at all points and in transit.

Procedures and Reliability: Estimates included in this report are based on data provided each month by manufacturers of these products. In 32 States, the State Departments of Agriculture assist in collection of data, which eliminates duplicate reporting and reduces respondent burden. Data are collected by mail, personal and telephone interviews following the close of each month. There were 1,081 manufacturers that made one or more products in 2006. Each month, reports are generally received from all dairy plants in States with small numbers of plants. In States with large numbers of plants, survey procedures are designed to obtain monthly reports from all large plants and from a sample of small plants. Monthly estimates are based upon returns from about 70 percent of the plants which account for 70 to 90 percent of the total production of major dairy products.

Revision Policy: Monthly estimates are subject to revision the month following the preliminary estimates. Annual estimates are published in the "**Dairy Products**" report published each April which includes any revisions made to current and previous year. An attempt is made to get information from all plants for preparing these estimates

Information Contacts

Listed below are the commodity specialists in the Livestock Branch of the National Agricultural Statistics Service to contact for additional information.

Dan Kerestes, Chief, Livestock Branch	(202) 720-3570
William Weaver, Head, Livestock Section	(202) 720-3570
Bruce Boess - Hogs and Pigs	(202) 720-3106
Shawn Clark - Dairy Products	(202) 690-3236
Jason Hardegree - Milk Production and Milk Cows	(202) 720-3278
Scott Hollis - Sheep & Lambs, Goats	(202) 720-4751
Mike Miller - Cattle, Cattle on Feed	(202) 720-3040
Katy Paulsen - Livestock Slaughter	(515) 284-4340
Charmaine Wilson - Dairy Products Prices	(202) 690-2168

ACCESS TO REPORTS!!

For your convenience, there are several ways to obtain NASS reports, data products, and services:

INTERNET ACCESS

All NASS reports are available free of charge on the worldwide Internet. For access, connect to the Internet and go to the NASS Home Page at: www.nass.usda.gov.

E-MAIL SUBSCRIPTION

All NASS reports are available by subscription free of charge direct to your e-mail address. Starting with the NASS Home Page at www.nass.usda.gov, under the right navigation, *Receive reports by Email*, click on **National** or **State**. Follow the instructions on the screen.

PRINTED REPORTS OR DATA PRODUCTS

CALL OUR TOLL-FREE ORDER DESK: 800-999-6779 (U.S. and Canada)
Other areas, please call 703-605-6220 FAX: 703-605-6900
(Visa, MasterCard, check, or money order acceptable for payment.)

ASSISTANCE

For **assistance** with general agricultural statistics or further information about NASS or its products or services, contact the **Agricultural Statistics Hotline** at **800-727-9540**, 7:30 a.m. to 4:00 p.m. ET, or e-mail: nass@nass.usda.gov.

The U.S. Department of Agriculture (USDA) prohibits discrimination in all its programs and activities on the basis of race, color, national origin, age, disability, and where applicable, sex, marital status, familial status, parental status, religion, sexual orientation, genetic information, political beliefs, reprisal, or because all or a part of an individual's income is derived from any public assistance program. (Not all prohibited bases apply to all programs.) Persons with disabilities who require alternative means for communication of program information (Braille, large print, audiotape, etc.) should contact USDA's TARGET Center at (202) 720-2600 (voice and TDD).

To file a complaint of discrimination, write to USDA, Director, Office of Civil Rights, 1400 Independence Avenue, S.W., Washington, D.C. 20250-9410, or call (800) 795-3272 (voice) or (202) 720-6382 (TDD). USDA is an equal opportunity provider and employer.