



NASS

FACT FINDERS FOR AGRICULTURE
UNITED STATES DEPARTMENT OF AGRICULTURE

Washington, D.C.

Dairy Products

Released March 2, 2007, by the National Agricultural Statistics Service (NASS), Agricultural Statistics Board, U.S. Department of Agriculture. For information on *Dairy Products* call Shawn Clark at (202) 690-3236, office hours 7:30 a.m. to 4:00 p.m. ET.

January 2007 Highlights

Total cheese output (excluding cottage cheese) was 824 million pounds, 6.7 percent above January 2006 but 0.8 percent below December 2006.

Italian type cheese production totaled 350 million pounds, 6.6 percent above January 2006 but 1.0 percent below December 2006.

American type cheese production totaled 343 million pounds, 5.6 percent above January 2006 and 1.0 percent above December 2006.

Butter production was 151 million pounds, 2.5 percent above January 2006 and 10.0 percent above December 2006.

Dry Milk Powders: (comparisons with January 2006)

Nonfat dry milk, human --- 111 million pounds, up 3.3 percent.

Skim milk powders --- 9.21 million pounds, down 68.6 percent.

Whey products: (comparisons with January 2006)

Dry whey, total --- 96.0 million pounds, up 8.8 percent.

Lactose, human and animal --- 65.0 million pounds, up 9.5 percent.

Whey protein concentrate, total --- 33.4 million pounds, down 5.4 percent.

Frozen products: (comparisons with January 2006)

Ice cream, Regular (hard) --- 62.0 million gallons, up 0.3 percent.

Ice cream, Lowfat (total) --- 27.1 million gallons, up 6.5 percent.

Sherbet (hard) --- 3.32 million gallons, down 14.6 percent.

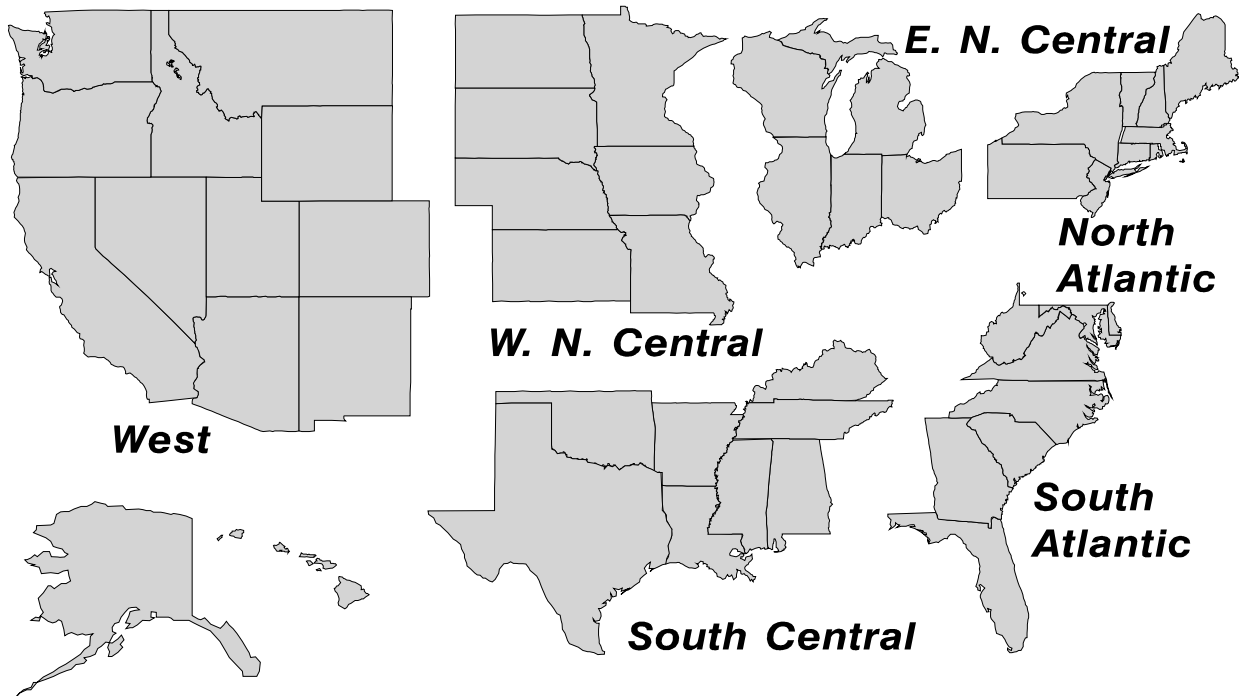
Frozen Yogurt (total) --- 4.73 million gallons, up 14.5 percent.

Special Note

Beginning with current Dairy Products release, several of the cumulative production tables will be reordered due to changes in the dairy products included in these tables. Also, regional data for state level production tables will be further combined due to confidentiality concerns.

U. S. Geographic Regions Dairy Products

If we are not able to publish a region for confidentiality reasons, it will be combined with other regions when possible. For example, if North Atlantic can not be published, then it will be combined with South Atlantic to publish Atlantic. The West North Central and East North Central will be combined, if necessary, to form North Central. In the event that neither could be published, they may be combined with South Central to publish Central. Some tables will have only limited regions shown, therefore the regions may not add to the United States total.



Contents

	Page
Dairy Products: Production by Product, United States	1
Whey and Modified Whey Products: Production, Stocks, and Prices, United States	2
Dairy Products: Production by Product and Month, United States	3
Select Commodities by State and United States	10
Canned Milk and Dry Milk Products: Manufacturer's Shipments, Stocks, and Selling Prices	15
Procedures and Reliability	16
Information Contacts	16

**Dairy Products: Production by Product,
United States, January, 2006-2007**

Product	Jan 2006	Dec 2006 ¹	Jan 2007	Change From	
				Jan 2006	Dec 2006
	<i>1,000 Pounds</i>	<i>1,000 Pounds</i>	<i>1,000 Pounds</i>	<i>Percent</i>	<i>Percent</i>
Butter	147,251	137,239	150,962	2.5	10.0
Cheese					
American Types ²	324,545	339,367	342,673	5.6	1.0
Cheddar	265,809	274,128	273,818	3.0	-0.1
Swiss	26,154	27,181	27,093	3.6	-0.3
Brick and Muenster	8,143	8,580	8,837	8.5	3.0
Cream and Neufchatel	54,300	62,985	57,267	5.5	-9.1
Hispanic	13,523	14,699	14,832	9.7	0.9
Mozzarella	259,574	279,556	277,582	6.9	-0.7
Other Italian Types	68,741	74,212	72,520	5.5	-2.3
Total Italian Types	328,315	353,768	350,102	6.6	-1.0
All Other Types	17,357	23,566	23,026	32.7	-2.3
Total	772,337	830,146	823,830	6.7	-0.8
Cottage Cheese, Curd ³	35,247	34,426	38,869	10.3	12.9
Cottage Cheese, Cream ⁴	27,785	26,399	29,495	6.2	11.7
Cottage Cheese, Lowfat ⁵	31,617	29,174	34,675	9.7	18.9
Canned Evaporated and Condensed Whole Milk	35,578	38,458	38,868	9.2	1.1
Dry Whole Milk	2,338	2,659	2,279	-2.5	-14.3
Nonfat Dry Milk, Human	107,254	114,743	110,800	3.3	-3.4
Skim Milk Powders ⁶	29,334	15,356	9,210	-68.6	-40.0
Dry Skim Milk, Animal	428	764	321	-25.0	-58.0
Dry Buttermilk	7,079	6,431	7,226	2.1	12.4
Sour Cream	81,288	100,032	90,129	10.9	-9.9
Yogurt, Plain & Flavored	252,353	247,096	279,329	10.7	13.0
	<i>1,000 Gallons</i>	<i>1,000 Gallons</i>	<i>1,000 Gallons</i>	<i>Percent</i>	<i>Percent</i>
Frozen Products					
Ice Cream, Regular, Hard	61,826	50,475	62,004	0.3	22.8
Ice Cream, Lowfat, Hard	8,249	7,938	10,821	31.2	36.3
Ice Cream, Lowfat, Soft	17,195	15,329	16,287	-5.3	6.2
Ice Cream, Lowfat, Total	25,444	23,267	27,108	6.5	16.5
Ice Cream, Nonfat, Hard	1,330	743	1,244	-6.5	67.4
Sherbet, Hard	3,893	2,846	3,324	-14.6	16.8
Water and Juice Ices	4,861	2,066	4,677	-3.8	126.4
Frozen Yogurt, Total	4,131	3,797	4,731	14.5	24.6
Regular & Lowfat, Hard	1,103	1,293	1,576	42.9	21.9
Nonfat, Hard	919	521	725	-21.1	39.2
Other Frozen Dairy Products	550	633	854	55.3	34.9
Mix for Frozen Products					
Ice Cream Mix	34,385	27,627	36,845	7.2	33.4
Ice Cream, Lowfat, Mix	14,056	13,357	15,448	9.9	15.7
Ice Cream, Nonfat, Mix	867	420	739	-14.8	76.0
Sherbet Mix	2,994	2,075	2,542	-15.1	22.5
Yogurt Mix	2,430	2,301	2,867	18.0	24.6

¹ Revised.

² Includes Cheddar, Colby, Monterey, and Jack.

³ Mostly used for processing into cream or lowfat cottage cheese.

⁴ Fat content 4 percent or more.

⁵ Fat content less than 4 percent.

⁶ Includes protein standardized and blends.

**Whey and Modified Whey Products: Production, Stocks,
and Prices, United States, January, 2006-2007**

Product	Jan 2006	Dec 2006 ¹	Jan 2007	Change From	
				Jan 2006	Dec 2006
Production					
	<i>1,000 Pounds</i>	<i>1,000 Pounds</i>	<i>1,000 Pounds</i>	<i>Percent</i>	<i>Percent</i>
Condensed Whey, Solids Content ²					
Sweet-Type, Human	8,334	9,589	10,415	25.0	8.6
Dry Whey Products					
Dry Whey, Human	82,169	87,337	92,391	12.4	5.8
Dry Whey, Animal	6,074	3,791	3,657	-39.8	-3.5
Dry Whey, Total	88,243	91,128	96,048	8.8	5.4
Reduced Lactose and Minerals					
Human Food	3,760	3,942	4,043	7.5	2.6
Animal Feed	4,061	4,210	4,281	5.4	1.7
Lactose, Human and Animal	59,377	60,375	65,019	9.5	7.7
Whey					
Protein Concentrate					
Human ³	30,242	30,302	29,584	-2.2	-2.4
Animal ³	5,038	4,571	3,800	-24.6	-16.9
Total ³	35,280	34,873	33,384	-5.4	-4.3
25.0-49.9 Percent ⁴	25,633	23,976	22,585	-11.9	-5.8
50.0-89.9 Percent ⁴	9,647	10,897	10,799	11.9	-0.9
Protein Isolates ⁵	2,647	3,388	3,446	30.2	1.7
Manufacturers' Stocks End-of-Month ⁶					
	<i>1,000 Pounds</i>	<i>1,000 Pounds</i>	<i>1,000 Pounds</i>	<i>Percent</i>	<i>Percent</i>
Dry Whey Products					
Dry Whey, Human	37,528	35,145	32,848	-12.5	-6.5
Dry Whey, Animal	3,555	1,307	1,797	-49.5	37.5
Dry Whey, Total	41,083	36,452	34,645	-15.7	-5.0
Reduced Lactose and Minerals					
Human and Animal ⁷	4,696	5,589	6,534	39.1	16.9
Lactose, Human and Animal	44,055	39,570	42,548	-3.4	7.5
Whey					
Protein Concentrate					
Human ³	31,375	27,149	25,978	-17.2	-4.3
Animal ³	2,388	1,904	1,835	-23.2	-3.6
Total ³	33,763	29,053	27,813	-17.6	-4.3
25.0-49.9 Percent ⁴	20,689	18,452	17,665	-14.6	-4.3
50.0-89.9 Percent ⁴	13,074	10,601	10,148	-22.4	-4.3
Manufacturers' Selling Price ⁸					
	<i>Cents per Pound</i>	<i>Cents per Pound</i>	<i>Cents per Pound</i>	<i>Cents Change</i>	<i>Cents Change</i>
Dry Whey, Animal	30.6	37.2	40.5	9.9	3.3

¹ Revised.

² Final marketable product only. Does not include quantity used or shipped to another plant for further processing into dry whey or modified whey products. Does not include sweet-type, animal whey.

³ Whey Protein Concentrate, 25.0 to 89.9 percent.

⁴ Whey Protein Concentrate, Human and Animal.

⁵ Whey Protein Isolate, 90.0 percent or greater.

⁶ Stocks held by manufacturers at all points and in transit.

⁷ Reduced lactose and minerals stocks combined to avoid disclosure of individual operations.

⁸ Prices for bulk goods, f.o.b. plant. Average monthly prices reported by firms.

**Dairy Products: Production by Product and Month,
United States, 2006-2007 ¹**

Product and Month	By Month			Cumulative		
	2006	2007	Change From 2006	2006	2007	Change From 2006
	<i>1,000 Pounds</i>	<i>1,000 Pounds</i>	<i>Percent</i>	<i>1,000 Pounds</i>	<i>1,000 Pounds</i>	<i>Percent</i>
Total Cheese						
Jan	772,337	823,830	6.7	772,337	823,830	6.7
Feb	720,978			1,493,315		
Mar	812,634			2,305,949		
Apr	786,477			3,092,426		
May	811,591			3,904,017		
Jun	793,937			4,697,954		
Jul	767,436			5,465,390		
Aug	788,908			6,254,298		
Sep	784,276			7,038,574		
Oct	800,338			7,838,912		
Nov	791,127			8,630,039		
Dec	830,146			9,460,185		
American Cheese						
Jan	324,545	342,673	5.6	324,545	342,673	5.6
Feb	304,376			628,921		
Mar	338,383			967,304		
Apr	338,715			1,306,019		
May	346,512			1,652,531		
Jun	337,024			1,989,555		
Jul	328,226			2,317,781		
Aug	318,930			2,636,711		
Sep	325,166			2,961,877		
Oct	321,234			3,283,111		
Nov	314,945			3,598,056		
Dec	339,367			3,937,423		
Cheddar Cheese						
Jan	265,809	273,818	3.0	265,809	273,818	3.0
Feb	246,344			512,153		
Mar	270,553			782,706		
Apr	273,664			1,056,370		
May	275,298			1,331,668		
Jun	268,350			1,600,018		
Jul	267,088			1,867,106		
Aug	252,126			2,119,232		
Sep	258,688			2,377,920		
Oct	250,616			2,628,536		
Nov	250,509			2,879,045		
Dec	274,128			3,153,173		

See footnote(s) at end of table.

--continued

**Dairy Products: Production by Product and Month,
United States, 2006-2007¹ (continued)**

Product and Month	By Month			Cumulative		
	2006	2007	Change From 2006	2006	2007	Change From 2006
	<i>1,000 Pounds</i>	<i>1,000 Pounds</i>	<i>Percent</i>	<i>1,000 Pounds</i>	<i>1,000 Pounds</i>	<i>Percent</i>
Italian Cheese						
Jan	328,315	350,102	6.6	328,315	350,102	6.6
Feb	307,623			635,938		
Mar	346,179			982,117		
Apr	328,588			1,310,705		
May	335,577			1,646,282		
Jun	326,014			1,972,296		
Jul	318,197			2,290,493		
Aug	333,002			2,623,495		
Sep	323,576			2,947,071		
Oct	334,254			3,281,325		
Nov	326,124			3,607,449		
Dec	353,768			3,961,217		
Mozzarella						
Jan	259,574	277,582	6.9	259,574	277,582	6.9
Feb	242,804			502,378		
Mar	273,870			776,248		
Apr	261,653			1,037,901		
May	267,474			1,305,375		
Jun	261,675			1,567,050		
Jul	254,757			1,821,807		
Aug	263,715			2,085,522		
Sep	257,598			2,343,120		
Oct	263,140			2,606,260		
Nov	257,433			2,863,693		
Dec	279,556			3,143,249		
Other Italian						
Jan	68,741	72,520	5.5	68,741	72,520	5.5
Feb	64,819			133,560		
Mar	72,309			205,869		
Apr	66,935			272,804		
May	68,103			340,907		
Jun	64,339			405,246		
Jul	63,440			468,686		
Aug	69,287			537,973		
Sep	65,978			603,951		
Oct	71,114			675,065		
Nov	68,691			743,756		
Dec	74,212			817,968		

See footnote(s) at end of table.

--continued

**Dairy Products: Production by Product and Month,
United States, 2006-2007 ¹ (continued)**

Product and Month	By Month			Cumulative		
	2006	2007	Change From 2006	2006	2007	Change From 2006
	<i>1,000 Pounds</i>	<i>1,000 Pounds</i>	<i>Percent</i>	<i>1,000 Pounds</i>	<i>1,000 Pounds</i>	<i>Percent</i>
Butter						
Jan	147,251	150,962	2.5	147,251	150,962	2.5
Feb	136,953			284,204		
Mar	141,993			426,197		
Apr	128,457			554,654		
May	128,126			682,780		
Jun	100,779			783,559		
Jul	94,567			878,126		
Aug	88,325			966,451		
Sep	103,771			1,070,222		
Oct	118,598			1,188,820		
Nov	117,560			1,306,380		
Dec	137,239			1,443,619		
Nonfat Dry Milk, Human						
Jan	107,254	110,800	3.3	107,254	110,800	3.3
Feb	117,466			224,720		
Mar	128,269			352,989		
Apr	129,225			482,214		
May	132,262			614,476		
Jun	117,049			731,525		
Jul	88,227			819,752		
Aug	75,860			895,612		
Sep	64,888			960,500		
Oct	72,283			1,032,783		
Nov	80,018			1,112,801		
Dec	114,743			1,227,544		
Skim Milk Powders ²						
Jan	29,334	9,210	-68.6	29,334	9,210	-68.6
Feb	25,628			54,962		
Mar	19,989			74,951		
Apr	12,411			87,362		
May	18,144			105,506		
Jun	22,356			127,862		
Jul	29,344			157,206		
Aug	24,088			181,294		
Sep	21,343			202,637		
Oct	27,395			230,032		
Nov	24,981			255,013		
Dec	15,356			270,369		

See footnote(s) at end of table.

--continued

**Dairy Products: Production by Product and Month,
United States, 2006-2007 ¹ (continued)**

Product and Month	By Month			Cumulative		
	2006	2007	Change From 2006	2006	2007	Change From 2006
	<i>1,000 Pounds</i>	<i>1,000 Pounds</i>	<i>Percent</i>	<i>1,000 Pounds</i>	<i>1,000 Pounds</i>	<i>Percent</i>
Dry Whey, Total ³						
Jan	88,243	96,048	8.8	88,243	96,048	8.8
Feb	89,713			177,956		
Mar	101,239			279,195		
Apr	96,339			375,534		
May	97,119			472,653		
Jun	90,168			562,821		
Jul	90,348			653,169		
Aug	92,057			745,226		
Sep	86,197			831,423		
Oct	86,845			918,268		
Nov	84,079			1,002,347		
Dec	91,128			1,093,475		
Lactose, Human and Animal						
Jan	59,377	65,019	9.5	59,377	65,019	9.5
Feb	51,855			111,232		
Mar	58,145			169,377		
Apr	58,106			227,483		
May	60,475			287,958		
Jun	56,335			344,293		
Jul	55,139			399,432		
Aug	59,593			459,025		
Sep	56,308			515,333		
Oct	62,278			577,611		
Nov	60,567			638,178		
Dec	60,375			698,553		
Whey Protein Concentrate, Total						
Jan	35,280	33,384	-5.4	35,280	33,384	-5.4
Feb	32,984			68,264		
Mar	35,592			103,856		
Apr	35,577			139,433		
May	35,694			175,127		
Jun	34,411			209,538		
Jul	33,899			243,437		
Aug	33,735			277,172		
Sep	33,611			310,783		
Oct	34,221			345,004		
Nov	32,872			377,876		
Dec	34,873			412,749		

See footnote(s) at end of table.

--continued

**Dairy Products: Production by Product and Month,
United States, 2006-2007 ¹ (continued)**

Product and Month	By Month			Cumulative		
	2006	2007	Change From 2006	2006	2007	Change From 2006
	<i>1,000 Pounds</i>	<i>1,000 Pounds</i>	<i>Percent</i>	<i>1,000 Pounds</i>	<i>1,000 Pounds</i>	<i>Percent</i>
Cream Cottage Cheese						
Jan	27,785	29,495	6.2	27,785	29,495	6.2
Feb	27,193			54,978		
Mar	32,115			87,093		
Apr	28,580			115,673		
May	31,383			147,056		
Jun	31,096			178,152		
Jul	29,114			207,266		
Aug	34,975			242,241		
Sep	30,703			272,944		
Oct	30,137			303,081		
Nov	28,960			332,041		
Dec	26,399			358,440		
Lowfat Cottage Cheese						
Jan	31,617	34,675	9.7	31,617	34,675	9.7
Feb	30,818			62,435		
Mar	35,940			98,375		
Apr	31,668			130,043		
May	35,108			165,151		
Jun	33,458			198,609		
Jul	32,960			231,569		
Aug	37,512			269,081		
Sep	33,452			302,533		
Oct	32,376			334,909		
Nov	31,067			365,976		
Dec	29,174			395,150		
Sour Cream						
Jan	81,288	90,129	10.9	81,288	90,129	10.9
Feb	76,832			158,120		
Mar	89,000			247,120		
Apr	79,298			326,418		
May	91,426			417,844		
Jun	89,599			507,443		
Jul	84,064			591,507		
Aug	97,363			688,870		
Sep	85,154			774,024		
Oct	98,611			872,635		
Nov	110,107			982,742		
Dec	100,032			1,082,774		

See footnote(s) at end of table.

--continued

**Dairy Products: Production by Product and Month,
United States, 2006-2007 ¹ (continued)**

Product and Month	By Month			Cumulative		
	2006	2007	Change From 2006	2006	2007	Change From 2006
	<i>1,000 Gallons</i>	<i>1,000 Gallons</i>	<i>Percent</i>	<i>1,000 Gallons</i>	<i>1,000 Gallons</i>	<i>Percent</i>
Ice Cream, Regular, Hard						
Jan	61,826	62,004	0.3	61,826	62,004	0.3
Feb	62,916			124,742		
Mar	77,869			202,611		
Apr	77,408			280,019		
May	82,128			362,147		
Jun	87,898			450,045		
Jul	85,374			535,419		
Aug	84,777			620,196		
Sep	72,705			692,901		
Oct	64,360			757,261		
Nov	56,749			814,010		
Dec	50,475			864,485		
Ice Cream, Lowfat, Total						
Jan	25,444	27,108	6.5	25,444	27,108	6.5
Feb	24,134			49,578		
Mar	31,475			81,053		
Apr	32,054			113,107		
May	37,226			150,333		
Jun	41,999			192,332		
Jul	36,919			229,251		
Aug	37,658			266,909		
Sep	30,862			297,771		
Oct	29,908			327,679		
Nov	22,837			350,516		
Dec	23,267			373,783		
Sherbet, Hard						
Jan	3,893	3,324	-14.6	3,893	3,324	-14.6
Feb	4,173			8,066		
Mar	4,582			12,648		
Apr	4,557			17,205		
May	4,791			21,996		
Jun	5,210			27,206		
Jul	4,898			32,104		
Aug	4,777			36,881		
Sep	3,824			40,705		
Oct	3,690			44,395		
Nov	3,151			47,546		
Dec	2,846			50,392		

See footnote(s) at end of table.

--continued

**Dairy Products: Production by Product and Month,
United States, 2006-2007 ¹ (continued)**

Product and Month	By Month			Cumulative		
	2006	2007	Change From 2006	2006	2007	Change From 2006
	<i>1,000 Pounds</i>	<i>1,000 Pounds</i>	<i>Percent</i>	<i>1,000 Pounds</i>	<i>1,000 Pounds</i>	<i>Percent</i>
Yogurt, Plain & Flavored						
Jan	252,353	279,329	10.7	252,353	279,329	10.7
Feb	238,108			490,461		
Mar	280,577			771,038		
Apr	254,096			1,025,134		
May	267,283			1,292,417		
Jun	272,551			1,564,968		
Jul	255,765			1,820,733		
Aug	283,584			2,104,317		
Sep	267,407			2,371,724		
Oct	262,864			2,634,588		
Nov	230,109			2,864,697		
Dec	247,096			3,111,793		
	<i>1,000 Gallons</i>	<i>1,000 Gallons</i>	<i>Percent</i>	<i>1,000 Gallons</i>	<i>1,000 Gallons</i>	<i>Percent</i>
Yogurt, Frozen						
Jan	4,131	4,731	14.5	4,131	4,731	14.5
Feb	4,524			8,655		
Mar	6,044			14,699		
Apr	5,960			20,659		
May	6,663			27,322		
Jun	6,882			34,204		
Jul	6,240			40,444		
Aug	6,852			47,296		
Sep	5,145			52,441		
Oct	4,948			57,389		
Nov	4,250			61,639		
Dec	3,797			65,436		

¹ December 2006 data revised.

² Includes protein standardized and blends.

³ Excludes all modified dry whey products.

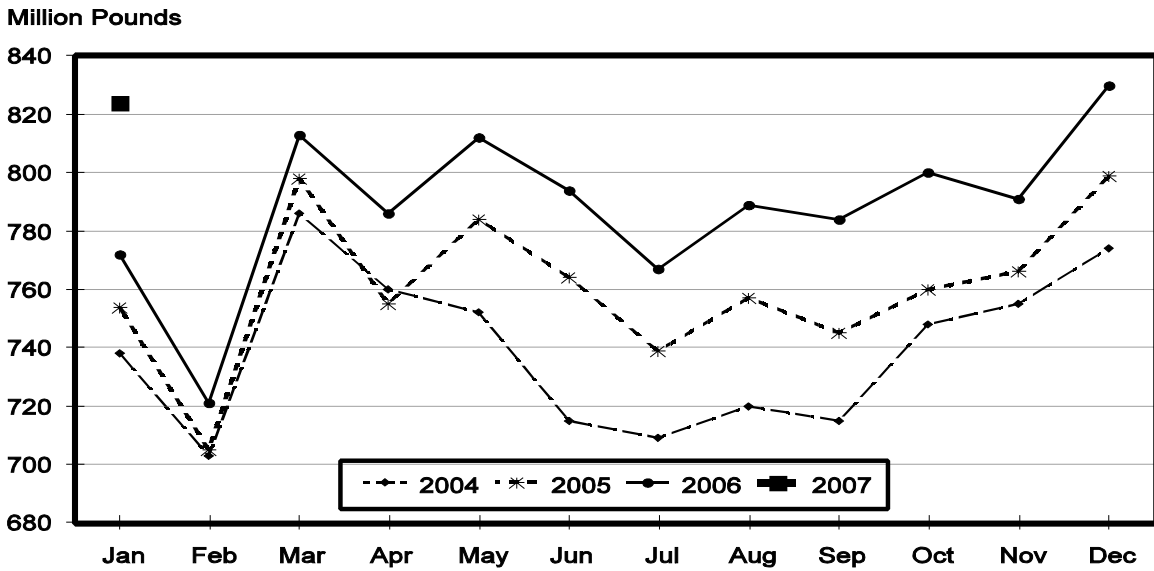
Total Cheese, Excluding Cottage Cheese: Production by State and United States, January 2006-2007

State	Jan 2006	Dec ¹ 2006	Jan 2007	Change From	
				Jan 2006	Dec 2006
	<i>1,000 Pounds</i>	<i>1,000 Pounds</i>	<i>1,000 Pounds</i>	<i>Percent</i>	<i>Percent</i>
CA	179,092	194,593	198,983	11.1	2.3
ID	65,576	67,874	71,994	9.8	6.1
IL	7,353	6,970	6,308	-14.2	-9.5
IA	13,605	11,822	11,641	-14.4	-1.5
MN	55,620	53,808	54,093	-2.7	0.5
NM		58,674	57,832		-1.4
NY	56,761	61,254	57,690	1.6	-5.8
OH	17,555	16,688	16,706	-4.8	0.1
PA	31,547	31,907	31,661	0.4	-0.8
SD	14,630	15,336	15,517	6.1	1.2
UT	5,015	8,368	8,552	70.5	2.2
WI	203,098	210,936	201,826	-0.6	-4.3
Oth Sts ²	122,485	91,916	91,027		-1.0
US	772,337	830,146	823,830	6.7	-0.8
Atlantic	105,899	110,899	108,371	2.3	-2.3
Central	339,615	346,011	335,788	-1.1	-3.0
West	326,823	373,236	379,671	16.2	1.7

¹ Revised.

² States not shown when fewer than 3 plants reported or individual plant operations could be disclosed. Percent change shown only when comparable States are included in the calculation.

Total Cheese Production United States



American Cheese: Production by State and United States, January 2006-2007

State	Jan 2006	Dec ¹ 2006	Jan 2007	Change From	
				Jan 2006	Dec 2006
	<i>1,000 Pounds</i>	<i>1,000 Pounds</i>	<i>1,000 Pounds</i>	<i>Percent</i>	<i>Percent</i>
CA	66,659	68,902	72,566	8.9	5.3
ID	49,324	51,458	53,055	7.6	3.1
IA	10,657	9,390	9,169	-14.0	-2.4
MN	51,337	50,982	49,955	-2.7	-2.0
OH	3,686	2,494	2,929	-20.5	17.4
OR	8,843	9,966	9,406	6.4	-5.6
WI	74,245	68,100	67,990	-8.4	-0.2
Oth Sts ²	59,794	78,075	77,603	29.8	-0.6
US	324,545	339,367	342,673	5.6	1.0
Atlantic	12,225	12,023	13,511	10.5	12.4
Central	151,964	143,952	142,880	-6.0	-0.7
West	160,356	183,392	186,282	16.2	1.6

¹ Revised.

² States not shown when fewer than 3 plants reported or individual plant operations could be disclosed. Percent change shown only when comparable States are included in the calculation.

Cheddar Cheese: Production by State and United States, January 2006-2007

State	Jan 2006	Dec ¹ 2006	Jan 2007	Change From	
				Jan 2006	Dec 2006
	<i>1,000 Pounds</i>	<i>1,000 Pounds</i>	<i>1,000 Pounds</i>	<i>Percent</i>	<i>Percent</i>
CA	42,831	43,405	43,292	1.1	-0.3
ID	45,661	48,080	50,206	10.0	4.4
MN	47,188	46,849	45,889	-2.8	-2.0
OH	2,692	1,753	2,210	-17.9	26.1
WI	59,554	54,200	54,210	-9.0	
Oth Sts ²	67,883	79,841	78,011	14.9	-2.3
US	265,809	274,128	273,818	3.0	-0.1
Atlantic	11,754	11,493	13,425	14.2	16.8
Central	126,396	119,195	117,864	-6.8	-1.1
West	127,659	143,440	142,529	11.6	-0.6

¹ Revised.

² States not shown when fewer than 3 plants reported or individual plant operations could be disclosed. Percent change shown only when comparable States are included in the calculation.

**Italian Cheese, Total: Production by State and
United States, January 2006-2007**

State	Jan 2006	Dec ¹ 2006	Jan 2007	Change From	
				Jan 2006	Dec 2006
	<i>1,000 Pounds</i>	<i>1,000 Pounds</i>	<i>1,000 Pounds</i>	<i>Percent</i>	<i>Percent</i>
CA	98,357	108,240	109,091	10.9	0.8
ID	10,311	11,495	12,759	23.7	11.0
NY	33,050	33,712	32,162	-2.7	-4.6
PA	22,073	20,527	21,681	-1.8	5.6
SD	7,494	7,455	7,517	0.3	0.8
WI	91,321	103,095	96,619	5.8	-6.3
Oth Sts ²	65,709	69,244	70,273	6.9	1.5
US	328,315	353,768	350,102	6.6	-1.0
Atlantic	64,331	62,920	62,159	-3.4	-1.2
Central	120,224	134,128	128,176	6.6	-4.4
West	143,760	156,720	159,767	11.1	1.9

¹ Revised.

² States not shown when fewer than 3 plants reported or individual plant operations could be disclosed. Percent change shown only when comparable States are included in the calculation.

Mozzarella Cheese: Production by State and United States, January 2006-2007

State	Jan 2006	Dec ¹ 2006	Jan 2007	Change From	
				Jan 2006	Dec 2006
	<i>1,000 Pounds</i>	<i>1,000 Pounds</i>	<i>1,000 Pounds</i>	<i>Percent</i>	<i>Percent</i>
CA	88,000	96,806	96,910	10.1	0.1
ID	8,413	9,793	10,580	25.8	8.0
NY	15,705	15,941	15,122	-3.7	-5.1
PA	19,277	17,578	18,778	-2.6	6.8
WI	67,537	73,300	69,500	2.9	-5.2
Oth Sts ²	60,642	66,138	66,692	10.0	0.8
US	259,574	279,556	277,582	6.9	-0.7
Atlantic	40,419	39,599	39,628	-2.0	0.1
Central	88,368	97,466	93,384	5.7	-4.2
West	130,787	142,491	144,570	10.5	1.5

¹ Revised.

² States not shown when fewer than 3 plants reported or individual plant operations could be disclosed. Percent change shown only when comparable States are included in the calculation.

Butter: Production by State and United States, January 2006-2007

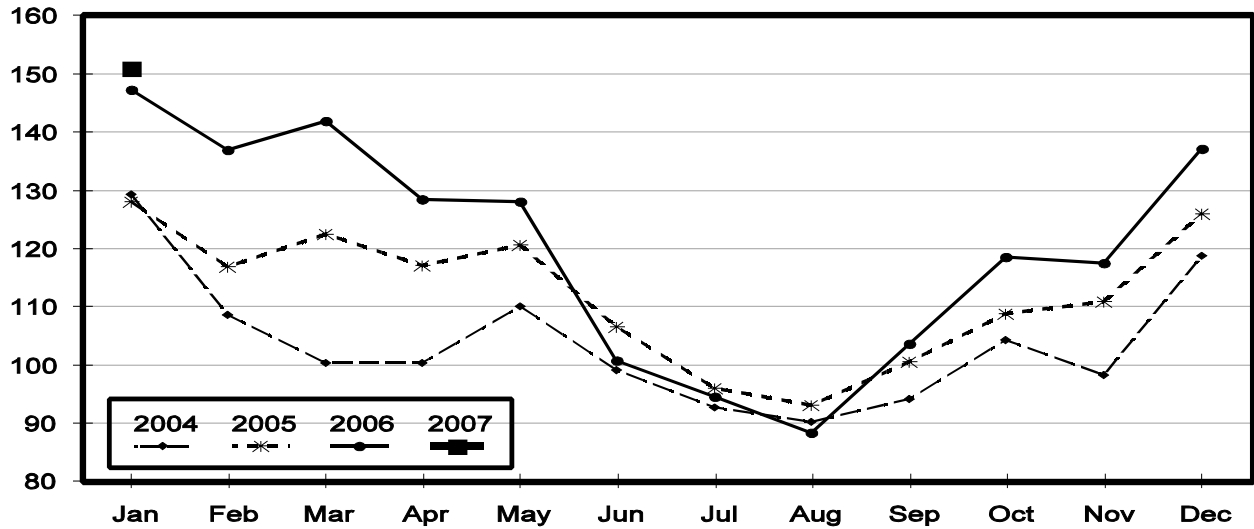
State	Jan 2006	Dec ¹ 2006	Jan 2007	Change From	
				Jan 2006	Dec 2006
	<i>1,000 Pounds</i>	<i>1,000 Pounds</i>	<i>1,000 Pounds</i>	<i>Percent</i>	<i>Percent</i>
CA	42,977	43,866	45,548	6.0	3.8
NY	2,061	1,474	1,532	-25.7	3.9
PA	7,930	7,034	6,891	-13.1	-2.0
WI	44,351	34,798	39,400	-11.2	13.2
Oth Sts ²	49,932	50,067	57,591	15.3	15.0
US	147,251	137,239	150,962	2.5	10.0
Atlantic	15,991	12,454	14,288	-10.6	14.7
Central	68,268	62,001	67,735	-0.8	9.2
West	62,992	62,784	68,939	9.4	9.8

¹ Revised.

² States not shown when fewer than 3 plants reported or individual plant operations could be disclosed. Percent change shown only when comparable States are included in the calculation.

Total Butter Production United States

Million Pounds



**Nonfat Dry Milk, Human: Production by State
and United States, January 2006-2007**

State	Jan 2006	Dec ¹ 2006	Jan 2007	Change From	
				Jan 2006	Dec 2006
	<i>1,000 Pounds</i>	<i>1,000 Pounds</i>	<i>1,000 Pounds</i>	<i>Percent</i>	<i>Percent</i>
CA	48,661	63,442	64,141	31.8	1.1
PA	8,670	7,638	7,073	-18.4	-7.4
Oth Sts ²	49,923	43,663	39,586	-20.7	-9.3
US	107,254	114,743	110,800	3.3	-3.4
Atlantic	18,143	12,992	13,515	-25.5	4.0
Central	12,621	14,234	13,327	5.6	-6.4
West	76,490	87,517	83,958	9.8	-4.1

¹ Revised.

² States not shown when fewer than 3 plants reported or individual plant operations could be disclosed. Percent change shown only when comparable States are included in the calculation.

**Dry Whey, Human: Production by State
and United States, January 2006-2007**

State	Jan 2006	Dec ¹ 2006	Jan 2007	Change From	
				Jan 2006	Dec 2006
	<i>1,000 Pounds</i>	<i>1,000 Pounds</i>	<i>1,000 Pounds</i>	<i>Percent</i>	<i>Percent</i>
CA	9,347	8,784	8,623	-7.7	-1.8
MN	3,873	5,040	4,683	20.9	-7.1
NY	11,212	10,645	11,251	0.3	5.7
WI	26,103	24,277	26,300	0.8	8.3
Oth Sts ²	31,634	38,591	41,534	31.3	7.6
US	82,169	87,337	92,391	12.4	5.8
Atlantic	20,228	19,096	20,562	1.7	7.7
Central	39,380	40,321	42,548	8.0	5.5
West	22,561	27,920	29,281	29.8	4.9

¹ Revised.

² States not shown when fewer than 3 plants reported or individual plant operations could be disclosed. Percent change shown only when comparable States are included in the calculation.

Ice Cream, Hard: Production by State and United States, January 2006-2007

State	Jan 2006	Dec ¹ 2006	Jan 2007	Change From	
				Jan 2006	Dec 2006
	<i>1,000 Gallons</i>	<i>1,000 Gallons</i>	<i>1,000 Gallons</i>	<i>Percent</i>	<i>Percent</i>
CA	7,867	7,551	3,786	-51.9	-49.9
FL	1,750	1,450	1,518	-13.3	4.7
IN	5,527	5,006	5,981	8.2	19.5
MA	5,024	2,764	4,201	-16.4	52.0
MN	2,946	2,590	2,791	-5.3	7.8
MO	1,895	868	2,481	30.9	185.8
NY	2,063	1,656	1,876	-9.1	13.3
OH	1,742	1,526	1,951	12.0	27.9
OR	728	773	935	28.4	21.0
PA	1,933	2,065	2,701	39.7	30.8
TN	1,170	924	1,283	9.7	38.9
TX	4,542	3,321	3,688	-18.8	11.1
UT	1,505	1,571	1,750	16.3	11.4
Oth Sts ²	23,134	18,410	27,062	17.0	47.0
US	61,826	50,475	62,004	0.3	22.8
N Atl	12,656	8,714	12,990	2.6	49.1
S Atl	5,195	5,060	6,735	29.6	33.1
E N Cen	11,687	10,795	13,389	14.6	24.0
W N Cen	10,073	8,289	10,824	7.5	30.6
S Cen	9,013	6,790	8,480	-5.9	24.9
West	13,202	10,827	9,586	-27.4	-11.5

¹ Revised.

² States not shown when fewer than 3 plants reported or individual plant operations could be disclosed. Percent change shown only when comparable States are included in the calculation.

**Canned Milk and Dry Milk Products: Manufacturers' Shipments,
and Stocks, January, 2006-2007**

Product	Jan 2006	Dec 2006 ¹	Jan 2007	Change From	
				Jan 2006	Dec 2006
	Manufacturers' Shipments ²				
	<i>1,000 Pounds</i>	<i>1,000 Pounds</i>	<i>1,000 Pounds</i>	<i>Percent</i>	<i>Percent</i>
Nonfat Dry Milk, Human	98,273	68,141	110,663	12.6	62.4
	Manufacturers' Stocks End-of-Month ³				
	<i>1,000 Pounds</i>	<i>1,000 Pounds</i>	<i>1,000 Pounds</i>	<i>Percent</i>	<i>Percent</i>
Canned Evaporated and Condensed Whole Milk	41,517	35,052	47,708	14.9	36.1
Nonfat Dry Milk, Human	113,966	80,686	81,389	-28.6	0.9
Dry Buttermilk, Total	14,698	5,023	5,149	-65.0	2.5

¹ Revised.

² For dry products, shipments of bulk goods only.

³ Stocks held by manufacturers at all points and in transit.

Procedures and Reliability: Estimates included in this report are based on data provided each month by manufacturers of these products. In 32 States, the State Departments of Agriculture assist in collection of data, which eliminates duplicate reporting and reduces respondent burden. Data are collected by mail, personal and telephone interviews following the close of each month. There were 1,081 manufacturers that made one or more products in 2006. Each month, reports are generally received from all dairy plants in States with small numbers of plants. In States with large numbers of plants, survey procedures are designed to obtain monthly reports from all large plants and from a sample of small plants. Monthly estimates are based upon returns from about 70 percent of the plants which account for 70 to 90 percent of the total production of major dairy products.

Revision Policy: Monthly estimates are subject to revision the month following the preliminary estimates. Annual estimates are published in the "**Dairy Products**" report published each April which includes any revisions made to current and previous year. An attempt is made to get information from all plants for preparing these estimates

Information Contacts

Listed below are the commodity specialists in the Livestock Branch of the National Agricultural Statistics Service to contact for additional information.

- Dan Kerestes, Chief, Livestock Branch (202) 720-3570
- William Weaver, Head, Livestock Section (202) 720-3570
 - Bruce Boess - Hogs and Pigs (202) 720-3106
 - Shawn Clark - Dairy Products (202) 690-3236
 - Jason Hardegree - Milk Production and Milk Cows (202) 720-3278
 - Scott Hollis - Sheep & Lambs, Goats (202) 720-4751
 - Mike Miller - Cattle, Cattle on Feed (202) 720-3040
 - Benita Hodge - Livestock Slaughter (515) 284-4340
 - Charmaine Wilson - Dairy Products Prices (202) 690-2168

ACCESS TO REPORTS!!

For your convenience, there are several ways to obtain NASS reports, data products, and services:

INTERNET ACCESS

All NASS reports are available free of charge on the worldwide Internet. For access, connect to the Internet and go to the NASS Home Page at: **www.nass.usda.gov**.

E-MAIL SUBSCRIPTION

All NASS reports are available by subscription free of charge direct to your e-mail address. Starting with the NASS Home Page at **www.nass.usda.gov**, under the right navigation, *Receive reports by Email*, click on **National** or **State**. Follow the instructions on the screen.

PRINTED REPORTS OR DATA PRODUCTS

CALL OUR TOLL-FREE ORDER DESK: 800-999-6779 (U.S. and Canada)
Other areas, please call 703-605-6220 FAX: 703-605-6900
(Visa, MasterCard, check, or money order acceptable for payment.)

ASSISTANCE

For **assistance** with general agricultural statistics or further information about NASS or its products or services, contact the **Agricultural Statistics Hotline** at **800-727-9540**, 7:30 a.m. to 4:00 p.m. ET, or e-mail: **nass@nass.usda.gov**.

The U.S. Department of Agriculture (USDA) prohibits discrimination in all its programs and activities on the basis of race, color, national origin, age, disability, and where applicable, sex, marital status, familial status, parental status, religion, sexual orientation, genetic information, political beliefs, reprisal, or because all or a part of an individual's income is derived from any public assistance program. (Not all prohibited bases apply to all programs.) Persons with disabilities who require alternative means for communication of program information (Braille, large print, audiotape, etc.) should contact USDA's TARGET Center at (202) 720-2600 (voice and TDD).

To file a complaint of discrimination, write to USDA, Director, Office of Civil Rights, 1400 Independence Avenue, S.W., Washington, D.C. 20250-9410, or call (800) 795-3272 (voice) or (202) 720-6382 (TDD). USDA is an equal opportunity provider and employer.