



# NASS

FACT FINDERS FOR AGRICULTURE  
UNITED STATES DEPARTMENT OF AGRICULTURE

Washington, D.C.

# Dairy Products

---

Released April 4, 2007, by the National Agricultural Statistics Service (NASS), Agricultural Statistics Board, U.S. Department of Agriculture. For information on *Dairy Products* call Shawn Clark at (202) 690-3236, office hours 7:30 a.m. to 4:00 p.m. ET.

## February 2007 Highlights

**Total cheese** output (excluding cottage cheese) was 745 million pounds, 3.3 percent above February 2006 but 9.8 percent below January 2007.

**Italian type cheese** production totaled 320 million pounds, 4.1 percent above February 2006 but 9.4 percent below January 2007.

**American type cheese** production totaled 302 million pounds, 0.7 percent below February 2006 and 11.9 percent below January 2007.

**Butter** production was 134 million pounds, 2.0 percent below February 2006 and 11.1 percent below January 2007.

**Dry Milk Powders:** (comparisons with February 2006)

Nonfat dry milk, human --- 98.1 million pounds, down 16.5 percent.

Skim milk powders --- 11.0 million pounds, down 57.0 percent.

**Whey products:** (comparisons with February 2006)

Dry whey, total --- 90.1 million pounds, up 0.4 percent.

Lactose, human and animal --- 60.0 million pounds, up 15.7 percent.

Whey protein concentrate, total --- 30.8 million pounds, down 6.5 percent.

**Frozen products:** (comparisons with February 2006)

Ice cream, Regular (hard) --- 64.6 million gallons, up 2.7 percent.

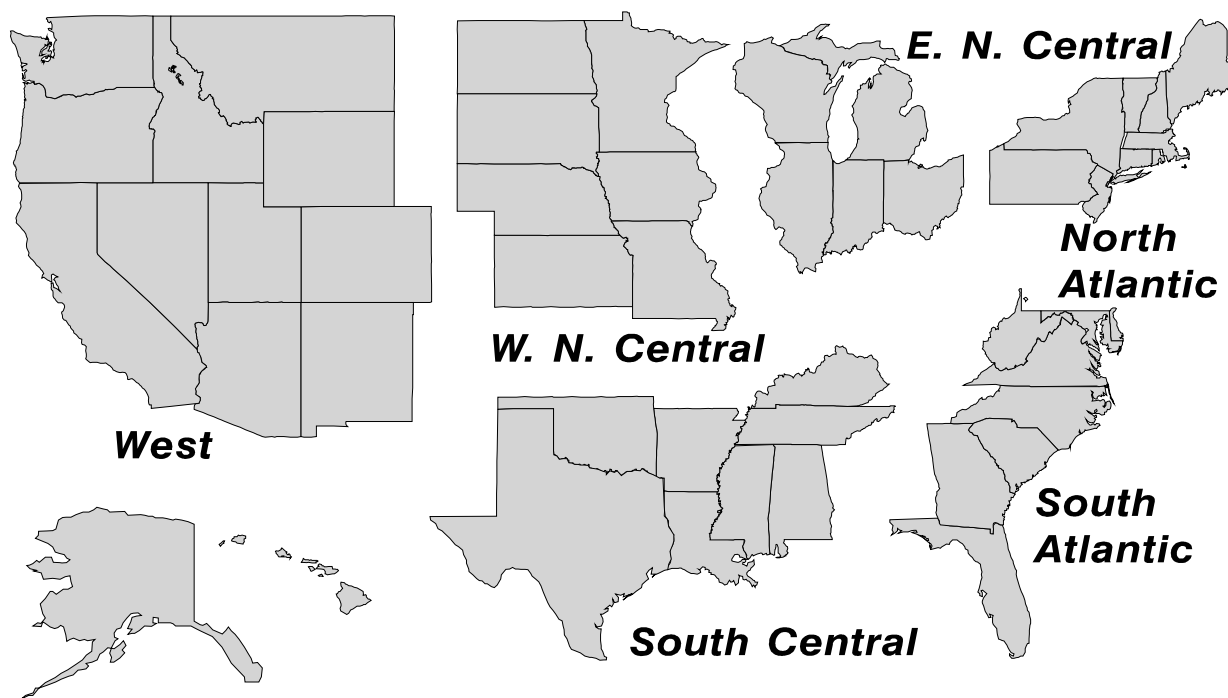
Ice cream, Lowfat (total) --- 29.4 million gallons, up 21.9 percent.

Sherbet (hard) --- 3.87 million gallons, down 7.3 percent.

Frozen Yogurt (total) --- 4.11 million gallons, down 9.1 percent.

## U. S. Geographic Regions Dairy Products

If we are not able to publish a region for confidentiality reasons, it will be combined with other regions when possible. For example, if North Atlantic can not be published, then it will be combined with South Atlantic to publish Atlantic. The West North Central and East North Central will be combined, if necessary, to form North Central. In the event that neither could be published, they may be combined with South Central to publish Central. Some tables will have only limited regions shown, therefore the regions may not add to the United States total.



## Contents

## Page

Dairy Products: Production by Product, United States .....	1
Whey and Modified Whey Products: Production, Stocks, and Prices, United States .....	2
Dairy Products: Production by Product and Month, United States .....	3
Select Commodities by State and United States .....	10
Canned Milk and Dry Milk Products: Manufacturer's Shipments, Stocks, and Selling Prices .....	15
Procedures and Reliability .....	16
Information Contacts .....	16

**Dairy Products: Production by Product,  
United States, February, 2006-2007**

Product	Feb 2006	Jan 2007 <sup>1</sup>	Feb 2007	Change From	
				Feb 2006	Jan 2007
	<i>1,000 Pounds</i>	<i>1,000 Pounds</i>	<i>1,000 Pounds</i>	<i>Percent</i>	<i>Percent</i>
Butter	136,953	151,030	134,242	-2.0	-11.1
Cheese					
American Types <sup>2</sup>	304,376	343,095	302,133	-0.7	-11.9
Cheddar	246,344	274,082	245,588	-0.3	-10.4
Swiss	24,153	26,827	23,180	-4.0	-13.6
Brick and Muenster	7,706	8,819	7,948	3.1	-9.9
Cream and Neufchatel	46,625	55,172	52,146	11.8	-5.5
Hispanic	14,009	15,253	13,884	-0.9	-9.0
Mozzarella	242,804	279,383	256,945	5.8	-8.0
Other Italian Types	64,819	74,206	63,299	-2.3	-14.7
Total Italian Types	307,623	353,589	320,244	4.1	-9.4
All Other Types	16,486	23,214	25,541	54.9	10.0
Total	720,978	825,969	745,076	3.3	-9.8
Cottage Cheese, Curd <sup>3</sup>	34,145	38,293	35,916	5.2	-6.2
Cottage Cheese, Cream <sup>4</sup>	27,193	29,227	27,757	2.1	-5.0
Cottage Cheese, Lowfat <sup>5</sup>	30,818	34,556	31,738	3.0	-8.2
Canned Evaporated and Condensed Whole Milk	36,318	39,843	36,158	-0.4	-9.2
Dry Whole Milk	3,213	2,272	2,494	-22.4	9.8
Nonfat Dry Milk, Human Skim Milk Powders <sup>6</sup>	117,466	108,849	98,098	-16.5	-9.9
Dry Skim Milk, Animal	393	305	294	-25.2	-3.6
Dry Buttermilk	6,176	7,715	7,281	17.9	-5.6
Sour Cream	76,832	90,856	79,938	4.0	-12.0
Yogurt, Plain & Flavored	238,108	286,256	278,332	16.9	-2.8
	<i>1,000 Gallons</i>	<i>1,000 Gallons</i>	<i>1,000 Gallons</i>	<i>Percent</i>	<i>Percent</i>
Frozen Products					
Ice Cream, Regular, Hard	62,916	64,840	64,615	2.7	-0.3
Ice Cream, Lowfat, Hard	7,897	10,933	10,720	35.7	-1.9
Ice Cream, Lowfat, Soft	16,237	15,793	18,690	15.1	18.3
Ice Cream, Lowfat, Total	24,134	26,726	29,410	21.9	10.0
Ice Cream, Nonfat, Hard	1,254	1,205	960	-23.4	-20.3
Sherbet, Hard	4,173	3,311	3,867	-7.3	16.8
Water and Juice Ices	5,593	4,565	3,849	-31.2	-15.7
Frozen Yogurt, Total	4,524	4,589	4,112	-9.1	-10.4
Regular & Lowfat, Hard	1,337	1,514	1,513	13.2	-0.1
Nonfat, Hard	940	670	765	-18.6	14.2
Other Frozen Dairy Products	444	789	687	54.7	-12.9
Mix for Frozen Products					
Ice Cream Mix	34,928	36,443	36,137	3.5	-0.8
Ice Cream, Lowfat, Mix	13,879	15,211	16,834	21.3	10.7
Ice Cream, Nonfat, Mix	851	720	578	-32.1	-19.7
Sherbet Mix	3,170	2,533	2,822	-11.0	11.4
Yogurt Mix	2,742	2,781	2,492	-9.1	-10.4

<sup>1</sup> Revised.

<sup>2</sup> Includes Cheddar, Colby, Monterey, and Jack.

<sup>3</sup> Mostly used for processing into cream or lowfat cottage cheese.

<sup>4</sup> Fat content 4 percent or more.

<sup>5</sup> Fat content less than 4 percent.

<sup>6</sup> Includes protein standardized and blends.

**Whey and Modified Whey Products: Production, Stocks,  
and Prices, United States, February, 2006-2007**

Product	Feb 2006	Jan 2007 <sup>1</sup>	Feb 2007	Change From	
				Feb 2006	Jan 2007
<b>Production</b>					
	<i>1,000 Pounds</i>	<i>1,000 Pounds</i>	<i>1,000 Pounds</i>	<i>Percent</i>	<i>Percent</i>
Condensed Whey, Solids Content <sup>2</sup>					
Sweet-Type, Human	7,779	10,415	9,117	17.2	-12.5
Dry Whey Products					
Dry Whey, Human	84,446	92,508	85,612	1.4	-7.5
Dry Whey, Animal	5,267	3,637	4,502	-14.5	23.8
Dry Whey, Total	89,713	96,145	90,114	0.4	-6.3
Reduced Lactose and Minerals					
Human Food	3,440	4,317	2,853	-17.1	-33.9
Animal Feed	3,642	4,281	4,132	13.5	-3.5
Lactose, Human and Animal	51,855	65,064	60,003	15.7	-7.8
Whey					
Protein Concentrate					
Human <sup>3</sup>	28,567	29,585	26,587	-6.9	-10.1
Animal <sup>3</sup>	4,417	3,470	4,237	-4.1	22.1
Total <sup>3</sup>	32,984	33,055	30,824	-6.5	-6.7
25.0-49.9 Percent <sup>4</sup>	24,352	22,256	18,680	-23.3	-16.1
50.0-89.9 Percent <sup>4</sup>	8,632	10,799	12,144	40.7	12.5
Protein Isolates <sup>5</sup>	2,323	3,471	2,726	17.3	-21.5
<b>Manufacturers' Stocks End-of-Month <sup>6</sup></b>					
	<i>1,000 Pounds</i>	<i>1,000 Pounds</i>	<i>1,000 Pounds</i>	<i>Percent</i>	<i>Percent</i>
Dry Whey Products					
Dry Whey, Human	36,407	33,128	33,428	-8.2	0.9
Dry Whey, Animal	3,673	1,797	1,697	-53.8	-5.6
Dry Whey, Total	40,080	34,925	35,125	-12.4	0.6
Reduced Lactose and Minerals					
Human and Animal <sup>7</sup>	5,013	6,529	4,891	-2.4	-25.1
Lactose, Human and Animal	42,429	42,550	40,624	-4.3	-4.5
Whey					
Protein Concentrate					
Human <sup>3</sup>	27,377	25,415	22,921	-16.3	-9.8
Animal <sup>3</sup>	2,179	1,829	1,866	-14.4	2.0
Total <sup>3</sup>	29,556	27,244	24,787	-16.1	-9.0
25.0-49.9 Percent <sup>4</sup>	18,025	17,056	14,655	-18.7	-14.1
50.0-89.9 Percent <sup>4</sup>	11,531	10,188	10,132	-12.1	-0.5
<b>Manufacturers' Selling Price <sup>8</sup></b>					
	<i>Cents per Pound</i>	<i>Cents per Pound</i>	<i>Cents per Pound</i>	<i>Cents Change</i>	<i>Cents Change</i>
Dry Whey, Animal	31.4	40.5	58.2	26.8	17.7

<sup>1</sup> Revised.

<sup>2</sup> Final marketable product only. Does not include quantity used or shipped to another plant for further processing into dry whey or modified whey products. Does not include sweet-type, animal whey.

<sup>3</sup> Whey Protein Concentrate, 25.0 to 89.9 percent.

<sup>4</sup> Whey Protein Concentrate, Human and Animal.

<sup>5</sup> Whey Protein Isolate, 90.0 percent or greater.

<sup>6</sup> Stocks held by manufacturers at all points and in transit.

<sup>7</sup> Reduced lactose and minerals stocks combined to avoid disclosure of individual operations.

<sup>8</sup> Prices for bulk goods, f.o.b. plant. Average monthly prices reported by firms.

**Dairy Products: Production by Product and Month,  
United States, 2006-2007 <sup>1</sup>**

Product and Month	By Month			Cumulative		
	2006	2007	Change From 2006	2006	2007	Change From 2006
	<i>1,000 Pounds</i>	<i>1,000 Pounds</i>	<i>Percent</i>	<i>1,000 Pounds</i>	<i>1,000 Pounds</i>	<i>Percent</i>
<b>Total Cheese</b>						
Jan	772,337	825,969	6.9	772,337	825,969	6.9
Feb	720,978	745,076	3.3	1,493,315	1,571,045	5.2
Mar	812,634			2,305,949		
Apr	786,477			3,092,426		
May	811,591			3,904,017		
Jun	793,937			4,697,954		
Jul	767,436			5,465,390		
Aug	788,908			6,254,298		
Sep	784,276			7,038,574		
Oct	800,338			7,838,912		
Nov	791,127			8,630,039		
Dec	830,146			9,460,185		
<b>American Cheese</b>						
Jan	324,545	343,095	5.7	324,545	343,095	5.7
Feb	304,376	302,133	-0.7	628,921	645,228	2.6
Mar	338,383			967,304		
Apr	338,715			1,306,019		
May	346,512			1,652,531		
Jun	337,024			1,989,555		
Jul	328,226			2,317,781		
Aug	318,930			2,636,711		
Sep	325,166			2,961,877		
Oct	321,234			3,283,111		
Nov	314,945			3,598,056		
Dec	339,367			3,937,423		
<b>Cheddar Cheese</b>						
Jan	265,809	274,082	3.1	265,809	274,082	3.1
Feb	246,344	245,588	-0.3	512,153	519,670	1.5
Mar	270,553			782,706		
Apr	273,664			1,056,370		
May	275,298			1,331,668		
Jun	268,350			1,600,018		
Jul	267,088			1,867,106		
Aug	252,126			2,119,232		
Sep	258,688			2,377,920		
Oct	250,616			2,628,536		
Nov	250,509			2,879,045		
Dec	274,128			3,153,173		

See footnote(s) at end of table.

--continued

**Dairy Products: Production by Product and Month,  
United States, 2006-2007 <sup>1</sup> (continued)**

Product and Month	By Month			Cumulative		
	2006	2007	Change From 2006	2006	2007	Change From 2006
	<i>1,000 Pounds</i>	<i>1,000 Pounds</i>	<i>Percent</i>	<i>1,000 Pounds</i>	<i>1,000 Pounds</i>	<i>Percent</i>
Italian Cheese						
Jan	328,315	353,589	7.7	328,315	353,589	7.7
Feb	307,623	320,244	4.1	635,938	673,833	6.0
Mar	346,179			982,117		
Apr	328,588			1,310,705		
May	335,577			1,646,282		
Jun	326,014			1,972,296		
Jul	318,197			2,290,493		
Aug	333,002			2,623,495		
Sep	323,576			2,947,071		
Oct	334,254			3,281,325		
Nov	326,124			3,607,449		
Dec	353,768			3,961,217		
Mozzarella						
Jan	259,574	279,383	7.6	259,574	279,383	7.6
Feb	242,804	256,945	5.8	502,378	536,328	6.8
Mar	273,870			776,248		
Apr	261,653			1,037,901		
May	267,474			1,305,375		
Jun	261,675			1,567,050		
Jul	254,757			1,821,807		
Aug	263,715			2,085,522		
Sep	257,598			2,343,120		
Oct	263,140			2,606,260		
Nov	257,433			2,863,693		
Dec	279,556			3,143,249		
Other Italian						
Jan	68,741	74,206	8.0	68,741	74,206	8.0
Feb	64,819	63,299	-2.3	133,560	137,505	3.0
Mar	72,309			205,869		
Apr	66,935			272,804		
May	68,103			340,907		
Jun	64,339			405,246		
Jul	63,440			468,686		
Aug	69,287			537,973		
Sep	65,978			603,951		
Oct	71,114			675,065		
Nov	68,691			743,756		
Dec	74,212			817,968		

See footnote(s) at end of table.

--continued

**Dairy Products: Production by Product and Month,  
United States, 2006-2007 <sup>1</sup> (continued)**

Product and Month	By Month			Cumulative		
	2006	2007	Change From 2006	2006	2007	Change From 2006
	<i>1,000 Pounds</i>	<i>1,000 Pounds</i>	<i>Percent</i>	<i>1,000 Pounds</i>	<i>1,000 Pounds</i>	<i>Percent</i>
Butter						
Jan	147,251	151,030	2.6	147,251	151,030	2.6
Feb	136,953	134,242	-2.0	284,204	285,272	0.4
Mar	141,993			426,197		
Apr	128,457			554,654		
May	128,126			682,780		
Jun	100,779			783,559		
Jul	94,567			878,126		
Aug	88,325			966,451		
Sep	103,771			1,070,222		
Oct	118,598			1,188,820		
Nov	117,560			1,306,380		
Dec	137,239			1,443,619		
Nonfat Dry Milk, Human						
Jan	107,254	108,849	1.5	107,254	108,849	1.5
Feb	117,466	98,098	-16.5	224,720	206,947	-7.9
Mar	128,269			352,989		
Apr	129,225			482,214		
May	132,262			614,476		
Jun	117,049			731,525		
Jul	88,227			819,752		
Aug	75,860			895,612		
Sep	64,888			960,500		
Oct	72,283			1,032,783		
Nov	80,018			1,112,801		
Dec	114,743			1,227,544		
Skim Milk Powders <sup>2</sup>						
Jan	29,334	10,812	-63.1	29,334	10,812	-63.1
Feb	25,628	11,032	-57.0	54,962	21,844	-60.3
Mar	19,989			74,951		
Apr	12,411			87,362		
May	18,144			105,506		
Jun	22,356			127,862		
Jul	29,344			157,206		
Aug	24,088			181,294		
Sep	21,343			202,637		
Oct	27,395			230,032		
Nov	24,981			255,013		
Dec	15,356			270,369		

See footnote(s) at end of table.

--continued



**Dairy Products: Production by Product and Month,  
United States, 2006-2007 <sup>1</sup> (continued)**

Product and Month	By Month			Cumulative		
	2006	2007	Change From 2006	2006	2007	Change From 2006
	<i>1,000 Pounds</i>	<i>1,000 Pounds</i>	<i>Percent</i>	<i>1,000 Pounds</i>	<i>1,000 Pounds</i>	<i>Percent</i>
Dry Whey, Total <sup>3</sup>						
Jan	88,243	96,145	9.0	88,243	96,145	9.0
Feb	89,713	90,114	0.4	177,956	186,259	4.7
Mar	101,239			279,195		
Apr	96,339			375,534		
May	97,119			472,653		
Jun	90,168			562,821		
Jul	90,348			653,169		
Aug	92,057			745,226		
Sep	86,197			831,423		
Oct	86,845			918,268		
Nov	84,079			1,002,347		
Dec	91,128			1,093,475		
Lactose, Human and Animal						
Jan	59,377	65,064	9.6	59,377	65,064	9.6
Feb	51,855	60,003	15.7	111,232	125,067	12.4
Mar	58,145			169,377		
Apr	58,106			227,483		
May	60,475			287,958		
Jun	56,335			344,293		
Jul	55,139			399,432		
Aug	59,593			459,025		
Sep	56,308			515,333		
Oct	62,278			577,611		
Nov	60,567			638,178		
Dec	60,375			698,553		
Whey Protein Concentrate, Total						
Jan	35,280	33,055	-6.3	35,280	33,055	-6.3
Feb	32,984	30,824	-6.5	68,264	63,879	-6.4
Mar	35,592			103,856		
Apr	35,577			139,433		
May	35,694			175,127		
Jun	34,411			209,538		
Jul	33,899			243,437		
Aug	33,735			277,172		
Sep	33,611			310,783		
Oct	34,221			345,004		
Nov	32,872			377,876		
Dec	34,873			412,749		

See footnote(s) at end of table.

--continued

**Dairy Products: Production by Product and Month,  
United States, 2006-2007 <sup>1</sup> (continued)**

Product and Month	By Month			Cumulative		
	2006	2007	Change From 2006	2006	2007	Change From 2006
	<i>1,000 Pounds</i>	<i>1,000 Pounds</i>	<i>Percent</i>	<i>1,000 Pounds</i>	<i>1,000 Pounds</i>	<i>Percent</i>
<b>Cream Cottage Cheese</b>						
Jan	27,785	29,227	5.2	27,785	29,227	5.2
Feb	27,193	27,757	2.1	54,978	56,984	3.6
Mar	32,115			87,093		
Apr	28,580			115,673		
May	31,383			147,056		
Jun	31,096			178,152		
Jul	29,114			207,266		
Aug	34,975			242,241		
Sep	30,703			272,944		
Oct	30,137			303,081		
Nov	28,960			332,041		
Dec	26,399			358,440		
<b>Lowfat Cottage Cheese</b>						
Jan	31,617	34,556	9.3	31,617	34,556	9.3
Feb	30,818	31,738	3.0	62,435	66,294	6.2
Mar	35,940			98,375		
Apr	31,668			130,043		
May	35,108			165,151		
Jun	33,458			198,609		
Jul	32,960			231,569		
Aug	37,512			269,081		
Sep	33,452			302,533		
Oct	32,376			334,909		
Nov	31,067			365,976		
Dec	29,174			395,150		
<b>Sour Cream</b>						
Jan	81,288	90,856	11.8	81,288	90,856	11.8
Feb	76,832	79,938	4.0	158,120	170,794	8.0
Mar	89,000			247,120		
Apr	79,298			326,418		
May	91,426			417,844		
Jun	89,599			507,443		
Jul	84,064			591,507		
Aug	97,363			688,870		
Sep	85,154			774,024		
Oct	98,611			872,635		
Nov	110,107			982,742		
Dec	100,032			1,082,774		

See footnote(s) at end of table.

--continued

**Dairy Products: Production by Product and Month,  
United States, 2006-2007 <sup>1</sup> (continued)**

Product and Month	By Month			Cumulative		
	2006	2007	Change From 2006	2006	2007	Change From 2006
	<i>1,000 Gallons</i>	<i>1,000 Gallons</i>	<i>Percent</i>	<i>1,000 Gallons</i>	<i>1,000 Gallons</i>	<i>Percent</i>
<b>Ice Cream, Regular, Hard</b>						
Jan	61,826	64,840	4.9	61,826	64,840	4.9
Feb	62,916	64,615	2.7	124,742	129,455	3.8
Mar	77,869			202,611		
Apr	77,408			280,019		
May	82,128			362,147		
Jun	87,898			450,045		
Jul	85,374			535,419		
Aug	84,777			620,196		
Sep	72,705			692,901		
Oct	64,360			757,261		
Nov	56,749			814,010		
Dec	50,475			864,485		
<b>Ice Cream, Lowfat, Total</b>						
Jan	25,444	26,726	5.0	25,444	26,726	5.0
Feb	24,134	29,410	21.9	49,578	56,136	13.2
Mar	31,475			81,053		
Apr	32,054			113,107		
May	37,226			150,333		
Jun	41,999			192,332		
Jul	36,919			229,251		
Aug	37,658			266,909		
Sep	30,862			297,771		
Oct	29,908			327,679		
Nov	22,837			350,516		
Dec	23,267			373,783		
<b>Sherbet, Hard</b>						
Jan	3,893	3,311	-14.9	3,893	3,311	-14.9
Feb	4,173	3,867	-7.3	8,066	7,178	-11.0
Mar	4,582			12,648		
Apr	4,557			17,205		
May	4,791			21,996		
Jun	5,210			27,206		
Jul	4,898			32,104		
Aug	4,777			36,881		
Sep	3,824			40,705		
Oct	3,690			44,395		
Nov	3,151			47,546		
Dec	2,846			50,392		

See footnote(s) at end of table.

--continued

**Dairy Products: Production by Product and Month,  
United States, 2006-2007 <sup>1</sup> (continued)**

Product and Month	By Month			Cumulative		
	2006	2007	Change From 2006	2006	2007	Change From 2006
	<i>1,000 Pounds</i>	<i>1,000 Pounds</i>	<i>Percent</i>	<i>1,000 Pounds</i>	<i>1,000 Pounds</i>	<i>Percent</i>
Yogurt, Plain & Flavored						
Jan	252,353	286,256	13.4	252,353	286,256	13.4
Feb	238,108	278,332	16.9	490,461	564,588	15.1
Mar	280,577			771,038		
Apr	254,096			1,025,134		
May	267,283			1,292,417		
Jun	272,551			1,564,968		
Jul	255,765			1,820,733		
Aug	283,584			2,104,317		
Sep	267,407			2,371,724		
Oct	262,864			2,634,588		
Nov	230,109			2,864,697		
Dec	247,096			3,111,793		
	<i>1,000 Gallons</i>	<i>1,000 Gallons</i>	<i>Percent</i>	<i>1,000 Gallons</i>	<i>1,000 Gallons</i>	<i>Percent</i>
Yogurt, Frozen						
Jan	4,131	4,589	11.1	4,131	4,589	11.1
Feb	4,524	4,112	-9.1	8,655	8,701	0.5
Mar	6,044			14,699		
Apr	5,960			20,659		
May	6,663			27,322		
Jun	6,882			34,204		
Jul	6,240			40,444		
Aug	6,852			47,296		
Sep	5,145			52,441		
Oct	4,948			57,389		
Nov	4,250			61,639		
Dec	3,797			65,436		

<sup>1</sup> January 2007 data revised.

<sup>2</sup> Includes protein standardized and blends.

<sup>3</sup> Excludes all modified dry whey products.

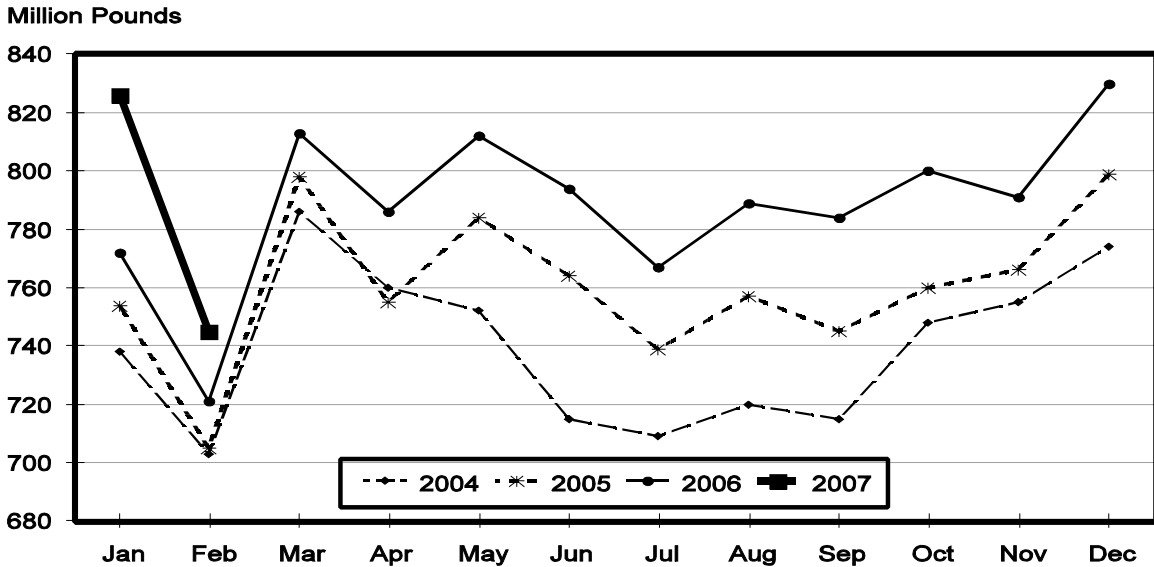
**Total Cheese, Excluding Cottage Cheese: Production by State and United States, February 2006-2007**

State	Feb 2006	Jan <sup>1</sup> 2007	Feb 2007	Change From	
				Feb 2006	Jan 2007
	<i>1,000 Pounds</i>	<i>1,000 Pounds</i>	<i>1,000 Pounds</i>	<i>Percent</i>	<i>Percent</i>
CA	164,830	198,985	181,281	10.0	-8.9
ID	63,376	69,856	59,529	-6.1	-14.8
IL	7,262	6,308	5,930	-18.3	-6.0
IA	12,766	11,661	11,333	-11.2	-2.8
MN	51,324	54,093	45,741	-10.9	-15.4
NM		57,918	52,804		-8.8
NY	54,159	58,467	54,096	-0.1	-7.5
OH	16,001	17,178	15,179	-5.1	-11.6
PA	29,414	31,665	29,218	-0.7	-7.7
SD	14,519	15,517	14,386	-0.9	-7.3
UT	5,713	8,284	7,553	32.2	-8.8
WI	186,724	204,935	184,672	-1.1	-9.9
Oth Sts <sup>2</sup>	114,890	91,102	83,354		-8.5
US	720,978	825,969	745,076	3.3	-9.8
Atlantic	99,558	109,082	99,904	0.3	-8.4
Central	312,672	339,534	307,705	-1.6	-9.4
West	308,748	377,353	337,467	9.3	-10.6

<sup>1</sup> Revised.

<sup>2</sup> States not shown when fewer than 3 plants reported or individual plant operations could be disclosed. Percent change shown only when comparable States are included in the calculation.

**Total Cheese Production United States**



**American Cheese: Production by State and United States, February 2006-2007**

State	Feb 2006	Jan <sup>1</sup> 2007	Feb 2007	Change From	
				Feb 2006	Jan 2007
	<i>1,000 Pounds</i>	<i>1,000 Pounds</i>	<i>1,000 Pounds</i>	<i>Percent</i>	<i>Percent</i>
CA	63,778	72,563	66,043	3.6	-9.0
ID	45,459	53,055	47,780	5.1	-9.9
IA	9,964	9,176	8,989	-9.8	-2.0
MN	47,169	49,955	42,077	-10.8	-15.8
OH	3,279	2,929	2,364	-27.9	-19.3
OR	8,628	9,406	8,526	-1.2	-9.4
WI	66,668	68,162	59,500	-10.8	-12.7
Oth Sts <sup>2</sup>	59,431	77,849	66,854	12.5	-14.1
US	304,376	343,095	302,133	-0.7	-11.9
Atlantic	11,201	13,742	11,989	7.0	-12.8
Central	138,277	143,074	124,762	-9.8	-12.8
West	154,898	186,279	165,382	6.8	-11.2

<sup>1</sup> Revised.

<sup>2</sup> States not shown when fewer than 3 plants reported or individual plant operations could be disclosed. Percent change shown only when comparable States are included in the calculation.

**Cheddar Cheese: Production by State and United States, February 2006-2007**

State	Feb 2006	Jan <sup>1</sup> 2007	Feb 2007	Change From	
				Feb 2006	Jan 2007
	<i>1,000 Pounds</i>	<i>1,000 Pounds</i>	<i>1,000 Pounds</i>	<i>Percent</i>	<i>Percent</i>
CA	38,766	43,292	41,362	6.7	-4.5
ID	43,115	50,206	44,817	3.9	-10.7
MN	42,247	45,889	38,028	-10.0	-17.1
OH	2,423	2,210	1,764	-27.2	-20.2
WI	53,104	54,210	49,700	-6.4	-8.3
Oth Sts <sup>2</sup>	66,689	78,275	69,917	4.8	-10.7
US	246,344	274,082	245,588	-0.3	-10.4
Atlantic	10,948	13,668	11,636	6.3	-14.9
Central	112,536	117,885	105,532	-6.2	-10.5
West	122,860	142,529	128,420	4.5	-9.9

<sup>1</sup> Revised.

<sup>2</sup> States not shown when fewer than 3 plants reported or individual plant operations could be disclosed. Percent change shown only when comparable States are included in the calculation.

**Italian Cheese, Total: Production by State and  
United States, February 2006-2007**

State	Feb 2006	Jan <sup>1</sup> 2007	Feb 2007	Change From	
				Feb 2006	Jan 2007
	<i>1,000 Pounds</i>	<i>1,000 Pounds</i>	<i>1,000 Pounds</i>	<i>Percent</i>	<i>Percent</i>
CA	87,886	109,091	96,748	10.1	-11.3
ID	13,299	12,759	10,562	-20.6	-17.2
NY	29,601	32,282	28,896	-2.4	-10.5
PA	20,867	21,685	19,938	-4.5	-8.1
SD	7,748	7,517	7,284	-6.0	-3.1
WI	87,324	99,510	91,827	5.2	-7.7
Oth Sts <sup>2</sup>	60,898	70,745	64,989	6.7	-8.1
US	307,623	353,589	320,244	4.1	-9.4
Atlantic	58,573	62,283	56,323	-3.8	-9.6
Central	115,558	131,539	121,804	5.4	-7.4
West	133,492	159,767	142,117	6.5	-11.0

<sup>1</sup> Revised.

<sup>2</sup> States not shown when fewer than 3 plants reported or individual plant operations could be disclosed. Percent change shown only when comparable States are included in the calculation.

**Mozzarella Cheese: Production by State and United States, February 2006-2007**

State	Feb 2006	Jan <sup>1</sup> 2007	Feb 2007	Change From	
				Feb 2006	Jan 2007
	<i>1,000 Pounds</i>	<i>1,000 Pounds</i>	<i>1,000 Pounds</i>	<i>Percent</i>	<i>Percent</i>
CA	77,108	96,910	87,585	13.6	-9.6
ID	11,809	10,580	9,007	-23.7	-14.9
NY	14,440	15,140	14,537	0.7	-4.0
PA	18,388	18,784	17,260	-6.1	-8.1
WI	64,108	71,382	66,800	4.2	-6.4
Oth Sts <sup>2</sup>	56,951	66,587	61,756	8.4	-7.3
US	242,804	279,383	256,945	5.8	-8.0
Atlantic	38,103	39,652	37,172	-2.4	-6.3
Central	84,223	95,161	89,370	6.1	-6.1
West	120,478	144,570	130,403	8.2	-9.8

<sup>1</sup> Revised.

<sup>2</sup> States not shown when fewer than 3 plants reported or individual plant operations could be disclosed. Percent change shown only when comparable States are included in the calculation.

**Butter: Production by State and United States, February 2006-2007**

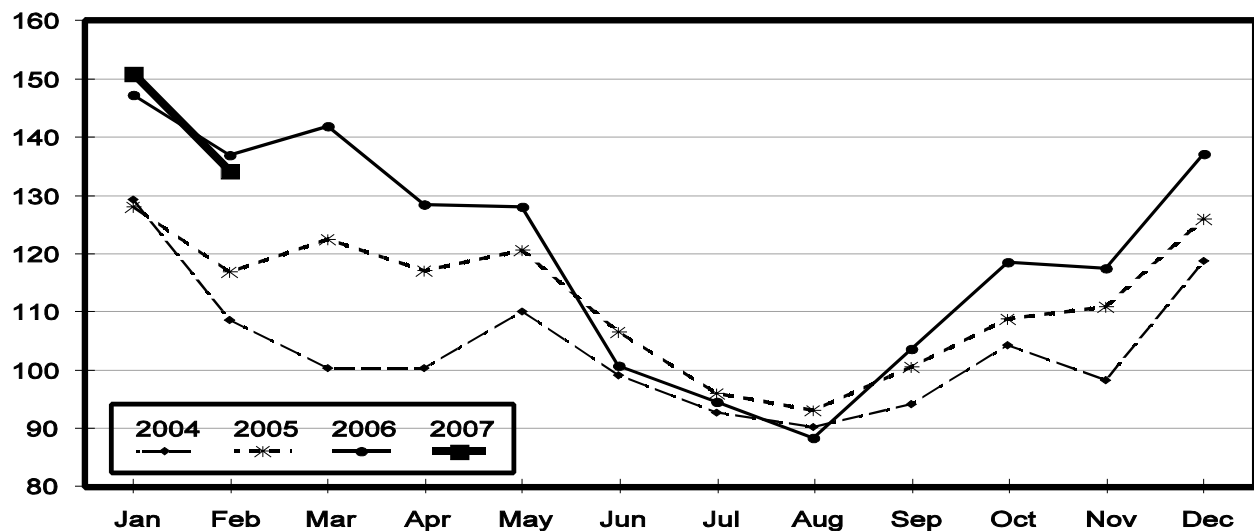
State	Feb 2006	Jan <sup>1</sup> 2007	Feb 2007	Change From	
				Feb 2006	Jan 2007
	<i>1,000 Pounds</i>	<i>1,000 Pounds</i>	<i>1,000 Pounds</i>	<i>Percent</i>	<i>Percent</i>
CA	41,479	45,521	40,115	-3.3	-11.9
NY	1,639	1,755	1,592	-2.9	-9.3
PA	5,974	6,891	6,177	3.4	-10.4
WI	37,925	39,159	32,500	-14.3	-17.0
Oth Sts <sup>2</sup>	49,936	57,704	53,858	7.9	-6.7
US	136,953	151,030	134,242	-2.0	-11.1
Atlantic	13,134	14,510	13,466	2.5	-7.2
Central	64,297	67,373	59,076	-8.1	-12.3
West	59,522	69,147	61,700	3.7	-10.8

<sup>1</sup> Revised.

<sup>2</sup> States not shown when fewer than 3 plants reported or individual plant operations could be disclosed. Percent change shown only when comparable States are included in the calculation.

## Total Butter Production United States

Million Pounds





**Nonfat Dry Milk, Human: Production by State  
and United States, February 2006-2007**

State	Feb 2006	Jan <sup>1</sup> 2007	Feb 2007	Change From	
				Feb 2006	Jan 2007
	<i>1,000 Pounds</i>	<i>1,000 Pounds</i>	<i>1,000 Pounds</i>	<i>Percent</i>	<i>Percent</i>
CA	57,710	64,141	59,082	2.4	-7.9
PA	8,170	7,073	5,794	-29.1	-18.1
Oth Sts <sup>2</sup>	51,586	37,635	33,222	-35.6	-11.7
US	117,466	108,849	98,098	-16.5	-9.9
Atlantic	16,919	13,366	10,513	-37.9	-21.3
Central	15,879	11,829	11,821	-25.6	-0.1
West	84,668	83,654	75,764	-10.5	-9.4

<sup>1</sup> Revised.

<sup>2</sup> States not shown when fewer than 3 plants reported or individual plant operations could be disclosed. Percent change shown only when comparable States are included in the calculation.

**Dry Whey, Human: Production by State  
and United States, February 2006-2007**

State	Feb 2006	Jan <sup>1</sup> 2007	Feb 2007	Change From	
				Feb 2006	Jan 2007
	<i>1,000 Pounds</i>	<i>1,000 Pounds</i>	<i>1,000 Pounds</i>	<i>Percent</i>	<i>Percent</i>
CA	8,389	7,223	7,364	-12.2	2.0
MN	3,507	4,745	4,595	31.0	-3.2
NY	10,042	11,459	9,496	-5.4	-17.1
WI	25,176	26,284	24,500	-2.7	-6.8
Oth Sts <sup>2</sup>	37,332	42,797	39,657	6.2	-7.3
US	84,446	92,508	85,612	1.4	-7.5
Atlantic	18,861	20,770	18,023	-4.4	-13.2
Central	37,618	42,594	39,641	5.4	-6.9
West	27,967	29,144	27,948	-0.1	-4.1

<sup>1</sup> Revised.

<sup>2</sup> States not shown when fewer than 3 plants reported or individual plant operations could be disclosed. Percent change shown only when comparable States are included in the calculation.

**Ice Cream, Hard: Production by State and United States, February 2006-2007**

State	Feb 2006	Jan <sup>1</sup> 2007	Feb 2007	Change From	
				Feb 2006	Jan 2007
	<i>1,000 Gallons</i>	<i>1,000 Gallons</i>	<i>1,000 Gallons</i>	<i>Percent</i>	<i>Percent</i>
CA	8,653	6,534	8,852	2.3	35.5
FL	1,700	1,518	1,400	-17.6	-7.8
IN	5,372	5,981	5,302	-1.3	-11.4
MA	4,039	4,201	3,193	-20.9	-24.0
MN	2,701	2,791	2,895	7.2	3.7
MO	2,255	2,481	2,119	-6.0	-14.6
NY	2,045	1,876	2,051	0.3	9.3
OH	1,677	1,951	1,963	17.1	0.6
OR	932	935	965	3.5	3.2
PA	2,314	2,701	2,005	-13.4	-25.8
TN	1,111	1,283	1,330	19.7	3.7
TX	4,367	4,106	4,461	2.2	8.6
UT	1,828	1,750	1,781	-2.6	1.8
Oth Sts <sup>2</sup>	23,922	26,732	26,298	9.9	-1.6
US	62,916	64,840	64,615	2.7	-0.3
N Atl	11,337	12,990	10,853	-4.3	-16.5
S Atl	5,615	6,735	7,055	25.6	4.8
E N Cen	11,438	13,393	12,284	7.4	-8.3
W N Cen	11,393	10,824	11,184	-1.8	3.3
S Cen	8,739	8,913	8,822	0.9	-1.0
West	14,394	11,985	14,417	0.2	20.3

<sup>1</sup> Revised.

<sup>2</sup> States not shown when fewer than 3 plants reported or individual plant operations could be disclosed. Percent change shown only when comparable States are included in the calculation.

**Canned Milk and Dry Milk Products: Manufacturers' Shipments,  
and Stocks, February, 2006-2007**

Product	Feb 2006	Jan 2007 <sup>1</sup>	Feb 2007	Change From	
				Feb 2006	Jan 2007
	<b>Manufacturers' Shipments <sup>2</sup></b>				
	<i>1,000 Pounds</i>	<i>1,000 Pounds</i>	<i>1,000 Pounds</i>	<i>Percent</i>	<i>Percent</i>
Nonfat Dry Milk, Human	105,453	110,265	98,047	-7.0	-11.1
	<b>Manufacturers' Stocks End-of-Month <sup>3</sup></b>				
	<i>1,000 Pounds</i>	<i>1,000 Pounds</i>	<i>1,000 Pounds</i>	<i>Percent</i>	<i>Percent</i>
Canned Evaporated and Condensed Whole Milk	61,910	47,708	49,807	-19.5	4.4
Nonfat Dry Milk, Human	119,427	80,810	74,719	-37.4	-7.5
Dry Buttermilk, Total	17,057	5,376	5,588	-67.2	3.9

<sup>1</sup> Revised.

<sup>2</sup> For dry products, shipments of bulk goods only.

<sup>3</sup> Stocks held by manufacturers at all points and in transit.

**Procedures and Reliability:** Estimates included in this report are based on data provided each month by manufacturers of these products. In 32 States, the State Departments of Agriculture assist in collection of data, which eliminates duplicate reporting and reduces respondent burden. Data are collected by mail, personal and telephone interviews following the close of each month. There were 1,081 manufacturers that made one or more products in 2006. Each month, reports are generally received from all dairy plants in States with small numbers of plants. In States with large numbers of plants, survey procedures are designed to obtain monthly reports from all large plants and from a sample of small plants. Monthly estimates are based upon returns from about 70 percent of the plants which account for 70 to 90 percent of the total production of major dairy products.

**Revision Policy:** Monthly estimates are subject to revision the month following the preliminary estimates. Annual estimates are published in the "**Dairy Products**" report published each April which includes any revisions made to current and previous year. An attempt is made to get information from all plants for preparing these estimates

### Information Contacts

Listed below are the commodity specialists in the Livestock Branch of the National Agricultural Statistics Service to contact for additional information.

Dan Kerestes, Chief, Livestock Branch . . . . .	(202) 720-3570
William Weaver, Head, Livestock Section . . . . .	(202) 720-3570
Bruce Boess - Hogs and Pigs . . . . .	(202) 720-3106
Shawn Clark - Dairy Products . . . . .	(202) 690-3236
Jason Hardegree - Milk Production and Milk Cows . . . . .	(202) 720-3278
Benita Hodge - Livestock Slaughter . . . . .	(515) 284-4340
Scott Hollis - Sheep & Lambs, Goats . . . . .	(202) 720-4751
Mike Miller - Cattle, Cattle on Feed . . . . .	(202) 720-3040
Charmaine Wilson - Dairy Products Prices . . . . .	(202) 690-2168

## ACCESS TO REPORTS!!

---

For your convenience, there are several ways to obtain NASS reports, data products, and services:

### INTERNET ACCESS

All NASS reports are available free of charge on the worldwide Internet. For access, connect to the Internet and go to the NASS Home Page at: [www.nass.usda.gov](http://www.nass.usda.gov).

### E-MAIL SUBSCRIPTION

All NASS reports are available by subscription free of charge direct to your e-mail address. Starting with the NASS Home Page at [www.nass.usda.gov](http://www.nass.usda.gov), under the right navigation, *Receive reports by Email*, click on **National** or **State**. Follow the instructions on the screen.

-----

### PRINTED REPORTS OR DATA PRODUCTS

**CALL OUR TOLL-FREE ORDER DESK: 800-999-6779 (U.S. and Canada)**  
**Other areas, please call 703-605-6220      FAX: 703-605-6900**  
**(Visa, MasterCard, check, or money order acceptable for payment.)**

-----

### ASSISTANCE

For **assistance** with general agricultural statistics or further information about NASS or its products or services, contact the **Agricultural Statistics Hotline** at **800-727-9540**, 7:30 a.m. to 4:00 p.m. ET, or e-mail: [nass@nass.usda.gov](mailto:nass@nass.usda.gov).

The U.S. Department of Agriculture (USDA) prohibits discrimination in all its programs and activities on the basis of race, color, national origin, age, disability, and where applicable, sex, marital status, familial status, parental status, religion, sexual orientation, genetic information, political beliefs, reprisal, or because all or a part of an individual's income is derived from any public assistance program. (Not all prohibited bases apply to all programs.) Persons with disabilities who require alternative means for communication of program information (Braille, large print, audiotape, etc.) should contact USDA's TARGET Center at (202) 720-2600 (voice and TDD).

To file a complaint of discrimination, write to USDA, Director, Office of Civil Rights, 1400 Independence Avenue, S.W., Washington, D.C. 20250-9410, or call (800) 795-3272 (voice) or (202) 720-6382 (TDD). USDA is an equal opportunity provider and employer.