



NASS

FACT FINDERS FOR AGRICULTURE
UNITED STATES DEPARTMENT OF AGRICULTURE

Washington, D.C.

Dairy Products

Released May 4, 2007, by the National Agricultural Statistics Service (NASS), Agricultural Statistics Board, U.S. Department of Agriculture. For information on *Dairy Products* call Shawn Clark at (202) 690-3236, office hours 7:30 a.m. to 4:00 p.m. ET.

March 2007 Highlights

Total cheese output (excluding cottage cheese) was 837 million pounds, 1.9 percent above March 2006 and 11.8 percent above February 2007.

Italian type cheese production totaled 360 million pounds, 3.4 percent above March 2006 and 12.7 percent above February 2007.

American type cheese production totaled 338 million pounds, 0.7 percent above March 2006 and 10.8 percent above February 2007.

Butter production was 140 million pounds, 1.1 percent below March 2006 but 4.4 percent above February 2007.

Dry Milk Powders: (comparisons with March 2006)

Nonfat dry milk, human --- 118 million pounds, down 8.8 percent.

Skim milk powders --- 10.2 million pounds, down 52.8 percent.

Whey products: (comparisons with March 2006)

Dry whey, total --- 98.7 million pounds, down 2.3 percent.

Lactose, human and animal --- 64.8 million pounds, up 4.3 percent.

Whey protein concentrate, total --- 35.2 million pounds, down 6.9 percent.

Frozen products: (comparisons with March 2006)

Ice cream, Regular (hard) --- 78.1 million gallons, down 4.9 percent.

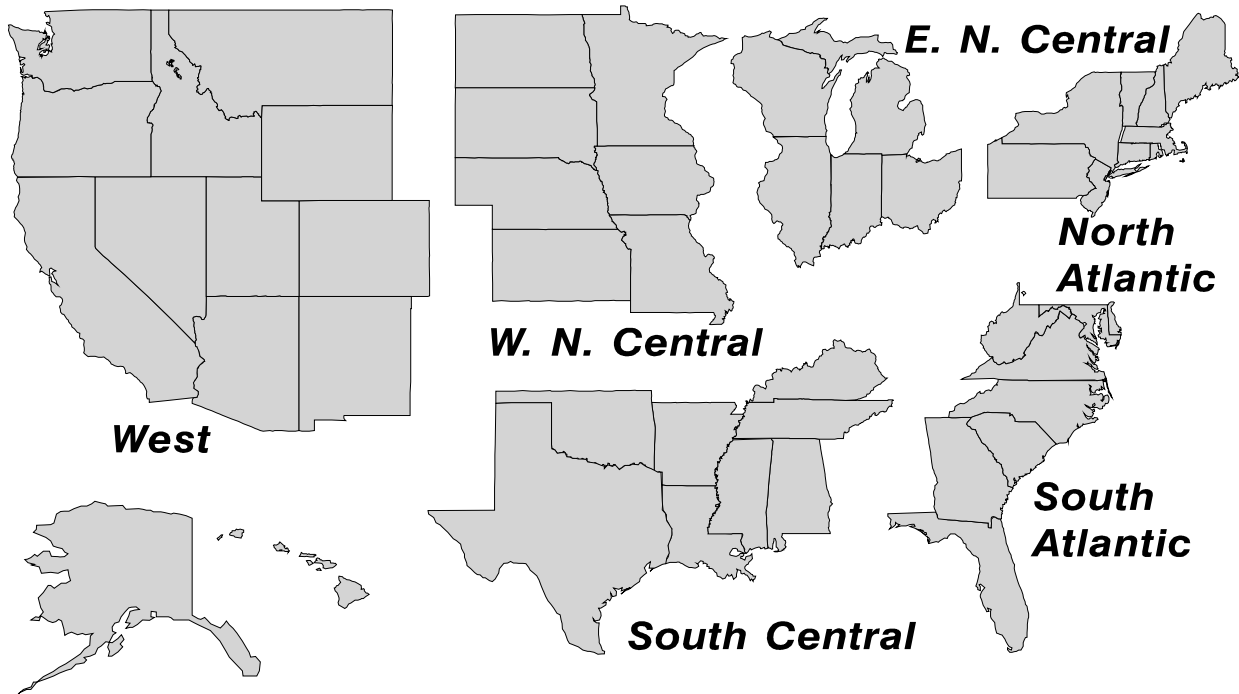
Ice cream, Lowfat (total) --- 35.4 million gallons, up 11.2 percent.

Sherbet (hard) --- 4.82 million gallons, up 4.0 percent.

Frozen Yogurt (total) --- 6.52 million gallons, up 6.4 percent.

U. S. Geographic Regions Dairy Products

If we are not able to publish a region for confidentiality reasons, it will be combined with other regions when possible. For example, if North Atlantic can not be published, then it will be combined with South Atlantic to publish Atlantic. The West North Central and East North Central will be combined, if necessary, to form North Central. In the event that neither could be published, they may be combined with South Central to publish Central. Some tables will have only limited regions shown, therefore the regions may not add to the United States total.



Contents

	Page
Dairy Products: Production by Product, United States	1
Whey and Modified Whey Products: Production, Stocks, and Prices, United States	2
Dairy Products: Production by Product and Month, United States	3
Select Commodities by State and United States	10
Canned Milk and Dry Milk Products: Manufacturer's Shipments, Stocks, and Selling Prices	15
Procedures and Reliability	16
Information Contacts	16

**Dairy Products: Production by Product,
United States, March, 2006-2007**

Product	Mar 2006	Feb 2007 ¹	Mar 2007	Change From	
				Mar 2006	Feb 2007
	<i>1,000 Pounds</i>	<i>1,000 Pounds</i>	<i>1,000 Pounds</i>	<i>Percent</i>	<i>Percent</i>
Butter	141,714	134,171	140,102	-1.1	4.4
Cheese					
American Types ²	336,095	305,474	338,479	0.7	10.8
Cheddar	267,799	248,714	270,073	0.8	8.6
Swiss	26,524	23,180	26,425	-0.4	14.0
Brick and Muenster	9,137	7,948	8,873	-2.9	11.6
Cream and Neufchatel	59,042	51,856	60,238	2.0	16.2
Hispanic	15,882	14,318	16,884	6.3	17.9
Mozzarella	273,367	256,343	284,763	4.2	11.1
Other Italian Types	74,691	63,242	75,297	0.8	19.1
Total Italian Types	348,058	319,585	360,060	3.4	12.7
All Other Types	26,067	26,135	25,818	-1.0	-1.2
Total	820,805	748,496	836,777	1.9	11.8
Cottage Cheese, Curd ³	40,912	35,766	41,760	2.1	16.8
Cottage Cheese, Cream ⁴	32,376	28,326	31,919	-1.4	12.7
Cottage Cheese, Lowfat ⁵	34,771	32,281	37,622	8.2	16.5
Canned Evaporated and Condensed Whole Milk	45,796	36,158	41,124	-10.2	13.7
Dry Whole Milk	2,421	2,494	2,195	-9.3	-12.0
Nonfat Dry Milk, Human Skim Milk Powders ⁶	128,867	98,098	117,517	-8.8	19.8
Dry Skim Milk, Animal	577	288	354	-38.6	22.9
Dry Buttermilk	7,542	7,281	7,459	-1.1	2.4
Sour Cream	92,880	80,054	88,425	-4.8	10.5
Yogurt, Plain & Flavored	307,110	285,283	312,890	1.9	9.7
	<i>1,000 Gallons</i>	<i>1,000 Gallons</i>	<i>1,000 Gallons</i>	<i>Percent</i>	<i>Percent</i>
Frozen Products					
Ice Cream, Regular, Hard	82,123	65,530	78,106	-4.9	19.2
Ice Cream, Lowfat, Hard	10,616	10,789	11,743	10.6	8.8
Ice Cream, Lowfat, Soft	21,229	17,264	23,680	11.5	37.2
Ice Cream, Lowfat, Total	31,845	28,053	35,423	11.2	26.3
Ice Cream, Nonfat, Hard	1,292	960	1,180	-8.7	22.9
Sherbet, Hard	4,634	3,854	4,818	4.0	25.0
Water and Juice Ices	6,432	4,148	5,781	-10.1	39.4
Frozen Yogurt, Total	6,126	4,151	6,521	6.4	57.1
Regular & Lowfat, Hard	1,517	1,488	1,861	22.7	25.1
Nonfat, Hard	1,058	510	627	-40.7	22.9
Other Frozen Dairy Products	1,068	926	984	-7.9	6.3
Mix for Frozen Products					
Ice Cream Mix	46,298	36,314	44,877	-3.1	23.6
Ice Cream, Lowfat, Mix	18,896	16,016	20,360	7.7	27.1
Ice Cream, Nonfat, Mix	821	578	701	-14.6	21.3
Sherbet Mix	3,436	2,861	3,549	3.3	24.0
Yogurt Mix	3,671	2,516	3,952	7.7	57.1

¹ Revised.

² Includes Cheddar, Colby, Monterey, and Jack.

³ Mostly used for processing into cream or lowfat cottage cheese.

⁴ Fat content 4 percent or more.

⁵ Fat content less than 4 percent.

⁶ Includes protein standardized and blends.

**Whey and Modified Whey Products: Production, Stocks,
and Prices, United States, March, 2006-2007**

Product	Mar 2006	Feb 2007 ¹	Mar 2007	Change From	
				Mar 2006	Feb 2007
Production					
	<i>1,000 Pounds</i>	<i>1,000 Pounds</i>	<i>1,000 Pounds</i>	<i>Percent</i>	<i>Percent</i>
Condensed Whey, Solids Content ²					
Sweet-Type, Human	9,745	7,917	8,646	-11.3	9.2
Dry Whey Products					
Dry Whey, Human	97,504	85,612	94,606	-3.0	10.5
Dry Whey, Animal	3,449	4,620	4,074	18.1	-11.8
Dry Whey, Total	100,953	90,232	98,680	-2.3	9.4
Reduced Lactose and Minerals					
Human Food	4,046	2,853	4,259	5.3	49.3
Animal Feed	4,027	4,132	4,428	10.0	7.2
Lactose, Human and Animal	62,165	59,671	64,838	4.3	8.7
Whey					
Protein Concentrate					
Human ³	33,353	26,319	31,151	-6.6	18.4
Animal ³	4,413	3,113	4,007	-9.2	28.7
Total ³	37,766	29,432	35,158	-6.9	19.5
25.0-49.9 Percent ⁴	26,863	19,028	22,891	-14.8	20.3
50.0-89.9 Percent ⁴	10,903	10,404	12,267	12.5	17.9
Protein Isolates ⁵	2,107	2,726	3,135	48.8	15.0
Manufacturers' Stocks End-of-Month ⁶					
	<i>1,000 Pounds</i>	<i>1,000 Pounds</i>	<i>1,000 Pounds</i>	<i>Percent</i>	<i>Percent</i>
Dry Whey Products					
Dry Whey, Human	40,744	37,528	40,209	-1.3	7.1
Dry Whey, Animal	1,302	1,676	1,084	-16.7	-35.3
Dry Whey, Total	42,046	39,204	41,293	-1.8	5.3
Reduced Lactose and Minerals					
Human and Animal ⁷	6,221	4,891	5,361	-13.8	9.6
Lactose, Human and Animal	39,317	40,518	42,294	7.6	4.4
Whey					
Protein Concentrate					
Human ³	29,051	23,156	23,243	-20.0	0.4
Animal ³	2,334	1,980	1,918	-17.8	-3.1
Total ³	31,385	25,136	25,161	-19.8	0.1
25.0-49.9 Percent ⁴	21,190	15,004	15,135	-28.6	0.9
50.0-89.9 Percent ⁴	10,195	10,132	10,026	-1.7	-1.0
Manufacturers' Selling Price ⁸					
	<i>Cents per Pound</i>	<i>Cents per Pound</i>	<i>Cents per Pound</i>	<i>Cents Change</i>	<i>Cents Change</i>
Dry Whey, Animal	28.2	58.4	65.3	37.1	6.9

¹ Revised.

² Final marketable product only. Does not include quantity used or shipped to another plant for further processing into dry whey or modified whey products. Does not include sweet-type, animal whey.

³ Whey Protein Concentrate, 25.0 to 89.9 percent.

⁴ Whey Protein Concentrate, Human and Animal.

⁵ Whey Protein Isolate, 90.0 percent or greater.

⁶ Stocks held by manufacturers at all points and in transit.

⁷ Reduced lactose and minerals stocks combined to avoid disclosure of individual operations.

⁸ Prices for bulk goods, f.o.b. plant. Average monthly prices reported by firms.

**Dairy Products: Production by Product and Month,
United States, 2006-2007 ¹**

Product and Month	By Month			Cumulative		
	2006	2007	Change From 2006	2006	2007	Change From 2006
	<i>1,000 Pounds</i>	<i>1,000 Pounds</i>	<i>Percent</i>	<i>1,000 Pounds</i>	<i>1,000 Pounds</i>	<i>Percent</i>
Total Cheese						
Jan	782,671	825,969	5.5	782,671	825,969	5.5
Feb	720,501	748,496	3.9	1,503,172	1,574,465	4.7
Mar	820,805	836,777	1.9	2,323,977	2,411,242	3.8
Apr	793,585			3,117,562		
May	820,034			3,937,596		
Jun	796,104			4,733,700		
Jul	775,398			5,509,098		
Aug	795,133			6,304,231		
Sep	788,604			7,092,835		
Oct	812,276			7,905,111		
Nov	798,104			8,703,215		
Dec	831,116			9,534,331		
American Cheese						
Jan	325,636	343,095	5.4	325,636	343,095	5.4
Feb	299,035	305,474	2.2	624,671	648,569	3.8
Mar	336,095	338,479	0.7	960,766	987,048	2.7
Apr	337,267			1,298,033		
May	346,162			1,644,195		
Jun	331,375			1,975,570		
Jul	327,511			2,303,081		
Aug	318,071			2,621,152		
Sep	320,115			2,941,267		
Oct	320,925			3,262,192		
Nov	312,210			3,574,402		
Dec	338,204			3,912,606		
Cheddar Cheese						
Jan	265,842	274,082	3.1	265,842	274,082	3.1
Feb	241,532	248,714	3.0	507,374	522,796	3.0
Mar	267,799	270,073	0.8	775,173	792,869	2.3
Apr	271,722			1,046,895		
May	274,229			1,321,124		
Jun	263,380			1,584,504		
Jul	265,953			1,850,457		
Aug	250,375			2,100,832		
Sep	254,242			2,355,074		
Oct	249,425			2,604,499		
Nov	247,195			2,851,694		
Dec	273,060			3,124,754		

See footnote(s) at end of table.

--continued

**Dairy Products: Production by Product and Month,
United States, 2006-2007 ¹ (continued)**

Product and Month	By Month			Cumulative		
	2006	2007	Change From 2006	2006	2007	Change From 2006
	<i>1,000 Pounds</i>	<i>1,000 Pounds</i>	<i>Percent</i>	<i>1,000 Pounds</i>	<i>1,000 Pounds</i>	<i>Percent</i>
Italian Cheese						
Jan	330,843	353,589	6.9	330,843	353,589	6.9
Feb	306,391	319,585	4.3	637,234	673,174	5.6
Mar	348,058	360,060	3.4	985,292	1,033,234	4.9
Apr	331,202			1,316,494		
May	337,437			1,653,931		
Jun	328,269			1,982,200		
Jul	320,586			2,302,786		
Aug	333,159			2,635,945		
Sep	327,134			2,963,079		
Oct	339,721			3,302,800		
Nov	330,142			3,632,942		
Dec	355,560			3,988,502		
Mozzarella						
Jan	259,949	279,383	7.5	259,949	279,383	7.5
Feb	240,457	256,343	6.6	500,406	535,726	7.1
Mar	273,367	284,763	4.2	773,773	820,489	6.0
Apr	262,340			1,036,113		
May	265,835			1,301,948		
Jun	260,874			1,562,822		
Jul	255,341			1,818,163		
Aug	261,166			2,079,329		
Sep	258,736			2,338,065		
Oct	266,315			2,604,380		
Nov	259,149			2,863,529		
Dec	281,033			3,144,562		
Other Italian						
Jan	70,894	74,206	4.7	70,894	74,206	4.7
Feb	65,934	63,242	-4.1	136,828	137,448	0.5
Mar	74,691	75,297	0.8	211,519	212,745	0.6
Apr	68,862			280,381		
May	71,602			351,983		
Jun	67,395			419,378		
Jul	65,245			484,623		
Aug	71,993			556,616		
Sep	68,398			625,014		
Oct	73,406			698,420		
Nov	70,993			769,413		
Dec	74,527			843,940		

See footnote(s) at end of table.

--continued

**Dairy Products: Production by Product and Month,
United States, 2006-2007 ¹ (continued)**

Product and Month	By Month			Cumulative		
	2006	2007	Change From 2006	2006	2007	Change From 2006
	<i>1,000 Pounds</i>	<i>1,000 Pounds</i>	<i>Percent</i>	<i>1,000 Pounds</i>	<i>1,000 Pounds</i>	<i>Percent</i>
Butter						
Jan	149,832	151,030	0.8	149,832	151,030	0.8
Feb	136,840	134,171	-2.0	286,672	285,201	-0.5
Mar	141,714	140,102	-1.1	428,386	425,303	-0.7
Apr	127,681			556,067		
May	128,556			684,623		
Jun	101,110			785,733		
Jul	94,729			880,462		
Aug	88,880			969,342		
Sep	104,317			1,073,659		
Oct	119,133			1,192,792		
Nov	118,097			1,310,889		
Dec	137,593			1,448,482		
Nonfat Dry Milk, Human						
Jan	111,278	108,849	-2.2	111,278	108,849	-2.2
Feb	117,998	98,098	-16.9	229,276	206,947	-9.7
Mar	128,867	117,517	-8.8	358,143	324,464	-9.4
Apr	130,613			488,756		
May	132,935			621,691		
Jun	116,846			738,537		
Jul	88,594			827,131		
Aug	73,193			900,324		
Sep	63,278			963,602		
Oct	69,989			1,033,591		
Nov	76,914			1,110,505		
Dec	113,567			1,224,072		
Skim Milk Powders ²						
Jan	30,883	10,812	-65.0	30,883	10,812	-65.0
Feb	27,087	11,032	-59.3	57,970	21,844	-62.3
Mar	21,580	10,195	-52.8	79,550	32,039	-59.7
Apr	14,014			93,564		
May	19,762			113,326		
Jun	23,871			137,197		
Jul	30,900			168,097		
Aug	25,638			193,735		
Sep	22,873			216,608		
Oct	28,967			245,575		
Nov	26,529			272,104		
Dec	16,970			289,074		

See footnote(s) at end of table.

--continued

**Dairy Products: Production by Product and Month,
United States, 2006-2007 ¹ (continued)**

Product and Month	By Month			Cumulative		
	2006	2007	Change From 2006	2006	2007	Change From 2006
	<i>1,000 Pounds</i>	<i>1,000 Pounds</i>	<i>Percent</i>	<i>1,000 Pounds</i>	<i>1,000 Pounds</i>	<i>Percent</i>
Dry Whey, Total ³						
Jan	88,391	96,145	8.8	88,391	96,145	8.8
Feb	89,695	90,232	0.6	178,086	186,377	4.7
Mar	100,953	98,680	-2.3	279,039	285,057	2.2
Apr	95,662			374,701		
May	97,295			471,996		
Jun	89,701			561,697		
Jul	95,226			656,923		
Aug	91,547			748,470		
Sep	86,271			834,741		
Oct	87,434			922,175		
Nov	85,865			1,008,040		
Dec	92,306			1,100,346		
Lactose, Human and Animal						
Jan	64,539	65,064	0.8	64,539	65,064	0.8
Feb	56,311	59,671	6.0	120,850	124,735	3.2
Mar	62,165	64,838	4.3	183,015	189,573	3.6
Apr	63,402			246,417		
May	66,057			312,474		
Jun	60,027			372,501		
Jul	60,333			432,834		
Aug	64,225			497,059		
Sep	58,964			556,023		
Oct	62,296			618,319		
Nov	60,505			678,824		
Dec	59,832			738,656		
Whey Protein Concentrate, Total						
Jan	37,162	33,055	-11.1	37,162	33,055	-11.1
Feb	34,436	29,432	-14.5	71,598	62,487	-12.7
Mar	37,766	35,158	-6.9	109,364	97,645	-10.7
Apr	37,525			146,889		
May	37,373			184,262		
Jun	36,190			220,452		
Jul	35,704			256,156		
Aug	35,024			291,180		
Sep	34,581			325,761		
Oct	34,581			360,342		
Nov	33,116			393,458		
Dec	34,266			427,724		

See footnote(s) at end of table.

--continued

**Dairy Products: Production by Product and Month,
United States, 2006-2007 ¹ (continued)**

Product and Month	By Month			Cumulative		
	2006	2007	Change From 2006	2006	2007	Change From 2006
	<i>1,000 Pounds</i>	<i>1,000 Pounds</i>	<i>Percent</i>	<i>1,000 Pounds</i>	<i>1,000 Pounds</i>	<i>Percent</i>
Cream Cottage Cheese						
Jan	29,943	29,227	-2.4	29,943	29,227	-2.4
Feb	29,095	28,326	-2.6	59,038	57,553	-2.5
Mar	32,376	31,919	-1.4	91,414	89,472	-2.1
Apr	28,670			120,084		
May	32,367			152,451		
Jun	32,315			184,766		
Jul	29,952			214,718		
Aug	35,692			250,410		
Sep	30,412			280,822		
Oct	30,161			310,983		
Nov	29,538			340,521		
Dec	26,957			367,478		
Lowfat Cottage Cheese						
Jan	34,117	34,556	1.3	34,117	34,556	1.3
Feb	33,186	32,281	-2.7	67,303	66,837	-0.7
Mar	34,771	37,622	8.2	102,074	104,459	2.3
Apr	32,504			134,578		
May	35,874			170,452		
Jun	34,777			205,229		
Jul	34,037			239,266		
Aug	38,861			278,127		
Sep	34,458			312,585		
Oct	33,678			346,263		
Nov	31,775			378,038		
Dec	29,807			407,845		
Sour Cream						
Jan	85,732	90,856	6.0	85,732	90,856	6.0
Feb	80,267	80,054	-0.3	165,999	170,910	3.0
Mar	92,880	88,425	-4.8	258,879	259,335	0.2
Apr	83,097			341,976		
May	94,154			436,130		
Jun	92,565			528,695		
Jul	87,139			615,834		
Aug	99,020			714,854		
Sep	87,555			802,409		
Oct	101,849			904,258		
Nov	113,822			1,018,080		
Dec	103,385			1,121,465		

See footnote(s) at end of table.

--continued

**Dairy Products: Production by Product and Month,
United States, 2006-2007 ¹ (continued)**

Product and Month	By Month			Cumulative		
	2006	2007	Change From 2006	2006	2007	Change From 2006
	<i>1,000 Gallons</i>	<i>1,000 Gallons</i>	<i>Percent</i>	<i>1,000 Gallons</i>	<i>1,000 Gallons</i>	<i>Percent</i>
Ice Cream, Regular, Hard						
Jan	65,338	64,840	-0.8	65,338	64,840	-0.8
Feb	65,937	65,530	-0.6	131,275	130,370	-0.7
Mar	82,123	78,106	-4.9	213,398	208,476	-2.3
Apr	79,616			293,014		
May	84,890			377,904		
Jun	91,954			469,858		
Jul	88,628			558,486		
Aug	89,305			647,791		
Sep	74,979			722,770		
Oct	66,486			789,256		
Nov	58,922			848,178		
Dec	51,144			899,322		
Ice Cream, Lowfat, Total						
Jan	24,286	26,726	10.0	24,286	26,726	10.0
Feb	24,566	28,053	14.2	48,852	54,779	12.1
Mar	31,845	35,423	11.2	80,697	90,202	11.8
Apr	32,333			113,030		
May	36,336			149,366		
Jun	42,339			191,705		
Jul	37,770			229,475		
Aug	36,448			265,923		
Sep	30,887			296,810		
Oct	28,645			325,455		
Nov	23,224			348,679		
Dec	23,521			372,200		
Sherbet, Hard						
Jan	3,944	3,311	-16.0	3,944	3,311	-16.0
Feb	4,135	3,854	-6.8	8,079	7,165	-11.3
Mar	4,634	4,818	4.0	12,713	11,983	-5.7
Apr	4,375			17,088		
May	4,662			21,750		
Jun	4,984			26,734		
Jul	4,886			31,620		
Aug	4,830			36,450		
Sep	3,795			40,245		
Oct	3,642			43,887		
Nov	3,079			46,966		
Dec	2,808			49,774		

See footnote(s) at end of table.

--continued

**Dairy Products: Production by Product and Month,
United States, 2006-2007 ¹ (continued)**

Product and Month	By Month			Cumulative		
	2006	2007	Change From 2006	2006	2007	Change From 2006
	<i>1,000 Pounds</i>	<i>1,000 Pounds</i>	<i>Percent</i>	<i>1,000 Pounds</i>	<i>1,000 Pounds</i>	<i>Percent</i>
Yogurt, Plain & Flavored						
Jan	269,591	286,256	6.2	269,591	286,256	6.2
Feb	260,430	285,283	9.5	530,021	571,539	7.8
Mar	307,110	312,890	1.9	837,131	884,429	5.7
Apr	270,181			1,107,312		
May	282,100			1,389,412		
Jun	290,529			1,679,941		
Jul	266,544			1,946,485		
Aug	294,044			2,240,529		
Sep	288,769			2,529,298		
Oct	273,415			2,802,713		
Nov	238,194			3,040,907		
Dec	253,680			3,294,587		
	<i>1,000 Gallons</i>	<i>1,000 Gallons</i>	<i>Percent</i>	<i>1,000 Gallons</i>	<i>1,000 Gallons</i>	<i>Percent</i>
Yogurt, Frozen						
Jan	4,563	4,589	0.6	4,563	4,589	0.6
Feb	4,746	4,151	-12.5	9,309	8,740	-6.1
Mar	6,126	6,521	6.4	15,435	15,261	-1.1
Apr	5,897			21,332		
May	6,636			27,968		
Jun	6,697			34,665		
Jul	6,368			41,033		
Aug	6,877			47,910		
Sep	5,756			53,666		
Oct	5,296			58,962		
Nov	4,408			63,370		
Dec	4,080			67,450		

¹ February 2007 data revised.

² Includes protein standardized and blends.

³ Excludes all modified dry whey products.

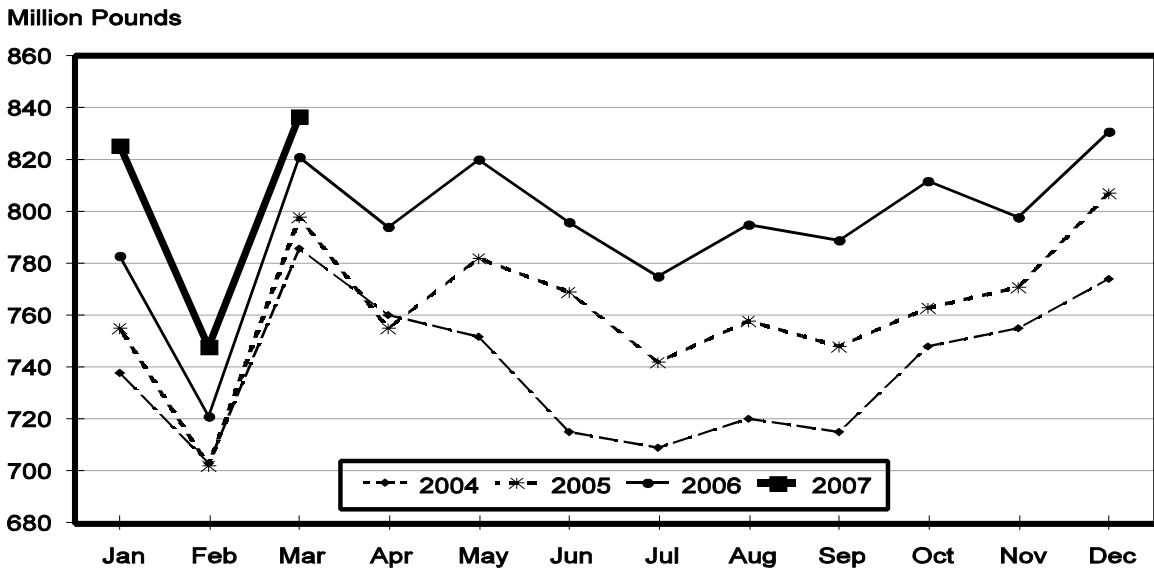
Total Cheese, Excluding Cottage Cheese: Production by State and United States, March 2006-2007

State	Mar 2006	Feb ¹ 2007	Mar 2007	Change From	
				Mar 2006	Feb 2007
	<i>1,000 Pounds</i>	<i>1,000 Pounds</i>	<i>1,000 Pounds</i>	<i>Percent</i>	<i>Percent</i>
CA	189,462	181,656	201,761	6.5	11.1
ID	67,127	59,529	67,262	0.2	13.0
IL	7,464	6,007	6,683	-10.5	11.3
IA	13,536	11,333	12,319	-9.0	8.7
MN	57,252	49,147	53,085	-7.3	8.0
NM	43,528	52,804	54,495	25.2	3.2
NY	60,533	54,115	65,563	8.3	21.2
OH	17,342	15,179	16,997	-2.0	12.0
PA	35,270	29,218	34,042	-3.5	16.5
SD	15,523	14,386	15,512	-0.1	7.8
UT	8,230	7,242	7,509	-8.8	3.7
WI	215,003	184,517	208,560	-3.0	13.0
Oth Sts ²	90,535	83,363	92,989	2.7	11.5
US	820,805	748,496	836,777	1.9	11.8
Atlantic	114,407	99,934	118,859	3.9	18.9
Central	356,214	311,032	344,313	-3.3	10.7
West	350,184	337,530	373,605	6.7	10.7

¹ Revised.

² States not shown when fewer than 3 plants reported or individual plant operations could be disclosed. Percent change shown only when comparable States are included in the calculation.

Total Cheese Production United States



American Cheese: Production by State and United States, March 2006-2007

State	Mar 2006	Feb ¹ 2007	Mar 2007	Change From	
				Mar 2006	Feb 2007
	<i>1,000 Pounds</i>	<i>1,000 Pounds</i>	<i>1,000 Pounds</i>	<i>Percent</i>	<i>Percent</i>
CA	73,552	66,054	71,350	-3.0	8.0
ID	48,559	47,780	53,126	9.4	11.2
MN	53,351	45,483	49,516	-7.2	8.9
OH	3,462	2,364	2,586	-25.3	9.4
OR	9,578	8,525	9,544	-0.4	12.0
WI	73,064	59,415	66,900	-8.4	12.6
Oth Sts ²	74,529	75,853	85,457	14.7	12.7
US	336,095	305,474	338,479	0.7	10.8
Atlantic	11,687	12,000	12,151	4.0	1.3
Central	154,103	128,082	141,859	-7.9	10.8
West	170,305	165,392	184,469	8.3	11.5

¹ Revised.

² States not shown when fewer than 3 plants reported or individual plant operations could be disclosed. Percent change shown only when comparable States are included in the calculation.

Cheddar Cheese: Production by State and United States, March 2006-2007

State	Mar 2006	Feb ¹ 2007	Mar 2007	Change From	
				Mar 2006	Feb 2007
	<i>1,000 Pounds</i>	<i>1,000 Pounds</i>	<i>1,000 Pounds</i>	<i>Percent</i>	<i>Percent</i>
CA	42,838	41,369	41,453	-3.2	0.2
ID	44,886	44,817	49,204	9.6	9.8
MN	48,356	41,434	45,319	-6.3	9.4
OH	2,255	1,764	1,829	-18.9	3.7
WI	57,259	49,404	55,600	-2.9	12.5
Oth Sts ²	72,205	69,926	76,668	6.2	9.6
US	267,799	248,714	270,073	0.8	8.6
Atlantic	11,451	11,647	12,073	5.4	3.7
Central	125,562	108,640	119,924	-4.5	10.4
West	130,786	128,427	138,076	5.6	7.5

¹ Revised.

² States not shown when fewer than 3 plants reported or individual plant operations could be disclosed. Percent change shown only when comparable States are included in the calculation.

**Italian Cheese, Total: Production by State and
United States, March 2006-2007**

State	Mar 2006	Feb ¹ 2007	Mar 2007	Change From	
				Mar 2006	Feb 2007
	<i>1,000 Pounds</i>	<i>1,000 Pounds</i>	<i>1,000 Pounds</i>	<i>Percent</i>	<i>Percent</i>
CA	98,056	96,748	109,382	11.6	13.1
ID	12,873	10,562	12,539	-2.6	18.7
NY	35,111	28,894	35,829	2.0	24.0
PA	23,001	19,938	21,863	-4.9	9.7
SD	8,071	7,284	7,782	-3.6	6.8
WI	104,324	91,170	103,060	-1.2	13.0
Oth Sts ²	66,622	64,989	69,605	4.5	7.1
US	348,058	319,585	360,060	3.4	12.7
Atlantic	67,925	56,321	67,121	-1.2	19.2
Central	134,560	121,147	134,928	0.3	11.4
West	145,573	142,117	158,011	8.5	11.2

¹ Revised.

² States not shown when fewer than 3 plants reported or individual plant operations could be disclosed. Percent change shown only when comparable States are included in the calculation.

Mozzarella Cheese: Production by State and United States, March 2006-2007

State	Mar 2006	Feb ¹ 2007	Mar 2007	Change From	
				Mar 2006	Feb 2007
	<i>1,000 Pounds</i>	<i>1,000 Pounds</i>	<i>1,000 Pounds</i>	<i>Percent</i>	<i>Percent</i>
CA	88,045	87,585	98,281	11.6	12.2
ID	11,332	9,007	10,914	-3.7	21.2
NY	16,286	14,537	17,815	9.4	22.5
PA	19,918	17,260	18,457	-7.3	6.9
WI	76,082	66,198	73,800	-3.0	11.5
Oth Sts ²	61,704	61,756	65,496	6.1	6.1
US	273,367	256,343	284,763	4.2	11.1
Atlantic	42,366	37,172	42,502	0.3	14.3
Central	97,894	88,768	97,890		10.3
West	133,107	130,403	144,371	8.5	10.7

¹ Revised.

² States not shown when fewer than 3 plants reported or individual plant operations could be disclosed. Percent change shown only when comparable States are included in the calculation.

Butter: Production by State and United States, March 2006-2007

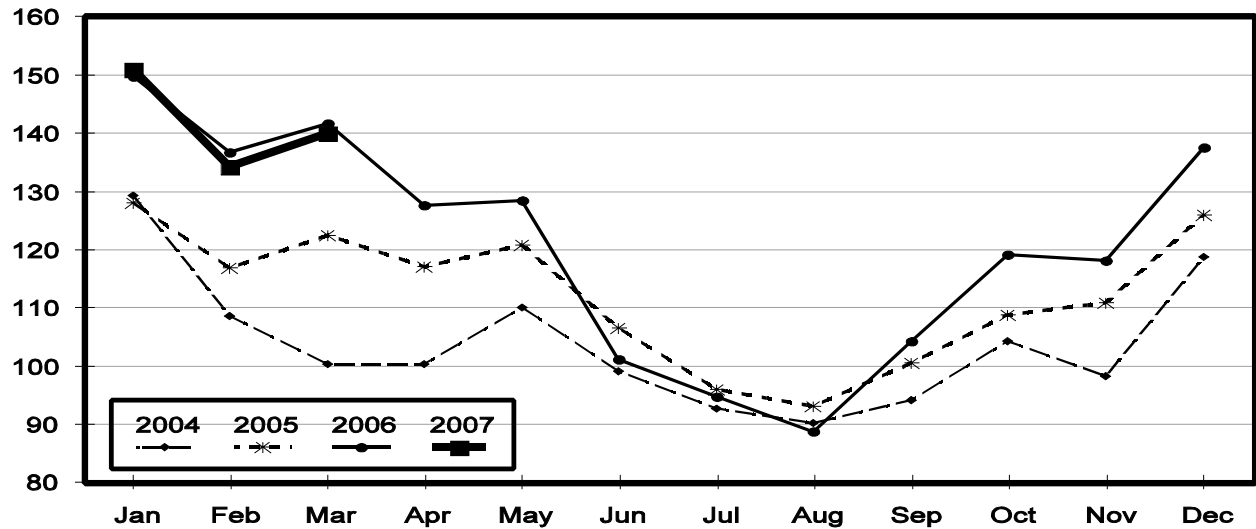
State	Mar 2006	Feb ¹ 2007	Mar 2007	Change From	
				Mar 2006	Feb 2007
	<i>1,000 Pounds</i>	<i>1,000 Pounds</i>	<i>1,000 Pounds</i>	<i>Percent</i>	<i>Percent</i>
CA	44,065	40,115	44,313	0.6	10.5
NY	1,629	1,592	1,886	15.8	18.5
PA	7,555	6,177	7,180	-5.0	16.2
WI	36,427	32,456	31,260	-14.2	-3.7
Oth Sts ²	52,038	53,831	55,463	6.6	3.0
US	141,714	134,171	140,102	-1.1	4.4
Atlantic	14,163	13,466	13,989	-1.2	3.9
Central	63,801	59,032	60,319	-5.5	2.2
West	63,750	61,673	65,794	3.2	6.7

¹ Revised.

² States not shown when fewer than 3 plants reported or individual plant operations could be disclosed. Percent change shown only when comparable States are included in the calculation.

Total Butter Production United States

Million Pounds



**Nonfat Dry Milk, Human: Production by State
and United States, March 2006-2007**

State	Mar 2006	Feb ¹ 2007	Mar 2007	Change From	
				Mar 2006	Feb 2007
	<i>1,000 Pounds</i>	<i>1,000 Pounds</i>	<i>1,000 Pounds</i>	<i>Percent</i>	<i>Percent</i>
CA	61,684	59,082	64,214	4.1	8.7
Oth Sts ²	67,183	39,016	53,303	-20.7	36.6
US	128,867	98,098	117,517	-8.8	19.8
Atlantic	21,202	10,513	13,656	-35.6	29.9
Central	14,620	11,821	12,141	-17.0	2.7
West	93,045	75,764	91,720	-1.4	21.1

¹ Revised.

² States not shown when fewer than 3 plants reported or individual plant operations could be disclosed. Percent change shown only when comparable States are included in the calculation.

**Dry Whey, Human: Production by State
and United States, March 2006-2007**

State	Mar 2006	Feb ¹ 2007	Mar 2007	Change From	
				Mar 2006	Feb 2007
	<i>1,000 Pounds</i>	<i>1,000 Pounds</i>	<i>1,000 Pounds</i>	<i>Percent</i>	<i>Percent</i>
CA	9,872	7,364	7,596	-23.1	3.2
MN	4,224	4,595	5,033	19.2	9.5
NY	11,495	9,496	11,456	-0.3	20.6
WI	28,127	24,500	27,300	-2.9	11.4
Oth Sts ²	43,786	39,657	43,221	-1.3	9.0
US	97,504	85,612	94,606	-3.0	10.5
Atlantic	21,088	18,023	20,806	-1.3	15.4
Central	43,505	39,641	43,463	-0.1	9.6
West	32,911	27,948	30,337	-7.8	8.5

¹ Revised.

² States not shown when fewer than 3 plants reported or individual plant operations could be disclosed. Percent change shown only when comparable States are included in the calculation.

Ice Cream, Hard: Production by State and United States, March 2006-2007

State	Mar 2006	Feb ¹ 2007	Mar 2007	Change From	
				Mar 2006	Feb 2007
	<i>1,000 Gallons</i>	<i>1,000 Gallons</i>	<i>1,000 Gallons</i>	<i>Percent</i>	<i>Percent</i>
CA	13,118	9,451	12,149	-7.4	28.5
FL	1,555	1,500	1,600	2.9	6.7
IN	7,020	5,302	6,301	-10.2	18.8
MA	4,287	3,193	2,628	-38.7	-17.7
MN	3,566	2,895	3,585	0.5	23.8
MO	2,587	2,119	2,450	-5.3	15.6
NY	2,356	2,051	2,375	0.8	15.8
NC	1,378	1,205	1,349	-2.1	12.0
OH	2,445	1,963	2,073	-15.2	5.6
OR	1,122	774	990	-11.8	27.9
PA	3,111	2,005	2,523	-18.9	25.8
TN	1,523	1,330	1,544	1.4	16.1
TX	6,084	4,461	5,864	-3.6	31.5
UT	2,229	1,781	2,346	5.2	31.7
Oth Sts ²	29,742	25,500	30,329	2.0	18.9
US	82,123	65,530	78,106	-4.9	19.2
N Atl	12,451	10,853	10,834	-13.0	-0.2
S Atl	7,952	7,155	9,049	13.8	26.5
E N Cen	15,703	12,684	14,904	-5.1	17.5
W N Cen	14,009	11,191	13,596	-2.9	21.5
S Cen	12,114	8,822	11,010	-9.1	24.8
West	19,894	14,825	18,713	-5.9	26.2

¹ Revised.

² States not shown when fewer than 3 plants reported or individual plant operations could be disclosed. Percent change shown only when comparable States are included in the calculation.

**Canned Milk and Dry Milk Products: Manufacturers' Shipments,
and Stocks, March, 2006-2007**

Product	Mar 2006	Feb 2007 ¹	Mar 2007	Change From	
				Mar 2006	Feb 2007
	Manufacturers' Shipments²				
	<i>1,000 Pounds</i>	<i>1,000 Pounds</i>	<i>1,000 Pounds</i>	<i>Percent</i>	<i>Percent</i>
Nonfat Dry Milk, Human	114,722	98,047	108,061	-5.8	10.2
	Manufacturers' Stocks End-of-Month³				
	<i>1,000 Pounds</i>	<i>1,000 Pounds</i>	<i>1,000 Pounds</i>	<i>Percent</i>	<i>Percent</i>
Canned Evaporated and Condensed Whole Milk	68,029	49,807	52,399	-23.0	5.2
Nonfat Dry Milk, Human	125,982	74,719	76,964	-38.9	3.0
Dry Buttermilk, Total	15,632	5,588	5,975	-61.8	6.9

¹ Revised.

² For dry products, shipments of bulk goods only.

³ Stocks held by manufacturers at all points and in transit.

Procedures and Reliability: Estimates included in this report are based on data provided each month by manufacturers of these products. In 32 States, the State Departments of Agriculture assist in collection of data, which eliminates duplicate reporting and reduces respondent burden. Data are collected by mail, personal and telephone interviews following the close of each month. There were 1,080 manufacturers that made one or more products in 2006. Each month, reports are generally received from all dairy plants in States with small numbers of plants. In States with large numbers of plants, survey procedures are designed to obtain monthly reports from all large plants and from a sample of small plants. Monthly estimates are based upon returns from about 70 percent of the plants which account for 70 to 90 percent of the total production of major dairy products.

Revision Policy: Monthly estimates are subject to revision the month following the preliminary estimates. Annual estimates are published in the "**Dairy Products**" report published each April which includes any revisions made to current and previous year. An attempt is made to get information from all plants for preparing these estimates

Information Contacts

Listed below are the commodity specialists in the Livestock Branch of the National Agricultural Statistics Service to contact for additional information.

- Dan Kerestes, Chief, Livestock Branch (202) 720-3570
- William Weaver, Head, Livestock Section (202) 720-3570
 - Bruce Boess - Hogs and Pigs (202) 720-3106
 - Shawn Clark - Dairy Products (202) 690-3236
 - Jason Hardegree - Milk Production and Milk Cows (202) 720-3278
 - Benita Hodge - Livestock Slaughter (515) 284-4340
 - Scott Hollis - Sheep & Lambs, Goats (202) 720-4751
 - Mike Miller - Cattle, Cattle on Feed (202) 720-3040
 - Charmaine Wilson - Dairy Products Prices (202) 690-2168

ACCESS TO REPORTS!!

For your convenience, there are several ways to obtain NASS reports, data products, and services:

INTERNET ACCESS

All NASS reports are available free of charge on the worldwide Internet. For access, connect to the Internet and go to the NASS Home Page at: www.nass.usda.gov.

E-MAIL SUBSCRIPTION

All NASS reports are available by subscription free of charge direct to your e-mail address. Starting with the NASS Home Page at www.nass.usda.gov, under the right navigation, *Receive reports by Email*, click on **National** or **State**. Follow the instructions on the screen.

PRINTED REPORTS OR DATA PRODUCTS

CALL OUR TOLL-FREE ORDER DESK: 800-999-6779 (U.S. and Canada)
Other areas, please call 703-605-6220 FAX: 703-605-6900
(Visa, MasterCard, check, or money order acceptable for payment.)

ASSISTANCE

For **assistance** with general agricultural statistics or further information about NASS or its products or services, contact the **Agricultural Statistics Hotline** at **800-727-9540**, 7:30 a.m. to 4:00 p.m. ET, or e-mail: nass@nass.usda.gov.

The U.S. Department of Agriculture (USDA) prohibits discrimination in all its programs and activities on the basis of race, color, national origin, age, disability, and where applicable, sex, marital status, familial status, parental status, religion, sexual orientation, genetic information, political beliefs, reprisal, or because all or a part of an individual's income is derived from any public assistance program. (Not all prohibited bases apply to all programs.) Persons with disabilities who require alternative means for communication of program information (Braille, large print, audiotape, etc.) should contact USDA's TARGET Center at (202) 720-2600 (voice and TDD).

To file a complaint of discrimination, write to USDA, Director, Office of Civil Rights, 1400 Independence Avenue, S.W., Washington, D.C. 20250-9410, or call (800) 795-3272 (voice) or (202) 720-6382 (TDD). USDA is an equal opportunity provider and employer.