



NASS

FACT FINDERS FOR AGRICULTURE
UNITED STATES DEPARTMENT OF AGRICULTURE

Washington, D.C.

Dairy Products

Released June 1, 2007, by the National Agricultural Statistics Service (NASS), Agricultural Statistics Board, U.S. Department of Agriculture. For information on *Dairy Products* call Shawn Clark at (202) 690-3236, office hours 7:30 a.m. to 4:00 p.m. ET.

April 2007 Highlights

Total cheese output (excluding cottage cheese) was 803 million pounds, 1.2 percent above April 2006 but 4.1 percent below March 2007.

Italian type cheese production totaled 345 million pounds, 4.2 percent above April 2006 but 4.5 percent below March 2007.

American type cheese production totaled 327 million pounds, 3.1 percent below April 2006 and 3.4 percent below March 2007.

Butter production was 134 million pounds, 5.2 percent above April 2006 but 2.8 percent below March 2007.

Dry Milk Powders: (comparisons with April 2006)

Nonfat dry milk, human --- 128 million pounds, down 2.2 percent.

Skim milk powders --- 15.6 million pounds, up 11.1 percent.

Whey products: (comparisons with April 2006)

Dry whey, total --- 97.2 million pounds, up 1.6 percent.

Lactose, human and animal --- 63.1 million pounds, down 0.5 percent.

Whey protein concentrate, total --- 33.5 million pounds, down 10.8 percent.

Frozen products: (comparisons with April 2006)

Ice cream, Regular (hard) --- 79.4 million gallons, down 0.2 percent.

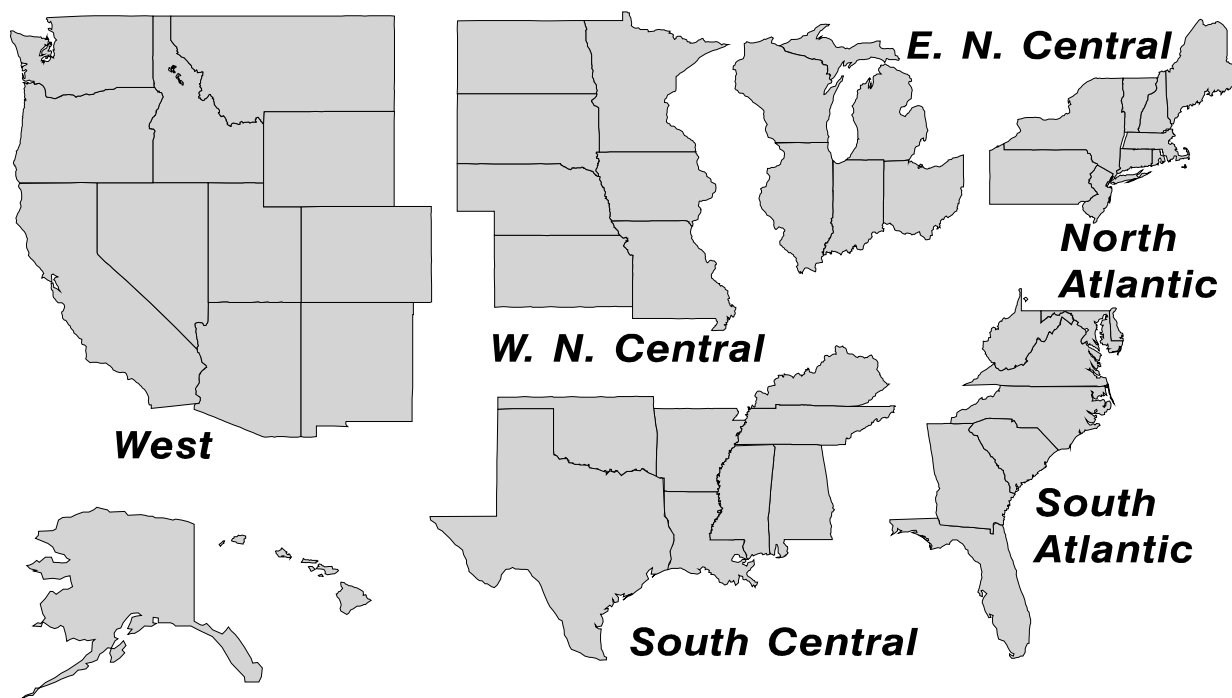
Ice cream, Lowfat (total) --- 37.2 million gallons, up 15.1 percent.

Sherbet (hard) --- 5.32 million gallons, up 21.5 percent.

Frozen Yogurt (total) --- 6.51 million gallons, up 10.4 percent.

U. S. Geographic Regions Dairy Products

If we are not able to publish a region for confidentiality reasons, it will be combined with other regions when possible. For example, if North Atlantic can not be published, then it will be combined with South Atlantic to publish Atlantic. The West North Central and East North Central will be combined, if necessary, to form North Central. In the event that neither could be published, they may be combined with South Central to publish Central. Some tables will have only limited regions shown, therefore the regions may not add to the United States total.



Contents

Page

Dairy Products: Production by Product, United States	1
Whey and Modified Whey Products: Production, Stocks, and Prices, United States	2
Dairy Products: Production by Product and Month, United States	3
Select Commodities by State and United States	10
Canned Milk and Dry Milk Products: Manufacturer's Shipments, Stocks, and Selling Prices	15
Procedures and Reliability	16
Information Contacts	16

**Dairy Products: Production by Product,
United States, April, 2006-2007**

Product	Apr 2006	Mar 2007 ¹	Apr 2007	Change From	
				Apr 2006	Mar 2007
	<i>1,000 Pounds</i>	<i>1,000 Pounds</i>	<i>1,000 Pounds</i>	<i>Percent</i>	<i>Percent</i>
Butter	127,681	138,196	134,358	5.2	-2.8
Cheese					
American Types ²	337,267	338,377	326,740	-3.1	-3.4
Cheddar	271,722	270,069	258,210	-5.0	-4.4
Swiss	26,640	26,426	26,389	-0.9	-0.1
Brick and Muenster	8,550	8,970	8,816	3.1	-1.7
Cream and Neufchatel	52,941	60,238	55,213	4.3	-8.3
Hispanic	15,109	16,785	14,853	-1.7	-11.5
Mozzarella	262,340	287,089	276,553	5.4	-3.7
Other Italian Types	68,862	74,102	68,419	-0.6	-7.7
Total Italian Types	331,202	361,191	344,972	4.2	-4.5
All Other Types	21,876	25,756	26,303	20.2	2.1
Total	793,585	837,743	803,286	1.2	-4.1
Cottage Cheese, Curd ³	36,793	41,772	39,495	7.3	-5.5
Cottage Cheese, Cream ⁴	28,670	32,027	30,519	6.4	-4.7
Cottage Cheese, Lowfat ⁵	32,504	37,770	34,838	7.2	-7.8
Canned Evaporated and Condensed Whole Milk	44,291	40,974	43,869	-1.0	7.1
Dry Whole Milk	1,613	2,355	2,388	48.0	1.4
Nonfat Dry Milk, Human Skim Milk Powders ⁶	130,613	118,034	127,788	-2.2	8.3
Dry Skim Milk, Animal	540	354	441	-18.3	24.6
Dry Buttermilk	6,703	7,234	6,898	2.9	-4.6
Sour Cream	83,097	90,687	88,208	6.2	-2.7
Yogurt, Plain & Flavored	270,181	313,746	304,364	12.7	-3.0
	<i>1,000 Gallons</i>	<i>1,000 Gallons</i>	<i>1,000 Gallons</i>	<i>Percent</i>	<i>Percent</i>
Frozen Products					
Ice Cream, Regular, Hard	79,616	78,818	79,446	-0.2	0.8
Ice Cream, Lowfat, Hard	10,733	12,134	12,802	19.3	5.5
Ice Cream, Lowfat, Soft	21,600	23,600	24,412	13.0	3.4
Ice Cream, Lowfat, Total	32,333	35,734	37,214	15.1	4.1
Ice Cream, Nonfat, Hard	1,334	1,171	1,210	-9.3	3.3
Sherbet, Hard	4,375	4,771	5,316	21.5	11.4
Water and Juice Ices	6,317	5,579	5,535	-12.4	-0.8
Frozen Yogurt, Total	5,897	6,524	6,509	10.4	-0.2
Regular & Lowfat, Hard	1,306	1,913	1,845	41.3	-3.6
Nonfat, Hard	875	585	769	-12.1	31.5
Other Frozen Dairy Products	1,235	1,019	1,207	-2.3	18.4
Mix for Frozen Products					
Ice Cream Mix	45,336	44,865	46,096	1.7	2.7
Ice Cream, Lowfat, Mix	19,318	20,518	21,356	10.5	4.1
Ice Cream, Nonfat, Mix	849	696	748	-11.9	7.5
Sherbet Mix	3,134	3,532	3,719	18.7	5.3
Yogurt Mix	3,475	3,954	3,945	13.5	-0.2

¹ Revised.

² Includes Cheddar, Colby, Monterey, and Jack.

³ Mostly used for processing into cream or lowfat cottage cheese.

⁴ Fat content 4 percent or more.

⁵ Fat content less than 4 percent.

⁶ Includes protein standardized and blends.

**Whey and Modified Whey Products: Production, Stocks,
and Prices, United States, April, 2006-2007**

Product	Apr 2006	Mar 2007 ¹	Apr 2007	Change From	
				Apr 2006	Mar 2007
Production					
	<i>1,000 Pounds</i>	<i>1,000 Pounds</i>	<i>1,000 Pounds</i>	<i>Percent</i>	<i>Percent</i>
Condensed Whey, Solids Content ²					
Sweet-Type, Human	9,291	8,646	9,553	2.8	10.5
Dry Whey Products					
Dry Whey, Human	91,803	94,734	93,379	1.7	-1.4
Dry Whey, Animal	3,859	3,979	3,842	-0.4	-3.4
Dry Whey, Total	95,662	98,713	97,221	1.6	-1.5
Reduced Lactose and Minerals					
Human Food	3,354	4,254	4,154	23.9	-2.4
Animal Feed	3,823	4,484	4,411	15.4	-1.6
Lactose, Human and Animal	63,402	64,975	63,083	-0.5	-2.9
Whey					
Protein Concentrate					
Human ³	33,042	31,314	29,855	-9.6	-4.7
Animal ³	4,483	3,724	3,626	-19.1	-2.6
Total ³	37,525	35,038	33,481	-10.8	-4.4
25.0-49.9 Percent ⁴	26,140	22,771	22,005	-15.8	-3.4
50.0-89.9 Percent ⁴	11,385	12,267	11,476	0.8	-6.4
Protein Isolates ⁵	2,206	3,085	3,134	42.1	1.6
Manufacturers' Stocks End-of-Month ⁶					
	<i>1,000 Pounds</i>	<i>1,000 Pounds</i>	<i>1,000 Pounds</i>	<i>Percent</i>	<i>Percent</i>
Dry Whey Products					
Dry Whey, Human	41,965	41,015	43,719	4.2	6.6
Dry Whey, Animal	1,433	1,091	1,616	12.8	48.1
Dry Whey, Total	43,398	42,106	45,335	4.5	7.7
Reduced Lactose and Minerals					
Human and Animal ⁷	5,138	5,091	6,003	16.8	17.9
Lactose, Human and Animal	40,549	42,328	40,118	-1.1	-5.2
Whey					
Protein Concentrate					
Human ³	28,255	23,354	23,663	-16.3	1.3
Animal ³	2,797	1,813	1,709	-38.9	-5.7
Total ³	31,052	25,167	25,372	-18.3	0.8
25.0-49.9 Percent ⁴	20,004	15,246	15,856	-20.7	4.0
50.0-89.9 Percent ⁴	11,048	9,921	9,516	-13.9	-4.1
Manufacturers' Selling Price ⁸					
	<i>Cents per Pound</i>	<i>Cents per Pound</i>	<i>Cents per Pound</i>	<i>Cents Change</i>	<i>Cents Change</i>
Dry Whey, Animal	24.5	65.1	67.9	43.4	2.8

¹ Revised.

² Final marketable product only. Does not include quantity used or shipped to another plant for further processing into dry whey or modified whey products. Does not include sweet-type, animal whey.

³ Whey Protein Concentrate, 25.0 to 89.9 percent.

⁴ Whey Protein Concentrate, Human and Animal.

⁵ Whey Protein Isolate, 90.0 percent or greater.

⁶ Stocks held by manufacturers at all points and in transit.

⁷ Reduced lactose and minerals stocks combined to avoid disclosure of individual operations.

⁸ Prices for bulk goods, f.o.b. plant. Average monthly prices reported by firms.

**Dairy Products: Production by Product and Month,
United States, 2006-2007 ¹**

Product and Month	By Month			Cumulative		
	2006	2007	Change From 2006	2006	2007	Change From 2006
	<i>1,000 Pounds</i>	<i>1,000 Pounds</i>	<i>Percent</i>	<i>1,000 Pounds</i>	<i>1,000 Pounds</i>	<i>Percent</i>
Total Cheese						
Jan	782,671	825,969	5.5	782,671	825,969	5.5
Feb	720,501	748,496	3.9	1,503,172	1,574,465	4.7
Mar	820,805	837,743	2.1	2,323,977	2,412,208	3.8
Apr	793,585	803,286	1.2	3,117,562	3,215,494	3.1
May	820,034			3,937,596		
Jun	796,104			4,733,700		
Jul	775,398			5,509,098		
Aug	795,133			6,304,231		
Sep	788,604			7,092,835		
Oct	812,276			7,905,111		
Nov	798,104			8,703,215		
Dec	831,116			9,534,331		
American Cheese						
Jan	325,636	343,095	5.4	325,636	343,095	5.4
Feb	299,035	305,474	2.2	624,671	648,569	3.8
Mar	336,095	338,377	0.7	960,766	986,946	2.7
Apr	337,267	326,740	-3.1	1,298,033	1,313,686	1.2
May	346,162			1,644,195		
Jun	331,375			1,975,570		
Jul	327,511			2,303,081		
Aug	318,071			2,621,152		
Sep	320,115			2,941,267		
Oct	320,925			3,262,192		
Nov	312,210			3,574,402		
Dec	338,204			3,912,606		
Cheddar Cheese						
Jan	265,842	274,082	3.1	265,842	274,082	3.1
Feb	241,532	248,714	3.0	507,374	522,796	3.0
Mar	267,799	270,069	0.8	775,173	792,865	2.3
Apr	271,722	258,210	-5.0	1,046,895	1,051,075	0.4
May	274,229			1,321,124		
Jun	263,380			1,584,504		
Jul	265,953			1,850,457		
Aug	250,375			2,100,832		
Sep	254,242			2,355,074		
Oct	249,425			2,604,499		
Nov	247,195			2,851,694		
Dec	273,060			3,124,754		

See footnote(s) at end of table.

--continued

**Dairy Products: Production by Product and Month,
United States, 2006-2007 ¹ (continued)**

Product and Month	By Month			Cumulative		
	2006	2007	Change From 2006	2006	2007	Change From 2006
	<i>1,000 Pounds</i>	<i>1,000 Pounds</i>	<i>Percent</i>	<i>1,000 Pounds</i>	<i>1,000 Pounds</i>	<i>Percent</i>
Italian Cheese						
Jan	330,843	353,589	6.9	330,843	353,589	6.9
Feb	306,391	319,585	4.3	637,234	673,174	5.6
Mar	348,058	361,191	3.8	985,292	1,034,365	5.0
Apr	331,202	344,972	4.2	1,316,494	1,379,337	4.8
May	337,437			1,653,931		
Jun	328,269			1,982,200		
Jul	320,586			2,302,786		
Aug	333,159			2,635,945		
Sep	327,134			2,963,079		
Oct	339,721			3,302,800		
Nov	330,142			3,632,942		
Dec	355,560			3,988,502		
Mozzarella						
Jan	259,949	279,383	7.5	259,949	279,383	7.5
Feb	240,457	256,343	6.6	500,406	535,726	7.1
Mar	273,367	287,089	5.0	773,773	822,815	6.3
Apr	262,340	276,553	5.4	1,036,113	1,099,368	6.1
May	265,835			1,301,948		
Jun	260,874			1,562,822		
Jul	255,341			1,818,163		
Aug	261,166			2,079,329		
Sep	258,736			2,338,065		
Oct	266,315			2,604,380		
Nov	259,149			2,863,529		
Dec	281,033			3,144,562		
Other Italian						
Jan	70,894	74,206	4.7	70,894	74,206	4.7
Feb	65,934	63,242	-4.1	136,828	137,448	0.5
Mar	74,691	74,102	-0.8	211,519	211,550	
Apr	68,862	68,419	-0.6	280,381	279,969	-0.1
May	71,602			351,983		
Jun	67,395			419,378		
Jul	65,245			484,623		
Aug	71,993			556,616		
Sep	68,398			625,014		
Oct	73,406			698,420		
Nov	70,993			769,413		
Dec	74,527			843,940		

See footnote(s) at end of table.

--continued

**Dairy Products: Production by Product and Month,
United States, 2006-2007 ¹ (continued)**

Product and Month	By Month			Cumulative		
	2006	2007	Change From 2006	2006	2007	Change From 2006
	<i>1,000 Pounds</i>	<i>1,000 Pounds</i>	<i>Percent</i>	<i>1,000 Pounds</i>	<i>1,000 Pounds</i>	<i>Percent</i>
Butter						
Jan	149,832	151,030	0.8	149,832	151,030	0.8
Feb	136,840	134,171	-2.0	286,672	285,201	-0.5
Mar	141,714	138,196	-2.5	428,386	423,397	-1.2
Apr	127,681	134,358	5.2	556,067	557,755	0.3
May	128,556			684,623		
Jun	101,110			785,733		
Jul	94,729			880,462		
Aug	88,880			969,342		
Sep	104,317			1,073,659		
Oct	119,133			1,192,792		
Nov	118,097			1,310,889		
Dec	137,593			1,448,482		
Nonfat Dry Milk, Human						
Jan	111,278	108,849	-2.2	111,278	108,849	-2.2
Feb	117,998	98,098	-16.9	229,276	206,947	-9.7
Mar	128,867	118,034	-8.4	358,143	324,981	-9.3
Apr	130,613	127,788	-2.2	488,756	452,769	-7.4
May	132,935			621,691		
Jun	116,846			738,537		
Jul	88,594			827,131		
Aug	73,193			900,324		
Sep	63,278			963,602		
Oct	69,989			1,033,591		
Nov	76,914			1,110,505		
Dec	113,567			1,224,072		
Skim Milk Powders ²						
Jan	30,883	10,812	-65.0	30,883	10,812	-65.0
Feb	27,087	11,032	-59.3	57,970	21,844	-62.3
Mar	21,580	10,195	-52.8	79,550	32,039	-59.7
Apr	14,014	15,568	11.1	93,564	47,607	-49.1
May	19,762			113,326		
Jun	23,871			137,197		
Jul	30,900			168,097		
Aug	25,638			193,735		
Sep	22,873			216,608		
Oct	28,967			245,575		
Nov	26,529			272,104		
Dec	16,970			289,074		

See footnote(s) at end of table.

--continued

**Dairy Products: Production by Product and Month,
United States, 2006-2007 ¹ (continued)**

Product and Month	By Month			Cumulative		
	2006	2007	Change From 2006	2006	2007	Change From 2006
	<i>1,000 Pounds</i>	<i>1,000 Pounds</i>	<i>Percent</i>	<i>1,000 Pounds</i>	<i>1,000 Pounds</i>	<i>Percent</i>
Dry Whey, Total ³						
Jan	88,391	96,145	8.8	88,391	96,145	8.8
Feb	89,695	90,232	0.6	178,086	186,377	4.7
Mar	100,953	98,713	-2.2	279,039	285,090	2.2
Apr	95,662	97,221	1.6	374,701	382,311	2.0
May	97,295			471,996		
Jun	89,701			561,697		
Jul	95,226			656,923		
Aug	91,547			748,470		
Sep	86,271			834,741		
Oct	87,434			922,175		
Nov	85,865			1,008,040		
Dec	92,306			1,100,346		
Lactose, Human and Animal						
Jan	64,539	65,064	0.8	64,539	65,064	0.8
Feb	56,311	59,671	6.0	120,850	124,735	3.2
Mar	62,165	64,975	4.5	183,015	189,710	3.7
Apr	63,402	63,083	-0.5	246,417	252,793	2.6
May	66,057			312,474		
Jun	60,027			372,501		
Jul	60,333			432,834		
Aug	64,225			497,059		
Sep	58,964			556,023		
Oct	62,296			618,319		
Nov	60,505			678,824		
Dec	59,832			738,656		
Whey Protein Concentrate, Total						
Jan	37,162	33,055	-11.1	37,162	33,055	-11.1
Feb	34,436	29,432	-14.5	71,598	62,487	-12.7
Mar	37,766	35,038	-7.2	109,364	97,525	-10.8
Apr	37,525	33,481	-10.8	146,889	131,006	-10.8
May	37,373			184,262		
Jun	36,190			220,452		
Jul	35,704			256,156		
Aug	35,024			291,180		
Sep	34,581			325,761		
Oct	34,581			360,342		
Nov	33,116			393,458		
Dec	34,266			427,724		

See footnote(s) at end of table.

--continued

**Dairy Products: Production by Product and Month,
United States, 2006-2007 ¹ (continued)**

Product and Month	By Month			Cumulative		
	2006	2007	Change From 2006	2006	2007	Change From 2006
	<i>1,000 Pounds</i>	<i>1,000 Pounds</i>	<i>Percent</i>	<i>1,000 Pounds</i>	<i>1,000 Pounds</i>	<i>Percent</i>
Cream Cottage Cheese						
Jan	29,943	29,227	-2.4	29,943	29,227	-2.4
Feb	29,095	28,326	-2.6	59,038	57,553	-2.5
Mar	32,376	32,027	-1.1	91,414	89,580	-2.0
Apr	28,670	30,519	6.4	120,084	120,099	
May	32,367			152,451		
Jun	32,315			184,766		
Jul	29,952			214,718		
Aug	35,692			250,410		
Sep	30,412			280,822		
Oct	30,161			310,983		
Nov	29,538			340,521		
Dec	26,957			367,478		
Lowfat Cottage Cheese						
Jan	34,117	34,556	1.3	34,117	34,556	1.3
Feb	33,186	32,281	-2.7	67,303	66,837	-0.7
Mar	34,771	37,770	8.6	102,074	104,607	2.5
Apr	32,504	34,838	7.2	134,578	139,445	3.6
May	35,874			170,452		
Jun	34,777			205,229		
Jul	34,037			239,266		
Aug	38,861			278,127		
Sep	34,458			312,585		
Oct	33,678			346,263		
Nov	31,775			378,038		
Dec	29,807			407,845		
Sour Cream						
Jan	85,732	90,856	6.0	85,732	90,856	6.0
Feb	80,267	80,054	-0.3	165,999	170,910	3.0
Mar	92,880	90,687	-2.4	258,879	261,597	1.0
Apr	83,097	88,208	6.2	341,976	349,805	2.3
May	94,154			436,130		
Jun	92,565			528,695		
Jul	87,139			615,834		
Aug	99,020			714,854		
Sep	87,555			802,409		
Oct	101,849			904,258		
Nov	113,822			1,018,080		
Dec	103,385			1,121,465		

See footnote(s) at end of table.

--continued

**Dairy Products: Production by Product and Month,
United States, 2006-2007 ¹ (continued)**

Product and Month	By Month			Cumulative		
	2006	2007	Change From 2006	2006	2007	Change From 2006
	<i>1,000 Gallons</i>	<i>1,000 Gallons</i>	<i>Percent</i>	<i>1,000 Gallons</i>	<i>1,000 Gallons</i>	<i>Percent</i>
Ice Cream, Regular, Hard						
Jan	65,338	64,840	-0.8	65,338	64,840	-0.8
Feb	65,937	65,530	-0.6	131,275	130,370	-0.7
Mar	82,123	78,818	-4.0	213,398	209,188	-2.0
Apr	79,616	79,446	-0.2	293,014	288,634	-1.5
May	84,890			377,904		
Jun	91,954			469,858		
Jul	88,628			558,486		
Aug	89,305			647,791		
Sep	74,979			722,770		
Oct	66,486			789,256		
Nov	58,922			848,178		
Dec	51,144			899,322		
Ice Cream, Lowfat, Total						
Jan	24,286	26,726	10.0	24,286	26,726	10.0
Feb	24,566	28,053	14.2	48,852	54,779	12.1
Mar	31,845	35,734	12.2	80,697	90,513	12.2
Apr	32,333	37,214	15.1	113,030	127,727	13.0
May	36,336			149,366		
Jun	42,339			191,705		
Jul	37,770			229,475		
Aug	36,448			265,923		
Sep	30,887			296,810		
Oct	28,645			325,455		
Nov	23,224			348,679		
Dec	23,521			372,200		
Sherbet, Hard						
Jan	3,944	3,311	-16.0	3,944	3,311	-16.0
Feb	4,135	3,854	-6.8	8,079	7,165	-11.3
Mar	4,634	4,771	3.0	12,713	11,936	-6.1
Apr	4,375	5,316	21.5	17,088	17,252	1.0
May	4,662			21,750		
Jun	4,984			26,734		
Jul	4,886			31,620		
Aug	4,830			36,450		
Sep	3,795			40,245		
Oct	3,642			43,887		
Nov	3,079			46,966		
Dec	2,808			49,774		

See footnote(s) at end of table.

--continued

**Dairy Products: Production by Product and Month,
United States, 2006-2007 ¹ (continued)**

Product and Month	By Month			Cumulative		
	2006	2007	Change From 2006	2006	2007	Change From 2006
	<i>1,000 Pounds</i>	<i>1,000 Pounds</i>	<i>Percent</i>	<i>1,000 Pounds</i>	<i>1,000 Pounds</i>	<i>Percent</i>
Yogurt, Plain & Flavored						
Jan	269,591	286,256	6.2	269,591	286,256	6.2
Feb	260,430	285,283	9.5	530,021	571,539	7.8
Mar	307,110	313,746	2.2	837,131	885,285	5.8
Apr	270,181	304,364	12.7	1,107,312	1,189,649	7.4
May	282,100			1,389,412		
Jun	290,529			1,679,941		
Jul	266,544			1,946,485		
Aug	294,044			2,240,529		
Sep	288,769			2,529,298		
Oct	273,415			2,802,713		
Nov	238,194			3,040,907		
Dec	253,680			3,294,587		
	<i>1,000 Gallons</i>	<i>1,000 Gallons</i>	<i>Percent</i>	<i>1,000 Gallons</i>	<i>1,000 Gallons</i>	<i>Percent</i>
Yogurt, Frozen						
Jan	4,563	4,589	0.6	4,563	4,589	0.6
Feb	4,746	4,151	-12.5	9,309	8,740	-6.1
Mar	6,126	6,524	6.5	15,435	15,264	-1.1
Apr	5,897	6,509	10.4	21,332	21,773	2.1
May	6,636			27,968		
Jun	6,697			34,665		
Jul	6,368			41,033		
Aug	6,877			47,910		
Sep	5,756			53,666		
Oct	5,296			58,962		
Nov	4,408			63,370		
Dec	4,080			67,450		

¹ March 2007 data revised.

² Includes protein standardized and blends.

³ Excludes all modified dry whey products.

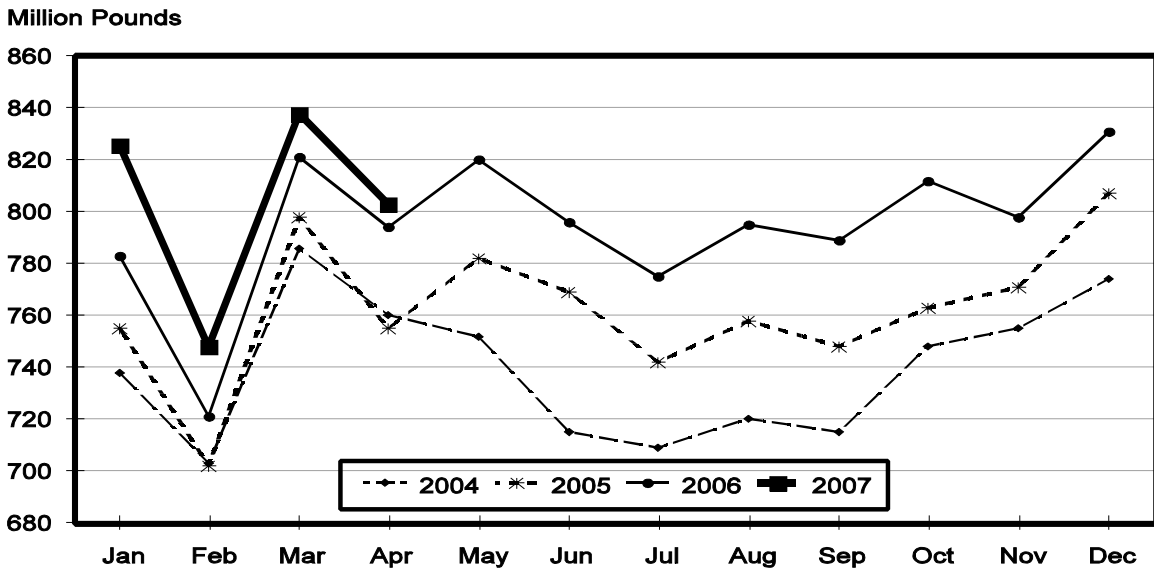
Total Cheese, Excluding Cottage Cheese: Production by State and United States, April 2006-2007

State	Apr 2006	Mar ¹ 2007	Apr 2007	Change From	
				Apr 2006	Mar 2007
	<i>1,000 Pounds</i>	<i>1,000 Pounds</i>	<i>1,000 Pounds</i>	<i>Percent</i>	<i>Percent</i>
CA	187,640	202,369	194,060	3.4	-4.1
ID	66,443	67,262	66,553	0.2	-1.1
IL	6,946	6,683	6,147	-11.5	-8.0
IA	13,142	12,333	11,693	-11.0	-5.2
MN	54,251	53,085	52,063	-4.0	-1.9
NM	46,885	54,495	50,891	8.5	-6.6
NY	54,044	65,672	57,358	6.1	-12.7
OH	16,625	17,010	16,026	-3.6	-5.8
PA	32,717	34,042	32,078	-2.0	-5.8
SD	15,264	15,512	15,104	-1.0	-2.6
UT	7,948	7,509	7,905	-0.5	5.3
WI	200,781	208,783	201,253	0.2	-3.6
Oth Sts ²	90,899	92,988	92,155	1.4	-0.9
US	793,585	837,743	803,286	1.2	-4.1
Atlantic	105,581	118,968	108,176	2.5	-9.1
Central	337,428	344,563	333,569	-1.1	-3.2
West	350,576	374,212	361,541	3.1	-3.4

¹ Revised.

² States not shown when fewer than 3 plants reported or individual plant operations could be disclosed. Percent change shown only when comparable States are included in the calculation.

Total Cheese Production United States



American Cheese: Production by State and United States, April 2006-2007

State	Apr 2006	Mar ¹ 2007	Apr 2007	Change From	
				Apr 2006	Mar 2007
	<i>1,000 Pounds</i>	<i>1,000 Pounds</i>	<i>1,000 Pounds</i>	<i>Percent</i>	<i>Percent</i>
CA	71,457	71,350	68,932	-3.5	-3.4
ID	48,585	53,126	52,543	8.1	-1.1
MN	50,185	49,516	48,199	-4.0	-2.7
OH	3,393	2,599	2,123	-37.4	-18.3
OR	9,546	9,544	8,571	-10.2	-10.2
WI	70,466	66,772	63,900	-9.3	-4.3
Oth Sts ²	83,635	85,470	82,472	-1.4	-3.5
US	337,267	338,377	326,740	-3.1	-3.4
Atlantic	12,688	12,151	13,455	6.0	10.7
Central	149,629	141,757	135,720	-9.3	-4.3
West	174,950	184,469	177,565	1.5	-3.7

¹ Revised.

² States not shown when fewer than 3 plants reported or individual plant operations could be disclosed. Percent change shown only when comparable States are included in the calculation.

Cheddar Cheese: Production by State and United States, April 2006-2007

State	Apr 2006	Mar ¹ 2007	Apr 2007	Change From	
				Apr 2006	Mar 2007
	<i>1,000 Pounds</i>	<i>1,000 Pounds</i>	<i>1,000 Pounds</i>	<i>Percent</i>	<i>Percent</i>
CA	43,733	41,453	39,753	-9.1	-4.1
ID	44,689	49,204	49,136	10.0	-0.1
MN	46,201	45,319	44,590	-3.5	-1.6
OH	2,270	1,842	1,849	-18.5	0.4
WI	57,165	55,583	51,300	-10.3	-7.7
Oth Sts ²	77,664	76,668	71,582	-7.8	-6.6
US	271,722	270,069	258,210	-5.0	-4.4
Atlantic	12,307	12,073	12,766	3.7	5.7
Central	125,635	119,920	113,147	-9.9	-5.6
West	133,780	138,076	132,297	-1.1	-4.2

¹ Revised.

² States not shown when fewer than 3 plants reported or individual plant operations could be disclosed. Percent change shown only when comparable States are included in the calculation.

**Italian Cheese, Total: Production by State and
United States, April 2006-2007**

State	Apr 2006	Mar ¹ 2007	Apr 2007	Change From	
				Apr 2006	Mar 2007
	<i>1,000 Pounds</i>	<i>1,000 Pounds</i>	<i>1,000 Pounds</i>	<i>Percent</i>	<i>Percent</i>
CA	99,939	109,998	104,662	4.7	-4.9
ID	12,603	12,539	12,367	-1.9	-1.4
NY	30,802	35,930	32,444	5.3	-9.7
PA	22,126	21,863	21,932	-0.9	0.3
SD	7,768	7,782	7,496	-3.5	-3.7
WI	94,317	103,474	98,891	4.8	-4.4
Oth Sts ²	63,647	69,605	67,180	5.6	-3.5
US	331,202	361,191	344,972	4.2	-4.5
Atlantic	61,952	67,222	62,872	1.5	-6.5
Central	124,001	135,342	129,699	4.6	-4.2
West	145,249	158,627	152,401	4.9	-3.9

¹ Revised.

² States not shown when fewer than 3 plants reported or individual plant operations could be disclosed. Percent change shown only when comparable States are included in the calculation.

Mozzarella Cheese: Production by State and United States, April 2006-2007

State	Apr 2006	Mar ¹ 2007	Apr 2007	Change From	
				Apr 2006	Mar 2007
	<i>1,000 Pounds</i>	<i>1,000 Pounds</i>	<i>1,000 Pounds</i>	<i>Percent</i>	<i>Percent</i>
CA	88,918	98,826	94,128	5.9	-4.8
ID	11,157	10,914	10,681	-4.3	-2.1
NY	15,826	17,822	16,883	6.7	-5.3
PA	19,206	18,457	18,424	-4.1	-0.2
WI	68,063	75,574	72,900	7.1	-3.5
Oth Sts ²	59,170	65,496	63,537	7.4	-3.0
US	262,340	287,089	276,553	5.4	-3.7
Atlantic	40,961	42,509	41,034	0.2	-3.5
Central	89,713	99,664	96,410	7.5	-3.3
West	131,666	144,916	139,109	5.7	-4.0

¹ Revised.

² States not shown when fewer than 3 plants reported or individual plant operations could be disclosed. Percent change shown only when comparable States are included in the calculation.

Butter: Production by State and United States, April 2006-2007

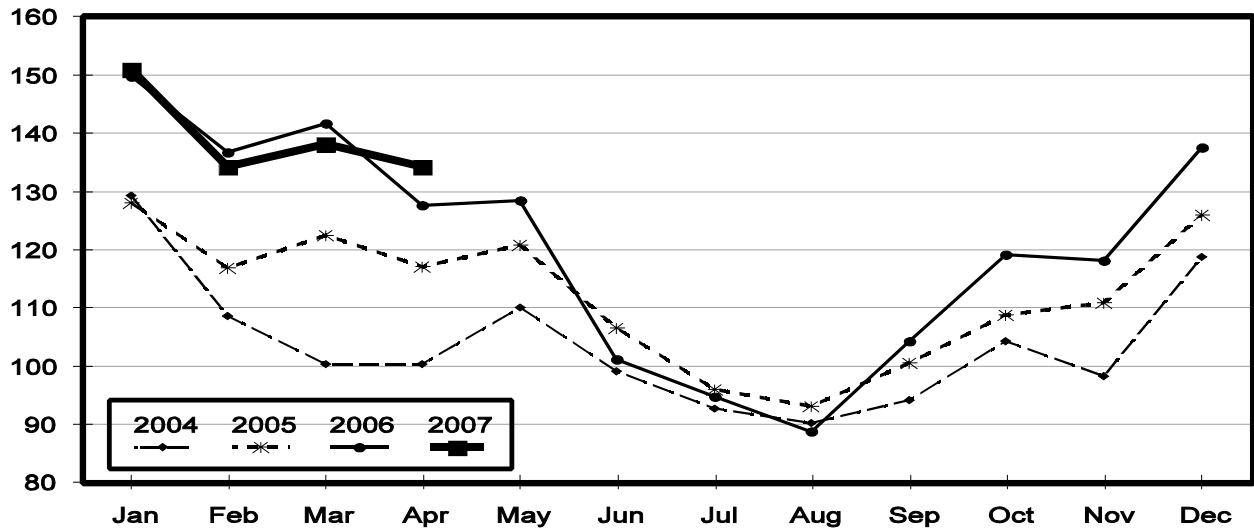
State	Apr 2006	Mar ¹ 2007	Apr 2007	Change From	
				Apr 2006	Mar 2007
	<i>1,000 Pounds</i>	<i>1,000 Pounds</i>	<i>1,000 Pounds</i>	<i>Percent</i>	<i>Percent</i>
CA	39,471	44,314	41,215	4.4	-7.0
NY	1,435	1,886	1,354	-5.6	-28.2
PA	7,163	7,180	7,452	4.0	3.8
WI	29,484	31,260	31,900	8.2	2.0
Oth Sts ²	50,128	53,556	52,437	4.6	-2.1
US	127,681	138,196	134,358	5.2	-2.8
Atlantic	14,422	13,989	14,159	-1.8	1.2
Central	54,534	59,368	58,993	8.2	-0.6
West	58,725	64,839	61,206	4.2	-5.6

¹ Revised.

² States not shown when fewer than 3 plants reported or individual plant operations could be disclosed. Percent change shown only when comparable States are included in the calculation.

Total Butter Production United States

Million Pounds



**Nonfat Dry Milk, Human: Production by State
and United States, April 2006-2007**

State	Apr 2006	Mar ¹ 2007	Apr 2007	Change From	
				Apr 2006	Mar 2007
	<i>1,000 Pounds</i>	<i>1,000 Pounds</i>	<i>1,000 Pounds</i>	<i>Percent</i>	<i>Percent</i>
CA	58,823	64,214	63,307	7.6	-1.4
Oth Sts ²	71,790	53,820	64,481	-10.2	19.8
US	130,613	118,034	127,788	-2.2	8.3
Atlantic	23,997	13,656	17,040	-29.0	24.8
Central	16,527	13,592	16,630	0.6	22.4
West	90,089	90,786	94,118	4.5	3.7

¹ Revised.

² States not shown when fewer than 3 plants reported or individual plant operations could be disclosed. Percent change shown only when comparable States are included in the calculation.

**Dry Whey, Human: Production by State
and United States, April 2006-2007**

State	Apr 2006	Mar ¹ 2007	Apr 2007	Change From	
				Apr 2006	Mar 2007
	<i>1,000 Pounds</i>	<i>1,000 Pounds</i>	<i>1,000 Pounds</i>	<i>Percent</i>	<i>Percent</i>
CA	8,263	7,596	7,035	-14.9	-7.4
MN	4,253	5,033	4,767	12.1	-5.3
NY	11,041	11,456	11,278	2.1	-1.6
WI	26,500	27,270	26,500		-2.8
Oth Sts ²	41,746	43,379	43,799	4.9	1.0
US	91,803	94,734	93,379	1.7	-1.4
Atlantic	20,618	20,806	21,043	2.1	1.1
Central	41,808	43,433	42,586	1.9	-2.0
West	29,377	30,495	29,750	1.3	-2.4

¹ Revised.

² States not shown when fewer than 3 plants reported or individual plant operations could be disclosed. Percent change shown only when comparable States are included in the calculation.

Ice Cream, Hard: Production by State and United States, April 2006-2007

State	Apr 2006	Mar ¹ 2007	Apr 2007	Change From	
				Apr 2006	Mar 2007
	<i>1,000 Gallons</i>	<i>1,000 Gallons</i>	<i>1,000 Gallons</i>	<i>Percent</i>	<i>Percent</i>
CA	11,333	12,183	11,667	2.9	-4.2
FL	1,808	1,700	1,500	-17.0	-11.8
IN	7,118	6,301	6,286	-11.7	-0.2
MA	5,661	2,628	3,693	-34.8	40.5
MN	3,757	3,585	3,494	-7.0	-2.5
MO	3,025	2,450	2,894	-4.3	18.1
NY	2,458	2,375	2,685	9.2	13.1
NC	1,584	1,349	1,079	-31.9	-20.0
OH	1,704	2,073	1,402	-17.7	-32.4
OR	954	990	1,059	11.0	7.0
PA	2,770	2,523	3,051	10.1	20.9
TN	1,465	1,621	1,447	-1.2	-10.7
TX	5,559	5,864	5,385	-3.1	-8.2
UT	1,928	2,212	2,752	42.7	24.4
Oth Sts ²	28,492	30,964	31,052	9.0	0.3
US	79,616	78,818	79,446	-0.2	0.8
N Atl	14,870	10,834	13,209	-11.2	21.9
S Atl	7,730	9,149	7,848	1.5	-14.2
E N Cen	14,124	14,896	14,010	-0.8	-5.9
W N Cen	13,338	13,596	14,705	10.2	8.2
S Cen	11,215	11,333	10,778	-3.9	-4.9
West	18,339	19,010	18,896	3.0	-0.6

¹ Revised.

² States not shown when fewer than 3 plants reported or individual plant operations could be disclosed. Percent change shown only when comparable States are included in the calculation.

**Canned Milk and Dry Milk Products: Manufacturers' Shipments,
and Stocks, April, 2006-2007**

Product	Apr 2006	Mar 2007 ¹	Apr 2007	Change From	
				Apr 2006	Mar 2007
	Manufacturers' Shipments²				
	<i>1,000 Pounds</i>	<i>1,000 Pounds</i>	<i>1,000 Pounds</i>	<i>Percent</i>	<i>Percent</i>
Nonfat Dry Milk, Human	92,813	112,972	110,985	19.6	-1.8
	Manufacturers' Stocks End-of-Month³				
	<i>1,000 Pounds</i>	<i>1,000 Pounds</i>	<i>1,000 Pounds</i>	<i>Percent</i>	<i>Percent</i>
Canned Evaporated and Condensed Whole Milk	72,989	52,245	59,547	-18.4	14.0
Nonfat Dry Milk, Human	155,758	77,764	99,393	-36.2	27.8
Dry Buttermilk, Total	16,106	5,819	6,896	-57.2	18.5

¹ Revised.

² For dry products, shipments of bulk goods only.

³ Stocks held by manufacturers at all points and in transit.

Procedures and Reliability: Estimates included in this report are based on data provided each month by manufacturers of these products. In 32 States, the State Departments of Agriculture assist in collection of data, which eliminates duplicate reporting and reduces respondent burden. Data are collected by mail, personal and telephone interviews following the close of each month. There were 1,080 manufacturers that made one or more products in 2006. Each month, reports are generally received from all dairy plants in States with small numbers of plants. In States with large numbers of plants, survey procedures are designed to obtain monthly reports from all large plants and from a sample of small plants. Monthly estimates are based upon returns from about 70 percent of the plants which account for 70 to 90 percent of the total production of major dairy products.

Revision Policy: Monthly estimates are subject to revision the month following the preliminary estimates. Annual estimates are published in the "**Dairy Products**" report published each April which includes any revisions made to current and previous year. An attempt is made to get information from all plants for preparing these estimates

Information Contacts

Listed below are the commodity specialists in the Livestock Branch of the National Agricultural Statistics Service to contact for additional information.

- Dan Kerestes, Chief, Livestock Branch (202) 720-3570

- William Weaver, Head, Livestock Section (202) 720-3570
 - Bruce Boess - Hogs and Pigs (202) 720-3106
 - Shawn Clark - Dairy Products (202) 690-3236
 - Jason Hardegree - Milk Production and Milk Cows (202) 720-3278
 - Benita Hodge - Livestock Slaughter (515) 284-4340
 - Scott Hollis - Sheep & Lambs, Goats (202) 720-4751
 - Mike Miller - Cattle, Cattle on Feed (202) 720-3040
 - Charmaine Wilson - Dairy Products Prices (202) 690-2168

ACCESS TO REPORTS!!

For your convenience, there are several ways to obtain NASS reports, data products, and services:

INTERNET ACCESS

All NASS reports are available free of charge on the worldwide Internet. For access, connect to the Internet and go to the NASS Home Page at: www.nass.usda.gov.

E-MAIL SUBSCRIPTION

All NASS reports are available by subscription free of charge direct to your e-mail address. Starting with the NASS Home Page at www.nass.usda.gov, under the right navigation, *Receive reports by Email*, click on **National** or **State**. Follow the instructions on the screen.

PRINTED REPORTS OR DATA PRODUCTS

CALL OUR TOLL-FREE ORDER DESK: 800-999-6779 (U.S. and Canada)
Other areas, please call 703-605-6220 FAX: 703-605-6900
(Visa, MasterCard, check, or money order acceptable for payment.)

ASSISTANCE

For **assistance** with general agricultural statistics or further information about NASS or its products or services, contact the **Agricultural Statistics Hotline** at **800-727-9540**, 7:30 a.m. to 4:00 p.m. ET, or e-mail: nass@nass.usda.gov.

The U.S. Department of Agriculture (USDA) prohibits discrimination in all its programs and activities on the basis of race, color, national origin, age, disability, and where applicable, sex, marital status, familial status, parental status, religion, sexual orientation, genetic information, political beliefs, reprisal, or because all or a part of an individual's income is derived from any public assistance program. (Not all prohibited bases apply to all programs.) Persons with disabilities who require alternative means for communication of program information (Braille, large print, audiotape, etc.) should contact USDA's TARGET Center at (202) 720-2600 (voice and TDD).

To file a complaint of discrimination, write to USDA, Director, Office of Civil Rights, 1400 Independence Avenue, S.W., Washington, D.C. 20250-9410, or call (800) 795-3272 (voice) or (202) 720-6382 (TDD). USDA is an equal opportunity provider and employer.