



NASS

FACT FINDERS FOR AGRICULTURE
UNITED STATES DEPARTMENT OF AGRICULTURE

Washington, D.C.

Dairy Products

Released July 3, 2007, by the National Agricultural Statistics Service (NASS), Agricultural Statistics Board, U.S. Department of Agriculture. For information on *Dairy Products* call Shawn Clark at (202) 690-3236, office hours 7:30 a.m. to 4:00 p.m. ET.

May 2007 Highlights

Total cheese output (excluding cottage cheese) was 820 million pounds, slightly below May 2006 but 2.2 percent above April 2007.

Italian type cheese production totaled 349 million pounds, 3.3 percent above May 2006 and 1.1 percent above April 2007.

American type cheese production totaled 332 million pounds, 4.2 percent below May 2006 but 1.8 percent above April 2007.

Butter production was 125 million pounds, 2.8 percent below May 2006 and 7.0 percent below April 2007.

Dry Milk Powders: (comparisons with May 2006)

Nonfat dry milk, human --- 116 million pounds, down 12.9 percent.

Skim milk powders --- 13.0 million pounds, down 34.3 percent.

Whey products: (comparisons with May 2006)

Dry whey, total --- 99.4 million pounds, up 2.2 percent.

Lactose, human and animal --- 67.1 million pounds, up 1.6 percent.

Whey protein concentrate, total --- 33.5 million pounds, down 10.3 percent.

Frozen products: (comparisons with May 2006)

Ice cream, Regular (hard) --- 85.2 million gallons, up 0.4 percent.

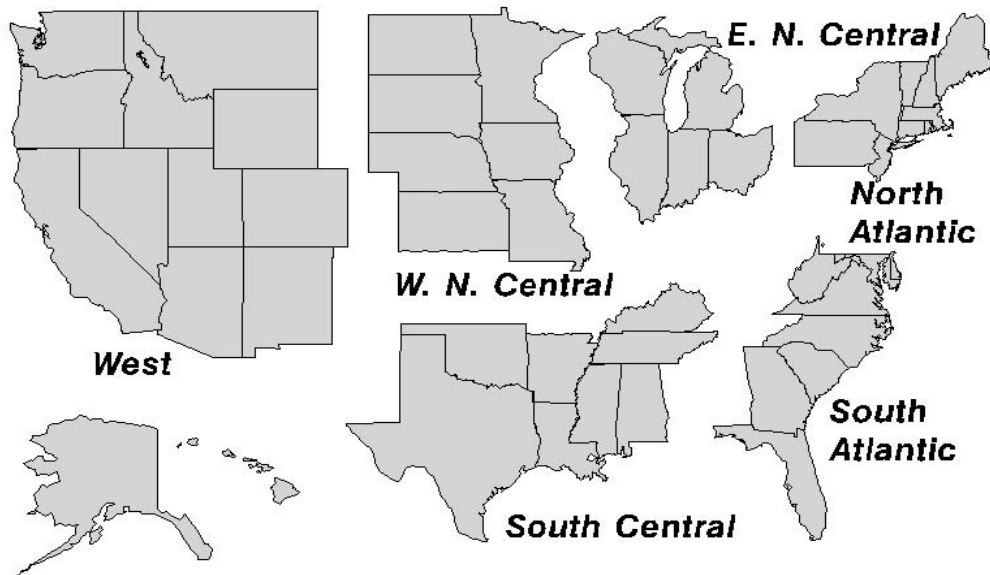
Ice cream, Lowfat (total) --- 42.1 million gallons, up 16.0 percent.

Sherbet (hard) --- 5.38 million gallons, up 15.5 percent.

Frozen Yogurt (total) --- 6.33 million gallons, down 4.6 percent.

U. S. Geographic Regions Dairy Products

If we are not able to publish a region for confidentiality reasons, it will be combined with other regions when possible. For example, if North Atlantic can not be published, then it will be combined with South Atlantic to publish Atlantic. The West North Central and East North Central will be combined, if necessary, to form North Central. In the event that neither could be published, they may be combined with South Central to publish Central. Some tables will have only limited regions shown, therefore the regions may not add to the United States total.



Contents

Page

Dairy Products: Production by Product, United States	1
Whey and Modified Whey Products: Production, Stocks, and Prices, United States	2
Dairy Products: Production by Product and Month, United States	3
Select Commodities by State and United States	10
Canned Milk and Dry Milk Products: Manufacturer's Shipments, Stocks, and Selling Prices ...	15
Procedures and Reliability	16
Information Contacts	16

**Dairy Products: Production by Product,
United States, May, 2006-2007**

Product	May 2006	Apr 2007 ¹	May 2007	Change From	
				May 2006	Apr 2007
	<i>1,000 Pounds</i>	<i>1,000 Pounds</i>	<i>1,000 Pounds</i>	<i>Percent</i>	<i>Percent</i>
Butter	128,556	134,355	125,008	-2.8	-7.0
Cheese					
American Types ²	346,162	325,744	331,551	-4.2	1.8
Cheddar	274,229	257,133	265,459	-3.2	3.2
Swiss	27,719	26,389	27,935	0.8	5.9
Brick and Muenster	9,207	8,816	9,059	-1.6	2.8
Cream and Neufchatel	58,972	55,211	61,348	4.0	11.1
Hispanic	14,984	15,205	16,054	7.1	5.6
Mozzarella	265,835	276,496	278,485	4.8	0.7
Other Italian Types	71,602	68,315	70,146	-2.0	2.7
Total Italian Types	337,437	344,811	348,631	3.3	1.1
All Other Types	25,553	26,304	25,251	-1.2	-4.0
Total	820,034	802,480	819,829		2.2
Cottage Cheese, Curd ³	39,908	39,460	41,211	3.3	4.4
Cottage Cheese, Cream ⁴	32,367	30,465	32,213	-0.5	5.7
Cottage Cheese, Lowfat ⁵	35,874	34,781	37,606	4.8	8.1
Canned Evaporated and					
Condensed Whole Milk	45,611	43,869	45,715	0.2	4.2
Dry Whole Milk	2,559	2,388	3,068	19.9	28.5
Nonfat Dry Milk, Human	132,935	123,068	115,729	-12.9	-6.0
Skim Milk Powders ⁶	19,762	15,568	12,987	-34.3	-16.6
Dry Skim Milk, Animal	595	442	455	-23.5	2.9
Dry Buttermilk	5,886	6,898	6,720	14.2	-2.6
Sour Cream	94,154	88,343	91,798	-2.5	3.9
Yogurt, Plain & Flavored	282,100	304,504	297,198	5.4	-2.4
	<i>1,000 Gallons</i>	<i>1,000 Gallons</i>	<i>1,000 Gallons</i>	<i>Percent</i>	<i>Percent</i>
Frozen Products					
Ice Cream, Regular, Hard	84,890	80,631	85,245	0.4	5.7
Ice Cream, Lowfat, Hard	11,587	12,795	13,652	17.8	6.7
Ice Cream, Lowfat, Soft	24,749	24,286	28,490	15.1	17.3
Ice Cream, Lowfat, Total	36,336	37,081	42,142	16.0	13.6
Ice Cream, Nonfat, Hard	1,516	1,231	1,146	-24.4	-6.9
Sherbet, Hard	4,662	5,368	5,384	15.5	0.3
Water and Juice Ices	6,243	5,649	6,459	3.5	14.3
Frozen Yogurt, Total	6,636	6,494	6,331	-4.6	-2.5
Regular & Lowfat, Hard	1,346	1,876	1,704	26.6	-9.2
Nonfat, Hard	941	769	700	-25.6	-9.0
Other Frozen Dairy					
Products	1,118	1,215	1,129	1.0	-7.1
Mix for Frozen Products					
Ice Cream Mix	48,268	45,339	47,810	-0.9	5.5
Ice Cream, Lowfat, Mix	21,913	21,277	24,245	10.6	13.9
Ice Cream, Nonfat, Mix	954	769	741	-22.3	-3.6
Sherbet Mix	3,382	3,680	3,760	11.2	2.2
Yogurt Mix	4,038	3,936	3,837	-5.0	-2.5

¹ Revised.

² Includes Cheddar, Colby, Monterey, and Jack.

³ Mostly used for processing into cream or lowfat cottage cheese.

⁴ Fat content 4 percent or more.

⁵ Fat content less than 4 percent.

⁶ Includes protein standardized and blends.

**Whey and Modified Whey Products: Production, Stocks,
and Prices, United States, May, 2006-2007**

Product	May 2006	Apr 2007 ¹	May 2007	Change From	
				May 2006	Apr 2007
Production					
	<i>1,000 Pounds</i>	<i>1,000 Pounds</i>	<i>1,000 Pounds</i>	<i>Percent</i>	<i>Percent</i>
Condensed Whey, Solids Content ²					
Sweet-Type, Human	8,582	9,553	10,011	16.7	4.8
Dry Whey Products					
Dry Whey, Human	91,851	93,008	94,506	2.9	1.6
Dry Whey, Animal	5,444	3,810	4,940	-9.3	29.7
Dry Whey, Total	97,295	96,818	99,446	2.2	2.7
Reduced Lactose and Minerals					
Human Food	3,822	4,154	4,395	15.0	5.8
Animal Feed	4,103	4,411	4,415	7.6	0.1
Lactose, Human and Animal	66,057	63,083	67,118	1.6	6.4
Whey					
Protein Concentrate					
Human ³	33,704	29,562	30,078	-10.8	1.7
Animal ³	3,669	3,626	3,455	-5.8	-4.7
Total ³	37,373	33,188	33,533	-10.3	1.0
25.0-49.9 Percent ⁴	26,292	21,707	22,491	-14.5	3.6
50.0-89.9 Percent ⁴	11,081	11,481	11,042	-0.4	-3.8
Protein Isolates ⁵	2,312	3,083	3,090	33.7	0.2
Manufacturers' Stocks End-of-Month ⁶					
	<i>1,000 Pounds</i>	<i>1,000 Pounds</i>	<i>1,000 Pounds</i>	<i>Percent</i>	<i>Percent</i>
Dry Whey Products					
Dry Whey, Human	45,460	46,159	44,135	-2.9	-4.4
Dry Whey, Animal	2,988	1,591	2,578	-13.7	62.0
Dry Whey, Total	48,448	47,750	46,713	-3.6	-2.2
Reduced Lactose and Minerals					
Human and Animal ⁷	5,508	6,003	7,502	36.2	25.0
Lactose, Human and Animal	39,856	40,118	42,451	6.5	5.8
Whey					
Protein Concentrate					
Human ³	28,769	23,663	23,732	-17.5	0.3
Animal ³	2,337	1,709	2,011	-13.9	17.7
Total ³	31,106	25,372	25,743	-17.2	1.5
25.0-49.9 Percent ⁴	20,538	15,856	15,673	-23.7	-1.2
50.0-89.9 Percent ⁴	10,568	9,516	10,070	-4.7	5.8
Manufacturers' Selling Price ⁸					
	<i>Cents per Pound</i>	<i>Cents per Pound</i>	<i>Cents per Pound</i>	<i>Cents Change</i>	<i>Cents Change</i>
Dry Whey, Animal	22.2	67.9	63.6	41.4	-4.3

¹ Revised.

² Final marketable product only. Does not include quantity used or shipped to another plant for further processing into dry whey or modified whey products. Does not include sweet-type, animal whey.

³ Whey Protein Concentrate, 25.0 to 89.9 percent.

⁴ Whey Protein Concentrate, Human and Animal.

⁵ Whey Protein Isolate, 90.0 percent or greater.

⁶ Stocks held by manufacturers at all points and in transit.

⁷ Reduced lactose and minerals stocks combined to avoid disclosure of individual operations.

⁸ Prices for bulk goods, f.o.b. plant. Average monthly prices reported by firms.

**Dairy Products: Production by Product and Month,
United States, 2006-2007 ¹**

Product and Month	By Month			Cumulative		
	2006	2007	Change From 2006	2006	2007	Change From 2006
	<i>1,000 Pounds</i>	<i>1,000 Pounds</i>	<i>Percent</i>	<i>1,000 Pounds</i>	<i>1,000 Pounds</i>	<i>Percent</i>
Total Cheese						
Jan	782,671	825,969	5.5	782,671	825,969	5.5
Feb	720,501	748,496	3.9	1,503,172	1,574,465	4.7
Mar	820,805	837,743	2.1	2,323,977	2,412,208	3.8
Apr	793,585	802,480	1.1	3,117,562	3,214,688	3.1
May	820,034	819,829		3,937,596	4,034,517	2.5
Jun	796,104			4,733,700		
Jul	775,398			5,509,098		
Aug	795,133			6,304,231		
Sep	788,604			7,092,835		
Oct	812,276			7,905,111		
Nov	798,104			8,703,215		
Dec	831,116			9,534,331		
American Cheese						
Jan	325,636	343,095	5.4	325,636	343,095	5.4
Feb	299,035	305,474	2.2	624,671	648,569	3.8
Mar	336,095	338,377	0.7	960,766	986,946	2.7
Apr	337,267	325,744	-3.4	1,298,033	1,312,690	1.1
May	346,162	331,551	-4.2	1,644,195	1,644,241	
Jun	331,375			1,975,570		
Jul	327,511			2,303,081		
Aug	318,071			2,621,152		
Sep	320,115			2,941,267		
Oct	320,925			3,262,192		
Nov	312,210			3,574,402		
Dec	338,204			3,912,606		
Cheddar Cheese						
Jan	265,842	274,082	3.1	265,842	274,082	3.1
Feb	241,532	248,714	3.0	507,374	522,796	3.0
Mar	267,799	270,069	0.8	775,173	792,865	2.3
Apr	271,722	257,133	-5.4	1,046,895	1,049,998	0.3
May	274,229	265,459	-3.2	1,321,124	1,315,457	-0.4
Jun	263,380			1,584,504		
Jul	265,953			1,850,457		
Aug	250,375			2,100,832		
Sep	254,242			2,355,074		
Oct	249,425			2,604,499		
Nov	247,195			2,851,694		
Dec	273,060			3,124,754		

See footnote(s) at end of table.

--continued

**Dairy Products: Production by Product and Month,
United States, 2006-2007 ¹ (continued)**

Product and Month	By Month			Cumulative		
	2006	2007	Change From 2006	2006	2007	Change From 2006
	<i>1,000 Pounds</i>	<i>1,000 Pounds</i>	<i>Percent</i>	<i>1,000 Pounds</i>	<i>1,000 Pounds</i>	<i>Percent</i>
Italian Cheese						
Jan	330,843	353,589	6.9	330,843	353,589	6.9
Feb	306,391	319,585	4.3	637,234	673,174	5.6
Mar	348,058	361,191	3.8	985,292	1,034,365	5.0
Apr	331,202	344,811	4.1	1,316,494	1,379,176	4.8
May	337,437	348,631	3.3	1,653,931	1,727,807	4.5
Jun	328,269			1,982,200		
Jul	320,586			2,302,786		
Aug	333,159			2,635,945		
Sep	327,134			2,963,079		
Oct	339,721			3,302,800		
Nov	330,142			3,632,942		
Dec	355,560			3,988,502		
Mozzarella						
Jan	259,949	279,383	7.5	259,949	279,383	7.5
Feb	240,457	256,343	6.6	500,406	535,726	7.1
Mar	273,367	287,089	5.0	773,773	822,815	6.3
Apr	262,340	276,496	5.4	1,036,113	1,099,311	6.1
May	265,835	278,485	4.8	1,301,948	1,377,796	5.8
Jun	260,874			1,562,822		
Jul	255,341			1,818,163		
Aug	261,166			2,079,329		
Sep	258,736			2,338,065		
Oct	266,315			2,604,380		
Nov	259,149			2,863,529		
Dec	281,033			3,144,562		
Other Italian						
Jan	70,894	74,206	4.7	70,894	74,206	4.7
Feb	65,934	63,242	-4.1	136,828	137,448	0.5
Mar	74,691	74,102	-0.8	211,519	211,550	
Apr	68,862	68,315	-0.8	280,381	279,865	-0.2
May	71,602	70,146	-2.0	351,983	350,011	-0.6
Jun	67,395			419,378		
Jul	65,245			484,623		
Aug	71,993			556,616		
Sep	68,398			625,014		
Oct	73,406			698,420		
Nov	70,993			769,413		
Dec	74,527			843,940		

See footnote(s) at end of table.

--continued

**Dairy Products: Production by Product and Month,
United States, 2006-2007 ¹ (continued)**

Product and Month	By Month			Cumulative		
	2006	2007	Change From 2006	2006	2007	Change From 2006
	<i>1,000 Pounds</i>	<i>1,000 Pounds</i>	<i>Percent</i>	<i>1,000 Pounds</i>	<i>1,000 Pounds</i>	<i>Percent</i>
Butter						
Jan	149,832	151,030	0.8	149,832	151,030	0.8
Feb	136,840	134,171	-2.0	286,672	285,201	-0.5
Mar	141,714	138,196	-2.5	428,386	423,397	-1.2
Apr	127,681	134,355	5.2	556,067	557,752	0.3
May	128,556	125,008	-2.8	684,623	682,760	-0.3
Jun	101,110			785,733		
Jul	94,729			880,462		
Aug	88,880			969,342		
Sep	104,317			1,073,659		
Oct	119,133			1,192,792		
Nov	118,097			1,310,889		
Dec	137,593			1,448,482		
Nonfat Dry Milk, Human						
Jan	111,278	108,849	-2.2	111,278	108,849	-2.2
Feb	117,998	98,098	-16.9	229,276	206,947	-9.7
Mar	128,867	118,034	-8.4	358,143	324,981	-9.3
Apr	130,613	123,068	-5.8	488,756	448,049	-8.3
May	132,935	115,729	-12.9	621,691	563,778	-9.3
Jun	116,846			738,537		
Jul	88,594			827,131		
Aug	73,193			900,324		
Sep	63,278			963,602		
Oct	69,989			1,033,591		
Nov	76,914			1,110,505		
Dec	113,567			1,224,072		
Skim Milk Powders ²						
Jan	30,883	10,812	-65.0	30,883	10,812	-65.0
Feb	27,087	11,032	-59.3	57,970	21,844	-62.3
Mar	21,580	10,195	-52.8	79,550	32,039	-59.7
Apr	14,014	15,568	11.1	93,564	47,607	-49.1
May	19,762	12,987	-34.3	113,326	60,594	-46.5
Jun	23,871			137,197		
Jul	30,900			168,097		
Aug	25,638			193,735		
Sep	22,873			216,608		
Oct	28,967			245,575		
Nov	26,529			272,104		
Dec	16,970			289,074		

See footnote(s) at end of table.

--continued

**Dairy Products: Production by Product and Month,
United States, 2006-2007 ¹ (continued)**

Product and Month	By Month			Cumulative		
	2006	2007	Change From 2006	2006	2007	Change From 2006
	<i>1,000 Pounds</i>	<i>1,000 Pounds</i>	<i>Percent</i>	<i>1,000 Pounds</i>	<i>1,000 Pounds</i>	<i>Percent</i>
Dry Whey, Total ³						
Jan	88,391	96,145	8.8	88,391	96,145	8.8
Feb	89,695	90,232	0.6	178,086	186,377	4.7
Mar	100,953	98,713	-2.2	279,039	285,090	2.2
Apr	95,662	96,818	1.2	374,701	381,908	1.9
May	97,295	99,446	2.2	471,996	481,354	2.0
Jun	89,701			561,697		
Jul	95,226			656,923		
Aug	91,547			748,470		
Sep	86,271			834,741		
Oct	87,434			922,175		
Nov	85,865			1,008,040		
Dec	92,306			1,100,346		
Lactose, Human and Animal						
Jan	64,539	65,064	0.8	64,539	65,064	0.8
Feb	56,311	59,671	6.0	120,850	124,735	3.2
Mar	62,165	64,975	4.5	183,015	189,710	3.7
Apr	63,402	63,083	-0.5	246,417	252,793	2.6
May	66,057	67,118	1.6	312,474	319,911	2.4
Jun	60,027			372,501		
Jul	60,333			432,834		
Aug	64,225			497,059		
Sep	58,964			556,023		
Oct	62,296			618,319		
Nov	60,505			678,824		
Dec	59,832			738,656		
Whey Protein Concentrate, Total						
Jan	37,162	33,055	-11.1	37,162	33,055	-11.1
Feb	34,436	29,432	-14.5	71,598	62,487	-12.7
Mar	37,766	35,038	-7.2	109,364	97,525	-10.8
Apr	37,525	33,188	-11.6	146,889	130,713	-11.0
May	37,373	33,533	-10.3	184,262	164,246	-10.9
Jun	36,190			220,452		
Jul	35,704			256,156		
Aug	35,024			291,180		
Sep	34,581			325,761		
Oct	34,581			360,342		
Nov	33,116			393,458		
Dec	34,266			427,724		

See footnote(s) at end of table.

--continued

**Dairy Products: Production by Product and Month,
United States, 2006-2007 ¹ (continued)**

Product and Month	By Month			Cumulative		
	2006	2007	Change From 2006	2006	2007	Change From 2006
	<i>1,000 Pounds</i>	<i>1,000 Pounds</i>	<i>Percent</i>	<i>1,000 Pounds</i>	<i>1,000 Pounds</i>	<i>Percent</i>
Cream Cottage Cheese						
Jan	29,943	29,227	-2.4	29,943	29,227	-2.4
Feb	29,095	28,326	-2.6	59,038	57,553	-2.5
Mar	32,376	32,027	-1.1	91,414	89,580	-2.0
Apr	28,670	30,465	6.3	120,084	120,045	
May	32,367	32,213	-0.5	152,451	152,258	-0.1
Jun	32,315			184,766		
Jul	29,952			214,718		
Aug	35,692			250,410		
Sep	30,412			280,822		
Oct	30,161			310,983		
Nov	29,538			340,521		
Dec	26,957			367,478		
Lowfat Cottage Cheese						
Jan	34,117	34,556	1.3	34,117	34,556	1.3
Feb	33,186	32,281	-2.7	67,303	66,837	-0.7
Mar	34,771	37,770	8.6	102,074	104,607	2.5
Apr	32,504	34,781	7.0	134,578	139,388	3.6
May	35,874	37,606	4.8	170,452	176,994	3.8
Jun	34,777			205,229		
Jul	34,037			239,266		
Aug	38,861			278,127		
Sep	34,458			312,585		
Oct	33,678			346,263		
Nov	31,775			378,038		
Dec	29,807			407,845		
Sour Cream						
Jan	85,732	90,856	6.0	85,732	90,856	6.0
Feb	80,267	80,054	-0.3	165,999	170,910	3.0
Mar	92,880	90,687	-2.4	258,879	261,597	1.0
Apr	83,097	88,343	6.3	341,976	349,940	2.3
May	94,154	91,798	-2.5	436,130	441,738	1.3
Jun	92,565			528,695		
Jul	87,139			615,834		
Aug	99,020			714,854		
Sep	87,555			802,409		
Oct	101,849			904,258		
Nov	113,822			1,018,080		
Dec	103,385			1,121,465		

See footnote(s) at end of table.

--continued

**Dairy Products: Production by Product and Month,
United States, 2006-2007 ¹ (continued)**

Product and Month	By Month			Cumulative		
	2006	2007	Change From 2006	2006	2007	Change From 2006
	<i>1,000 Gallons</i>	<i>1,000 Gallons</i>	<i>Percent</i>	<i>1,000 Gallons</i>	<i>1,000 Gallons</i>	<i>Percent</i>
Ice Cream, Regular, Hard						
Jan	65,338	64,840	-0.8	65,338	64,840	-0.8
Feb	65,937	65,530	-0.6	131,275	130,370	-0.7
Mar	82,123	78,818	-4.0	213,398	209,188	-2.0
Apr	79,616	80,631	1.3	293,014	289,819	-1.1
May	84,890	85,245	0.4	377,904	375,064	-0.8
Jun	91,954			469,858		
Jul	88,628			558,486		
Aug	89,305			647,791		
Sep	74,979			722,770		
Oct	66,486			789,256		
Nov	58,922			848,178		
Dec	51,144			899,322		
Ice Cream, Lowfat, Total						
Jan	24,286	26,726	10.0	24,286	26,726	10.0
Feb	24,566	28,053	14.2	48,852	54,779	12.1
Mar	31,845	35,734	12.2	80,697	90,513	12.2
Apr	32,333	37,081	14.7	113,030	127,594	12.9
May	36,336	42,142	16.0	149,366	169,736	13.6
Jun	42,339			191,705		
Jul	37,770			229,475		
Aug	36,448			265,923		
Sep	30,887			296,810		
Oct	28,645			325,455		
Nov	23,224			348,679		
Dec	23,521			372,200		
Sherbet, Hard						
Jan	3,944	3,311	-16.0	3,944	3,311	-16.0
Feb	4,135	3,854	-6.8	8,079	7,165	-11.3
Mar	4,634	4,771	3.0	12,713	11,936	-6.1
Apr	4,375	5,368	22.7	17,088	17,304	1.3
May	4,662	5,384	15.5	21,750	22,688	4.3
Jun	4,984			26,734		
Jul	4,886			31,620		
Aug	4,830			36,450		
Sep	3,795			40,245		
Oct	3,642			43,887		
Nov	3,079			46,966		
Dec	2,808			49,774		

See footnote(s) at end of table.

--continued

**Dairy Products: Production by Product and Month,
United States, 2006-2007 ¹ (continued)**

Product and Month	By Month			Cumulative		
	2006	2007	Change From 2006	2006	2007	Change From 2006
	<i>1,000 Pounds</i>	<i>1,000 Pounds</i>	<i>Percent</i>	<i>1,000 Pounds</i>	<i>1,000 Pounds</i>	<i>Percent</i>
Yogurt, Plain & Flavored						
Jan	269,591	286,256	6.2	269,591	286,256	6.2
Feb	260,430	285,283	9.5	530,021	571,539	7.8
Mar	307,110	313,746	2.2	837,131	885,285	5.8
Apr	270,181	304,504	12.7	1,107,312	1,189,789	7.4
May	282,100	297,198	5.4	1,389,412	1,486,987	7.0
Jun	290,529			1,679,941		
Jul	266,544			1,946,485		
Aug	294,044			2,240,529		
Sep	288,769			2,529,298		
Oct	273,415			2,802,713		
Nov	238,194			3,040,907		
Dec	253,680			3,294,587		
	<i>1,000 Gallons</i>	<i>1,000 Gallons</i>	<i>Percent</i>	<i>1,000 Gallons</i>	<i>1,000 Gallons</i>	<i>Percent</i>
Yogurt, Frozen						
Jan	4,563	4,589	0.6	4,563	4,589	0.6
Feb	4,746	4,151	-12.5	9,309	8,740	-6.1
Mar	6,126	6,524	6.5	15,435	15,264	-1.1
Apr	5,897	6,494	10.1	21,332	21,758	2.0
May	6,636	6,331	-4.6	27,968	28,089	0.4
Jun	6,697			34,665		
Jul	6,368			41,033		
Aug	6,877			47,910		
Sep	5,756			53,666		
Oct	5,296			58,962		
Nov	4,408			63,370		
Dec	4,080			67,450		

¹ April 2007 data revised.

² Includes protein standardized and blends.

³ Excludes all modified dry whey products.

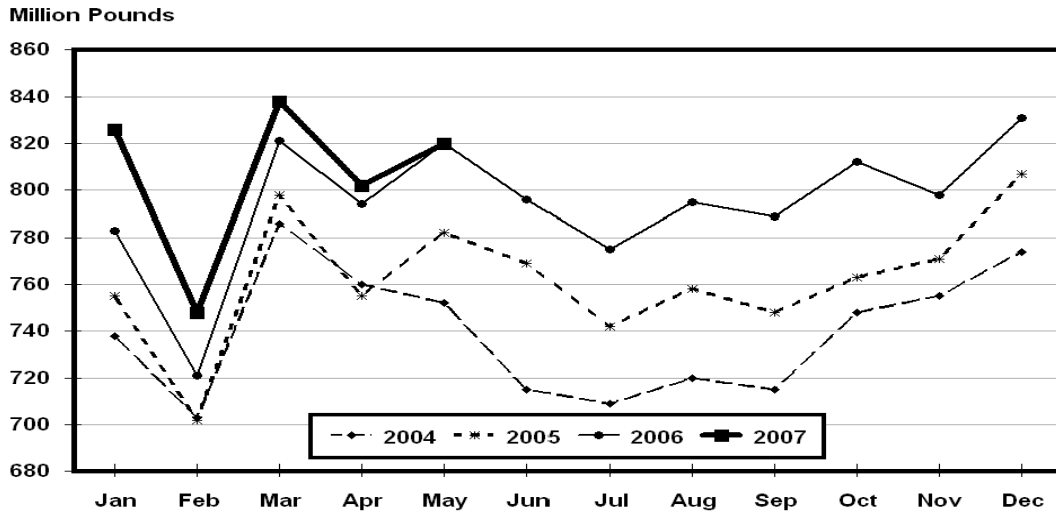
Total Cheese, Excluding Cottage Cheese: Production by State and United States, May 2006-2007

State	May 2006	Apr ¹ 2007	May 2007	Change From	
				May 2006	Apr 2007
	<i>1,000 Pounds</i>	<i>1,000 Pounds</i>	<i>1,000 Pounds</i>	<i>Percent</i>	<i>Percent</i>
CA	186,950	194,397	195,335	4.5	0.5
ID	68,067	66,553	67,008	-1.6	0.7
IL	6,535	6,147	5,936	-9.2	-3.4
IA	13,832	11,697	12,163	-12.1	4.0
MN	55,367	51,370	52,118	-5.9	1.5
NM	51,091	50,891	49,976	-2.2	-1.8
NY	56,923	57,316	60,678	6.6	5.9
OH	18,308	16,026	16,925	-7.6	5.6
PA	34,074	32,078	33,764	-0.9	5.3
SD	14,358	15,104	14,746	2.7	-2.4
UT	8,264	7,905	9,049	9.5	14.5
WI	214,739	200,845	207,534	-3.4	3.3
Oth Sts ²	91,526	92,151	94,597	3.4	2.7
US	820,034	802,480	819,829		2.2
Atlantic	109,761	108,133	113,335	3.3	4.8
Central	352,479	332,469	341,996	-3.0	2.9
West	357,794	361,878	364,498	1.9	0.7

¹ Revised.

² States not shown when fewer than 3 plants reported or individual plant operations could be disclosed. Percent change shown only when comparable States are included in the calculation.

Total Cheese Production United States



American Cheese: Production by State and United States, May 2006-2007

State	May 2006	Apr ¹ 2007	May 2007	Change From	
				May 2006	Apr 2007
	<i>1,000 Pounds</i>	<i>1,000 Pounds</i>	<i>1,000 Pounds</i>	<i>Percent</i>	<i>Percent</i>
CA	70,964	68,932	70,934		2.9
ID	49,845	52,543	52,570	5.5	0.1
MN	51,358	47,378	47,814	-6.9	0.9
OH	3,869	2,123	2,186	-43.5	3.0
OR	9,348	8,571	8,719	-6.7	1.7
WI	74,744	63,725	67,800	-9.3	6.4
Oth Sts ²	86,034	82,472	81,528	-5.2	-1.1
US	346,162	325,744	331,551	-4.2	1.8
Atlantic	13,345	13,454	13,616	2.0	1.2
Central	153,825	134,725	139,892	-9.1	3.8
West	178,992	177,565	178,043	-0.5	0.3

¹ Revised.

² States not shown when fewer than 3 plants reported or individual plant operations could be disclosed. Percent change shown only when comparable States are included in the calculation.

Cheddar Cheese: Production by State and United States, May 2006-2007

State	May 2006	Apr ¹ 2007	May 2007	Change From	
				May 2006	Apr 2007
	<i>1,000 Pounds</i>	<i>1,000 Pounds</i>	<i>1,000 Pounds</i>	<i>Percent</i>	<i>Percent</i>
CA	42,552	39,753	42,213	-0.8	6.2
ID	46,182	49,136	49,920	8.1	1.6
MN	45,898	43,900	44,146	-3.8	0.6
OH	2,765	1,849	1,912	-30.8	3.4
WI	58,139	50,911	53,600	-7.8	5.3
Oth Sts ²	78,693	71,584	73,668	-6.4	2.9
US	274,229	257,133	265,459	-3.2	3.2
Atlantic	12,995	12,766	13,059	0.5	2.3
Central	124,649	112,070	115,874	-7.0	3.4
West	136,585	132,297	136,526		3.2

¹ Revised.

² States not shown when fewer than 3 plants reported or individual plant operations could be disclosed. Percent change shown only when comparable States are included in the calculation.

Italian Cheese, Total: Production by State and United States, May 2006-2007

State	May 2006	Apr ¹ 2007	May 2007	Change From	
				May 2006	Apr 2007
	<i>1,000 Pounds</i>	<i>1,000 Pounds</i>	<i>1,000 Pounds</i>	<i>Percent</i>	<i>Percent</i>
CA	98,847	104,662	106,487	7.7	1.7
ID	12,368	12,367	12,785	3.4	3.4
NY	31,662	32,406	32,766	3.5	1.1
PA	23,109	21,932	22,284	-3.6	1.6
SD	6,921	7,496	6,980	0.9	-6.9
WI	99,392	98,642	98,454	-0.9	-0.2
Oth Sts ²	65,138	67,306	68,875	5.7	2.3
US	337,437	344,811	348,631	3.3	1.1
Atlantic	63,542	62,833	63,005	-0.8	0.3
Central	128,359	129,577	128,986	0.5	-0.5
West	145,536	152,401	156,640	7.6	2.8

¹ Revised.

² States not shown when fewer than 3 plants reported or individual plant operations could be disclosed. Percent change shown only when comparable States are included in the calculation.

Mozzarella Cheese: Production by State and United States, May 2006-2007

State	May 2006	Apr ¹ 2007	May 2007	Change From	
				May 2006	Apr 2007
	<i>1,000 Pounds</i>	<i>1,000 Pounds</i>	<i>1,000 Pounds</i>	<i>Percent</i>	<i>Percent</i>
CA	87,320	94,128	94,535	8.3	0.4
ID	10,867	10,681	10,811	-0.5	1.2
NY	16,872	16,860	17,185	1.9	1.9
PA	19,282	18,424	19,009	-1.4	3.2
WI	71,447	72,740	72,700	1.8	-0.1
Oth Sts ²	60,047	63,663	64,245	7.0	0.9
US	265,835	276,496	278,485	4.8	0.7
Atlantic	41,703	41,010	41,557	-0.4	1.3
Central	92,669	96,377	95,425	3.0	-1.0
West	131,463	139,109	141,503	7.6	1.7

¹ Revised.

² States not shown when fewer than 3 plants reported or individual plant operations could be disclosed. Percent change shown only when comparable States are included in the calculation.

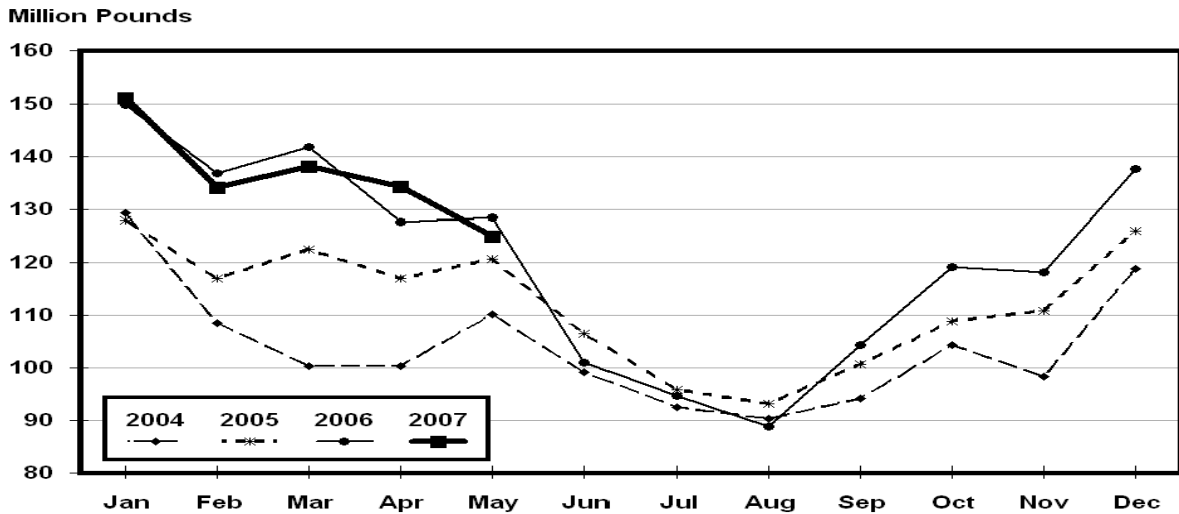
Butter: Production by State and United States, May 2006-2007

State	May 2006	Apr ¹ 2007	May 2007	Change From	
				May 2006	Apr 2007
	<i>1,000 Pounds</i>	<i>1,000 Pounds</i>	<i>1,000 Pounds</i>	<i>Percent</i>	<i>Percent</i>
CA	37,670	41,215	37,818	0.4	-8.2
NY	1,658	1,354	1,380	-16.8	1.9
PA	6,950	7,452	7,329	5.5	-1.7
WI	32,955	31,873	34,400	4.4	7.9
Oth Sts ²	49,323	52,461	44,081	-10.6	-16.0
US	128,556	134,355	125,008	-2.8	-7.0
Atlantic	13,300	14,159	12,154	-8.6	-14.2
Central	56,643	58,990	60,580	7.0	2.7
West	58,613	61,206	52,274	-10.8	-14.6

¹ Revised.

² States not shown when fewer than 3 plants reported or individual plant operations could be disclosed. Percent change shown only when comparable States are included in the calculation.

**Total Butter Production
United States**



**Nonfat Dry Milk, Human: Production by State
and United States, May 2006-2007**

State	May 2006	Apr ¹ 2007	May 2007	Change From	
				May 2006	Apr 2007
	<i>1,000 Pounds</i>	<i>1,000 Pounds</i>	<i>1,000 Pounds</i>	<i>Percent</i>	<i>Percent</i>
CA	56,619	63,307	59,040	4.3	-6.7
Oth Sts ²	76,316	59,761	56,689	-25.7	-5.1
US	132,935	123,068	115,729	-12.9	-6.0
Atlantic	25,467	13,809	14,526	-43.0	5.2
Central	18,059	16,433	17,375	-3.8	5.7
West	89,409	92,826	83,828	-6.2	-9.7

¹ Revised.

² States not shown when fewer than 3 plants reported or individual plant operations could be disclosed. Percent change shown only when comparable States are included in the calculation.

**Dry Whey, Human: Production by State
and United States, May 2006-2007**

State	May 2006	Apr ¹ 2007	May 2007	Change From	
				May 2006	Apr 2007
	<i>1,000 Pounds</i>	<i>1,000 Pounds</i>	<i>1,000 Pounds</i>	<i>Percent</i>	<i>Percent</i>
CA	9,962	7,035	7,058	-29.2	0.3
MN	4,478	4,767	4,904	9.5	2.9
NY	12,257	11,278	10,957	-10.6	-2.8
WI	26,091	26,129	27,300	4.6	4.5
Oth Sts ²	39,063	43,799	44,287	13.4	1.1
US	91,851	93,008	94,506	2.9	1.6
Atlantic	22,143	21,043	20,999	-5.2	-0.2
Central	41,719	42,215	43,462	4.2	3.0
West	27,989	29,750	30,045	7.3	1.0

¹ Revised.

² States not shown when fewer than 3 plants reported or individual plant operations could be disclosed. Percent change shown only when comparable States are included in the calculation.

Ice Cream, Regular, Hard: Production by State and United States, May 2006-2007

State	May 2006	Apr ¹ 2007	May 2007	Change From	
				May 2006	Apr 2007
	<i>1,000 Gallons</i>	<i>1,000 Gallons</i>	<i>1,000 Gallons</i>	<i>Percent</i>	<i>Percent</i>
CA	11,734	12,603	14,272	21.6	13.2
FL	1,760	1,500	1,700	-3.4	13.3
IN	6,104	6,286	6,549	7.3	4.2
MA	5,134	3,693	3,419	-33.4	-7.4
MN	4,488	3,494	3,736	-16.8	6.9
MO	2,434	2,894	2,199	-9.7	-24.0
NY	2,761	2,685	2,628	-4.8	-2.1
NC	1,608	1,079	1,513	-5.9	40.2
OH	2,195	1,402	2,001	-8.8	42.7
OR	1,070	1,059	1,127	5.3	6.4
PA	3,149	3,051	3,325	5.6	9.0
TN	1,513	1,437	1,405	-7.1	-2.2
TX	6,371	5,385	6,149	-3.5	14.2
UT	2,633	2,752	2,741	4.1	-0.4
Oth Sts ²	31,936	31,311	32,481	1.7	3.7
US	84,890	80,631	85,245	0.4	5.7
N Atl	14,620	13,208	12,504	-14.5	-5.3
S Atl	8,440	7,848	8,577	1.6	9.3
E N Cen	14,805	14,010	15,724	6.2	12.2
W N Cen	15,610	14,707	14,709	-5.8	
S Cen	12,439	11,026	11,966	-3.8	8.5
West	18,976	19,832	21,765	14.7	9.7

¹ Revised.

² States not shown when fewer than 3 plants reported or individual plant operations could be disclosed. Percent change shown only when comparable States are included in the calculation.

**Canned Milk and Dry Milk Products: Manufacturers' Shipments,
and Stocks, May, 2006-2007**

Product	May 2006	Apr 2007 ¹	May 2007	Change From	
				May 2006	Apr 2007
	Manufacturers' Shipments²				
	<i>1,000 Pounds</i>	<i>1,000 Pounds</i>	<i>1,000 Pounds</i>	<i>Percent</i>	<i>Percent</i>
Nonfat Dry Milk, Human	131,990	109,681	116,384	-11.8	6.1
	Manufacturers' Stocks End-of-Month³				
	<i>1,000 Pounds</i>	<i>1,000 Pounds</i>	<i>1,000 Pounds</i>	<i>Percent</i>	<i>Percent</i>
Canned Evaporated and Condensed Whole Milk	79,363	59,547	54,240	-31.7	-8.9
Nonfat Dry Milk, Human	145,726	98,972	91,177	-37.4	-7.9
Dry Buttermilk, Total	14,494	6,926	6,451	-55.5	-6.9

¹ Revised.

² For dry products, shipments of bulk goods only.

³ Stocks held by manufacturers at all points and in transit.

Procedures and Reliability: Estimates included in this report are based on data provided each month by manufacturers of these products. In 32 States, the State Departments of Agriculture assist in collection of data, which eliminates duplicate reporting and reduces respondent burden. Data are collected by mail, personal and telephone interviews following the close of each month. There were 1,080 manufacturers that made one or more products in 2006. Each month, reports are generally received from all dairy plants in States with small numbers of plants. In States with large numbers of plants, survey procedures are designed to obtain monthly reports from all large plants and from a sample of small plants. Monthly estimates are based upon returns from about 70 percent of the plants which account for 70 to 90 percent of the total production of major dairy products.

Revision Policy: Monthly estimates are subject to revision the month following the preliminary estimates. Annual estimates are published in the "**Dairy Products**" report published each April which includes any revisions made to current and previous year. An attempt is made to get information from all plants for preparing these estimates

Information Contacts

Listed below are the commodity specialists in the Livestock Branch of the National Agricultural Statistics Service to contact for additional information.

Dan Kerestes, Chief, Livestock Branch	(202) 720-3570
William Weaver, Head, Livestock Section	(202) 720-3570
Bruce Boess - Hogs and Pigs	(202) 720-3106
Shawn Clark - Dairy Products	(202) 690-3236
Jason Hardegree - Milk Production and Milk Cows	(202) 720-3278
Benita Hodge - Livestock Slaughter	(515) 284-4340
Scott Hollis - Sheep & Lambs, Goats	(202) 720-4751
Mike Miller - Cattle, Cattle on Feed	(202) 720-3040
Charmaine Wilson - Dairy Products Prices	(202) 690-2168

ACCESS TO REPORTS!!

For your convenience, there are several ways to obtain NASS reports, data products, and services:

INTERNET ACCESS

All NASS reports are available free of charge on the worldwide Internet. For access, connect to the Internet and go to the NASS Home Page at: www.nass.usda.gov.

E-MAIL SUBSCRIPTION

All NASS reports are available by subscription free of charge direct to your e-mail address. Starting with the NASS Home Page at www.nass.usda.gov, under the right navigation, *Receive reports by Email*, click on **National** or **State**. Follow the instructions on the screen.

PRINTED REPORTS OR DATA PRODUCTS

CALL OUR TOLL-FREE ORDER DESK: 800-999-6779 (U.S. and Canada)
Other areas, please call 703-605-6220 FAX: 703-605-6900
(Visa, MasterCard, check, or money order acceptable for payment.)

ASSISTANCE

For **assistance** with general agricultural statistics or further information about NASS or its products or services, contact the **Agricultural Statistics Hotline** at **800-727-9540**, 7:30 a.m. to 4:00 p.m. ET, or e-mail: nass@nass.usda.gov.

The U.S. Department of Agriculture (USDA) prohibits discrimination in all its programs and activities on the basis of race, color, national origin, age, disability, and where applicable, sex, marital status, familial status, parental status, religion, sexual orientation, genetic information, political beliefs, reprisal, or because all or a part of an individual's income is derived from any public assistance program. (Not all prohibited bases apply to all programs.) Persons with disabilities who require alternative means for communication of program information (Braille, large print, audiotape, etc.) should contact USDA's TARGET Center at (202) 720-2600 (voice and TDD).

To file a complaint of discrimination, write to USDA, Director, Office of Civil Rights, 1400 Independence Avenue, S.W., Washington, D.C. 20250-9410, or call (800) 795-3272 (voice) or (202) 720-6382 (TDD). USDA is an equal opportunity provider and employer.