
Released October 4, 2007, by the National Agricultural Statistics Service (NASS), Agricultural Statistics Board, U.S. Department of Agriculture. For information on *Dairy Products* call Shawn Clark at (202) 690-2424, office hours 7:30 a.m. to 4:00 p.m. ET.

August 2007 Highlights

Total cheese output (excluding cottage cheese) was 795 million pounds, 0.1 percent below August 2006 and 0.1 percent below July 2007.

Italian type cheese production totaled 334 million pounds, 0.2 percent above August 2006 but 0.4 percent below July 2007.

American type cheese production totaled 312 million pounds, 1.8 percent below August 2006 and 3.1 percent below July 2007.

Butter production was 110 million pounds, 23.6 percent above August 2006 but 4.9 percent below July 2007.

Dry Milk Powders: (comparisons with August 2006)

Nonfat dry milk, human --- 103 million pounds, up 40.7 percent.

Skim milk powders --- 17.9 million pounds, down 30.1 percent.

Whey products: (comparisons with August 2006)

Dry whey, total --- 94.6 million pounds, up 3.4 percent.

Lactose, human and animal --- 62.5 million pounds, down 2.7 percent.

Whey protein concentrate, total --- 30.1 million pounds, down 14.0 percent.

Frozen products: (comparisons with August 2006)

Ice cream, Regular (hard) --- 82.5 million gallons, down 7.7 percent.

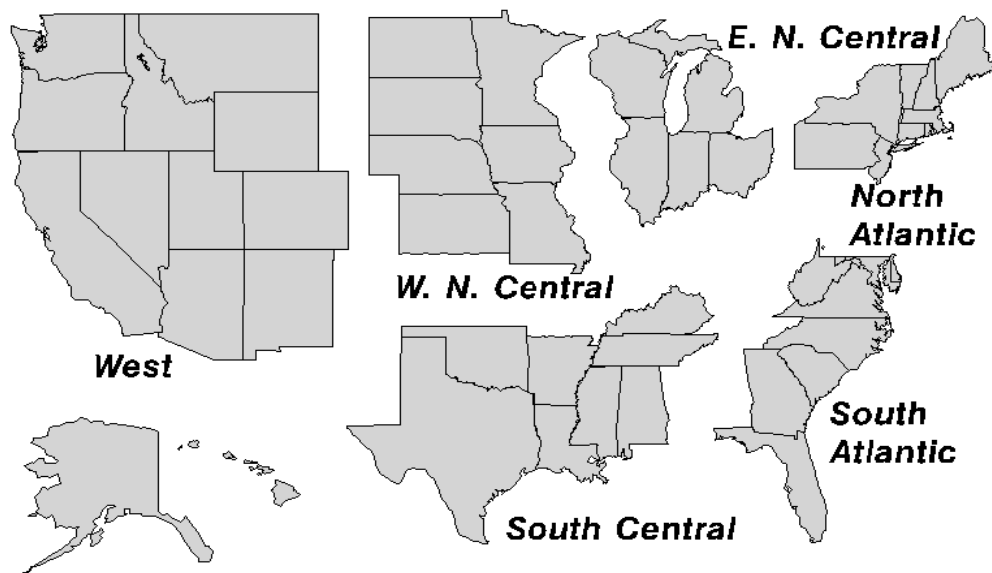
Ice cream, Lowfat (total) --- 38.9 million gallons, up 6.7 percent.

Sherbet (hard) --- 4.86 million gallons, up 1 percent.

Frozen Yogurt (total) --- 5.68 million gallons, down 17.4 percent.

U. S. Geographic Regions Dairy Products

If we are not able to publish a region for confidentiality reasons, it will be combined with other regions when possible. For example, if North Atlantic can not be published, then it will be combined with South Atlantic to publish Atlantic. The West North Central and East North Central will be necessary, to form North Central. In the event that neither could be published, they may be combined with South Central to publish Central. Some tables will have only limited regions shown, therefore the regions may not add to the United States total.



Contents

Page

Dairy Products: Production by Product, United States	1
Whey and Modified Whey Products: Production, Stocks, and Prices, United States	2
Dairy Products: Production by Product and Month, United States	3
Select Commodities by State and United States	10
Canned Milk and Dry Milk Products: Manufacturer's Shipments, Stocks, and Selling Prices	15
Procedures and Reliability	16
Information Contacts	16

**Dairy Products: Production by Product,
United States, August, 2006-2007**

Product	Aug 2006	Jul 2007 ¹	Aug 2007	Change From	
				Aug 2006	Jul 2007
	<i>1,000 Pounds</i>	<i>1,000 Pounds</i>	<i>1,000 Pounds</i>	<i>Percent</i>	<i>Percent</i>
Butter	88,880	115,468	109,828	23.6	-4.9
Cheese					
American Types ²	318,071	322,256	312,254	-1.8	-3.1
Cheddar	250,375	253,290	240,521	-3.9	-5.0
Swiss	25,236	25,656	25,828	2.3	0.7
Brick and Muenster	9,826	9,767	10,684	8.7	9.4
Cream and Neufchatel	69,623	63,415	72,425	4.0	14.2
Hispanic	16,346	16,051	15,952	-2.4	-0.6
Mozzarella	261,166	269,764	264,254	1.2	-2.0
Other Italian Types	71,993	65,317	69,548	-3.4	6.5
Total Italian Types	333,159	335,081	333,802	0.2	-0.4
All Other Types	22,872	23,237	23,730	3.8	2.1
Total	795,133	795,463	794,675	-0.1	-0.1
Cottage Cheese, Curd ³	43,247	38,356	42,849	-0.9	11.7
Cottage Cheese, Cream ⁴	35,692	30,376	32,710	-8.4	7.7
Cottage Cheese, Lowfat ⁵	38,861	37,110	40,315	3.7	8.6
Canned Evaporated and Condensed Whole Milk	44,848	41,422	44,876	0.1	8.3
Dry Whole Milk	2,905	3,682	2,052	-29.4	-44.3
Nonfat Dry Milk, Human Skim Milk Powders ⁶	73,193	123,152	102,990	40.7	-16.4
Dry Skim Milk, Animal	404	729	325	-19.6	-55.4
Dry Buttermilk	3,522	6,704	5,773	63.9	-13.9
Sour Cream	99,020	89,001	93,770	-5.3	5.4
Yogurt, Plain & Flavored	294,044	288,479	310,273	5.5	7.6
	<i>1,000 Gallons</i>	<i>1,000 Gallons</i>	<i>1,000 Gallons</i>	<i>Percent</i>	<i>Percent</i>
Frozen Products					
Ice Cream, Regular, Hard	89,305	85,886	82,466	-7.7	-4.0
Ice Cream, Lowfat, Hard	10,949	12,359	12,483	14.0	1.0
Ice Cream, Lowfat, Soft	25,499	27,455	26,409	3.6	-3.8
Ice Cream, Lowfat, Total	36,448	39,814	38,892	6.7	-2.3
Ice Cream, Nonfat, Hard	1,410	1,364	1,300	-7.8	-4.7
Sherbet, Hard	4,830	5,264	4,858	0.6	-7.7
Water and Juice Ices	5,921	6,503	4,725	-20.2	-27.3
Frozen Yogurt, Total	6,877	5,772	5,679	-17.4	-1.6
Regular & Lowfat, Hard	1,784	1,925	2,023	13.4	5.1
Nonfat, Hard	1,177	665	588	-50.0	-11.6
Other Frozen Dairy Products	1,054	980	1,336	26.8	36.3
Mix for Frozen Products					
Ice Cream Mix	49,435	48,563	45,142	-8.7	-7.0
Ice Cream, Lowfat, Mix	21,863	22,945	22,384	2.4	-2.4
Ice Cream, Nonfat, Mix	872	785	729	-16.4	-7.1
Sherbet Mix	3,485	3,315	3,143	-9.8	-5.2
Yogurt Mix	4,257	3,498	3,442	-19.1	-1.6

¹ Revised.

² Includes Cheddar, Colby, Monterey, and Jack.

³ Mostly used for processing into cream or lowfat cottage cheese.

⁴ Fat content 4 percent or more.

⁵ Fat content less than 4 percent.

⁶ Includes protein standardized and blends.

**Whey and Modified Whey Products: Production, Stocks,
and Prices, United States, August, 2006-2007**

Product	Aug 2006	Jul 2007 ¹	Aug 2007	Change From	
				Aug 2006	Jul 2007
Production					
	<i>1,000 Pounds</i>	<i>1,000 Pounds</i>	<i>1,000 Pounds</i>	<i>Percent</i>	<i>Percent</i>
Condensed Whey, Solids Content ²					
Sweet-Type, Human	9,571	9,120	9,296	-2.9	1.9
Dry Whey Products					
Dry Whey, Human	87,722	91,053	89,092	1.6	-2.2
Dry Whey, Animal	3,825	4,548	5,553	45.2	22.1
Dry Whey, Total	91,547	95,601	94,645	3.4	-1.0
Reduced Lactose and Minerals					
Human Food	3,589	3,571	3,213	-10.5	-10.0
Animal Feed	3,770	4,014	4,415	17.1	10.0
Lactose, Human and Animal	64,225	64,473	62,496	-2.7	-3.1
Whey					
Protein Concentrate					
Human ³	31,074	30,023	26,728	-14.0	-11.0
Animal ³	3,950	3,319	3,393	-14.1	2.2
Total ³	35,024	33,342	30,121	-14.0	-9.7
25.0-49.9 Percent ⁴	23,688	22,272	19,766	-16.6	-11.3
50.0-89.9 Percent ⁴	11,336	11,070	10,355	-8.7	-6.5
Protein Isolates ⁵	2,505	2,691	3,004	19.9	11.6
Manufacturers' Stocks End-of-Month ⁶					
	<i>1,000 Pounds</i>	<i>1,000 Pounds</i>	<i>1,000 Pounds</i>	<i>Percent</i>	<i>Percent</i>
Dry Whey Products					
Dry Whey, Human	37,638	57,867	58,583	55.6	1.2
Dry Whey, Animal	1,858	6,194	6,216	234.6	0.4
Dry Whey, Total	39,496	64,061	64,799	64.1	1.2
Reduced Lactose and Minerals					
Human and Animal ⁷	4,087	9,839	10,345	153.1	5.1
Lactose, Human and Animal	37,672	49,502	52,582	39.6	6.2
Whey					
Protein Concentrate					
Human ³	24,624	25,238	23,718	-3.7	-6.0
Animal ³	2,433	2,657	2,317	-4.8	-12.8
Total ³	27,057	27,895	26,035	-3.8	-6.7
25.0-49.9 Percent ⁴	18,482	18,690	18,263	-1.2	-2.3
50.0-89.9 Percent ⁴	8,575	9,205	7,772	-9.4	-15.6
Manufacturers' Selling Price ⁸					
	<i>Cents per Pound</i>	<i>Cents per Pound</i>	<i>Cents per Pound</i>	<i>Cents Change</i>	<i>Cents Change</i>
Dry Whey, Animal	25.1	60.9	47.5	22.4	-13.4

¹ Revised.

² Final marketable product only. Does not include quantity used or shipped to another plant for further processing into dry whey or modified whey products. Does not include sweet-type, animal whey.

³ Whey Protein Concentrate, 25.0 to 89.9 percent.

⁴ Whey Protein Concentrate, Human and Animal.

⁵ Whey Protein Isolate, 90.0 percent or greater.

⁶ Stocks held by manufacturers at all points and in transit.

⁷ Reduced lactose and minerals stocks combined to avoid disclosure of individual operations.

⁸ Prices for bulk goods, f.o.b. plant. Average monthly prices reported by firms.

**Dairy Products: Production by Product and Month,
United States, 2006-2007¹**

Product and Month	By Month			Cumulative		
	2006	2007	Change From 2006	2006	2007	Change From 2006
	<i>1,000 Pounds</i>	<i>1,000 Pounds</i>	<i>Percent</i>	<i>1,000 Pounds</i>	<i>1,000 Pounds</i>	<i>Percent</i>
Total Cheese						
Jan	782,671	825,969	5.5	782,671	825,969	5.5
Feb	720,501	748,496	3.9	1,503,172	1,574,465	4.7
Mar	820,805	837,743	2.1	2,323,977	2,412,208	3.8
Apr	793,585	802,480	1.1	3,117,562	3,214,688	3.1
May	820,034	820,429		3,937,596	4,035,117	2.5
Jun	796,104	790,252	-0.7	4,733,700	4,825,369	1.9
Jul	775,398	795,463	2.6	5,509,098	5,620,832	2.0
Aug	795,133	794,675	-0.1	6,304,231	6,415,507	1.8
Sep	788,604			7,092,835		
Oct	812,276			7,905,111		
Nov	798,104			8,703,215		
Dec	831,116			9,534,331		
American Cheese						
Jan	325,636	343,095	5.4	325,636	343,095	5.4
Feb	299,035	305,474	2.2	624,671	648,569	3.8
Mar	336,095	338,377	0.7	960,766	986,946	2.7
Apr	337,267	325,744	-3.4	1,298,033	1,312,690	1.1
May	346,162	331,408	-4.3	1,644,195	1,644,098	
Jun	331,375	315,701	-4.7	1,975,570	1,959,799	-0.8
Jul	327,511	322,256	-1.6	2,303,081	2,282,055	-0.9
Aug	318,071	312,254	-1.8	2,621,152	2,594,309	-1.0
Sep	320,115			2,941,267		
Oct	320,925			3,262,192		
Nov	312,210			3,574,402		
Dec	338,204			3,912,606		
Cheddar Cheese						
Jan	265,842	274,082	3.1	265,842	274,082	3.1
Feb	241,532	248,714	3.0	507,374	522,796	3.0
Mar	267,799	270,069	0.8	775,173	792,865	2.3
Apr	271,722	257,133	-5.4	1,046,895	1,049,998	0.3
May	274,229	265,412	-3.2	1,321,124	1,315,410	-0.4
Jun	263,380	251,466	-4.5	1,584,504	1,566,876	-1.1
Jul	265,953	253,290	-4.8	1,850,457	1,820,166	-1.6
Aug	250,375	240,521	-3.9	2,100,832	2,060,687	-1.9
Sep	254,242			2,355,074		
Oct	249,425			2,604,499		
Nov	247,195			2,851,694		
Dec	273,060			3,124,754		

See footnote(s) at end of table.

--continued

**Dairy Products: Production by Product and Month,
United States, 2006-2007¹ (continued)**

Product and Month	By Month			Cumulative		
	2006	2007	Change From 2006	2006	2007	Change From 2006
	<i>1,000 Pounds</i>	<i>1,000 Pounds</i>	<i>Percent</i>	<i>1,000 Pounds</i>	<i>1,000 Pounds</i>	<i>Percent</i>
Italian Cheese						
Jan	330,843	353,589	6.9	330,843	353,589	6.9
Feb	306,391	319,585	4.3	637,234	673,174	5.6
Mar	348,058	361,191	3.8	985,292	1,034,365	5.0
Apr	331,202	344,811	4.1	1,316,494	1,379,176	4.8
May	337,437	349,263	3.5	1,653,931	1,728,439	4.5
Jun	328,269	337,308	2.8	1,982,200	2,065,747	4.2
Jul	320,586	335,081	4.5	2,302,786	2,400,828	4.3
Aug	333,159	333,802	0.2	2,635,945	2,734,630	3.7
Sep	327,134			2,963,079		
Oct	339,721			3,302,800		
Nov	330,142			3,632,942		
Dec	355,560			3,988,502		
Mozzarella						
Jan	259,949	279,383	7.5	259,949	279,383	7.5
Feb	240,457	256,343	6.6	500,406	535,726	7.1
Mar	273,367	287,089	5.0	773,773	822,815	6.3
Apr	262,340	276,496	5.4	1,036,113	1,099,311	6.1
May	265,835	278,766	4.9	1,301,948	1,378,077	5.8
Jun	260,874	273,297	4.8	1,562,822	1,651,374	5.7
Jul	255,341	269,764	5.6	1,818,163	1,921,138	5.7
Aug	261,166	264,254	1.2	2,079,329	2,185,392	5.1
Sep	258,736			2,338,065		
Oct	266,315			2,604,380		
Nov	259,149			2,863,529		
Dec	281,033			3,144,562		
Other Italian						
Jan	70,894	74,206	4.7	70,894	74,206	4.7
Feb	65,934	63,242	-4.1	136,828	137,448	0.5
Mar	74,691	74,102	-0.8	211,519	211,550	
Apr	68,862	68,315	-0.8	280,381	279,865	-0.2
May	71,602	70,497	-1.5	351,983	350,362	-0.5
Jun	67,395	64,011	-5.0	419,378	414,373	-1.2
Jul	65,245	65,317	0.1	484,623	479,690	-1.0
Aug	71,993	69,548	-3.4	556,616	549,238	-1.3
Sep	68,398			625,014		
Oct	73,406			698,420		
Nov	70,993			769,413		
Dec	74,527			843,940		

See footnote(s) at end of table.

--continued

**Dairy Products: Production by Product and Month,
United States, 2006-2007 ¹ (continued)**

Product and Month	By Month			Cumulative		
	2006	2007	Change From 2006	2006	2007	Change From 2006
	<i>1,000 Pounds</i>	<i>1,000 Pounds</i>	<i>Percent</i>	<i>1,000 Pounds</i>	<i>1,000 Pounds</i>	<i>Percent</i>
Butter						
Jan	149,832	151,030	0.8	149,832	151,030	0.8
Feb	136,840	134,171	-2.0	286,672	285,201	-0.5
Mar	141,714	138,196	-2.5	428,386	423,397	-1.2
Apr	127,681	134,355	5.2	556,067	557,752	0.3
May	128,556	124,417	-3.2	684,623	682,169	-0.4
Jun	101,110	109,719	8.5	785,733	791,888	0.8
Jul	94,729	115,468	21.9	880,462	907,356	3.1
Aug	88,880	109,828	23.6	969,342	1,017,184	4.9
Sep	104,317			1,073,659		
Oct	119,133			1,192,792		
Nov	118,097			1,310,889		
Dec	137,593			1,448,482		
Nonfat Dry Milk, Human						
Jan	111,278	108,849	-2.2	111,278	108,849	-2.2
Feb	117,998	98,098	-16.9	229,276	206,947	-9.7
Mar	128,867	118,034	-8.4	358,143	324,981	-9.3
Apr	130,613	123,068	-5.8	488,756	448,049	-8.3
May	132,935	115,949	-12.8	621,691	563,998	-9.3
Jun	116,846	119,333	2.1	738,537	683,331	-7.5
Jul	88,594	123,152	39.0	827,131	806,483	-2.5
Aug	73,193	102,990	40.7	900,324	909,473	1.0
Sep	63,278			963,602		
Oct	69,989			1,033,591		
Nov	76,914			1,110,505		
Dec	113,567			1,224,072		
Skim Milk Powders ²						
Jan	30,883	10,812	-65.0	30,883	10,812	-65.0
Feb	27,087	11,032	-59.3	57,970	21,844	-62.3
Mar	21,580	10,195	-52.8	79,550	32,039	-59.7
Apr	14,014	15,568	11.1	93,564	47,607	-49.1
May	19,762	12,987	-34.3	113,326	60,594	-46.5
Jun	23,871	16,419	-31.2	137,197	77,013	-43.9
Jul	30,900	19,212	-37.8	168,097	96,225	-42.8
Aug	25,638	17,922	-30.1	193,735	114,147	-41.1
Sep	22,873			216,608		
Oct	28,967			245,575		
Nov	26,529			272,104		
Dec	16,970			289,074		

See footnote(s) at end of table.

--continued

**Dairy Products: Production by Product and Month,
United States, 2006-2007¹ (continued)**

Product and Month	By Month			Cumulative		
	2006	2007	Change From 2006	2006	2007	Change From 2006
	<i>1,000 Pounds</i>	<i>1,000 Pounds</i>	<i>Percent</i>	<i>1,000 Pounds</i>	<i>1,000 Pounds</i>	<i>Percent</i>
Dry Whey, Total ³						
Jan	88,391	96,145	8.8	88,391	96,145	8.8
Feb	89,695	90,232	0.6	178,086	186,377	4.7
Mar	100,953	98,713	-2.2	279,039	285,090	2.2
Apr	95,662	96,818	1.2	374,701	381,908	1.9
May	97,295	99,198	2.0	471,996	481,106	1.9
Jun	89,701	94,628	5.5	561,697	575,734	2.5
Jul	95,226	95,601	0.4	656,923	671,335	2.2
Aug	91,547	94,645	3.4	748,470	765,980	2.3
Sep	86,271			834,741		
Oct	87,434			922,175		
Nov	85,865			1,008,040		
Dec	92,306			1,100,346		
Lactose, Human and Animal						
Jan	64,539	65,064	0.8	64,539	65,064	0.8
Feb	56,311	59,671	6.0	120,850	124,735	3.2
Mar	62,165	64,975	4.5	183,015	189,710	3.7
Apr	63,402	63,083	-0.5	246,417	252,793	2.6
May	66,057	67,145	1.6	312,474	319,938	2.4
Jun	60,027	62,013	3.3	372,501	381,951	2.5
Jul	60,333	64,473	6.9	432,834	446,424	3.1
Aug	64,225	62,496	-2.7	497,059	508,920	2.4
Sep	58,964			556,023		
Oct	62,296			618,319		
Nov	60,505			678,824		
Dec	59,832			738,656		
Whey Protein Concentrate, Total						
Jan	37,162	33,055	-11.1	37,162	33,055	-11.1
Feb	34,436	29,432	-14.5	71,598	62,487	-12.7
Mar	37,766	35,038	-7.2	109,364	97,525	-10.8
Apr	37,525	33,188	-11.6	146,889	130,713	-11.0
May	37,373	33,436	-10.5	184,262	164,149	-10.9
Jun	36,190	33,672	-7.0	220,452	197,821	-10.3
Jul	35,704	33,342	-6.6	256,156	231,163	-9.8
Aug	35,024	30,121	-14.0	291,180	261,284	-10.3
Sep	34,581			325,761		
Oct	34,581			360,342		
Nov	33,116			393,458		
Dec	34,266			427,724		

See footnote(s) at end of table.

--continued

**Dairy Products: Production by Product and Month,
United States, 2006-2007 ¹ (continued)**

Product and Month	By Month			Cumulative		
	2006	2007	Change From 2006	2006	2007	Change From 2006
	<i>1,000 Pounds</i>	<i>1,000 Pounds</i>	<i>Percent</i>	<i>1,000 Pounds</i>	<i>1,000 Pounds</i>	<i>Percent</i>
Cream Cottage Cheese						
Jan	29,943	29,227	-2.4	29,943	29,227	-2.4
Feb	29,095	28,326	-2.6	59,038	57,553	-2.5
Mar	32,376	32,027	-1.1	91,414	89,580	-2.0
Apr	28,670	30,465	6.3	120,084	120,045	
May	32,367	32,328	-0.1	152,451	152,373	-0.1
Jun	32,315	30,477	-5.7	184,766	182,850	-1.0
Jul	29,952	30,376	1.4	214,718	213,226	-0.7
Aug	35,692	32,710	-8.4	250,410	245,936	-1.8
Sep	30,412			280,822		
Oct	30,161			310,983		
Nov	29,538			340,521		
Dec	26,957			367,478		
Lowfat Cottage Cheese						
Jan	34,117	34,556	1.3	34,117	34,556	1.3
Feb	33,186	32,281	-2.7	67,303	66,837	-0.7
Mar	34,771	37,770	8.6	102,074	104,607	2.5
Apr	32,504	34,781	7.0	134,578	139,388	3.6
May	35,874	37,869	5.6	170,452	177,257	4.0
Jun	34,777	37,516	7.9	205,229	214,773	4.7
Jul	34,037	37,110	9.0	239,266	251,883	5.3
Aug	38,861	40,315	3.7	278,127	292,198	5.1
Sep	34,458			312,585		
Oct	33,678			346,263		
Nov	31,775			378,038		
Dec	29,807			407,845		
Sour Cream						
Jan	85,732	90,856	6.0	85,732	90,856	6.0
Feb	80,267	80,054	-0.3	165,999	170,910	3.0
Mar	92,880	90,687	-2.4	258,879	261,597	1.0
Apr	83,097	88,343	6.3	341,976	349,940	2.3
May	94,154	94,848	0.7	436,130	444,788	2.0
Jun	92,565	88,483	-4.4	528,695	533,271	0.9
Jul	87,139	89,001	2.1	615,834	622,272	1.0
Aug	99,020	93,770	-5.3	714,854	716,042	0.2
Sep	87,555			802,409		
Oct	101,849			904,258		
Nov	113,822			1,018,080		
Dec	103,385			1,121,465		

See footnote(s) at end of table.

--continued

**Dairy Products: Production by Product and Month,
United States, 2006-2007¹ (continued)**

Product and Month	By Month			Cumulative		
	2006	2007	Change From 2006	2006	2007	Change From 2006
	<i>1,000 Gallons</i>	<i>1,000 Gallons</i>	<i>Percent</i>	<i>1,000 Gallons</i>	<i>1,000 Gallons</i>	<i>Percent</i>
Ice Cream, Regular, Hard						
Jan	65,338	64,840	-0.8	65,338	64,840	-0.8
Feb	65,937	65,530	-0.6	131,275	130,370	-0.7
Mar	82,123	78,818	-4.0	213,398	209,188	-2.0
Apr	79,616	80,631	1.3	293,014	289,819	-1.1
May	84,890	85,254	0.4	377,904	375,073	-0.7
Jun	91,954	89,369	-2.8	469,858	464,442	-1.2
Jul	88,628	85,886	-3.1	558,486	550,328	-1.5
Aug	89,305	82,466	-7.7	647,791	632,794	-2.3
Sep	74,979			722,770		
Oct	66,486			789,256		
Nov	58,922			848,178		
Dec	51,144			899,322		
Ice Cream, Lowfat, Total						
Jan	24,286	26,726	10.0	24,286	26,726	10.0
Feb	24,566	28,053	14.2	48,852	54,779	12.1
Mar	31,845	35,734	12.2	80,697	90,513	12.2
Apr	32,333	37,081	14.7	113,030	127,594	12.9
May	36,336	42,147	16.0	149,366	169,741	13.6
Jun	42,339	43,605	3.0	191,705	213,346	11.3
Jul	37,770	39,814	5.4	229,475	253,160	10.3
Aug	36,448	38,892	6.7	265,923	292,052	9.8
Sep	30,887			296,810		
Oct	28,645			325,455		
Nov	23,224			348,679		
Dec	23,521			372,200		
Sherbet, Hard						
Jan	3,944	3,311	-16.0	3,944	3,311	-16.0
Feb	4,135	3,854	-6.8	8,079	7,165	-11.3
Mar	4,634	4,771	3.0	12,713	11,936	-6.1
Apr	4,375	5,368	22.7	17,088	17,304	1.3
May	4,662	5,384	15.5	21,750	22,688	4.3
Jun	4,984	5,897	18.3	26,734	28,585	6.9
Jul	4,886	5,264	7.7	31,620	33,849	7.0
Aug	4,830	4,858	0.6	36,450	38,707	6.2
Sep	3,795			40,245		
Oct	3,642			43,887		
Nov	3,079			46,966		
Dec	2,808			49,774		

See footnote(s) at end of table.

--continued

**Dairy Products: Production by Product and Month,
United States, 2006-2007 ¹ (continued)**

Product and Month	By Month			Cumulative		
	2006	2007	Change From 2006	2006	2007	Change From 2006
	<i>1,000 Pounds</i>	<i>1,000 Pounds</i>	<i>Percent</i>	<i>1,000 Pounds</i>	<i>1,000 Pounds</i>	<i>Percent</i>
Yogurt, Plain & Flavored						
Jan	269,591	286,256	6.2	269,591	286,256	6.2
Feb	260,430	285,283	9.5	530,021	571,539	7.8
Mar	307,110	313,746	2.2	837,131	885,285	5.8
Apr	270,181	304,504	12.7	1,107,312	1,189,789	7.4
May	282,100	300,052	6.4	1,389,412	1,489,841	7.2
Jun	290,529	284,764	-2.0	1,679,941	1,774,605	5.6
Jul	266,544	288,479	8.2	1,946,485	2,063,084	6.0
Aug	294,044	310,273	5.5	2,240,529	2,373,357	5.9
Sep	288,769			2,529,298		
Oct	273,415			2,802,713		
Nov	238,194			3,040,907		
Dec	253,680			3,294,587		
	<i>1,000 Gallons</i>	<i>1,000 Gallons</i>	<i>Percent</i>	<i>1,000 Gallons</i>	<i>1,000 Gallons</i>	<i>Percent</i>
Yogurt, Frozen						
Jan	4,563	4,589	0.6	4,563	4,589	0.6
Feb	4,746	4,151	-12.5	9,309	8,740	-6.1
Mar	6,126	6,524	6.5	15,435	15,264	-1.1
Apr	5,897	6,494	10.1	21,332	21,758	2.0
May	6,636	6,291	-5.2	27,968	28,049	0.3
Jun	6,697	7,098	6.0	34,665	35,147	1.4
Jul	6,368	5,772	-9.4	41,033	40,919	-0.3
Aug	6,877	5,679	-17.4	47,910	46,598	-2.7
Sep	5,756			53,666		
Oct	5,296			58,962		
Nov	4,408			63,370		
Dec	4,080			67,450		

¹ July 2007 data revised.

² Includes protein standardized and blends.

³ Excludes all modified dry whey products.

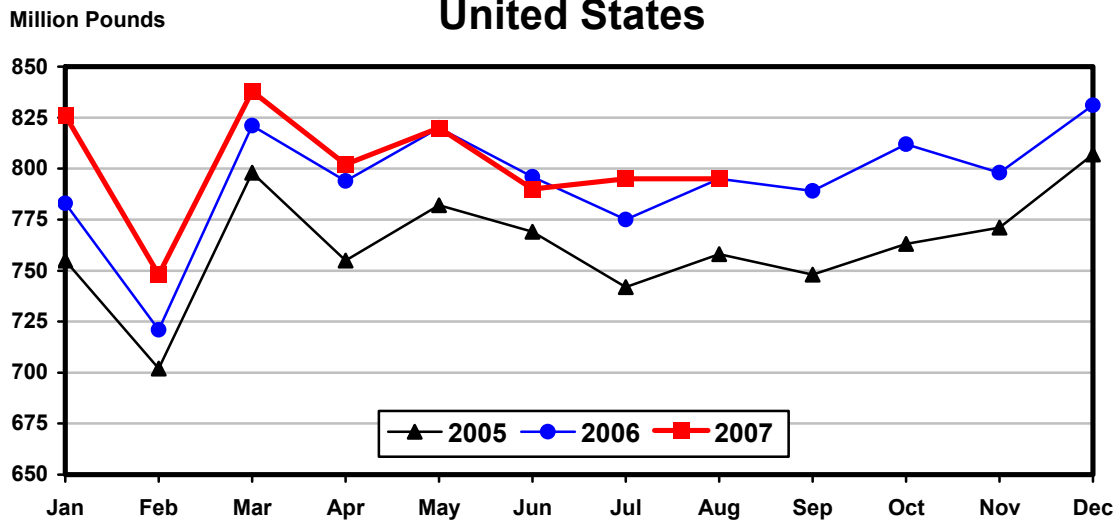
Total Cheese, Excluding Cottage Cheese: Production by State and United States, August 2006-2007

State	Aug 2006	Jul ¹ 2007	Aug 2007	Change From	
				Aug 2006	Jul 2007
	<i>1,000 Pounds</i>	<i>1,000 Pounds</i>	<i>1,000 Pounds</i>	<i>Percent</i>	<i>Percent</i>
CA	188,479	195,688	190,547	1.1	-2.6
ID	69,295	65,686	66,851	-3.5	1.8
IL	6,337	6,335	6,467	2.1	2.1
IA	11,604	11,639	12,132	4.6	4.2
MN	48,873	52,176	48,752	-0.2	-6.6
NM	48,407	45,054	41,300	-14.7	-8.3
NY	60,768	56,504	63,156	3.9	11.8
OH	16,293	15,614	16,058	-1.4	2.8
PA	29,774	33,502	32,359	8.7	-3.4
SD	16,119	15,041	15,677	-2.7	4.2
UT	8,499	9,430	9,616	13.1	2.0
WI	203,462	200,106	203,003	-0.2	1.4
Oth Sts ²	87,223	88,688	88,757	1.8	0.1
US	795,133	795,463	794,675	-0.1	-0.1
Atlantic	110,204	108,662	115,788	5.1	6.6
Central	327,533	329,547	328,505	0.3	-0.3
West	357,396	357,254	350,382	-2.0	-1.9

¹ Revised.

² States not shown when fewer than 3 plants reported or individual plant operations could be disclosed. Percent change shown only when comparable States are included in the calculation.

Total Cheese Production United States



American Cheese: Production by State and United States, August 2006-2007

State	Aug 2006	Jul ¹ 2007	Aug 2007	Change From	
				Aug 2006	Jul 2007
	<i>1,000 Pounds</i>	<i>1,000 Pounds</i>	<i>1,000 Pounds</i>	<i>Percent</i>	<i>Percent</i>
CA	67,397	69,991	67,617	0.3	-3.4
ID	49,827	51,808	52,871	6.1	2.1
MN	46,174	48,197	44,780	-3.0	-7.1
OH	3,164	2,143	2,039	-35.6	-4.9
OR	9,732	9,475	9,213	-5.3	-2.8
WI	62,780	64,230	61,300	-2.4	-4.6
Oth Sts ²	78,997	76,412	74,434	-5.8	-2.6
US	318,071	322,256	312,254	-1.8	-3.1
Atlantic	12,006	11,838	12,517	4.3	5.7
Central	131,950	136,779	129,017	-2.2	-5.7
West	174,115	173,639	170,720	-1.9	-1.7

¹ Revised.

² States not shown when fewer than 3 plants reported or individual plant operations could be disclosed. Percent change shown only when comparable States are included in the calculation.

Cheddar Cheese: Production by State and United States, August 2006-2007

State	Aug 2006	Jul ¹ 2007	Aug 2007	Change From	
				Aug 2006	Jul 2007
	<i>1,000 Pounds</i>	<i>1,000 Pounds</i>	<i>1,000 Pounds</i>	<i>Percent</i>	<i>Percent</i>
CA	40,763	40,476	39,416	-3.3	-2.6
ID	46,033	48,822	42,353	-8.0	-13.3
MN	41,119	44,222	40,900	-0.5	-7.5
OH	2,286	1,949	1,807	-21.0	-7.3
WI	47,837	52,193	48,500	1.4	-7.1
Oth Sts ²	72,337	65,628	67,545	-6.6	2.9
US	250,375	253,290	240,521	-3.9	-5.0
Atlantic	11,565	11,523	12,239	5.8	6.2
Central	105,182	113,948	107,094	1.8	-6.0
West	133,628	127,819	121,188	-9.3	-5.2

¹ Revised.

² States not shown when fewer than 3 plants reported or individual plant operations could be disclosed. Percent change shown only when comparable States are included in the calculation.

**Italian Cheese, Total: Production by State and
United States, August 2006-2007**

State	Aug 2006	Jul ¹ 2007	Aug 2007	Change From	
				Aug 2006	Jul 2007
	<i>1,000 Pounds</i>	<i>1,000 Pounds</i>	<i>1,000 Pounds</i>	<i>Percent</i>	<i>Percent</i>
CA	104,401	107,794	105,683	1.2	-2.0
ID	11,949	11,708	11,631	-2.7	-0.7
NY	31,922	29,847	31,246	-2.1	4.7
PA	18,351	21,763	20,375	11.0	-6.4
SD	8,922	7,310	7,929	-11.1	8.5
WI	98,657	90,845	95,190	-3.5	4.8
Oth Sts ²	58,957	65,814	61,748	4.7	-6.2
US	333,159	335,081	333,802	0.2	-0.4
Atlantic	59,458	60,756	60,985	2.6	0.4
Central	124,092	120,816	122,962	-0.9	1.8
West	149,609	153,509	149,855	0.2	-2.4

¹ Revised.

² States not shown when fewer than 3 plants reported or individual plant operations could be disclosed. Percent change shown only when comparable States are included in the calculation.

Mozzarella Cheese: Production by State and United States, August 2006-2007

State	Aug 2006	Jul ¹ 2007	Aug 2007	Change From	
				Aug 2006	Jul 2007
	<i>1,000 Pounds</i>	<i>1,000 Pounds</i>	<i>1,000 Pounds</i>	<i>Percent</i>	<i>Percent</i>
CA	92,457	96,717	93,664	1.3	-3.2
ID	10,442	9,750	9,860	-5.6	1.1
NY	15,913	16,160	16,032	0.7	-0.8
PA	15,444	18,721	17,841	15.5	-4.7
WI	70,360	66,231	69,200	-1.6	4.5
Oth Sts ²	56,550	62,185	57,657	2.0	-7.3
US	261,166	269,764	264,254	1.2	-2.0
Atlantic	37,398	41,204	39,950	6.8	-3.0
Central	88,901	89,083	89,240	0.4	0.2
West	134,867	139,477	135,064	0.1	-3.2

¹ Revised.

² States not shown when fewer than 3 plants reported or individual plant operations could be disclosed. Percent change shown only when comparable States are included in the calculation.

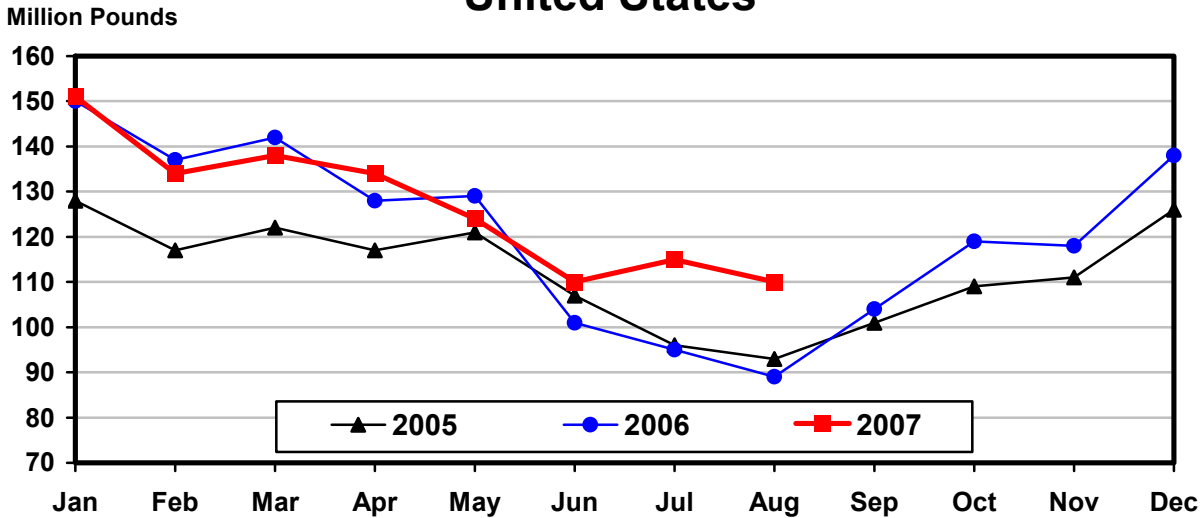
Butter: Production by State and United States, August 2006-2007

State	Aug 2006	Jul ¹ 2007	Aug 2007	Change From	
				Aug 2006	Jul 2007
	<i>1,000 Pounds</i>	<i>1,000 Pounds</i>	<i>1,000 Pounds</i>	<i>Percent</i>	<i>Percent</i>
CA	31,674	39,960	38,573	21.8	-3.5
NY	688	1,011	647	-6.0	-36.0
PA	1,822	4,353	2,783	52.7	-36.1
WI	22,073	27,200	26,900	21.9	-1.1
Oth Sts ²	32,623	42,944	40,925	25.4	-4.7
US	88,880	115,468	109,828	23.6	-4.9
Atlantic	4,335	6,865	4,675	7.8	-31.9
Central	38,171	49,308	45,545	19.3	-7.6
West	46,374	59,295	59,608	28.5	0.5

¹ Revised.

² States not shown when fewer than 3 plants reported or individual plant operations could be disclosed. Percent change shown only when comparable States are included in the calculation.

Total Butter Production United States



**Nonfat Dry Milk, Human: Production by State
and United States, August 2006-2007**

State	Aug 2006	Jul ¹ 2007	Aug 2007	Change From	
				Aug 2006	Jul 2007
	<i>1,000 Pounds</i>	<i>1,000 Pounds</i>	<i>1,000 Pounds</i>	<i>Percent</i>	<i>Percent</i>
CA	42,707	62,297	59,405	39.1	-4.6
Oth Sts ²	30,486	60,855	43,585	43.0	-28.4
US	73,193	123,152	102,990	40.7	-16.4
Atlantic	4,307	18,521	9,631	123.6	-48.0
Central	5,103	16,525	11,882	132.8	-28.1
West	63,783	88,106	81,477	27.7	-7.5

¹ Revised.

² States not shown when fewer than 3 plants reported or individual plant operations could be disclosed. Percent change shown only when comparable States are included in the calculation.

**Dry Whey, Human: Production by State
and United States, August 2006-2007**

State	Aug 2006	Jul ¹ 2007	Aug 2007	Change From	
				Aug 2006	Jul 2007
	<i>1,000 Pounds</i>	<i>1,000 Pounds</i>	<i>1,000 Pounds</i>	<i>Percent</i>	<i>Percent</i>
CA	8,060	7,331	6,436	-20.1	-12.2
MN	4,890	4,956	4,837	-1.1	-2.4
NY	11,196	10,865	10,862	-3.0	
WI	23,631	24,902	25,900	9.6	4.0
Oth Sts ²	39,945	42,999	41,057	2.8	-4.5
US	87,722	91,053	89,092	1.6	-2.2
Atlantic	18,988	20,704	19,436	2.4	-6.1
Central	38,229	40,687	41,235	7.9	1.3
West	30,505	29,662	28,421	-6.8	-4.2

¹ Revised.

² States not shown when fewer than 3 plants reported or individual plant operations could be disclosed. Percent change shown only when comparable States are included in the calculation.

**Ice Cream, Regular, Hard: Production by State and United States,
August 2006-2007**

State	Aug 2006	Jul ¹ 2007	Aug 2007	Change From	
				Aug 2006	Jul 2007
	<i>1,000 Gallons</i>	<i>1,000 Gallons</i>	<i>1,000 Gallons</i>	<i>Percent</i>	<i>Percent</i>
CA	13,809	12,658	12,365	-10.5	-2.3
FL	1,445	1,350	1,250	-13.5	-7.4
IN	7,669	6,307	6,010	-21.6	-4.7
MA	4,486	4,480	3,472	-22.6	-22.5
MN	4,002	3,352	3,213	-19.7	-4.1
MO	2,059	2,699	2,141	4.0	-20.7
NY	2,659	2,498	2,972	11.8	19.0
NC	1,538	1,444	1,368	-11.1	-5.3
OH	2,600	1,997	2,395	-7.9	19.9
OR	1,116	1,289	1,101	-1.3	-14.6
PA	4,131	3,301	3,316	-19.7	0.5
TN	1,722	1,348	1,240	-28.0	-8.0
TX	6,992	5,984	6,008	-14.1	0.4
UT	2,723	2,445	2,345	-13.9	-4.1
Oth Sts ²	32,354	34,734	33,270	2.8	-4.2
US	89,305	85,886	82,466	-7.7	-4.0
N Atl	14,564	13,627	13,122	-9.9	-3.7
S Atl	8,917	9,395	9,173	2.9	-2.4
E N Cen	16,933	14,403	14,782	-12.7	2.6
W N Cen	14,024	16,187	14,364	2.4	-11.3
S Cen	13,561	11,883	11,910	-12.2	0.2
West	21,306	20,391	19,115	-10.3	-6.3

¹ Revised.

² States not shown when fewer than 3 plants reported or individual plant operations could be disclosed. Percent change shown only when comparable States are included in the calculation.

**Canned Milk and Dry Milk Products: Manufacturers' Shipments,
and Stocks, August, 2006-2007**

Product	Aug 2006	Jul 2007 ¹	Aug 2007	Change From	
				Aug 2006	Jul 2007
				Manufacturers' Shipments ²	
	<i>1,000 Pounds</i>	<i>1,000 Pounds</i>	<i>1,000 Pounds</i>	<i>Percent</i>	<i>Percent</i>
Nonfat Dry Milk, Human	93,344	102,014	81,377	-12.8	-20.2
				Manufacturers' Stocks End-of-Month ³	
	<i>1,000 Pounds</i>	<i>1,000 Pounds</i>	<i>1,000 Pounds</i>	<i>Percent</i>	<i>Percent</i>
Canned Evaporated and Condensed Whole Milk	92,403	73,523	80,710	-12.7	9.8
Nonfat Dry Milk, Human	55,658	125,195	140,464	152.4	12.2
Dry Buttermilk, Total	3,954	8,171	10,137	156.4	24.1

¹ Revised.

² For dry products, shipments of bulk goods only.

³ Stocks held by manufacturers at all points and in transit.

Procedures and Reliability: Estimates included in this report are based on data provided each month by manufacturers of these products. In 32 States, the State Departments of Agriculture assist in collection of data, which eliminates duplicate reporting and reduces respondent burden. Data are collected by mail, personal and telephone interviews following the close of each month. There were 1,080 manufacturers that made one or more products in 2006. Each month, reports are generally received from all dairy plants in States with small numbers of plants. In States with large numbers of plants, survey procedures are designed to obtain monthly reports from all large plants and from a sample of small plants. Monthly estimates are based upon returns from about 70 percent of the plants which account for 70 to 90 percent of the total production of major dairy products.

Revision Policy: Monthly estimates are subject to revision the month following the preliminary estimates. Annual estimates are published in the "**Dairy Products**" report published each April which includes any revisions made to current and previous year. An attempt is made to get information from all plants for preparing these estimates

Information Contacts

Listed below are the commodity specialists in the Livestock Branch of the National Agricultural Statistics Service to contact for additional information.

Dan Kerestes, Chief, Livestock Branch (202) 720-3570

Livestock Section

Shawn Clark, Head, Livestock Section (202) 720-3570
 Bruce Boess - Hogs and Pigs (202) 720-3106
 Vacant - Dairy Products (202) 690-3236
 Jason Hardegree - Milk Production and Milk Cows (202) 720-3278
 Scott Hollis - Sheep & Lambs, Goats & Kids (202) 720-4751
 Mike Miller - Cattle, Cattle on Feed (202) 720-3040
 Benita Hodge - Livestock Slaughter (515) 284-4340
 Vacant - Dairy Products Prices (202) 690-2168

ACCESS TO REPORTS!!

For your convenience, there are several ways to obtain NASS reports, data products, and services:

INTERNET ACCESS

All NASS reports are available free of charge on the worldwide Internet. For access, connect to the Internet and go to the NASS Home Page at: **www.nass.usda.gov**.

E-MAIL SUBSCRIPTION

All NASS reports are available by subscription free of charge direct to your e-mail address. Starting with the NASS Home Page at **www.nass.usda.gov**, under the right navigation, *Receive reports by Email*, click on **National** or **State**. Follow the instructions on the screen.

PRINTED REPORTS OR DATA PRODUCTS

CALL OUR TOLL-FREE ORDER DESK: 800-999-6779 (U.S. and Canada)
Other areas, please call 703-605-6220 FAX: 703-605-6900
(Visa, MasterCard, check, or money order acceptable for payment.)

ASSISTANCE

For **assistance** with general agricultural statistics or further information about NASS or its products or services, contact the **Agricultural Statistics Hotline** at **800-727-9540**, 7:30 a.m. to 4:00 p.m. ET, or e-mail: **nass@nass.usda.gov**.

The U.S. Department of Agriculture (USDA) prohibits discrimination in all its programs and activities on the basis of race, color, national origin, age, disability, and where applicable, sex, marital status, familial status, parental status, religion, sexual orientation, genetic information, political beliefs, reprisal, or because all or a part of an individual's income is derived from any public assistance program. (Not all prohibited bases apply to all programs.) Persons with disabilities who require alternative means for communication of program information (Braille, large print, audiotape, etc.) should contact USDA's TARGET Center at (202) 720-2600 (voice and TDD).

To file a complaint of discrimination, write to USDA, Director, Office of Civil Rights, 1400 Independence Avenue, S.W., Washington, D.C. 20250-9410, or call (800) 795-3272 (voice) or (202) 720-6382 (TDD). USDA is an equal opportunity provider and employer.