

---

Released December 3, 2007, by the National Agricultural Statistics Service (NASS), Agricultural Statistics Board, U.S. Department of Agriculture. For information on *Dairy Products* call Shawn Clark at (202) 690-2424, office hours 7:30 a.m. to 4:00 p.m. ET.

## October 2007 Highlights

**Total cheese** output (excluding cottage cheese) was 825 million pounds, 1.6 percent above October 2006 and 6.4 percent above September 2007.

**Italian type cheese** production totaled 346 million pounds, 1.8 percent above October 2006 and 4.7 percent above September 2007.

**American type cheese** production totaled 325 million pounds, 1.2 percent above October 2006 and 7.9 percent above September 2007.

**Butter** production was 130 million pounds, 9.1 percent above October 2006 and 16.3 percent above September 2007.

**Dry Milk Powders:** (comparisons with October 2006)

Nonfat dry milk, human --- 98.9 million pounds, up 41.4 percent.

Skim milk powders --- 21.4 million pounds, down 26.0 percent.

**Whey products:** (comparisons with October 2006)

Dry whey, total --- 88.8 million pounds, up 1.6 percent.

Lactose, human and animal --- 60.8 million pounds, down 2.4 percent.

Whey protein concentrate, total --- 32.5 million pounds, down 6.0 percent.

**Frozen products:** (comparisons with October 2006)

Ice cream, Regular (hard) --- 69.4 million gallons, up 4.4 percent.

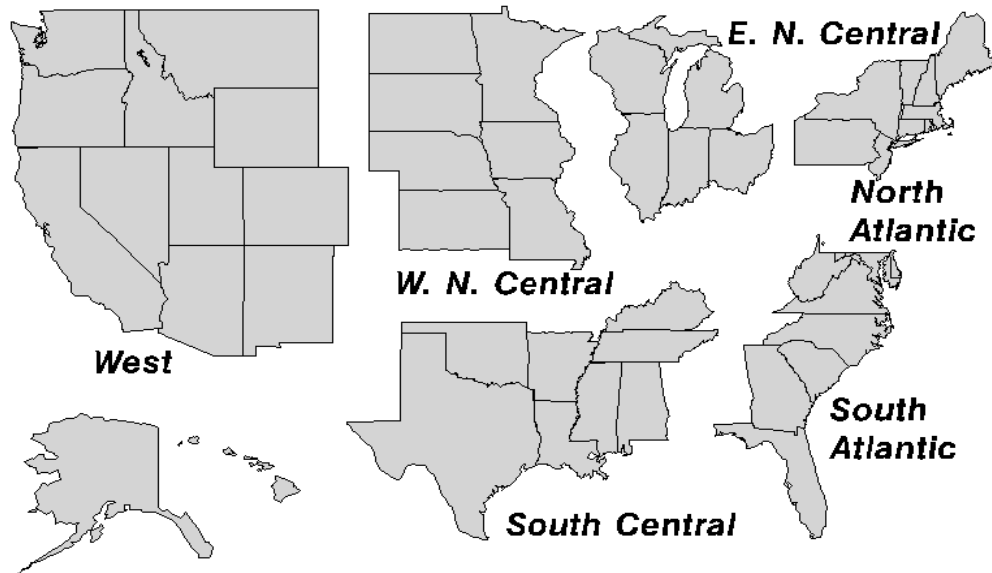
Ice cream, Lowfat (total) --- 29.3 million gallons, up 2.3 percent.

Sherbet (hard) --- 3.98 million gallons, up 9.2 percent.

Frozen Yogurt (total) --- 4.09 million gallons, down 22.7 percent.

## U. S. Geographic Regions Dairy Products

If we are not able to publish a region for confidentiality reasons, it will be combined with other regions when possible. For example, if North Atlantic can not be published, then it will be combined with South Atlantic to publish Atlantic. The West North Central and East North Central will be combined, if necessary, to form North Central. In the event that neither could be published, they may be combined with South Central to publish Central. Some tables will have only limited regions shown, therefore the regions may not add to the United States total.



## Contents

## Page

Dairy Products: Production by Product, United States .....	1
Whey and Modified Whey Products: Production, Stocks, and Prices, United States.....	2
Dairy Products: Production by Product and Month, United States.....	3
Select Commodities by State and United States .....	10
Canned Milk and Dry Milk Products: Manufacturer's Shipments, Stocks, and Selling Prices.....	15
Procedures and Reliability .....	16
Information Contacts .....	16

**Dairy Products: Production by Product,  
United States, October, 2006-2007**

Product	Oct 2006	Sep 2007 <sup>1</sup>	Oct 2007	Change From	
				Oct 2006	Sep 2007
	<i>1,000 Pounds</i>	<i>1,000 Pounds</i>	<i>1,000 Pounds</i>	<i>Percent</i>	<i>Percent</i>
Butter	119,133	111,774	129,958	9.1	16.3
Cheese					
American Types <sup>2</sup>	320,925	301,004	324,915	1.2	7.9
Cheddar	249,425	230,982	248,334	-0.4	7.5
Swiss	26,268	25,204	25,740	-2.0	2.1
Brick and Muenster	8,921	9,162	10,439	17.0	13.9
Cream and Neufchatel	76,492	71,518	77,517	1.3	8.4
Hispanic	15,009	15,836	17,082	13.8	7.9
Mozzarella	266,315	263,728	273,692	2.8	3.8
Other Italian Types	73,406	66,475	72,103	-1.8	8.5
Total Italian Types	339,721	330,203	345,795	1.8	4.7
All Other Types	24,940	22,674	23,842	-4.4	5.2
Total	812,276	775,601	825,330	1.6	6.4
Cottage Cheese, Curd <sup>3</sup>	38,353	40,195	39,274	2.4	-2.3
Cottage Cheese, Cream <sup>4</sup>	30,161	30,713	30,154		-1.8
Cottage Cheese, Lowfat <sup>5</sup>	33,678	35,142	35,716	6.1	1.6
Canned Evaporated and Condensed Whole Milk	43,671	41,568	38,959	-10.8	-6.3
Dry Whole Milk	2,020	2,223	1,678	-16.9	-24.5
Nonfat Dry Milk, Human	69,989	89,704	98,939	41.4	10.3
Skim Milk Powders <sup>6</sup>	28,967	14,884	21,438	-26.0	44.0
Dry Skim Milk, Animal	339	385	410	20.9	6.5
Dry Buttermilk	5,040	5,111	6,610	31.2	29.3
Sour Cream	101,849	84,814	99,711	-2.1	17.6
Yogurt, Plain & Flavored	273,415	315,993	296,678	8.5	-6.1
	<i>1,000 Gallons</i>	<i>1,000 Gallons</i>	<i>1,000 Gallons</i>	<i>Percent</i>	<i>Percent</i>
Frozen Products					
Ice Cream, Regular, Hard	66,486	69,189	69,389	4.4	0.3
Ice Cream, Lowfat, Hard	10,271	12,155	11,881	15.7	-2.3
Ice Cream, Lowfat, Soft	18,374	18,024	17,418	-5.2	-3.4
Ice Cream, Lowfat, Total	28,645	30,179	29,299	2.3	-2.9
Ice Cream, Nonfat, Hard	1,040	1,110	951	-8.6	-14.3
Sherbet, Hard	3,642	4,323	3,976	9.2	-8.0
Water and Juice Ices	3,839	4,129	4,512	17.5	9.3
Frozen Yogurt, Total	5,296	4,333	4,094	-22.7	-5.5
Regular & Lowfat, Hard	1,377	1,886	1,582	14.9	-16.1
Nonfat, Hard	805	584	476	-40.9	-18.5
Other Frozen Dairy Products	960	927	1,079	12.4	16.4
Mix for Frozen Products					
Ice Cream Mix	36,607	38,573	37,397	2.2	-3.0
Ice Cream, Lowfat, Mix	16,688	17,190	16,683		-2.9
Ice Cream, Nonfat, Mix	617	622	529	-14.3	-15.0
Sherbet Mix	2,658	2,653	2,456	-7.6	-7.4
Yogurt Mix	3,096	2,626	2,481	-19.9	-5.5

<sup>1</sup> Revised.

<sup>2</sup> Includes Cheddar, Colby, Monterey, and Jack.

<sup>3</sup> Mostly used for processing into cream or lowfat cottage cheese.

<sup>4</sup> Fat content 4 percent or more.

<sup>5</sup> Fat content less than 4 percent.

<sup>6</sup> Includes protein standardized and blends.

**Whey and Modified Whey Products: Production, Stocks,  
and Prices, United States, October, 2006-2007**

Product	Oct 2006	Sep 2007 <sup>1</sup>	Oct 2007	Change From	
				Oct 2006	Sep 2007
<b>Production</b>					
	<i>1,000 Pounds</i>	<i>1,000 Pounds</i>	<i>1,000 Pounds</i>	<i>Percent</i>	<i>Percent</i>
Condensed Whey, Solids Content <sup>2</sup>					
Sweet-Type, Human	8,612	9,272	9,602	11.5	3.6
Dry Whey Products					
Dry Whey, Human	84,260	82,112	84,688	0.5	3.1
Dry Whey, Animal	3,174	5,270	4,125	30.0	-21.7
Dry Whey, Total	87,434	87,382	88,813	1.6	1.6
Reduced Lactose and Minerals					
Human Food	4,407	3,476	3,972	-9.9	14.3
Animal Feed	3,680	4,239	4,376	18.9	3.2
Lactose, Human and Animal	62,296	60,192	60,821	-2.4	1.0
Whey					
Protein Concentrate					
Human <sup>3</sup>	30,320	27,835	30,162	-0.5	8.4
Animal <sup>3</sup>	4,261	3,864	2,349	-44.9	-39.2
Total <sup>3</sup>	34,581	31,699	32,511	-6.0	2.6
25.0-49.9 Percent <sup>4</sup>	23,786	21,397	21,781	-8.4	1.8
50.0-89.9 Percent <sup>4</sup>	10,795	10,302	10,730	-0.6	4.2
Protein Isolates <sup>5</sup>	2,843	2,981	3,116	9.6	4.5
<b>Manufacturers' Stocks End-of-Month <sup>6</sup></b>					
	<i>1,000 Pounds</i>	<i>1,000 Pounds</i>	<i>1,000 Pounds</i>	<i>Percent</i>	<i>Percent</i>
Dry Whey Products					
Dry Whey, Human	34,946	61,918	56,281	61.1	-9.1
Dry Whey, Animal	1,187	6,617	6,071	411.5	-8.3
Dry Whey, Total	36,133	68,535	62,352	72.6	-9.0
Reduced Lactose and Minerals					
Human and Animal <sup>7</sup>	4,772	12,202	12,772	167.6	4.7
Lactose, Human and Animal	39,221	62,722	56,177	43.2	-10.4
Whey					
Protein Concentrate					
Human <sup>3</sup>	24,892	25,666	26,726	7.4	4.1
Animal <sup>3</sup>	2,503	1,303	972	-61.2	-25.4
Total <sup>3</sup>	27,395	26,969	27,698	1.1	2.7
25.0-49.9 Percent <sup>4</sup>	16,949	18,876	18,396	8.5	-2.5
50.0-89.9 Percent <sup>4</sup>	10,446	8,093	9,302	-11.0	14.9
<b>Manufacturers' Selling Price <sup>8</sup></b>					
	<i>Cents per Pound</i>	<i>Cents per Pound</i>	<i>Cents per Pound</i>	<i>Cents Change</i>	<i>Cents Change</i>
Dry Whey, Animal	33.4	31.7	27.5	-5.9	-4.2

<sup>1</sup> Revised.

<sup>2</sup> Final marketable product only. Does not include quantity used or shipped to another plant for further processing into dry whey or modified whey products. Does not include sweet-type, animal whey.

<sup>3</sup> Whey Protein Concentrate, 25.0 to 89.9 percent.

<sup>4</sup> Whey Protein Concentrate, Human and Animal.

<sup>5</sup> Whey Protein Isolate, 90.0 percent or greater.

<sup>6</sup> Stocks held by manufacturers at all points and in transit.

<sup>7</sup> Reduced lactose and minerals stocks combined to avoid disclosure of individual operations.

<sup>8</sup> Prices for bulk goods, f.o.b. plant. Average monthly prices reported by firms.

**Dairy Products: Production by Product and Month,  
United States, 2006-2007<sup>1</sup>**

Product and Month	By Month			Cumulative		
	2006	2007	Change From 2006	2006	2007	Change From 2006
	<i>1,000 Pounds</i>	<i>1,000 Pounds</i>	<i>Percent</i>	<i>1,000 Pounds</i>	<i>1,000 Pounds</i>	<i>Percent</i>
<b>Total Cheese</b>						
Jan	782,671	825,969	5.5	782,671	825,969	5.5
Feb	720,501	748,496	3.9	1,503,172	1,574,465	4.7
Mar	820,805	837,743	2.1	2,323,977	2,412,208	3.8
Apr	793,585	802,480	1.1	3,117,562	3,214,688	3.1
May	820,034	820,429		3,937,596	4,035,117	2.5
Jun	796,104	790,252	-0.7	4,733,700	4,825,369	1.9
Jul	775,398	795,463	2.6	5,509,098	5,620,832	2.0
Aug	795,133	795,618	0.1	6,304,231	6,416,450	1.8
Sep	788,604	775,601	-1.6	7,092,835	7,192,051	1.4
Oct	812,276	825,330	1.6	7,905,111	8,017,381	1.4
Nov	798,104			8,703,215		
Dec	831,116			9,534,331		
<b>American Cheese</b>						
Jan	325,636	343,095	5.4	325,636	343,095	5.4
Feb	299,035	305,474	2.2	624,671	648,569	3.8
Mar	336,095	338,377	0.7	960,766	986,946	2.7
Apr	337,267	325,744	-3.4	1,298,033	1,312,690	1.1
May	346,162	331,408	-4.3	1,644,195	1,644,098	
Jun	331,375	315,701	-4.7	1,975,570	1,959,799	-0.8
Jul	327,511	322,256	-1.6	2,303,081	2,282,055	-0.9
Aug	318,071	312,183	-1.9	2,621,152	2,594,238	-1.0
Sep	320,115	301,004	-6.0	2,941,267	2,895,242	-1.6
Oct	320,925	324,915	1.2	3,262,192	3,220,157	-1.3
Nov	312,210			3,574,402		
Dec	338,204			3,912,606		
<b>Cheddar Cheese</b>						
Jan	265,842	274,082	3.1	265,842	274,082	3.1
Feb	241,532	248,714	3.0	507,374	522,796	3.0
Mar	267,799	270,069	0.8	775,173	792,865	2.3
Apr	271,722	257,133	-5.4	1,046,895	1,049,998	0.3
May	274,229	265,412	-3.2	1,321,124	1,315,410	-0.4
Jun	263,380	251,466	-4.5	1,584,504	1,566,876	-1.1
Jul	265,953	253,290	-4.8	1,850,457	1,820,166	-1.6
Aug	250,375	240,506	-3.9	2,100,832	2,060,672	-1.9
Sep	254,242	230,982	-9.1	2,355,074	2,291,654	-2.7
Oct	249,425	248,334	-0.4	2,604,499	2,539,988	-2.5
Nov	247,195			2,851,694		
Dec	273,060			3,124,754		

See footnote(s) at end of table.

--continued

**Dairy Products: Production by Product and Month,  
United States, 2006-2007<sup>1</sup> (continued)**

Product and Month	By Month			Cumulative		
	2006	2007	Change From 2006	2006	2007	Change From 2006
	<i>1,000 Pounds</i>	<i>1,000 Pounds</i>	<i>Percent</i>	<i>1,000 Pounds</i>	<i>1,000 Pounds</i>	<i>Percent</i>
<b>Italian Cheese</b>						
Jan	330,843	353,589	6.9	330,843	353,589	6.9
Feb	306,391	319,585	4.3	637,234	673,174	5.6
Mar	348,058	361,191	3.8	985,292	1,034,365	5.0
Apr	331,202	344,811	4.1	1,316,494	1,379,176	4.8
May	337,437	349,263	3.5	1,653,931	1,728,439	4.5
Jun	328,269	337,308	2.8	1,982,200	2,065,747	4.2
Jul	320,586	335,081	4.5	2,302,786	2,400,828	4.3
Aug	333,159	333,629	0.1	2,635,945	2,734,457	3.7
Sep	327,134	330,203	0.9	2,963,079	3,064,660	3.4
Oct	339,721	345,795	1.8	3,302,800	3,410,455	3.3
Nov	330,142			3,632,942		
Dec	355,560			3,988,502		
<b>Mozzarella</b>						
Jan	259,949	279,383	7.5	259,949	279,383	7.5
Feb	240,457	256,343	6.6	500,406	535,726	7.1
Mar	273,367	287,089	5.0	773,773	822,815	6.3
Apr	262,340	276,496	5.4	1,036,113	1,099,311	6.1
May	265,835	278,766	4.9	1,301,948	1,378,077	5.8
Jun	260,874	273,297	4.8	1,562,822	1,651,374	5.7
Jul	255,341	269,764	5.6	1,818,163	1,921,138	5.7
Aug	261,166	264,074	1.1	2,079,329	2,185,212	5.1
Sep	258,736	263,728	1.9	2,338,065	2,448,940	4.7
Oct	266,315	273,692	2.8	2,604,380	2,722,632	4.5
Nov	259,149			2,863,529		
Dec	281,033			3,144,562		
<b>Other Italian</b>						
Jan	70,894	74,206	4.7	70,894	74,206	4.7
Feb	65,934	63,242	-4.1	136,828	137,448	0.5
Mar	74,691	74,102	-0.8	211,519	211,550	
Apr	68,862	68,315	-0.8	280,381	279,865	-0.2
May	71,602	70,497	-1.5	351,983	350,362	-0.5
Jun	67,395	64,011	-5.0	419,378	414,373	-1.2
Jul	65,245	65,317	0.1	484,623	479,690	-1.0
Aug	71,993	69,555	-3.4	556,616	549,245	-1.3
Sep	68,398	66,475	-2.8	625,014	615,720	-1.5
Oct	73,406	72,103	-1.8	698,420	687,823	-1.5
Nov	70,993			769,413		
Dec	74,527			843,940		

See footnote(s) at end of table.

--continued

**Dairy Products: Production by Product and Month,  
United States, 2006-2007 <sup>1</sup> (continued)**

Product and Month	By Month			Cumulative		
	2006	2007	Change From 2006	2006	2007	Change From 2006
	<i>1,000 Pounds</i>	<i>1,000 Pounds</i>	<i>Percent</i>	<i>1,000 Pounds</i>	<i>1,000 Pounds</i>	<i>Percent</i>
<b>Butter</b>						
Jan	149,832	151,030	0.8	149,832	151,030	0.8
Feb	136,840	134,171	-2.0	286,672	285,201	-0.5
Mar	141,714	138,196	-2.5	428,386	423,397	-1.2
Apr	127,681	134,355	5.2	556,067	557,752	0.3
May	128,556	124,417	-3.2	684,623	682,169	-0.4
Jun	101,110	109,719	8.5	785,733	791,888	0.8
Jul	94,729	115,468	21.9	880,462	907,356	3.1
Aug	88,880	109,804	23.5	969,342	1,017,160	4.9
Sep	104,317	111,774	7.1	1,073,659	1,128,934	5.1
Oct	119,133	129,958	9.1	1,192,792	1,258,892	5.5
Nov	118,097			1,310,889		
Dec	137,593			1,448,482		
<b>Nonfat Dry Milk, Human</b>						
Jan	111,278	108,849	-2.2	111,278	108,849	-2.2
Feb	117,998	98,098	-16.9	229,276	206,947	-9.7
Mar	128,867	118,034	-8.4	358,143	324,981	-9.3
Apr	130,613	123,068	-5.8	488,756	448,049	-8.3
May	132,935	115,949	-12.8	621,691	563,998	-9.3
Jun	116,846	119,333	2.1	738,537	683,331	-7.5
Jul	88,594	123,152	39.0	827,131	806,483	-2.5
Aug	73,193	102,999	40.7	900,324	909,482	1.0
Sep	63,278	89,704	41.8	963,602	999,186	3.7
Oct	69,989	98,939	41.4	1,033,591	1,098,125	6.2
Nov	76,914			1,110,505		
Dec	113,567			1,224,072		
<b>Skim Milk Powders <sup>2</sup></b>						
Jan	30,883	10,812	-65.0	30,883	10,812	-65.0
Feb	27,087	11,032	-59.3	57,970	21,844	-62.3
Mar	21,580	10,195	-52.8	79,550	32,039	-59.7
Apr	14,014	15,568	11.1	93,564	47,607	-49.1
May	19,762	12,987	-34.3	113,326	60,594	-46.5
Jun	23,871	16,419	-31.2	137,197	77,013	-43.9
Jul	30,900	19,212	-37.8	168,097	96,225	-42.8
Aug	25,638	17,922	-30.1	193,735	114,147	-41.1
Sep	22,873	14,884	-34.9	216,608	129,031	-40.4
Oct	28,967	21,438	-26.0	245,575	150,469	-38.7
Nov	26,529			272,104		
Dec	16,970			289,074		

See footnote(s) at end of table.

--continued



**Dairy Products: Production by Product and Month,  
United States, 2006-2007<sup>1</sup> (continued)**

Product and Month	By Month			Cumulative		
	2006	2007	Change From 2006	2006	2007	Change From 2006
	<i>1,000 Pounds</i>	<i>1,000 Pounds</i>	<i>Percent</i>	<i>1,000 Pounds</i>	<i>1,000 Pounds</i>	<i>Percent</i>
Dry Whey, Total <sup>3</sup>						
Jan	88,391	96,145	8.8	88,391	96,145	8.8
Feb	89,695	90,232	0.6	178,086	186,377	4.7
Mar	100,953	98,713	-2.2	279,039	285,090	2.2
Apr	95,662	96,818	1.2	374,701	381,908	1.9
May	97,295	99,198	2.0	471,996	481,106	1.9
Jun	89,701	94,628	5.5	561,697	575,734	2.5
Jul	95,226	95,601	0.4	656,923	671,335	2.2
Aug	91,547	95,225	4.0	748,470	766,560	2.4
Sep	86,271	87,382	1.3	834,741	853,942	2.3
Oct	87,434	88,813	1.6	922,175	942,755	2.2
Nov	85,865			1,008,040		
Dec	92,306			1,100,346		
Lactose, Human and Animal						
Jan	64,539	65,064	0.8	64,539	65,064	0.8
Feb	56,311	59,671	6.0	120,850	124,735	3.2
Mar	62,165	64,975	4.5	183,015	189,710	3.7
Apr	63,402	63,083	-0.5	246,417	252,793	2.6
May	66,057	67,145	1.6	312,474	319,938	2.4
Jun	60,027	62,013	3.3	372,501	381,951	2.5
Jul	60,333	64,473	6.9	432,834	446,424	3.1
Aug	64,225	62,813	-2.2	497,059	509,237	2.5
Sep	58,964	60,192	2.1	556,023	569,429	2.4
Oct	62,296	60,821	-2.4	618,319	630,250	1.9
Nov	60,505			678,824		
Dec	59,832			738,656		
Whey Protein Concentrate, Total						
Jan	37,162	33,055	-11.1	37,162	33,055	-11.1
Feb	34,436	29,432	-14.5	71,598	62,487	-12.7
Mar	37,766	35,038	-7.2	109,364	97,525	-10.8
Apr	37,525	33,188	-11.6	146,889	130,713	-11.0
May	37,373	33,436	-10.5	184,262	164,149	-10.9
Jun	36,190	33,672	-7.0	220,452	197,821	-10.3
Jul	35,704	33,342	-6.6	256,156	231,163	-9.8
Aug	35,024	30,883	-11.8	291,180	262,046	-10.0
Sep	34,581	31,699	-8.3	325,761	293,745	-9.8
Oct	34,581	32,511	-6.0	360,342	326,256	-9.5
Nov	33,116			393,458		
Dec	34,266			427,724		

See footnote(s) at end of table.

--continued

**Dairy Products: Production by Product and Month,  
United States, 2006-2007 <sup>1</sup> (continued)**

Product and Month	By Month			Cumulative		
	2006	2007	Change From 2006	2006	2007	Change From 2006
	<i>1,000 Pounds</i>	<i>1,000 Pounds</i>	<i>Percent</i>	<i>1,000 Pounds</i>	<i>1,000 Pounds</i>	<i>Percent</i>
<b>Cream Cottage Cheese</b>						
Jan	29,943	29,227	-2.4	29,943	29,227	-2.4
Feb	29,095	28,326	-2.6	59,038	57,553	-2.5
Mar	32,376	32,027	-1.1	91,414	89,580	-2.0
Apr	28,670	30,465	6.3	120,084	120,045	
May	32,367	32,328	-0.1	152,451	152,373	-0.1
Jun	32,315	30,477	-5.7	184,766	182,850	-1.0
Jul	29,952	30,376	1.4	214,718	213,226	-0.7
Aug	35,692	32,569	-8.7	250,410	245,795	-1.8
Sep	30,412	30,713	1.0	280,822	276,508	-1.5
Oct	30,161	30,154		310,983	306,662	-1.4
Nov	29,538			340,521		
Dec	26,957			367,478		
<b>Lowfat Cottage Cheese</b>						
Jan	34,117	34,556	1.3	34,117	34,556	1.3
Feb	33,186	32,281	-2.7	67,303	66,837	-0.7
Mar	34,771	37,770	8.6	102,074	104,607	2.5
Apr	32,504	34,781	7.0	134,578	139,388	3.6
May	35,874	37,869	5.6	170,452	177,257	4.0
Jun	34,777	37,516	7.9	205,229	214,773	4.7
Jul	34,037	37,110	9.0	239,266	251,883	5.3
Aug	38,861	40,336	3.8	278,127	292,219	5.1
Sep	34,458	35,142	2.0	312,585	327,361	4.7
Oct	33,678	35,716	6.1	346,263	363,077	4.9
Nov	31,775			378,038		
Dec	29,807			407,845		
<b>Sour Cream</b>						
Jan	85,732	90,856	6.0	85,732	90,856	6.0
Feb	80,267	80,054	-0.3	165,999	170,910	3.0
Mar	92,880	90,687	-2.4	258,879	261,597	1.0
Apr	83,097	88,343	6.3	341,976	349,940	2.3
May	94,154	94,848	0.7	436,130	444,788	2.0
Jun	92,565	88,483	-4.4	528,695	533,271	0.9
Jul	87,139	89,001	2.1	615,834	622,272	1.0
Aug	99,020	94,067	-5.0	714,854	716,339	0.2
Sep	87,555	84,814	-3.1	802,409	801,153	-0.2
Oct	101,849	99,711	-2.1	904,258	900,864	-0.4
Nov	113,822			1,018,080		
Dec	103,385			1,121,465		

See footnote(s) at end of table.

--continued

**Dairy Products: Production by Product and Month,  
United States, 2006-2007<sup>1</sup> (continued)**

Product and Month	By Month			Cumulative		
	2006	2007	Change From 2006	2006	2007	Change From 2006
	<i>1,000 Gallons</i>	<i>1,000 Gallons</i>	<i>Percent</i>	<i>1,000 Gallons</i>	<i>1,000 Gallons</i>	<i>Percent</i>
<b>Ice Cream, Regular, Hard</b>						
Jan	65,338	64,840	-0.8	65,338	64,840	-0.8
Feb	65,937	65,530	-0.6	131,275	130,370	-0.7
Mar	82,123	78,818	-4.0	213,398	209,188	-2.0
Apr	79,616	80,631	1.3	293,014	289,819	-1.1
May	84,890	85,254	0.4	377,904	375,073	-0.7
Jun	91,954	89,369	-2.8	469,858	464,442	-1.2
Jul	88,628	85,886	-3.1	558,486	550,328	-1.5
Aug	89,305	82,797	-7.3	647,791	633,125	-2.3
Sep	74,979	69,189	-7.7	722,770	702,314	-2.8
Oct	66,486	69,389	4.4	789,256	771,703	-2.2
Nov	58,922			848,178		
Dec	51,144			899,322		
<b>Ice Cream, Lowfat, Total</b>						
Jan	24,286	26,726	10.0	24,286	26,726	10.0
Feb	24,566	28,053	14.2	48,852	54,779	12.1
Mar	31,845	35,734	12.2	80,697	90,513	12.2
Apr	32,333	37,081	14.7	113,030	127,594	12.9
May	36,336	42,147	16.0	149,366	169,741	13.6
Jun	42,339	43,605	3.0	191,705	213,346	11.3
Jul	37,770	39,814	5.4	229,475	253,160	10.3
Aug	36,448	38,791	6.4	265,923	291,951	9.8
Sep	30,887	30,179	-2.3	296,810	322,130	8.5
Oct	28,645	29,299	2.3	325,455	351,429	8.0
Nov	23,224			348,679		
Dec	23,521			372,200		
<b>Sherbet, Hard</b>						
Jan	3,944	3,311	-16.0	3,944	3,311	-16.0
Feb	4,135	3,854	-6.8	8,079	7,165	-11.3
Mar	4,634	4,771	3.0	12,713	11,936	-6.1
Apr	4,375	5,368	22.7	17,088	17,304	1.3
May	4,662	5,384	15.5	21,750	22,688	4.3
Jun	4,984	5,897	18.3	26,734	28,585	6.9
Jul	4,886	5,264	7.7	31,620	33,849	7.0
Aug	4,830	4,853	0.5	36,450	38,702	6.2
Sep	3,795	4,323	13.9	40,245	43,025	6.9
Oct	3,642	3,976	9.2	43,887	47,001	7.1
Nov	3,079			46,966		
Dec	2,808			49,774		

See footnote(s) at end of table.

--continued

**Dairy Products: Production by Product and Month,  
United States, 2006-2007 <sup>1</sup> (continued)**

Product and Month	By Month			Cumulative		
	2006	2007	Change From 2006	2006	2007	Change From 2006
	<i>1,000 Pounds</i>	<i>1,000 Pounds</i>	<i>Percent</i>	<i>1,000 Pounds</i>	<i>1,000 Pounds</i>	<i>Percent</i>
Yogurt, Plain & Flavored						
Jan	269,591	286,256	6.2	269,591	286,256	6.2
Feb	260,430	285,283	9.5	530,021	571,539	7.8
Mar	307,110	313,746	2.2	837,131	885,285	5.8
Apr	270,181	304,504	12.7	1,107,312	1,189,789	7.4
May	282,100	300,052	6.4	1,389,412	1,489,841	7.2
Jun	290,529	284,764	-2.0	1,679,941	1,774,605	5.6
Jul	266,544	288,479	8.2	1,946,485	2,063,084	6.0
Aug	294,044	309,871	5.4	2,240,529	2,372,955	5.9
Sep	288,769	315,993	9.4	2,529,298	2,688,948	6.3
Oct	273,415	296,678	8.5	2,802,713	2,985,626	6.5
Nov	238,194			3,040,907		
Dec	253,680			3,294,587		
	<i>1,000 Gallons</i>	<i>1,000 Gallons</i>	<i>Percent</i>	<i>1,000 Gallons</i>	<i>1,000 Gallons</i>	<i>Percent</i>
Yogurt, Frozen						
Jan	4,563	4,589	0.6	4,563	4,589	0.6
Feb	4,746	4,151	-12.5	9,309	8,740	-6.1
Mar	6,126	6,524	6.5	15,435	15,264	-1.1
Apr	5,897	6,494	10.1	21,332	21,758	2.0
May	6,636	6,291	-5.2	27,968	28,049	0.3
Jun	6,697	7,098	6.0	34,665	35,147	1.4
Jul	6,368	5,772	-9.4	41,033	40,919	-0.3
Aug	6,877	5,396	-21.5	47,910	46,315	-3.3
Sep	5,756	4,333	-24.7	53,666	50,648	-5.6
Oct	5,296	4,094	-22.7	58,962	54,742	-7.2
Nov	4,408			63,370		
Dec	4,080			67,450		

<sup>1</sup> September 2007 data revised.

<sup>2</sup> Includes protein standardized and blends.

<sup>3</sup> Excludes all modified dry whey products.

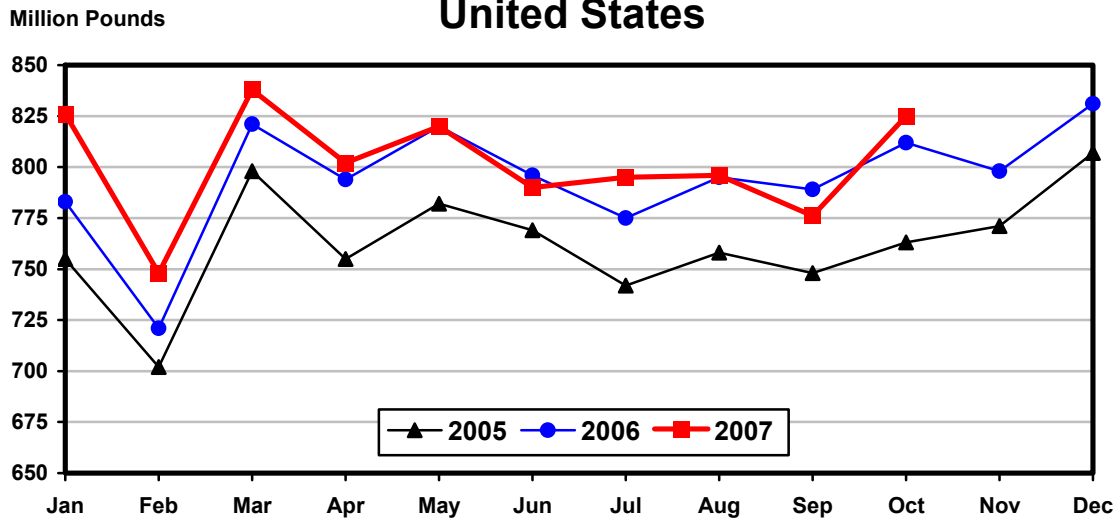
**Total Cheese, Excluding Cottage Cheese: Production by State and United States, October 2006-2007**

State	Oct 2006	Sep <sup>1</sup> 2007	Oct 2007	Change From	
				Oct 2006	Sep 2007
	<i>1,000 Pounds</i>	<i>1,000 Pounds</i>	<i>1,000 Pounds</i>	<i>Percent</i>	<i>Percent</i>
CA	188,562	177,662	193,961	2.9	9.2
ID	70,069	65,646	67,101	-4.2	2.2
IL	6,256	6,534	6,821	9.0	4.4
IA	11,386	12,554	13,078	14.9	4.2
MN	49,519	46,718	47,995	-3.1	2.7
NM	51,941	46,051	52,108	0.3	13.2
NY	63,834	60,237	65,849	3.2	9.3
OH	17,224	15,179	16,516	-4.1	8.8
PA	29,478	32,066	33,957	15.2	5.9
SD	16,708	15,635	16,327	-2.3	4.4
UT	9,243	9,431	9,313	0.8	-1.3
WI	207,924	201,608	208,456	0.3	3.4
Oth Sts <sup>2</sup>	90,132	86,280	93,848	4.1	8.8
US	812,276	775,601	825,330	1.6	6.4
Atlantic	112,184	109,374	118,231	5.4	8.1
Central	337,055	325,415	342,539	1.6	5.3
West	363,037	340,812	364,560	0.4	7.0

<sup>1</sup> Revised.

<sup>2</sup> States not shown when fewer than 3 plants reported or individual plant operations could be disclosed. Percent change shown only when comparable States are included in the calculation.

**Total Cheese Production United States**



**American Cheese: Production by State and United States, October 2006-2007**

State	Oct 2006	Sep <sup>1</sup> 2007	Oct 2007	Change From	
				Oct 2006	Sep 2007
	<i>1,000 Pounds</i>	<i>1,000 Pounds</i>	<i>1,000 Pounds</i>	<i>Percent</i>	<i>Percent</i>
CA	67,933	59,181	66,837	-1.6	12.9
ID	49,874	51,679	53,063	6.4	2.7
MN	47,074	43,502	43,849	-6.9	0.8
OH	2,925	1,881	2,161	-26.1	14.9
OR	10,089	8,832	9,843	-2.4	11.4
WI	62,958	60,069	61,340	-2.6	2.1
Oth Sts <sup>2</sup>	80,072	75,860	87,822	9.7	15.8
US	320,925	301,004	324,915	1.2	7.9
Atlantic	12,636	11,478	12,934	2.4	12.7
Central	133,189	126,557	135,372	1.6	7.0
West	175,100	162,969	176,609	0.9	8.4

<sup>1</sup> Revised.

<sup>2</sup> States not shown when fewer than 3 plants reported or individual plant operations could be disclosed. Percent change shown only when comparable States are included in the calculation.

**Cheddar Cheese: Production by State and United States, October 2006-2007**

State	Oct 2006	Sep <sup>1</sup> 2007	Oct 2007	Change From	
				Oct 2006	Sep 2007
	<i>1,000 Pounds</i>	<i>1,000 Pounds</i>	<i>1,000 Pounds</i>	<i>Percent</i>	<i>Percent</i>
CA	36,721	33,299	36,558	-0.4	9.8
ID	45,770	41,647	42,589	-6.9	2.3
MN	43,196	39,156	40,192	-7.0	2.6
OH	2,036	1,676	1,898	-6.8	13.2
WI	49,374	48,329	49,650	0.6	2.7
Oth Sts <sup>2</sup>	72,328	66,875	77,447	7.1	15.8
US	249,425	230,982	248,334	-0.4	7.5
Atlantic	12,110	10,796	12,109		12.2
Central	108,392	105,430	112,761	4.0	7.0
West	128,923	114,756	123,464	-4.2	7.6

<sup>1</sup> Revised.

<sup>2</sup> States not shown when fewer than 3 plants reported or individual plant operations could be disclosed. Percent change shown only when comparable States are included in the calculation.

**Italian Cheese, Total: Production by State and United States, October 2006-2007**

State	Oct 2006	Sep <sup>1</sup> 2007	Oct 2007	Change From	
				Oct 2006	Sep 2007
	<i>1,000 Pounds</i>	<i>1,000 Pounds</i>	<i>1,000 Pounds</i>	<i>Percent</i>	<i>Percent</i>
CA	103,017	102,057	107,695	4.5	5.5
ID	12,132	11,779	11,649	-4.0	-1.1
NY	34,429	30,913	33,483	-2.7	8.3
PA	17,969	19,449	20,234	12.6	4.0
SD	9,595	7,933	8,455	-11.9	6.6
WI	101,425	96,635	98,953	-2.4	2.4
Oth Sts <sup>2</sup>	61,154	61,437	65,326	6.8	6.3
US	339,721	330,203	345,795	1.8	4.7
Atlantic	60,974	57,954	61,188	0.4	5.6
Central	128,970	123,499	127,945	-0.8	3.6
West	149,777	148,750	156,662	4.6	5.3

<sup>1</sup> Revised.

<sup>2</sup> States not shown when fewer than 3 plants reported or individual plant operations could be disclosed. Percent change shown only when comparable States are included in the calculation.

**Mozzarella Cheese: Production by State and United States, October 2006-2007**

State	Oct 2006	Sep <sup>1</sup> 2007	Oct 2007	Change From	
				Oct 2006	Sep 2007
	<i>1,000 Pounds</i>	<i>1,000 Pounds</i>	<i>1,000 Pounds</i>	<i>Percent</i>	<i>Percent</i>
CA	91,624	90,753	96,570	5.4	6.4
ID	10,497	10,098	10,045	-4.3	-0.5
NY	15,700	16,265	15,325	-2.4	-5.8
PA	15,525	17,268	17,593	13.3	1.9
WI	72,326	70,843	72,000	-0.5	1.6
Oth Sts <sup>2</sup>	60,643	58,501	62,159	2.5	6.3
US	266,315	263,728	273,692	2.8	3.8
Atlantic	37,257	37,951	37,903	1.7	-0.1
Central	93,320	90,912	92,921	-0.4	2.2
West	135,738	134,865	142,868	5.3	5.9

<sup>1</sup> Revised.

<sup>2</sup> States not shown when fewer than 3 plants reported or individual plant operations could be disclosed. Percent change shown only when comparable States are included in the calculation.

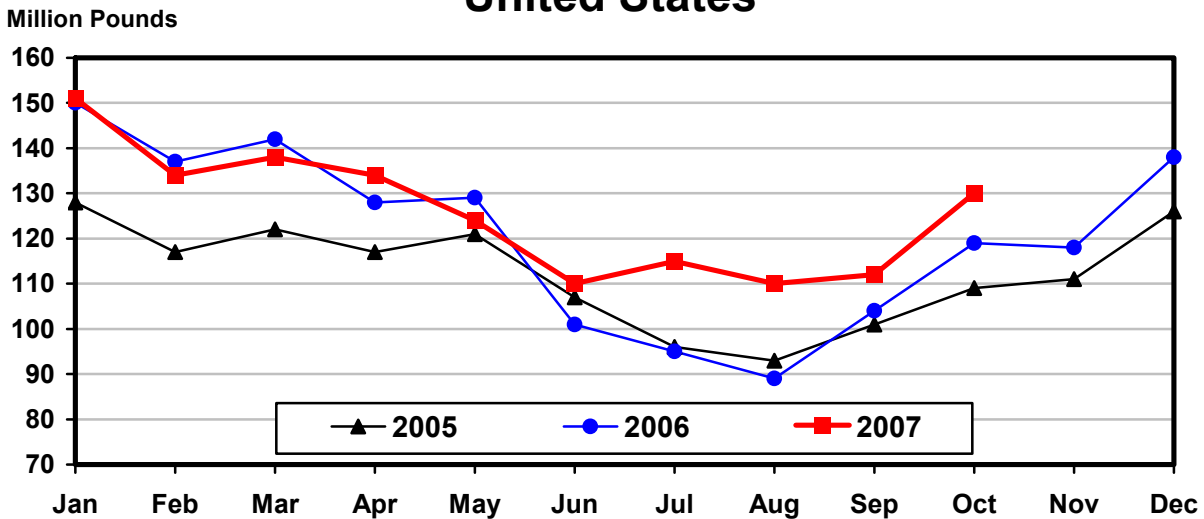
**Butter: Production by State and United States, October 2006-2007**

State	Oct 2006	Sep <sup>1</sup> 2007	Oct 2007	Change From	
				Oct 2006	Sep 2007
	<i>1,000 Pounds</i>	<i>1,000 Pounds</i>	<i>1,000 Pounds</i>	<i>Percent</i>	<i>Percent</i>
CA	38,368	39,257	45,409	18.4	15.7
NY	1,060	785	1,038	-2.1	32.2
PA	5,613	3,885	5,736	2.2	47.6
WI	31,718	26,680	33,900	6.9	27.1
Oth Sts <sup>2</sup>	42,374	41,167	43,875	3.5	6.6
US	119,133	111,774	129,958	9.1	16.3
Atlantic	8,754	6,401	8,981	2.6	40.3
Central	53,817	45,932	54,799	1.8	19.3
West	56,562	59,441	66,178	17.0	11.3

<sup>1</sup> Revised.

<sup>2</sup> States not shown when fewer than 3 plants reported or individual plant operations could be disclosed. Percent change shown only when comparable States are included in the calculation.

## Total Butter Production United States





**Nonfat Dry Milk, Human: Production by State  
and United States, October 2006-2007**

State	Oct 2006	Sep <sup>1</sup> 2007	Oct 2007	Change From	
				Oct 2006	Sep 2007
	<i>1,000 Pounds</i>	<i>1,000 Pounds</i>	<i>1,000 Pounds</i>	<i>Percent</i>	<i>Percent</i>
CA	44,603	54,457	61,806	38.6	13.5
Oth Sts <sup>2</sup>	25,386	35,247	37,133	46.3	5.4
US	69,989	89,704	98,939	41.4	10.3
Atlantic	2,155	7,198	8,122	276.9	12.8
Central	5,385	10,759	8,444	56.8	-21.5
West	62,449	71,747	82,373	31.9	14.8

<sup>1</sup> Revised.

<sup>2</sup> States not shown when fewer than 3 plants reported or individual plant operations could be disclosed. Percent change shown only when comparable States are included in the calculation.

**Dry Whey, Human: Production by State  
and United States, October 2006-2007**

State	Oct 2006	Sep <sup>1</sup> 2007	Oct 2007	Change From	
				Oct 2006	Sep 2007
	<i>1,000 Pounds</i>	<i>1,000 Pounds</i>	<i>1,000 Pounds</i>	<i>Percent</i>	<i>Percent</i>
CA	9,650	6,456	7,720	-20.0	19.6
MN	5,170	4,231	2,923	-43.5	-30.9
NY	10,963	10,272	10,629	-3.0	3.5
WI	22,959	23,060	24,800	8.0	7.5
Oth Sts <sup>2</sup>	35,518	38,093	38,616	8.7	1.4
US	84,260	82,112	84,688	0.5	3.1
Atlantic	18,449	18,527	18,743	1.6	1.2
Central	37,102	37,367	38,244	3.1	2.3
West	28,709	26,218	27,701	-3.5	5.7

<sup>1</sup> Revised.

<sup>2</sup> States not shown when fewer than 3 plants reported or individual plant operations could be disclosed. Percent change shown only when comparable States are included in the calculation.

**Ice Cream, Regular, Hard: Production by State and United States,  
October 2006-2007**

State	Oct 2006	Sep <sup>1</sup> 2007	Oct 2007	Change From	
				Oct 2006	Sep 2007
	<i>1,000 Gallons</i>	<i>1,000 Gallons</i>	<i>1,000 Gallons</i>	<i>Percent</i>	<i>Percent</i>
CA	9,221	9,285	10,618	15.2	14.4
FL	1,333	1,410	1,450	8.8	2.8
IN	7,402	6,116	6,055	-18.2	-1.0
MA	3,602	3,094	3,692	2.5	19.3
MN	3,321	2,775	3,018	-9.1	8.8
MO	2,096	2,114	3,076	46.8	45.5
NY	2,146	2,019	2,506	16.8	24.1
NC	1,105	1,034	927	-16.1	-10.3
OH	1,797	2,035	2,061	14.7	1.3
OR	760	808	925	21.7	14.5
PA	3,035	2,600	2,847	-6.2	9.5
TN	1,380	1,282	1,354	-1.9	5.6
TX	4,158	5,421	4,709	13.3	-13.1
UT	2,050	1,978	2,062	0.6	4.2
Oth Sts <sup>2</sup>	23,080	27,218	24,089	4.4	-11.5
US	66,486	69,189	69,389	4.4	0.3
N Atl	12,227	11,437	11,622	-4.9	1.6
S Atl	6,374	5,708	5,030	-21.1	-11.9
E N Cen	14,074	13,384	13,439	-4.5	0.4
W N Cen	10,215	13,674	13,851	35.6	1.3
S Cen	9,274	10,275	9,580	3.3	-6.8
West	14,322	14,711	15,867	10.8	7.9

<sup>1</sup> Revised.

<sup>2</sup> States not shown when fewer than 3 plants reported or individual plant operations could be disclosed. Percent change shown only when comparable States are included in the calculation.

**Canned Milk and Dry Milk Products: Manufacturers' Shipments,  
and Stocks, October, 2006-2007**

Product	Oct 2006	Sep 2007 <sup>1</sup>	Oct 2007	Change From	
				Oct 2006	Sep 2007
<b>Manufacturers' Shipments<sup>2</sup></b>					
	<i>1,000 Pounds</i>	<i>1,000 Pounds</i>	<i>1,000 Pounds</i>	<i>Percent</i>	<i>Percent</i>
Nonfat Dry Milk, Human	67,273	98,635	98,112	45.8	-0.5
<b>Manufacturers' Stocks End-of-Month<sup>3</sup></b>					
	<i>1,000 Pounds</i>	<i>1,000 Pounds</i>	<i>1,000 Pounds</i>	<i>Percent</i>	<i>Percent</i>
Canned Evaporated and Condensed Whole Milk	58,785	68,134	52,129	-11.3	-23.5
Nonfat Dry Milk, Human	35,011	120,035	120,892	245.3	0.7
Dry Buttermilk, Total	4,335	11,253	12,121	179.6	7.7

<sup>1</sup> Revised.

<sup>2</sup> For dry products, shipments of bulk goods only.

<sup>3</sup> Stocks held by manufacturers at all points and in transit.

**Procedures and Reliability:** Estimates included in this report are based on data provided each month by manufacturers of these products. In 32 States, the State Departments of Agriculture assist in collection of data, which eliminates duplicate reporting and reduces respondent burden. Data are collected by mail, personal and telephone interviews following the close of each month. There were 1,080 manufacturers that made one or more products in 2006. Each month, reports are generally received from all dairy plants in States with small numbers of plants. In States with large numbers of plants, survey procedures are designed to obtain monthly reports from all large plants and from a sample of small plants. Monthly estimates are based upon returns from about 70 percent of the plants which account for 70 to 90 percent of the total production of major dairy products.

**Revision Policy:** Monthly estimates are subject to revision the month following the preliminary estimates. Annual estimates are published in the "**Dairy Products**" report published each April which includes any revisions made to current and previous year. An attempt is made to get information from all plants for preparing these estimates

### Information Contacts

Listed below are the commodity specialists in the Livestock Branch of the National Agricultural Statistics Service to contact for additional information.

Dan Kerestes, Chief, Livestock Branch ..... (202) 720-3570

#### Livestock Section

Shawn Clark, Head, Livestock Section ..... (202) 720-3570  
 Bruce Boess - Hogs and Pigs ..... (202) 720-3106  
 Vacant - Dairy Products ..... (202) 690-3236  
 Jason Hardegree - Milk Production and Milk Cows ..... (202) 720-3278  
 Scott Hollis - Sheep & Lambs, Goats & Kids ..... (202) 720-4751  
 Mike Miller - Cattle, Cattle on Feed ..... (202) 720-3040  
 Benita Hodge - Livestock Slaughter ..... (515) 284-4340  
 Joe Gaynor - Dairy Products Prices ..... (202) 690-2168

## ACCESS TO REPORTS!!

---

For your convenience, there are several ways to obtain NASS reports, data products, and services:

### INTERNET ACCESS

All NASS reports are available free of charge on the worldwide Internet. For access, connect to the Internet and go to the NASS Home Page at: [www.nass.usda.gov](http://www.nass.usda.gov).

### E-MAIL SUBSCRIPTION

All NASS reports are available by subscription free of charge direct to your e-mail address. Starting with the NASS Home Page at [www.nass.usda.gov](http://www.nass.usda.gov), under the right navigation, *Receive reports by Email*, click on **National** or **State**. Follow the instructions on the screen.

-----

### PRINTED REPORTS OR DATA PRODUCTS

**CALL OUR TOLL-FREE ORDER DESK: 800-999-6779 (U.S. and Canada)**  
**Other areas, please call 703-605-6220      FAX: 703-605-6900**  
**(Visa, MasterCard, check, or money order acceptable for payment.)**

-----

### ASSISTANCE

For **assistance** with general agricultural statistics or further information about NASS or its products or services, contact the **Agricultural Statistics Hotline** at **800-727-9540**, 7:30 a.m. to 4:00 p.m. ET, or e-mail: [nass@nass.usda.gov](mailto:nass@nass.usda.gov).

The U.S. Department of Agriculture (USDA) prohibits discrimination in all its programs and activities on the basis of race, color, national origin, age, disability, and where applicable, sex, marital status, familial status, parental status, religion, sexual orientation, genetic information, political beliefs, reprisal, or because all or a part of an individual's income is derived from any public assistance program. (Not all prohibited bases apply to all programs.) Persons with disabilities who require alternative means for communication of program information (Braille, large print, audiotape, etc.) should contact USDA's TARGET Center at (202) 720-2600 (voice and TDD).

To file a complaint of discrimination, write to USDA, Director, Office of Civil Rights, 1400 Independence Avenue, S.W., Washington, D.C. 20250-9410, or call (800) 795-3272 (voice) or (202) 720-6382 (TDD). USDA is an equal opportunity provider and employer.