
Released January 4, 2008, by the National Agricultural Statistics Service (NASS), Agricultural Statistics Board, U.S. Department of Agriculture. For information on *Dairy Products* call Shawn Clark at (202) 690-2424, office hours 7:30 a.m. to 4:00 p.m. ET.

November 2007 Highlights

Total cheese output (excluding cottage cheese) was 808 million pounds, 1.2 percent above November 2006 but 1.9 percent below October 2007.

Italian type cheese production totaled 343 million pounds, 4.0 percent above November 2006 but 1.3 percent below October 2007.

American type cheese production totaled 323 million pounds, 3.5 percent above November 2006 and 0.7 percent above October 2007.

Butter production was 132 million pounds, 11.7 percent above November 2006 and 2.1 percent above October 2007.

Dry Milk Powders: (comparisons with November 2006)

Nonfat dry milk, human --- 98.4 million pounds, up 27.9 percent.

Skim milk powders --- 19.7 million pounds, down 25.8 percent.

Whey products: (comparisons with November 2006)

Dry whey, total --- 93.6 million pounds, up 9.0 percent.

Lactose, human and animal --- 58.8 million pounds, down 2.8 percent.

Whey protein concentrate, total --- 32.2 million pounds, down 2.6 percent.

Frozen products: (comparisons with November 2006)

Ice cream, Regular (hard) --- 56.4 million gallons, down 4.3 percent.

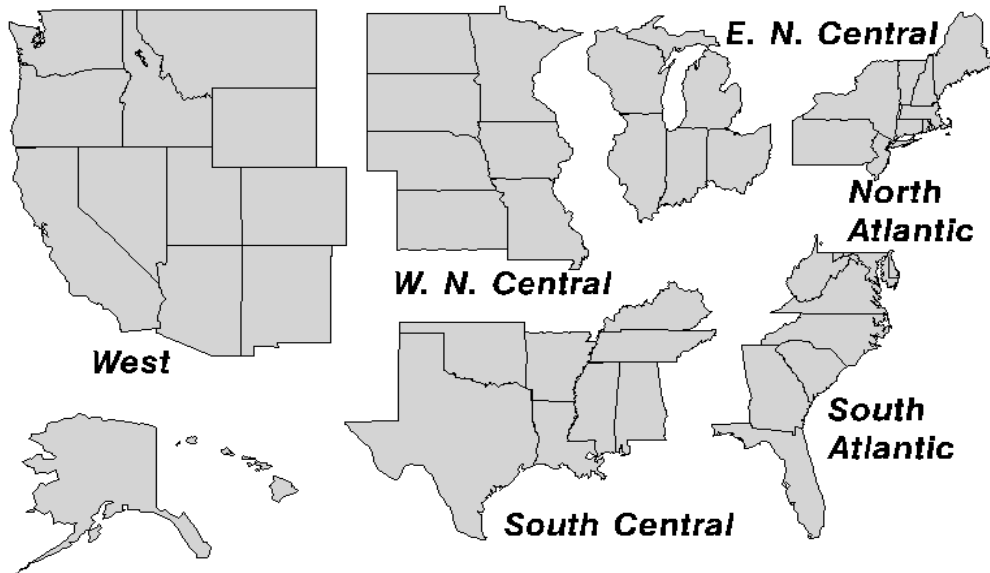
Ice cream, Lowfat (total) --- 24.2 million gallons, up 4.2 percent.

Sherbet (hard) --- 3.37 million gallons, up 9.5 percent.

Frozen Yogurt (total) --- 3.59 million gallons, down 18.6 percent.

U. S. Geographic Regions Dairy Products

If we are not able to publish a region for confidentiality reasons, it will be combined with other regions when possible. For example, if North Atlantic can not be published, then it will be combined with South Atlantic to publish Atlantic. The West North Central and East North Central will be combined, if necessary, to form North Central. In the event that neither could be published, they may be combined with South Central to publish Central. Some tables will have only limited regions shown, therefore the regions may not add to the United States total.



Contents

Page

Dairy Products: Production by Product, United States	1
Whey and Modified Whey Products: Production, Stocks, and Prices, United States.....	2
Dairy Products: Production by Product and Month, United States.....	3
Select Commodities by State and United States	10
Canned Milk and Dry Milk Products: Manufacturer's Shipments, Stocks, and Selling Prices.....	15
Procedures and Reliability	16
Information Contacts	16

**Dairy Products: Production by Product,
United States, November, 2006-2007**

Product	Nov 2006	Oct 2007 ¹	Nov 2007	Change From	
				Nov 2006	Oct 2007
	<i>1,000 Pounds</i>	<i>1,000 Pounds</i>	<i>1,000 Pounds</i>	<i>Percent</i>	<i>Percent</i>
Butter	118,097	129,225	131,915	11.7	2.1
Cheese					
American Types ²	312,210	320,798	323,086	3.5	0.7
Cheddar	247,195	244,639	252,666	2.2	3.3
Swiss	25,159	26,246	25,492	1.3	-2.9
Brick and Muenster	8,824	10,763	8,988	1.9	-16.5
Cream and Neufchatel	78,955	77,553	68,319	-13.5	-11.9
Hispanic	15,003	17,091	15,477	3.2	-9.4
Mozzarella	259,149	274,991	271,197	4.6	-1.4
Other Italian Types	70,993	72,706	72,095	1.6	-0.8
Total Italian Types	330,142	347,697	343,292	4.0	-1.3
All Other Types	27,811	23,722	23,313	-16.2	-1.7
Total	798,104	823,870	807,967	1.2	-1.9
Cottage Cheese, Curd ³	35,916	40,011	35,200	-2.0	-12.0
Cottage Cheese, Cream ⁴	29,538	30,000	27,110	-8.2	-9.6
Cottage Cheese, Lowfat ⁵	31,775	37,171	32,770	3.1	-11.8
Canned Evaporated and Condensed Whole Milk	35,062	39,519	34,493	-1.6	-12.7
Dry Whole Milk	3,102	1,678	2,100	-32.3	25.1
Nonfat Dry Milk, Human	76,914	98,694	98,364	27.9	-0.3
Skim Milk Powders ⁶	26,529	21,438	19,697	-25.8	-8.1
Dry Skim Milk, Animal	357	427	358	0.3	-16.2
Dry Buttermilk	4,848	6,629	7,186	48.2	8.4
Sour Cream	113,822	100,356	110,610	-2.8	10.2
Yogurt, Plain & Flavored	238,194	296,585	264,217	10.9	-10.9
	<i>1,000 Gallons</i>	<i>1,000 Gallons</i>	<i>1,000 Gallons</i>	<i>Percent</i>	<i>Percent</i>
Frozen Products					
Ice Cream, Regular, Hard	58,922	69,435	56,400	-4.3	-18.8
Ice Cream, Lowfat, Hard	7,985	11,949	9,582	20.0	-19.8
Ice Cream, Lowfat, Soft	15,239	17,356	14,626	-4.0	-15.7
Ice Cream, Lowfat, Total	23,224	29,305	24,208	4.2	-17.4
Ice Cream, Nonfat, Hard	784	936	826	5.4	-11.8
Sherbet, Hard	3,079	4,007	3,372	9.5	-15.8
Water and Juice Ices	2,851	4,498	3,059	7.3	-32.0
Frozen Yogurt, Total	4,408	4,085	3,589	-18.6	-12.1
Regular & Lowfat, Hard	1,291	1,596	1,640	27.0	2.8
Nonfat, Hard	563	476	512	-9.1	7.6
Other Frozen Dairy Products	735	1,078	953	29.7	-11.6
Mix for Frozen Products					
Ice Cream Mix	32,473	37,422	32,250	-0.7	-13.8
Ice Cream, Lowfat, Mix	13,360	16,682	13,801	3.3	-17.3
Ice Cream, Nonfat, Mix	520	518	458	-11.9	-11.6
Sherbet Mix	2,269	2,492	2,081	-8.3	-16.5
Yogurt Mix	2,601	2,476	2,175	-16.4	-12.2

¹ Revised.

² Includes Cheddar, Colby, Monterey, and Jack.

³ Mostly used for processing into cream or lowfat cottage cheese.

⁴ Fat content 4 percent or more.

⁵ Fat content less than 4 percent.

⁶ Includes protein standardized and blends.

**Whey and Modified Whey Products: Production, Stocks,
and Prices, United States, November, 2006-2007**

Product	Nov 2006	Oct 2007 ¹	Nov 2007	Change From	
				Nov 2006	Oct 2007
Production					
	<i>1,000 Pounds</i>	<i>1,000 Pounds</i>	<i>1,000 Pounds</i>	<i>Percent</i>	<i>Percent</i>
Condensed Whey, Solids Content ²					
Sweet-Type, Human	8,249	9,853	9,128	10.7	-7.4
Dry Whey Products					
Dry Whey, Human	81,645	84,629	88,092	7.9	4.1
Dry Whey, Animal	4,220	4,111	5,469	29.6	33.0
Dry Whey, Total	85,865	88,740	93,561	9.0	5.4
Reduced Lactose and Minerals					
Human Food	3,265	3,749	3,374	3.3	-10.0
Animal Feed	3,937	4,611	4,709	19.6	2.1
Lactose, Human and Animal	60,505	60,805	58,816	-2.8	-3.3
Whey					
Protein Concentrate					
Human ³	29,035	30,162	30,228	4.1	0.2
Animal ³	4,081	2,349	2,021	-50.5	-14.0
Total ³	33,116	32,511	32,249	-2.6	-0.8
25.0-49.9 Percent ⁴	22,854	21,781	20,817	-8.9	-4.4
50.0-89.9 Percent ⁴	10,262	10,730	11,432	11.4	6.5
Protein Isolates ⁵	3,057	3,116	3,128	2.3	0.4
Manufacturers' Stocks End-of-Month ⁶					
	<i>1,000 Pounds</i>	<i>1,000 Pounds</i>	<i>1,000 Pounds</i>	<i>Percent</i>	<i>Percent</i>
Dry Whey Products					
Dry Whey, Human	34,852	56,261	52,628	51.0	-6.5
Dry Whey, Animal	1,155	5,946	5,650	389.2	-5.0
Dry Whey, Total	36,007	62,207	58,278	61.9	-6.3
Reduced Lactose and Minerals					
Human and Animal ⁷	4,338	12,521	12,605	190.6	0.7
Lactose, Human and Animal	38,442	56,539	62,195	61.8	10.0
Whey					
Protein Concentrate					
Human ³	25,504	26,842	26,056	2.2	-2.9
Animal ³	2,265	972	675	-70.2	-30.6
Total ³	27,769	27,814	26,731	-3.7	-3.9
25.0-49.9 Percent ⁴	17,781	18,512	17,437	-1.9	-5.8
50.0-89.9 Percent ⁴	9,988	9,302	9,294	-6.9	-0.1
Manufacturers' Selling Price ⁸					
	<i>Cents per Pound</i>	<i>Cents per Pound</i>	<i>Cents per Pound</i>	<i>Cents Change</i>	<i>Cents Change</i>
Dry Whey, Animal	35.4	27.9	31.3	-4.1	3.4

¹ Revised.

² Final marketable product only. Does not include quantity used or shipped to another plant for further processing into dry whey or modified whey products. Does not include sweet-type, animal whey.

³ Whey Protein Concentrate, 25.0 to 89.9 percent.

⁴ Whey Protein Concentrate, Human and Animal.

⁵ Whey Protein Isolate, 90.0 percent or greater.

⁶ Stocks held by manufacturers at all points and in transit.

⁷ Reduced lactose and minerals stocks combined to avoid disclosure of individual operations.

⁸ Prices for bulk goods, f.o.b. plant. Average monthly prices reported by firms.

**Dairy Products: Production by Product and Month,
United States, 2006-2007¹**

Product and Month	By Month			Cumulative		
	2006	2007	Change From 2006	2006	2007	Change From 2006
	<i>1,000 Pounds</i>	<i>1,000 Pounds</i>	<i>Percent</i>	<i>1,000 Pounds</i>	<i>1,000 Pounds</i>	<i>Percent</i>
Total Cheese						
Jan	782,671	825,969	5.5	782,671	825,969	5.5
Feb	720,501	748,496	3.9	1,503,172	1,574,465	4.7
Mar	820,805	837,743	2.1	2,323,977	2,412,208	3.8
Apr	793,585	802,480	1.1	3,117,562	3,214,688	3.1
May	820,034	820,429		3,937,596	4,035,117	2.5
Jun	796,104	790,252	-0.7	4,733,700	4,825,369	1.9
Jul	775,398	795,463	2.6	5,509,098	5,620,832	2.0
Aug	795,133	795,618	0.1	6,304,231	6,416,450	1.8
Sep	788,604	775,601	-1.6	7,092,835	7,192,051	1.4
Oct	812,276	823,870	1.4	7,905,111	8,015,921	1.4
Nov	798,104	807,967	1.2	8,703,215	8,823,888	1.4
Dec	831,116			9,534,331		
American Cheese						
Jan	325,636	343,095	5.4	325,636	343,095	5.4
Feb	299,035	305,474	2.2	624,671	648,569	3.8
Mar	336,095	338,377	0.7	960,766	986,946	2.7
Apr	337,267	325,744	-3.4	1,298,033	1,312,690	1.1
May	346,162	331,408	-4.3	1,644,195	1,644,098	
Jun	331,375	315,701	-4.7	1,975,570	1,959,799	-0.8
Jul	327,511	322,256	-1.6	2,303,081	2,282,055	-0.9
Aug	318,071	312,183	-1.9	2,621,152	2,594,238	-1.0
Sep	320,115	301,004	-6.0	2,941,267	2,895,242	-1.6
Oct	320,925	320,798		3,262,192	3,216,040	-1.4
Nov	312,210	323,086	3.5	3,574,402	3,539,126	-1.0
Dec	338,204			3,912,606		
Cheddar Cheese						
Jan	265,842	274,082	3.1	265,842	274,082	3.1
Feb	241,532	248,714	3.0	507,374	522,796	3.0
Mar	267,799	270,069	0.8	775,173	792,865	2.3
Apr	271,722	257,133	-5.4	1,046,895	1,049,998	0.3
May	274,229	265,412	-3.2	1,321,124	1,315,410	-0.4
Jun	263,380	251,466	-4.5	1,584,504	1,566,876	-1.1
Jul	265,953	253,290	-4.8	1,850,457	1,820,166	-1.6
Aug	250,375	240,506	-3.9	2,100,832	2,060,672	-1.9
Sep	254,242	230,982	-9.1	2,355,074	2,291,654	-2.7
Oct	249,425	244,639	-1.9	2,604,499	2,536,293	-2.6
Nov	247,195	252,666	2.2	2,851,694	2,788,959	-2.2
Dec	273,060			3,124,754		

See footnote(s) at end of table.

--continued

**Dairy Products: Production by Product and Month,
United States, 2006-2007¹ (continued)**

Product and Month	By Month			Cumulative		
	2006	2007	Change From 2006	2006	2007	Change From 2006
	<i>1,000 Pounds</i>	<i>1,000 Pounds</i>	<i>Percent</i>	<i>1,000 Pounds</i>	<i>1,000 Pounds</i>	<i>Percent</i>
Italian Cheese						
Jan	330,843	353,589	6.9	330,843	353,589	6.9
Feb	306,391	319,585	4.3	637,234	673,174	5.6
Mar	348,058	361,191	3.8	985,292	1,034,365	5.0
Apr	331,202	344,811	4.1	1,316,494	1,379,176	4.8
May	337,437	349,263	3.5	1,653,931	1,728,439	4.5
Jun	328,269	337,308	2.8	1,982,200	2,065,747	4.2
Jul	320,586	335,081	4.5	2,302,786	2,400,828	4.3
Aug	333,159	333,629	0.1	2,635,945	2,734,457	3.7
Sep	327,134	330,203	0.9	2,963,079	3,064,660	3.4
Oct	339,721	347,697	2.3	3,302,800	3,412,357	3.3
Nov	330,142	343,292	4.0	3,632,942	3,755,649	3.4
Dec	355,560			3,988,502		
Mozzarella						
Jan	259,949	279,383	7.5	259,949	279,383	7.5
Feb	240,457	256,343	6.6	500,406	535,726	7.1
Mar	273,367	287,089	5.0	773,773	822,815	6.3
Apr	262,340	276,496	5.4	1,036,113	1,099,311	6.1
May	265,835	278,766	4.9	1,301,948	1,378,077	5.8
Jun	260,874	273,297	4.8	1,562,822	1,651,374	5.7
Jul	255,341	269,764	5.6	1,818,163	1,921,138	5.7
Aug	261,166	264,074	1.1	2,079,329	2,185,212	5.1
Sep	258,736	263,728	1.9	2,338,065	2,448,940	4.7
Oct	266,315	274,991	3.3	2,604,380	2,723,931	4.6
Nov	259,149	271,197	4.6	2,863,529	2,995,128	4.6
Dec	281,033			3,144,562		
Other Italian						
Jan	70,894	74,206	4.7	70,894	74,206	4.7
Feb	65,934	63,242	-4.1	136,828	137,448	0.5
Mar	74,691	74,102	-0.8	211,519	211,550	
Apr	68,862	68,315	-0.8	280,381	279,865	-0.2
May	71,602	70,497	-1.5	351,983	350,362	-0.5
Jun	67,395	64,011	-5.0	419,378	414,373	-1.2
Jul	65,245	65,317	0.1	484,623	479,690	-1.0
Aug	71,993	69,555	-3.4	556,616	549,245	-1.3
Sep	68,398	66,475	-2.8	625,014	615,720	-1.5
Oct	73,406	72,706	-1.0	698,420	688,426	-1.4
Nov	70,993	72,095	1.6	769,413	760,521	-1.2
Dec	74,527			843,940		

See footnote(s) at end of table.

--continued

**Dairy Products: Production by Product and Month,
United States, 2006-2007 ¹ (continued)**

Product and Month	By Month			Cumulative		
	2006	2007	Change From 2006	2006	2007	Change From 2006
	<i>1,000 Pounds</i>	<i>1,000 Pounds</i>	<i>Percent</i>	<i>1,000 Pounds</i>	<i>1,000 Pounds</i>	<i>Percent</i>
Butter						
Jan	149,832	151,030	0.8	149,832	151,030	0.8
Feb	136,840	134,171	-2.0	286,672	285,201	-0.5
Mar	141,714	138,196	-2.5	428,386	423,397	-1.2
Apr	127,681	134,355	5.2	556,067	557,752	0.3
May	128,556	124,417	-3.2	684,623	682,169	-0.4
Jun	101,110	109,719	8.5	785,733	791,888	0.8
Jul	94,729	115,468	21.9	880,462	907,356	3.1
Aug	88,880	109,804	23.5	969,342	1,017,160	4.9
Sep	104,317	111,774	7.1	1,073,659	1,128,934	5.1
Oct	119,133	129,225	8.5	1,192,792	1,258,159	5.5
Nov	118,097	131,915	11.7	1,310,889	1,390,074	6.0
Dec	137,593			1,448,482		
Nonfat Dry Milk, Human						
Jan	111,278	108,849	-2.2	111,278	108,849	-2.2
Feb	117,998	98,098	-16.9	229,276	206,947	-9.7
Mar	128,867	118,034	-8.4	358,143	324,981	-9.3
Apr	130,613	123,068	-5.8	488,756	448,049	-8.3
May	132,935	115,949	-12.8	621,691	563,998	-9.3
Jun	116,846	119,333	2.1	738,537	683,331	-7.5
Jul	88,594	123,152	39.0	827,131	806,483	-2.5
Aug	73,193	102,999	40.7	900,324	909,482	1.0
Sep	63,278	89,704	41.8	963,602	999,186	3.7
Oct	69,989	98,694	41.0	1,033,591	1,097,880	6.2
Nov	76,914	98,364	27.9	1,110,505	1,196,244	7.7
Dec	113,567			1,224,072		
Skim Milk Powders ²						
Jan	30,883	10,812	-65.0	30,883	10,812	-65.0
Feb	27,087	11,032	-59.3	57,970	21,844	-62.3
Mar	21,580	10,195	-52.8	79,550	32,039	-59.7
Apr	14,014	15,568	11.1	93,564	47,607	-49.1
May	19,762	12,987	-34.3	113,326	60,594	-46.5
Jun	23,871	16,419	-31.2	137,197	77,013	-43.9
Jul	30,900	19,212	-37.8	168,097	96,225	-42.8
Aug	25,638	17,922	-30.1	193,735	114,147	-41.1
Sep	22,873	14,884	-34.9	216,608	129,031	-40.4
Oct	28,967	21,438	-26.0	245,575	150,469	-38.7
Nov	26,529	19,697	-25.8	272,104	170,166	-37.5
Dec	16,970			289,074		

See footnote(s) at end of table.

--continued

**Dairy Products: Production by Product and Month,
United States, 2006-2007¹ (continued)**

Product and Month	By Month			Cumulative		
	2006	2007	Change From 2006	2006	2007	Change From 2006
	<i>1,000 Pounds</i>	<i>1,000 Pounds</i>	<i>Percent</i>	<i>1,000 Pounds</i>	<i>1,000 Pounds</i>	<i>Percent</i>
Dry Whey, Total ³						
Jan	88,391	96,145	8.8	88,391	96,145	8.8
Feb	89,695	90,232	0.6	178,086	186,377	4.7
Mar	100,953	98,713	-2.2	279,039	285,090	2.2
Apr	95,662	96,818	1.2	374,701	381,908	1.9
May	97,295	99,198	2.0	471,996	481,106	1.9
Jun	89,701	94,628	5.5	561,697	575,734	2.5
Jul	95,226	95,601	0.4	656,923	671,335	2.2
Aug	91,547	95,225	4.0	748,470	766,560	2.4
Sep	86,271	87,382	1.3	834,741	853,942	2.3
Oct	87,434	88,740	1.5	922,175	942,682	2.2
Nov	85,865	93,561	9.0	1,008,040	1,036,243	2.8
Dec	92,306			1,100,346		
Lactose, Human and Animal						
Jan	64,539	65,064	0.8	64,539	65,064	0.8
Feb	56,311	59,671	6.0	120,850	124,735	3.2
Mar	62,165	64,975	4.5	183,015	189,710	3.7
Apr	63,402	63,083	-0.5	246,417	252,793	2.6
May	66,057	67,145	1.6	312,474	319,938	2.4
Jun	60,027	62,013	3.3	372,501	381,951	2.5
Jul	60,333	64,473	6.9	432,834	446,424	3.1
Aug	64,225	62,813	-2.2	497,059	509,237	2.5
Sep	58,964	60,192	2.1	556,023	569,429	2.4
Oct	62,296	60,805	-2.4	618,319	630,234	1.9
Nov	60,505	58,816	-2.8	678,824	689,050	1.5
Dec	59,832			738,656		
Whey Protein Concentrate, Total						
Jan	37,162	33,055	-11.1	37,162	33,055	-11.1
Feb	34,436	29,432	-14.5	71,598	62,487	-12.7
Mar	37,766	35,038	-7.2	109,364	97,525	-10.8
Apr	37,525	33,188	-11.6	146,889	130,713	-11.0
May	37,373	33,436	-10.5	184,262	164,149	-10.9
Jun	36,190	33,672	-7.0	220,452	197,821	-10.3
Jul	35,704	33,342	-6.6	256,156	231,163	-9.8
Aug	35,024	30,883	-11.8	291,180	262,046	-10.0
Sep	34,581	31,699	-8.3	325,761	293,745	-9.8
Oct	34,581	32,511	-6.0	360,342	326,256	-9.5
Nov	33,116	32,249	-2.6	393,458	358,505	-8.9
Dec	34,266			427,724		

See footnote(s) at end of table.

--continued

**Dairy Products: Production by Product and Month,
United States, 2006-2007 ¹ (continued)**

Product and Month	By Month			Cumulative		
	2006	2007	Change From 2006	2006	2007	Change From 2006
	<i>1,000 Pounds</i>	<i>1,000 Pounds</i>	<i>Percent</i>	<i>1,000 Pounds</i>	<i>1,000 Pounds</i>	<i>Percent</i>
Cream Cottage Cheese						
Jan	29,943	29,227	-2.4	29,943	29,227	-2.4
Feb	29,095	28,326	-2.6	59,038	57,553	-2.5
Mar	32,376	32,027	-1.1	91,414	89,580	-2.0
Apr	28,670	30,465	6.3	120,084	120,045	
May	32,367	32,328	-0.1	152,451	152,373	-0.1
Jun	32,315	30,477	-5.7	184,766	182,850	-1.0
Jul	29,952	30,376	1.4	214,718	213,226	-0.7
Aug	35,692	32,569	-8.7	250,410	245,795	-1.8
Sep	30,412	30,713	1.0	280,822	276,508	-1.5
Oct	30,161	30,000	-0.5	310,983	306,508	-1.4
Nov	29,538	27,110	-8.2	340,521	333,618	-2.0
Dec	26,957			367,478		
Lowfat Cottage Cheese						
Jan	34,117	34,556	1.3	34,117	34,556	1.3
Feb	33,186	32,281	-2.7	67,303	66,837	-0.7
Mar	34,771	37,770	8.6	102,074	104,607	2.5
Apr	32,504	34,781	7.0	134,578	139,388	3.6
May	35,874	37,869	5.6	170,452	177,257	4.0
Jun	34,777	37,516	7.9	205,229	214,773	4.7
Jul	34,037	37,110	9.0	239,266	251,883	5.3
Aug	38,861	40,336	3.8	278,127	292,219	5.1
Sep	34,458	35,142	2.0	312,585	327,361	4.7
Oct	33,678	37,171	10.4	346,263	364,532	5.3
Nov	31,775	32,770	3.1	378,038	397,302	5.1
Dec	29,807			407,845		
Sour Cream						
Jan	85,732	90,856	6.0	85,732	90,856	6.0
Feb	80,267	80,054	-0.3	165,999	170,910	3.0
Mar	92,880	90,687	-2.4	258,879	261,597	1.0
Apr	83,097	88,343	6.3	341,976	349,940	2.3
May	94,154	94,848	0.7	436,130	444,788	2.0
Jun	92,565	88,483	-4.4	528,695	533,271	0.9
Jul	87,139	89,001	2.1	615,834	622,272	1.0
Aug	99,020	94,067	-5.0	714,854	716,339	0.2
Sep	87,555	84,814	-3.1	802,409	801,153	-0.2
Oct	101,849	100,356	-1.5	904,258	901,509	-0.3
Nov	113,822	110,610	-2.8	1,018,080	1,012,119	-0.6
Dec	103,385			1,121,465		

See footnote(s) at end of table.

--continued

**Dairy Products: Production by Product and Month,
United States, 2006-2007¹ (continued)**

Product and Month	By Month			Cumulative		
	2006	2007	Change From 2006	2006	2007	Change From 2006
	<i>1,000 Gallons</i>	<i>1,000 Gallons</i>	<i>Percent</i>	<i>1,000 Gallons</i>	<i>1,000 Gallons</i>	<i>Percent</i>
Ice Cream, Regular, Hard						
Jan	65,338	64,840	-0.8	65,338	64,840	-0.8
Feb	65,937	65,530	-0.6	131,275	130,370	-0.7
Mar	82,123	78,818	-4.0	213,398	209,188	-2.0
Apr	79,616	80,631	1.3	293,014	289,819	-1.1
May	84,890	85,254	0.4	377,904	375,073	-0.7
Jun	91,954	89,369	-2.8	469,858	464,442	-1.2
Jul	88,628	85,886	-3.1	558,486	550,328	-1.5
Aug	89,305	82,797	-7.3	647,791	633,125	-2.3
Sep	74,979	69,189	-7.7	722,770	702,314	-2.8
Oct	66,486	69,435	4.4	789,256	771,749	-2.2
Nov	58,922	56,400	-4.3	848,178	828,149	-2.4
Dec	51,144			899,322		
Ice Cream, Lowfat, Total						
Jan	24,286	26,726	10.0	24,286	26,726	10.0
Feb	24,566	28,053	14.2	48,852	54,779	12.1
Mar	31,845	35,734	12.2	80,697	90,513	12.2
Apr	32,333	37,081	14.7	113,030	127,594	12.9
May	36,336	42,147	16.0	149,366	169,741	13.6
Jun	42,339	43,605	3.0	191,705	213,346	11.3
Jul	37,770	39,814	5.4	229,475	253,160	10.3
Aug	36,448	38,791	6.4	265,923	291,951	9.8
Sep	30,887	30,179	-2.3	296,810	322,130	8.5
Oct	28,645	29,305	2.3	325,455	351,435	8.0
Nov	23,224	24,208	4.2	348,679	375,643	7.7
Dec	23,521			372,200		
Sherbet, Hard						
Jan	3,944	3,311	-16.0	3,944	3,311	-16.0
Feb	4,135	3,854	-6.8	8,079	7,165	-11.3
Mar	4,634	4,771	3.0	12,713	11,936	-6.1
Apr	4,375	5,368	22.7	17,088	17,304	1.3
May	4,662	5,384	15.5	21,750	22,688	4.3
Jun	4,984	5,897	18.3	26,734	28,585	6.9
Jul	4,886	5,264	7.7	31,620	33,849	7.0
Aug	4,830	4,853	0.5	36,450	38,702	6.2
Sep	3,795	4,323	13.9	40,245	43,025	6.9
Oct	3,642	4,007	10.0	43,887	47,032	7.2
Nov	3,079	3,372	9.5	46,966	50,404	7.3
Dec	2,808			49,774		

See footnote(s) at end of table.

--continued

**Dairy Products: Production by Product and Month,
United States, 2006-2007 ¹ (continued)**

Product and Month	By Month			Cumulative		
	2006	2007	Change From 2006	2006	2007	Change From 2006
	<i>1,000 Pounds</i>	<i>1,000 Pounds</i>	<i>Percent</i>	<i>1,000 Pounds</i>	<i>1,000 Pounds</i>	<i>Percent</i>
Yogurt, Plain & Flavored						
Jan	269,591	286,256	6.2	269,591	286,256	6.2
Feb	260,430	285,283	9.5	530,021	571,539	7.8
Mar	307,110	313,746	2.2	837,131	885,285	5.8
Apr	270,181	304,504	12.7	1,107,312	1,189,789	7.4
May	282,100	300,052	6.4	1,389,412	1,489,841	7.2
Jun	290,529	284,764	-2.0	1,679,941	1,774,605	5.6
Jul	266,544	288,479	8.2	1,946,485	2,063,084	6.0
Aug	294,044	309,871	5.4	2,240,529	2,372,955	5.9
Sep	288,769	315,993	9.4	2,529,298	2,688,948	6.3
Oct	273,415	296,585	8.5	2,802,713	2,985,533	6.5
Nov	238,194	264,217	10.9	3,040,907	3,249,750	6.9
Dec	253,680			3,294,587		
	<i>1,000 Gallons</i>	<i>1,000 Gallons</i>	<i>Percent</i>	<i>1,000 Gallons</i>	<i>1,000 Gallons</i>	<i>Percent</i>
Yogurt, Frozen						
Jan	4,563	4,589	0.6	4,563	4,589	0.6
Feb	4,746	4,151	-12.5	9,309	8,740	-6.1
Mar	6,126	6,524	6.5	15,435	15,264	-1.1
Apr	5,897	6,494	10.1	21,332	21,758	2.0
May	6,636	6,291	-5.2	27,968	28,049	0.3
Jun	6,697	7,098	6.0	34,665	35,147	1.4
Jul	6,368	5,772	-9.4	41,033	40,919	-0.3
Aug	6,877	5,396	-21.5	47,910	46,315	-3.3
Sep	5,756	4,333	-24.7	53,666	50,648	-5.6
Oct	5,296	4,085	-22.9	58,962	54,733	-7.2
Nov	4,408	3,589	-18.6	63,370	58,322	-8.0
Dec	4,080			67,450		

¹ October 2007 data revised.

² Includes protein standardized and blends.

³ Excludes all modified dry whey products.

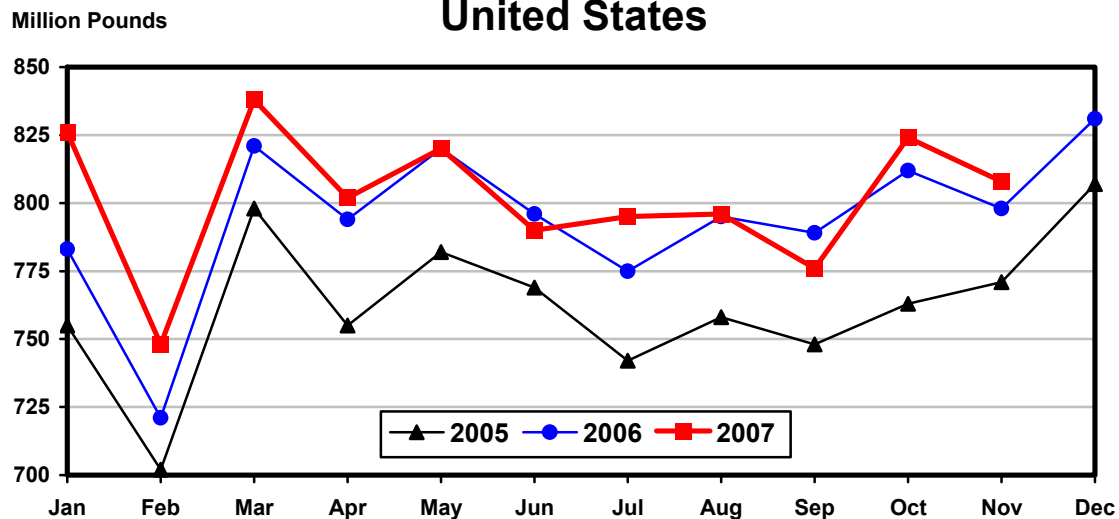
Total Cheese, Excluding Cottage Cheese: Production by State and United States, November 2006-2007

State	Nov 2006	Oct ¹ 2007	Nov 2007	Change From	
				Nov 2006	Oct 2007
	<i>1,000 Pounds</i>	<i>1,000 Pounds</i>	<i>1,000 Pounds</i>	<i>Percent</i>	<i>Percent</i>
CA	183,490	188,736	179,659	-2.1	-4.8
ID	69,465	67,101	65,382	-5.9	-2.6
IL	6,475	6,821	6,576	1.6	-3.6
IA	10,792	12,938	12,884	19.4	-0.4
MN	48,088	47,995	49,799	3.6	3.8
NM	52,655	52,108	51,050	-3.0	-2.0
NY	64,199	66,461	63,841	-0.6	-3.9
OH	15,992	16,517	16,175	1.1	-2.1
PA	30,909	33,957	34,586	11.9	1.9
SD	16,341	17,077	16,992	4.0	-0.5
UT	8,726	9,313	8,993	3.1	-3.4
WI	202,754	209,562	204,675	0.9	-2.3
Oth Sts ²	88,218	95,284	97,355	10.4	2.2
US	798,104	823,870	807,967	1.2	-1.9
Atlantic	113,558	119,017	116,314	2.4	-2.3
Central	329,718	344,255	344,174	4.4	
West	354,828	360,598	347,479	-2.1	-3.6

¹ Revised.

² States not shown when fewer than 3 plants reported or individual plant operations could be disclosed. Percent change shown only when comparable States are included in the calculation.

Total Cheese Production United States



American Cheese: Production by State and United States, November 2006-2007

State	Nov 2006	Oct ¹ 2007	Nov 2007	Change From	
				Nov 2006	Oct 2007
	<i>1,000 Pounds</i>	<i>1,000 Pounds</i>	<i>1,000 Pounds</i>	<i>Percent</i>	<i>Percent</i>
CA	63,797	61,621	59,818	-6.2	-2.9
ID	49,752	53,063	51,819	4.2	-2.3
MN	45,232	43,849	45,322	0.2	3.4
OH	2,562	2,162	2,038	-20.5	-5.7
OR	9,366	9,843	9,432	0.7	-4.2
WI	63,673	61,175	65,300	2.6	6.7
Oth Sts ²	77,828	89,085	89,357	14.8	0.3
US	312,210	320,798	323,086	3.5	0.7
Atlantic	11,652	12,933	12,454	6.9	-3.7
Central	131,472	135,209	142,323	8.3	5.3
West	169,086	172,656	168,309	-0.5	-2.5

¹ Revised.

² States not shown when fewer than 3 plants reported or individual plant operations could be disclosed. Percent change shown only when comparable States are included in the calculation.

Cheddar Cheese: Production by State and United States, November 2006-2007

State	Nov 2006	Oct ¹ 2007	Nov 2007	Change From	
				Nov 2006	Oct 2007
	<i>1,000 Pounds</i>	<i>1,000 Pounds</i>	<i>1,000 Pounds</i>	<i>Percent</i>	<i>Percent</i>
CA	38,869	33,188	35,215	-9.4	6.1
ID	46,308	42,589	42,178	-8.9	-1.0
MN	40,002	40,192	41,270	3.2	2.7
OH	1,775	1,898	1,771	-0.2	-6.7
WI	49,507	49,477	53,400	7.9	7.9
Oth Sts ²	70,734	77,295	78,832	11.4	2.0
US	247,195	244,639	252,666	2.2	3.3
Atlantic	11,048	12,109	11,896	7.7	-1.8
Central	106,051	112,589	118,635	11.9	5.4
West	130,096	119,941	122,135	-6.1	1.8

¹ Revised.

² States not shown when fewer than 3 plants reported or individual plant operations could be disclosed. Percent change shown only when comparable States are included in the calculation.

**Italian Cheese, Total: Production by State and
United States, November 2006-2007**

State	Nov 2006	Oct ¹ 2007	Nov 2007	Change From	
				Nov 2006	Oct 2007
	<i>1,000 Pounds</i>	<i>1,000 Pounds</i>	<i>1,000 Pounds</i>	<i>Percent</i>	<i>Percent</i>
CA	98,864	107,941	103,584	4.8	-4.0
ID	11,906	11,649	11,385	-4.4	-2.3
NY	32,064	33,791	35,227	9.9	4.2
PA	18,418	20,234	21,030	14.2	3.9
SD	8,897	9,205	9,116	2.5	-1.0
WI	97,916	99,380	96,009	-1.9	-3.4
Oth Sts ²	62,077	65,497	66,941	7.8	2.2
US	330,142	347,697	343,292	4.0	-1.3
Atlantic	58,943	61,667	63,900	8.4	3.6
Central	126,037	129,122	128,223	1.7	-0.7
West	145,162	156,908	151,169	4.1	-3.7

¹ Revised.

² States not shown when fewer than 3 plants reported or individual plant operations could be disclosed. Percent change shown only when comparable States are included in the calculation.

Mozzarella Cheese: Production by State and United States, November 2006-2007

State	Nov 2006	Oct ¹ 2007	Nov 2007	Change From	
				Nov 2006	Oct 2007
	<i>1,000 Pounds</i>	<i>1,000 Pounds</i>	<i>1,000 Pounds</i>	<i>Percent</i>	<i>Percent</i>
CA	89,988	96,577	93,562	4.0	-3.1
ID	10,339	10,045	9,598	-7.2	-4.4
NY	14,110	15,396	16,198	14.8	5.2
PA	15,151	17,593	18,174	20.0	3.3
WI	68,340	72,408	69,120	1.1	-4.5
Oth Sts ²	61,221	62,972	64,545	5.4	2.5
US	259,149	274,991	271,197	4.6	-1.4
Atlantic	35,078	38,037	39,632	13.0	4.2
Central	90,171	94,079	93,061	3.2	-1.1
West	133,900	142,875	138,504	3.4	-3.1

¹ Revised.

² States not shown when fewer than 3 plants reported or individual plant operations could be disclosed. Percent change shown only when comparable States are included in the calculation.

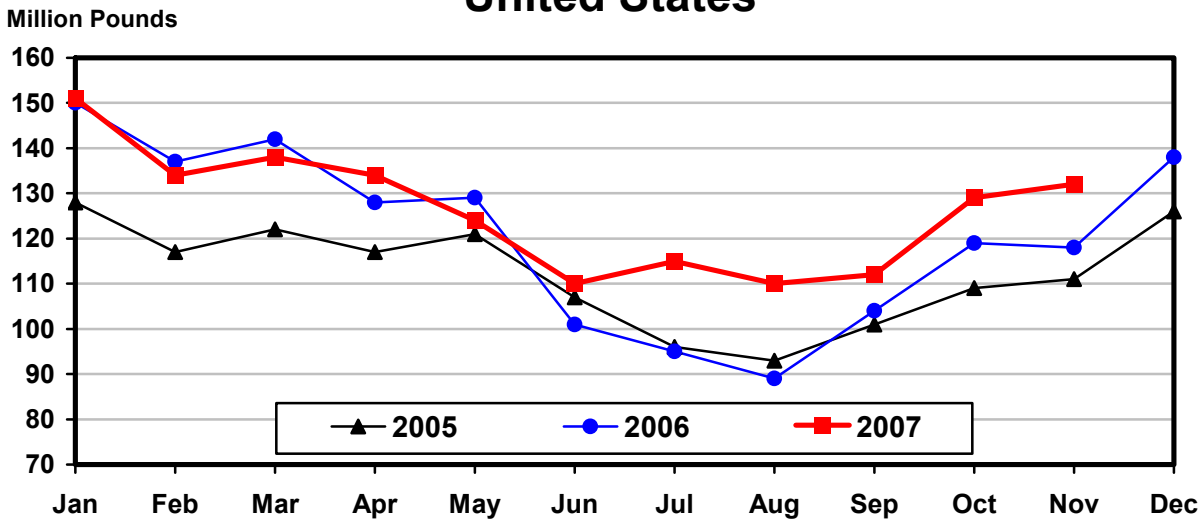
Butter: Production by State and United States, November 2006-2007

State	Nov 2006	Oct ¹ 2007	Nov 2007	Change From	
				Nov 2006	Oct 2007
	<i>1,000 Pounds</i>	<i>1,000 Pounds</i>	<i>1,000 Pounds</i>	<i>Percent</i>	<i>Percent</i>
CA	36,447	45,409	43,694	19.9	-3.8
NY	1,096	1,170	1,067	-2.6	-8.8
PA	6,306	5,736	5,729	-9.2	-0.1
WI	30,521	33,254	31,800	4.2	-4.4
Oth Sts ²	43,727	43,656	49,625	13.5	13.7
US	118,097	129,225	131,915	11.7	2.1
Atlantic	9,668	9,113	9,103	-5.8	-0.1
Central	53,741	53,933	58,476	8.8	8.4
West	54,688	66,179	64,336	17.6	-2.8

¹ Revised.

² States not shown when fewer than 3 plants reported or individual plant operations could be disclosed. Percent change shown only when comparable States are included in the calculation.

Total Butter Production United States



**Nonfat Dry Milk, Human: Production by State
and United States, November 2006-2007**

State	Nov 2006	Oct ¹ 2007	Nov 2007	Change From	
				Nov 2006	Oct 2007
	<i>1,000 Pounds</i>	<i>1,000 Pounds</i>	<i>1,000 Pounds</i>	<i>Percent</i>	<i>Percent</i>
CA	50,388	61,806	59,440	18.0	-3.8
Oth Sts ²	26,526	36,888	38,924	46.7	5.5
US	76,914	98,694	98,364	27.9	-0.3
Atlantic	4,144	8,781	10,965	164.6	24.9
Central	6,984	7,541	10,282	47.2	36.3
West	65,786	82,372	77,117	17.2	-6.4

¹ Revised.

² States not shown when fewer than 3 plants reported or individual plant operations could be disclosed. Percent change shown only when comparable States are included in the calculation.

**Dry Whey, Human: Production by State
and United States, November 2006-2007**

State	Nov 2006	Oct ¹ 2007	Nov 2007	Change From	
				Nov 2006	Oct 2007
	<i>1,000 Pounds</i>	<i>1,000 Pounds</i>	<i>1,000 Pounds</i>	<i>Percent</i>	<i>Percent</i>
CA	8,489	7,720	8,393	-1.1	8.7
MN	4,806	2,923	4,242	-11.7	45.1
NY	9,517	10,424	8,964	-5.8	-14.0
WI	23,508	24,736	28,100	19.5	13.6
Oth Sts ²	35,325	38,826	38,393	8.7	-1.1
US	81,645	84,629	88,092	7.9	4.1
Atlantic	17,035	18,538	17,382	2.0	-6.2
Central	38,214	38,390	43,184	13.0	12.5
West	26,396	27,701	27,526	4.3	-0.6

¹ Revised.

² States not shown when fewer than 3 plants reported or individual plant operations could be disclosed. Percent change shown only when comparable States are included in the calculation.

**Ice Cream, Regular, Hard: Production by State and United States,
November 2006-2007**

State	Nov 2006	Oct ¹ 2007	Nov 2007	Change From	
				Nov 2006	Oct 2007
	<i>1,000 Gallons</i>	<i>1,000 Gallons</i>	<i>1,000 Gallons</i>	<i>Percent</i>	<i>Percent</i>
CA	8,847	10,614	9,207	4.1	-13.3
FL	1,391	1,520	1,420	2.1	-6.6
IN	5,666	6,055	4,381	-22.7	-27.6
MA	3,907	3,691	2,743	-29.8	-25.7
MN	3,262	3,018	2,764	-15.3	-8.4
MO	1,208	3,076	950	-21.4	-69.1
NY	1,761	2,506	1,929	9.5	-23.0
NC	664	1,031	862	29.8	-16.4
OH	1,409	2,061	1,755	24.6	-14.8
OR	680	925	681	0.1	-26.4
PA	2,455	2,847	2,221	-9.5	-22.0
TN	784	1,125	993	26.7	-11.7
TX	3,754	4,709	4,442	18.3	-5.7
UT	1,853	2,061	1,790	-3.4	-13.1
Oth Sts ²	21,281	24,196	20,262	-4.8	-16.3
US	58,922	69,435	56,400	-4.3	-18.8
N Atl	10,571	11,621	9,038	-14.5	-22.2
S Atl	5,070	5,203	4,527	-10.7	-13.0
E N Cen	11,912	13,541	11,130	-6.6	-17.8
W N Cen	10,581	13,851	9,611	-9.2	-30.6
S Cen	7,560	9,351	8,615	14.0	-7.9
West	13,228	15,868	13,479	1.9	-15.1

¹ Revised.

² States not shown when fewer than 3 plants reported or individual plant operations could be disclosed. Percent change shown only when comparable States are included in the calculation.

**Canned Milk and Dry Milk Products: Manufacturers' Shipments,
and Stocks, November, 2006-2007**

Product	Nov 2006	Oct 2007 ¹	Nov 2007	Change From	
				Nov 2006	Oct 2007
Manufacturers' Shipments ²					
	<i>1,000 Pounds</i>	<i>1,000 Pounds</i>	<i>1,000 Pounds</i>	<i>Percent</i>	<i>Percent</i>
Nonfat Dry Milk, Human	58,676	98,112	79,842	36.1	-18.6
Manufacturers' Stocks End-of-Month ³					
	<i>1,000 Pounds</i>	<i>1,000 Pounds</i>	<i>1,000 Pounds</i>	<i>Percent</i>	<i>Percent</i>
Canned Evaporated and Condensed Whole Milk	47,546	52,129	35,275	-25.8	-32.3
Nonfat Dry Milk, Human	40,192	120,934	131,562	227.3	8.8
Dry Buttermilk, Total	4,038	12,121	14,430	257.4	19.0

¹ Revised.

² For dry products, shipments of bulk goods only.

³ Stocks held by manufacturers at all points and in transit.

Procedures and Reliability: Estimates included in this report are based on data provided each month by manufacturers of these products. In 32 States, the State Departments of Agriculture assist in collection of data, which eliminates duplicate reporting and reduces respondent burden. Data are collected by mail, personal and telephone interviews following the close of each month. There were 1,080 manufacturers that made one or more products in 2006. Each month, reports are generally received from all dairy plants in States with small numbers of plants. In States with large numbers of plants, survey procedures are designed to obtain monthly reports from all large plants and from a sample of small plants. Monthly estimates are based upon returns from about 70 percent of the plants which account for 70 to 90 percent of the total production of major dairy products.

Revision Policy: Monthly estimates are subject to revision the month following the preliminary estimates. Annual estimates are published in the "**Dairy Products**" report published each April which includes any revisions made to current and previous year. An attempt is made to get information from all plants for preparing these estimates

Information Contacts

Listed below are the commodity specialists in the Livestock Branch of the National Agricultural Statistics Service to contact for additional information.

Dan Kerestes, Chief, Livestock Branch (202) 720-3570

Livestock Section

Shawn Clark, Head, Livestock Section (202) 720-3570
 Bruce Boess - Hogs and Pigs (202) 720-3106
 Vacant - Dairy Products (202) 690-3236
 Jason Hardegee - Milk Production and Milk Cows (202) 720-3278
 Scott Hollis - Sheep & Lambs, Goats & Kids (202) 720-4751
 Mike Miller - Cattle, Cattle on Feed (202) 720-3040
 Benita Hodge - Livestock Slaughter (515) 284-4340
 Joe Gaynor - Dairy Products Prices (202) 690-2168

ACCESS TO REPORTS!!

For your convenience, there are several ways to obtain NASS reports, data products, and services:

INTERNET ACCESS

All NASS reports are available free of charge on the worldwide Internet. For access, connect to the Internet and go to the NASS Home Page at: www.nass.usda.gov.

E-MAIL SUBSCRIPTION

All NASS reports are available by subscription free of charge direct to your e-mail address. Starting with the NASS Home Page at www.nass.usda.gov, under the right navigation, *Receive reports by Email*, click on **National** or **State**. Follow the instructions on the screen.

PRINTED REPORTS OR DATA PRODUCTS

CALL OUR TOLL-FREE ORDER DESK: 800-999-6779 (U.S. and Canada)
Other areas, please call 703-605-6220 FAX: 703-605-6900
(Visa, MasterCard, check, or money order acceptable for payment.)

ASSISTANCE

For **assistance** with general agricultural statistics or further information about NASS or its products or services, contact the **Agricultural Statistics Hotline** at **800-727-9540**, 7:30 a.m. to 4:00 p.m. ET, or e-mail: nass@nass.usda.gov.

The U.S. Department of Agriculture (USDA) prohibits discrimination in all its programs and activities on the basis of race, color, national origin, age, disability, and where applicable, sex, marital status, familial status, parental status, religion, sexual orientation, genetic information, political beliefs, reprisal, or because all or a part of an individual's income is derived from any public assistance program. (Not all prohibited bases apply to all programs.) Persons with disabilities who require alternative means for communication of program information (Braille, large print, audiotape, etc.) should contact USDA's TARGET Center at (202) 720-2600 (voice and TDD).

To file a complaint of discrimination, write to USDA, Director, Office of Civil Rights, 1400 Independence Avenue, S.W., Washington, D.C. 20250-9410, or call (800) 795-3272 (voice) or (202) 720-6382 (TDD). USDA is an equal opportunity provider and employer.