
Released February 4, 2008, by the National Agricultural Statistics Service (NASS), Agricultural Statistics Board, U.S. Department of Agriculture. For information on *Dairy Products* call Jim Collom at (202) 690-3236, office hours 7:00 a.m. to 3:30 p.m. ET.

December 2007 Highlights

Total cheese output (excluding cottage cheese) was 843 million pounds, 1.5 percent above December 2006 and 3.9 percent above November 2007.

Italian type cheese production totaled 357 million pounds, 0.5 percent above December 2006 and 3.7 percent above November 2007.

American type cheese production totaled 334 million pounds, 1.3 percent below December 2006 but 3.2 percent above November 2007.

Butter production was 141 million pounds, 2.6 percent above December 2006 and 8.4 percent above November 2007.

Dry Milk Powders: (comparisons with December 2006)

Nonfat dry milk, human --- 108 million pounds, down 5.0 percent.

Skim milk powders --- 36.9 million pounds, up 117.6 percent.

Whey products: (comparisons with December 2006)

Dry whey, total --- 96.4 million pounds, up 4.4 percent.

Lactose, human and animal --- 59.4 million pounds, down 0.8 percent.

Whey protein concentrate, total --- 34.0 million pounds, down 0.8 percent.

Frozen products: (comparisons with December 2006)

Ice cream, Regular (hard) --- 52.3 million gallons, up 2.3 percent.

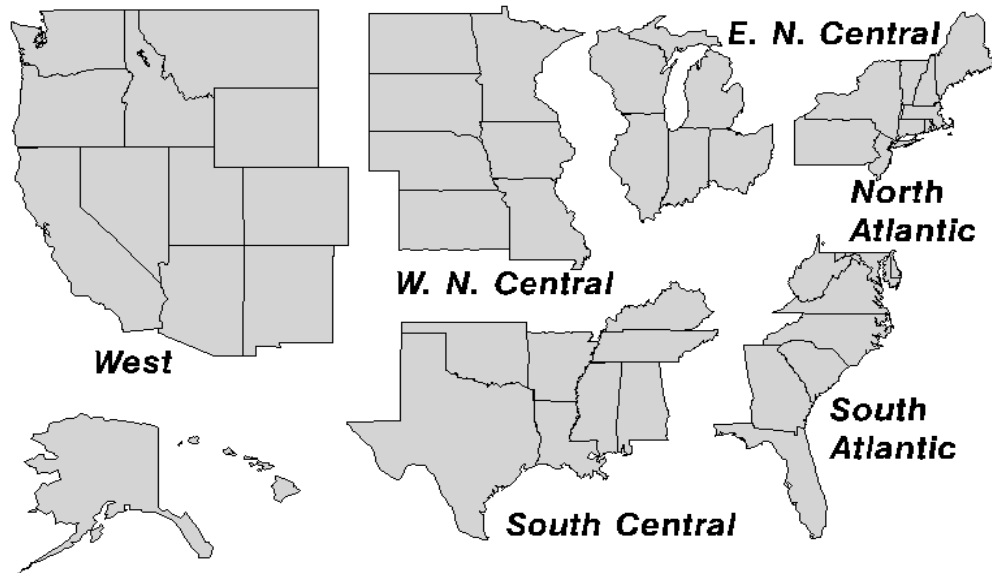
Ice cream, Lowfat (total) --- 22.7 million gallons, down 3.3 percent.

Sherbet (hard) --- 3.40 million gallons, up 21.2 percent.

Frozen Yogurt (total) --- 3.36 million gallons, down 17.7 percent.

U. S. Geographic Regions Dairy Products

If we are not able to publish a region for confidentiality reasons, it will be combined with other regions when possible. For example, if North Atlantic can not be published, then it will be combined with South Atlantic to publish Atlantic. The West North Central and East North Central will be combined, if necessary, to form North Central. In the event that neither could be published, they may be combined with South Central to publish Central. Some tables will have only limited regions shown, therefore the regions may not add to the United States total.



Contents

Page

Dairy Products: Production by Product, United States	1
Whey and Modified Whey Products: Production, Stocks, and Prices, United States.....	2
Dairy Products: Production by Product and Month, United States.....	3
Select Commodities by State and United States	10
Canned Milk and Dry Milk Products: Manufacturer's Shipments, Stocks, and Selling Prices.....	15
Procedures and Reliability	16
Information Contacts	16

**Dairy Products: Production by Product,
United States, December, 2006-2007**

Product	Dec 2006	Nov 2007 ¹	Dec 2007	Change From	
				Dec 2006	Nov 2007
	<i>1,000 Pounds</i>	<i>1,000 Pounds</i>	<i>1,000 Pounds</i>	<i>Percent</i>	<i>Percent</i>
Butter	137,593	130,193	141,123	2.6	8.4
Cheese					
American Types ²	338,204	323,611	333,818	-1.3	3.2
Cheddar	273,060	253,202	262,880	-3.7	3.8
Swiss	27,182	25,708	26,837	-1.3	4.4
Brick and Muenster	8,505	9,032	9,396	10.5	4.0
Cream and Neufchatel	62,962	68,288	76,636	21.7	12.2
Hispanic	14,944	15,810	14,628	-2.1	-7.5
Mozzarella	281,033	272,775	286,718	2.0	5.1
Other Italian Types	74,527	71,566	70,463	-5.5	-1.5
Total Italian Types	355,560	344,341	357,181	0.5	3.7
All Other Types	23,759	25,001	24,887	4.7	-0.5
Total	831,116	811,791	843,383	1.5	3.9
Cottage Cheese, Curd ³	33,862	34,913	33,998	0.4	-2.6
Cottage Cheese, Cream ⁴	26,957	26,705	25,936	-3.8	-2.9
Cottage Cheese, Lowfat ⁵	29,807	32,628	30,997	4.0	-5.0
Canned Evaporated and Condensed Whole Milk	33,718	39,974	48,366	43.4	21.0
Dry Whole Milk	2,659	2,258	3,909	47.0	73.1
Nonfat Dry Milk, Human	113,567	98,663	107,858	-5.0	9.3
Skim Milk Powders ⁶	16,970	19,697	36,928	117.6	87.5
Dry Skim Milk, Animal	764	358	408	-46.6	14.0
Dry Buttermilk	6,581	7,166	6,835	3.9	-4.6
Sour Cream	103,385	110,982	100,181	-3.1	-9.7
Yogurt, Plain & Flavored	253,680	263,988	273,429	7.8	3.6
	<i>1,000 Gallons</i>	<i>1,000 Gallons</i>	<i>1,000 Gallons</i>	<i>Percent</i>	<i>Percent</i>
Frozen Products					
Ice Cream, Regular, Hard	51,144	56,320	52,305	2.3	-7.1
Ice Cream, Lowfat, Hard	7,885	9,569	8,678	10.1	-9.3
Ice Cream, Lowfat, Soft	15,636	14,569	14,062	-10.1	-3.5
Ice Cream, Lowfat, Total	23,521	24,138	22,740	-3.3	-5.8
Ice Cream, Nonfat, Hard	772	846	890	15.3	5.2
Sherbet, Hard	2,808	3,360	3,404	21.2	1.3
Water and Juice Ices	2,142	2,999	2,543	18.7	-15.2
Frozen Yogurt, Total	4,080	3,579	3,356	-17.7	-6.2
Regular & Lowfat, Hard	1,268	1,640	1,287	1.5	-21.5
Nonfat, Hard	470	512	441	-6.2	-13.9
Other Frozen Dairy Products	631	953	1,112	76.2	16.7
Mix for Frozen Products					
Ice Cream Mix	27,715	30,371	28,123	1.5	-7.4
Ice Cream, Lowfat, Mix	14,112	13,760	12,988	-8.0	-5.6
Ice Cream, Nonfat, Mix	483	466	506	4.8	8.6
Sherbet Mix	2,097	2,078	2,065	-1.5	-0.6
Yogurt Mix	2,420	2,169	2,034	-16.0	-6.2

¹ Revised.

² Includes Cheddar, Colby, Monterey, and Jack.

³ Mostly used for processing into cream or lowfat cottage cheese.

⁴ Fat content 4 percent or more.

⁵ Fat content less than 4 percent.

⁶ Includes protein standardized and blends.

**Whey and Modified Whey Products: Production, Stocks,
and Prices, United States, December, 2006-2007**

Product	Dec 2006	Nov 2007 ¹	Dec 2007	Change From	
				Dec 2006	Nov 2007
Production					
	<i>1,000 Pounds</i>	<i>1,000 Pounds</i>	<i>1,000 Pounds</i>	<i>Percent</i>	<i>Percent</i>
Condensed Whey, Solids Content ²					
Sweet-Type, Human	9,589	9,792	10,224	6.6	4.4
Dry Whey Products					
Dry Whey, Human	88,577	88,378	91,332	3.1	3.3
Dry Whey, Animal	3,729	5,444	5,058	35.6	-7.1
Dry Whey, Total	92,306	93,822	96,390	4.4	2.7
Reduced Lactose and Minerals					
Human Food	3,942	3,484	3,492	-11.4	0.2
Animal Feed	4,210	4,799	5,066	20.3	5.6
Lactose, Human and Animal	59,832	58,627	59,379	-0.8	1.3
Whey					
Protein Concentrate					
Human ³	29,900	30,436	31,770	6.3	4.4
Animal ³	4,366	2,032	2,222	-49.1	9.4
Total ³	34,266	32,468	33,992	-0.8	4.7
25.0-49.9 Percent ⁴	23,369	20,817	21,910	-6.2	5.3
50.0-89.9 Percent ⁴	10,897	11,651	12,082	10.9	3.7
Protein Isolates ⁵	3,351	3,128	3,332	-0.6	6.5
Manufacturers' Stocks End-of-Month ⁶					
	<i>1,000 Pounds</i>	<i>1,000 Pounds</i>	<i>1,000 Pounds</i>	<i>Percent</i>	<i>Percent</i>
Dry Whey Products					
Dry Whey, Human	40,455	52,530	61,013	50.8	16.1
Dry Whey, Animal	1,277	5,693	4,969	289.1	-12.7
Dry Whey, Total	41,732	58,223	65,982	58.1	13.3
Reduced Lactose and Minerals					
Human and Animal ⁷	5,589	13,124	14,904	166.7	13.6
Lactose, Human and Animal	39,675	64,790	68,359	72.3	5.5
Whey					
Protein Concentrate					
Human ³	27,199	26,056	29,313	7.8	12.5
Animal ³	2,080	675	775	-62.7	14.8
Total ³	29,279	26,731	30,088	2.8	12.6
25.0-49.9 Percent ⁴	18,678	17,437	20,041	7.3	14.9
50.0-89.9 Percent ⁴	10,601	9,294	10,047	-5.2	8.1
Manufacturers' Selling Price ⁸					
	<i>Cents per Pound</i>	<i>Cents per Pound</i>	<i>Cents per Pound</i>	<i>Cents Change</i>	<i>Cents Change</i>
Dry Whey, Animal	37.1	34.0	33.1	-4.0	-0.9

¹ Revised.

² Final marketable product only. Does not include quantity used or shipped to another plant for further processing into dry whey or modified whey products. Does not include sweet-type, animal whey.

³ Whey Protein Concentrate, 25.0 to 89.9 percent.

⁴ Whey Protein Concentrate, Human and Animal.

⁵ Whey Protein Isolate, 90.0 percent or greater.

⁶ Stocks held by manufacturers at all points and in transit.

⁷ Reduced lactose and minerals stocks combined to avoid disclosure of individual operations.

⁸ Prices for bulk goods, f.o.b. plant. Average monthly prices reported by firms.

**Dairy Products: Production by Product and Month,
United States, 2006-2007 ¹**

Product and Month	By Month			Cumulative		
	2006	2007	Change From 2006	2006	2007	Change From 2006
	<i>1,000 Pounds</i>	<i>1,000 Pounds</i>	<i>Percent</i>	<i>1,000 Pounds</i>	<i>1,000 Pounds</i>	<i>Percent</i>
Total Cheese						
Jan	782,671	825,969	5.5	782,671	825,969	5.5
Feb	720,501	748,496	3.9	1,503,172	1,574,465	4.7
Mar	820,805	837,743	2.1	2,323,977	2,412,208	3.8
Apr	793,585	802,480	1.1	3,117,562	3,214,688	3.1
May	820,034	820,429		3,937,596	4,035,117	2.5
Jun	796,104	790,252	-0.7	4,733,700	4,825,369	1.9
Jul	775,398	795,463	2.6	5,509,098	5,620,832	2.0
Aug	795,133	795,618	0.1	6,304,231	6,416,450	1.8
Sep	788,604	775,601	-1.6	7,092,835	7,192,051	1.4
Oct	812,276	823,870	1.4	7,905,111	8,015,921	1.4
Nov	798,104	811,791	1.7	8,703,215	8,827,712	1.4
Dec	831,116	843,383	1.5	9,534,331	9,671,095	1.4
American Cheese						
Jan	325,636	343,095	5.4	325,636	343,095	5.4
Feb	299,035	305,474	2.2	624,671	648,569	3.8
Mar	336,095	338,377	0.7	960,766	986,946	2.7
Apr	337,267	325,744	-3.4	1,298,033	1,312,690	1.1
May	346,162	331,408	-4.3	1,644,195	1,644,098	
Jun	331,375	315,701	-4.7	1,975,570	1,959,799	-0.8
Jul	327,511	322,256	-1.6	2,303,081	2,282,055	-0.9
Aug	318,071	312,183	-1.9	2,621,152	2,594,238	-1.0
Sep	320,115	301,004	-6.0	2,941,267	2,895,242	-1.6
Oct	320,925	320,798		3,262,192	3,216,040	-1.4
Nov	312,210	323,611	3.7	3,574,402	3,539,651	-1.0
Dec	338,204	333,818	-1.3	3,912,606	3,873,469	-1.0
Cheddar Cheese						
Jan	265,842	274,082	3.1	265,842	274,082	3.1
Feb	241,532	248,714	3.0	507,374	522,796	3.0
Mar	267,799	270,069	0.8	775,173	792,865	2.3
Apr	271,722	257,133	-5.4	1,046,895	1,049,998	0.3
May	274,229	265,412	-3.2	1,321,124	1,315,410	-0.4
Jun	263,380	251,466	-4.5	1,584,504	1,566,876	-1.1
Jul	265,953	253,290	-4.8	1,850,457	1,820,166	-1.6
Aug	250,375	240,506	-3.9	2,100,832	2,060,672	-1.9
Sep	254,242	230,982	-9.1	2,355,074	2,291,654	-2.7
Oct	249,425	244,639	-1.9	2,604,499	2,536,293	-2.6
Nov	247,195	253,202	2.4	2,851,694	2,789,495	-2.2
Dec	273,060	262,880	-3.7	3,124,754	3,052,375	-2.3

See footnote(s) at end of table.

--continued

**Dairy Products: Production by Product and Month,
United States, 2006-2007¹ (continued)**

Product and Month	By Month			Cumulative		
	2006	2007	Change From 2006	2006	2007	Change From 2006
	<i>1,000 Pounds</i>	<i>1,000 Pounds</i>	<i>Percent</i>	<i>1,000 Pounds</i>	<i>1,000 Pounds</i>	<i>Percent</i>
Italian Cheese						
Jan	330,843	353,589	6.9	330,843	353,589	6.9
Feb	306,391	319,585	4.3	637,234	673,174	5.6
Mar	348,058	361,191	3.8	985,292	1,034,365	5.0
Apr	331,202	344,811	4.1	1,316,494	1,379,176	4.8
May	337,437	349,263	3.5	1,653,931	1,728,439	4.5
Jun	328,269	337,308	2.8	1,982,200	2,065,747	4.2
Jul	320,586	335,081	4.5	2,302,786	2,400,828	4.3
Aug	333,159	333,629	0.1	2,635,945	2,734,457	3.7
Sep	327,134	330,203	0.9	2,963,079	3,064,660	3.4
Oct	339,721	347,697	2.3	3,302,800	3,412,357	3.3
Nov	330,142	344,341	4.3	3,632,942	3,756,698	3.4
Dec	355,560	357,181	0.5	3,988,502	4,113,879	3.1
Mozzarella						
Jan	259,949	279,383	7.5	259,949	279,383	7.5
Feb	240,457	256,343	6.6	500,406	535,726	7.1
Mar	273,367	287,089	5.0	773,773	822,815	6.3
Apr	262,340	276,496	5.4	1,036,113	1,099,311	6.1
May	265,835	278,766	4.9	1,301,948	1,378,077	5.8
Jun	260,874	273,297	4.8	1,562,822	1,651,374	5.7
Jul	255,341	269,764	5.6	1,818,163	1,921,138	5.7
Aug	261,166	264,074	1.1	2,079,329	2,185,212	5.1
Sep	258,736	263,728	1.9	2,338,065	2,448,940	4.7
Oct	266,315	274,991	3.3	2,604,380	2,723,931	4.6
Nov	259,149	272,775	5.3	2,863,529	2,996,706	4.7
Dec	281,033	286,718	2.0	3,144,562	3,283,424	4.4
Other Italian						
Jan	70,894	74,206	4.7	70,894	74,206	4.7
Feb	65,934	63,242	-4.1	136,828	137,448	0.5
Mar	74,691	74,102	-0.8	211,519	211,550	
Apr	68,862	68,315	-0.8	280,381	279,865	-0.2
May	71,602	70,497	-1.5	351,983	350,362	-0.5
Jun	67,395	64,011	-5.0	419,378	414,373	-1.2
Jul	65,245	65,317	0.1	484,623	479,690	-1.0
Aug	71,993	69,555	-3.4	556,616	549,245	-1.3
Sep	68,398	66,475	-2.8	625,014	615,720	-1.5
Oct	73,406	72,706	-1.0	698,420	688,426	-1.4
Nov	70,993	71,566	0.8	769,413	759,992	-1.2
Dec	74,527	70,463	-5.5	843,940	830,455	-1.6

See footnote(s) at end of table.

--continued

**Dairy Products: Production by Product and Month,
United States, 2006-2007 ¹ (continued)**

Product and Month	By Month			Cumulative		
	2006	2007	Change From 2006	2006	2007	Change From 2006
	<i>1,000 Pounds</i>	<i>1,000 Pounds</i>	<i>Percent</i>	<i>1,000 Pounds</i>	<i>1,000 Pounds</i>	<i>Percent</i>
Butter						
Jan	149,832	151,030	0.8	149,832	151,030	0.8
Feb	136,840	134,171	-2.0	286,672	285,201	-0.5
Mar	141,714	138,196	-2.5	428,386	423,397	-1.2
Apr	127,681	134,355	5.2	556,067	557,752	0.3
May	128,556	124,417	-3.2	684,623	682,169	-0.4
Jun	101,110	109,719	8.5	785,733	791,888	0.8
Jul	94,729	115,468	21.9	880,462	907,356	3.1
Aug	88,880	109,804	23.5	969,342	1,017,160	4.9
Sep	104,317	111,774	7.1	1,073,659	1,128,934	5.1
Oct	119,133	129,225	8.5	1,192,792	1,258,159	5.5
Nov	118,097	130,193	10.2	1,310,889	1,388,352	5.9
Dec	137,593	141,123	2.6	1,448,482	1,529,475	5.6
Nonfat Dry Milk, Human						
Jan	111,278	108,849	-2.2	111,278	108,849	-2.2
Feb	117,998	98,098	-16.9	229,276	206,947	-9.7
Mar	128,867	118,034	-8.4	358,143	324,981	-9.3
Apr	130,613	123,068	-5.8	488,756	448,049	-8.3
May	132,935	115,949	-12.8	621,691	563,998	-9.3
Jun	116,846	119,333	2.1	738,537	683,331	-7.5
Jul	88,594	123,152	39.0	827,131	806,483	-2.5
Aug	73,193	102,999	40.7	900,324	909,482	1.0
Sep	63,278	89,704	41.8	963,602	999,186	3.7
Oct	69,989	98,694	41.0	1,033,591	1,097,880	6.2
Nov	76,914	98,663	28.3	1,110,505	1,196,543	7.7
Dec	113,567	107,858	-5.0	1,224,072	1,304,401	6.6
Skim Milk Powders ²						
Jan	30,883	10,812	-65.0	30,883	10,812	-65.0
Feb	27,087	11,032	-59.3	57,970	21,844	-62.3
Mar	21,580	10,195	-52.8	79,550	32,039	-59.7
Apr	14,014	15,568	11.1	93,564	47,607	-49.1
May	19,762	12,987	-34.3	113,326	60,594	-46.5
Jun	23,871	16,419	-31.2	137,197	77,013	-43.9
Jul	30,900	19,212	-37.8	168,097	96,225	-42.8
Aug	25,638	17,922	-30.1	193,735	114,147	-41.1
Sep	22,873	14,884	-34.9	216,608	129,031	-40.4
Oct	28,967	21,438	-26.0	245,575	150,469	-38.7
Nov	26,529	19,697	-25.8	272,104	170,166	-37.5
Dec	16,970	36,928	117.6	289,074	207,094	-28.4

See footnote(s) at end of table.

--continued

**Dairy Products: Production by Product and Month,
United States, 2006-2007¹ (continued)**

Product and Month	By Month			Cumulative		
	2006	2007	Change From 2006	2006	2007	Change From 2006
	<i>1,000 Pounds</i>	<i>1,000 Pounds</i>	<i>Percent</i>	<i>1,000 Pounds</i>	<i>1,000 Pounds</i>	<i>Percent</i>
Dry Whey, Total ³						
Jan	88,391	96,145	8.8	88,391	96,145	8.8
Feb	89,695	90,232	0.6	178,086	186,377	4.7
Mar	100,953	98,713	-2.2	279,039	285,090	2.2
Apr	95,662	96,818	1.2	374,701	381,908	1.9
May	97,295	99,198	2.0	471,996	481,106	1.9
Jun	89,701	94,628	5.5	561,697	575,734	2.5
Jul	95,226	95,601	0.4	656,923	671,335	2.2
Aug	91,547	95,225	4.0	748,470	766,560	2.4
Sep	86,271	87,382	1.3	834,741	853,942	2.3
Oct	87,434	88,740	1.5	922,175	942,682	2.2
Nov	85,865	93,822	9.3	1,008,040	1,036,504	2.8
Dec	92,306	96,390	4.4	1,100,346	1,132,894	3.0
Lactose, Human and Animal						
Jan	64,539	65,064	0.8	64,539	65,064	0.8
Feb	56,311	59,671	6.0	120,850	124,735	3.2
Mar	62,165	64,975	4.5	183,015	189,710	3.7
Apr	63,402	63,083	-0.5	246,417	252,793	2.6
May	66,057	67,145	1.6	312,474	319,938	2.4
Jun	60,027	62,013	3.3	372,501	381,951	2.5
Jul	60,333	64,473	6.9	432,834	446,424	3.1
Aug	64,225	62,813	-2.2	497,059	509,237	2.5
Sep	58,964	60,192	2.1	556,023	569,429	2.4
Oct	62,296	60,805	-2.4	618,319	630,234	1.9
Nov	60,505	58,627	-3.1	678,824	688,861	1.5
Dec	59,832	59,379	-0.8	738,656	748,240	1.3
Whey Protein Concentrate, Total						
Jan	37,162	33,055	-11.1	37,162	33,055	-11.1
Feb	34,436	29,432	-14.5	71,598	62,487	-12.7
Mar	37,766	35,038	-7.2	109,364	97,525	-10.8
Apr	37,525	33,188	-11.6	146,889	130,713	-11.0
May	37,373	33,436	-10.5	184,262	164,149	-10.9
Jun	36,190	33,672	-7.0	220,452	197,821	-10.3
Jul	35,704	33,342	-6.6	256,156	231,163	-9.8
Aug	35,024	30,883	-11.8	291,180	262,046	-10.0
Sep	34,581	31,699	-8.3	325,761	293,745	-9.8
Oct	34,581	32,511	-6.0	360,342	326,256	-9.5
Nov	33,116	32,468	-2.0	393,458	358,724	-8.8
Dec	34,266	33,992	-0.8	427,724	392,716	-8.2

See footnote(s) at end of table.

--continued

**Dairy Products: Production by Product and Month,
United States, 2006-2007 ¹ (continued)**

Product and Month	By Month			Cumulative		
	2006	2007	Change From 2006	2006	2007	Change From 2006
	<i>1,000 Pounds</i>	<i>1,000 Pounds</i>	<i>Percent</i>	<i>1,000 Pounds</i>	<i>1,000 Pounds</i>	<i>Percent</i>
Cream Cottage Cheese						
Jan	29,943	29,227	-2.4	29,943	29,227	-2.4
Feb	29,095	28,326	-2.6	59,038	57,553	-2.5
Mar	32,376	32,027	-1.1	91,414	89,580	-2.0
Apr	28,670	30,465	6.3	120,084	120,045	
May	32,367	32,328	-0.1	152,451	152,373	-0.1
Jun	32,315	30,477	-5.7	184,766	182,850	-1.0
Jul	29,952	30,376	1.4	214,718	213,226	-0.7
Aug	35,692	32,569	-8.7	250,410	245,795	-1.8
Sep	30,412	30,713	1.0	280,822	276,508	-1.5
Oct	30,161	30,000	-0.5	310,983	306,508	-1.4
Nov	29,538	26,705	-9.6	340,521	333,213	-2.1
Dec	26,957	25,936	-3.8	367,478	359,149	-2.3
Lowfat Cottage Cheese						
Jan	34,117	34,556	1.3	34,117	34,556	1.3
Feb	33,186	32,281	-2.7	67,303	66,837	-0.7
Mar	34,771	37,770	8.6	102,074	104,607	2.5
Apr	32,504	34,781	7.0	134,578	139,388	3.6
May	35,874	37,869	5.6	170,452	177,257	4.0
Jun	34,777	37,516	7.9	205,229	214,773	4.7
Jul	34,037	37,110	9.0	239,266	251,883	5.3
Aug	38,861	40,336	3.8	278,127	292,219	5.1
Sep	34,458	35,142	2.0	312,585	327,361	4.7
Oct	33,678	37,171	10.4	346,263	364,532	5.3
Nov	31,775	32,628	2.7	378,038	397,160	5.1
Dec	29,807	30,997	4.0	407,845	428,157	5.0
Sour Cream						
Jan	85,732	90,856	6.0	85,732	90,856	6.0
Feb	80,267	80,054	-0.3	165,999	170,910	3.0
Mar	92,880	90,687	-2.4	258,879	261,597	1.0
Apr	83,097	88,343	6.3	341,976	349,940	2.3
May	94,154	94,848	0.7	436,130	444,788	2.0
Jun	92,565	88,483	-4.4	528,695	533,271	0.9
Jul	87,139	89,001	2.1	615,834	622,272	1.0
Aug	99,020	94,067	-5.0	714,854	716,339	0.2
Sep	87,555	84,814	-3.1	802,409	801,153	-0.2
Oct	101,849	100,356	-1.5	904,258	901,509	-0.3
Nov	113,822	110,982	-2.5	1,018,080	1,012,491	-0.5
Dec	103,385	100,181	-3.1	1,121,465	1,112,672	-0.8

See footnote(s) at end of table.

--continued

**Dairy Products: Production by Product and Month,
United States, 2006-2007¹ (continued)**

Product and Month	By Month			Cumulative		
	2006	2007	Change From 2006	2006	2007	Change From 2006
	<i>1,000 Gallons</i>	<i>1,000 Gallons</i>	<i>Percent</i>	<i>1,000 Gallons</i>	<i>1,000 Gallons</i>	<i>Percent</i>
Ice Cream, Regular, Hard						
Jan	65,338	64,840	-0.8	65,338	64,840	-0.8
Feb	65,937	65,530	-0.6	131,275	130,370	-0.7
Mar	82,123	78,818	-4.0	213,398	209,188	-2.0
Apr	79,616	80,631	1.3	293,014	289,819	-1.1
May	84,890	85,254	0.4	377,904	375,073	-0.7
Jun	91,954	89,369	-2.8	469,858	464,442	-1.2
Jul	88,628	85,886	-3.1	558,486	550,328	-1.5
Aug	89,305	82,797	-7.3	647,791	633,125	-2.3
Sep	74,979	69,189	-7.7	722,770	702,314	-2.8
Oct	66,486	69,435	4.4	789,256	771,749	-2.2
Nov	58,922	56,320	-4.4	848,178	828,069	-2.4
Dec	51,144	52,305	2.3	899,322	880,374	-2.1
Ice Cream, Lowfat, Total						
Jan	24,286	26,726	10.0	24,286	26,726	10.0
Feb	24,566	28,053	14.2	48,852	54,779	12.1
Mar	31,845	35,734	12.2	80,697	90,513	12.2
Apr	32,333	37,081	14.7	113,030	127,594	12.9
May	36,336	42,147	16.0	149,366	169,741	13.6
Jun	42,339	43,605	3.0	191,705	213,346	11.3
Jul	37,770	39,814	5.4	229,475	253,160	10.3
Aug	36,448	38,791	6.4	265,923	291,951	9.8
Sep	30,887	30,179	-2.3	296,810	322,130	8.5
Oct	28,645	29,305	2.3	325,455	351,435	8.0
Nov	23,224	24,138	3.9	348,679	375,573	7.7
Dec	23,521	22,740	-3.3	372,200	398,313	7.0
Sherbet, Hard						
Jan	3,944	3,311	-16.0	3,944	3,311	-16.0
Feb	4,135	3,854	-6.8	8,079	7,165	-11.3
Mar	4,634	4,771	3.0	12,713	11,936	-6.1
Apr	4,375	5,368	22.7	17,088	17,304	1.3
May	4,662	5,384	15.5	21,750	22,688	4.3
Jun	4,984	5,897	18.3	26,734	28,585	6.9
Jul	4,886	5,264	7.7	31,620	33,849	7.0
Aug	4,830	4,853	0.5	36,450	38,702	6.2
Sep	3,795	4,323	13.9	40,245	43,025	6.9
Oct	3,642	4,007	10.0	43,887	47,032	7.2
Nov	3,079	3,360	9.1	46,966	50,392	7.3
Dec	2,808	3,404	21.2	49,774	53,796	8.1

See footnote(s) at end of table.

--continued

**Dairy Products: Production by Product and Month,
United States, 2006-2007 ¹ (continued)**

Product and Month	By Month			Cumulative		
	2006	2007	Change From 2006	2006	2007	Change From 2006
	<i>1,000 Pounds</i>	<i>1,000 Pounds</i>	<i>Percent</i>	<i>1,000 Pounds</i>	<i>1,000 Pounds</i>	<i>Percent</i>
Yogurt, Plain & Flavored						
Jan	269,591	286,256	6.2	269,591	286,256	6.2
Feb	260,430	285,283	9.5	530,021	571,539	7.8
Mar	307,110	313,746	2.2	837,131	885,285	5.8
Apr	270,181	304,504	12.7	1,107,312	1,189,789	7.4
May	282,100	300,052	6.4	1,389,412	1,489,841	7.2
Jun	290,529	284,764	-2.0	1,679,941	1,774,605	5.6
Jul	266,544	288,479	8.2	1,946,485	2,063,084	6.0
Aug	294,044	309,871	5.4	2,240,529	2,372,955	5.9
Sep	288,769	315,993	9.4	2,529,298	2,688,948	6.3
Oct	273,415	296,585	8.5	2,802,713	2,985,533	6.5
Nov	238,194	263,988	10.8	3,040,907	3,249,521	6.9
Dec	253,680	273,429	7.8	3,294,587	3,522,950	6.9
	<i>1,000 Gallons</i>	<i>1,000 Gallons</i>	<i>Percent</i>	<i>1,000 Gallons</i>	<i>1,000 Gallons</i>	<i>Percent</i>
Yogurt, Frozen						
Jan	4,563	4,589	0.6	4,563	4,589	0.6
Feb	4,746	4,151	-12.5	9,309	8,740	-6.1
Mar	6,126	6,524	6.5	15,435	15,264	-1.1
Apr	5,897	6,494	10.1	21,332	21,758	2.0
May	6,636	6,291	-5.2	27,968	28,049	0.3
Jun	6,697	7,098	6.0	34,665	35,147	1.4
Jul	6,368	5,772	-9.4	41,033	40,919	-0.3
Aug	6,877	5,396	-21.5	47,910	46,315	-3.3
Sep	5,756	4,333	-24.7	53,666	50,648	-5.6
Oct	5,296	4,085	-22.9	58,962	54,733	-7.2
Nov	4,408	3,579	-18.8	63,370	58,312	-8.0
Dec	4,080	3,356	-17.7	67,450	61,668	-8.6

¹ November 2007 data revised.

² Includes protein standardized and blends.

³ Excludes all modified dry whey products.

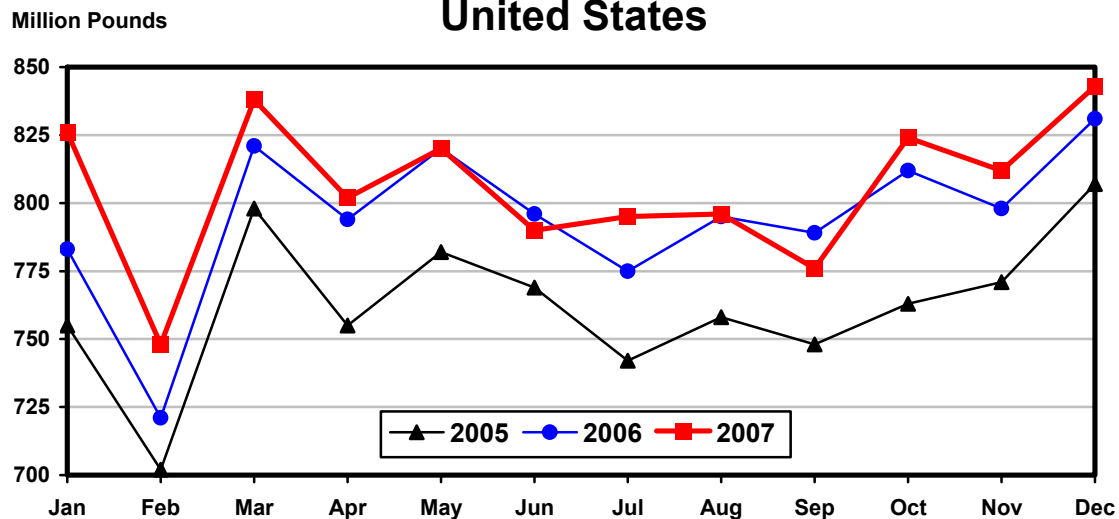
Total Cheese, Excluding Cottage Cheese: Production by State and United States, December 2006-2007

State	Dec 2006	Nov ¹ 2007	Dec 2007	Change From	
				Dec 2006	Nov 2007
	<i>1,000 Pounds</i>	<i>1,000 Pounds</i>	<i>1,000 Pounds</i>	<i>Percent</i>	<i>Percent</i>
CA	194,474	181,576	189,440	-2.6	4.3
ID	66,974	65,219	66,165	-1.2	1.5
IL	6,684	6,576	6,804	1.8	3.5
IA	11,830	13,070	12,880	8.9	-1.5
MN	53,808	49,799	54,752	1.8	9.9
NM	58,674	51,890	52,442	-10.6	1.1
NY	61,368	63,833	68,635	11.8	7.5
OH	16,688	16,196	16,624	-0.4	2.6
PA	31,912	34,596	34,260	7.4	-1.0
SD	16,540	16,992	16,821	1.7	-1.0
UT	8,368	8,993	9,813	17.3	9.1
WI	211,428	204,957	210,924	-0.2	2.9
Oth Sts ²	92,368	98,094	103,823	12.4	5.8
US	831,116	811,791	843,383	1.5	3.9
Atlantic	111,520	116,731	120,759	8.3	3.5
Central	347,378	344,987	361,690	4.1	4.8
West	372,218	350,073	360,934	-3.0	3.1

¹ Revised.

² States not shown when fewer than 3 plants reported or individual plant operations could be disclosed. Percent change shown only when comparable States are included in the calculation.

**Total Cheese Production
United States**



American Cheese: Production by State and United States, December 2006-2007

State	Dec 2006	Nov ¹ 2007	Dec 2007	Change From	
				Dec 2006	Nov 2007
	<i>1,000 Pounds</i>	<i>1,000 Pounds</i>	<i>1,000 Pounds</i>	<i>Percent</i>	<i>Percent</i>
CA	68,888	59,811	62,952	-8.6	5.3
ID	50,558	51,819	52,561	4.0	1.4
MN	50,982	45,322	49,866	-2.2	10.0
OH	2,494	2,089	2,053	-17.7	-1.7
OR	9,966	9,432	9,410	-5.6	-0.2
WI	67,844	65,435	67,400	-0.7	3.0
Oth Sts ²	87,472	89,703	89,576	2.4	-0.1
US	338,204	323,611	333,818	-1.3	3.2
Atlantic	12,025	12,476	12,342	2.6	-1.1
Central	143,701	142,833	151,513	5.4	6.1
West	182,478	168,302	169,963	-6.9	1.0

¹ Revised.

² States not shown when fewer than 3 plants reported or individual plant operations could be disclosed. Percent change shown only when comparable States are included in the calculation.

Cheddar Cheese: Production by State and United States, December 2006-2007

State	Dec 2006	Nov ¹ 2007	Dec 2007	Change From	
				Dec 2006	Nov 2007
	<i>1,000 Pounds</i>	<i>1,000 Pounds</i>	<i>1,000 Pounds</i>	<i>Percent</i>	<i>Percent</i>
CA	43,401	35,215	39,986	-7.9	13.5
ID	47,179	42,178	42,391	-10.1	0.5
MN	46,849	41,270	44,120	-5.8	6.9
OH	1,753	1,825	1,808	3.1	-0.9
WI	54,031	53,540	54,700	1.2	2.2
Oth Sts ²	79,847	79,174	79,875		0.9
US	273,060	253,202	262,880	-3.7	3.8
Atlantic	11,495	11,914	11,719	1.9	-1.6
Central	119,031	119,153	125,487	5.4	5.3
West	142,534	122,135	125,674	-11.8	2.9

¹ Revised.

² States not shown when fewer than 3 plants reported or individual plant operations could be disclosed. Percent change shown only when comparable States are included in the calculation.

Italian Cheese, Total: Production by State and United States, December 2006-2007

State	Dec 2006	Nov ¹ 2007	Dec 2007	Change From	
				Dec 2006	Nov 2007
	<i>1,000 Pounds</i>	<i>1,000 Pounds</i>	<i>1,000 Pounds</i>	<i>Percent</i>	<i>Percent</i>
CA	108,240	104,043	108,655	0.4	4.4
ID	11,495	11,385	11,334	-1.4	-0.4
NY	33,712	35,203	34,628	2.7	-1.6
PA	20,527	21,030	20,805	1.4	-1.1
SD	8,659	9,116	8,998	3.9	-1.3
WI	103,677	95,681	99,359	-4.2	3.8
Oth Sts ²	69,250	67,883	73,402	6.0	8.1
US	355,560	344,341	357,181	0.5	3.7
Atlantic	62,926	64,074	63,999	1.7	-0.1
Central	135,914	127,895	133,604	-1.7	4.5
West	156,720	152,372	159,578	1.8	4.7

¹ Revised.

² States not shown when fewer than 3 plants reported or individual plant operations could be disclosed. Percent change shown only when comparable States are included in the calculation.

Mozzarella Cheese: Production by State and United States, December 2006-2007

State	Dec 2006	Nov ¹ 2007	Dec 2007	Change From	
				Dec 2006	Nov 2007
	<i>1,000 Pounds</i>	<i>1,000 Pounds</i>	<i>1,000 Pounds</i>	<i>Percent</i>	<i>Percent</i>
CA	96,806	93,947	99,104	2.4	5.5
ID	9,793	9,598	9,716	-0.8	1.2
NY	15,941	16,174	17,710	11.1	9.5
PA	17,578	18,174	18,103	3.0	-0.4
WI	73,732	69,774	73,100	-0.9	4.8
Oth Sts ²	67,183	65,108	68,985	2.7	6.0
US	281,033	272,775	286,718	2.0	5.1
Atlantic	39,440	39,607	41,365	4.9	4.4
Central	99,102	93,715	98,018	-1.1	4.6
West	142,491	139,453	147,335	3.4	5.7

¹ Revised.

² States not shown when fewer than 3 plants reported or individual plant operations could be disclosed. Percent change shown only when comparable States are included in the calculation.

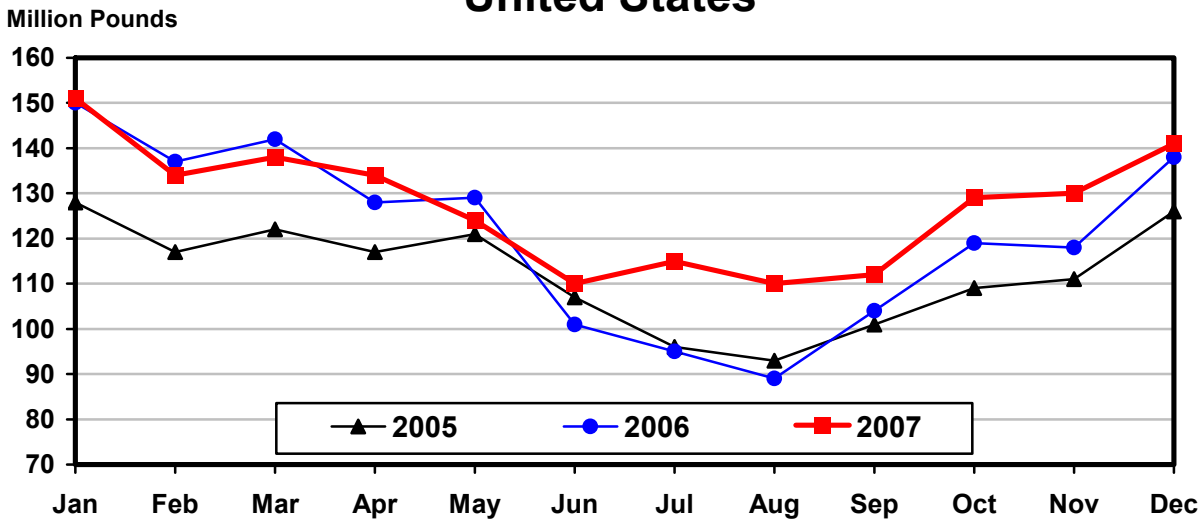
Butter: Production by State and United States, December 2006-2007

State	Dec 2006	Nov ¹ 2007	Dec 2007	Change From	
				Dec 2006	Nov 2007
	<i>1,000 Pounds</i>	<i>1,000 Pounds</i>	<i>1,000 Pounds</i>	<i>Percent</i>	<i>Percent</i>
CA	43,866	43,702	46,966	7.1	7.5
NY	1,480	1,067	1,754	18.5	64.4
PA	7,036	5,729	7,810	11.0	36.3
WI	34,704	31,728	34,900	0.6	10.0
Oth Sts ²	50,507	47,967	49,693	-1.6	3.6
US	137,593	130,193	141,123	2.6	8.4
Atlantic	12,528	9,103	12,082	-3.6	32.7
Central	61,329	56,746	60,359	-1.6	6.4
West	63,736	64,344	68,682	7.8	6.7

¹ Revised.

² States not shown when fewer than 3 plants reported or individual plant operations could be disclosed. Percent change shown only when comparable States are included in the calculation.

Total Butter Production United States



**Nonfat Dry Milk, Human: Production by State
and United States, December 2006-2007**

State	Dec 2006	Nov ¹ 2007	Dec 2007	Change From	
				Dec 2006	Nov 2007
	<i>1,000 Pounds</i>	<i>1,000 Pounds</i>	<i>1,000 Pounds</i>	<i>Percent</i>	<i>Percent</i>
CA	63,442	59,440	58,033	-8.5	-2.4
Oth Sts ²	50,125	39,223	49,825	-0.6	27.0
US	113,567	98,663	107,858	-5.0	9.3
Atlantic	12,992	11,174	15,509	19.4	38.8
Central	13,058	10,372	14,860	13.8	43.3
West	87,517	77,117	77,489	-11.5	0.5

¹ Revised.

² States not shown when fewer than 3 plants reported or individual plant operations could be disclosed. Percent change shown only when comparable States are included in the calculation.

**Dry Whey, Human: Production by State
and United States, December 2006-2007**

State	Dec 2006	Nov ¹ 2007	Dec 2007	Change From	
				Dec 2006	Nov 2007
	<i>1,000 Pounds</i>	<i>1,000 Pounds</i>	<i>1,000 Pounds</i>	<i>Percent</i>	<i>Percent</i>
CA	8,784	8,393	9,905	12.8	18.0
MN	5,105	4,242	4,724	-7.5	11.4
NY	10,645	8,992	10,617	-0.3	18.1
WI	24,277	28,067	27,600	13.7	-1.7
Oth Sts ²	39,766	38,684	38,486	-3.2	-0.5
US	88,577	88,378	91,332	3.1	3.3
Atlantic	19,096	17,410	18,838	-1.4	8.2
Central	40,554	43,442	43,594	7.5	0.3
West	28,927	27,526	28,900	-0.1	5.0

¹ Revised.

² States not shown when fewer than 3 plants reported or individual plant operations could be disclosed. Percent change shown only when comparable States are included in the calculation.

**Ice Cream, Regular, Hard: Production by State and United States,
December 2006-2007**

State	Dec 2006	Nov ¹ 2007	Dec 2007	Change From	
				Dec 2006	Nov 2007
	<i>1,000 Gallons</i>	<i>1,000 Gallons</i>	<i>1,000 Gallons</i>	<i>Percent</i>	<i>Percent</i>
CA	7,551	9,186	5,581	-26.1	-39.2
FL	1,454	1,420	1,350	-7.2	-4.9
IN	5,063	4,381	5,124	1.2	17.0
MA	2,764	2,743	2,515	-9.0	-8.3
MN	2,590	2,764	2,285	-11.8	-17.3
MO	896	950	1,450	61.8	52.6
NY	1,613	1,929	2,150	33.3	11.5
NC	957	825	664	-30.6	-19.5
OH	1,540	1,755	1,516	-1.6	-13.6
OR	661	681	643	-2.7	-5.6
PA	2,065	2,202	2,054	-0.5	-6.7
TN	924	993	755	-18.3	-24.0
TX	3,466	4,442	3,796	9.5	-14.5
UT	1,590	1,790	1,914	20.4	6.9
Oth Sts ²	18,010	20,259	20,508	13.9	1.2
US	51,144	56,320	52,305	2.3	-7.1
N Atl	8,675	9,017	9,093	4.8	0.8
S Atl	5,206	4,490	4,305	-17.3	-4.1
E N Cen	11,263	11,129	10,768	-4.4	-3.2
W N Cen	8,318	9,612	11,655	40.1	21.3
S Cen	6,953	8,615	7,058	1.5	-18.1
West	10,729	13,457	9,426	-12.1	-30.0

¹ Revised.

² States not shown when fewer than 3 plants reported or individual plant operations could be disclosed. Percent change shown only when comparable States are included in the calculation.

**Canned Milk and Dry Milk Products: Manufacturers' Shipments,
and Stocks, December, 2006-2007**

Product	Dec 2006	Nov 2007 ¹	Dec 2007	Change From	
				Dec 2006	Nov 2007
Manufacturers' Shipments ²					
	<i>1,000 Pounds</i>	<i>1,000 Pounds</i>	<i>1,000 Pounds</i>	<i>Percent</i>	<i>Percent</i>
Nonfat Dry Milk, Human	66,977	79,724	67,617	1.0	-15.2
Manufacturers' Stocks End-of-Month ³					
	<i>1,000 Pounds</i>	<i>1,000 Pounds</i>	<i>1,000 Pounds</i>	<i>Percent</i>	<i>Percent</i>
Canned Evaporated and Condensed Whole Milk	30,929	37,791	37,441	21.1	-0.9
Nonfat Dry Milk, Human	79,064	131,674	159,134	101.3	20.9
Dry Buttermilk, Total	5,088	14,107	16,654	227.3	18.1

¹ Revised.

² For dry products, shipments of bulk goods only.

³ Stocks held by manufacturers at all points and in transit.

Procedures and Reliability: Estimates included in this report are based on data provided each month by manufacturers of these products. In 32 States, the State Departments of Agriculture assist in collection of data, which eliminates duplicate reporting and reduces respondent burden. Data are collected by mail, personal and telephone interviews following the close of each month. There were 1,080 manufacturers that made one or more products in 2006. Each month, reports are generally received from all dairy plants in States with small numbers of plants. In States with large numbers of plants, survey procedures are designed to obtain monthly reports from all large plants and from a sample of small plants. Monthly estimates are based upon returns from about 70 percent of the plants which account for 70 to 90 percent of the total production of major dairy products.

Revision Policy: Monthly estimates are subject to revision the month following the preliminary estimates. Annual estimates are published in the "**Dairy Products**" report published each April which includes any revisions made to current and previous year. An attempt is made to get information from all plants for preparing these estimates

Information Contacts

Listed below are the commodity specialists in the Livestock Branch of the National Agricultural Statistics Service to contact for additional information.

Dan Kerestes, Chief, Livestock Branch (202) 720-3570

Livestock Section

Shawn Clark, Head, Livestock Section (202) 720-3570
 Bruce Boess - Hogs and Pigs (202) 720-3106
 Jim Collom - Dairy Products (202) 690-3236
 Joe Gaynor - Dairy Products Prices (202) 690-2168
 Jason Hardegree - Milk Production and Milk Cows (202) 720-3278
 Benita Hodge - Livestock Slaughter (515) 284-4340
 Scott Hollis - Sheep and Goats (202) 720-4751
 Mike Miller - Cattle, Cattle on Feed (202) 720-3040

ACCESS TO REPORTS!!

For your convenience, there are several ways to obtain NASS reports, data products, and services:

INTERNET ACCESS

All NASS reports are available free of charge on the worldwide Internet. For access, connect to the Internet and go to the NASS Home Page at: www.nass.usda.gov.

E-MAIL SUBSCRIPTION

All NASS reports are available by subscription free of charge direct to your e-mail address. Starting with the NASS Home Page at www.nass.usda.gov, under the right navigation, *Receive reports by Email*, click on **National** or **State**. Follow the instructions on the screen.

PRINTED REPORTS OR DATA PRODUCTS

CALL OUR TOLL-FREE ORDER DESK: 800-999-6779 (U.S. and Canada)
Other areas, please call 703-605-6220 FAX: 703-605-6900
(Visa, MasterCard, check, or money order acceptable for payment.)

ASSISTANCE

For **assistance** with general agricultural statistics or further information about NASS or its products or services, contact the **Agricultural Statistics Hotline** at **800-727-9540**, 7:30 a.m. to 4:00 p.m. ET, or e-mail: nass@nass.usda.gov.

The U.S. Department of Agriculture (USDA) prohibits discrimination in all its programs and activities on the basis of race, color, national origin, age, disability, and where applicable, sex, marital status, familial status, parental status, religion, sexual orientation, genetic information, political beliefs, reprisal, or because all or a part of an individual's income is derived from any public assistance program. (Not all prohibited bases apply to all programs.) Persons with disabilities who require alternative means for communication of program information (Braille, large print, audiotape, etc.) should contact USDA's TARGET Center at (202) 720-2600 (voice and TDD).

To file a complaint of discrimination, write to USDA, Director, Office of Civil Rights, 1400 Independence Avenue, S.W., Washington, D.C. 20250-9410, or call (800) 795-3272 (voice) or (202) 720-6382 (TDD). USDA is an equal opportunity provider and employer.