

---

Released August 4, 2008, by the National Agricultural Statistics Service (NASS), Agricultural Statistics Board, U.S. Department of Agriculture. For information on *Dairy Products* call Jim Collom at (202) 690-3236, office hours 7:00 a.m. to 3:30 p.m. ET.

## June 2008 Highlights

**Total cheese** output (excluding cottage cheese) was 803 million pounds, 1.3 percent above June 2007 but 3.4 percent below May 2008.

**Italian type cheese** production totaled 333 million pounds, 1.8 percent below June 2007 and 3.4 percent below May 2008.

**American type cheese** production totaled 333 million pounds, 5.4 percent above June 2007 but 5.4 percent below May 2008.

**Butter** production was 120 million pounds, 9.0 percent above June 2007 but 16.0 percent below May 2008.

**Dry Milk Powders:** (comparisons with June 2007)

Nonfat dry milk, human --- 132 million pounds, up 11.9 percent.

Skim milk powders --- 33.9 million pounds, up 106.3 percent.

**Whey products:** (comparisons with June 2007)

Dry whey, total --- 92.5 million pounds, down 2.3 percent.

Lactose, human and animal --- 63.1 million pounds, up 0.2 percent.

Whey protein concentrate, total --- 34.3 million pounds, up 3.7 percent.

**Frozen products:** (comparisons with June 2007)

Ice cream, Regular (hard) --- 90.0 million gallons, up 3.4 percent.

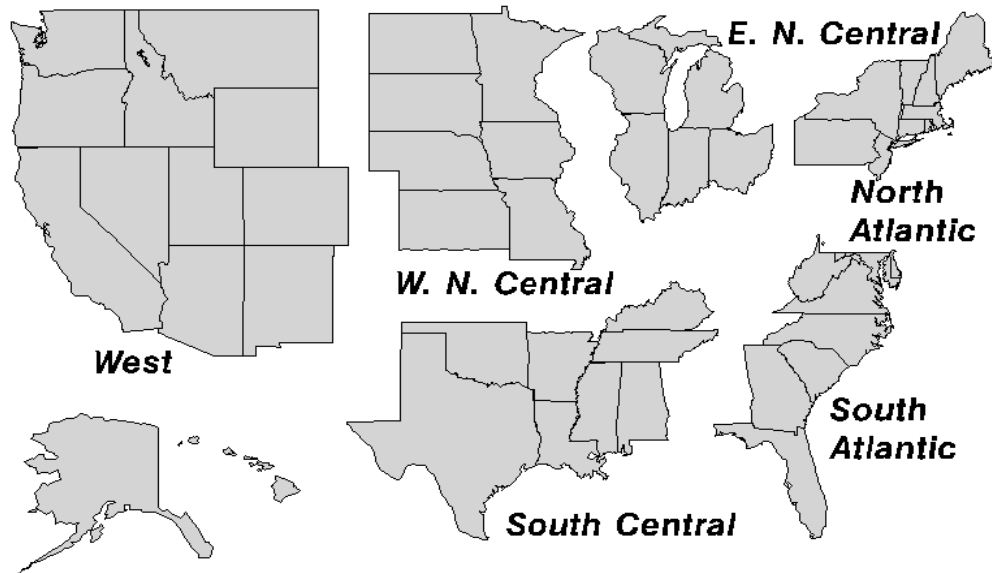
Ice cream, Lowfat (total) --- 43.4 million gallons, up 6.8 percent.

Sherbet (hard) --- 5.56 million gallons, down 9.9 percent.

Frozen Yogurt (total) --- 6.75 million gallons, up 5.6 percent.

## U. S. Geographic Regions Dairy Products

If a region is unable to be published for confidentiality reasons, it will be combined with other regions when possible. For example, if North Atlantic can not be published, it will be combined with South Atlantic to publish Atlantic. The West North Central and East North Central will be combined, if necessary, to form North Central. In the event that neither could be published, they may be combined with South Central to publish Central. Some tables will have only limited regions shown, therefore the regions may not add to the United States total.



## Contents

## Page

Dairy Products: Production by Product, United States .....	1
Whey and Modified Whey Products: Production, Stocks, and Prices, United States.....	2
Dairy Products: Production by Product and Month, United States.....	3
Select Commodities by State and United States .....	10
Canned Milk and Dry Milk Products: Manufacturers' Shipments and Stocks.....	15
Procedures and Reliability .....	16
Information Contacts .....	16

**Dairy Products: Production by Product,  
United States, June, 2007-2008**

Product	Jun 2007	May 2008 <sup>1</sup>	Jun 2008	Change From	
				Jun 2007	May 2008
	<i>1,000 Pounds</i>	<i>1,000 Pounds</i>	<i>1,000 Pounds</i>	<i>Percent</i>	<i>Percent</i>
Butter	109,980	142,599	119,840	9.0	-16.0
Cheese					
American Types <sup>2</sup>	315,522	351,343	332,510	5.4	-5.4
Cheddar	251,330	273,739	256,691	2.1	-6.2
Swiss	26,887	28,007	26,510	-1.4	-5.3
Brick and Muenster	8,790	9,629	11,959	36.1	24.2
Cream and Neufchatel	62,534	56,561	61,033	-2.4	7.9
Hispanic	15,265	14,864	14,877	-2.5	0.1
Mozzarella	274,913	270,913	260,182	-5.4	-4.0
Other Italian Types	64,153	73,657	72,725	13.4	-1.3
Total Italian Types	339,066	344,570	332,907	-1.8	-3.4
All Other Types	24,515	26,783	23,467	-4.3	-12.4
Total	792,579	831,757	803,263	1.3	-3.4
Cottage Cheese, Curd <sup>3</sup>	39,385	39,549	37,533	-4.7	-5.1
Cottage Cheese, Cream <sup>4</sup>	30,909	29,521	28,201	-8.8	-4.5
Cottage Cheese, Lowfat <sup>5</sup>	36,453	35,416	32,755	-10.1	-7.5
Canned Evaporated and Condensed Whole Milk	44,708	51,761	52,095	16.5	0.6
Dry Whole Milk	3,120	4,946	4,954	58.8	0.2
Nonfat Dry Milk, Human Skim Milk Powders <sup>6</sup>	118,173	128,921	132,206	11.9	2.5
Dry Skim Milk, Animal	16,419	45,511	33,873	106.3	-25.6
Dry Buttermilk	482	607	555	15.1	-8.6
Sour Cream	6,283	7,085	5,527	-12.0	-22.0
Yogurt, Plain & Flavored	88,709	93,902	88,032	-0.8	-6.3
	284,869	299,007	293,290	3.0	-1.9
	<i>1,000 Gallons</i>	<i>1,000 Gallons</i>	<i>1,000 Gallons</i>	<i>Percent</i>	<i>Percent</i>
Frozen Products					
Ice Cream, Regular, Hard	87,058	80,737	89,993	3.4	11.5
Ice Cream, Lowfat, Hard	14,733	13,439	16,083	9.2	19.7
Ice Cream, Lowfat, Soft	25,839	25,581	27,268	5.5	6.6
Ice Cream, Lowfat, Total	40,572	39,020	43,351	6.8	11.1
Ice Cream, Nonfat, Hard	1,325	1,184	1,239	-6.5	4.6
Sherbet, Hard	6,167	5,568	5,555	-9.9	-0.2
Water and Juice Ices	7,261	6,819	6,926	-4.6	1.6
Frozen Yogurt, Total	6,391	6,722	6,747	5.6	0.4
Regular & Lowfat, Hard	2,206	2,237	2,080	-5.7	-7.0
Nonfat, Hard	618	703	694	12.3	-1.3
Other Frozen Dairy Products	1,226	1,143	1,565	27.7	36.9
Mix for Frozen Products					
Ice Cream Mix	49,159	45,103	49,001	-0.3	8.6
Ice Cream, Lowfat, Mix	24,251	22,391	24,793	2.2	10.7
Ice Cream, Nonfat, Mix	728	661	763	4.8	15.4
Sherbet Mix	4,155	3,503	3,623	-12.8	3.4
Yogurt Mix	3,941	4,074	4,089	3.8	0.4

<sup>1</sup> Revised.

<sup>2</sup> Includes Cheddar, Colby, Monterey, and Jack.

<sup>3</sup> Mostly used for processing into cream or lowfat cottage cheese.

<sup>4</sup> Fat content 4 percent or more.

<sup>5</sup> Fat content less than 4 percent.

<sup>6</sup> Includes protein standardized and blends.

**Whey and Modified Whey Products: Production, Stocks,  
and Prices, United States, June, 2007-2008**

Product	Jun 2007	May 2008 <sup>1</sup>	Jun 2008	Change From	
				Jun 2007	May 2008
<b>Production</b>					
	<i>1,000 Pounds</i>	<i>1,000 Pounds</i>	<i>1,000 Pounds</i>	<i>Percent</i>	<i>Percent</i>
Condensed Whey, Solids Content <sup>2</sup>					
Sweet-Type, Human	8,708	10,802	9,511	9.2	-12.0
Dry Whey Products					
Dry Whey, Human	89,167	91,347	86,514	-3.0	-5.3
Dry Whey, Animal	5,489	5,699	5,994	9.2	5.2
Dry Whey, Total	94,656	97,046	92,508	-2.3	-4.7
Reduced Lactose and Minerals					
Human Food	4,258	3,221	3,640	-14.5	13.0
Animal Feed	4,043	4,391	4,335	7.2	-1.3
Lactose, Human and Animal	62,953	65,029	63,079	0.2	-3.0
Whey					
Protein Concentrate					
Human <sup>3</sup>	29,895	34,336	32,464	8.6	-5.5
Animal <sup>3</sup>	3,151	2,133	1,810	-42.6	-15.1
Total <sup>3</sup>	33,046	36,469	34,274	3.7	-6.0
25.0-49.9 Percent <sup>4</sup>	21,571	24,966	23,179	7.5	-7.2
50.0-89.9 Percent <sup>4</sup>	11,475	11,503	11,095	-3.3	-3.5
Protein Isolates <sup>5</sup>	3,372	3,254	3,344	-0.8	2.8
<b>Manufacturers' Stocks End-of-Month <sup>6</sup></b>					
	<i>1,000 Pounds</i>	<i>1,000 Pounds</i>	<i>1,000 Pounds</i>	<i>Percent</i>	<i>Percent</i>
Dry Whey Products					
Dry Whey, Human	45,516	53,451	57,452	26.2	7.5
Dry Whey, Animal	5,554	4,182	5,116	-7.9	22.3
Dry Whey, Total	51,070	57,633	62,568	22.5	8.6
Reduced Lactose and Minerals					
Human and Animal <sup>7</sup>	8,584	16,154	17,220	100.6	6.6
Lactose, Human and Animal	45,108	79,983	83,810	85.8	4.8
Whey					
Protein Concentrate					
Human <sup>3</sup>	24,917	41,774	42,252	69.6	1.1
Animal <sup>3</sup>	2,264	709	774	-65.8	9.2
Total <sup>3</sup>	27,181	42,483	43,026	58.3	1.3
25.0-49.9 Percent <sup>4</sup>	18,223	27,353	28,443	56.1	4.0
50.0-89.9 Percent <sup>4</sup>	8,958	15,130	14,583	62.8	-3.6
<b>Manufacturers' Selling Price <sup>8</sup></b>					
	<i>Cents per Pound</i>	<i>Cents per Pound</i>	<i>Cents per Pound</i>	<i>Cents Change</i>	<i>Cents Change</i>
Dry Whey, Animal	61.9	17.8	20.5	-41.4	2.7

<sup>1</sup> Revised.

<sup>2</sup> Final marketable product only. Does not include quantity used or shipped to another plant for further processing into dry whey or modified whey products. Does not include sweet-type, animal whey.

<sup>3</sup> Whey Protein Concentrate, 25.0 to 89.9 percent.

<sup>4</sup> Whey Protein Concentrate, Human and Animal.

<sup>5</sup> Whey Protein Isolate, 90.0 percent or greater.

<sup>6</sup> Stocks held by manufacturers at all points and in transit.

<sup>7</sup> Reduced lactose and minerals stocks combined to avoid disclosure of individual operations.

<sup>8</sup> Prices for bulk goods, f.o.b. plant. Average monthly prices reported by firms.

**Dairy Products: Production by Product and Month,  
United States, 2007-2008 <sup>1</sup>**

Product and Month	By Month			Cumulative		
	2007	2008	Change From 2007	2007	2008	Change From 2007
	<i>1,000 Pounds</i>	<i>1,000 Pounds</i>	<i>Percent</i>	<i>1,000 Pounds</i>	<i>1,000 Pounds</i>	<i>Percent</i>
<b>Total Cheese</b>						
Jan	822,889	812,722	-1.2	822,889	812,722	-1.2
Feb	754,132	784,649	4.0	1,577,021	1,597,371	1.3
Mar	840,522	834,716	-0.7	2,417,543	2,432,087	0.6
Apr	803,834	810,178	0.8	3,221,377	3,242,265	0.6
May	824,627	831,757	0.9	4,046,004	4,074,022	0.7
Jun	792,579	803,263	1.3	4,838,583	4,877,285	0.8
Jul	799,498			5,638,081		
Aug	797,033			6,435,114		
Sep	777,163			7,212,277		
Oct	825,769			8,038,046		
Nov	815,175			8,853,221		
Dec	847,278			9,700,499		
<b>American Cheese</b>						
Jan	339,636	333,952	-1.7	339,636	333,952	-1.7
Feb	306,214	319,335	4.3	645,850	653,287	1.2
Mar	339,364	339,069	-0.1	985,214	992,356	0.7
Apr	325,940	337,392	3.5	1,311,154	1,329,748	1.4
May	332,537	351,343	5.7	1,643,691	1,681,091	2.3
Jun	315,522	332,510	5.4	1,959,213	2,013,601	2.8
Jul	324,709			2,283,922		
Aug	311,892			2,595,814		
Sep	299,616			2,895,430		
Oct	321,308			3,216,738		
Nov	324,668			3,541,406		
Dec	336,421			3,877,827		
<b>Cheddar Cheese</b>						
Jan	272,310	262,443	-3.6	272,310	262,443	-3.6
Feb	249,177	251,251	0.8	521,487	513,694	-1.5
Mar	270,971	265,335	-2.1	792,458	779,029	-1.7
Apr	257,600	267,984	4.0	1,050,058	1,047,013	-0.3
May	265,704	273,739	3.0	1,315,762	1,320,752	0.4
Jun	251,330	256,691	2.1	1,567,092	1,577,443	0.7
Jul	255,335			1,822,427		
Aug	240,499			2,062,926		
Sep	230,123			2,293,049		
Oct	245,236			2,538,285		
Nov	253,180			2,791,465		
Dec	265,823			3,057,288		

See footnote(s) at end of table.

--continued

**Dairy Products: Production by Product and Month,  
United States, 2007-2008<sup>1</sup> (continued)**

Product and Month	By Month			Cumulative		
	2007	2008	Change From 2007	2007	2008	Change From 2007
	<i>1,000 Pounds</i>	<i>1,000 Pounds</i>	<i>Percent</i>	<i>1,000 Pounds</i>	<i>1,000 Pounds</i>	<i>Percent</i>
<b>Italian Cheese</b>						
Jan	355,797	351,817	-1.1	355,797	351,817	-1.1
Feb	323,511	334,973	3.5	679,308	686,790	1.1
Mar	362,151	358,315	-1.1	1,041,459	1,045,105	0.4
Apr	345,284	343,605	-0.5	1,386,743	1,388,710	0.1
May	351,560	344,570	-2.0	1,738,303	1,733,280	-0.3
Jun	339,066	332,907	-1.8	2,077,369	2,066,187	-0.5
Jul	336,380			2,413,749		
Aug	335,601			2,749,350		
Sep	332,353			3,081,703		
Oct	348,027			3,429,730		
Nov	345,858			3,775,588		
Dec	358,642			4,134,230		
<b>Mozzarella</b>						
Jan	281,811	281,234	-0.2	281,811	281,234	-0.2
Feb	259,702	265,322	2.2	541,513	546,556	0.9
Mar	287,215	285,685	-0.5	828,728	832,241	0.4
Apr	276,606	273,771	-1.0	1,105,334	1,106,012	0.1
May	280,745	270,913	-3.5	1,386,079	1,376,925	-0.7
Jun	274,913	260,182	-5.4	1,660,992	1,637,107	-1.4
Jul	271,574			1,932,566		
Aug	266,202			2,198,768		
Sep	266,649			2,465,417		
Oct	276,103			2,741,520		
Nov	273,498			3,015,018		
Dec	288,287			3,303,305		
<b>Other Italian</b>						
Jan	73,986	70,583	-4.6	73,986	70,583	-4.6
Feb	63,809	69,651	9.2	137,795	140,234	1.8
Mar	74,936	72,630	-3.1	212,731	212,864	0.1
Apr	68,678	69,834	1.7	281,409	282,698	0.5
May	70,815	73,657	4.0	352,224	356,355	1.2
Jun	64,153	72,725	13.4	416,377	429,080	3.1
Jul	64,806			481,183		
Aug	69,399			550,582		
Sep	65,704			616,286		
Oct	71,924			688,210		
Nov	72,360			760,570		
Dec	70,355			830,925		

See footnote(s) at end of table.

--continued

**Dairy Products: Production by Product and Month,  
United States, 2007-2008 <sup>1</sup> (continued)**

Product and Month	By Month			Cumulative		
	2007	2008	Change From 2007	2007	2008	Change From 2007
	<i>1,000 Pounds</i>	<i>1,000 Pounds</i>	<i>Percent</i>	<i>1,000 Pounds</i>	<i>1,000 Pounds</i>	<i>Percent</i>
<b>Butter</b>						
Jan	150,595	168,799	12.1	150,595	168,799	12.1
Feb	133,966	146,759	9.5	284,561	315,558	10.9
Mar	138,380	151,933	9.8	422,941	467,491	10.5
Apr	133,029	150,118	12.8	555,970	617,609	11.1
May	123,991	142,599	15.0	679,961	760,208	11.8
Jun	109,980	119,840	9.0	789,941	880,048	11.4
Jul	116,493			906,434		
Aug	110,932			1,017,366		
Sep	112,869			1,130,235		
Oct	130,364			1,260,599		
Nov	130,798			1,391,397		
Dec	141,493			1,532,890		
<b>Nonfat Dry Milk, Human</b>						
Jan	108,023	119,102	10.3	108,023	119,102	10.3
Feb	96,818	118,268	22.2	204,841	237,370	15.9
Mar	112,867	135,244	19.8	317,708	372,614	17.3
Apr	123,022	132,998	8.1	440,730	505,612	14.7
May	115,381	128,921	11.7	556,111	634,533	14.1
Jun	118,173	132,206	11.9	674,284	766,739	13.7
Jul	122,193			796,477		
Aug	102,993			899,470		
Sep	89,844			989,314		
Oct	100,242			1,089,556		
Nov	99,994			1,189,550		
Dec	108,930			1,298,480		
<b>Skim Milk Powders <sup>2</sup></b>						
Jan	9,210	45,614	395.3	9,210	45,614	395.3
Feb	9,628	33,804	251.1	18,838	79,418	321.6
Mar	8,578	34,428	301.4	27,416	113,846	315.3
Apr	15,568	36,137	132.1	42,984	149,983	248.9
May	12,987	45,511	250.4	55,971	195,494	249.3
Jun	16,419	33,873	106.3	72,390	229,367	216.8
Jul	19,212			91,602		
Aug	17,922			109,524		
Sep	14,884			124,408		
Oct	21,438			145,846		
Nov	19,697			165,543		
Dec	36,928			202,471		

See footnote(s) at end of table.

--continued



**Dairy Products: Production by Product and Month,  
United States, 2007-2008<sup>1</sup> (continued)**

Product and Month	By Month			Cumulative		
	2007	2008	Change From 2007	2007	2008	Change From 2007
	<i>1,000 Pounds</i>	<i>1,000 Pounds</i>	<i>Percent</i>	<i>1,000 Pounds</i>	<i>1,000 Pounds</i>	<i>Percent</i>
Dry Whey, Total <sup>3</sup>						
Jan	96,757	91,772	-5.2	96,757	91,772	-5.2
Feb	89,662	88,023	-1.8	186,419	179,795	-3.6
Mar	98,340	97,923	-0.4	284,759	277,718	-2.5
Apr	96,812	96,747	-0.1	381,571	374,465	-1.9
May	99,346	97,046	-2.3	480,917	471,511	-2.0
Jun	94,656	92,508	-2.3	575,573	564,019	-2.0
Jul	95,549			671,122		
Aug	94,454			765,576		
Sep	88,164			853,740		
Oct	88,895			942,635		
Nov	93,605			1,036,240		
Dec	97,621			1,133,861		
Lactose, Human and Animal						
Jan	65,635	62,182	-5.3	65,635	62,182	-5.3
Feb	59,625	60,254	1.1	125,260	122,436	-2.3
Mar	65,209	64,011	-1.8	190,469	186,447	-2.1
Apr	63,405	63,593	0.3	253,874	250,040	-1.5
May	67,924	65,029	-4.3	321,798	315,069	-2.1
Jun	62,953	63,079	0.2	384,751	378,148	-1.7
Jul	65,516			450,267		
Aug	63,946			514,213		
Sep	61,018			575,231		
Oct	61,598			636,829		
Nov	59,059			695,888		
Dec	59,637			755,525		
Whey Protein Concentrate, Total						
Jan	33,280	32,825	-1.4	33,280	32,825	-1.4
Feb	30,166	33,358	10.6	63,446	66,183	4.3
Mar	35,075	35,830	2.2	98,521	102,013	3.5
Apr	33,104	35,170	6.2	131,625	137,183	4.2
May	33,460	36,469	9.0	165,085	173,652	5.2
Jun	33,046	34,274	3.7	198,131	207,926	4.9
Jul	33,252			231,383		
Aug	30,970			262,353		
Sep	31,372			293,725		
Oct	32,283			326,008		
Nov	32,252			358,260		
Dec	35,327			393,587		

See footnote(s) at end of table.

--continued

**Dairy Products: Production by Product and Month,  
United States, 2007-2008 <sup>1</sup> (continued)**

Product and Month	By Month			Cumulative		
	2007	2008	Change From 2007	2007	2008	Change From 2007
	<i>1,000 Pounds</i>	<i>1,000 Pounds</i>	<i>Percent</i>	<i>1,000 Pounds</i>	<i>1,000 Pounds</i>	<i>Percent</i>
<b>Cream Cottage Cheese</b>						
Jan	30,512	27,548	-9.7	30,512	27,548	-9.7
Feb	28,836	25,983	-9.9	59,348	53,531	-9.8
Mar	32,170	28,361	-11.8	91,518	81,892	-10.5
Apr	30,640	26,730	-12.8	122,158	108,622	-11.1
May	32,038	29,521	-7.9	154,196	138,143	-10.4
Jun	30,909	28,201	-8.8	185,105	166,344	-10.1
Jul	30,750			215,855		
Aug	32,519			248,374		
Sep	29,245			277,619		
Oct	29,659			307,278		
Nov	27,268			334,546		
Dec	26,202			360,748		
<b>Lowfat Cottage Cheese</b>						
Jan	34,550	32,838	-5.0	34,550	32,838	-5.0
Feb	31,662	32,100	1.4	66,212	64,938	-1.9
Mar	37,009	35,330	-4.5	103,221	100,268	-2.9
Apr	33,513	34,533	3.0	136,734	134,801	-1.4
May	36,850	35,416	-3.9	173,584	170,217	-1.9
Jun	36,453	32,755	-10.1	210,037	202,972	-3.4
Jul	35,972			246,009		
Aug	39,402			285,411		
Sep	35,559			320,970		
Oct	36,566			357,536		
Nov	32,720			390,256		
Dec	30,588			420,844		
<b>Sour Cream</b>						
Jan	93,117	90,730	-2.6	93,117	90,730	-2.6
Feb	80,828	79,858	-1.2	173,945	170,588	-1.9
Mar	91,140	92,847	1.9	265,085	263,435	-0.6
Apr	87,891	83,225	-5.3	352,976	346,660	-1.8
May	94,972	93,902	-1.1	447,948	440,562	-1.6
Jun	88,709	88,032	-0.8	536,657	528,594	-1.5
Jul	88,577			625,234		
Aug	93,709			718,943		
Sep	84,382			803,325		
Oct	100,133			903,458		
Nov	110,008			1,013,466		
Dec	98,460			1,111,926		

See footnote(s) at end of table.

--continued

**Dairy Products: Production by Product and Month,  
United States, 2007-2008<sup>1</sup> (continued)**

Product and Month	By Month			Cumulative		
	2007	2008	Change From 2007	2007	2008	Change From 2007
	<i>1,000 Gallons</i>	<i>1,000 Gallons</i>	<i>Percent</i>	<i>1,000 Gallons</i>	<i>1,000 Gallons</i>	<i>Percent</i>
<b>Ice Cream, Regular, Hard</b>						
Jan	68,635	63,166	-8.0	68,635	63,166	-8.0
Feb	66,586	65,176	-2.1	135,221	128,342	-5.1
Mar	78,036	75,789	-2.9	213,257	204,131	-4.3
Apr	81,373	75,984	-6.6	294,630	280,115	-4.9
May	86,180	80,737	-6.3	380,810	360,852	-5.2
Jun	87,058	89,993	3.4	467,868	450,845	-3.6
Jul	84,428			552,296		
Aug	79,740			632,036		
Sep	70,121			702,157		
Oct	70,034			772,191		
Nov	56,039			828,230		
Dec	53,521			881,751		
<b>Ice Cream, Lowfat, Total</b>						
Jan	27,158	24,680	-9.1	27,158	24,680	-9.1
Feb	27,169	28,051	3.2	54,327	52,731	-2.9
Mar	33,493	33,533	0.1	87,820	86,264	-1.8
Apr	35,004	36,992	5.7	122,824	123,256	0.4
May	39,094	39,020	-0.2	161,918	162,276	0.2
Jun	40,572	43,351	6.8	202,490	205,627	1.5
Jul	38,223			240,713		
Aug	36,887			277,600		
Sep	30,257			307,857		
Oct	29,258			337,115		
Nov	23,342			360,457		
Dec	22,163			382,620		
<b>Sherbet, Hard</b>						
Jan	3,941	4,027	2.2	3,941	4,027	2.2
Feb	4,380	4,232	-3.4	8,321	8,259	-0.7
Mar	5,630	5,633	0.1	13,951	13,892	-0.4
Apr	6,115	5,670	-7.3	20,066	19,562	-2.5
May	6,092	5,568	-8.6	26,158	25,130	-3.9
Jun	6,167	5,555	-9.9	32,325	30,685	-5.1
Jul	5,370			37,695		
Aug	5,028			42,723		
Sep	4,423			47,146		
Oct	4,145			51,291		
Nov	3,505			54,796		
Dec	3,443			58,239		

See footnote(s) at end of table.

--continued

**Dairy Products: Production by Product and Month,  
United States, 2007-2008 <sup>1</sup> (continued)**

Product and Month	By Month			Cumulative		
	2007	2008	Change From 2007	2007	2008	Change From 2007
	<i>1,000 Pounds</i>	<i>1,000 Pounds</i>	<i>Percent</i>	<i>1,000 Pounds</i>	<i>1,000 Pounds</i>	<i>Percent</i>
Yogurt, Plain & Flavored						
Jan	287,100	296,725	3.4	287,100	296,725	3.4
Feb	279,124	299,187	7.2	566,224	595,912	5.2
Mar	315,873	317,352	0.5	882,097	913,264	3.5
Apr	294,148	300,300	2.1	1,176,245	1,213,564	3.2
May	300,437	299,007	-0.5	1,476,682	1,512,571	2.4
Jun	284,869	293,290	3.0	1,761,551	1,805,861	2.5
Jul	278,479			2,040,030		
Aug	299,954			2,339,984		
Sep	309,925			2,649,909		
Oct	301,028			2,950,937		
Nov	250,162			3,201,099		
Dec	276,628			3,477,727		
	<i>1,000 Gallons</i>	<i>1,000 Gallons</i>	<i>Percent</i>	<i>1,000 Gallons</i>	<i>1,000 Gallons</i>	<i>Percent</i>
Yogurt, Frozen						
Jan	4,291	3,577	-16.6	4,291	3,577	-16.6
Feb	4,300	4,133	-3.9	8,591	7,710	-10.3
Mar	5,706	5,856	2.6	14,297	13,566	-5.1
Apr	5,867	6,201	5.7	20,164	19,767	-2.0
May	5,838	6,722	15.1	26,002	26,489	1.9
Jun	6,391	6,747	5.6	32,393	33,236	2.6
Jul	5,554			37,947		
Aug	5,777			43,724		
Sep	5,040			48,764		
Oct	4,402			53,166		
Nov	4,026			57,192		
Dec	3,520			60,712		

<sup>1</sup> May 2008 data revised.

<sup>2</sup> Includes protein standardized and blends.

<sup>3</sup> Excludes all modified dry whey products.

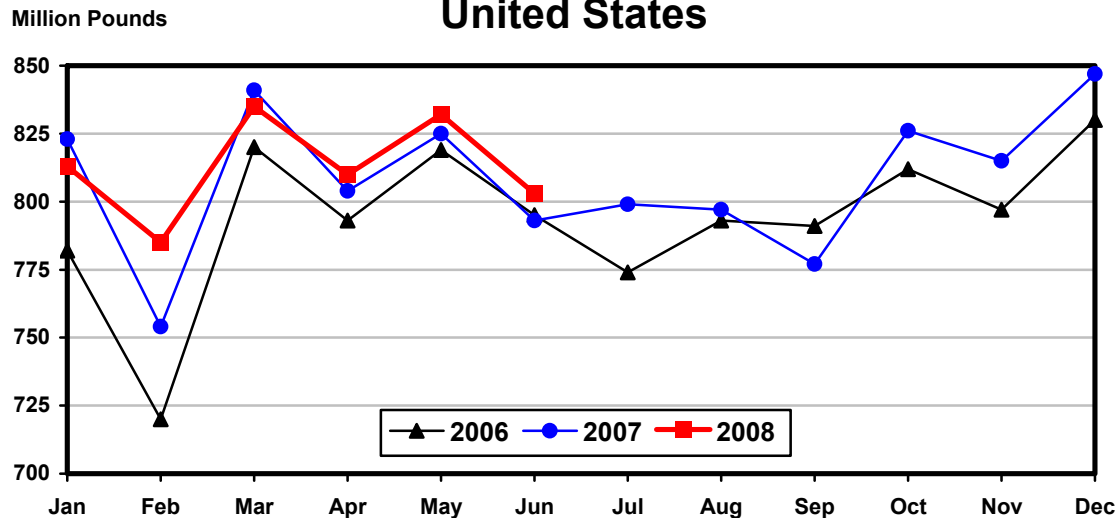
**Total Cheese, Excluding Cottage Cheese: Production by State and United States, June 2007-2008**

State	Jun 2007	May <sup>1</sup> 2008	Jun 2008	Change From	
				Jun 2007	May 2008
	<i>1,000 Pounds</i>	<i>1,000 Pounds</i>	<i>1,000 Pounds</i>	<i>Percent</i>	<i>Percent</i>
CA	189,092	179,975	172,402	-8.8	-4.2
ID	64,355	67,104	65,715	2.1	-2.1
IL	6,222	6,161	5,945	-4.5	-3.5
IA	11,349	14,237	13,314	17.3	-6.5
MN	50,525	55,364	52,261	3.4	-5.6
NM	48,615	50,757	47,186	-2.9	-7.0
NY	57,753	55,392	53,868	-6.7	-2.8
OH	15,808	16,069	14,868	-5.9	-7.5
PA	32,092	35,217	34,782	8.4	-1.2
SD	17,195	18,936	17,735	3.1	-6.3
UT	8,471	9,330	9,850	16.3	5.6
VT	10,622	12,625	10,624		-15.8
WI	203,178	208,754	206,300	1.5	-1.2
Oth Sts <sup>2</sup>	77,302	101,836	98,413	27.3	-3.4
US	792,579	831,757	803,263	1.3	-3.4
Atlantic	106,915	109,680	105,639	-1.2	-3.7
Central	334,993	366,618	354,557	5.8	-3.3
West	350,671	355,459	343,067	-2.2	-3.5

<sup>1</sup> Revised.

<sup>2</sup> States not shown when fewer than 3 plants reported or individual plant operations could be disclosed. Percent change shown only when comparable States are included in the calculation.

**Total Cheese Production  
United States**



**American Cheese: Production by State and United States, June 2007-2008**

State	Jun 2007	May <sup>1</sup> 2008	Jun 2008	Change From	
				Jun 2007	May 2008
	<i>1,000 Pounds</i>	<i>1,000 Pounds</i>	<i>1,000 Pounds</i>	<i>Percent</i>	<i>Percent</i>
CA	67,250	57,905	52,813	-21.5	-8.8
IA	9,186	11,622	10,858	18.2	-6.6
MN	46,383	46,137	44,282	-4.5	-4.0
OH	2,026	1,717	871	-57.0	-49.3
OR	8,902	13,857	13,919	56.4	0.4
WI	64,056	71,421	68,400	6.8	-4.2
Oth Sts <sup>2</sup>	117,719	148,684	141,367	20.1	-4.9
US	315,522	351,343	332,510	5.4	-5.4
Atlantic	10,937	14,197	11,931	9.1	-16.0
Central	134,005	160,849	151,166	12.8	-6.0
West	170,580	176,297	169,413	-0.7	-3.9

<sup>1</sup> Revised.

<sup>2</sup> States not shown when fewer than 3 plants reported or individual plant operations could be disclosed. Percent change shown only when comparable States are included in the calculation.

**Cheddar Cheese: Production by State and United States, June 2007-2008**

State	Jun 2007	May <sup>1</sup> 2008	Jun 2008	Change From	
				Jun 2007	May 2008
	<i>1,000 Pounds</i>	<i>1,000 Pounds</i>	<i>1,000 Pounds</i>	<i>Percent</i>	<i>Percent</i>
CA	39,539	33,074	31,139	-21.2	-5.9
IA	6,056	8,260	7,858	29.8	-4.9
MN	41,895	42,298	41,614	-0.7	-1.6
OH	1,805	1,459	649	-64.0	-55.5
WI	52,320	56,515	53,000	1.3	-6.2
Oth Sts <sup>2</sup>	109,715	132,133	122,431	11.6	-7.3
US	251,330	273,739	256,691	2.1	-6.2
Atlantic	10,204	13,694	11,404	11.8	-16.7
Central	111,826	131,538	122,487	9.5	-6.9
West	129,300	128,507	122,800	-5.0	-4.4

<sup>1</sup> Revised.

<sup>2</sup> States not shown when fewer than 3 plants reported or individual plant operations could be disclosed. Percent change shown only when comparable States are included in the calculation.

**Italian Cheese, Total: Production by State and United States, June 2007-2008**

State	Jun 2007	May <sup>1</sup> 2008	Jun 2008	Change From	
				Jun 2007	May 2008
	<i>1,000 Pounds</i>	<i>1,000 Pounds</i>	<i>1,000 Pounds</i>	<i>Percent</i>	<i>Percent</i>
CA	105,133	102,146	100,479	-4.4	-1.6
ID	11,514	11,586	11,317	-1.7	-2.3
NY	29,864	30,032	28,402	-4.9	-5.4
PA	21,359	23,041	21,937	2.7	-4.8
SD	9,704				
WI	95,102	96,725	95,203	0.1	-1.6
Oth Sts <sup>2</sup>	66,390	81,040	75,569		
US	339,066	344,570	332,907	-1.8	-3.4
Atlantic	59,549	61,611	58,354	-2.0	-5.3
Central	128,030	134,615	130,730	2.1	-2.9
West	151,487	148,344	143,823	-5.1	-3.0

<sup>1</sup> Revised.

<sup>2</sup> States not shown when fewer than 3 plants reported or individual plant operations could be disclosed. Percent change shown only when comparable States are included in the calculation.

**Mozzarella Cheese: Production by State and United States, June 2007-2008**

State	Jun 2007	May <sup>1</sup> 2008	Jun 2008	Change From	
				Jun 2007	May 2008
	<i>1,000 Pounds</i>	<i>1,000 Pounds</i>	<i>1,000 Pounds</i>	<i>Percent</i>	<i>Percent</i>
CA	94,099	92,222	90,235	-4.1	-2.2
NY	17,096	17,047	15,982	-6.5	-6.2
PA	18,508	19,574	18,798	1.6	-4.0
WI	70,921	67,983	66,100	-6.8	-2.8
Oth Sts <sup>2</sup>	74,289	74,087	69,067	-7.0	-6.8
US	274,913	270,913	260,182	-5.4	-4.0
Atlantic	41,238	42,460	40,130	-2.7	-5.5
Central	96,220	92,882	89,375	-7.1	-3.8
West	137,455	135,571	130,677	-4.9	-3.6

<sup>1</sup> Revised.

<sup>2</sup> States not shown when fewer than 3 plants reported or individual plant operations could be disclosed. Percent change shown only when comparable States are included in the calculation.

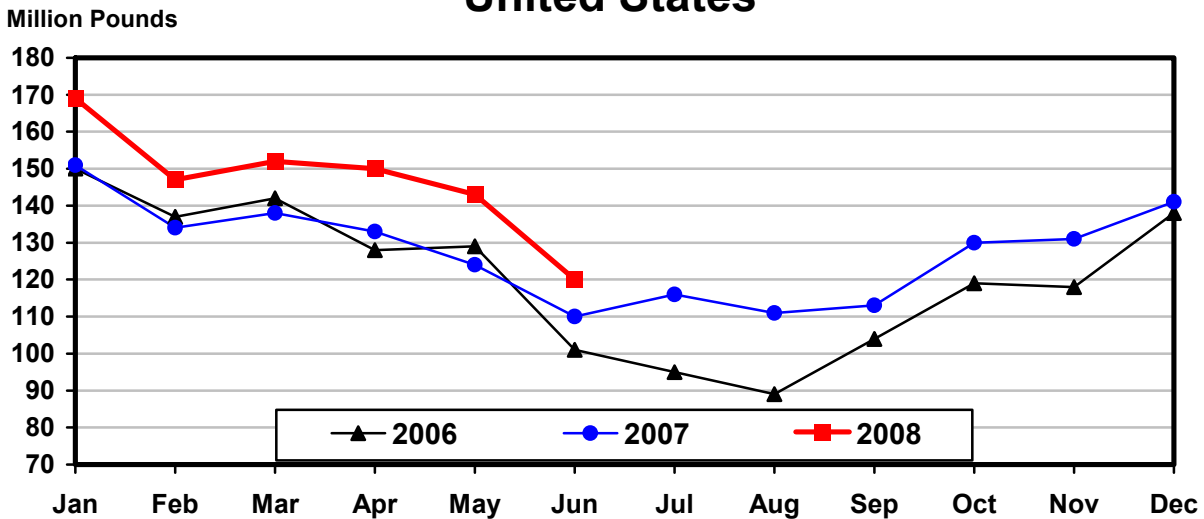
**Butter: Production by State and United States, June 2007-2008**

State	Jun 2007	May <sup>1</sup> 2008	Jun 2008	Change From	
				Jun 2007	May 2008
	<i>1,000 Pounds</i>	<i>1,000 Pounds</i>	<i>1,000 Pounds</i>	<i>Percent</i>	<i>Percent</i>
CA	36,099	48,200	44,127	22.2	-8.5
NY	879	2,184	1,374	56.3	-37.1
PA	5,171	7,288	5,543	7.2	-23.9
WI	25,318	30,182	25,500	0.7	-15.5
Oth Sts <sup>2</sup>	42,513	54,745	43,296	1.8	-20.9
US	109,980	142,599	119,840	9.0	-16.0
Atlantic	8,075	11,680	9,006	11.5	-22.9
Central	46,670	60,062	46,448	-0.5	-22.7
West	55,235	70,857	64,386	16.6	-9.1

<sup>1</sup> Revised.

<sup>2</sup> States not shown when fewer than 3 plants reported or individual plant operations could be disclosed. Percent change shown only when comparable States are included in the calculation.

## Total Butter Production United States





**Nonfat Dry Milk, Human: Production by State  
and United States, June 2007-2008**

State	Jun 2007	May <sup>1</sup> 2008	Jun 2008	Change From	
				Jun 2007	May 2008
	<i>1,000 Pounds</i>	<i>1,000 Pounds</i>	<i>1,000 Pounds</i>	<i>Percent</i>	<i>Percent</i>
CA	59,811	64,429	70,019	17.1	8.7
Oth Sts <sup>2</sup>	58,362	64,492	62,187	6.6	-3.6
US	118,173	128,921	132,206	11.9	2.5
Atlantic	14,023	24,870	22,452	60.1	-9.7
Central	15,190	21,428	21,991	44.8	2.6
West	88,960	82,623	87,763	-1.3	6.2

<sup>1</sup> Revised.

<sup>2</sup> States not shown when fewer than 3 plants reported or individual plant operations could be disclosed. Percent change shown only when comparable States are included in the calculation.

**Dry Whey, Human: Production by State  
and United States, June 2007-2008**

State	Jun 2007	May <sup>1</sup> 2008	Jun 2008	Change From	
				Jun 2007	May 2008
	<i>1,000 Pounds</i>	<i>1,000 Pounds</i>	<i>1,000 Pounds</i>	<i>Percent</i>	<i>Percent</i>
CA	6,994				
NY	10,674	11,419	10,755	0.8	-5.8
WI	24,897	28,098	26,000	4.4	-7.5
Oth Sts <sup>2</sup>	46,602	51,830	49,759		
US	89,167	91,347	86,514	-3.0	-5.3
Atlantic	20,179	21,267	19,561	-3.1	-8.0
Central	41,298	43,849	40,625	-1.6	-7.4
West	27,690	26,231	26,328	-4.9	0.4

<sup>1</sup> Revised.

<sup>2</sup> States not shown when fewer than 3 plants reported or individual plant operations could be disclosed. Percent change shown only when comparable States are included in the calculation.

**Ice Cream, Regular, Hard: Production by State and United States,  
June 2007-2008**

State	Jun 2007	May <sup>1</sup> 2008	Jun 2008	Change From	
				Jun 2007	May 2008
	<i>1,000 Gallons</i>	<i>1,000 Gallons</i>	<i>1,000 Gallons</i>	<i>Percent</i>	<i>Percent</i>
CA	13,865	12,461	15,139	9.2	21.5
FL	1,505				
IN	6,123	6,057	7,258	18.5	19.8
MO	2,510	2,551	2,044	-18.6	-19.9
NY	2,605	2,304	2,798	7.4	21.4
NC	1,672	1,311	1,457	-12.9	11.1
OH	2,330	2,062	2,325	-0.2	12.8
OR	1,721	1,630	1,760	2.3	8.0
PA	3,508	3,041	3,241	-7.6	6.6
TN	1,514	1,446	1,578	4.2	9.1
TX	5,925	5,830	6,420	8.4	10.1
UT	2,785	2,503	2,933	5.3	17.2
Oth Sts <sup>2</sup>	40,995	39,541	43,040		
US	87,058	80,737	89,993	3.4	11.5
N Atl	12,662	12,429	12,895	1.8	3.7
S Atl	7,111	6,477	7,325	3.0	13.1
E N Cen	15,200	14,451	16,043	5.5	11.0
W N Cen	18,541	15,757	18,737	1.1	18.9
S Cen	11,739	11,354	12,182	3.8	7.3
West	21,805	20,269	22,811	4.6	12.5

<sup>1</sup> Revised.

<sup>2</sup> States not shown when fewer than 3 plants reported or individual plant operations could be disclosed. Percent change shown only when comparable States are included in the calculation.

**Canned Milk and Dry Milk Products: Manufacturers' Shipments,  
and Stocks, June, 2007-2008**

Product	Jun 2007	May 2008 <sup>1</sup>	Jun 2008	Change From	
				Jun 2007	May 2008
	<i>1,000 Pounds</i>	<i>1,000 Pounds</i>	<i>1,000 Pounds</i>	<i>Percent</i>	<i>Percent</i>
	Manufacturers' Shipments <sup>2</sup>				
Nonfat Dry Milk, Human	106,551	132,814	132,513	24.4	-0.2
	<i>1,000 Pounds</i>	<i>1,000 Pounds</i>	<i>1,000 Pounds</i>	<i>Percent</i>	<i>Percent</i>
	Manufacturers' Stocks End-of-Month <sup>3</sup>				
Canned Evaporated and Condensed Whole Milk	64,716	63,541	79,756	23.2	25.5
Nonfat Dry Milk, Human	103,568	124,366	126,730	22.4	1.9
Dry Buttermilk, Total	7,527	9,746	9,814	30.4	0.7

<sup>1</sup> Revised.

<sup>2</sup> For dry products, shipments of bulk goods only.

<sup>3</sup> Stocks held by manufacturers at all points and in transit.

**Procedures and Reliability:** Estimates included in this report are based on data provided each month by manufacturers of these products. In 32 States, the State Departments of Agriculture assist in collection of data, which eliminates duplicate reporting and reduces respondent burden. Data are collected by mail, personal and telephone interviews following the close of each month. There were 1,109 manufacturers that made one or more products in 2007. Each month, reports are generally received from all dairy plants in States with small numbers of plants. In States with large numbers of plants, survey procedures are designed to obtain monthly reports from all large plants and from a sample of small plants. Monthly estimates are based upon returns from about 70 percent of the plants which account for 70 to 90 percent of the total production of major dairy products.

**Revision Policy:** Monthly estimates are subject to revision the month following the preliminary estimates. Annual estimates are published in the "**Dairy Products**" report published each April which includes any revisions made to current and previous year. An attempt is made to get information from all plants for preparing these estimates

### Information Contacts

Listed below are the commodity specialists in the Livestock Branch of the National Agricultural Statistics Service to contact for additional information.

Dan Kerestes, Chief, Livestock Branch ..... (202) 720-3570

#### Livestock Section

Scott Hollis, Head, Livestock Section ..... (202) 690-2424  
 Jim Collom - Dairy Products ..... (202) 690-3236  
 Joe Gaynor - Dairy Products Prices ..... (202) 690-2168  
 Jason Hardegree - Cattle, Cattle on Feed ..... (202) 720-3040  
 Benita Hodge - Livestock Slaughter ..... (515) 284-4340  
 Everett Olbert - Sheep and Goats ..... (202) 720-4751  
 Mike Miller - Milk Production and Milk Cows ..... (202) 720-3278  
 Nick Streff - Hogs and Pigs ..... (202) 720-3106

## ACCESS TO REPORTS!!

---

For your convenience, there are several ways to obtain NASS reports, data products, and services:

### INTERNET ACCESS

All NASS reports are available free of charge on the worldwide Internet. For access, connect to the Internet and go to the NASS Home Page at: [www.nass.usda.gov](http://www.nass.usda.gov).

### E-MAIL SUBSCRIPTION

All NASS reports are available by subscription free of charge direct to your e-mail address. Starting with the NASS Home Page at [www.nass.usda.gov](http://www.nass.usda.gov), under the right navigation, *Receive reports by Email*, click on **National** or **State**. Follow the instructions on the screen.

-----

### PRINTED REPORTS OR DATA PRODUCTS

**CALL OUR TOLL-FREE ORDER DESK: 800-999-6779 (U.S. and Canada)**  
**Other areas, please call 703-605-6220      FAX: 703-605-6900**  
**(Visa, MasterCard, check, or money order acceptable for payment.)**

-----

### ASSISTANCE

For **assistance** with general agricultural statistics or further information about NASS or its products or services, contact the **Agricultural Statistics Hotline** at **800-727-9540**, 7:30 a.m. to 4:00 p.m. ET, or e-mail: [nass@nass.usda.gov](mailto:nass@nass.usda.gov).

The U.S. Department of Agriculture (USDA) prohibits discrimination in all its programs and activities on the basis of race, color, national origin, age, disability, and where applicable, sex, marital status, familial status, parental status, religion, sexual orientation, genetic information, political beliefs, reprisal, or because all or a part of an individual's income is derived from any public assistance program. (Not all prohibited bases apply to all programs.) Persons with disabilities who require alternative means for communication of program information (Braille, large print, audiotape, etc.) should contact USDA's TARGET Center at (202) 720-2600 (voice and TDD).

To file a complaint of discrimination, write to USDA, Director, Office of Civil Rights, 1400 Independence Avenue, S.W., Washington, D.C. 20250-9410, or call (800) 795-3272 (voice) or (202) 720-6382 (TDD). USDA is an equal opportunity provider and employer.