
Released October 3, 2008, by the National Agricultural Statistics Service (NASS), Agricultural Statistics Board, U.S. Department of Agriculture. For information on *Dairy Products* call Jim Collom at (202) 690-3236, office hours 7:00 a.m. to 3:30 p.m. ET.

August 2008 Highlights

Total cheese output (excluding cottage cheese) was 821 million pounds, 3.0 percent above August 2007 and 1.0 percent above July 2008.

Italian type cheese production totaled 332 million pounds, 1.0 percent below August 2007 and 0.1 percent below July 2008.

American type cheese production totaled 339 million pounds, 8.6 percent above August 2007 but 0.8 percent below July 2008.

Butter production was 116 million pounds, 4.4 percent above August 2007 and 1.4 percent above July 2008.

Dry Milk Powders: (comparisons with August 2007)

Nonfat dry milk, human --- 117 million pounds, up 14.0 percent.

Skim milk powders --- 26.6 million pounds, up 48.7 percent.

Whey products: (comparisons with August 2007)

Dry whey, total --- 87.6 million pounds, down 7.2 percent.

Lactose, human and animal --- 63.0 million pounds, down 1.4 percent.

Whey protein concentrate, total --- 34.4 million pounds, up 11.0 percent.

Frozen products: (comparisons with August 2007)

Ice cream, Regular (hard) --- 78.6 million gallons, down 1.4 percent.

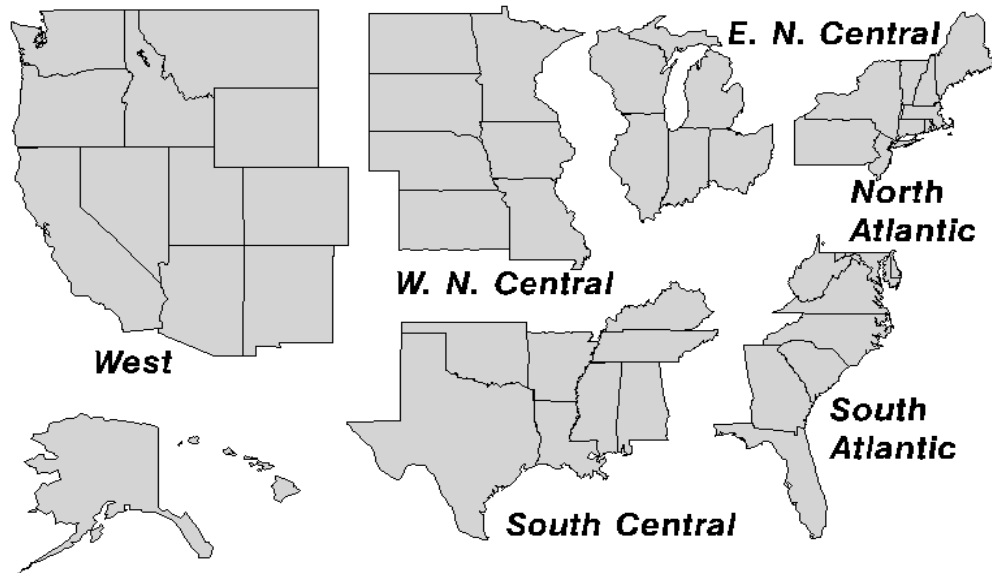
Ice cream, Lowfat (total) --- 36.7 million gallons, down 0.4 percent.

Sherbet (hard) --- 4.68 million gallons, down 7.0 percent.

Frozen Yogurt (total) --- 4.87 million gallons, down 15.8 percent.

U. S. Geographic Regions Dairy Products

If a region is unable to be published for confidentiality reasons, it will be combined with other regions when possible. For example, if North Atlantic can not be published, it will be combined with South Atlantic to publish Atlantic. The West North Central and East North Central will be combined, if necessary, to form North Central. In the event that neither could be published, they may be combined with South Central to publish Central. Some tables will have only limited regions shown, therefore the regions may not add to the United States total.



Contents

Page

Dairy Products: Production by Product, United States	1
Whey and Modified Whey Products: Production, Stocks, and Prices, United States.....	2
Dairy Products: Production by Product and Month, United States.....	3
Select Commodities by State and United States	10
Canned Milk and Dry Milk Products: Manufacturers' Shipments and Stocks.....	15
Procedures and Reliability	16
Information Contacts	16

**Dairy Products: Production by Product,
United States, August, 2007-2008**

Product	Aug 2007	Jul 2008 ¹	Aug 2008	Change From	
				Aug 2007	Jul 2008
	<i>1,000 Pounds</i>	<i>1,000 Pounds</i>	<i>1,000 Pounds</i>	<i>Percent</i>	<i>Percent</i>
Butter	110,932	114,245	115,819	4.4	1.4
Cheese					
American Types ²	311,892	341,361	338,622	8.6	-0.8
Cheddar	240,499	264,875	256,236	6.5	-3.3
Swiss	25,844	26,756	26,254	1.6	-1.9
Brick and Muenster	10,583	11,849	12,089	14.2	2.0
Cream and Neufchatel	72,152	60,606	68,783	-4.7	13.5
Hispanic	16,181	16,158	16,708	3.3	3.4
Mozzarella	266,202	259,479	258,641	-2.8	-0.3
Other Italian Types	69,399	73,216	73,635	6.1	0.6
Total Italian Types	335,601	332,695	332,276	-1.0	-0.1
All Other Types	24,780	23,751	26,539	7.1	11.7
Total	797,033	813,176	821,271	3.0	1.0
Cottage Cheese, Curd ³	42,250	37,503	38,326	-9.3	2.2
Cottage Cheese, Cream ⁴	32,519	29,220	28,996	-10.8	-0.8
Cottage Cheese, Lowfat ⁵	39,402	33,539	33,698	-14.5	0.5
Canned Evaporated and Condensed Whole Milk	44,876	50,819	51,193	14.1	0.7
Dry Whole Milk	1,850	5,050	4,127	123.1	-18.3
Nonfat Dry Milk, Human	102,993	135,614	117,420	14.0	-13.4
Skim Milk Powders ⁶	17,922	27,120	26,649	48.7	-1.7
Dry Skim Milk, Animal	325	720	1,003	208.6	39.3
Dry Buttermilk	5,803	5,746	5,918	2.0	3.0
Sour Cream	93,709	88,379	91,129	-2.8	3.1
Yogurt, Plain & Flavored	299,954	282,221	293,357	-2.2	3.9
	<i>1,000 Gallons</i>	<i>1,000 Gallons</i>	<i>1,000 Gallons</i>	<i>Percent</i>	<i>Percent</i>
Frozen Products					
Ice Cream, Regular, Hard	79,740	83,458	78,621	-1.4	-5.8
Ice Cream, Lowfat, Hard	12,424	13,183	12,514	0.7	-5.1
Ice Cream, Lowfat, Soft	24,463	26,998	24,216	-1.0	-10.3
Ice Cream, Lowfat, Total	36,887	40,181	36,730	-0.4	-8.6
Ice Cream, Nonfat, Hard	1,300	1,017	1,288	-0.9	26.6
Sherbet, Hard	5,028	5,222	4,677	-7.0	-10.4
Water and Juice Ices	5,449	6,555	5,967	9.5	-9.0
Frozen Yogurt, Total	5,777	5,462	4,866	-15.8	-10.9
Regular & Lowfat, Hard	2,022	1,914	1,899	-6.1	-0.8
Nonfat, Hard	607	698	590	-2.8	-15.5
Other Frozen Dairy Products	1,196	1,438	1,279	6.9	-11.1
Mix for Frozen Products					
Ice Cream Mix	45,373	47,593	43,471	-4.2	-8.7
Ice Cream, Lowfat, Mix	21,573	23,105	21,087	-2.3	-8.7
Ice Cream, Nonfat, Mix	725	644	756	4.3	17.4
Sherbet Mix	3,367	3,334	3,100	-7.9	-7.0
Yogurt Mix	3,096	3,310	2,949	-4.7	-10.9

¹ Revised.

² Includes Cheddar, Colby, Monterey, and Jack.

³ Mostly used for processing into cream or lowfat cottage cheese.

⁴ Fat content 4 percent or more.

⁵ Fat content less than 4 percent.

⁶ Includes protein standardized and blends.

**Whey and Modified Whey Products: Production, Stocks,
and Prices, United States, August, 2007-2008**

Product	Aug 2007	Jul 2008 ¹	Aug 2008	Change From	
				Aug 2007	Jul 2008
Production					
	<i>1,000 Pounds</i>	<i>1,000 Pounds</i>	<i>1,000 Pounds</i>	<i>Percent</i>	<i>Percent</i>
Condensed Whey, Solids Content ²					
Sweet-Type, Human	9,296	10,745	10,712	15.2	-0.3
Dry Whey Products					
Dry Whey, Human	89,273	85,878	83,107	-6.9	-3.2
Dry Whey, Animal	5,181	3,943	4,526	-12.6	14.8
Dry Whey, Total	94,454	89,821	87,633	-7.2	-2.4
Reduced Lactose and Minerals					
Human Food	3,139	3,349	2,425	-22.7	-27.6
Animal Feed	4,417	5,015	5,060	14.6	0.9
Lactose, Human and Animal	63,946	64,386	63,048	-1.4	-2.1
Whey					
Protein Concentrate					
Human ³	27,786	34,040	32,404	16.6	-4.8
Animal ³	3,184	1,773	1,965	-38.3	10.8
Total ³	30,970	35,813	34,369	11.0	-4.0
25.0-49.9 Percent ⁴	20,374	25,179	24,088	18.2	-4.3
50.0-89.9 Percent ⁴	10,596	10,634	10,281	-3.0	-3.3
Protein Isolates ⁵	3,296	3,183	3,747	13.7	17.7
Manufacturers' Stocks End-of-Month ⁶					
	<i>1,000 Pounds</i>	<i>1,000 Pounds</i>	<i>1,000 Pounds</i>	<i>Percent</i>	<i>Percent</i>
Dry Whey Products					
Dry Whey, Human	65,824	54,916	57,753	-12.3	5.2
Dry Whey, Animal	7,360	5,176	5,823	-20.9	12.5
Dry Whey, Total	73,184	60,092	63,576	-13.1	5.8
Reduced Lactose and Minerals					
Human and Animal ⁷	10,520	16,548	18,266	73.6	10.4
Lactose, Human and Animal	54,685	85,590	89,545	63.7	4.6
Whey					
Protein Concentrate					
Human ³	24,799	40,652	39,416	58.9	-3.0
Animal ³	2,251	789	825	-63.3	4.6
Total ³	27,050	41,441	40,241	48.8	-2.9
25.0-49.9 Percent ⁴	18,310	27,247	27,601	50.7	1.3
50.0-89.9 Percent ⁴	8,740	14,194	12,640	44.6	-10.9
Manufacturers' Selling Price ⁸					
	<i>Cents per Pound</i>	<i>Cents per Pound</i>	<i>Cents per Pound</i>	<i>Cents Change</i>	<i>Cents Change</i>
Dry Whey, Animal	46.6	20.7	17.1	-29.5	-3.6

¹ Revised.

² Final marketable product only. Does not include quantity used or shipped to another plant for further processing into dry whey or modified whey products. Does not include sweet-type, animal whey.

³ Whey Protein Concentrate, 25.0 to 89.9 percent.

⁴ Whey Protein Concentrate, Human and Animal.

⁵ Whey Protein Isolate, 90.0 percent or greater.

⁶ Stocks held by manufacturers at all points and in transit.

⁷ Reduced lactose and minerals stocks combined to avoid disclosure of individual operations.

⁸ Prices for bulk goods, f.o.b. plant. Average monthly prices reported by firms.

**Dairy Products: Production by Product and Month,
United States, 2007-2008¹**

Product and Month	By Month			Cumulative		
	2007	2008	Change From 2007	2007	2008	Change From 2007
	<i>1,000 Pounds</i>	<i>1,000 Pounds</i>	<i>Percent</i>	<i>1,000 Pounds</i>	<i>1,000 Pounds</i>	<i>Percent</i>
Total Cheese						
Jan	822,889	812,722	-1.2	822,889	812,722	-1.2
Feb	754,132	784,649	4.0	1,577,021	1,597,371	1.3
Mar	840,522	834,716	-0.7	2,417,543	2,432,087	0.6
Apr	803,834	810,178	0.8	3,221,377	3,242,265	0.6
May	824,627	831,757	0.9	4,046,004	4,074,022	0.7
Jun	792,579	809,436	2.1	4,838,583	4,883,458	0.9
Jul	799,498	813,176	1.7	5,638,081	5,696,634	1.0
Aug	797,033	821,271	3.0	6,435,114	6,517,905	1.3
Sep	777,163			7,212,277		
Oct	825,769			8,038,046		
Nov	815,175			8,853,221		
Dec	847,278			9,700,499		
American Cheese						
Jan	339,636	333,952	-1.7	339,636	333,952	-1.7
Feb	306,214	319,335	4.3	645,850	653,287	1.2
Mar	339,364	339,069	-0.1	985,214	992,356	0.7
Apr	325,940	337,392	3.5	1,311,154	1,329,748	1.4
May	332,537	351,343	5.7	1,643,691	1,681,091	2.3
Jun	315,522	335,185	6.2	1,959,213	2,016,276	2.9
Jul	324,709	341,361	5.1	2,283,922	2,357,637	3.2
Aug	311,892	338,622	8.6	2,595,814	2,696,259	3.9
Sep	299,616			2,895,430		
Oct	321,308			3,216,738		
Nov	324,668			3,541,406		
Dec	336,421			3,877,827		
Cheddar Cheese						
Jan	272,310	262,443	-3.6	272,310	262,443	-3.6
Feb	249,177	251,251	0.8	521,487	513,694	-1.5
Mar	270,971	265,335	-2.1	792,458	779,029	-1.7
Apr	257,600	267,984	4.0	1,050,058	1,047,013	-0.3
May	265,704	273,739	3.0	1,315,762	1,320,752	0.4
Jun	251,330	259,300	3.2	1,567,092	1,580,052	0.8
Jul	255,335	264,875	3.7	1,822,427	1,844,927	1.2
Aug	240,499	256,236	6.5	2,062,926	2,101,163	1.9
Sep	230,123			2,293,049		
Oct	245,236			2,538,285		
Nov	253,180			2,791,465		
Dec	265,823			3,057,288		

See footnote(s) at end of table.

--continued

**Dairy Products: Production by Product and Month,
United States, 2007-2008¹ (continued)**

Product and Month	By Month			Cumulative		
	2007	2008	Change From 2007	2007	2008	Change From 2007
	<i>1,000 Pounds</i>	<i>1,000 Pounds</i>	<i>Percent</i>	<i>1,000 Pounds</i>	<i>1,000 Pounds</i>	<i>Percent</i>
Italian Cheese						
Jan	355,797	351,817	-1.1	355,797	351,817	-1.1
Feb	323,511	334,973	3.5	679,308	686,790	1.1
Mar	362,151	358,315	-1.1	1,041,459	1,045,105	0.4
Apr	345,284	343,605	-0.5	1,386,743	1,388,710	0.1
May	351,560	344,570	-2.0	1,738,303	1,733,280	-0.3
Jun	339,066	332,924	-1.8	2,077,369	2,066,204	-0.5
Jul	336,380	332,695	-1.1	2,413,749	2,398,899	-0.6
Aug	335,601	332,276	-1.0	2,749,350	2,731,175	-0.7
Sep	332,353			3,081,703		
Oct	348,027			3,429,730		
Nov	345,858			3,775,588		
Dec	358,642			4,134,230		
Mozzarella						
Jan	281,811	281,234	-0.2	281,811	281,234	-0.2
Feb	259,702	265,322	2.2	541,513	546,556	0.9
Mar	287,215	285,685	-0.5	828,728	832,241	0.4
Apr	276,606	273,771	-1.0	1,105,334	1,106,012	0.1
May	280,745	270,913	-3.5	1,386,079	1,376,925	-0.7
Jun	274,913	259,982	-5.4	1,660,992	1,636,907	-1.5
Jul	271,574	259,479	-4.5	1,932,566	1,896,386	-1.9
Aug	266,202	258,641	-2.8	2,198,768	2,155,027	-2.0
Sep	266,649			2,465,417		
Oct	276,103			2,741,520		
Nov	273,498			3,015,018		
Dec	288,287			3,303,305		
Other Italian						
Jan	73,986	70,583	-4.6	73,986	70,583	-4.6
Feb	63,809	69,651	9.2	137,795	140,234	1.8
Mar	74,936	72,630	-3.1	212,731	212,864	0.1
Apr	68,678	69,834	1.7	281,409	282,698	0.5
May	70,815	73,657	4.0	352,224	356,355	1.2
Jun	64,153	72,942	13.7	416,377	429,297	3.1
Jul	64,806	73,216	13.0	481,183	502,513	4.4
Aug	69,399	73,635	6.1	550,582	576,148	4.6
Sep	65,704			616,286		
Oct	71,924			688,210		
Nov	72,360			760,570		
Dec	70,355			830,925		

See footnote(s) at end of table.

--continued

**Dairy Products: Production by Product and Month,
United States, 2007-2008 ¹ (continued)**

Product and Month	By Month			Cumulative		
	2007	2008	Change From 2007	2007	2008	Change From 2007
	<i>1,000 Pounds</i>	<i>1,000 Pounds</i>	<i>Percent</i>	<i>1,000 Pounds</i>	<i>1,000 Pounds</i>	<i>Percent</i>
Butter						
Jan	150,595	168,799	12.1	150,595	168,799	12.1
Feb	133,966	146,759	9.5	284,561	315,558	10.9
Mar	138,380	151,933	9.8	422,941	467,491	10.5
Apr	133,029	150,118	12.8	555,970	617,609	11.1
May	123,991	142,599	15.0	679,961	760,208	11.8
Jun	109,980	119,800	8.9	789,941	880,008	11.4
Jul	116,493	114,245	-1.9	906,434	994,253	9.7
Aug	110,932	115,819	4.4	1,017,366	1,110,072	9.1
Sep	112,869			1,130,235		
Oct	130,364			1,260,599		
Nov	130,798			1,391,397		
Dec	141,493			1,532,890		
Nonfat Dry Milk, Human						
Jan	108,023	119,102	10.3	108,023	119,102	10.3
Feb	96,818	118,268	22.2	204,841	237,370	15.9
Mar	112,867	135,244	19.8	317,708	372,614	17.3
Apr	123,022	132,998	8.1	440,730	505,612	14.7
May	115,381	128,921	11.7	556,111	634,533	14.1
Jun	118,173	134,386	13.7	674,284	768,919	14.0
Jul	122,193	135,614	11.0	796,477	904,533	13.6
Aug	102,993	117,420	14.0	899,470	1,021,953	13.6
Sep	89,844			989,314		
Oct	100,242			1,089,556		
Nov	99,994			1,189,550		
Dec	108,930			1,298,480		
Skim Milk Powders ²						
Jan	9,210	45,614	395.3	9,210	45,614	395.3
Feb	9,628	33,804	251.1	18,838	79,418	321.6
Mar	8,578	34,428	301.4	27,416	113,846	315.3
Apr	15,568	36,137	132.1	42,984	149,983	248.9
May	12,987	45,511	250.4	55,971	195,494	249.3
Jun	16,419	33,873	106.3	72,390	229,367	216.8
Jul	19,212	27,120	41.2	91,602	256,487	180.0
Aug	17,922	26,649	48.7	109,524	283,136	158.5
Sep	14,884			124,408		
Oct	21,438			145,846		
Nov	19,697			165,543		
Dec	36,928			202,471		

See footnote(s) at end of table.

--continued

**Dairy Products: Production by Product and Month,
United States, 2007-2008¹ (continued)**

Product and Month	By Month			Cumulative		
	2007	2008	Change From 2007	2007	2008	Change From 2007
	<i>1,000 Pounds</i>	<i>1,000 Pounds</i>	<i>Percent</i>	<i>1,000 Pounds</i>	<i>1,000 Pounds</i>	<i>Percent</i>
Dry Whey, Total ³						
Jan	96,757	91,772	-5.2	96,757	91,772	-5.2
Feb	89,662	88,023	-1.8	186,419	179,795	-3.6
Mar	98,340	97,923	-0.4	284,759	277,718	-2.5
Apr	96,812	96,747	-0.1	381,571	374,465	-1.9
May	99,346	97,046	-2.3	480,917	471,511	-2.0
Jun	94,656	92,331	-2.5	575,573	563,842	-2.0
Jul	95,549	89,821	-6.0	671,122	653,663	-2.6
Aug	94,454	87,633	-7.2	765,576	741,296	-3.2
Sep	88,164			853,740		
Oct	88,895			942,635		
Nov	93,605			1,036,240		
Dec	97,621			1,133,861		
Lactose, Human and Animal						
Jan	65,635	62,182	-5.3	65,635	62,182	-5.3
Feb	59,625	60,254	1.1	125,260	122,436	-2.3
Mar	65,209	64,011	-1.8	190,469	186,447	-2.1
Apr	63,405	63,593	0.3	253,874	250,040	-1.5
May	67,924	65,029	-4.3	321,798	315,069	-2.1
Jun	62,953	63,011	0.1	384,751	378,080	-1.7
Jul	65,516	64,386	-1.7	450,267	442,466	-1.7
Aug	63,946	63,048	-1.4	514,213	505,514	-1.7
Sep	61,018			575,231		
Oct	61,598			636,829		
Nov	59,059			695,888		
Dec	59,637			755,525		
Whey Protein Concentrate, Total						
Jan	33,280	32,825	-1.4	33,280	32,825	-1.4
Feb	30,166	33,358	10.6	63,446	66,183	4.3
Mar	35,075	35,830	2.2	98,521	102,013	3.5
Apr	33,104	35,170	6.2	131,625	137,183	4.2
May	33,460	36,469	9.0	165,085	173,652	5.2
Jun	33,046	34,274	3.7	198,131	207,926	4.9
Jul	33,252	35,813	7.7	231,383	243,739	5.3
Aug	30,970	34,369	11.0	262,353	278,108	6.0
Sep	31,372			293,725		
Oct	32,283			326,008		
Nov	32,252			358,260		
Dec	35,327			393,587		

See footnote(s) at end of table.

--continued

**Dairy Products: Production by Product and Month,
United States, 2007-2008 ¹ (continued)**

Product and Month	By Month			Cumulative		
	2007	2008	Change From 2007	2007	2008	Change From 2007
	<i>1,000 Pounds</i>	<i>1,000 Pounds</i>	<i>Percent</i>	<i>1,000 Pounds</i>	<i>1,000 Pounds</i>	<i>Percent</i>
Cream Cottage Cheese						
Jan	30,512	27,548	-9.7	30,512	27,548	-9.7
Feb	28,836	25,983	-9.9	59,348	53,531	-9.8
Mar	32,170	28,361	-11.8	91,518	81,892	-10.5
Apr	30,640	26,730	-12.8	122,158	108,622	-11.1
May	32,038	29,521	-7.9	154,196	138,143	-10.4
Jun	30,909	28,194	-8.8	185,105	166,337	-10.1
Jul	30,750	29,220	-5.0	215,855	195,557	-9.4
Aug	32,519	28,996	-10.8	248,374	224,553	-9.6
Sep	29,245			277,619		
Oct	29,659			307,278		
Nov	27,268			334,546		
Dec	26,202			360,748		
Lowfat Cottage Cheese						
Jan	34,550	32,838	-5.0	34,550	32,838	-5.0
Feb	31,662	32,100	1.4	66,212	64,938	-1.9
Mar	37,009	35,330	-4.5	103,221	100,268	-2.9
Apr	33,513	34,533	3.0	136,734	134,801	-1.4
May	36,850	35,416	-3.9	173,584	170,217	-1.9
Jun	36,453	32,700	-10.3	210,037	202,917	-3.4
Jul	35,972	33,539	-6.8	246,009	236,456	-3.9
Aug	39,402	33,698	-14.5	285,411	270,154	-5.3
Sep	35,559			320,970		
Oct	36,566			357,536		
Nov	32,720			390,256		
Dec	30,588			420,844		
Sour Cream						
Jan	93,117	90,730	-2.6	93,117	90,730	-2.6
Feb	80,828	79,858	-1.2	173,945	170,588	-1.9
Mar	91,140	92,847	1.9	265,085	263,435	-0.6
Apr	87,891	83,225	-5.3	352,976	346,660	-1.8
May	94,972	93,902	-1.1	447,948	440,562	-1.6
Jun	88,709	89,009	0.3	536,657	529,571	-1.3
Jul	88,577	88,379	-0.2	625,234	617,950	-1.2
Aug	93,709	91,129	-2.8	718,943	709,079	-1.4
Sep	84,382			803,325		
Oct	100,133			903,458		
Nov	110,008			1,013,466		
Dec	98,460			1,111,926		

See footnote(s) at end of table.

--continued

**Dairy Products: Production by Product and Month,
United States, 2007-2008¹ (continued)**

Product and Month	By Month			Cumulative		
	2007	2008	Change From 2007	2007	2008	Change From 2007
	<i>1,000 Gallons</i>	<i>1,000 Gallons</i>	<i>Percent</i>	<i>1,000 Gallons</i>	<i>1,000 Gallons</i>	<i>Percent</i>
Ice Cream, Regular, Hard						
Jan	68,635	63,166	-8.0	68,635	63,166	-8.0
Feb	66,586	65,176	-2.1	135,221	128,342	-5.1
Mar	78,036	75,789	-2.9	213,257	204,131	-4.3
Apr	81,373	75,984	-6.6	294,630	280,115	-4.9
May	86,180	80,737	-6.3	380,810	360,852	-5.2
Jun	87,058	90,527	4.0	467,868	451,379	-3.5
Jul	84,428	83,458	-1.1	552,296	534,837	-3.2
Aug	79,740	78,621	-1.4	632,036	613,458	-2.9
Sep	70,121			702,157		
Oct	70,034			772,191		
Nov	56,039			828,230		
Dec	53,521			881,751		
Ice Cream, Lowfat, Total						
Jan	27,158	24,680	-9.1	27,158	24,680	-9.1
Feb	27,169	28,051	3.2	54,327	52,731	-2.9
Mar	33,493	33,533	0.1	87,820	86,264	-1.8
Apr	35,004	36,992	5.7	122,824	123,256	0.4
May	39,094	39,020	-0.2	161,918	162,276	0.2
Jun	40,572	43,560	7.4	202,490	205,836	1.7
Jul	38,223	40,181	5.1	240,713	246,017	2.2
Aug	36,887	36,730	-0.4	277,600	282,747	1.9
Sep	30,257			307,857		
Oct	29,258			337,115		
Nov	23,342			360,457		
Dec	22,163			382,620		
Sherbet, Hard						
Jan	3,941	4,027	2.2	3,941	4,027	2.2
Feb	4,380	4,232	-3.4	8,321	8,259	-0.7
Mar	5,630	5,633	0.1	13,951	13,892	-0.4
Apr	6,115	5,670	-7.3	20,066	19,562	-2.5
May	6,092	5,568	-8.6	26,158	25,130	-3.9
Jun	6,167	5,616	-8.9	32,325	30,746	-4.9
Jul	5,370	5,222	-2.8	37,695	35,968	-4.6
Aug	5,028	4,677	-7.0	42,723	40,645	-4.9
Sep	4,423			47,146		
Oct	4,145			51,291		
Nov	3,505			54,796		
Dec	3,443			58,239		

See footnote(s) at end of table.

--continued

**Dairy Products: Production by Product and Month,
United States, 2007-2008 ¹ (continued)**

Product and Month	By Month			Cumulative		
	2007	2008	Change From 2007	2007	2008	Change From 2007
	<i>1,000 Pounds</i>	<i>1,000 Pounds</i>	<i>Percent</i>	<i>1,000 Pounds</i>	<i>1,000 Pounds</i>	<i>Percent</i>
Yogurt, Plain & Flavored						
Jan	287,100	296,725	3.4	287,100	296,725	3.4
Feb	279,124	299,187	7.2	566,224	595,912	5.2
Mar	315,873	317,352	0.5	882,097	913,264	3.5
Apr	294,148	300,300	2.1	1,176,245	1,213,564	3.2
May	300,437	299,007	-0.5	1,476,682	1,512,571	2.4
Jun	284,869	293,243	2.9	1,761,551	1,805,814	2.5
Jul	278,479	282,221	1.3	2,040,030	2,088,035	2.4
Aug	299,954	293,357	-2.2	2,339,984	2,381,392	1.8
Sep	309,925			2,649,909		
Oct	301,028			2,950,937		
Nov	250,162			3,201,099		
Dec	276,628			3,477,727		
	<i>1,000 Gallons</i>	<i>1,000 Gallons</i>	<i>Percent</i>	<i>1,000 Gallons</i>	<i>1,000 Gallons</i>	<i>Percent</i>
Yogurt, Frozen						
Jan	4,291	3,577	-16.6	4,291	3,577	-16.6
Feb	4,300	4,133	-3.9	8,591	7,710	-10.3
Mar	5,706	5,856	2.6	14,297	13,566	-5.1
Apr	5,867	6,201	5.7	20,164	19,767	-2.0
May	5,838	6,722	15.1	26,002	26,489	1.9
Jun	6,391	6,717	5.1	32,393	33,206	2.5
Jul	5,554	5,462	-1.7	37,947	38,668	1.9
Aug	5,777	4,866	-15.8	43,724	43,534	-0.4
Sep	5,040			48,764		
Oct	4,402			53,166		
Nov	4,026			57,192		
Dec	3,520			60,712		

¹ July 2008 data revised.

² Includes protein standardized and blends.

³ Excludes all modified dry whey products.

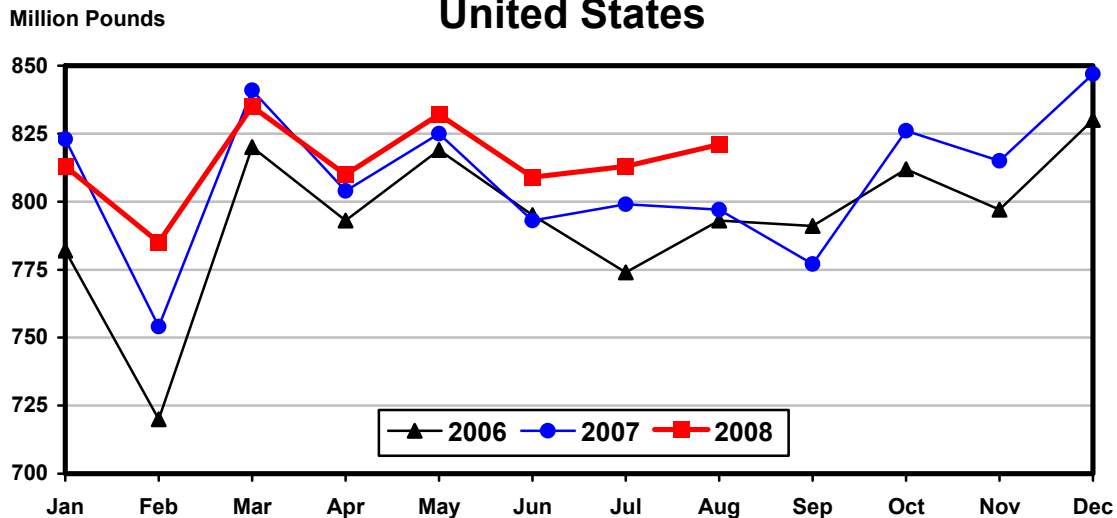
Total Cheese, Excluding Cottage Cheese: Production by State and United States, August 2007-2008

State	Aug 2007	Jul ¹ 2008	Aug 2008	Change From	
				Aug 2007	Jul 2008
	<i>1,000 Pounds</i>	<i>1,000 Pounds</i>	<i>1,000 Pounds</i>	<i>Percent</i>	<i>Percent</i>
CA	190,991	172,774	173,296	-9.3	0.3
ID	66,918	66,395	75,648	13.0	13.9
IL	6,470	6,378	6,217	-3.9	-2.5
IA	12,175	13,788	13,425	10.3	-2.6
MN	48,529	53,339	50,608	4.3	-5.1
NM	41,300	48,048	52,975	28.3	10.3
NY	63,375	54,529	58,624	-7.5	7.5
OH	16,058	14,473	14,688	-8.5	1.5
PA	32,387	34,352	32,625	0.7	-5.0
SD	18,222	18,588	19,740	8.3	6.2
UT	9,625	10,294	10,415	8.2	1.2
VT	12,434	11,554	11,876	-4.5	2.8
WI	203,218	206,327	206,380	1.6	
Oth Sts ²	75,331	102,337	94,754	25.8	-7.4
US	797,033	813,176	821,271	3.0	1.0
Atlantic	114,991	106,760	109,486	-4.8	2.6
Central	331,143	359,591	351,282	6.1	-2.3
West	350,899	346,825	360,503	2.7	3.9

¹ Revised.

² States not shown when fewer than 3 plants reported or individual plant operations could be disclosed. Percent change shown only when comparable States are included in the calculation.

Total Cheese Production United States



American Cheese: Production by State and United States, August 2007-2008

State	Aug 2007	Jul ¹ 2008	Aug 2008	Change From	
				Aug 2007	Jul 2008
	<i>1,000 Pounds</i>	<i>1,000 Pounds</i>	<i>1,000 Pounds</i>	<i>Percent</i>	<i>Percent</i>
CA	67,617	56,501	54,291	-19.7	-3.9
IA	10,240	11,471	10,942	6.9	-4.6
MN	44,562	45,787	43,262	-2.9	-5.5
OH	2,039	819	771	-62.2	-5.9
OR	9,222	14,532	14,582	58.1	0.3
WI	60,973	66,836	64,500	5.8	-3.5
Oth Sts ²	117,239	145,415	150,274	28.2	3.3
US	311,892	341,361	338,622	8.6	-0.8
Atlantic	12,566	12,318	11,521	-8.3	-6.5
Central	128,522	155,187	143,166	11.4	-7.7
West	170,804	173,856	183,935	7.7	5.8

¹ Revised.

² States not shown when fewer than 3 plants reported or individual plant operations could be disclosed. Percent change shown only when comparable States are included in the calculation.

Cheddar Cheese: Production by State and United States, August 2007-2008

State	Aug 2007	Jul ¹ 2008	Aug 2008	Change From	
				Aug 2007	Jul 2008
	<i>1,000 Pounds</i>	<i>1,000 Pounds</i>	<i>1,000 Pounds</i>	<i>Percent</i>	<i>Percent</i>
CA	39,416	33,713	28,470	-27.8	-15.6
IA	7,283	8,523	7,974	9.5	-6.4
MN	40,667	42,190	39,489	-2.9	-6.4
OH	1,807	588	564	-68.8	-4.1
WI	48,372	51,956	49,000	1.3	-5.7
Oth Sts ²	102,954	127,905	130,739	27.0	2.2
US	240,499	264,875	256,236	6.5	-3.3
Atlantic	12,279	11,981	11,240	-8.5	-6.2
Central	106,948	125,665	113,119	5.8	-10.0
West	121,272	127,229	131,877	8.7	3.7

¹ Revised.

² States not shown when fewer than 3 plants reported or individual plant operations could be disclosed. Percent change shown only when comparable States are included in the calculation.

Italian Cheese, Total: Production by State and United States, August 2007-2008

State	Aug 2007	Jul ¹ 2008	Aug 2008	Change From	
				Aug 2007	Jul 2008
	<i>1,000 Pounds</i>	<i>1,000 Pounds</i>	<i>1,000 Pounds</i>	<i>Percent</i>	<i>Percent</i>
CA	105,706	97,750	98,666	-6.7	0.9
ID	11,631	11,890	11,694	0.5	-1.6
NY	31,476	30,104	31,633	0.5	5.1
PA	20,377	20,988	19,595	-3.8	-6.6
SD	10,498				
WI	95,120	96,053	95,882	0.8	-0.2
Oth Sts ²	60,793	75,910	74,806		
US	335,601	332,695	332,276	-1.0	-0.1
Atlantic	60,277	58,951	59,374	-1.5	0.7
Central	125,446	131,342	129,579	3.3	-1.3
West	149,878	142,402	143,323	-4.4	0.6

¹ Revised.

² States not shown when fewer than 3 plants reported or individual plant operations could be disclosed. Percent change shown only when comparable States are included in the calculation.

Mozzarella Cheese: Production by State and United States, August 2007-2008

State	Aug 2007	Jul ¹ 2008	Aug 2008	Change From	
				Aug 2007	Jul 2008
	<i>1,000 Pounds</i>	<i>1,000 Pounds</i>	<i>1,000 Pounds</i>	<i>Percent</i>	<i>Percent</i>
CA	93,680	88,240	89,254	-4.7	1.1
NY	16,116	16,352	16,508	2.4	1.0
PA	17,844	17,874	16,760	-6.1	-6.2
WI	68,923	66,199	67,200	-2.5	1.5
Oth Sts ²	69,639	70,814	68,919	-1.0	-2.7
US	266,202	259,479	258,641	-2.8	-0.3
Atlantic	39,626	39,411	38,862	-1.9	-1.4
Central	91,496	89,935	88,597	-3.2	-1.5
West	135,080	130,133	131,182	-2.9	0.8

¹ Revised.

² States not shown when fewer than 3 plants reported or individual plant operations could be disclosed. Percent change shown only when comparable States are included in the calculation.

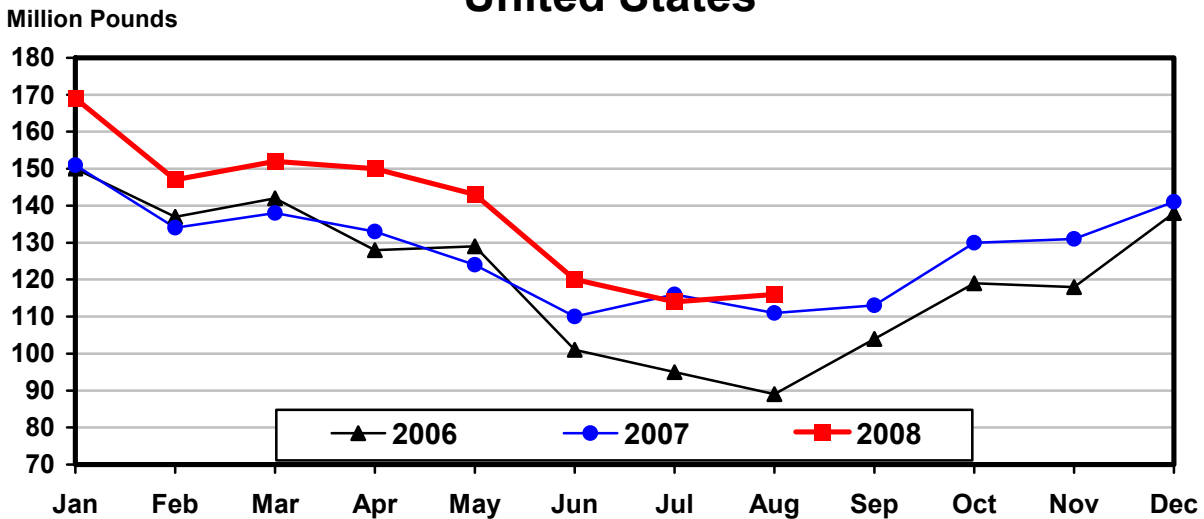
Butter: Production by State and United States, August 2007-2008

State	Aug 2007	Jul ¹ 2008	Aug 2008	Change From	
				Aug 2007	Jul 2008
	<i>1,000 Pounds</i>	<i>1,000 Pounds</i>	<i>1,000 Pounds</i>	<i>Percent</i>	<i>Percent</i>
CA	38,573	41,960	43,830	13.6	4.5
NY	671	1,445	788	17.4	-45.5
PA	2,780	5,679	4,694	68.8	-17.3
WI	26,829	23,821	22,700	-15.4	-4.7
Oth Sts ²	42,079	41,340	43,807	4.1	6.0
US	110,932	114,245	115,819	4.4	1.4
Atlantic	4,401	8,262	6,515	48.0	-21.1
Central	46,923	44,312	42,351	-9.7	-4.4
West	59,608	61,671	66,953	12.3	8.6

¹ Revised.

² States not shown when fewer than 3 plants reported or individual plant operations could be disclosed. Percent change shown only when comparable States are included in the calculation.

Total Butter Production United States



**Nonfat Dry Milk, Human: Production by State
and United States, August 2007-2008**

State	Aug 2007	Jul ¹ 2008	Aug 2008	Change From	
				Aug 2007	Jul 2008
	<i>1,000 Pounds</i>	<i>1,000 Pounds</i>	<i>1,000 Pounds</i>	<i>Percent</i>	<i>Percent</i>
CA	59,436	67,021	75,327	26.7	12.4
Oth Sts ²	43,557	68,593	42,093	-3.4	-38.6
US	102,993	135,614	117,420	14.0	-13.4
Atlantic	9,111	21,243	13,267	45.6	-37.5
Central	11,451	20,125	11,450		-43.1
West	82,431	94,246	92,703	12.5	-1.6

¹ Revised.

² States not shown when fewer than 3 plants reported or individual plant operations could be disclosed. Percent change shown only when comparable States are included in the calculation.

**Dry Whey, Human: Production by State
and United States, August 2007-2008**

State	Aug 2007	Jul ¹ 2008	Aug 2008	Change From	
				Aug 2007	Jul 2008
	<i>1,000 Pounds</i>	<i>1,000 Pounds</i>	<i>1,000 Pounds</i>	<i>Percent</i>	<i>Percent</i>
CA	6,436				
NY	10,862	11,051	10,823	-0.4	-2.1
WI	26,114	26,894	25,700	-1.6	-4.4
Oth Sts ²	45,861	47,933	46,584		
US	89,273	85,878	83,107	-6.9	-3.2
Atlantic	19,436	19,433	18,683	-3.9	-3.9
Central	41,416	40,831	38,657	-6.7	-5.3
West	28,421	25,614	25,767	-9.3	0.6

¹ Revised.

² States not shown when fewer than 3 plants reported or individual plant operations could be disclosed. Percent change shown only when comparable States are included in the calculation.

**Ice Cream, Regular, Hard: Production by State and United States,
August 2007-2008**

State	Aug 2007	Jul ¹ 2008	Aug 2008	Change From	
				Aug 2007	Jul 2008
	<i>1,000 Gallons</i>	<i>1,000 Gallons</i>	<i>1,000 Gallons</i>	<i>Percent</i>	<i>Percent</i>
CA	12,384	12,373	10,318	-16.7	-16.6
FL	1,463				
IN	5,911	6,098	5,229	-11.5	-14.3
MO	2,112	2,046	2,741	29.8	34.0
NY	2,678	2,702	2,793	4.3	3.4
NC	1,372	1,812	1,356	-1.2	-25.2
OH	2,480	2,273	2,316	-6.6	1.9
OR	1,412	1,881	1,517	7.4	-19.4
PA	3,278	3,634	3,228	-1.5	-11.2
TN	1,420	1,554	1,552	9.3	-0.1
TX	6,010	6,119	5,359	-10.8	-12.4
UT	2,345	2,724	2,682	14.4	-1.5
Oth Sts ²	36,875	40,242	39,530		
US	79,740	83,458	78,621	-1.4	-5.8
N Atl	12,791	14,289	14,223	11.2	-0.5
S Atl	6,373	6,774	6,405	0.5	-5.4
E N Cen	14,750	15,218	14,396	-2.4	-5.4
W N Cen	14,328	14,326	15,192	6.0	6.0
S Cen	12,006	12,175	10,911	-9.1	-10.4
West	19,492	20,676	17,494	-10.3	-15.4

¹ Revised.

² States not shown when fewer than 3 plants reported or individual plant operations could be disclosed. Percent change shown only when comparable States are included in the calculation.

**Canned Milk and Dry Milk Products: Manufacturers' Shipments,
and Stocks, August, 2007-2008**

Product	Aug 2007	Jul 2008 ¹	Aug 2008	Change From	
				Aug 2007	Jul 2008
	Manufacturers' Shipments ²				
	<i>1,000 Pounds</i>	<i>1,000 Pounds</i>	<i>1,000 Pounds</i>	<i>Percent</i>	<i>Percent</i>
Nonfat Dry Milk, Human	81,026	108,347	95,671	18.1	-11.7
	Manufacturers' Stocks End-of-Month ³				
	<i>1,000 Pounds</i>	<i>1,000 Pounds</i>	<i>1,000 Pounds</i>	<i>Percent</i>	<i>Percent</i>
Canned Evaporated and Condensed Whole Milk	76,804	87,026	92,934	21.0	6.8
Nonfat Dry Milk, Human	142,387	140,820	156,990	10.3	11.5
Dry Buttermilk, Total	10,171	9,139	10,780	6.0	18.0

¹ Revised.

² For dry products, shipments of bulk goods only.

³ Stocks held by manufacturers at all points and in transit.

Procedures and Reliability: Estimates included in this report are based on data provided each month by manufacturers of these products. In 32 States, the State Departments of Agriculture assist in collection of data, which eliminates duplicate reporting and reduces respondent burden. Data are collected by mail, personal and telephone interviews following the close of each month. There were 1,109 manufacturers that made one or more products in 2007. Each month, reports are generally received from all dairy plants in States with small numbers of plants. In States with large numbers of plants, survey procedures are designed to obtain monthly reports from all large plants and from a sample of small plants. Monthly estimates are based upon returns from about 70 percent of the plants which account for 70 to 90 percent of the total production of major dairy products.

Revision Policy: Monthly estimates are subject to revision the month following the preliminary estimates. Annual estimates are published in the "**Dairy Products**" report published each April which includes any revisions made to current and previous year. An attempt is made to get information from all plants for preparing these estimates

Information Contacts

Listed below are the commodity specialists in the Livestock Branch of the National Agricultural Statistics Service to contact for additional information.

Dan Kerestes, Chief, Livestock Branch (202) 720-3570

Livestock Section

Scott Hollis, Head, Livestock Section (202) 690-2424
 Jim Collom - Dairy Products (202) 690-3236
 Joe Gaynor - Dairy Products Prices (202) 690-2168
 Jason Hardegree - Cattle, Cattle on Feed (202) 720-3040
 Benita Hodge - Livestock Slaughter (515) 284-4340
 Everett Olbert - Sheep and Goats (202) 720-4751
 Mike Miller - Milk Production and Milk Cows (202) 720-3278
 Nick Streff - Hogs and Pigs (202) 720-3106

ACCESS TO REPORTS!!

For your convenience, there are several ways to obtain NASS reports, data products, and services:

INTERNET ACCESS

All NASS reports are available free of charge on the worldwide Internet. For access, connect to the Internet and go to the NASS Home Page at: www.nass.usda.gov.

E-MAIL SUBSCRIPTION

All NASS reports are available by subscription free of charge direct to your e-mail address. Starting with the NASS Home Page at www.nass.usda.gov, under the right navigation, *Receive reports by Email*, click on **National** or **State**. Follow the instructions on the screen.

PRINTED REPORTS OR DATA PRODUCTS

CALL OUR TOLL-FREE ORDER DESK: 800-999-6779 (U.S. and Canada)
Other areas, please call 703-605-6220 FAX: 703-605-6900
(Visa, MasterCard, check, or money order acceptable for payment.)

ASSISTANCE

For **assistance** with general agricultural statistics or further information about NASS or its products or services, contact the **Agricultural Statistics Hotline** at **800-727-9540**, 7:30 a.m. to 4:00 p.m. ET, or e-mail: nass@nass.usda.gov.

The U.S. Department of Agriculture (USDA) prohibits discrimination in all its programs and activities on the basis of race, color, national origin, age, disability, and where applicable, sex, marital status, familial status, parental status, religion, sexual orientation, genetic information, political beliefs, reprisal, or because all or a part of an individual's income is derived from any public assistance program. (Not all prohibited bases apply to all programs.) Persons with disabilities who require alternative means for communication of program information (Braille, large print, audiotape, etc.) should contact USDA's TARGET Center at (202) 720-2600 (voice and TDD).

To file a complaint of discrimination, write to USDA, Director, Office of Civil Rights, 1400 Independence Avenue, S.W., Washington, D.C. 20250-9410, or call (800) 795-3272 (voice) or (202) 720-6382 (TDD). USDA is an equal opportunity provider and employer.