
Released November 4, 2008, by the National Agricultural Statistics Service (NASS), Agricultural Statistics Board, U.S. Department of Agriculture. For information on *Dairy Products* call Jim Collom at (202) 690-3236, office hours 7:00 a.m. to 3:30 p.m. ET.

September 2008 Highlights

Total cheese output (excluding cottage cheese) was 795 million pounds, 2.3 percent above September 2007 but 3.1 percent below August 2008.

Italian type cheese production totaled 333 million pounds, 0.3 percent above September 2007 and 0.5 percent above August 2008.

American type cheese production totaled 317 million pounds, 5.7 percent above September 2007 but 6.4 percent below August 2008.

Butter production was 121 million pounds, 7.4 percent above September 2007 and 4.8 percent above August 2008.

Dry Milk Powders: (comparisons with September 2007)

Nonfat dry milk, human --- 86.3 million pounds, down 4.0 percent.

Skim milk powders --- 38.9 million pounds, up 161.1 percent.

Whey products: (comparisons with September 2007)

Dry whey, total --- 83.2 million pounds, down 5.7 percent.

Lactose, human and animal --- 58.8 million pounds, down 3.7 percent.

Whey protein concentrate, total --- 33.5 million pounds, up 6.7 percent.

Frozen products: (comparisons with September 2007)

Ice cream, Regular (hard) --- 76.0 million gallons, up 8.4 percent.

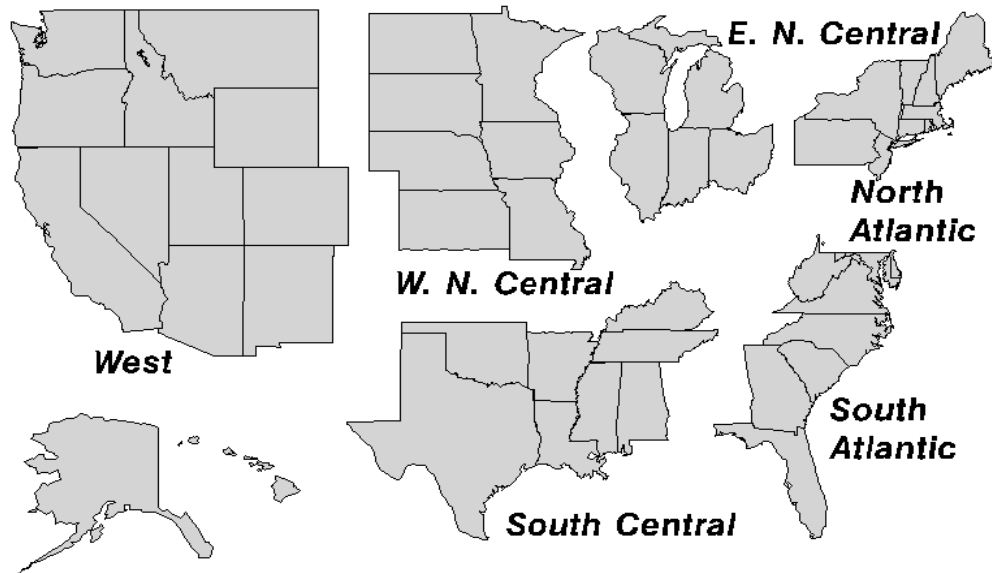
Ice cream, Lowfat (total) --- 30.6 million gallons, up 1.3 percent.

Sherbet (hard) --- 4.72 million gallons, up 6.8 percent.

Frozen Yogurt (total) --- 4.81 million gallons, down 4.6 percent.

U. S. Geographic Regions Dairy Products

If a region is unable to be published for confidentiality reasons, it will be combined with other regions when possible. For example, if North Atlantic can not be published, it will be combined with South Atlantic to publish Atlantic. The West North Central and East North Central will be combined, if necessary, to form North Central. In the event that neither could be published, they may be combined with South Central to publish Central. Some tables will have only limited regions shown, therefore the regions may not add to the United States total.



Contents

Page

Dairy Products: Production by Product, United States	1
Whey and Modified Whey Products: Production, Stocks, and Prices, United States.....	2
Dairy Products: Production by Product and Month, United States.....	3
Select Commodities by State and United States	10
Canned Milk and Dry Milk Products: Manufacturers' Shipments and Stocks.....	15
Procedures and Reliability	16
Information Contacts	16

**Dairy Products: Production by Product,
United States, September, 2007-2008**

Product	Sep 2007	Aug 2008 ¹	Sep 2008	Change From	
				Sep 2007	Aug 2008
	<i>1,000 Pounds</i>	<i>1,000 Pounds</i>	<i>1,000 Pounds</i>	<i>Percent</i>	<i>Percent</i>
Butter	112,869	115,729	121,245	7.4	4.8
Cheese					
American Types ²	299,616	338,507	316,779	5.7	-6.4
Cheddar	230,123	255,982	235,209	2.2	-8.1
Swiss	25,553	26,255	24,901	-2.6	-5.2
Brick and Muenster	9,086	11,986	11,531	26.9	-3.8
Cream and Neufchatel	71,516	68,884	67,835	-5.1	-1.5
Hispanic	15,799	16,765	16,456	4.2	-1.8
Mozzarella	266,649	257,990	258,115	-3.2	
Other Italian Types	65,704	73,804	75,347	14.7	2.1
Total Italian Types	332,353	331,794	333,462	0.3	0.5
All Other Types	23,240	26,519	24,383	4.9	-8.1
Total	777,163	820,710	795,347	2.3	-3.1
Cottage Cheese, Curd ³	39,274	38,134	37,561	-4.4	-1.5
Cottage Cheese, Cream ⁴	29,245	29,259	28,508	-2.5	-2.6
Cottage Cheese, Lowfat ⁵	35,559	33,553	32,892	-7.5	-2.0
Canned Evaporated and Condensed Whole Milk	41,568	51,193	55,953	34.6	9.3
Dry Whole Milk	2,223	3,675	4,476	101.3	21.8
Nonfat Dry Milk, Human Skim Milk Powders ⁶	89,844	115,180	86,266	-4.0	-25.1
Dry Skim Milk, Animal	381	999	743	95.0	-25.6
Dry Buttermilk	5,153	5,918	5,695	10.5	-3.8
Sour Cream	84,382	91,235	85,280	1.1	-6.5
Yogurt, Plain & Flavored	309,925	293,399	309,709	-0.1	5.6
	<i>1,000 Gallons</i>	<i>1,000 Gallons</i>	<i>1,000 Gallons</i>	<i>Percent</i>	<i>Percent</i>
Frozen Products					
Ice Cream, Regular, Hard	70,121	78,639	76,023	8.4	-3.3
Ice Cream, Lowfat, Hard	12,126	12,517	11,411	-5.9	-8.8
Ice Cream, Lowfat, Soft	18,131	24,556	19,230	6.1	-21.7
Ice Cream, Lowfat, Total	30,257	37,073	30,641	1.3	-17.3
Ice Cream, Nonfat, Hard	1,118	1,289	1,125	0.6	-12.7
Sherbet, Hard	4,423	4,632	4,724	6.8	2.0
Water and Juice Ices	4,509	6,062	4,205	-6.7	-30.6
Frozen Yogurt, Total	5,040	5,265	4,808	-4.6	-8.7
Regular & Lowfat, Hard	1,857	1,902	1,902	2.4	
Nonfat, Hard	594	595	651	9.6	9.4
Other Frozen Dairy Products	815	1,279	1,489	82.7	16.4
Mix for Frozen Products					
Ice Cream Mix	37,919	43,400	40,758	7.5	-6.1
Ice Cream, Lowfat, Mix	16,812	21,292	17,521	4.2	-17.7
Ice Cream, Nonfat, Mix	623	756	639	2.6	-15.5
Sherbet Mix	2,846	3,085	3,081	8.3	-0.1
Yogurt Mix	2,727	3,191	2,914	6.9	-8.7

¹ Revised.

² Includes Cheddar, Colby, Monterey, and Jack.

³ Mostly used for processing into cream or lowfat cottage cheese.

⁴ Fat content 4 percent or more.

⁵ Fat content less than 4 percent.

⁶ Includes protein standardized and blends.

**Whey and Modified Whey Products: Production, Stocks,
and Prices, United States, September, 2007-2008**

Product	Sep 2007	Aug 2008 ¹	Sep 2008	Change From	
				Sep 2007	Aug 2008
Production					
	<i>1,000 Pounds</i>	<i>1,000 Pounds</i>	<i>1,000 Pounds</i>	<i>Percent</i>	<i>Percent</i>
Condensed Whey, Solids Content ²					
Sweet-Type, Human	9,272	9,987	10,496	13.2	5.1
Dry Whey Products					
Dry Whey, Human	82,855	82,974	78,668	-5.1	-5.2
Dry Whey, Animal	5,309	4,398	4,487	-15.5	2.0
Dry Whey, Total	88,164	87,372	83,155	-5.7	-4.8
Reduced Lactose and Minerals					
Human Food	3,476	2,425	2,699	-22.4	11.3
Animal Feed	4,239	5,060	4,955	16.9	-2.1
Lactose, Human and Animal	61,018	63,088	58,776	-3.7	-6.8
Whey					
Protein Concentrate					
Human ³	27,997	32,404	31,216	11.5	-3.7
Animal ³	3,375	1,965	2,244	-33.5	14.2
Total ³	31,372	34,369	33,460	6.7	-2.6
25.0-49.9 Percent ⁴	20,919	24,088	23,307	11.4	-3.2
50.0-89.9 Percent ⁴	10,453	10,281	10,153	-2.9	-1.2
Protein Isolates ⁵	3,186	3,747	3,502	9.9	-6.5
Manufacturers' Stocks End-of-Month ⁶					
	<i>1,000 Pounds</i>	<i>1,000 Pounds</i>	<i>1,000 Pounds</i>	<i>Percent</i>	<i>Percent</i>
Dry Whey Products					
Dry Whey, Human	63,392	57,743	59,710	-5.8	3.4
Dry Whey, Animal	8,152	5,831	6,185	-24.1	6.1
Dry Whey, Total	71,544	63,574	65,895	-7.9	3.7
Reduced Lactose and Minerals					
Human and Animal ⁷	12,202	18,266	18,383	50.7	0.6
Lactose, Human and Animal	64,520	89,777	91,323	41.5	1.7
Whey					
Protein Concentrate					
Human ³	24,121	39,416	33,261	37.9	-15.6
Animal ³	2,680	825	896	-66.6	8.6
Total ³	26,801	40,241	34,157	27.4	-15.1
25.0-49.9 Percent ⁴	18,640	27,601	22,580	21.1	-18.2
50.0-89.9 Percent ⁴	8,161	12,640	11,577	41.9	-8.4
Manufacturers' Selling Price ⁸					
	<i>Cents per Pound</i>	<i>Cents per Pound</i>	<i>Cents per Pound</i>	<i>Cents Change</i>	<i>Cents Change</i>
Dry Whey, Animal	35.0	17.2	16.2	-18.8	-1.0

¹ Revised.

² Final marketable product only. Does not include quantity used or shipped to another plant for further processing into dry whey or modified whey products. Does not include sweet-type, animal whey.

³ Whey Protein Concentrate, 25.0 to 89.9 percent.

⁴ Whey Protein Concentrate, Human and Animal.

⁵ Whey Protein Isolate, 90.0 percent or greater.

⁶ Stocks held by manufacturers at all points and in transit.

⁷ Reduced lactose and minerals stocks combined to avoid disclosure of individual operations.

⁸ Prices for bulk goods, f.o.b. plant. Average monthly prices reported by firms.

**Dairy Products: Production by Product and Month,
United States, 2007-2008 ¹**

Product and Month	By Month			Cumulative		
	2007	2008	Change From 2007	2007	2008	Change From 2007
	<i>1,000 Pounds</i>	<i>1,000 Pounds</i>	<i>Percent</i>	<i>1,000 Pounds</i>	<i>1,000 Pounds</i>	<i>Percent</i>
Total Cheese						
Jan	822,889	812,722	-1.2	822,889	812,722	-1.2
Feb	754,132	784,649	4.0	1,577,021	1,597,371	1.3
Mar	840,522	834,716	-0.7	2,417,543	2,432,087	0.6
Apr	803,834	810,178	0.8	3,221,377	3,242,265	0.6
May	824,627	831,757	0.9	4,046,004	4,074,022	0.7
Jun	792,579	809,436	2.1	4,838,583	4,883,458	0.9
Jul	799,498	813,176	1.7	5,638,081	5,696,634	1.0
Aug	797,033	820,710	3.0	6,435,114	6,517,344	1.3
Sep	777,163	795,347	2.3	7,212,277	7,312,691	1.4
Oct	825,769			8,038,046		
Nov	815,175			8,853,221		
Dec	847,278			9,700,499		
American Cheese						
Jan	339,636	333,952	-1.7	339,636	333,952	-1.7
Feb	306,214	319,335	4.3	645,850	653,287	1.2
Mar	339,364	339,069	-0.1	985,214	992,356	0.7
Apr	325,940	337,392	3.5	1,311,154	1,329,748	1.4
May	332,537	351,343	5.7	1,643,691	1,681,091	2.3
Jun	315,522	335,185	6.2	1,959,213	2,016,276	2.9
Jul	324,709	341,361	5.1	2,283,922	2,357,637	3.2
Aug	311,892	338,507	8.5	2,595,814	2,696,144	3.9
Sep	299,616	316,779	5.7	2,895,430	3,012,923	4.1
Oct	321,308			3,216,738		
Nov	324,668			3,541,406		
Dec	336,421			3,877,827		
Cheddar Cheese						
Jan	272,310	262,443	-3.6	272,310	262,443	-3.6
Feb	249,177	251,251	0.8	521,487	513,694	-1.5
Mar	270,971	265,335	-2.1	792,458	779,029	-1.7
Apr	257,600	267,984	4.0	1,050,058	1,047,013	-0.3
May	265,704	273,739	3.0	1,315,762	1,320,752	0.4
Jun	251,330	259,300	3.2	1,567,092	1,580,052	0.8
Jul	255,335	264,875	3.7	1,822,427	1,844,927	1.2
Aug	240,499	255,982	6.4	2,062,926	2,100,909	1.8
Sep	230,123	235,209	2.2	2,293,049	2,336,118	1.9
Oct	245,236			2,538,285		
Nov	253,180			2,791,465		
Dec	265,823			3,057,288		

See footnote(s) at end of table.

--continued

**Dairy Products: Production by Product and Month,
United States, 2007-2008¹ (continued)**

Product and Month	By Month			Cumulative		
	2007	2008	Change From 2007	2007	2008	Change From 2007
	<i>1,000 Pounds</i>	<i>1,000 Pounds</i>	<i>Percent</i>	<i>1,000 Pounds</i>	<i>1,000 Pounds</i>	<i>Percent</i>
Italian Cheese						
Jan	355,797	351,817	-1.1	355,797	351,817	-1.1
Feb	323,511	334,973	3.5	679,308	686,790	1.1
Mar	362,151	358,315	-1.1	1,041,459	1,045,105	0.4
Apr	345,284	343,605	-0.5	1,386,743	1,388,710	0.1
May	351,560	344,570	-2.0	1,738,303	1,733,280	-0.3
Jun	339,066	332,924	-1.8	2,077,369	2,066,204	-0.5
Jul	336,380	332,695	-1.1	2,413,749	2,398,899	-0.6
Aug	335,601	331,794	-1.1	2,749,350	2,730,693	-0.7
Sep	332,353	333,462	0.3	3,081,703	3,064,155	-0.6
Oct	348,027			3,429,730		
Nov	345,858			3,775,588		
Dec	358,642			4,134,230		
Mozzarella						
Jan	281,811	281,234	-0.2	281,811	281,234	-0.2
Feb	259,702	265,322	2.2	541,513	546,556	0.9
Mar	287,215	285,685	-0.5	828,728	832,241	0.4
Apr	276,606	273,771	-1.0	1,105,334	1,106,012	0.1
May	280,745	270,913	-3.5	1,386,079	1,376,925	-0.7
Jun	274,913	259,982	-5.4	1,660,992	1,636,907	-1.5
Jul	271,574	259,479	-4.5	1,932,566	1,896,386	-1.9
Aug	266,202	257,990	-3.1	2,198,768	2,154,376	-2.0
Sep	266,649	258,115	-3.2	2,465,417	2,412,491	-2.1
Oct	276,103			2,741,520		
Nov	273,498			3,015,018		
Dec	288,287			3,303,305		
Other Italian						
Jan	73,986	70,583	-4.6	73,986	70,583	-4.6
Feb	63,809	69,651	9.2	137,795	140,234	1.8
Mar	74,936	72,630	-3.1	212,731	212,864	0.1
Apr	68,678	69,834	1.7	281,409	282,698	0.5
May	70,815	73,657	4.0	352,224	356,355	1.2
Jun	64,153	72,942	13.7	416,377	429,297	3.1
Jul	64,806	73,216	13.0	481,183	502,513	4.4
Aug	69,399	73,804	6.3	550,582	576,317	4.7
Sep	65,704	75,347	14.7	616,286	651,664	5.7
Oct	71,924			688,210		
Nov	72,360			760,570		
Dec	70,355			830,925		

See footnote(s) at end of table.

--continued

**Dairy Products: Production by Product and Month,
United States, 2007-2008 ¹ (continued)**

Product and Month	By Month			Cumulative		
	2007	2008	Change From 2007	2007	2008	Change From 2007
	<i>1,000 Pounds</i>	<i>1,000 Pounds</i>	<i>Percent</i>	<i>1,000 Pounds</i>	<i>1,000 Pounds</i>	<i>Percent</i>
Butter						
Jan	150,595	168,799	12.1	150,595	168,799	12.1
Feb	133,966	146,759	9.5	284,561	315,558	10.9
Mar	138,380	151,933	9.8	422,941	467,491	10.5
Apr	133,029	150,118	12.8	555,970	617,609	11.1
May	123,991	142,599	15.0	679,961	760,208	11.8
Jun	109,980	119,800	8.9	789,941	880,008	11.4
Jul	116,493	114,245	-1.9	906,434	994,253	9.7
Aug	110,932	115,729	4.3	1,017,366	1,109,982	9.1
Sep	112,869	121,245	7.4	1,130,235	1,231,227	8.9
Oct	130,364			1,260,599		
Nov	130,798			1,391,397		
Dec	141,493			1,532,890		
Nonfat Dry Milk, Human						
Jan	108,023	119,102	10.3	108,023	119,102	10.3
Feb	96,818	118,268	22.2	204,841	237,370	15.9
Mar	112,867	135,244	19.8	317,708	372,614	17.3
Apr	123,022	132,998	8.1	440,730	505,612	14.7
May	115,381	128,921	11.7	556,111	634,533	14.1
Jun	118,173	134,386	13.7	674,284	768,919	14.0
Jul	122,193	135,614	11.0	796,477	904,533	13.6
Aug	102,993	115,180	11.8	899,470	1,019,713	13.4
Sep	89,844	86,266	-4.0	989,314	1,105,979	11.8
Oct	100,242			1,089,556		
Nov	99,994			1,189,550		
Dec	108,930			1,298,480		
Skim Milk Powders ²						
Jan	9,210	45,614	395.3	9,210	45,614	395.3
Feb	9,628	33,804	251.1	18,838	79,418	321.6
Mar	8,578	34,428	301.4	27,416	113,846	315.3
Apr	15,568	36,137	132.1	42,984	149,983	248.9
May	12,987	45,511	250.4	55,971	195,494	249.3
Jun	16,419	33,873	106.3	72,390	229,367	216.8
Jul	19,212	27,120	41.2	91,602	256,487	180.0
Aug	17,922	26,649	48.7	109,524	283,136	158.5
Sep	14,884	38,868	161.1	124,408	322,004	158.8
Oct	21,438			145,846		
Nov	19,697			165,543		
Dec	36,928			202,471		

See footnote(s) at end of table.

--continued

**Dairy Products: Production by Product and Month,
United States, 2007-2008¹ (continued)**

Product and Month	By Month			Cumulative		
	2007	2008	Change From 2007	2007	2008	Change From 2007
	<i>1,000 Pounds</i>	<i>1,000 Pounds</i>	<i>Percent</i>	<i>1,000 Pounds</i>	<i>1,000 Pounds</i>	<i>Percent</i>
Dry Whey, Total ³						
Jan	96,757	91,772	-5.2	96,757	91,772	-5.2
Feb	89,662	88,023	-1.8	186,419	179,795	-3.6
Mar	98,340	97,923	-0.4	284,759	277,718	-2.5
Apr	96,812	96,747	-0.1	381,571	374,465	-1.9
May	99,346	97,046	-2.3	480,917	471,511	-2.0
Jun	94,656	92,331	-2.5	575,573	563,842	-2.0
Jul	95,549	89,821	-6.0	671,122	653,663	-2.6
Aug	94,454	87,372	-7.5	765,576	741,035	-3.2
Sep	88,164	83,155	-5.7	853,740	824,190	-3.5
Oct	88,895			942,635		
Nov	93,605			1,036,240		
Dec	97,621			1,133,861		
Lactose, Human and Animal						
Jan	65,635	62,182	-5.3	65,635	62,182	-5.3
Feb	59,625	60,254	1.1	125,260	122,436	-2.3
Mar	65,209	64,011	-1.8	190,469	186,447	-2.1
Apr	63,405	63,593	0.3	253,874	250,040	-1.5
May	67,924	65,029	-4.3	321,798	315,069	-2.1
Jun	62,953	63,011	0.1	384,751	378,080	-1.7
Jul	65,516	64,386	-1.7	450,267	442,466	-1.7
Aug	63,946	63,088	-1.3	514,213	505,554	-1.7
Sep	61,018	58,776	-3.7	575,231	564,330	-1.9
Oct	61,598			636,829		
Nov	59,059			695,888		
Dec	59,637			755,525		
Whey Protein Concentrate, Total						
Jan	33,280	32,825	-1.4	33,280	32,825	-1.4
Feb	30,166	33,358	10.6	63,446	66,183	4.3
Mar	35,075	35,830	2.2	98,521	102,013	3.5
Apr	33,104	35,170	6.2	131,625	137,183	4.2
May	33,460	36,469	9.0	165,085	173,652	5.2
Jun	33,046	34,274	3.7	198,131	207,926	4.9
Jul	33,252	35,813	7.7	231,383	243,739	5.3
Aug	30,970	34,369	11.0	262,353	278,108	6.0
Sep	31,372	33,460	6.7	293,725	311,568	6.1
Oct	32,283			326,008		
Nov	32,252			358,260		
Dec	35,327			393,587		

See footnote(s) at end of table.

--continued

**Dairy Products: Production by Product and Month,
United States, 2007-2008 ¹ (continued)**

Product and Month	By Month			Cumulative		
	2007	2008	Change From 2007	2007	2008	Change From 2007
	<i>1,000 Pounds</i>	<i>1,000 Pounds</i>	<i>Percent</i>	<i>1,000 Pounds</i>	<i>1,000 Pounds</i>	<i>Percent</i>
Cream Cottage Cheese						
Jan	30,512	27,548	-9.7	30,512	27,548	-9.7
Feb	28,836	25,983	-9.9	59,348	53,531	-9.8
Mar	32,170	28,361	-11.8	91,518	81,892	-10.5
Apr	30,640	26,730	-12.8	122,158	108,622	-11.1
May	32,038	29,521	-7.9	154,196	138,143	-10.4
Jun	30,909	28,194	-8.8	185,105	166,337	-10.1
Jul	30,750	29,220	-5.0	215,855	195,557	-9.4
Aug	32,519	29,259	-10.0	248,374	224,816	-9.5
Sep	29,245	28,508	-2.5	277,619	253,324	-8.8
Oct	29,659			307,278		
Nov	27,268			334,546		
Dec	26,202			360,748		
Lowfat Cottage Cheese						
Jan	34,550	32,838	-5.0	34,550	32,838	-5.0
Feb	31,662	32,100	1.4	66,212	64,938	-1.9
Mar	37,009	35,330	-4.5	103,221	100,268	-2.9
Apr	33,513	34,533	3.0	136,734	134,801	-1.4
May	36,850	35,416	-3.9	173,584	170,217	-1.9
Jun	36,453	32,700	-10.3	210,037	202,917	-3.4
Jul	35,972	33,539	-6.8	246,009	236,456	-3.9
Aug	39,402	33,553	-14.8	285,411	270,009	-5.4
Sep	35,559	32,892	-7.5	320,970	302,901	-5.6
Oct	36,566			357,536		
Nov	32,720			390,256		
Dec	30,588			420,844		
Sour Cream						
Jan	93,117	90,730	-2.6	93,117	90,730	-2.6
Feb	80,828	79,858	-1.2	173,945	170,588	-1.9
Mar	91,140	92,847	1.9	265,085	263,435	-0.6
Apr	87,891	83,225	-5.3	352,976	346,660	-1.8
May	94,972	93,902	-1.1	447,948	440,562	-1.6
Jun	88,709	89,009	0.3	536,657	529,571	-1.3
Jul	88,577	88,379	-0.2	625,234	617,950	-1.2
Aug	93,709	91,235	-2.6	718,943	709,185	-1.4
Sep	84,382	85,280	1.1	803,325	794,465	-1.1
Oct	100,133			903,458		
Nov	110,008			1,013,466		
Dec	98,460			1,111,926		

See footnote(s) at end of table.

--continued

**Dairy Products: Production by Product and Month,
United States, 2007-2008¹ (continued)**

Product and Month	By Month			Cumulative		
	2007	2008	Change From 2007	2007	2008	Change From 2007
	<i>1,000 Gallons</i>	<i>1,000 Gallons</i>	<i>Percent</i>	<i>1,000 Gallons</i>	<i>1,000 Gallons</i>	<i>Percent</i>
Ice Cream, Regular, Hard						
Jan	68,635	63,166	-8.0	68,635	63,166	-8.0
Feb	66,586	65,176	-2.1	135,221	128,342	-5.1
Mar	78,036	75,789	-2.9	213,257	204,131	-4.3
Apr	81,373	75,984	-6.6	294,630	280,115	-4.9
May	86,180	80,737	-6.3	380,810	360,852	-5.2
Jun	87,058	90,527	4.0	467,868	451,379	-3.5
Jul	84,428	83,458	-1.1	552,296	534,837	-3.2
Aug	79,740	78,639	-1.4	632,036	613,476	-2.9
Sep	70,121	76,023	8.4	702,157	689,499	-1.8
Oct	70,034			772,191		
Nov	56,039			828,230		
Dec	53,521			881,751		
Ice Cream, Lowfat, Total						
Jan	27,158	24,680	-9.1	27,158	24,680	-9.1
Feb	27,169	28,051	3.2	54,327	52,731	-2.9
Mar	33,493	33,533	0.1	87,820	86,264	-1.8
Apr	35,004	36,992	5.7	122,824	123,256	0.4
May	39,094	39,020	-0.2	161,918	162,276	0.2
Jun	40,572	43,560	7.4	202,490	205,836	1.7
Jul	38,223	40,181	5.1	240,713	246,017	2.2
Aug	36,887	37,073	0.5	277,600	283,090	2.0
Sep	30,257	30,641	1.3	307,857	313,731	1.9
Oct	29,258			337,115		
Nov	23,342			360,457		
Dec	22,163			382,620		
Sherbet, Hard						
Jan	3,941	4,027	2.2	3,941	4,027	2.2
Feb	4,380	4,232	-3.4	8,321	8,259	-0.7
Mar	5,630	5,633	0.1	13,951	13,892	-0.4
Apr	6,115	5,670	-7.3	20,066	19,562	-2.5
May	6,092	5,568	-8.6	26,158	25,130	-3.9
Jun	6,167	5,616	-8.9	32,325	30,746	-4.9
Jul	5,370	5,222	-2.8	37,695	35,968	-4.6
Aug	5,028	4,632	-7.9	42,723	40,600	-5.0
Sep	4,423	4,724	6.8	47,146	45,324	-3.9
Oct	4,145			51,291		
Nov	3,505			54,796		
Dec	3,443			58,239		

See footnote(s) at end of table.

--continued

**Dairy Products: Production by Product and Month,
United States, 2007-2008 ¹ (continued)**

Product and Month	By Month			Cumulative		
	2007	2008	Change From 2007	2007	2008	Change From 2007
	<i>1,000 Pounds</i>	<i>1,000 Pounds</i>	<i>Percent</i>	<i>1,000 Pounds</i>	<i>1,000 Pounds</i>	<i>Percent</i>
Yogurt, Plain & Flavored						
Jan	287,100	296,725	3.4	287,100	296,725	3.4
Feb	279,124	299,187	7.2	566,224	595,912	5.2
Mar	315,873	317,352	0.5	882,097	913,264	3.5
Apr	294,148	300,300	2.1	1,176,245	1,213,564	3.2
May	300,437	299,007	-0.5	1,476,682	1,512,571	2.4
Jun	284,869	293,243	2.9	1,761,551	1,805,814	2.5
Jul	278,479	282,221	1.3	2,040,030	2,088,035	2.4
Aug	299,954	293,399	-2.2	2,339,984	2,381,434	1.8
Sep	309,925	309,709	-0.1	2,649,909	2,691,143	1.6
Oct	301,028			2,950,937		
Nov	250,162			3,201,099		
Dec	276,628			3,477,727		
	<i>1,000 Gallons</i>	<i>1,000 Gallons</i>	<i>Percent</i>	<i>1,000 Gallons</i>	<i>1,000 Gallons</i>	<i>Percent</i>
Yogurt, Frozen						
Jan	4,291	3,577	-16.6	4,291	3,577	-16.6
Feb	4,300	4,133	-3.9	8,591	7,710	-10.3
Mar	5,706	5,856	2.6	14,297	13,566	-5.1
Apr	5,867	6,201	5.7	20,164	19,767	-2.0
May	5,838	6,722	15.1	26,002	26,489	1.9
Jun	6,391	6,717	5.1	32,393	33,206	2.5
Jul	5,554	5,462	-1.7	37,947	38,668	1.9
Aug	5,777	5,265	-8.9	43,724	43,933	0.5
Sep	5,040	4,808	-4.6	48,764	48,741	
Oct	4,402			53,166		
Nov	4,026			57,192		
Dec	3,520			60,712		

¹ August 2008 data revised.

² Includes protein standardized and blends.

³ Excludes all modified dry whey products.

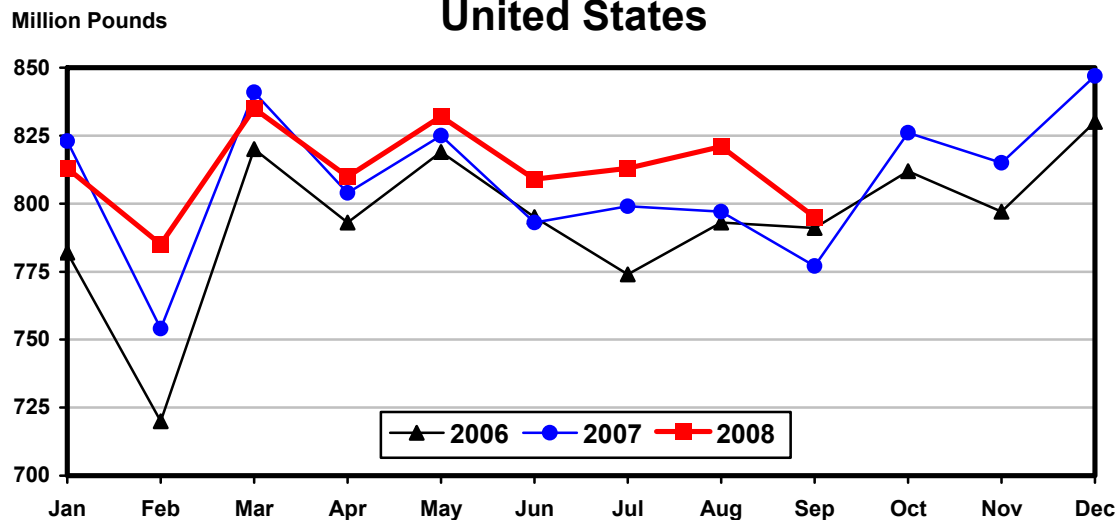
Total Cheese, Excluding Cottage Cheese: Production by State and United States, September 2007-2008

State	Sep 2007	Aug ¹ 2008	Sep 2008	Change From	
				Sep 2007	Aug 2008
	<i>1,000 Pounds</i>	<i>1,000 Pounds</i>	<i>1,000 Pounds</i>	<i>Percent</i>	<i>Percent</i>
CA	177,662	173,370	167,943	-5.5	-3.1
ID	65,536	75,648	65,563		-13.3
IL	6,468	6,217	6,764	4.6	8.8
IA	12,208	13,425	13,223	8.3	-1.5
MN	46,725	50,608	49,660	6.3	-1.9
NM	46,051	52,615	46,607	1.2	-11.4
NY	60,290	58,614	61,453	1.9	4.8
OH	15,180	14,688	14,057	-7.4	-4.3
PA	32,095	32,625	32,327	0.7	-0.9
SD	18,427	19,740	19,399	5.3	-1.7
UT	9,431	10,415	9,663	2.5	-7.2
VT	11,238	11,901	9,771	-13.1	-17.9
WI	200,664	206,032	205,634	2.5	-0.2
Oth Sts ²	75,188	94,812	93,283	24.1	-1.6
US	777,163	820,710	795,347	2.3	-3.1
Atlantic	109,605	109,518	110,865	1.1	1.2
Central	326,857	350,942	348,064	6.5	-0.8
West	340,701	360,250	336,418	-1.3	-6.6

¹ Revised.

² States not shown when fewer than 3 plants reported or individual plant operations could be disclosed. Percent change shown only when comparable States are included in the calculation.

Total Cheese Production United States



American Cheese: Production by State and United States, September 2007-2008

State	Sep 2007	Aug ¹ 2008	Sep 2008	Change From	
				Sep 2007	Aug 2008
	<i>1,000 Pounds</i>	<i>1,000 Pounds</i>	<i>1,000 Pounds</i>	<i>Percent</i>	<i>Percent</i>
CA	59,181	54,291	53,365	-9.8	-1.7
IA	9,929	10,942	11,128	12.1	1.7
MN	43,502	43,262	42,392	-2.6	-2.0
OH	1,881	771	878	-53.3	13.9
OR	8,830	14,582	13,861	57.0	-4.9
WI	59,141	64,352	60,300	2.0	-6.3
Oth Sts ²	117,152	150,307	134,855	15.1	-10.3
US	299,616	338,507	316,779	5.7	-6.4
Atlantic	11,498	11,547	10,318	-10.3	-10.6
Central	125,268	143,025	140,154	11.9	-2.0
West	162,850	183,935	166,307	2.1	-9.6

¹ Revised.

² States not shown when fewer than 3 plants reported or individual plant operations could be disclosed. Percent change shown only when comparable States are included in the calculation.

Cheddar Cheese: Production by State and United States, September 2007-2008

State	Sep 2007	Aug ¹ 2008	Sep 2008	Change From	
				Sep 2007	Aug 2008
	<i>1,000 Pounds</i>	<i>1,000 Pounds</i>	<i>1,000 Pounds</i>	<i>Percent</i>	<i>Percent</i>
CA	33,299	28,470	26,271	-21.1	-7.7
IA	7,141	7,974	8,032	12.5	0.7
MN	39,156	39,489	39,233	0.2	-0.6
OH	1,676	564	660	-60.6	17.0
WI	47,688	48,719	45,500	-4.6	-6.6
Oth Sts ²	101,163	130,766	115,513	14.2	-11.7
US	230,123	255,982	235,209	2.2	-8.1
Atlantic	10,808	11,266	9,948	-8.0	-11.7
Central	104,598	112,839	110,283	5.4	-2.3
West	114,717	131,877	114,978	0.2	-12.8

¹ Revised.

² States not shown when fewer than 3 plants reported or individual plant operations could be disclosed. Percent change shown only when comparable States are included in the calculation.

Italian Cheese, Total: Production by State and United States, September 2007-2008

State	Sep 2007	Aug ¹ 2008	Sep 2008	Change From	
				Sep 2007	Aug 2008
	<i>1,000 Pounds</i>	<i>1,000 Pounds</i>	<i>1,000 Pounds</i>	<i>Percent</i>	<i>Percent</i>
CA	102,143	98,666	97,879	-4.2	-0.8
ID	11,779	11,694	11,734	-0.4	0.3
NY	30,935	31,623	31,697	2.5	0.2
PA	19,451	19,595	19,455		-0.7
SD	10,725				
WI	95,950	95,892	99,327	3.5	3.6
Oth Sts ²	61,370	74,324	73,370		
US	332,353	331,794	333,462	0.3	0.5
Atlantic	57,912	59,381	59,514	2.8	0.2
Central	125,605	129,589	132,817	5.7	2.5
West	148,836	142,824	141,131	-5.2	-1.2

¹ Revised.

² States not shown when fewer than 3 plants reported or individual plant operations could be disclosed. Percent change shown only when comparable States are included in the calculation.

Mozzarella Cheese: Production by State and United States, September 2007-2008

State	Sep 2007	Aug ¹ 2008	Sep 2008	Change From	
				Sep 2007	Aug 2008
	<i>1,000 Pounds</i>	<i>1,000 Pounds</i>	<i>1,000 Pounds</i>	<i>Percent</i>	<i>Percent</i>
CA	90,753	89,254	88,097	-2.9	-1.3
NY	16,181	16,508	16,022	-1.0	-2.9
PA	17,272	16,760	16,754	-3.0	
WI	70,469	67,178	70,100	-0.5	4.3
Oth Sts ²	71,974	68,290	67,142	-6.7	-1.7
US	266,649	257,990	258,115	-3.2	
Atlantic	38,455	38,870	37,912	-1.4	-2.5
Central	93,329	88,575	91,779	-1.7	3.6
West	134,865	130,545	128,424	-4.8	-1.6

¹ Revised.

² States not shown when fewer than 3 plants reported or individual plant operations could be disclosed. Percent change shown only when comparable States are included in the calculation.

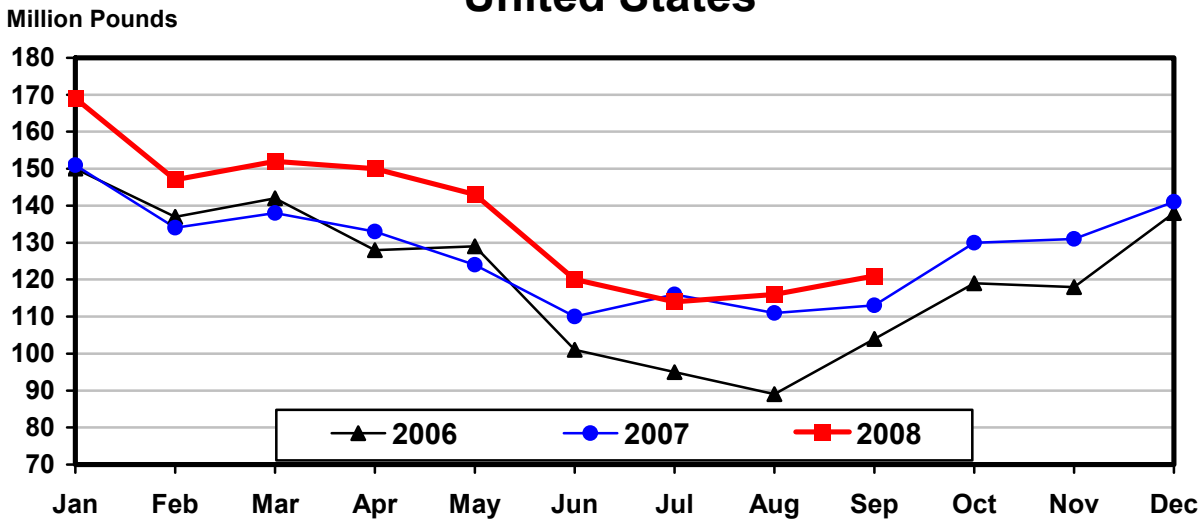
Butter: Production by State and United States, September 2007-2008

State	Sep 2007	Aug ¹ 2008	Sep 2008	Change From	
				Sep 2007	Aug 2008
	<i>1,000 Pounds</i>	<i>1,000 Pounds</i>	<i>1,000 Pounds</i>	<i>Percent</i>	<i>Percent</i>
CA	39,257	43,830	41,914	6.8	-4.4
NY	792	788	756	-4.5	-4.1
PA	3,882	4,694	4,682	20.6	-0.3
WI	26,859	22,610	28,200	5.0	24.7
Oth Sts ²	42,079	43,807	45,693	8.6	4.3
US	112,869	115,729	121,245	7.4	4.8
Atlantic	6,396	6,515	7,548	18.0	15.9
Central	47,032	42,261	49,281	4.8	16.6
West	59,441	66,953	64,416	8.4	-3.8

¹ Revised.

² States not shown when fewer than 3 plants reported or individual plant operations could be disclosed. Percent change shown only when comparable States are included in the calculation.

Total Butter Production United States



**Nonfat Dry Milk, Human: Production by State
and United States, September 2007-2008**

State	Sep 2007	Aug ¹ 2008	Sep 2008	Change From	
				Sep 2007	Aug 2008
	<i>1,000 Pounds</i>	<i>1,000 Pounds</i>	<i>1,000 Pounds</i>	<i>Percent</i>	<i>Percent</i>
CA	54,457	75,327	55,079	1.1	-26.9
Oth Sts ²	35,387	39,853	31,187	-11.9	-21.7
US	89,844	115,180	86,266	-4.0	-25.1
Atlantic	7,408	13,267	8,435	13.9	-36.4
Central	10,689	11,143	7,039	-34.1	-36.8
West	71,747	90,770	70,792	-1.3	-22.0

¹ Revised.

² States not shown when fewer than 3 plants reported or individual plant operations could be disclosed. Percent change shown only when comparable States are included in the calculation.

**Dry Whey, Human: Production by State
and United States, September 2007-2008**

State	Sep 2007	Aug ¹ 2008	Sep 2008	Change From	
				Sep 2007	Aug 2008
	<i>1,000 Pounds</i>	<i>1,000 Pounds</i>	<i>1,000 Pounds</i>	<i>Percent</i>	<i>Percent</i>
CA	6,456				
NY	10,272	10,778	10,536	2.6	-2.2
WI	23,836	25,612	22,300	-6.4	-12.9
Oth Sts ²	42,291	46,584	45,832		
US	82,855	82,974	78,668	-5.1	-5.2
Atlantic	18,527	18,638	18,383	-0.8	-1.4
Central	38,110	38,569	34,880	-8.5	-9.6
West	26,218	25,767	25,405	-3.1	-1.4

¹ Revised.

² States not shown when fewer than 3 plants reported or individual plant operations could be disclosed. Percent change shown only when comparable States are included in the calculation.

**Ice Cream, Regular, Hard: Production by State and United States,
September 2007-2008**

State	Sep 2007	Aug ¹ 2008	Sep 2008	Change From	
				Sep 2007	Aug 2008
	<i>1,000 Gallons</i>	<i>1,000 Gallons</i>	<i>1,000 Gallons</i>	<i>Percent</i>	<i>Percent</i>
CA	9,285	10,325	11,082	19.4	7.3
FL	1,180				
IN	6,129	5,229	5,879	-4.1	12.4
MO	2,166	2,741	1,959	-9.6	-28.5
NY	1,979	2,793	2,585	30.6	-7.4
NC	1,036	1,356	1,624	56.8	19.8
OH	2,046	2,316	2,105	2.9	-9.1
OR	1,089	1,517	1,175	7.9	-22.5
PA	2,562	3,228	3,081	20.3	-4.6
TN	1,282	1,552	1,533	19.6	-1.2
TX	5,422	5,359	4,427	-18.4	-17.4
UT	1,978	2,682	2,453	24.0	-8.5
Oth Sts ²	33,967	39,541	38,120		
US	70,121	78,639	76,023	8.4	-3.3
N Atl	11,358	14,234	12,625	11.2	-11.3
S Atl	5,556	6,405	6,741	21.3	5.2
E N Cen	14,259	14,396	14,423	1.2	0.2
W N Cen	13,726	15,192	15,638	13.9	2.9
S Cen	10,204	10,911	9,291	-8.9	-14.8
West	15,018	17,501	17,305	15.2	-1.1

¹ Revised.

² States not shown when fewer than 3 plants reported or individual plant operations could be disclosed. Percent change shown only when comparable States are included in the calculation.

**Canned Milk and Dry Milk Products: Manufacturers' Shipments,
and Stocks, September, 2007-2008**

Product	Sep 2007	Aug 2008 ¹	Sep 2008	Change From	
				Sep 2007	Aug 2008
	<i>1,000 Pounds</i>	<i>1,000 Pounds</i>	<i>1,000 Pounds</i>	<i>Percent</i>	<i>Percent</i>
	Manufacturers' Shipments ²				
Nonfat Dry Milk, Human	98,860	94,700	97,259	-1.6	2.7
	Manufacturers' Stocks End-of-Month ³				
	<i>1,000 Pounds</i>	<i>1,000 Pounds</i>	<i>1,000 Pounds</i>	<i>Percent</i>	<i>Percent</i>
Canned Evaporated and Condensed Whole Milk	70,451	92,934	86,544	22.8	-6.9
Nonfat Dry Milk, Human	118,797	153,782	142,967	20.3	-7.0
Dry Buttermilk, Total	11,095	10,780	10,847	-2.2	0.6

¹ Revised.

² For dry products, shipments of bulk goods only.

³ Stocks held by manufacturers at all points and in transit.

Procedures and Reliability: Estimates included in this report are based on data provided each month by manufacturers of these products. In 32 States, the State Departments of Agriculture assist in collection of data, which eliminates duplicate reporting and reduces respondent burden. Data are collected by mail, personal and telephone interviews following the close of each month. There were 1,109 manufacturers that made one or more products in 2007. Each month, reports are generally received from all dairy plants in States with small numbers of plants. In States with large numbers of plants, survey procedures are designed to obtain monthly reports from all large plants and from a sample of small plants. Monthly estimates are based upon returns from about 70 percent of the plants which account for 70 to 90 percent of the total production of major dairy products.

Revision Policy: Monthly estimates are subject to revision the month following the preliminary estimates. Annual estimates are published in the "**Dairy Products**" report published each April which includes any revisions made to current and previous year. An attempt is made to get information from all plants for preparing these estimates

Information Contacts

Listed below are the commodity specialists in the Livestock Branch of the National Agricultural Statistics Service to contact for additional information.

Dan Kerestes, Chief, Livestock Branch (202) 720-3570

Livestock Section

Scott Hollis, Head, Livestock Section (202) 690-2424
 Jim Collom - Dairy Products (202) 690-3236
 Joe Gaynor - Dairy Products Prices (202) 690-2168
 Jason Hardegree - Cattle, Cattle on Feed (202) 720-3040
 Benita Hodge - Livestock Slaughter (515) 284-4340
 Everett Olbert - Sheep and Goats (202) 720-4751
 Mike Miller - Milk Production and Milk Cows (202) 720-3278
 Nick Streff - Hogs and Pigs (202) 720-3106

ACCESS TO REPORTS!!

For your convenience, there are several ways to obtain NASS reports, data products, and services:

INTERNET ACCESS

All NASS reports are available free of charge on the worldwide Internet. For access, connect to the Internet and go to the NASS Home Page at: www.nass.usda.gov.

E-MAIL SUBSCRIPTION

All NASS reports are available by subscription free of charge direct to your e-mail address. Starting with the NASS Home Page at www.nass.usda.gov, under the right navigation, *Receive reports by Email*, click on **National** or **State**. Follow the instructions on the screen.

PRINTED REPORTS OR DATA PRODUCTS

CALL OUR TOLL-FREE ORDER DESK: 800-999-6779 (U.S. and Canada)
Other areas, please call 703-605-6220 FAX: 703-605-6900
(Visa, MasterCard, check, or money order acceptable for payment.)

ASSISTANCE

For **assistance** with general agricultural statistics or further information about NASS or its products or services, contact the **Agricultural Statistics Hotline** at **800-727-9540**, 7:30 a.m. to 4:00 p.m. ET, or e-mail: nass@nass.usda.gov.

The U.S. Department of Agriculture (USDA) prohibits discrimination in all its programs and activities on the basis of race, color, national origin, age, disability, and where applicable, sex, marital status, familial status, parental status, religion, sexual orientation, genetic information, political beliefs, reprisal, or because all or a part of an individual's income is derived from any public assistance program. (Not all prohibited bases apply to all programs.) Persons with disabilities who require alternative means for communication of program information (Braille, large print, audiotape, etc.) should contact USDA's TARGET Center at (202) 720-2600 (voice and TDD).

To file a complaint of discrimination, write to USDA, Director, Office of Civil Rights, 1400 Independence Avenue, S.W., Washington, D.C. 20250-9410, or call (800) 795-3272 (voice) or (202) 720-6382 (TDD). USDA is an equal opportunity provider and employer.