
Released January 5, 2009, by the National Agricultural Statistics Service (NASS), Agricultural Statistics Board, U.S. Department of Agriculture. For information on *Dairy Products* call Jim Collom at (202) 690-3236, office hours 7:00 a.m. to 3:30 p.m. ET.

November 2008 Highlights

Total cheese output (excluding cottage cheese) was 826 million pounds, 1.3 percent above November 2007 but 2.1 percent below October 2008.

Italian type cheese production totaled 337 million pounds, 2.7 percent below November 2007 and 2.2 percent below October 2008.

American type cheese production totaled 341 million pounds, 4.9 percent above November 2007 but 0.8 percent below October 2008.

Butter production was 134 million pounds, 2.2 percent above November 2007 and 2.8 percent above October 2008.

Dry Milk Powders: (comparisons with November 2007)

Nonfat dry milk, human --- 135 million pounds, up 34.8 percent.

Skim milk powders --- 16.5 million pounds, down 16.3 percent.

Whey products: (comparisons with November 2007)

Dry whey, total --- 84.6 million pounds, down 9.7 percent.

Lactose, human and animal --- 57.5 million pounds, down 2.6 percent.

Whey protein concentrate, total --- 34.4 million pounds, up 6.5 percent.

Frozen products: (comparisons with November 2007)

Ice cream, Regular (hard) --- 57.9 million gallons, up 3.3 percent.

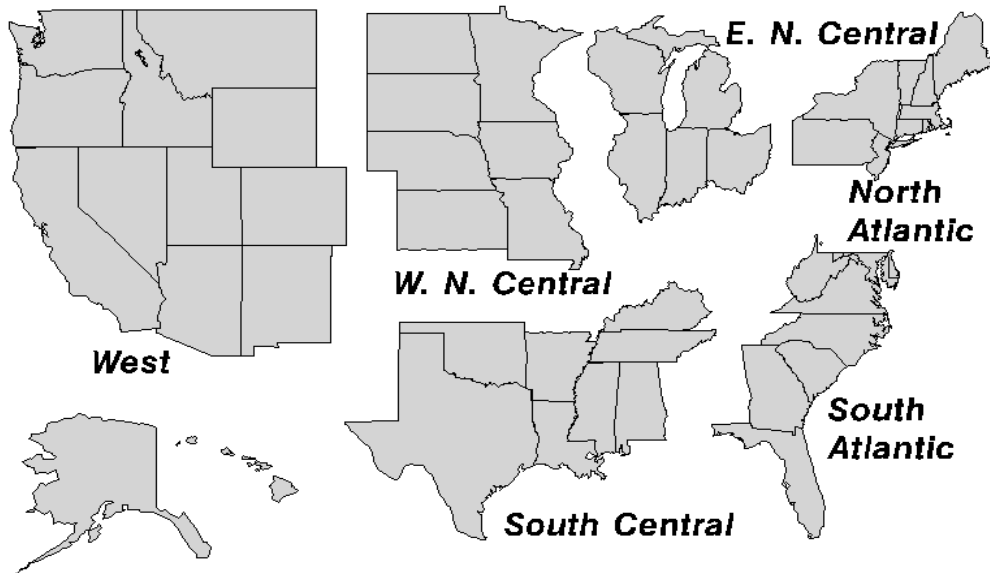
Ice cream, Lowfat (total) --- 21.6 million gallons, down 7.3 percent.

Sherbet (hard) --- 3.60 million gallons, up 2.7 percent.

Frozen Yogurt (total) --- 3.66 million gallons, down 9.0 percent.

U. S. Geographic Regions Dairy Products

If a region is unable to be published for confidentiality reasons, it will be combined with other regions when possible. For example, if North Atlantic can not be published, it will be combined with South Atlantic to publish Atlantic. The West North Central and East North Central will be combined, if necessary, to form North Central. In the event that neither could be published, they may be combined with South Central to publish Central. Some tables will have only limited regions shown, therefore the regions may not add to the United States total.



Contents

Page

Dairy Products: Production by Product, United States	1
Whey and Modified Whey Products: Production, Stocks, and Prices, United States.....	2
Dairy Products: Production by Product and Month, United States.....	3
Select Commodities by State and United States	10
Canned Milk and Dry Milk Products: Manufacturers' Shipments and Stocks.....	15
Procedures and Reliability	16
Information Contacts	16

**Dairy Products: Production by Product,
United States, November, 2007-2008**

Product	Nov 2007	Oct 2008 ¹	Nov 2008	Change From	
				Nov 2007	Oct 2008
	<i>1,000 Pounds</i>	<i>1,000 Pounds</i>	<i>1,000 Pounds</i>	<i>Percent</i>	<i>Percent</i>
Butter	130,798	130,047	133,631	2.2	2.8
Cheese					
American Types ²	324,668	343,130	340,512	4.9	-0.8
Cheddar	253,180	255,257	258,907	2.3	1.4
Swiss	25,731	26,592	25,821	0.3	-2.9
Brick and Muenster	9,244	10,542	10,902	17.9	3.4
Cream and Neufchatel	68,417	78,755	73,595	7.6	-6.6
Hispanic	15,646	17,182	15,152	-3.2	-11.8
Mozzarella	273,498	263,906	260,209	-4.9	-1.4
Other Italian Types	72,360	80,223	76,391	5.6	-4.8
Total Italian Types	345,858	344,129	336,600	-2.7	-2.2
All Other Types	25,611	23,136	23,403	-8.6	1.2
Total	815,175	843,466	825,985	1.3	-2.1
Cottage Cheese, Curd ³	35,129	36,099	31,813	-9.4	-11.9
Cottage Cheese, Cream ⁴	27,268	27,478	24,267	-11.0	-11.7
Cottage Cheese, Lowfat ⁵	32,720	32,338	27,169	-17.0	-16.0
Canned Evaporated and Condensed Whole Milk	39,975	56,527	46,431	16.2	-17.9
Dry Whole Milk	2,258	4,941	3,675	62.8	-25.6
Nonfat Dry Milk, Human	99,994	120,961	134,801	34.8	11.4
Skim Milk Powders ⁶	19,697	17,556	16,477	-16.3	-6.1
Dry Skim Milk, Animal	360	507	504	40.0	-0.6
Dry Buttermilk	7,208	6,614	6,786	-5.9	2.6
Sour Cream	110,008	96,520	99,230	-9.8	2.8
Yogurt, Plain & Flavored	250,162	292,356	243,135	-2.8	-16.8
	<i>1,000 Gallons</i>	<i>1,000 Gallons</i>	<i>1,000 Gallons</i>	<i>Percent</i>	<i>Percent</i>
Frozen Products					
Ice Cream, Regular, Hard	56,039	68,738	57,892	3.3	-15.8
Ice Cream, Lowfat, Hard	8,992	9,650	7,780	-13.5	-19.4
Ice Cream, Lowfat, Soft	14,350	17,563	13,851	-3.5	-21.1
Ice Cream, Lowfat, Total	23,342	27,213	21,631	-7.3	-20.5
Ice Cream, Nonfat, Hard	848	1,094	1,283	51.3	17.3
Sherbet, Hard	3,505	4,177	3,600	2.7	-13.8
Water and Juice Ices	3,155	3,740	3,298	4.5	-11.8
Frozen Yogurt, Total	4,026	4,485	3,663	-9.0	-18.3
Regular & Lowfat, Hard	1,631	1,610	1,375	-15.7	-14.6
Nonfat, Hard	529	605	402	-24.0	-33.6
Other Frozen Dairy Products	844	905	924	9.5	2.1
Mix for Frozen Products					
Ice Cream Mix	30,087	37,395	32,646	8.5	-12.7
Ice Cream, Lowfat, Mix	13,489	15,596	12,389	-8.2	-20.6
Ice Cream, Nonfat, Mix	472	658	800	69.5	21.6
Sherbet Mix	2,297	2,726	2,409	4.9	-11.6
Yogurt Mix	2,164	2,718	2,220	2.6	-18.3

¹ Revised.

² Includes Cheddar, Colby, Monterey, and Jack.

³ Mostly used for processing into cream or lowfat cottage cheese.

⁴ Fat content 4 percent or more.

⁵ Fat content less than 4 percent.

⁶ Includes protein standardized and blends.

**Whey and Modified Whey Products: Production, Stocks,
and Prices, United States, November, 2007-2008**

Product	Nov 2007	Oct 2008 ¹	Nov 2008	Change From	
				Nov 2007	Oct 2008
Production					
	<i>1,000 Pounds</i>	<i>1,000 Pounds</i>	<i>1,000 Pounds</i>	<i>Percent</i>	<i>Percent</i>
Condensed Whey, Solids Content ²					
Sweet-Type, Human	9,792	10,270	9,014	-7.9	-12.2
Dry Whey Products					
Dry Whey, Human	88,282	81,198	80,794	-8.5	-0.5
Dry Whey, Animal	5,323	4,050	3,769	-29.2	-6.9
Dry Whey, Total	93,605	85,248	84,563	-9.7	-0.8
Reduced Lactose and Minerals					
Human Food	3,484	2,962	2,112	-39.4	-28.7
Animal Feed	4,636	4,884	4,839	4.4	-0.9
Lactose, Human and Animal	59,059	60,063	57,509	-2.6	-4.3
Whey					
Protein Concentrate					
Human ³	30,566	33,719	31,836	4.2	-5.6
Animal ³	1,686	2,905	2,514	49.1	-13.5
Total ³	32,252	36,624	34,350	6.5	-6.2
25.0-49.9 Percent ⁴	20,506	24,663	22,971	12.0	-6.9
50.0-89.9 Percent ⁴	11,746	11,961	11,379	-3.1	-4.9
Protein Isolates ⁵	3,339	3,741	3,599	7.8	-3.8
Manufacturers' Stocks End-of-Month ⁶					
	<i>1,000 Pounds</i>	<i>1,000 Pounds</i>	<i>1,000 Pounds</i>	<i>Percent</i>	<i>Percent</i>
Dry Whey Products					
Dry Whey, Human	53,528	56,146	56,469	5.5	0.6
Dry Whey, Animal	5,743	3,912	3,380	-41.1	-13.6
Dry Whey, Total	59,271	60,058	59,849	1.0	-0.3
Reduced Lactose and Minerals					
Human and Animal ⁷	13,006	18,697	17,712	36.2	-5.3
Lactose, Human and Animal	67,050	92,107	86,664	29.3	-5.9
Whey					
Protein Concentrate					
Human ³	26,118	30,480	30,980	18.6	1.6
Animal ³	714	1,126	834	16.8	-25.9
Total ³	26,832	31,606	31,814	18.6	0.7
25.0-49.9 Percent ⁴	17,476	18,485	19,740	13.0	6.8
50.0-89.9 Percent ⁴	9,356	13,121	12,074	29.1	-8.0
Manufacturers' Selling Price ⁸					
	<i>Cents per Pound</i>	<i>Cents per Pound</i>	<i>Cents per Pound</i>	<i>Cents Change</i>	<i>Cents Change</i>
Dry Whey, Animal	36.8	15.8	15.5	-21.3	-0.3

¹ Revised.

² Final marketable product only. Does not include quantity used or shipped to another plant for further processing into dry whey or modified whey products. Does not include sweet-type, animal whey.

³ Whey Protein Concentrate, 25.0 to 89.9 percent.

⁴ Whey Protein Concentrate, Human and Animal.

⁵ Whey Protein Isolate, 90.0 percent or greater.

⁶ Stocks held by manufacturers at all points and in transit.

⁷ Reduced lactose and minerals stocks combined to avoid disclosure of individual operations.

⁸ Prices for bulk goods, f.o.b. plant. Average monthly prices reported by firms.

**Dairy Products: Production by Product and Month,
United States, 2007-2008 ¹**

Product and Month	By Month			Cumulative		
	2007	2008	Change From 2007	2007	2008	Change From 2007
	<i>1,000 Pounds</i>	<i>1,000 Pounds</i>	<i>Percent</i>	<i>1,000 Pounds</i>	<i>1,000 Pounds</i>	<i>Percent</i>
Total Cheese						
Jan	822,889	812,722	-1.2	822,889	812,722	-1.2
Feb	754,132	784,649	4.0	1,577,021	1,597,371	1.3
Mar	840,522	834,716	-0.7	2,417,543	2,432,087	0.6
Apr	803,834	810,178	0.8	3,221,377	3,242,265	0.6
May	824,627	831,757	0.9	4,046,004	4,074,022	0.7
Jun	792,579	809,436	2.1	4,838,583	4,883,458	0.9
Jul	799,498	813,176	1.7	5,638,081	5,696,634	1.0
Aug	797,033	820,710	3.0	6,435,114	6,517,344	1.3
Sep	777,163	796,485	2.5	7,212,277	7,313,829	1.4
Oct	825,769	843,466	2.1	8,038,046	8,157,295	1.5
Nov	815,175	825,985	1.3	8,853,221	8,983,280	1.5
Dec	847,278			9,700,499		
American Cheese						
Jan	339,636	333,952	-1.7	339,636	333,952	-1.7
Feb	306,214	319,335	4.3	645,850	653,287	1.2
Mar	339,364	339,069	-0.1	985,214	992,356	0.7
Apr	325,940	337,392	3.5	1,311,154	1,329,748	1.4
May	332,537	351,343	5.7	1,643,691	1,681,091	2.3
Jun	315,522	335,185	6.2	1,959,213	2,016,276	2.9
Jul	324,709	341,361	5.1	2,283,922	2,357,637	3.2
Aug	311,892	338,507	8.5	2,595,814	2,696,144	3.9
Sep	299,616	317,195	5.9	2,895,430	3,013,339	4.1
Oct	321,308	343,130	6.8	3,216,738	3,356,469	4.3
Nov	324,668	340,512	4.9	3,541,406	3,696,981	4.4
Dec	336,421			3,877,827		
Cheddar Cheese						
Jan	272,310	262,443	-3.6	272,310	262,443	-3.6
Feb	249,177	251,251	0.8	521,487	513,694	-1.5
Mar	270,971	265,335	-2.1	792,458	779,029	-1.7
Apr	257,600	267,984	4.0	1,050,058	1,047,013	-0.3
May	265,704	273,739	3.0	1,315,762	1,320,752	0.4
Jun	251,330	259,300	3.2	1,567,092	1,580,052	0.8
Jul	255,335	264,875	3.7	1,822,427	1,844,927	1.2
Aug	240,499	255,982	6.4	2,062,926	2,100,909	1.8
Sep	230,123	235,352	2.3	2,293,049	2,336,261	1.9
Oct	245,236	255,257	4.1	2,538,285	2,591,518	2.1
Nov	253,180	258,907	2.3	2,791,465	2,850,425	2.1
Dec	265,823			3,057,288		

See footnote(s) at end of table.

--continued

**Dairy Products: Production by Product and Month,
United States, 2007-2008¹ (continued)**

Product and Month	By Month			Cumulative		
	2007	2008	Change From 2007	2007	2008	Change From 2007
	<i>1,000 Pounds</i>	<i>1,000 Pounds</i>	<i>Percent</i>	<i>1,000 Pounds</i>	<i>1,000 Pounds</i>	<i>Percent</i>
Italian Cheese						
Jan	355,797	351,817	-1.1	355,797	351,817	-1.1
Feb	323,511	334,973	3.5	679,308	686,790	1.1
Mar	362,151	358,315	-1.1	1,041,459	1,045,105	0.4
Apr	345,284	343,605	-0.5	1,386,743	1,388,710	0.1
May	351,560	344,570	-2.0	1,738,303	1,733,280	-0.3
Jun	339,066	332,924	-1.8	2,077,369	2,066,204	-0.5
Jul	336,380	332,695	-1.1	2,413,749	2,398,899	-0.6
Aug	335,601	331,794	-1.1	2,749,350	2,730,693	-0.7
Sep	332,353	333,660	0.4	3,081,703	3,064,353	-0.6
Oct	348,027	344,129	-1.1	3,429,730	3,408,482	-0.6
Nov	345,858	336,600	-2.7	3,775,588	3,745,082	-0.8
Dec	358,642			4,134,230		
Mozzarella						
Jan	281,811	281,234	-0.2	281,811	281,234	-0.2
Feb	259,702	265,322	2.2	541,513	546,556	0.9
Mar	287,215	285,685	-0.5	828,728	832,241	0.4
Apr	276,606	273,771	-1.0	1,105,334	1,106,012	0.1
May	280,745	270,913	-3.5	1,386,079	1,376,925	-0.7
Jun	274,913	259,982	-5.4	1,660,992	1,636,907	-1.5
Jul	271,574	259,479	-4.5	1,932,566	1,896,386	-1.9
Aug	266,202	257,990	-3.1	2,198,768	2,154,376	-2.0
Sep	266,649	258,290	-3.1	2,465,417	2,412,666	-2.1
Oct	276,103	263,906	-4.4	2,741,520	2,676,572	-2.4
Nov	273,498	260,209	-4.9	3,015,018	2,936,781	-2.6
Dec	288,287			3,303,305		
Other Italian						
Jan	73,986	70,583	-4.6	73,986	70,583	-4.6
Feb	63,809	69,651	9.2	137,795	140,234	1.8
Mar	74,936	72,630	-3.1	212,731	212,864	0.1
Apr	68,678	69,834	1.7	281,409	282,698	0.5
May	70,815	73,657	4.0	352,224	356,355	1.2
Jun	64,153	72,942	13.7	416,377	429,297	3.1
Jul	64,806	73,216	13.0	481,183	502,513	4.4
Aug	69,399	73,804	6.3	550,582	576,317	4.7
Sep	65,704	75,370	14.7	616,286	651,687	5.7
Oct	71,924	80,223	11.5	688,210	731,910	6.3
Nov	72,360	76,391	5.6	760,570	808,301	6.3
Dec	70,355			830,925		

See footnote(s) at end of table.

--continued

**Dairy Products: Production by Product and Month,
United States, 2007-2008 ¹ (continued)**

Product and Month	By Month			Cumulative		
	2007	2008	Change From 2007	2007	2008	Change From 2007
	<i>1,000 Pounds</i>	<i>1,000 Pounds</i>	<i>Percent</i>	<i>1,000 Pounds</i>	<i>1,000 Pounds</i>	<i>Percent</i>
Butter						
Jan	150,595	168,799	12.1	150,595	168,799	12.1
Feb	133,966	146,759	9.5	284,561	315,558	10.9
Mar	138,380	151,933	9.8	422,941	467,491	10.5
Apr	133,029	150,118	12.8	555,970	617,609	11.1
May	123,991	142,599	15.0	679,961	760,208	11.8
Jun	109,980	119,800	8.9	789,941	880,008	11.4
Jul	116,493	114,245	-1.9	906,434	994,253	9.7
Aug	110,932	115,729	4.3	1,017,366	1,109,982	9.1
Sep	112,869	121,008	7.2	1,130,235	1,230,990	8.9
Oct	130,364	130,047	-0.2	1,260,599	1,361,037	8.0
Nov	130,798	133,631	2.2	1,391,397	1,494,668	7.4
Dec	141,493			1,532,890		
Nonfat Dry Milk, Human						
Jan	108,023	119,102	10.3	108,023	119,102	10.3
Feb	96,818	118,268	22.2	204,841	237,370	15.9
Mar	112,867	135,244	19.8	317,708	372,614	17.3
Apr	123,022	132,998	8.1	440,730	505,612	14.7
May	115,381	128,921	11.7	556,111	634,533	14.1
Jun	118,173	134,386	13.7	674,284	768,919	14.0
Jul	122,193	135,614	11.0	796,477	904,533	13.6
Aug	102,993	115,180	11.8	899,470	1,019,713	13.4
Sep	89,844	85,516	-4.8	989,314	1,105,229	11.7
Oct	100,242	120,961	20.7	1,089,556	1,226,190	12.5
Nov	99,994	134,801	34.8	1,189,550	1,360,991	14.4
Dec	108,930			1,298,480		
Skim Milk Powders ²						
Jan	9,210	45,614	395.3	9,210	45,614	395.3
Feb	9,628	33,804	251.1	18,838	79,418	321.6
Mar	8,578	34,428	301.4	27,416	113,846	315.3
Apr	15,568	36,137	132.1	42,984	149,983	248.9
May	12,987	45,511	250.4	55,971	195,494	249.3
Jun	16,419	33,873	106.3	72,390	229,367	216.8
Jul	19,212	27,120	41.2	91,602	256,487	180.0
Aug	17,922	26,649	48.7	109,524	283,136	158.5
Sep	14,884	38,868	161.1	124,408	322,004	158.8
Oct	21,438	17,556	-18.1	145,846	339,560	132.8
Nov	19,697	16,477	-16.3	165,543	356,037	115.1
Dec	36,928			202,471		

See footnote(s) at end of table.

--continued

**Dairy Products: Production by Product and Month,
United States, 2007-2008¹ (continued)**

Product and Month	By Month			Cumulative		
	2007	2008	Change From 2007	2007	2008	Change From 2007
	<i>1,000 Pounds</i>	<i>1,000 Pounds</i>	<i>Percent</i>	<i>1,000 Pounds</i>	<i>1,000 Pounds</i>	<i>Percent</i>
Dry Whey, Total ³						
Jan	96,757	91,772	-5.2	96,757	91,772	-5.2
Feb	89,662	88,023	-1.8	186,419	179,795	-3.6
Mar	98,340	97,923	-0.4	284,759	277,718	-2.5
Apr	96,812	96,747	-0.1	381,571	374,465	-1.9
May	99,346	97,046	-2.3	480,917	471,511	-2.0
Jun	94,656	92,331	-2.5	575,573	563,842	-2.0
Jul	95,549	89,821	-6.0	671,122	653,663	-2.6
Aug	94,454	87,372	-7.5	765,576	741,035	-3.2
Sep	88,164	82,614	-6.3	853,740	823,649	-3.5
Oct	88,895	85,248	-4.1	942,635	908,897	-3.6
Nov	93,605	84,563	-9.7	1,036,240	993,460	-4.1
Dec	97,621			1,133,861		
Lactose, Human and Animal						
Jan	65,635	62,182	-5.3	65,635	62,182	-5.3
Feb	59,625	60,254	1.1	125,260	122,436	-2.3
Mar	65,209	64,011	-1.8	190,469	186,447	-2.1
Apr	63,405	63,593	0.3	253,874	250,040	-1.5
May	67,924	65,029	-4.3	321,798	315,069	-2.1
Jun	62,953	63,011	0.1	384,751	378,080	-1.7
Jul	65,516	64,386	-1.7	450,267	442,466	-1.7
Aug	63,946	63,088	-1.3	514,213	505,554	-1.7
Sep	61,018	58,834	-3.6	575,231	564,388	-1.9
Oct	61,598	60,063	-2.5	636,829	624,451	-1.9
Nov	59,059	57,509	-2.6	695,888	681,960	-2.0
Dec	59,637			755,525		
Whey Protein Concentrate, Total						
Jan	33,280	32,825	-1.4	33,280	32,825	-1.4
Feb	30,166	33,358	10.6	63,446	66,183	4.3
Mar	35,075	35,830	2.2	98,521	102,013	3.5
Apr	33,104	35,170	6.2	131,625	137,183	4.2
May	33,460	36,469	9.0	165,085	173,652	5.2
Jun	33,046	34,274	3.7	198,131	207,926	4.9
Jul	33,252	35,813	7.7	231,383	243,739	5.3
Aug	30,970	34,369	11.0	262,353	278,108	6.0
Sep	31,372	33,314	6.2	293,725	311,422	6.0
Oct	32,283	36,624	13.4	326,008	348,046	6.8
Nov	32,252	34,350	6.5	358,260	382,396	6.7
Dec	35,327			393,587		

See footnote(s) at end of table.

--continued

**Dairy Products: Production by Product and Month,
United States, 2007-2008 ¹ (continued)**

Product and Month	By Month			Cumulative		
	2007	2008	Change From 2007	2007	2008	Change From 2007
	<i>1,000 Pounds</i>	<i>1,000 Pounds</i>	<i>Percent</i>	<i>1,000 Pounds</i>	<i>1,000 Pounds</i>	<i>Percent</i>
Cream Cottage Cheese						
Jan	30,512	27,548	-9.7	30,512	27,548	-9.7
Feb	28,836	25,983	-9.9	59,348	53,531	-9.8
Mar	32,170	28,361	-11.8	91,518	81,892	-10.5
Apr	30,640	26,730	-12.8	122,158	108,622	-11.1
May	32,038	29,521	-7.9	154,196	138,143	-10.4
Jun	30,909	28,194	-8.8	185,105	166,337	-10.1
Jul	30,750	29,220	-5.0	215,855	195,557	-9.4
Aug	32,519	29,259	-10.0	248,374	224,816	-9.5
Sep	29,245	28,766	-1.6	277,619	253,582	-8.7
Oct	29,659	27,478	-7.4	307,278	281,060	-8.5
Nov	27,268	24,267	-11.0	334,546	305,327	-8.7
Dec	26,202			360,748		
Lowfat Cottage Cheese						
Jan	34,550	32,838	-5.0	34,550	32,838	-5.0
Feb	31,662	32,100	1.4	66,212	64,938	-1.9
Mar	37,009	35,330	-4.5	103,221	100,268	-2.9
Apr	33,513	34,533	3.0	136,734	134,801	-1.4
May	36,850	35,416	-3.9	173,584	170,217	-1.9
Jun	36,453	32,700	-10.3	210,037	202,917	-3.4
Jul	35,972	33,539	-6.8	246,009	236,456	-3.9
Aug	39,402	33,553	-14.8	285,411	270,009	-5.4
Sep	35,559	33,251	-6.5	320,970	303,260	-5.5
Oct	36,566	32,338	-11.6	357,536	335,598	-6.1
Nov	32,720	27,169	-17.0	390,256	362,767	-7.0
Dec	30,588			420,844		
Sour Cream						
Jan	93,117	90,730	-2.6	93,117	90,730	-2.6
Feb	80,828	79,858	-1.2	173,945	170,588	-1.9
Mar	91,140	92,847	1.9	265,085	263,435	-0.6
Apr	87,891	83,225	-5.3	352,976	346,660	-1.8
May	94,972	93,902	-1.1	447,948	440,562	-1.6
Jun	88,709	89,009	0.3	536,657	529,571	-1.3
Jul	88,577	88,379	-0.2	625,234	617,950	-1.2
Aug	93,709	91,235	-2.6	718,943	709,185	-1.4
Sep	84,382	85,212	1.0	803,325	794,397	-1.1
Oct	100,133	96,520	-3.6	903,458	890,917	-1.4
Nov	110,008	99,230	-9.8	1,013,466	990,147	-2.3
Dec	98,460			1,111,926		

See footnote(s) at end of table.

--continued

**Dairy Products: Production by Product and Month,
United States, 2007-2008¹ (continued)**

Product and Month	By Month			Cumulative		
	2007	2008	Change From 2007	2007	2008	Change From 2007
	<i>1,000 Gallons</i>	<i>1,000 Gallons</i>	<i>Percent</i>	<i>1,000 Gallons</i>	<i>1,000 Gallons</i>	<i>Percent</i>
Ice Cream, Regular, Hard						
Jan	68,635	63,166	-8.0	68,635	63,166	-8.0
Feb	66,586	65,176	-2.1	135,221	128,342	-5.1
Mar	78,036	75,789	-2.9	213,257	204,131	-4.3
Apr	81,373	75,984	-6.6	294,630	280,115	-4.9
May	86,180	80,737	-6.3	380,810	360,852	-5.2
Jun	87,058	90,527	4.0	467,868	451,379	-3.5
Jul	84,428	83,458	-1.1	552,296	534,837	-3.2
Aug	79,740	78,639	-1.4	632,036	613,476	-2.9
Sep	70,121	76,182	8.6	702,157	689,658	-1.8
Oct	70,034	68,738	-1.9	772,191	758,396	-1.8
Nov	56,039	57,892	3.3	828,230	816,288	-1.4
Dec	53,521			881,751		
Ice Cream, Lowfat, Total						
Jan	27,158	24,680	-9.1	27,158	24,680	-9.1
Feb	27,169	28,051	3.2	54,327	52,731	-2.9
Mar	33,493	33,533	0.1	87,820	86,264	-1.8
Apr	35,004	36,992	5.7	122,824	123,256	0.4
May	39,094	39,020	-0.2	161,918	162,276	0.2
Jun	40,572	43,560	7.4	202,490	205,836	1.7
Jul	38,223	40,181	5.1	240,713	246,017	2.2
Aug	36,887	37,073	0.5	277,600	283,090	2.0
Sep	30,257	30,151	-0.4	307,857	313,241	1.7
Oct	29,258	27,213	-7.0	337,115	340,454	1.0
Nov	23,342	21,631	-7.3	360,457	362,085	0.5
Dec	22,163			382,620		
Sherbet, Hard						
Jan	3,941	4,027	2.2	3,941	4,027	2.2
Feb	4,380	4,232	-3.4	8,321	8,259	-0.7
Mar	5,630	5,633	0.1	13,951	13,892	-0.4
Apr	6,115	5,670	-7.3	20,066	19,562	-2.5
May	6,092	5,568	-8.6	26,158	25,130	-3.9
Jun	6,167	5,616	-8.9	32,325	30,746	-4.9
Jul	5,370	5,222	-2.8	37,695	35,968	-4.6
Aug	5,028	4,632	-7.9	42,723	40,600	-5.0
Sep	4,423	4,717	6.6	47,146	45,317	-3.9
Oct	4,145	4,177	0.8	51,291	49,494	-3.5
Nov	3,505	3,600	2.7	54,796	53,094	-3.1
Dec	3,443			58,239		

See footnote(s) at end of table.

--continued

**Dairy Products: Production by Product and Month,
United States, 2007-2008 ¹ (continued)**

Product and Month	By Month			Cumulative		
	2007	2008	Change From 2007	2007	2008	Change From 2007
	<i>1,000 Pounds</i>	<i>1,000 Pounds</i>	<i>Percent</i>	<i>1,000 Pounds</i>	<i>1,000 Pounds</i>	<i>Percent</i>
Yogurt, Plain & Flavored						
Jan	287,100	296,725	3.4	287,100	296,725	3.4
Feb	279,124	299,187	7.2	566,224	595,912	5.2
Mar	315,873	317,352	0.5	882,097	913,264	3.5
Apr	294,148	300,300	2.1	1,176,245	1,213,564	3.2
May	300,437	299,007	-0.5	1,476,682	1,512,571	2.4
Jun	284,869	293,243	2.9	1,761,551	1,805,814	2.5
Jul	278,479	282,221	1.3	2,040,030	2,088,035	2.4
Aug	299,954	293,399	-2.2	2,339,984	2,381,434	1.8
Sep	309,925	309,710	-0.1	2,649,909	2,691,144	1.6
Oct	301,028	292,356	-2.9	2,950,937	2,983,500	1.1
Nov	250,162	243,135	-2.8	3,201,099	3,226,635	0.8
Dec	276,628			3,477,727		
	<i>1,000 Gallons</i>	<i>1,000 Gallons</i>	<i>Percent</i>	<i>1,000 Gallons</i>	<i>1,000 Gallons</i>	<i>Percent</i>
Yogurt, Frozen						
Jan	4,291	3,577	-16.6	4,291	3,577	-16.6
Feb	4,300	4,133	-3.9	8,591	7,710	-10.3
Mar	5,706	5,856	2.6	14,297	13,566	-5.1
Apr	5,867	6,201	5.7	20,164	19,767	-2.0
May	5,838	6,722	15.1	26,002	26,489	1.9
Jun	6,391	6,717	5.1	32,393	33,206	2.5
Jul	5,554	5,462	-1.7	37,947	38,668	1.9
Aug	5,777	5,265	-8.9	43,724	43,933	0.5
Sep	5,040	4,815	-4.5	48,764	48,748	
Oct	4,402	4,485	1.9	53,166	53,233	0.1
Nov	4,026	3,663	-9.0	57,192	56,896	-0.5
Dec	3,520			60,712		

¹ October 2008 data revised.

² Includes protein standardized and blends.

³ Excludes all modified dry whey products.

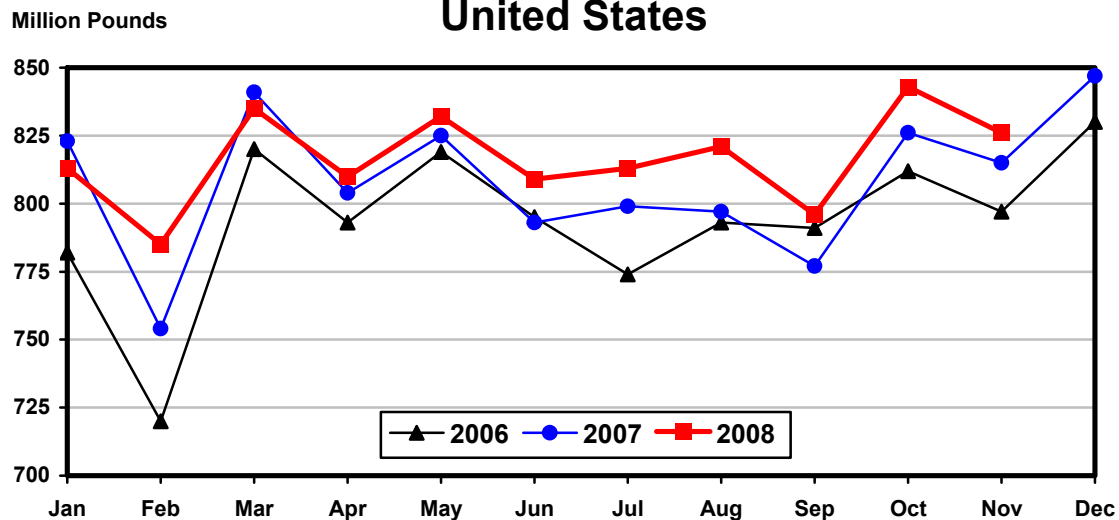
Total Cheese, Excluding Cottage Cheese: Production by State and United States, November 2007-2008

State	Nov 2007	Oct ¹ 2008	Nov 2008	Change From	
				Nov 2007	Oct 2008
	<i>1,000 Pounds</i>	<i>1,000 Pounds</i>	<i>1,000 Pounds</i>	<i>Percent</i>	<i>Percent</i>
CA	181,576	177,018	174,601	-3.8	-1.4
ID	64,815	68,199	66,788	3.0	-2.1
IL	6,701	6,628	6,562	-2.1	-1.0
IA	13,357	13,636	14,028	5.0	2.9
MN	49,810	53,467	53,652	7.7	0.3
NM	51,890	50,445	49,545	-4.5	-1.8
NY	63,829	66,543	62,997	-1.3	-5.3
OH	16,196	15,550	14,829	-8.4	-4.6
PA	34,610	31,392	30,051	-13.2	-4.3
SD	17,953	19,981	21,230	18.3	6.3
UT	8,993	9,765	9,914	10.2	1.5
VT	12,264	8,880	9,041	-26.3	1.8
WI	206,966	219,704	210,572	1.7	-4.2
Oth Sts ²	86,215	102,258	102,175	18.5	-0.1
US	815,175	843,466	825,985	1.3	-2.1
Atlantic	117,487	115,163	109,156	-7.1	-5.2
Central	348,023	374,471	369,655	6.2	-1.3
West	349,665	353,832	347,174	-0.7	-1.9

¹ Revised.

² States not shown when fewer than 3 plants reported or individual plant operations could be disclosed. Percent change shown only when comparable States are included in the calculation.

**Total Cheese Production
United States**



American Cheese: Production by State and United States, November 2007-2008

State	Nov 2007	Oct ¹ 2008	Nov 2008	Change From	
				Nov 2007	Oct 2008
	<i>1,000 Pounds</i>	<i>1,000 Pounds</i>	<i>1,000 Pounds</i>	<i>Percent</i>	<i>Percent</i>
CA	59,811	57,346	55,913	-6.5	-2.5
IA	10,799	11,280	11,399	5.6	1.1
MN	45,322	46,752	46,587	2.8	-0.4
OH	2,089	622	547	-73.8	-12.1
OR	9,427	14,697	14,149	50.1	-3.7
WI	66,068	69,436	68,676	3.9	-1.1
Oth Sts ²	131,152	142,997	143,241	9.2	0.2
US	324,668	343,130	340,512	4.9	-0.8
Atlantic	12,471	12,560	12,486	0.1	-0.6
Central	143,500	155,144	157,233	9.6	1.3
West	168,697	175,426	170,793	1.2	-2.6

¹ Revised.

² States not shown when fewer than 3 plants reported or individual plant operations could be disclosed. Percent change shown only when comparable States are included in the calculation.

Cheddar Cheese: Production by State and United States, November 2007-2008

State	Nov 2007	Oct ¹ 2008	Nov 2008	Change From	
				Nov 2007	Oct 2008
	<i>1,000 Pounds</i>	<i>1,000 Pounds</i>	<i>1,000 Pounds</i>	<i>Percent</i>	<i>Percent</i>
CA	35,215	30,213	30,503	-13.4	1.0
IA	7,932	8,027	8,319	4.9	3.6
MN	41,270	43,334	42,635	3.3	-1.6
OH	1,825	382	339	-81.4	-11.3
WI	53,995	52,322	52,876	-2.1	1.1
Oth Sts ²	112,943	120,979	124,235	10.0	2.7
US	253,180	255,257	258,907	2.3	1.4
Atlantic	11,908	12,118	12,066	1.3	-0.4
Central	119,059	121,771	126,378	6.1	3.8
West	122,213	121,368	120,463	-1.4	-0.7

¹ Revised.

² States not shown when fewer than 3 plants reported or individual plant operations could be disclosed. Percent change shown only when comparable States are included in the calculation.

Italian Cheese, Total: Production by State and United States, November 2007-2008

State	Nov 2007	Oct ¹ 2008	Nov 2008	Change From	
				Nov 2007	Oct 2008
	<i>1,000 Pounds</i>	<i>1,000 Pounds</i>	<i>1,000 Pounds</i>	<i>Percent</i>	<i>Percent</i>
CA	104,043	103,832	102,080	-1.9	-1.7
ID	10,581	11,999	11,128	5.2	-7.3
NY	35,203	34,097	33,222	-5.6	-2.6
PA	21,031	17,363	16,240	-22.8	-6.5
SD	10,321				
WI	95,882	99,903	96,177	0.3	-3.7
Oth Sts ²	68,797	76,935	77,753		
US	345,858	344,129	336,600	-2.7	-2.2
Atlantic	64,990	58,333	55,302	-14.9	-5.2
Central	129,300	134,773	133,376	3.2	-1.0
West	151,568	151,023	147,922	-2.4	-2.1

¹ Revised.

² States not shown when fewer than 3 plants reported or individual plant operations could be disclosed. Percent change shown only when comparable States are included in the calculation.

Mozzarella Cheese: Production by State and United States, November 2007-2008

State	Nov 2007	Oct ¹ 2008	Nov 2008	Change From	
				Nov 2007	Oct 2008
	<i>1,000 Pounds</i>	<i>1,000 Pounds</i>	<i>1,000 Pounds</i>	<i>Percent</i>	<i>Percent</i>
CA	93,947	92,802	91,895	-2.2	-1.0
NY	16,174	15,872	16,238	0.4	2.3
PA	18,177	14,555	13,334	-26.6	-8.4
WI	69,865	69,188	66,400	-5.0	-4.0
Oth Sts ²	75,335	71,489	72,342	-4.0	1.2
US	273,498	263,906	260,209	-4.9	-1.4
Atlantic	39,839	34,167	32,723	-17.9	-4.2
Central	95,010	92,596	92,121	-3.0	-0.5
West	138,649	137,143	135,365	-2.4	-1.3

¹ Revised.

² States not shown when fewer than 3 plants reported or individual plant operations could be disclosed. Percent change shown only when comparable States are included in the calculation.

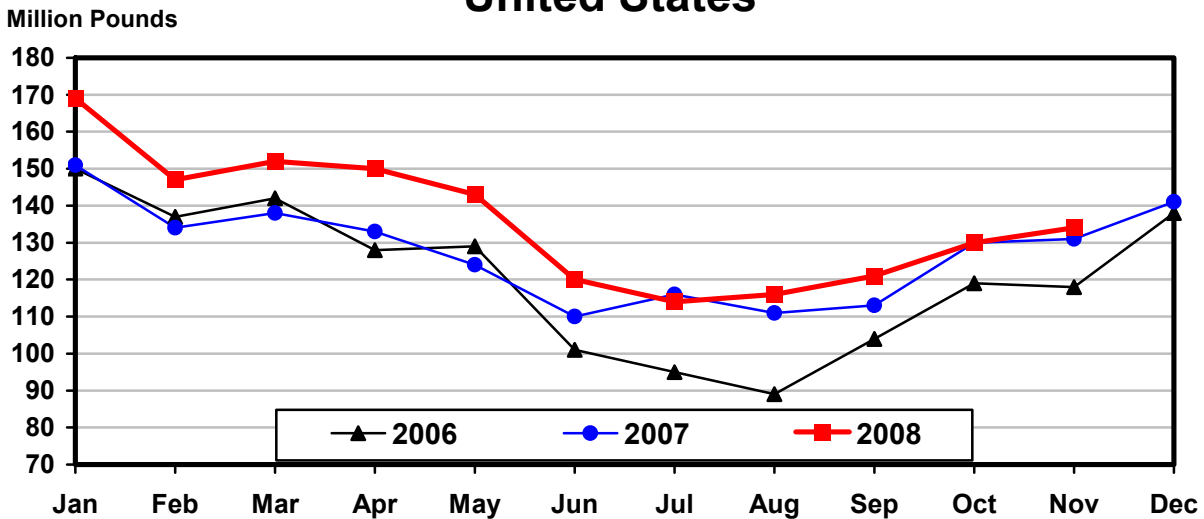
Butter: Production by State and United States, November 2007-2008

State	Nov 2007	Oct ¹ 2008	Nov 2008	Change From	
				Nov 2007	Oct 2008
	<i>1,000 Pounds</i>	<i>1,000 Pounds</i>	<i>1,000 Pounds</i>	<i>Percent</i>	<i>Percent</i>
CA	43,702	44,401	45,742	4.7	3.0
NY	1,066	1,324	1,181	10.8	-10.8
PA	5,726	4,364	5,782	1.0	32.5
WI	31,992	30,194	28,968	-9.5	-4.1
Oth Sts ²	48,312	49,764	51,958	7.5	4.4
US	130,798	130,047	133,631	2.2	2.8
Atlantic	9,134	8,187	9,586	4.9	17.1
Central	57,320	54,272	56,514	-1.4	4.1
West	64,344	67,588	67,531	5.0	-0.1

¹ Revised.

² States not shown when fewer than 3 plants reported or individual plant operations could be disclosed. Percent change shown only when comparable States are included in the calculation.

Total Butter Production United States



**Nonfat Dry Milk, Human: Production by State
and United States, November 2007-2008**

State	Nov 2007	Oct ¹ 2008	Nov 2008	Change From	
				Nov 2007	Oct 2008
	<i>1,000 Pounds</i>	<i>1,000 Pounds</i>	<i>1,000 Pounds</i>	<i>Percent</i>	<i>Percent</i>
CA	59,440	74,872	72,402	21.8	-3.3
Oth Sts ²	40,554	46,089	62,399	53.9	35.4
US	99,994	120,961	134,801	34.8	11.4
Atlantic	11,421	12,998	14,497	26.9	11.5
Central	10,302	8,952	12,430	20.7	38.9
West	78,271	99,011	107,874	37.8	9.0

¹ Revised.

² States not shown when fewer than 3 plants reported or individual plant operations could be disclosed. Percent change shown only when comparable States are included in the calculation.

**Dry Whey, Human: Production by State
and United States, November 2007-2008**

State	Nov 2007	Oct ¹ 2008	Nov 2008	Change From	
				Nov 2007	Oct 2008
	<i>1,000 Pounds</i>	<i>1,000 Pounds</i>	<i>1,000 Pounds</i>	<i>Percent</i>	<i>Percent</i>
CA	8,393				
NY	8,992	10,594	10,435	16.0	-1.5
WI	28,005	22,823	23,300	-16.8	2.1
Oth Sts ²	42,892	47,781	47,059		
US	88,282	81,198	80,794	-8.5	-0.5
Atlantic	17,410	18,386	16,978	-2.5	-7.7
Central	43,346	36,222	37,761	-12.9	4.2
West	27,526	26,590	26,055	-5.3	-2.0

¹ Revised.

² States not shown when fewer than 3 plants reported or individual plant operations could be disclosed. Percent change shown only when comparable States are included in the calculation.

**Ice Cream, Regular, Hard: Production by State and United States,
November 2007-2008**

State	Nov 2007	Oct ¹ 2008	Nov 2008	Change From	
				Nov 2007	Oct 2008
	<i>1,000 Gallons</i>	<i>1,000 Gallons</i>	<i>1,000 Gallons</i>	<i>Percent</i>	<i>Percent</i>
CA	9,186	9,429	9,045	-1.5	-4.1
FL	1,440				
IN	4,270	6,747	6,875	61.0	1.9
MO	984	2,242	1,342	36.4	-40.1
NY	1,911	2,696	2,393	25.2	-11.2
NC	827	1,417	1,049	26.8	-26.0
OH	1,785	2,088	1,434	-19.7	-31.3
OR	923	1,370	960	4.0	-29.9
PA	2,206	3,110	2,375	7.7	-23.6
TN	993	1,563	1,385	39.5	-11.4
TX	4,096	4,519	3,803	-7.2	-15.8
UT	1,790	1,913	2,211	23.5	15.6
Oth Sts ²	25,628	31,644	25,020		
US	56,039	68,738	57,892	3.3	-15.8
N Atl	9,011	11,077	9,075	0.7	-18.1
S Atl	4,353	5,508	4,624	6.2	-16.0
E N Cen	11,077	14,870	12,826	15.8	-13.7
W N Cen	9,646	12,375	7,692	-20.3	-37.8
S Cen	8,208	9,447	9,340	13.8	-1.1
West	13,744	15,461	14,335	4.3	-7.3

¹ Revised.

² States not shown when fewer than 3 plants reported or individual plant operations could be disclosed. Percent change shown only when comparable States are included in the calculation.

**Canned Milk and Dry Milk Products: Manufacturers' Shipments,
and Stocks, November, 2007-2008**

Product	Nov 2007	Oct 2008 ¹	Nov 2008	Change From	
				Nov 2007	Oct 2008
	Manufacturers' Shipments ²				
	<i>1,000 Pounds</i>	<i>1,000 Pounds</i>	<i>1,000 Pounds</i>	<i>Percent</i>	<i>Percent</i>
Nonfat Dry Milk, Human	79,040	110,058	120,568	52.5	9.5
	Manufacturers' Stocks End-of-Month ³				
	<i>1,000 Pounds</i>	<i>1,000 Pounds</i>	<i>1,000 Pounds</i>	<i>Percent</i>	<i>Percent</i>
Canned Evaporated and Condensed Whole Milk	37,791	62,181	46,037	21.8	-26.0
Nonfat Dry Milk, Human	136,923	145,987	166,327	21.5	13.9
Dry Buttermilk, Total	14,042	9,963	10,642	-24.2	6.8

¹ Revised.

² For dry products, shipments of bulk goods only.

³ Stocks held by manufacturers at all points and in transit.

Procedures and Reliability: Estimates included in this report are based on data provided each month by manufacturers of these products. In 32 States, the State Departments of Agriculture assist in collection of data, which eliminates duplicate reporting and reduces respondent burden. Data are collected by mail, personal and telephone interviews following the close of each month. There were 1,109 manufacturers that made one or more products in 2007. Each month, reports are generally received from all dairy plants in States with small numbers of plants. In States with large numbers of plants, survey procedures are designed to obtain monthly reports from all large plants and from a sample of small plants. Monthly estimates are based upon returns from about 70 percent of the plants which account for 70 to 90 percent of the total production of major dairy products.

Revision Policy: Monthly estimates are subject to revision the month following the preliminary estimates. Annual estimates are published in the "**Dairy Products**" report published each April which includes any revisions made to current and previous year. An attempt is made to get information from all plants for preparing these estimates

Information Contacts

Listed below are the commodity specialists in the Livestock Branch of the National Agricultural Statistics Service to contact for additional information.

Dan Kerestes, Chief, Livestock Branch (202) 720-3570

Livestock Section

Scott Hollis, Head, Livestock Section (202) 690-2424
 Jim Collom - Dairy Products (202) 690-3236
 Joe Gaynor - Dairy Products Prices (202) 690-2168
 Jason Hardegree - Cattle, Cattle on Feed (202) 720-3040
 Benita Hodge - Livestock Slaughter (515) 284-4340
 Everett Olbert - Sheep and Goats (202) 720-4751
 Mike Miller - Milk Production and Milk Cows (202) 720-3278
 Nick Streff - Hogs and Pigs (202) 720-3106

ACCESS TO REPORTS!!

For your convenience, there are several ways to obtain NASS reports, data products, and services:

INTERNET ACCESS

All NASS reports are available free of charge on the worldwide Internet. For access, connect to the Internet and go to the NASS Home Page at: www.nass.usda.gov.

E-MAIL SUBSCRIPTION

All NASS reports are available by subscription free of charge direct to your e-mail address. Starting with the NASS Home Page at www.nass.usda.gov, under the right navigation, *Receive reports by Email*, click on **National** or **State**. Follow the instructions on the screen.

PRINTED REPORTS OR DATA PRODUCTS

CALL OUR TOLL-FREE ORDER DESK: 800-999-6779 (U.S. and Canada)
Other areas, please call 703-605-6220 FAX: 703-605-6900
(Visa, MasterCard, check, or money order acceptable for payment.)

ASSISTANCE

For **assistance** with general agricultural statistics or further information about NASS or its products or services, contact the **Agricultural Statistics Hotline** at **800-727-9540**, 7:30 a.m. to 4:00 p.m. ET, or e-mail: nass@nass.usda.gov.

The U.S. Department of Agriculture (USDA) prohibits discrimination in all its programs and activities on the basis of race, color, national origin, age, disability, and where applicable, sex, marital status, familial status, parental status, religion, sexual orientation, genetic information, political beliefs, reprisal, or because all or a part of an individual's income is derived from any public assistance program. (Not all prohibited bases apply to all programs.) Persons with disabilities who require alternative means for communication of program information (Braille, large print, audiotape, etc.) should contact USDA's TARGET Center at (202) 720-2600 (voice and TDD).

To file a complaint of discrimination, write to USDA, Director, Office of Civil Rights, 1400 Independence Avenue, S.W., Washington, D.C. 20250-9410, or call (800) 795-3272 (voice) or (202) 720-6382 (TDD). USDA is an equal opportunity provider and employer.