

---

Released August 4, 2009, by the National Agricultural Statistics Service (NASS), Agricultural Statistics Board, U.S. Department of Agriculture. For information on *Dairy Products* call Jim Collom at (202) 690-3236, office hours 7:00 a.m. to 3:30 p.m. ET.

## June 2009 Highlights

**Total cheese** output (excluding cottage cheese) was 833 million pounds, 2.0 percent above June 2008 but 3.1 percent below May 2009.

**Italian type cheese** production totaled 343 million pounds, 2.0 percent above June 2008 but 1.9 percent below May 2009.

**American type cheese** production totaled 353 million pounds, 4.8 percent above June 2008 but 3.7 percent below May 2009.

**Butter** production was 125 million pounds, 7.5 percent above June 2008 but 10.0 percent below May 2009.

**Dry Milk Powders:** (comparisons with June 2008)

Nonfat dry milk, human --- 145 million pounds, up 6.3 percent.

Skim milk powders --- 16.8 million pounds, down 50.4 percent.

**Whey products:** (comparisons with June 2008)

Dry whey, total --- 92.0 million pounds, down 3.2 percent.

Lactose, human and animal --- 60.1 million pounds, down 5.2 percent.

Whey protein concentrate, total --- 33.8 million pounds, down 2.3 percent.

**Frozen products:** (comparisons with June 2008)

Ice cream, Regular (hard) --- 89.6 million gallons, down 2.6 percent.

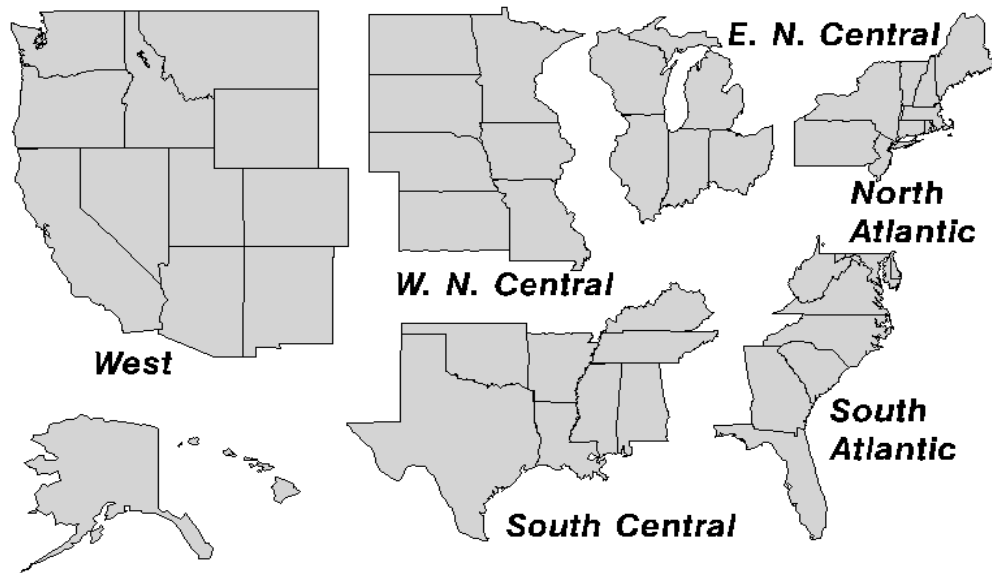
Ice cream, Lowfat (total) --- 42.0 million gallons, up 0.5 percent.

Sherbet (hard) --- 5.56 million gallons, up slightly.

Frozen Yogurt (total) --- 6.65 million gallons, down 11.3 percent.

## U. S. Geographic Regions Dairy Products

If a region is unable to be published for confidentiality reasons, it will be combined with other regions when possible. For example, if North Atlantic can not be published, it will be combined with South Atlantic to publish Atlantic. The West North Central and East North Central will be combined, if necessary, to form North Central. In the event that neither could be published, they may be combined with South Central to publish Central. Some tables will have only limited regions shown, therefore the regions may not add to the United States total.



## Contents

## Page

Dairy Products: Production by Product, United States .....	1
Whey and Modified Whey Products: Production, Stocks, and Prices, United States.....	2
Dairy Products: Production by Product and Month, United States.....	3
Select Commodities by State and United States .....	10
Canned Milk and Dry Milk Products: Manufacturers' Shipments and Stocks.....	15
Procedures and Reliability .....	16
Information Contacts .....	16

**Dairy Products: Production by Product,  
United States, June, 2008-2009**

Product	Jun 2008	May 2009 <sup>1</sup>	Jun 2009	Change From	
				Jun 2008	May 2009
	<i>1,000 Pounds</i>	<i>1,000 Pounds</i>	<i>1,000 Pounds</i>	<i>Percent</i>	<i>Percent</i>
Butter	116,713	139,373	125,469	7.5	-10.0
Cheese					
American Types <sup>2</sup>	336,745	366,464	353,006	4.8	-3.7
Cheddar	260,962	285,473	272,504	4.4	-4.5
Other American	75,783	80,991	80,502	6.2	-0.6
Swiss	25,968	26,776	27,209	4.8	1.6
Brick and Muenster	12,077	9,680	10,484	-13.2	8.3
Cream and Neufchatel	64,268	63,602	58,121	-9.6	-8.6
Hispanic	15,394	16,162	16,160	5.0	
Italian Types	336,646	349,963	343,430	2.0	-1.9
Mozzarella	262,443	273,405	269,030	2.5	-1.6
Other Italian	74,203	76,558	74,400	0.3	-2.8
All Other Types	25,127	27,028	24,275	-3.4	-10.2
Total Cheese	816,225	859,675	832,685	2.0	-3.1
Cottage Cheese, Curd <sup>3</sup>	35,195	39,406	37,887	7.6	-3.9
Cottage Cheese, Cream <sup>4</sup>	27,000	31,721	30,557	13.2	-3.7
Cottage Cheese, Lowfat <sup>5</sup>	32,074	32,932	33,214	3.6	0.9
Canned Evaporated and Condensed Whole Milk	54,228	49,240	49,903	-8.0	1.3
Dry Whole Milk	4,954	4,723	3,337	-32.6	-29.3
Nonfat Dry Milk, Human Skim Milk Powders <sup>6</sup>	135,979	149,218	144,571	6.3	-3.1
Dry Skim Milk, Animal	646	766	949	46.9	23.9
Dry Buttermilk	5,248	5,526	6,224	18.6	12.6
Sour Cream	90,846	94,799	95,106	4.7	0.3
Yogurt, Plain & Flavored	297,939	325,561	334,483	12.3	2.7
	<i>1,000 Gallons</i>	<i>1,000 Gallons</i>	<i>1,000 Gallons</i>	<i>Percent</i>	<i>Percent</i>
Frozen Products					
Ice Cream, Regular, Hard	91,952	80,636	89,578	-2.6	11.1
Ice Cream, Lowfat, Hard	15,183	12,682	14,957	-1.5	17.9
Ice Cream, Lowfat, Soft	26,655	23,830	27,089	1.6	13.7
Ice Cream, Lowfat, Total	41,838	36,512	42,046	0.5	15.2
Ice Cream, Nonfat, Hard	1,151	1,208	1,500	30.3	24.2
Sherbet, Hard	5,546	4,989	5,560	0.3	11.4
Water and Juice Ices	6,592	7,316	6,958	5.6	-4.9
Frozen Yogurt, Total	7,493	5,966	6,646	-11.3	11.4
Regular & Lowfat, Hard	2,061	1,573	1,770	-14.1	12.5
Nonfat, Hard	829	775	818	-1.3	5.5
Other Frozen Dairy Products	1,592	1,283	1,526	-4.1	18.9
Mix for Frozen Products					
Ice Cream Mix	49,335	45,363	49,682	0.7	9.5
Ice Cream, Lowfat, Mix	24,168	20,944	24,093	-0.3	15.0
Ice Cream, Nonfat, Mix	716	765	888	24.0	16.1
Sherbet Mix	3,562	3,231	3,583	0.6	10.9
Yogurt Mix	4,487	3,616	4,028	-10.2	11.4

<sup>1</sup> Revised.

<sup>2</sup> Includes Cheddar, Colby, Monterey, and Jack.

<sup>3</sup> Mostly used for processing into cream or lowfat cottage cheese.

<sup>4</sup> Fat content 4 percent or more.

<sup>5</sup> Fat content less than 4 percent.

<sup>6</sup> Includes protein standardized and blends.

**Whey and Modified Whey Products: Production, Stocks,  
and Prices, United States, June, 2008-2009**

Product	Jun 2008	May 2009 <sup>1</sup>	Jun 2009	Change From	
				Jun 2008	May 2009
<b>Production</b>					
	<i>1,000 Pounds</i>	<i>1,000 Pounds</i>	<i>1,000 Pounds</i>	<i>Percent</i>	<i>Percent</i>
Condensed Whey, Solids Content <sup>2</sup>					
Sweet-Type, Human	7,948	7,966	7,422	-6.6	-6.8
Dry Whey Products					
Dry Whey, Human	89,404	90,052	87,597	-2.0	-2.7
Dry Whey, Animal	5,641	3,809	4,375	-22.4	14.9
Dry Whey, Total	95,045	93,861	91,972	-3.2	-2.0
Reduced Lactose and Minerals					
Human Food	3,651	2,695	3,144	-13.9	16.7
Animal Feed	4,214	4,745	3,981	-5.5	-16.1
Lactose, Human and Animal	63,383	59,991	60,090	-5.2	0.2
Whey					
Protein Concentrate					
Human <sup>3</sup>	32,406	31,647	31,017	-4.3	-2.0
Animal <sup>3</sup>	2,165	3,134	2,774	28.1	-11.5
Total <sup>3</sup>	34,571	34,781	33,791	-2.3	-2.8
25.0-49.9 Percent <sup>4</sup>	23,416	22,640	22,130	-5.5	-2.3
50.0-89.9 Percent <sup>4</sup>	11,155	12,141	11,661	4.5	-4.0
Protein Isolates <sup>5</sup>	3,541	3,973	4,532	28.0	14.1
<b>Manufacturers' Stocks End-of-Month <sup>6</sup></b>					
	<i>1,000 Pounds</i>	<i>1,000 Pounds</i>	<i>1,000 Pounds</i>	<i>Percent</i>	<i>Percent</i>
Dry Whey Products					
Dry Whey, Human	57,235	48,915	47,160	-17.6	-3.6
Dry Whey, Animal	5,868	1,565	1,742	-70.3	11.3
Dry Whey, Total	63,103	50,480	48,902	-22.5	-3.1
Reduced Lactose and Minerals					
Human and Animal <sup>7</sup>	17,053	15,184	14,479	-15.1	-4.6
Lactose, Human and Animal	88,011	73,342	65,406	-25.7	-10.8
Whey					
Protein Concentrate					
Human <sup>3</sup>	46,237	34,850	34,404	-25.6	-1.3
Animal <sup>3</sup>	904	2,377	2,354	160.4	-1.0
Total <sup>3</sup>	47,141	37,227	36,758	-22.0	-1.3
25.0-49.9 Percent <sup>4</sup>	32,425	22,151	22,440	-30.8	1.3
50.0-89.9 Percent <sup>4</sup>	14,716	15,076	14,318	-2.7	-5.0
<b>Manufacturers' Selling Price <sup>8</sup></b>					
	<i>Cents per Pound</i>	<i>Cents per Pound</i>	<i>Cents per Pound</i>	<i>Cents Change</i>	<i>Cents Change</i>
Dry Whey, Animal	20.4	21.4	25.3	4.9	3.9

<sup>1</sup> Revised.

<sup>2</sup> Final marketable product only. Does not include quantity used or shipped to another plant for further processing into dry whey or modified whey products. Does not include sweet-type, animal whey.

<sup>3</sup> Whey Protein Concentrate, 25.0 to 89.9 percent.

<sup>4</sup> Whey Protein Concentrate, Human and Animal.

<sup>5</sup> Whey Protein Isolate, 90.0 percent or greater.

<sup>6</sup> Stocks held by manufacturers at all points and in transit.

<sup>7</sup> Reduced lactose and minerals stocks combined to avoid disclosure of individual operations.

<sup>8</sup> Prices for bulk goods, f.o.b. plant. Average monthly prices reported by firms.

**Dairy Products: Production by Product and Month,  
United States, 2008-2009 <sup>1</sup>**

Product and Month	By Month			Cumulative		
	2008	2009	Change From 2008	2008	2009	Change From 2008
	<i>1,000 Pounds</i>	<i>1,000 Pounds</i>	<i>Percent</i>	<i>1,000 Pounds</i>	<i>1,000 Pounds</i>	<i>Percent</i>
<b>Total Cheese</b>						
Jan	821,181	823,961	0.3	821,181	823,961	0.3
Feb	792,408	769,821	-2.9	1,613,589	1,593,782	-1.2
Mar	843,830	870,828	3.2	2,457,419	2,464,610	0.3
Apr	820,401	845,270	3.0	3,277,820	3,309,880	1.0
May	838,551	859,675	2.5	4,116,371	4,169,555	1.3
Jun	816,225	832,685	2.0	4,932,596	5,002,240	1.4
Jul	822,182			5,754,778		
Aug	828,318			6,583,096		
Sep	809,580			7,392,676		
Oct	850,203			8,242,879		
Nov	828,591			9,071,470		
Dec	863,060			9,934,530		
<b>American Cheese</b>						
Jan	336,700	353,224	4.9	336,700	353,224	4.9
Feb	321,479	320,751	-0.2	658,179	673,975	2.4
Mar	340,830	359,029	5.3	999,009	1,033,004	3.4
Apr	340,115	351,162	3.2	1,339,124	1,384,166	3.4
May	352,587	366,464	3.9	1,691,711	1,750,630	3.5
Jun	336,745	353,006	4.8	2,028,456	2,103,636	3.7
Jul	341,914			2,370,370		
Aug	339,841			2,710,211		
Sep	320,793			3,031,004		
Oct	343,192			3,374,196		
Nov	338,220			3,712,416		
Dec	358,878			4,071,294		
<b>Cheddar Cheese</b>						
Jan	264,585	274,091	3.6	264,585	274,091	3.6
Feb	253,176	241,474	-4.6	517,761	515,565	-0.4
Mar	268,179	273,581	2.0	785,940	789,146	0.4
Apr	270,445	268,897	-0.6	1,056,385	1,058,043	0.2
May	274,765	285,473	3.9	1,331,150	1,343,516	0.9
Jun	260,962	272,504	4.4	1,592,112	1,616,020	1.5
Jul	265,249			1,857,361		
Aug	257,249			2,114,610		
Sep	238,336			2,352,946		
Oct	255,411			2,608,357		
Nov	257,466			2,865,823		
Dec	283,307			3,149,130		

See footnote(s) at end of table.

--continued

**Dairy Products: Production by Product and Month,  
United States, 2008-2009<sup>1</sup> (continued)**

Product and Month	By Month			Cumulative		
	2008	2009	Change From 2008	2008	2009	Change From 2008
	<i>1,000 Pounds</i>	<i>1,000 Pounds</i>	<i>Percent</i>	<i>1,000 Pounds</i>	<i>1,000 Pounds</i>	<i>Percent</i>
<b>Italian Cheese</b>						
Jan	355,109	347,897	-2.0	355,109	347,897	-2.0
Feb	339,375	319,870	-5.7	694,484	667,767	-3.8
Mar	363,145	362,867	-0.1	1,057,629	1,030,634	-2.6
Apr	349,049	350,267	0.3	1,406,678	1,380,901	-1.8
May	349,033	349,963	0.3	1,755,711	1,730,864	-1.4
Jun	336,646	343,430	2.0	2,092,357	2,074,294	-0.9
Jul	337,254			2,429,611		
Aug	336,569			2,766,180		
Sep	339,473			3,105,653		
Oct	348,051			3,453,704		
Nov	340,383			3,794,087		
Dec	363,941			4,158,028		
<b>Mozzarella</b>						
Jan	282,325	268,056	-5.1	282,325	268,056	-5.1
Feb	267,174	247,418	-7.4	549,499	515,474	-6.2
Mar	288,152	281,087	-2.5	837,651	796,561	-4.9
Apr	275,693	272,270	-1.2	1,113,344	1,068,831	-4.0
May	273,126	273,405	0.1	1,386,470	1,342,236	-3.2
Jun	262,443	269,030	2.5	1,648,913	1,611,266	-2.3
Jul	261,510			1,910,423		
Aug	260,268			2,170,691		
Sep	260,972			2,431,663		
Oct	266,114			2,697,777		
Nov	261,641			2,959,418		
Dec	279,973			3,239,391		
<b>Other Italian</b>						
Jan	72,784	79,841	9.7	72,784	79,841	9.7
Feb	72,201	72,452	0.3	144,985	152,293	5.0
Mar	74,993	81,780	9.1	219,978	234,073	6.4
Apr	73,356	77,997	6.3	293,334	312,070	6.4
May	75,907	76,558	0.9	369,241	388,628	5.3
Jun	74,203	74,400	0.3	443,444	463,028	4.4
Jul	75,744			519,188		
Aug	76,301			595,489		
Sep	78,501			673,990		
Oct	81,937			755,927		
Nov	78,742			834,669		
Dec	83,968			918,637		

See footnote(s) at end of table.

--continued

**Dairy Products: Production by Product and Month,  
United States, 2008-2009 <sup>1</sup> (continued)**

Product and Month	By Month			Cumulative		
	2008	2009	Change From 2008	2008	2009	Change From 2008
	<i>1,000 Pounds</i>	<i>1,000 Pounds</i>	<i>Percent</i>	<i>1,000 Pounds</i>	<i>1,000 Pounds</i>	<i>Percent</i>
<b>Butter</b>						
Jan	169,218	174,684	3.2	169,218	174,684	3.2
Feb	146,737	145,687	-0.7	315,955	320,371	1.4
Mar	149,851	147,245	-1.7	465,806	467,616	0.4
Apr	149,984	142,509	-5.0	615,790	610,125	-0.9
May	139,858	139,373	-0.3	755,648	749,498	-0.8
Jun	116,713	125,469	7.5	872,361	874,967	0.3
Jul	114,185			986,546		
Aug	115,939			1,102,485		
Sep	121,035			1,223,520		
Oct	130,633			1,354,153		
Nov	133,586			1,487,739		
Dec	156,339			1,644,078		
<b>Nonfat Dry Milk, Human</b>						
Jan	112,970	154,812	37.0	112,970	154,812	37.0
Feb	121,107	122,812	1.4	234,077	277,624	18.6
Mar	136,993	135,277	-1.3	371,070	412,901	11.3
Apr	134,861	138,529	2.7	505,931	551,430	9.0
May	131,607	149,218	13.4	637,538	700,648	9.9
Jun	135,979	144,571	6.3	773,517	845,219	9.3
Jul	134,875			908,392		
Aug	115,205			1,023,597		
Sep	85,541			1,109,138		
Oct	121,071			1,230,209		
Nov	133,702			1,363,911		
Dec	155,262			1,519,173		
<b>Skim Milk Powders <sup>2</sup></b>						
Jan	45,614	17,663	-61.3	45,614	17,663	-61.3
Feb	33,804	22,693	-32.9	79,418	40,356	-49.2
Mar	34,428	24,432	-29.0	113,846	64,788	-43.1
Apr	36,137	24,645	-31.8	149,983	89,433	-40.4
May	45,511	26,731	-41.3	195,494	116,164	-40.6
Jun	33,873	16,796	-50.4	229,367	132,960	-42.0
Jul	27,120			256,487		
Aug	26,649			283,136		
Sep	38,868			322,004		
Oct	17,556			339,560		
Nov	16,477			356,037		
Dec	17,793			373,830		

See footnote(s) at end of table.

--continued



**Dairy Products: Production by Product and Month,  
United States, 2008-2009<sup>1</sup> (continued)**

Product and Month	By Month			Cumulative		
	2008	2009	Change From 2008	2008	2009	Change From 2008
	<i>1,000 Pounds</i>	<i>1,000 Pounds</i>	<i>Percent</i>	<i>1,000 Pounds</i>	<i>1,000 Pounds</i>	<i>Percent</i>
Dry Whey, Total <sup>3</sup>						
Jan	93,939	88,464	-5.8	93,939	88,464	-5.8
Feb	89,200	82,869	-7.1	183,139	171,333	-6.4
Mar	99,767	92,213	-7.6	282,906	263,546	-6.8
Apr	98,668	92,690	-6.1	381,574	356,236	-6.6
May	99,025	93,861	-5.2	480,599	450,097	-6.3
Jun	95,045	91,972	-3.2	575,644	542,069	-5.8
Jul	91,512			667,156		
Aug	89,253			756,409		
Sep	85,891			842,300		
Oct	87,708			930,008		
Nov	86,416			1,016,424		
Dec	91,115			1,107,539		
Lactose, Human and Animal						
Jan	62,275	59,807	-4.0	62,275	59,807	-4.0
Feb	60,504	51,610	-14.7	122,779	111,417	-9.3
Mar	64,289	59,224	-7.9	187,068	170,641	-8.8
Apr	63,817	58,491	-8.3	250,885	229,132	-8.7
May	65,588	59,991	-8.5	316,473	289,123	-8.6
Jun	63,383	60,090	-5.2	379,856	349,213	-8.1
Jul	65,229			445,085		
Aug	63,488			508,573		
Sep	58,834			567,407		
Oct	60,005			627,412		
Nov	57,454			684,866		
Dec	60,429			745,295		
Whey Protein Concentrate, Total						
Jan	35,241	34,185	-3.0	35,241	34,185	-3.0
Feb	33,598	31,243	-7.0	68,839	65,428	-5.0
Mar	36,552	33,840	-7.4	105,391	99,268	-5.8
Apr	36,286	31,888	-12.1	141,677	131,156	-7.4
May	37,046	34,781	-6.1	178,723	165,937	-7.2
Jun	34,571	33,791	-2.3	213,294	199,728	-6.4
Jul	36,787			250,081		
Aug	34,822			284,903		
Sep	33,081			317,984		
Oct	35,830			353,814		
Nov	33,805			387,619		
Dec	36,028			423,647		

See footnote(s) at end of table.

--continued

**Dairy Products: Production by Product and Month,  
United States, 2008-2009 <sup>1</sup> (continued)**

Product and Month	By Month			Cumulative		
	2008	2009	Change From 2008	2008	2009	Change From 2008
	<i>1,000 Pounds</i>	<i>1,000 Pounds</i>	<i>Percent</i>	<i>1,000 Pounds</i>	<i>1,000 Pounds</i>	<i>Percent</i>
<b>Cream Cottage Cheese</b>						
Jan	26,831	26,400	-1.6	26,831	26,400	-1.6
Feb	25,187	26,713	6.1	52,018	53,113	2.1
Mar	27,822	30,807	10.7	79,840	83,920	5.1
Apr	26,229	31,287	19.3	106,069	115,207	8.6
May	28,849	31,721	10.0	134,918	146,928	8.9
Jun	27,000	30,557	13.2	161,918	177,485	9.6
Jul	28,930			190,848		
Aug	29,119			219,967		
Sep	28,487			248,454		
Oct	27,480			275,934		
Nov	24,163			300,097		
Dec	25,724			325,821		
<b>Lowfat Cottage Cheese</b>						
Jan	33,057	30,915	-6.5	33,057	30,915	-6.5
Feb	31,451	30,933	-1.6	64,508	61,848	-4.1
Mar	32,973	34,563	4.8	97,481	96,411	-1.1
Apr	33,773	34,652	2.6	131,254	131,063	-0.1
May	35,483	32,932	-7.2	166,737	163,995	-1.6
Jun	32,074	33,214	3.6	198,811	197,209	-0.8
Jul	33,416			232,227		
Aug	33,587			265,814		
Sep	34,019			299,833		
Oct	32,767			332,600		
Nov	27,098			359,698		
Dec	29,935			389,633		
<b>Sour Cream</b>						
Jan	92,190	86,957	-5.7	92,190	86,957	-5.7
Feb	81,494	81,338	-0.2	173,684	168,295	-3.1
Mar	93,193	97,476	4.6	266,877	265,771	-0.4
Apr	84,041	92,823	10.4	350,918	358,594	2.2
May	97,322	94,799	-2.6	448,240	453,393	1.1
Jun	90,846	95,106	4.7	539,086	548,499	1.7
Jul	91,042			630,128		
Aug	94,794			724,922		
Sep	88,541			813,463		
Oct	102,046			915,509		
Nov	105,245			1,020,754		
Dec	106,325			1,127,079		

See footnote(s) at end of table.

--continued

**Dairy Products: Production by Product and Month,  
United States, 2008-2009<sup>1</sup> (continued)**

Product and Month	By Month			Cumulative		
	2008	2009	Change From 2008	2008	2009	Change From 2008
	<i>1,000 Gallons</i>	<i>1,000 Gallons</i>	<i>Percent</i>	<i>1,000 Gallons</i>	<i>1,000 Gallons</i>	<i>Percent</i>
<b>Ice Cream, Regular, Hard</b>						
Jan	62,898	57,527	-8.5	62,898	57,527	-8.5
Feb	66,569	63,608	-4.4	129,467	121,135	-6.4
Mar	75,908	76,124	0.3	205,375	197,259	-4.0
Apr	77,122	79,517	3.1	282,497	276,776	-2.0
May	81,171	80,636	-0.7	363,668	357,412	-1.7
Jun	91,952	89,578	-2.6	455,620	446,990	-1.9
Jul	84,717			540,337		
Aug	78,790			619,127		
Sep	75,864			694,991		
Oct	70,723			765,714		
Nov	61,466			827,180		
Dec	53,734			880,914		
<b>Ice Cream, Lowfat, Total</b>						
Jan	25,673	23,788	-7.3	25,673	23,788	-7.3
Feb	27,723	26,518	-4.3	53,396	50,306	-5.8
Mar	32,192	35,860	11.4	85,588	86,166	0.7
Apr	36,386	35,182	-3.3	121,974	121,348	-0.5
May	37,585	36,512	-2.9	159,559	157,860	-1.1
Jun	41,838	42,046	0.5	201,397	199,906	-0.7
Jul	38,853			240,250		
Aug	36,122			276,372		
Sep	29,976			306,348		
Oct	27,291			333,639		
Nov	21,789			355,428		
Dec	21,794			377,222		
<b>Sherbet, Hard</b>						
Jan	3,935	3,552	-9.7	3,935	3,552	-9.7
Feb	4,060	3,980	-2.0	7,995	7,532	-5.8
Mar	5,358	5,090	-5.0	13,353	12,622	-5.5
Apr	5,536	5,106	-7.8	18,889	17,728	-6.1
May	5,448	4,989	-8.4	24,337	22,717	-6.7
Jun	5,546	5,560	0.3	29,883	28,277	-5.4
Jul	5,189			35,072		
Aug	4,523			39,595		
Sep	4,646			44,241		
Oct	4,176			48,417		
Nov	3,424			51,841		
Dec	3,442			55,283		

See footnote(s) at end of table.

--continued

**Dairy Products: Production by Product and Month,  
United States, 2008-2009 <sup>1</sup> (continued)**

Product and Month	By Month			Cumulative		
	2008	2009	Change From 2008	2008	2009	Change From 2008
	<i>1,000 Pounds</i>	<i>1,000 Pounds</i>	<i>Percent</i>	<i>1,000 Pounds</i>	<i>1,000 Pounds</i>	<i>Percent</i>
Yogurt, Plain & Flavored						
Jan	301,753	306,406	1.5	301,753	306,406	1.5
Feb	303,873	313,949	3.3	605,626	620,355	2.4
Mar	330,037	365,333	10.7	935,663	985,688	5.3
Apr	301,550	323,716	7.4	1,237,213	1,309,404	5.8
May	309,007	325,561	5.4	1,546,220	1,634,965	5.7
Jun	297,939	334,483	12.3	1,844,159	1,969,448	6.8
Jul	287,147			2,131,306		
Aug	304,917			2,436,223		
Sep	331,046			2,767,269		
Oct	301,458			3,068,727		
Nov	243,349			3,312,076		
Dec	287,183			3,599,259		
	<i>1,000 Gallons</i>	<i>1,000 Gallons</i>	<i>Percent</i>	<i>1,000 Gallons</i>	<i>1,000 Gallons</i>	<i>Percent</i>
Yogurt, Frozen						
Jan	5,419	3,430	-36.7	5,419	3,430	-36.7
Feb	5,716	4,752	-16.9	11,135	8,182	-26.5
Mar	7,237	6,161	-14.9	18,372	14,343	-21.9
Apr	7,400	6,077	-17.9	25,772	20,420	-20.8
May	7,576	5,966	-21.3	33,348	26,386	-20.9
Jun	7,493	6,646	-11.3	40,841	33,032	-19.1
Jul	6,977			47,818		
Aug	6,359			54,177		
Sep	5,782			59,959		
Oct	5,359			65,318		
Nov	4,431			69,749		
Dec	4,393			74,142		

<sup>1</sup> May 2009 data revised.

<sup>2</sup> Includes protein standardized and blends.

<sup>3</sup> Excludes all modified dry whey products.

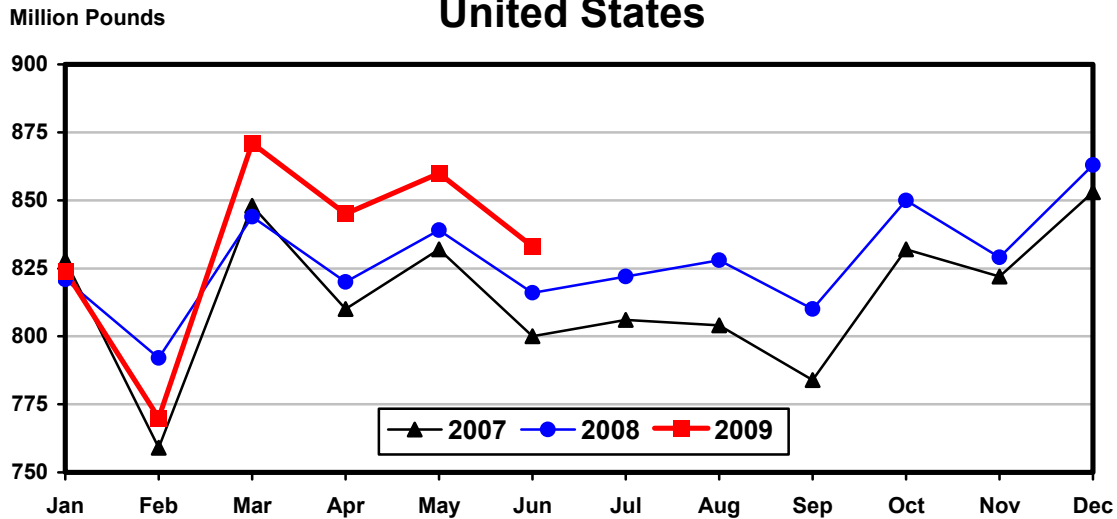
**Total Cheese, Excluding Cottage Cheese: Production by State and United States, June 2008-2009**

State	Jun 2008	May <sup>1</sup> 2009	Jun 2009	Change From	
				Jun 2008	May 2009
	<i>1,000 Pounds</i>	<i>1,000 Pounds</i>	<i>1,000 Pounds</i>	<i>Percent</i>	<i>Percent</i>
CA	172,402	175,495	165,386	-4.1	-5.8
ID	65,715	68,308	66,563	1.3	-2.6
IL	5,869	6,254	6,256	6.6	
IA	13,397	18,813	19,112	42.7	1.6
MN	52,261	57,485	53,770	2.9	-6.5
NJ	2,402	2,220	2,295	-4.5	3.4
NM	47,185	50,389	49,870	5.7	-1.0
NY	54,419	59,857	57,584	5.8	-3.8
OH	14,817	16,948	16,947	14.4	
PA	34,912	34,781	34,675	-0.7	-0.3
SD	17,735	20,327	19,745	11.3	-2.9
UT	9,850	8,606	8,892	-9.7	3.3
VT	11,019	13,004	9,744	-11.6	-25.1
WI	208,633	218,107	216,635	3.8	-0.7
Oth Sts <sup>2</sup>	105,609	109,081	105,211	-0.4	-3.5
US	816,225	859,675	832,685	2.0	-3.1
Atlantic	109,681	117,373	110,961	1.2	-5.5
Central	363,468	390,001	383,226	5.4	-1.7
West	343,076	352,301	338,498	-1.3	-3.9

<sup>1</sup> Revised.

<sup>2</sup> States not shown when fewer than 3 plants reported or individual plant operations could be disclosed. Percent change shown only when comparable States are included in the calculation.

**Total Cheese Production  
United States**



**American Cheese: Production by State and United States, June 2008-2009**

State	Jun 2008	May <sup>1</sup> 2009	Jun 2009	Change From	
				Jun 2008	May 2009
	<i>1,000 Pounds</i>	<i>1,000 Pounds</i>	<i>1,000 Pounds</i>	<i>Percent</i>	<i>Percent</i>
CA	52,808	58,599	55,209	4.5	-5.8
ID	51,203	55,439	53,855	5.2	-2.9
IA	10,862	14,460	15,011	38.2	3.8
OH	871	1,270	1,519	74.4	19.6
OR	13,918	14,898	14,403	3.5	-3.3
WI	69,428	73,114	70,400	1.4	-3.7
Oth Sts <sup>2</sup>	137,655	148,684	142,609	3.6	-4.1
US	336,745	366,464	353,006	4.8	-3.7
Atlantic	12,023	13,617	11,857	-1.4	-12.9
Central	155,310	175,117	168,801	8.7	-3.6
West	169,412	177,730	172,348	1.7	-3.0

<sup>1</sup> Revised.

<sup>2</sup> States not shown when fewer than 3 plants reported or individual plant operations could be disclosed. Percent change shown only when comparable States are included in the calculation.

**Cheddar Cheese: Production by State and United States, June 2008-2009**

State	Jun 2008	May <sup>1</sup> 2009	Jun 2009	Change From	
				Jun 2008	May 2009
	<i>1,000 Pounds</i>	<i>1,000 Pounds</i>	<i>1,000 Pounds</i>	<i>Percent</i>	<i>Percent</i>
CA	31,134	34,007	33,583	7.9	-1.2
ID	40,075	46,416	44,451	10.9	-4.2
IA	8,148	10,436	10,360	27.1	-0.7
MN	41,614	46,349	42,777	2.8	-7.7
OH	649	1,025	1,262	94.5	23.1
WI	53,762	56,795	54,400	1.2	-4.2
Oth Sts <sup>2</sup>	85,580	90,445	85,671	0.1	-5.3
US	260,962	285,473	272,504	4.4	-4.5
Atlantic	11,493	13,368	11,551	0.5	-13.6
Central	126,670	139,703	133,604	5.5	-4.4
West	122,799	132,402	127,349	3.7	-3.8

<sup>1</sup> Revised.

<sup>2</sup> States not shown when fewer than 3 plants reported or individual plant operations could be disclosed. Percent change shown only when comparable States are included in the calculation.

**Italian Cheese, Total: Production by State and United States, June 2008-2009**

State	Jun 2008	May <sup>1</sup> 2009	Jun 2009	Change From	
				Jun 2008	May 2009
	<i>1,000 Pounds</i>	<i>1,000 Pounds</i>	<i>1,000 Pounds</i>	<i>Percent</i>	<i>Percent</i>
CA	100,479	99,233	95,352	-5.1	-3.9
NY	28,887	32,396	30,859	6.8	-4.7
PA	21,934	22,711	22,752	3.7	0.2
WI	95,205	100,114	103,345	8.5	3.2
Oth Sts <sup>2</sup>	90,141	95,509	91,122	1.1	-4.6
US	336,646	349,963	343,430	2.0	-1.9
Atlantic	62,073	64,928	62,872	1.3	-3.2
Central	130,750	138,403	140,442	7.4	1.5
West	143,823	146,632	140,116	-2.6	-4.4

<sup>1</sup> Revised.

<sup>2</sup> States not shown when fewer than 3 plants reported or individual plant operations could be disclosed. Percent change shown only when comparable States are included in the calculation.

**Mozzarella Cheese: Production by State and United States, June 2008-2009**

State	Jun 2008	May <sup>1</sup> 2009	Jun 2009	Change From	
				Jun 2008	May 2009
	<i>1,000 Pounds</i>	<i>1,000 Pounds</i>	<i>1,000 Pounds</i>	<i>Percent</i>	<i>Percent</i>
CA	90,235	90,727	85,779	-4.9	-5.5
NY	16,510	17,421	17,478	5.9	0.3
WI	65,981	70,353	73,300	11.1	4.2
Oth Sts <sup>2</sup>	89,717	94,904	92,473	3.1	-2.6
US	262,443	273,405	269,030	2.5	-1.6
Atlantic	42,502	42,070	42,865	0.9	1.9
Central	89,264	96,026	98,436	10.3	2.5
West	130,677	135,309	127,729	-2.3	-5.6

<sup>1</sup> Revised.

<sup>2</sup> States not shown when fewer than 3 plants reported or individual plant operations could be disclosed. Percent change shown only when comparable States are included in the calculation.

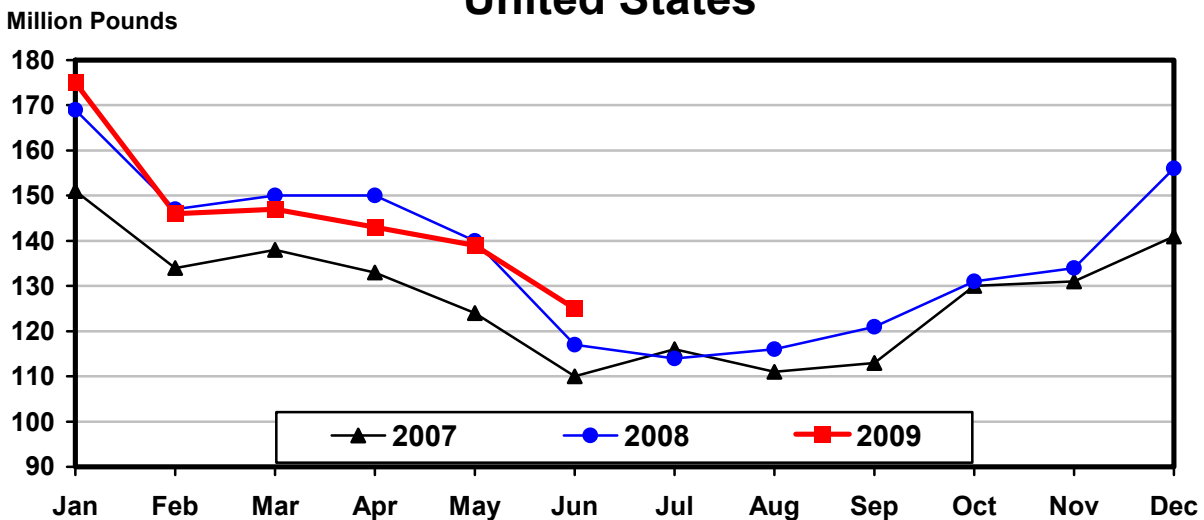
**Butter: Production by State and United States, June 2008-2009**

State	Jun 2008	May <sup>1</sup> 2009	Jun 2009	Change From	
				Jun 2008	May 2009
	<i>1,000 Pounds</i>	<i>1,000 Pounds</i>	<i>1,000 Pounds</i>	<i>Percent</i>	<i>Percent</i>
CA	44,134	43,029	40,075	-9.2	-6.9
PA	5,544	6,514	5,708	3.0	-12.4
WI	21,756	30,001			
Oth Sts <sup>2</sup>	45,279	59,829	79,686		
US	116,713	139,373	125,469	7.5	-10.0
Atlantic	9,004	11,975	11,761	30.6	-1.8
Central	43,316	61,125	53,687	23.9	-12.2
West	64,393	66,273	60,021	-6.8	-9.4

<sup>1</sup> Revised.

<sup>2</sup> States not shown when fewer than 3 plants reported or individual plant operations could be disclosed. Percent change shown only when comparable States are included in the calculation.

## Total Butter Production United States





**Nonfat Dry Milk, Human: Production by State  
and United States, June 2008-2009**

State	Jun 2008	May <sup>1</sup> 2009	Jun 2009	Change From	
				Jun 2008	May 2009
	<i>1,000 Pounds</i>	<i>1,000 Pounds</i>	<i>1,000 Pounds</i>	<i>Percent</i>	<i>Percent</i>
CA	70,019	75,657	71,857	2.6	-5.0
Oth Sts <sup>2</sup>	65,960	73,561	72,714	10.2	-1.2
US	135,979	149,218	144,571	6.3	-3.1
Atlantic	22,452	25,659	22,307	-0.6	-13.1
Central	22,200	18,620	16,828	-24.2	-9.6
West	91,327	104,939	105,436	15.4	0.5

<sup>1</sup> Revised.

<sup>2</sup> States not shown when fewer than 3 plants reported or individual plant operations could be disclosed. Percent change shown only when comparable States are included in the calculation.

**Dry Whey, Human: Production by State  
and United States, June 2008-2009**

State	Jun 2008	May <sup>1</sup> 2009	Jun 2009	Change From	
				Jun 2008	May 2009
	<i>1,000 Pounds</i>	<i>1,000 Pounds</i>	<i>1,000 Pounds</i>	<i>Percent</i>	<i>Percent</i>
NY	11,145	11,674	11,338	1.7	-2.9
WI	26,220	25,805	25,800	-1.6	
Oth Sts <sup>2</sup>	52,039	52,573	50,459	-3.0	-4.0
US	89,404	90,052	87,597	-2.0	-2.7
Atlantic	19,951	21,512	20,663	3.6	-3.9
Central	40,825	41,464	40,989	0.4	-1.1
West	28,628	27,076	25,945	-9.4	-4.2

<sup>1</sup> Revised.

<sup>2</sup> States not shown when fewer than 3 plants reported or individual plant operations could be disclosed. Percent change shown only when comparable States are included in the calculation.

**Ice Cream, Regular, Hard: Production by State and United States,  
June 2008-2009**

State	Jun 2008	May <sup>1</sup> 2009	Jun 2009	Change From	
				Jun 2008	May 2009
	<i>1,000 Gallons</i>	<i>1,000 Gallons</i>	<i>1,000 Gallons</i>	<i>Percent</i>	<i>Percent</i>
CA	15,235	15,034	15,609	2.5	3.8
FL	1,595				
IN	8,310	7,263	8,663	4.2	19.3
MO	1,975	2,747	2,930	48.4	6.7
NY	2,761	3,182	2,619	-5.1	-17.7
NC	1,458	1,412	1,507	3.4	6.7
OH	2,457	2,103	2,623	6.8	24.7
OR	1,494	1,667	1,862	24.6	11.7
PA	3,273	3,128	3,659	11.8	17.0
TN	1,509	913	963	-36.2	5.5
TX	6,420	4,307	5,169	-19.5	20.0
UT	3,039	1,901	2,449	-19.4	28.8
Oth Sts <sup>2</sup>	42,426	36,979	41,525		
US	91,952	80,636	89,578	-2.6	11.1
N Atl	13,634	13,178	13,698	0.5	3.9
S Atl	7,366	5,727	6,470	-12.2	13.0
E N Cen	17,461	16,120	18,287	4.7	13.4
W N Cen	18,666	13,910	16,956	-9.2	21.9
S Cen	11,813	9,684	10,656	-9.8	10.0
West	23,012	22,017	23,511	2.2	6.8

<sup>1</sup> Revised.

<sup>2</sup> States not shown when fewer than 3 plants reported or individual plant operations could be disclosed. Percent change shown only when comparable States are included in the calculation.

**Canned Milk and Dry Milk Products: Manufacturers' Shipments,  
and Stocks, June, 2008-2009**

Product	Jun 2008	May 2009 <sup>1</sup>	Jun 2009	Change From	
				Jun 2008	May 2009
	<i>1,000 Pounds</i>	<i>1,000 Pounds</i>	<i>1,000 Pounds</i>	<i>Percent</i>	<i>Percent</i>
	<b>Manufacturers' Shipments<sup>2</sup></b>				
Nonfat Dry Milk, Human	135,749	135,987	140,264	3.3	3.1
	<i>1,000 Pounds</i>	<i>1,000 Pounds</i>	<i>1,000 Pounds</i>	<i>Percent</i>	<i>Percent</i>
	<b>Manufacturers' Stocks End-of-Month<sup>3</sup></b>				
Canned Evaporated and Condensed Whole Milk	79,756	85,299	95,049	19.2	11.4
Nonfat Dry Milk, Human	137,848	189,514	194,206	40.9	2.5
Dry Buttermilk, Total	9,634	5,317	5,458	-43.3	2.7

<sup>1</sup> Revised.

<sup>2</sup> For dry products, shipments of bulk goods only.

<sup>3</sup> Stocks held by manufacturers at all points and in transit on last day of month.

**Procedures and Reliability:** Estimates included in this report are based on data provided each month by manufacturers of these products. In 32 States, the State Departments of Agriculture assist in collection of data, which eliminates duplicate reporting and reduces respondent burden. Data are collected by mail, personal and telephone interviews following the close of each month. There were 1,116 manufacturers that made one or more products in 2008. Each month, reports are generally received from all dairy plants in States with small numbers of plants. In States with large numbers of plants, survey procedures are designed to obtain monthly reports from all large plants and from a sample of small plants. Monthly estimates are based upon returns from about 70 percent of the plants which account for 70 to 90 percent of the total production of major dairy products.

**Revision Policy:** Monthly estimates are subject to revision the month following the preliminary estimates. Annual estimates are published in late April in the "**Dairy Products Yearly Summary**" report which includes any revisions made to current and previous year. An attempt is made to get information from all plants for preparing these estimates.

### Information Contacts

Listed below are the commodity specialists in the Livestock Branch of the National Agricultural Statistics Service to contact for additional information.

Dan Kerestes, Chief, Livestock Branch ..... (202) 720-3570

Livestock Section

- Scott Hollis, Head, Livestock Section ..... (202) 690-2424
- Jim Collom - Dairy Products ..... (202) 690-3236
- Joe Gaynor - Dairy Products Prices ..... (202) 690-2168
- Jason Hardegree - Cattle, Cattle on Feed ..... (202) 720-3040
- Sherry Bertramsen - Livestock Slaughter ..... (515) 284-4340
- Everett Olbert - Sheep and Goats ..... (202) 720-4751
- Mike Miller - Milk Production and Milk Cows ..... (202) 720-3278
- Nick Streff - Hogs and Pigs ..... (202) 720-3106

## ACCESS TO REPORTS!!

---

For your convenience, there are several ways to obtain NASS reports, data products, and services:

### INTERNET ACCESS

All NASS reports are available free of charge. For free access, connect to the Internet and go to the NASS Home Page at: **www.nass.usda.gov**.

### E-MAIL SUBSCRIPTION

All NASS reports are available by subscription free of charge direct to your e-mail address. Starting with the NASS Home Page at **www.nass.usda.gov**, under the right navigation, *Receive reports by Email*, click on **National** or **State**. Follow the instructions on the screen.

-----

### PRINTED REPORTS OR DATA PRODUCTS

**CALL OUR TOLL-FREE ORDER DESK: 800-999-6779 (U.S. and Canada)**  
**Other areas, please call 703-605-6220      FAX: 703-605-6900**  
**(Visa, MasterCard, check, or money order acceptable for payment.)**

-----

### ASSISTANCE

For **assistance** with general agricultural statistics or further information about NASS or its products or services, contact the **Agricultural Statistics Hotline** at **800-727-9540**, 7:30 a.m. to 4:00 p.m. ET, or e-mail: **nass@nass.usda.gov**.

The U.S. Department of Agriculture (USDA) prohibits discrimination in all its programs and activities on the basis of race, color, national origin, age, disability, and where applicable, sex, marital status, familial status, parental status, religion, sexual orientation, genetic information, political beliefs, reprisal, or because all or a part of an individual's income is derived from any public assistance program. (Not all prohibited bases apply to all programs.) Persons with disabilities who require alternative means for communication of program information (Braille, large print, audiotape, etc.) should contact USDA's TARGET Center at (202) 720-2600 (voice and TDD).

To file a complaint of discrimination, write to USDA, Director, Office of Civil Rights, 1400 Independence Avenue, S.W., Washington, D.C. 20250-9410, or call (800) 795-3272 (voice) or (202) 720-6382 (TDD). USDA is an equal opportunity provider and employer.