
Released September 4, 2009, by the National Agricultural Statistics Service (NASS), Agricultural Statistics Board, U.S. Department of Agriculture. For information on *Dairy Products* call Jim Collom at (202) 690-3236, office hours 7:00 a.m. to 3:30 p.m. ET.

July 2009 Highlights

Total cheese output (excluding cottage cheese) was 839 million pounds, 2.0 percent above July 2008 and 0.6 percent above June 2009.

Italian type cheese production totaled 348 million pounds, 3.1 percent above July 2008 and 1.0 percent above June 2009.

American type cheese production totaled 352 million pounds, 3.0 percent above July 2008 but 0.3 percent below June 2009.

Butter production was 112 million pounds, 2.2 percent below July 2008 and 11.0 percent below June 2009.

Dry Milk Powders: (comparisons with July 2008)

Nonfat dry milk, human --- 132 million pounds, down 2.0 percent.

Skim milk powders --- 14.0 million pounds, down 48.3 percent.

Whey products: (comparisons with July 2008)

Dry whey, total --- 93.3 million pounds, up 2.0 percent.

Lactose, human and animal --- 60.9 million pounds, down 6.6 percent.

Whey protein concentrate, total --- 34.9 million pounds, down 5.1 percent.

Frozen products: (comparisons with July 2008)

Ice cream, Regular (hard) --- 85.9 million gallons, up 1.4 percent.

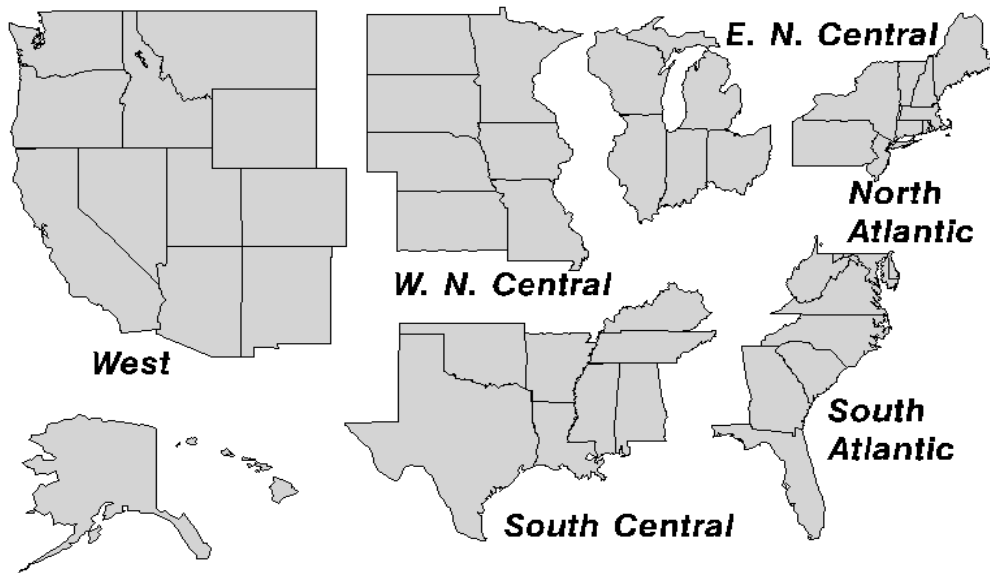
Ice cream, Lowfat (total) --- 39.7 million gallons, up 2.2 percent.

Sherbet (hard) --- 5.17 million gallons, down slightly.

Frozen Yogurt (total) --- 7.16 million gallons, up 2.6 percent.

U. S. Geographic Regions Dairy Products

If a region is unable to be published for confidentiality reasons, it will be combined with other regions when possible. For example, if North Atlantic can not be published, it will be combined with South Atlantic to publish Atlantic. The West North Central and East North Central will be combined, if necessary, to form North Central. In the event that neither could be published, they may be combined with South Central to publish Central. Some tables will have only limited regions shown, therefore the regions may not add to the United States total.



Contents

	Page
Dairy Products: Production by Product, United States	1
Whey and Modified Whey Products: Production, Stocks, and Prices, United States	2
Dairy Products: Production by Product and Month, United States	3
Select Commodities by State and United States	10
Canned Milk and Dry Milk Products: Manufacturers' Shipments and Stocks	15
Procedures and Reliability	16
Information Contacts	16

**Dairy Products: Production by Product,
United States, July, 2008-2009**

Product	Jul 2008	Jun 2009 ¹	Jul 2009	Change From	
				Jul 2008	Jun 2009
	<i>1,000 Pounds</i>	<i>1,000 Pounds</i>	<i>1,000 Pounds</i>	<i>Percent</i>	<i>Percent</i>
Butter	114,185	125,497	111,630	-2.2	-11.0
Cheese					
American Types ²	341,914	353,396	352,234	3.0	-0.3
Cheddar	265,249	272,996	267,141	0.7	-2.1
Other American	76,665	80,400	85,093	11.0	5.8
Swiss	26,093	27,237	27,165	4.1	-0.3
Brick and Muenster	12,079	10,480	12,026	-0.4	14.8
Cream and Neufchatel	62,970	58,119	60,963	-3.2	4.9
Hispanic	16,063	16,214	16,569	3.2	2.2
Italian Types	337,254	344,448	347,866	3.1	1.0
Mozzarella	261,510	269,830	273,564	4.6	1.4
Other Italian	75,744	74,618	74,302	-1.9	-0.4
All Other Types	25,809	24,283	22,167	-14.1	-8.7
Total Cheese	822,182	834,177	838,990	2.0	0.6
Cottage Cheese, Curd ³	36,575	38,655	40,759	11.4	5.4
Cottage Cheese, Cream ⁴	28,930	30,581	31,733	9.7	3.8
Cottage Cheese, Lowfat ⁵	33,416	33,241	35,028	4.8	5.4
Canned Evaporated and Condensed Whole Milk	52,005	49,903	50,137	-3.6	0.5
Dry Whole Milk	5,050	3,493	4,683	-7.3	34.1
Nonfat Dry Milk, Human	134,875	144,141	132,159	-2.0	-8.3
Skim Milk Powders ⁶	27,120	16,796	14,023	-48.3	-16.5
Dry Skim Milk, Animal	727	980	800	10.0	-18.4
Dry Buttermilk	5,429	6,224	5,739	5.7	-7.8
Sour Cream	91,042	95,144	93,361	2.5	-1.9
Yogurt, Plain & Flavored	287,147	334,486	303,844	5.8	-9.2
	<i>1,000 Gallons</i>	<i>1,000 Gallons</i>	<i>1,000 Gallons</i>	<i>Percent</i>	<i>Percent</i>
Frozen Products					
Ice Cream, Regular, Hard	84,717	89,918	85,903	1.4	-4.5
Ice Cream, Lowfat, Hard	12,863	15,163	12,623	-1.9	-16.8
Ice Cream, Lowfat, Soft	25,990	27,077	27,103	4.3	0.1
Ice Cream, Lowfat, Total	38,853	42,240	39,726	2.2	-6.0
Ice Cream, Nonfat, Hard	997	1,488	1,438	44.2	-3.4
Sherbet, Hard	5,189	5,517	5,172	-0.3	-6.3
Water and Juice Ices	6,530	7,071	6,273	-3.9	-11.3
Frozen Yogurt, Total	6,977	6,744	7,156	2.6	6.1
Regular & Lowfat, Hard	2,007	1,788	1,700	-15.3	-4.9
Nonfat, Hard	744	842	804	8.1	-4.5
Other Frozen Dairy Products	1,444	1,526	1,194	-17.3	-21.8
Mix for Frozen Products					
Ice Cream Mix	47,652	49,830	47,188	-1.0	-5.3
Ice Cream, Lowfat, Mix	22,856	24,194	22,873	0.1	-5.5
Ice Cream, Nonfat, Mix	638	882	927	45.3	5.1
Sherbet Mix	3,432	3,561	3,317	-3.4	-6.9
Yogurt Mix	4,361	4,087	4,337	-0.6	6.1

¹ Revised.

² Includes Cheddar, Colby, Monterey, and Jack.

³ Mostly used for processing into cream or lowfat cottage cheese.

⁴ Fat content 4 percent or more.

⁵ Fat content less than 4 percent.

⁶ Includes protein standardized and blends.

⁷ Dry milk protein concentrate 40-89.9 percent protein.

**Whey and Modified Whey Products: Production, Stocks,
and Prices, United States, July, 2008-2009**

Product	Jul 2008	Jun 2009 ¹	Jul 2009	Change From	
				Jul 2008	Jun 2009
	Production				
	<i>1,000 Pounds</i>	<i>1,000 Pounds</i>	<i>1,000 Pounds</i>	<i>Percent</i>	<i>Percent</i>
Condensed Whey, Solids Content ²					
Sweet-Type, Human	9,111	7,422	7,583	-16.8	2.2
Dry Whey Products					
Dry Whey, Human	87,780	88,952	89,614	2.1	0.7
Dry Whey, Animal	3,732	4,375	3,689	-1.2	-15.7
Dry Whey, Total	91,512	93,327	93,303	2.0	
Reduced Lactose and Minerals					
Human Food	3,349	3,144	3,047	-9.0	-3.1
Animal Feed	3,970	3,981	4,075	2.6	2.4
Lactose, Human and Animal	65,229	60,090	60,932	-6.6	1.4
Whey					
Protein Concentrate					
Human ³	33,658	31,058	31,924	-5.2	2.8
Animal ³	3,129	2,774	2,987	-4.5	7.7
Total ³	36,787	33,832	34,911	-5.1	3.2
25.0-49.9 Percent ⁴	26,023	22,130	22,874	-12.1	3.4
50.0-89.9 Percent ⁴	10,764	11,702	12,037	11.8	2.9
Protein Isolates ⁵	3,289	4,587	4,464	35.7	-2.7
	Manufacturers' Stocks End-of-Month ⁶				
	<i>1,000 Pounds</i>	<i>1,000 Pounds</i>	<i>1,000 Pounds</i>	<i>Percent</i>	<i>Percent</i>
Dry Whey Products					
Dry Whey, Human	54,572	45,315	46,132	-15.5	1.8
Dry Whey, Animal	5,954	1,588	1,738	-70.8	9.4
Dry Whey, Total	60,526	46,903	47,870	-20.9	2.1
Reduced Lactose and Minerals					
Human and Animal ⁷	16,548	14,479	14,582	-11.9	0.7
Lactose, Human and Animal	90,408	65,406	60,163	-33.5	-8.0
Whey					
Protein Concentrate					
Human ³	44,287	34,403	34,220	-22.7	-0.5
Animal ³	954	2,354	2,185	129.0	-7.2
Total ³	45,241	36,757	36,405	-19.5	-1.0
25.0-49.9 Percent ⁴	30,855	22,440	22,321	-27.7	-0.5
50.0-89.9 Percent ⁴	14,386	14,317	14,084	-2.1	-1.6
	Manufacturers' Selling Price ⁸				
	<i>Cents per Pound</i>	<i>Cents per Pound</i>	<i>Cents per Pound</i>	<i>Cents Change</i>	<i>Cents Change</i>
Dry Whey, Animal	18.8	25.3	25.9	7.1	0.6

¹ Revised.

² Final marketable product only. Does not include quantity used or shipped to another plant for further processing into dry whey or modified whey products. Does not include sweet-type, animal whey.

³ Whey Protein Concentrate, 25.0 to 89.9 percent.

⁴ Whey Protein Concentrate, Human and Animal.

⁵ Whey Protein Isolate, 90.0 percent or greater.

⁶ Stocks held by manufacturers at all points and in transit.

⁷ Reduced lactose and minerals stocks combined to avoid disclosure of individual operations.

⁸ Prices for bulk goods, f.o.b. plant. Average monthly prices reported by firms.

**Dairy Products: Production by Product and Month,
United States, 2008-2009¹**

Product and Month	By Month			Cumulative		
	2008	2009	Change From 2008	2008	2009	Change From 2008
	<i>1,000 Pounds</i>	<i>1,000 Pounds</i>	<i>Percent</i>	<i>1,000 Pounds</i>	<i>1,000 Pounds</i>	<i>Percent</i>
Total Cheese						
Jan	821,181	823,961	0.3	821,181	823,961	0.3
Feb	792,408	769,821	-2.9	1,613,589	1,593,782	-1.2
Mar	843,830	870,828	3.2	2,457,419	2,464,610	0.3
Apr	820,401	845,270	3.0	3,277,820	3,309,880	1.0
May	838,551	859,675	2.5	4,116,371	4,169,555	1.3
Jun	816,225	834,177	2.2	4,932,596	5,003,732	1.4
Jul	822,182	838,990	2.0	5,754,778	5,842,722	1.5
Aug	828,318			6,583,096		
Sep	809,580			7,392,676		
Oct	850,203			8,242,879		
Nov	828,591			9,071,470		
Dec	863,060			9,934,530		
American Cheese						
Jan	336,700	353,224	4.9	336,700	353,224	4.9
Feb	321,479	320,751	-0.2	658,179	673,975	2.4
Mar	340,830	359,029	5.3	999,009	1,033,004	3.4
Apr	340,115	351,162	3.2	1,339,124	1,384,166	3.4
May	352,587	366,464	3.9	1,691,711	1,750,630	3.5
Jun	336,745	353,396	4.9	2,028,456	2,104,026	3.7
Jul	341,914	352,234	3.0	2,370,370	2,456,260	3.6
Aug	339,841			2,710,211		
Sep	320,793			3,031,004		
Oct	343,192			3,374,196		
Nov	338,220			3,712,416		
Dec	358,878			4,071,294		
Cheddar Cheese						
Jan	264,585	274,091	3.6	264,585	274,091	3.6
Feb	253,176	241,474	-4.6	517,761	515,565	-0.4
Mar	268,179	273,581	2.0	785,940	789,146	0.4
Apr	270,445	268,897	-0.6	1,056,385	1,058,043	0.2
May	274,765	285,473	3.9	1,331,150	1,343,516	0.9
Jun	260,962	272,996	4.6	1,592,112	1,616,512	1.5
Jul	265,249	267,141	0.7	1,857,361	1,883,653	1.4
Aug	257,249			2,114,610		
Sep	238,336			2,352,946		
Oct	255,411			2,608,357		
Nov	257,466			2,865,823		
Dec	283,307			3,149,130		

See footnote(s) at end of table.

--continued

**Dairy Products: Production by Product and Month,
United States, 2008-2009¹ (continued)**

Product and Month	By Month			Cumulative		
	2008	2009	Change From 2008	2008	2009	Change From 2008
	<i>1,000 Pounds</i>	<i>1,000 Pounds</i>	<i>Percent</i>	<i>1,000 Pounds</i>	<i>1,000 Pounds</i>	<i>Percent</i>
Italian Cheese						
Jan	355,109	347,897	-2.0	355,109	347,897	-2.0
Feb	339,375	319,870	-5.7	694,484	667,767	-3.8
Mar	363,145	362,867	-0.1	1,057,629	1,030,634	-2.6
Apr	349,049	350,267	0.3	1,406,678	1,380,901	-1.8
May	349,033	349,963	0.3	1,755,711	1,730,864	-1.4
Jun	336,646	344,448	2.3	2,092,357	2,075,312	-0.8
Jul	337,254	347,866	3.1	2,429,611	2,423,178	-0.3
Aug	336,569			2,766,180		
Sep	339,473			3,105,653		
Oct	348,051			3,453,704		
Nov	340,383			3,794,087		
Dec	363,941			4,158,028		
Mozzarella						
Jan	282,325	268,056	-5.1	282,325	268,056	-5.1
Feb	267,174	247,418	-7.4	549,499	515,474	-6.2
Mar	288,152	281,087	-2.5	837,651	796,561	-4.9
Apr	275,693	272,270	-1.2	1,113,344	1,068,831	-4.0
May	273,126	273,405	0.1	1,386,470	1,342,236	-3.2
Jun	262,443	269,830	2.8	1,648,913	1,612,066	-2.2
Jul	261,510	273,564	4.6	1,910,423	1,885,630	-1.3
Aug	260,268			2,170,691		
Sep	260,972			2,431,663		
Oct	266,114			2,697,777		
Nov	261,641			2,959,418		
Dec	279,973			3,239,391		
Other Italian						
Jan	72,784	79,841	9.7	72,784	79,841	9.7
Feb	72,201	72,452	0.3	144,985	152,293	5.0
Mar	74,993	81,780	9.1	219,978	234,073	6.4
Apr	73,356	77,997	6.3	293,334	312,070	6.4
May	75,907	76,558	0.9	369,241	388,628	5.3
Jun	74,203	74,618	0.6	443,444	463,246	4.5
Jul	75,744	74,302	-1.9	519,188	537,548	3.5
Aug	76,301			595,489		
Sep	78,501			673,990		
Oct	81,937			755,927		
Nov	78,742			834,669		
Dec	83,968			918,637		

See footnote(s) at end of table.

--continued

**Dairy Products: Production by Product and Month,
United States, 2008-2009 ¹ (continued)**

Product and Month	By Month			Cumulative		
	2008	2009	Change From 2008	2008	2009	Change From 2008
	<i>1,000 Pounds</i>	<i>1,000 Pounds</i>	<i>Percent</i>	<i>1,000 Pounds</i>	<i>1,000 Pounds</i>	<i>Percent</i>
Butter						
Jan	169,218	174,684	3.2	169,218	174,684	3.2
Feb	146,737	145,687	-0.7	315,955	320,371	1.4
Mar	149,851	147,245	-1.7	465,806	467,616	0.4
Apr	149,984	142,509	-5.0	615,790	610,125	-0.9
May	139,858	139,373	-0.3	755,648	749,498	-0.8
Jun	116,713	125,497	7.5	872,361	874,995	0.3
Jul	114,185	111,630	-2.2	986,546	986,625	
Aug	115,939			1,102,485		
Sep	121,035			1,223,520		
Oct	130,633			1,354,153		
Nov	133,586			1,487,739		
Dec	156,339			1,644,078		
Nonfat Dry Milk, Human						
Jan	112,970	154,812	37.0	112,970	154,812	37.0
Feb	121,107	122,812	1.4	234,077	277,624	18.6
Mar	136,993	135,277	-1.3	371,070	412,901	11.3
Apr	134,861	138,529	2.7	505,931	551,430	9.0
May	131,607	149,218	13.4	637,538	700,648	9.9
Jun	135,979	144,141	6.0	773,517	844,789	9.2
Jul	134,875	132,159	-2.0	908,392	976,948	7.5
Aug	115,205			1,023,597		
Sep	85,541			1,109,138		
Oct	121,071			1,230,209		
Nov	133,702			1,363,911		
Dec	155,262			1,519,173		
Skim Milk Powders ²						
Jan	45,614	17,663	-61.3	45,614	17,663	-61.3
Feb	33,804	22,693	-32.9	79,418	40,356	-49.2
Mar	34,428	24,432	-29.0	113,846	64,788	-43.1
Apr	36,137	24,645	-31.8	149,983	89,433	-40.4
May	45,511	26,731	-41.3	195,494	116,164	-40.6
Jun	33,873	16,796	-50.4	229,367	132,960	-42.0
Jul	27,120	14,023	-48.3	256,487	146,983	-42.7
Aug	26,649			283,136		
Sep	38,868			322,004		
Oct	17,556			339,560		
Nov	16,477			356,037		
Dec	17,793			373,830		

See footnote(s) at end of table.

--continued

**Dairy Products: Production by Product and Month,
United States, 2008-2009¹ (continued)**

Product and Month	By Month			Cumulative		
	2008	2009	Change From 2008	2008	2009	Change From 2008
	<i>1,000 Pounds</i>	<i>1,000 Pounds</i>	<i>Percent</i>	<i>1,000 Pounds</i>	<i>1,000 Pounds</i>	<i>Percent</i>
Dry Whey, Total ³						
Jan	93,939	88,464	-5.8	93,939	88,464	-5.8
Feb	89,200	82,869	-7.1	183,139	171,333	-6.4
Mar	99,767	92,213	-7.6	282,906	263,546	-6.8
Apr	98,668	92,690	-6.1	381,574	356,236	-6.6
May	99,025	93,861	-5.2	480,599	450,097	-6.3
Jun	95,045	93,327	-1.8	575,644	543,424	-5.6
Jul	91,512	93,303	2.0	667,156	636,727	-4.6
Aug	89,253			756,409		
Sep	85,891			842,300		
Oct	87,708			930,008		
Nov	86,416			1,016,424		
Dec	91,115			1,107,539		
Lactose, Human and Animal						
Jan	62,275	59,807	-4.0	62,275	59,807	-4.0
Feb	60,504	51,610	-14.7	122,779	111,417	-9.3
Mar	64,289	59,224	-7.9	187,068	170,641	-8.8
Apr	63,817	58,491	-8.3	250,885	229,132	-8.7
May	65,588	59,991	-8.5	316,473	289,123	-8.6
Jun	63,383	60,090	-5.2	379,856	349,213	-8.1
Jul	65,229	60,932	-6.6	445,085	410,145	-7.9
Aug	63,488			508,573		
Sep	58,834			567,407		
Oct	60,005			627,412		
Nov	57,454			684,866		
Dec	60,429			745,295		
Whey Protein Concentrate, Total						
Jan	35,241	34,185	-3.0	35,241	34,185	-3.0
Feb	33,598	31,243	-7.0	68,839	65,428	-5.0
Mar	36,552	33,840	-7.4	105,391	99,268	-5.8
Apr	36,286	31,888	-12.1	141,677	131,156	-7.4
May	37,046	34,781	-6.1	178,723	165,937	-7.2
Jun	34,571	33,832	-2.1	213,294	199,769	-6.3
Jul	36,787	34,911	-5.1	250,081	234,680	-6.2
Aug	34,822			284,903		
Sep	33,081			317,984		
Oct	35,830			353,814		
Nov	33,805			387,619		
Dec	36,028			423,647		

See footnote(s) at end of table.

--continued

**Dairy Products: Production by Product and Month,
United States, 2008-2009 ¹ (continued)**

Product and Month	By Month			Cumulative		
	2008	2009	Change From 2008	2008	2009	Change From 2008
	<i>1,000 Pounds</i>	<i>1,000 Pounds</i>	<i>Percent</i>	<i>1,000 Pounds</i>	<i>1,000 Pounds</i>	<i>Percent</i>
Cream Cottage Cheese						
Jan	26,831	26,400	-1.6	26,831	26,400	-1.6
Feb	25,187	26,713	6.1	52,018	53,113	2.1
Mar	27,822	30,807	10.7	79,840	83,920	5.1
Apr	26,229	31,287	19.3	106,069	115,207	8.6
May	28,849	31,721	10.0	134,918	146,928	8.9
Jun	27,000	30,581	13.3	161,918	177,509	9.6
Jul	28,930	31,733	9.7	190,848	209,242	9.6
Aug	29,119			219,967		
Sep	28,487			248,454		
Oct	27,480			275,934		
Nov	24,163			300,097		
Dec	25,724			325,821		
Lowfat Cottage Cheese						
Jan	33,057	30,915	-6.5	33,057	30,915	-6.5
Feb	31,451	30,933	-1.6	64,508	61,848	-4.1
Mar	32,973	34,563	4.8	97,481	96,411	-1.1
Apr	33,773	34,652	2.6	131,254	131,063	-0.1
May	35,483	32,932	-7.2	166,737	163,995	-1.6
Jun	32,074	33,241	3.6	198,811	197,236	-0.8
Jul	33,416	35,028	4.8	232,227	232,264	
Aug	33,587			265,814		
Sep	34,019			299,833		
Oct	32,767			332,600		
Nov	27,098			359,698		
Dec	29,935			389,633		
Sour Cream						
Jan	92,190	86,957	-5.7	92,190	86,957	-5.7
Feb	81,494	81,338	-0.2	173,684	168,295	-3.1
Mar	93,193	97,476	4.6	266,877	265,771	-0.4
Apr	84,041	92,823	10.4	350,918	358,594	2.2
May	97,322	94,799	-2.6	448,240	453,393	1.1
Jun	90,846	95,144	4.7	539,086	548,537	1.8
Jul	91,042	93,361	2.5	630,128	641,898	1.9
Aug	94,794			724,922		
Sep	88,541			813,463		
Oct	102,046			915,509		
Nov	105,245			1,020,754		
Dec	106,325			1,127,079		

See footnote(s) at end of table.

--continued

**Dairy Products: Production by Product and Month,
United States, 2008-2009¹ (continued)**

Product and Month	By Month			Cumulative		
	2008	2009	Change From 2008	2008	2009	Change From 2008
	<i>1,000 Gallons</i>	<i>1,000 Gallons</i>	<i>Percent</i>	<i>1,000 Gallons</i>	<i>1,000 Gallons</i>	<i>Percent</i>
Ice Cream, Regular, Hard						
Jan	62,898	57,527	-8.5	62,898	57,527	-8.5
Feb	66,569	63,608	-4.4	129,467	121,135	-6.4
Mar	75,908	76,124	0.3	205,375	197,259	-4.0
Apr	77,122	79,517	3.1	282,497	276,776	-2.0
May	81,171	80,636	-0.7	363,668	357,412	-1.7
Jun	91,952	89,918	-2.2	455,620	447,330	-1.8
Jul	84,717	85,903	1.4	540,337	533,233	-1.3
Aug	78,790			619,127		
Sep	75,864			694,991		
Oct	70,723			765,714		
Nov	61,466			827,180		
Dec	53,734			880,914		
Ice Cream, Lowfat, Total						
Jan	25,673	23,788	-7.3	25,673	23,788	-7.3
Feb	27,723	26,518	-4.3	53,396	50,306	-5.8
Mar	32,192	35,860	11.4	85,588	86,166	0.7
Apr	36,386	35,182	-3.3	121,974	121,348	-0.5
May	37,585	36,512	-2.9	159,559	157,860	-1.1
Jun	41,838	42,240	1.0	201,397	200,100	-0.6
Jul	38,853	39,726	2.2	240,250	239,826	-0.2
Aug	36,122			276,372		
Sep	29,976			306,348		
Oct	27,291			333,639		
Nov	21,789			355,428		
Dec	21,794			377,222		
Sherbet, Hard						
Jan	3,935	3,552	-9.7	3,935	3,552	-9.7
Feb	4,060	3,980	-2.0	7,995	7,532	-5.8
Mar	5,358	5,090	-5.0	13,353	12,622	-5.5
Apr	5,536	5,106	-7.8	18,889	17,728	-6.1
May	5,448	4,989	-8.4	24,337	22,717	-6.7
Jun	5,546	5,517	-0.5	29,883	28,234	-5.5
Jul	5,189	5,172	-0.3	35,072	33,406	-4.8
Aug	4,523			39,595		
Sep	4,646			44,241		
Oct	4,176			48,417		
Nov	3,424			51,841		
Dec	3,442			55,283		

See footnote(s) at end of table.

--continued

**Dairy Products: Production by Product and Month,
United States, 2008-2009 ¹ (continued)**

Product and Month	By Month			Cumulative		
	2008	2009	Change From 2008	2008	2009	Change From 2008
	<i>1,000 Pounds</i>	<i>1,000 Pounds</i>	<i>Percent</i>	<i>1,000 Pounds</i>	<i>1,000 Pounds</i>	<i>Percent</i>
Yogurt, Plain & Flavored						
Jan	301,753	306,406	1.5	301,753	306,406	1.5
Feb	303,873	313,949	3.3	605,626	620,355	2.4
Mar	330,037	365,333	10.7	935,663	985,688	5.3
Apr	301,550	323,716	7.4	1,237,213	1,309,404	5.8
May	309,007	325,561	5.4	1,546,220	1,634,965	5.7
Jun	297,939	334,486	12.3	1,844,159	1,969,451	6.8
Jul	287,147	303,844	5.8	2,131,306	2,273,295	6.7
Aug	304,917			2,436,223		
Sep	331,046			2,767,269		
Oct	301,458			3,068,727		
Nov	243,349			3,312,076		
Dec	287,183			3,599,259		
	<i>1,000 Gallons</i>	<i>1,000 Gallons</i>	<i>Percent</i>	<i>1,000 Gallons</i>	<i>1,000 Gallons</i>	<i>Percent</i>
Yogurt, Frozen						
Jan	5,419	3,430	-36.7	5,419	3,430	-36.7
Feb	5,716	4,752	-16.9	11,135	8,182	-26.5
Mar	7,237	6,161	-14.9	18,372	14,343	-21.9
Apr	7,400	6,077	-17.9	25,772	20,420	-20.8
May	7,576	5,966	-21.3	33,348	26,386	-20.9
Jun	7,493	6,744	-10.0	40,841	33,130	-18.9
Jul	6,977	7,156	2.6	47,818	40,286	-15.8
Aug	6,359			54,177		
Sep	5,782			59,959		
Oct	5,359			65,318		
Nov	4,431			69,749		
Dec	4,393			74,142		

¹ June 2009 data revised.

² Includes protein standardized and blends.

³ Excludes all modified dry whey products.

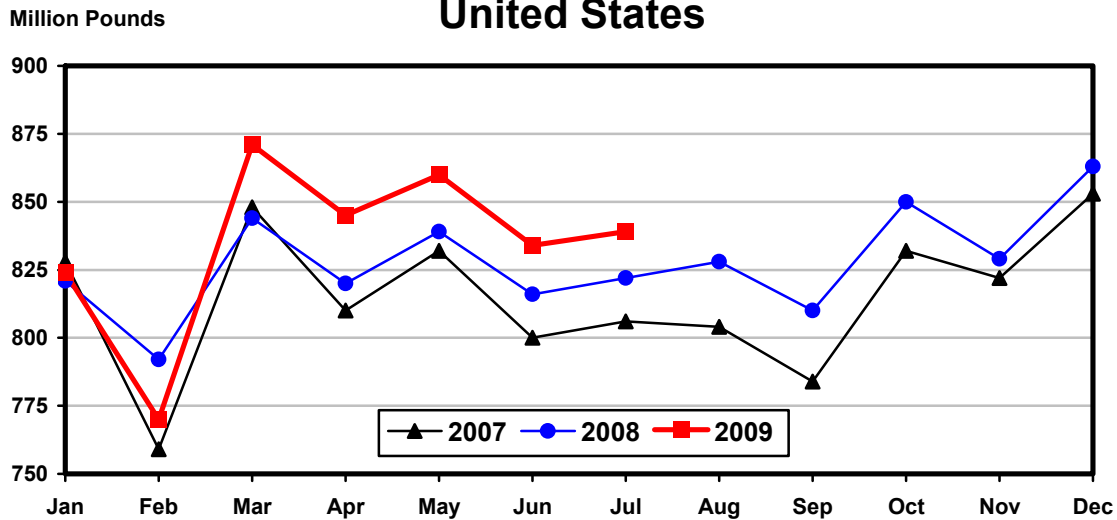
Total Cheese, Excluding Cottage Cheese: Production by State and United States, July 2008-2009

State	Jul 2008	Jun ¹ 2009	Jul 2009	Change From	
				Jul 2008	Jun 2009
	<i>1,000 Pounds</i>	<i>1,000 Pounds</i>	<i>1,000 Pounds</i>	<i>Percent</i>	<i>Percent</i>
CA	172,773	165,386	165,002	-4.5	-0.2
ID	66,395	66,532	66,518	0.2	
IL	5,739	6,256	6,823	18.9	9.1
IA	13,859	19,112	18,408	32.8	-3.7
MN	53,339	53,770	55,527	4.1	3.3
NJ	2,708	2,295	2,626	-3.0	14.4
NM	48,048	49,870	49,861	3.8	
NY	56,420	57,616	60,232	6.8	4.5
OH	14,478	16,972	17,084	18.0	0.7
PA	34,461	34,675	34,070	-1.1	-1.7
SD	18,587	19,745	19,784	6.4	0.2
UT	10,294	8,892	8,861	-13.9	-0.3
VT	12,881	9,745	11,068	-14.1	13.6
WI	208,858	218,107	218,857	4.8	0.3
Oth Sts ²	103,342	105,204	104,269	0.9	-0.9
US	822,182	834,177	838,990	2.0	0.6
Atlantic	113,400	110,994	115,597	1.9	4.1
Central	361,947	384,725	385,145	6.4	0.1
West	346,835	338,458	338,248	-2.5	-0.1

¹ Revised.

² States not shown when fewer than 3 plants reported or individual plant operations could be disclosed. Percent change shown only when comparable States are included in the calculation.

**Total Cheese Production
United States**



American Cheese: Production by State and United States, July 2008-2009

State	Jul 2008	Jun ¹ 2009	Jul 2009	Change From	
				Jul 2008	Jun 2009
	<i>1,000 Pounds</i>	<i>1,000 Pounds</i>	<i>1,000 Pounds</i>	<i>Percent</i>	<i>Percent</i>
CA	56,500	55,209	52,078	-7.8	-5.7
ID	51,438	53,817	54,586	6.1	1.4
IA	11,472	15,011	14,713	28.3	-2.0
OH	819	1,519	1,325	61.8	-12.8
OR	14,532	14,403	15,124	4.1	5.0
WI	67,559	70,829	71,000	5.1	0.2
Oth Sts ²	139,594	142,608	143,408	2.7	0.6
US	341,914	353,396	352,234	3.0	-0.3
Atlantic	12,054	11,856	12,569	4.3	6.0
Central	156,001	169,230	169,534	8.7	0.2
West	173,859	172,310	170,131	-2.1	-1.3

¹ Revised.

² States not shown when fewer than 3 plants reported or individual plant operations could be disclosed. Percent change shown only when comparable States are included in the calculation.

Cheddar Cheese: Production by State and United States, July 2008-2009

State	Jul 2008	Jun ¹ 2009	Jul 2009	Change From	
				Jul 2008	Jun 2009
	<i>1,000 Pounds</i>	<i>1,000 Pounds</i>	<i>1,000 Pounds</i>	<i>Percent</i>	<i>Percent</i>
CA	33,712	33,583	30,061	-10.8	-10.5
ID	41,044	44,556	45,339	10.5	1.8
IA	8,524	10,360	9,339	9.6	-9.9
MN	42,190	42,777	43,785	3.8	2.4
OH	588	1,262	1,043	77.4	-17.4
WI	52,486	54,786	53,900	2.7	-1.6
Oth Sts ²	86,705	85,672	83,674	-3.5	-2.3
US	265,249	272,996	267,141	0.7	-2.1
Atlantic	11,717	11,551	12,252	4.6	6.1
Central	126,300	133,991	131,759	4.3	-1.7
West	127,232	127,454	123,130	-3.2	-3.4

¹ Revised.

² States not shown when fewer than 3 plants reported or individual plant operations could be disclosed. Percent change shown only when comparable States are included in the calculation.

**Italian Cheese, Total: Production by State and
United States, July 2008-2009**

State	Jul 2008	Jun ¹ 2009	Jul 2009	Change From	
				Jul 2008	Jun 2009
	<i>1,000 Pounds</i>	<i>1,000 Pounds</i>	<i>1,000 Pounds</i>	<i>Percent</i>	<i>Percent</i>
CA	97,750	95,352	97,698	-0.1	2.5
NY	29,733	30,892	33,172	11.6	7.4
PA	20,980	22,752	21,394	2.0	-6.0
WI	96,382	104,330	104,478	8.4	0.1
Oth Sts ²	92,409	91,122	91,124	-1.4	
US	337,254	344,448	347,866	3.1	1.0
Atlantic	63,174	62,905	65,130	3.1	3.5
Central	131,678	141,427	141,318	7.3	-0.1
West	142,402	140,116	141,418	-0.7	0.9

¹ Revised.

² States not shown when fewer than 3 plants reported or individual plant operations could be disclosed. Percent change shown only when comparable States are included in the calculation.

Mozzarella Cheese: Production by State and United States, July 2008-2009

State	Jul 2008	Jun ¹ 2009	Jul 2009	Change From	
				Jul 2008	Jun 2009
	<i>1,000 Pounds</i>	<i>1,000 Pounds</i>	<i>1,000 Pounds</i>	<i>Percent</i>	<i>Percent</i>
CA	88,240	85,779	88,419	0.2	3.1
NY	15,980	17,478	18,996	18.9	8.7
WI	66,483	74,100	75,200	13.1	1.5
Oth Sts ²	90,807	92,473	90,949	0.2	-1.6
US	261,510	269,830	273,564	4.6	1.4
Atlantic	41,150	42,865	43,838	6.5	2.3
Central	90,227	99,236	100,280	11.1	1.1
West	130,133	127,729	129,446	-0.5	1.3

¹ Revised.

² States not shown when fewer than 3 plants reported or individual plant operations could be disclosed. Percent change shown only when comparable States are included in the calculation.

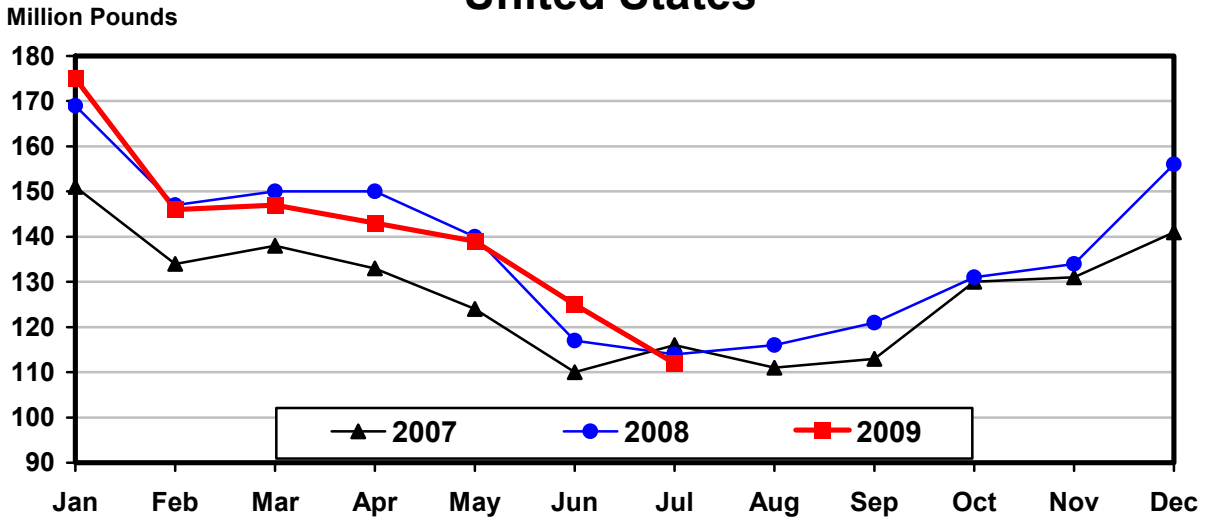
Butter: Production by State and United States, July 2008-2009

State	Jul 2008	Jun ¹ 2009	Jul 2009	Change From	
				Jul 2008	Jun 2009
	<i>1,000 Pounds</i>	<i>1,000 Pounds</i>	<i>1,000 Pounds</i>	<i>Percent</i>	<i>Percent</i>
CA	41,960	40,075	37,597	-10.4	-6.2
PA	5,680	5,708	6,139	8.1	7.6
WI	23,907				
Oth Sts ²	42,638	79,714	67,894		
US	114,185	125,497	111,630	-2.2	-11.0
Atlantic	8,262	11,761	9,257	12.0	-21.3
Central	44,251	53,715	44,165	-0.2	-17.8
West	61,672	60,021	58,208	-5.6	-3.0

¹ Revised.

² States not shown when fewer than 3 plants reported or individual plant operations could be disclosed. Percent change shown only when comparable States are included in the calculation.

Total Butter Production United States



**Nonfat Dry Milk, Human: Production by State
and United States, July 2008-2009**

State	Jul 2008	Jun ¹ 2009	Jul 2009	Change From	
				Jul 2008	Jun 2009
	<i>1,000 Pounds</i>	<i>1,000 Pounds</i>	<i>1,000 Pounds</i>	<i>Percent</i>	<i>Percent</i>
CA	67,021	71,857	68,837	2.7	-4.2
Oth Sts ²	67,854	72,284	63,322	-6.7	-12.4
US	134,875	144,141	132,159	-2.0	-8.3
Atlantic	21,243	22,307	20,263	-4.6	-9.2
Central	19,903	17,247	14,473	-27.3	-16.1
West	93,729	104,587	97,423	3.9	-6.8

¹ Revised.

² States not shown when fewer than 3 plants reported or individual plant operations could be disclosed. Percent change shown only when comparable States are included in the calculation.

**Dry Whey, Human: Production by State
and United States, July 2008-2009**

State	Jul 2008	Jun ¹ 2009	Jul 2009	Change From	
				Jul 2008	Jun 2009
	<i>1,000 Pounds</i>	<i>1,000 Pounds</i>	<i>1,000 Pounds</i>	<i>Percent</i>	<i>Percent</i>
NY	11,051	11,338	10,431	-5.6	-8.0
WI	27,190	25,708	25,600	-5.8	-0.4
Oth Sts ²	49,539	51,906	53,583	8.2	3.2
US	87,780	88,952	89,614	2.1	0.7
Atlantic	19,433	20,663	19,471	0.2	-5.8
Central	41,093	40,897	41,259	0.4	0.9
West	27,254	27,392	28,884	6.0	5.4

¹ Revised.

² States not shown when fewer than 3 plants reported or individual plant operations could be disclosed. Percent change shown only when comparable States are included in the calculation.

**Ice Cream, Regular, Hard: Production by State and United States,
July 2008-2009**

State	Jul 2008	Jun ¹ 2009	Jul 2009	Change From	
				Jul 2008	Jun 2009
	<i>1,000 Gallons</i>	<i>1,000 Gallons</i>	<i>1,000 Gallons</i>	<i>Percent</i>	<i>Percent</i>
CA	12,482	15,609	14,986	20.1	-4.0
FL	1,439				
IN	6,727	8,663	8,116	20.6	-6.3
MO	1,996	2,930	2,593	29.9	-11.5
NY	3,240	2,619	2,948	-9.0	12.6
NC	1,813	1,507	1,647	-9.2	9.3
OH	2,514	2,623	2,310	-8.1	-11.9
OR	1,645	1,862	1,627	-1.1	-12.6
PA	3,669	3,659	3,659	-0.3	
TN	1,554	963	1,022	-34.2	6.1
TX	6,119	5,169	4,532	-25.9	-12.3
UT	2,724	2,449	2,137	-21.5	-12.7
Oth Sts ²	38,795	41,865	40,326		
US	84,717	89,918	85,903	1.4	-4.5
N Atl	14,893	13,708	15,261	2.5	11.3
S Atl	6,709	6,494	6,319	-5.8	-2.7
E N Cen	16,404	18,287	17,983	9.6	-1.7
W N Cen	14,273	16,956	13,276	-7.0	-21.7
S Cen	11,956	10,653	10,466	-12.5	-1.8
West	20,482	23,820	22,598	10.3	-5.1

¹ Revised.

² States not shown when fewer than 3 plants reported or individual plant operations could be disclosed. Percent change shown only when comparable States are included in the calculation.

**Canned Milk and Dry Milk Products: Manufacturers' Shipments,
and Stocks, July, 2008-2009**

Product	Jul 2008	Jun 2009 ¹	Jul 2009	Change From	
				Jul 2008	Jun 2009
	<i>1,000 Pounds</i>	<i>1,000 Pounds</i>	<i>1,000 Pounds</i>	<i>Percent</i>	<i>Percent</i>
	Manufacturers' Shipments ²				
Nonfat Dry Milk, Human	112,150	140,935	152,445	35.9	8.2
	Manufacturers' Stocks End-of-Month ³				
	<i>1,000 Pounds</i>	<i>1,000 Pounds</i>	<i>1,000 Pounds</i>	<i>Percent</i>	<i>Percent</i>
Canned Evaporated and Condensed Whole Milk	87,026	95,049	104,945	20.6	10.4
Nonfat Dry Milk, Human	154,642	196,148	172,741	11.7	-11.9
Dry Buttermilk, Total	8,975	5,462	5,556	-38.1	1.7

¹ Revised.

² For dry products, shipments of bulk goods only.

³ Stocks held by manufacturers at all points and in transit on last day of month.

Procedures and Reliability: Estimates included in this report are based on data provided each month by manufacturers of these products. In 32 States, the State Departments of Agriculture assist in collection of data, which eliminates duplicate reporting and reduces respondent burden. Data are collected by mail, personal and telephone interviews following the close of each month. There were 1,116 manufacturers that made one or more products in 2008. Each month, reports are generally received from all dairy plants in States with small numbers of plants. In States with large numbers of plants, survey procedures are designed to obtain monthly reports from all large plants and from a sample of small plants. Monthly estimates are based upon returns from about 70 percent of the plants which account for 70 to 90 percent of the total production of major dairy products.

Revision Policy: Monthly estimates are subject to revision the month following the preliminary estimates. Annual estimates are published in late April in the "**Dairy Products Yearly Summary**" report which includes any revisions made to current and previous year. An attempt is made to get information from all plants for preparing these estimates.

Information Contacts

Listed below are the commodity specialists in the Livestock Branch of the National Agricultural Statistics Service to contact for additional information.

Dan Kerestes, Chief, Livestock Branch (202) 720-3570

Livestock Section

Scott Hollis, Head, Livestock Section (202) 690-2424
 Jim Collom - Dairy Products (202) 690-3236
 Joe Gaynor - Dairy Products Prices (202) 690-2168
 Jason Hardegree - Cattle, Cattle on Feed (202) 720-3040
 Sherry Bertramsen - Livestock Slaughter (515) 284-4340
 Everett Olbert - Sheep and Goats (202) 720-4751
 Mike Miller - Milk Production and Milk Cows (202) 720-3278
 Nick Streff - Hogs and Pigs (202) 720-3106

ACCESS TO REPORTS!!

For your convenience, there are several ways to obtain NASS reports, data products, and services:

INTERNET ACCESS

All NASS reports are available free of charge. For free access, connect to the Internet and go to the NASS Home Page at: www.nass.usda.gov.

E-MAIL SUBSCRIPTION

All NASS reports are available by subscription free of charge direct to your e-mail address. Starting with the NASS Home Page at www.nass.usda.gov, under the right navigation, *Receive reports by Email*, click on **National** or **State**. Follow the instructions on the screen.

PRINTED REPORTS OR DATA PRODUCTS

CALL OUR TOLL-FREE ORDER DESK: 800-999-6779 (U.S. and Canada)
Other areas, please call 703-605-6220 FAX: 703-605-6900
(Visa, MasterCard, check, or money order acceptable for payment.)

ASSISTANCE

For **assistance** with general agricultural statistics or further information about NASS or its products or services, contact the **Agricultural Statistics Hotline** at **800-727-9540**, 7:30 a.m. to 4:00 p.m. ET, or e-mail: nass@nass.usda.gov.

The U.S. Department of Agriculture (USDA) prohibits discrimination in all its programs and activities on the basis of race, color, national origin, age, disability, and where applicable, sex, marital status, familial status, parental status, religion, sexual orientation, genetic information, political beliefs, reprisal, or because all or a part of an individual's income is derived from any public assistance program. (Not all prohibited bases apply to all programs.) Persons with disabilities who require alternative means for communication of program information (Braille, large print, audiotape, etc.) should contact USDA's TARGET Center at (202) 720-2600 (voice and TDD).

To file a complaint of discrimination, write to USDA, Director, Office of Civil Rights, 1400 Independence Avenue, S.W., Washington, D.C. 20250-9410, or call (800) 795-3272 (voice) or (202) 720-6382 (TDD). USDA is an equal opportunity provider and employer.

**USDA Data Users' Meeting
Monday, November 2, 2009**

**Crowne Plaza Hotel Chicago-Metro
Chicago, Illinois 60661
(312) 829-5000**

The USDA's National Agricultural Statistics Service will be organizing an open forum for data users. The purpose will be to provide updates on pending changes in the various statistical and information programs and seeks comments and input from data users. Other USDA agencies to be represented will include the Agricultural Marketing Service, the Economic Research Service, the Foreign Agricultural Service, and World Agricultural Outlook Board. The Foreign Trade Division from the Census Bureau will also be included in the meeting.

For registration details or additional information for the Data Users' Meeting, see the NASS homepage at www.nass.usda.gov/forum/ or contact Marjorie Taylor (NASS) at (202) 690-8141 or at marjorie_taylor@nass.usda.gov.

This Data Users' Meeting precedes an Industry Outlook Conference that will be held at the same location on Tuesday, November 3, 2009. The Outlook Conference brings together analysts from various commodity sectors to discuss the outlook situation. For registration details or additional information for the Industry Outlook Meeting see the Livestock and Marketing Information Center (LMIC) homepage at www.lmic.info or contact Jim Robb at (720) 544-2941 or at robb@lmic.info.