
Released October 2, 2009, by the National Agricultural Statistics Service (NASS), Agricultural Statistics Board, U.S. Department of Agriculture. For information on *Dairy Products* call Jim Collom at (202) 690-3236, office hours 7:00 a.m. to 3:30 p.m. ET.

August 2009 Highlights

Total cheese output (excluding cottage cheese) was 850 million pounds, 2.6 percent above August 2008 and 1.0 percent above July 2009.

Italian type cheese production totaled 350 million pounds, 3.9 percent above August 2008 and 0.1 percent above July 2009.

American type cheese production totaled 345 million pounds, 1.6 percent above August 2008 but 2.0 percent below July 2009.

Butter production was 100 million pounds, 13.6 percent below August 2008 and 12.3 percent below July 2009.

Dry Milk Powders: (comparisons with August 2008)

Nonfat dry milk, human --- 106 million pounds, down 8.3 percent.

Skim milk powders --- 10.7 million pounds, down 59.9 percent.

Whey products: (comparisons with August 2008)

Dry whey, total --- 92.2 million pounds, up 3.3 percent.

Lactose, human and animal --- 62.4 million pounds, down 1.7 percent.

Whey protein concentrate, total --- 34.7 million pounds, down 0.4 percent.

Frozen products: (comparisons with August 2008)

Ice cream, Regular (hard) --- 79.1 million gallons, up 0.4 percent.

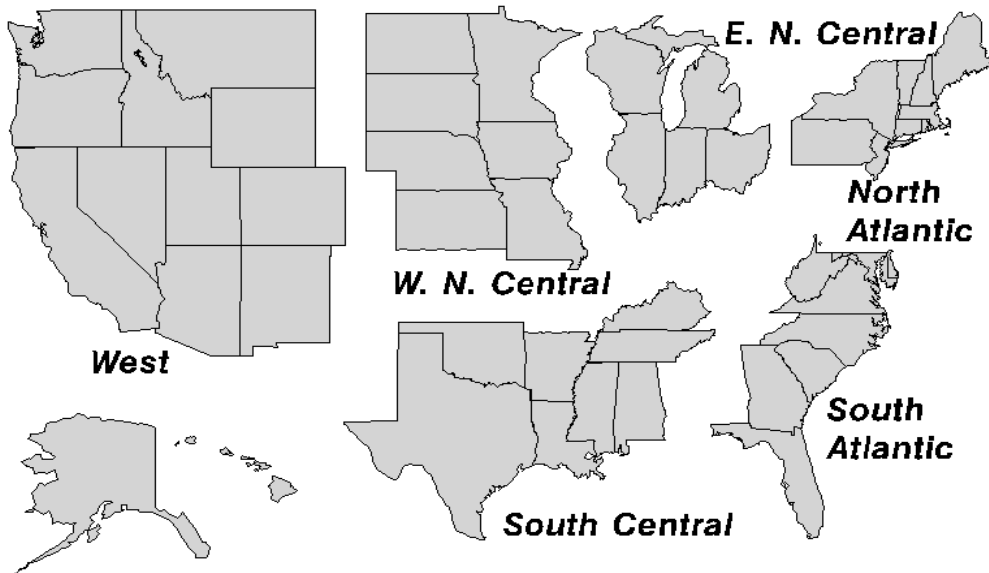
Ice cream, Lowfat (total) --- 36.6 million gallons, up 1.2 percent.

Sherbet (hard) --- 4.34 million gallons, down 4.0 percent.

Frozen Yogurt (total) --- 6.58 million gallons, up 3.5 percent.

U. S. Geographic Regions Dairy Products

If a region is unable to be published for confidentiality reasons, it will be combined with other regions when possible. For example, if North Atlantic can not be published, it will be combined with South Atlantic to publish Atlantic. The West North Central and East North Central will be combined, if necessary, to form North Central. In the event that neither could be published, they may be combined with South Central to publish Central. Some tables will have only limited regions shown, therefore the regions may not add to the United States total.



Contents

Page

Dairy Products: Production by Product, United States	1
Whey and Modified Whey Products: Production, Stocks, and Prices, United States	2
Dairy Products: Production by Product and Month, United States	3
Select Commodities by State and United States	10
Canned Milk and Dry Milk Products: Manufacturers' Shipments and Stocks	15
Procedures and Reliability	16
Information Contacts	16

**Dairy Products: Production by Product,
United States, August, 2008-2009**

Product	Aug 2008	Jul 2009 ¹	Aug 2009	Change From	
				Aug 2008	Jul 2009
	<i>1,000 Pounds</i>	<i>1,000 Pounds</i>	<i>1,000 Pounds</i>	<i>Percent</i>	<i>Percent</i>
Butter	115,939	114,293	100,181	-13.6	-12.3
Cheese					
American Types ²	339,841	352,424	345,243	1.6	-2.0
Cheddar	257,249	267,125	262,754	2.1	-1.6
Other American	82,592	85,299	82,489	-0.1	-3.3
Swiss	25,936	27,184	25,991	0.2	-4.4
Brick and Muenster	12,304	12,061	11,241	-8.6	-6.8
Cream and Neufchatel	68,834	60,963	76,792	11.6	26.0
Hispanic	16,645	16,860	17,377	4.4	3.1
Italian Types	336,569	349,291	349,780	3.9	0.1
Mozzarella	260,268	275,051	274,185	5.3	-0.3
Other Italian	76,301	74,240	75,595	-0.9	1.8
All Other Types	28,189	22,481	23,107	-18.0	2.8
Total Cheese	828,318	841,264	849,531	2.6	1.0
Cottage Cheese, Curd ³	37,025	40,759	39,824	7.6	-2.3
Cottage Cheese, Cream ⁴	29,119	31,733	31,459	8.0	-0.9
Cottage Cheese, Lowfat ⁵	33,587	35,028	33,298	-0.9	-4.9
Canned Evaporated and Condensed Whole Milk	49,839	46,133	40,627	-18.5	-11.9
Dry Whole Milk	3,675	4,604	5,192	41.3	12.8
Nonfat Dry Milk, Human Skim Milk Powders ⁶	115,205	131,963	105,620	-8.3	-20.0
Dry Skim Milk, Animal	26,649	14,023	10,677	-59.9	-23.9
Dry Buttermilk	1,000	800	688	-31.2	-14.0
Sour Cream	5,627	5,739	5,099	-9.4	-11.2
Yogurt, Plain & Flavored	94,794	93,361	94,105	-0.7	0.8
	304,917	304,189	328,726	7.8	8.1
	<i>1,000 Gallons</i>	<i>1,000 Gallons</i>	<i>1,000 Gallons</i>	<i>Percent</i>	<i>Percent</i>
Frozen Products					
Ice Cream, Regular, Hard	78,790	85,969	79,131	0.4	-8.0
Ice Cream, Lowfat, Hard	12,180	12,632	11,762	-3.4	-6.9
Ice Cream, Lowfat, Soft	23,942	27,083	24,794	3.6	-8.5
Ice Cream, Lowfat, Total	36,122	39,715	36,556	1.2	-8.0
Ice Cream, Nonfat, Hard	1,267	1,445	1,227	-3.2	-15.1
Sherbet, Hard	4,523	5,018	4,344	-4.0	-13.4
Water and Juice Ices	5,702	6,272	5,307	-6.9	-15.4
Frozen Yogurt, Total	6,359	7,083	6,584	3.5	-7.0
Regular & Lowfat, Hard	1,893	1,688	1,462	-22.8	-13.4
Nonfat, Hard	628	696	691	10.0	-0.7
Other Frozen Dairy Products	1,260	1,211	1,290	2.4	6.5
Mix for Frozen Products					
Ice Cream Mix	43,215	47,255	43,493	0.6	-8.0
Ice Cream, Lowfat, Mix	21,155	22,866	21,037	-0.6	-8.0
Ice Cream, Nonfat, Mix	744	931	741	-0.4	-20.4
Sherbet Mix	3,013	3,233	2,872	-4.7	-11.2
Yogurt Mix	4,119	4,293	3,990	-3.1	-7.1

¹ Revised.

² Includes Cheddar, Colby, Monterey, and Jack.

³ Mostly used for processing into cream or lowfat cottage cheese.

⁴ Fat content 4 percent or more.

⁵ Fat content less than 4 percent.

⁶ Includes protein standardized and blends.

⁷ Dry milk protein concentrate 40-89.9 percent protein.

**Whey and Modified Whey Products: Production, Stocks,
and Prices, United States, August, 2008-2009**

Product	Aug 2008	Jul 2009 ¹	Aug 2009	Change From	
				Aug 2008	Jul 2009
Production					
	<i>1,000 Pounds</i>	<i>1,000 Pounds</i>	<i>1,000 Pounds</i>	<i>Percent</i>	<i>Percent</i>
Condensed Whey, Solids Content ²					
Sweet-Type, Human	8,534	7,583	7,529	-11.8	-0.7
Dry Whey Products					
Dry Whey, Human	84,926	90,415	87,014	2.5	-3.8
Dry Whey, Animal	4,327	3,670	5,170	19.5	40.9
Dry Whey, Total	89,253	94,085	92,184	3.3	-2.0
Reduced Lactose and Minerals					
Human Food	2,425	3,047	2,622	8.1	-13.9
Animal Feed	4,281	4,075	4,017	-6.2	-1.4
Lactose, Human and Animal	63,488	61,223	62,417	-1.7	2.0
Whey					
Protein Concentrate					
Human ³	31,404	31,361	31,515	0.4	0.5
Animal ³	3,418	2,988	3,161	-7.5	5.8
Total ³	34,822	34,349	34,676	-0.4	1.0
25.0-49.9 Percent ⁴	24,551	23,053	22,850	-6.9	-0.9
50.0-89.9 Percent ⁴	10,271	11,296	11,826	15.1	4.7
Protein Isolates ⁵	4,242	4,464	4,701	10.8	5.3
Manufacturers' Stocks End-of-Month ⁶					
	<i>1,000 Pounds</i>	<i>1,000 Pounds</i>	<i>1,000 Pounds</i>	<i>Percent</i>	<i>Percent</i>
Dry Whey Products					
Dry Whey, Human	56,544	48,374	50,442	-10.8	4.3
Dry Whey, Animal	6,598	1,370	2,694	-59.2	96.6
Dry Whey, Total	63,142	49,744	53,136	-15.8	6.8
Reduced Lactose and Minerals					
Human and Animal ⁷	18,266	14,582	14,088	-22.9	-3.4
Lactose, Human and Animal	93,095	60,163	54,043	-41.9	-10.2
Whey					
Protein Concentrate					
Human ³	37,657	33,175	33,612	-10.7	1.3
Animal ³	872	2,182	2,169	148.7	-0.6
Total ³	38,529	35,357	35,781	-7.1	1.2
25.0-49.9 Percent ⁴	25,889	22,254	24,110	-6.9	8.3
50.0-89.9 Percent ⁴	12,640	13,103	11,671	-7.7	-10.9
Manufacturers' Selling Price ⁸					
	<i>Cents per Pound</i>	<i>Cents per Pound</i>	<i>Cents per Pound</i>	<i>Cents Change</i>	<i>Cents Change</i>
Dry Whey, Animal	17.0	25.9	27.7	10.7	1.8

¹ Revised.

² Final marketable product only. Does not include quantity used or shipped to another plant for further processing into dry whey or modified whey products. Does not include sweet-type, animal whey.

³ Whey Protein Concentrate, 25.0 to 89.9 percent.

⁴ Whey Protein Concentrate, Human and Animal.

⁵ Whey Protein Isolate, 90.0 percent or greater.

⁶ Stocks held by manufacturers at all points and in transit.

⁷ Reduced lactose and minerals stocks combined to avoid disclosure of individual operations.

⁸ Prices for bulk goods, f.o.b. plant. Average monthly prices reported by firms.

**Dairy Products: Production by Product and Month,
United States, 2008-2009 ¹**

Product and Month	By Month			Cumulative		
	2008	2009	Change From 2008	2008	2009	Change From 2008
	<i>1,000 Pounds</i>	<i>1,000 Pounds</i>	<i>Percent</i>	<i>1,000 Pounds</i>	<i>1,000 Pounds</i>	<i>Percent</i>
Total Cheese						
Jan	821,181	823,961	0.3	821,181	823,961	0.3
Feb	792,408	769,821	-2.9	1,613,589	1,593,782	-1.2
Mar	843,830	870,828	3.2	2,457,419	2,464,610	0.3
Apr	820,401	845,270	3.0	3,277,820	3,309,880	1.0
May	838,551	859,675	2.5	4,116,371	4,169,555	1.3
Jun	816,225	834,177	2.2	4,932,596	5,003,732	1.4
Jul	822,182	841,264	2.3	5,754,778	5,844,996	1.6
Aug	828,318	849,531	2.6	6,583,096	6,694,527	1.7
Sep	809,580			7,392,676		
Oct	850,203			8,242,879		
Nov	828,591			9,071,470		
Dec	863,060			9,934,530		
American Cheese						
Jan	336,700	353,224	4.9	336,700	353,224	4.9
Feb	321,479	320,751	-0.2	658,179	673,975	2.4
Mar	340,830	359,029	5.3	999,009	1,033,004	3.4
Apr	340,115	351,162	3.2	1,339,124	1,384,166	3.4
May	352,587	366,464	3.9	1,691,711	1,750,630	3.5
Jun	336,745	353,396	4.9	2,028,456	2,104,026	3.7
Jul	341,914	352,424	3.1	2,370,370	2,456,450	3.6
Aug	339,841	345,243	1.6	2,710,211	2,801,693	3.4
Sep	320,793			3,031,004		
Oct	343,192			3,374,196		
Nov	338,220			3,712,416		
Dec	358,878			4,071,294		
Cheddar Cheese						
Jan	264,585	274,091	3.6	264,585	274,091	3.6
Feb	253,176	241,474	-4.6	517,761	515,565	-0.4
Mar	268,179	273,581	2.0	785,940	789,146	0.4
Apr	270,445	268,897	-0.6	1,056,385	1,058,043	0.2
May	274,765	285,473	3.9	1,331,150	1,343,516	0.9
Jun	260,962	272,996	4.6	1,592,112	1,616,512	1.5
Jul	265,249	267,125	0.7	1,857,361	1,883,637	1.4
Aug	257,249	262,754	2.1	2,114,610	2,146,391	1.5
Sep	238,336			2,352,946		
Oct	255,411			2,608,357		
Nov	257,466			2,865,823		
Dec	283,307			3,149,130		

See footnote(s) at end of table.

--continued

**Dairy Products: Production by Product and Month,
United States, 2008-2009 ¹ (continued)**

Product and Month	By Month			Cumulative		
	2008	2009	Change From 2008	2008	2009	Change From 2008
	<i>1,000 Pounds</i>	<i>1,000 Pounds</i>	<i>Percent</i>	<i>1,000 Pounds</i>	<i>1,000 Pounds</i>	<i>Percent</i>
Italian Cheese						
Jan	355,109	347,897	-2.0	355,109	347,897	-2.0
Feb	339,375	319,870	-5.7	694,484	667,767	-3.8
Mar	363,145	362,867	-0.1	1,057,629	1,030,634	-2.6
Apr	349,049	350,267	0.3	1,406,678	1,380,901	-1.8
May	349,033	349,963	0.3	1,755,711	1,730,864	-1.4
Jun	336,646	344,448	2.3	2,092,357	2,075,312	-0.8
Jul	337,254	349,291	3.6	2,429,611	2,424,603	-0.2
Aug	336,569	349,780	3.9	2,766,180	2,774,383	0.3
Sep	339,473			3,105,653		
Oct	348,051			3,453,704		
Nov	340,383			3,794,087		
Dec	363,941			4,158,028		
Mozzarella						
Jan	282,325	268,056	-5.1	282,325	268,056	-5.1
Feb	267,174	247,418	-7.4	549,499	515,474	-6.2
Mar	288,152	281,087	-2.5	837,651	796,561	-4.9
Apr	275,693	272,270	-1.2	1,113,344	1,068,831	-4.0
May	273,126	273,405	0.1	1,386,470	1,342,236	-3.2
Jun	262,443	269,830	2.8	1,648,913	1,612,066	-2.2
Jul	261,510	275,051	5.2	1,910,423	1,887,117	-1.2
Aug	260,268	274,185	5.3	2,170,691	2,161,302	-0.4
Sep	260,972			2,431,663		
Oct	266,114			2,697,777		
Nov	261,641			2,959,418		
Dec	279,973			3,239,391		
Other Italian						
Jan	72,784	79,841	9.7	72,784	79,841	9.7
Feb	72,201	72,452	0.3	144,985	152,293	5.0
Mar	74,993	81,780	9.1	219,978	234,073	6.4
Apr	73,356	77,997	6.3	293,334	312,070	6.4
May	75,907	76,558	0.9	369,241	388,628	5.3
Jun	74,203	74,618	0.6	443,444	463,246	4.5
Jul	75,744	74,240	-2.0	519,188	537,486	3.5
Aug	76,301	75,595	-0.9	595,489	613,081	3.0
Sep	78,501			673,990		
Oct	81,937			755,927		
Nov	78,742			834,669		
Dec	83,968			918,637		

See footnote(s) at end of table.

--continued

**Dairy Products: Production by Product and Month,
United States, 2008-2009 ¹ (continued)**

Product and Month	By Month			Cumulative		
	2008	2009	Change From 2008	2008	2009	Change From 2008
	<i>1,000 Pounds</i>	<i>1,000 Pounds</i>	<i>Percent</i>	<i>1,000 Pounds</i>	<i>1,000 Pounds</i>	<i>Percent</i>
Butter						
Jan	169,218	174,684	3.2	169,218	174,684	3.2
Feb	146,737	145,687	-0.7	315,955	320,371	1.4
Mar	149,851	147,245	-1.7	465,806	467,616	0.4
Apr	149,984	142,509	-5.0	615,790	610,125	-0.9
May	139,858	139,373	-0.3	755,648	749,498	-0.8
Jun	116,713	125,497	7.5	872,361	874,995	0.3
Jul	114,185	114,293	0.1	986,546	989,288	0.3
Aug	115,939	100,181	-13.6	1,102,485	1,089,469	-1.2
Sep	121,035			1,223,520		
Oct	130,633			1,354,153		
Nov	133,586			1,487,739		
Dec	156,339			1,644,078		
Nonfat Dry Milk, Human						
Jan	112,970	154,812	37.0	112,970	154,812	37.0
Feb	121,107	122,812	1.4	234,077	277,624	18.6
Mar	136,993	135,277	-1.3	371,070	412,901	11.3
Apr	134,861	138,529	2.7	505,931	551,430	9.0
May	131,607	149,218	13.4	637,538	700,648	9.9
Jun	135,979	144,141	6.0	773,517	844,789	9.2
Jul	134,875	131,963	-2.2	908,392	976,752	7.5
Aug	115,205	105,620	-8.3	1,023,597	1,082,372	5.7
Sep	85,541			1,109,138		
Oct	121,071			1,230,209		
Nov	133,702			1,363,911		
Dec	155,262			1,519,173		
Skim Milk Powders ²						
Jan	45,614	17,663	-61.3	45,614	17,663	-61.3
Feb	33,804	22,693	-32.9	79,418	40,356	-49.2
Mar	34,428	24,432	-29.0	113,846	64,788	-43.1
Apr	36,137	24,645	-31.8	149,983	89,433	-40.4
May	45,511	26,731	-41.3	195,494	116,164	-40.6
Jun	33,873	16,796	-50.4	229,367	132,960	-42.0
Jul	27,120	14,023	-48.3	256,487	146,983	-42.7
Aug	26,649	10,677	-59.9	283,136	157,660	-44.3
Sep	38,868			322,004		
Oct	17,556			339,560		
Nov	16,477			356,037		
Dec	17,793			373,830		

See footnote(s) at end of table.

--continued

**Dairy Products: Production by Product and Month,
United States, 2008-2009 ¹ (continued)**

Product and Month	By Month			Cumulative		
	2008	2009	Change From 2008	2008	2009	Change From 2008
	<i>1,000 Pounds</i>	<i>1,000 Pounds</i>	<i>Percent</i>	<i>1,000 Pounds</i>	<i>1,000 Pounds</i>	<i>Percent</i>
Dry Whey, Total ³						
Jan	93,939	88,464	-5.8	93,939	88,464	-5.8
Feb	89,200	82,869	-7.1	183,139	171,333	-6.4
Mar	99,767	92,213	-7.6	282,906	263,546	-6.8
Apr	98,668	92,690	-6.1	381,574	356,236	-6.6
May	99,025	93,861	-5.2	480,599	450,097	-6.3
Jun	95,045	93,327	-1.8	575,644	543,424	-5.6
Jul	91,512	94,085	2.8	667,156	637,509	-4.4
Aug	89,253	92,184	3.3	756,409	729,693	-3.5
Sep	85,891			842,300		
Oct	87,708			930,008		
Nov	86,416			1,016,424		
Dec	91,115			1,107,539		
Lactose, Human and Animal						
Jan	62,275	59,807	-4.0	62,275	59,807	-4.0
Feb	60,504	51,610	-14.7	122,779	111,417	-9.3
Mar	64,289	59,224	-7.9	187,068	170,641	-8.8
Apr	63,817	58,491	-8.3	250,885	229,132	-8.7
May	65,588	59,991	-8.5	316,473	289,123	-8.6
Jun	63,383	60,090	-5.2	379,856	349,213	-8.1
Jul	65,229	61,223	-6.1	445,085	410,436	-7.8
Aug	63,488	62,417	-1.7	508,573	472,853	-7.0
Sep	58,834			567,407		
Oct	60,005			627,412		
Nov	57,454			684,866		
Dec	60,429			745,295		
Whey Protein Concentrate, Total						
Jan	35,241	34,185	-3.0	35,241	34,185	-3.0
Feb	33,598	31,243	-7.0	68,839	65,428	-5.0
Mar	36,552	33,840	-7.4	105,391	99,268	-5.8
Apr	36,286	31,888	-12.1	141,677	131,156	-7.4
May	37,046	34,781	-6.1	178,723	165,937	-7.2
Jun	34,571	33,832	-2.1	213,294	199,769	-6.3
Jul	36,787	34,349	-6.6	250,081	234,118	-6.4
Aug	34,822	34,676	-0.4	284,903	268,794	-5.7
Sep	33,081			317,984		
Oct	35,830			353,814		
Nov	33,805			387,619		
Dec	36,028			423,647		

See footnote(s) at end of table.

--continued

**Dairy Products: Production by Product and Month,
United States, 2008-2009 ¹ (continued)**

Product and Month	By Month			Cumulative		
	2008	2009	Change From 2008	2008	2009	Change From 2008
	<i>1,000 Pounds</i>	<i>1,000 Pounds</i>	<i>Percent</i>	<i>1,000 Pounds</i>	<i>1,000 Pounds</i>	<i>Percent</i>
Cream Cottage Cheese						
Jan	26,831	26,400	-1.6	26,831	26,400	-1.6
Feb	25,187	26,713	6.1	52,018	53,113	2.1
Mar	27,822	30,807	10.7	79,840	83,920	5.1
Apr	26,229	31,287	19.3	106,069	115,207	8.6
May	28,849	31,721	10.0	134,918	146,928	8.9
Jun	27,000	30,581	13.3	161,918	177,509	9.6
Jul	28,930	31,733	9.7	190,848	209,242	9.6
Aug	29,119	31,459	8.0	219,967	240,701	9.4
Sep	28,487			248,454		
Oct	27,480			275,934		
Nov	24,163			300,097		
Dec	25,724			325,821		
Lowfat Cottage Cheese						
Jan	33,057	30,915	-6.5	33,057	30,915	-6.5
Feb	31,451	30,933	-1.6	64,508	61,848	-4.1
Mar	32,973	34,563	4.8	97,481	96,411	-1.1
Apr	33,773	34,652	2.6	131,254	131,063	-0.1
May	35,483	32,932	-7.2	166,737	163,995	-1.6
Jun	32,074	33,241	3.6	198,811	197,236	-0.8
Jul	33,416	35,028	4.8	232,227	232,264	0.0
Aug	33,587	33,298	-0.9	265,814	265,562	-0.1
Sep	34,019			299,833		
Oct	32,767			332,600		
Nov	27,098			359,698		
Dec	29,935			389,633		
Sour Cream						
Jan	92,190	86,957	-5.7	92,190	86,957	-5.7
Feb	81,494	81,338	-0.2	173,684	168,295	-3.1
Mar	93,193	97,476	4.6	266,877	265,771	-0.4
Apr	84,041	92,823	10.4	350,918	358,594	2.2
May	97,322	94,799	-2.6	448,240	453,393	1.1
Jun	90,846	95,144	4.7	539,086	548,537	1.8
Jul	91,042	93,361	2.5	630,128	641,898	1.9
Aug	94,794	94,105	-0.7	724,922	736,003	1.5
Sep	88,541			813,463		
Oct	102,046			915,509		
Nov	105,245			1,020,754		
Dec	106,325			1,127,079		

See footnote(s) at end of table.

--continued

**Dairy Products: Production by Product and Month,
United States, 2008-2009 ¹ (continued)**

Product and Month	By Month			Cumulative		
	2008	2009	Change From 2008	2008	2009	Change From 2008
	<i>1,000 Gallons</i>	<i>1,000 Gallons</i>	<i>Percent</i>	<i>1,000 Gallons</i>	<i>1,000 Gallons</i>	<i>Percent</i>
Ice Cream, Regular, Hard						
Jan	62,898	57,527	-8.5	62,898	57,527	-8.5
Feb	66,569	63,608	-4.4	129,467	121,135	-6.4
Mar	75,908	76,124	0.3	205,375	197,259	-4.0
Apr	77,122	79,517	3.1	282,497	276,776	-2.0
May	81,171	80,636	-0.7	363,668	357,412	-1.7
Jun	91,952	89,918	-2.2	455,620	447,330	-1.8
Jul	84,717	85,969	1.5	540,337	533,299	-1.3
Aug	78,790	79,131	0.4	619,127	612,430	-1.1
Sep	75,864			694,991		
Oct	70,723			765,714		
Nov	61,466			827,180		
Dec	53,734			880,914		
Ice Cream, Lowfat, Total						
Jan	25,673	23,788	-7.3	25,673	23,788	-7.3
Feb	27,723	26,518	-4.3	53,396	50,306	-5.8
Mar	32,192	35,860	11.4	85,588	86,166	0.7
Apr	36,386	35,182	-3.3	121,974	121,348	-0.5
May	37,585	36,512	-2.9	159,559	157,860	-1.1
Jun	41,838	42,240	1.0	201,397	200,100	-0.6
Jul	38,853	39,715	2.2	240,250	239,815	-0.2
Aug	36,122	36,556	1.2	276,372	276,371	
Sep	29,976			306,348		
Oct	27,291			333,639		
Nov	21,789			355,428		
Dec	21,794			377,222		
Sherbet, Hard						
Jan	3,935	3,552	-9.7	3,935	3,552	-9.7
Feb	4,060	3,980	-2.0	7,995	7,532	-5.8
Mar	5,358	5,090	-5.0	13,353	12,622	-5.5
Apr	5,536	5,106	-7.8	18,889	17,728	-6.1
May	5,448	4,989	-8.4	24,337	22,717	-6.7
Jun	5,546	5,517	-0.5	29,883	28,234	-5.5
Jul	5,189	5,018	-3.3	35,072	33,252	-5.2
Aug	4,523	4,344	-4.0	39,595	37,596	-5.0
Sep	4,646			44,241		
Oct	4,176			48,417		
Nov	3,424			51,841		
Dec	3,442			55,283		

See footnote(s) at end of table.

--continued

**Dairy Products: Production by Product and Month,
United States, 2008-2009 ¹ (continued)**

Product and Month	By Month			Cumulative		
	2008	2009	Change From 2008	2008	2009	Change From 2008
	<i>1,000 Pounds</i>	<i>1,000 Pounds</i>	<i>Percent</i>	<i>1,000 Pounds</i>	<i>1,000 Pounds</i>	<i>Percent</i>
Yogurt, Plain & Flavored						
Jan	301,753	306,406	1.5	301,753	306,406	1.5
Feb	303,873	313,949	3.3	605,626	620,355	2.4
Mar	330,037	365,333	10.7	935,663	985,688	5.3
Apr	301,550	323,716	7.4	1,237,213	1,309,404	5.8
May	309,007	325,561	5.4	1,546,220	1,634,965	5.7
Jun	297,939	334,486	12.3	1,844,159	1,969,451	6.8
Jul	287,147	304,189	5.9	2,131,306	2,273,640	6.7
Aug	304,917	328,726	7.8	2,436,223	2,602,366	6.8
Sep	331,046			2,767,269		
Oct	301,458			3,068,727		
Nov	243,349			3,312,076		
Dec	287,183			3,599,259		
	<i>1,000 Gallons</i>	<i>1,000 Gallons</i>	<i>Percent</i>	<i>1,000 Gallons</i>	<i>1,000 Gallons</i>	<i>Percent</i>
Yogurt, Frozen						
Jan	5,419	3,430	-36.7	5,419	3,430	-36.7
Feb	5,716	4,752	-16.9	11,135	8,182	-26.5
Mar	7,237	6,161	-14.9	18,372	14,343	-21.9
Apr	7,400	6,077	-17.9	25,772	20,420	-20.8
May	7,576	5,966	-21.3	33,348	26,386	-20.9
Jun	7,493	6,744	-10.0	40,841	33,130	-18.9
Jul	6,977	7,083	1.5	47,818	40,213	-15.9
Aug	6,359	6,584	3.5	54,177	46,797	-13.6
Sep	5,782			59,959		
Oct	5,359			65,318		
Nov	4,431			69,749		
Dec	4,393			74,142		

¹ July 2009 data revised.

² Includes protein standardized and blends.

³ Excludes all modified dry whey products.

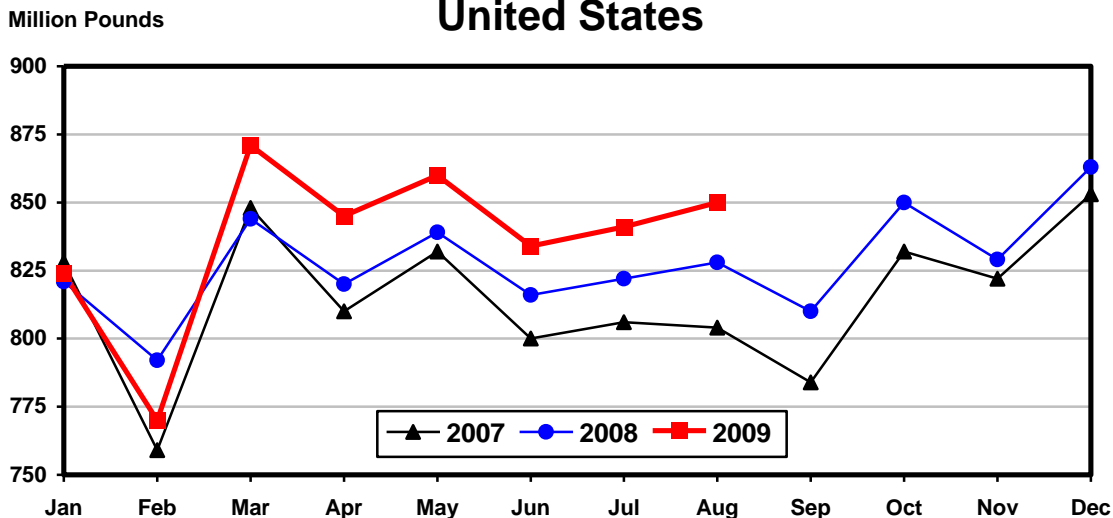
Total Cheese, Excluding Cottage Cheese: Production by State and United States, August 2008-2009

State	Aug 2008	Jul ¹ 2009	Aug 2009	Change From	
				Aug 2008	Jul 2009
	<i>1,000 Pounds</i>	<i>1,000 Pounds</i>	<i>1,000 Pounds</i>	<i>Percent</i>	<i>Percent</i>
CA	173,369	166,846	169,218	-2.4	1.4
ID	75,648	66,518	68,001	-10.1	2.2
IL	6,001	6,823	6,558	9.3	-3.9
IA	13,446	18,413	17,840	32.7	-3.1
MN	50,608	55,527	52,318	3.4	-5.8
NJ	2,142	2,626	2,573	20.1	-2.0
NM	52,615	49,861	50,643	-3.7	1.6
NY	58,667	60,232	67,870	15.7	12.7
OH	14,688	17,101	16,008	9.0	-6.4
PA	32,726	34,070	32,755	0.1	-3.9
SD	19,742	19,784	20,178	2.2	2.0
UT	10,414	8,861	8,834	-15.2	-0.3
VT	13,450	11,070	10,734	-20.2	-3.0
WI	207,443	219,266	224,439	8.2	2.4
Oth Sts ²	97,359	104,266	101,562	4.3	-2.6
US	828,318	841,264	849,531	2.6	1.0
Atlantic	114,728	115,597	122,090	6.4	5.6
Central	353,331	385,579	381,750	8.0	-1.0
West	360,259	340,088	345,691	-4.0	1.6

¹ Revised.

² States not shown when fewer than 3 plants reported or individual plant operations could be disclosed. Percent change shown only when comparable States are included in the calculation.

**Total Cheese Production
United States**



American Cheese: Production by State and United States, August 2008-2009

State	Aug 2008	Jul ¹ 2009	Aug 2009	Change From	
				Aug 2008	Jul 2009
	<i>1,000 Pounds</i>	<i>1,000 Pounds</i>	<i>1,000 Pounds</i>	<i>Percent</i>	<i>Percent</i>
CA	54,291	52,078	52,194	-3.9	0.2
ID	60,853	54,586	55,201	-9.3	1.1
IA	10,944	14,713	13,815	26.2	-6.1
OH	771	1,325	839	8.8	-36.7
OR	14,582	15,124	15,140	3.8	0.1
WI	64,832	71,228	70,500	8.7	-1.0
Oth Sts ²	133,568	143,370	137,554	3.0	-4.1
US	339,841	352,424	345,243	1.6	-2.0
Atlantic	11,553	12,570	12,250	6.0	-2.5
Central	144,349	169,762	162,258	12.4	-4.4
West	183,939	170,092	170,735	-7.2	0.4

¹ Revised.

² States not shown when fewer than 3 plants reported or individual plant operations could be disclosed. Percent change shown only when comparable States are included in the calculation.

Cheddar Cheese: Production by State and United States, August 2008-2009

State	Aug 2008	Jul ¹ 2009	Aug 2009	Change From	
				Aug 2008	Jul 2009
	<i>1,000 Pounds</i>	<i>1,000 Pounds</i>	<i>1,000 Pounds</i>	<i>Percent</i>	<i>Percent</i>
CA	28,470	30,061	30,022	5.5	-0.1
ID	47,534	45,339	44,794	-5.8	-1.2
IA	7,976	9,339	8,789	10.2	-5.9
MN	39,489	43,785	41,791	5.8	-4.6
OH	564	1,043	581	3.0	-44.3
WI	49,126	53,921	54,900	11.8	1.8
Oth Sts ²	84,090	83,637	81,877	-2.6	-2.1
US	257,249	267,125	262,754	2.1	-1.6
Atlantic	11,273	12,254	11,883	5.4	-3.0
Central	114,095	131,780	125,650	10.1	-4.7
West	131,881	123,091	125,221	-5.1	1.7

¹ Revised.

² States not shown when fewer than 3 plants reported or individual plant operations could be disclosed. Percent change shown only when comparable States are included in the calculation.

**Italian Cheese, Total: Production by State and
United States, August 2008-2009**

State	Aug 2008	Jul ¹ 2009	Aug 2009	Change From	
				Aug 2008	Jul 2009
	<i>1,000 Pounds</i>	<i>1,000 Pounds</i>	<i>1,000 Pounds</i>	<i>Percent</i>	<i>Percent</i>
CA	98,665	99,253	101,745	3.1	2.5
NY	31,622	33,172	32,288	2.1	-2.7
PA	19,589	21,394	20,230	3.3	-5.4
WI	95,647	104,349	103,565	8.3	-0.8
Oth Sts ²	91,046	91,123	91,952	1.0	0.9
US	336,569	349,291	349,780	3.9	0.1
Atlantic	64,390	65,129	63,634	-1.2	-2.3
Central	129,357	141,189	137,862	6.6	-2.4
West	142,822	142,973	148,284	3.8	3.7

¹ Revised.

² States not shown when fewer than 3 plants reported or individual plant operations could be disclosed. Percent change shown only when comparable States are included in the calculation.

Mozzarella Cheese: Production by State and United States, August 2008-2009

State	Aug 2008	Jul ¹ 2009	Aug 2009	Change From	
				Aug 2008	Jul 2009
	<i>1,000 Pounds</i>	<i>1,000 Pounds</i>	<i>1,000 Pounds</i>	<i>Percent</i>	<i>Percent</i>
CA	89,253	89,974	90,547	1.4	0.6
NY	16,507	18,996	17,904	8.5	-5.7
WI	67,090	75,132	74,700	11.3	-0.6
Oth Sts ²	87,418	90,949	91,034	4.1	0.1
US	260,268	275,051	274,185	5.3	-0.3
Atlantic	41,225	43,838	41,466	0.6	-5.4
Central	88,500	100,212	98,522	11.3	-1.7
West	130,543	131,001	134,197	2.8	2.4

¹ Revised.

² States not shown when fewer than 3 plants reported or individual plant operations could be disclosed. Percent change shown only when comparable States are included in the calculation.

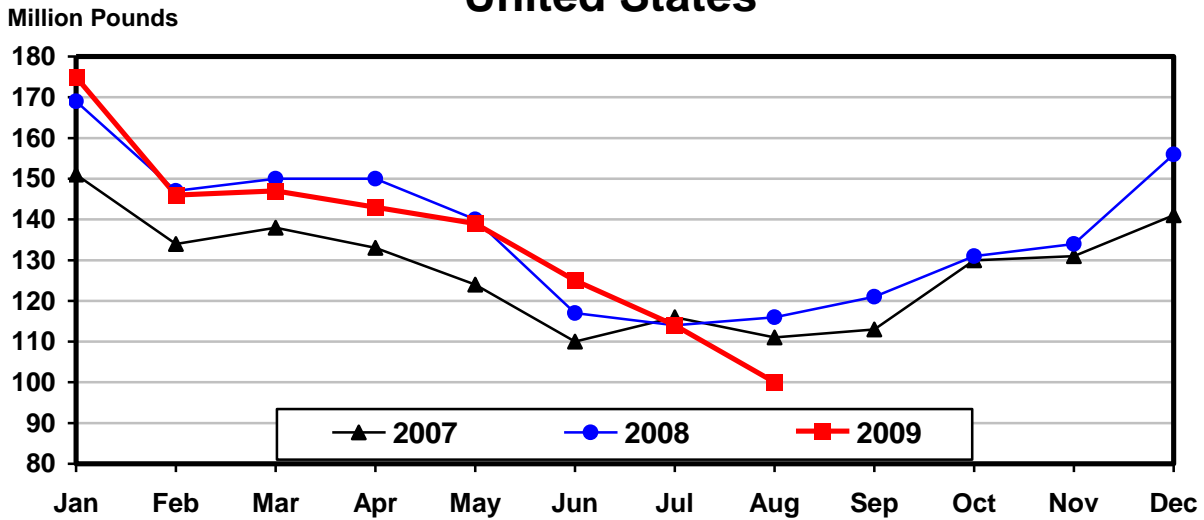
Butter: Production by State and United States, August 2008-2009

State	Aug 2008	Jul ¹ 2009	Aug 2009	Change From	
				Aug 2008	Jul 2009
	<i>1,000 Pounds</i>	<i>1,000 Pounds</i>	<i>1,000 Pounds</i>	<i>Percent</i>	<i>Percent</i>
CA	43,830	37,597	37,614	-14.2	
PA	4,695	6,139	5,199	10.7	-15.3
WI	22,812				
Oth Sts ²	44,602	70,557	57,368		
US	115,939	114,293	100,181	-13.6	-12.3
Atlantic	6,524	9,257	7,642	17.1	-17.4
Central	42,461	46,828	36,929	-13.0	-21.1
West	66,954	58,208	55,610	-16.9	-4.5

¹ Revised.

² States not shown when fewer than 3 plants reported or individual plant operations could be disclosed. Percent change shown only when comparable States are included in the calculation.

Total Butter Production United States



**Nonfat Dry Milk, Human: Production by State
and United States, August 2008-2009**

State	Aug 2008	Jul ¹ 2009	Aug 2009	Change From	
				Aug 2008	Jul 2009
	<i>1,000 Pounds</i>	<i>1,000 Pounds</i>	<i>1,000 Pounds</i>	<i>Percent</i>	<i>Percent</i>
CA	75,327	68,837	68,765	-8.7	-0.1
Oth Sts ²	39,878	63,126	36,855	-7.6	-41.6
US	115,205	131,963	105,620	-8.3	-20.0
Atlantic	13,267	20,263	10,900	-17.8	-46.2
Central	11,168	14,277	8,304	-25.6	-41.8
West	90,770	97,423	86,416	-4.8	-11.3

¹ Revised.

² States not shown when fewer than 3 plants reported or individual plant operations could be disclosed. Percent change shown only when comparable States are included in the calculation.

**Dry Whey, Human: Production by State
and United States, August 2008-2009**

State	Aug 2008	Jul ¹ 2009	Aug 2009	Change From	
				Aug 2008	Jul 2009
	<i>1,000 Pounds</i>	<i>1,000 Pounds</i>	<i>1,000 Pounds</i>	<i>Percent</i>	<i>Percent</i>
NY	10,778	10,431	11,092	2.9	6.3
WI	26,136	25,662	23,900	-8.6	-6.9
Oth Sts ²	48,012	54,322	52,022	8.4	-4.2
US	84,926	90,415	87,014	2.5	-3.8
Atlantic	18,638	19,471	19,421	4.2	-0.3
Central	39,059	41,321	38,191	-2.2	-7.6
West	27,229	29,623	29,402	8.0	-0.7

¹ Revised.

² States not shown when fewer than 3 plants reported or individual plant operations could be disclosed. Percent change shown only when comparable States are included in the calculation.

**Ice Cream, Regular, Hard: Production by State and United States,
August 2008-2009**

State	Aug 2008	Jul ¹ 2009	Aug 2009	Change From	
				Aug 2008	Jul 2009
	<i>1,000 Gallons</i>	<i>1,000 Gallons</i>	<i>1,000 Gallons</i>	<i>Percent</i>	<i>Percent</i>
CA	10,956	14,986	14,808	35.2	-1.2
FL	1,527				
IN	5,669	8,116	7,648	34.9	-5.8
MO	2,722	2,593	2,495	-8.3	-3.8
NY	2,791	2,948	2,562	-8.2	-13.1
NC	1,357	1,647	1,536	13.2	-6.7
OH	2,245	2,310	2,136	-4.9	-7.5
OR	1,402	1,703	1,437	2.5	-15.6
PA	3,264	3,659	3,194	-2.1	-12.7
TN	1,552	1,022	1,110	-28.5	8.6
TX	5,359	4,531	4,555	-15.0	0.5
UT	2,666	2,137	1,928	-27.7	-9.8
Oth Sts ²	37,280	40,317	35,722		
US	78,790	85,969	79,131	0.4	-8.0
N Atl	13,749	15,260	11,873	-13.6	-22.2
S Atl	6,179	6,319	5,900	-4.5	-6.6
E N Cen	15,052	17,983	16,231	7.8	-9.7
W N Cen	15,171	13,276	13,676	-9.9	3.0
S Cen	10,703	10,465	9,609	-10.2	-8.2
West	17,936	22,666	21,842	21.8	-3.6

¹ Revised.

² States not shown when fewer than 3 plants reported or individual plant operations could be disclosed. Percent change shown only when comparable States are included in the calculation.

**Canned Milk and Dry Milk Products: Manufacturers' Shipments,
and Stocks, August, 2008-2009**

Product	Aug 2008	Jul 2009 ¹	Aug 2009	Change From	
				Aug 2008	Jul 2009
	<i>1,000 Pounds</i>	<i>1,000 Pounds</i>	<i>1,000 Pounds</i>	<i>Percent</i>	<i>Percent</i>
	Manufacturers' Shipments ²				
Nonfat Dry Milk, Human	98,526	152,021	144,083	46.2	-5.2
	Manufacturers' Stocks End-of-Month ³				
	<i>1,000 Pounds</i>	<i>1,000 Pounds</i>	<i>1,000 Pounds</i>	<i>Percent</i>	<i>Percent</i>
Canned Evaporated and Condensed Whole Milk	92,934	104,945	100,957	8.6	-3.8
Nonfat Dry Milk, Human	171,630	172,766	142,005	-17.3	-17.8
Dry Buttermilk, Total	10,779	5,556	5,024	-53.4	-9.6

¹ Revised.

² For dry products, shipments of bulk goods only.

³ Stocks held by manufacturers at all points and in transit on last day of month.

Procedures and Reliability: Estimates included in this report are based on data provided each month by manufacturers of these products. In 32 States, the State Departments of Agriculture assist in collection of data, which eliminates duplicate reporting and reduces respondent burden. Data are collected by mail, personal and telephone interviews following the close of each month. There were 1,116 manufacturers that made one or more products in 2008. Each month, reports are generally received from all dairy plants in States with small numbers of plants. In States with large numbers of plants, survey procedures are designed to obtain monthly reports from all large plants and from a sample of small plants. Monthly estimates are based upon returns from about 70 percent of the plants which account for 70 to 90 percent of the total production of major dairy products.

Revision Policy: Monthly estimates are subject to revision the month following the preliminary estimates. Annual estimates are published in late April in the "**Dairy Products Yearly Summary**" report which includes any revisions made to current and previous year. An attempt is made to get information from all plants for preparing these estimates.

Information Contacts

Listed below are the commodity specialists in the Livestock Branch of the National Agricultural Statistics Service to contact for additional information.

Dan Kerestes, Chief, Livestock Branch (202) 720-3570

Livestock Section

Scott Hollis, Head, Livestock Section (202) 690-2424
 Jim Collom - Dairy Products (202) 690-3236
 Joe Gaynor - Dairy Products Prices (202) 690-2168
 Jason Hardegree - Cattle, Cattle on Feed (202) 720-3040
 Sherry Bertramsen - Livestock Slaughter (515) 284-4340
 Everett Olbert - Sheep and Goats (202) 720-4751
 Mike Miller - Milk Production and Milk Cows (202) 720-3278
 Nick Streff - Hogs and Pigs (202) 720-3106

ACCESS TO REPORTS!!

For your convenience, there are several ways to obtain NASS reports, data products, and services:

INTERNET ACCESS

All NASS reports are available free of charge. For free access, connect to the Internet and go to the NASS Home Page at: www.nass.usda.gov.

E-MAIL SUBSCRIPTION

All NASS reports are available by subscription free of charge direct to your e-mail address. Starting with the NASS Home Page at www.nass.usda.gov, under the right navigation, *Receive reports by Email*, click on **National** or **State**. Follow the instructions on the screen.

PRINTED REPORTS OR DATA PRODUCTS

CALL OUR TOLL-FREE ORDER DESK: 800-999-6779 (U.S. and Canada)
Other areas, please call 703-605-6220 FAX: 703-605-6900
(Visa, MasterCard, check, or money order acceptable for payment.)

ASSISTANCE

For **assistance** with general agricultural statistics or further information about NASS or its products or services, contact the **Agricultural Statistics Hotline** at **800-727-9540**, 7:30 a.m. to 4:00 p.m. ET, or e-mail: nass@nass.usda.gov.

The U.S. Department of Agriculture (USDA) prohibits discrimination in all its programs and activities on the basis of race, color, national origin, age, disability, and where applicable, sex, marital status, familial status, parental status, religion, sexual orientation, genetic information, political beliefs, reprisal, or because all or a part of an individual's income is derived from any public assistance program. (Not all prohibited bases apply to all programs.) Persons with disabilities who require alternative means for communication of program information (Braille, large print, audiotape, etc.) should contact USDA's TARGET Center at (202) 720-2600 (voice and TDD).

To file a complaint of discrimination, write to USDA, Director, Office of Civil Rights, 1400 Independence Avenue, S.W., Washington, D.C. 20250-9410, or call (800) 795-3272 (voice) or (202) 720-6382 (TDD). USDA is an equal opportunity provider and employer.

**USDA Data Users' Meeting
Monday, November 2, 2009**

**Crowne Plaza Hotel Chicago-Metro
Chicago, Illinois 60661
(312) 829-5000**

The USDA's National Agricultural Statistics Service will be organizing an open forum for data users. The purpose will be to provide updates on pending changes in the various statistical and information programs and seeks comments and input from data users. Other USDA agencies to be represented will include the Agricultural Marketing Service, the Economic Research Service, the Foreign Agricultural Service, and World Agricultural Outlook Board. The Foreign Trade Division from the Census Bureau will also be included in the meeting.

For registration details or additional information for the Data Users' Meeting, see the NASS homepage at www.nass.usda.gov/forum/ or contact Marjorie Taylor (NASS) at (202) 690-8141 or at marjorie_taylor@nass.usda.gov.

This Data Users' Meeting precedes an Industry Outlook Conference that will be held at the same location on Tuesday, November 3, 2009. The Outlook Conference brings together analysts from various commodity sectors to discuss the outlook situation. For registration details or additional information for the Industry Outlook Meeting see the Livestock and Marketing Information Center (LMIC) homepage at www.lmic.info or contact Jim Robb at (720) 544-2941 or at robb@lmic.info.