
Released December 4, 2009, by the National Agricultural Statistics Service (NASS), Agricultural Statistics Board, U.S. Department of Agriculture. For information on *Dairy Products* call Jim Collom at (202) 690-3236, office hours 7:00 a.m. to 3:30 p.m. ET.

October 2009 Highlights

Total cheese output (excluding cottage cheese) was 861 million pounds, 1.3 percent above October 2008 and 2.2 percent above September 2009.

Italian type cheese production totaled 361 million pounds, 3.6 percent above October 2008 and 2.9 percent above September 2009.

American type cheese production totaled 347 million pounds, 1.2 percent above October 2008 and 2.3 percent above September 2009.

Butter production was 112 million pounds, 14.3 percent below October 2008 but 18.3 percent above September 2009.

Dry Milk Powders: (comparisons with October 2008)

Nonfat dry milk, human --- 91.5 million pounds, down 24.4 percent.

Skim milk powders --- 10.2 million pounds, down 42.0 percent.

Whey products: (comparisons with October 2008)

Dry whey, total --- 88.7 million pounds, up 1.1 percent.

Lactose, human and animal --- 64.1 million pounds, up 6.7 percent.

Whey protein concentrate, total --- 35.7 million pounds, down 0.4 percent.

Frozen products: (comparisons with October 2008)

Ice cream, Regular (hard) --- 70.2 million gallons, down 0.7 percent.

Ice cream, Lowfat (total) --- 28.8 million gallons, up 5.6 percent.

Sherbet (hard) --- 3.39 million gallons, down 18.7 percent.

Frozen Yogurt (total) --- 5.18 million gallons, down 3.4 percent.

U. S. Geographic Regions Dairy Products

If a region is unable to be published for confidentiality reasons, it will be combined with other regions when possible. For example, if North Atlantic can not be published, it will be combined with South Atlantic to publish Atlantic. The West North Central and East North Central will be combined, if necessary, to form North Central. In the event that neither could be published, they may be combined with South Central to publish Central. Some tables will have only limited regions shown, therefore the regions may not add to the United States total.



Contents

Page

Dairy Products: Production by Product, United States	1
Whey and Modified Whey Products: Production, Stocks, and Prices, United States	2
Dairy Products: Production by Product and Month, United States	3
Select Commodities by State and United States	10
Canned Milk and Dry Milk Products: Manufacturers' Shipments and Stocks	15
Procedures and Reliability	16
Information Contacts	16

**Dairy Products: Production by Product,
United States, October, 2008-2009**

Product	Oct 2008	Sep 2009 ¹	Oct 2009	Change From	
				Oct 2008	Sep 2009
	<i>1,000 Pounds</i>	<i>1,000 Pounds</i>	<i>1,000 Pounds</i>	<i>Percent</i>	<i>Percent</i>
Butter	130,633	94,570	111,918	-14.3	18.3
Cheese					
American Types ²	343,192	339,240	347,169	1.2	2.3
Cheddar	255,411	255,391	261,009	2.2	2.2
Other American	87,781	83,849	86,160	-1.8	2.8
Swiss	26,295	25,237	26,260	-0.1	4.1
Brick and Muenster	10,714	10,396	11,449	6.9	10.1
Cream and Neufchatel	80,015	76,402	77,205	-3.5	1.1
Hispanic	17,044	17,321	16,299	-4.4	-5.9
Italian Types	348,051	350,437	360,591	3.6	2.9
Mozzarella	266,114	272,320	279,918	5.2	2.8
Other Italian	81,937	78,117	80,673	-1.5	3.3
All Other Types	24,892	23,967	22,219	-10.7	-7.3
Total Cheese	850,203	843,000	861,192	1.3	2.2
Cottage Cheese, Curd ³	36,294	40,101	37,233	2.6	-7.2
Cottage Cheese, Cream ⁴	27,480	31,618	27,959	1.7	-11.6
Cottage Cheese, Lowfat ⁵	32,767	34,893	33,905	3.5	-2.8
Canned Evaporated and Condensed Whole Milk	58,923	47,969	51,721	-12.2	7.8
Dry Whole Milk	4,941	4,130	4,501	-8.9	9.0
Nonfat Dry Milk, Human Skim Milk Powders ⁶	121,071	86,643	91,524	-24.4	5.6
Dry Skim Milk, Animal	17,556	12,585	10,174	-42.0	-19.2
Dry Buttermilk	541	466	432	-20.1	-7.3
Sour Cream	6,323	5,313	5,992	-5.2	12.8
Yogurt, Plain & Flavored	102,046	92,966	108,467	6.3	16.7
	301,458	371,321	314,524	4.3	-15.3
	<i>1,000 Gallons</i>	<i>1,000 Gallons</i>	<i>1,000 Gallons</i>	<i>Percent</i>	<i>Percent</i>
Frozen Products					
Ice Cream, Regular, Hard	70,723	74,394	70,220	-0.7	-5.6
Ice Cream, Lowfat, Hard	9,722	11,311	10,860	11.7	-4.0
Ice Cream, Lowfat, Soft	17,569	19,858	17,955	2.2	-9.6
Ice Cream, Lowfat, Total	27,291	31,169	28,815	5.6	-7.6
Ice Cream, Nonfat, Hard	1,091	1,133	899	-17.6	-20.7
Sherbet, Hard	4,176	4,376	3,394	-18.7	-22.4
Water and Juice Ices	3,649	4,219	3,918	7.4	-7.1
Frozen Yogurt, Total	5,359	5,810	5,179	-3.4	-10.9
Regular & Lowfat, Hard	1,679	1,507	1,444	-14.0	-4.2
Nonfat, Hard	654	522	530	-19.0	1.5
Other Frozen Dairy Products	867	1,432	945	9.0	-34.0
Mix for Frozen Products					
Ice Cream Mix	37,791	40,385	37,751	-0.1	-6.5
Ice Cream, Lowfat, Mix	15,748	17,844	16,467	4.6	-7.7
Ice Cream, Nonfat, Mix	653	670	547	-16.2	-18.4
Sherbet Mix	2,711	2,724	2,148	-20.8	-21.1
Yogurt Mix	3,136	3,521	3,139	0.1	-10.8

¹ Revised.

² Includes Cheddar, Colby, Monterey, and Jack.

³ Mostly used for processing into cream or lowfat cottage cheese.

⁴ Fat content 4 percent or more.

⁵ Fat content less than 4 percent.

⁶ Includes protein standardized and blends.

⁷ Dry milk protein concentrate 40-89.9 percent protein.

**Whey and Modified Whey Products: Production, Stocks,
and Prices, United States, October, 2008-2009**

Product	Oct 2008	Sep 2009 ¹	Oct 2009	Change From	
				Oct 2008	Sep 2009
	Production				
	<i>1,000 Pounds</i>	<i>1,000 Pounds</i>	<i>1,000 Pounds</i>	<i>Percent</i>	<i>Percent</i>
Condensed Whey, Solids Content ²					
Sweet-Type, Human	8,602	7,240	7,615	-11.5	5.2
Dry Whey Products					
Dry Whey, Human	83,714	83,837	84,498	0.9	0.8
Dry Whey, Animal	3,994	2,971	4,175	4.5	40.5
Dry Whey, Total	87,708	86,808	88,673	1.1	2.1
Reduced Lactose and Minerals					
Human Food	2,962	2,488	2,956	-0.2	18.8
Animal Feed	4,455	4,094	4,359	-2.2	6.5
Lactose, Human and Animal	60,005	58,916	64,052	6.7	8.7
Whey					
Protein Concentrate					
Human ³	32,514	30,774	32,720	0.6	6.3
Animal ³	3,316	3,814	2,952	-11.0	-22.6
Total ³	35,830	34,588	35,672	-0.4	3.1
25.0-49.9 Percent ⁴	23,847	21,170	20,914	-12.3	-1.2
50.0-89.9 Percent ⁴	11,983	13,418	14,758	23.2	10.0
Protein Isolates ⁵	4,490	4,644	4,689	4.4	1.0
	Manufacturers' Stocks End-of-Month ⁶				
	<i>1,000 Pounds</i>	<i>1,000 Pounds</i>	<i>1,000 Pounds</i>	<i>Percent</i>	<i>Percent</i>
Dry Whey Products					
Dry Whey, Human	58,060	48,721	44,045	-24.1	-9.6
Dry Whey, Animal	4,887	2,115	1,549	-68.3	-26.8
Dry Whey, Total	62,947	50,836	45,594	-27.6	-10.3
Reduced Lactose and Minerals					
Human and Animal ⁷	18,697	13,518	11,972	-36.0	-11.4
Lactose, Human and Animal	95,607	53,221	53,976	-43.5	1.4
Whey					
Protein Concentrate					
Human ³	31,366	36,775	33,626	7.2	-8.6
Animal ³	1,026	2,311	1,887	83.9	-18.3
Total ³	32,392	39,086	35,513	9.6	-9.1
25.0-49.9 Percent ⁴	19,246	24,693	21,672	12.6	-12.2
50.0-89.9 Percent ⁴	13,146	14,393	13,841	5.3	-3.8
	Manufacturers' Selling Price ⁸				
	<i>Cents per Pound</i>	<i>Cents per Pound</i>	<i>Cents per Pound</i>	<i>Cents Change</i>	<i>Cents Change</i>
Dry Whey, Animal	15.7	27.4	27.1	11.4	-0.3

¹ Revised.

² Final marketable product only. Does not include quantity used or shipped to another plant for further processing into dry whey or modified whey products. Does not include sweet-type, animal whey.

³ Whey Protein Concentrate, 25.0 to 89.9 percent.

⁴ Whey Protein Concentrate, Human and Animal.

⁵ Whey Protein Isolate, 90.0 percent or greater.

⁶ Stocks held by manufacturers at all points and in transit.

⁷ Reduced lactose and minerals stocks combined to avoid disclosure of individual operations.

⁸ Prices for bulk goods, f.o.b. plant. Average monthly prices reported by firms.

**Dairy Products: Production by Product and Month,
United States, 2008-2009 ¹**

Product and Month	By Month			Cumulative		
	2008	2009	Change From 2008	2008	2009	Change From 2008
	<i>1,000 Pounds</i>	<i>1,000 Pounds</i>	<i>Percent</i>	<i>1,000 Pounds</i>	<i>1,000 Pounds</i>	<i>Percent</i>
Total Cheese						
Jan	821,181	823,961	0.3	821,181	823,961	0.3
Feb	792,408	769,821	-2.9	1,613,589	1,593,782	-1.2
Mar	843,830	870,828	3.2	2,457,419	2,464,610	0.3
Apr	820,401	845,270	3.0	3,277,820	3,309,880	1.0
May	838,551	859,675	2.5	4,116,371	4,169,555	1.3
Jun	816,225	834,177	2.2	4,932,596	5,003,732	1.4
Jul	822,182	841,264	2.3	5,754,778	5,844,996	1.6
Aug	828,318	849,296	2.5	6,583,096	6,694,292	1.7
Sep	809,580	843,000	4.1	7,392,676	7,537,292	2.0
Oct	850,203	861,192	1.3	8,242,879	8,398,484	1.9
Nov	828,591			9,071,470		
Dec	863,060			9,934,530		
American Cheese						
Jan	336,700	353,224	4.9	336,700	353,224	4.9
Feb	321,479	320,751	-0.2	658,179	673,975	2.4
Mar	340,830	359,029	5.3	999,009	1,033,004	3.4
Apr	340,115	351,162	3.2	1,339,124	1,384,166	3.4
May	352,587	366,464	3.9	1,691,711	1,750,630	3.5
Jun	336,745	353,396	4.9	2,028,456	2,104,026	3.7
Jul	341,914	352,424	3.1	2,370,370	2,456,450	3.6
Aug	339,841	345,181	1.6	2,710,211	2,801,631	3.4
Sep	320,793	339,240	5.8	3,031,004	3,140,871	3.6
Oct	343,192	347,169	1.2	3,374,196	3,488,040	3.4
Nov	338,220			3,712,416		
Dec	358,878			4,071,294		
Cheddar Cheese						
Jan	264,585	274,091	3.6	264,585	274,091	3.6
Feb	253,176	241,474	-4.6	517,761	515,565	-0.4
Mar	268,179	273,581	2.0	785,940	789,146	0.4
Apr	270,445	268,897	-0.6	1,056,385	1,058,043	0.2
May	274,765	285,473	3.9	1,331,150	1,343,516	0.9
Jun	260,962	272,996	4.6	1,592,112	1,616,512	1.5
Jul	265,249	267,125	0.7	1,857,361	1,883,637	1.4
Aug	257,249	262,790	2.2	2,114,610	2,146,427	1.5
Sep	238,336	255,391	7.2	2,352,946	2,401,818	2.1
Oct	255,411	261,009	2.2	2,608,357	2,662,827	2.1
Nov	257,466			2,865,823		
Dec	283,307			3,149,130		

See footnote(s) at end of table.

--continued

**Dairy Products: Production by Product and Month,
United States, 2008-2009 ¹ (continued)**

Product and Month	By Month			Cumulative		
	2008	2009	Change From 2008	2008	2009	Change From 2008
	<i>1,000 Pounds</i>	<i>1,000 Pounds</i>	<i>Percent</i>	<i>1,000 Pounds</i>	<i>1,000 Pounds</i>	<i>Percent</i>
Italian Cheese						
Jan	355,109	347,897	-2.0	355,109	347,897	-2.0
Feb	339,375	319,870	-5.7	694,484	667,767	-3.8
Mar	363,145	362,867	-0.1	1,057,629	1,030,634	-2.6
Apr	349,049	350,267	0.3	1,406,678	1,380,901	-1.8
May	349,033	349,963	0.3	1,755,711	1,730,864	-1.4
Jun	336,646	344,448	2.3	2,092,357	2,075,312	-0.8
Jul	337,254	349,291	3.6	2,429,611	2,424,603	-0.2
Aug	336,569	349,696	3.9	2,766,180	2,774,299	0.3
Sep	339,473	350,437	3.2	3,105,653	3,124,736	0.6
Oct	348,051	360,591	3.6	3,453,704	3,485,327	0.9
Nov	340,383			3,794,087		
Dec	363,941			4,158,028		
Mozzarella						
Jan	282,325	268,056	-5.1	282,325	268,056	-5.1
Feb	267,174	247,418	-7.4	549,499	515,474	-6.2
Mar	288,152	281,087	-2.5	837,651	796,561	-4.9
Apr	275,693	272,270	-1.2	1,113,344	1,068,831	-4.0
May	273,126	273,405	0.1	1,386,470	1,342,236	-3.2
Jun	262,443	269,830	2.8	1,648,913	1,612,066	-2.2
Jul	261,510	275,051	5.2	1,910,423	1,887,117	-1.2
Aug	260,268	274,368	5.4	2,170,691	2,161,485	-0.4
Sep	260,972	272,320	4.3	2,431,663	2,433,805	0.1
Oct	266,114	279,918	5.2	2,697,777	2,713,723	0.6
Nov	261,641			2,959,418		
Dec	279,973			3,239,391		
Other Italian						
Jan	72,784	79,841	9.7	72,784	79,841	9.7
Feb	72,201	72,452	0.3	144,985	152,293	5.0
Mar	74,993	81,780	9.1	219,978	234,073	6.4
Apr	73,356	77,997	6.3	293,334	312,070	6.4
May	75,907	76,558	0.9	369,241	388,628	5.3
Jun	74,203	74,618	0.6	443,444	463,246	4.5
Jul	75,744	74,240	-2.0	519,188	537,486	3.5
Aug	76,301	75,328	-1.3	595,489	612,814	2.9
Sep	78,501	78,117	-0.5	673,990	690,931	2.5
Oct	81,937	80,673	-1.5	755,927	771,604	2.1
Nov	78,742			834,669		
Dec	83,968			918,637		

See footnote(s) at end of table.

--continued

**Dairy Products: Production by Product and Month,
United States, 2008-2009 ¹ (continued)**

Product and Month	By Month			Cumulative		
	2008	2009	Change From 2008	2008	2009	Change From 2008
	<i>1,000 Pounds</i>	<i>1,000 Pounds</i>	<i>Percent</i>	<i>1,000 Pounds</i>	<i>1,000 Pounds</i>	<i>Percent</i>
Butter						
Jan	169,218	174,684	3.2	169,218	174,684	3.2
Feb	146,737	145,687	-0.7	315,955	320,371	1.4
Mar	149,851	147,245	-1.7	465,806	467,616	0.4
Apr	149,984	142,509	-5.0	615,790	610,125	-0.9
May	139,858	139,373	-0.3	755,648	749,498	-0.8
Jun	116,713	125,497	7.5	872,361	874,995	0.3
Jul	114,185	114,293	0.1	986,546	989,288	0.3
Aug	115,939	100,854	-13.0	1,102,485	1,090,142	-1.1
Sep	121,035	94,570	-21.9	1,223,520	1,184,712	-3.2
Oct	130,633	111,918	-14.3	1,354,153	1,296,630	-4.2
Nov	133,586			1,487,739		
Dec	156,339			1,644,078		
Nonfat Dry Milk, Human						
Jan	112,970	154,812	37.0	112,970	154,812	37.0
Feb	121,107	122,812	1.4	234,077	277,624	18.6
Mar	136,993	135,277	-1.3	371,070	412,901	11.3
Apr	134,861	138,529	2.7	505,931	551,430	9.0
May	131,607	149,218	13.4	637,538	700,648	9.9
Jun	135,979	144,141	6.0	773,517	844,789	9.2
Jul	134,875	131,963	-2.2	908,392	976,752	7.5
Aug	115,205	105,750	-8.2	1,023,597	1,082,502	5.8
Sep	85,541	86,643	1.3	1,109,138	1,169,145	5.4
Oct	121,071	91,524	-24.4	1,230,209	1,260,669	2.5
Nov	133,702			1,363,911		
Dec	155,262			1,519,173		
Skim Milk Powders ²						
Jan	45,614	17,663	-61.3	45,614	17,663	-61.3
Feb	33,804	22,693	-32.9	79,418	40,356	-49.2
Mar	34,428	24,432	-29.0	113,846	64,788	-43.1
Apr	36,137	24,645	-31.8	149,983	89,433	-40.4
May	45,511	26,731	-41.3	195,494	116,164	-40.6
Jun	33,873	16,796	-50.4	229,367	132,960	-42.0
Jul	27,120	14,023	-48.3	256,487	146,983	-42.7
Aug	26,649	10,677	-59.9	283,136	157,660	-44.3
Sep	38,868	12,585	-67.6	322,004	170,245	-47.1
Oct	17,556	10,174	-42.0	339,560	180,419	-46.9
Nov	16,477			356,037		
Dec	17,793			373,830		

See footnote(s) at end of table.

--continued

**Dairy Products: Production by Product and Month,
United States, 2008-2009 ¹ (continued)**

Product and Month	By Month			Cumulative		
	2008	2009	Change From 2008	2008	2009	Change From 2008
	<i>1,000 Pounds</i>	<i>1,000 Pounds</i>	<i>Percent</i>	<i>1,000 Pounds</i>	<i>1,000 Pounds</i>	<i>Percent</i>
Dry Whey, Total ³						
Jan	93,939	88,464	-5.8	93,939	88,464	-5.8
Feb	89,200	82,869	-7.1	183,139	171,333	-6.4
Mar	99,767	92,213	-7.6	282,906	263,546	-6.8
Apr	98,668	92,690	-6.1	381,574	356,236	-6.6
May	99,025	93,861	-5.2	480,599	450,097	-6.3
Jun	95,045	93,327	-1.8	575,644	543,424	-5.6
Jul	91,512	94,085	2.8	667,156	637,509	-4.4
Aug	89,253	92,091	3.2	756,409	729,600	-3.5
Sep	85,891	86,808	1.1	842,300	816,408	-3.1
Oct	87,708	88,673	1.1	930,008	905,081	-2.7
Nov	86,416			1,016,424		
Dec	91,115			1,107,539		
Lactose, Human and Animal						
Jan	62,275	59,807	-4.0	62,275	59,807	-4.0
Feb	60,504	51,610	-14.7	122,779	111,417	-9.3
Mar	64,289	59,224	-7.9	187,068	170,641	-8.8
Apr	63,817	58,491	-8.3	250,885	229,132	-8.7
May	65,588	59,991	-8.5	316,473	289,123	-8.6
Jun	63,383	60,090	-5.2	379,856	349,213	-8.1
Jul	65,229	61,223	-6.1	445,085	410,436	-7.8
Aug	63,488	62,281	-1.9	508,573	472,717	-7.1
Sep	58,834	58,916	0.1	567,407	531,633	-6.3
Oct	60,005	64,052	6.7	627,412	595,685	-5.1
Nov	57,454			684,866		
Dec	60,429			745,295		
Whey Protein Concentrate, Total						
Jan	35,241	34,185	-3.0	35,241	34,185	-3.0
Feb	33,598	31,243	-7.0	68,839	65,428	-5.0
Mar	36,552	33,840	-7.4	105,391	99,268	-5.8
Apr	36,286	31,888	-12.1	141,677	131,156	-7.4
May	37,046	34,781	-6.1	178,723	165,937	-7.2
Jun	34,571	33,832	-2.1	213,294	199,769	-6.3
Jul	36,787	34,349	-6.6	250,081	234,118	-6.4
Aug	34,822	35,437	1.8	284,903	269,555	-5.4
Sep	33,081	34,588	4.6	317,984	304,143	-4.4
Oct	35,830	35,672	-0.4	353,814	339,815	-4.0
Nov	33,805			387,619		
Dec	36,028			423,647		

See footnote(s) at end of table.

--continued

**Dairy Products: Production by Product and Month,
United States, 2008-2009 ¹ (continued)**

Product and Month	By Month			Cumulative		
	2008	2009	Change From 2008	2008	2009	Change From 2008
	<i>1,000 Pounds</i>	<i>1,000 Pounds</i>	<i>Percent</i>	<i>1,000 Pounds</i>	<i>1,000 Pounds</i>	<i>Percent</i>
Cream Cottage Cheese						
Jan	26,831	26,400	-1.6	26,831	26,400	-1.6
Feb	25,187	26,713	6.1	52,018	53,113	2.1
Mar	27,822	30,807	10.7	79,840	83,920	5.1
Apr	26,229	31,287	19.3	106,069	115,207	8.6
May	28,849	31,721	10.0	134,918	146,928	8.9
Jun	27,000	30,581	13.3	161,918	177,509	9.6
Jul	28,930	31,733	9.7	190,848	209,242	9.6
Aug	29,119	31,262	7.4	219,967	240,504	9.3
Sep	28,487	31,618	11.0	248,454	272,122	9.5
Oct	27,480	27,959	1.7	275,934	300,081	8.8
Nov	24,163			300,097		
Dec	25,724			325,821		
Lowfat Cottage Cheese						
Jan	33,057	30,915	-6.5	33,057	30,915	-6.5
Feb	31,451	30,933	-1.6	64,508	61,848	-4.1
Mar	32,973	34,563	4.8	97,481	96,411	-1.1
Apr	33,773	34,652	2.6	131,254	131,063	-0.1
May	35,483	32,932	-7.2	166,737	163,995	-1.6
Jun	32,074	33,241	3.6	198,811	197,236	-0.8
Jul	33,416	35,028	4.8	232,227	232,264	
Aug	33,587	33,373	-0.6	265,814	265,637	-0.1
Sep	34,019	34,893	2.6	299,833	300,530	0.2
Oct	32,767	33,905	3.5	332,600	334,435	0.6
Nov	27,098			359,698		
Dec	29,935			389,633		
Sour Cream						
Jan	92,190	86,957	-5.7	92,190	86,957	-5.7
Feb	81,494	81,338	-0.2	173,684	168,295	-3.1
Mar	93,193	97,476	4.6	266,877	265,771	-0.4
Apr	84,041	92,823	10.4	350,918	358,594	2.2
May	97,322	94,799	-2.6	448,240	453,393	1.1
Jun	90,846	95,144	4.7	539,086	548,537	1.8
Jul	91,042	93,361	2.5	630,128	641,898	1.9
Aug	94,794	93,997	-0.8	724,922	735,895	1.5
Sep	88,541	92,966	5.0	813,463	828,861	1.9
Oct	102,046	108,467	6.3	915,509	937,328	2.4
Nov	105,245			1,020,754		
Dec	106,325			1,127,079		

See footnote(s) at end of table.

--continued

**Dairy Products: Production by Product and Month,
United States, 2008-2009¹ (continued)**

Product and Month	By Month			Cumulative		
	2008	2009	Change From 2008	2008	2009	Change From 2008
	<i>1,000 Gallons</i>	<i>1,000 Gallons</i>	<i>Percent</i>	<i>1,000 Gallons</i>	<i>1,000 Gallons</i>	<i>Percent</i>
Ice Cream, Regular, Hard						
Jan	62,898	57,527	-8.5	62,898	57,527	-8.5
Feb	66,569	63,608	-4.4	129,467	121,135	-6.4
Mar	75,908	76,124	0.3	205,375	197,259	-4.0
Apr	77,122	79,517	3.1	282,497	276,776	-2.0
May	81,171	80,636	-0.7	363,668	357,412	-1.7
Jun	91,952	89,918	-2.2	455,620	447,330	-1.8
Jul	84,717	85,969	1.5	540,337	533,299	-1.3
Aug	78,790	79,140	0.4	619,127	612,439	-1.1
Sep	75,864	74,394	-1.9	694,991	686,833	-1.2
Oct	70,723	70,220	-0.7	765,714	757,053	-1.1
Nov	61,466			827,180		
Dec	53,734			880,914		
Ice Cream, Lowfat, Total						
Jan	25,673	23,788	-7.3	25,673	23,788	-7.3
Feb	27,723	26,518	-4.3	53,396	50,306	-5.8
Mar	32,192	35,860	11.4	85,588	86,166	0.7
Apr	36,386	35,182	-3.3	121,974	121,348	-0.5
May	37,585	36,512	-2.9	159,559	157,860	-1.1
Jun	41,838	42,240	1.0	201,397	200,100	-0.6
Jul	38,853	39,715	2.2	240,250	239,815	-0.2
Aug	36,122	36,559	1.2	276,372	276,374	
Sep	29,976	31,169	4.0	306,348	307,543	0.4
Oct	27,291	28,815	5.6	333,639	336,358	0.8
Nov	21,789			355,428		
Dec	21,794			377,222		
Sherbet, Hard						
Jan	3,935	3,552	-9.7	3,935	3,552	-9.7
Feb	4,060	3,980	-2.0	7,995	7,532	-5.8
Mar	5,358	5,090	-5.0	13,353	12,622	-5.5
Apr	5,536	5,106	-7.8	18,889	17,728	-6.1
May	5,448	4,989	-8.4	24,337	22,717	-6.7
Jun	5,546	5,517	-0.5	29,883	28,234	-5.5
Jul	5,189	5,018	-3.3	35,072	33,252	-5.2
Aug	4,523	4,265	-5.7	39,595	37,517	-5.2
Sep	4,646	4,376	-5.8	44,241	41,893	-5.3
Oct	4,176	3,394	-18.7	48,417	45,287	-6.5
Nov	3,424			51,841		
Dec	3,442			55,283		

See footnote(s) at end of table.

--continued

**Dairy Products: Production by Product and Month,
United States, 2008-2009 ¹ (continued)**

Product and Month	By Month			Cumulative		
	2008	2009	Change From 2008	2008	2009	Change From 2008
	<i>1,000 Pounds</i>	<i>1,000 Pounds</i>	<i>Percent</i>	<i>1,000 Pounds</i>	<i>1,000 Pounds</i>	<i>Percent</i>
Yogurt, Plain & Flavored						
Jan	301,753	306,406	1.5	301,753	306,406	1.5
Feb	303,873	313,949	3.3	605,626	620,355	2.4
Mar	330,037	365,333	10.7	935,663	985,688	5.3
Apr	301,550	323,716	7.4	1,237,213	1,309,404	5.8
May	309,007	325,561	5.4	1,546,220	1,634,965	5.7
Jun	297,939	334,486	12.3	1,844,159	1,969,451	6.8
Jul	287,147	304,189	5.9	2,131,306	2,273,640	6.7
Aug	304,917	328,922	7.9	2,436,223	2,602,562	6.8
Sep	331,046	371,321	12.2	2,767,269	2,973,883	7.5
Oct	301,458	314,524	4.3	3,068,727	3,288,407	7.2
Nov	243,349			3,312,076		
Dec	287,183			3,599,259		
	<i>1,000 Gallons</i>	<i>1,000 Gallons</i>	<i>Percent</i>	<i>1,000 Gallons</i>	<i>1,000 Gallons</i>	<i>Percent</i>
Yogurt, Frozen						
Jan	5,419	3,430	-36.7	5,419	3,430	-36.7
Feb	5,716	4,752	-16.9	11,135	8,182	-26.5
Mar	7,237	6,161	-14.9	18,372	14,343	-21.9
Apr	7,400	6,077	-17.9	25,772	20,420	-20.8
May	7,576	5,966	-21.3	33,348	26,386	-20.9
Jun	7,493	6,744	-10.0	40,841	33,130	-18.9
Jul	6,977	7,083	1.5	47,818	40,213	-15.9
Aug	6,359	6,711	5.5	54,177	46,924	-13.4
Sep	5,782	5,810	0.5	59,959	52,734	-12.0
Oct	5,359	5,179	-3.4	65,318	57,913	-11.3
Nov	4,431			69,749		
Dec	4,393			74,142		

¹ September 2009 data revised.

² Includes protein standardized and blends.

³ Excludes all modified dry whey products.

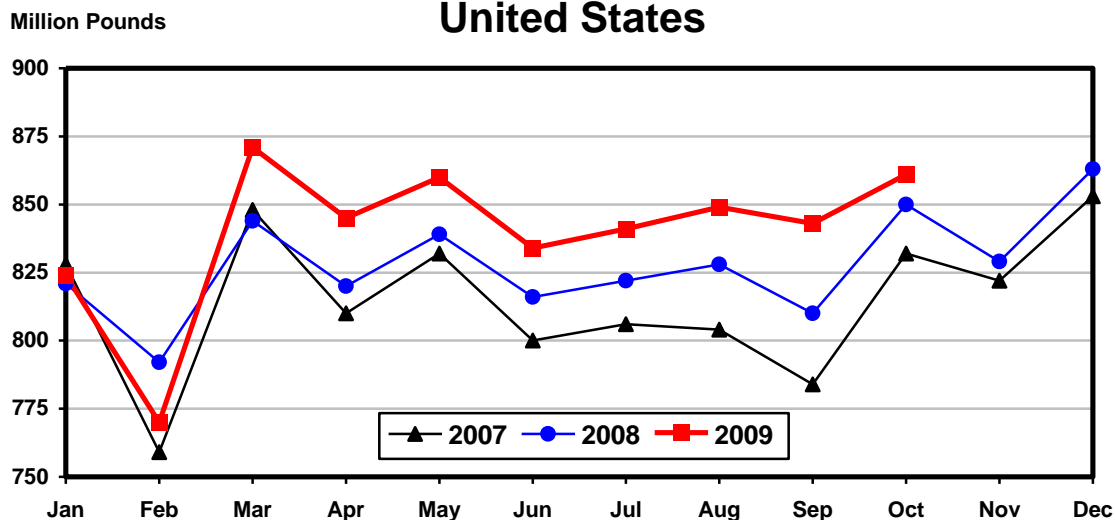
Total Cheese, Excluding Cottage Cheese: Production by State and United States, October 2008-2009

State	Oct 2008	Sep ¹ 2009	Oct 2009	Change From	
				Oct 2008	Sep 2009
	<i>1,000 Pounds</i>	<i>1,000 Pounds</i>	<i>1,000 Pounds</i>	<i>Percent</i>	<i>Percent</i>
CA	177,018	167,724	174,884	-1.2	4.3
ID	68,199	67,609	68,995	1.2	2.1
IL	6,294	6,234	6,097	-3.1	-2.2
IA	13,628	18,662	20,239	48.5	8.5
MN	53,467	51,583	53,508	0.1	3.7
NJ	2,990	3,222	2,885	-3.5	-10.5
NM	50,445	51,394	53,117	5.3	3.4
NY	66,530	63,409	66,996	0.7	5.7
OH	15,550	16,606	17,184	10.5	3.5
PA	31,531	34,756	32,844	4.2	-5.5
SD	19,984	18,153	20,306	1.6	11.9
UT	9,764	10,759	9,757	-0.1	-9.3
VT	10,927	9,710	11,232	2.8	15.7
WI	221,562	224,157	223,686	1.0	-0.2
Oth Sts ²	102,314	99,022	99,462	-2.8	0.4
US	850,203	843,000	861,192	1.3	2.2
Atlantic	120,432	118,882	120,749	0.3	1.6
Central	375,920	379,456	386,128	2.7	1.8
West	353,851	344,662	354,315	0.1	2.8

¹ Revised.

² States not shown when fewer than 3 plants reported or individual plant operations could be disclosed. Percent change shown only when comparable States are included in the calculation.

**Total Cheese Production
United States**



American Cheese: Production by State and United States, October 2008-2009

State	Oct 2008	Sep ¹ 2009	Oct 2009	Change From	
				Oct 2008	Sep 2009
	<i>1,000 Pounds</i>	<i>1,000 Pounds</i>	<i>1,000 Pounds</i>	<i>Percent</i>	<i>Percent</i>
CA	57,346	51,036	53,417	-6.9	4.7
ID	53,467	53,938	55,032	2.9	2.0
IA	11,281	14,357	16,449	45.8	14.6
OH	622	978	911	46.5	-6.9
OR	14,706	14,897	14,929	1.5	0.2
WI	69,456	69,961	71,500	2.9	2.2
Oth Sts ²	136,314	134,073	134,931	-1.0	0.6
US	343,192	339,240	347,169	1.2	2.3
Atlantic	12,598	9,804	12,186	-3.3	24.3
Central	155,155	160,969	165,892	6.9	3.1
West	175,439	168,467	169,091	-3.6	0.4

¹ Revised.

² States not shown when fewer than 3 plants reported or individual plant operations could be disclosed. Percent change shown only when comparable States are included in the calculation.

Cheddar Cheese: Production by State and United States, October 2008-2009

State	Oct 2008	Sep ¹ 2009	Oct 2009	Change From	
				Oct 2008	Sep 2009
	<i>1,000 Pounds</i>	<i>1,000 Pounds</i>	<i>1,000 Pounds</i>	<i>Percent</i>	<i>Percent</i>
CA	30,213	28,511	29,778	-1.4	4.4
ID	42,166	44,679	46,048	9.2	3.1
IA	8,028	8,793	10,246	27.6	16.5
MN	43,334	40,421	42,480	-2.0	5.1
OH	382	734	637	66.8	-13.2
WI	52,422	53,761	54,600	4.2	1.6
Oth Sts ²	78,866	78,492	77,220	-2.1	-1.6
US	255,411	255,391	261,009	2.2	2.2
Atlantic	12,158	9,412	11,845	-2.6	25.8
Central	121,872	125,639	128,450	5.4	2.2
West	121,381	120,340	120,714	-0.5	0.3

¹ Revised.

² States not shown when fewer than 3 plants reported or individual plant operations could be disclosed. Percent change shown only when comparable States are included in the calculation.

Italian Cheese, Total: Production by State and United States, October 2008-2009

State	Oct 2008	Sep ¹ 2009	Oct 2009	Change From	
				Oct 2008	Sep 2009
	<i>1,000 Pounds</i>	<i>1,000 Pounds</i>	<i>1,000 Pounds</i>	<i>Percent</i>	<i>Percent</i>
CA	103,831	102,436	107,845	3.9	5.3
NY	34,098	32,723	32,087	-5.9	-1.9
PA	17,358	19,302	20,717	19.4	7.3
WI	100,033	104,379	103,251	3.2	-1.1
Oth Sts ²	92,731	91,597	96,691	4.3	5.6
US	348,051	350,437	360,591	3.6	2.9
Atlantic	62,118	63,316	62,223	0.2	-1.7
Central	134,912	137,806	139,261	3.2	1.1
West	151,021	149,315	159,107	5.4	6.6

¹ Revised.

² States not shown when fewer than 3 plants reported or individual plant operations could be disclosed. Percent change shown only when comparable States are included in the calculation.

Mozzarella Cheese: Production by State and United States, October 2008-2009

State	Oct 2008	Sep ¹ 2009	Oct 2009	Change From	
				Oct 2008	Sep 2009
	<i>1,000 Pounds</i>	<i>1,000 Pounds</i>	<i>1,000 Pounds</i>	<i>Percent</i>	<i>Percent</i>
CA	92,802	91,787	96,965	4.5	5.6
NY	15,873	16,606	16,006	0.8	-3.6
WI	69,651	74,764	70,875	1.8	-5.2
Oth Sts ²	87,788	89,163	96,072	9.4	7.7
US	266,114	272,320	279,918	5.2	2.8
Atlantic	35,905	39,642	38,966	8.5	-1.7
Central	93,067	96,850	95,634	2.8	-1.3
West	137,142	135,828	145,318	6.0	7.0

¹ Revised.

² States not shown when fewer than 3 plants reported or individual plant operations could be disclosed. Percent change shown only when comparable States are included in the calculation.

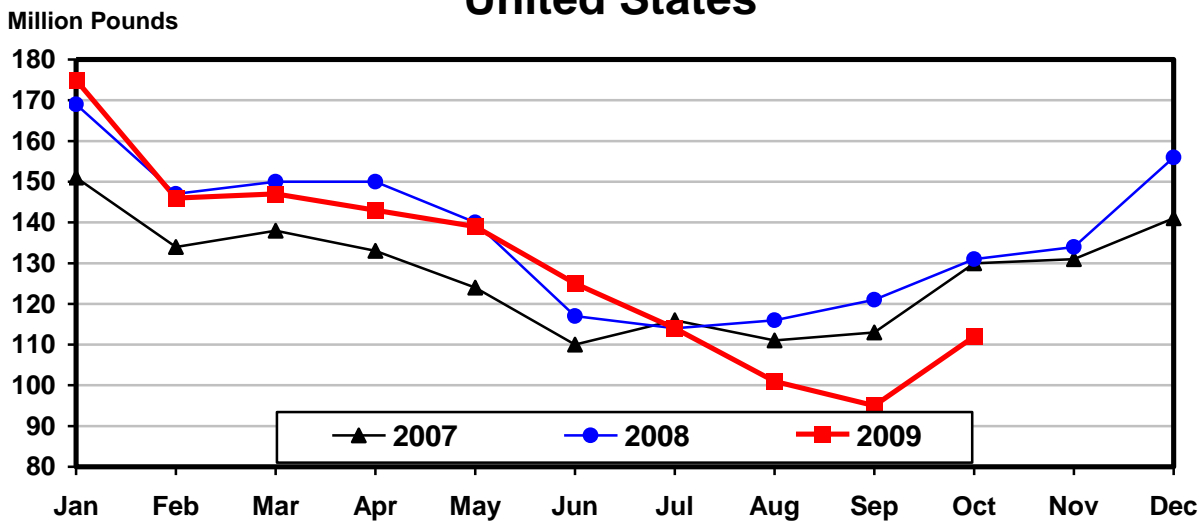
Butter: Production by State and United States, October 2008-2009

State	Oct 2008	Sep ¹ 2009	Oct 2009	Change From	
				Oct 2008	Sep 2009
	<i>1,000 Pounds</i>	<i>1,000 Pounds</i>	<i>1,000 Pounds</i>	<i>Percent</i>	<i>Percent</i>
CA	44,401	36,732	41,864	-5.7	14.0
PA	4,370	5,845	5,648	29.2	-3.4
WI	30,274				
Oth Sts ²	51,588	51,993	64,406		
US	130,633	94,570	111,918	-14.3	18.3
Atlantic	8,184	8,919	8,862	8.3	-0.6
Central	54,860	30,928	41,670	-24.0	34.7
West	67,589	54,723	61,386	-9.2	12.2

¹ Revised.

² States not shown when fewer than 3 plants reported or individual plant operations could be disclosed. Percent change shown only when comparable States are included in the calculation.

Total Butter Production United States



**Nonfat Dry Milk, Human: Production by State
and United States, October 2008-2009**

State	Oct 2008	Sep ¹ 2009	Oct 2009	Change From	
				Oct 2008	Sep 2009
	<i>1,000 Pounds</i>	<i>1,000 Pounds</i>	<i>1,000 Pounds</i>	<i>Percent</i>	<i>Percent</i>
CA	74,872	57,666	63,174	-15.6	9.6
Oth Sts ²	46,199	28,977	28,350	-38.6	-2.2
US	121,071	86,643	91,524	-24.4	5.6
Atlantic	13,036	8,040	5,299	-59.4	-34.1
Central	8,977	6,762	5,627	-37.3	-16.8
West	99,058	71,841	80,598	-18.6	12.2

¹ Revised.

² States not shown when fewer than 3 plants reported or individual plant operations could be disclosed. Percent change shown only when comparable States are included in the calculation.

**Dry Whey, Human: Production by State
and United States, October 2008-2009**

State	Oct 2008	Sep ¹ 2009	Oct 2009	Change From	
				Oct 2008	Sep 2009
	<i>1,000 Pounds</i>	<i>1,000 Pounds</i>	<i>1,000 Pounds</i>	<i>Percent</i>	<i>Percent</i>
NY	10,594	10,900	10,478	-1.1	-3.9
WI	23,695	24,071	24,300	2.6	1.0
Oth Sts ²	49,425	48,866	49,720	0.6	1.7
US	83,714	83,837	84,498	0.9	0.8
Atlantic	18,386	18,969	19,021	3.5	0.3
Central	37,060	37,765	38,205	3.1	1.2
West	28,268	27,103	27,272	-3.5	0.6

¹ Revised.

² States not shown when fewer than 3 plants reported or individual plant operations could be disclosed. Percent change shown only when comparable States are included in the calculation.

**Ice Cream, Regular, Hard: Production by State and United States,
October 2008-2009**

State	Oct 2008	Sep ¹ 2009	Oct 2009	Change From	
				Oct 2008	Sep 2009
	<i>1,000 Gallons</i>	<i>1,000 Gallons</i>	<i>1,000 Gallons</i>	<i>Percent</i>	<i>Percent</i>
CA	9,979	13,587	12,439	24.7	-8.4
FL	1,324				
IN	6,748	7,837	7,462	10.6	-4.8
MO	2,246	2,238	2,280	1.5	1.9
NY	3,716	2,487	3,443	-7.3	38.4
NC	1,418	1,061	1,002	-29.3	-5.6
OH	2,154	1,946	1,708	-20.7	-12.2
OR	1,102	1,100	1,155	4.8	5.0
PA	3,123	2,479	2,937	-6.0	18.5
TN	1,554	993	937	-39.7	-5.6
TX	4,519	3,962	3,393	-24.9	-14.4
UT	1,861	2,189	1,645	-11.6	-24.9
Oth Sts ²	30,979	34,515	31,819		
US	70,723	74,394	70,220	-0.7	-5.6
N Atl	12,229	10,359	11,706	-4.3	13.0
S Atl	5,556	5,490	5,214	-6.2	-5.0
E N Cen	15,091	15,995	14,614	-3.2	-8.6
W N Cen	12,379	13,906	12,196	-1.5	-12.3
S Cen	9,750	8,907	8,144	-16.5	-8.6
West	15,718	19,737	18,346	16.7	-7.0

¹ Revised.

² States not shown when fewer than 3 plants reported or individual plant operations could be disclosed. Percent change shown only when comparable States are included in the calculation.

**Canned Milk and Dry Milk Products: Manufacturers' Shipments,
and Stocks, October, 2008-2009**

Product	Oct 2008	Sep 2009 ¹	Oct 2009	Change From	
				Oct 2008	Sep 2009
	<i>1,000 Pounds</i>	<i>1,000 Pounds</i>	<i>1,000 Pounds</i>	<i>Percent</i>	<i>Percent</i>
	Manufacturers' Shipments ²				
Nonfat Dry Milk, Human	113,190	105,445	115,513	2.1	9.5
	Manufacturers' Stocks End-of-Month ³				
	<i>1,000 Pounds</i>	<i>1,000 Pounds</i>	<i>1,000 Pounds</i>	<i>Percent</i>	<i>Percent</i>
Canned Evaporated and Condensed Whole Milk	62,181	104,009	77,676	24.9	-25.3
Nonfat Dry Milk, Human	168,868	121,437	90,063	-46.7	-25.8
Dry Buttermilk, Total	9,964	4,044	3,763	-62.2	-6.9

¹ Revised.

² For dry products, shipments of bulk goods only.

³ Stocks held by manufacturers at all points and in transit on last day of month.

Procedures and Reliability: Estimates included in this report are based on data provided each month by manufacturers of these products. In 32 States, the State Departments of Agriculture assist in collection of data, which eliminates duplicate reporting and reduces respondent burden. Data are collected by mail, personal and telephone interviews following the close of each month. There were 1,116 manufacturers that made one or more products in 2008. Each month, reports are generally received from all dairy plants in States with small numbers of plants. In States with large numbers of plants, survey procedures are designed to obtain monthly reports from all large plants and from a sample of small plants. Monthly estimates are based upon returns from about 70 percent of the plants which account for 70 to 90 percent of the total production of major dairy products.

Revision Policy: Monthly estimates are subject to revision the month following the preliminary estimates. Annual estimates are published in late April in the "**Dairy Products Yearly Summary**" report which includes any revisions made to current and previous year. An attempt is made to get information from all plants for preparing these estimates.

Information Contacts

Listed below are the commodity specialists in the Livestock Branch of the National Agricultural Statistics Service to contact for additional information.

Dan Kerestes, Chief, Livestock Branch (202) 720-3570

Livestock Section

Scott Hollis, Head, Livestock Section (202) 690-2424
 Jim Collom - Dairy Products (202) 690-3236
 Joe Gaynor - Dairy Products Prices (202) 690-2168
 Jason Hardegree - Cattle, Cattle on Feed (202) 720-3040
 Sherry Bertramsen - Livestock Slaughter (515) 284-4340
 Everett Olbert - Sheep and Goats (202) 720-4751
 Mike Miller - Milk Production and Milk Cows (202) 720-3278
 Nick Streff - Hogs and Pigs (202) 720-3106

ACCESS TO REPORTS!!

For your convenience, there are several ways to obtain NASS reports, data products, and services:

INTERNET ACCESS

All NASS reports are available free of charge. For free access, connect to the Internet and go to the NASS Home Page at: www.nass.usda.gov.

E-MAIL SUBSCRIPTION

All NASS reports are available by subscription free of charge direct to your e-mail address. Starting with the NASS Home Page at www.nass.usda.gov, under the right navigation, *Receive reports by Email*, click on **National** or **State**. Follow the instructions on the screen.

PRINTED REPORTS OR DATA PRODUCTS

CALL OUR TOLL-FREE ORDER DESK: 800-999-6779 (U.S. and Canada)
Other areas, please call 703-605-6220 FAX: 703-605-6880
(Visa, MasterCard, check, or money order acceptable for payment.)

ASSISTANCE

For **assistance** with general agricultural statistics or further information about NASS or its products or services, contact the **Agricultural Statistics Hotline** at **800-727-9540**, 7:30 a.m. to 4:00 p.m. ET, or e-mail: nass@nass.usda.gov.

The U.S. Department of Agriculture (USDA) prohibits discrimination in all its programs and activities on the basis of race, color, national origin, age, disability, and where applicable, sex, marital status, familial status, parental status, religion, sexual orientation, genetic information, political beliefs, reprisal, or because all or a part of an individual's income is derived from any public assistance program. (Not all prohibited bases apply to all programs.) Persons with disabilities who require alternative means for communication of program information (Braille, large print, audiotape, etc.) should contact USDA's TARGET Center at (202) 720-2600 (voice and TDD).

To file a complaint of discrimination, write to USDA, Director, Office of Civil Rights, 1400 Independence Avenue, S.W., Washington, D.C. 20250-9410, or call (800) 795-3272 (voice) or (202) 720-6382 (TDD). USDA is an equal opportunity provider and employer.