

---

Released January 5, 2010, by the National Agricultural Statistics Service (NASS), Agricultural Statistics Board, U.S. Department of Agriculture. For information on *Dairy Products* call Jim Collom at (202) 690-3236, office hours 7:00 a.m. to 3:30 p.m. ET.

## November 2009 Highlights

**Total cheese** output (excluding cottage cheese) was 844 million pounds, 1.9 percent above November 2008 but 2.1 percent below October 2009.

**Italian type cheese** production totaled 363 million pounds, 6.5 percent above November 2008 and 0.6 percent above October 2009.

**American type cheese** production totaled 332 million pounds, 1.8 percent below November 2008 and 4.3 percent below October 2009.

**Butter** production was 121 million pounds, 9.7 percent below November 2008 but 6.9 percent above October 2009.

**Dry Milk Powders:** (comparisons with November 2008)

Nonfat dry milk, human --- 101 million pounds, down 24.7 percent.

Skim milk powders --- 19.0 million pounds, up 15.4 percent.

**Whey products:** (comparisons with November 2008)

Dry whey, total --- 86.0 million pounds, down 0.5 percent.

Lactose, human and animal --- 61.8 million pounds, up 7.6 percent.

Whey protein concentrate, total --- 34.4 million pounds, up 1.9 percent.

**Frozen products:** (comparisons with November 2008)

Ice cream, Regular (hard) --- 53.8 million gallons, down 12.5 percent.

Ice cream, Lowfat (total) --- 24.0 million gallons, up 10.3 percent.

Sherbet (hard) --- 2.64 million gallons, down 23.0 percent.

Frozen Yogurt (total) --- 4.05 million gallons, down 8.6 percent.

## U. S. Geographic Regions Dairy Products

If a region is unable to be published for confidentiality reasons, it will be combined with other regions when possible. For example, if North Atlantic can not be published, it will be combined with South Atlantic to publish Atlantic. The West North Central and East North Central will be combined, if necessary, to form North Central. In the event that neither could be published, they may be combined with South Central to publish Central. Some tables will have only limited regions shown, therefore the regions may not add to the United States total.



## Contents

## Page

Dairy Products: Production by Product, United States .....	1
Whey and Modified Whey Products: Production, Stocks, and Prices, United States .....	2
Dairy Products: Production by Product and Month, United States .....	3
Select Commodities by State and United States .....	10
Canned Milk and Dry Milk Products: Manufacturers' Shipments and Stocks .....	15
Procedures and Reliability .....	16
Information Contacts .....	16

**Dairy Products: Production by Product,  
United States, November, 2008-2009**

Product	Nov 2008	Oct 2009 <sup>1</sup>	Nov 2009	Change From	
				Nov 2008	Oct 2009
	<i>1,000 Pounds</i>	<i>1,000 Pounds</i>	<i>1,000 Pounds</i>	<i>Percent</i>	<i>Percent</i>
Butter	133,586	112,918	120,657	-9.7	6.9
Cheese					
American Types <sup>2</sup>	338,220	347,075	332,027	-1.8	-4.3
Cheddar	257,466	260,952	248,487	-3.5	-4.8
Other American	80,754	86,123	83,540	3.4	-3.0
Swiss	25,153	26,316	26,426	5.1	0.4
Brick and Muenster	11,380	11,480	10,469	-8.0	-8.8
Cream and Neufchatel	74,623	77,238	75,684	1.4	-2.0
Hispanic	14,910	16,461	15,630	4.8	-5.0
Italian Types	340,383	360,501	362,657	6.5	0.6
Mozzarella	261,641	280,011	281,163	7.5	0.4
Other Italian	78,742	80,490	81,494	3.5	1.2
All Other Types	23,922	22,827	21,313	-10.9	-6.6
Total Cheese	828,591	861,898	844,206	1.9	-2.1
Cottage Cheese, Curd <sup>3</sup>	31,677	38,912	31,832	0.5	-18.2
Cottage Cheese, Cream <sup>4</sup>	24,163	27,857	24,475	1.3	-12.1
Cottage Cheese, Lowfat <sup>5</sup>	27,098	33,897	26,490	-2.2	-21.9
Canned Evaporated and Condensed Whole Milk	49,206	51,721	47,362	-3.7	-8.4
Dry Whole Milk	3,739	4,686	4,436	18.6	-5.3
Nonfat Dry Milk, Human Skim Milk Powders <sup>6</sup>	133,702	91,485	100,736	-24.7	10.1
Dry Skim Milk, Animal	16,477	10,174	19,014	15.4	86.9
Dry Skim Milk, Animal	515	432	416	-19.2	-3.7
Dry Buttermilk	6,528	5,992	6,667	2.1	11.3
Sour Cream	105,245	108,695	98,887	-6.0	-9.0
Yogurt, Plain & Flavored	243,349	314,410	263,121	8.1	-16.3
	<i>1,000 Gallons</i>	<i>1,000 Gallons</i>	<i>1,000 Gallons</i>	<i>Percent</i>	<i>Percent</i>
Frozen Products					
Ice Cream, Regular, Hard	61,466	70,571	53,768	-12.5	-23.8
Ice Cream, Lowfat, Hard	8,304	10,859	9,449	13.8	-13.0
Ice Cream, Lowfat, Soft	13,485	17,722	14,582	8.1	-17.7
Ice Cream, Lowfat, Total	21,789	28,581	24,031	10.3	-15.9
Ice Cream, Nonfat, Hard	1,131	900	866	-23.4	-3.8
Sherbet, Hard	3,424	3,393	2,636	-23.0	-22.3
Water and Juice Ices	2,970	3,917	2,700	-9.1	-31.1
Frozen Yogurt, Total	4,431	5,188	4,049	-8.6	-22.0
Regular & Lowfat, Hard	1,387	1,473	1,200	-13.5	-18.5
Nonfat, Hard	461	531	374	-18.9	-29.6
Other Frozen Dairy Products	1,187	943	843	-29.0	-10.6
Mix for Frozen Products					
Ice Cream Mix	37,970	38,156	29,441	-22.5	-22.8
Ice Cream, Lowfat, Mix	12,509	16,327	13,705	9.6	-16.1
Ice Cream, Nonfat, Mix	731	548	507	-30.6	-7.5
Sherbet Mix	2,266	2,145	1,673	-26.2	-22.0
Yogurt Mix	2,529	3,144	2,454	-3.0	-21.9

<sup>1</sup> Revised.

<sup>2</sup> Includes Cheddar, Colby, Monterey, and Jack.

<sup>3</sup> Mostly used for processing into cream or lowfat cottage cheese.

<sup>4</sup> Fat content 4 percent or more.

<sup>5</sup> Fat content less than 4 percent.

<sup>6</sup> Includes protein standardized and blends.

<sup>7</sup> Dry milk protein concentrate 40-89.9 percent protein.

**Whey and Modified Whey Products: Production, Stocks,  
and Prices, United States, November, 2008-2009**

Product	Nov 2008	Oct 2009 <sup>1</sup>	Nov 2009	Change From	
				Nov 2008	Oct 2009
	<b>Production</b>				
	<i>1,000 Pounds</i>	<i>1,000 Pounds</i>	<i>1,000 Pounds</i>	<i>Percent</i>	<i>Percent</i>
Condensed Whey, Solids Content <sup>2</sup>					
Sweet-Type, Human	7,338	7,615	6,954	-5.2	-8.7
Dry Whey Products					
Dry Whey, Human	82,659	84,488	81,944	-0.9	-3.0
Dry Whey, Animal	3,757	4,175	4,065	8.2	-2.6
Dry Whey, Total	86,416	88,663	86,009	-0.5	-3.0
Reduced Lactose and Minerals					
Human Food	2,112	2,956	2,523	19.5	-14.6
Animal Feed	4,238	4,359	4,616	8.9	5.9
Lactose, Human and Animal	57,454	64,199	61,841	7.6	-3.7
Whey					
Protein Concentrate					
Human <sup>3</sup>	30,679	32,869	31,663	3.2	-3.7
Animal <sup>3</sup>	3,126	2,960	2,780	-11.1	-6.1
Total <sup>3</sup>	33,805	35,829	34,443	1.9	-3.9
25.0-49.9 Percent <sup>4</sup>	22,366	20,980	20,097	-10.1	-4.2
50.0-89.9 Percent <sup>4</sup>	11,439	14,849	14,346	25.4	-3.4
Protein Isolates <sup>5</sup>	4,280	4,689	4,575	6.9	-2.4
	<b>Manufacturers' Stocks End-of-Month <sup>6</sup></b>				
	<i>1,000 Pounds</i>	<i>1,000 Pounds</i>	<i>1,000 Pounds</i>	<i>Percent</i>	<i>Percent</i>
Dry Whey Products					
Dry Whey, Human	60,681	44,045	42,551	-29.9	-3.4
Dry Whey, Animal	4,708	1,549	1,872	-60.2	20.9
Dry Whey, Total	65,389	45,594	44,423	-32.1	-2.6
Reduced Lactose and Minerals					
Human and Animal <sup>7</sup>	17,712	11,972	11,053	-37.6	-7.7
Lactose, Human and Animal	95,141	53,921	57,888	-39.2	7.4
Whey					
Protein Concentrate					
Human <sup>3</sup>	31,848	33,858	34,263	7.6	1.2
Animal <sup>3</sup>	977	1,889	2,149	120.0	13.8
Total <sup>3</sup>	32,825	35,747	36,412	10.9	1.9
25.0-49.9 Percent <sup>4</sup>	20,761	21,841	23,322	12.3	6.8
50.0-89.9 Percent <sup>4</sup>	12,064	13,906	13,090	8.5	-5.9
	<b>Manufacturers' Selling Price <sup>8</sup></b>				
	<i>Cents per Pound</i>	<i>Cents per Pound</i>	<i>Cents per Pound</i>	<i>Cents Change</i>	<i>Cents Change</i>
Dry Whey, Animal	15.4	27.1	31.9	16.5	4.8

<sup>1</sup> Revised.

<sup>2</sup> Final marketable product only. Does not include quantity used or shipped to another plant for further processing into dry whey or modified whey products. Does not include sweet-type, animal whey.

<sup>3</sup> Whey Protein Concentrate, 25.0 to 89.9 percent.

<sup>4</sup> Whey Protein Concentrate, Human and Animal.

<sup>5</sup> Whey Protein Isolate, 90.0 percent or greater.

<sup>6</sup> Stocks held by manufacturers at all points and in transit.

<sup>7</sup> Reduced lactose and minerals stocks combined to avoid disclosure of individual operations.

<sup>8</sup> Prices for bulk goods, f.o.b. plant. Average monthly prices reported by firms.

**Dairy Products: Production by Product and Month,  
United States, 2008-2009 <sup>1</sup>**

Product and Month	By Month			Cumulative		
	2008	2009	Change From 2008	2008	2009	Change From 2008
	<i>1,000 Pounds</i>	<i>1,000 Pounds</i>	<i>Percent</i>	<i>1,000 Pounds</i>	<i>1,000 Pounds</i>	<i>Percent</i>
<b>Total Cheese</b>						
Jan	821,181	823,961	0.3	821,181	823,961	0.3
Feb	792,408	769,821	-2.9	1,613,589	1,593,782	-1.2
Mar	843,830	870,828	3.2	2,457,419	2,464,610	0.3
Apr	820,401	845,270	3.0	3,277,820	3,309,880	1.0
May	838,551	859,675	2.5	4,116,371	4,169,555	1.3
Jun	816,225	834,177	2.2	4,932,596	5,003,732	1.4
Jul	822,182	841,264	2.3	5,754,778	5,844,996	1.6
Aug	828,318	849,296	2.5	6,583,096	6,694,292	1.7
Sep	809,580	843,000	4.1	7,392,676	7,537,292	2.0
Oct	850,203	861,898	1.4	8,242,879	8,399,190	1.9
Nov	828,591	844,206	1.9	9,071,470	9,243,396	1.9
Dec	863,060			9,934,530		
<b>American Cheese</b>						
Jan	336,700	353,224	4.9	336,700	353,224	4.9
Feb	321,479	320,751	-0.2	658,179	673,975	2.4
Mar	340,830	359,029	5.3	999,009	1,033,004	3.4
Apr	340,115	351,162	3.2	1,339,124	1,384,166	3.4
May	352,587	366,464	3.9	1,691,711	1,750,630	3.5
Jun	336,745	353,396	4.9	2,028,456	2,104,026	3.7
Jul	341,914	352,424	3.1	2,370,370	2,456,450	3.6
Aug	339,841	345,181	1.6	2,710,211	2,801,631	3.4
Sep	320,793	339,240	5.8	3,031,004	3,140,871	3.6
Oct	343,192	347,075	1.1	3,374,196	3,487,946	3.4
Nov	338,220	332,027	-1.8	3,712,416	3,819,973	2.9
Dec	358,878			4,071,294		
<b>Cheddar Cheese</b>						
Jan	264,585	274,091	3.6	264,585	274,091	3.6
Feb	253,176	241,474	-4.6	517,761	515,565	-0.4
Mar	268,179	273,581	2.0	785,940	789,146	0.4
Apr	270,445	268,897	-0.6	1,056,385	1,058,043	0.2
May	274,765	285,473	3.9	1,331,150	1,343,516	0.9
Jun	260,962	272,996	4.6	1,592,112	1,616,512	1.5
Jul	265,249	267,125	0.7	1,857,361	1,883,637	1.4
Aug	257,249	262,790	2.2	2,114,610	2,146,427	1.5
Sep	238,336	255,391	7.2	2,352,946	2,401,818	2.1
Oct	255,411	260,952	2.2	2,608,357	2,662,770	2.1
Nov	257,466	248,487	-3.5	2,865,823	2,911,257	1.6
Dec	283,307			3,149,130		

See footnote(s) at end of table.

--continued

**Dairy Products: Production by Product and Month,  
United States, 2008-2009<sup>1</sup> (continued)**

Product and Month	By Month			Cumulative		
	2008	2009	Change From 2008	2008	2009	Change From 2008
	<i>1,000 Pounds</i>	<i>1,000 Pounds</i>	<i>Percent</i>	<i>1,000 Pounds</i>	<i>1,000 Pounds</i>	<i>Percent</i>
<b>Italian Cheese</b>						
Jan	355,109	347,897	-2.0	355,109	347,897	-2.0
Feb	339,375	319,870	-5.7	694,484	667,767	-3.8
Mar	363,145	362,867	-0.1	1,057,629	1,030,634	-2.6
Apr	349,049	350,267	0.3	1,406,678	1,380,901	-1.8
May	349,033	349,963	0.3	1,755,711	1,730,864	-1.4
Jun	336,646	344,448	2.3	2,092,357	2,075,312	-0.8
Jul	337,254	349,291	3.6	2,429,611	2,424,603	-0.2
Aug	336,569	349,696	3.9	2,766,180	2,774,299	0.3
Sep	339,473	350,437	3.2	3,105,653	3,124,736	0.6
Oct	348,051	360,501	3.6	3,453,704	3,485,237	0.9
Nov	340,383	362,657	6.5	3,794,087	3,847,894	1.4
Dec	363,941			4,158,028		
<b>Mozzarella</b>						
Jan	282,325	268,056	-5.1	282,325	268,056	-5.1
Feb	267,174	247,418	-7.4	549,499	515,474	-6.2
Mar	288,152	281,087	-2.5	837,651	796,561	-4.9
Apr	275,693	272,270	-1.2	1,113,344	1,068,831	-4.0
May	273,126	273,405	0.1	1,386,470	1,342,236	-3.2
Jun	262,443	269,830	2.8	1,648,913	1,612,066	-2.2
Jul	261,510	275,051	5.2	1,910,423	1,887,117	-1.2
Aug	260,268	274,368	5.4	2,170,691	2,161,485	-0.4
Sep	260,972	272,320	4.3	2,431,663	2,433,805	0.1
Oct	266,114	280,011	5.2	2,697,777	2,713,816	0.6
Nov	261,641	281,163	7.5	2,959,418	2,994,979	1.2
Dec	279,973			3,239,391		
<b>Other Italian</b>						
Jan	72,784	79,841	9.7	72,784	79,841	9.7
Feb	72,201	72,452	0.3	144,985	152,293	5.0
Mar	74,993	81,780	9.1	219,978	234,073	6.4
Apr	73,356	77,997	6.3	293,334	312,070	6.4
May	75,907	76,558	0.9	369,241	388,628	5.3
Jun	74,203	74,618	0.6	443,444	463,246	4.5
Jul	75,744	74,240	-2.0	519,188	537,486	3.5
Aug	76,301	75,328	-1.3	595,489	612,814	2.9
Sep	78,501	78,117	-0.5	673,990	690,931	2.5
Oct	81,937	80,490	-1.8	755,927	771,421	2.0
Nov	78,742	81,494	3.5	834,669	852,915	2.2
Dec	83,968			918,637		

See footnote(s) at end of table.

--continued

**Dairy Products: Production by Product and Month,  
United States, 2008-2009 <sup>1</sup> (continued)**

Product and Month	By Month			Cumulative		
	2008	2009	Change From 2008	2008	2009	Change From 2008
	<i>1,000 Pounds</i>	<i>1,000 Pounds</i>	<i>Percent</i>	<i>1,000 Pounds</i>	<i>1,000 Pounds</i>	<i>Percent</i>
<b>Butter</b>						
Jan	169,218	174,684	3.2	169,218	174,684	3.2
Feb	146,737	145,687	-0.7	315,955	320,371	1.4
Mar	149,851	147,245	-1.7	465,806	467,616	0.4
Apr	149,984	142,509	-5.0	615,790	610,125	-0.9
May	139,858	139,373	-0.3	755,648	749,498	-0.8
Jun	116,713	125,497	7.5	872,361	874,995	0.3
Jul	114,185	114,293	0.1	986,546	989,288	0.3
Aug	115,939	100,854	-13.0	1,102,485	1,090,142	-1.1
Sep	121,035	94,570	-21.9	1,223,520	1,184,712	-3.2
Oct	130,633	112,918	-13.6	1,354,153	1,297,630	-4.2
Nov	133,586	120,657	-9.7	1,487,739	1,418,287	-4.7
Dec	156,339			1,644,078		
<b>Nonfat Dry Milk, Human</b>						
Jan	112,970	154,812	37.0	112,970	154,812	37.0
Feb	121,107	122,812	1.4	234,077	277,624	18.6
Mar	136,993	135,277	-1.3	371,070	412,901	11.3
Apr	134,861	138,529	2.7	505,931	551,430	9.0
May	131,607	149,218	13.4	637,538	700,648	9.9
Jun	135,979	144,141	6.0	773,517	844,789	9.2
Jul	134,875	131,963	-2.2	908,392	976,752	7.5
Aug	115,205	105,750	-8.2	1,023,597	1,082,502	5.8
Sep	85,541	86,643	1.3	1,109,138	1,169,145	5.4
Oct	121,071	91,485	-24.4	1,230,209	1,260,630	2.5
Nov	133,702	100,736	-24.7	1,363,911	1,361,366	-0.2
Dec	155,262			1,519,173		
<b>Skim Milk Powders <sup>2</sup></b>						
Jan	45,614	17,663	-61.3	45,614	17,663	-61.3
Feb	33,804	22,693	-32.9	79,418	40,356	-49.2
Mar	34,428	24,432	-29.0	113,846	64,788	-43.1
Apr	36,137	24,645	-31.8	149,983	89,433	-40.4
May	45,511	26,731	-41.3	195,494	116,164	-40.6
Jun	33,873	16,796	-50.4	229,367	132,960	-42.0
Jul	27,120	14,023	-48.3	256,487	146,983	-42.7
Aug	26,649	10,677	-59.9	283,136	157,660	-44.3
Sep	38,868	12,585	-67.6	322,004	170,245	-47.1
Oct	17,556	10,174	-42.0	339,560	180,419	-46.9
Nov	16,477	19,014	15.4	356,037	199,433	-44.0
Dec	17,793			373,830		

See footnote(s) at end of table.

--continued



**Dairy Products: Production by Product and Month,  
United States, 2008-2009 <sup>1</sup> (continued)**

Product and Month	By Month			Cumulative		
	2008	2009	Change From 2008	2008	2009	Change From 2008
	<i>1,000 Pounds</i>	<i>1,000 Pounds</i>	<i>Percent</i>	<i>1,000 Pounds</i>	<i>1,000 Pounds</i>	<i>Percent</i>
Dry Whey, Total <sup>3</sup>						
Jan	93,939	88,464	-5.8	93,939	88,464	-5.8
Feb	89,200	82,869	-7.1	183,139	171,333	-6.4
Mar	99,767	92,213	-7.6	282,906	263,546	-6.8
Apr	98,668	92,690	-6.1	381,574	356,236	-6.6
May	99,025	93,861	-5.2	480,599	450,097	-6.3
Jun	95,045	93,327	-1.8	575,644	543,424	-5.6
Jul	91,512	94,085	2.8	667,156	637,509	-4.4
Aug	89,253	92,091	3.2	756,409	729,600	-3.5
Sep	85,891	86,808	1.1	842,300	816,408	-3.1
Oct	87,708	88,663	1.1	930,008	905,071	-2.7
Nov	86,416	86,009	-0.5	1,016,424	991,080	-2.5
Dec	91,115			1,107,539		
Lactose, Human and Animal						
Jan	62,275	59,807	-4.0	62,275	59,807	-4.0
Feb	60,504	51,610	-14.7	122,779	111,417	-9.3
Mar	64,289	59,224	-7.9	187,068	170,641	-8.8
Apr	63,817	58,491	-8.3	250,885	229,132	-8.7
May	65,588	59,991	-8.5	316,473	289,123	-8.6
Jun	63,383	60,090	-5.2	379,856	349,213	-8.1
Jul	65,229	61,223	-6.1	445,085	410,436	-7.8
Aug	63,488	62,281	-1.9	508,573	472,717	-7.1
Sep	58,834	58,916	0.1	567,407	531,633	-6.3
Oct	60,005	64,199	7.0	627,412	595,832	-5.0
Nov	57,454	61,841	7.6	684,866	657,673	-4.0
Dec	60,429			745,295		
Whey Protein Concentrate, Total						
Jan	35,241	34,185	-3.0	35,241	34,185	-3.0
Feb	33,598	31,243	-7.0	68,839	65,428	-5.0
Mar	36,552	33,840	-7.4	105,391	99,268	-5.8
Apr	36,286	31,888	-12.1	141,677	131,156	-7.4
May	37,046	34,781	-6.1	178,723	165,937	-7.2
Jun	34,571	33,832	-2.1	213,294	199,769	-6.3
Jul	36,787	34,349	-6.6	250,081	234,118	-6.4
Aug	34,822	35,437	1.8	284,903	269,555	-5.4
Sep	33,081	34,588	4.6	317,984	304,143	-4.4
Oct	35,830	35,829		353,814	339,972	-3.9
Nov	33,805	34,443	1.9	387,619	374,415	-3.4
Dec	36,028			423,647		

See footnote(s) at end of table.

--continued

**Dairy Products: Production by Product and Month,  
United States, 2008-2009 <sup>1</sup> (continued)**

Product and Month	By Month			Cumulative		
	2008	2009	Change From 2008	2008	2009	Change From 2008
	<i>1,000 Pounds</i>	<i>1,000 Pounds</i>	<i>Percent</i>	<i>1,000 Pounds</i>	<i>1,000 Pounds</i>	<i>Percent</i>
<b>Cream Cottage Cheese</b>						
Jan	26,831	26,400	-1.6	26,831	26,400	-1.6
Feb	25,187	26,713	6.1	52,018	53,113	2.1
Mar	27,822	30,807	10.7	79,840	83,920	5.1
Apr	26,229	31,287	19.3	106,069	115,207	8.6
May	28,849	31,721	10.0	134,918	146,928	8.9
Jun	27,000	30,581	13.3	161,918	177,509	9.6
Jul	28,930	31,733	9.7	190,848	209,242	9.6
Aug	29,119	31,262	7.4	219,967	240,504	9.3
Sep	28,487	31,618	11.0	248,454	272,122	9.5
Oct	27,480	27,857	1.4	275,934	299,979	8.7
Nov	24,163	24,475	1.3	300,097	324,454	8.1
Dec	25,724			325,821		
<b>Lowfat Cottage Cheese</b>						
Jan	33,057	30,915	-6.5	33,057	30,915	-6.5
Feb	31,451	30,933	-1.6	64,508	61,848	-4.1
Mar	32,973	34,563	4.8	97,481	96,411	-1.1
Apr	33,773	34,652	2.6	131,254	131,063	-0.1
May	35,483	32,932	-7.2	166,737	163,995	-1.6
Jun	32,074	33,241	3.6	198,811	197,236	-0.8
Jul	33,416	35,028	4.8	232,227	232,264	
Aug	33,587	33,373	-0.6	265,814	265,637	-0.1
Sep	34,019	34,893	2.6	299,833	300,530	0.2
Oct	32,767	33,897	3.4	332,600	334,427	0.5
Nov	27,098	26,490	-2.2	359,698	360,917	0.3
Dec	29,935			389,633		
<b>Sour Cream</b>						
Jan	92,190	86,957	-5.7	92,190	86,957	-5.7
Feb	81,494	81,338	-0.2	173,684	168,295	-3.1
Mar	93,193	97,476	4.6	266,877	265,771	-0.4
Apr	84,041	92,823	10.4	350,918	358,594	2.2
May	97,322	94,799	-2.6	448,240	453,393	1.1
Jun	90,846	95,144	4.7	539,086	548,537	1.8
Jul	91,042	93,361	2.5	630,128	641,898	1.9
Aug	94,794	93,997	-0.8	724,922	735,895	1.5
Sep	88,541	92,966	5.0	813,463	828,861	1.9
Oct	102,046	108,695	6.5	915,509	937,556	2.4
Nov	105,245	98,887	-6.0	1,020,754	1,036,443	1.5
Dec	106,325			1,127,079		

See footnote(s) at end of table.

--continued

**Dairy Products: Production by Product and Month,  
United States, 2008-2009 <sup>1</sup> (continued)**

Product and Month	By Month			Cumulative		
	2008	2009	Change From 2008	2008	2009	Change From 2008
	<i>1,000 Gallons</i>	<i>1,000 Gallons</i>	<i>Percent</i>	<i>1,000 Gallons</i>	<i>1,000 Gallons</i>	<i>Percent</i>
<b>Ice Cream, Regular, Hard</b>						
Jan	62,898	57,527	-8.5	62,898	57,527	-8.5
Feb	66,569	63,608	-4.4	129,467	121,135	-6.4
Mar	75,908	76,124	0.3	205,375	197,259	-4.0
Apr	77,122	79,517	3.1	282,497	276,776	-2.0
May	81,171	80,636	-0.7	363,668	357,412	-1.7
Jun	91,952	89,918	-2.2	455,620	447,330	-1.8
Jul	84,717	85,969	1.5	540,337	533,299	-1.3
Aug	78,790	79,140	0.4	619,127	612,439	-1.1
Sep	75,864	74,394	-1.9	694,991	686,833	-1.2
Oct	70,723	70,571	-0.2	765,714	757,404	-1.1
Nov	61,466	53,768	-12.5	827,180	811,172	-1.9
Dec	53,734			880,914		
<b>Ice Cream, Lowfat, Total</b>						
Jan	25,673	23,788	-7.3	25,673	23,788	-7.3
Feb	27,723	26,518	-4.3	53,396	50,306	-5.8
Mar	32,192	35,860	11.4	85,588	86,166	0.7
Apr	36,386	35,182	-3.3	121,974	121,348	-0.5
May	37,585	36,512	-2.9	159,559	157,860	-1.1
Jun	41,838	42,240	1.0	201,397	200,100	-0.6
Jul	38,853	39,715	2.2	240,250	239,815	-0.2
Aug	36,122	36,559	1.2	276,372	276,374	0.0
Sep	29,976	31,169	4.0	306,348	307,543	0.4
Oct	27,291	28,581	4.7	333,639	336,124	0.7
Nov	21,789	24,031	10.3	355,428	360,155	1.3
Dec	21,794			377,222		
<b>Sherbet, Hard</b>						
Jan	3,935	3,552	-9.7	3,935	3,552	-9.7
Feb	4,060	3,980	-2.0	7,995	7,532	-5.8
Mar	5,358	5,090	-5.0	13,353	12,622	-5.5
Apr	5,536	5,106	-7.8	18,889	17,728	-6.1
May	5,448	4,989	-8.4	24,337	22,717	-6.7
Jun	5,546	5,517	-0.5	29,883	28,234	-5.5
Jul	5,189	5,018	-3.3	35,072	33,252	-5.2
Aug	4,523	4,265	-5.7	39,595	37,517	-5.2
Sep	4,646	4,376	-5.8	44,241	41,893	-5.3
Oct	4,176	3,393	-18.8	48,417	45,286	-6.5
Nov	3,424	2,636	-23.0	51,841	47,922	-7.6
Dec	3,442			55,283		

See footnote(s) at end of table.

--continued

**Dairy Products: Production by Product and Month,  
United States, 2008-2009 <sup>1</sup> (continued)**

Product and Month	By Month			Cumulative		
	2008	2009	Change From 2008	2008	2009	Change From 2008
	<i>1,000 Pounds</i>	<i>1,000 Pounds</i>	<i>Percent</i>	<i>1,000 Pounds</i>	<i>1,000 Pounds</i>	<i>Percent</i>
Yogurt, Plain & Flavored						
Jan	301,753	306,406	1.5	301,753	306,406	1.5
Feb	303,873	313,949	3.3	605,626	620,355	2.4
Mar	330,037	365,333	10.7	935,663	985,688	5.3
Apr	301,550	323,716	7.4	1,237,213	1,309,404	5.8
May	309,007	325,561	5.4	1,546,220	1,634,965	5.7
Jun	297,939	334,486	12.3	1,844,159	1,969,451	6.8
Jul	287,147	304,189	5.9	2,131,306	2,273,640	6.7
Aug	304,917	328,922	7.9	2,436,223	2,602,562	6.8
Sep	331,046	371,321	12.2	2,767,269	2,973,883	7.5
Oct	301,458	314,410	4.3	3,068,727	3,288,293	7.2
Nov	243,349	263,121	8.1	3,312,076	3,551,414	7.2
Dec	287,183			3,599,259		
	<i>1,000 Gallons</i>	<i>1,000 Gallons</i>	<i>Percent</i>	<i>1,000 Gallons</i>	<i>1,000 Gallons</i>	<i>Percent</i>
Yogurt, Frozen						
Jan	5,419	3,430	-36.7	5,419	3,430	-36.7
Feb	5,716	4,752	-16.9	11,135	8,182	-26.5
Mar	7,237	6,161	-14.9	18,372	14,343	-21.9
Apr	7,400	6,077	-17.9	25,772	20,420	-20.8
May	7,576	5,966	-21.3	33,348	26,386	-20.9
Jun	7,493	6,744	-10.0	40,841	33,130	-18.9
Jul	6,977	7,083	1.5	47,818	40,213	-15.9
Aug	6,359	6,711	5.5	54,177	46,924	-13.4
Sep	5,782	5,810	0.5	59,959	52,734	-12.0
Oct	5,359	5,188	-3.2	65,318	57,922	-11.3
Nov	4,431	4,049	-8.6	69,749	61,971	-11.2
Dec	4,393			74,142		

<sup>1</sup> October 2009 data revised.

<sup>2</sup> Includes protein standardized and blends.

<sup>3</sup> Excludes all modified dry whey products.

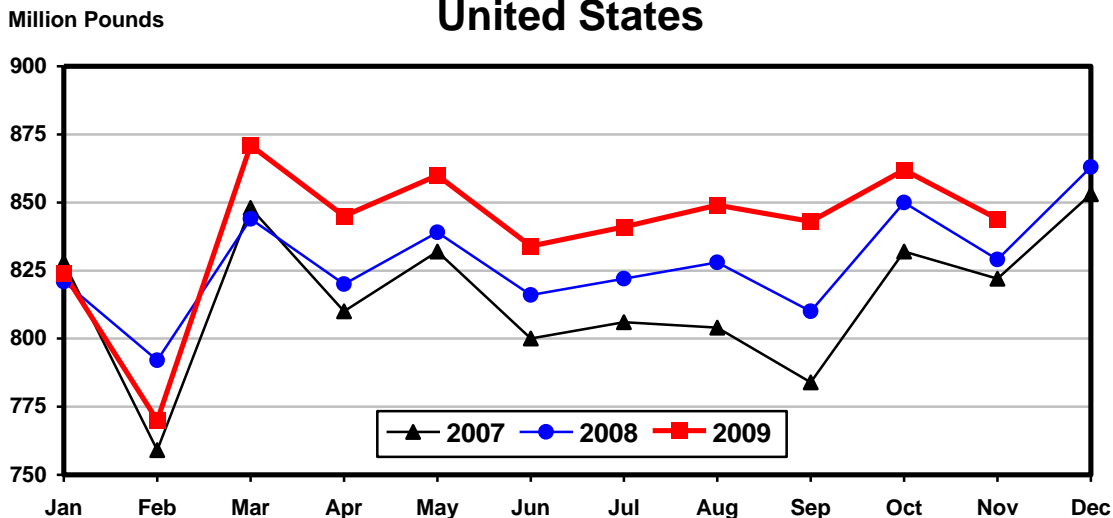
**Total Cheese, Excluding Cottage Cheese: Production by State and United States, November 2008-2009**

State	Nov 2008	Oct <sup>1</sup> 2009	Nov 2009	Change From	
				Nov 2008	Oct 2009
	<i>1,000 Pounds</i>	<i>1,000 Pounds</i>	<i>1,000 Pounds</i>	<i>Percent</i>	<i>Percent</i>
CA	174,599	175,054	170,681	-2.2	-2.5
ID	66,441	68,995	67,276	1.3	-2.5
IL	5,833	6,097	5,873	0.7	-3.7
IA	14,240	20,239	19,361	36.0	-4.3
MN	53,652	53,508	51,768	-3.5	-3.3
NJ	2,468	2,885	2,666	8.0	-7.6
NM	49,545	53,117	53,704	8.4	1.1
NY	63,014	66,649	64,073	1.7	-3.9
OH	14,861	17,240	17,360	16.8	0.7
PA	30,176	32,844	32,728	8.5	-0.4
SD	21,230	20,306	18,512	-12.8	-8.8
UT	9,914	9,757	10,133	2.2	3.9
VT	11,006	11,343	10,331	-6.1	-8.9
WI	208,955	224,283	217,861	4.3	-2.9
Oth Sts <sup>2</sup>	102,657	99,581	101,879	-0.8	2.3
US	828,591	861,898	844,206	1.9	-2.1
Atlantic	114,362	120,635	117,251	2.5	-2.8
Central	367,384	386,791	379,817	3.4	-1.8
West	346,845	354,472	347,138	0.1	-2.1

<sup>1</sup> Revised.

<sup>2</sup> States not shown when fewer than 3 plants reported or individual plant operations could be disclosed. Percent change shown only when comparable States are included in the calculation.

**Total Cheese Production  
United States**



**American Cheese: Production by State and United States, November 2008-2009**

State	Nov 2008	Oct <sup>1</sup> 2009	Nov 2009	Change From	
				Nov 2008	Oct 2009
	<i>1,000 Pounds</i>	<i>1,000 Pounds</i>	<i>1,000 Pounds</i>	<i>Percent</i>	<i>Percent</i>
CA	55,921	53,417	47,852	-14.4	-10.4
ID	52,876	55,032	53,713	1.6	-2.4
IA	11,638	16,449	15,348	31.9	-6.7
OH	547	911	681	24.5	-25.2
OR	14,157	14,929	12,992	-8.2	-13.0
WI	66,963	71,403	68,400	2.1	-4.2
Oth Sts <sup>2</sup>	136,118	134,934	133,041	-2.3	-1.4
US	338,220	347,075	332,027	-1.8	-4.3
Atlantic	11,994	12,188	11,657	-2.8	-4.4
Central	155,759	165,796	158,891	2.0	-4.2
West	170,467	169,091	161,479	-5.3	-4.5

<sup>1</sup> Revised.

<sup>2</sup> States not shown when fewer than 3 plants reported or individual plant operations could be disclosed. Percent change shown only when comparable States are included in the calculation.

**Cheddar Cheese: Production by State and United States, November 2008-2009**

State	Nov 2008	Oct <sup>1</sup> 2009	Nov 2009	Change From	
				Nov 2008	Oct 2009
	<i>1,000 Pounds</i>	<i>1,000 Pounds</i>	<i>1,000 Pounds</i>	<i>Percent</i>	<i>Percent</i>
CA	30,502	29,778	24,742	-18.9	-16.9
ID	41,178	46,048	45,560	10.6	-1.1
IA	8,504	10,246	8,905	4.7	-13.1
MN	42,635	42,480	39,858	-6.5	-6.2
OH	339	637	422	24.5	-33.8
WI	51,874	54,542	53,000	2.2	-2.8
Oth Sts <sup>2</sup>	82,434	77,221	76,000	-7.8	-1.6
US	257,466	260,952	248,487	-3.5	-4.8
Atlantic	11,577	11,845	11,219	-3.1	-5.3
Central	125,563	128,393	121,547	-3.2	-5.3
West	120,326	120,714	115,721	-3.8	-4.1

<sup>1</sup> Revised.

<sup>2</sup> States not shown when fewer than 3 plants reported or individual plant operations could be disclosed. Percent change shown only when comparable States are included in the calculation.

**Italian Cheese, Total: Production by State and  
United States, November 2008-2009**

State	Nov 2008	Oct <sup>1</sup> 2009	Nov 2009	Change From	
				Nov 2008	Oct 2009
	<i>1,000 Pounds</i>	<i>1,000 Pounds</i>	<i>1,000 Pounds</i>	<i>Percent</i>	<i>Percent</i>
CA	101,951	107,845	109,548	7.5	1.6
NY	33,222	31,737	34,067	2.5	7.3
PA	16,239	20,717	19,503	20.1	-5.9
WI	95,792	103,319	102,547	7.1	-0.7
Oth Sts <sup>2</sup>	93,179	96,883	96,992	4.1	0.1
US	340,383	360,501	362,657	6.5	0.6
Atlantic	59,591	62,065	63,145	6.0	1.7
Central	132,999	139,329	140,114	5.3	0.6
West	147,793	159,107	159,398	7.9	0.2

<sup>1</sup> Revised.

<sup>2</sup> States not shown when fewer than 3 plants reported or individual plant operations could be disclosed. Percent change shown only when comparable States are included in the calculation.

**Mozzarella Cheese: Production by State and United States, November 2008-2009**

State	Nov 2008	Oct <sup>1</sup> 2009	Nov 2009	Change From	
				Nov 2008	Oct 2009
	<i>1,000 Pounds</i>	<i>1,000 Pounds</i>	<i>1,000 Pounds</i>	<i>Percent</i>	<i>Percent</i>
CA	91,757	96,965	99,221	8.1	2.3
NY	16,238	16,006	16,195	-0.3	1.2
WI	66,227	70,905	71,100	7.4	0.3
Oth Sts <sup>2</sup>	87,419	96,135	94,647	8.3	-1.5
US	261,641	280,011	281,163	7.5	0.4
Atlantic	34,458	39,029	38,719	12.4	-0.8
Central	91,956	95,664	96,147	4.6	0.5
West	135,227	145,318	146,297	8.2	0.7

<sup>1</sup> Revised.

<sup>2</sup> States not shown when fewer than 3 plants reported or individual plant operations could be disclosed. Percent change shown only when comparable States are included in the calculation.

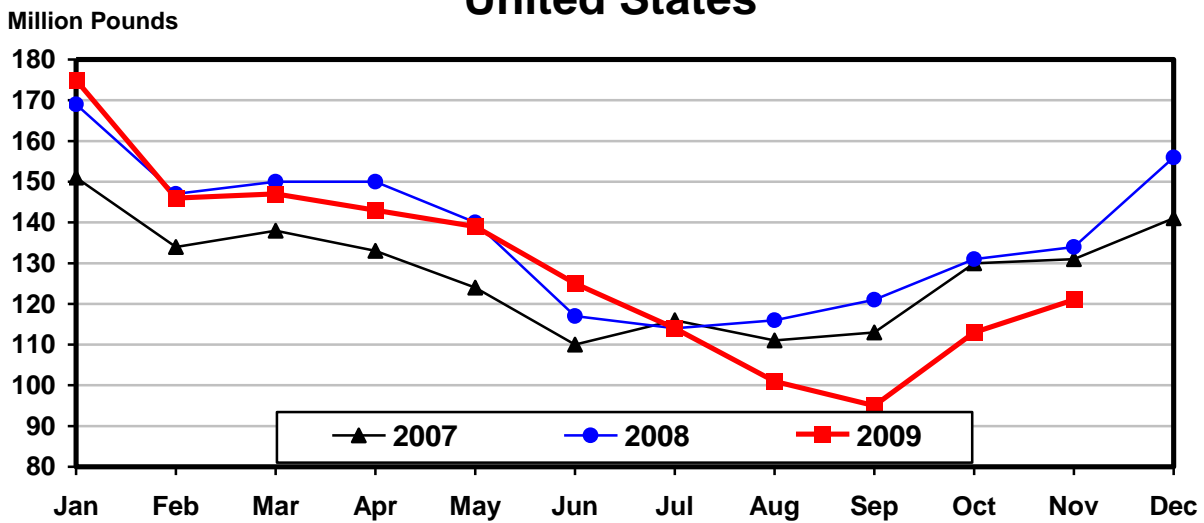
**Butter: Production by State and United States, November 2008-2009**

State	Nov 2008	Oct <sup>1</sup> 2009	Nov 2009	Change From	
				Nov 2008	Oct 2009
	<i>1,000 Pounds</i>	<i>1,000 Pounds</i>	<i>1,000 Pounds</i>	<i>Percent</i>	<i>Percent</i>
CA	45,742	41,872	44,961	-1.7	7.4
PA	5,787	5,648	6,757	16.8	19.6
WI	28,617				
Oth Sts <sup>2</sup>	53,440	65,398	68,939		
US	133,586	112,918	120,657	-9.7	6.9
Atlantic	9,587	8,862	10,534	9.9	18.9
Central	56,468	42,725	44,061	-22.0	3.1
West	67,531	61,331	66,062	-2.2	7.7

<sup>1</sup> Revised.

<sup>2</sup> States not shown when fewer than 3 plants reported or individual plant operations could be disclosed. Percent change shown only when comparable States are included in the calculation.

## Total Butter Production United States





**Nonfat Dry Milk, Human: Production by State  
and United States, November 2008-2009**

State	Nov 2008	Oct <sup>1</sup> 2009	Nov 2009	Change From	
				Nov 2008	Oct 2009
	<i>1,000 Pounds</i>	<i>1,000 Pounds</i>	<i>1,000 Pounds</i>	<i>Percent</i>	<i>Percent</i>
CA	72,402	63,174	59,721	-17.5	-5.5
Oth Sts <sup>2</sup>	61,300	28,311	41,015	-33.1	44.9
US	133,702	91,485	100,736	-24.7	10.1
Atlantic	14,507	5,219	8,528	-41.2	63.4
Central	12,419	5,668	8,355	-32.7	47.4
West	106,776	80,598	83,853	-21.5	4.0

<sup>1</sup> Revised.

<sup>2</sup> States not shown when fewer than 3 plants reported or individual plant operations could be disclosed. Percent change shown only when comparable States are included in the calculation.

**Dry Whey, Human: Production by State  
and United States, November 2008-2009**

State	Nov 2008	Oct <sup>1</sup> 2009	Nov 2009	Change From	
				Nov 2008	Oct 2009
	<i>1,000 Pounds</i>	<i>1,000 Pounds</i>	<i>1,000 Pounds</i>	<i>Percent</i>	<i>Percent</i>
NY	9,864	10,478	10,014	1.5	-4.4
WI	23,578	24,290	24,000	1.8	-1.2
Oth Sts <sup>2</sup>	49,217	49,720	47,930	-2.6	-3.6
US	82,659	84,488	81,944	-0.9	-3.0
Atlantic	16,407	19,021	18,047	10.0	-5.1
Central	38,004	38,195	38,819	2.1	1.6
West	28,248	27,272	25,078	-11.2	-8.0

<sup>1</sup> Revised.

<sup>2</sup> States not shown when fewer than 3 plants reported or individual plant operations could be disclosed. Percent change shown only when comparable States are included in the calculation.

**Ice Cream, Regular, Hard: Production by State and United States,  
November 2008-2009**

State	Nov 2008	Oct <sup>1</sup> 2009	Nov 2009	Change From	
				Nov 2008	Oct 2009
	<i>1,000 Gallons</i>	<i>1,000 Gallons</i>	<i>1,000 Gallons</i>	<i>Percent</i>	<i>Percent</i>
CA	9,054	12,439	7,703	-14.9	-38.1
FL	1,352				
IN	6,892	7,462	7,503	8.9	0.5
MO	1,334	2,280	1,455	9.1	-36.2
NY	2,380	3,443	2,129	-10.5	-38.2
NC	1,049	1,002	885	-15.6	-11.7
OH	1,339	1,708	1,510	12.8	-11.6
OR	780	1,154	811	4.0	-29.7
PA	2,384	2,937	2,708	13.6	-7.8
TN	1,206	937	692	-42.6	-26.1
TX	3,803	3,393	2,879	-24.3	-15.1
UT	2,211	1,645	1,373	-37.9	-16.5
Oth Sts <sup>2</sup>	27,682	32,171	24,120		
US	61,466	70,571	53,768	-12.5	-23.8
N Atl	9,125	12,061	8,726	-4.4	-27.7
S Atl	4,845	5,214	4,601	-5.0	-11.8
E N Cen	12,479	14,614	13,498	8.2	-7.6
W N Cen	11,669	12,195	8,452	-27.6	-30.7
S Cen	9,026	8,143	6,696	-25.8	-17.8
West	14,322	18,344	11,795	-17.6	-35.7

<sup>1</sup> Revised.

<sup>2</sup> States not shown when fewer than 3 plants reported or individual plant operations could be disclosed. Percent change shown only when comparable States are included in the calculation.

**Canned Milk and Dry Milk Products: Manufacturers' Shipments,  
and Stocks, November, 2008-2009**

Product	Nov 2008	Oct 2009 <sup>1</sup>	Nov 2009	Change From	
				Nov 2008	Oct 2009
	<i>1,000 Pounds</i>	<i>1,000 Pounds</i>	<i>1,000 Pounds</i>	<i>Percent</i>	<i>Percent</i>
	Manufacturers' Shipments <sup>2</sup>				
Nonfat Dry Milk, Human	133,151	115,467	67,800	-49.1	-41.3
	Manufacturers' Stocks End-of-Month <sup>3</sup>				
	<i>1,000 Pounds</i>	<i>1,000 Pounds</i>	<i>1,000 Pounds</i>	<i>Percent</i>	<i>Percent</i>
Canned Evaporated and Condensed Whole Milk	42,933	78,179	59,119	37.7	-24.4
Nonfat Dry Milk, Human	186,842	89,274	113,646	-39.2	27.3
Dry Buttermilk, Total	10,630	3,856	5,182	-51.3	34.4

<sup>1</sup> Revised.

<sup>2</sup> For dry products, shipments of bulk goods only.

<sup>3</sup> Stocks held by manufacturers at all points and in transit on last day of month.

**Procedures and Reliability:** Estimates included in this report are based on data provided each month by manufacturers of these products. In 32 States, the State Departments of Agriculture assist in collection of data, which eliminates duplicate reporting and reduces respondent burden. Data are collected by mail, personal and telephone interviews following the close of each month. There were 1,116 manufacturers that made one or more products in 2008. Each month, reports are generally received from all dairy plants in States with small numbers of plants. In States with large numbers of plants, survey procedures are designed to obtain monthly reports from all large plants and from a sample of small plants. Monthly estimates are based upon returns from about 70 percent of the plants which account for 70 to 90 percent of the total production of major dairy products.

**Revision Policy:** Monthly estimates are subject to revision the month following the preliminary estimates. Annual estimates are published in late April in the "**Dairy Products Yearly Summary**" report which includes any revisions made to current and previous year. An attempt is made to get information from all plants for preparing these estimates.

### Information Contacts

Listed below are the commodity specialists in the Livestock Branch of the National Agricultural Statistics Service to contact for additional information.

Dan Kerestes, Chief, Livestock Branch ..... (202) 720-3570

Livestock Section

Scott Hollis, Head, Livestock Section ..... (202) 690-2424  
     Jim Collom - Dairy Products ..... (202) 690-3236  
     Joe Gaynor - Dairy Products Prices ..... (202) 690-2168  
     Jason Hardegree - Cattle, Cattle on Feed ..... (202) 720-3040  
     Sherry Bertramsen - Livestock Slaughter ..... (515) 284-4340  
     Everett Olbert - Sheep and Goats ..... (202) 720-4751  
     Mike Miller - Milk Production and Milk Cows ..... (202) 720-3278  
     Nick Streff - Hogs and Pigs ..... (202) 720-3106

## ACCESS TO REPORTS!!

---

For your convenience, there are several ways to obtain NASS reports, data products, and services:

### INTERNET ACCESS

All NASS reports are available free of charge. For free access, connect to the Internet and go to the NASS Home Page at: [www.nass.usda.gov](http://www.nass.usda.gov).

### E-MAIL SUBSCRIPTION

All NASS reports are available by subscription free of charge direct to your e-mail address. Starting with the NASS Home Page at [www.nass.usda.gov](http://www.nass.usda.gov), under the right navigation, *Receive reports by Email*, click on **National** or **State**. Follow the instructions on the screen.

-----

### PRINTED REPORTS OR DATA PRODUCTS

**CALL OUR TOLL-FREE ORDER DESK: 800-999-6779 (U.S. and Canada)**  
**Other areas, please call 703-605-6220      FAX: 703-605-6880**  
**(Visa, MasterCard, check, or money order acceptable for payment.)**

-----

### ASSISTANCE

For **assistance** with general agricultural statistics or further information about NASS or its products or services, contact the **Agricultural Statistics Hotline** at **800-727-9540**, 7:30 a.m. to 4:00 p.m. ET, or e-mail: [nass@nass.usda.gov](mailto:nass@nass.usda.gov).

The U.S. Department of Agriculture (USDA) prohibits discrimination in all its programs and activities on the basis of race, color, national origin, age, disability, and where applicable, sex, marital status, familial status, parental status, religion, sexual orientation, genetic information, political beliefs, reprisal, or because all or a part of an individual's income is derived from any public assistance program. (Not all prohibited bases apply to all programs.) Persons with disabilities who require alternative means for communication of program information (Braille, large print, audiotape, etc.) should contact USDA's TARGET Center at (202) 720-2600 (voice and TDD).

To file a complaint of discrimination, write to USDA, Director, Office of Civil Rights, 1400 Independence Avenue, S.W., Washington, D.C. 20250-9410, or call (800) 795-3272 (voice) or (202) 720-6382 (TDD). USDA is an equal opportunity provider and employer.