



NASS

FACT FINDERS FOR AGRICULTURE
UNITED STATES DEPARTMENT OF AGRICULTURE

Washington, D.C.

Dairy Products Prices

Released October 14, 2005, by the National Agricultural Statistics Service (NASS), Agricultural Statistics Board, U.S. Department of Agriculture. For information on *Dairy Products Prices* call Charmaine Wilson at 202-690-2168, office hours 7:00 a.m. to 4:30 p.m. ET.

Dairy Products Prices Highlights

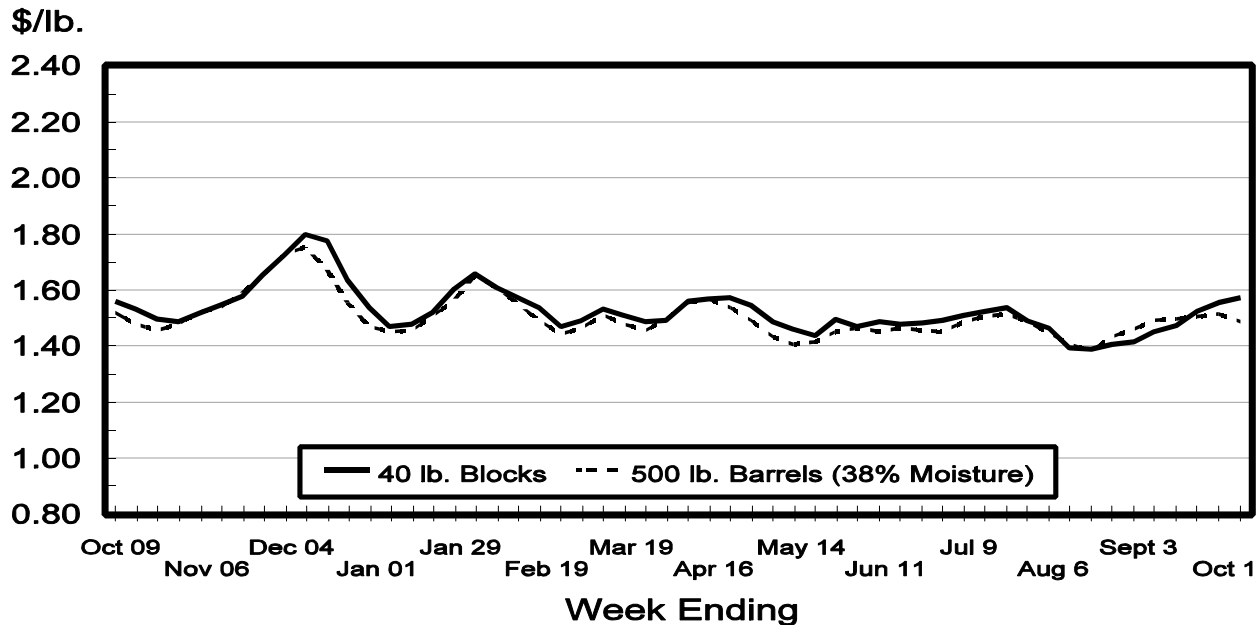
Cheddar Cheese prices received for US 40 pound Blocks averaged \$1.57 per pound for the week ending October 8. The price per pound increased 1.9 cents from the previous week. The price for US 500 pound Barrels adjusted to 38 percent moisture averaged \$1.49 per pound, down 3.0 cents from the previous week.

Butter prices received for 25 kilogram and 68 pound boxes meeting USDA Grade AA standards averaged \$1.65 per pound for the week ending October 8. The U.S. price per pound decreased 4.2 cents from the previous week.

Nonfat Dry Milk prices received for bag, tote and tanker sales meeting USDA Extra Grade or USPH Grade A standards averaged 96.9 cents per pound for the week ending October 8. The U.S. price per pound decreased 1.3 cents from the previous week.

Dry Whey prices received for bag, tote and tanker sales meeting USDA Extra Grade standards averaged 30.4 cents per pound for the week ending October 8. The U.S. price per pound increased 0.5 cent from the previous week.

Cheddar Cheese Prices, U.S. 40 lb. Blocks vs. 500 lb. Barrels



Cheddar Cheese Prices by Style and Region

Style and Region	Week Ending				
	Oct 8, 2005	Oct 1, 2005	Sep 24, 2005	Sep 17, 2005	Sep 10, 2005
	<i>Dol./Lb.</i>	<i>Dol./Lb.</i>	<i>Dol./Lb.</i>	<i>Dol./Lb.</i>	<i>Dol./Lb.</i>
40 Lb. Blocks					
Avg. Price ²					
MN/WI	1.6249	1.5875	1.5671	1.5347	1.5138
Oth Sts	1.5693	1.5508	1.5199	1.4676	1.4461
US	1.5726	1.5533	1.5242	1.4732	1.4515
	<i>Pounds</i>	<i>Pounds</i>	<i>Pounds</i>	<i>Pounds</i>	<i>Pounds</i>
Sales Volume ³					
MN/WI	519,147	601,313	832,837	615,450	618,574
Oth Sts	8,449,710	8,256,415	8,218,590	6,833,218	7,065,120
US	8,968,857	8,857,728	9,051,427	7,448,668	7,683,694
	<i>Dol./Lb.</i>	<i>Dol./Lb.</i>	<i>Dol./Lb.</i>	<i>Dol./Lb.</i>	<i>Dol./Lb.</i>
500 Lb. Barrels					
Avg. Price ²					
MN/WI	1.5252	1.5863	1.5759	1.5582	1.5629
Oth Sts	1.5802	1.5992	1.5878	1.5824	1.5821
US	1.5566	1.5945	1.5839	1.5736	1.5743
	<i>Dol./Lb.</i>	<i>Dol./Lb.</i>	<i>Dol./Lb.</i>	<i>Dol./Lb.</i>	<i>Dol./Lb.</i>
Price Adj. to 38% Moisture					
MN/WI	1.4730	1.5303	1.5248	1.5052	1.5051
Oth Sts	1.4951	1.5073	1.4940	1.4892	1.4830
US	1.4857	1.5155	1.5039	1.4949	1.4919
	<i>Pounds</i>	<i>Pounds</i>	<i>Pounds</i>	<i>Pounds</i>	<i>Pounds</i>
Sales Volume ³					
MN/WI	4,044,742	3,378,345	3,538,294	3,704,073	3,734,919
Oth Sts	5,367,267	5,965,665	7,259,033	6,443,411	5,379,828
US	9,412,009	9,344,010	10,797,327	10,147,484	9,114,747
	<i>Percent</i>	<i>Percent</i>	<i>Percent</i>	<i>Percent</i>	<i>Percent</i>
Moisture Content					
MN/WI	35.80	35.73	35.92	35.82	35.62
Oth Sts	34.47	34.22	34.11	34.12	33.86
US	35.04	34.77	34.70	34.74	34.58

¹ Revised.

² Prices weighted by volumes reported.

³ Sales as reported by participating manufacturers.

Butter Prices

Region	Week Ending				
	Oct 8, 2005	Oct 1, 2005 ¹	Sep 24, 2005	Sep 17, 2005	Sep 10, 2005
	<i>Dol./Lb.</i>	<i>Dol./Lb.</i>	<i>Dol./Lb.</i>	<i>Dol./Lb.</i>	<i>Dol./Lb.</i>
Avg. Price ²					
US	1.6456	1.6877	1.7005	1.6798	1.6882
	<i>Pounds</i>	<i>Pounds</i>	<i>Pounds</i>	<i>Pounds</i>	<i>Pounds</i>
Sales Volume ³					
US	2,223,641	2,324,440	2,929,344	2,526,504	1,739,459

¹ Revised.

² Prices weighted by volumes reported.

³ Sales as reported by participating manufacturers.

Nonfat Dry Milk Prices

Region	Week Ending				
	Oct 8, 2005	Oct 1, 2005 ¹	Sep 24, 2005 ¹	Sep 17, 2005	Sep 10, 2005
Avg. Price ² US	<i>Dol./Lb.</i> 0.9686	<i>Dol./Lb.</i> 0.9816	<i>Dol./Lb.</i> 0.9669	<i>Dol./Lb.</i> 0.9751	<i>Dol./Lb.</i> 0.9685
Sales Volume ³ US	<i>Pounds</i> 11,463,938	<i>Pounds</i> 18,448,417	<i>Pounds</i> 17,141,378	<i>Pounds</i> 14,382,919	<i>Pounds</i> 11,841,178

¹ Revised.

² Prices weighted by volumes reported.

³ Sales as reported by participating manufacturers.

Dry Whey Prices

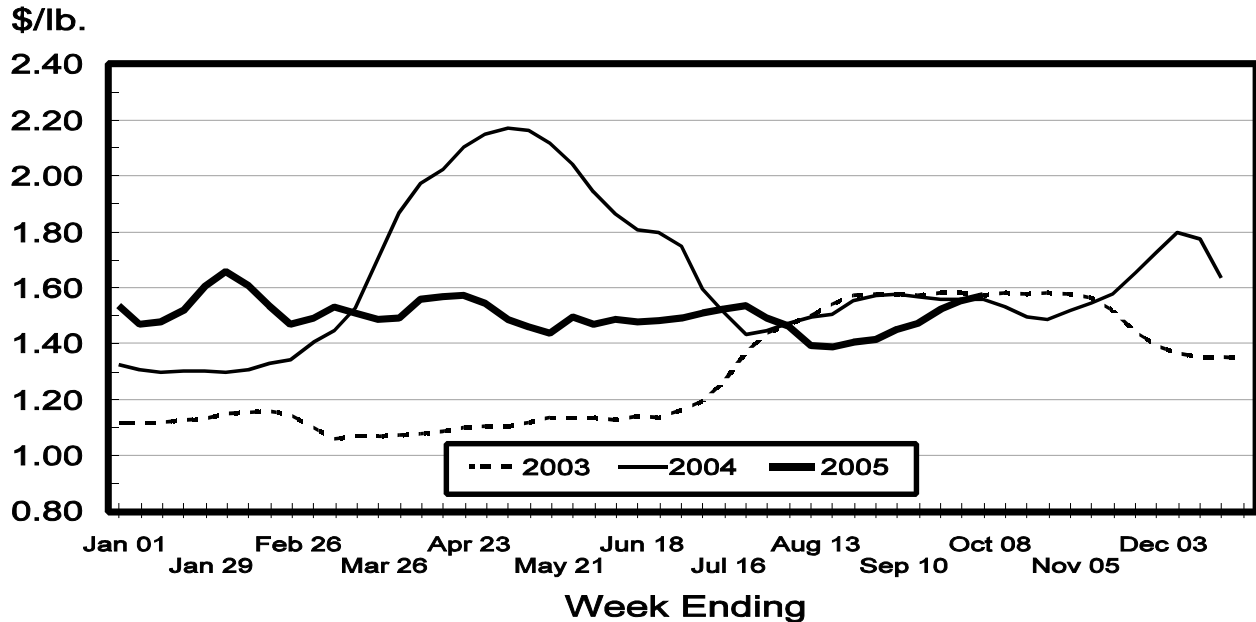
Region	Week Ending				
	Oct 8, 2005	Oct 1, 2005 ¹	Sep 24, 2005	Sep 17, 2005	Sep 10, 2005
Avg. Price ² US	<i>Dol./Lb.</i> 0.3040	<i>Dol./Lb.</i> 0.2992	<i>Dol./Lb.</i> 0.2994	<i>Dol./Lb.</i> 0.2964	<i>Dol./Lb.</i> 0.2946
Sales Volume ³ US	<i>Pounds</i> 10,025,879	<i>Pounds</i> 11,040,764	<i>Pounds</i> 11,642,656	<i>Pounds</i> 9,804,572	<i>Pounds</i> 9,754,685

¹ Revised.

² Prices weighted by volumes reported.

³ Sales as reported by participating manufacturers.

Cheddar Cheese Prices, U.S. 40 lb. Blocks



Procedures and Reliability: Price information included in this report is provided each week by manufacturers of these products. Data are collected by fax and electronic mail each week for the previous week. Price information collected is for the (wholesale) point of sale for:

- 1) Natural, unaged cheddar cheese in 40 pound blocks and 500 pound barrels.
- 2) Boxes of butter meeting USDA Grade AA standards, 80% butterfat, salted, fresh or storage.
- 3) USDA Extra Grade edible nonhygroscopic dry whey.
- 4) USDA Extra Grade and USPH Grade A, nonfortified nonfat dry milk.

A transaction is complete when the product is "shipped out" and title transfers. Resales of purchased product, forward pricing and intra-company sales are excluded.

Revision Policy: Price data for the prior 4 weeks are subject to revision based on late reports.

The U.S. Department of Agriculture (USDA) prohibits discrimination in all its programs and activities on the basis of race, color, national origin, age, disability, and where applicable, sex, marital status, familial status, parental status, religion, sexual orientation, genetic information, political beliefs, reprisal, or because all or part of an individual's income is derived from any public assistance program. (Not all prohibited bases apply to all programs.) Persons with disabilities who require alternative means for communication of program information (Braille, large print, audiotape, etc.) should contact USDA's TARGET Center at (202) 720-2600 (voice and TDD).

To file a complaint of discrimination, write to USDA, Director, Office of Civil Rights, 1400 Independence Avenue, S.W., Washington, D.C. 20250-9410, or call (800) 795-3272 (voice) or (202) 720-6382 (TDD). USDA is an equal opportunity provider and employer.

ACCESS TO REPORTS!!

For your convenience, there are several ways to obtain NASS reports, data products, and services:

INTERNET ACCESS

All NASS reports are available free of charge on the worldwide Internet. For access, connect to the Internet and go to the NASS Home Page at: www.usda.gov/nass/. Select "Today's Reports" or Publications and then Reports Calendar or Publications and then Search, by Title or Subject.

E-MAIL SUBSCRIPTION

All NASS reports are available by subscription free of charge direct to your e-mail address. Starting with the NASS Home Page at www.usda.gov/nass/, click on **Publications**, then click on the **Subscribe by E-mail** button which takes you to the page describing e-mail delivery of reports. Finally, click on **Go to the Subscription Page** and follow the instructions.

PRINTED REPORTS OR DATA PRODUCTS

CALL OUR TOLL-FREE ORDER DESK: 800-999-6779 (U.S. and Canada)
Other areas, please call 703-605-6220 FAX: 703-605-6900
(Visa, MasterCard, check, or money order acceptable for payment.)

ASSISTANCE

For **assistance** with general agricultural statistics or further information about NASS or its products or services, contact the **Agricultural Statistics Hotline** at **800-727-9540**, 7:30 a.m. to 4:00 p.m. ET, or e-mail: nass@nass.usda.gov.
