



# NASS

FACT FINDERS FOR AGRICULTURE  
UNITED STATES DEPARTMENT OF AGRICULTURE

Washington, D.C.

# Dairy Products Prices

Released April 7, 2006, by the National Agricultural Statistics Service (NASS), Agricultural Statistics Board, U.S. Department of Agriculture. For information on *Dairy Products Prices* call Charmaine Wilson at 202-690-2168, office hours 7:00 a.m. to 4:30 p.m. ET.

## Dairy Products Prices Highlights

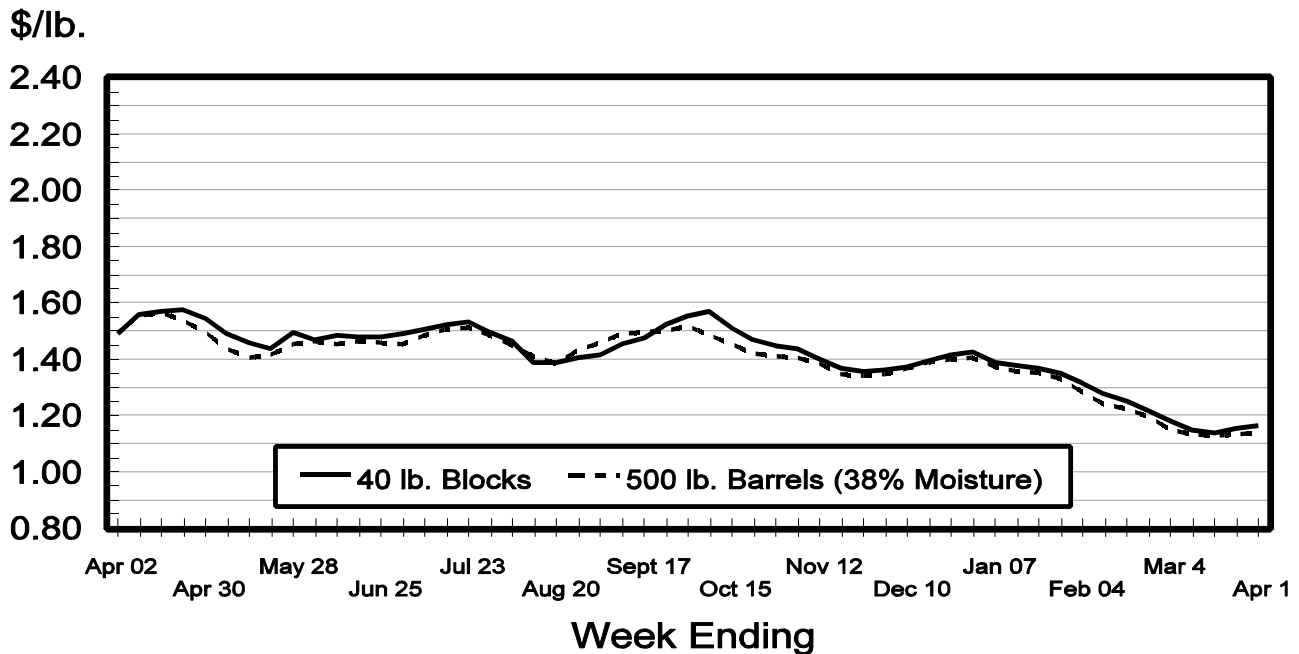
**Cheddar Cheese** prices received for US 40 pound Blocks averaged \$1.17 per pound for the week ending April 1. The price per pound increased 1.2 cents from the previous week. The price for US 500 pound Barrels adjusted to 38 percent moisture averaged \$1.14 per pound, up 0.4 cent from the previous week.

**Butter** prices received for 25 kilogram and 68 pound boxes meeting USDA Grade AA standards averaged \$1.14 per pound for the week ending April 1. The U.S. price per pound decreased 0.9 cent from the previous week.

**Nonfat Dry Milk** prices received for bag, tote and tanker sales meeting USDA Extra Grade or USPH Grade A standards averaged 84.2 cents per pound for the week ending April 1. The U.S. price per pound decreased 1.8 cents from the previous week.

**Dry Whey** prices received for bag, tote and tanker sales meeting USDA Extra Grade standards averaged 31.8 cents per pound for the week ending April 1. The U.S. price per pound decreased 1.2 cents from the previous week.

## Cheddar Cheese Prices, U.S. 40 lb. Blocks vs. 500 lb. Barrels



**Cheddar Cheese Prices by Style and Region**

Style and Region	Week Ending				
	Apr 1, 2006	Mar 25, 2006	Mar 18, 2006	Mar 11, 2006	Mar 4, 2006
	<i>Dol./Lb.</i>	<i>Dol./Lb.</i>	<i>Dol./Lb.</i>	<i>Dol./Lb.</i>	<i>Dol./Lb.</i>
40 Lb. Blocks					
Avg. Price <sup>2</sup>					
MN/WI	1.2307	1.2029	1.1835	1.1722	1.2381
Oth Sts	1.1567	1.1480	1.1362	1.1469	1.1758
US	1.1655	1.1531	1.1405	1.1491	1.1806
	<i>Pounds</i>	<i>Pounds</i>	<i>Pounds</i>	<i>Pounds</i>	<i>Pounds</i>
Sales Volume <sup>3</sup>					
MN/WI	969,294	818,310	810,354	752,530	716,529
Oth Sts	7,205,626	8,085,227	8,120,598	7,861,104	8,548,809
US	8,174,920	8,903,537	8,930,952	8,613,634	9,265,338
	<i>Dol./Lb.</i>	<i>Dol./Lb.</i>	<i>Dol./Lb.</i>	<i>Dol./Lb.</i>	<i>Dol./Lb.</i>
500 Lb. Barrels					
Avg. Price <sup>2</sup>					
MN/WI	1.1937	1.1900	1.1760	1.1882	1.1946
Oth Sts	1.1927	1.1860	1.1847	1.1988	1.2231
US	1.1932	1.1878	1.1810	1.1950	1.2132
Price Adj. to 38% Moisture					
MN/WI	1.1490	1.1468	1.1355	1.1457	1.1503
Oth Sts	1.1264	1.1201	1.1195	1.1264	1.1495
US	1.1363	1.1325	1.1263	1.1331	1.1498
	<i>Pounds</i>	<i>Pounds</i>	<i>Pounds</i>	<i>Pounds</i>	<i>Pounds</i>
Sales Volume <sup>3</sup>					
MN/WI	4,317,793	4,681,167	4,246,124	3,736,146	3,677,463
Oth Sts	5,361,540	5,277,344	5,618,043	6,821,383	6,879,440
US	9,679,333	9,958,511	9,864,167	10,557,529	10,556,903
	<i>Percent</i>	<i>Percent</i>	<i>Percent</i>	<i>Percent</i>	<i>Percent</i>
Moisture Content					
MN/WI	35.58	35.67	35.79	35.70	35.61
Oth Sts	34.35	34.36	34.38	34.02	34.03
US	34.90	34.97	34.99	34.61	34.58

<sup>1</sup> Revised.

<sup>2</sup> Prices weighted by volumes reported.

<sup>3</sup> Sales as reported by participating manufacturers.

**Butter Prices**

Region	Week Ending				
	Apr 1, 2006	Mar 25, 2006 <sup>1</sup>	Mar 18, 2006	Mar 11, 2006	Mar 4, 2006
	<i>Dol./Lb.</i>	<i>Dol./Lb.</i>	<i>Dol./Lb.</i>	<i>Dol./Lb.</i>	<i>Dol./Lb.</i>
Avg. Price <sup>2</sup>					
US	1.1437	1.1530	1.1524	1.1712	1.1786
	<i>Pounds</i>	<i>Pounds</i>	<i>Pounds</i>	<i>Pounds</i>	<i>Pounds</i>
Sales Volume <sup>3</sup>					
US	3,300,605	3,143,032	2,860,827	3,050,675	3,727,437

<sup>1</sup> Revised.

<sup>2</sup> Prices weighted by volumes reported.

<sup>3</sup> Sales as reported by participating manufacturers.

**Nonfat Dry Milk Prices**

Region	Week Ending				
	Apr 1, 2006	Mar 25, 2006 <sup>1</sup>	Mar 18, 2006 <sup>1</sup>	Mar 11, 2006	Mar 4, 2006
Avg. Price <sup>2</sup> US	<i>Dol./Lb.</i> 0.8418	<i>Dol./Lb.</i> 0.8599	<i>Dol./Lb.</i> 0.8581	<i>Dol./Lb.</i> 0.8695	<i>Dol./Lb.</i> 0.8838
Sales Volume <sup>3</sup> US	<i>Pounds</i> 37,502,894	<i>Pounds</i> 17,386,393	<i>Pounds</i> 25,412,715	<i>Pounds</i> 17,445,283	<i>Pounds</i> 32,919,915

<sup>1</sup> Revised.

<sup>2</sup> Prices weighted by volumes reported.

<sup>3</sup> Sales as reported by participating manufacturers.

**Dry Whey Prices**

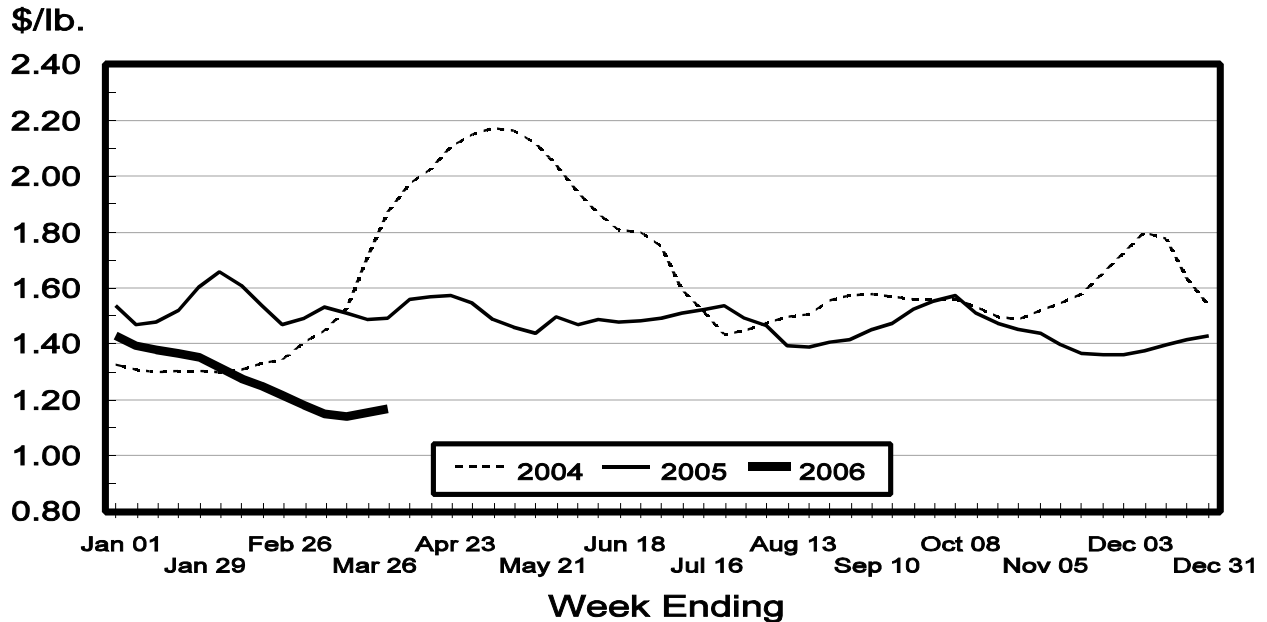
Region	Week Ending				
	Apr 1, 2006	Mar 25, 2006	Mar 18, 2006	Mar 11, 2006	Mar 4, 2006
Avg. Price <sup>2</sup> US	<i>Dol./Lb.</i> 0.3176	<i>Dol./Lb.</i> 0.3293	<i>Dol./Lb.</i> 0.3388	<i>Dol./Lb.</i> 0.3452	<i>Dol./Lb.</i> 0.3506
Sales Volume <sup>3</sup> US	<i>Pounds</i> 14,207,025	<i>Pounds</i> 10,954,857	<i>Pounds</i> 11,620,666	<i>Pounds</i> 11,223,197	<i>Pounds</i> 10,865,628

<sup>1</sup> Revised.

<sup>2</sup> Prices weighted by volumes reported.

<sup>3</sup> Sales as reported by participating manufacturers.

## Cheddar Cheese Prices, U.S. 40 lb. Blocks



**Procedures and Reliability:** Price information included in this report is provided each week by manufacturers of these products. Data are collected by fax and electronic mail each week for the previous week. Price information collected is for the (wholesale) point of sale for:

- 1) Natural, unaged cheddar cheese in 40 pound blocks and 500 pound barrels.
- 2) Boxes of butter meeting USDA Grade AA standards, 80% butterfat, salted, fresh or storage.
- 3) USDA Extra Grade edible nonhygroscopic dry whey.
- 4) USDA Extra Grade and USPH Grade A, nonfortified nonfat dry milk.

A transaction is complete when the product is "shipped out" and title transfers. Resales of purchased product, forward pricing and intra-company sales are excluded.

**Revision Policy:** Price data for the prior 4 weeks are subject to revision based on late reports.

The U.S. Department of Agriculture (USDA) prohibits discrimination in all its programs and activities on the basis of race, color, national origin, age, disability, and where applicable, sex, marital status, familial status, parental status, religion, sexual orientation, genetic information, political beliefs, reprisal, or because all or part of an individual's income is derived from any public assistance program. (Not all prohibited bases apply to all programs.) Persons with disabilities who require alternative means for communication of program information (Braille, large print, audiotape, etc.) should contact USDA's TARGET Center at (202) 720-2600 (voice and TDD).

To file a complaint of discrimination, write to USDA, Director, Office of Civil Rights, 1400 Independence Avenue, S.W., Washington, D.C. 20250-9410, or call (800) 795-3272 (voice) or (202) 720-6382 (TDD). USDA is an equal opportunity provider and employer.

## **ACCESS TO REPORTS!!**

---

For your convenience, there are several ways to obtain NASS reports, data products, and services:

### **INTERNET ACCESS**

All NASS reports are available free of charge on the worldwide Internet. For access, connect to the Internet and go to the NASS Home Page at: [www.nass.usda.gov](http://www.nass.usda.gov).

### **E-MAIL SUBSCRIPTION**

All NASS reports are available by subscription free of charge direct to your e-mail address. Starting with the NASS Home Page at [www.nass.usda.gov](http://www.nass.usda.gov), under the right navigation, *Receive reports by Email*, click on **National or State**. Follow the instructions on the screen.

-----

### **PRINTED REPORTS OR DATA PRODUCTS**

**CALL OUR TOLL-FREE ORDER DESK: 800-999-6779 (U.S. and Canada)**  
**Other areas, please call 703-605-6220      FAX: 703-605-6900**  
**(Visa, MasterCard, check, or money order acceptable for payment.)**

-----

### **ASSISTANCE**

For **assistance** with general agricultural statistics or further information about NASS or its products or services, contact the **Agricultural Statistics Hotline** at **800-727-9540**, 7:30 a.m. to 4:00 p.m. ET, or e-mail: [nass@nass.usda.gov](mailto:nass@nass.usda.gov).