

Dairy Products Prices

Released January 18, 2008, by the National Agricultural Statistics Service (NASS), Agricultural Statistics Board, U.S. Department of Agriculture. For information on *Dairy Products Prices* call Joe Gaynor at 202-690-2168, office hours 7:00 a.m. to 4:30 p.m. ET.

Dairy Products Prices Highlights

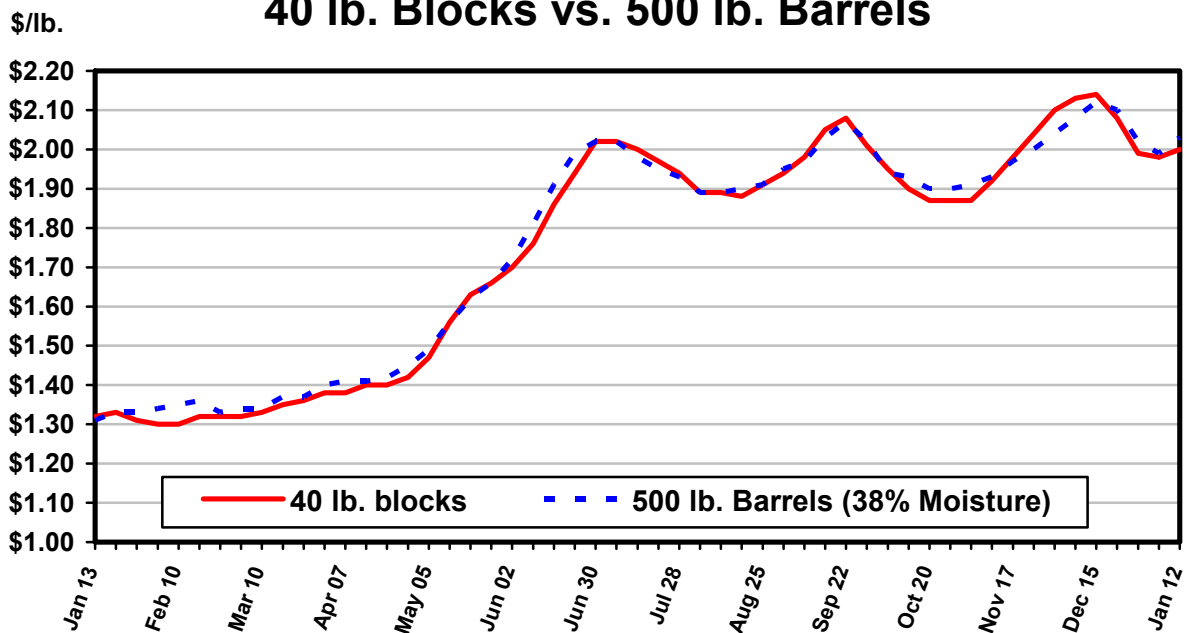
Cheddar Cheese prices received for US 40 pound Blocks averaged \$2.00 per pound for the week ending January 12. The price per pound increased 1.5 cents from the previous week. The price for US 500 pound Barrels adjusted to 38 percent moisture averaged \$2.03 per pound, up 4.1 cents from the previous week.

Butter prices received for 25 kilogram and 68 pound boxes meeting USDA Grade AA standards averaged \$1.24 per pound for the week ending January 12. The U.S. price per pound decreased 3.8 cents from the previous week.

Nonfat Dry Milk prices received for bag, tote and tanker sales meeting USDA Extra Grade or USPH Grade A standards averaged \$1.65 per pound for the week ending January 12. The U.S. price per pound decreased 8.7 cents from the previous week.

Dry Whey prices received for bag, tote and tanker sales meeting USDA Extra Grade standards averaged 43.6 cents per pound for the week ending January 12. The U.S. price per pound decreased 0.6 cents from the previous week.

Cheddar Cheese Prices, U.S. 40 lb. Blocks vs. 500 lb. Barrels



Cheddar Cheese Prices by Style and Region

Style and Region	Week Ending				
	Jan 12, 2008	Jan 5, 2008	Dec 29, 2007	Dec 22, 2007	Dec 15, 2007
	<i>Dol./Lb.</i>	<i>Dol./Lb.</i>	<i>Dol./Lb.</i>	<i>Dol./Lb.</i>	<i>Dol./Lb.</i>
40 Lb. Blocks					
Avg. Price ¹					
MN/WI	2.1427	2.0446	1.9611	2.0962	*2.2579
Oth Sts	1.9836	1.9769	1.9912	2.0828	2.1304
US	1.9956	1.9803	1.9891	2.0840	*2.1403
	<i>Pounds</i>	<i>Pounds</i>	<i>Pounds</i>	<i>Pounds</i>	<i>Pounds</i>
Sales Volume ²					
MN/WI	915,719	497,962	551,768	911,549	788,650
Oth Sts	11,257,777	9,515,074	7,576,146	9,479,431	9,415,850
US	12,173,496	10,013,036	8,127,914	10,390,980	10,204,500
	<i>Dol./Lb.</i>	<i>Dol./Lb.</i>	<i>Dol./Lb.</i>	<i>Dol./Lb.</i>	<i>Dol./Lb.</i>
500 Lb. Barrels					
Avg. Price ¹					
MN/WI	2.1403	2.0576	2.0569	2.2140	2.2704
Oth Sts	2.1443	*2.1291	2.1612	2.1903	2.2103
US	2.1428	*2.1002	2.1257	2.2002	2.2327
Price Adj. to 38% Moisture					
MN/WI	2.0439	1.9641	1.9687	2.1300	2.1655
Oth Sts	2.0237	*2.0080	2.0440	2.0705	2.0909
US	2.0309	*1.9904	2.0186	2.0951	2.1186
	<i>Pounds</i>	<i>Pounds</i>	<i>Pounds</i>	<i>Pounds</i>	<i>Pounds</i>
Sales Volume ²					
MN/WI	3,462,460	3,182,938	2,773,828	4,418,382	3,823,958
Oth Sts	6,258,612	*4,692,218	5,377,809	6,171,031	6,416,063
US	9,721,072	*7,875,156	8,151,637	10,589,413	10,240,021
	<i>Percent</i>	<i>Percent</i>	<i>Percent</i>	<i>Percent</i>	<i>Percent</i>
Moisture Content					
MN/WI	35.08	35.05	35.22	35.56	35.00
Oth Sts	34.31	*34.26	34.44	34.41	34.46
US	34.58	34.58	34.71	34.89	34.66

* Revised.

¹ Prices weighted by volumes reported.

² Sales as reported by participating manufacturers.

Butter Prices

Region	Week Ending				
	Jan 12, 2008	Jan 5, 2008	Dec 29, 2007	Dec 22, 2007	Dec 15, 2007
	<i>Dol./Lb.</i>	<i>Dol./Lb.</i>	<i>Dol./Lb.</i>	<i>Dol./Lb.</i>	<i>Dol./Lb.</i>
Avg. Price ¹					
US	1.2413	*1.2788	1.3141	1.3201	1.3162
	<i>Pounds</i>	<i>Pounds</i>	<i>Pounds</i>	<i>Pounds</i>	<i>Pounds</i>
Sales Volume ²					
US	5,380,913	4,556,410	2,909,821	3,336,868	4,270,974

* Revised.

¹ Prices weighted by volumes reported.

² Sales as reported by participating manufacturers.

Nonfat Dry Milk Prices

Region	Week Ending				
	Jan 12, 2008	Jan 5, 2008	Dec 29, 2007	Dec 22, 2007	Dec 15, 2007
Avg. Price ¹ US	<i>Dol./Lb.</i> 1.6452	<i>Dol./Lb.</i> *1.7318	<i>Dol./Lb.</i> 1.6457	<i>Dol./Lb.</i> 1.8441	<i>Dol./Lb.</i> 1.8237
Sales Volume ² US	<i>Pounds</i> 9,806,067	<i>Pounds</i> *12,139,211	<i>Pounds</i> *13,529,791	<i>Pounds</i> 9,410,059	<i>Pounds</i> 13,035,215

* Revised.

¹ Prices weighted by volumes reported.

² Sales as reported by participating manufacturers.

Dry Whey Prices

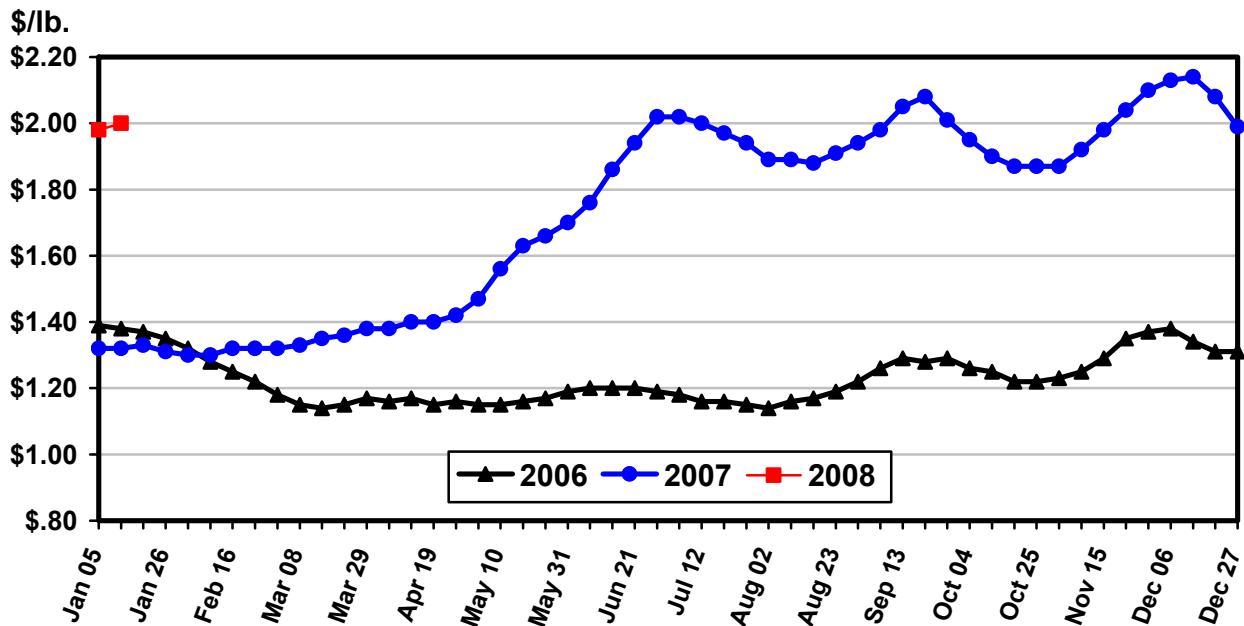
Region	Week Ending				
	Jan 12, 2008	Jan 5, 2008	Dec 29, 2007	Dec 22, 2007	Dec 15, 2007
Avg. Price ¹ US	<i>Dol./Lb.</i> 0.4359	<i>Dol./Lb.</i> *0.4415	<i>Dol./Lb.</i> *0.4448	<i>Dol./Lb.</i> 0.4464	<i>Dol./Lb.</i> 0.4584
Sales Volume ² US	<i>Pounds</i> 9,822,573	<i>Pounds</i> *6,085,368	<i>Pounds</i> *6,029,334	<i>Pounds</i> *9,542,237	<i>Pounds</i> 9,260,032

* Revised.

¹ Prices weighted by volumes reported.

² Sales as reported by participating manufacturers.

Cheddar Cheese Prices, U.S. 40 lb. Blocks



Procedures and Reliability: The Weekly Dairy Product Prices program consists of 92 qualifying manufacturing plants. There are 11 plants in the Atlantic Region, 26 plants in the East North Central Region, 3 plants in the South Central Region, 34 plants in the West Region, and 18 plants in the West North Central Region. Plants that report for multiple commodities are only counted once. Price information included in this report is provided each week by manufacturers of these products. Data are collected by fax and electronic mail each week for the previous week. Price information collected is for the (wholesale) point of sale for:

- 1) Natural, unaged cheddar cheese in 40 pound blocks and 500 pound barrels.
- 2) Boxes of butter meeting USDA Grade AA standards, 80% butterfat, salted, fresh or storage.
- 3) USDA Extra Grade edible nonhygroscopic dry whey.
- 4) USDA Extra Grade and USPH Grade A, nonfortified nonfat dry milk.

A transaction is complete when the product is "shipped out" and title transfers. Resales of purchased product, forward pricing and intra-company sales are excluded.

Revision Policy: Price data for the prior 4 weeks are subject to revision.

The U.S. Department of Agriculture (USDA) prohibits discrimination in all its programs and activities on the basis of race, color, national origin, age, disability, and where applicable, sex, marital status, familial status, parental status, religion, sexual orientation, genetic information, political beliefs, reprisal, or because all or part of an individual's income is derived from any public assistance program. (Not all prohibited bases apply to all programs.) Persons with disabilities who require alternative means for communication of program information (Braille, large print, audiotape, etc.) should contact USDA's TARGET Center at (202) 720-2600 (voice and TDD).

To file a complaint of discrimination, write to USDA, Director, Office of Civil Rights, 1400 Independence Avenue, S.W., Washington, D.C. 20250-9410, or call (800) 795-3272 (voice) or (202) 720-6382 (TDD). USDA is an equal opportunity provider and employer.

ACCESS TO REPORTS!!

For your convenience, there are several ways to obtain NASS reports, data products, and services:

INTERNET ACCESS

All NASS reports are available free of charge on the worldwide Internet. For access, connect to the Internet and go to the NASS Home Page at: www.nass.usda.gov.

E-MAIL SUBSCRIPTION

All NASS reports are available by subscription free of charge direct to your e-mail address. Starting with the NASS Home Page at www.nass.usda.gov, under the right navigation, *Receive reports by Email*, click on **National** or **State**. Follow the instructions on the screen.

PRINTED REPORTS OR DATA PRODUCTS

CALL OUR TOLL-FREE ORDER DESK: 800-999-6779 (U.S. and Canada)
Other areas, please call 703-605-6220 FAX: 703-605-6900
(Visa, MasterCard, check, or money order acceptable for payment.)

ASSISTANCE

For **assistance** with general agricultural statistics or further information about NASS or its products or services, contact the **Agricultural Statistics Hotline** at **800-727-9540**, 7:30 a.m. to 4:00 p.m. ET, or e-mail: nass@nass.usda.gov.