



Farm Labor

Released November 17, 2000, by the National Agricultural Statistics Service (NASS), Agricultural Statistics Board, U.S. Department of Agriculture. For information on "Farm Labor" call Steve Logan at 202-690-3228, office hours 8:00 a.m. to 4:30 p.m. ET.

Hired Workers Down 3 Percent, Wage Rates Up 6 Percent From a Year Ago

There were 1.24 million hired workers on the Nation's farms and ranches the week of October 8-14, 2000, down 3 percent from a year ago. There were 952,000 workers hired directly by farm operators. Agricultural service employees on farms and ranches made up the remaining 285,000 workers. Migrant workers accounted for 11.9 percent of the October hired workforce compared to 12.3 percent last year.

Farm operators paid their hired workers an average wage of \$8.29 per hour during the October 2000 survey week, up 46 cents from a year earlier. Field workers received an average of \$7.74 per hour, up 43 cents from last October. Livestock workers earned \$7.84 per hour compared with \$7.43 a year earlier. The Field and Livestock worker combined wage rate was up 43 cents from last year.

Number of hours worked averaged 41.2 hours for hired workers during the survey week compared with 42.5 hours a year ago.

The largest increases in number of hired farm workers over last year occurred in the Northeast II (Delaware, Maryland, New Jersey, and Pennsylvania), Corn Belt II (Iowa and Missouri), Southern Plains (Oklahoma and Texas), and Northeast I (New England and New York) regions. Harvesting of field crops, fruits, and vegetables in Northeast II was active during the survey week. In Corn Belt II, corn and soybean harvest continued at a rapid pace before weekend rain arrived in the region. After rain at the beginning of the survey week, small grain planting in the Southern Plains progressed quickly. In Northeast I, harvesting, packing, and grading of fruits and vegetables, normally completed by this time of year, were still active.

The largest declines in number of hired farm workers from a year ago were in the Northern Plains (North Dakota, South Dakota, Nebraska, and Kansas), Corn Belt I (Illinois, Indiana, and Ohio), and Florida regions. Weeks of dry weather in the Northern Plains have row crop harvest ahead of schedule and winter wheat planting below normal due to dry soil conditions. In Corn Belt I, cooler weather delayed ripening of late-maturing crops and limited harvest progress in parts of the region. Cooler weather in Florida slowed cotton and peanut maturity, and dry soils delayed planting of winter forage in northern areas of the region.

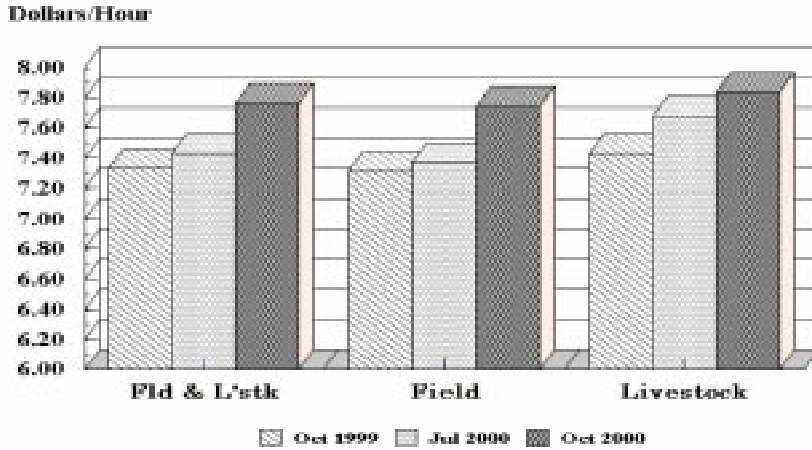
The 2000 annual averages for the Nation's self employed, unpaid, and hired workers were 1.57 million, 487,500 and 890,300, respectively. The self employed worker annual average is up 1 percent from a year ago. Unpaid and hired worker annual averages were down from last year at 1 and 4 percent, respectively.

The 2000 U.S. hired worker annual average wage rate was \$8.10, up 4 percent from the 1999 annual average wage rate of \$7.77. The Field and Livestock worker combined annual average wage rate was \$7.54, up 4 percent from last year's annual average wage rate of \$7.22.

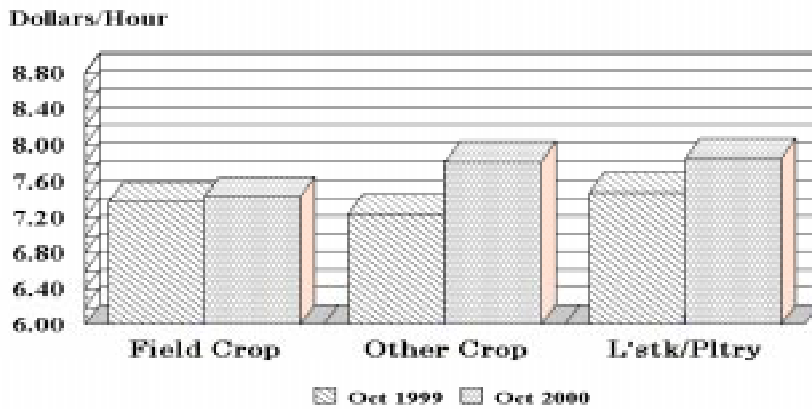
Revisions:

The July 2000 hired workers estimates were revised for the U.S. and California. These revisions were based on additional information received in California as part of the ongoing Federal-State cooperative program.

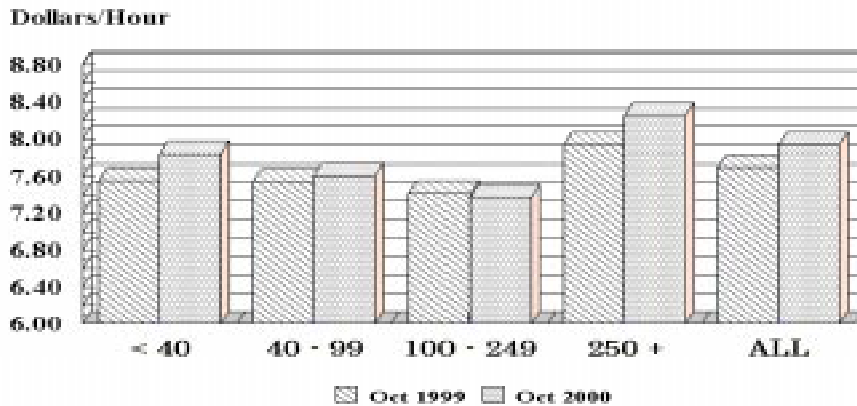
U.S. Wage Rates by Type of Worker



Wage Rate of Field & Livestock Workers by Type of Farm



Wage Rates of All Hired Workers by Economic Class of Farm



**Farm Labor: Employment and Wage Rates, United States,
October 8-14, 2000, with Comparisons ¹**

Farm Employment	October 10-16, 1999	July 9-15, 2000	October 8-14, 2000
	<i>1,000</i>	<i>1,000</i>	<i>1,000</i>
Hired Workers	989	*1,084	952
150 Days or More	665	*724	662
149 Days or Less	324	*360	290
Agricultural Services Workers Working on Farms	290	*293	285
Hired Farm & Service Workers	1,279	*1,377	1,237
	<i>Percent</i>	<i>Percent</i>	<i>Percent</i>
Migrant Workers Percent of Hired Farm & Service Workers	12.3	*11.5	11.9
	<i>Hours per Week</i>	<i>Hours per Week</i>	<i>Hours per Week</i>
Hours Worked Hired	42.5	*40.0	41.2
	<i>Dollars per Hour</i>	<i>Dollars per Hour</i>	<i>Dollars per Hour</i>
Wage Rates for All Hired Workers ^{2 3}	7.83	*7.93	8.29
Type of Worker			
Field & Livestock Combined	7.33	*7.43	7.76
Field	7.31	*7.37	7.74
Livestock	7.43	*7.68	7.84

* Revised.

¹ Excludes AK.

² Benefits, such as housing and meals, are provided some workers but the values are not included in the wage rates.

³ Excludes Agricultural Service Workers.

**Hired Workers: Number and Hours Worked by Region
and United States, October 8-14, 2000 ¹**

U.S. and Region ²	Hired			
	Number of Workers	Expected to be Employed		Number of Hours Worked
		150 Days or More	149 Days or Less	
	<i>1,000</i>	<i>1,000</i>	<i>1,000</i>	<i>Hours per Week</i>
Northeast I	50	32	18	41.4
Northeast II	45	33	12	41.7
Appalachian I	40	23	17	36.2
Appalachian II	33	16	17	37.8
Southeast	33	22	11	35.1
FL	50	43	7	38.9
Lake	71	49	22	40.2
Cornbelt I	56	35	21	39.7
Cornbelt II	31	20	11	37.3
Delta	42	31	11	45.0
Northern Plains	33	24	9	54.4
Southern Plains	61	49	12	37.3
Mountain I	34	22	12	39.4
Mountain II	24	16	8	40.9
Mountain III	21	18	3	43.6
Pacific	78	38	40	42.3
CA	242	184	58	43.2
HI	8	7	1	35.8
US ³	952	662	290	41.2

¹ Excludes Agricultural Service Workers.

² Region map on page 13.

³ Excludes AK.

**Hired Workers: Wage Rates for Type of Workers and All Hired Workers
by Region and United States, October 8-14, 2000 ¹**

U.S. and Region ²	Type of Worker			Wage Rates for All Hired Workers
	Field	Livestock	Field & Lvstk Combined	
	<i>Dollars per Hour</i>	<i>Dollars per Hour</i>	<i>Dollars per Hour</i>	<i>Dollars per Hour</i>
Northeast I	8.77	7.98	8.62	9.11
Northeast II	7.44	6.67	7.26	8.04
Appalachian I	7.21	7.56	7.28	7.65
Appalachian II	6.40	7.03	6.57	7.03
Southeast	6.89	7.02	6.93	7.28
FL	8.00	7.30	7.86	8.72
Lake	8.40	8.35	8.39	9.05
Cornbelt I	8.07	7.86	8.03	8.39
Cornbelt II	7.41	8.19	7.72	7.90
Delta	6.76	7.13	6.82	7.06
Northern Plains	8.21	8.23	8.22	8.41
Southern Plains	6.71	7.30	6.95	7.59
Mountain I	7.39	8.10	7.64	7.80
Mountain II	7.29	7.71	7.44	7.82
Mountain III	6.71	7.73	6.96	7.52
Pacific	8.79	9.00	8.81	9.24
CA	7.70	8.65	7.79	8.44
HI ⁴	9.05		9.07	10.73
US ³	7.74	7.84	7.76	8.29

¹ Excludes Agricultural Service Workers.

² Region map on page 13.

³ Excludes AK.

⁴ Insufficient data for livestock.

**Hired Workers: Number and Hours Worked by Region
and United States, July 9-15, 2000 ¹**

U.S. and Region ²	Hired			
	Number of Workers	Expected to be Employed		Number of Hours Worked
		150 Days or More	149 Days or Less	
	<i>1,000</i>	<i>1,000</i>	<i>1,000</i>	<i>Hours per Week</i>
Northeast I	58	37	21	38.9
Northeast II	54	34	20	38.7
Appalachian I	56	33	23	37.5
Appalachian II	42	21	21	30.4
Southeast	39	25	14	33.7
FL	46	42	4	42.0
Lake	73	50	23	40.0
Cornbelt I	69	43	26	33.6
Cornbelt II	30	20	10	34.7
Delta	44	29	15	39.7
Northern Plains	41	29	12	42.3
Southern Plains	77	51	26	39.9
Mountain I	37	24	13	44.1
Mountain II	25	13	12	37.8
Mountain III	20	16	4	46.6
Pacific	99	46	53	40.9
CA	*266	*204	*62	*44.1
HI	8	7	1	36.7
US ³	*1,084	*724	*360	*40.0

* Revised.

¹ Excludes Agricultural Service Workers.

² Region map on page 13.

³ Excludes AK.

**Hired Workers: Wage Rates for Type of Worker and All Hired Workers
By Region and United States, July 9-15, 2000 ¹**

U.S. and Region ²	Type of Worker			Wage Rates for All Hired Workers
	Field	Livestock	Field & Lvstk Combined	
	<i>Dollars per Hour</i>	<i>Dollars per Hour</i>	<i>Dollars per Hour</i>	<i>Dollars per Hour</i>
Northeast I	8.26	7.66	8.09	8.61
Northeast II	7.67	7.22	7.58	8.04
Appalachian I	6.66	7.97	6.89	7.11
Appalachian II	6.55	6.83	6.66	6.95
Southeast	6.38	7.20	6.54	7.01
FL	7.75	7.45	7.70	8.47
Lake	7.98	7.83	7.92	8.45
Cornbelt I	7.79	8.33	7.87	8.23
Cornbelt II	7.62	8.63	8.00	8.39
Delta	6.39	6.92	6.50	6.86
Northern Plains	7.52	7.28	7.42	7.64
Southern Plains	6.56	7.55	6.85	7.38
Mountain I	6.70	7.63	7.02	7.32
Mountain II	7.21	7.23	7.22	7.96
Mountain III	6.43	7.17	6.63	7.30
Pacific	7.74	8.33	7.75	8.15
CA	*7.46	*8.32	*7.56	*8.14
HI ⁴	9.17		9.09	10.76
US ³	*7.37	*7.68	*7.43	*7.93

* Revised.

¹ Excludes Agricultural Service Workers.

² Region map on page 13.

³ Excludes AK.

⁴ Insufficient data for livestock.

**Hired Workers: Number and Hours Worked by Region
and United States, October 10-16, 1999 ¹**

U.S. and Region ²	Hired			
	Number of Workers	Expected to be Employed		Number of Hours Worked
		150 Days or More ³	149 Days or Less ³	
	<i>1,000</i>	<i>1,000</i>	<i>1,000</i>	<i>Hours per Week</i>
Northeast I	44	31	13	39.7
Northeast II	37	29	8	39.5
Appalachian I	43	30	13	37.8
Appalachian II	31	14	17	32.7
Southeast	31	21	10	35.6
FL	58	47	11	38.8
Lake	72	49	23	38.9
Cornbelt I	65	41	24	35.8
Cornbelt II	26	18	8	43.1
Delta	41	27	14	44.7
Northern Plains	56	41	15	54.2
Southern Plains	52	39	13	39.2
Mountain I	30	19	11	47.1
Mountain II	25	20	5	46.5
Mountain III	22	19	3	44.9
Pacific	87	42	45	41.5
CA	261	171	90	46.7
HI	8	7	1	36.9
US ³	989	665	324	42.5

¹ Excludes Agricultural Service Workers.

² Region map on page 13.

³ Excludes AK.

**Hired Workers: Wage Rates for Type of Worker and All Hired Workers
By Region and United States, October 10-16, 1999 ¹**

U.S. and Region ²	Type of Worker			Wage Rates for All Hired Workers
	Field	Livestock	Field & Lvstk Combined	
	<i>Dollars per Hour</i>	<i>Dollars per Hour</i>	<i>Dollars per Hour</i>	<i>Dollars per Hour</i>
Northeast I	8.21	7.58	7.99	8.46
Northeast II	7.22	6.60	7.00	7.55
Appalachian I	6.88	7.45	7.03	7.48
Appalachian II	6.01	7.14	6.43	6.94
Southeast	6.63	7.10	6.78	6.99
FL	7.05	7.00	7.04	8.05
Lake	8.42	7.71	8.18	8.64
Cornbelt I	7.65	7.17	7.57	8.27
Cornbelt II	7.85	7.86	7.85	8.17
Delta	6.14	7.02	6.28	6.59
Northern Plains	7.59	7.54	7.58	7.83
Southern Plains	6.48	7.29	6.74	7.24
Mountain I	7.06	7.40	7.17	7.36
Mountain II	6.79	7.00	6.90	7.23
Mountain III	6.51	7.40	6.69	7.12
Pacific	8.02	7.89	8.00	8.35
CA	7.25	8.03	7.30	7.86
HI ⁴	9.21		9.24	10.88
US ³	7.31	7.43	7.33	7.83

¹ Excludes Agricultural Service Workers.

² Region map on page 13.

³ Excludes AK.

⁴ Insufficient data for livestock.

**Field and Livestock Workers Combined: Wage Rates, by Type
of Farm, by Region and 48 States ¹**

Region ²	October 10-16, 1999				October 8-14, 2000			
	Field Crops	Other Crops	L'stk & Poultry	All Farms	Field Crops	Other Crops	L'stk & Poultry	All Farms
	<i>Dollars per Hour</i>	<i>Dollars per Hour</i>	<i>Dollars per Hour</i>	<i>Dollars per Hour</i>	<i>Dollars per Hour</i>	<i>Dollars per Hour</i>	<i>Dollars per Hour</i>	<i>Dollars per Hour</i>
Northeast	8.21	7.78	7.05	7.52	7.44	8.30	7.31	7.97
Appalachian	6.36	6.72	7.18	6.79	6.73	7.47	6.77	6.95
Southeast	7.38	6.86	7.19	6.95	6.29	7.66	7.36	7.51
Lake	3/	8.22	7.84	8.18	7.61	8.02	8.87	8.39
Cornbelt	7.87	7.77	7.16	7.67	8.12	7.72	7.79	7.92
Delta	6.28	5.96	6.95	6.28	6.72	6.93	7.01	6.82
Northern Plains	7.72	8.01	7.36	7.58	7.93	8.80	7.94	8.22
Southern Plains	6.29	6.84	7.02	6.74	7.11	6.07	7.41	6.95
Mountain	6.88	6.52	7.32	6.92	7.44	7.09	7.70	7.40
Pacific	7.90	7.33	8.51	7.46	8.25	7.91	8.77	8.04
48 States	7.40	7.23	7.51	7.33	7.43	7.82	7.85	7.76

**All Hired Workers: Wage Rates, by Economic Class of Farm
by Region and 48 States ¹**

Region ²	October 10-16, 1999					October 8-14, 2000				
	Gross Value Sales-\$1000's				All Farms	Gross Value Sales-\$1000's				All Farms
	<40	40-99	100-249	250+		<40	40-99	100-249	250+	
	<i>Dollars per Hour</i>	<i>Dollars per Hour</i>	<i>Dollars per Hour</i>	<i>Dollars per Hour</i>	<i>Dollars per Hour</i>	<i>Dollars per Hour</i>	<i>Dollars per Hour</i>	<i>Dollars per Hour</i>	<i>Dollars per Hour</i>	<i>Dollars per Hour</i>
N. East	3/	7.21	7.51	8.26	8.03	7.83	6.85	8.21	8.97	8.60
Appal.	3/	6.24	6.24	7.51	7.27	7.89	6.28	6.44	7.66	7.36
S. East	6.99	7.45	7.40	7.78	7.69	7.57	9.07	7.56	8.30	8.18
Lake	7.06	3/	6.89	8.71	8.64	3/	7.85	7.59	9.42	9.05
Cornbelt	7.91	7.18	7.61	8.67	8.24	7.86	7.22	7.72	8.64	8.22
Delta	7.00	6.94	6.49	6.59	6.59	6.93	7.87	6.98	6.91	7.06
N. Plains	6.52	6.57	7.70	8.08	7.83	8.39	7.83	7.76	8.61	8.41
S. Plains	6.42	7.57	7.23	7.58	7.24	8.22	8.31	7.80	7.23	7.59
Mountain	6.61	7.58	6.17	7.38	7.25	7.10	6.99	7.61	7.90	7.73
Pacific	8.71	7.72	7.94	7.98	7.97	9.07	9.52	7.56	8.69	8.63
48 States	7.56	7.54	7.42	7.94	7.70	8.06	7.83	7.59	8.50	8.28

¹ Excludes Agricultural Service Workers.

² Regions consist of the following States.

Northeast: CT, DE, MD, ME, MA, NH, NJ, NY, PA, RI, VT.

Appalachian: KY, NC, TN, VA, WV.

Southeast: AL, FL, GA, SC.

Lake: MI, MN, WI.

Cornbelt: IA, IL, IN, MO, OH.

Delta: AR, LA, MS.

Northern Plains: KS, NE, ND, SD.

Southern Plains: OK, TX.

Mountain: AZ, CO, ID, MT, NM, NV, UT, WY.

Pacific: CA, OR, WA.

48 States: All States, excluding AK and HI.

³ Insufficient data.

**Field and Livestock Workers: Distribution
by Type of Farm, 48 States^{1 2 3}**

Type of Farm	October 10-16, 1999	July 9-15, 2000	October 8-14, 2000
	<i>Percent of Field and Livestock Workers</i>	<i>Percent of Field and Livestock Workers</i>	<i>Percent of Field and Livestock Workers</i>
Field Crops	15	*17	15
Other Crops	57	*54	56
Livestock, Dairy, & Poultry	28	29	29
	100	100	100

* Revised.

**Hired Workers: Distribution by Economic
Class of Farm, 48 States^{1 3}**

Gross Value of Sales	October 10-16, 1999	July 9-15, 2000	October 8-14, 2000
	<i>Percent of Hired Workers</i>	<i>Percent of Hired Workers</i>	<i>Percent of Hired Workers</i>
Less than \$40,000	11	14	11
\$40,000-\$99,999	7	9	8
\$100,000-\$249,999	13	16	14
\$250,000 and over	69	61	67
	100	100	100

Hired Workers: Distribution by Category, United States,^{1 3}

	October 10-16, 1999	July 9-15, 2000	October 8-14, 2000
	<i>Percent of Hired Workers</i>	<i>Percent of Hired Workers</i>	<i>Percent of Hired Workers</i>
Employed on Farms Hiring			
1 Worker	10	11	11
2 Workers	9	10	10
3-6 Workers	18	20	17
7-10 Workers	8	*9	9
At least 11 Workers	55	*50	53
	100	100	100

* Revised.

¹ 48 States, excluding AK and HI.

² Field and Livestock Workers combined.

³ Excludes Agricultural Service Workers.

Agricultural Services

Crew leaders and custom crews provided 285,000 workers for the Nation's farms and ranches during the week of October 8-14, 2000. Service workers in California numbered 86,000 this October compared with 106,000 last year. Florida's number of service workers was 11,000, compared with 5,000 last year.

The average wage received by agricultural service workers in California and Florida were \$8.83 and \$8.80 per hour, respectively. Comparable wages in October 1999 were \$7.96 in California and \$8.65 in Florida.

**Agricultural Service Workers: Number, Hours Worked, and Wage Rates,
for California, Florida, and United States ¹**

State	Number of Workers Working on Farms			Hours Worked ²			Wage Rates ^{2 3}		
	Oct 1999	Jul 2000	Oct 2000	Oct 1999	Jul 2000	Oct 2000	Oct 1999	Jul 2000	Oct 2000
	<i>1,000</i>	<i>1,000</i>	<i>1,000</i>	<i>Hours</i>	<i>Hours</i>	<i>Hours</i>	<i>Dollars per Hour</i>	<i>Dollars per Hour</i>	<i>Dollars per Hour</i>
CA	106.0	*103.0	86.0	36.5	*33.9	31.4	7.96	8.05	8.83
FL	5.0	2.0	11.0	32.0	43.0	32.0	8.65	9.00	8.80
US	290.0	*293.0	285.0						

* Revised.

¹ Data are for Agricultural Services performed on the farm by custom service units such as crew leaders or custom crews. These statistics are not included in the State-Regional tables.

² United States data not available.

³ Benefits, such as housing and meals, are provided some workers but the values are not included in the wage rates.

**Migrant Workers: Percent of all Hired Workers, United States,
By Quarter (Includes Agricultural Service Workers), 1997-00 ¹**

Year	Jan	Apr	Jul	Oct
	<i>Percent</i>	<i>Percent</i>	<i>Percent</i>	<i>Percent</i>
1997	9.5	6.3	10.8	11.2
1998	7.3	6.6	13.7	11.0
1999	6.0	8.7	12.4	12.3
2000	7.7	8.5	*11.5	11.9

* Revised.

¹ Definition "Migrant Worker" is a farm worker whose employment required travel that prevented the farm worker from returning to his/her permanent place of residence the same day.

**Workers: Annual Average Number and Hours Worked
By Region, State, and United States, 1999-00 ¹**

State and Region ²	Number						Hours Worked	
	Self Employed		Unpaid		Hired		Hired Workers	
	1999	2000	1999	2000	1999	2000	1999	2000
	<i>1,000</i>	<i>1,000</i>	<i>1,000</i>	<i>1,000</i>	<i>1,000</i>	<i>1,000</i>	<i>Hours per Week</i>	<i>Hours per Week</i>
NY	26.5	29.5	7.0	11.0	21.5	21.8	38.7	40.2
Northeast I	52.8	53.3	15.0	19.3	40.5	41.5	38.0	38.8
PA	41.3	43.3	23.3	23.3	20.7	25.8	38.4	39.1
Northeast II	59.4	61.8	28.6	28.8	37.0	41.8	40.5	39.8
NC	43.3	39.0	10.2	10.7	27.1	26.8	36.0	38.8
VA	39.0	41.0	7.8	6.5	13.0	10.5	33.4	31.4
Appalachian I	82.3	80.0	18.0	17.3	40.0	37.3	35.2	36.7
Appalachian II	139.3	140.3	34.0	33.3	30.5	29.3	32.0	33.2
Southeast	74.5	80.3	15.8	17.3	33.0	32.0	37.4	34.8
FL	29.5	29.5	5.8	5.5	53.0	56.5	39.7	40.8
MI	34.3	37.3	11.0	11.5	25.1	25.8	38.8	38.9
MN	65.5	65.0	23.3	25.0	21.7	18.6	38.4	38.7
WI	57.0	54.0	23.5	19.8	17.5	16.9	33.9	33.8
Lake	156.8	156.3	57.8	56.3	64.3	61.3	37.3	37.5
Cornbelt I	157.3	155.8	47.3	45.5	51.0	52.8	34.8	35.5
Cornbelt II	144.3	153.0	48.0	45.8	24.0	25.8	36.7	37.3
Delta	79.8	81.8	22.5	22.5	35.5	34.8	39.2	39.2
Northern Plains	140.8	140.0	58.4	55.8	40.5	34.8	45.6	44.3
OK	61.8	62.0	18.0	18.5	11.4	14.3	37.0	37.9
TX	197.8	193.0	41.0	40.3	41.4	47.0	39.0	38.3
Southern Plains	259.5	255.0	59.0	58.8	52.8	61.3	38.6	38.2
Mountain I	43.0	44.3	18.5	21.3	24.3	27.8	45.6	41.9
Mountain II	32.5	34.3	9.9	11.5	22.3	22.5	43.4	40.9
AZ	3.0	3.8	11.0	11.0	13.5	13.1	45.7	47.0
NM	9.8	11.0	13.5	12.8	5.8	5.9	43.0	43.0
Mountain III	12.8	14.8	24.5	23.8	19.3	19.0	44.9	45.8
OR	33.3	26.0	9.0	6.8	30.4	26.4	40.7	39.5
WA	20.8	26.8	4.5	7.0	46.1	40.4	37.7	40.8
Pacific	54.0	52.8	13.5	13.8	76.5	66.8	38.9	40.3
CA	37.0	39.0	12.5	10.5	277.3	237.8	44.1	43.7
HI	3.2	3.1	1.1	1.0	7.5	7.8	37.1	36.5
US ³	1,558.4	1,574.8	490.0	487.5	929.0	890.3	40.3	40.1

¹ Excludes Agricultural Service Workers.

² Region map on page 16.

³ Excludes AK.

**Hired Workers: Annual Average Wage Rates
By Region and United States, 1999-00^{1 4}**

	All Hired		Field		Field & Livestock	
	1999	2000	1999	2000	1999	2000
	<i>Dollars per Hour</i>	<i>Dollars per Hour</i>	<i>Dollars per Hour</i>	<i>Dollars per Hour</i>	<i>Dollars per Hour</i>	<i>Dollars per Hour</i>
Northeast I	8.12	8.74	8.08	8.48	7.68	8.17
Northeast II	7.60	8.03	7.40	7.62	7.04	7.37
Appalachian I	7.39	7.38	6.84	6.88	6.98	7.06
Appalachian II	6.86	6.97	6.07	6.44	6.39	6.60
Southeast	7.00	7.25	6.60	6.77	6.72	6.83
FL	8.21	8.49	7.26	7.68	7.25	7.66
Lake	8.19	8.72	7.89	8.16	7.65	8.07
Cornbelt I	8.23	8.55	7.65	8.02	7.62	8.09
Cornbelt II	8.07	8.12	7.50	7.51	7.76	7.84
Delta	6.85	7.03	6.40	6.62	6.50	6.69
Northern Plains	7.80	8.03	7.52	7.84	7.49	7.81
Southern Plains	6.97	7.48	6.38	6.75	6.49	6.98
Mountain I	7.02	7.55	6.64	7.00	6.79	7.26
Mountain II	7.60	7.92	6.83	7.29	7.04	7.43
Mountain III	7.28	7.34	6.61	6.59	6.74	6.71
Pacific	8.14	8.63	7.54	8.10	7.64	8.14
CA	7.88	8.21	7.18	7.48	7.27	7.56
HI	10.87	10.62	9.38	9.09	9.38	9.05
US ³	7.77	8.10	7.19	7.50	7.22	7.54

¹ Excludes Agricultural Service Workers.

² Region map on page 16.

³ Excludes AK.

⁴ Annual rates are averages of the published wage rates for each survey week weighted by the number of hours worked during the week. The annual average for all States, Regions, and the U.S. is based on data collected for the week containing the 12th day of the month during January, April, July, and October.

**Hired Workers: Annual Average Wage Rates
By State, 1999-00^{1 2}**

	All Hired		Field		Field & Livestock	
	1999	2000	1999	2000	1999	2000
	<i>Dollars per Hour</i>	<i>Dollars per Hour</i>	<i>Dollars per Hour</i>	<i>Dollars per Hour</i>	<i>Dollars per Hour</i>	<i>Dollars per Hour</i>
AL	7.19	7.02	6.82	6.77	6.89	6.69
AZ	7.29	7.18	6.64	6.55	6.71	6.60
AR	6.88	7.27	6.47	7.07	6.59	7.07
CA	7.88	8.21	7.18	7.48	7.27	7.56
CO	7.65	7.96	6.94	7.34	7.01	7.50
DE	8.03	8.96	7.10	8.21	7.09	8.20
FL	8.21	8.49	7.26	7.68	7.25	7.66
GA	7.14	7.71	6.63	7.26	6.84	7.24
HI	10.87	10.62	9.38	9.09	9.38	9.05
ID	7.19	7.69	6.79	7.16	7.01	7.52
IL	8.25	8.56	7.95	8.13	7.73	8.16
IN	8.67	8.88	7.56	8.08	7.73	8.22
IA	8.67	8.51	8.37	7.85	8.34	8.14
KS	8.08	7.96	7.51	7.72	7.64	7.70
KY	7.12	7.17	5.97	6.44	6.49	6.71
LA	6.48	6.87	6.35	6.44	6.35	6.53
MD	7.63	8.51	7.53	7.76	7.05	7.65
MI	8.21	8.77	7.44	7.87	7.37	7.93
MN	8.53	8.91	8.67	8.67	8.26	8.38
MS	7.16	6.91	6.37	6.28	6.56	6.42
MO	7.33	7.70	6.86	7.06	7.07	7.54
MT	6.95	7.70	6.52	6.83	6.56	6.94
NE	7.73	7.93	7.57	7.52	7.54	7.73
NV	7.08	7.50	6.53	7.06	6.57	7.06
NJ	8.15	8.62	7.46	7.97	7.50	7.96
NM	7.29	7.73	6.49	6.74	6.81	7.00
NY	7.80	8.31	7.87	8.32	7.49	7.95
NC	7.18	7.31	6.70	6.83	6.79	6.99
ND	7.80	8.72	7.81	8.62	7.77	8.56
OH	7.82	8.24	7.53	7.76	7.51	7.88
OK	7.10	7.75	6.51	6.81	6.55	7.15
OR	8.32	8.68	7.73	7.92	7.74	7.97
PA	7.21	7.66	7.24	7.38	6.68	7.05
SC	6.60	6.80	6.36	6.27	6.37	6.39
SD	7.33	7.64	7.14	7.34	6.87	7.38
TN	6.46	6.65	6.01	6.39	6.17	6.43
TX	6.93	7.40	6.35	6.74	6.48	6.93
UT	7.66	7.99	6.59	7.16	7.12	7.36
VA	7.88	7.63	7.42	7.08	7.51	7.28
WA	8.01	8.60	7.43	8.20	7.57	8.24
WV	7.14	7.38	6.81	6.95	6.75	6.89
WI	7.58	8.39	7.33	8.40	7.26	7.93
WY	6.43	6.64	5.85	6.24	6.13	6.23
Oth Sts ³	8.68	9.25	8.36	8.64	8.06	8.44
US ⁴	7.77	8.10	7.19	7.50	7.22	7.54

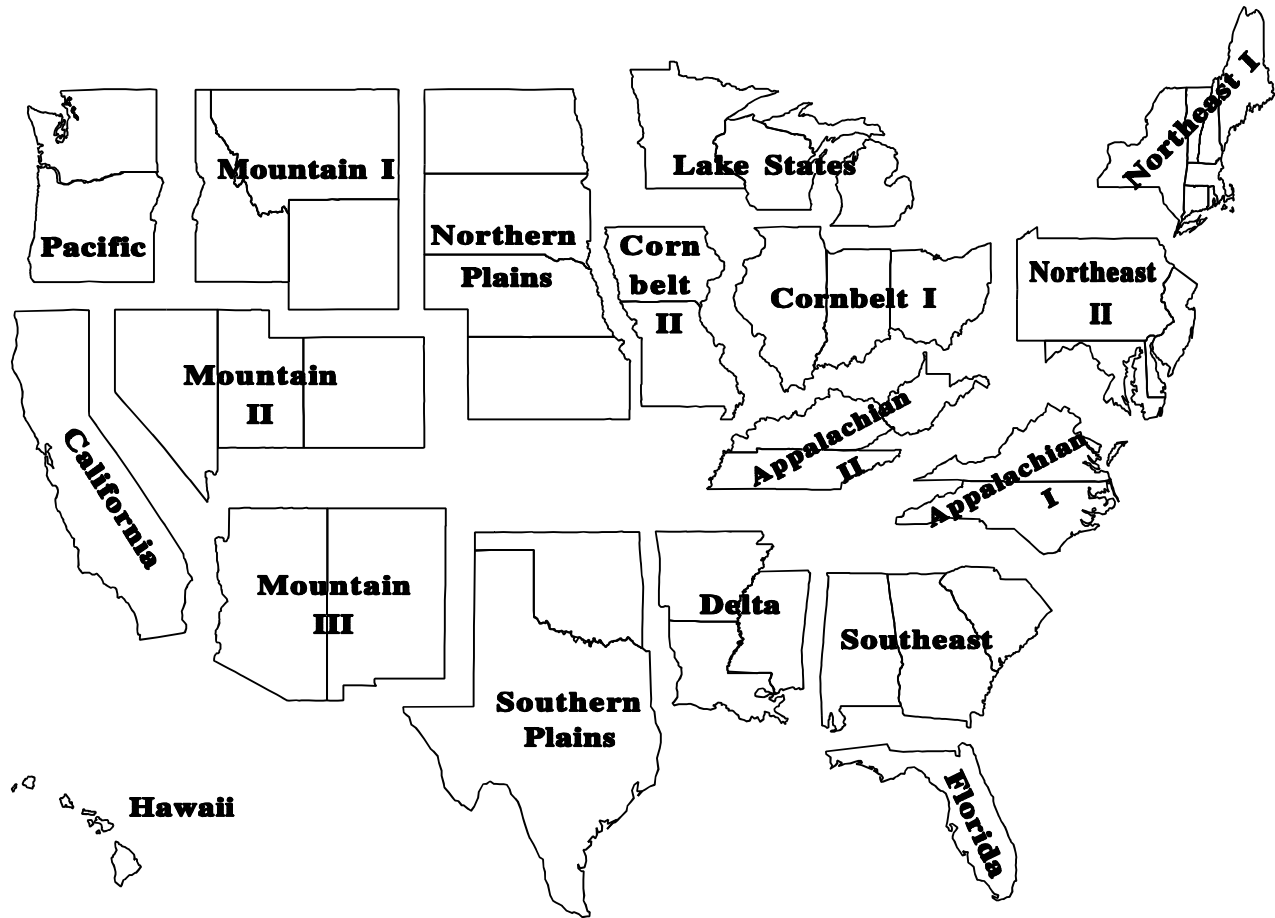
¹ Excludes Agricultural Service Workers.

² Annual rates are averages of the published wage rates for each survey week weighted by the number of hours worked during the week. The annual average for all States, Regions, and the U.S. is based on data collected for the week containing the 12th day of the month during January, April, July, and October..

³ Includes CT, ME, MA, NH, RI, and VT.

⁴ Excludes AK.

Farm Labor Regions



Region	States
Northeast I	CT, ME, MA, NH, NY, RI, VT.
Northeast II	DE, MD, NJ, PA.
Appalachian I	NC, VA.
Appalachian II	KY, TN, WV.
Southeast	AL, GA, SC.
Lake	MI, MN, WI.
Cornbelt I	IL, IN, OH.
Cornbelt II	IA, MO.
Delta	AR, LA, MS.
Northern Plains	KS, NE, ND, SD.
Southern Plains	OK, TX.
Mountain I	ID, MT, WY.
Mountain II	CO, NV, UT.
Mountain III	AZ, NM.
Pacific	OR, WA.

Reliability of Farm Labor Estimates

Survey Procedures: These data were collected by the National Agricultural Statistics Service (NASS) during the last two weeks of October using sampling procedures to ensure every employer of agricultural workers had a chance of being selected.

Two samples of farm operators are selected. First, NASS maintains a list of farms that hire farm workers. Farms on this list are classified by size and type. Those expected to employ large numbers of workers are selected with greater frequency than those hiring few or no workers. A second sample consists of segments of land scientifically selected from an area sampling frame. Each June, highly trained interviewers locate each selected land segment and identify every farm operating land within the sample segment's boundaries. The names of farms found in these area segments are matched against the NASS list of farms; those not found on the list are included in the labor survey sample to represent all farms. This methodology is known as multiple frame sampling, with an area sample used to measure the incompleteness of the list. Additionally, a list of agricultural service firms was sampled in California and Florida. The survey reference week was October 8-14, 2000.

Reliability: Two types of errors, sampling and nonsampling, are possible in an estimate based on a sample survey. Both types affect the "precision" of the estimates.

Sampling error occurs because a complete census is not taken. The sampling error measures the variation in estimates from the average of all possible samples. An estimate of 100 with a sampling error of 1 would mean that chances are 19 out of 20 that the estimates from all possible samples averaged together would be between 98 and 102; which is the survey estimate, plus or minus two times the sampling error. The sampling error expressed as a percent of the estimate is called the relative sampling error. The relative sampling error for number of hired workers at the U.S. level was 3.1 percent. The relative sampling error for the number of hired workers generally ranged between 9 and 21 percent at the regional level. The U.S. all hired farm worker wage rate had a relative sampling error of 1.0 percent. The relative sampling error was 1.0 percent for the combined field and livestock worker wage rate. Relative sampling errors for the all hired farm worker wage rate generally ranged between 2 and 5 percent at the regional levels. Relative sampling errors for wage rates published by type of farm and economic class of farm ranged between 2 and 22 percent at the regional level.

Nonsampling errors can occur in a complete census as well as in sample surveys. They are caused by the inability to obtain correct information from each operation sampled, differences in interpreting questions or definitions, and mistakes in editing, coding, or processing the data. Special efforts are taken at each step of the survey to minimize nonsampling errors.

Revision Policy: Farm labor information is subject to revision the next time the information is published or the year after the original publication date. The basis for revision must be supported by additional data that directly affect the level of the estimate. Worker numbers, hours worked, and wage rates for July 2000 and October 1999 were subject to revision with this report. Revisions were made and previous data are reprinted in this report for your information.

Annual Average Wage Rates: Included with this report are the annual average wage rates for 1999 and 2000. Annual wage rates are the averages of the wage rates for each survey week weighted by the total number of hours worked during the week. The survey weeks include the 12th of the month for January, April, July, and October. Combining data for the four survey weeks provides a large enough sample to permit publication of some wages at the State level. Annual average wage rates for both 1999 and 2000 are published at the State, regional and U.S. level for the all hired wage rate, the field worker wage rate, and the combined field and livestock worker wage rate. For 2000, the relative sampling error, at the U.S. level, was 1.0 percent for the all hired worker wage rate. The relative sampling error was 1.0 percent for the combined field and livestock worker wage rate. The relative sampling error for all hired farm worker and combined field and livestock worker wage rates generally ranged between 2 and 6 percent at the regional level and 2 to 10 percent at the State level.

Next Farm Labor Publication Date: The February 16th report will have information for the survey week of January 7-13, 2001. The report will include the number of All Hired Workers, Average Hours Worked by Hired Workers and the All Hired Worker Wage Rates at regional and U.S. levels. The wage rate for field, livestock, and combined field and livestock workers will also be available for the regional and U.S. levels. The number of Agricultural Service Workers and corresponding wage rates will be published for Florida and California.

Index

	Page
U.S. Hired Workers on Farms, Wage Rates and Hours Worked	3
Number of Workers and Average Hours Worked by Region and U.S.	
October 2000	4
July 2000	6
October 1999	8
Wage Rates by Region and U.S.	
October 2000	5
July 2000	7
October 1999	9
Agricultural Services: Workers, Average Hours Worked, and Wages	
October 2000	12
July 2000	12
October 1999	12
Annual Averages 1999 - 2000	
Number of Workers and Average Hours Worked by Selected States, Regions, and U.S.	13
Hired Workers Wage Rates by Region and U.S.	14
Hired Workers Wage Rates by State	15
Other Labor Estimates	
U.S. Distribution of Workers	11
Wage Rates by Type of Farm, by Region, State, 48 States	10
Wage Rates by Economic Class of Farm, by Region, State, 48 States	10
Migrant Workers	12
Farm Labor Region Map	16
Reliability of Farm Labor Estimates	17
Revision Policy	17

The next "Farm Labor" report will be released at 3 p.m. on February 16, 2001.

The United States Department of Agriculture (USDA) prohibits discrimination in all its programs on the basis of race, color, national origin, gender, religion, age, disability, political beliefs, sexual orientation, and marital or family status. (Not all prohibited bases apply to all programs.) Persons with disabilities who require alternative means for communication of program information (braille, large print, audiotape, etc.) should contact the USDA's TARGET Center at 202-720-2600 (voice and TDD).

To file a complaint of discrimination, write USDA, Director, Office of Civil Rights, Room 326-W, Whitten Building, 14th and Independence Avenue, SW, Washington, D.C., 20250-9410, or call 202-720-5964 (voice or TDD). USDA is an equal opportunity provider and employer.

ACCESS TO REPORTS!!

For your convenience, there are several ways to obtain NASS reports, data products, and services:

INTERNET ACCESS

All NASS reports are available free of charge on the worldwide Internet. For access, connect to the Internet and go to the NASS Home Page at: <http://www.usda.gov/nass/>. Select "Today's Reports" or Publications and then Reports by Calendar or Publications and then Search, by Title or Subject.

E-MAIL SUBSCRIPTION

There are two options for subscribing via e-mail. All NASS reports are available by subscription free of charge direct to your e-mail address. 1) Starting with the NASS Home Page at <http://www.usda.gov/nass/>, click on **Publications**, then click on the **Subscribe by E-mail** button which takes you to the page describing e-mail delivery of reports. Finally, click on **Go to the Subscription Page** and follow the instructions. 2) If you do NOT have Internet access, send an e-mail message to: usda-reports@usda.mannlib.cornell.edu. In the body of the message type the word: **list**.

AUTOFAX ACCESS

NASSFax service is available for some reports from your fax machine. Please call 202-720-2000, using the handset attached to your fax. Respond to the voice prompts. Document 0411 is a list of available reports.

PRINTED REPORTS OR DATA PRODUCTS

CALL OUR TOLL-FREE ORDER DESK: 800-999-6779 (U.S. and Canada)
Other areas, please call 703-834-0125 FAX: 703-834-0110
(Visa, MasterCard, check, or money order acceptable for payment.)

ASSISTANCE

For **assistance** with general agricultural statistics or further information about NASS or its products or services, contact the **Agricultural Statistics Hotline** at **800-727-9540**, 7:30 a.m. to 4:00 p.m. ET, or e-mail: nass@nass.usda.gov.