



Farm Labor

Released February 15, 2002, by the National Agricultural Statistics Service (NASS), Agricultural Statistics Board, U.S. Department of Agriculture. For information on "Farm Labor" call Daryl Brinkman at 202-690-3226, office hours 7:30 a.m. to 4:00 p.m. ET.

Hired Workers Up 7 Percent, Wage Rates Up Over 3 Percent From a Year Ago

There were 914,000 hired workers on the Nation's farms and ranches the week of January 6-12, 2002, up 7 percent from a year ago. Of these hired workers, 731,000 workers were hired directly by farm operators. Agricultural service employees on farms and ranches made up the remaining 183,000 workers. Migrant workers accounted for 7.6 percent of the January hired workforce compared with 9.6 percent last year.

Farm operators paid their hired workers an average wage of \$8.96 per hour during the January 2002 survey week, up 30 cents from a year earlier. Field workers received an average of \$8.25 per hour, up 49 cents from last January, while livestock workers earned \$8.25 per hour compared with \$8.07 a year earlier. The field and livestock worker combined wage rate at \$8.25 was up 38 cents from last year.

The number of hours worked averaged 38.6 hours for hired workers during the survey week compared with 37.3 hours a year ago.

The largest increases in number of hired farm workers over last year occurred in the Corn Belt II (Iowa and Missouri), Delta (Arkansas, Louisiana, and Mississippi), Appalachian I (North Carolina and Virginia), and Southeast (Alabama, Georgia, and South Carolina) regions. In the Corn Belt II region, unseasonably warm weather increased field activities. Cold and wet conditions in the Delta region resulted in additional livestock care and feeding. Other work activities included preparation of farm equipment for spring field activities. In contrast, wet and wintery conditions in southern localities and dry conditions over much of the northern Appalachian I region required extra care and feeding activities for livestock. Farm, nursery, and ranching activities were underway in the Southeast region despite varying weather conditions.

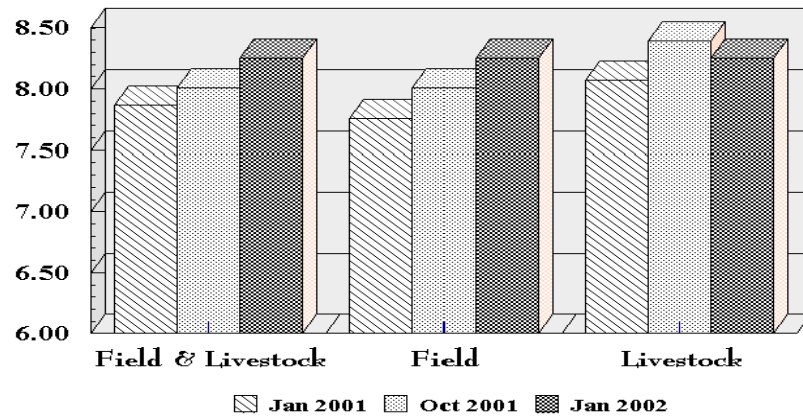
The largest decreases in number of hired farm workers from a year ago were in the Northern Plains (Kansas, Nebraska, North Dakota, and South Dakota), Corn Belt I (Illinois, Indiana, and Ohio), Appalachian II (Kentucky, Tennessee, and West Virginia), and Southern Plains (Oklahoma and Texas) regions. While weather was generally favorable for fieldwork in these regions, the large decline in hired workers is attributed to less demand for field workers for this time of year.

Hired farm worker wage rates were generally above a year ago in all regions. The largest increases occurred in Florida, Mountain III (Arizona and New Mexico), Corn Belt II, and Mountain II (Colorado, Nevada, and Utah) regions. The higher wages in these regions are generally attributable to fewer seasonal workers on the payroll.

Revisions: July 2001 wage rates for field, field and livestock, and all hired workers in Hawaii and all hired workers in the Southeast region were published in the October 2001 release were in error. The corrected wage rates for July 2001 in Hawaii are \$9.38 for field workers, \$9.44 for field and livestock workers, and \$11.08 for all hired workers. In the Southeast region, the revised all hired wage rate is \$7.59. October revisions are footnoted in the tables on the following pages. These revisions do not affect previously published annual average wage rates for 2001.

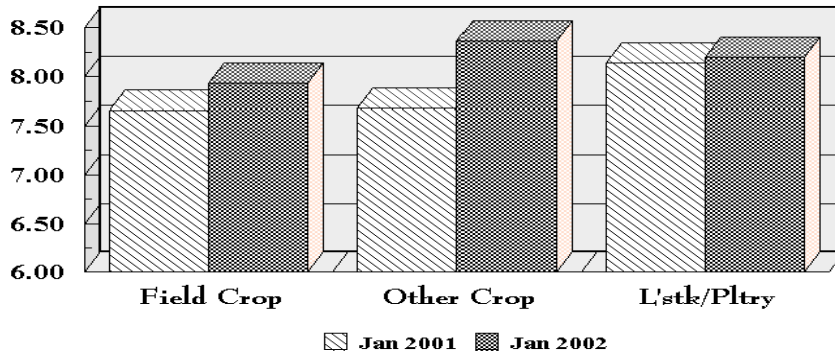
U.S. Wage Rates by Type of Worker

Dollars/Hour



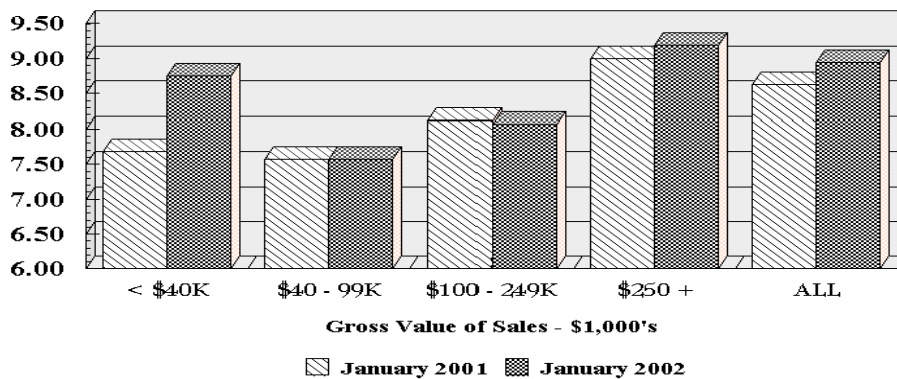
Wage Rate of Field & Livestock Workers By Type of Farm

Dollars/Hour



Wage Rates of All Hired Workers by Economic Class of Farm

Dollars/Hour



**Farm Labor: Employment and Wage Rates, United States,
January 6-12, 2002, with Comparisons ¹**

Farm Employment	January 7-13, 2001	October 7-13, 2001	January 6-12, 2002
	<i>1,000</i>	<i>1,000</i>	<i>1,000</i>
Hired Workers	691	*991	731
150 Days or More	573	*708	597
149 Days or Less	118	283	134
Agricultural Services Workers Working on Farms	165	262	183
Hired Farm & Service Workers	856	*1,253	914
	<i>Percent</i>	<i>Percent</i>	<i>Percent</i>
Migrant Workers Percent of Hired Farm & Service Workers	*9.6	*11.7	7.6
	<i>Hours per Week</i>	<i>Hours per Week</i>	<i>Hours per Week</i>
Hours Worked Hired	37.3	*41.7	38.6
	<i>Dollars per Hour</i>	<i>Dollars per Hour</i>	<i>Dollars per Hour</i>
Wage Rates for All Hired Workers ^{2 3}	8.66	*8.59	8.96
Type of Worker			
Field & Livestock Combined	7.87	*8.09	8.25
Field	7.76	8.01	8.25
Livestock	8.07	*8.39	8.25

* Revised.

¹ Excludes AK.

² Benefits, such as housing and meals, are provided some workers but the values are not included in the wage rates.

³ Excludes Agricultural Service Workers.

**Hired Workers: Number and Hours Worked by Region
and United States, January 6-12, 2002¹**

U.S. and Region ²	Hired			
	Number of Workers	Expected to be Employed		Number of Hours Worked
		150 Days or More	149 Days or Less	
	<i>1,000</i>	<i>1,000</i>	<i>1,000</i>	<i>Hours per Week</i>
Northeast I	33	31	2	40.0
Northeast II	33	29	4	38.1
Appalachian I	29	26	3	36.6
Appalachian II	25	15	10	34.4
Southeast	25	21	4	35.7
FL	62	50	12	37.2
Lake	38	33	5	33.5
Cornbelt I	30	25	5	40.4
Cornbelt II	24	21	3	33.5
Delta	24	18	6	33.1
Northern Plains	28	25	3	38.5
Southern Plains	61	54	7	41.5
Mountain I	18	16	2	34.5
Mountain II	17	13	4	33.2
Mountain III	18	16	2	47.7
Pacific	48	39	9	34.6
CA	210	158	52	42.2
HI	8	7	1	37.0
US ³	731	597	134	38.6

¹ Excludes Agricultural Service Workers.

² Region map on page 13.

³ Excludes AK.

**Hired Workers: Wage Rates for Type of Workers and All Hired Workers
by Region and United States, January 6-12, 2002 ¹**

U.S. and Region ²	Type of Worker			Wage Rates for All Hired Workers
	Field	Livestock	Field & Lvstk Combined	
	<i>Dollars per Hour</i>	<i>Dollars per Hour</i>	<i>Dollars per Hour</i>	<i>Dollars per Hour</i>
Northeast I	9.58	7.80	8.69	9.46
Northeast II	8.71	6.88	7.95	8.87
Appalachian I	7.73	7.94	7.83	8.72
Appalachian II	6.72	7.18	6.93	7.29
Southeast	7.56	7.61	7.58	8.08
FL	8.15	9.05	8.26	9.02
Lake	10.22	8.26	8.94	9.91
Cornbelt I	9.03	9.22	9.15	9.75
Cornbelt II	8.62	9.41	9.26	9.74
Delta	7.90	7.21	7.61	7.95
Northern Plains	8.34	8.41	8.39	9.00
Southern Plains	7.82	7.37	7.57	8.05
Mountain I	8.02	7.74	7.81	8.34
Mountain II	8.54	8.48	8.51	9.15
Mountain III	7.57	8.48	7.85	8.42
Pacific	8.18	9.64	8.42	9.21
CA	8.25	9.69	8.39	9.15
HI ⁴	9.36		9.33	10.90
US ³	8.25	8.25	8.25	8.96

¹ Excludes Agricultural Service Workers.

² Region map on page 13.

³ Excludes AK.

⁴ Insufficient data for livestock.

**Hired Workers: Number and Hours Worked by Region
and United States, October 7-13, 2001 ¹**

U.S. and Region ²	Hired			
	Number of Workers	Expected to be Employed		Number of Hours Worked
		150 Days or More	149 Days or Less	
	<i>1,000</i>	<i>1,000</i>	<i>1,000</i>	<i>Hours per Week</i>
Northeast I	48	35	13	40.7
Northeast II	45	35	10	44.2
Appalachian I	40	24	16	35.2
Appalachian II	29	17	12	38.8
Southeast	37	27	10	38.1
FL	51	44	7	41.8
Lake	74	42	32	40.7
Cornbelt I	57	43	14	36.2
Cornbelt II	41	25	16	34.4
Delta	43	31	12	43.0
Northern Plains	41	26	15	41.0
Southern Plains	68	54	14	40.0
Mountain I	27	20	7	42.4
Mountain II	21	13	8	43.5
Mountain III	17	14	3	46.6
Pacific	89	51	38	39.4
CA	*255	*200	55	*46.7
HI	8	7	1	37.6
US ³	*991	*708	283	*41.7

* Revised.

¹ Excludes Agricultural Service Workers.

² Region map on page 13.

³ Excludes AK.

**Hired Workers: Wage Rates for Type of Worker and All Hired Workers
by Region and United States, October 7-13, 2001 ¹**

U.S. and Region ²	Type of Worker			Wage Rates for All Hired Workers
	Field	Livestock	Field & Lvstk Combined	
	<i>Dollars per Hour</i>	<i>Dollars per Hour</i>	<i>Dollars per Hour</i>	<i>Dollars per Hour</i>
Northeast I	8.24	7.50	8.03	8.79
Northeast II	7.21	7.33	7.24	7.97
Appalachian I	7.52	8.57	7.80	8.26
Appalachian II	7.04	7.77	7.33	7.59
Southeast	7.61	7.28	7.56	8.07
FL	7.70	8.00	7.74	8.84
Lake	9.14	8.59	8.97	9.21
Cornbelt I	8.84	9.29	8.91	9.53
Cornbelt II	8.06	9.26	8.52	8.78
Delta	6.83	7.37	6.91	7.13
Northern Plains	8.37	8.46	8.40	8.68
Southern Plains	7.16	7.97	7.52	8.01
Mountain I	6.99	7.70	7.31	7.72
Mountain II	7.65	8.09	7.78	8.08
Mountain III	6.87	8.13	7.25	7.85
Pacific	9.34	9.87	9.39	9.70
CA	7.91	9.56	8.04	*8.57
HI ⁴	9.32		9.39	10.78
US ³	8.01	*8.39	*8.09	*8.59

* Revised.

¹ Excludes Agricultural Service Workers.

² Region map on page 13.

³ Excludes AK.

⁴ Insufficient data for livestock.

**Hired Workers: Number and Hours Worked by Region
and United States, January 7-13, 2001¹**

U.S. and Region ²	Hired			
	Number of Workers	Expected to be Employed		Number of Hours Worked
		150 Days or More ³	149 Days or Less ³	
	<i>1,000</i>	<i>1,000</i>	<i>1,000</i>	<i>Hours per Week</i>
Northeast I	28	26	2	39.6
Northeast II	31	27	4	37.9
Appalachian I	22	18	4	34.5
Appalachian II	27	14	13	32.8
Southeast	20	17	3	37.8
FL	55	47	8	37.6
Lake	38	34	4	34.6
Cornbelt I	34	29	5	36.9
Cornbelt II	14	13	1	37.3
Delta	17	15	2	33.5
Northern Plains	32	29	3	37.7
Southern Plains	65	54	11	38.1
Mountain I	19	17	2	42.3
Mountain II	18	15	3	39.8
Mountain III	18	16	2	44.2
Pacific	43	35	8	35.7
CA	203	161	42	37.3
HI	7	6	1	35.6
US ³	691	573	118	37.3

¹ Excludes Agricultural Service Workers.

² Region map on page 13.

³ Excludes AK.

**Hired Workers: Wage Rates for Type of Worker and All Hired Workers
by Region and United States, January 7-13, 2001 ¹**

U.S. and Region ²	Type of Worker			Wage Rates for All Hired Workers
	Field	Livestock	Field & Lvstk Combined	
	<i>Dollars per Hour</i>	<i>Dollars per Hour</i>	<i>Dollars per Hour</i>	<i>Dollars per Hour</i>
Northeast I	8.42	7.45	7.86	9.06
Northeast II	7.98	7.01	7.59	8.47
Appalachian I	7.65	7.82	7.73	8.34
Appalachian II	6.57	7.26	6.84	7.18
Southeast	7.30	7.25	7.29	7.88
FL	7.65	7.90	7.67	8.29
Lake	9.12	8.26	8.57	9.53
Cornbelt I	8.58	9.06	8.88	10.10
Cornbelt II	7.86	8.61	8.49	9.05
Delta	7.56	6.62	7.15	7.73
Northern Plains	8.45	8.47	8.46	9.11
Southern Plains	7.35	7.71	7.53	7.98
Mountain I	8.06	8.22	8.19	8.63
Mountain II	7.57	7.76	7.68	8.72
Mountain III	6.71	7.35	6.91	7.72
Pacific	7.96	8.81	8.13	9.06
CA	7.79	8.68	7.95	8.78
HI ⁴	9.07		9.10	10.66
US ³	7.76	8.07	7.87	8.66

¹ Excludes Agricultural Service Workers.

² Region map on page 13.

³ Excludes AK.

⁴ Insufficient data for livestock.

**Field and Livestock Workers Combined: Wage Rates, by Type
of Farm, by Region and 48 States ¹**

Region ²	January 7-13, 2001				January 6-12, 2002			
	Field Crops	Other Crops	L'stk & Poultry	All Farms	Field Crops	Other Crops	L'stk & Poultry	All Farms
	<i>Dollars per Hour</i>	<i>Dollars per Hour</i>	<i>Dollars per Hour</i>	<i>Dollars per Hour</i>	<i>Dollars per Hour</i>	<i>Dollars per Hour</i>	<i>Dollars per Hour</i>	<i>Dollars per Hour</i>
Northeast	(³)	7.98	7.32	7.71	9.13	9.32	7.37	8.32
Appalachian	6.46	7.67	(³)	7.23	6.43	7.94	7.64	7.40
Southeast	7.73	7.49	8.09	7.57	7.58	8.05	8.37	8.07
Lake	8.38	9.06	8.31	8.57	(³)	(³)	7.93	8.94
Cornbelt	9.60	8.45	8.45	8.75	9.82	9.13	8.99	9.19
Delta	(³)	7.23	6.17	7.15	8.42	7.00	7.23	7.61
Northern Plains	8.87	8.31	8.34	8.46	9.19	(³)	7.90	8.39
Southern Plains	7.15	7.21	7.78	7.53	7.45	8.57	7.24	7.57
Mountain	7.06	6.99	7.95	7.59	7.70	8.33	7.81	8.02
Pacific	8.32	7.65	8.90	7.91	7.42	8.21	9.90	8.39
48 States	7.66	7.68	8.14	7.85	7.93	8.37	8.20	8.25

**All Hired Workers: Wage Rates, by Economic Class of Farm
by Region and 48 States ¹**

Region ²	January 7-13, 2001					January 6-12, 2002				
	Gross Value Sales-\$1000's				All Farms	Gross Value Sales-\$1000's				All Farms
	<40	40-99	100-249	250+		<40	40-99	100-249	250+	
	<i>Dollars per Hour</i>	<i>Dollars per Hour</i>	<i>Dollars per Hour</i>	<i>Dollars per Hour</i>	<i>Dollars per Hour</i>	<i>Dollars per Hour</i>	<i>Dollars per Hour</i>	<i>Dollars per Hour</i>	<i>Dollars per Hour</i>	<i>Dollars per Hour</i>
N. East	7.82	7.79	7.46	9.35	8.76	(³)	7.75	8.66	9.32	9.17
Appal.	6.80	6.38	6.38	(³)	7.72	7.08	6.51	7.71	9.03	8.08
S. East	6.61	7.95	8.19	8.35	8.18	7.65	7.50	8.26	8.88	8.76
Lake	9.01	9.19	(³)	9.68	9.53	(³)	(³)	(³)	10.46	9.91
Cornbelt	6.65	7.22	9.47	10.06	9.79	(³)	6.27	9.58	10.03	9.75
Delta	7.16	6.34	(³)	8.91	7.73	7.37	7.37	7.14	8.67	7.95
N. Plains	7.73	(³)	8.52	8.98	9.11	(³)	7.56	7.98	9.29	9.00
S. Plains	7.30	7.74	8.06	8.15	7.98	6.18	8.08	7.33	8.43	8.05
Mountain	(³)	7.52	7.52	8.48	8.35	(³)	7.53	7.37	8.54	8.60
Pacific	7.52	7.81	8.36	8.98	8.81	(³)	8.85	8.39	9.21	9.16
48 States	7.68	7.57	8.12	9.00	8.63	8.75	7.57	8.06	9.19	8.94

¹ Excludes Agricultural Service Workers.

² Regions consist of the following States:

Northeast: CT, DE, MD, ME, MA, NH, NJ, NY, PA, RI, VT.

Appalachian: KY, NC, TN, VA, WV.

Southeast: AL, FL, GA, SC.

Lake: MI, MN, WI.

Cornbelt: IA, IL, IN, MO, OH.

Delta: AR, LA, MS.

Northern Plains: KS, NE, ND, SD.

Southern Plains: OK, TX.

Mountain: AZ, CO, ID, MT, NM, NV, UT, WY.

Pacific: CA, OR, WA.

48 States: All States, excluding AK and HI.

³ Insufficient data.

**Field and Livestock Workers: Distribution
by Type of Farm, 48 States^{1 2 3}**

Type of Farm	January 7-13, 2001	October 7-13, 2001	January 6-12, 2002
	<i>Percent of Field and Livestock Workers</i>	<i>Percent of Field and Livestock Workers</i>	<i>Percent of Field and Livestock Workers</i>
Field Crops	12	15	13
Other Crops	53	57	50
Livestock, Dairy, & Poultry	35	28	37
	100	100	100

**Hired Workers: Distribution by Economic
Class of Farm, 48 States^{1 3}**

Gross Value of Sales	January 7-13, 2001	October 7-13, 2001	January 6-12, 2002
	<i>Percent of Hired Workers</i>	<i>Percent of Hired Workers</i>	<i>Percent of Hired Workers</i>
Less than \$40,000	10	13	7
\$40,000-\$99,999	10	8	6
\$100,000-\$249,999	12	14	12
\$250,000 and over	68	65	75
	100	100	100

Hired Workers: Distribution by Category, United States,^{1 3}

	January 7-13, 2001	October 7-13, 2001	January 6-12, 2002
	<i>Percent of Hired Workers</i>	<i>Percent of Hired Workers</i>	<i>Percent of Hired Workers</i>
Employed on Farms Hiring			
1 Worker	11	10	10
2 Workers	10	9	9
3-6 Workers	20	19	22
7-10 Workers	8	9	8
At least 11 Workers	51	53	51
	100	100	100

¹ 48 States, excluding AK and HI.

² Field and Livestock Workers combined.

³ Excludes Agricultural Service Workers.

Agricultural Services

Crew leaders and custom crews provided 183,000 workers for the Nation's farms and ranches during the week of January 6-12, 2002. Service workers in California numbered 71,000 this January compared with 75,000 last year. Florida's number of service workers was 19,000, compared with 18,000 last year.

The average wage received by agricultural service workers in California and Florida was \$8.36 and \$8.25 per hour, respectively. Comparable wages in January 2001 were \$8.50 in California and \$8.70 in Florida.

Agricultural Service Workers: Number, Hours Worked, and Wage Rates, for California, Florida, and United States ¹

State	Number of Workers Working on Farms			Hours Worked ²			Wage Rates ^{2 3}		
	Jan 2001	Oct 2001	Jan 2002	Jan 2001	Oct 2001	Jan 2002	Jan 2001	Oct 2001	Jan 2002
	<i>1,000</i>	<i>1,000</i>	<i>1,000</i>	<i>Hours</i>	<i>Hours</i>	<i>Hours</i>	<i>Dollars per Hour</i>	<i>Dollars per Hour</i>	<i>Dollars per Hour</i>
CA	75.0	107.0	71.0	27.5	35.7	35.4	8.50	8.63	8.36
FL	18.0	5.0	19.0	29.5	34.0	38.5	8.70	8.70	8.25
US	165.0	262.0	183.0						

¹ Data are for Agricultural Services performed on the farm by custom service units such as crew leaders or custom crews. These statistics are not included in the State-Regional tables.

² United States data not available.

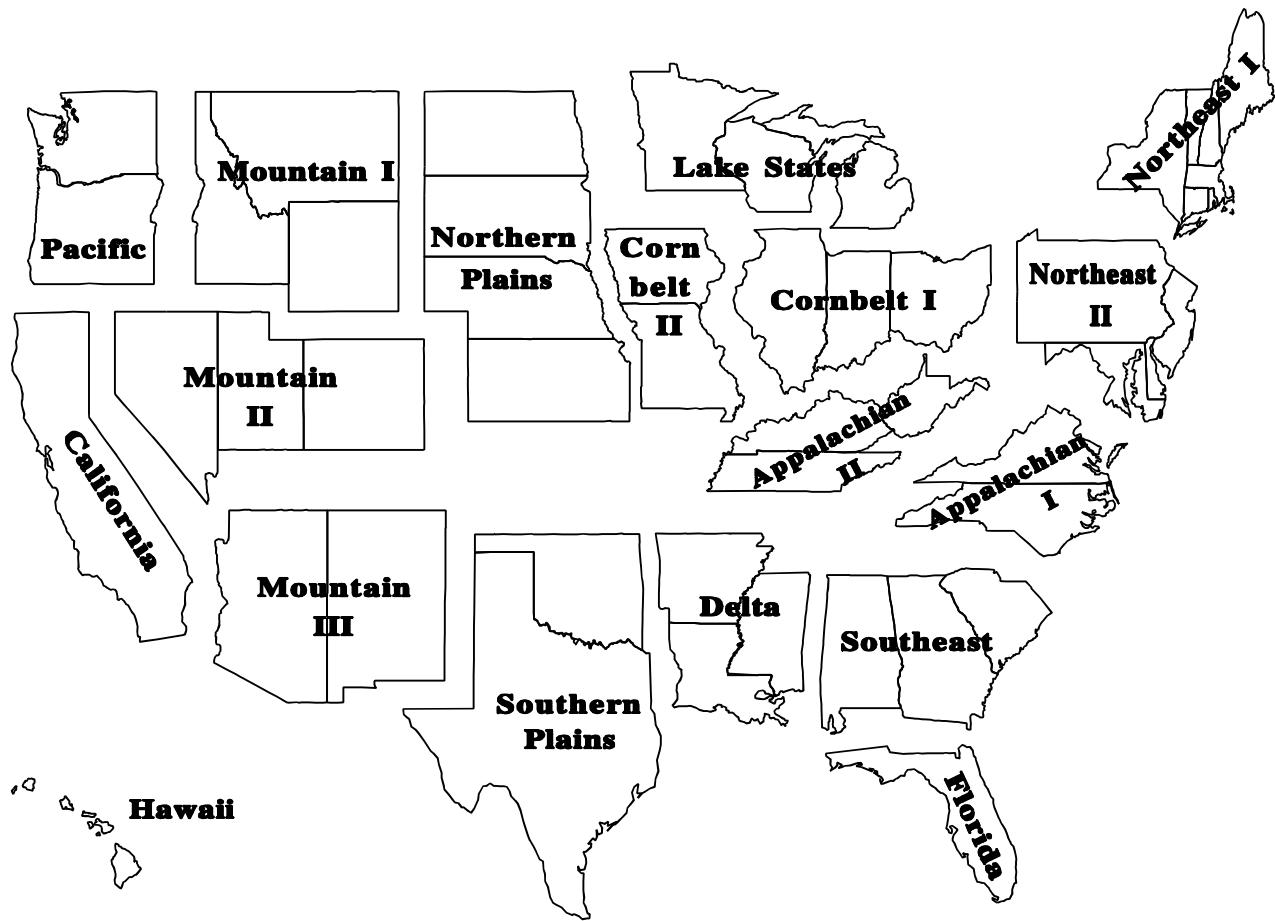
³ Benefits, such as housing and meals, are provided some workers but the values are not included in the wage rates.

Migrant Workers: Percent of all Hired Workers, United States, by Quarter (Includes Agricultural Service Workers), 1999-02 ¹

Year	Jan	Apr	Jul	Oct
	<i>Percent</i>	<i>Percent</i>	<i>Percent</i>	<i>Percent</i>
1999	6.0	8.7	12.4	12.3
2000	7.7	8.5	11.5	11.3
2001	9.6	8.9	11.1	11.7
2002	7.6			

¹ Definition "Migrant Worker" is a farm worker whose employment required travel that prevented the farm worker from returning to his/her permanent place of residence the same day.

Farm Labor Regions



Region	States
Northeast I	CT, ME, MA, NH, NY, RI, VT.
Northeast II	DE, MD, NJ, PA.
Appalachian I	NC, VA.
Appalachian II	KY, TN, WV.
Southeast	AL, GA, SC.
Lake	MI, MN, WI.
Cornbelt I	IL, IN, OH.
Cornbelt II	IA, MO.
Delta	AR, LA, MS.
Northern Plains	KS, NE, ND, SD.
Southern Plains	OK, TX.
Mountain I	ID, MT, WY.
Mountain II	CO, NV, UT.
Mountain III	AZ, NM.
Pacific	OR, WA.

Reliability of Farm Labor Estimates

Survey Procedures: These data were collected by the National Agricultural Statistics Service (NASS) during the last two weeks of January using sampling procedures to ensure every employer of agricultural workers had a chance of being selected.

Two samples of farm operators are selected. First, NASS maintains a list of farms that hire farm workers. Farms on this list are classified by size and type. Those expected to employ large numbers of workers are selected with greater frequency than those hiring few or no workers. A second sample consists of segments of land scientifically selected from an area sampling frame. Each June, highly trained interviewers locate each selected land segment and identify every farm operating land within the sample segment's boundaries. The names of farms found in these area segments are matched against the NASS list of farms; those not found on the list are included in the labor survey sample to represent all farms. This methodology is known as multiple frame sampling, with an area sample used to measure the incompleteness of the list. Additionally, a list of agricultural service firms was sampled in California and Florida. The survey reference week was January 6-12, 2002.

Reliability: Two types of errors, sampling and nonsampling, are possible in an estimate based on a sample survey. Both types affect the "precision" of the estimates.

Sampling error occurs because a complete census is not taken. The sampling error measures the variation in estimates from the average of all possible samples. An estimate of 100 with a sampling error of 1 would mean that chances are 19 out of 20 that the estimates from all possible samples averaged together would be between 98 and 102; which is the survey estimate, plus or minus two times the sampling error. The sampling error expressed as a percent of the estimate is called the relative sampling error. The relative sampling error for number of hired workers at the U.S. level was 4.2 percent. The relative sampling error for the number of hired workers generally ranged between 4 and 21 percent at the regional level. The U.S. all hired farm worker wage rate had a relative sampling error of 1.1 percent. The relative sampling error was 1.1 percent for the combined field and livestock worker wage rate. Relative sampling errors for the all hired farm worker wage rate generally ranged between 1 and 11 percent at the regional levels. Relative sampling errors for wage rates published by type of farm and economic class of farm ranged between 2 and 32 percent at the regional level.

Nonsampling errors can occur in a complete census as well as in sample surveys. They are caused by the inability to obtain correct information from each operation sampled, differences in interpreting questions or definitions, and mistakes in editing, coding, or processing the data. Special efforts are taken at each step of the survey to minimize nonsampling errors.

Revision Policy: Farm labor information is subject to revision the next time the information is published or the year after the original publication date. The basis for revision must be supported by additional data that directly affect the level of the estimate. Worker numbers and wage rates for October 2001 and January 2001 were subject to revision with this report. Revisions were made and previous data are reprinted in this report for your information.

The May 17th report will have information for the survey week of April 7-13, 2002. The report will include the number of All Hired Workers, Average Hours Worked by Hired Workers and the All Hired Worker Wage Rates at the regional and U.S. levels. The wage rate for field, livestock, and combined field and livestock workers will also be available at the regional and U.S. level. The number of Agricultural Service Workers and the corresponding wage rates will be published for California and Florida.

Index

	Page
U.S. Hired Workers on Farms, Wage Rates and Hours Worked	3
Number of Workers and Average Hours Worked by Region and U.S.	
January 2002	4
October 2001	6
January 2001	8
Wage Rates by Region and U.S.	
January 2002	5
October 2001	7
January 2001	9
Agricultural Services: Workers, Average Hours Worked, and Wages	
January 2002	12
October 2001	12
January 2001	12
Other Labor Estimates	
U.S. Distribution of Workers	11
Wage Rates by Type of Farm, by Region and 48 States	10
Wage Rates by Economic Class of Farm, by Region and 48 States	10
Migrant Workers	12
Farm Labor Region Map	13
Reliability of Farm Labor Estimates	14
Revision Policy	14
Next Farm Labor Publication Date	14

The next "Farm Labor" report will be released at 3 p.m. ET on May 17, 2002.

The United States Department of Agriculture (USDA) prohibits discrimination in all its programs on the basis of race, color, national origin, gender, religion, age, disability, political beliefs, sexual orientation, and marital or family status. (Not all prohibited bases apply to all programs.) Persons with disabilities who require alternative means for communication of program information (braille, large print, audiotape, etc.) should contact the USDA's TARGET Center at 202-720-2600 (voice and TDD).

To file a complaint of discrimination, write USDA, Director, Office of Civil Rights, Room 326-W, Whitten Building, 1400 Independence Avenue, SW, Washington, D.C., 20250-9410, or call 202-720-5964 (voice or TDD). USDA is an equal opportunity provider and employer.

ACCESS TO REPORTS!!

For your convenience, there are several ways to obtain NASS reports, data products, and services:

INTERNET ACCESS

All NASS reports are available free of charge on the worldwide Internet. For access, connect to the Internet and go to the NASS Home Page at: <http://www.usda.gov/nass/>. Select "Today's Reports" or Publications and then Reports by Calendar or Publications and then Search, by Title or Subject.

E-MAIL SUBSCRIPTION

There are two options for subscribing via e-mail. All NASS reports are available by subscription free of charge direct to your e-mail address. 1) Starting with the NASS Home Page at <http://www.usda.gov/nass/>, click on **Publications**, then click on the **Subscribe by E-mail** button which takes you to the page describing e-mail delivery of reports. Finally, click on **Go to the Subscription Page** and follow the instructions. 2) If you do NOT have Internet access, send an e-mail message to: usda-reports@usda.mannlib.cornell.edu. In the body of the message type the word: **list**.

AUTOFAX ACCESS

NASSFax service is available for some reports from your fax machine. Please call 202-720-2000, using the handset attached to your fax. Respond to the voice prompts. Document 0411 is a list of available reports.

PRINTED REPORTS OR DATA PRODUCTS

CALL OUR TOLL-FREE ORDER DESK: 800-999-6779 (U.S. and Canada)
Other areas, please call 703-605-6220 FAX: 703-605-6900
(Visa, MasterCard, check, or money order acceptable for payment.)

ASSISTANCE

For **assistance** with general agricultural statistics or further information about NASS or its products or services, contact the **Agricultural Statistics Hotline** at **800-727-9540**, 7:30 a.m. to 4:00 p.m. ET, or e-mail: nass@nass.usda.gov.
