
FLORICULTURE CROPS

**Production Area and Sales, 1980 and 1981.
Intentions for 1982**



**Crop
Reporting
Board**

**Statistical Reporting
Service**

**U.S. Department
of Agriculture**

**Washington, D.C.
20250**

**March 1982
SpCr 6-1 (82)**

CONTENTS

	<u>PAGE</u>
TEXT	3-6
SUMMARY - VALUE OF SALES	7-10
SUMMARY - AVERAGE VALUE PER PRODUCTION AREA UNIT	11, 12
 CUT FLOWERS:	
CARNATIONS, STANDARD	13
CARNATIONS, MINIATURE	13
CHRYSANTHEMUMS, STANDARD	14
CHRYSANTHEMUMS, POMPON	15
GLADIOLI	16
ANTHURIUMS	16
ROSES, HYBRID TEA	17
ROSES, SWEETHEART	18
SNAPDRAGONS	19
 FLOWERING POT PLANTS:	
CHRYSANTHEMUMS	20
GERANIUMS	21
HYDRANGEAS	22
LILIES	23
POINSETTIAS	24
 FOLIAGE AND BEDDING PLANTS:	
FOLIAGE PLANTS	25
BEDDING PLANTS, FLOWERING AND FOLIAR TYPES	26
BEDDING PLANTS, VEGETABLE TYPES	27

SURVEY DEFINITIONS

Data summarized in this report were provided by commercial growers of flowers, foliage plants and bedding plants in 28 States. Geographic coverage for each crop includes only major producing States. A commercial producer is defined as one who had \$10,000 or more in gross sales of cut flowers, flowering and foliage plants, bedding plants, or cultivated florist greens.

Sales represent both retail and wholesale quantities sold in the calendar year shown. Flowers, plants, or materials purchased from others for immediate resale are excluded; for foliage plants this includes plants purchased but held less than 12 weeks; for potted flower plants, those purchased but held less than 6 weeks are excluded. All data for foliage and potted flower plants represent only those grown for indoor or patio use. Value data for cut flower and potted flower crops are on a "gross wholesale" basis, before deductions for sales commissions or transportation costs. Value of sales at wholesale is an equivalent value calculated by applying the average wholesale price to total sales for each State and the U.S. total. Value of sales for foliage plants; however, is on a "net sales" basis and was derived by subtracting the reported cost of plant materials purchased from the total value of all sales (retail and wholesale).

The "area used for production" is defined as the "gross" area used, including walkways and aisles. This includes that area used for growing floriculture crops under glass, plastic, cloth, or lath and outdoors. The area is counted only once if refilled several times with the same crop during the year, but if refilled with different crops, the area is reported under each one grown.

HIGHLIGHTS

The 1981 equivalent wholesale value of all sales for the 17 crops surveyed climbed to \$1.02 billion. This is a \$68.9 million increase, or 7 percent higher than a year earlier. Value of sales for 5 crops declined, while other crops estimated registered increases. The largest increase was for flowering bedding plants with an \$19.9 million gain. Foliage and bedding plants combined accounted for 53 percent of the total wholesale value.

The 1981 value of cut flower sales at \$253 million increased 1 percent from the 1980 crop. The primary contributors to the increase were pompon chrysanthemums and hybrid tea roses. The 1981 value of flowering pot plants sold rose 11 percent to \$232 million.

Sweetheart roses had the highest value per square foot at \$4.26, followed by potted chrysanthemums at \$4.12 and hybrid tea roses at \$3.93 per square foot.

CARNATIONS, STANDARD

The 1981 sales of standard carnations in the six major producing States totaled 346 million blooms, 9 percent less than a year earlier. These blooms were produced from 33.5 million plants grown during the year. The average wholesale price was 11.8 cents per bloom, compared with 11.0 cents in 1980. The wholesale value of the crop amounted to \$40.9 million down 2 percent from 1980. Growers used 20.2 million square feet to produce the crop, 3 percent less than a year earlier. Growers expect to decrease production area 3 percent in 1982.

CARNATIONS, MINIATURE

There were 5.99 million bunches of miniature carnations sold in 1981, up 2 percent from 1980. Producers grew 8.07 million plants during the year. The price per bunch at \$1.60 was 6 cents above the 1980 level. The value of the crop at \$9.61 million was 6 percent higher than 1980. Area in production is expected to increase 10 percent for the 1982 crop.

CHRYSANTHEMUMS, STANDARD

Growers of standard mums in the major producing States sold 86.6 million blooms in 1981. This crop was 8 percent lower than the 1980 production. These blooms were produced from 81.3 million plants grown during the year. The wholesale price at 26.2 cents per bloom was 1.4 cents less than the 1980 average price. The lower production and price resulted in a 12 percent reduction in revenue to \$22.7 million. The 1981 crop utilized 14.6 million square feet of space, 1 percent less than a year earlier. For 1982, growers intend to decrease the area in production by 10 percent.

CHRYSANTHEMUMS, POMPON

Pompon mum sales in 1981 increased 5 percent from the previous year to 36.7 million bunches. These were produced from 139 million plants. The wholesale price increased 1 cent to \$1.09 per bunch and the wholesale value of the crop increased 6 percent to \$40.0 million. Growers used 30.5 million square feet, 4 percent less than 1980, to produce the pompon crop. Area in production is expected to increase fractionally in 1982.

GLADIOLI

Sales of gladioli in the six major producing States in 1981 totaled 136 million spikes, down 7 percent from a year earlier. The average wholesale price increased 1.4 cents to 14.6 cents per spike. Due to the higher wholesale price, the crop value at \$19.9 million was 3 percent more than 1980. Florida's output, the Nation's largest, was down 2 percent in 1981 while production in California was down 19 percent. There were 5205 acres used to grow glads in 1981, off 16 percent from a year earlier. The production area is expected to decline another 2 percent in 1982.

ANTHURIUMS

During 1981, Hawaiian anthurium sales were down to 22.1 million blooms, 16 percent less than in 1980. The average price was unchanged at 23.1 cents per bloom and the value of sales decreased 16 percent to \$5.11 million. Growers used 15.7 million square feet to produce anthuriums, up 12 percent from 1980. Producers expect to increase production an additional 9 percent in 1982.

SNAPDRAGONS

The 1981 sales of snapdragons decreased 1 percent from the previous year to 10.4 million stems. The average wholesale price increased 1.4 cents to 27.3 cents per stem. The crop's wholesale value at \$2.84 million was 4 percent higher than the 1980 value. The area in production was up 5 percent to 1.96 million square feet. Producing area is expected to increase 9 percent in 1982.

ROSES, HYBRID TEA

Producers of hybrid tea roses sold 313 million blooms in 1981, down fractionally from 1980. These blooms were grown on 15.2 million plants. The average price per bloom increased 1.7 cents to 28.8 cents, resulting in a 6 percent increase in wholesale value to \$90.0 million. The production area in roses, at 22.9 million square feet, decreased 3 percent. Growers expect to devote 4 percent less area to tea rose production in 1982.

ROSES, SWEETHEART

During 1981 there were 109 million sweetheart rose blooms sold, 3 percent less than in 1980. These blooms were grown on 3.35 million plants. Price per bloom was unchanged at 19.9 cents. The decreased production caused a 3 percent decrease in total wholesale value to \$21.6 million. Growers reduced the 1981 area of production 7 percent to 5.07 million square feet. They also expect to use 4 percent less area in 1982.

POTTED GERANIUMS

Growers of potted geraniums in the major producing States increased production slightly to 52.6 million pots. The wholesale price increased a dime to 94 cents per pot. These increases in production and price resulted in a 13 percent rise in wholesale value to \$49.5 million. The production area devoted to geraniums was up 2 percent to 20.5 million square feet in 1981 and growers expect to increase area 4 percent more for 1982.

POTTED HYDRANGEAS

The 1981 sales of potted hydrangeas totaled 2.42 million pots, 10 percent below 1980. The average wholesale price received by growers was up 14 cents to \$2.69 per pot. The price increase was not enough to offset the decline in production and wholesale value dropped 6 percent to \$6.52 million. Producers used 2.76 million square feet of production area in 1981, 6 percent less than 1980, and expect another 5 percent reduction in the area used in 1982.

POTTED CHRYSANTHEMUMS

In 1981 growers produced 29.9 million pots of chrysanthemums, 1 percent more than in 1980. The price per pot rose 15 cents to \$2.56. The wholesale value increased 7 percent to \$76.6 million. Growers utilized 18.6 million square feet of area in 1981 and expect to decrease the area 1 percent in 1982.

POTTED LILIES

Sales of potted lilies during 1981 increased 2 percent to 7.25 million pots. An increase of 22 cents in the price per pot to \$3.00, combined with increased sales, boosted the total wholesale value of the crop 10 percent to \$21.8 million. The area in production was up 1 percent to 5.84 million square feet in 1981. The area is expected to decline 2 percent in 1982.

POTTED POINSETTIAS

Producers of potted poinsettias increased sales in 1981 8 percent to 25.7 million pots. The average wholesale price per pot was up 17 cents to \$3.03. The increased production and price resulted in an increase of 15 percent in gross wholesale value to \$77.9 million. Growers used 36.0 million square feet to produce poinsettias in 1981 and expect to increase the utilized area by 2 percent in 1982.

FOLIAGE PLANTS

The 1981 net value of foliage plants sold (for indoor and patio use) increased 5 percent from a year earlier to \$329 million. Increases in Florida, Texas, and Ohio more than offset a decrease in California. Growers used 154 million square feet of production area, up 6 percent from 1980. Growers are planning to increase the area used another 4 percent this year.

BEDDING PLANTS, FLOWERING & FOLIAR

During 1981, the output of flowering and foliar types of bedding plants rose 10 percent from 1980 to 30.1 million flats (11"x22"). The average wholesale price per flat was up 21 cents to \$4.99. The increase in price plus greater production, resulted in a 15 percent increase in wholesale value, up to \$150 million.

There were 50.3 million square feet used for this production, 4 percent more than in 1980. Growers expect to increase production area 5 percent in 1982.

BEDDING PLANTS, VEGETABLE

Sales of vegetable bedding plants in 1981 was up 6 percent from 1980 to 12.2 million flats (excluding production from "open acreage" grown outdoor for commercial vegetable production). The average wholesale price per flat increased 38 cents to \$4.73. The wholesale value of production increased 16 percent to \$57.5 million. The producing area was 20.5 million square feet, 7 percent greater than was used in 1980. Growers are planning to add another 3 percent in area, for 1982.

TABLE 1. WHOLESALE VALUE OF SELECTED FLORICULTURE CROPS 1/

CUT FLOWERS

STATE	CARNATIONS				CHRYSANTHEMUMS			
	STANDARD		MINIATURE		STANDARD		POMPON	
	1980	1981	1980	1981	1980	1981	1980	1981
ALA								
ARK								
CALIF	28,228	29,151	5,775	6,679	16,097	13,995	23,201	27,284
COLO	11,658	10,513	2,225	1,515			2/382	271
CONN			140	122			2/47,444	4/6,350
FLA			2/369	834	2/3/	3/		
GA					2/264	242	2/255	273
ILL					575	582	165	150
IND								
IOWA								
KANS								
MD					254	259		
MASS	150	98	167	128	2/573	642	626	575
MICH					2/263	284	2/468	533
MINN							748	699
MO					539	469	262	233
N J					523	453	289	374
N Y					865	803	996	896
N C	665	356			1,473	1,408	355	317
OHIO	345	281	2/108	192	2/2,163	1,811	2/1,275	993
OREG								
PA	834	537	260	135	1,609	1,158	923	702
TENN					650	592		
TEX								
VA								
WASH								
WIS							348	371
TOTAL	41,880	40,936	9,044	9,605	25,848	22,698	37,737	40,021

1,000 DOLLARS

1/ EQUIVALENT WHOLESALE VALUE OF ALL SALES FOR ALL CROPS EXCEPT FOLIAGE PLANTS; FOR FOLIAGE PLANTS, VALUE IS BASED ON NET VALUE OF SALES.
 2/ 1980 REVISED.
 3/ DATA INCLUDED WITH POMPON CHRYSANTHEMUMS TO AVOID DISCLOSURE OF INDIVIDUAL OPERATIONS.
 4/ DATA INCLUDES SMALL AMOUNT OF STANDARD CHRYSANTHEMUMS.

TABLE 1. WHOLESALE VALUE OF SELECTED FLORICULTURE CROPS 1/ CONTINUED

STATE	CUT FLOWERS							
	GLADIOLI		HYBRID TEA		ROSES		SNAPDRAGONS	
	1980	1981	1980	1981	1980	1981	1980	1981
ALA								
ARK								
CALIF	4,556	3,574	37,008	45,154	6,852	8,205	175	250
COLO			5,288	3,491	1,816	956	34	26
CONN			3/	3/	3/	3/	25	20
FLA	2/11,112	13,150					3/	3/
GA								
ILL	1,035	714	2,642	2,915	561	728	2/111	184
IND			7,069	6,706	2,254	2,307	154	153
IOWA							38	34
KANS								
MD								
MASS			2/2,852	2,645	2/1,566	1,193	162	116
MICH	2/1,263	1,462	2/3,202	3,670	2/1,245	1,383	275	281
MINN			2/1,660	1,963	2/637	680	2/192	208
MO							43	86
N J	1,131	835	935	1,027	3/	3/	25	29
N Y			5,848	5,935	1,529	1,451	205	203
N C	300	169					225	192
OHIO			3,942	4,272	841	912	202	176
OREG			3/	3/			2/245	289
PA			9,025	6,330	3,534	1,893	302	225
TENN							3/	3/
TEX								
VA							81	80
WASH			811	884	389	453		
WIS							17	17
UNALL			2/4,754	5,044	2/1,098	1,442	2/229	273
TOTAL	19,397	19,904	85,036	90,036	22,322	21,603	2,740	2,842

1,000 DOLLARS

1/ EQUIVALENT WHOLESALE VALUE OF ALL SALES FOR ALL CROPS EXCEPT FOLIAGE PLANTS; FOR FOLIAGE PLANTS, VALUE IS BASED ON NET VALUE OF SALES.
 2/ 1980 REVISED.
 3/ UNALLOCATED TO AVOID DISCLOSURE OF INDIVIDUAL OPERATIONS.

TABLE 1. WHOLESALE VALUE OF SELECTED FLORICULTURE CROPS 1/ CONTINUED

STATE	FLOWERING POT PLANTS							
	CHRYSANTHEMUMS		GERANIUMS		HYDRANGEAS		LILIES	
	1980	1981	1980	1981	1980	1981	1980	1981
ALA					187	98	319	269
ARK					113	90	195	193
CALIF	19,612	18,719	2/2,339	3,019	958	1,003	2,928	3,296
COLO	907	967	856	1,280	108	83	371	391
CONN	2/909	1,028	1,031	1,210			397	418
FLA	2/4,472	4,802			2/869	829	2/847	1,108
GA			2/479	561	2/161	139	2/156	149
ILL	2/3,021	3,174	2/2,915	2,622	94	126	2/1,114	1,177
IND	1,236	1,355	1,560	1,902	250	205	338	397
IOWA	2/1,504	1,645	2/1,359	1,381	38	43	491	792
KANS					2/99	97	2/134	125
MD	584	762			3/	3/	293	296
MASS	1,928	1,439	2,924	2,596	82	147	733	955
MICH	2/3,978	4,007	2/4,722	5,344	2/192	255	2/1,488	1,674
MINN	2/1,280	1,685	2/1,666	2,255			795	890
MO	3,177	3,695	2/902	998	189	236	2/975	1,053
N J	1,465	1,406	1,899	1,912	287	299	668	469
N Y	2,868	5,123	5,115	5,927	2/403	300	2/1,205	1,331
N C	3,499	4,343	933	1,187	335	199	482	578
OHIO	2/5,068	5,574	2/6,132	7,002	3/	3/	2/1,536	1,689
OREG			1,648	1,218	3/	3/	2/423	423
PA	2/4,928	4,337	2/3,553	3,834	2/149	188	2/969	1,256
TENN	1,369	1,241			182	156	343	206
TEX	7,129	8,528	2/1,647	2,122	1,029	937	1,052	1,159
VA							349	258
WASH	1,201	1,285	941	1,153	83	89	476	455
WIS	1,173	1,493	1,327	1,995	119	75	689	758
UNALL					970	922		
TOTAL	71,308	76,608	43,948	49,518	6,897	6,516	19,766	21,765

1,000 DOLLARS

1/ EQUIVALENT WHOLESALE VALUE OF ALL SALES FOR ALL CROPS EXCEPT FOLIAGE PLANTS; FOR FOLIAGE PLANTS, VALUE IS BASED ON NET VALUE OF SALES.

2/ 1980 REVISED.

3/ MISSING DATA INCLUDED IN UNALLOCATED TO AVOID DISCLOSURE OF INDIVIDUAL OPERATIONS.

TABLE 1. WHOLESALE VALUE OF SELECTED FLORICULTURE CROPS 1/ CONTINUED

STATE	FLOWERING POT PLANTS			FOLIAGE AND BEDDING PLANTS			BEDDING PLANTS 2/		
	1980	1981	1982	1980	1981	1982	1980	1981	1982
ALA	1,074	995							
ARK	525	579							
CALIF	10,781	12,493		77,352	77,352	26,628	27,935	27,935	5,939
COLO	1,346	1,378		3,412	3,412	2,766	3,563	3,563	505
CONN	1,439	1,579				3/2,180	3,025	3,025	3/1,302
FLA	3/2,514	3,366		162,158	162,158	3/5,247	6,537	6,537	3/2,139
GA	3/1,407	1,450		3/2,056	2,302	3/1,793	2,077	2,077	3/1,403
HAW				6,845	6,845				
ILL	3/3,302	4,682		3/3,350	3,796	3/3,871	4,981	4,981	3/1,390
IND	1,640	1,695				1,831	2,434	2,434	1,026
IOWA	3/1,392	1,718				3/2,614	2,870	2,870	3/1,549
KANS	3/1,112	1,086				3/1,894	2,552	2,552	3/569
MD	1,234	1,636		2,293	2,293	2,079	1,908	1,908	649
MASS	2,333	2,185		3/4,370	4,319	3,041	3,912	3,912	1,920
MICH	3/4,052	4,094		3/4,581	4,980	3/17,648	20,385	20,385	3/5,703
MINN	3/1,517	1,775		3/2,097	2,389	3/4,239	5,046	5,046	3/1,813
MO	1,700	1,992				2,590	3,259	3,259	3/1,346
N J	2,631	2,428		5,304	3,612	3,797	4,059	4,059	1,621
N Y	4,406	4,957		6,326	5,886	7,674	8,400	8,400	3,334
N C	3,483	3,634				2,861	4,215	4,215	1,735
OHIO	3/5,786	6,450		3/13,178	13,988	3/13,563	15,252	15,252	3/5,789
OREG	1,089	1,208		3/2,007	1,277	3/2,774	3,498	3,498	3/1,045
PA	3/3,879	5,289		3/3,939	5,126	5,217	6,403	6,403	3/1,917
TENN	1,612	1,595				1,734	1,519	1,519	922
TEX	3/4,720	6,452		3/26,302	29,425	3/6,461	7,106	7,106	3/3,285
VA						2,199	2,493	2,493	1,125
WASH	1,555	1,463				2,980	3,366	3,366	784
WIS	1,483	1,760				2,844	3,593	3,593	959
TOTAL	66,012	77,939		312,968	329,160	130,525	150,388	150,388	49,769

1,000 DOLLARS

1/ EQUIVALENT WHOLESALE VALUE OF ALL SALES FOR ALL CROPS EXCEPT FOLIAGE PLANTS; FOR FOLIAGE PLANTS, VALUE IS BASED ON NET VALUE OF SALES.
 2/ EXCLUDES VALUE OF SALES FROM "OPEN ACREAGE" GROWN OUTDOORS.
 3/ 1980 REVISED.

TABLE 2. AVERAGE VALUE OF SELECTED FLORICULTURE CROPS 1981 1/

STATE	CUT FLOWERS									
	CARNATIONS	CHRYSTANTHEMUMS	GLADIOLI	ROSES	SNAPDRAGONS	STANDARD: MINIATURE	STANDARD: POMPON	HYBRID TEA	SWEETHEART	
	DOLLARS PER SQ FT	DOLLARS PER ACRE	DOLLARS PER ACRE	DOLLARS PER SQ FT	DOLLARS PER SQ FT	DOLLARS PER ACRE	DOLLARS PER ACRE	DOLLARS PER SQ FT	DOLLARS PER SQ FT	DOLLARS PER SQ FT
ALA										
ARK										
CALIF	1.74	1.95	1.25	1.64	7,400	3.29	3.24	3.24	2.12	
COLO	3.48	4.00				4.33	3.03	3.03	2.17	
CONN		6.78		2.42		2/	2/	2/	1.18	
FLA		2.13	3/	3/.61	3,704	3.56	6.44	6.44	1.48	
ILL			2.42	1.82	2,183	5.02	6.12	6.12	2.28	
IND			3.11	1.10					.97	
IOWA									1.93	
MD			2.82						1.31	
MASS	2.51	2.91	3.29	2.13		4.25	4.19	4.19	1.34	
MICH			1.96	2.42	3,323	6.80	6.33	6.33	2.87	
MINN				2.25		5.67	5.71	5.71	.81	
MO			3.13	3.11					1.65	
N J			2.31	1.69	2,676	6.38	2/	2/	1.26	
N Y			1.88	1.93		6.40	5.69	5.69	1.83	
N C	3.49	6.86	2.33	2.58	1,817	5.09	4.98	4.98	1.86	
OHIO	2.55		3.22	2.06		2/			1.00	
OREG						4.48	5.05	5.05	2/	
PA	2.11	4.50	2.33	1.14					1.86	
TENN			2.34						.81	
TEX										
VA						3.20	4.92	4.92		
WASH										
WIS				2.10						
UNALL										
TOTAL	2.02	2.22	1.56	1.31	3,824	3.93	4.26	4.26	1.45	

1/ BASED ON EQUIVALENT WHOLESAL VALUE FOR ALL SALES.
 2/ UNALLOCATED TO AVOID DISCLOSURE OF INDIVIDUAL OPERATIONS.
 3/ 1981 DATA INCLUDED WITH POMPON CHRYSTANTHEMUMS TO AVOID DISCLOSURE OF INDIVIDUAL OPERATIONS.

TABLE 2. AVERAGE VALUE OF SELECTED FLORICULTURE CROPS 1981 1/ CONTINUED

STATE	FLOWERING POT PLANTS				FOLIAGE AND BEDDING PLANTS			
	CHRYSANTHEMUMS	GERANIUMS	HYDRANGEAS	LILIES	POINSETTIAS	FOLIAGE PLANTS	BEDDING PLANTS	FLOWERING : VEGETABLE
	DOLLARS PER SQ FT							
ALA			2.23	3.49	1.85			
ARK			2.73	6.66	2.74			
CALIF	4.42	1.56	1.98	3.59	2.21	4.42	3.39	2.77
COLO	6.62	3.18	2.18	4.60	2.71	9.27	3.01	4.35
CONN	2.71	2.16		2.90	2.49		2.98	2.69
FLA	2.54	2.09	1.63	2.89	1.19	1.46	4.39	3.66
GA			2.67	3.39	2.05	4.16	2.17	2.64
HAW						1.50		
ILL	3.97	2.30	4.06	4.04	2.90	4.31	3.07	2.68
IND	4.87	2.40	2.14	2.88	2.37		2.63	2.63
IOWA	6.69	2.60	3.91	4.74	2.85		3.86	3.82
KANS			2.31	3.13	1.97		3.74	4.04
MD	4.03		2/	4.00	2.79	4.36	2.83	2.73
MASS	3.31	2.28	2.07	3.96	2.26	6.28	2.81	2.71
MICH	3.38	2.61	2.83	3.49	1.94	4.00	2.68	2.38
MINN	4.87	2.81		4.36	2.59	5.53	2.56	2.51
MO	5.61	2.75	3.63	2.56	2.24		3.32	3.51
N J	3.20	2.25	1.99	4.04	1.74	3.77	2.53	2.38
N Y	3.84	2.76	3.19	4.23	2.42	4.07	3.02	2.59
N C	4.10	1.98	3.16	4.13	1.63		2.54	2.95
OHIO	4.02	2.59	2/	3.59	2.33	8.79	2.54	2.34
OREG		2.54	2/	4.19	1.91	4.12	4.10	2.89
PA	3.55	2.23	2.85	3.60	2.11	3.98	2.18	2.03
TENN	4.28		2.64	2.78	2.19		2.92	2.82
TEX	5.41	2.19	2.53	4.71	2.40	2.76	4.43	5.20
VA				4.61			3.43	3.21
WASH	7.14	3.67	2.62	4.55	2.44		3.52	2.94
WIS	5.03	2.82	3.41	5.05	2.71		3.12	3.20
UNAIL			2.91					
TOTAL	4.12	2.42	2.36	3.72	2.16	2.14	2.99	2.81

1/ BASED ON EQUIVALENT WHOLESALE VALUE FOR ALL SALES FOR ALL CROPS EXCEPT FOLIAGE; FOR FOLIAGE, BASED ON NET VALUE OF SALES.

2/ UNALLOCATED TO AVOID DISCLOSURE OF INDIVIDUAL OPERATIONS.

TABLE 3. CARNATIONS, STANDARD

STATE	PRODUCERS		PLANTS GROWN		PRODUCTION AREA		BLOOMS SOLD		PERCENT OF SALES AT WHOLESALE		WHOLESALE PRICE		VALUE OF SALES AT WHOLESALE 1/	
	1980	1981	1980	1981	1980	1981	1980	1981	1980	1981	1980	1981	1980	1981
	NUMBER	1,000 PLANTS	1,000 SQ FT	PERCENT	1,000 BLOOMS	PERCENT	1,000 BLOOMS	PERCENT	CENTS	1,000 DOLLARS				
CALIF	179	27,816	25,519	16,547	16,317	99	288,044	265,005	100	100	9.8	11.0	28,228	29,151
COLO	75	8,996	6,985	3,575	3,021	97	79,850	72,006	99	100	14.6	14.6	11,658	10,513
MASS	9	100	83	50	1	3	752	704	96	97	20.0	13.9	150	98
N C	8	399	182	217	102	56	4,493	2,546	95	95	14.8	14.0	665	356
OHIO	39	36	176	117	102	93	1,726	1,384	49	48	20.0	20.3	345	281
PA	50	42	613	558	294	88	4,510	4,102	83	79	18.5	13.1	834	537
TOTAL	364	331	38,155	33,503	20,800	20,249	19,647	97	379,375	345,747	99	99	41,880	40,936

TABLE 4. CARNATIONS, MINIATURE

STATE	PRODUCERS		PLANTS GROWN		PRODUCTION AREA		BUNCHES SOLD		PERCENT OF SALES AT WHOLESALE		WHOLESALE PRICE		VALUE OF SALES AT WHOLESALE 1/	
	1980	1981	1980	1981	1980	1981	1980	1981	1980	1981	1980	1981	1980	1981
	NUMBER	1,000 PLANTS	1,000 SQ FT	PERCENT	1,000 BUNCHES	PERCENT	1,000 BUNCHES	PERCENT	DOLLARS	1,000 DOLLARS				
CALIF	98	97	5,390	5,517	3,278	3,433	3,691	108	4,246	4,394	99	100	1.36	1.52
COLO	35	30	955	858	413	379	546	144	1,107	851	100	100	2.01	1.78
CONN	5	4	55	51	21	18	17	94	62	49	86	97	2.26	2.48
FLA 2/	4	4	657	1,444	344	391	408	104	222	488	100	100	1.66	1.71
MASS	7	6	86	75	56	44	37	84	105	65	98	99	1.59	1.97
OHIO 2/	20	18	42	60	17	28	21	75	44	67	73	73	2.46	2.86
PA	24	18	124	60	55	30	36	120	105	75	71	78	2.48	1.80
TOTAL	193	177	7,309	8,065	4,184	4,323	4,756	110	5,891	5,989	98	99	1.54	1.60

1/ EQUIVALENT WHOLESALE VALUE OF ALL SALES.

2/ 1980 REVISED.

TABLE 5. CHRYSANTHEMUMS, STANDARD

STATE	PRODUCERS		PLANTS GROWN		PRODUCTION AREA		BLOOMS SOLD		PERCENT OF SALES AT WHOLESALE		WHOLESALE PRICE		VALUE OF SALES AT WHOLESALE 1/		
	1980	1981	1980	1981	1980	1981	1980	1981	1980	1981	1980	1981	1980	1981	
	NUMBER	1,000 PLANTS	1,000 SQ FT	PERCENT	1,000 BLOOMS	PERCENT	1,000 BLOOMS	PERCENT	CENTS	1,000 DOLLARS					
CALIF	140	70,599	66,686	10,772	11,152	9,854	88	73,169	68,267	99	99	22.0	20.5	16,097	13,995
FLA 2/	45	447	412	98	100	112	112	552	497	58	66	47.8	48.6	264	242
ILL 3/	43	1,024	1,045	210	187	171	91	1,125	1,060	75	73	51.1	54.9	575	582
IND	17	395	263	88	92	93	101	407	382	69	79	62.4	67.7	254	259
MD	38	782	890	173	195	156	80	1,110	1,171	82	79	51.6	54.8	573	642
MASS 3/	45	465	470	136	145	148	102	463	470	70	75	56.8	60.4	263	284
MICH 3/	21	1,092	940	189	150	161	107	1,122	920	92	85	48.0	51.0	539	469
MO	38	770	778	281	196	183	93	907	893	82	79	57.7	50.7	523	453
N J	89	1,858	1,465	366	428	425	99	1,902	1,539	77	75	45.5	52.2	865	803
N Y	30	2,838	2,411	697	603	491	81	3,748	3,815	97	97	39.3	36.9	1,473	1,408
M C	121	4,090	2,845	810	563	532	94	4,631	3,750	70	72	46.7	48.3	2,163	1,811
OHIO 3/	119	3,009	2,106	690	497	505	102	3,059	2,438	65	61	52.6	47.5	1,609	1,158
PA	13	1,208	1,010	258	253	215	85	1,558	1,360	94	100	41.7	43.5	650	592
TENN	806	88,577	81,301	14,768	14,561	13,046	90	93,753	86,562	95	95	27.6	26.2	25,848	22,698
TOTAL															

1/ EQUIVALENT WHOLESALE VALUE OF ALL SALES.

2/ DATA INCLUDED WITH POMPOON CHRYSANTHEMUMS TO AVOID DISCLOSURE OF INDIVIDUAL OPERATIONS.

3/ 1980 REVISED.

TABLE 6. CHRYSANTHEMUMS, POMPOON

STATE	PRODUCERS		PLANTS GROWN		PRODUCTION AREA		BUNCHES SOLD		PERCENT OF SALES AT WHOLESALE		WHOLESALE PRICE		VALUE OF SALES AT WHOLESALE 1/	
	1980	1981	1980	1981	1980	1981	1980	1981	1980	1981	1980	1981	1980	1981
	NUMBER	1,000 PLANTS	1,000 SQ FT	PERCENT	1,000 BUNCHES	PERCENT	DOLLARS	PERCENT	DOLLARS	PERCENT	DOLLARS	PERCENT	1,000 DOLLARS	1,000 DOLLARS
CALIF	178	91,577	16,683	104	24,422	99	.95	94	23,201	99	1.00	94	23,201	27,284
CONN 2/	25	348	112	90	160	37	2.73	40	382	37	3.04	40	382	271
FLA 2/ 3/	19	36,052	10,439	95	6,318	100	1.18	100	7,444	100	1.07	100	7,444	6,350
ILL 2/	49	447	150	110	152	41	1.68	40	255	41	1.72	40	255	273
IND	42	360	136	93	122	58	1.35	55	165	55	1.18	55	165	150
MASS	63	773	270	98	335	31	1.87	55	626	55	1.83	55	626	575
MICH 2/	59	460	220	105	234	66	2.00	67	748	66	2.25	67	748	533
MINN 2/	60	1,242	310	100	374	79	2.00	79	262	79	1.97	79	262	699
MO	20	402	75	84	147	70	1.78	70	233	70	1.70	70	233	233
N J	44	685	221	88	149	52	1.94	52	289	52	1.92	52	289	374
N Y	119	1,932	465	87	527	66	1.89	66	996	66	1.84	66	996	896
N C	12	431	123	79	203	100	1.75	95	355	100	1.91	95	355	317
OHIO 2/	118	1,558	481	103	671	47	1.90	59	993	47	1.78	59	993	993
PA	115	2,689	618	99	932	65	.99	51	923	65	1.36	51	923	702
WIS	45	604	177	89	174	58	2.00	53	348	58	2.38	53	348	371
TOTAL	968	139,560	30,480	100	36,900	95	1.08	92	37,737	95	1.09	92	37,737	40,021

1/ EQUIVALENT WHOLESALE VALUE OF ALL SALES.

2/ 1980 REVISED.

3/ 1981 DATA INCLUDES SMALL AMOUNT OF STANDARD CHRYSANTHEMUMS TO AVOID DISCLOSURE OF INDIVIDUAL OPERATIONS.

TABLE 7. GLADIOLI

STATE	PRODUCERS		PRODUCTION AREA		SPIKES SOLD		PERCENT OF SALES AT WHOLESALE		WHOLESALE PRICE		VALUE OF SALES AT WHOLESALE 1/	
	1980	1981	1980	1981	1980	1981	1980	1981	1980	1981	1980	1981
	NUMBER		ACRES		PERCENT	1,000 SPIKES	PERCENT		CENTS		1,000 DOLLARS	
CALIF	4	5	660	483	92	20,160	16,245	100	22.6	22.0	4,556	3,574
FLA 2/	8	8	4,014	3,550	100	92,600	90,691	100	12.0	14.5	11,112	13,150
ILL	14	14	599	327	94	11,126	8,112	99	9.3	8.8	1,035	714
MICH 2/	17	16	435	440	97	9,353	9,680	95	13.5	15.1	1,263	1,462
N J	17	10	367	312	94	11,090	9,600	99	10.2	8.7	1,131	835
N C	7	5	108	93	90	2,273	1,676	100	13.2	10.1	300	169
TOTAL	67	58	6,183	5,205	98	146,602	136,004	100	13.2	14.6	19,307	19,904

1/ EQUIVALENT WHOLESALE VALUE OF ALL SALES.

2/ 1980 REVISED.

TABLE 8. ANTHRURIUMS

STATE	PRODUCERS		PRODUCTION AREA		BLOOMS SOLD		PERCENT OF SALES AT WHOLESALE		PRICE PER BLOOM 1/		VALUE OF SALES 2/	
	1980	1981	1980	1981	1980	1981	1980	1981	1980	1981	1980	1981
	NUMBER		1,000 SQ FT		PERCENT	1,000 BLOOMS	PERCENT		CENTS		1,000 DOLLARS	
HAW 2/3/	72	74	14,024	15,661	109	26,360	22,140	95	23.1	23.1	6,089	5,114

1/ AVERAGE PRICE RECEIVED BY GROWERS AT FIRST POINT OF SALE.

2/ DERIVED FROM AVERAGE PRICE RECEIVED FOR ALL SALES.

3/ 1980 REVISED.

TABLE 9. ROSES, HYBRID TEA

STATE	PRODUCERS		PLANTS GROWN		PRODUCTION AREA		BLOOMS SOLD		PERCENT OF SALES AT WHOLESALE		WHOLESALE PRICE		VALUE OF SALES AT WHOLESALE 1/	
	1980	1981	1980	1981	1980	1981	1980	1981	1980	1981	1980	1981	1980	1981
	NUMBER	1,000 PLANTS	1,000 SQ FT	PERCENT	1,000 BLOOMS	PERCENT	1,000 BLOOMS	PERCENT	1,000 DOLLARS	PERCENT	1,000 DOLLARS	CENTS	1,000 DOLLARS	1,000 DOLLARS
CALIF	80	8,897	13,444	13,713	12,988	95	177,070	188,927	100	100	20.9	23.9	37,008	45,154
COLO	14	911	1,572	806	919	114	22,598	13,222	100	100	23.4	26.4	5,288	3,491
CONN 2/ 3/														
ILL.	12	552	819	819	802	98	10,084	10,132	100	100	26.2	28.7	2,642	2,915
IND	15	975	1,343	1,337	1,286	96	16,712	16,277	97	98	42.3	41.2	7,069	6,706
MASS 2/	12	415	400	555	626	100	9,445	7,346	98	99	30.2	36.0	2,852	2,645
MICH 2/	12	447	546	540	500	93	7,116	7,182	99	99	45.0	51.1	3,202	3,670
MINN 2/	20	255	245	351	327	95	4,439	4,718	90	91	37.4	41.6	1,660	1,963
N J	7	125	169	161	161	100	2,068	1,923	89	87	45.2	53.4	935	1,027
N Y	16	758	707	927	915	99	17,563	14,098	100	99	33.3	42.1	5,848	5,935
OHIO 2/	14	690	906	840	827	98	11,425	12,275	99	96	34.5	34.8	3,942	4,272
OREG 3/														
PA	19	1,136	1,500	1,413	1,407	100	17,942	20,420	95	96	50.3	31.0	9,025	6,330
WASH	6	185	253	276	206	75	2,451	2,081	100	99	33.1	42.5	811	884
UNALL	7	676	1,141	1,120	1,147	102	14,718	14,354	90	100	32.3	35.1	4,754	5,044
TOTAL	234	16,022	15,234	23,595	22,111	96	313,631	312,955	99	99	27.1	28.8	85,034	90,036

1/ EQUIVALENT WHOLESALE VALUE OF ALL SALES.

2/ 1980 REVISED.

3/ MISSING DATA INCLUDED IN UNALLOCATED TO AVOID DISCLOSING INDIVIDUAL OPERATIONS.

TABLE 10. ROSES, SWEETHEART

STATE	PRODUCERS		PLANTS GROWN		PRODUCTION AREA		BLOOMS SOLD		PERCENT OF SALES AT WHOLESALE		WHOLESALE PRICE		VALUE OF SALES AT WHOLESALE 1/	
	1980	1981	1980	1981	1980	1981	1980	1981	1980	1981	1980	1981	1980	1981
	NUMBER	1,000 PLANTS	1,000 SQ FT	PERCENT	1,000 BLOOMS	PERCENT	1,000 BLOOMS	PERCENT	1,000 DOLLARS	PERCENT	1,000 DOLLARS	CENTS	1,000 DOLLARS	PERCENT
CALIF	67	1,728	1,537	2,569	2,535	100	50,017	53,979	100	100	13.7	15.2	6,852	8,205
COLO	15	220	190	376	173	55	8,566	6,168	100	100	21.2	15.5	1,816	956
CONN 2/3/	7	94	94	114	112	99	2,387	2,461	100	100	23.5	20.6	561	728
ILL	8	275	265	404	377	102	9,714	9,228	99	99	23.2	25.0	2,254	2,307
IND	9	188	190	288	288	101	6,472	4,812	99	99	24.2	24.8	1,566	1,193
MASS 2/	5	140	140	166	160	96	3,430	3,500	97	100	36.3	39.5	1,245	1,383
MICH 2/	16	95	83	125	111	93	3,031	2,645	94	94	21.0	25.7	637	680
MINN 2/	12	192	206	248	255	94	6,019	6,228	100	100	25.4	23.3	1,529	1,451
N J 3/	13	166	146	202	183	102	4,450	4,449	100	97	18.9	20.5	861	912
OHIO	17	434	294	606	375	99	11,665	9,278	97	94	30.3	20.4	3,534	1,803
PA	4	58	56	86	74	80	1,513	1,438	100	100	25.7	31.5	389	453
WASH	7	179	146	293	256	100	4,772	4,497	99	100	23.0	32.1	1,098	1,442
UNALL	186	3,769	3,347	5,477	4,893	96	112,036	108,684	99	99	19.9	19.9	22,322	21,603
TOTAL														

1/ EQUIVALENT WHOLESALE VALUE OF ALL SALES.

2/ 1980 REVISED.

3/ MISSING DATA INCLUDED IN UNALLOCATED TO AVOID DISCLOSURE OF INDIVIDUAL OPERATIONS.

TABLE 11. SNAPDRAGONS

STATE	PRODUCERS		PRODUCTION AREA		STEMS SOLD		PERCENT OF SALES AT WHOLESALE		WHOLESALE PRICE		VALUE OF SALES AT WHOLESALE 1/	
	1980	1981	1980	1981	1980	1981	1980	1981	1980	1981	1980	1981
	NUMBER		1,000 SQ FT	PERCENT	1,000 STEMS	PERCENT	CENTS			1,000 DOLLARS		
CALIF	9	149	118	155	1,021	974	100	100	17.1	25.7	175	250
COLO	5	16	12	13	107	65	51	69	31.9	40.7	34	26
CONN	13	23	17	17	91	63	39	42	27.2	31.5	25	20
FLA 2/ 3/	42	108	124	138	478	663	60	56	23.2	27.7	111	184
ILL 2/	31	83	67	66	464	396	66	65	33.2	38.7	154	153
IND	17	31	35	34	109	100	53	69	34.7	34.4	38	34
IOWA	11	84	60	60	495	298	88	87	32.8	38.9	162	116
MD	36	190	214	227	982	947	87	83	28.0	29.7	275	281
MASS	48	155	155	165	674	667	56	60	28.5	31.2	192	208
MICH 2/	26	22	30	30	123	178	12	50	34.8	48.3	43	86
MINN 2/	12	23	36	37	120	104	90	85	20.5	28.0	25	29
MO	34	127	123	132	811	833	78	84	25.3	24.4	205	203
N J	55	147	152	143	720	610	38	57	31.3	31.4	225	192
N Y	17	124	96	115	792	685	90	80	25.5	25.7	202	176
N C	60	144	155	174	765	967	34	40	32.0	29.9	245	289
OHIO 2/	62	212	224	254	1,267	841	56	62	23.8	26.7	302	225
PA	13	46	43	46	370	340	86	87	22.0	23.5	81	80
TENN 3/	20	26	21	22	49	38	28	27	34.2	43.9	17	17
VA	8	152	280	314	1,130	1,657	100	99	20.3	16.5	229	273
WIS	503	1,862	1,962	2,142	10,568	10,426	72	75	25.9	27.3	2,740	2,842
UNALL	8	10	280	314	1,130	1,657	100	99	20.3	16.5	229	273
TOTAL	527	1,862	1,962	2,142	10,568	10,426	72	75	25.9	27.3	2,740	2,842

1/ EQUIVALENT WHOLESALE VALUE OF ALL SALES.

2/ 1980 REVISED.

3/ MISSING DATA INCLUDED IN UNALLOCATED TO AVOID DISCLOSURE OF INDIVIDUAL OPERATIONS.

TABLE 12. POTTED CHRYSANTHEMUMS

STATE	PRODUCERS		PRODUCTION AREA		POTS SOLD		PERCENT OF SALES AT WHOLESALF		WHOLESALE PRICE		VALUE OF SALES AT WHOLESALF 1/	
	1980	1981	1980	1981	1980	1981	1980	1981	1980	1981	1980	1981
	NUMBER		1,000 SQ FT		PERCENT	1,000 POTS		PERCENT	DOLLARS		1,000 DOLLARS	
					1982			1982				
					AS % OF			AS % OF				
					1980			1980				
					1981			1981				
					1982			1982				
					1980			1980				
					1981			1981				
					1982			1982				
					1980			1980				
					1981			1981				
					1982			1982				
					1980			1980				
					1981			1981				
					1982			1982				
					1980			1980				
					1981			1981				
					1982			1982				
					1980			1980				
					1981			1981				
					1982			1982				
					1980			1980				
					1981			1981				
					1982			1982				
					1980			1980				
					1981			1981				
					1982			1982				
					1980			1980				
					1981			1981				
					1982			1982				
					1980			1980				
					1981			1981				
					1982			1982				
					1980			1980				
					1981			1981				
					1982			1982				
					1980			1980				
					1981			1981				
					1982			1982				
					1980			1980				
					1981			1981				
					1982			1982				
					1980			1980				
					1981			1981				
					1982			1982				
					1980			1980				
					1981			1981				
					1982			1982				
					1980			1980				
					1981			1981				
					1982			1982				
					1980			1980				
					1981			1981				
					1982			1982				
					1980			1980				
					1981			1981				
					1982			1982				
					1980			1980				
					1981			1981				
					1982			1982				
					1980			1980				
					1981			1981				
					1982			1982				
					1980			1980				
					1981			1981				
					1982			1982				
					1980			1980				
					1981			1981				
					1982			1982				
					1980			1980				
					1981			1981				
					1982			1982				
					1980			1980				
					1981			1981				
					1982			1982				
					1980			1980				
					1981			1981				
					1982			1982				
					1980			1980				
					1981			1981				
					1982			1982				
					1980			1980				
					1981			1981				
					1982			1982				
					1980			1980				
					1981			1981				
					1982			1982				
					1980			1980				
					1981			1981				
					1982			1982				
					1980			1980				
					1981			1981				
					1982			1982				
					1980			1980				
					1981			1981				
					1982			1982				
					1980			1980				
					1981			1981				
					1982			1982				
					1980			1980				
					1981			1981				
					1982			1982				
					1980			1980				
					1981			1981				
					1982			1982				
					1980			1980				
					1981			1981				
					1982			1982				
					1980			1980				
					1981			1981				
					1982			1982				
					1980			1980				
					1981			1981				
					1982			1982				
					1980			1980				
					1981			1981				
					1982			1982				
					1980			1980				
					1981			1981				
					1982			1982				
					1980			1980				
					1981			1981				
					1982			1982				
					1980			1980				
					1981			1981				
					1982			1982				
					1980			1980				
					1981			1981				
					1982			1982				
					1980			1980				
					1981			1981				
					1982			1982				
					1980			1980				
					1981			1981				
					1982			1982				
					1980			1980				
					1981			1981				
					1982			1982				
					1980			1980				
					1981			1981				
					1982			1982				
					1980			1980				
					1981			1981				
					1982			1982				
					1980			1980				
					1981			1981				
					1982			1982</				

TABLE 13. POTTED GERANIUMS

STATE	PRODUCERS		PRODUCTION AREA		INTENDED: AS % OF		POTS SOLD		PERCENT OF SALES AT		WHOLESALE PRICE		VALUE OF SALES AT	
	1980	1981	1980	1981	1981	1982	1980	1981	1980	1981	1980	1981	1980	1981
	NUMBER		1,000 SQ FT		PERCENT	1,000 POTS	PERCENT		PERCENT	DOLLARS		DOLLARS		1,000 DOLLARS
CA, I P 2/	24	34	1,750	1,933	1,919	1,856	2,111	100	98	1.26	1.43	2,339	3,019	
COLO	53	47	357	403	416	865	1,306	80	92	.99	.98	856	1,280	
CONN 2/	84	93	390	560	569	912	1,017	70	88	1.13	1.19	1,031	1,210	
GA 2/	63	64	220	268	315	563	597	87	83	.85	.94	479	561	
ILL 2/	140	139	1,317	1,138	1,174	3,555	2,850	67	70	.82	.92	2,915	2,622	
IND	123	131	738	794	808	1,926	2,319	71	75	.81	.82	1,560	1,902	
IOWA 2/	112	112	515	531	539	1,401	1,409	65	67	.97	.98	1,359	1,381	
MASS	190	185	1,252	1,138	1,423	3,111	2,733	57	69	.94	.95	2,924	2,596	
MICH 2/	260	255	2,068	2,050	2,070	6,745	6,765	77	77	.70	.79	4,722	5,344	
MINN 2/	155	161	717	802	820	2,221	2,534	58	65	.75	.89	1,666	2,255	
MO 2/	68	68	353	363	385	1,100	1,188	83	75	.82	.84	902	998	
N J	176	150	1,024	851	894	2,499	2,223	80	72	.76	.86	1,899	1,912	
N Y	323	346	2,021	2,145	2,170	5,560	5,539	70	69	.92	1.07	5,115	5,927	
N C	90	97	487	599	618	1,037	1,164	88	87	.90	1.02	933	1,187	
OHIO 2/	348	328	3,221	2,699	2,800	10,220	8,644	83	78	.60	.81	6,132	7,002	
OREG	61	62	461	479	488	1,298	1,339	92	94	1.27	.91	1,648	1,218	
PA 2/	259	271	1,549	1,718	1,852	3,625	4,167	72	69	.98	.92	3,553	3,834	
TEX 2/	93	104	867	968	1,011	1,307	1,302	95	96	1.26	1.63	1,647	2,122	
WASH	37	44	265	314	303	990	1,078	70	64	.95	1.07	941	1,153	
WIS	87	99	549	707	747	1,618	2,320	67	74	.82	.86	1,327	1,995	
TOTAL	2,746	2,790	20,121	20,460	21,321	52,409	52,605	76	76	.84	.94	43,948	49,518	

1/ EQUIVALENT WHOLESALE VALUE OF ALL SALES.
2/ 1980 REVISED.

TABLE 14. POTTED HYDRANGEAS

STATE	PRODUCERS		PRODUCTION AREA		POTS SOLD		PERCENT OF SALES AT WHOLESALE		WHOLESALE PRICE		VALUE OF SALES AT WHOLESALE 1/	
	1980	1981	1980	1981	1980	1981	1980	1981	1980	1981	1980	1981
	NUMBER		1,000 SQ FT		PERCENT	1,000 POTS	PERCENT	DOLLARS		DOLLARS	1,000 DOLLARS	
ALA 2/	10	87	44	46	105	48	26	98	3.90	3.75	187	98
ARK	5	50	33	35	106	46	30	100	2.46	3.01	113	90
CALIF	21	487	506	422	83	370	411	100	2.59	2.44	958	1,003
COLO	11	10	38	36	95	29	22	96	3.74	3.75	108	83
FLA 2/	15	17	477	508	99	362	319	100	2.40	2.60	869	829
GA 2/	20	18	63	57	110	51	41	93	3.16	3.38	161	139
ILL 2/	22	32	31	24	77	26	27	91	3.63	4.67	94	126
IND 2/	20	110	96	69	72	65	58	97	3.85	3.54	250	205
IOWA	10	14	8	10	91	12	12	91	3.14	3.55	38	43
KANS 2/	13	41	42	43	102	27	24	97	3.66	4.04	99	97
MD 3/												
MASS	16	37	71	47	66	25	36	53	3.26	4.07	82	147
MICH 2/	37	84	90	87	97	61	79	89	3.15	3.40	192	255
MO	10	60	65	70	108	55	64	98	3.44	3.69	189	236
N J	20	16	132	150	101	102	94	98	2.81	3.18	287	299
N Y 2/	41	38	129	96	102	155	97	95	2.60	3.09	403	300
N C	21	205	63	60	95	96	56	98	3.49	3.55	335	199
OHIO 3/												
OREG 3/												
PA 2/	35	44	66	66	100	46	60	87	3.23	3.13	149	188
TENN	18	19	79	67	114	61	48	99	2.99	3.25	182	156
TEX	39	38	382	370	98	289	221	98	3.56	4.24	1,029	937
WASH	11	9	33	33	97	25	25	94	3.30	3.55	83	89
WIS	27	21	26	20	91	32	24	69	3.73	3.12	119	75
UNALL	53	59	315	317	102	721	649	99	1.35	1.42	970	922
TOTAL	475	485	2,939	2,762	95	2,704	2,423	97	2.55	2.69	6,897	6,516

1/ EQUIVALENT WHOLESALE VALUE OF ALL SALES.

2/ 1980 REVISED.

3/ MISSING DATA INCLUDED IN UNALLOCATED TO AVOID DISCLOSURE OF INDIVIDUAL OPERATIONS.

TABLE 15. POTTED LILIES

STATE	PRODUCERS		PRODUCTION AREA		POTS SOLD		PERCENT OF SALES AT WHOLESALE		WHOLESALE PRICE		VALUE OF SALES AT WHOLESALE 1/	
	1980	1981	1980	1981	1980	1981	1980	1981	1980	1981	1980	1981
	NUMBER		1,000 SQ FT		PERCENT	1,000 POTS		PERCENT	DOLLARS		1,000 DOLLARS	
ALA	11	9	131	77	81	105	104	77	97	3.07	3.49	319
ARK	5	5	35	29	25	86	67	62	100	2.91	3.12	195
CALIF	22	24	921	917	870	95	1,195	1,351	100	2.45	2.44	2,928
COLO	17	14	95	85	58	68	139	125	96	2.67	3.13	371
CONN	42	48	99	144	138	96	110	113	85	3.61	3.70	397
FLA 2/	15	17	374	384	430	112	331	378	100	2.56	2.93	847
GA 2/	12	13	64	44	99	225	58	49	98	2.69	3.04	156
ILL 2/	60	55	285	291	288	99	356	369	91	3.13	3.19	1,114
IND	43	52	123	138	118	86	105	119	92	3.22	3.34	338
IOWA	35	35	104	167	142	85	158	238	93	3.11	3.33	491
KANS 2/	29	24	46	40	42	105	48	38	88	2.80	3.29	134
MD	24	24	63	74	79	107	80	85	82	3.66	3.48	293
MASS	78	78	193	241	263	109	245	293	68	2.99	3.26	733
MICH 2/	107	105	476	480	474	99	553	600	93	2.69	2.79	1,488
MINN	64	65	208	204	211	103	277	288	87	2.87	3.09	795
MO 2/	22	28	410	412	359	87	387	418	98	2.52	2.52	975
N J	74	59	193	116	101	87	225	130	91	2.97	3.61	668
N Y	141	143	286	315	313	99	414	401	81	2.91	3.32	1,331
N C	26	22	128	140	132	94	171	180	96	2.82	3.21	482
OHIO 2/	158	150	426	470	455	97	537	531	91	2.86	3.18	1,536
OREG 2/	12	14	87	101	107	106	139	158	100	3.04	2.68	423
PA 2/	144	164	288	349	342	98	389	413	76	2.49	3.04	969
TENN	20	21	72	74	69	93	123	67	84	2.79	3.08	343
TEX	42	45	344	246	243	99	368	298	91	2.86	3.89	1,052
VA 2/	23	21	70	56	56	100	108	81	85	3.23	3.18	349
WASH	14	11	114	100	102	102	170	144	97	2.80	3.16	476
WIS	51	52	160	150	150	100	248	246	81	2.78	3.08	689
TOTAL	1,291	1,298	5,795	5,844	5,747	98	7,105	7,252	91	2.78	3.00	19,766
												21,765

1/ EQUIVALENT WHOLESALE VALUE OF ALL SALES.
2/ 1980 REVISED.

TABLE 16. POTTED POINSETTIAS

STATE	PRODUCERS		PRODUCTION AREA		POTS SOLD		PERCENT OF SALES AT WHOLESALE PRICE		VALUE OF SALES AT WHOLESALE 1/		
	1981	1980	1981	1980	1981	1980	1981	1980	1981	1980	1981
	NUMBER	1,000 SQ FT	PERCENT	1,000 POTS	PERCENT	DOLLARS	DOLLARS	PERCENT	DOLLARS	1,000 DOLLARS	1,000 DOLLARS
ALA	20	693	108	351	97	3.06	1.96	96	1.074	995	995
ARK	8	199	105	198	99	2.65	2.91	99	525	579	579
CALIF	64	5,637	98	3,892	100	2.77	2.91	100	10,781	12,493	12,493
COLO	30	557	106	418	81	3.22	3.47	96	1,346	1,378	1,378
CONN	57	585	102	417	87	3.45	4.08	85	1,439	1,579	1,579
FLA 2/	30	1,895	102	982	100	2.56	2.51	99	2,514	3,366	3,366
GA 2/	56	811	117	529	90	2.66	3.16	95	1,407	1,450	1,450
ILL 2/	94	1,757	101	1,072	89	3.08	3.51	92	3,302	4,682	4,682
IND	75	718	99	466	86	3.52	3.66	86	1,640	1,695	1,695
IOWA 2/	61	532	99	427	82	3.26	3.71	85	1,392	1,718	1,718
KANS 2/	40	514	104	337	93	3.30	3.25	93	1,112	1,086	1,086
MD	42	600	106	365	79	3.38	3.99	77	1,234	1,636	1,636
MASS	112	980	98	760	57	3.07	3.31	74	2,333	2,185	2,185
MICH 2/	158	2,130	101	1,479	88	2.74	2.81	84	4,052	4,094	4,094
MINN	89	634	101	457	80	3.32	3.40	84	1,517	1,775	1,775
MO	52	786	106	607	96	2.80	3.25	94	1,700	1,992	1,992
N J	126	1,678	100	1,247	92	2.11	2.74	88	2,631	2,428	2,428
N Y	221	2,048	103	1,602	83	2.75	2.59	86	4,406	4,957	4,957
N C	73	1,992	104	1,244	94	2.80	2.59	94	3,483	3,634	3,634
OHIO 2/	248	2,712	104	1,948	85	2.97	3.00	85	5,786	6,450	6,450
OREG	25	615	101	378	98	2.88	2.85	98	1,089	1,208	1,208
PA 2/	207	1,950	104	1,521	81	2.55	2.70	79	3,879	5,289	5,289
TENN	51	671	97	554	90	2.91	2.96	88	1,612	1,595	1,595
TEX 2/	114	2,183	107	1,448	98	3.26	3.78	98	4,720	6,452	6,452
WASH	31	659	101	520	93	2.99	3.34	93	1,555	1,463	1,463
WIS	73	595	100	586	82	2.53	2.88	83	1,483	1,760	1,760
TOTAL	2,157	34,131	102	23,805	90	2.86	3.03	90	68,012	77,939	77,939

1/ EQUIVALENT WHOLESALE VALUE OF ALL SALES.
2/ 1980 REVISED.

TABLE 17. FOLIAGE PLANTS FOR INDOOR OR PATIO USE

STATE	PRODUCERS		PRODUCTION AREA		PERCENT OF SALES AT		NET VALUE		
	1980	1981	1980	1981	1980	1981	1980	1981	
	NUMBER		1,000 SQ FT		PERCENT		1,000 DOLLARS		
CALIF 2/	225	223	18,527	17,509	17,219	98	96	479,043	77,352
COLO	29	26	525	368	380	103	94	3,947	3,412
FLA 2/	470	491	104,190	111,094	116,478	105	100	148,909	162,158
GA 2/	41	51	598	553	607	110	94	2,056	2,302
HAW 2/	59	59	3,363	4,565	4,625	101	99	5,012	6,845
ILL 2/	80	78	823	880	860	98	69	3,350	3,796
MD	30	29	432	526	511	97	80	2,547	2,293
MASS 2/	84	94	611	688	664	97	60	4,370	4,319
MICH 2/	140	145	1,296	1,245	1,200	96	69	4,581	4,980
MINN 2/	72	80	445	432	424	98	70	2,097	2,389
N J	115	106	1,337	958	966	101	80	5,304	3,612
N Y	202	216	1,486	1,445	1,504	104	61	6,326	5,886
OHIO 2/	145	125	1,681	1,591	1,627	102	86	13,178	13,988
OREG 2/	38	28	454	310	289	93	76	2,007	1,277
PA 2/	123	146	1,038	1,289	1,295	100	78	3,939	5,126
TEX 2/	200	189	8,927	10,652	11,255	106	94	26,302	29,425
TOTAL	2,053	2,086	145,733	154,105	159,904	104	97	312,968	329,160

1/ GROSS VALUE OF SALES LESS COST OF PLANT MATERIALS PURCHASED FROM OTHER GROWERS FOR GROWING ON.
 2/ 1980 REVISED.

TABLE 18. BEDDING PLANTS--FLOWERING AND FOLIAR TYPES

STATE	PRODUCERS		PRODUCTION AREA		AS % OF:		FLATS SOLD		PERCENT OF SALES AT		WHOLESALE PRICE		VALUE OF SALES AT	
	1980	1981	1980	1981	1980	1981	1980	1981	1980	1981	1980	1981	1980	1981
	NUMBER		1,000 SQ FT		PERCENT	1,000 FLATS	PERCENT	DOLLARS	PERCENT	DOLLARS	PERCENT	DOLLARS	PERCENT	1,000 DOLLARS
CALIF	63	69	8,000	8,242	9,766	118	4,498	5,251	96	5.92	99	26,628	99	27,935
COLO	68	57	1,119	1,184	1,126	95	575	571	83	4.81	86	2,766	86	3,563
CONN 2/	85	90	978	1,015	1,036	102	533	574	74	4.09	87	2,180	87	3,025
FLA 2/	37	35	1,676	1,490	1,701	114	1,302	1,388	100	4.03	99	5,247	99	6,537
GA 2/	59	58	984	959	1,098	114	430	498	87	4.17	87	1,793	87	2,077
ILL 2/	133	139	1,625	1,623	1,668	103	868	914	72	4.46	63	3,871	63	4,981
IND	119	134	881	927	947	102	417	528	57	4.39	62	1,831	62	2,434
IOWA 2/	117	117	736	743	773	104	375	424	51	6.97	59	2,614	59	2,870
KANS 2/	53	47	638	683	697	102	266	359	61	7.12	76	1,894	76	2,552
MD	45	41	911	674	719	107	456	450	66	4.56	74	2,079	74	1,908
MASS	179	173	1,350	1,394	1,396	100	749	748	39	4.06	42	3,041	42	3,912
MICH 2/3/	320	310	7,349	7,603	7,699	101	4,572	4,842	86	3.86	88	17,648	88	20,385
MINN 2/	171	174	1,812	1,968	2,026	103	785	873	61	5.40	62	4,239	62	5,046
MO	75	80	931	981	976	99	533	608	86	4.86	92	2,590	92	3,239
N J	134	114	1,668	1,605	1,607	100	796	871	78	4.77	82	3,797	82	4,059
N Y	316	345	2,683	2,777	2,804	101	1,544	1,573	63	4.97	60	7,674	60	8,400
N C	94	112	1,184	1,662	1,829	110	618	880	89	4.63	88	2,861	88	4,215
OHIO 2/	337	325	6,328	6,002	6,063	101	3,300	3,259	82	4.11	78	13,563	78	15,252
OREG 2/	56	53	746	854	870	102	421	566	82	6.59	90	2,774	90	3,498
PA 2/	252	285	2,159	2,936	3,076	105	1,245	1,646	67	4.19	69	5,217	69	6,403
TENN	57	59	567	520	546	105	410	328	76	4.23	76	1,734	76	1,519
TEX 2/	83	90	1,216	1,605	1,648	103	1,061	1,351	95	6.09	98	6,461	98	7,106
VA	52	46	662	726	757	104	465	487	75	4.73	77	2,199	77	2,493
WASH	42	53	1,018	956	934	98	521	495	85	5.72	82	2,980	82	3,366
WIS	90	100	923	1,153	1,154	100	561	636	68	5.07	65	2,844	65	3,593
TOTAL	3,037	3,106	48,144	50,282	52,916	105	27,301	30,120	81	4.78	82	130,525	82	150,388

1/ EQUIVALENT WHOLESALE VALUE OF ALL SALES.

2/ 1980 REVISED.

3/ DOES NOT INCLUDE "OPEN ACREAGE" GROWN OUTDOORS.

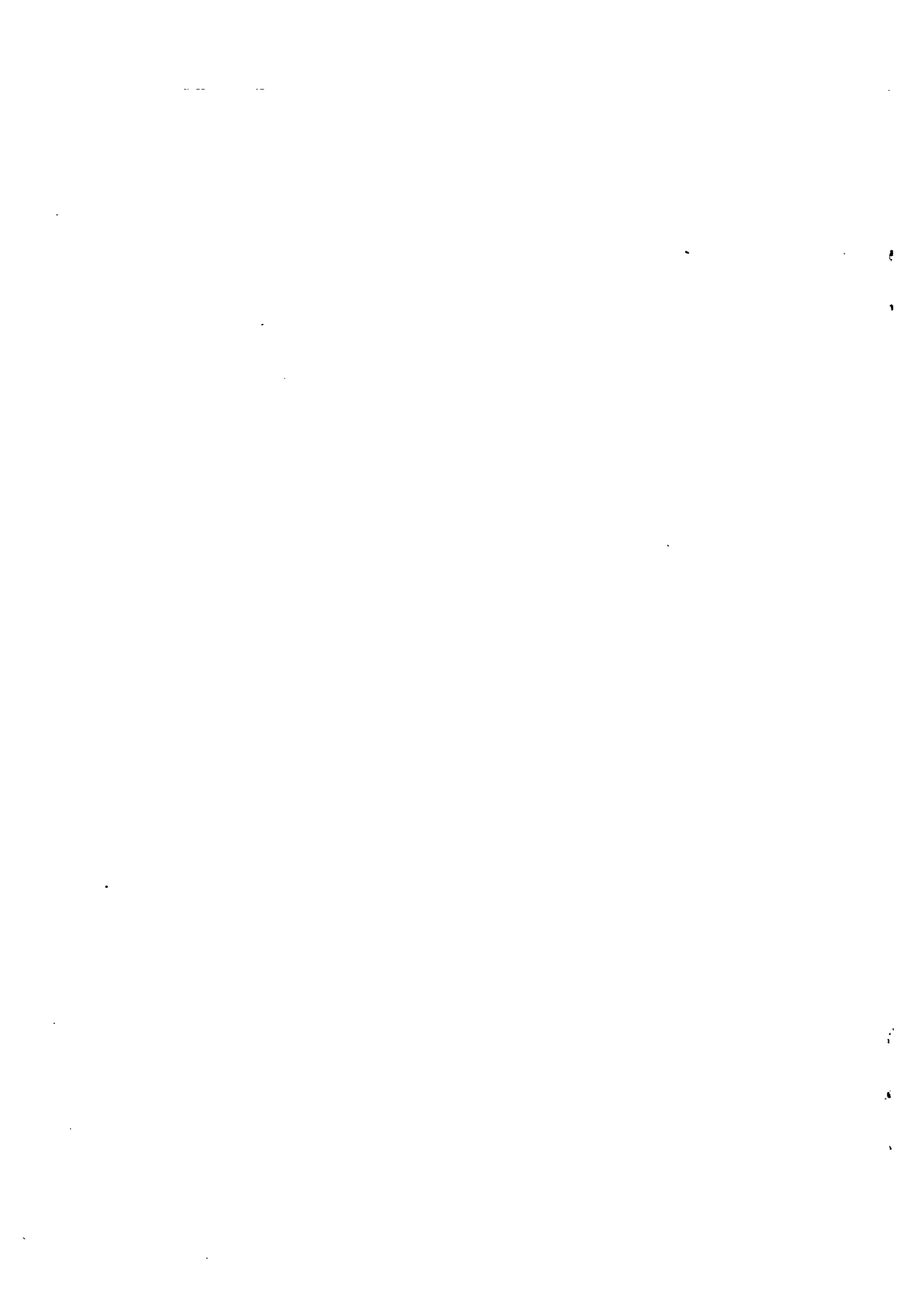
TABLE 19. BEDDING PLANTS--VEGETABLE TYPES 1/

STATE	PRODUCERS		PRODUCTION AREA		FLATS SOLD		PERCENT OF SALES AT WHOLESALE		WHOLESALE PRICE		VALUE OF SALES AT WHOLESALE 2/	
	1980	1981	1980	1981	1980	1981	1980	1981	1980	1981	1980	1981
	NUMBER		1,000 SQ FT		PERCENT	1,000 FLATS	PERCENT	DOLLARS		DOLLARS	1,000 DOLLARS	
CALIF	39	41	1,800	2,200	2,352	1,280	1,210	99	4.64	5.03	5,939	6,086
COLO	62	54	265	270	226	125	138	71	4.04	6.93	505	956
CONN 3/	84	88	615	680	687	320	347	85	4.07	5.28	1,302	1,832
FLA	19	18	640	482	487	852	717	100	2.51	2.46	2,139	1,764
GA 3/	56	56	617	556	640	339	294	85	4.14	4.90	1,403	1,467
ILL 3/	121	129	666	612	637	339	328	65	4.10	5.00	1,390	1,640
IND	114	132	452	495	500	228	283	49	4.50	4.60	1,026	1,302
IOWA 3/	118	118	411	415	434	221	238	42	7.01	6.67	1,549	1,587
KANS 3/	50	43	275	215	218	100	130	52	5.69	6.68	569	868
MD	38	32	233	223	224	152	140	74	4.27	4.35	649	609
MASS	167	163	751	595	588	412	314	36	4.66	5.14	1,920	1,614
MICH 3/	280	280	2,577	2,600	2,700	1,533	1,586	84	3.72	3.90	5,703	6,185
MINN 3/	160	164	762	818	854	326	353	57	5.56	5.81	1,813	2,051
MO 3/	76	83	470	503	493	272	299	81	4.95	5.91	1,346	1,767
N J	114	106	815	630	632	342	338	74	4.74	4.44	1,621	1,501
N Y	295	326	1,224	1,525	1,515	699	806	62	4.77	4.90	3,334	3,949
N C	90	101	646	780	853	389	441	86	4.46	5.21	1,735	2,298
OHIO 3/	325	303	2,661	2,793	2,749	1,375	1,456	77	4.21	4.48	5,789	6,523
OREG 3/	48	52	340	379	381	164	179	81	6.37	6.11	1,045	1,094
PA 3/	201	231	880	1,156	1,231	581	662	60	3.30	3.55	1,917	2,350
TENN	49	60	268	449	463	214	282	72	4.31	4.49	922	1,266
TEX 3/	80	82	748	997	1,087	594	981	97	5.53	5.28	3,285	5,180
VA	45	44	339	366	381	243	225	64	4.63	5.22	1,125	1,175
WASH	34	46	315	357	360	132	166	76	5.94	6.33	784	1,051
WIS	86	98	330	444	450	197	258	65	4.87	5.50	959	1,419
TOTAL	2,751	2,850	19,100	20,490	21,142	11,429	12,171	78	4.35	4.73	49,769	57,534

1/ DOES NOT INCLUDE "OPEN ACREAGE" OF VEGETABLE TRANSPLANTS GROWN OUTDOORS FOR USE IN COMMERCIAL VEGETABLE PRODUCTION.

2/ EQUIVALENT WHOLESALE VALUE OF ALL SALES.

3/ 1980 REVISED.



March 10, 1982

IMPLEMENTATION DATES OF SRS PROGRAM ADJUSTMENTS

I. Affecting Livestock, Dairy and Poultry Branch reports:

A. Reports and Data Series
Eliminated

	<u>Release Date</u>	<u>Final Issue</u> <u>Period/Date Covered</u>
1. Weekly Butter and American Cheese	April 6, 1982	Week ending April 1, 1982
2. Catfish		
a. Processors	March 22, 1982	February 1982
b. Producers	February 25, 1982	1981
3. Honey	January 15, 1982	1981
4. Lamb Crop and Wool (July)	July 21, 1981	1981
5. Mink	July 7, 1981	1980
6. Sheep and Lambs on Feed (including early lamb crop)	March 17, 1982	March 1, 1982
7. Trout	October 1981	Sept. 1980 - Aug. 1981

B. Data Series Eliminated from
Ongoing Reports

1. Separate estimates of table and hatching eggs, pullorum-typhoid testings (Eggs, Chickens and Turkeys)	March 23, 1982	February 1982
2. Breakout of dairy feed ingredients (Milk Prod.)	Nov. 13, 1981	October 1981
3. Manufacturing grade milk prices including selling prices for specified products, milkfat test data (Dairy Products) <u>Note:</u> Manufacturing grade milk price will continue monthly in Price Report.	April 29, 1982	March 1982

2

.

C. <u>State Estimates</u> <u>Reductions</u>	<u>Effective Issue</u>		<u>State Estimates</u> <u>Eliminated</u>	
	<u>Release Date</u>	<u>Date Covered</u>		
1. Cattle	July 26, 1982	July 1, 1982	All State estimates eliminated	
2. Quarterly Cattle on Feed	April 19, 1982	April 1, 1982	Ind Mich Mo Mont N Mex	N Dak Ohio Oreg Pa Wis
3. Hogs and Pigs a. March and September	Sept. 22, 1982	Sept. 1, 1982	Ky S Dak	Tex Wis
b. June	June 22, 1982	June 1, 1982	Ala Ky Mich Miss N Dak Okla	Pa S C S Dak Tenn Tex Va Wis
D. <u>Report Frequency</u> <u>Reduced from Mo.</u> <u>to Quarterly</u>	<u>Final Monthly Issue</u>		<u>First Quarterly Issue</u>	
	<u>Release Date</u>	<u>Period/Date</u> <u>Covered</u>	<u>Release Date</u>	<u>Period/Date</u> <u>Covered</u>
1. Cold Stg.	Apr. 19, 1982	Mar. 31, 1982	July 19, 1982	June 30, 1982
2. Dairy Prod.	Apr. 29, 1982	Mar. 1982	Aug. 2, 1982	Apr.-June 1982
3. Eggs, Chickens and Turkeys (egg prod. data--33 mo. States, hatchery est. to continue monthly)	Mar. 23, 1982	Feb. 1982	June 23, 1982	Mar.-May 1982
4. Livestock Slaughter	Apr. 23, 1982	Mar. 1982	July 22, 1982	Apr.-June 1982
5. Milk Prod. (33 mo. States)	Apr. 13, 1982	Mar. 1982	July 16, 1982	Apr.-June 1982

.....

24

II. Affecting Crops Branch Reports:

A. Reports and Data Services Eliminated

	<u>Release Date</u>	<u>Final Issue</u> <u>Period/Date Covered</u>
1. Alfalfa Seed Forecast	October 16, 1981	October 1, 1981
2. Commercial Apples by Varieties	January 13, 1982	1981
3. Commercial Fertilizers Monthly	February 26, 1981	December 1981
4. Commercial Fertilizers Consumption by Class	December 4, 1981	July 1, 1980 - June 30, 1981
5. Field Crops: Production Disposition and Value	April 1981	1980
6. Field Seed Stocks	August 7, 1981	July 1, 1981
7. Floriculture Crops	March 8, 1982	1981 - Intentions 1982
8. Gum Naval Stores	February 19, 1982	January 1982
9. Maple Sirup	May 15, 1981	1980
10. Onion Stocks	January 12, 1982	January 1, 1982
11. Producer Owned Grain Stocks	January 29, 1982	January 1, 1982
12. Popcorn	January 14, 1982	1981
13. Red Clover Seed Forecast	October 7, 1981	October 1, 1981
14. Seed Crops - Annual Report	January 12, 1982	1981
15. Sugar Distribution-Weekly	March 4, 1982	Week Ending February 28, 1982
16. Sugar Market Statistics	February 25, 1982	January 1982
17. Tall Fescue Seed Forecast Oregon and Southern States	August 7, 1981	August 1, 1981
18. Timothy Seed Forecast	August 21, 1981	August 1, 1981
19. Vegetable Seeds Acreage and Production	March 24, 1981	1981
20. Vegetable Seed Stocks	August 17, 1981	June 30, 1981

—

2 2

B. <u>Data Series Eliminated from Ongoing Reports</u>	<u>Release Date</u>	<u>Final Issue Period/Date Covered</u>
1. Winter Wheat Yield for Following Year (Small Grains)	December 22, 1981	December 1, 1981
2. Corn, Durum and Other Spring Wheat - July 1 Forecast (Crop Production)	July 10, 1981	July 1, 1981
3. Dry Edible Pea Estimates (Crop Production, Prospective Plantings, Acreage)	January 14, 1982	1981
4. Blueberries and Bushberries Estimates (Crop Production and Non-citrus Fruits and Nuts)	January 13, 1982	1981
5. Pickle Stocks (November Vegetable Report)	November 12, 1981	November 1, 1981
6. Wheat Pasture (Crop Production)	December 10, 1981	December 1981
7. <u>Fresh Market Vegetables:</u> Artichokes, Brussels Sprouts, Cantaloups, Cucumbers, Garlic, Watermelons (Vegetables Annual Summary)	December 28, 1981	1981
Snap Beans, Cabbage, Eggplant, Escarole/Endive, Green Peppers, Spinach (Vegetables)	January 7, 1982	Acres for Harvest, First Quarter, 1982
Asparagus (Vegetables)	March 4, 1982	California Area for Harvest, 1982
8. <u>Processing Vegetables</u> Cabbage for Kraut, Asparagus (Vegetable Annual Summary)	December 28, 1981	1981
Lima Beans, Beets, Cucumbers for Pickles, Spinach (Vegetables)	March 22, 1982	Contract Planted Acres, 1982

~ ~

<u>C. Report Frequency Reduced:</u>	<u>Release Date</u>	<u>Final Issue Period/Date Covered</u>
-------------------------------------	---------------------	--

- | | | |
|---|----------------|---------------|
| 1. Monthly Peanut Stocks and Processing | March 24, 1982 | March 1, 1982 |
|---|----------------|---------------|

To be issued bi-annually in February and August.

2. Cranberries - will be dropped from the October and November Crop Production Reports and estimated only in August and January.
3. Peppermint and spearmint for oil reported in the June, August and September Crop Production reports will be available only in the January Annual Crop Summary.
4. Tobacco by 7 Classes and 21 Types currently reported in the January, May, July, September, October, November and December issues of Crop Production will be available only in August and January.

Monthly forecasts of total tobacco production by States (July-November) will be continued.

