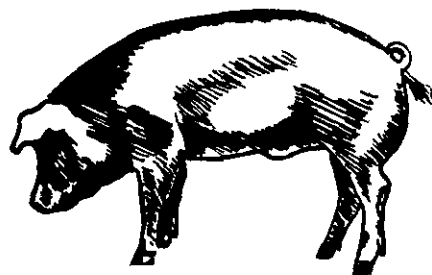


HOGS AND PIGS

SEPTEMBER 1968 (10 Corn Belt States)



In this issue:

- ★ September 1 Inventory
- ★ Sows Farrowing
- ★ Pig Crop

Release:

September 20, 1968
12:00 Noon (E. D. T.)

There were 47.1 million hogs and pigs on farms in the 10 Corn Belt States on September 1, 1968, as estimated by the Crop Reporting Board. This is 1 percent above the 46.5 million head a year earlier and 2 percent higher than the 46.1 million head on September 1, 1966. The 10 States included in this report are Ohio, Indiana, Illinois, Wisconsin, Minnesota, Iowa, Missouri, South Dakota, Nebraska, and Kansas.

Inventory numbers on September 1, 1968 were larger than a year earlier in 6 of the 10 States. Nebraska was up 10 percent; Minnesota and Kansas were each up 7 percent; Missouri, up 6 percent; South Dakota, up 5 percent; and Wisconsin, up 1 percent. Iowa was unchanged from last year. Inventories in Ohio, Indiana, and Illinois were down 1 to 5 percent from a year earlier.

The number of hogs and pigs kept for breeding on September 1, 1968 for the 10 States totaled 6,607,000 head. This is 5 percent above the 6,314,000 head a year earlier. Market hogs and pigs (formerly called other hogs and pigs) totaled 40,528,000 head, 1 percent higher than the 40,148,000 head on September 1, 1967. All of the increase in market hogs and pigs was in the under-60 pound group which, at 14,664,000 head, was up 715,000 head. The number in each of the other weight groups on hand September 1, 1968 and the declines from a year earlier were: 60-119 pounds, 10,370,000 head, down 57,000; 120-179 pounds, 9,453,000 head, down 193,000; 180-219 pounds, 5,116,000 head, down 60,000; and 220 pounds and over, 925,000 head, down 25,000.

UNITED STATES DEPARTMENT OF AGRICULTURE

Statistical Reporting Service
MtAn 4 (9-68)

Crop Reporting Board
Washington, D. C. 20250

JUNE-AUGUST PIG CROP

The June-August 1968 pig crop in the 10 States is estimated at 17,408,000 head, 5 percent above a year earlier. The Western Corn Belt States showed the largest increases, with Nebraska up 16 percent. Sows farrowing in the 10 States during June-August 1967 totaled 2,355,000 -- also 5 percent above the year-earlier period. Sows farrowing in each of 10 States were equal to or above the June-August period a year earlier. The average number of pigs per litter for June-August farrowings in the 10-States increased slightly to 7.39 from 7.38 a year earlier.

SEPTEMBER-NOVEMBER INTENTIONS

Sows bred for farrowing in the 10 States during September, October and November totaled 2,306,000 head, 4 percent more than farrowed in the same months a year earlier. Increases are indicated for all 10 States, ranging from 1 percent in Missouri and South Dakota to 10 percent in Nebraska.

DECEMBER 1968-FEBRUARY 1969 INTENTIONS

Farrowing intentions for the December 1968-February 1969 quarter in the 10 States are 4 percent above farrowings in the same months a year earlier. If these expectations are carried out 1,815,000 sows will farrow during those months compared with 1,747,000 a year earlier. Three States -- Ohio, Indiana and Minnesota -- have reported intentions to farrow 4 to 6 percent fewer sows, while increases in intentions in six States range from 4 to 14 percent. No change is indicated for Missouri.

Hogs and Pigs: Number on farms, sows farrowing and pig crop, selected States, average and 1966-69

Item	Average 1962-66	1966	1967	1968	1968 as percent of 1967
	1,000 head	1,000 head	1,000 head	1,000 head	Percent
<u>Number on Farms-September 1:</u>					
All hogs and pigs	47,592	46,145	46,462	47,135	101
Breeding	---	6,255	6,314	6,607	105
Market	---	39,890	40,148	40,528	101
<u>Market hogs and pigs</u>					
<u>by weight groups</u>					
Under 60 pounds	---	13,640	13,949	14,664	105
60-119 pounds	---	10,903	10,427	10,370	99
120-179 pounds	---	9,452	9,646	9,453	98
180-219 pounds	---	4,955	5,176	5,116	99
220 pounds and over	---	940	950	925	97
<u>Sows farrowing</u>					
March-May	3,440	3,270	3,330	3,234	97
June-August	2,264	2,290	2,250	2,355	105
September-November	2,128	2,154	2,211	1/2,306	104
<u>Pig crop</u>					
March-May	24,951	24,055	24,544	24,168	98
June-August	16,344	16,476	16,606	17,408	105
September-November	15,489	15,749	16,372	---	---
<u>Pigs per litter</u>					
March-May	7.25	7.36	7.37	7.47	101
June-August	7.22	7.19	7.38	7.39	100
September-November	7.28	7.31	7.40	---	---

Item	Average 1962-66	1967	1968	1969	1969 as percent of 1968
	1,000 head	1,000 head	1,000 head	1,000 head	Percent
<u>Sows farrowing</u>					
December 2/-February	1,722	1,745	1,747	1/1,815	104
<u>Pig crop</u>					
December 2/-February	12,310	12,770	12,719	---	---
<u>Pigs per litter</u>					
December 2/-February	7.16	7.32	7.28	---	---

1/ As indicated by reports on breeding intentions.

2/ December preceding year.

Hogs and Pigs: Number on farms, breeding, market, and total,
June 1, 1967 and 1968, selected States

State	Breeding			Market			Total		
	1968			1968			1968		
	1967	Number	As % of 1967	1967	Number	As % of 1967	1967	Number	As % of 1967
	1,000 head	1,000 head	Percent	1,000 head	1,000 head	Percent	1,000 head	1,000 head	Percent
Ohio	366	382	104	2,158	2,167	100	2,524	2,549	101
Indiana	660	586	89	3,652	3,597	98	4,312	4,183	97
Illinois	1,077	1,087	101	6,101	5,876	96	7,178	6,963	97
Wisconsin	309	307	99	1,410	1,446	103	1,719	1,753	102
Minnesota	514	547	106	2,915	3,053	105	3,429	3,600	105
Iowa	2,192	2,082	95	13,140	12,790	97	15,332	14,872	97
Missouri	626	668	107	3,545	3,670	104	4,171	4,338	104
S. Dakota	329	315	96	1,795	1,936	108	2,124	2,251	106
Nebraska	474	526	111	2,915	3,100	106	3,389	3,626	107
Kansas	227	243	107	1,396	1,494	107	1,623	1,737	107
Total 10 States	6,774	6,743	100	39,027	39,129	100	45,801	45,872	100
Hawaii	10	10	100	58	56	97	68	66	97

Market Hogs and Pigs: Number on farms, by weight groups,
June 1, 1967 and 1968, selected States

State	Under 60 lbs.		60-119 lbs.		120-179 lbs.		180-219 lbs.		220 lbs. and over	
	1967	1968	1967	1968	1967	1968	1967	1968	1967	1968
	1,000 head									
Ohio	993	949	583	598	388	412	162	176	32	32
Indiana	1,643	1,547	986	917	639	737	311	324	73	72
Illinois	2,989	2,820	1,556	1,410	946	998	458	483	152	165
Wisconsin	900	897	258	265	145	166	77	88	30	30
Minnesota	1,662	1,695	641	672	350	366	189	244	73	76
Iowa	7,030	6,881	2,956	2,814	1,774	1,663	986	985	394	447
Missouri	1,843	1,908	745	734	532	569	319	330	106	129
S. Dakota	1,256	1,268	278	348	144	165	79	97	38	58
Nebraska	1,662	1,736	612	666	364	388	204	232	73	78
Kansas	621	672	363	389	230	239	144	157	38	37
Total 10 States	20,599	20,373	8,978	8,813	5,512	5,703	2,929	3,116	1,009	1,124
1968 as % of 1967	99		98		103		106		111	
1,000 head										
Hawaii	27	27	19	18	11	10	1	1	---	---

Hogs and Pigs: Number on farms, breeding, market, and total,
September 1, 1967 and 1968, selected States

State	Breeding			Market			Total		
	1968			1968			1968		
	1967	Number	As % of	1967	Number	As % of	1967	Number	As % of
	1,000	1,000	Percent	1,000	1,000	Percent	1,000	1,000	Percent
	head	head		head	head		head	head	
Ohio	340	347	102	2,380	2,319	97	2,720	2,666	98
Indiana	617	626	101	4,090	3,846	94	4,707	4,472	95
Illinois	1,038	1,027	99	6,375	6,312	99	7,413	7,339	99
Wisconsin	304	298	98	1,485	1,509	102	1,789	1,807	101
Minnesota	487	532	109	2,968	3,165	107	3,455	3,697	107
Iowa	2,008	2,162	108	13,436	13,282	99	15,444	15,444	100
Missouri	606	598	99	3,576	3,835	107	4,182	4,433	106
S. Dakota	258	293	114	1,806	1,874	104	2,064	2,167	105
Nebraska	422	482	114	2,706	2,959	109	3,128	3,441	110
Kansas	234	242	103	1,326	1,427	108	1,560	1,669	107
Total 10 States	6,314	6,607	105	40,148	40,528	101	46,462	47,135	101
Hawaii	10	10	100	58	56	97	68	66	97

Market Hogs and Pigs: Number on farms, by weight groups,
September 1, 1967 and 1968, selected States

State	Under 60 lbs.		60-119 lbs.		120-179 lbs.		180-219 lbs.		220 lbs. and over	
	1967	1968	1967	1968	1967	1968	1967	1968	1967	1968
	- - - 1,000 head - - -									
Ohio	964	951	571	533	535	522	274	278	36	35
Indiana	1,706	1,654	916	846	875	808	507	461	86	77
Illinois	2,180	2,317	1,690	1,559	1,517	1,528	854	757	134	151
Wisconsin	652	694	365	340	279	279	159	166	30	30
Minnesota	1,122	1,215	712	804	662	649	401	443	71	54
Iowa	4,272	4,516	3,614	3,586	3,413	3,188	1,774	1,660	363	332
Missouri	1,359	1,477	948	1,035	751	790	429	441	89	92
S. Dakota	470	497	533	525	556	562	207	253	40	37
Nebraska	747	858	760	799	766	799	379	429	54	74
Kansas	477	485	318	343	292	328	192	228	47	43
Total 10 States	13,949	14,664	10,427	10,370	9,646	9,453	5,176	5,116	950	925
1968 as % of 1967	105		99		98		99		97	
Hawaii	26	27	20	19	11	9	1	1	---	---

Farrowings: Number of sows, pigs per litter and pig crop, March-May 1967 and 1968, selected States

State	Sows farrowing				Pigs per litter		Pig crop 1/		
	Average	1968			litter		1968		
	1962-66	1967	Number	As % of 1967	1967	1968	1967	Number	As % of 1967
	1,000 head	1,000 head	1,000 head	Percent	Number	Number	1,000 head	1,000 head	Percent
Ohio.....	169	155	146	94	7.30	7.59	1,132	1,108	98
Indiana	251	235	226	96	7.69	7.53	1,807	1,702	94
Illinois ...	570	508	493	97	7.39	7.19	3,754	3,545	94
Wisconsin ..	163	149	149	100	7.38	7.74	1,100	1,153	105
Minnesota ..	304	268	273	102	7.60	7.58	2,037	2,069	102
Iowa	1,125	1,179	1,073	91	7.17	7.52	8,453	8,069	95
Missouri ...	283	293	293	100	7.63	7.40	2,236	2,168	97
S. Dakota ...	214	200	200	100	7.29	7.50	1,458	1,500	103
Nebraska ...	266	245	277	113	7.43	7.39	1,820	2,047	112
Kansas	96	98	104	106	7.62	7.76	747	807	108
Total 10 States	3,440	3,330	3,234	97	7.37	7.47	24,544	24,168	98
Hawaii	2.8	2.8	3.0	107	7.11	6.66	20	20	100

1/ Number of pigs farrowed March through May which are still on hand June 1 or have been sold.

Farrowings: Number of sows, pigs per litter and pig crop, June-August, 1967 and 1968, selected States

State	Sows farrowing				Pigs per litter		Pig crop 1/		
	Average	1968			litter		1968		
	1962-66	1967	Number	As % of 1967	1967	1968	1967	Number	As % of 1967
	1,000 head	1,000 head	1,000 head	Percent	Number	Number	1,000 head	1,000 head	Percent
Ohio	144	140	140	100	7.54	7.53	1,056	1,054	100
Indiana	293	254	259	102	7.54	7.21	1,915	1,867	97
Illinois ...	407	417	434	104	7.27	7.16	3,032	3,107	102
Wisconsin ..	116	102	102	100	7.55	7.86	770	802	104
Minnesota ..	189	178	190	107	7.50	7.56	1,335	1,436	108
Iowa	644	665	705	106	7.36	7.46	4,894	5,259	107
Missouri ...	225	235	244	104	7.20	7.27	1,692	1,774	105
South Dakota	60	64	68	106	7.20	7.23	461	492	107
Nebraska ...	120	122	139	114	7.40	7.54	903	1,048	116
Kansas	66	73	74	102	7.51	7.69	548	569	104
Total 10 States	2,264	2,250	2,355	105	7.38	7.39	16,606	17,408	105
Hawaii	2.8	2.9	3.0	103	7.24	7.40	21	22	105

1/ Number of pigs farrowed June through August which are still on hand September 1, or have been sold.

Farrowings: Number of sows, pigs per litter and pig crop,
September-November 1967 and 1968, selected States

State	Sows farrowing				Pigs per	Pig
	Average	1967	1968 1/		litter	crop
	1962-66	1967	Number	As % of	1967	1967
	1,000	1,000	1,000	Percent	Number	1,000
	head	head	head			head
Ohio	140	121	125	103	7.50	908
Indiana	199	184	188	102	7.58	1,395
Illinois	393	382	393	103	7.35	2,808
Wisconsin	109	104	111	107	7.64	795
Minnesota	160	147	151	103	7.52	1,105
Iowa	601	667	707	106	7.30	4,869
Missouri	231	268	271	101	7.41	1,986
South Dakota:	71	88	89	101	7.23	636
Nebraska	154	164	180	110	7.44	1,220
Kansas	70	86	91	106	7.56	650
Total 10 States	2,128	2,211	2,306	104	7.40	16,372
Hawaii	2.7	2.8	3.0	107	6.79	19.0

1/ Number indicated by breeding intentions report.

Farrowings: Number of sows, pigs per litter and pig crop,
December 1/-February 1968 and 1969, selected States

State	Sows farrowing				Pigs per	Pig
	Average	1968	1969 2/		litter	crop
	1962-66	1968	Number	As % of	1968	1968
	1,000	1,000	1,000	Percent	Number	1,000
	head	head	head			head
Ohio	114	115	108	94	7.10	816
Indiana	252	215	206	96	7.26	1,561
Illinois	311	292	310	106	7.05	2,059
Wisconsin	86	80	84	105	7.79	623
Minnesota	141	136	131	96	7.78	1,058
Iowa	443	471	518	110	7.25	3,415
Missouri	172	190	190	100	7.08	1,345
South Dakota:	44	55	57	104	7.60	418
Nebraska	96	119	127	107	7.45	887
Kansas	63	74	84	114	7.26	537
Total 10 States	1,722	1,747	1,815	104	7.28	12,719
Hawaii	2.7	3.0	3.0	100	6.65	20

1/ December preceding year.

2/ Number indicated by breeding intentions report.

U. S. DEPARTMENT OF AGRICULTURE
 Statistical Reporting Service
 Washington, D.C. 20250

POSTAGE AND FEES PAID
 U.S. DEPARTMENT OF AGRICULTURE

OFFICIAL BUSINESS

NOTICE

If you no longer need this publication,
 check here and return this sheet.

If your address should be changed,
 please return a copy of the old address
 with the new address to:

Secretary, Crop Reporting Board
 Statistical Reporting Service
 U.S. Department of Agriculture
 Washington, D. C. 20250

Hogs and Pigs: Number on farms, pig crop, inshipments, death loss and marketings,
 by quarters, June 1-September 1, 1967 and 1968, 10 States

Item	1967	1968
	- - - <u>1,000 head</u> - - -	
Hogs and Pigs on hand June 1	45,801	45,872
Pig Crop June-Aug.	16,606	17,408
Inshipments ^{1/} June-Aug.	270	292
Slaughter ^{2/} June-Aug.	15,145	15,394
Death Loss June-Aug.	1,070	1,043
Hogs and Pigs on hand Sept. 1	46,462	47,135

^{1/} Includes only those shipped in from States outside the 10 States.

^{2/} Includes farm slaughter, and feeder pig outshipments to States other than the 10 States.