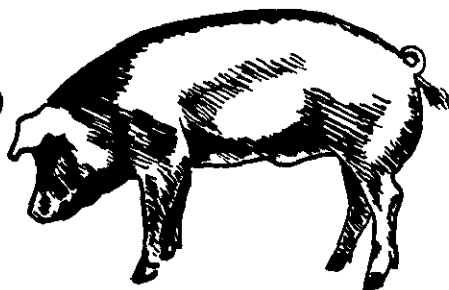


HOGS AND PIGS

DECEMBER 1968 (U. S. and 10 Corn Belt States)

In this issue:

- ★ December 1 Inventory
- ★ Sows Farrowing
- ★ Pig Crop



Release:
December 23, 1968
12:00 Noon (E.S.T.)

Hogs and pigs on farms in the United States on December 1, 1968 are estimated at 61.0 million head according to the Crop Reporting Board. This is an increase of 4 percent from a year earlier. Hogs kept for breeding are estimated at 9.6 million and market hogs at 51.5 million -- each up 4 percent from a year earlier.

The June-November 1968 pig crop is estimated at 45.3 million head, 4 percent above the same period in 1967. A total of 6.2 million sows farrowed in this period, 4 percent more than a year earlier.

The December 1967-May 1968 pig crop is estimated at 49.2 million, up 2 percent from a year earlier. The total pig crop for 1968 (December 1967 through November 1968) is estimated at 94.5 million, up 3 percent from 1967.

Hog producers reported intentions to farrow 7.0 million sows during the December 1968-May 1969 period. This is 5 percent more than farrowed during this period a year earlier. If these farrowing intentions are realized and pigs per litter equal the average with an allowance for trend, the pig crop for this period will be 51.7 million head, 5 percent more than last year.

New Release Time:

Beginning January 1, 1969, all livestock reports will be released at 3:00 P.M., E.T., instead of 12:00 Noon E.T., as in the past.

UNITED STATES DEPARTMENT OF AGRICULTURE

Statistical Reporting Service
MtAn 4 (12-68)

Crop Reporting Board
Washington, D. C. 20250

HOGS AND PIGS ON FARMS DECEMBER 1, 1968

The number of hogs and pigs on farms December 1 is an estimated 61,025,000 head--up 4 percent from a year earlier. Breeding hogs totaled 9,570,000, an increase of 4 percent from 1967. Hogs and pigs for market totaled 51,455,000, also up 4 percent from a year earlier.

By weight group classification, the number of market hogs and pigs on hand December 1, 1968 and the percentage change from the previous year are: less than 60 pounds, 18,517,000 head, up 3 percent; 60-119 pounds, 13,976,000 head, up 4 percent; 120-179 pounds, 10,576,000 head, up 7 percent; and 180 pounds and heavier, 8,386,000 head up 1 percent.

Hog numbers increased last year in all areas except the South Central States, where they declined 2 percent. The North Atlantic and Western Corn Belt States show the largest increases--6 percent. The Eastern Corn Belt States increased 2 percent, and South Atlantic and Western States each increased 3 percent.

In the 10 Corn Belt States--Ohio, Indiana, Illinois, Wisconsin, Minnesota, Iowa, Missouri, South Dakota, Nebraska and Kansas--the December 1 number of hogs and pigs was an estimated 47,150,000 head, up 5 percent from a year earlier. These 10 States accounted for 77 percent of the Nation's total hog and pig inventory. Iowa, which accounts for about one-fourth of the Nation's hog inventory, had 5 percent more hogs than a year earlier.

Market hogs and pigs in the 10 States totaled 39,747,000, up 5 percent from a year earlier. Breeding hogs in the 10 States totaled 7,403,000, up 5 percent from December 1, 1967.

JUNE-NOVEMBER PIG CROP UP 4 PERCENT

The June-November 1968 pig crop is an estimated 45,270,000 head, an increase of 4 percent from a year earlier. The Western Corn Belt States led all regions with a 7 percent increase, followed by the North Atlantic at 6 percent; South Atlantic and West, 4 percent; and Eastern Corn Belt, 1 percent. A decline of 2 percent occurred in the South Central States.

(Continued on page 20)

CROP REPORTING BOARD:

G. D. Simpson, Chairman,
M. L. Koehn, Secretary,
B. W. Kelly, E. B. Hannawald
K. D. Ackers, D. M. Bay,
P. F. Bascom, L. M. Cain,
H. L. Carter, A. R. Feistner,
B. F. Guinn, G. F. Hart,
A. J. Hintzman, M. H. Hammer,
D. N. Taylor, G. W. Suter,
W. H. Walther.

APPROVED:

J. G. Baker

ACTING SECRETARY OF AGRICULTURE

Hogs and Pigs: Number on farms, sows farrowing and pig crop,
United States, average and 1967-69

Item	Average	1967	1968	1969	1968 as	1969 as
	1962-66				percent	percent
	1,000	1,000	1,000	1,000	Percent	Percent
	head	head	head	head	of 1967	of 1968
<u>Number on farms-December 1:</u>						
All hogs and pigs	57,707	58,777	61,025	---	104	---
Kept for breeding	---	9,181	9,570	---	104	---
Market	---	49,596	51,455	---	104	---
<u>Market hogs and pigs</u>						
<u>by weight groups:</u>						
Under 60 pounds	---	18,013	18,517	---	103	---
60-119 pounds	---	13,398	13,976	---	104	---
120-179 pounds	---	9,853	10,576	---	107	---
180-219 pounds	---	6,232	6,311	---	101	---
220 pounds and over	---	2,100	2,075	---	99	---
<u>Sows farrowing:</u>						
December 1/-February	---	2,450	2,549	---	104	---
March-May	---	4,120	4,131	---	100	---
December 1/-May	6,556	6,570	6,680	2/6,981	102	105
June-August	---	2,974	3,162	---	106	---
September-November	---	2,925	2,994	---	102	---
June-November	5,685	5,899	6,156	---	104	---
<u>Pig crop:</u>						
December 1/-May	47,183	48,205	49,226	3/51,700	102	105
June-November	41,160	43,540	45,270	---	104	---
Year	88,342	91,745	94,496	---	103	---
<u>Pigs per litter:</u>						
December 1/-May	7.20	7.34	7.37	3/7.40	100	100
June-November	7.24	7.38	7.35	---	100	---

1/ December preceding year.

2/ Number indicated by breeding intention reports.

3/ Average number of pigs per litter with allowance for trend used to compute indicated December-May pig crop.

Hogs and Pigs: Number on farms, sows farrowing and pig crop
10 States, average and 1967-69

Item	Average	1967	1968	1969	1968 as	1969 as
	1962-66	1967	1968	1969	percent	percent
	1,000	1,000	1,000	1,000	of 1967:	of 1968
	head	head	head	head	Percent	
<u>Number on Farms-</u>						
<u>December 1:</u>						
All Hogs and pigs	44,743	44,997	47,150	---	105	---
Kept for breeding	---	7,057	7,403	---	105	---
Market	---	37,940	39,747	---	105	---
<u>Market hogs and pigs</u>						
<u>by weight groups</u>						
Under 60 pounds	---	13,388	13,973	---	104	---
50-119 pounds	---	10,262	10,865	---	106	---
120-179 pounds	---	7,704	8,294	---	108	---
180-219 pounds	---	5,067	5,101	---	101	---
220 pounds and over	---	1,519	1,514	---	100	---
<u>Sows farrowing</u>						
December 1/-February	1,722	1,745	1,789	2/1,862	103	104
March-May	3,440	3,330	3,358	2/3,568	101	106
June-August	2,264	2,258	2,387	---	106	---
September-November	2,128	2,234	2,337	---	105	---
<u>Pig Crop</u>						
December 1/-February	12,310	12,770	13,024	---	102	---
March-May	24,951	24,544	25,138	---	102	---
June-August	16,344	16,666	17,648	---	106	---
September-November	15,489	16,542	17,214	---	104	---
<u>Pigs per litter</u>						
December-1/February	7.16	7.32	7.28	---	99	---
March-May	7.25	7.37	7.49	---	102	---
June-August	7.22	7.38	7.39	---	100	---
September-November	7.28	7.40	7.37	---	100	---

1/ December preceding year.

2/ Number indicated by breeding intention reports.

Hogs and Pigs: On farm, pig crop, inshipments, death loss and marketings,
by quarters, Dec. 1, 1966-68, 10 States 1/

Item	1966	1967
	----- <u>1,000 head</u> -----	
Hogs and Pigs on hand Dec. 1	44,055	44,997
	-----	-----
	1967	1968
Pig crop Dec. <u>2/</u> - Feb.	12,770	13,024
Inshipments <u>3/</u> Dec. <u>2/</u> - Feb.	189	232
Slaughter <u>4/</u> Dec. <u>2/</u> - Feb.	17,162	17,413
Death Loss Dec. <u>2/</u> - Feb.	997	1,054
Hogs and Pigs on hand Mar. 1	38,855	39,786
Pig Crop Mar. - May	24,544	25,138
Inshipments <u>3/</u> Mar. - May	254	308
Slaughter <u>4/</u> Mar. - May	16,724	17,413
Death Loss Mar. - May	1,128	1,102
Hogs and Pigs on hand June 1	45,801	46,717
Pig Crop June - August	16,666	17,648
Inshipments <u>3/</u> June - August	270	291
Slaughter <u>4/</u> June - August	14,911	15,158
Death Loss June - August	1,057	1,038
Hogs and Pigs on hand Sept. 1	46,769	48,460
Pig Crop September - November	16,542	17,214
Inshipments <u>3/</u> September - November	247	317
Slaughter <u>4/</u> September - November	17,603	17,951
Death Loss September - November	958	890
Hogs and Pigs on hand Dec. 1	44,997	47,150

1/ See page 14 for States included.

2/ December preceding year.

3/ Includes only those shipped in from States outside the 10 States.

4/ Includes farm slaughter, and feeder pig outshipments to States other than the 10 States.

Hogs and Pigs: Number on farms, breeding, market and total,
December 1, 1967 and 1968

State	Breeding			Market			Total		
	1968			1968			1968		
	1967	Number	As % of	1967	Number	As % of	1967	Number	As % of
	1,000	1,000	Percent	1,000	1,000	Percent	1,000	1,000	Percent
	head	head	Percent	head	head	Percent	head	head	Percent
Maine ...	2	2	100	9	9	100	11	11	100
N. H. ...	2	2	100	13	13	100	15	15	100
Vt.	1.2	1.0	83	6.5	5.9	91	7.7	6.9	90
Mass.	12	12	100	85	83	98	97	95	98
R. I.	1.0	1.2	120	8.0	8.1	101	9.0	9.3	103
Conn.	2	2	100	10	10	100	12	12	100
N. Y.	17	15	88	82	84	102	99	99	100
N. J.	12	12	100	109	115	106	121	127	105
Pa.	67	71	106	430	476	111	497	547	110
Ohio	345	362	105	2,212	2,221	100	2,557	2,583	101
Ind.	638	621	97	3,730	3,878	104	4,368	4,499	103
Ill.	1,117	1,188	106	6,090	6,235	102	7,207	7,423	103
Mich.	94	91	97	512	515	101	606	606	100
Wis.	336	318	95	1,432	1,450	101	1,768	1,768	100
Minn.	522	564	108	2,622	2,894	110	3,144	3,458	110
Iowa	2,340	2,536	108	12,757	13,316	104	15,097	15,852	105
Mo.	686	707	103	3,743	3,855	103	4,429	4,562	103
N. Dak. ..	62	61	98	266	260	98	328	321	98
S. Dak. ..	334	335	100	1,472	1,525	104	1,806	1,860	103
Nebr.	487	507	104	2,556	2,871	112	3,043	3,378	111
Kans.	252	265	105	1,326	1,502	113	1,578	1,767	112
Del.	6	6	100	30	34	113	36	40	111
Md.	27	30	111	156	168	108	183	198	108
Va.	81	83	102	514	530	103	595	613	103
W. Va. ..	11	9	82	71	67	94	82	76	93
N. C.	236	235	100	1,238	1,283	104	1,474	1,518	103
S. C.	69	74	107	393	397	101	462	471	102
Ga.	233	239	103	1,367	1,409	103	1,600	1,648	103
Fla.	53	59	111	269	289	107	322	348	108
Ky.	221	229	104	1,254	1,202	96	1,475	1,431	97
Tenn.	182	180	99	924	849	92	1,106	1,029	93
Ala.	144	149	103	818	842	103	962	991	103
Miss.	84	81	96	460	441	96	544	522	96
Ark.	52	56	108	239	235	98	291	291	100
La.	46	45	98	186	171	92	232	216	93
Okla.	66	67	102	372	353	95	438	420	96
Texas	162	173	107	848	847	100	1,010	1,020	101
Mont.	30	30	100	140	147	105	170	177	104
Idaho	18	18	100	102	108	106	120	126	105
Wyo.	4	4	100	21	24	114	25	28	112
Colo.	33	35	106	183	205	112	216	240	111
N. Mex. ..	8	9	112	34	39	115	42	48	114
Ariz.	7	8	114	41	45	110	48	53	110
Utah	9	9	100	44	47	107	53	56	105
Nev.	1.2	1.3	108	8.6	9.7	113	9.8	11.0	112
Wash.	12	14	117	85	73	86	97	87	90
Oreg.	18	17	94	102	103	101	120	120	100
Calif.	28	27	96	167	154	92	195	181	93
48 Sts. ..	9,171	9,560	104	49,537	51,398	104	58,708	60,958	104
Alaska ..	.2	.3	150	1.0	.8	80	1.2	1.1	92
Hawaii ...	10	10	100	58	56	97	68	66	97
U. S.	9,181	9,570	104	49,596	51,452	104	58,777	61,025	104

Market hogs and pigs: Number on farms by weight groups, December 1, 1967 and 1968										
State	Under		60-119		120-179		180-219		220 lbs.	
	60 lbs.		lbs.		lbs.		lbs.		and over	
	1967	1968	1967	1968	1967	1968	1967	1968	1967	1968
1,000 head										
Maine	3	3	3	2	1	2	1	1	1	1
N. H.	4	4	4	4	2	2	2	2	1	1
Vt.	1.9	2.0	1.8	1.3	1.3	1.1	.9	.8	.6	.7
Mass.	31	15	21	32	18	15	10	14	5	7
R. I.	2.8	3.5	2.0	2.1	1.5	1.1	1.2	.8	.5	.6
Conn.	3	3.5	3	2.7	2	1.9	2	1.5	---	.4
N. Y.	32	33	19	18	16	17	10	9	5	7
N. J.	22	29	32	37	28	24	17	15	10	10
Pa.	163	186	112	119	77	90	52	52	26	29
Ohio	867	866	664	666	409	422	232	222	40	45
Ind.	1,194	1,210	1,100	1,140	858	1,008	477	434	101	86
Ill.	2,058	2,151	1,772	1,808	1,267	1,278	810	811	183	187
Mich.	179	175	149	124	97	119	72	82	15	15
Wis.	587	551	301	377	308	305	193	181	43	36
Minn.	933	984	787	894	498	564	325	356	79	96
Iowa	4,210	4,461	3,342	3,462	2,615	2,863	1,952	1,931	638	599
Mo.	1,497	1,465	898	1,041	749	752	412	424	187	173
N. Dak.	76	78	60	57	64	60	53	52	13	13
S. Dak.	530	549	353	374	280	290	221	221	88	91
Nebr.	982	1,120	700	735	468	519	299	356	107	141
Kans.	530	616	345	368	252	293	146	165	53	60
Del.	13	14	8	9	5	6	3	4	1	1
Md.	62	66	44	47	26	29	16	17	8	9
Va.	195	205	139	134	84	89	49	49	47	53
W. Va.	32	29	13	12	10	10	6	7	10	9
N. C.	541	545	331	333	179	224	93	105	94	76
S. C.	163	160	116	115	74	77	24	28	16	17
Ge.	560	578	383	408	287	296	96	99	41	28
Fla.	105	118	83	87	48	51	27	27	6	6
Ky.	508	469	327	307	252	240	127	144	40	42
Tenn.	398	346	228	186	127	155	90	81	81	81
Ala.	327	312	229	261	164	168	65	67	33	34
Miss.	184	185	110	93	92	88	60	53	14	22
Ark.	107	102	57	52	36	40	24	31	15	10
La.	90	76	50	51	24	29	13	10	9	5
Okla.	153	145	98	98	70	69	42	33	9	8
Texas	287	280	266	254	164	169	89	102	42	42
Mont.	53	52	32	34	27	35	21	21	7	5
Idaho	39	43	25	29	21	23	12	11	5	2
Wyo.	9	9	5	8	4	3	2	3	1	1
Colo.	73	73	37	49	37	47	28	29	8	7
N. Mex.	14	17	10	10	5	6	3	4	2	2
Ariz.	12	17	11	9	8	9	6	9	4	1
Utah	17	20	11	13	9	9	6	4	1	1
Nev.	4.3	3.6	1.8	2.7	1.6	2.2	.8	1.0	.1	.2
Wash.	29	25	24	22	14	15	15	9	3	2
Oreg.	45	31	26	31	20	25	10	13	1	3
Calif.	58	65	46	39	42	25	15	17	6	8
48 States	17,984	18,491	13,380	13,958	9,842	10,566	6,231	6,309	2,100	2,074
Alaska	.50	.30	.20	.20	.20	.20	1.10	.10	---	---
Hawaii	28	25	18	18	11	10	2	2	---	1
U. S.	18,013	18,517	13,398	13,976	9,853	10,576	6,232	6,311	2,100	2,075

1/ Includes hogs and pigs 220 lbs. and over.

Hogs and Pigs: Number on farms, breeding, market and total, June 1, 1967 and 1968									
State	Breeding			Market			Total		
	1968			1968			1968		
	1967	Number	As % of 1967	Number	As % of 1967	1967	Number	As % of 1967	
	1,000	1,000	1,000	1,000	1,000	1,000	1,000	Pct.	
	head	head	Pct.	head	head	Pct.	head	head	Pct.
Maine	2	2	100	9	8	89	11	10	91
N. H.	2	2	100	12	11	85	14	13	93
Vt.	1.3	.9	69	5.8	5.2	90	7.1	6.1	86
Mass.	11	12	109	90	82	91	101	94	93
R. I.	1.0	1.1	110	7.6	8.2	108	8.6	9.3	108
Conn.	1	1	100	12	11	92	13	12	92
N. Y.	21	20	95	77	90	117	98	110	112
N. J.	12	12	100	111	117	105	123	129	105
Pa.	69	68	99	423	419	99	492	487	99
Ohio	366	382	104	2,158	2,167	100	2,524	2,549	101
Ind.	660	647	98	3,652	3,665	100	4,312	4,312	100
Ill.	1,077	1,109	103	6,101	5,997	98	7,178	7,106	103
Mich.	109	103	95	495	501	101	604	604	100
Wis.	309	313	101	1,410	1,475	105	1,719	1,788	104
Minn.	514	553	108	2,915	3,082	106	3,429	3,635	106
Iowa	2,192	2,223	101	13,140	13,109	100	15,332	15,332	100
Mo.	626	668	107	3,545	3,670	104	4,171	4,338	104
N. Dak.	65	60	92	366	337	92	431	397	92
S. Dak.	329	333	101	1,795	1,961	109	2,124	2,294	108
Nebr.	474	526	111	2,915	3,100	106	3,389	3,626	107
Kans.	227	243	107	1,396	1,494	107	1,623	1,737	107
Del.	6	6	100	30	29	97	36	35	97
Md.	32	27	84	142	133	94	174	160	92
Va.	93	91	98	464	477	103	557	568	102
W. Va.	12	12	100	71	71	100	83	83	100
N. C.	279	329	118	1,466	1,521	104	1,745	1,850	106
S. C.	80	76	95	392	396	101	472	472	100
Ga.	234	225	96	1,327	1,383	104	1,561	1,608	103
Fla.	52	56	108	275	255	93	327	311	95
Ky.	213	230	108	1,119	1,209	108	1,332	1,439	108
Tenn.	218	218	100	820	820	100	1,038	1,038	100
Ala.	143	151	106	813	853	105	956	1,004	105
Miss.	84	82	98	438	466	106	522	548	105
Ark.	46	48	104	186	221	119	232	269	116
La.	49	44	90	174	175	101	223	219	98
Okla.	53	61	115	303	323	107	356	384	108
Texas	142	150	106	743	735	99	885	885	100
Mont.	28	27	96	158	150	95	186	177	95
Idaho	18	19	106	93	98	105	111	117	105
Wyo.	6	5	83	23	25	109	29	30	103
Colo.	32	29	91	183	191	104	215	220	102
N. Mex.	7	10	143	35	40	114	42	50	119
Ariz.	7	8	114	34	46	135	41	54	132
Utah	10	10	100	38	41	108	48	51	106
Nev.	1.3	1.4	108	8.2	8.6	105	9.5	10.0	105
Wash.	13	14	108	72	71	99	85	85	100
Oreg.	18	15	83	108	103	95	126	118	94
Calif.	33	27	82	175	148	85	208	175	84
48 States	8,978	9,250	103	50,325	51,298	102	59,303	60,548	102
Alaska	.2	.3	150	.8	.9	112	1.0	1.2	120
Hawaii	10	10	100	58	56	97	68	66	97
U. S.	8,988	9,260	103	50,384	51,355	102	59,372	60,615	102

Market hogs and pigs: Number on farms, by weight groups, June 1, 1967 and 1968

State	Under 60 lbs.		60-119 lbs.		120-179 lbs.		180-219 lbs.		220 lbs. and over	
	1967	1968	1967	1968	1967	1968	1967	1968	1967	1968
	1,000 head									
Maine	4	4	2	2	1	1	1	1	1	---
N. H.	6	5	2	2	2	2	1	1	1	1
Vt.	3.2	2.5	1.0	1.0	.8	.9	.4	.5	.4	.3
Mass.	34	33	22	20	17	13	10	11	7	5
R. I.	2.7	3.0	2.6	2.5	1.3	1.4	.5	.7	.5	.6
Conn.	4	3	3	3	3	3	2	2	---	---
N. Y.	40	37	13	22	13	19	8	8	3	4
N. J.	32	32	25	26	28	26	18	22	8	11
Pa.	192	180	97	105	74	80	47	42	13	12
Ohio	993	949	583	598	388	412	162	176	32	32
Ind.	1,643	1,576	986	935	639	751	311	330	73	73
Ill.	2,989	2,879	1,556	1,439	946	1,019	458	492	152	168
Mich.	247	253	119	112	69	78	50	47	10	11
Wis.	900	914	258	270	145	170	77	90	30	31
Minn.	1,662	1,710	641	678	350	370	189	247	73	77
Iowa	7,030	7,053	2,956	2,884	1,774	1,704	986	1,009	394	459
Mo.	1,843	1,908	745	734	532	569	319	330	106	129
N. Dak.	263	242	55	51	26	24	11	10	11	10
S. Dak.	1,256	1,284	278	353	144	167	79	98	38	59
Nebr.	1,662	1,736	612	666	364	388	204	232	73	78
Kans.	621	672	363	389	230	239	144	157	38	37
Del.	14	12	7	7	6	6	2	3	1	1
Md.	78	65	32	31	19	21	10	12	3	4
Va.	213	215	124	129	85	81	30	38	12	14
W. Va.	39	38	14	14	10	11	5	5	3	3
N. C.	660	671	410	394	264	281	103	137	29	38
S. C.	176	170	96	95	75	79	33	36	12	16
Ga.	637	595	372	387	226	276	66	97	26	28
Fla.	121	107	74	71	42	38	28	26	10	13
Ky.	548	568	269	302	179	194	101	121	22	24
Tenn.	418	361	197	221	131	148	58	74	16	16
Ala.	393	401	211	213	130	145	57	68	22	26
Miss.	215	210	114	130	61	70	35	42	13	14
Ark.	102	122	43	46	26	32	11	15	4	6
La.	103	100	47	49	17	14	5	7	2	5
Okla.	121	133	94	90	56	61	26	33	6	6
Texas	312	316	210	206	136	125	69	73	16	15
Mont.	87	68	34	36	22	21	9	15	6	10
Idaho	42	47	27	24	14	17	8	9	2	1
Wyo.	15	15	4	5	2	3	2	1	---	1
Colo.	93	76	39	49	29	39	18	21	4	6
N. Mex.	15	18	12	11	4	7	2	3	2	1
Ariz.	13	18	9	11	6	9	4	6	2	2
Utah	24	25	4	5	3	4	5	5	2	2
Nev.	3.6	4.1	2.0	2.8	1.6	1.1	1.0	.5	---	.1
Wash.	30	30	21	19	11	13	8	7	2	2
Oreg.	39	42	31	25	24	24	12	10	2	2
Calif.	63	54	54	43	35	30	17	17	6	4
48										
States	26,001	25,957	11,870	11,908	7,362	7,787	3,803	4,188	1,289	1,458
Alaska	.4	.5	.2	.2	.1	.1	1/.1	.1	---	---
Hawaii	27	27	19	18	11	10	1	1	---	---
U. S.	26,029	25,985	11,889	11,926	7,373	7,797	3,804	4,189	1,289	1,458

1/ Includes hogs and pigs 220 lbs. and over.

Farrowings: Number of sows, pigs per litter and pig crop, December 1/-May, 1967-69

State	Sows farrowing				As % of: 1968	Pigs		Pig crop		
	Average:	1967	1968	1969		per	Average:	1967	1968	
	1962-66:	Number	Number	Number		Litter	1962-66:	1967	1968	
	1,000	1,000	1,000	1,000	Percent	No.	No.	1,000	1,000	1,000
	head	head	head	head				head	head	head
Maine	1.5	1.2	1.1	1.0	91	6.4	6.5	9.4	7.7	7.2
N. H.	1.2	1.3	1.2	1.1	92	7.2	7.0	8.7	9.4	8.4
Vt.	.9	.8	.7	.7	100	7.3	7.5	6.7	5.8	5.2
Mass.	9.2	8.9	8.2	8.2	100	6.3	5.8	57	56	48
R. I.	.7	.7	.7	.9	129	6.0	6.3	4.6	4.2	4.4
Conn.	1.5	1.3	1.2	1.2	100	6.4	5.9	9.3	8.3	7.1
N. Y.	9.4	9.5	10.0	10.0	100	7.6	7.6	70	72	76
N. J.	9.3	8.0	8.3	8.3	100	5.9	6.3	52	47	52
Pa.	50	53	53	54	102	7.7	7.7	369	408	408
Ohio	283	271	261	263	101	7.27	7.37	2,037	1,970	1,924
Ind.	503	454	454	459	101	7.46	7.40	3,654	3,386	3,360
Ill.	880	815	815	863	106	7.34	7.14	6,231	5,986	5,817
Mich.	73	63	65	68	105	7.54	7.42	544	475	482
Wis.	249	232	229	231	101	7.34	7.76	1,843	1,702	1,776
Minn.	445	404	420	454	108	7.50	7.65	3,270	3,069	3,212
Iowa	1,568	1,641	1,635	1,765	108	7.23	7.44	11,314	11,858	12,166
Mo.	456	479	489	507	104	7.44	7.36	3,279	3,564	3,599
N. Dak.	51	52	45	42	93	7.51	7.65	374	391	344
S. Dak.	258	250	264	269	102	7.32	7.52	1,849	1,830	1,986
Nebr.	362	361	402	421	105	7.43	7.41	2,617	2,684	2,978
Kans.	159	168	178	198	111	7.53	7.55	1,166	1,265	1,344
Del.	3.3	3.7	3.4	3.4	100	6.9	7.0	24	26	24
Md.	18	18	16	15	94	7.4	7.5	131	133	120
Va.	58	54	52	55	106	7.3	7.3	415	394	380
W. Va.	7.5	7.3	7.2	6.5	90	7.4	7.7	56	54	55
N. C.	146	200	212	212	100	7.6	7.5	1,085	1,520	1,590
S. C.	46	51	50	53	106	7.0	7.0	314	357	350
Ga.	157	176	181	185	102	7.1	7.1	1,101	1,250	1,285
Fla.	34	34	34	36	106	6.9	6.8	245	235	231
Ky.	147	155	167	160	96	7.3	7.3	1,057	1,132	1,219
Tenn.	129	125	135	130	96	7.4	7.0	902	925	945
Ala.	94	105	110	112	102	7.2	7.2	666	756	792
Miss.	49	55	58	58	100	6.8	6.3	324	374	365
Ark.	33	32	35	38	109	7.2	7.1	229	230	248
La.	20	25	24	23	96	6.5	6.5	124	162	156
Okla.	39	43	46	49	106	7.2	7.3	282	310	336
Texas	85	90	90	95	106	7.2	7.1	589	648	639
Mont.	18	19	18	18	100	7.7	7.8	131	146	140
Idaho	13	13	13	13	100	7.5	8.0	98	98	104
Wyo.	2.9	3.0	3.1	3.4	109	7.1	7.1	20	21	22
Colo.	22	25	25	28	112	7.0	7.2	155	175	180
N. Mex.	4.7	4.9	5.4	5.9	110	7.1	7.4	31	35	40
Ariz.	2.8	4.4	5.5	6.3	115	8.0	8.1	22	35	45
Utah	5.2	5.5	5.5	5.5	100	7.4	7.5	36	41	41
Nev.	1.0	1.0	1.2	1.2	100	6.3	6.4	6.6	6.3	7.7
Wash.	11	7.5	8.0	8.5	106	8.2	8.3	85	62	66
Oreg.	13	12	11	12	105	8.4	8.5	105	101	94
Calif.	22	20	16	17	106	7.0	6.6	144	139	106
48 States	6,551	6,564	6,674	6,272	105	7.34	7.37	47,143	48,164	49,185
Alaska	---	.14	.13	.17	131	5.7	6.0	---	.80	.78
Hawaii	5.5	5.7	6.0	6.0	100	7.02	6.67	40	40	40
U. S.	6,556	6,570	6,680	6,981	105	7.34	7.37	47,183	48,205	49,225

1/ December preceding year. 2/ Number indicated to farrow from breeding intention reports.

Farrowings: Number of sows, by quarters, December 1/-February and March-May 1967 and 1968

State	December - February			March - May		
	1967	1968	1968 as % of 1967	1967	1968	1968 as % of 1967
	1,000 head	1,000 head	Percent	1,000 head	1,000 head	Percent
Maine	.3	.3	100	.9	.8	89
N. H.	.2	.2	100	1.1	1.0	91
Vt.	.2	.2	100	.6	.5	83
Mass.	2.7	2.1	78	6.2	6.1	98
R. I.	.3	.3	100	.4	.4	100
Conn.	.4	.5	125	.9	.7	78
N. Y.	3.0	3.3	110	6.5	6.7	103
N. J.	2.7	3.4	126	5.3	4.9	92
Pa.	23	24	104	30	29	97
Ohio	116	115	99	155	146	94
Ind.	219	219	100	235	235	100
Ill.	307	307	100	508	508	100
Mich.	22	22	100	41	43	105
Wis.	83	80	96	149	149	100
Minn.	136	141	104	268	279	104
Iowa	462	480	104	1,179	1,155	98
Mo.	186	190	102	293	299	102
N. Dak.	9	9	100	43	36	84
S. Dak.	50	58	116	200	206	103
Nebr.	116	125	108	245	277	113
Kans.	70	74	106	98	104	106
Del.	1.6	1.5	94	2.1	1.9	90
Md.	9.0	7.7	86	9.0	8.3	92
Va.	29	27	93	25	25	100
W. Va.	2.4	2.4	100	4.9	4.8	98
N. C.	98	113	115	102	99	97
S. C.	26	27	104	25	23	92
Ga.	97	105	108	79	76	96
Fla.	18	17	94	16	17	106
Ky.	70	79	113	85	88	104
Tenn.	59	71	120	66	64	97
Ala.	56	60	107	49	50	102
Miss.	29	29	100	26	29	112
Ark.	15	19	127	17	16	94
La.	14	13	93	11	11	100
Okla.	21	23	110	22	23	105
Texas	42	47	112	48	43	90
Mont.	6.0	7	117	13	11	85
Idaho	6.0	5	83	7.0	8	114
Wyo.	.8	1.0	125	2.2	2.1	95
Colo.	10	11	110	15	14	93
N. Mex.	2.4	2.8	117	2.5	2.6	104
Ariz.	2.2	2.9	132	2.2	2.6	118
Utah	2.1	2.4	114	3.4	3.1	91
Nev.	.3	.4	133	.7	.8	114
Wash.	3.2	3.8	119	4.3	4.2	98
Oreg.	7.0	6	86	5.0	5	100
Calif.	11	8	73	9.0	8	89
48 States	2,447	2,546	104	4,117	4,128	100
Alaska	.04	.05	125	.10	.08	80
Hawaii	2.9	3.0	103	2.8	3.0	107
U. S.	2,450	2,549	104	4,120	4,131	100

1/ December preceding year.

Farrowings: Number of sows, pigs per litter and pig crop, June-November
1967 and 1968

State	Sows farrowing				Pigs per litter		Pig crop			
	Average	1968			Average	1968				
	1962-66	1967	Number	As % of 1967	1967	1968	1962-66	1967	Number	As % of 1967
	1,000 head	1,000 head	1,000 head	Percent	Number	Number	1,000 head	1,000 head	1,000 head	Percent
Maine	1.4	1.1	1.1	100	6.8	8.0	9.3	7.5	8.8	117
N. H.	1.3	1.4	1.5	107	7.4	6.8	9.7	10	10	102
Vt.	.9	.9	.9	100	7.1	7.5	6.9	6.4	6.8	106
Mass.	8.7	8.0	8.5	106	6.4	6.4	56	51	54	106
R. I.	.8	.7	.8	114	6.6	5.5	4.9	4.6	4.4	96
Conn.	1.5	1.2	1.2	100	6.3	6.4	9.3	7.6	7.7	101
N. Y.	9.1	9.1	10.0	110	7.9	7.4	71	72	74	103
N. J.	9.3	7.5	7.2	96	6.0	6.3	53	45	45	100
Pa.	44	45	50	111	7.8	7.5	341	351	375	107
Ohio	283	263	267	102	7.52	7.47	2,098	1,979	1,994	101
Ind.	492	438	450	103	7.56	7.36	3,609	3,310	3,314	100
Ill.	800	799	827	104	7.31	7.14	5,727	5,840	5,909	101
Mich.	84	75	70	93	7.52	7.40	623	564	518	92
Wis.	225	216	219	101	7.59	7.76	1,664	1,640	1,699	104
Minn.	349	325	349	107	7.51	7.44	2,553	2,440	2,597	106
Iowa	1,245	1,345	1,425	106	7.33	7.40	8,942	9,858	10,552	107
Mo.	456	503	525	104	7.31	7.25	3,304	3,678	3,805	103
N. Dak.	25	27	26	96	7.59	7.50	187	205	195	95
S. Dak.	132	152	159	105	7.22	7.45	940	1,097	1,185	108
Nebr.	274	292	331	113	7.42	7.52	1,991	2,168	2,490	115
Kans.	136	159	172	108	7.53	7.66	1,003	1,198	1,317	110
Del.	4.1	4.4	4.7	107	7.4	7.1	29	33	33	100
Md.	19	19	20	105	7.4	7.3	138	141	146	104
Va.	55	55	57	104	7.6	7.5	413	418	428	102
W. Va.	7.6	8.0	7.7	96	7.8	7.7	59	62	59	95
N. C.	120	145	151	104	7.6	7.5	884	1,102	1,132	103
S. C.	41	43	45	104	7.0	7.1	283	301	320	106
Ga.	141	152	161	106	7.2	7.2	997	1,094	1,159	106
Fla.	31	29	32	110	7.1	6.9	215	206	221	107
Ky.	139	155	152	98	7.5	7.3	1,023	1,162	1,110	96
Tenn.	119	124	124	100	7.4	7.2	867	918	893	97
Ala.	82	95	102	107	7.2	7.2	587	684	734	107
Miss.	46	53	50	94	6.9	7.0	307	366	350	96
Ark.	35	43	45	105	7.4	7.0	254	318	315	99
La.	20	22	19	86	6.4	6.4	126	141	122	87
Okla.	38	51	49	96	7.3	7.2	276	372	353	95
Texas	90	113	114	101	7.1	7.1	636	802	809	101
Mont.	17	17	18	108	7.5	7.9	129	128	142	111
Idaho	12	12	12	100	7.8	7.9	89	94	95	101
Wyo.	2.6	2.3	2.5	109	7.3	7.8	18	17	20	118
Colo.	22	25	29	116	7.5	7.3	158	187	212	113
N. Mex.	4.5	4.7	5.6	119	7.5	7.5	30	35	42	120
Ariz.	2.9	5.2	5.5	106	8.0	7.5	20	42	41	98
Utah	5.6	6.5	6.5	100	7.0	7.5	38	46	49	107
Nev.	.8	1.0	1.1	110	7.0	7.5	5.5	7.0	8.2	117
Wash.	11	8.0	7.4	92	7.7	8.4	89	62	62	100
Oreg.	14	13	12	92	8.3	8.5	109	108	102	94
Calif.	20	18	16	89	6.7	6.8	136	121	109	90
48 States	5,680	5,893	6,150	104	7.38	7.35	41,119	43,492	45,227	104
Alaska	---	.19	.15	79	5.8	6.1	---	1.1	.92	84
Hawaii	5.5	5.7	6.0	105	7.02	7.00	40	40	42	105
U. S.	5,685	5,899	6,156	104	7.38	7.35	41,160	43,540	45,270	104

Farrowings: Number of sows, by quarters, June-August and September-
November 1967 and 1968

State	June - August			September - November		
	1967	1968	1968 as % of 1967	1967	1968	1968 as % of 1967
	1,000 head	1,000 head	Percent	1,000 head	1,000 head	Percent
Maine	.7	.9	129	.4	.2	50
N. H.	.8	.9	112	.6	.6	100
Vt.	.4	.5	125	.5	.4	80
Mass.	4.1	5.7	139	3.9	2.8	72
R. I.	.4	.5	125	.3	.3	100
Conn.	.6	.5	83	.6	.7	117
N. Y.	4.1	5.0	122	5.0	5.0	100
N. J.	4.0	3.8	95	3.5	3.4	97
Pa.	21	24	114	24	26	108
Ohio	142	142	100	121	125	103
Ind.	254	262	103	184	188	102
Ill.	417	434	104	382	393	103
Mich.	43	41	95	32	29	91
Wis.	108	108	100	108	111	103
Minn.	178	190	107	147	159	108
Iowa	665	718	108	680	707	104
Mo.	235	249	106	268	276	103
N. Dak.	15	17	113	12	9	75
S. Dak.	64	68	106	88	91	103
Nebr.	122	139	114	170	192	113
Kans.	73	77	105	86	95	110
Del.	2.7	3.0	111	1.7	1.7	100
Md.	10	12	120	9	8	89
Va.	29	30	103	26	27	104
W. Va.	3.2	3.1	97	4.8	4.6	96
N. C.	76	80	105	69	71	103
S. C.	20	23	115	23	22	96
Ge.	79	84	106	73	77	105
Fla.	15	16	107	14	16	114
Ky.	82	88	107	73	64	88
Tenn.	60	66	110	64	58	91
Ala.	48	59	123	47	43	91
Miss.	29	30	103	24	20	83
Ark.	24	24	100	19	21	111
La.	12	11	92	10	8	80
Okla.	23	23	100	28	26	93
Texas	49	62	127	64	52	81
Mont.	8	10	125	9	8	89
Idaho	6	6	100	6	6	100
Wyo.	1.2	1.2	100	1.1	1.3	118
Colo.	13	13	100	12	16	133
N. Mex.	2.0	2.9	145	2.7	2.7	100
Ariz.	2.4	3.0	125	2.8	2.5	89
Utah	2.6	3.7	142	3.9	2.8	72
Nev.	.5	.6	120	.5	.5	100
Wash.	4.2	3.0	71	3.8	4.4	116
Oreg.	8.0	7.0	88	5.0	5.0	100
Calif.	9.0	8.0	89	9.0	8.0	89
48 States	2,971	3,159	106	2,922	2,991	102
Alaska	.12	.09	75	.07	.06	86
Hawaii	2.9	3.0	103	2.8	3.0	107
U. S.	2,974	3,162	106	2,925	2,994	102

Hogs and Pigs: Number on farms, breeding, market and total, March 1, 1967 and 1968, selected States

State	Breeding			Market			Total		
	1968			1968			1968		
	1967	Number	As % of 1967	1967	Number	As % of 1967	1967	Number	As % of 1967
	1,000 head	1,000 head	Percent	1,000 head	1,000 head	Percent	1,000 head	1,000 head	Percent
Ohio	362	363	100	2,054	1,981	96	2,426	2,344	97
Indiana	688	662	96	3,531	3,473	98	4,219	4,135	98
Illinois ...	1,128	1,105	98	5,246	5,396	103	6,374	6,501	102
Wisconsin :	343	332	97	1,100	1,111	101	1,443	1,443	100
Minnesota :	530	524	99	2,229	2,263	102	2,759	2,787	101
Iowa	2,429	2,414	99	10,029	10,293	103	12,458	12,707	102
Missouri ...	657	703	107	2,993	3,203	107	3,650	3,906	107
S. Dakota :	367	356	97	968	1,126	116	1,335	1,482	111
Nebraska ...	524	561	107	2,234	2,390	107	2,758	2,951	107
Kansas	245	245	100	1,198	1,285	107	1,443	1,530	106
Total 10 ...									
States	7,273	7,265	100	31,582	32,521	103	38,855	39,786	102
Hawaii	10	10	100	58	57	98	68	67	99

Market Hogs and Pigs: Number on farms, by weight groups, March 1, 1967 and 1968, selected States

State	Under 60 lbs.		60-119 lbs.		120-179 lbs.		180-219 lbs.		220 lbs. and over			
	1967		1968		1967		1968		1967		1968	
	1967	1968	1967	1968	1967	1968	1967	1968	1967	1968		
	1,000 head											
Ohio	791	772	452	446	513	475	257	248	41	40		
Indiana	1,483	1,406	777	785	741	747	459	462	71	73		
Illinois ...	1,951	1,851	1,081	1,187	1,322	1,408	745	810	147	140		
Wisconsin :	462	475	211	219	250	239	154	156	23	22		
Minnesota :	914	928	381	430	490	475	368	362	76	68		
Iowa	3,310	3,531	2,166	2,131	2,668	2,779	1,534	1,492	351	360		
Missouri ...	1,122	1,217	718	769	689	736	344	359	120	122		
S. Dakota :	344	417	203	231	232	281	150	158	39	39		
Nebraska ...	815	860	503	549	550	598	310	323	56	60		
Kansas	455	488	270	283	284	302	158	180	31	32		
Total 10 ...												
States	11,647	11,945	6,762	7,030	7,739	8,040	4,479	4,550	955	956		
	1,000 head											
Hawaii	28	27	18	18	11	11	1	1	---	---		

Hogs and Pigs: Number on farms, breeding, market,
and total, June 1, 1967 and 1968, selected States

State	Breeding			Market			Total		
	1968		As % of 1967	1968		As % of 1967	1968		As % of 1967
	1967	Number		1967	Number		1967	Number	
	1,000 head	1,000 head	Percent	1,000 head	1,000 head	Percent	1,000 head	1,000 head	Percent
Ohio	366	382	104	2,158	2,167	100	2,524	2,549	101
Indiana...	660	647	98	3,652	3,665	100	4,312	4,312	100
Illinois :	1,077	1,109	103	6,101	5,997	98	7,178	7,106	99
Wisconsin:	309	313	101	1,410	1,475	105	1,719	1,788	104
Minnesota:	514	553	108	2,915	3,082	106	3,429	3,635	106
Iowa	2,192	2,223	101	13,140	13,109	100	15,332	15,332	100
Missouri :	626	668	107	3,545	3,670	104	4,171	4,338	104
S. Dakota :	329	333	101	1,795	1,961	109	2,124	2,294	108
Nebraska :	474	526	111	2,915	3,100	106	3,389	3,626	107
Kansas...	227	243	107	1,396	1,494	107	1,623	1,737	107
Total 10 States	6,774	6,997	103	39,027	39,720	102	45,801	46,717	102
Hawaii ..	10	10	100	58	56	97	68	66	97

Market Hogs and Pigs: Number on farms, by weight groups,
June 1, 1967 and 1968, selected States

State	Under	60-119		120-179		180-219		220 lbs. and over		
	60 lbs.	lbs.		lbs.		lbs.		and over		
	1967	1968	1967	1968	1967	1968	1967	1968	1967	1968
	1,000 head	1,000 head	1,000 head	1,000 head	1,000 head	1,000 head	1,000 head	1,000 head	1,000 head	1,000 head
Ohio	993	949	583	598	388	412	162	176	32	32
Indiana...	1,643	1,576	986	935	639	751	311	330	73	73
Illinois :	2,989	2,879	1,556	1,439	946	1,019	458	492	152	168
Wisconsin :	900	914	258	270	145	170	77	90	30	31
Minnesota :	1,662	1,710	641	678	350	370	189	247	73	77
Iowa	7,030	7,053	2,956	2,884	1,774	1,704	986	1,009	394	459
Missouri..	1,843	1,908	745	734	532	569	319	330	106	129
S. Dakota :	1,256	1,284	278	353	144	167	79	98	38	59
Nebraska..	1,662	1,736	612	666	364	388	204	232	73	78
Kansas ...	621	672	363	389	230	239	144	157	38	37
Total 10 States	20,599	20,681	8,978	8,946	5,512	5,789	2,929	3,161	1,009	1,143
Hawaii ...	27	27	19	18	11	10	1	1	---	---

Hogs and Pigs: Number on farms, breeding, market and total,
September 1, 1967 and 1968, selected States

State	Breeding			Market			Total		
	1968		AS % of 1967	1968		AS % of 1967	1968		AS % of 1967
	1967	Number		1967	Number		1967	Number	
	head	head	Percent	head	head	Percent	head	head	Percent
Ohio	343	353	103	2,403	2,365	98	2,746	2,718	99
Indiana ...	617	646	105	4,090	3,967	97	4,707	4,613	98
Illinois ..	1,048	1,059	101	6,440	6,504	101	7,488	7,563	101
Wisconsin ..	314	314	100	1,531	1,586	104	1,845	1,900	103
Minnesota ..	492	538	109	2,998	3,196	107	3,490	3,734	107
Iowa	2,008	2,168	108	13,436	13,894	103	15,444	16,062	104
Missouri ..	606	610	101	3,576	3,907	109	4,182	4,517	108
S. Dak. ...	261	285	109	1,824	1,904	104	2,085	2,189	105
Nebraska ..	447	483	108	2,745	2,964	108	3,192	3,447	108
Kansas	238	249	105	1,352	1,468	109	1,590	1,717	108
Total 10 States	6,374	6,705	105	40,395	41,755	103	46,769	48,460	104
Hawaii	10	10	100	58	56	97	68	66	97

Market Hogs and Pigs: Number on farms, by weight groups,
September 1, 1967 and 1968, selected States

State	Under 60 lbs.		60-119 lbs.		120-179 lbs.		180-219 lbs.		220 lbs. and over	
	1967	1968	1967	1968	1967	1968	1967	1968	1967	1968
	head	head	head	head	head	head	head	head	head	head
Ohio	973	970	577	544	541	532	276	284	36	35
Indiana ...	1,706	1,706	916	873	875	833	507	476	86	79
Illinois ..	2,202	2,341	1,707	1,653	1,533	1,574	863	780	135	156
Wisconsin ..	672	730	377	357	288	293	164	174	30	32
Minnesota ..	1,133	1,227	720	812	668	655	405	448	72	54
Iowa	4,272	4,724	3,614	3,751	3,413	3,335	1,774	1,737	363	347
Missouri ..	1,359	1,504	948	1,055	751	805	429	449	89	94
S. Dakota ..	474	505	538	533	562	571	210	257	40	38
Nebraska ..	758	860	771	800	777	800	384	430	55	74
Kansas	487	499	324	352	298	338	196	235	47	44
Total 10 States	14,036	15,066	10,492	10,730	9,706	9,736	5,208	5,270	953	953
					1,000 head					
Hawaii	26	27	20	19	11	9	1	1		

Hogs and Pigs: Number on farms, breeding, market and total,
December 1, 1967 and 1968, selected States

State	Breeding			Market			Total		
	1968			1968			1968		
	1967	Number	As % of	1967	Number	As % of	1967	Number	As % of
	1,000	1,000	Percent	1,000	1,000	Percent	1,000	1,000	Percent
	head	head	Percent	head	head	Percent	head	head	Percent
Ohio	345	362	105	2,212	2,221	100	2,557	2,583	101
Indiana . .	638	621	97	3,730	3,878	104	4,368	4,499	103
Illinois . .	1,117	1,188	106	6,090	6,235	102	7,207	7,423	103
Wisconsin .	336	318	95	1,432	1,450	101	1,768	1,768	100
Minnesota .	522	564	108	2,622	2,894	110	3,144	3,458	110
Iowa	2,340	2,536	108	12,757	13,316	104	15,097	15,852	105
Missouri . .	686	707	103	3,743	3,855	103	4,429	4,562	103
S. Dakota .	334	335	100	1,472	1,525	104	1,806	1,860	103
Nebraska . .	487	507	104	2,556	2,871	112	3,043	3,378	111
Kansas . . .	252	265	105	1,326	1,502	113	1,578	1,767	112
Total 10 States . .	7,057	7,403	105	37,940	39,747	105	44,997	47,150	105
Hawaii . . .	10	10	100	58	56	97	68	66	97

Market Hogs and Pigs: Number on farms by weight groups,
December 1, 1967 and 1968, selected States

State	Under 60 lbs.		60-119 lbs.		120-179 lbs.		180-219 lbs.		220 lbs. and over	
	1968		1968		1968		1968		1968	
	1967	1968	1967	1968	1967	1968	1967	1968	1967	1968
	1,000 head									
Ohio	867	866	664	666	409	422	232	222	40	45
Indiana . .	1,194	1,210	1,100	1,140	858	1,008	477	434	101	86
Illinois . .	2,058	2,151	1,772	1,808	1,267	1,278	810	811	183	187
Wisconsin .	587	551	301	377	308	305	193	181	43	36
Minnesota .	933	984	787	894	498	564	325	356	79	96
Iowa	4,210	4,461	3,342	3,462	2,615	2,863	1,952	1,931	638	599
Missouri . .	1,497	1,465	898	1,041	749	752	412	424	187	173
S. Dakota .	530	549	353	374	280	290	221	221	88	91
Nebraska . .	982	1,120	700	735	468	519	299	356	107	141
Kansas . . .	530	616	345	368	252	293	146	165	53	60
Total 10 States . .	13,388	13,973	10,262	10,865	7,704	8,294	5,067	5,101	1,519	1,514
	1,000 head									
Hawaii . . .	28	25	18	18	11	10	1	2		1

Farrowings: Number of sows, pigs per litter and pig crop,
December 1/ through Feb., 1967-69, selected States

State	Sows farrowing					Pigs per litter		Pig Crop 3/		
	Average	1967	1968	1969	2/	litter		1968		
	1962-66	1967	1968	Number	As %	1967	1968	1967	Number	As %
	1,000	1,000	1,000	1,000	Percent	Number	Number	1,000	1,000	Percent
	head	head	head	head	Percent	Number	Number	head	head	Percent
Ohio	114	116	115	113	98	7.22	7.10	838	816	97
Ind.	252	219	219	210	96	7.21	7.26	1,579	1,590	101
Ill.	311	307	307	319	104	7.27	7.05	2,232	2,164	97
Wis.	86	83	80	82	102	7.25	7.79	602	623	103
Minn.	141	136	141	147	104	7.59	7.78	1,032	1,097	106
Iowa	443	462	480	518	108	7.37	7.25	3,405	3,480	102
Mo.	172	186	190	196	103	7.14	7.08	1,328	1,345	101
S. Dak. ..	44	50	58	63	108	7.43	7.60	372	441	119
Nebr.	96	116	125	130	104	7.45	7.45	864	931	108
Kans.	63	70	74	84	114	7.40	7.26	518	537	104
Total 10 States	1,722	1,745	1,789	1,862	104	7.32	7.28	12,770	13,024	102
Hawaii ..	2.7	2.9	3.0	3.0	100	6.91	6.65	20	20	100

1/ December preceding year.

2/ Number indicated by breeding intention reports.

3/ Number of pigs farrowed December through February which were still on hand March 1 or had been sold.

Farrowings: Number of sows, pigs per litter and pig crop,
March-May, 1967-69, selected States

State	Sows farrowing					Pigs per litter		Pig crop 2/		
	Average	1967	1968	1969	1/	litter		1968		
	1962-66	1967	1968	Number	As %	1967	1968	1967	Number	As %
	1,000	1,000	1,000	1,000	Percent	Number	Number	1,000	1,000	Percent
	head	head	head	head	Percent	Number	Number	head	head	Percent
Ohio	169	155	146	150	103	7.30	7.59	1,132	1,108	98
Ind.	251	235	235	249	106	7.69	7.53	1,807	1,770	98
Ill.	570	508	508	544	107	7.39	7.19	3,754	3,653	97
Wis.	163	149	149	149	100	7.38	7.74	1,100	1,153	105
Minn.	304	268	279	307	110	7.60	7.58	2,037	2,115	104
Iowa	1,125	1,179	1,155	1,247	108	7.17	7.52	8,453	8,686	103
Mo.	283	293	299	311	104	7.63	7.54	2,236	2,254	101
S. Dak. ..	214	200	206	206	100	7.29	7.50	1,458	1,545	106
Nebr.	266	245	277	291	105	7.43	7.39	1,820	2,047	112
Kans.	96	98	104	114	110	7.62	7.76	747	807	108
Total 10 States	3,440	3,330	3,358	3,568	106	7.37	7.49	24,544	25,138	102
Hawaii ..	2.8	2.8	3.0	3.0	100	7.11	6.66	20	20	100

1/ Number indicated by breeding intention reports.

2/ Number of pigs farrowed March through May which were still on hand June 1 or had been sold.

Farrowings: Number of sows, pigs per litter and pig crop,
June-August 1967 and 1968, selected States

State	Sows farrowing				Pigs per litter		Pig crop 1/		
	Average	1968			litter		1968		
	1962-66	1967	Number	As % of	1967	1968	1967	Number	As % of
	1,000	1,000	1,000	Percent	Number	Number	1,000	1,000	Percent
	head	head	head				head	head	
Ohio	144	142	142	100	7.54	7.53	1,071	1,069	100
Indiana	293	254	262	103	7.54	7.21	1,915	1,889	99
Illinois	407	417	434	104	7.27	7.16	3,032	3,107	102
Wisconsin	116	108	108	100	7.55	7.86	815	849	104
Minnesota	189	178	190	107	7.50	7.56	1,335	1,436	108
Iowa	644	665	718	108	7.36	7.46	4,894	5,356	109
Missouri	225	235	249	106	7.20	7.27	1,692	1,810	107
South Dakota	60	64	68	106	7.20	7.23	461	492	107
Nebraska	120	122	139	114	7.40	7.54	903	1,048	116
Kansas	66	73	77	105	7.51	7.69	548	592	108
Total 10 States	2,264	2,258	2,387	106	7.38	7.39	16,666	17,648	106
Hawaii	2.8	2.9	3.0	103	7.24	7.40	21	22	105

1/ Number of pigs farrowed June through August which were still on hand September 1 or had been sold.

Farrowings: Number of sows, pigs per litter and pig crop,
September-November, 1967 and 1968, selected States

State	Sows farrowing				Pigs per litter		Pig crop 1/		
	Average	1968			litter		1968		
	1962-66	1967	Number	As % of	1967	1968	1967	Number	As % of
	1,000	1,000	1,000	Percent	Number	Number	1,000	1,000	Percent
	head	head	head				head	head	
Ohio	140	121	125	103	7.50	7.40	908	925	102
Indiana	199	184	188	102	7.58	7.58	1,395	1,425	102
Illinois	393	382	393	103	7.35	7.13	2,808	2,802	100
Wisconsin	109	108	111	103	7.64	7.66	825	850	103
Minnesota	160	147	159	108	7.58	7.30	1,105	1,161	105
Iowa	601	680	707	104	7.30	7.35	4,964	5,196	105
Missouri	231	268	276	103	7.41	7.23	1,986	1,995	100
South Dakota	71	88	91	103	7.23	7.62	636	693	109
Nebraska	154	170	192	113	7.44	7.51	1,265	1,442	114
Kansas	70	86	95	110	7.56	7.63	650	725	112
Total 10 States	2,128	2,234	2,337	105	7.40	7.37	16,542	17,214	104
Hawaii	2.7	2.8	3.0	107	6.79	6.67	19	20	105

1/ Number of pigs farrowed September through November which are still on hand December 1, or have been sold.

OFFICIAL BUSINESS

(Continued from page 2)

Sows farrowing during June-November 1968 totaled 6,156,000 head, up 4 percent from a year earlier. Farrowings were up 8 percent in the North Atlantic States, 7 percent in the Western Corn Belt, 2 percent in the Eastern Corn Belt, 5 percent in the South Atlantic, 3 percent in the West, and unchanged in the South Central States.

Average litter size during June-November 1968 was 7.35 pigs compared with the record high for this period 1 year ago of 7.38.

The June-August 1968 pig crop in the 10 Corn Belt States totaled 17,648,000 head, an increase of 6 percent from a year earlier. Sows farrowing during the quarter totaled 2,387,000 head.

The September-November 1968 pig crop in the 10 Corn Belt States totaled 17,214,000 head, up 4 percent from the same period of 1967. Sows farrowing totaled 2,337,000 head.

DECEMBER-MAY INTENTIONS UP 5 PERCENT

U. S. hog producers reported intentions to farrow 6,981,000 sows during the December 1968-May 1969 period, 5 percent above a year earlier. All regions, except the South Central which is unchanged, expect to farrow more sows than last year. Increases range from 1 percent in the North Atlantic to 6 percent in the Western Corn Belt and West.

If the December-May sow farrowing intentions are realized and pigs per litter equal the average plus an allowance for trend, the pig crop for the period will total 51,700,000 head, 5 percent more than a year earlier.

Sows bred and intended to farrow in 10 Corn Belt States during December 1968-February 1969 total 1,862,000 head, 4 percent more than a year earlier. Intentions decreased in Ohio and Indiana, while all other States indicate increases ranging from 2 percent in Wisconsin to 14 percent in Kansas.

Reported intentions are for 3,568,000 sows to farrow during the March-May 1969 quarter in the 10 States, 6 percent more than last year. Wisconsin and South Dakota expect no change from a year earlier, while other States indicate increases of 3 to 10 percent.

CROP REPORTING BOARD